

AD-A162 121

THE RELIABILITY OF LOAD SHARING SYSTEMS(U) CORNELL UNIV 1/1  
ITHACA NY H M TAYLOR NOV 85 AFOSR-TR-85-1096

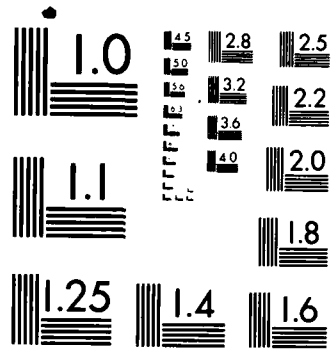
AFOSR-84-0165

UNCLASSIFIED

F/G 12/1

NL






MICROCOPY RESOLUTION TEST CHART  
NATIONAL BUREAU OF STANDARDS 1963-A

# AD-A162 121

2

## REPORT DOCUMENTATION PAGE

1a. REPORT SECURITY CLASSIFICATION Unclassified			1b. RESTRICTIVE MARKINGS			
2a. SECURITY CLASSIFICATION AUTHORITY			3. DISTRIBUTION/AVAILABILITY OF REPORT Approved for public release; distribution unlimited			
2b. DECLASSIFICATION/DOWNGRADING SCHEDULE N/A			4. PERFORMING ORGANIZATION REPORT NUMBER(S)			
5a. NAME OF PERFORMING ORGANIZATION Cornell University			5b. OFFICE SYMBOL (If applicable)		5. MONITORING ORGANIZATION REPORT NUMBER(S) <b>AFOSR-TR-85-1096</b>	
6c. ADDRESS (City, State and ZIP Code) Ithaca, NY 14853-5014			7b. NAME OF MONITORING ORGANIZATION AFOSR/NM			
7a. ADDRESS (City, State and ZIP Code) Bolling AFB, D.C. 20332-6448			8a. NAME OF FUNDING/SPONSORING ORGANIZATION AFOSR			
8b. OFFICE SYMBOL (If applicable) NM			9. PROCUREMENT INSTRUMENT IDENTIFICATION NUMBER AFOSR-84-0165			
9c. ADDRESS (City, State and ZIP Code) Bolling AFB, D.C. 20332-6448			10. SOURCE OF FUNDING NOS.			
			PROGRAM ELEMENT NO. 61102F	PROJECT NO. 2304	TASK NO. A5	WORK UNIT NO.
11. TITLE (Include Security Classification) The reliability of Load Sharing Systems						
12. PERSONAL AUTHOR(S) H/M. Taylor						
13a. TYPE OF REPORT Annual		13b. TIME COVERED FROM Jun 84 to May 85		14. DATE OF REPORT (Yr., Mo., Day) November 1985		15. PAGE COUNT 5
16. SUPPLEMENTARY NOTATION						
17. COSATI CODES			18. SUBJECT TERMS (Continue on reverse if necessary and identify by block number)			
FIELD	GROUP	SUB. GR.	fault tolerant systems, load sharing systems, optimal replacement models			
19. ABSTRACT (Continue on reverse if necessary and identify by block number) Research was conducted on load sharing systems, where the failure of one component increases the load on other nonfailed components. The optimal replacement theory for fault tolerant load sharing systems was developed. Where failed components cannot be replaced individually, an algorithm was found that determines the optimal policy for replacing the entire system. Two papers have been prepared in the first year of this grant.						
<div style="text-align: right;">  </div>						
20. DISTRIBUTION/AVAILABILITY OF ABSTRACT UNCLASSIFIED/UNLIMITED <input checked="" type="checkbox"/> SAME AS RPT. <input type="checkbox"/> DTIC USERS <input type="checkbox"/>						
21. ABSTRACT SECURITY CLASSIFICATION Unclassified			22a. NAME OF RESPONSIBLE INDIVIDUAL Brian W. Woodruff, Maj, USAF			
22b. TELEPHONE NUMBER (Include Area Code) (202) 767-5027			22c. OFFICE SYMBOL NM			

NTIS GRA&I	<input checked="" type="checkbox"/>
DTIC TAB	<input type="checkbox"/>
Unannounced	<input type="checkbox"/>
Justification	<input type="checkbox"/>

## FINAL TECHNICAL REPORT

AFOSR-84-0165

The Reliability of Load Sharing Systems

Howard M. Taylor, Cornell University

Principal Investigator

By _____	
Distribution/	
Availability Codes	

Dist	Avail and/or Special
------	-------------------------

A-1

1. Summary. In a load sharing system, the failure of one or more components increases the load on other nonfailed components, thereby increasing their chances of failure, and the failure of the system. Examples of load sharing systems include many mechanical, thermal and electrical structures. System reliability is measured by the probability that the system is capable of performing its prescribed task or surviving for a prescribed duration. Traditional reliability models often postulate that component failures are statistically independent and, thus, do not describe load sharing systems.

QUALITY INSPECTED 3
---------------------------

The optimal replacement theory for fault tolerant load sharing systems was developed under the support of the grant. As components fail, the system deteriorates. Where failed components cannot be replaced individually, an algorithm was found that determines the optimal policy for replacing the entire system. ←

Load sharing systems arise as models for the failure process of certain composite materials such as Kevlar fibers embedded in an epoxy matrix, or for certain semi-crystalline polymer fibers themselves. Because of the astronomical numbers of components in these models, their analysis is quite difficult. Progress was made in developing a simple model that accurately describes the failure process, but is far more easily understood and manipulated.

2. Research Objectives. In a load sharing system, the failure of one or more components increases the load on other nonfailed components, thereby increasing their chances of failure, and the failure of the whole system. Examples of load sharing systems include:

Approved for Release  
Distribution

2  
Chief, T

(a) Heat shields on a space re-entry vehicle. The failure of loss of some shields increases the burden on others;

(b) Fibrous composite materials. Many mechanical structures share loads among components. As one such example, consider a fibrous composite material consisting of parallel stiff fibers embedded in a plastic matrix. Failure of some fibers under an initial tensile load increases the stress on adjacent or nearby fibers.

(c) Networks of electric power generators, where the failure of one source causes the load on other sources to increase in order to meet total system demand.

Appropriate measures of system reliability in these examples are: (a) The probability that the system is capable of performing its prescribed task, such as supporting a specified mechanical load, or (b) The probability distribution of time to system failure. Traditional reliability analysis has concentrated on systems in which component failures are statistically independent. This assumption is not valid where load sharing among components appears, and thus traditional reliability techniques cannot be used to determine system performance.

Our research is directed towards developing and analyzing models and algorithms that predict system reliability from knowledge of component reliabilities and the load sharing and other features of the system. Such models are needed to guide experimentation and the interpretation of statistical data, to evaluate alternative system designs, and as a basis for the development of optimum policies for maintenance and repair of systems and components.

3. Status of Research. We have made substantial progress on two of our specific objectives:

(a) In an optimal replacement model, a system deteriorates over time, and based on its current state, one wishes to decide in an optimal manner whether or not to replace the system with a statistically identical new one. Optimal replacement problems

are the special class of sequential decision models that are distinguished by having only two actions available at any state: (i) To replace the system with a new and statistically identical one, or (ii) To continue operation with the current system. Often there is a notion of total failure, at which point replacement is mandated.

Replacement models for systems having indistinguishable components that fail over time, while allowing the system to continue to perform at a reduced level, have been studied. Our contribution was to develop the model in which the individual system components are distinguishable so that it is important to know exactly which components are operating at any given time, and not merely their total number. Moreover, we allowed the individual component failure rates to depend on the state of the entire system. Such a feature is important in studying load sharing systems in which the load that a component had been carrying prior to its failure is, upon that component's failure, shifted to other components, thereby possibly increasing their failure rates. We were motivated to study this problem in part by the importance in modern practice of so-called fault tolerant systems, systems that can continue to operate even though some of their components have failed. In addition to simple redundancy, many such systems feature function migration in which the function served by a component is shifted to another component upon the first component's failure.

Our main contribution has been to develop an algorithm that determines an optimal replacement policy for a fault tolerant system having distinguishable components whose failure rates are system dependent. The rate at which the system produces income is assumed to decrease as the system deteriorates, and the system replacement cost is assumed to rise. Our algorithm is of the so-called greedy type. It begins with the policy that continues to operate the system, (that is, does not replace it), only if all components are operational. The algorithm then enlarges this continuation set in a monotonic manner, state by state, to arrive

at the optimal such continuation set. If there are  $N$  system components, then there are  $2^N$  system states. The optimal policy will be specified by a class of these system states, the class of states in which the system is allowed to continue to operate. There are, then,  $2^2$  such possible continuation sets of states.

(b) If a modern high strength-low weight polymer material, such as a Kevlar fiber or Kevlar-epoxy composite, is suspended under a constant weight, it will eventually fail, an example of what is called stress rupture or static fatigue. The failure process begins at the atomic level where random fluctuations cause sufficient thermal energy to exist in a molecule to overcome certain local energy barriers, and a molecule may slip relative to other molecules or rupture at one of its atomic bonds. As molecules slip or rupture, neighboring molecules become overloaded, thus increasing their failure rates. Such molecule failures accumulate locally, forming minute cracks that are the irreversible changes in the microstructure that ultimately lead to macroscopic failure of the material. Because a Kevlar-epoxy strand can have a strength to weight ratio that is 50 times that of steel, these materials are of growing importance in aircraft and elsewhere. Nationwide, much research effort is being devoted to their study, but virtually all of this research is experimental or, more recently, simulation. In contrast, we are developing purely mathematical models that characterize the failure process. The key notion is the load sharing and local stress concentrations in the near vicinity of failed elements. We have made great progress over the past decade, and our models are now providing results and insights that cannot be achieved by experimentation or simulation. Our long term goal is to work more closely with material scientists, both to communicate our results to them, and to improve our models. Unfortunately, the mathematical analysis of these models is extremely difficult, requiring a high level of proficiency in probability theory. During this past year, we have

developed a simpler model that captures the essence of the failure process, but is far easier to understand. We hope that these mathematical models will become the accepted framework for describing the failure process in certain composite materials, both for design and experimentation.

#### 4. Publications.

"Optimal replacement for fault tolerant systems", by H. M. Taylor and B. Rodriguez. To appear: Naval Research Logistic Quarterly.

"A model for the failure process of semi-crystalline polymer materials under static fatigue", by H. M. Taylor. (In final preparation.)



**END**

**FILMED**

---

**1-86**

**DTIC**