

AD-A160 720

CHARACTERISTICS OF THE CLASS OF 1989 DUTY-HONOR-COUNTRY 1/1
(U) MILITARY ACADEMY WEST POINT NY OFFICE OF
INSTITUTIONAL RESEARCH J B WRIGHT SEP 85

UNCLASSIFIED

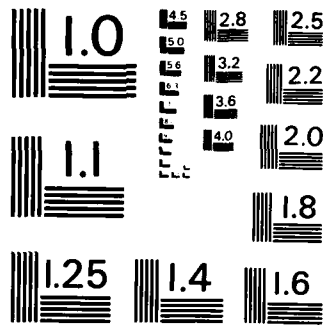
USMA-DIR-85-008

F/G 5/9

NL



			END
			FILED
			DTIC



MICROCOPY RESOLUTION TEST CHART
NATIONAL BUREAU OF STANDARDS - 1963 - A

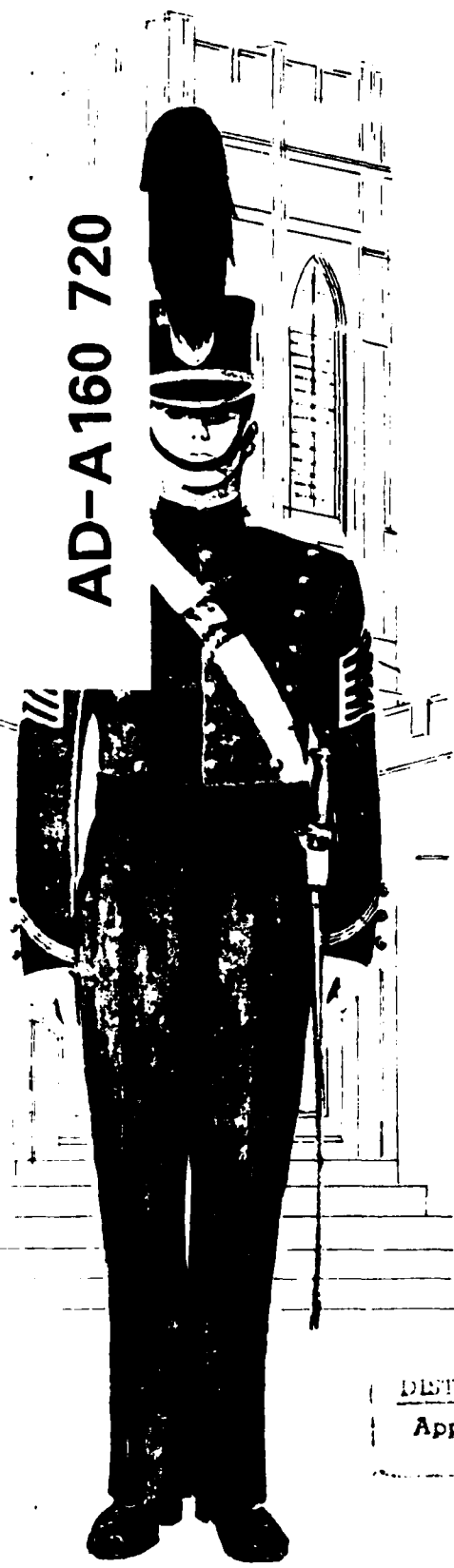
2

85-008

UNITED STATES MILITARY ACADEMY

WEST POINT, NEW YORK

CHARACTERISTICS OF THE CLASS OF 1989



AD-A160 720

DTIC FILE COPY

DUTY-HONOR-COUNTRY

DTIC
GCT 3-2 1985

DISTRIBUTION STATEMENT A
Approved for public release
Distribution Unlimited

OFFICE OF INSTITUTIONAL RESEARCH
SEPTEMBER 1985

85 10 34

Characteristics of the Class of 1989

Report No. :USMA-OIR-85-008
Project No. :569
Prepared by :Mr. Jack B. Wright
Programmers :Data Support Branch
Typist :Mrs. Carol A. Durham
September 1985

Abstract

This report presents the biographical characteristics and achievements of the 1,428 new cadets who entered the United States Military Academy in the Class of 1989.

NOTE: Any conclusions in this report are not to be construed as official U. S. Military Academy or Department of the Army positions unless so designated by other authorized documents.

OFFICE OF INSTITUTIONAL RESEARCH
UNITED STATES MILITARY ACADEMY
WEST POINT, NEW YORK 10996-1585

TABLE OF CONTENTS

	Page
Preface.	1
TABLE	
1 Distribution of Scores on Academic Qualification Measures (Admitted by CEER)	2
2 Distribution of Scores on Academic Qualification Measures (Admitted by ACEER).	2
3 Distribution of ACEER Scores (Admitted by ACT Scores).	3
4 Distribution of Scores on PAE, LPS and HSR (All Admitted Cadets) .	3
5 Distribution of Whole Candidate Scores (All Admitted Cadets) . . .	4
6 Means and Standard Deviations of Scores of Male and Female Cadets	4
7 Distribution of Height and Weight.	5
8 High School Characteristics.	6
9 Awards and Scholarships.	6
10 Scholarships	7
11 Clubs and Positions Held or Awards Obtained.	8
12 Nominations and Appointments	9
13 Father's Military Status and Rank.	9
14 Class Year of Fathers Who Are USMA Graduates	10
15 Sport Participation.	10
16 Miscellaneous.	11
Report Documentation Page (DD Form 1473)	12

Preface

This report presents the biographical characteristics and achievements of the 1,428 new cadets who entered the Class of 1989. The admission scores listed in Table 1 are for the 987 cadets whose admission was based on the CEER, while Tables 2 and 3 are for the 441 cadets whose admission was based on American College Test scores. The following abbreviations, explanations and definitions of terms apply in this report.

CEER	A statistically derived weighted composite score of two College Entrance Examination Board Tests (Scholastic Aptitude Test-Verbal, Scholastic Aptitude Test-Mathematics, and a standardized high school rank score.
High School Rank	This is a score derived by converting the actual high school rank to a standard score, using a formula developed by the Educational Testing Service.
Whole Candidate Score	This is a weighted composite score of the CEER or ACEER, the Physical Aptitude Examination score and the Leadership Potential Score.
Physical Aptitude Examination Score	This is a standardized score developed to measure physical capabilities.
Leadership Potential Score	This is a score derived from the ratings of the candidate by his/her secondary school teachers and evaluations by admissions officials of his/her type of participation in athletic and other school and community activities.
ACT	American College Testing Program.
ACEER	A statistically derived weighted composite score of ACT tests and high school rank converted to the 200-800 range of the CEER.

✓



A-1

TABLE 1

Distribution of Scores on Academic Qualification Measures
(For those admitted by use of CEER)

Score Ranges	Scholastic Aptitude Verbal		Scholastic Aptitude Mathematics		CEER	
	N	Cum %	N	Cum %	N	Cum %
750-800	8	100%	46	100%	7	100%
700-749	52	99	150	95	47	99
650-699	102	94	237	80	173	94
600-649	187	84	277	56	314	77
550-599	240	65	194	28	267	45
500-549	225	40	79	8	145	18
450-499	137	18	3	0	29	3
400-449	32	4	1	0	4	0
350-399	4	0	0	0	0	0
Total	987		987		987	
Mean	569		636		606	
S.D.	75		64		59	

TABLE 2

Distribution of Scores on Academic Qualification Measures
(For those admitted by use of ACEER)

Score Ranges	ACT-ENG		ACT-MATH		ACT-N.S.		ACT-S.S.	
	N	Cum %	N	Cum %	N	Cum %	N	Cum %
34-36	0	100%	53	100%	22	100%	2	100%
31-33	9	100	106	88	180	95	68	96
28-30	36	98	121	64	129	54	123	86
25-27	93	90	133	37	63	25	117	58
22-24	218	69	24	6	38	11	84	30
19-21	72	19	4	1	4	3	33	11
16-18	11	3	0	0	3	1	5	3
13-15	0	0	0	0	2	0	6	2
10-12	2	0	0	0	0	0	3	1
Total	441		441		441		431	
Mean	24.0		29.1		29.3		26.2	
S.D.	3.0		3.6		3.5		4.3	

TABLE 3
 Distribution of ACEER Scores
 (For those admitted by use of ACT scores)

Score Ranges	ACEER	
	N	Cum %
750-800	2	100%
700-749	18	100
650-699	77	96
600-649	128	78
550-599	123	49
500-549	81	21
450-499	11	3
400-449	1	0
Total	441	
Mean	601	
S.D.	58	

TABLE 4
 Distribution of Scores on PAE, LPS and HSR
 (For all admitted cadets)

Score Ranges	Physical Aptitude* (PAE)				Leadership Potential (LPS)		High School Rank (HSR)	
	Male		Female		N	Cum %	N	Cum %
	N	%	N	%				
750-800	14	100%	2	100%	4	100%	93	100%
700-749	27	99	3	99	54	100	85	94
650-699	155	97	12	97	273	96	244	88
600-649	240	85	22	89	387	77	248	70
550-599	300	66	28	76	419	50	241	53
500-549	291	42	28	58	195	20	256	36
450-499	173	19	40	41	78	7	137	18
400-449	61	5	21	16	14	1	72	9
350-399	1	0	5	3	4	0	40	4
300-349	0	0	0	0	0	0	9	1
250-299	0	0	0	0	0	0	2	0
200-249	0	0	0	0	0	0	1	0
Total	1262		161		1428		1428	
Mean	570		533		598		580	
S.D.	74		87		63		102	

*Distribution of PAE scores are shown separately for male and female cadets as they are scored on different events. Five male cadets did not have PAE scores at entrance on 2 July.

TABLE 5
Distribution of Whole Candidate Scores
(For all admitted cadets)

<u>Score Ranges</u>	<u>N</u>	<u>Cum %</u>
7000-7249	7	100
6750-6999	19	100
6500-6749	105	98
6250-6499	227	91
6000-6249	425	75
5750-5999	297	45
5500-5749	208	24
5250-5499	102	10
5000-5249	30	3
4750-4999	5	1
4500-4749	3	0
Total	1428	
Mean	6004	
S.D.	377	

TABLE 6
Means and Standard Deviations of Scores of Male and Female Cadets

	<u>WCS</u>		<u>HSR</u>		<u>LPS</u>		<u>PAE*</u>	
	<u>Male</u>	<u>Female</u>	<u>Male</u>	<u>Female</u>	<u>Male</u>	<u>Female</u>	<u>Male</u>	<u>Female</u>
N	1266	161	1266	161	1266	161	1263	161
Mean	6004	6012	576	615	597	603	570	533
S.D.	380	353	102	93	63	58	74	87

	<u>ACEER</u>		<u>CEER</u>		<u>SAT-V</u>		<u>SAT-M</u>	
	<u>Male</u>	<u>Female</u>	<u>Male</u>	<u>Female</u>	<u>Male</u>	<u>Female</u>	<u>Male</u>	<u>Female</u>
N	387	54	879	107	879	107	879	107
Mean	601	611	606	610	568	574	638	619
S.D.	57	63	59	59	76	73	64	63

	<u>ACT-EN</u>		<u>ACT-MA</u>		<u>ACT-NS</u>		<u>ACT-SS</u>	
	<u>Male</u>	<u>Female</u>	<u>Male</u>	<u>Female</u>	<u>Male</u>	<u>Female</u>	<u>Male</u>	<u>Female</u>
N	387	54	387	54	387	54	379	57
Mean	23.3	24.9	29.2	28.8	29.4	28.0	26.4	24.6
S.D.	2.8	3.2	3.6	3.7	3.3	4.3	4.1	4.9

*PAE scale for females is not the same as the scale for males.

TABLE 7-1
Distribution of Height and Weight
(Female Cadets)

<u>Inches</u>	<u>Height</u>		<u>Pounds</u>	<u>Weight</u>	
	<u>No.</u>	<u>%</u>		<u>No.</u>	<u>%</u>
72-73	4	2.5%	170-179	2	1.2%
70-71	7	4.3	160-169	6	3.7
68-69	22	13.7	150-159	12	7.5
66-67	49	30.4	140-149	22	13.7
64-65	42	26.1	130-139	38	23.6
62-63	25	15.5	120-129	42	26.1
60-61	9	5.6	110-119	21	13.0
58-59	3	1.9	100-109	15	9.3
			90-99	3	1.9
Total	161	100	Total	161	100
Mean		65.4	Mean		129.8
S.D.		2.7	S.D.		15.8

TABLE 7-2
Distribution of Height and Weight
(Male Cadets)

<u>Inches</u>	<u>Height</u>		<u>Pounds</u>	<u>Weight</u>	
	<u>No.</u>	<u>%</u>		<u>No.</u>	<u>%</u>
78-79	3	0.2	290-299	1	0.1
76-77	29	2.3	240-249	7	0.6
74-75	112	8.8	230-239	4	0.3
72-73	259	20.4	220-229	8	0.6
70-71	331	26.1	210-219	18	1.4
68-69	314	24.8	200-209	40	3.2
66-67	169	13.3	190-199	70	5.5
64-65	45	3.6	180-189	92	7.3
62-63	4	0.3	170-179	162	12.8
			160-169	213	16.8
			150-159	257	20.3
			140-149	213	16.8
			130-139	113	8.9
			120-129	55	4.3
			110-119	11	0.9
			100-109	2	0.2
Total	1266	100	Total	1266	100
Mean		69.6	Mean		157.7
S.D.		3.1	S.D.		24.0

TABLE 8
High School Characteristics

	Number	Percent
Type of High School attended in Senior Year		
Public (Include HS in Foreign Country).....	1173	83%
Private (Non-Military).....	49	3
Private (Military).....	24	2
Rank in Graduating Class		
Top 10%.....	897	63%
Second 10%.....	308	21
Second 20%.....	144	10
Middle 20%.....	46	3
Fourth 20%.....	8	1
Lowest 20%.....	4	2
Selected as Valedictorian (First in the Class).....	109	7
Selected as Salutatorian (Second in the Class).....	100	7
Number of High Schools Attended		
One.....	1186	83%
Two.....	182	13
Three.....	32	2
Four.....	10	1
Five or more.....	1	1

TABLE 9
Awards and Scholarships

	Number	Percent
Received Following Awards		
National Honor Society.....	914	64%
Bausch and Lomb Science Award.....	51	4
American Legion Award.....	119	8
Boy's State or Girl's State Delegate.....	331	23
Took the National Merit/Achievement Scholarship Examination		
Yes, and Received Commendation.....	267	18%
Yes, was Semi-Finalist.....	43	3
Yes, was Finalist.....	45	3
Yes, was Merit Scholar.....	34	2

TABLE 10
Scholarships

	Number	Percent
Number of Academic Scholarships		
None.....	1062	75%
One.....	195	14
Two or Three.....	131	9
Four or Five.....	16	1
Six or More.....	8	1
Number of Athletic Scholarships		
None.....	1274	90%
One.....	71	5
Two or Three.....	43	3
Four or Five.....	13	1
Six or More.....	13	1
Received the Following Military Scholarships*		
Army ROTC Scholarship.....	273	19%
Navy ROTC Scholarship.....	223	16
Air Force ROTC Scholarship.....	147	10
Other ROTC Scholarship.....	5	1

*May be more than one.

TABLE 11

Clubs and Positions Held or Awards Obtained

	Number	Percent
Elected or Appointed to Following High School Positions*		
President of High School Senior Class.....	90	6%
Senior Class Officer (Other Than President).....	230	16
President, Student Body.....	93	7
President, High School Class (Other than Senior Class)....	160	11
President, Student Council.....	96	7
Participated in or Held Following High School Positions*		
Debating or Forensic Society.....	180	13%
Thespian or Dramatic Club.....	212	15
Glee Club.....	116	8
High School Band.....	310	22
Staff, School Paper.....	257	18
Editor or Co-Editor, School Paper.....	100	7
Staff, Yearbook or Annual.....	251	18
Editor or Co-Editor, Yearbook or Annual.....	93	7
Presently is or has Been One of the Following*		
Boy Scout/Girl Scout.....	601	42%
Explorer Scout.....	125	9
Sea Scout.....	10	1
Air Scout.....	9	1
Campfire Girl.....	18	1
Camp Counselor.....	206	15
Order of the Arrow.....	151	11
Eagle Scout (Boys).....	133	11
First Class Scout (Girls).....	5	3

*May be more than one.

TABLE 12
Nominations and Appointments

	Number	Percent
Federal Academies Where Nomination was Attempted*		
Naval Academy.....	267	19%
Air Force Academy.....	297	21
Coast Guard Academy.....	101	7
Merchant Marine Academy.....	51	4
Federal Academies Where Appointment was Received*		
Naval Academy.....	102	7
Air Force Academy.....	60	4
Coast Guard Academy.....	55	4
Merchant Marine Academy.....	24	2
First Choice of Schools was		
US Military Academy.....	1041	73
US Air Force Academy.....	134	9
US Naval Academy.....	67	5
US Coast Guard Academy.....	8	1
US Merchant Marine Academy.....	1	0
A Civilian Liberal Arts College.....	79	6
A Civilian Engineering College.....	59	4
Another Type of College.....	19	1

*May be more than one.

TABLE 13
Father's Military Status and Rank

	Number	Percent
Father's (or stepfather's) active or nonactive service status.		
No military service or don't know.....	563	40%
Career in military service terminated for physical disability.....	23	2
Served less than twenty years, no longer in service.....	557	39
Served twenty years or more and retired.....	136	10
Now on fulltime active duty.....	70	5
Serving with Reserves/National Guard now.....	31	2
Died while on active duty.....	4	0
Father's Highest Grade**		
E1 - E3 (Private or PFC).....	110	8
E4 - E6 (Corporal Through Staff Sergeant).....	230	16
E7 - E9 (Platoon Sergeant Through Sergeant Major).....	86	6
Warrant Officer.....	15	1
Lieutenant or Captain.....	108	8
Major.....	38	3
Lieutenant Colonel.....	75	5
Colonel.....	35	2
General Officer.....	5	0

**Army grade or AF, Navy and Marine Corps equivalent.

TABLE 14
Class Year of Fathers Who Are USMA Graduates

<u>Year</u>	<u>No.</u>
1966	3
1965	6
1964	3
1963	3
1962	3
1961	2
1960	2
1959	1
1958	1
1957	1
1955	1
1954	2
1953	2
1952	1
1951	2
1950	2
1949	1
1948	1
1942	1
Total	37

TABLE 15
Sport Participation

	<u>Number</u>	<u>Percent</u>
Participated in Varsity Athletics.....	1311	92%
Earned Varsity Letter.....	1248	88
Varsity Team Captain.....	810	57

TABLE 16
Miscellaneous

	<u>Number</u>	<u>Percent</u>
What type of college did you attend?		
Not applicable -- I did not attend.....	1214	86%
A junior, communi., extension or branch college with a one or two-year program only.....	53	4
Some other institution with less than a four-year program.....	10	1
A four-year college, not part of a university.....	28	2
A university, including its separate colleges.....	103	7

REPORT DOCUMENTATION PAGE		READ INSTRUCTIONS BEFORE COMPLETING FORM
1. REPORT NUMBER USMA-OIR-85-008	2. GOVT ACCESSION NO. D 1/60	3. RECIPIENT'S CATALOG NUMBER 22
4. TITLE (and Subtitle) Characteristics of the Class of 1989	5. TYPE OF REPORT & PERIOD COVERED	
	6. PERFORMING ORG. REPORT NUMBER	
7. AUTHOR(s) Mr. Jack B. Wright	8. CONTRACT OR GRANT NUMBER(s)	
9. PERFORMING ORGANIZATION NAME AND ADDRESS Office of Institutional Research United States Military Academy West Point, New York 10996-1585	10. PROGRAM ELEMENT, PROJECT, TASK AREA & WORK UNIT NUMBERS Project No. 569	
11. CONTROLLING OFFICE NAME AND ADDRESS Same as #9 above.	12. REPORT DATE September 1985	
	13. NUMBER OF PAGES	
14. MONITORING AGENCY NAME & ADDRESS (if different from Controlling Office) United States Military Academy West Point, New York, 10996-1585	15. SECURITY CLASS. (of this report) Unclassified	
	15a. DECLASSIFICATION/DOWNGRADING SCHEDULE	
16. DISTRIBUTION STATEMENT (of this Report) Approved for public release; distribution unlimited.		
17. DISTRIBUTION STATEMENT (of the abstract entered in Block 20, if different from Report)		
18. SUPPLEMENTARY NOTES		
19. KEY WORDS (Continue on reverse side if necessary and identify by block number) Achievement Admissions Characteristics Freshmen		
20. ABSTRACT (Continue on reverse side if necessary and identify by block number) This report presents the biographical characteristics and achievements of the 1,428 new cadets who entered the United States Military Academy in the Class of 1989.		

END

FILMED

12-85

DTIC