

AD-A160 184

AN EXTENSION OF SPITZER'S INTEGRAL REPRESENTATION
THEOREM WITH AN APPLICA. (U) PITTSBURGH UNIV PA CENTER
FOR MULTIVARIATE ANALYSIS A A ALZAID ET AL. APR 85

1/1

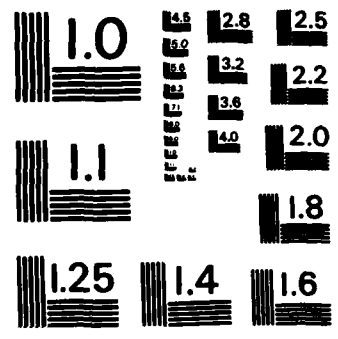
UNCLASSIFIED

TR-85-11 AFOSR-TR-85-0056 F49620-85-C-0000 F/G 12/1

NL



END
FILMED
DTIC



MICROCOPY RESOLUTION TEST CHART
NATIONAL BUREAU OF STANDARDS-1963-A

2

REPORT DOCUMENTATION PAGE

AD-A160 184

1b. RESTRICTIVE MARKINGS

3. DISTRIBUTION/AVAILABILITY OF REPORT

Approved for public release; distribution unlimited.

2b. DECLASSIFICATION/DOWNGRADING SCHEDULE

4. PERFORMING ORGANIZATION REPORT NUMBER(S)

N/A

6. MONITORING ORGANIZATION REPORT NUMBER(S)

AFOSR-TR-85-0856

6a. NAME OF PERFORMING ORGANIZATION

Center for Multivariate Analysis

6b. OFFICE SYMBOL (If applicable)

7a. NAME OF MONITORING ORGANIZATION

AFOSR

6c. ADDRESS (City, State and ZIP Code)

515 Thackeray Hall
University of Pittsburgh, PA 15260

7b. ADDRESS (City, State and ZIP Code)

Bldg. 410
Bolling AFB, D.C. 20332-6448

8a. NAME OF FUNDING/SPONSORING ORGANIZATION

AFOSR

8b. OFFICE SYMBOL (If applicable)

NM

9. PROCUREMENT INSTRUMENT IDENTIFICATION NUMBER

F49620-85-C-0008

8c. ADDRESS (City, State and ZIP Code)

Bldg. 410
Bolling AFB, D.C. 20332-6448

10. SOURCE OF FUNDING NOS.

PROGRAM ELEMENT NO.	PROJECT NO.	TASK NO.	WORK UNIT NO.
61102F	2304	A5	

11. TITLE (Include Security Classification)

An Extension of Spitzer's Integral Representation Theorem with an Application

12. PERSONAL AUTHOR(S)

Abdul Hamid A. Alzaid, C. Radhakrishna Rao and D. M. Shanbhag

13a. TYPE OF REPORT

Interim

13b. TIME COVERED

FROM TO

14. DATE OF REPORT (Yr., Mo., Day)

April 1985

15. PAGE COUNT

10

16. SUPPLEMENTARY NOTATION

17. COSATI CODES

FIELD	GROUP	SUB. GR.
	XXXXXXXXXX	

18. SUBJECT TERMS (Continue on reverse if necessary and identify by block number)

Branching process, Cauchy equation, Damage Models, Potential theory of Markoff chains, Rao-Rubin condition

19. ABSTRACT (Continue on reverse if necessary and identify by block number)

Using a new approach, an extended version of Spitzer's integral representation for stationary measures of a discrete branching process is obtained. This result is used to provide a complete solution to a problem in damage models satisfying a generalized Rao-Rubin condition. Additional keywords: Cauchy equation; potential theory, Markov chains

DTIC FILE COPY

DTIC SELECTED OCT 15 1985

20. DISTRIBUTION/AVAILABILITY OF ABSTRACT

UNCLASSIFIED/UNLIMITED SAME AS RPT. DTIC USERS

21. ABSTRACT SECURITY CLASSIFICATION

Unclassified

22a. NAME OF RESPONSIBLE INDIVIDUAL

Reian W. Woodruff MAJ USAF

22b. TELEPHONE NUMBER (Include Area Code)

(202)767-5027

22c. OFFICE SYMBOL

NM

AN EXTENSION OF SPITZER'S INTEGRAL REPRESENTATION THEOREM WITH AN APPLICATION*

by

Abdulhamid A. Alzaid, C. Radhakrishna Rao and D. N. Shanbhag

King Saud University, Saudia Arabia, University of Pittsburgh, U.S.A. and The University of Sheffield, U.K.



April 1985
Technical Report No. 85-11

Center for Multivariate Analysis
Thackeray Hall
University of Pittsburgh
Pittsburgh, PA 15260

Accession For	
NTIS CRA&I	<input checked="" type="checkbox"/>
DTIC TAB	<input checked="" type="checkbox"/>
Unannounced	<input type="checkbox"/>
Justification	
By	
Distribution/	
Availability Codes	
Dist	Avail and/or Special
A1	

*The work of the last two authors was supported by the Air Force Office of Scientific Research under Contract F49620-85-C-0008. The United States Government is authorized to reproduce and distribute reprints for governmental purposes not withstanding any copyright notation herein.

Approved for public release;
distribution unlimited

AN EXTENSION OF SPITZER'S INTEGRAL
REPRESENTATION THEOREM WITH AN APPLICATION

by

Abdulhamid A. Alzaid, C. Radhakrishna Rao and
D.N. Shanbhag

King Saud University, Saudi Arabia,
University of Pittsburgh, U.S.A. and
The University of Sheffield, U.K.

Summary Using a new approach, an extended version of Spitzer's integral representation for stationary measures of a discrete branching process is obtained. This result is used to provide a complete solution to a problem in damage models satisfying a generalized Rao-Rubin condition.

Key Words: Branching process, Cauchy equation, Damage Models, Potential theory of Markoff chains, Rao-Rubin condition.

AMS Subject Classification: 60E05, 62E10.

1. INTRODUCTION

Consider a modified discrete branching process $\{Z_n; n = 0, 1, \dots\}$ with one step transition probabilities given by

$$(1.1) \quad p_{ij} = P(Z_{n+1} = j | Z_n = i) = \begin{cases} c p_j^{(i)}, & i = 0, 1, \dots; j = 1, 2, \dots \\ 1 - c + c p_0^{(i)}, & i = 0, 1, \dots; j = 0 \end{cases}$$

where $0 < c \leq 1$ and $\{p_j^{(i)}\}$ is the i -fold convolution of some nondegenerate probability distribution $\{p_j\}$ with itself for $i > 0$ and the degenerate distribution at zero if $i = 0$. (It is seen that the process reduces to Bienaymé-Galton-Watson branching process when $c = 1$). Define

$$(1.2) \quad m = \sum_{j=1}^{\infty} j p_j, \quad m^* = \sum_{j=1}^{\infty} (j \log j) p_j.$$

In this paper, we extend the Spitzer's integral representation for stationary measures of a Bienaymé-Galton-Watson process with $m < 1$ and $m^* < \infty$ to a branching process of the type defined in (1.1). Such an extension could be arrived at by using arguments similar to those of Spitzer (1967) based on the potential theory of Markoff chains. However, we give a new approach based on Bernstein's theorem on absolutely monotonic functions. We use the extended version of Spitzer's theorem to obtain a complete identification of the solutions to a certain functional equation in damage models considered earlier by Talwalker (1980) and Rao et al. (1980), and thus establish a link between branching processes and damage models.

AIR FORCE OFFICE OF SCIENTIFIC RESEARCH (AFOSR)
 NOTICE
 Chief, Technical Division

2. AN EXTENDED VERSION OF SPITZER'S INTEGRAL REPRESENTATION

We establish the following theorems.

Theorem 1. The generating function $U(s) = \sum \eta_j s^j$ of any stationary measure $\{\eta_j\}$ of the modified branching process defined in (1.1) is analytic for $|s| < q$ where q is the smallest non-negative root of the equation $s = f(s)$, and (if normalized so that $U(p_0) = 1$) satisfies the equation

$$(2.1) \quad cU(f(s)) = c + U(s)$$

where $f(s)$ is the g.f. (generating function) of $\{p_j\}$. Conversely, if $U(s) = \sum \eta_j s^j$, $\eta_j \geq 0$, $|s| < q$ satisfies (2.1), then $\{\eta_j\}$ is a stationary measure.

Proof If $U(s)$ is analytic for $|s| < s_0$ for some $s_0 > 0$, then

$$\begin{aligned} U(s) &= \sum_{j=1}^{\infty} \eta_j s^j = \sum_{i=1}^{\infty} \eta_i \sum_{j=1}^{\infty} p_{ij} s^j \\ &= c \sum_{i=1}^{\infty} \eta_i ([f(s)]^i - [f(0)]^i) \\ &= c(U(f(s)) - U(p_0)), \quad |s| < s_0 \end{aligned}$$

which implies that (2.1) is valid at least for $|s| < s_0$. Then using the arguments exactly as in A.N. (Theorem 2, p. 68), [where we use the abbreviation A.N. for the book by Athreya and Ney (1972)], we find that $U(s)$ is analytic for $|s| < q$. The converse assertion easily follows by equating the coefficients of s^j in (2.1).

Theorem 2. (An extended version of Spitzer's theorem). If $m < 1$ and $m^* < \infty$ with f as in Theorem 1, then for every probability measure ν on $[0, 1)$

$$(2.2) \quad U(s) = K \int_{[0,1)} U(s,t) dv(t)$$

is the g.f. of a stationary measure, where

$$U(s,t) = \sum_{n=-\infty}^{\infty} [\exp\{(\mathcal{B}(s)-1)m^{n-t}\} - \exp\{-m^{n-t}\}] c^{n-t}$$

with $\mathcal{B}(s)^{\dagger}$ as the unique p.g.f. among those vanishing at $s=0$ and satisfying the equation

$$(2.3) \quad \mathcal{B}(f(s)) = m\mathcal{B}(s) + 1-m.$$

Conversely, every stationary measure has the representation (2.2) for some probability measure ν on $[0,1)$.

Proof The first part of the Theorem is easily verified. To prove the converse, it is sufficient to establish that the representation is valid for every $s \in [0,1)$. Define then for every $s \in [0,1)$

$$U^*(s) = U(\mathcal{B}^{-1}(s))$$

where \mathcal{B} is as mentioned in the statement of Theorem 2. In view of Theorem 1 and the equation (2.3) we have

$$(2.4) \quad c^n U^*(m^n s + 1 - m^n) = U^*(s) + \xi_n, \quad n = 1, 2, \dots; \quad 0 \leq s < 1,$$

where

$$\xi_n = \begin{cases} c \left(\frac{1-c^n}{1-c} \right) & \text{if } c \neq 1, \\ n & \text{if } c = 1. \end{cases}$$

We can write (2.4) also as

[†]For an interpretation of \mathcal{B} in branching processes, see A.N. (p. 17).

$$U^*(s) = c^n U(1 + m^n Q_n(B^{-1}(s))) - \xi_n, \quad n = 1, 2, \dots; \quad 0 \leq s < 1,$$

where $Q_n(s) = [f_n(s) - 1]/m^n$ with $f_n(s)$ as the n -th iterate of $f(s)$. Consequently

$$(2.5) \quad U^*(s) = \lim_{n \rightarrow \infty} \{c^n U(1 + m^n Q_n(0) - m^n Q_n(0) B_n(B^{-1}(s))) - \xi_n\}$$

for $0 \leq s < 1$, where $B_n(s) = [Q_n(0) - Q_n(s)]/Q_n(0)$. If $0 \leq s_1 < s < s_2 < 1$, then noting in particular that $B_n \rightarrow B$ pointwise (see A.N., p. 47), and B and B^{-1} are strictly increasing on $[0, 1)$, we find that

$$(2.6) \quad -m^n Q_n(0) B_n(B^{-1}(s_1)) < -m^n Q_n(0) s < -m^n Q_n(0) B(B^{-1}(s)) \\ < -m^n Q_n(0) B_n(B^{-1}(s_2))$$

for large enough n . Since U is increasing on $[0, 1)$ we obtain from (2.5) using

(2.6)

$$(2.7) \quad U^*(s_1) \leq \lim_{n \rightarrow \infty} \{c^n U(1 + m^n Q_n(0) - m^n Q_n(0) s) - \xi_n\} \\ \leq \overline{\lim}_{n \rightarrow \infty} \{c^n U(1 + m^n Q_n(0) - m^n Q_n(0) s) - \xi_n\} \leq U^*(s_2).$$

It is seen that $U^*(s)$ is continuous and $U^*(0) = 0$, and hence from (2.7) we have for $s \in [0, 1)$

$$(2.8) \quad U^*(s) = \lim_{n \rightarrow \infty} \{c^n U(1 + m^n Q_n(0) - m^n Q_n(0) s) - \xi_n\} \\ = \lim_{n \rightarrow \infty} \{c^n [U(1 + m^n Q_n(0) - m^n Q_n(0) s) - U(1 + m^n Q_n(0))]\}$$

for $s \in [0, 1)$, with the limits well defined. Since for each $n \geq 1$, the expression within the second limit in (2.8) can be expressed as the g.f. of some non-negative sequence for $s \in [0, 1)$, the extended continuity theorem given in Feller (1971,

p. 433) implies that U^* is the g.f. of a non-negative sequence. Define now a function \hat{U} on $(-\infty, 1)$ such that its restriction to $[0, 1)$ is indeed U^* and for any $s \in (-\infty, 0)$

$$\hat{U}(s) = c^n U^*(m^n s + 1 - m^n) - \xi_n$$

where n is the smallest integer for which $m^n s + 1 - m^n \in [0, 1)$. It is easily seen that

$$(2.9) \quad c^n \hat{U}(m^n s + 1 - m^n) = \hat{U}(s) + \xi_n, \quad n = 1, 2, \dots; \quad s \in (-\infty, 1)$$

which, since $\hat{U} = U^*$ on $[0, 1)$, implies that \hat{U}' (i.e., $d\hat{U}(s)/ds$, $s \in (-\infty, 1)$) exists and is absolutely monotonic on $(-\infty, 1)$ with $\lim_{s \rightarrow -\infty} \hat{U}'(s) = 0$ as $s \rightarrow -\infty$. Since $\hat{U}(0) = 0$, we conclude from Bernstein's theorem that for some measure μ on $(0, \infty)$

$$(2.10) \quad \hat{U}(s) = \int_{(0, \infty)} (e^{sx} - 1) d\mu(x), \quad s \in (-\infty, 1).$$

From the equation (2.9), we find that the measure μ is such that

$$(2.11) \quad c^n \int_{(0, \infty)} (e^{sxm^n} - 1) e^{(1-m^n)x} d\mu(x) = \int_{(0, \infty)} (e^{sx} - 1) d\mu(x)$$

$$n = 1, 2, \dots; \quad s \in (-\infty, 1).$$

If $s_0 \in (-\infty, 1)$ and $s \in (-\infty, 0]$, then subtracting the identity (2.11) from the corresponding identity with s replaced by $s + s_0$ we obtain

$$(2.12) \quad c^n \int_{(0, \infty)} e^{sxm^n} (e^{s_0xm^n} - 1) e^{(1-m^n)x} d\mu(x) = \int_{(0, \infty)} e^{sx} (e^{s_0x} - 1) d\mu(x)$$

which is valid for all $s \in (-\infty, 0]$. Then, in view of the uniqueness theorem for Laplace-Stieltjes transforms, (2.12) implies

$$(2.13) \quad \int_{[m^n, m^{n-1})} (e^{s_0 x} - 1) d\mu(x) = c^n \int_{[1, m^{-1})} (e^{s_0 x m^n} - 1) e^{(1-m^n)x} d\mu(x)$$

for $n = 0, \pm 1, \pm 2, \dots$. Since s_0 in (2.13) is arbitrary, we conclude using (2.10) that

$$(2.14) \quad \begin{aligned} U^*(s) = \hat{U}(s) &= \sum_{n=-\infty}^{\infty} \int_{[m^n, m^{n-1})} (e^{sx} - 1) d\mu(x) \\ &= \int_{[1, m^{-1})} \sum_{n=-\infty}^{\infty} c^n (e^{-(1-s)xm^n} - e^{-xm^n}) e^x d\mu(x) \\ &= K \int_{[0, 1)} \left\{ \sum_{n=-\infty}^{\infty} c^{n-t} (e^{-m^{n-t}(1-s)} - e^{-m^{n-t}}) \right\} dv(t) \end{aligned}$$

for $s \in [0, 1)$, where K is a positive constant and ν is a probability measure on $[0, 1)$ such that for every Borel subset A of $[0, 1)$ we have

$$(2.15) \quad \nu(A) = K^{-1} \int_{S_A} e^x c^{-\log x / \log m} d\mu(x),$$

where $S_A = \{x: (-\log x / \log m) \in A\}$. [The operation of interchanging the order of summation and integration in (2.14) is justified by either Fubini's theorem or monotone convergence theorem.] The required result now follows on observing that $U(s) = U^*(\mathcal{B}(s))$, $s \in [0, 1)$.

Remark 1. In the definition 2 on page 432 of Feller (1971), $\overline{0, \infty}$ should be changed to $\overleftarrow{0, \infty}$ to make the extended continuity theorem given on page 433 non-ambiguous. [We used this theorem in the proof of our Theorem 2.]

Remark 2. If we define $G(i, j)$ to be the Green function corresponding to the substochastic matrix (p_{ij}) , $i, j = 1, 2, \dots$, then an argument essentially as in A.N. (p. 70) implies that for every subsequence of positive integers $\{k_i\}$ such

that the fractional part of $(-\log k_1)/\log m \rightarrow t$ with $t \in [0,1)$ we have

$$\frac{\sum_{j=1}^{\infty} G(k_1, j) s^j}{G(k_1, 1)} \rightarrow U^*(s, t) = \frac{\tilde{U}(s, t)}{\tilde{U}'(0, t)}$$

where $\tilde{U}(s, t)$ is the $U(s, t)$ of Theorem 2 with m^{n-t} replaced by $(-Q(0)m^{n-t})$, $Q(0)$ being as defined in A.N. (p. 40), and

$$\tilde{U}'(0, t) = \left. \frac{\partial \tilde{U}(s, t)}{\partial s} \right|_{s=0}.$$

We note that the proof in AN (p. 69) remains valid in the present case as well with $U(s, t)$ changed to $U^*(s, t)$. Consequently, the Poisson-Martin integral representation for a stationary measure analogous to the one given in Seneta (1973, p. 151) for a super regular vector yields the validity of our Theorem 2 with $U(s, t)$ replaced by $\tilde{U}(s, t)$. Now, it is easy to verify that Theorem 2 remains valid even when $Q(0)$ is not necessarily equal to -1 and hence we have an alternative proof of Theorem 2.

Remark 3. The version of Theorem 2 with $U(s, t)$ replaced by $\tilde{U}(s, t)$ of Remark 2 yields Spitzer's theorem when $c = 1$.

Corollary. If $f(s) = 1 - m + ms$, then every sequence $\{n_j\}$ is a stationary measure iff it is of the following form:

$$(2.16) \quad n_j = K \sum_{n=-\infty}^{\infty} \int_{[0,1)} c^{n-t} e^{-m^{n-t}} \frac{m^{(n-t)j}}{j!} dv(t), \quad j = 1, 2, \dots$$

where ν is a probability measure on $[0,1)$, and K is a positive constant as in Theorem 2.

The result (2.16) is obvious from Theorem 2 in view of the fact that $B(s) = s$.

3. AN APPLICATION TO DAMAGE MODELS

Let (X, Y) and (X', Y') be 2-vector random variables with non-negative integer valued components such that X and X' have the same marginal distribution $\{g_n\}$ with $g_0 < 1$, and Y and Y' are such that for each n with $g_n > 0$

$$P(Y = r | X = n) = \binom{n}{r} \pi^r (1-\pi)^{n-r}, \quad r = 0, 1, \dots, n,$$

$$P(Y' = r | X' = n) = \binom{n}{r} \pi'^r (1-\pi')^{n-r}, \quad r = 0, 1, \dots, n,$$

where $0 < \pi', \pi < 1$ are fixed. Talwalker (1980) and Rao et al. (1980) considered the problem of characterizing the distributions of X and X' by the equation

$$(3.1) \quad P(Y = r) = P(Y' = r | X' = Y'), \quad r = 0, 1, \dots$$

which is an extended version of the Rao-Rubin condition (Rao and Rubin, 1964).

It is seen that (3.1) is equivalent to

$$(3.2) \quad G(1-\pi + \pi s) = G(s\pi') / G(\pi'), \quad |s| \leq 1$$

where G is the g.f. of $\{g_n\}$.

When $\pi = \pi'$, (3.1) is the Rao-Rubin condition, and it is shown by Rao and Rubin (1964) using Bernstein's theorem and in a simpler way by Shanbhag (1974), that in this case G is the p.g.f. of a Poisson distribution. When $\pi > \pi'$, it is easily seen that G is the p.g.f. of a binomial distribution with an arbitrary index and success probability $(\pi - \pi') / (\pi(1 - \pi'))$.

When $\pi < \pi'$, the picture is totally different, and the family of distributions $\{g_n\}$ for which (3.1) holds is somewhat curious and fairly large. Talwalker (1980) and Rao et al (1980) identified the family as a mixture of Poisson distributions with the mixing measure itself satisfying a further functional equation. The

following theorem gives a complete identification of the solution and provides a more satisfactory answer and a rigorous proof to the characterization problem than that given earlier.

Theorem 3. Let (X,Y) and (X',Y') be 2-vector random variables as considered above with $0 < \pi < \pi' < 1$. Then (3.1) is valid if and only if

$$g_j = K \sum_{-\infty}^{\infty} \int_{[0,1)} c^{n-t} e^{-(\pi/\pi')^{n-t}} \frac{(\pi/\pi')^{(n-t)j}}{j!} \left[\frac{\pi' - \pi}{\pi'(1-\pi)} \right]^j d\nu(t), \quad j=0,1,\dots$$

where ν is a probability measure on $[0,1)$ and c is a real number lying in $(0,1)$ and K is a normalizing constant.

The result follows from the Corollary to Theorem 2 (see equation (2.16)) since (3.1) is equivalent to (3.2) which can be written as

$$cU(1-m+ms) = U(s) + cU(1-m)$$

with

$$g_0 = \frac{c}{1-c} U(1-m), \quad m = \frac{\pi}{\pi'}$$

$$U(s) = G\left(\frac{(1-\pi)\pi'}{\pi' - \pi} s\right) - g_0.$$

Observe that (3.2) implies that the p.g.f. $G(s)$ is defined for all s such that $|s| < \pi'(1-\pi)/(\pi' - \pi)$ and it satisfies (3.2) for every

$$s \in \left(-\frac{\pi'(1-\pi)}{\pi' - \pi}, \frac{\pi'(1-\pi)}{\pi' - \pi}\right).$$

Remark 4. If the measure ν in Theorem 3 is taken as the Lebesgue measure on $[0,1)$, then the distribution $\{g_n\}$ in question reduces to a negative binomial distribution.

Remark 5. It is interesting to note that if a p.g.f. G satisfies (3.2) simultaneously for two pairs (π_i, π_i') , $i = 1, 2$, where $0 < \pi_i < \pi_i' < 1$ and $(\log \pi_1 - \log \pi_1') / (\log \pi_2 - \log \pi_2')$ is irrational, then G is the p.g.f. of a negative binomial distribution of the form

$$G(s) = \frac{\{[\pi_1'(1-\pi_1)]/(\pi_1'-\pi_1)]-1\}^\alpha}{\{[\pi_1'(1-\pi_1)]/(\pi_1'-\pi_1)]-s\}^\alpha}$$

for some $\alpha > 0$. Since the condition implies G to be well defined also on $(1, s_0)$ where $s_0 = \pi_1'(1-\pi_1)/(\pi_1'-\pi_1)$, the result in question follows as a corollary to the result of Marsaglia and Tubilla (1975) by noting in particular that $f(x) = G(s_0 - s_0 e^{-x})/G(0)$, $x \geq 0$ is well defined and satisfies the equation $f(t_i + x) = f(t_i)f(x)$, $x \geq 0$, $i = 1, 2$ with $t_i = \log(\pi_i'/\pi_i)$, $i = 1, 2$. The same result was established in Rao et al (1980) by a different and slightly more involved method.

4. REFERENCES

- [1] Feller, W. (1971). Introduction to Probability and its Applications, Vol. 2 Wiley, New York. (Second edition).
- [2] Marsaglia, G. and Tabilla, A. (1975). A note on the lack of memory property of the exponential distribution. Ann. Prob., 3, 352-354.
- [3] Rao, C.R. and Rubin, H. (1964). On a characterization of the Poisson Distribution. Sankhya, Ser. A, Vol. 26, 295-298.
- [4] Rao, C.R., Srivastava, R.C., Talwalker, S. and Edgar, G.A. (1980). Characterization of probability distributions based on generalized Rao-Rubin condition. Sankhya, Ser. A, Vol. 42, 161-169.
- [5] Seneta, E. (1973). Non-negative Matrices. George Allen & Unwin Ltd., London.
- [6] Shanbhag, D.N. (1974). An elementary proof for the Rao-Rubin characterization of the Poisson distribution. J. Appl. Prob., 211-215.
- [7] Talwalker, S. (1980). A note on the generalized Rao-Rubin condition and characterization of certain discrete distributions. J. Appl. Prob 17, 563-569.

END

FILMED

11-85

DTIC