

AD-A158 326

CIVILIAN MANPOWER STATISTICS THIRD QUARTER FY-85(U)
WASHINGTON HEADQUARTERS SERVICES (DOD) DC DIRECTORATE
FOR INFORMATION OPERATIONS AND REPORTS 30 JUN 85
DIOR/M04-85/03

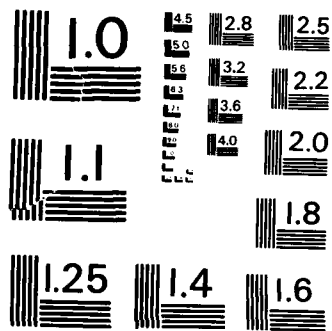
1/1

UNCLASSIFIED

F/G 5/9

NL





MICROCOPY RESOLUTION TEST CHART
NATIONAL BUREAU OF STANDARDS - 1963 - A

M04
DIER/MOH-85/03

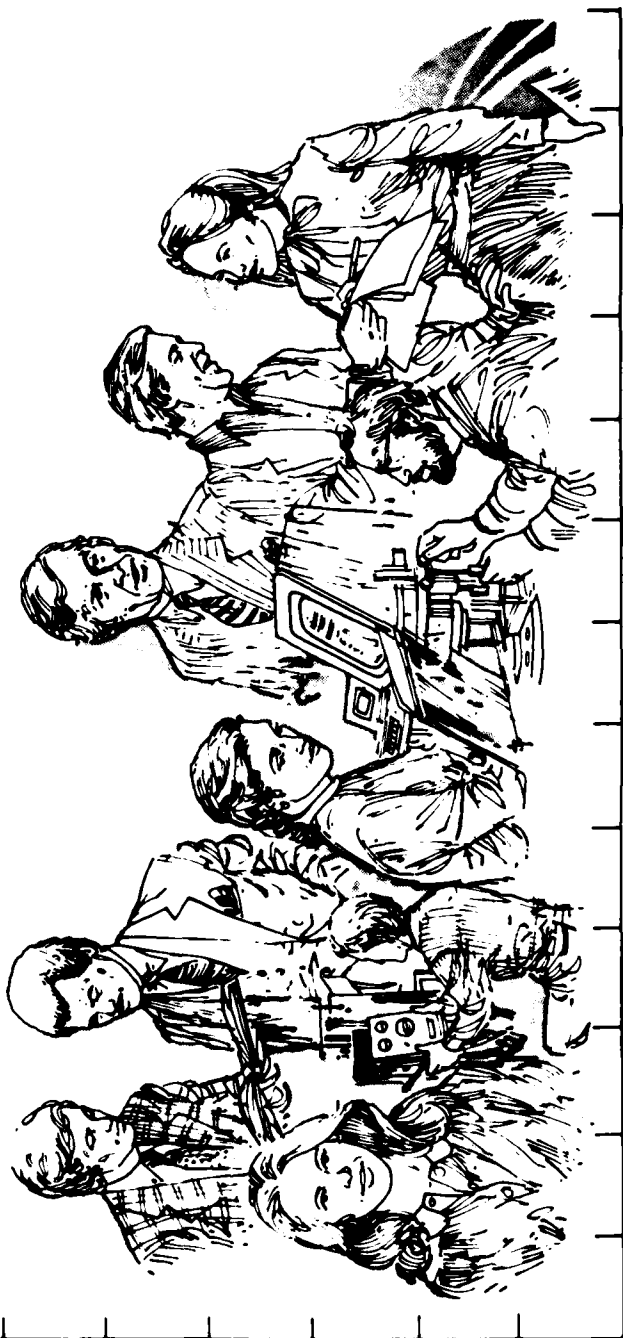
Department of Defense

CIVILIAN MANPOWER STATISTICS

JUNE 1985

Third Quarter, FY-85

① H158326



Department of Defense
Civilian Manpower Statistics

June 30, 1985

Issued Quarterly by
Directorate for Information
Operations and Reports (DIOR)

FOR SALE BY THE SUPERINTENDENT OF DOCUMENTS
U.S. GOVERNMENT PRINTING OFFICE
WASHINGTON, D.C. 20402

FOREWORD

Civilian Manpower Statistics (CMS) is a quarterly publication prepared by the Washington Headquarters Services, Directorate for Information Operations and Reports (WHS/DIOR) of the Office of the Secretary of Defense.

CMS provides statistical information on the civilian work force of the Department of Defense (DoD), with the exception of personnel of the National Security Agency, the Defense Intelligence Agency, and personnel paid from nonappropriated funds. It is produced primarily from a computerized data base developed and maintained by WHS/DIOR from monthly information provided to the Office of Personnel Management on SF-113A, Monthly Report of Federal Civilian Employment.

TABLE OF CONTENTS

TABLE		PAGE
1	DoD Civilian Employment, by Function and Employment Status, According to Defense Component: June 30, 1985	1
2	Trends in DoD Civilian Employment Subject to OMB Ceiling, by Function, Employment Status, and Defense Component	2
3	DoD Direct Hire Civilian Personnel Subject to OMB Ceilings, by Function and Defense Component	3
4	DoD Direct and Indirect Hire Civilian Personnel, by Component (Excluding the Military Departments), According to Type: June 30, 1985	4
5	DoD Direct Hire Civilian Personnel, by Type, According to Defense Component: June 30, 1985	5
6	DoD Civilian Personnel, by Location and Type, According to Defense Component: June 30, 1985	6
7	DoD Indirect Hire Civilian Personnel, by Country, According to Defense Component: June 30, 1985	7
	GLOSSARY	8

TABLE 1

DoD Civilian Employment, by Function and Employment Status,
According to Defense Component: June 30, 1985

FUNCTION/EMPLOYMENT STATUS	TOTAL DoD a/	ARMY	NAVY b/	AIR FORCE	OTHER DoD ORGANIZATIONS c/
MILITARY FUNCTIONS					
OMB Ceiling Employment	1,138,016	431,519	356,682	269,425	80,390
Direct Hire	1,051,851	371,070	345,981	256,115	78,685
Indirect Hire	86,165	60,449	10,701	13,310	1,705
Total Employment	1,152,233	435,287	362,563	272,203	82,180
Direct Hire	1,066,068	374,838	351,862	258,893	80,475
Indirect Hire	86,165	60,449	10,701	13,310	1,705
CIVIL FUNCTIONS (ALL DIRECT HIRE)					
OMB Ceiling Employment	30,777	30,773	0	4	0
Total Employment	33,222	33,218	0	4	0
TOTAL MILITARY AND CIVIL FUNCTIONS					
OMB Ceiling Employment	1,168,793	462,292	356,682	269,429	80,390
Direct Hire	1,082,628	401,843	345,981	256,119	78,685
Indirect Hire	86,165	60,449	10,701	13,310	1,705
Total Employment	1,185,455	468,505	362,563	272,207	82,180
Direct Hire	1,099,290	408,056	351,862	258,897	80,475
Indirect Hire	86,165	60,449	10,701	13,310	1,705

a/ Included in Total Employment but excluded from Office of Management and Budget (OMB) Ceiling Employment are employees exempt from OMB ceiling control. Refer to Office of Personnel Management Federal Personnel Manual System Supplement 298-2, Subchapter 53, for a delineation of employment exempt from ceiling control.

b/ Includes Marine Corps civilian personnel.

c/ See the Glossary for a list of Other DoD Organizations.

TABLE 2

Trends in DoD Civilian Employment Subject to OMB Ceiling,
By Function, Employment Status, and Defense Component

FUNCTION/COMPONENT EMPLOYMENT STATUS	END STRENGTHS, LAST 4 FISCAL YEARS				LAST 3 MONTHS		
	30 SEP 81	30 SEP 82	30 SEP 83	30 SEP 84	30 APR 85	31 MAY 85	30 JUN 85
MILITARY FUNCTIONS	1,019,466	1,029,854	1,067,824	1,089,585	1,124,403	1,129,872	1,138,016
DIRECT HIRE ^{a/}	939,942	947,061	983,644	1,004,488	1,037,264	1,042,842	1,051,851
INDIRECT HIRE ^{b/}	79,524	82,793	84,180	85,097	87,139	87,030	86,165
ARMY	372,111	379,316	392,346	405,084	419,876	424,784	431,519
DIRECT HIRE	318,278	322,057	333,722	345,194	359,512	364,365	371,070
INDIRECT HIRE	53,833	57,259	58,624	59,890	60,364	60,419	60,449
NAVY	320,858	319,554	339,552	342,851	353,406	355,904	356,682
DIRECT HIRE	310,123	308,885	328,907	332,468	342,886	344,300	345,981
INDIRECT HIRE	10,735	10,669	10,645	10,383	10,520	11,604	10,701
AIR FORCE	246,165	248,508	252,330	253,884	264,139	264,277	269,425
DIRECT HIRE	232,933	235,456	239,367	240,903	248,794	250,972	256,115
INDIRECT HIRE	13,232	13,052	12,963	12,981	15,345	13,305	13,310
OTHER DoD ORGANIZATIONS ^{c/}	80,332	82,476	83,596	87,766	86,982	84,907	80,390
DIRECT HIRE	78,608	80,663	81,648	85,923	86,072	83,205	78,685
INDIRECT HIRE	1,724	1,813	1,948	1,843	910	1,702	1,705
CIVIL FUNCTIONS ^{a/}	31,800	31,573	32,823	28,974	28,598	29,939	30,777
(ALL DIRECT HIRE)	31,796	31,569	32,819	28,972	28,594	29,939	30,773
Army	4	4	4	2	4	0	4
Air Force							
TOTAL MILITARY AND CIVIL FUNCTIONS	1,051,266	1,061,427	1,100,647	1,118,559	1,153,001	1,159,811	1,168,793
DIRECT HIRE ^{a/}	971,742	978,634	1,016,467	1,033,462	1,065,862	1,072,781	1,082,628
INDIRECT HIRE ^{b/}	79,524	82,793	84,180	85,097	87,139	87,030	86,165

a/ As reported officially to the Office of Personnel Management

b/ Foreign Nationals supporting U.S. Military Forces overseas under contracts or agreements with foreign governments

c/ See Glossary for a list of Other DoD Organizations

TABLE 3

DoD Direct Hire Civilian Personnel Subject to OMB Ceiling,
by Function and Defense Component

FUNCTION/COMPONENT	TOTAL EMPLOYMENT				FULL-TIME WITH PERMANENT APPOINTMENTS			
	30 APR 85	31 MAY 85	30 JUN 85	PROGRAMMED STRENGTH 30 SEP 84	30 APR 85	31 MAY 85	30 JUN 85	
MILITARY FUNCTIONS	1,037,264	1,042,842	1,051,851	968,120	910,395	909,233	906,715	
Army	359,512	364,365	371,070	331,644	304,562	305,314	305,148	
Navy	342,886	344,300	345,981	319,907	302,947	303,438	303,557	
Air Force	248,794	250,972	256,123	232,823	224,624	225,325	225,573	
OSD & Organizations Serviced by OSD a/	3,737	3,858	3,927	2,707	3,528	3,555	3,579	
Defense Audiovisual Agency	1,240	1,237	1,232	1,502	1,232	1,229	1,225	
Defense Communications Agency	1,829	1,910	1,962	1,751	1,733	1,729	1,761	
Defense Contract Audit Agency	4,178	4,237	4,343	3,742	4,107	4,153	4,242	
Defense Investigative Service	3,498	3,505	3,505	3,455	3,350	3,350	3,332	
Defense Logistics Agency	49,704	49,890	50,524	48,192	47,402	47,515	47,839	
Defense Mapping Agency	8,955	9,061	9,101	8,650	8,727	8,793	8,795	
Defense Nuclear Agency	8,705	8,724	9,753	8,670	640	636	640	
Department of Defense Dependent Schools	12,395	12,429	3,485	10,481	7,857	7,859	1,341	
Uniformed Services University of the Health Sciences	831	859	853	711	686	687	683	
CIVIL FUNCTIONS	28,598	29,939	30,777	N/A	26,231	26,442	26,591	
Army	28,594	29,939	30,773		26,227	26,442	26,587	
Air Force	4	0	4		4	0	4	
TOTAL MILITARY AND CIVIL FUNCTIONS	1,065,862	1,072,781	1,082,628	N/A	936,626	935,675	933,306	

a/ See the Glossary for a list of OSD and Organizations Serviced by OSD.

TABLE 4

DoD Direct and Indirect Hire Civilian Personnel by Component,
According to Type (Excluding the Military Departments)

30 JUN 85

DEFENSE COMPONENT	TOTAL	DIRECT HIRE CIVILIANS	INDIRECT HIRE CIVILIANS
TOTAL	82,180	80,475	1,705
OSD And Organizations Serviced by OSD a/	3,998	3,984	14
Defense Audiovisual Agency	244	244	0
Defense Communications Agency	2,063	2,053	10
Defense Contract Audit Agency	4,431	4,426	5
Defense Investigative Service	3,538	3,538	0
Defense Logistics Agency	52,755	51,866	889
Defense Mapping Agency	9,246	9,244	2
Defense Nuclear Agency	769	769	0
Department of Defense Dependents Schools	4,270	3,485	785
Uniformed Services University of the Health Sciences	866	866	0

a/ See the Glossary for a list of OSD and Organizations Serviced by OSD.

TABLE 5

DoD Direct Hire Civilian Personnel, by Type,
According to Defense Component: June 30, 1985

TYPE OF PERSONNEL	TOTAL DoD	ARMY	NAVY	AIR FORCE	OTHER DoD ORGANIZATIONS a/
TOTAL	1,099,290	408,056	351,862	258,897	80,475
BY STATUS					
Full-Time	1,068,931	395,149	344,589	251,780	77,413
Part-Time	25,235	10,321	6,441	5,855	2,618
Intermittent	5,124	2,586	832	1,262	444
BY CAREER SERVICE CATEGORY					
Competitive	909,821	322,370	305,776	210,707	70,968
Excepted and SES	189,469	85,686	46,086	48,190	9,507
BY TYPE OF APPOINTMENT					
Permanent	945,444	337,005	306,582	228,494	73,363
Temporary/Indefinite	153,846	71,051	45,280	30,403	7,112
BY CITIZENSHIP					
U.S. Citizens	1,056,818	391,222	334,745	250,859	79,992
Non-Citizens	42,472	16,834	17,117	8,038	483
BY LABOR CATEGORY					
Salaries	733,736	285,749	210,675	167,824	69,488
Wage Board	365,554	122,307	141,187	91,073	10,987

a/ See the Glossary for a list of Other DoD Organizations.

TABLE 6

DoD Direct Hire Civilian Personnel, by Location/Type,
According to Defense Component: June 30, 1985 a/

LOCATION/TYPE OF PERSONNEL	TOTAL DoD	ARMY	NAVY	AIR FORCE	OTHER DoD ORGANIZATIONS b/
WORLDWIDE TOTAL	1,099,290	408,056	351,862	258,897	80,475
UNITED STATES	1,001,028	358,884	325,832	240,007	76,305
By Location Washington, D.C., SMSA c/ Remainder of U. S.	89,320 911,708	29,581 329,303	39,027 286,805	6,610 233,397	14,102 62,203
By Labor Category Salaried Wage Board	675,869 325,159	260,885 97,999	199,179 126,653	150,274 89,733	65,531 10,774
By Citizenship U. S. Citizens Non-Citizens	1,000,330 698	358,488 396	325,614 218	239,980 27	76,248 57
U. S. TERRITORIES	7,420	1,125	5,244	976	75
By Labor Category Salaried Wage Board	3,637 3,783	752 373	2,411 2,833	412 564	62 13
By Citizenship U. S. Citizens Non-Citizens	7,349 71	1,124 1	5,193 51	976 0	56 19
FOREIGN COUNTRIES	90,842	48,047	20,786	17,914	4,095
By Labor Category Salaried Wage Board	54,230 36,612	24,112 23,935	9,085 11,701	17,138 776	3,895 200
By Citizenship U. S. Citizens Non-Citizens	49,139 41,703	31,610 16,437	3,938 16,848	9,903 8,011	3,688 407

a/ Includes personnel not subject to Office of Management and Budget (OMB) ceiling control.

b/ See the Glossary for a list of the Other DoD Organizations.

c/ The Washington, D.C., Standard Metropolitan Statistical Area (SMSA) consists of the District of Columbia; Montgomery, Prince Georges, Charles, Calvert, and Frederick counties in Maryland; Alexandria, Fairfax, Falls Church, Manassas, and Manassas Park cities, and Arlington, Fairfax, Loudoun, Stafford, and Prince William counties in Virginia.

TABLE 7

DoD Indirect Hire Civilian Personnel, by Country
According to Defense Component: June 30, 1985

COUNTRY	TOTAL DoD	ARMY	NAVY	AIR FORCE	OTHER DoD ORGANIZATIONS a/
TOTAL	86,165	60,449	10,701	13,310	1,705
BELGIUM	655	606	0	49	0
COLOMBIA	1	0	0	0	1
GERMANY	60,220	52,729	0	6,090	1,401
GREECE	570	20	126	407	17
GUAM	0	0	0	0	0
ITALY	32	0	32	0	0
JAPAN	17,499	3,485	9,306	4,529	179
KOREA	3,271	3,271	0	0	0
NETHERLANDS	412	338	0	74	0
PHILIPPINES	7	0	6	0	1
SPAIN	2,091	0	1,166	838	87
UNITED KINGDOM	1,407	0	65	1,323	19

a/ See the Glossary for a list of Other DoD Organizations.

GLOSSARY

CIVILIAN FUNCTIONS. Functions primarily associated with the civil works program of the Army Corps of Engineers. This program encompasses planning, programming, designing, constructing, and operating Federal water resource projects for navigation, flood control, hydroelectric power, water supply, recreation, and related activities. Civil functions also includes cemeterial workers (Army) and several conservation management employees (Air Force).

COMPETITIVE SERVICE. All civil service positions in the Executive Branch, except:

1. Positions which are specifically exempted from the competitive service by or under statute;
2. Positions which appointments are made by nomination for confirmation by the Senate, unless the Senate otherwise directs or when specifically included in the competitive service by statute;
3. Positions in the Senior Executive Service.

Also includes civil service positions not in the Executive Branch which are specifically included in the competitive service by statute.

DIRECT HIRE CIVILIANS. Employees hired directly by an agency of the Department of Defense (DoD). Included are foreign nationals hired by DoD to support DoD activities in their home countries.

DoD. Department of Defense.

EXCEPTED SERVICE. All positions in the Executive Branch of the Federal government (except Senior Executive Service positions) which are specifically excepted from the competitive service by or pursuant to a statute, the President, or the Office of Personnel Management.

FULL-TIME EMPLOYEES. Employees who are regularly scheduled to work the number of hours and days in the administrative work week for their employment group or class. (Usually 5 days of 8 hours each).

INDIRECT HIRE CIVILIANS. Foreign nationals assigned to support U. S. forces through contracts or agreements with foreign governments (or agencies thereof). These personnel are employees of the foreign governments involved.

INTERMITTENT EMPLOYEES. Employees who are employed with no prescheduled tour of duty (i.e., employed on an irregular or occasional basis).

MILITARY FUNCTIONS. Activities normally associated with the uniformed services.

OMB CEILING EMPLOYMENT. Employees subject to the Office of Management and Budget (OMB) ceilings established to administer Presidential employment ceiling limitations. Refer to the Office of Personnel Management Federal Personnel Manual System Supplement 298-2, Subchapter 53, for a delineation of employment exempt from ceiling control.

OTHER DoD ORGANIZATIONS

*Office of the Secretary of Defense (OSD)

*Joint Chiefs of Staff (JCS)

*Inspector General of the Department of Defense

Department of Defense Agencies:

*Defense Advanced Research Projects Agency (DARPA)

Defense Audiovisual Agency (DAVA)

Defense Communications Agency (DCA)

Defense Contract Audit Agency (DCAA)

Defense Investigative Service (DIS)

- *Defense Legal Services Agency (DLSA)
- Defense Logistics Agency (DLA)
- Defense Mapping Agency (DMA)
- Defense Nuclear Agency (DNA)
- *Defense Security Assistance Agency (DSAA)
- *Strategic Defense Initiative Organization

Department of Defense Field Activities:

- *Armed Forces Information Service (AFIS)
- *Department of Defense Dependents Schools
(DODDS) (Headquarters Only)
- *Office of Civilian Health and Medical Program
Office (OCHAMPUS)
- *Office of Economic Adjustment (OEA)
- *Tri-Service Medical Information System Program
Office (TRIMIS)
- *Washington Headquarters Services (WHS)

*U. S. Court of Military Appeals

Uniformed Services University of the Health Sciences (USUHS)

PART-TIME EMPLOYEES. Employees who are regularly scheduled for a prearranged tour of duty which is less than the specified number of hours or days worked by full-time employees in the same employment group or class.

PERMANENT APPOINTMENTS. Permanent appointments are defined within each type of service as follows:

1. **COMPETITIVE SERVICE** - Employees serving under career appointments who are serving or who have completed their initial appointment probation or who are not required to serve an initial appointment probation. Also includes employees with career-conditional appointments.

2. **EXCEPTED SERVICE** - Employees whose appointments carry no restrictions or conditions, such as conditional appointments, indefinite or specific time limitations, or trial periods. Based on tenure, can include employees serving trial periods or those whose tenure is equivalent to career-conditional in the competitive service.

3. **SENIOR EXECUTIVE SERVICE (SES)** - All SES employees except those serving under "limited term" and "limited emergency" appointments.

SALARIED EMPLOYEES. Primarily employees occupying positions subject to the Classification Act of 1949, as amended, and a limited number of other employees whose compensation is established by other legislation, Executive Order, or administrative determination.

SENIOR EXECUTIVE SERVICE (SES). Positions in an agency which are grade 16, 17, or 18 of the General Schedule or Level IV or V of the Executive Schedule (unless exempted). Also includes equivalent positions which need not be filled by appointment by the President and confirmation by the Senate and which have not been specifically excluded from the SES.

TOTAL PAID CIVILIAN EMPLOYMENT. Total direct and indirect hire civilian employment. For direct hires, includes, with some exceptions, all direct hire employees who had not officially separated as of the report date and who either worked during the reporting period or were on paid leave.

WAGE SYSTEM EMPLOYEES. Employees whose basic rates of pay are fixed in accordance with locally prevailing rates or by wage boards or similar administrative authority. Includes prevailing rate employees. (Prevailing rate employees are those employed by an agency in a recognized trade or craft; other skilled mechanical craft; or an unskilled, semiskilled, or skilled manual labor occupation. Also includes any other person, including a foreman or supervisor, in a position where trade, craft, or labor experience and knowledge is a paramount requirement.)

NOTE: *Organizations serviced by OSD

EWAD

Dtjic

5-86