

AD-A156 822

PRIME CONTRACT AWARDS BY STATE, FIRST HALF, FY-85.
(U) WASHINGTON HEADQUARTERS SERVICE (DOD) D C DIR FOR
INFO OP & RPTS. 1985. DIOR/P09-85/01

1/1

UNCLASSIFIED

F/G 15/5

N/L

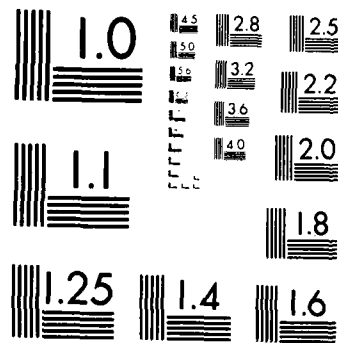
1 OF 1
ADA156 822



END
FILMED:
11 04 85

1 OF 1

AD-A156 822



MICROCOPY RESOLUTION TEST CHART
NATIONAL BUREAU OF STANDARDS 1963 A

**THIS REPORT IS UNCLASSIFIED AND
ITS DISTRIBUTION IS UNLIMITED**

Department of Defense
**PRIME CONTRACT AWARDS
BY STATE**

First Half Fiscal Year 1985



PRIME CONTRACT AWARDS BY STATE

First Half Fiscal Year 1985

Department of Defense
Washington Headquarters Services
Directorate for Information
Operations and Reports

FOREWORD

Prime Contract Awards by State is published semiannually.

This report provides information on Department of Defense procurement actions. Data are broken down into three categories:

- 1) Total U.S. Actions;
- 2) Actions Not Distributed by State; and
- 3) Total State Actions, which is further divided into separate totals for each state.

TABLE OF CONTENTS

Introduction.	1
Tables:	
Table 1. Net Value and Percent Distribution of DoD Procurement Actions, by State: First Half FY 1985, First Half FY 1984, and Second Quarters FY 1985 and FY 1984	3
Table 2. Net Value and Percent Distribution of DoD Military Procurement Actions, by State: First Half FY 1985, First Half FY 1984, and Second Quarters FY 1985 and FY 1984.	4
Table 3. Net Value and Percent Distribution of DoD Military Procurement Actions, by State, According to Defense Component: First Half FY 1985.	5

INTRODUCTION

Prime Contract Awards by State provides a wide variety of information on all Department of Defense (DoD) procurement actions. Both military and civil functions (i.e., Army Corps of Engineers--Civil Works) procurements are represented. The data are presented by state and include the net value of procurements awarded to each state as well as each state's percentage of the total for all state procurements.

The total net value of procurement actions for the first half of Fiscal Year (FY) 1985 and FY 1984 are shown for all of DoD in Table 1 and for its military components only in Table 2. These tables also provide, for comparison purposes, data for the second quarters of FY 1985 and FY 1984. The total net value of military procurement actions for the first half of FY 1985 (presented in Table 2) are displayed according to defense component in Table 3.

NOTES ON COVERAGE

Data in this report reflect the net value of debit and credit procurement actions over \$25,000, i.e., terminations, price changes, or other downward adjustments which are deducted from a contractor's total award amount, while modifications and other positive adjustments are treated as increases. Procurement actions include definitive contracts; the obligated portions of letter contracts; and job orders, task orders, delivery orders, or any other orders against existing contracts. Contracts for research and development, services, construction, and supplies and equipment are included. Contracts awarded by DoD to other Government agencies as intragovernmental orders and foreign military sales (reimbursable sales to foreign governments) are also included.

The data base from which information for this report is collected does not include data on those parts of indefinite quantity contracts (except for petroleum products) that have not been translated into specific orders to businesses, those contracts that have not yet become mutually binding agreements between the Government and the contractor, or prime contracts awarded by other U.S. government agencies and financed with DoD funds.

Location of Contracts

Contract work is not necessarily performed in the state where the contract is awarded. Most manufacturing contracts have been attributed to the contractor's location where the product will be processed and assembled. When contract work has been performed at more than one plant, the contract has been attributed to the location where the largest dollar amount of work was produced. Both construction and service contracts have been attributed to the state where the work is to be performed. Contracts for transportation and communications services have been attributed to the state where the contractor's home office is located. For purchases from wholesale or other distribution firms, the location is the contractor's business address.

Totals

The United States total in the tables includes all contracts awarded for work performed in the United States. The United States as used here includes the 50 states, the District of Columbia, U.S. possessions, the Commonwealth of Puerto Rico, the Trust Territories of the Pacific, and other areas subject to complete U.S. sovereignty.

The subtotal "Not Distributed by State" includes all contract actions of \$25,000 or less for performance in the United States. This subtotal also includes all contract

actions, regardless of size, for performance in the U.S. possessions, the Commonwealth of Puerto Rico, the Trust Territories of the Pacific, and other areas subject to complete U.S. sovereignty, and all contract actions for performance in classified locations.

State subtotals include the net value of procurement actions over \$25,000 awarded to each state and the District of Columbia.

Table 1. Net Value and Percent Distribution of DoD Procurement Actions, by State: First Half FY 1985, First Half FY 1984, and Second Quarters FY 1985 and FY 1984^{1,2}

(Amounts in Thousands)

STATE	FISCAL YEAR TO DATE				THREE MONTH PERIOD			
	1985 (OCT 84-MAR 85)		1984 (OCT 83-MAR 84)		FISCAL YEAR 1985 (JAN-MAR 1985)		FISCAL YEAR 1984 (JAN-MAR 1984)	
	AMOUNT	PERCENT	AMOUNT	PERCENT	AMOUNT	PERCENT	AMOUNT	PERCENT
TOTAL, U.S.	\$79,376,537		\$67,971,547		\$37,492,617		\$40,204,477	
NOT DISTRIBUTED BY STATE	5,897,788		4,905,774		3,194,121		3,345,662	
STATE TOTALS	73,478,749	100.0	63,065,773	100.0	34,298,496	100.0	36,858,815	100.0
Alabama	762,136	1.0	452,874	0.7	325,983	1.0	278,975	0.8
Alaska	271,099	0.4	243,599	0.4	94,178	0.3	95,648	0.3
Arizona	815,044	1.1	911,700	1.5	548,430	1.6	505,697	1.4
Arkansas	591,375	0.8	511,072	0.8	47,971	0.1	186,595	0.5
California	17,290,435	23.5	15,781,707	25.0	8,691,233	25.3	8,784,437	23.8
Colorado	727,375	1.0	436,865	0.7	328,064	1.0	290,045	0.8
Connecticut	2,570,084	3.5	2,467,020	3.9	1,345,460	3.9	920,771	2.5
Delaware	213,545	0.3	176,778	0.3	22,803	0.1	12,634	*
District of Columbia	736,479	1.0	584,453	0.9	330,463	1.0	340,020	0.9
Florida	2,621,198	3.6	1,917,120	3.0	1,168,217	3.4	1,286,179	3.5
Georgia	2,638,082	3.6	2,117,039	3.4	436,743	1.3	220,807	0.6
Hawaii	274,089	0.4	236,868	0.4	114,687	0.3	87,082	0.2
Idaho	23,341	*	22,017	*	9,291	*	9,270	*
Illinois	728,630	1.0	585,141	0.9	263,685	0.8	406,968	1.1
Indiana	1,333,475	1.8	839,309	1.3	702,603	2.1	513,856	1.4
Iowa	251,008	0.3	131,005	0.2	96,598	0.3	106,228	0.3
Kansas	1,264,104	1.7	1,221,982	1.9	421,213	1.2	566,447	1.5
Kentucky	270,706	0.4	273,025	0.4	59,313	0.2	72,686	0.2
Louisiana	1,075,200	1.5	1,350,940	2.1	246,569	0.7	424,310	1.2
Maine	477,889	0.7	320,851	0.5	55,054	0.2	299,286	0.8
Maryland	1,830,911	2.5	1,639,514	2.6	926,295	2.7	1,043,006	2.8
Massachusetts	4,696,184	6.4	3,812,449	6.1	2,695,334	7.9	2,960,489	8.0
Michigan	1,109,247	1.5	983,085	1.6	799,587	2.3	823,755	2.2
Minnesota	1,289,901	1.8	744,042	1.2	910,248	2.7	565,501	1.5
Mississippi	704,441	1.0	972,494	1.5	118,693	0.4	769,483	2.1
Missouri	2,638,188	3.6	3,539,265	5.6	1,141,833	3.3	3,135,976	8.5
Montana	66,880	0.1	32,408	0.1	32,757	0.1	29,119	0.1
Nebraska	70,123	0.1	71,812	0.1	20,251	0.1	40,584	0.1
Nevada	70,720	0.1	58,757	0.1	35,798	0.1	23,736	0.1
New Hampshire	341,679	0.5	262,124	0.4	137,184	0.4	217,921	0.6
New Jersey	1,511,392	2.1	1,454,458	2.3	964,551	2.8	903,329	2.5
New Mexico	223,638	0.3	249,858	0.4	107,812	0.3	106,462	0.3
New York	4,564,427	6.2	5,257,069	8.3	1,824,557	5.3	3,311,681	9.0
North Carolina	443,556	0.6	319,158	0.5	224,459	0.6	238,837	0.7
North Dakota	54,197	0.1	76,529	0.1	20,970	0.1	62,751	0.2
Ohio	2,657,071	3.6	1,013,786	1.6	1,635,748	3.0	656,235	1.8
Oklahoma	316,114	0.4	334,924	0.5	164,067	0.5	196,418	0.5
Oregon	91,912	0.1	117,279	0.2	37,814	0.1	74,830	0.2
Pennsylvania	2,270,951	3.1	1,563,617	2.5	1,033,816	2.9	1,002,755	2.7
Rhode Island	194,122	0.3	108,664	0.2	139,812	0.4	89,473	0.2
South Carolina	190,079	0.3	131,618	0.2	127,394	0.4	92,085	0.3
South Dakota	50,305	0.1	16,944	*	40,630	0.1	11,181	*
Tennessee	508,084	0.7	379,616	0.6	219,812	0.6	286,243	0.8
Texas	6,330,132	8.6	4,764,394	7.6	2,514,433	7.4	1,785,738	4.8
Utah	341,013	0.5	420,278	0.7	238,583	0.7	305,745	0.8
Vermont	48,070	0.1	55,474	0.1	41,133	0.1	51,234	0.1
Virginia	3,240,518	4.4	2,177,130	3.5	1,474,381	4.3	1,293,584	3.5
Washington	2,174,667	3.0	1,503,931	2.4	1,502,393	4.7	1,032,819	2.8
West Virginia	26,773	*	39,362	0.1	15,343	*	33,169	0.1
Wisconsin	425,247	0.6	341,829	0.5	300,368	0.9	265,597	0.7
Wyoming	62,923	0.1	42,540	0.1	9,490	*	39,036	0.1

¹ For clarification on the limitations and conditions of coverage, see the introduction.

² All figures include civil procurements procurement actions.

Note: An asterisk in the percent column represents a figure of less than 0.05 percent. Percentages may not add up due to rounding.

Table 2. Net Value and Percent Distribution of DoD Military Procurement Actions, by State: First Half FY 1985, First Half FY 1984, and Second Quarters FY 1985 and FY 1984¹

(Amounts in Thousands)

STATE	FISCAL YEAR TO DATE				THREE MONTH PERIOD			
	1985 (OCT 84-MAR 85)		1984 (OCT 83-MAR 84)		FISCAL YEAR 1985 (JAN-MAR 1985)		FISCAL YEAR 1984 (JAN-MAR 1984)	
	AMOUNT	PERCENT	AMOUNT	PERCENT	AMOUNT	PERCENT	AMOUNT	PERCENT
TOTAL, U.S.	\$78,541,538		\$67,190,992		\$37,081,722		\$39,702,960	
NOT DISTRIBUTED BY STATE	5,783,262		4,805,160		3,133,706		3,278,743	
STATE TOTALS	72,758,276	100.0	62,385,832	100.0	33,948,016	100.0	36,424,217	100.0
Alabama	737,468	1.0	441,263	0.7	310,757	0.9	268,333	0.7
Alaska	263,040	0.4	241,125	0.4	94,178	0.3	95,648	0.3
Arizona	812,448	1.1	908,405	1.5	547,010	1.6	505,004	1.4
Arkansas	579,046	0.8	494,501	0.8	45,862	0.1	177,816	0.5
California	17,274,056	23.7	15,765,196	25.3	8,681,907	25.6	8,779,080	24.1
Colorado	724,494	1.0	434,321	0.7	325,932	1.0	288,334	0.8
Connecticut	2,568,617	3.5	2,465,029	4.0	1,344,596	4.0	918,780	2.5
Delaware	212,698	0.3	176,750	0.3	21,956	0.1	12,606	*
District of Columbia	727,884	1.0	578,566	0.9	326,410	1.0	334,843	0.9
Florida	2,600,571	3.6	1,895,847	3.0	1,157,597	3.4	1,268,669	3.5
Georgia	2,604,543	3.6	2,100,437	3.4	407,060	1.2	205,439	0.6
Hawaii	266,339	0.4	228,372	0.4	111,240	0.3	78,586	0.2
Idaho	16,348	*	16,355	*	7,443	*	8,265	*
Illinois	681,174	0.9	537,819	0.9	256,247	0.8	389,483	1.1
Indiana	1,330,742	1.8	836,381	1.3	702,257	2.1	510,928	1.4
Iowa	245,733	0.3	119,629	0.2	94,938	0.3	95,028	0.3
Kansas	1,260,330	1.7	1,221,584	2.0	417,598	1.2	566,049	1.6
Kentucky	255,543	0.4	261,519	0.4	50,499	0.2	62,189	0.2
Louisiana	942,838	1.3	1,198,400	1.9	170,384	0.5	353,528	1.0
Maine	477,343	0.7	319,477	0.5	54,896	0.2	298,412	0.8
Maryland	1,819,482	2.5	1,632,884	2.6	922,933	2.7	1,039,417	2.9
Massachusetts	4,692,765	6.5	3,807,999	6.1	2,692,414	7.9	2,958,127	8.1
Michigan	1,100,662	1.5	978,408	1.6	798,239	2.4	820,355	2.3
Minnesota	1,279,175	1.8	733,621	1.2	901,781	2.7	558,693	1.5
Mississippi	669,260	0.9	903,332	1.5	108,521	0.3	710,195	2.0
Missouri	2,614,530	3.6	3,529,340	5.7	1,134,083	3.3	3,130,154	8.6
Montana	66,228	0.1	31,490	0.1	32,491	0.1	28,846	0.1
Nebraska	67,335	0.1	68,235	0.1	19,769	0.1	37,607	0.1
Nevada	70,693	0.1	58,730	0.1	35,771	0.1	23,709	0.1
New Hampshire	341,591	0.5	262,059	0.4	137,096	0.4	217,856	0.6
New Jersey	1,498,566	2.1	1,452,755	2.3	952,073	2.8	901,671	2.5
New Mexico	223,435	0.3	246,912	0.4	107,610	0.3	103,516	0.3
New York	4,551,968	6.3	5,254,610	8.4	1,820,947	5.4	3,309,300	9.1
North Carolina	420,571	0.6	309,950	0.5	266,940	0.8	237,130	0.7
North Dakota	53,392	0.1	75,966	0.1	30,324	0.1	62,534	0.2
Ohio	2,637,440	3.6	1,002,988	1.6	1,023,549	3.0	645,191	1.8
Oklahoma	306,625	0.4	329,005	0.5	154,718	0.5	193,916	0.5
Oregon	62,872	0.1	79,637	0.1	26,016	0.1	41,981	0.1
Pennsylvania	2,259,475	3.1	1,557,913	2.5	993,870	2.9	999,495	2.7
Rhode Island	194,122	0.3	108,572	0.2	139,812	0.4	89,381	0.3
South Carolina	172,111	0.2	118,150	0.2	116,840	0.3	88,586	0.2
South Dakota	48,755	0.1	14,778	*	39,355	0.1	9,777	*
Tennessee	490,974	0.7	370,244	0.6	215,157	0.6	282,089	0.8
Texas	6,270,445	8.6	4,689,644	7.5	2,501,107	7.4	1,740,375	4.8
Utah	340,321	0.5	420,156	0.7	238,323	0.7	305,745	0.8
Vermont	47,498	0.1	55,474	0.1	41,133	0.1	51,234	0.1
Virginia	3,232,715	4.4	2,170,783	3.5	1,467,412	4.3	1,288,541	3.5
Washington	2,141,333	2.9	1,463,982	2.4	1,586,436	4.7	999,662	2.7
West Virginia	16,718	*	35,453	0.1	5,531	*	29,446	0.1
Wisconsin	424,178	0.6	339,274	0.5	299,508	0.9	263,660	0.7
Wyoming	62,786	0.1	42,512	0.1	9,490	*	39,008	0.1

¹ For clarification on the limitations and conditions of coverage, see the introduction.
 Note: An asterisk in the percent column represents a figure of less than 0.05 percent. Percentages may not add up due to rounding.

Table 3. Net Value and Percent Distribution of DoD Military Procurement Actions, by State, According to Defense Component: First Half FY 1985¹

(Amounts in Thousands)

STATE	TOTAL ²		ARMY	NAVY	AIR FORCE	DEFENSE LOGISTICS AGENCY
	AMOUNT	PERCENT				
TOTAL, U.S.	\$78,541,538		\$15,712,880	\$24,944,817	\$27,740,148	\$8,651,741
NOT DISTRIBUTED BY STATE	5,783,262		1,499,852	1,126,077	1,394,127	1,640,157
STATE TOTALS	72,758,276	100.0	14,213,028	23,818,740	26,346,021	7,011,584
Alabama	737,468	1.0	327,485	147,849	156,956	99,423
Alaska	263,040	0.4	13,653	59,488	88,962	92,115
Arizona	812,448	1.1	276,485	227,692	253,669	12,314
Arkansas	578,046	0.8	307,431	218,078	23,367	29,170
California	17,274,056	23.7	2,569,870	5,615,774	7,784,852	1,046,173
Colorado	724,494	1.0	100,945	38,536	526,517	41,850
Connecticut	2,568,617	3.5	685,748	1,271,314	551,912	59,048
Delaware	212,698	0.3	7,140	2,329	21,936	181,293
District of Columbia	727,884	1.0	39,770	553,522	23,379	52,165
Florida	2,600,571	3.6	827,866	427,908	1,211,175	66,620
Georgia	2,604,543	3.6	279,684	182,860	2,072,006	67,990
Hawaii	266,339	0.4	47,447	62,359	30,908	122,784
Idaho	16,348	*	3,270	164	4,964	7,841
Illinois	681,174	0.9	173,258	90,340	243,956	169,001
Indiana	1,330,742	1.8	846,608	200,680	82,404	199,217
Iowa	245,733	0.3	87,598	21,567	15,788	120,780
Kansas	1,260,330	1.7	111,616	42,520	1,097,794	8,400
Kentucky	255,543	0.4	54,683	3,418	3,013	188,429
Louisiana	942,838	1.3	143,817	483,552	24,426	290,915
Maine	477,343	0.7	23,478	436,411	4,392	12,974
Maryland	1,819,482	2.5	216,854	733,891	556,215	82,689
Massachusetts	4,692,765	6.5	1,741,253	1,490,397	1,332,250	98,444
Michigan	1,100,662	1.5	826,347	82,467	109,505	79,419
Minnesota	1,279,175	1.8	443,943	665,797	132,152	23,178
Mississippi	669,260	0.9	18,832	384,924	23,460	241,557
Missouri	2,614,530	3.6	370,539	1,806,435	370,389	63,161
Montana	66,228	0.1	20,451	1,494	7,668	36,615
Nebraska	67,335	0.1	8,847	599	40,968	16,673
Nevada	70,693	0.1	15,960	4,086	44,643	2,709
New Hampshire	341,591	0.5	52,363	243,120	29,400	11,186
New Jersey	1,498,566	2.1	313,730	591,443	383,445	144,594
New Mexico	223,435	0.3	71,695	27,242	96,655	19,237
New York	4,551,968	6.3	209,425	2,894,894	1,072,867	244,195
North Carolina	420,571	0.6	117,829	161,423	42,240	88,272
North Dakota	53,392	0.1	21,182	2,162	15,180	14,779
Ohio	2,637,440	3.6	267,662	219,479	2,038,743	108,918
Oklahoma	306,625	0.4	100,856	6,877	124,541	74,136
Oregon	62,872	0.1	9,848	12,944	18,741	18,952
Pennsylvania	2,259,475	3.1	539,191	897,685	496,327	281,205
Rhode Island	194,122	0.3	23,493	116,960	1,668	42,619
South Carolina	172,111	0.2	59,020	63,047	20,649	24,303
South Dakota	48,755	0.1	38,577	168	5,754	4,256
Tennessee	490,974	0.7	213,702	16,555	200,355	60,177
Texas	6,270,445	8.6	689,454	714,717	2,783,157	2,067,505
Utah	340,321	0.5	32,150	19,271	252,044	28,789
Vermont	47,498	0.1	3,207	33,205	8,408	2,294
Virginia	3,232,715	4.4	448,219	2,214,259	223,240	90,135
Washington	2,141,333	2.9	187,969	254,218	1,627,141	51,553
West Virginia	16,718	*	1,340	1,608	1,218	11,441
Wisconsin	424,178	0.6	212,372	70,938	51,719	60,848
Wyoming	62,786	0.1	8,866	74	4,503	49,343

¹ For clarification on the limitations and conditions of coverage, see the introduction.

² Total includes all departments shown, plus other Defense agencies.

Note: An asterisk in the percent column represents a figure of less than 0.05 percent. Percentages may not add up due to rounding.

