

AD-A156 658

VALIDATION OF THE ALGORITHM FOR BASE OTHER SUPPORT
GENERAL COST FOR THE C. (U) INFORMATION SPECTRUM INC
ARLINGTON VA S J EINHORN 15 AUG 83 ISI-V-83-31859-05

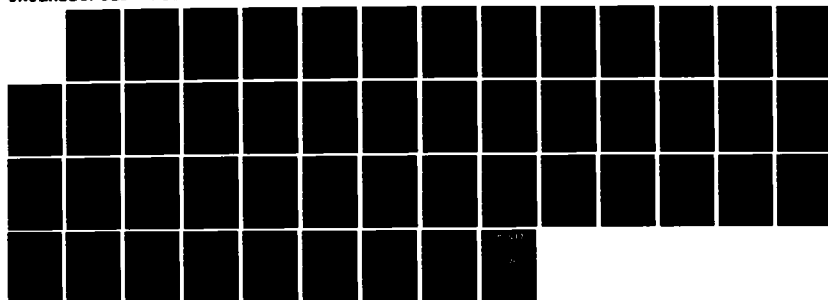
1/1

UNCLASSIFIED

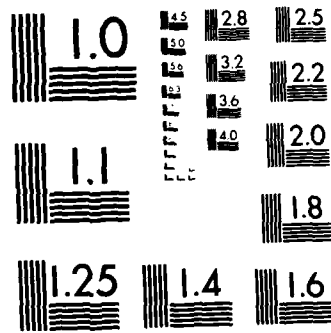
F33600-82-C-0543

F/G 14/1

NL







MICROCOPY RESOLUTION TEST CHART
NATIONAL BUREAU OF STANDARDS 1963-A

AD-A156 658

VALIDATION OF
THE ALGORITHM FOR
BASE OTHER SUPPORT GENERAL COST
FOR
THE COMPONENT SUPPORT COST SYSTEM
(D160B)

Contract No. F33600-82-C-0543

15 Aug 1983

Report Number
V-83-31859-05

DTIC
ELECTE
JUL 15 1985
B

DTIC FILE COPY

Submitted to:

HEADQUARTERS
AIR FORCE LOGISTICS COMMAND
MML (VAMOSC)
WRIGHT-PATTERSON AFB, OH 45433

Prepared by:

Sheldon J. Einhorn
Dr. Sheldon J. Einhorn

DISTRIBUTION STATEMENT A

Approved for public release
Distribution Unlimited

EXECUTIVE SUMMARY

Visibility and Management of Operating and Support Costs is a program initiated by the Office of the Secretary of Defense (OSD) in order to ensure that each Military Department gathers, tracks, and computes operating and support costs by weapon system.

VAMOSC II is an Air Force management information system which is responsive to the OSD initiative. It uses information from existing Air Force data systems to satisfy both Air Force and OSD needs for certain weapon system operating and support (O&S) costs.

At present, the VAMOSC II system comprises three subsystems:

- (1) The Weapon System Support Cost (WSSC) system (D160), which deals with aircraft,
- (2) The Communications - Electronics (C-E) system (D160A), which deals with ground communications - electronics equipment,
- (3) The Component Support Cost Subsystem (CSCS) (D160B), which deals with subsystems and components for aircraft.

The Component Support Cost System (CSCS) of VAMOSC II gathers and computes support costs by assembly/subassembly and relates those costs back to the end item or weapon system. CSCS replaces the Logistic Support Cost (LSC) model of K051 (AFLCR 400-49) for aircraft and engines.

The CSCS receives inputs from 15 Air Force data systems. On a quarterly basis, the system provides two standard reports each processing cycle and twelve other types of reports as requested

by users. It also provides pre-programmed data base extracts on magnetic tape on a one-time basis in response to user requests. Special requests for data in user selected format may also be satisfied on a case by case basis.

At the heart of the CSCS is a set of 30 algorithms for estimation or allocation of costs. Information Spectrum, Inc. (ISI) was awarded a contract to validate these algorithms. This effort included investigations of logic, appropriateness of the algorithms and assumptions inherent in the algorithms. ISI was also to survey published findings, reports of audit, etc. relating to the accuracy of the source data systems. In addition to the algorithm validation, ISI was to perform certain "special tasks," including a user survey.

This report provides the verification and validation of the algorithm called "Base Other Support General Costs". "Other Support General" denotes those Support General activities other than inspections (e.g. ground handling and servicing). The costs of Base Other Support General are the sum of direct labor costs and allocated portions of base maintenance overhead costs. These sums are provided separately for each combination of aircraft MDS and base. Base Other Support General costs are calculated exactly the same way as are Base Inspection Costs, which were reviewed in a previous ISI report.

In order to verify and validate the CSCS algorithms, a set of analysis procedures applicable to all of the algorithms was

established. These procedures were then applied to each algorithm. This report first describes the analysis procedures, without reference to the specific algorithm addressed by this report.

Next, the Base Other Support General Cost algorithm is defined and described in detail. This description includes identification of source data systems and files, and the calculation procedures currently implemented by the CSCS.

Finally, a critique of the algorithm is provided as required by the contract. It addresses the following topics:

- o Verification of assumptions and approximations for appropriateness and accuracy.
- o Validation of accuracy of source data.
- o Validation of appropriateness of source data as inputs to CSCS logic.
- o Investigation of accuracy and appropriateness of algorithms.
- o Consideration of replacement of indirect cost methods with more direct ones.

For each algorithm addressed, ISI is required to affirm the process or procedure and reject any portion that cannot be affirmed. Where the algorithm or portion of the algorithm is rejected, an alternate procedure must be specified. Because the calculation procedures are identical with procedures reviewed previously by ISI, the critique is generally extracted, and sometimes condensed from earlier reports.

The following defects in the Base Other Support General Cost algorithm are noted:

- (1) A military labor rate is multiplied by a sum of military and civilian labor hours.
- (2) Annual inflation factors are applied once at the beginning of the fiscal year.
- (3) Adjustment of labor rates on the basis of inflation factors becomes increasingly inaccurate as time elapses. No explicit provision is made of recognizing or correcting the inaccuracy.

In addition to these flaws, the report notes a problem in accuracy of input data systems. Published reports indicate that manhour data provided by the Maintenance Data Collection System is significantly deficient in both accuracy and timeliness. These deficiencies, if left uncorrected, would tend to negate the usefulness of the algorithm. However, the Air Force is currently testing a new system, the Automated Maintenance System, and a standard base level follow on system called the Core Automated Maintenance System (CAMS) which show considerable promise of correcting the deficiencies.

Three recommendations are provided for correcting the flaws in the algorithm. The first entails providing to the CSCS separate manhour data for civilian and military maintenance personnel. This would require changes in coding reports within the Maintenance Data Collection System, in processing these reports by the Product Performance System (D056), and in processing by the CSCS itself. In addition to providing more accurate labor costs, the recommendation would permit separate display of military and civilian base TCTO labor costs. The recommendation takes on added significance when it is recognized that it will apply to all base labor cost algorithms, not just to TCTO.

An alternative procedure is also offered. The alternative is less accurate and less useful, but simpler to implement. It entails development, through a survey, of composite labor rates for each MDS. The composite rates would reflect an actual mixture of civilian and military manpower.

A simple adjustment procedure is recommended for changing annual inflation rates to values applicable to the quarter. This procedure would be manually implemented.

Distribution For	
AMIS (MDS)	<input checked="" type="checkbox"/>
AMIS (MDS)	<input type="checkbox"/>
AMIS (MDS)	<input type="checkbox"/>
Distribution For	
AMIS (MDS)	
AMIS (MDS)	
Dist	Special
A-1	

TABLE OF CONTENTS

<u>Section</u>	<u>Page</u>
1.0 INTRODUCTION	1
1.1 The Component Support Cost System	1
1.2 Overview of the Algorithm	4
2.0 ANALYSIS PROCEDURES	7
2.1 Algorithm Description	7
2.2 Input Data Definitions	7
2.3 Concept Validation	8
2.4 Problem Resolution	10
2.5 Documentation	10
3.0 ALGORITHM ANALYSIS	11
3.1 Algorithm Description	11
3.1.1 Calculations	12
3.1.2 Inputs	12
3.1.3 Description of Calculation Procedure	13
3.2 Critique of Algorithm	13
3.2.1 Appropriateness and Accuracy of Assumptions and Approximations	13
3.2.2 Accuracy of Source Data and Congruence of Data Element Definitions	14
3.2.3 Appropriateness of Source Data as Inputs	17
3.2.4 Accuracy and Appropriateness of Algorithm	18
3.2.5 Directness of Costing	18
3.2.6 Application to CSCS Output Reports	19
4.0 RECOMMENDATIONS	21
4.1 Separate Civilian and Military Base Labor Costs.	22
4.1a Office of VAMOSC (OOV) Comments	22
4.2 Development of Average Labor Rates.....	23
4.2a Office of VAMOSC (OOV) Comments	23
4.3 Modified Inflation Factors.....	24
4.3a Office of VAMOSC (OOV) Comments.....	24
REFERENCES	25

LIST OF TABLES

<u>Number</u>		<u>Page</u>
1	CSCS OUTPUT REPORTS	3
2	CSCS ALGORITHM NAMES	5
3	CONTRIBUTION OF BASE OTHER SUPPORT GENERAL COST ALGORITHM TO CSCS OUTPUT REPORTS.....	20

LIST OF ATTACHMENTS

<u>Number</u>	<u>Title</u>	<u>Page</u>
1	Proposed DAR Entries Supporting Modification of Maintenance Data Collection System to Transmit Civilian and Military Manhours Separately to AFLC.....	A1-1
2	Proposed DAR Entries Supporting Modifications to Product Performance System to Process Civilian and Military Manhours Separately.....	A2-1
3	Proposed DAR Entries Supporting Modifications to CSCS to Process Military and Civilian Manhours Separately.....	A3-1
4	Derivation of Interpolations Formulas For Inflation Factors.....	A4-1

1.0 INTRODUCTION

Visibility and Management of Operating and Support Costs is a program initiated by the Office of the Secretary of Defense (OSD) in order to ensure that each Military Department gathers, tracks, and computes operating and support costs by weapon system (all costs are computed and portrayed in "then year" dollars). VAMOSC II is an Air Force management information system which is responsive to the OSD initiative. It uses information from existing Air Force systems to satisfy both Air Force and OSD needs for certain weapon system operating and support (O&S) costs.

At present, the VAMOSC II system comprises three subsystems:

- (1) The Weapon System Support Cost (WSSC) system (D160), which deals with aircraft,
- (2) The Communications - Electronics (C-E) system (D160A), which deals with ground communications - electronics equipment,
- (3) The Component Support Cost Subsystem (CSCS) (D160B), which deals with subsystems and components for aircraft.

1.1 The Component Support Cost System

The Component Support Cost System (CSCS) of VAMOSC II gathers and computes support costs by assembly/subassembly and relates those costs back to the end item or weapon system. CSCS replaces the Logistic Support Cost (LSC) model of K051 (AFLCR 400-49) for aircraft and engines.

The objectives of the Component Support Cost System are:

- (1) To improve the visibility of aircraft and engine component support costs and to relate those costs to the end item or weapon system.
- (2) To improve the Life Cycle Costing capability for the Air Force and the Department of Defense in the acquisition of new weapon systems.
- (3) To assist in the design of new weapon systems by providing cost information on existing weapon systems thereby enhancing design tradeoff studies.
- (4) To provide historical cost information at the weapon system level to improve logistic policy decisions.
- (5) To identify system component reliability, effectiveness, and costs so that high support cost items may be identified and addressed.

The CSCS is described in detail in references [1], [2], and [3]. It receives inputs from 15 Air Force data systems. On a quarterly basis, the system provides two mandatory reports each processing cycle and twelve other types of reports as requested by users. It also provides pre-programmed data base extracts on magnetic tape on a one-time basis in response to user requests. Special requests for data in user selected format may also be satisfied on a case by case basis.

The twelve reports mentioned above are of primary interest to the user community. They are identified by name in Table 1. Descriptions and samples are provided by reference [1].

TABLE 1. CSCS OUTPUT REPORTS

<u>Number*</u>	<u>Name</u>
8105	Cost Factors
8104	MDS Logistics Support Costs
8106	Base Work Unit Code (WUC) Costs
8107	Total Base Work Unit Code (WUC) Costs
8111	Depot On-Equipment Work Unit Code (WUC) Costs
8108	Total Base and Depot Work Unit Code (WUC) Costs
8109	NSN-MDS-WUC Cross-Reference
8110	MDS-WUC-NSN Cross-Reference
8112	Logistic Support Cost Ranking, Selected Items
8113	Summary of Cost Elements
8114	NSN-WUC Logistics Support Costs
8115	Assembly-Subassembly WUC Costs

* CSCS output reports are assigned Report Control symbol HAF-LEY(AR)nnnn, where nnnn is the number in the table.

At the heart of the CSCS is a set of 30 algorithms for estimation or allocation of costs. The algorithms are identified by name in Table 2. Information Spectrum, Inc. (ISI) was awarded a contract to validate these algorithms. This effort included investigations of logic, appropriateness of the algorithms and assumptions inherent in the algorithms. ISI was also to survey published findings, reports of audit, etc. relating to the accuracy of the source data systems. In addition to the algorithm validation, ISI was to perform certain "special tasks," including a user survey.

1.2 Overview of the Algorithm

This report provides the verification and validation of algorithm 6 of Table 2, "Base Other Support General Costs." Certain maintenance activities, such as ground handling, servicing, and inspection, are not associated with an aircraft subsystem or component. Such activities are called Support General. A major portion of Support General costs are associated with aircraft inspections. The CSCS treatment of Base Inspection Costs was addressed in reference [53]. All other Support General costs are lumped together by the CSCS in the algorithm addressed by this report. The algorithm calculates the combined costs of direct labor for Other Support General and the associated overhead costs. These costs are developed separately for each combination of aircraft MDS and base.

TABLE 2. CSCS ALGORITHM NAMES

1. Base TCTO Labor Cost
2. Base TCTO Overhead Cost
3. Base TCTO Material Cost
4. TCTO Transportation Costs
5. Base Inspection Costs
6. Base Other Support General Costs
7. Base Labor Costs
8. Base Direct Material Costs
9. Base Maintenance Overhead Costs
10. Second Destination Transportation Costs
11. Second Destination Transportation Costs (En
12. Base Exchangeable Repair Costs (NSN)
13. Base Exchangeable Repair Costs (Engine)
14. Base Exchangeable Modification Costs (NSN)
15. Base Condemnation Spares Costs/NSN
16. Base Exchangeable Modification Costs (Engin
17. Base Supply Management Overhead Costs
18. Depot TCTO Labor Costs
19. Depot TCTO Material Costs
20. Depot TCTO Other Costs
21. Depot Support General Costs
22. Depot Labor Costs
23. Depot Direct Material Costs
24. Depot Other Costs
25. Depot Exchangeable Repair Costs (NSN)
26. Depot Exchangeable Repair Costs (Engine)
27. Depot Exchangeable Modification Costs (NSN)
28. Depot Exchangeable Modification Costs (Engi
29. Depot Condemnation Spares Costs (NSN)
30. Depot Material Management Overhead Cost

The algorithm uses methods which have previously been reported on. In particular, the methodology is basically identical to the one which was represented for Base Inspection Costs In reference [53].

2.0 ANALYSIS PROCEDURES

In order to verify and validate the CSCS algorithms, a set of analysis procedures applicable to all of the algorithms was established. These procedures were then applied to each algorithm. This section describes the analysis procedures, without reference to the specific algorithm addressed by this report.

The algorithm analysis process consists of five portions, described in the following sections.

2.1 Algorithm Description

The algorithms are described in references [1], [2], and [3]. These descriptions are not identical. In general they supplement, rather than contradict each other. The first two describe what the system is to achieve; the third describes the system design to do so.

None of these descriptions provides the combination of level of detail and clarity of concept required for this validation effort. The first step in the analysis methodology was the generation of such a description. The descriptions in the three reference sources just cited were made explicit. When necessary, Air Force personnel involved in implementation of the D160B subsystem were contacted for clarification.

2.2 Input Data Definitions

Closely related to the first step was the clarification of the definitions of the input data. The identification of each

input data element and of the system providing it was provided by the User's Manual (reference [1]). This identification was refined by identification of a particular file within the source system and the structure of the file as described in both the CSCS System/Subsystem Specification and in the Memoranda of Agreement. The Memoranda of Agreement have been established between the Office of VAMOSC and the Offices of Primary Responsibility (OPR) for the systems providing the input data. Any inconsistencies or voids were identified and resolved through contact with the Office of VAMOSC and/or implementing personnel.

Whenever appropriate, input data element definitions were further refined by tracing the elements back to their sources through the reference data provided. If these were inadequate, the OPRs were contacted directly for clarifications. In tracing the data back to their origins, possible sources of data contamination were considered. Information on the likelihood and significance of such contamination was collected from cognizant personnel and from published references.

2.3 Concept Validation

The two steps above established exactly what the algorithm does. The third, and most critical step, considered the validity of the procedure. It depended on the ability of the analyst to translate mathematical formulas and data processing techniques into meaningful concepts.

Some explicit techniques which were generally used in concept validation are listed below.

- (a) Consider how the cost element would be calculated if there were no constraints on resources. (For example, suppose the CSCS could identify the pay grade and hours worked of each individual involved in a maintenance action.)
- (b) Identify assumptions* incorporated into the Algorithm. Generally this procedure will identify the real constraints which affect the approach in (a) above.
- (c) Identify approximations incorporated into the algorithm. For instance, one such approximation is the use of an average labor rate for each aircraft.
- (d) Study each approximation for possible sources of error. Some examples are biases introduced by editing procedures, obsolete data, or inappropriate application. Whenever feasible, estimate the likelihood of these errors by reviews of the literature and contact with cognizant personnel.
- (e) Test the algorithms under conditions of assumed extreme values for the inputs. For instance, in evaluating the algorithm for base maintenance overhead costs, assume that for a single reporting period all maintenance labor is overhead and none is direct. Also try the reverse assumption. If an assumption of an extreme input leads to an illogical result, the algorithm is flawed.

General Task (4) of Section C-2 of the contract speaks of appropriate statistical techniques to confirm or repudiate each algorithm. Statistical techniques could confirm or repudiate only statistical hypotheses as assumptions. (Use of an average does not constitute an assumption.) Accordingly, statistical techniques apply to confirmation or repudiation of an algorithm only to the extent that statistical hypotheses can be developed.

- (f) As each algorithm is considered, ensure that the costs do not overlap others already accounted for. (In some cases an overlap may be necessary and desirable. where this occurs, the overlap will be noted.)

* Note that assumptions, approximations, and allocations are different concepts, although in some cases the boundaries between them are not sharp. ISI has recognized few assumptions in the algorithms, but many approximations and allocations.

- (g) In each CSCS output report, identify the data elements incorporating the output of the algorithm, so that a final assessment of report accuracy can be made for each output report.
- (h) Consider alternative sources of input data for the algorithm. Also consider more direct cost assignments than those incorporated in the algorithm.

2.4 Problem Resolution

Whenever a significant deficiency was recognized in one of the algorithms, one or more proposed solutions were developed. This was a creative analytic process for which few guidelines could be proposed in advance. Certainly it depended on familiarity with the various existing Air Force data reporting and processing systems. Proposed solutions were discussed with personnel of the Office of VAMOSC, and revised as appropriate. Recommended solutions were expressed in the form of contributions to a draft Data Automation Requirement (DAR) when these would be applicable.

2.5 Documentation

The documentation of the analysis of each algorithm was a crucial part of the effort. Emphasis was placed on making it thorough, clear, and unambiguous. In the documentation, every assertion was substantiated. This was done by reference to source documentation, by explicitly expressed application of the experience and judgment of the contractor, or by citation of information provided by cognizant Air Force personnel. In the last case, the information was supported by documentation identifying the source, the date, and the information provided.

3.0 ALGORITHM ANALYSIS

The previous section described the general analysis procedures applied to all algorithms. This section presents the results of applying those procedures to the algorithm for Base Other Support General Costs.

Section 3.1 provides a detailed description of the algorithm and of the input data it uses. Section 3.2 provides a critique, structured to correspond to the contractual requirements. Section 4.0 makes recommendations for solutions of problems.

3.1 Algorithm Description

In the following description COBOL-type data names are used to express the algorithm output and its components. The available source documentation does not provide the actual data names used by the CSCS programs. They are presumably different from those used in this report.

This description provides a formula for the calculation that is derived from the Users Manual and other sources. It is not the same as the formula provided in the Users Manual. It is intended to be more explicit. The formula is stated in Section 3.1.1. The input data elements and their sources are provided in Section 3.1.2. The calculation is described verbally in Section 3.1.3. Unless otherwise noted, the descriptions are based on references [1], [2], and [3], and on direct discussion with personnel of the Office of VAMOSC. In case of any discrepancies, information provided by knowledgeable personnel was accepted as most current, hence most definitive.

3.1.1 Calculations

$$\text{MDS-BASE-OTH-SUP-GEN-COST} = \text{MDS-BASE-OTH-SUP-GEN-MH} \\ \times (\text{DLR-MDS} + \text{BASE-MAINT-OVHD-COST-RATE})$$

3.1.2 Inputs

Name: MDS-BASE-OTH-SUP-GEN-MH

Definition: Support General manhours, excluding Inspection, reported for the MDS, base, and calendar quarter.

Source System/File: D056A/MNI75A0

Name: DLR-MDS

Definition: Average direct military labor rate for maintenance for the MDS

Source System/File: Reference [7] provides average direct labor rates for FY 80 for each MDS. The military rates are inflated by the CSCS by multiplying by the inflation index for military manpower cost in year X (referenced to FY 80), published annually in AFR 173-13, where X is the fiscal year in which the quarter of interest falls. According to reference [1], rates will be re-calculated on an as required basis. No procedure has been established for determining when or how to recalculate the rates.

Name: BASE-MAINT-OVHD-COST-RATE

Definition: The average quarterly cost of maintenance overhead associated with one hour of direct maintenance labor for the base.

Source: The Base Maintenance Overhead Cost Rate is calculated once each quarter for each base by the CSCS, and used in several algorithms. The calculation was described in reference [27].

3.1.3 Description of Calculation Procedure

D056A File MNI70KO is received monthly. Records include SRD, base code, and "Support General - Other" manhours. The program recognizes engine SRDs, and identifies the engine inspection manhours to the associated aircraft MDS. For each MDS-base combination, the program adds other support general manhours (WUC 01,02,05,06,07,08,09) reported directly for the MDS to other support general manhours reported for the engine. This MDS per base manhour total is multiplied by the sum of the Direct Labor Rate for the MDS and the Base Maintenance Overhead Cost Rate. The result is identified as the Base Other Support General Cost for the MDS, base, and calendar quarter.

3.2 Critique of Algorithm

This section addresses various facets of the algorithm. The discussion is structured to correspond to the contractual requirements. Each aspect is either affirmed or rejected. Rejections lead to recommendations in Section 4.0.

As noted in Section 1.2, this algorithm uses exactly the same methodology as was used for Base Inspection Costs in reference [53]. The affirmations and rejections which were developed in that reference are repeated here, but the details are omitted where they would be too repetitious. For those details reference [53] should be consulted.

3.2.1 Appropriateness and Accuracy of Assumptions and Approximations

Information Spectrum has identified two assumptions or approximations (either term is appropriate) implicit in the

algorithm. The first is that average labor rates for Other Support General in 1980 were the same as the average for all maintenance in 1980. The second is that the rate of inflation for Other Support General labor is the same as the rate applicable to military manpower cost in general.

Addressing the first assumption, reference [22], Chapter 2, Section C gives policy and procedures for the inspection function at squadron level. References to personnel skills, on-the-job training, and proficiency goals suggest that skill levels span the range found in maintenance in general. This argument, admittedly very indirect, suggests that Other Support General labor rates should lie near the average for an aircraft. The worldwide average labor rate per MDS is therefore appropriate. ISI can see no feasible approach to a more direct verification.

The second question is whether inflation factors for Other Support General labor rates might differ significantly from those for all military personnel. ISI analysts have tracked various inflation indices for many years. Our experience indicates that differences between indices for similar quantities are invariably negligible for periods of many years.

Accordingly, ISI affirms the appropriateness and accuracy of assumptions and approximations incorporated in this algorithm.

3.2.2 Accuracy of Source Data and Congruence of Data Element Definitions

Information Spectrum was directed to validate accuracy of source data based on a survey of published findings, reports of

audit, etc. on source data systems. No direct sampling of data was to be performed. The Office of VAMOSC has indicated that direct validation of source data is planned for future efforts. The source data consists of manhours provided by the Product Performance System (D056), labor rates for FY 80 provided on a one-time basis, inflation factors published annually by the Air Force and base maintenance overhead cost rates generated within the CSCS. For the first three items, the accuracy of the source data and the congruence of the data element definitions as used in the CSCS with the definitions in the source systems were discussed at length in previous reports, especially in Section 3.2.2 of reference [17]. The conclusions are summarized here. The discussion of the Base Maintenance Overhead Cost Rate is summarized from reference [27].

On the basis of published reports, ISI concludes that manhours data provided by the D056 system is at present generally subject to significant deviations from that which actually occurs, with direct adverse impact on the output of the algorithm. However, the Air Force is currently testing a system, called the Automated Maintenance System, which holds promise of overcoming this problem. We find no lack of congruence between the definitions of inspection manhours as used by Base Other Support General Costs algorithm and as provided by the input data system.

The algorithm is based on military labor rates established for 1980. The accuracy and repeatability of these labor rates will be addressed in subsequent reports. The algorithm applies the labor rates to manhours which are the sum of military and civilian maintenance manhours. The rate applied, however, is the military labor rate. The civilian rates are not used. This lack of congruence distorts the algorithm results.

We affirm the accuracy of the inflation factors used by the CSCS. However, as discussed in Section 3.2.2.4 of reference [17], the use of the same annual inflation factor in each quarter of a fiscal year represents a lack of congruence between the definitions of this factor as used by the CSCS and as defined by the input data system. The lack of congruence may introduce distortions in the results which ISI considers unacceptable.

The Base Maintenance Overhead Cost Rate, although treated as an input to this algorithm, is developed within the CSCS itself. It was reviewed in detail in reference [27]. That review affirmed the actual programmed procedure for developing the Base Maintenance Overhead Cost Rate. The procedure as described in the Users Manual and Functional Description is flawed, and re-writes of appropriate sections of those documents are required.

The definition of the Base Maintenance Overhead Cost Rate was also discussed in reference [27] and is applicable to all types of base maintenance. Therefore, its use in the algorithm for Base

Other Support General Costs is congruent with the definition provided by the input data system, which is the CSCS itself.

3.2.3 Appropriateness of Source Data as Inputs

The algorithm uses manhours data, Direct Labor Rates, and the Base Maintenance Overhead Cost Rate. These are addressed separately in the following subsections.

3.2.3.1 Manhours Data

The need for manhours data as inputs to this algorithm is self-evident. The D056 data accurately reflects the data logged by maintenance personnel. No other source of manhours data exists. Accordingly, ISI affirms the use of the D056 data as a source of manhours. It must be recognized, however, that improvement in source data accuracy is highly desirable, as discussed in Section 3.2.2.

3.2.3.2. Labor Rate

The appropriateness of the average worldwide labor rates by MDS as adjusted by inflation is adequate at present, but these values will deteriorate as time goes by. The labor rates represent a mix of pay grades valid in 1980. This mix will lose validity as the Air Force manpower mix changes with time. The assertion of reference [1] that the labor rates will be recalculated "on an as required basis" is not sufficient assurance that it will actually occur. Initial investigation indicates that the direct labor rates by MDS provided by reference [16] cannot be

recalculated with ease. Accordingly, ISI finds this input inappropriate until further investigation in the review of other algorithms establishes the appropriateness of the rate.

3.2.3.3 Base Maintenance Overhead Cost Rate

Since the CSCS itself is the source of this rate, it is ipso facto an appropriate data source.

3.2.4 Accuracy and Appropriateness of the Algorithm

This algorithm calculates Base Other Support General Costs as the sum of two components. One is the Base Other Support General direct labor costs, calculated exactly as in reference [17]. As in that reference, ISI affirms the accuracy and appropriateness of this part of the algorithm, subject to the criticisms in Sections 3.2.2 and 3.2.3.

The second component is the Base Other Support General Overhead costs, calculated exactly as in reference [53] using the base overhead cost rate and the Base Other Support General manhours. As in that reference, ISI affirms the accuracy and appropriateness of this part of the algorithm.

3.2.5 Directness of Costing

This algorithm, provides a direct costing methodology and a more direct costing methodology is neither possible nor necessary.

3.2.6 Application to CSCS Output Reports

Base Other Support General Costs and the element included in the algorithm are components of five CSC described by Table 3. The accuracy and limitations the algorithm and its elements by this report impact put report elements. The total accuracy of each out cannot be addressed until all algorithms impacting t its respective cost elements have been reviewed. Th in the final report of this effort.

Evaluation of the usefulness of the report will vided in the final report of this effort and after I survey of users.

TABLE 3

CONTRIBUTION OF BASE OTHER SUPPORT
GENERAL ALGORITHM TO CSCS OUTPUT REPORTS

<u>OUTPUT REPORT/NUMBER (1)</u>	<u>COST ELEMENTS CONTRIBUTED TO BY THE ALGORITHM(2)</u>
1. MDS Logistics Support Costs/8104	1. By MDS for all bases: a. SUPPORT GENERAL COSTS, BASE (1) OTHER COSTS (2) OTHER HOURS b. TOTAL MDS COSTS
2. Base Work Unit Code (WUC) Costs/8106	2. BY MDS and base: TOTAL BASE COSTS, SUPPORT GENERAL
3. Total Base Work Unit Code (WUC) Costs/8107	3. By MDS for all bases: TOTAL COSTS, SUPPORT GENERAL
4. Total Base and Depot Work Unit Code (WUC) Costs/8108	4. By MDS for all bases: TOTAL COSTS, SUPPORT GENERAL
5. Summary of Cost Elements/8113	5. By MDS for all bases: UNIT MISSION PERSONNEL (MAINTENANCE), ORGANIZATIONAL COSTS, BASE SUPP GEN

(1) CSCS output reports are assigned Report Control Symbol HAF-LEY
(AR) nnnn, where nnnn is the number in the table.

(2) Capital letters indicate the titles printed on the report.

4.0 RECOMMENDATIONS

Section 3 has presented ISI's judgement that the algorithm for Base Other Support General costs is fundamentally sound, but shares the flaws identified in reference [17]. These flaws are summarized as follows:

- (1) A military labor rate is multiplied by a sum of military and civilian labor hours.
- (2) Annual inflation factors are applied once at the beginning of the fiscal year.
- (2) Adjustment of labor rates on the basis of inflation factors alone becomes increasingly inaccurate as time elapses. No explicit provision is made for recognizing or correcting the inaccuracy.

Information Spectrum has developed two alternative recommendations in response to item (1). The first recommendation provides for separation of military and civilian base labor costs. It is discussed in Section 4.1. An alternative, which we consider less satisfactory, is discussed in Section 4.2. Section 4.3 addresses item (2) and recommends a simple improvement to the procedure for inflation adjustments. Item (3) is addressed in Section 4.4, which proposes a new approach to the determination of labor rates.

In the Air Force Logistics Command, changes to automated data systems are initiated through preparation of AFLC Form 238, Data

Automation Requirements," (DAR). This form contains a number of administrative entries, together with three items of substantive content: "Requirements," "Impact Statement," and "Justification Benefits/Cost Savings." For each proposed data system change, ISI has provided a draft of these sections.

4.1 Separate Civilian and Military Base Labor Costs

It is recommended that base labor costs be calculated and displayed separately for civilian and military labor. This would entail four separate changes. First the Maintenance Data Collection System should be changed to forward manhours to AFLC separately for military and civilian labor. This change could be implemented as described the the DAR entries of Attachment 1. Next, the Product Performance System (D056) which receives the data should be changed to accept the new format. This change is described in Attachment 2.

The MOA and data input formats from D056 to the CSCS must be modified to include military and civilian maintenance manhours. The CSCS would then be modified to accept and process the data. These changes are described in Attachment 3.

4.1a Office of VAMOSC (OOV) Comments

Concur. We sampled Weapon System Support Cost (WSSC) data and found that only 2-3 percent of the total base maintenance squadron work force are civilians. Therefore, there is some question as to the utility of costing military and civilian labor separately. In addition, we do not expect the necessary changes

to the MDCS will be possible until FY86 when the Phase IV data system is implemented. In the meantime, we will further review the utility of capturing, from MDCS, military and civilian available hours for computing DLRs. At least until the review is complete, we will compute DLRs for each MDS using the MCS IA report. Each DLR will be a composite military and civilian rate, weighted based on the reported number of military and civilian hours.

4.2 Development of Average Labor Rates

The recommendations of Section 4.1 entail modifications to systems and procedures of long standing. Their implementation may prove unfeasible or unacceptable. An alternative recommendation is that the military labor rates currently being used by the CSCS be replaced for each MDS by a composite military and civilian labor rate and be applied to the composite manhours that are obtained by current procedures. This rate would be developed by identifying total civilian and military maintenance manhours for each MDS over a period of time (The most current four quarters is recommended.) Then for each MDS the appropriate composite labor rate would be the result of weighting the civilian and military rates of reference [7] by these manhours.

This change would require no programming changes hence no programming DAR would be required.

4.2a Office of VAMOSC (OOV) Comments

Concur.

4.3 Modified Inflation Factors

Inflation factors published in reference [15] apply to the middle of the fiscal year. In order to apply these to a fiscal quarter, a simple linear interpolation is recommended. Explicitly, let $F(X)$ be the published inflation factor for fiscal year X , referred to FY 80. Then

In the first quarter use $[5 F(X) + 3F(X-1)]/8$.

In the second quarter use $[7 F(X) + F(X-1)]/8$.

In the third quarter use $[7 F(X) + F(X+1)]/8$.

In the fourth quarter use $[5 F(X) + 3F(X+1)]/8$.

These formulas are derived in Attachment 4.

For example, reference [15] lists an inflation factor of 1.318 for FY 82 and 1.418 for FY 83 for total military compensation. Accordingly, an appropriate factor for the second quarter of FY 83 would be $(7 \times 1.418 + 1 \times 1.318)/8 = 1.4055$.

Since the impact of inflation is entered into the CSCS manually, no DAR is required.

4.3a Office of VAMOSC (OOV) Comments

Concur. Please include a detailed explanation of how modified inflation factors are computed. (See Attachment 4.)

REFERENCES

- [1] AF Regulation 400-31, Volume IV (6 August 1982),
Visibility and Management of Operating and Support Cost
Program (VAMOSC) Component Support Cost System (CSCS)
- [2] FD-K-14010C, Functional Description (for the Component
Support Cost System (CSCS), Data System Designator D160B,
undated draft)
- [3] SS-K-15010B, Component Support Cost System/Subsystem
Specification, 1 June 1983
- [4] TO-00-20-2, Technical Manual: The Maintenance Data
Collection System, 1 November 1981
- [5] TO-00-20-2-45-2, Operational Supplement to Technical Order:
Maintenance Documentation for In-Shop Engine Maintenance,
1 October 1982
- [6] Memoranda of Agreement (listed separately)
- [7] Letter from Chief, Material, Cost & International Accounting
Systems Division, Directorate of Plans & System, HQ USAF,
dated 27 Feb 1981, Subject: Direct Labor Rates
- [8] Air Force Magazine, May 1983 (Almanac Issue)
- [9] AFLC Pamphlet 173-10, AFLC Cost and Planning Factors,
31 December 1981
- [10] "A Statistical Evaluation of the Accuracy of Maintenance
Direct Labor Data Used in Support of Operating and Support
Costs." Desmatics, Inc. Final Report No. 111-1, by
Dennis E. Smith, Robert L. Gardner, and Terry L. King, April 1979
- [11] "The Air Force Can Improve Its Maintenance Information
System," U.S. General Accounting Office Report No. GAO/GGD-83-20,
25 January 1983
- [12] Compendium of Authenticated Systems and Logistics Terms,
Definitions and Acronyms, School of Systems and Logistics,
Air Force Institute of Technology, 1 April 1981
- [13] AF Regulation 177-101, General Accounting and Finance
Systems at Base Level, 17 March 1980 updated to 1 June 1982
- [14] AF Manual 177-380, USAF Standard Base Level Maintenance
Cost System (B3500), 19 October 1976 updated to 31 July 1981
- [15] AF Regulation 173-13, USAF Cost and Planning Factors,
1 February 1982

- [16] HQ USAF/ACF (AFAFC) Denver, Co ltr (undated), Subject: Direct Labor Rates for VAMOSC (your 21 Apr 83 ltr)
- [17] "Validation of the Algorithm for Base TCTO Labor Cost for the Component Support System (D160B)," Information Spectrum, Inc., Report No. V-83-31859-01, 15 August 1983
- [18] AF Regulation 300-4, Vol. III, Unclassified Data Elements and Codes, 1 May 1982
- [19] AF Manual 177-674, USAF Standard Base Level Accounting and Distribution System (AFDS): H069R/XQ (H6000), 1 April 1980, updated to 18 June 1982
- [20] AF Manual 177-370, USAF Standard Base-Level Accounting and Finance System (B3500), 1 December 1979
- [21] TO-00-20-2-2, Technical Manual: On-Equipment Maintenance Documentation for Aircraft; Air-Launched Missiles; Ground-Launched Missiles; Except ICBMS; Drones; and Related Training Equipment, 1 August 1976, updated to 15 October 1982
- [22] TO-00-20-2-10, Technical Manual: Off-Equipment Maintenance Documentation for Shopwork, Conventional Munitions, and Precision Measuring Equipment, 1 January 1978, updated to 1 August 1982
- [23] AF Manual 66-267, Maintenance Data Collection System (MDC), DSDC: G001BD, Users Manual, 1 October 1979, updated to 1 January 1983
- [24] Letter from Chief, Material Systems Division, Directorate of Comptroller Systems, Air Force Data Systems Design Center, to HQ AFLC/MM(VAMOSC), dated 15 September 1983, Subject: "D002A, Daily Consumable Material Cost Data Interface with D160B, Component Support Cost System (CSCS) (your ltr, 15 Aug 83)."
- [25] AF Manual 67-1, USAF Supply Manual, Vol. II, Part I, Base Procedures, updated to 18 April 1983
- [26] AFLC Regulation 72-2, Cataloging and Standardization, 3 March 1980, updated to 29 May 1982
- [27] "Validation of the Algorithm for Base TCTO Overhead Costs for the Component Support Cost System (D160B)," Information Spectrum, Inc., Report No. V-83-31859-02, 15 August 1983
- [28] "Validation of the Algorithm for Base Labor Costs for the Component Support Cost System (D160B)," Information Spectrum, Inc., Report No. V-83-31859-06, 13 December 1983

- [29] DoD Handbook 7220.29-H, Department of Defense Depot Maintenance and Maintenance Support Cost Accounting and Production Handbook, updated through 13 September 1979
- [30] AF Manual 400-1, Volume II, Comprehensive Engine Management System (D042) Engine Status, Configuration and TCTO Reporting Procedures, 1 October 1983
- [31] "Validation of the Algorithms for Base Exchangeable Repair Costs (Engine) and Base Exchangeable Modification Costs (Engine) for the Component Support Cost System (D160B)," Information Spectrum, Inc., Report No. V-84-31859-10, 11 February 1984
- [32] TO-00-5-15, Technical Manual: Air Force Time Compliance Technical Order System, 15 April 1983
- [33] "Validation of the Algorithm for Depot TCTO Labor Costs for the Component Support Cost System (D160B)," Information Spectrum, Inc., Report No. V-84-31859-12, 12 April 1984
- [34] "Validation of the Algorithm for Depot TCTO Material Costs for the Component Support Cost System (D160B)," Information Spectrum, Inc., Report No. V-84-31859-13, 12 April 1984
- [35] "Validation of the Algorithm for Depot TCTO Other Costs for the Component Support Cost System (D160B)," Information Spectrum, Inc., Report No. V-84-31859-14, 12 April 1984
- [36] AFLC Regulation 170-10, "Depot Maintenance Service Air Force Industrial Fund (DMS, AFIF) Financial Procedures, 28 June 1979, updated to 16 February 1982
- [37] "Validation of the Algorithms for Base Exchangeable Repair Costs (NSN) and Base Exchangeable Modification Costs (NSN) for the Component Support Cost System (D160B)," Information Spectrum, Inc., Report No. V-84-31859-09, 11 February 1984
- [38] AF Manual 67-1, "USAF Supply Manual," Vol. II (Ph IV) Part II, 1 February 1984
- [39] "Validation of the Algorithm for Base Maintenance Overhead Costs for the Component Support Cost System (D160B)," Information Spectrum, Inc., Report No. V-83-31859-08, 13 December 1983
- [40] "Aircraft Operating and Support Cost Development Guide," Office of the Secretary of Defense, Cost Analysis Improvement Group, 15 April 1980
- [41] DoD 7220.29H, "DoD Depot Maintenance and Maintenance Support Cost Accounting and Production Reporting Handbook," updated through 28 October 1981

- [42] VAMOSC Operating Instruction 7, Component Support System (CSCS), Mission Support of the CSCS (D160B), 9 April 1982
- [43] VAMOSC OI7, 28 December 1983
- [44] AFLC Regulation 75-1, Shipment Processing and Documentation, 15 October 1975, updated to 21 December 1977
- [45] AFM 400-1, Volume I, Selective Management of Propulsion Units, Policy and Guidance, 21 June 1976
- [46] Aircraft Operating and Support Cost Development Guide, Office of the Secretary of Defense, Cost Analysis Improvement Group, 15 April 1980
- [47] Letter from ACM to ALMAJCOM-SOA/ACM/ACC/ACR, Subject: Commercial/Industrial Type Activities (CITA) Factor Development Procedures (RCS: HAF-ACM(AR)8004) (AF/MPMX Msg, 251445Z Jul 80), signed by Donald G. Kane, Colonel, USAF, Director of Cost and Management Analysis
- [48] AFLC Regulation 65-12, Management of Items Subject to Repair (MISTR). 2 August 1978
- [49] AFLC Regulation 66-61, Operational Planning, 27 October 1983
- [50] "Validation of the Algorithms for Depot Support General, Labor, Direct Material, and Other Costs for the Component Support Cost System (D160B)," Information Spectrum, Inc., Report No. V-84-31859-15, 12 April 1984
- [51] AF Manual 177-206, Automated Material System Interfaced with Supply System at Base Level, Users Manual, 1 August 1979, updated to 1 February 1983.
- [52] AF Regulation 66-1, Maintenance Management, Volume 3, Squadron Maintenance, 2 January 1980
- [53] "Validation of the Algorithm for Base Inspection Costs for the Component Support Cost System (D160B)," Information Spectrum, Inc., Report No. V-83-31859-04, 15 August 1983

MEMORANDA OF AGREEMENT
FOR SYSTEM INTERFACES

<u>Ref. No.</u>	<u>Memorandum No.</u>	<u>Date</u>
[6.1]	D002A/M024B/D160B-A	9 Jun 1980
[6.2]	D002A/M024B/D160B-B	9 Jun 1980
[6.3]	D024A/D160B-A	30 Jun 1980
[6.4]	D033./ARC/D160B	14 Jun 1980
[6.5]	D042A/DNB/D160B	4 Nov 1983
[6.6]	D046/M024/D160B	9 Apr 1981
[6.7]	D046/D160B	23 Jun 1982
[6.8]	D056A/BDN/D160B-A	23 Jan 1981
[6.9]	D056A/D160B-C	13 Oct 1981
[6.10]	D056A/D160B-D	29 Jan 1981
[6.11]	D056A F005	25 Apr 1979
[6.12]	D056B/BDN/D160B-A	22 Dec 1980
[6.13]	D056C/D160B-A	4 Mar 1981
[6.14]	D071/D160B	17 Jun 1982
[6.15]	D143B/D002A 9159	3 Aug 1979
[6.16]	D143F/ARC/D160B-A	5 Feb 1981
[6.17]	D160/D160B	11 Jun 1982
[6.18]	G004L/M024B/D160B-A	30 May 1980
[6.19]	G004L/M024B/D160B-B	30 May 1980
[6.20]	G004L/M024B/D160B-C	5 Nov 1981
[6.21]	G019F/D160B	8 Sep 1982
[6.22]	G033B/D160B	12 Jul 1982
[6.23]	G072D/BDN/D160B-A	19 Apr 1982

MEMORANDA OF AGREEMENT
FOR SYSTEM INTERFACES (Continued)

<u>Ref. No.</u>	<u>Memorandum No.</u>	<u>Date</u>
[6.24]	H036B/RC/D160B-A	10 Feb 1981
[6.25]	H069R/M024B/D160B-B	19 Jan 1981
[6.26]	O013/BDN/D160B	22 Jul 1982

Attachment 1: Proposed DAR Entries Supporting Modification of Maintenance Data Collection System to Transmit Civilian and Military Manhours Separately to AFLC.

Requirement

Currently, base level files of the Maintenance Data Collection System include a field called "category of labor," which distinguishes military from civilian manhours. Records transmitted to the Product Performance System at AFLC do not distinguish military from civilian manhours.

The current format of transmitted records involves 80 columns, all of which are used. However, a change in coding would permit distinguishing military and civilian manhours.

Column 80 of transmitted records is called "Record Code." Table A-1 identifies all values currently used. Of these records, only A, E, F, G, H, and S provide manhours. These codes should be reserved for military manhours, and additional codes (e.g. B, C, D, H, J, K, and U) used for civilian manhours in corresponding cases.

Request that record transmittal formats be changed to permit distinguishing military from civilian manhours.

Impact Statement

Failure to implement makes it impossible for the product Performance System to provide military and civilian manhours separately to the CSCS. The CSCS in turn will remain unable to distinguish military and civilian labor costs.

TABLE A-1 RECORD CODES TRANSMITTED TO
PRODUCT PERFORMANCE SYSTEM

<u>Code</u>	<u>Application</u>
A	On-equipment aircraft, missile and JETD C-E maintenance
E,F	On-equipment engine maintenance
G	On-equipment non-airborne maintenance
H	Off-equipment maintenance
L	Lead-the-force report
P	Parts replaced during repair
R	Removal of serialized components
S	Summarized aircraft support general
T	Removal/installation of aircraft engine

Justification Benefits/Cost Savings

Critically required to permit the CSCS to accurately labor costs and to maintain the congruence of the algorithm output with the input data.

Attachment 2: Proposed DAR Entries Supporting Modifications to Product Performance System to Process Civilian and Military Manhours Separately.

Requirement

Currently, the Product Performance System receives from the Maintenance Data Collection System reports on maintenance manhours which do not distinguish between civilian and military labor. A separate DAR, provided with this report as Attachment 1, proposes a data format incorporating this distinction.

Request that the Product Performance System be modified to accept inputs coded as described in Attachment 1. These reports would be forwarded to the CSCS in the new format.

Impact Statement

Failure to implement makes it impossible for the Product Performance System to provide military and civilian manhours separately to the CSCS. The CSCS in turn will remain unable to distinguish military and civilian labor costs.

Justification Benefits/Cost Savings

Critically required to permit the CSCS to accurately portray labor costs and to distinguish military from civilian costs, thus contributing to management decisions on economical maintenance.

Attachment 3: Proposed DAR Entries Supporting Modifications to CSCS to Process Military and Civilian Manhours Separately.

Requirement

Currently, the CSCS receives from the Product Performance System reports on maintenance manhours which do not distinguish between civilian and military labor. A separate DAR, provided with this report as Attachment 1, proposed a data format incorporating this distinction. A second DAR proposes that the Product Performance System forward to the CSCS the reports in the proposed modified format.

Request that the CSCS be modified to accept the reports in this format, and apply military and civilian pay rates to the respective manhours.

Impact Statement

If not implemented, CSCS users will continue to get reports of TCTO labor costs that this analysis considers inaccurate.

Justification Benefits/Cost Savings

Critically required to permit the CSCS to accurately portray TCTO labor costs.

Attachment 4: Derivation of Interpolation Formulas for Inflation Factors

Inflation factors published in AFR 173-13 are annual values. Experience shows that these factors are most accurate at mid-year. For CSCS purposes, we need factors applicable to mid-quarter.

Figure A-1 illustrates the linear interpolation procedures. The published inflation factors at the mid-points of fiscal years X-1, X, and X+1 are indicated by F(X-1), F(X), and F(X+1). The desired inflation factors at the mid-points of the quarters of fiscal year X are designated a, b, c, and d.

From the time of applicability of the value F(X-1) to the times of applicability of values a, b, and F(X), respectively, the elapsed times are $7\frac{1}{2}$, $10\frac{1}{2}$ and 12 months. Clearly, then,

$$\begin{aligned} a &= F(X-1) + \frac{7\frac{1}{2}}{12} [F(X) - F(X-1)] \\ &= F(X-1) + \frac{15}{24} [F(X) - F(X-1)] \\ &= F(X-1) + \frac{5}{8} [F(X) - F(X-1)] \\ &= \frac{5 F(X) + 3 F(X-1)}{8}. \end{aligned}$$

Similarly,

$$\begin{aligned} b &= F(X-1) + \frac{10\frac{1}{2}}{12} [F(X) - F(X-1)] \\ &= \frac{7 F(X) + F(X-1)}{8}. \end{aligned}$$

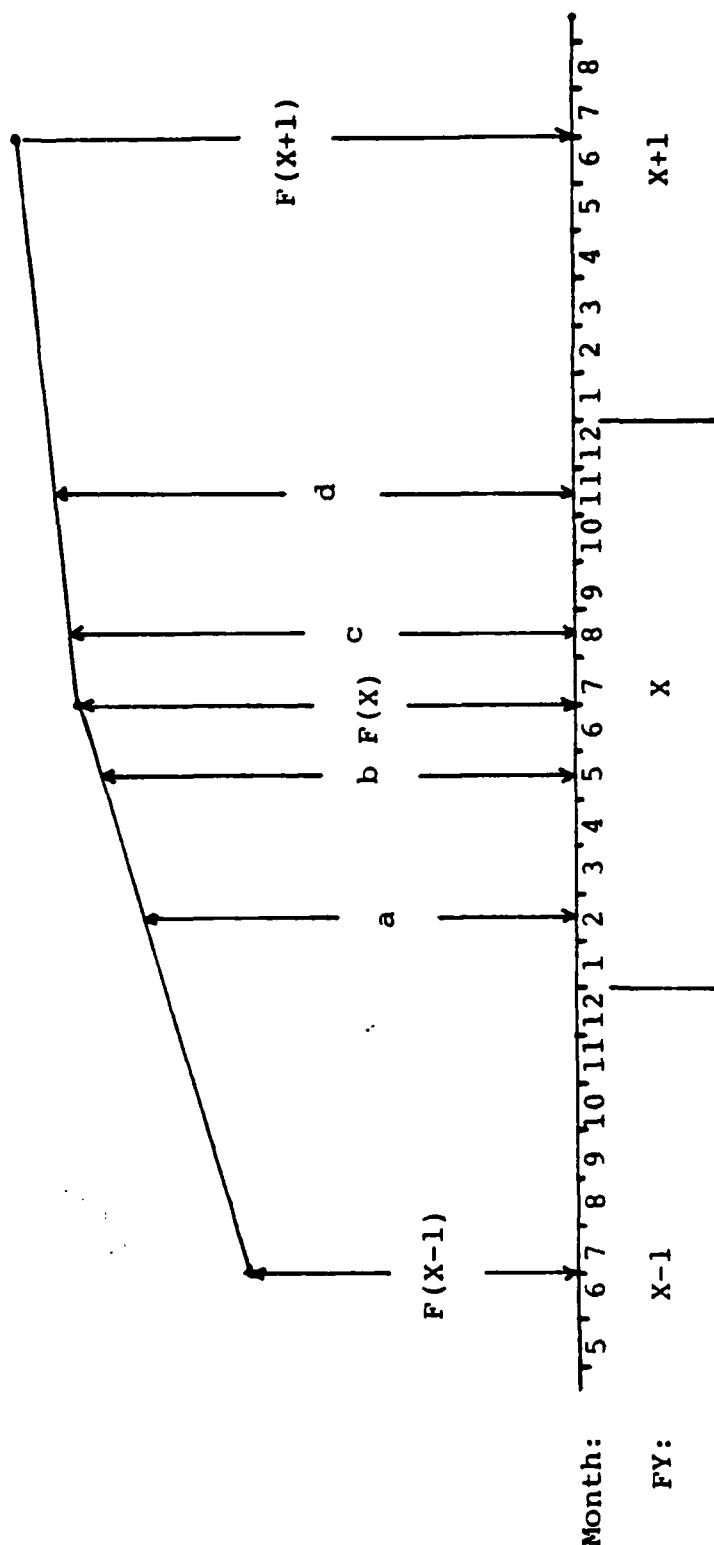


Figure A-1. Linear Interpolation for Inflation Factors

$$c = F(X) + \frac{11\frac{1}{2}}{12} [F(X+1) - F(X)]$$

$$= \frac{7 F(X) + F(X+1)}{8}.$$

$$d + F(X) + \frac{4\frac{1}{2}}{12} [F(X+1) - F(X)]$$

$$= \frac{5 F(X) + 3 F(X+1)}{8}.$$

REPORT DOCUMENTATION PAGE		READ INSTRUCTIONS BEFORE COMPLETING FORM	
1. REPORT NUMBER	2. GOVT ACCESSION NO.	3. RECIPIENT'S CATALOG NUMBER	
AD-A156658			
4. TITLE (and Subtitle) Validation of the Algorithm for Base Other Support General Cost for THE CSCS (D160B)		5. TYPE OF REPORT & PERIOD COVERED Technical Report	
		6. PERFORMING ORG. REPORT NUMBER V-83-31859-05	
7. AUTHOR(s) Dr. Sheldon J. Einhorn		8. CONTRACT OR GRANT NUMBER(s) F33600-82-C-0543	
9. PERFORMING ORGANIZATION NAME AND ADDRESS Information Spectrum, Inc 1745 S. Jefferson Davis Highway Arlington, VA 22202		10. PROGRAM ELEMENT, PROJECT, TASK AREA & WORK UNIT NUMBERS	
11. CONTROLLING OFFICE NAME AND ADDRESS HQ AFLC/MML (VAMOSC) Wright-Patterson AFB, OH 45433		12. REPORT DATE August 1983	
		13. NUMBER OF PAGES 48	
14. MONITORING AGENCY NAME & ADDRESS (if different from Controlling Office)		15. SECURITY CLASS. (of this report) Unclassified	
		15a. DECLASSIFICATION/DOWNGRADING SCHEDULE	
16. DISTRIBUTION STATEMENT (of this Report) Approved for public release; distribution unlimited.			
17. DISTRIBUTION STATEMENT (of the abstract entered in Block 20, if different from Report)			
18. SUPPLEMENTARY NOTES			
19. KEY WORDS (Continue on reverse side if necessary and identify by block number) VAMOSC O&S Costs Cost Allocation			
20. ABSTRACT (Continue on reverse side if necessary and identify by block number) This is the fifth of a set of reports documenting the findings of a study conducted by Information Spectrum, Inc (ISI) for the Office of VAMOSC, Air Force Logistics Command. This study constitutes an assessment of the algorithm for Base Other Support General Cost within the Component Support Cost System (CSCS) subsystem of VAMOSC, the Air Force Visibility and Management of Operating and Support Cost system. CSCS deals with subsystems and components for aircraft.			

20. This report provides the verification and validation of the algorithm called "Base Other Support General Costs". "Other Support General" denotes those Support General activities other than inspections (e.g. ground handling and servicing). The costs of Base Other Support General are the sum of direct labor costs and allocated portions of base maintenance overhead costs. These sums are provided separately for each combination of aircraft MDS base. Base Other Support General costs are calculated exactly the same way as are Base Inspection Costs, which were reviewed in the fourth ISI report.

This volume presents ISIs conclusions and recommendations, and the comments of the Office of VAMOSC.

END

FILMED

8-85

DTIC

