

AD-A151 348

PRIME CONTRACT AWARDS BY STATE, FY-81. (U) WASHINGTON
HEADQUARTERS SERVICE (DOD) D C DIR FOR INFO OP & RPTS.
1981. DIOR/P09-81

1/1

UNCLASSIFIED

F/G 15/5

N/L

1 OF 1
ADA151 348

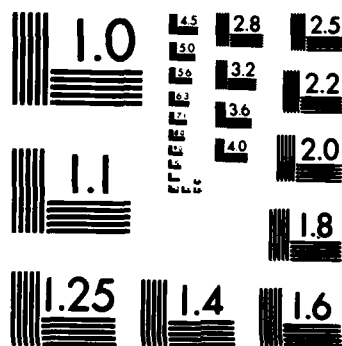


END

FILMED
11 04 85

1 OF 1

AD-A151 348

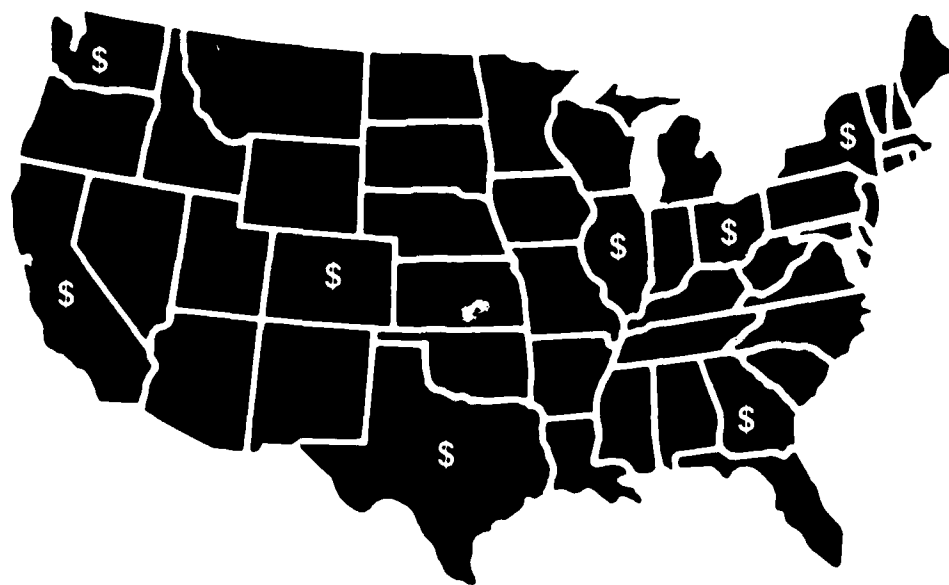


**THIS REPORT IS UNCLASSIFIED AND
ITS DISTRIBUTION IS UNLIMITED**



Department of Defense
**PRIME CONTRACT AWARDS
BY STATE**

Fiscal Year 1981



Department of Defense

**PRIME CONTRACT AWARDS
BY STATE**

Fiscal Year 1981

**Issued Semiannually By
Department of Defense
Washington Headquarters Services
Directorate for Information
Operations and Reports
December 1981**

FOREWORD

Prime Contract Awards by State is published semiannually by the Office of the Secretary of Defense, Washington Headquarters Services, Directorate for Information Operations and Reports (WHS/DIOR).

This report provides information on Department of Defense procurement actions which is broken down into three categories:

- 1) Total U.S. Actions;
- 2) Actions Not Distributed by State; and
- 3) Total State Actions, which is further broken down into separate totals for each individual state.

Requests for additional information should be addressed to the Director, Washington Headquarters Services, Room 3E843, The Pentagon, Washington, D.C. 20301.

TABLE OF CONTENTS

Introduction	1
--------------------	---

Tables:

Table 1. Net Value and Percent Distribution of Department of Defense (DOD) Procurement Actions, by State: FY 1980 and FY 1981 and Fourth Quarters, FY 1980 and FY 1981	3
Table 2. Net Value and Percent Distribution of DOD Military Procurement Actions, by State: FY 1980 and FY 1981 and Fourth Quarters, FY 1980 and FY 1981	4
Table 3. Net Value and Percent Distribution of DOD Military Procurement Actions, by State, According to Department: FY 1981	5
Table 4. Net Value and Percent Distribution of DOD Military Procurement Actions, by State: FY 1979, FY 1980, and FY 1981	6
Table 5. Net Value of DOD Civil Functions Procurement Actions, by State: FY 1978, FY 1979, FY 1980, and FY 1981	7

INTRODUCTION

Prime Contract Awards by State provides a wide variety of information on all Department of Defense (DOD) procurement actions. Both military and civil functions (e.g., Army Corps of Engineers — Civil Works) procurements are represented. The data are presented by state and include the net value of procurements awarded to each state as well as each state's percentage of the total for all state procurements (except for Table 5).

The total net value of procurement actions for Fiscal Year (FY) 1980 and FY 1981 for all of DOD and for its military components only are shown in Tables 1 and 2, respectively. These tables also provide, for comparison purposes, data for the fourth quarter of FY 1980 and FY 1981. The total net value of military procurement actions for FY 1981 presented in Table 2 are displayed by military department in Table 3. Table 4 displays the total net value of military procurement actions for FY 1979 through FY 1981. Data on the total net value of civil functions procurement actions for FY 1978 through FY 1981 are provided in Table 5.

NOTES ON COVERAGE

The data provided in this report reflect the following limitations and conditions:

Types of Contracts

This report provides data on prime contracts only and cannot be used to reflect the substantial amount of material and component fabrication and subcontract work that may be done outside the state where final assembly or delivery take place.

Prime Contract Awards by State also includes data on definitive contracts, funded portions of letter contracts and letters of intent, job orders, and purchase orders to industrial firms. Interdepartmental purchases made from or through other governmental agencies, such as those purchases made through the General Services Administration, are also included. The state data include upward and downward revisions and adjustments over \$10,000, such as cancellations, price changes, supplemental agreements, amendments, and other changes.

Except for the data pertaining to petroleum products, this report does not include data on indefinite delivery, open-end, or call-type contracts. However, specific purchases or delivery orders over \$10,000 placed against these contracts are included. Project orders, such as production orders to government owned-and-operated facilities like Navy yards, are also excluded, but contracts placed with industry by government-operated facilities to complete production orders are included.

Location of Contracts

This publication does not provide the user with a direct indication of where contract work is performed. For the majority of manufacturing contracts, data reflect the plant location where the product will be processed and assembled. In many instances, a prime contractor will have work done at more than one plant; in these cases, the value of the contract has been attributed to the state where the plant is located that will produce the largest dollar amount of work. Construction contracts have been attributed to the state where construction is to be performed. For purchases from wholesale or other distribution firms, the location is the contractor's business address. The location for service contracts is generally the state where the service will be performed. In the case of transportation and communications services contracts, the home address is normally used.

Totals

The United States total in the tables includes all contracts awarded for work performed in the United States. The United States as used here includes the 50 states, the District of Columbia, U.S. possessions, the Canal Zone, the Commonwealth of Puerto Rico, the Trust Territories of the Pacific, and other areas subject to complete U.S. sovereignty.

The subtotal "Not Distributed by State" includes all contract actions of \$10,000 or less for performance in the United States. This subtotal also includes all contract actions, regardless of size, for performance in the U.S. possessions, the Commonwealth of Puerto Rico, the Trust Territories of the Pacific, and other areas subject to complete U.S. sovereignty, and all contract actions for performance in classified locations.

State subtotals include the net value of procurement actions over \$10,000 awarded to each state and the District of Columbia.

**Table 1. Net Value and Percent Distribution of Department of Defense (DOD)
Procurement Actions, By State: FY 1980 and FY 1981 and Fourth Quarters,
FY 1980 and FY 1981^{1 2}**

(Amounts in Thousands)

STATE	FISCAL YEAR 1980 (OCT 79-SEP 80)		FISCAL YEAR 1981 (OCT 80-SEP 81)		FOURTH QUARTER FISCAL YEAR 1980 (OCT 79-SEP 80)		FOURTH QUARTER FISCAL YEAR 1981 (OCT 80-SEP 81)	
	AMOUNT	PERCENT	AMOUNT	PERCENT	AMOUNT	PERCENT	AMOUNT	PERCENT
TOTAL, U.S.	\$78,374,867	=====	\$98,710,003	=====	\$24,239,518	=====	\$33,243,935	=====
NOT DISTRIBUTED BY STATE	10,305,318		10,948,788		3,564,862		3,853,247	
STATE TOTALS	68,069,549	100.0	87,761,215	100.0	20,674,656	100.0	29,390,688	100.0
ALABAMA	746,415	1.1	847,752	1.0	219,262	1.1	255,579	0.9
ALASKA	257,355	0.4	349,423	0.4	69,588	0.3	59,717	0.2
ARIZONA	729,656	1.1	1,141,807	1.3	212,693	1.0	484,932	1.7
ARKANSAS	172,384	0.3	218,485	0.3	49,449	0.2	56,107	0.2
CALIFORNIA	13,914,429	20.4	16,698,825	19.0	3,771,494	18.2	5,282,156	18.0
COLORADO	518,300	0.8	938,074	1.1	174,385	0.8	195,430	0.7
CONNECTICUT	3,879,061	5.7	4,494,258	5.1	1,883,771	9.1	2,036,196	6.9
DELAWARE	243,828	0.4	237,837	0.3	101,276	0.5	19,804	0.1
DISTRICT OF COLUMBIA	602,348	0.9	626,594	0.7	134,096	0.7	181,345	0.6
FLORIDA	2,053,198	3.0	3,169,443	3.6	444,278	2.2	762,639	2.6
GEORGIA	960,992	1.4	1,334,188	1.5	368,977	1.8	334,041	1.1
HAWAII	315,410	0.5	590,746	0.7	65,304	0.3	222,433	0.8
IDAH0	28,115	*	40,770	0.1	8,284	*	12,858	*
ILLINOIS	1,006,783	1.5	1,216,715	1.4	275,251	1.3	468,404	1.6
INDIANA	1,297,786	1.9	1,717,644	2.0	331,301	1.6	599,380	2.0
IOWA	303,102	0.5	333,217	0.4	105,852	0.5	122,547	0.4
KANSAS	806,245	1.2	983,087	1.1	164,143	0.8	243,026	0.8
KENTUCKY	277,519	0.4	407,226	0.5	75,619	0.4	87,801	0.3
LOUISIANA	694,643	1.0	3,045,133	3.5	143,013	0.7	1,264,947	4.3
MAINE	459,418	0.7	476,407	0.5	93,583	0.5	317,345	1.1
MARYLAND	1,795,400	2.6	2,390,671	2.7	539,420	2.6	770,890	2.6
MASSACHUSETTS	3,743,171	5.5	4,604,946	5.3	893,339	4.3	1,724,729	5.9
MICHIGAN	1,701,749	2.5	1,777,296	2.0	509,145	2.5	687,612	2.3
MINNESOTA	1,070,273	1.6	1,188,463	1.4	386,025	1.9	395,032	1.3
MISSISSIPPI	808,291	1.2	1,442,704	1.6	225,749	1.1	764,579	2.6
MISSOURI	3,264,063	4.8	4,411,471	5.0	1,192,555	5.8	1,437,156	4.9
MONTANA	35,241	0.1	43,466	0.1	6,770	*	11,243	*
NEBRASKA	103,631	0.2	109,664	0.1	29,120	0.1	23,462	0.1
NEVADA	50,390	0.1	78,381	0.1	17,713	0.1	23,712	0.1
NEW HAMPSHIRE	306,481	0.5	393,075	0.5	154,973	0.8	176,379	0.6
NEW JERSEY	1,532,102	2.3	2,313,258	2.6	608,027	2.9	797,945	2.7
NEW MEXICO	294,877	0.4	385,770	0.4	58,738	0.3	75,640	0.3
NEW YORK	5,678,789	8.3	6,520,511	7.4	1,524,801	7.4	1,987,733	6.8
NORTH CAROLINA	676,759	1.0	860,018	1.0	276,732	1.3	325,841	1.1
NORTH DAKOTA	73,150	0.1	106,938	0.1	16,424	0.1	39,457	0.1
OHIO	1,633,335	2.4	2,471,545	2.8	472,156	2.3	662,542	2.3
OKLAHOMA	466,880	0.7	656,978	0.8	97,516	0.5	147,634	0.5
OREGON	196,182	0.3	171,328	0.2	58,891	0.3	56,501	0.2
PENNSYLVANIA	2,215,927	3.3	2,405,647	2.7	638,647	3.1	613,194	2.1
RHODE ISLAND	261,792	0.4	235,959	0.3	120,147	0.6	127,943	0.4
SOUTH CAROLINA	331,444	0.5	481,974	0.6	136,313	0.7	218,588	0.7
SOUTH DAKOTA	20,971	*	56,583	0.1	6,829	*	8,331	*
TENNESSEE	533,406	0.8	521,071	0.6	195,465	1.0	174,885	0.6
TEXAS	5,413,352	8.0	7,503,964	8.6	990,606	4.8	2,021,333	6.9
UTAH	251,355	0.4	404,457	0.5	65,131	0.3	94,531	0.3
VERMONT	125,138	0.2	167,603	0.2	18,319	0.1	40,764	0.1
VIRGINIA	3,366,849	5.0	3,611,821	4.1	1,774,717	8.6	1,982,811	6.8
WASHINGTON	2,316,807	3.4	2,792,891	3.2	811,433	3.9	734,163	2.5
WEST VIRGINIA	123,897	0.2	114,440	0.1	28,001	0.1	20,806	0.1
WISCONSIN	377,585	0.6	608,661	0.7	127,298	0.6	231,920	0.8
WYOMING	33,295	0.1	64,030	0.1	2,037	*	6,645	*

¹ For clarification on the limitations and conditions of coverage, see the Introduction.

² All figures include Civil Functions Procurement Actions. See Table 5.

Note: An "*" in the percent column represents a figure of less than 0.05 percent. Percentages may not add up due to rounding.

Table 2. Net Value and Percent Distribution of DOD Military Procurement Actions,
By State: FY 1980 and FY 1981 and Fourth Quarters, FY 1980 and FY 1981¹

(Amounts in Thousands)

STATE	FISCAL YEAR 1980 (OCT 79-SEP 80)		FISCAL YEAR 1981 (OCT 80-SEP 81)		FOURTH QUARTER FISCAL YEAR 1980 (OCT 79-SEP 80)		FOURTH QUARTER FISCAL YEAR 1981 (OCT 80-SEP 81)	
	AMOUNT	PERCENT	AMOUNT	PERCENT	AMOUNT	PERCENT	AMOUNT	PERCENT
TOTAL, U.S.	\$76,430,383	*****	\$96,653,244	*****	\$23,394,589	*****	\$32,617,472	*****
NOT DISTRIBUTED BY STATE	10,136,538		10,773,245		3,511,288		3,789,933	
STATE TOTALS	66,293,845	100.0	85,879,999	100.0	19,883,301	100.0	28,827,539	100.0
ALABAMA	625,864	0.9	790,589	0.9	172,859	0.9	245,380	0.9
ALASKA	250,899	0.4	323,440	0.4	67,695	0.3	57,420	0.2
ARIZONA	727,193	1.1	1,123,332	1.3	210,469	1.1	382,661	1.3
ARKANSAS	122,159	0.2	153,913	0.2	36,066	0.2	41,658	0.1
CALIFORNIA	13,852,612	20.9	16,629,796	19.4	3,732,335	18.8	5,305,421	18.4
COLORADO	509,859	0.8	935,294	1.1	173,579	0.9	195,113	0.7
CONNECTICUT	3,867,188	5.8	4,492,205	5.2	1,876,866	9.4	2,035,184	7.1
DELAWARE	239,628	0.4	236,270	0.3	97,192	0.5	19,337	0.1
DISTRICT OF COLUMBIA	590,257	0.9	594,698	0.7	132,317	0.7	153,262	0.5
FLORIDA	1,984,335	3.0	3,094,358	3.6	415,952	2.1	734,885	2.6
GEORGIA	883,694	1.3	1,245,072	1.5	303,332	1.5	321,523	1.1
HAWAII	315,251	0.5	590,671	0.7	65,304	0.3	222,410	0.8
IDAHO	19,456	*	28,030	*	7,361	*	7,132	*
ILLINOIS	944,812	1.4	1,155,091	1.4	253,958	1.3	457,435	1.6
INDIANA	1,289,812	2.0	1,713,292	2.0	329,956	1.7	596,877	2.1
IOWA	283,324	0.4	311,534	0.4	100,922	0.5	118,406	0.4
KANSAS	775,346	1.2	1,007,872	1.2	157,306	0.8	245,667	0.9
KENTUCKY	244,913	0.4	371,740	0.4	66,249	0.3	77,610	0.3
LOUISIANA	480,006	0.7	2,826,079	3.3	98,192	0.5	1,237,235	4.3
MAINE	456,734	0.7	474,999	0.6	92,475	0.5	316,938	1.1
MARYLAND	1,783,998	2.7	2,373,197	2.8	535,774	2.7	768,039	2.7
MASSACHUSETTS	3,729,145	5.6	4,596,210	5.4	888,793	4.5	1,722,955	6.0
MICHIGAN	1,695,844	2.6	1,735,274	2.0	506,334	2.6	681,314	2.4
MINNESOTA	1,048,530	1.6	1,158,825	1.4	380,922	1.9	392,561	1.4
MISSISSIPPI	635,953	1.0	1,168,160	1.4	139,723	0.7	599,145	2.1
MISSOURI	3,191,183	4.8	4,349,105	5.1	1,180,815	5.9	1,427,499	5.0
MONTANA	31,762	0.1	42,009	0.1	5,449	*	10,972	*
NEBRASKA	99,675	0.2	105,767	0.1	27,003	0.1	20,830	0.1
NEVADA	50,254	0.1	78,356	0.1	17,604	0.1	23,702	0.1
NEW HAMPSHIRE	305,286	0.5	391,980	0.5	154,408	0.8	176,126	0.6
NEW JERSEY	1,517,060	2.3	2,302,543	2.7	593,421	3.0	793,078	2.8
NEW MEXICO	286,126	0.4	383,024	0.5	55,189	0.3	74,867	0.3
NEW YORK	5,647,704	8.5	6,480,662	7.6	1,502,396	7.6	1,970,709	6.8
NORTH CAROLINA	651,380	1.0	825,069	1.0	268,324	1.4	316,206	1.1
NORTH DAKOTA	69,266	0.1	104,167	0.1	13,598	0.1	38,899	0.1
OHIO	1,616,918	2.4	2,436,400	2.8	465,688	2.3	651,223	2.3
OKLAHOMA	419,982	0.6	620,914	0.7	88,133	0.4	138,919	0.5
OREGON	130,971	0.2	113,730	0.1	28,313	0.1	38,920	0.1
PENNSYLVANIA	2,166,190	3.3	2,374,465	2.8	614,537	3.1	601,806	2.1
RHODE ISLAND	261,041	0.4	234,763	0.3	120,082	0.6	127,680	0.4
SOUTH CAROLINA	296,753	0.5	434,139	0.5	115,643	0.6	20,109	0.7
SOUTH DAKOTA	16,942	*	54,397	0.1	5,085	*	7,933	*
TENNESSEE	519,704	0.8	502,019	0.6	186,384	0.9	167,015	0.6
TEXAS	5,344,938	8.1	7,415,966	8.6	977,071	4.9	2,007,702	7.0
UTAH	250,881	0.4	403,988	0.5	65,068	0.3	94,531	0.3
VERMONT	124,506	0.2	166,926	0.2	17,996	0.1	40,634	0.1
VIRGINIA	3,743,615	5.0	3,590,868	4.2	1,768,077	8.9	1,991,007	6.9
WASHINGTON	2,109,804	3.2	2,588,444	3.0	634,725	3.2	709,897	2.5
WEST VIRGINIA	85,797	0.1	88,779	0.1	10,438	0.1	16,065	0.1
WISCONSIN	368,107	0.6	597,708	0.7	123,922	0.6	228,980	0.8
WYOMING	33,188	0.1	63,872	0.1	2,001	*	6,662	*

¹ For clarification on the limitations and conditions of coverage, see the Introduction.

Note: An "*****" in the percent column represents a figure of less than 0.05 percent. Percentages may not add up due to rounding.

**Table 3. Net Value and Percent Distribution of DOD Military Procurement Actions,
By State, According to Department: FY 1981¹**

(Amounts in Thousands)

STATE	TOTAL ²		ARMY	NAVY	AIR FORCE	DEFENSE LOGISTICS AGENCY
	AMOUNT	PERCENT				
TOTAL, U S	\$96,653,244 -----		\$22,237,498 -----	\$29,333,509 -----	\$27,816,614 -----	\$15,230,628 -----
NOT DISTRIBUTED BY STATE	10,773,245		4,128,518	1,919,559	2,547,059	2,064,032
STATE TOTALS	85,879,999 -----	100.0 -----	18,108,980 -----	27,413,950 -----	25,269,555 -----	13,166,596 -----
ALABAMA	790,589	0.9	382,859	62,675	153,239	185,262
ALASKA	323,440	0.4	44,156	29,195	73,896	159,193
ARIZONA	1,123,332	1.3	429,435	213,241	411,325	23,233
ARKANSAS	153,313	0.2	94,453	1,003	21,620	36,837
CALIFORNIA	16,629,796	19.4	3,574,777	6,170,560	4,882,591	1,631,074
COLORADO	935,294	1.1	129,944	43,701	697,340	16,344
CONNECTICUT	4,492,205	5.2	959,166	1,733,852	1,702,313	90,380
DELAWARE	236,270	0.3	12,626	5,300	19,256	198,621
DISTRICT OF COLUMBIA	594,596	0.7	43,007	353,576	48,480	45,612
FLORIDA	3,094,358	3.6	838,433	532,436	519,885	137,341
GEORGIA	1,245,072	1.5	275,210	105,891	728,941	133,927
HAWAII	590,671	0.7	156,837	143,951	30,716	250,113
IDAHO	28,030	*	1,323	704	9,489	16,471
ILLINOIS	1,155,091	1.4	274,925	191,137	401,900	275,397
INDIANA	1,713,292	2.0	833,238	177,470	406,760	278,667
IOWA	311,534	0.4	112,723	46,368	14,546	37,897
KANSAS	1,007,372	1.2	177,663	32,140	758,801	39,082
KENTUCKY	371,740	0.4	118,102	7,971	12,540	232,641
LOUISIANA	2,826,079	3.3	73,920	167,419	31,328	2,553,379
MAINE	474,399	0.6	35,675	391,378	29,341	18,587
MARYLAND	2,373,197	2.8	264,226	918,381	829,302	191,466
MASSACHUSETTS	4,596,210	5.4	1,314,942	1,636,938	1,396,290	158,156
MICHIGAN	1,735,274	2.0	1,165,776	229,298	190,328	142,339
MINNESOTA	1,158,325	1.4	211,219	699,145	67,784	57,942
MISSISSIPPI	1,168,160	1.4	229,335	779,889	53,386	105,417
MISSOURI	4,349,105	5.1	509,561	1,933,623	1,789,844	103,312
MONTANA	42,009	0.1	9,689	154	9,706	22,460
NEBRASKA	105,767	0.1	18,092	836	55,260	27,857
NEVADA	78,356	0.1	23,518	7,890	44,192	1,177
NEW HAMPSHIRE	391,980	0.5	143,621	130,303	105,636	11,042
NEW JERSEY	2,302,543	2.7	303,713	1,131,116	431,938	328,134
NEW MEXICO	383,024	0.5	115,470	1,966	145,108	111,031
NEW YORK	6,480,662	7.6	513,593	3,435,836	1,493,520	547,616
NORTH CAROLINA	825,069	1.0	233,374	309,627	92,882	188,390
NORTH DAKOTA	104,167	0.1	50,749	870	33,147	19,401
OHIO	2,436,400	2.8	1,048,464	404,771	833,114	143,568
OKLAHOMA	620,314	0.7	71,914	40,207	266,699	241,871
OREGON	113,730	0.1	13,635	36,152	23,483	35,770
PENNSYLVANIA	2,374,465	2.8	784,739	659,835	381,503	506,565
RHODE ISLAND	234,763	0.3	30,001	160,708	4,029	37,431
SOUTH CAROLINA	434,139	0.5	70,284	163,075	29,231	171,336
SOUTH DAKOTA	54,397	0.1	29,220	582	11,563	13,032
TENNESSEE	502,019	0.6	168,649	30,603	139,769	155,883
TEXAS	7,415,966	8.6	1,100,827	670,432	2,753,116	2,879,360
UTAH	403,988	0.5	73,640	20,116	250,460	52,290
VERMONT	166,926	0.2	60,982	14,725	87,304	3,878
VIRGINIA	3,590,368	4.2	503,161	2,548,796	188,867	116,951
WASHINGTON	2,588,444	3.0	286,837	862,496	1,290,637	140,283
WEST VIRGINIA	88,779	0.1	5,967	20,932	28,284	33,584
WISCONSIN	597,706	0.7	182,659	154,415	78,459	167,951
WYOMING	63,372	0.1	2,451	214	10,401	50,806

¹ For clarification on the limitations and conditions of coverage, see the Introduction.

² Total includes all departments shown, plus other defense agencies.

Note: An "*" in the percent column represents a figure of less than 0.05 percent. Percentages may not add up due to rounding.

**Table 4. Net Value and Percent Distribution of DOD Military Procurement Actions,
By State: FY 1979, FY 1980, and FY 1981¹**

(Amounts in Thousands)

STATE	FISCAL YEAR 1979 (OCT 78-SEP 79)		FISCAL YEAR 1980 (OCT 79-SEP 80)		FISCAL YEAR 1981 (OCT 80-SEP 81)	
	AMOUNT	PERCENT	AMOUNT	PERCENT	AMOUNT	PERCENT
TOTAL, U.S.	\$65,481,031 =====		\$76,430,383 =====		\$96,653,244 =====	
NOT DISTRIBUTED BY STATE	8,827,886		10,136,538		10,773,245	
STATE TOTALS	56,653,145	100.0	66,293,845	100.0	85,879,999	100.0
ALABAMA	493,288	0.9	625,864	0.9	790,589	0.9
ALASKA	214,971	0.4	250,899	0.4	323,440	0.4
ARIZONA	692,937	1.2	727,193	1.1	1,123,332	1.3
ARKANSAS	71,675	0.1	122,159	0.2	153,913	0.2
CALIFORNIA	11,674,320	20.6	13,852,612	20.9	16,629,796	19.4
COLORADO	411,917	0.7	509,859	0.8	935,294	1.1
CONNECTICUT	3,777,393	6.7	3,867,188	5.8	4,492,205	5.2
DELAWARE	85,763	0.2	239,628	0.4	236,270	0.3
DISTRICT OF COLUMBIA	569,028	1.0	590,257	0.9	594,698	0.7
FLORIDA	1,760,926	3.1	1,984,335	3.0	3,094,358	3.6
GEORGIA	663,449	1.2	883,694	1.3	1,245,072	1.5
HAWAII	307,041	0.5	315,251	0.5	590,671	0.7
IDAHO	21,861	*	19,456	*	28,030	*
ILLINOIS	752,434	1.3	944,812	1.4	1,155,091	1.4
INDIANA	1,107,185	2.0	1,289,812	1.9	1,713,292	2.0
IOWA	253,257	0.5	283,324	0.4	311,534	0.4
KANSAS	590,057	1.0	775,346	1.2	1,007,872	1.2
KENTUCKY	163,231	0.3	244,913	0.4	371,740	0.4
LOUISIANA	274,213	0.5	480,006	0.7	2,826,079	3.3
MAINE	407,061	0.7	456,734	0.7	474,999	0.6
MARYLAND	1,503,298	2.7	1,783,998	2.7	2,373,197	2.8
MASSACHUSETTS	2,982,783	5.3	3,729,145	5.6	4,596,210	5.4
MICHIGAN	1,493,592	2.6	1,695,844	2.6	1,735,274	2.0
MINNESOTA	896,470	1.6	1,048,530	1.6	1,158,825	1.4
MISSISSIPPI	703,188	1.2	635,953	1.0	1,168,160	1.4
MISSOURI	3,283,929	5.8	3,191,183	4.8	4,349,105	5.1
MONTANA	43,020	0.1	31,762	*	42,009	0.1
NEBRASKA	85,746	0.2	99,675	0.2	105,767	0.1
NEVADA	66,849	0.1	50,254	0.1	78,356	0.1
NEW HAMPSHIRE	235,372	0.4	305,286	0.5	391,980	0.5
NEW JERSEY	1,300,060	2.3	1,517,060	2.3	2,302,543	2.7
NEW MEXICO	253,297	0.5	286,126	0.4	383,024	0.5
NEW YORK	4,912,368	8.7	5,647,704	8.5	6,480,662	7.6
NORTH CAROLINA	563,817	1.0	651,380	1.0	825,069	1.0
NORTH DAKOTA	63,378	0.1	69,266	0.1	104,167	0.1
OHIO	1,275,273	2.3	1,616,918	2.4	2,436,400	2.8
OKLAHOMA	316,713	0.6	419,982	0.6	620,914	0.7
OREGON	147,104	0.3	130,971	0.2	113,730	0.1
PENNSYLVANIA	1,877,706	3.3	2,166,190	3.3	2,374,465	2.8
RHODE ISLAND	192,259	0.3	261,041	0.4	234,763	0.3
SOUTH CAROLINA	290,778	0.5	296,753	0.4	434,139	0.5
SOUTH DAKOTA	21,210	*	16,942	*	54,397	0.1
TENNESSEE	473,642	0.8	519,704	0.8	502,019	0.6
TEXAS	4,235,790	7.5	5,344,938	8.1	7,415,966	8.6
UTAH	226,425	0.4	250,881	0.4	403,988	0.5
VERMONT	100,017	0.2	124,506	0.2	166,926	0.2
VIRGINIA	2,747,036	4.8	3,343,615	5.0	3,590,868	4.2
WASHINGTON	1,539,568	2.7	2,109,804	3.2	2,588,444	3.0
WEST VIRGINIA	61,578	0.1	85,797	0.1	88,779	0.1
WISCONSIN	372,998	0.7	366,107	0.6	597,706	0.7
WYOMING	51,874	0.1	33,188	0.1	63,872	0.1

¹ For clarification on the limitations and conditions of coverage, see the Introduction.

Note: An "*" in the percent column represents a figure of less than 0.05 percent. Percentages may not add up due to rounding.

**Table 5. Net Value of DOD Civil Functions Procurement Actions,
By State: FY 1978, FY 1979, FY 1980, and FY 1981^{1 2}**
(Amounts in Thousands)

STATE	FISCAL YEAR 1978 (OCT 77-SEP 78)	FISCAL YEAR 1979 (OCT 78-SEP 79)	FISCAL YEAR 1980 (OCT 79-SEP 80)	FISCAL YEAR 1981 (OCT 80-SEP 81)
TOTAL U.S.	\$1,836,703 =====	\$1,607,949 =====	\$1,944,484 =====	\$2,056,759 =====
NOT DISTRIBUTED BY STATE	154,266	141,131	168,780	175,543
TOTAL	1,682,437 -----	1,466,818 -----	1,775,704 -----	1,881,216 -----
ALABAMA	27,379	30,244	120,551	57,163
ALASKA	0	0	6,456	25,983
ARIZONA	11,749	12,576	2,463	18,475
ARKANSAS	39,422	48,700	50,225	64,572
CALIFORNIA	205,361	129,524	61,817	69,029
COLORADO	14,877	9,341	8,441	2,780
CONNECTICUT	14,731	11,045	11,873	2,053
DELAWARE	3,126	739	4,200	1,567
DISTRICT OF COLUMBIA	6,753	7,293	2,091	31,896
FLORIDA	39,236	6,340	68,863	75,085
GEORGIA	31,703	28,626	77,298	89,116
HAWAII	5,041	20,050	159	75
IDAHO	180,103	7,978	8,659	12,740
ILLINOIS	57,827	38,258	61,971	61,624
INDIANA	25,532	32,358	7,974	4,352
IOWA	18,989	21,164	19,778	21,683
KANSAS	21,168	23,254	30,899	24,765
KENTUCKY	50,724	34,680	32,606	35,486
LOUISIANA	135,906	57,196	214,637	219,054
MAINE	651	801	2,684	1,408
MARYLAND	29,734	13,129	11,402	17,474
MASSACHUSETTS	18,597	7,882	14,026	8,736
MICHIGAN	34,811	39,354	5,905	42,022
MINNESOTA	6,835	12,207	21,743	29,638
MISSISSIPPI	99,509	54,149	172,738	274,544
MISSOURI	87,317	67,822	72,880	62,366
MONTANA	12,572	8,829	3,479	1,457
NEBRASKA	9,038	3,558	3,956	3,897
NEVADA	17	83	136	25
NEW HAMPSHIRE	1,641	2,459	1,195	1,095
NEW JERSEY	21,502	15,822	15,042	10,715
NEW MEXICO	3,511	19,184	8,751	2,746
NEW YORK	32,982	22,594	31,085	39,849
NORTH CAROLINA	21,537	26,625	25,379	34,949
NORTH DAKOTA	6,521	4,108	3,884	2,771
OHIO	30,610	27,376	16,417	35,145
OKLAHOMA	29,994	16,391	46,898	36,064
OREGON	49,221	60,609	65,211	57,598
PENNSYLVANIA	76,717	83,298	49,737	31,182
RHODE ISLAND	2,286	332	751	1,196
SOUTH CAROLINA	10,707	10,644	34,691	47,835
SOUTH DAKOTA	4,622	7,069	4,029	2,186
TENNESSEE	11,284	18,386	13,702	19,052
TEXAS	28,173	87,568	68,414	87,998
UTAH	508	795	474	469
VERMONT	1,000	623	632	677
VIRGINIA	23,779	18,963	23,234	20,953
WASHINGTON	117,833	155,992	207,003	204,447
WEST VIRGINIA	9,172	48,418	38,100	25,661
WISCONSIN	9,738	12,331	11,458	8,955
WYOMING	171	49	107	158

¹ For clarification on the limitations and conditions of coverage, see the Introduction.

² This table includes Civil Functions Procurement Actions of the Army Corps of Engineers for flood control and rivers and harbors work. (Civil Functions Procurement Actions are also included in Table 1.)

ND