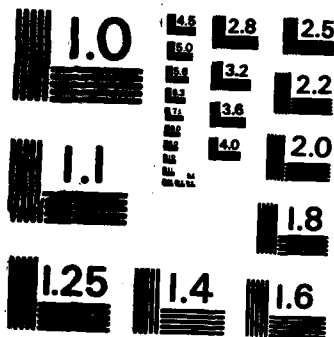


AD-A151 345 PRIME CONTRACT AWARDS BY STATE FY 1978(U) WASHINGTON
HEADQUARTERS SERVICES (DOD) DC DIRECTORATE FOR
UNCLASSIFIED INFORMATION OPERATIONS AND REPORTS 1978 D10R/P09-78
F/G 15/5

1/1

NL





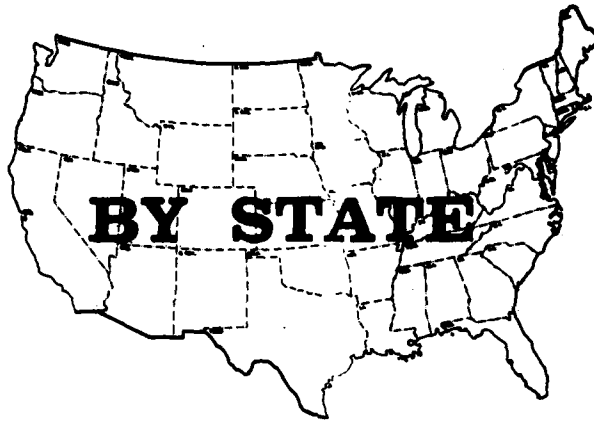
MICROCOPY RESOLUTION TEST CHART
NATIONAL BUREAU OF STANDARDS-1963-A

DIOR/P09-78

AD-A151345-



PRIME CONTRACT AWARDS



FISCAL YEAR 1978

**DEPARTMENT OF DEFENSE
WASHINGTON HEADQUARTERS SERVICES
DIRECTORATE FOR INFORMATION OPERATIONS AND REPORTS**

**DEPARTMENT OF DEFENSE
ARMY CIVIL FUNCTIONS PRIME CONTRACT AWARDS**

FLOOD CONTROL, AND RIVERS AND HARBORS WORK

DEPARTMENT OF DEFENSE
PRIME CONTRACT AWARDS BY STATE

CONTENTS

	PAGE
<u>MILITARY PRIME CONTRACT AWARDS</u>	
TABLE 1..FISCAL YEAR TO DATE AND QUARTERLY AWARDS.....	1
TABLE 2..AWARDS BY DEPARTMENT.....	2
TABLE 3..AWARDS FOR THE THREE PRECEDING FISCAL YEARS.....	3
<u>ARMY CIVIL FUNCTIONS PRIME CONTRACT AWARDS</u>	
TABLE 4..AWARDS FOR THE THREE PRECEDING FISCAL YEARS AND FISCAL YEAR TO DATE.....	4
<u>FOOTNOTES</u>	5

DEPARTMENT OF DEFENSE
PRIME CONTRACT AWARDS BY STATE

TABLE 1 - NET VALUE OF MILITARY PROCUREMENT ACTIONS A/
FISCAL YEARS 1977 AND 1978

(AMOUNTS IN THOUSANDS)

STATE	FISCAL YEAR TO DATE				THREE MONTHS PERIOD			
	FISCAL YEAR 1977		FISCAL YEAR 1978		FISCAL YEAR 1977		FISCAL YEAR 1978	
	JUL-SEP 1977		JUL-SEP 1978		JUL-SEP 1977		JUL-SEP 1978	
	AMOUNT	PERCENT	AMOUNT	PERCENT	AMOUNT	PERCENT	AMOUNT	PERCENT
TOTAL, U.S. <u>B/</u>	852,751,721		861,174,090		814,817,298		815,035,014	
NOT DISTRIBUTED BY STATE <u>C/</u>	7,212,184		7,588,818		2,672,133		2,586,146	
STATE TOTALS <u>D/</u>	845,539,537	100.0	853,585,272	100.0	812,145,165	100.0	812,448,868	100.0
ALABAMA	421,217	0.9	479,836	0.9	137,248	1.1	138,723	1.8
ALASKA	123,886	0.3	194,823	0.4	38,316	0.3	47,838	0.4
ARIZONA	940,282	1.2	634,773	1.2	135,788	1.1	192,789	1.5
ARKANSAS	70,585	0.2	85,388	0.2	35,956	0.3	34,838	0.3
CALIFORNIA	18,878,188	22.1	18,516,735	19.6	2,876,847	19.6	2,688,566	21.3
COLORADO	379,169	0.8	434,983	0.8	164,264	0.9	161,484	1.3
CONNECTICUT	1,974,323	4.3	3,489,199	6.5	335,228	2.8	494,812	3.9
DELAWARE	58,662	0.1	78,115	0.1	8,942	0.1	7,659	0.1
DISTRICT OF COLUMBIA	697,340	1.5	537,194	1.0	116,773	1.0	95,338	0.8
FLORIDA	1,868,677	2.3	1,393,328	2.6	299,467	2.5	263,515	2.1
GEORGIA	517,688	1.1	793,478	1.5	184,486	1.5	225,275	1.8
HAWAII	223,885	0.5	292,947	0.6	40,239	0.3	58,469	0.5
IDaho	15,525	0	19,117	0	4,483	0	4,262	0
ILLINOIS	959,934	1.2	712,488	1.3	198,546	1.6	222,980	1.8
INDIANA	834,832	1.0	988,888	1.7	279,533	2.3	273,668	2.2
IOWA	288,758	0.6	361,512	0.7	54,744	0.5	103,547	0.8
KANSAS	363,265	0.8	431,323	0.8	110,275	0.9	125,889	1.0
KENTUCKY	221,461	0.5	176,577	0.3	85,187	0.7	46,887	0.4
LOUISIANA	398,651	0.9	584,562	0.9	111,878	1.9	181,639	0.8
MAINE	323,376	0.7	348,868	0.6	57,182	0.5	184,478	0.8
MARYLAND	1,882,273	2.4	1,316,574	2.5	353,833	2.9	281,938	2.3
MASSACHUSETTS	2,395,491	5.3	2,787,889	5.2	482,884	4.0	478,242	3.8
MICHIGAN	1,244,458	2.7	1,382,188	2.6	288,869	2.2	318,411	2.5
MINNESOTA	684,238	1.4	738,894	1.4	186,335	1.5	162,683	1.3
MISSISSIPPI	493,211	1.1	1,485,492	2.8	199,332	1.6	438,796	3.4
MISSOURI	2,361,878	5.2	2,999,992	5.6	376,859	3.1	474,568	3.8
MONTANA	173,731	0.4	24,229	0.1	5,157	0	3,913	0
NEBRASKA	79,915	0.2	71,628	0.1	41,816	0.3	21,677	0.2
NEVADA	27,875	0.1	22,284	0.1	14,389	0.1	13,691	0.1
NEW HAMPSHIRE	153,329	0.3	227,413	0.4	57,948	0.5	68,978	0.5
NEW JERSEY	1,216,613	2.7	1,478,484	2.7	424,628	3.5	388,761	2.5
NEW MEXICO	159,999	0.4	288,888	0.4	31,881	0.3	32,427	0.3
NEW YORK	4,388,271	9.4	4,598,357	8.6	1,149,337	9.5	961,878	7.7
NORTH CAROLINA	373,986	0.8	436,611	0.8	124,885	1.0	133,488	1.1
NORTH DAKOTA	48,933	0.1	59,487	0.1	8,289	0.1	18,689	0.1
OHIO	1,184,188	2.8	1,275,173	2.4	394,361	3.3	358,341	2.8
OKLAHOMA	292,796	0.6	314,563	0.6	61,138	0.5	61,252	0.5
OREGON	77,945	0.2	91,732	0.2	26,387	0.2	29,361	0.2
PENNSYLVANIA	1,694,889	3.6	1,632,481	3.1	392,192	3.2	462,984	3.7
RHODE ISLAND	125,851	0.3	159,966	0.3	47,574	0.4	77,716	0.6
SOUTH CAROLINA	175,418	0.4	195,924	0.4	60,394	0.5	53,666	0.4
SOUTH DAKOTA	13,289	0	28,868	0	3,818	0	7,826	0.1
TENNESSEE	789,718	1.6	921,799	1.8	282,489	3.0	113,627	0.9
TEXAS	2,778,375	6.1	4,943,838	9.2	888,198	6.6	1,899,433	8.8
UTAH	226,754	0.5	214,889	0.4	75,381	0.6	47,279	0.4
VERMONT	119,188	0.3	189,217	0.2	12,989	0.1	13,829	0.1
VIRGINIA	2,838,451	6.5	1,788,148	3.2	898,889	7.4	588,988	4.8
WASHINGTON	1,728,482	3.8	1,887,883	3.4	453,331	3.7	453,749	3.6
WEST VIRGINIA	91,795	0.2	76,815	0.1	21,931	0.2	13,281	0.1
WISCONSIN	416,394	0.9	389,263	0.7	182,738	0.9	188,238	0.8
WYOMING	19,429	0	26,888	0.1	2,678	0	1,714	0

* LESS THAN 0.05 PERCENT.
FOR FOOTNOTES, SEE PAGE 5.

DEPARTMENT OF DEFENSE
PRIME CONTRACT AWARDS BY STATE
TABLE 2 - NET VALUE OF MILITARY PROCUREMENT ACTIONS BY DEPARTMENT ^{A/}
FISCAL YEAR 1978

(AMOUNTS IN THOUSANDS)

STATE	TOTAL ^{1/}		ARMY	NAVY	AIR FORCE	DEFENSE LOGISTICS AGENCY
	AMOUNT	PERCENT				
TOTAL, U.S. ^{B/}	861,174,896		313,168,248	321,493,178	\$14,939,827	\$ 6,354,515
NOT DISTRIBUTED BY STATE ^{C/}	7,588,818		2,586,581	1,714,269	1,882,942	1,391,953
STATE TOTALS ^{D/}	53,593,272	100.0	18,581,667	19,778,989	17,136,885	4,962,562
ALABAMA	479,836	0.9	231,141	28,978	84,644	138,748
ALASKA	194,623	0.4	49,911	29,864	58,231	42,366
ARIZONA	634,773	1.2	213,991	148,799	233,474	18,826
ARKANSAS	85,306	0.2	38,428	3,545	14,758	28,428
CALIFORNIA	18,516,735	19.6	1,771,392	4,432,788	3,260,348	853,626
COLORADO	434,983	0.8	58,988	29,392	289,887	16,686
CONNECTICUT	3,489,199	6.5	325,799	1,648,981	1,454,154	58,387
DELAWARE	78,115	0.1	5,379	1,944	24,752	37,943
DISTRICT OF COLUMBIA	537,194	1.0	41,862	323,996	39,131	67,712
FLORIDA	1,393,328	2.6	398,431	380,519	585,861	73,994
GEORGIA	793,478	1.5	167,388	57,816	500,747	66,382
HAWAII	292,947	0.6	46,416	119,998	14,597	184,166
IDAH0	19,117		1,143	1,167	6,163	18,574
ILLINOIS	712,486	1.3	173,239	75,048	228,540	229,495
INDIANA	908,808	1.7	446,950	124,603	250,721	85,424
IOWA	361,512	0.7	155,268	34,324	83,275	87,868
KANSAS	431,323	0.8	158,232	58,189	182,398	32,035
KENTUCKY	176,577	0.3	83,976	6,179	7,381	78,656
LOUISIANA	594,562	0.9	111,849	219,337	35,294	138,635
MAINE	348,868	0.6	13,112	385,896	15,445	7,159
MARYLAND	1,316,574	2.5	156,525	615,295	335,471	121,223
MASSACHUSETTS	2,787,869	5.2	730,929	987,318	887,470	136,555
MICHIGAN	1,382,180	2.6	1,047,251	104,898	127,510	97,753
MINNESOTA	738,894	1.4	172,271	347,889	150,951	37,947
MISSISSIPPI	1,445,492	2.6	19,788	1,282,216	26,226	77,369
MISSOURI	2,998,992	5.6	290,487	1,874,383	1,587,475	37,546
MONTANA	24,229	0.1	6,814	121	8,530	8,671
NEBRASKA	71,628	0.1	15,643	1,337	41,605	12,348
NEVADA	42,234	0.1	5,871	11,838	22,577	1,588
NEW HAMPSHIRE	227,413	0.4	74,844	82,874	60,888	9,450
NEW JERSEY	1,478,484	2.7	219,238	864,544	153,077	196,162
NEW MEXICO	288,890	0.4	87,975	8,831	86,898	53,195
NEW YORK	4,590,357	8.6	338,826	2,321,477	1,835,514	321,828
NORTH CAROLINA	436,611	0.8	128,888	136,852	45,351	124,410
NORTH DAKOTA	55,487	0.1	32,825	221	17,342	4,998
OHIO	1,275,173	2.4	351,934	342,832	477,479	100,913
OKLAHOMA	314,563	0.6	58,284	14,218	117,819	124,843
OREGON	91,752	0.2	13,689	45,629	15,495	15,674
PENNSYLVANIA	1,632,401	3.1	614,324	541,569	225,684	238,481
RHODE ISLAND	155,966	0.3	24,889	98,199	2,213	30,466
SOUTH CAROLINA	195,924	0.4	25,795	90,828	19,998	58,722
SOUTH DAKOTA	28,865		5,698	2,944	7,815	4,372
TENNESSEE	521,799	1.0	294,953	14,374	111,977	108,257
TEXAS	4,943,838	9.2	773,965	496,871	3,151,732	513,275
UTAH	214,689	0.4	57,468	25,772	82,448	46,656
VERMONT	189,217	0.2	29,879	6,666	72,161	1,271
VIRGINIA	1,788,148	3.2	315,190	1,888,324	106,158	94,125
WASHINGTON	1,887,883	3.4	77,619	935,944	721,963	67,397
WEST VIRGINIA	76,815	0.1	14,398	25,765	9,630	29,936
WISCONSIN	389,283	0.7	149,194	69,595	55,768	112,888
WYOMING	28,888	0.1	174	225	4,563	21,839

^{1/} INCLUDES "OTHER DEFENSE AGENCY" AWARDS NOT INCLUDED ELSEWHERE IN THIS TABLE.
^{2/} LESS THAN 0.05 PERCENT.
FOR FOOTNOTES, SEE PAGE 5.

DEPARTMENT OF DEFENSE
PRIME CONTRACT AWARDS BY STATE
TABLE 3 - NET VALUE OF MILITARY PROCUREMENT ACTIONS BY FISCAL YEAR 3/
FISCAL YEARS 1976, 1977 AND 1978

(AMOUNTS IN THOUSANDS)

STATE	FISCAL YEAR 1976		FISCAL YEAR 1977		FISCAL YEAR 1978	
	AMOUNT	PERCENT	AMOUNT	PERCENT	AMOUNT	PERCENT
TOTAL U.S. <u>2/</u>	844,678,867		852,751,721		861,174,898	
ACT DISTRIBUTED BY STATE <u>2/</u>	5,729,592		7,212,186		7,588,816	
STATE TOTALS <u>2/</u>	38,949,278	100.0	49,539,937	100.0*	53,593,272	100.0
ALABAMA	418,269	1.1	421,217	0.9	479,836	0.9
ALASKA	144,754	0.4	123,886	0.3	194,623	0.4
ARIZONA	614,200	1.6	548,282	1.2	634,773	1.2
ARKANSAS	77,176	0.2	78,989	0.2	85,386	0.2
CALIFORNIA	8,949,118	23.0	10,878,188	22.1	18,516,735	19.6
COLORADO	311,334	0.8	379,169	0.8	434,983	0.8
CONNECTICUT	1,913,809	4.9	1,974,323	4.3	3,489,199	6.5
DELAWARE	36,565	0.1	58,662	0.1	78,115	0.1
DISTRICT OF COLUMBIA	411,541	1.1	697,948	1.5	537,194	1.0
FLORIDA	972,881	2.5	1,868,877	2.3	1,393,328	2.6
GEORGIA	476,917	1.2	517,688	1.1	793,478	1.5
HAWAII	363,358	0.9	223,885	0.5	292,947	0.5
IDaho	18,528	0.0	19,525	0.0	19,117	0.0
ILLINOIS	474,328	1.2	554,924	1.2	712,488	1.3
INDIANA	789,238	2.0	834,832	1.8	988,888	1.7
IONA	229,986	0.6	288,758	0.6	361,512	0.7
KANSAS	387,338	0.9	363,265	0.8	431,322	0.8
KENTUCKY	188,288	0.5	221,461	0.5	176,577	0.3
LOUISIANA	382,719	0.9	398,651	0.9	584,562	0.9
MAINE	283,758	0.7	323,276	0.7	348,868	0.6
MARYLAND	981,623	2.5	1,892,273	2.4	1,316,574	2.5
MASSACHUSETTS	1,994,145	5.0	2,395,491	5.3	2,787,869	5.2
MICHIGAN	945,168	2.5	1,244,458	2.7	1,382,188	2.6
MINNESOTA	698,533	1.8	658,238	1.4	738,894	1.4
MISSISSIPPI	934,615	2.4	493,211	1.1	1,485,492	2.6
MISSOURI	2,294,799	5.9	2,361,878	5.2	2,999,992	5.6
MONTANA	22,839	0.1	173,731	0.4	24,229	0.0
NEBRASKA	43,664	0.1	79,915	0.2	71,628	0.1
NEVADA	19,827	0.0	27,875	0.1	42,234	0.1
NEW HAMPSHIRE	147,441	0.4	153,329	0.3	227,413	0.4
NEW JERSEY	975,325	2.5	1,216,613	2.7	1,478,484	2.7
NEW MEXICO	124,941	0.3	159,999	0.4	288,898	0.4
NEW YORK	3,384,122	8.5	4,388,271	9.4	4,598,357	8.6
NORTH CAROLINA	348,968	0.9	373,586	0.8	436,611	0.8
NORTH DAKOTA	154,566	0.4	43,533	0.1	55,487	0.1
OHIO	921,858	2.4	1,164,188	2.6	1,275,173	2.4
OKLAHOMA	254,878	0.7	292,796	0.6	314,563	0.6
OREGON	51,733	0.1	77,945	0.2	91,752	0.2
PENNSYLVANIA	1,252,488	3.2	1,654,889	3.6	1,632,481	3.0
RHODE ISLAND	94,442	0.2	125,851	0.3	155,966	0.3
SOUTH CAROLINA	196,715	0.4	175,418	0.4	195,924	0.4
SOUTH DAKOTA	14,118	0.0	13,289	0.0	28,865	0.0
TENNESSEE	341,758	0.9	789,718	1.6	521,799	1.0
TEXAS	2,895,438	5.4	2,778,375	6.1	4,943,838	9.2
UTAH	145,285	0.4	228,754	0.5	214,689	0.4
VERMONT	129,234	0.3	119,188	0.3	189,217	0.3
VIRGINIA	1,887,658	4.1	2,838,451	4.5	1,788,148	3.2
WASHINGTON	1,289,258	3.3	1,738,452	3.8	1,887,883	3.4
WEST VIRGINIA	49,339	0.2	91,795	0.2	76,815	0.1
WISCONSIN	258,922	0.6	416,394	0.9	389,263	0.7
WYOMING	28,912	0.1	19,429	0.0	26,888	0.0

FOR FOOTNOTES, SEE PAGE 9.
* LESS THAN 0.05 PERCENT.

DEPARTMENT OF DEFENSE
PRIME CONTRACT AWARDS BY STATE
TABLE 4 - NET VALUE OF CIVIL FUNCTIONS PROCUREMENT ACTIONS A/ E/
FISCAL YEARS 1975, 1976 AND 1977, AND FISCAL YEARS 1977 AND 1978 TO DATE

(AMOUNTS IN THOUSANDS)

STATE	FISCAL YEAR	FISCAL YEAR	FISCAL YEAR	FY 1977	FY 1978
	1975 OCT 74-SEP 75	1976 OCT 75-SEP 76	1977 OCT 76-SEP 77	OCT 76-SEP 77	OCT 77-SEP 78
TOTAL, U.S. <u>B/</u>	\$1,143,788 *****	\$1,499,861 *****	\$1,599,988 *****	\$1,599,988 *****	\$1,836,783 *****
NOT DISTRIBUTED BY STATE <u>C/</u>	181,414	185,467	117,160	117,160	154,266
STATE TOTALS <u>D/</u>	1,842,294 -----	1,393,594 -----	1,482,748 -----	1,482,748 -----	1,682,437 -----
ALABAMA	72,531	34,642	42,885	42,885	27,379
ALASKA	8,947	18,827	19,957	19,957	0
ARIZONA	392	2,729	2,244	2,244	11,749
ARKANSAS	36,487	41,236	27,983	27,983	39,422
CALIFORNIA	44,949	91,865	104,959	104,959	285,361
COLORADO	14,849	19,184	16,844	16,844	14,877
CONNECTICUT	5,815	7,153	7,886	7,886	14,731
DELAWARE	1,657	532	537	537	3,126
DISTRICT OF COLUMBIA	8,145	3,128	4,653	4,653	6,753
FLORIDA	17,763	37,962	53,427	53,427	39,236
GEORGIA	42,473	24,389	22,885	22,885	31,793
HAWAII	2,862	2,677	19,789	19,789	5,841
IDAHO	28,291	21,977	12,172	12,172	168,183
ILLINOIS	43,187	49,787	26,994	26,994	57,827
INDIANA	18,827	28,954	24,692	24,692	25,532
IOWA	15,395	24,217	23,367	23,367	18,989
KANSAS	14,711	23,937	25,294	25,294	21,168
KENTUCKY	31,134	52,529	81,999	81,999	58,724
LOUISIANA	97,825	141,251	124,396	124,396	135,986
MAINE	884	2,322	659	659	651
MARYLAND	7,676	15,588	15,854	15,854	29,734
MASSACHUSETTS	18,873	21,928	22,231	22,231	18,597
MICHIGAN	6,524	18,453	18,543	18,543	34,811
MINNESOTA	7,485	7,488	18,722	18,722	6,835
MISSISSIPPI	26,687	39,645	63,374	63,374	99,589
MISSOURI	56,412	182,443	182,895	182,895	87,347
MONTANA	18,523	26,651	7,277	7,277	12,572
NEBRASKA	4,182	7,578	15,821	15,821	9,838
NEVADA	0	0	17	17	17
NEW HAMPSHIRE	673	5,952	445	445	1,641
NEW JERSEY	14,322	12,686	21,519	21,519	21,582
NEW MEXICO	18,844	3,787	11,495	11,495	3,511
NEW YORK	32,768	31,785	61,636	61,636	32,982
NORTH CAROLINA	19,174	22,895	38,786	38,786	21,537
NORTH DAKOTA	4,439	11,228	6,872	6,872	6,521
OHIO	32,388	39,872	33,418	33,418	30,610
OKLAHOMA	28,742	49,244	36,676	36,676	29,984
OREGON	39,838	52,854	32,573	32,573	49,221
PENNSYLVANIA	61,894	79,185	118,965	118,965	76,717
RHODE ISLAND	389	336	229	229	2,286
SOUTH CAROLINA	7,847	9,519	9,385	9,385	14,787
SOUTH DAKOTA	2,119	2,428	1,713	1,713	4,622
TENNESSEE	13,972	12,344	18,298	18,298	11,284
TEXAS	46,276	47,411	56,422	56,422	28,173
UTAH	426	173	288	288	588
VERMONT	218	641	379	379	1,888
VIRGINIA	19,888	12,431	36,518	36,518	23,779
WASHINGTON	38,281	115,379	114,338	114,338	117,833
WEST VIRGINIA	31,357	22,858	16,844	16,844	9,172
WISCONSIN	9,133	9,221	2,793	2,793	9,738
WYOMING	0	42	154	154	171

FOR FOOTNOTES, SEE PAGE 5.

FOOTNOTES:

a/ NOTES ON COVERAGE: It is emphasized that data on prime contracts by state do not provide any direct indication as to the state in which the actual production work is done. For the majority of contracts with manufacturers, the data reflect the location of the plant where the product will be finally processed and assembled. If processing or assembly is to be performed in more than one plant of a prime contractor, the location shown is the plant where the largest dollar amount of work will take place. Construction contracts are shown for the state where the construction is to be performed. For purchases from wholesale or other distribution firms, the location is the address of the contractor's place of business. For service contracts, the location is generally the place where the service is performed, but for transportation and communications services the home office address is frequently used.

More important is the fact that the reports refer to prime contracts only, and cannot in any way reflect the distribution of the very substantial amount of material and component fabrication and other subcontract work that may be done outside the state where final assembly or delivery takes place.

The report includes definitive contracts and funded portions of letter contracts and letters of intent, job orders, task orders, and purchase orders on industrial firms, and also includes interdepartmental purchases, made from or through other governmental agencies, such as those made through the General Services Administration. The state data include upward or downward revisions and adjustments of \$10,000 or more, such as cancellations, price changes, supplemental agreements, amendments, etc.

The estimated amounts of indefinite delivery, open-end or call-type contracts for petroleum are included in the report. Except for petroleum contracts, the report does not include indefinite delivery, open-end, or call-type contracts as such, but does include specific purchases or delivery orders of \$10,000 or more which are placed against these contracts. Also excluded from the report are project orders, that is production orders issued to Government-owned-and-operated facilities such as Navy shipyards. However, the report includes the contracts placed with industry by the Government-operated facility to complete the production order.

- b/** Includes all contracts awarded for work performance in the United States. The United States includes the 50 states, the District of Columbia, U. S. possessions, the Canal Zone, the Commonwealth of Puerto Rico, the Trust Territories of the Pacific, and other areas subject to the complete sovereignty of the U. S., but does not include occupied Japanese Islands.
- c/** Includes contracts of less than \$10,000, all contracts awarded for work performance in the U. S. possessions, the Commonwealth of Puerto Rico, the Trust Territories of the Pacific, and other areas subject to the complete sovereignty of the U. S., contracts which are in a classified location, that portion of intragovernmental contracts and directed procurements for foreign governments under The Foreign Military Sales Act entered into overseas, and contracts for the Civilian Health and Medical Program of the Uniformed Services (CHAMPUS).
- d/** Net value of contracts of \$10,000 or more for work in each state and the District of Columbia.
- e/** Civil Functions of the Army Corps of Engineers for flood control and rivers and harbors work. Civil Functions data are shown separately, and are not included in military functions tabulations.

NOTE: Percentages may not add due to rounding.

This pamphlet may be reproduced without permission.

Issued Semiannually by
Department of Defense
Washington Headquarters Services
Directorate for Information Operations
and Reports

END

Dtjic

5-86