

AD-A151 344

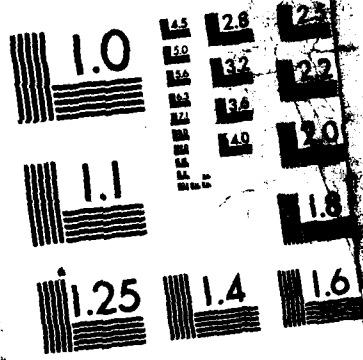
PRIME CONTRACT AWARDS BY STATE FY 1977(U) WASHINGTON
HEADQUARTERS SERVICES (DDO) DC DIRECTORATE FOR
INFORMATION OPERATIONS AND REPORTS 1977 D10R/P09-77
F/G 15/5

1/1

UNCLASSIFIED

NL





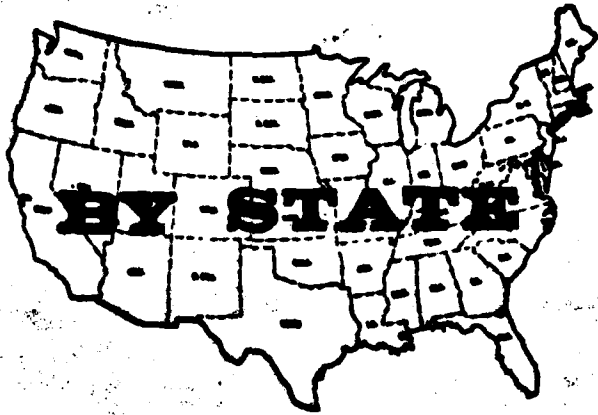
RESOLUTION TEST CHART
1963-A

DIOR/P09-77

AD-A151349



PRIME CONTRACT AWARDS



FISCAL YEAR 1977

DEPARTMENT OF DEFENSE
WASHINGTON HEADQUARTERS SERVICES
DIRECTORATE FOR INFORMATION OPERATIONS AND REPORTS

DEPARTMENT OF DEFENSE
PRIME CONTRACT AWARDS BY STATE

CONTENTS

	PAGE
<u>MILITARY PRIME CONTRACT AWARDS</u>	
TABLE 1..FISCAL YEAR TO DATE AND QUARTERLY AWARDS.....	1
TABLE 2..AWARDS BY DEPARTMENT.....	2
TABLE 3..AWARDS FOR THE THREE PRECEDING FISCAL YEARS.....	3
<u>ARMY CIVIL FUNCTIONS PRIME CONTRACT AWARDS</u>	
TABLE 4..AWARDS FOR THE THREE PRECEDING FISCAL YEARS AND FISCAL YEAR TO DATE.....	4
<u>FOOTNOTES</u>	5

DEPARTMENT OF DEFENSE
PRIME CONTRACT AWARDS BY STATE

TABLE 1 - NET VALUE OF MILITARY PROCUREMENT ACTIONS A/

FISCAL YEARS 1976 AND 1977 E/

(AMOUNTS IN THOUSANDS)

STATE	FISCAL YEAR				THREE MONTHS PERIOD F/			
	1976		1977		FISCAL YEAR 1976		FISCAL YEAR 1977	
	JULY 1975-JUNE 1976		OCT 76 - SEP 77		APRIL-JUNE 1976		JUL-SEP 1977	
	AMOUNT	PERCENT	AMOUNT	PERCENT	AMOUNT	PERCENT	AMOUNT	PERCENT
TOTAL, U.S. B/	844,478,867		852,751,721		812,004,891		814,817,293	
NOT DISTRIBUTED BY STATE C/	5,729,592		7,212,184		3,733,627		2,672,133	
STATE TOTALS D/	38,949,275	100.0	45,539,537	100.0	20,291,364	100.0	12,145,166	100.0
ALABAMA	418,249	1.1	421,217	0.9	140,720	1.4	137,248	1.1
ALASKA	144,754	0.4	123,086	0.3	40,021	0.4	38,316	0.3
ARIZONA	614,288	1.6	548,282	1.2	92,905	0.9	135,768	1.1
ARKANSAS	77,176	0.2	78,585	0.2	33,501	0.3	35,556	0.3
CALIFORNIA	8,949,118	23.0	10,878,180	22.1	2,064,579	20.1	2,376,847	19.6
COLORADO	311,334	0.8	379,169	0.8	109,635	1.1	184,264	0.9
CONNECTICUT	1,913,889	4.9	1,974,323	4.3	470,865	4.6	335,228	2.8
DELAWARE	36,565	0.1	58,662	0.1	8,054	0.1	4,942	0.1
DISTRICT OF COLUMBIA	411,541	1.1	497,540	1.1	54,451	0.9	116,773	1.0
FLORIDA	972,881	2.5	1,888,877	2.3	232,704	2.3	299,467	2.5
GEORGIA	476,917	1.2	517,888	1.1	157,686	1.5	184,486	1.5
HAWAII	363,358	0.9	223,805	0.5	40,970	0.4	48,239	0.3
IDAH0	16,528	0	15,525	0	8,530	0.1	4,403	0
ILLINOIS	474,328	1.2	959,934	1.2	135,832	1.3	196,546	1.6
INDIANA	785,230	2.0	834,832	1.8	223,236	2.2	279,633	2.3
IOWA	229,986	0.6	288,758	0.6	92,442	0.9	54,744	0.5
KANSAS	387,338	0.8	363,265	0.8	66,870	0.7	110,275	0.9
KENTUCKY	188,288	0.5	221,461	0.5	68,274	0.7	85,187	0.7
LOUISIANA	282,719	0.8	398,651	0.9	157,224	1.5	111,878	0.9
MAINE	283,758	0.7	323,276	0.7	22,335	0.2	57,182	0.5
MARYLAND	981,623	2.5	1,882,273	2.4	356,499	3.5	353,833	2.9
MASSACHUSETTS	1,958,145	5.0	2,395,491	5.3	467,562	4.5	482,884	4.0
MICHIGAN	965,188	2.5	1,244,458	2.7	387,326	3.8	268,869	2.2
MINNESOTA	698,532	1.8	856,230	1.4	173,211	1.7	186,355	1.5
MISSISSIPPI	934,615	2.4	493,211	1.1	83,060	0.8	199,332	1.6
MISSOURI	2,294,789	5.9	2,361,878	5.2	966,603	9.4	376,859	3.1
MONTANA	22,839	0.1	173,731	0.4	5,300	0.1	5,157	0
NEBRASKA	43,664	0.1	79,915	0.2	13,044	0.1	41,816	0.3
NEVADA	19,827	0.1	27,875	0.1	18,427	0.1	14,389	0.1
NEW HAMPSHIRE	167,441	0.4	153,329	0.3	47,043	0.5	57,948	0.5
NEW JERSEY	975,325	2.5	1,216,813	2.7	279,534	2.7	424,628	3.5
NEW MEXICO	124,941	0.3	159,999	0.4	30,933	0.3	31,881	0.3
NEW YORK	3,384,122	8.5	4,388,271	9.4	792,842	7.7	1,149,337	9.5
NORTH CAROLINA	346,988	0.9	373,586	0.8	190,793	0.9	124,685	1.0
NORTH DAKOTA	154,566	0.4	43,533	0.1	5,528	0.1	8,289	0.1
OHIO	921,858	2.4	1,184,188	2.6	222,036	2.2	394,361	3.3
OKLAHOMA	254,878	0.7	292,796	0.6	72,077	0.7	61,138	0.5
OREGON	51,733	0.1	77,945	0.2	10,362	0.1	26,307	0.2
PENNSYLVANIA	1,252,488	3.2	1,654,889	3.6	430,643	4.0	392,152	3.2
RHODE ISLAND	94,442	0.2	125,851	0.3	29,217	0.3	47,574	0.4
SOUTH CAROLINA	156,715	0.4	175,418	0.4	70,051	0.7	68,394	0.5
SOUTH DAKOTA	14,118	0	13,289	0	3,964	0	3,818	0
TENNESSEE	361,758	0.9	789,718	1.6	76,578	0.7	162,409	1.0
TEXAS	2,895,488	5.4	2,778,375	6.1	479,685	4.7	888,198	6.6
UTAH	145,288	0.4	226,754	0.5	45,632	0.4	75,381	0.6
VERMONT	189,234	0.3	119,188	0.3	78,777	0.8	12,989	0.1
VIRGINIA	1,487,858	4.1	2,838,451	4.9	520,102	5.0	898,869	7.4
WASHINGTON	1,289,258	3.3	1,738,452	3.8	385,030	3.0	453,331	3.7
WEST VIRGINIA	85,339	0.2	91,795	0.2	13,021	0.1	21,931	0.2
WISCONSIN	258,922	0.6	428,394	0.9	50,649	0.5	182,738	0.9
WYOMING	28,912	0.1	19,429	0	5,271	0.1	2,678	0

A/COMPARABLE PERIODS.
B/ LESS THAN 0.05 PERCENT.
FOR FOOTNOTES SEE PAGE 5.

DEPARTMENT OF DEFENSE
PRIME CONTRACT AWARDS BY STATE
TABLE 2 - NET VALUE OF MILITARY PROCUREMENT ACTIONS BY DEPARTMENT ^{1/}
FISCAL YEAR 1977
(AMOUNTS IN THOUSANDS)

STATE	TOTAL ^{2/}		ARMY	NAVY	AIR FORCE	DEFENSE LOGISTICS AGENCY
	AMOUNT	PERCENT				
TOTAL U.S. ^{2/}	952,751,721		\$11,267,267	\$17,339,324	\$17,202,629	\$ 5,751,316
NOT DISTRIBUTED BY STATE ^{2/}	7,212,104		1,937,618	1,678,685	2,252,646	1,266,263
STATE TOTALS ^{2/}	45,529,537	100.0	9,309,652	15,659,609	14,950,383	4,485,073
ALABAMA	421,217	0.9	179,083	33,921	77,774	127,340
ALASKA	123,886	0.3	44,261	16,369	22,683	23,369
ARIZONA	948,282	1.2	139,351	144,809	236,549	7,739
ARKANSAS	76,985	0.2	22,273	6,218	17,663	21,956
CALIFORNIA	10,875,100	22.1	1,382,968	3,859,763	3,877,413	756,345
COLORADO	379,169	0.8	64,451	38,178	225,760	26,132
CONNECTICUT	1,974,283	4.3	236,514	791,571	606,741	53,886
DELAWARE	58,662	0.1	7,261	2,794	9,633	29,928
DISTRICT OF COLUMBIA	697,940	1.5	42,762	498,848	41,586	69,794
FLORIDA	1,866,677	2.8	276,649	283,699	439,988	54,474
GEORGIA	517,688	1.1	171,894	49,779	245,919	59,585
HAWAII	223,885	0.5	48,385	77,298	21,883	71,242
IDAH0	19,329	0	784	73	9,854	9,653
ILLINOIS	994,934	1.2	158,454	69,148	118,814	212,973
INDIANA	834,832	1.8	426,879	189,287	219,261	82,143
IOWA	288,758	0.6	76,948	18,325	76,547	113,353
KANSAS	363,265	0.8	144,122	39,878	148,253	28,284
KENTUCKY	221,461	0.5	138,346	9,599	5,386	78,668
LOUISIANA	398,651	0.9	178,684	96,483	22,287	133,187
MAINE	323,276	0.7	48,821	249,334	6,499	6,273
MARYLAND	1,892,273	2.4	135,919	442,426	322,196	98,194
MASSACHUSETTS	2,399,491	5.3	365,559	885,759	868,764	124,728
MICHIGAN	1,244,458	2.7	937,767	88,241	118,177	97,284
MINNESOTA	656,238	1.4	171,253	281,946	121,174	26,394
MISSISSIPPI	493,211	1.1	29,688	382,685	25,413	59,148
MISSOURI	2,361,878	5.2	227,296	618,168	1,476,964	29,862
MONTANA	173,731	0.4	7,717	151,761	23	14,144
NEBRASKA	74,915	0.2	39,988	866	35,968	7,518
NEVADA	27,875	0.1	1,822	12,894	13,217	438
NEW HAMPSHIRE	153,329	0.3	61,947	84,268	13,815	12,898
NEW JERSEY	1,216,613	2.7	213,962	453,462	257,965	214,667
NEW MEXICO	159,499	0.4	46,988	2,482	73,137	34,283
NEW YORK	4,388,271	9.4	227,853	2,288,648	1,898,182	388,119
NORTH CAROLINA	373,396	0.8	148,171	118,378	39,421	68,163
NORTH DAKOTA	62,533	0.1	29,856	368	18,386	7,726
OHIO	1,164,188	2.6	286,322	278,444	493,372	181,862
OKLAHOMA	292,796	0.6	49,656	48,926	181,487	93,827
OREGON	77,945	0.2	8,487	26,476	13,814	18,653
PENNSYLVANIA	1,684,889	3.6	624,251	627,711	178,186	196,759
RHODE ISLAND	129,891	0.3	18,988	93,246	1,542	13,867
SOUTH CAROLINA	175,418	0.4	38,188	72,619	17,456	54,628
SOUTH DAKOTA	13,289	0	4,464	1,133	4,786	2,899
TENNESSEE	789,718	1.6	488,412	17,967	113,731	97,297
TEXAS	2,778,379	6.1	647,852	416,838	1,243,881	464,898
UTAH	226,734	0.5	42,133	29,816	141,899	12,812
VERMONT	119,188	0.3	66,291	9,585	29,489	922
VIRGINIA	2,378,491	5.5	292,294	1,425,372	131,474	88,872
WASHINGTON	1,728,452	3.6	52,822	486,868	1,083,986	187,544
WEST VIRGINIA	91,798	0.2	9,176	41,149	6,584	34,244
WISCONSIN	416,394	0.9	132,853	138,459	61,222	98,721
WYOMING	19,429	0	1,484	1,243	2,833	13,894

^{1/} INCLUDES "OTHER DEFENSE AGENCY" AWARDS NOT INCLUDED ELSEWHERE IN THIS TABLE.
^{2/} LESS THAN 0.05 PERCENT.
FOR FOOTNOTES, SEE PAGE 5.

DEPARTMENT OF DEFENSE
PRIME CONTRACT AWARDS BY STATE
TABLE B - NET VALUE OF MILITARY PROCUREMENT ACTIONS BY FISCAL YEAR A/
FISCAL YEARS 1975, 1976 AND 1977

(AMOUNTS IN THOUSANDS)

STATE	FISCAL YEAR 1975		FISCAL YEAR 1976		FISCAL YEAR 1977	
	AMOUNT	PERCENT	AMOUNT	PERCENT	AMOUNT	PERCENT
TOTAL U.S. G/	843,355,473		844,678,867		852,753,723	
NOT DISTRIBUTED BY STATE C/	6,036,042		5,729,592		7,212,184	
STATE TOTALS D/	87,319,429	100.0	86,949,275	100.0	85,539,537	100.0
ALABAMA	418,596	1.1	418,249	1.1	421,217	0.9
ALASKA	131,818	0.4	144,754	0.4	123,866	0.3
ARIZONA	867,745	1.8	614,288	1.6	548,262	1.2
ARKANSAS	48,149	0.1	77,176	0.2	78,505	0.2
CALIFORNIA	7,987,977	21.2	6,949,116	23.0	10,878,140	22.1
COLORADO	293,883	0.8	311,334	0.8	379,169	0.8
CONNECTICUT	2,348,567	6.3	2,913,889	4.9	1,974,423	4.3
DELAWARE	38,012	0.1	36,585	0.1	58,862	0.1
DISTRICT OF COLUMBIA	824,723	1.4	411,541	1.1	697,540	1.5
FLORIDA	1,838,815	2.8	972,881	2.5	1,886,677	2.3
GEORGIA	638,885	1.7	476,917	1.2	517,688	1.1
HAWAII	298,681	0.8	363,358	0.9	223,805	0.5
IDAHO	18,184	*	16,528	*	15,925	*
ILLINOIS	493,984	1.3	474,328	1.2	559,934	1.2
INDIANA	811,782	2.2	789,238	2.6	834,832	1.8
IOWA	174,989	0.5	229,986	0.6	280,750	0.6
KANSAS	984,566	1.4	387,338	0.8	383,285	0.8
KENTUCKY	166,756	0.6	188,286	0.5	221,481	0.5
LOUISIANA	477,482	1.3	382,719	0.8	398,851	0.9
MAINE	95,911	0.1	283,758	0.7	323,276	0.7
MARYLAND	882,254	2.1	981,623	2.5	1,092,273	2.4
MASSACHUSETTS	1,778,288	4.7	1,956,145	5.8	2,395,431	5.3
MICHIGAN	766,883	2.1	965,168	2.5	1,244,458	2.7
MINNESOTA	437,986	1.2	688,523	1.8	658,238	1.4
MISSISSIPPI	972,881	2.6	934,615	2.4	493,211	1.1
MISSOURI	1,361,489	3.6	2,294,789	5.9	2,361,678	5.2
MONTANA	5,188	*	22,839	0.1	173,731	0.4
NEBRASKA	49,888	0.1	48,884	0.1	79,915	0.2
NEVADA	44,875	0.1	19,827	*	27,875	0.1
NEW HAMPSHIRE	188,934	0.5	167,441	0.4	153,329	0.3
NEW JERSEY	998,929	2.7	975,325	2.5	1,216,613	2.7
NEW MEXICO	93,612	0.3	124,941	0.3	159,999	0.4
NEW YORK	3,743,942	18.8	3,384,122	8.5	4,366,271	9.4
NORTH CAROLINA	398,752	1.1	348,948	0.9	373,588	0.8
NORTH DAKOTA	175,671	0.5	154,586	0.4	43,533	0.1
OHIO	1,813,862	2.7	921,898	2.4	1,164,184	2.6
OKLAHOMA	215,329	0.6	254,878	0.7	292,796	0.6
OREGON	58,886	0.2	51,733	0.1	77,945	0.2
PENNSYLVANIA	1,866,787	2.9	1,252,486	3.2	1,654,889	3.6
RHODE ISLAND	73,525	0.2	94,442	0.2	125,851	0.3
SOUTH CAROLINA	283,888	0.5	156,718	0.4	175,418	0.4
SOUTH DAKOTA	18,867	0.1	18,118	*	13,289	*
TENNESSEE	359,988	1.8	361,758	0.9	749,718	1.8
TEXAS	2,823,744	5.4	2,889,438	5.4	2,778,375	6.1
UTAH	148,736	0.4	149,285	0.4	226,754	0.5
VERMONT	122,862	0.3	129,234	0.3	119,188	0.3
VIRGINIA	1,288,618	3.2	1,687,898	4.1	2,838,451	4.5
WASHINGTON	1,637,812	4.4	1,289,298	3.3	1,738,452	3.8
WEST VIRGINIA	73,888	0.2	88,239	0.2	91,745	0.2
WISCONSIN	238,794	0.6	258,922	0.6	418,494	0.9
WYOMING	28,888	0.1	28,912	0.1	19,429	*

FOR FOOTNOTES, SEE PAGE 9.
* LESS THAN 0.05 PERCENT.

**DEPARTMENT OF DEFENSE
ARMY CIVIL FUNCTIONS PRIME CONTRACT AWARDS**

FLOOD CONTROL, AND RIVERS AND HARBORS WORK

DEPARTMENT OF DEFENSE
PRIME CONTRACT AWARDS BY STATE
TABLE A - NET VALUE OF CIVIL FUNCTIONS PROCUREMENT ACTIONS A/ E/
FISCAL YEARS 1974, 1975 AND 1976, AND FISCAL YEARS 1976 AND 1977 TO DATE

STATE	(AMOUNTS IN THOUSANDS)				
	FISCAL YEAR	FISCAL YEAR	FISCAL YEAR	FISCAL YEAR TO DATE <u>E/</u>	
	1974 JUL 73-JUN 74	1975 JUL 74-JUN 75	1976 JUL 75-JUN 76	1976 JUL 75-JUN 76	1977 OCT 76-SEP 77
TOTAL, U.S. <u>E/</u>	\$1,722,551 *****	\$1,143,700 *****	\$1,499,861 *****	\$1,499,061 *****	\$1,594,908 *****
NOT DISTRIBUTED BY STATE <u>C/</u>	77,827	181,414	185,467	305,467	117,168
STATE TOTALS <u>D/</u>	1,245,524 -----	1,042,294 -----	1,393,594 -----	1,393,594 -----	1,482,740 -----
ALABAMA	41,421	72,531	34,642	34,642	42,805
ALASKA	12,627	8,947	18,827	18,827	19,557
ARIZONA	4,886	392	2,729	2,729	2,244
ARKANSAS	67,165	36,487	41,236	41,236	27,923
CALIFORNIA	76,542	44,949	91,865	91,865	184,959
COLORADO	14,812	14,849	19,184	19,184	16,844
CONNECTICUT	2,341	5,815	7,153	7,153	7,806
DELAWARE	2,428	1,657	532	532	537
DISTRICT OF COLUMBIA	4,542	8,145	3,130	3,130	4,651
FLORIDA	36,369	17,763	37,962	37,962	53,427
GEORGIA	38,876	42,473	24,309	24,309	22,805
HAWAII	2,558	2,862	2,677	2,677	14,769
IDaho	22,231	28,291	21,977	21,977	12,172
ILLINOIS	58,867	43,187	49,787	49,787	26,994
INDIANA	38,519	18,827	28,554	28,554	24,652
IOWA	13,878	15,395	24,217	24,217	23,367
KANSAS	13,462	14,711	23,937	23,937	25,294
KENTUCKY	56,629	31,134	52,529	52,529	61,499
LOUISIANA	152,735	97,825	141,251	141,251	124,496
MAINE	746	888	2,322	2,322	659
MARYLAND	26,819	7,676	15,588	15,588	15,054
MASSACHUSETTS	12,193	18,873	21,528	21,528	22,231
MICHIGAN	17,262	8,524	13,453	13,453	18,543
MINNESOTA	8,881	7,485	7,488	7,488	10,722
MISSISSIPPI	32,541	28,687	39,645	39,645	63,374
MISSOURI	57,876	56,412	182,443	182,443	182,365
MONTANA	22,567	18,523	26,651	26,651	7,277
NEBRASKA	8,773	4,182	7,576	7,576	15,021
NEVADA	5,888	8	0	0	17
NEW HAMPSHIRE	338	673	5,952	5,952	445
NEW JERSEY	28,542	14,322	12,666	12,666	21,519
NEW MEXICO	14,583	18,844	3,767	3,767	11,495
NEW YORK	34,988	32,768	31,765	31,765	61,636
NORTH CAROLINA	8,478	19,174	22,895	22,895	34,786
NORTH DAKOTA	4,642	4,439	11,228	11,228	8,872
OHIO	53,965	33,388	39,872	39,872	33,410
OKLAHOMA	27,217	28,742	49,246	49,246	26,676
OREGON	35,893	38,830	52,654	52,654	32,573
PENNSYLVANIA	76,819	61,894	79,165	79,165	118,965
RHODE ISLAND	388	389	336	336	229
SOUTH CAROLINA	7,278	7,847	9,519	9,519	9,305
SOUTH DAKOTA	3,977	2,119	2,428	2,428	1,713
TENNESSEE	22,188	13,972	12,348	12,348	18,258
TEXAS	41,848	46,276	47,411	47,411	56,422
UTAH	8,591	426	173	173	268
VERMONT	283	218	641	641	379
VIRGINIA	16,883	19,888	12,431	12,431	36,518
WASHINGTON	31,197	38,281	115,379	115,379	114,138
WEST VIRGINIA	22,791	21,857	22,853	22,853	18,614
WISCONSIN	18,181	9,133	9,181	9,221	2,753
WYOMING	88	8	42	42	154

E/ COMPARABLE FISCAL PERIODS.
FOR FOOTNOTES, SEE PAGE 9.

FOOTNOTES:

a/ NOTES ON COVERAGE: It is emphasized that data on prime contracts by state do not provide any direct indication as to the state in which the actual production work is done. For the majority of contracts with manufacturers, the data reflect the location of the plant where the product will be finally processed and assembled. If processing or assembly is to be performed in more than one plant of a prime contractor, the location shown is the plant where the largest dollar amount of work will take place. Construction contracts are shown for the state where the construction is to be performed. For purchases from wholesale or other distribution firms, the location is the address of the contractor's place of business. For service contracts, the location is generally the place where the service is performed, but for transportation and communications services the home office address is frequently used.

More important is the fact that the reports refer to prime contracts only, and cannot in any way reflect the distribution of the very substantial amount of material and component fabrication and other subcontract work that may be done outside the state where final assembly or delivery takes place.

The report includes definitive contracts and funded portions of letter contracts and letters of intent, job orders, task orders, and purchase orders on industrial firms, and also includes interdepartmental purchases, made from or through other governmental agencies, such as those made through the General Services Administration. The state data include upward or downward revisions and adjustments of \$10,000 or more, such as cancellations, price changes, supplemental agreements, amendments, etc.

The estimated amounts of indefinite delivery, open-end or call-type contracts for petroleum are included in the report. Except for petroleum contracts, the report does not include indefinite delivery, open-end, or call-type contracts as such, but does include specific purchases or delivery orders of \$10,000 or more which are placed against these contracts. Also excluded from the report are project orders, that is production orders issued to Government-owned-and-operated facilities such as Navy shipyards. However, the report includes the contracts placed with industry by the Government-operated facility to complete the production order.

b/ Includes all contracts awarded for work performance in the United States. The United States includes the 50 states, the District of Columbia, U. S. possessions, the Canal Zone, the Commonwealth of Puerto Rico, the Trust Territories of the Pacific, and other areas subject to the complete sovereignty of the U. S., but does not include occupied Japanese Islands.

c/ Includes contracts of less than \$10,000, all contracts awarded for work performance in the U. S. possessions, the Commonwealth of Puerto Rico, the Trust Territories of the Pacific, and other areas subject to the complete sovereignty of the U. S., contracts which are in a classified location, that portion of intragovernmental contracts and directed procurements for foreign governments under The Foreign Military Sales Act entered into overseas, and contracts for the Civilian Health and Medical Program of the Uniformed Services, (CHAMPUS).

d/ Net value of contracts of \$10,000 or more for work in each state and the District of Columbia.

e/ Civil Functions of the Army Corps of Engineers for flood control and rivers and harbors work. Civil Functions data are shown separately, and are not included in military functions tabulations.

NOTE: Percentages may not add due to rounding.

This pamphlet may be reproduced without permission.

Issued Semiannually by
Department of Defense
Washington Headquarters Services
Directorate for Information Operations
and Reports
January 27, 1978

END

Dtjic

5-86