

AD-A151 343

PRIME CONTRACT AWARDS BY STATE FY 1976(U) WASHINGTON
HEADQUARTERS SERVICES (DOD) DC DIRECTORATE FOR
INFORMATION OPERATIONS AND REPORTS 1976 D10R/P09-76

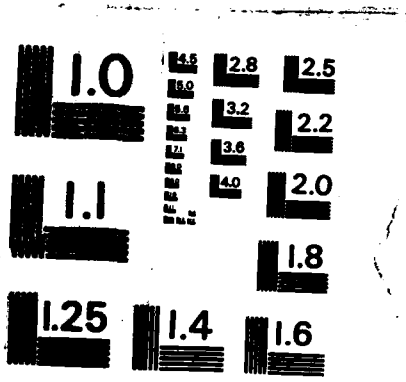
1/1

UNCLASSIFIED

F/G 15/5

NL





MICROCOPY RESOLUTION TEST CHART
NATIONAL BUREAU OF STANDARDS-1963-A

DICR/ P09-76

AD- A151343



PRIME CONTRACT AWARDS

1974-1975

FOR THE YEAR

1974-1975

DEPARTMENT OF DEFENSE
PRIME CONTRACT AWARDS BY STATE

CONTENTS

	PAGE
<u>MILITARY PRIME CONTRACT AWARDS</u>	
TABLE 1..FISCAL YEAR TO DATE AND QUARTERLY AWARDS.....	1
TABLE 2..AWARDS BY DEPARTMENT.....	2
TABLE 3..AWARDS FOR THE THREE PRECEDING FISCAL YEARS.....	3
<u>ARMY CIVIL FUNCTIONS PRIME CONTRACT AWARDS</u>	
TABLE 4..AWARDS FOR THE THREE PRECEDING FISCAL YEARS AND FISCAL YEAR TO DATE.....	4
<u>FOOTNOTES.....</u>	5

**DEPARTMENT OF DEFENSE
MILITARY PRIME CONTRACT AWARDS BY STATE**

TABLE 3 - NET VALUE OF MILITARY PROCUREMENT ACTIONS A/

FISCAL YEARS 1975 AND 1976

(AMOUNTS IN THOUSANDS)

STATE	FISCAL YEAR				THREE MONTHS PERIOD			
	1975		1976		FISCAL YEAR 1975		FISCAL YEAR 1976	
	JULY 1974-JUNE 1975	PERCENT	JULY 1975-JUNE 1976	PERCENT	APRIL-JUNE 1975	PERCENT	APRIL-JUNE 1976	PERCENT
	AMOUNT		AMOUNT		AMOUNT		AMOUNT	
TOTAL, U.S. g	843,355,473		844,878,867		612,253,426		612,004,993	
NOT DISTRIBUTED BY STATE g	6,036,042		5,729,592		3,727,345		3,733,627	
STATE TOTALS n/	37,319,429	100.0	38,949,275	100.0	18,526,081	100.0	18,291,364	100.0
ALABAMA	416,596	1.1	418,249	1.1	141,929	1.4	148,728	1.4
ALASKA	131,818	0.4	144,754	0.4	68,888	0.4	68,821	0.4
ARIZONA	667,745	1.8	618,298	1.6	164,846	1.8	92,985	0.9
ARKANSAS	48,149	0.1	77,178	0.2	16,348	0.2	23,581	0.3
CALIFORNIA	7,987,977	21.2	8,949,118	23.0	1,835,797	17.4	2,064,579	20.1
COLORADO	293,883	0.8	311,334	0.8	148,186	1.3	189,635	1.1
CONNECTICUT	2,348,567	6.3	1,913,889	4.9	761,382	7.2	478,865	4.6
DELAWARE	58,812	0.1	36,565	0.1	18,231	0.2	8,854	0.1
DISTRICT OF COLUMBIA	928,723	1.4	411,561	1.1	78,351	0.7	94,451	0.5
FLORIDA	1,838,815	2.8	972,881	2.5	335,994	3.2	212,784	2.1
GEORGIA	688,885	1.7	476,917	1.2	248,382	2.3	157,686	1.5
HAWAII	292,681	0.8	363,358	0.9	73,339	0.7	48,978	0.4
IDaho	18,184	0.0	16,528	0.0	3,835	0.0	8,538	0.1
ILLINOIS	493,964	1.3	474,328	1.2	168,314	1.5	135,832	1.3
INDIANA	811,782	2.2	785,238	2.0	214,226	2.0	223,216	2.2
IOWA	174,989	0.5	229,986	0.6	56,478	0.5	92,462	0.9
KANSAS	584,944	1.6	387,338	1.0	189,475	1.8	68,878	0.7
KENTUCKY	164,758	0.5	188,286	0.5	37,588	0.4	68,274	0.7
LOUISIANA	477,462	1.3	382,719	1.0	153,148	1.5	157,224	1.5
MAINE	59,511	0.2	283,758	0.7	24,968	0.2	22,135	0.2
MARYLAND	882,254	2.2	981,623	2.5	226,487	2.2	356,499	3.5
MASSACHUSETTS	1,778,288	4.7	1,956,145	5.0	628,136	4.1	467,562	4.5
MICHIGAN	766,863	2.1	965,168	2.5	289,638	2.8	387,326	3.8
MINNESOTA	437,566	1.2	698,533	1.8	158,698	1.5	173,211	1.7
MISSISSIPPI	972,881	2.6	934,615	2.4	544,961	5.2	83,868	0.8
MISSOURI	1,361,489	3.7	2,294,789	5.9	488,873	3.9	964,683	9.4
MONTANA	5,188	0.0	22,839	0.1	18,459	0.1	5,388	0.1
NEBRASKA	49,868	0.1	43,644	0.1	19,828	0.2	13,844	0.1
NEVADA	44,875	0.1	19,827	0.1	19,228	0.2	8,427	0.1
NEW HAMPSHIRE	188,934	0.5	167,441	0.4	52,893	0.5	47,843	0.5
NEW JERSEY	998,929	2.7	974,325	2.5	251,487	2.4	279,534	2.7
NEW MEXICO	95,612	0.3	124,941	0.3	26,312	0.3	38,933	0.3
NEW YORK	3,743,942	10.0	3,384,122	8.7	733,825	7.8	792,842	7.7
NORTH CAROLINA	398,752	1.1	348,968	0.9	93,421	0.9	98,793	0.9
NORTH DAKOTA	179,671	0.5	194,566	0.5	24,733	0.2	5,518	0.1
OHIO	1,813,862	2.7	921,898	2.4	389,879	2.9	222,836	2.2
OKLAHOMA	215,329	0.6	254,879	0.7	64,248	0.7	72,877	0.7
OREGON	58,864	0.2	51,733	0.1	22,625	0.2	18,362	0.1
PENNSYLVANIA	1,866,737	2.9	1,252,486	3.2	321,199	3.1	418,643	4.0
RHODE ISLAND	73,925	0.2	94,442	0.2	28,974	0.2	29,217	0.3
SOUTH CAROLINA	283,888	0.8	154,715	0.4	84,892	0.8	78,851	0.7
SOUTH DAKOTA	18,867	0.1	14,118	0.0	7,238	0.1	3,964	0.0
TENNESSEE	359,588	1.0	341,758	0.9	148,897	1.4	76,578	0.7
TEXAS	2,622,746	7.0	2,875,433	7.4	989,554	4.8	479,685	4.7
UTAH	148,736	0.4	145,285	0.4	56,544	0.5	65,612	0.6
VERMONT	122,962	0.3	129,254	0.3	66,677	0.4	78,777	0.8
VIRGINIA	1,284,616	3.2	1,687,658	4.1	477,962	4.9	518,182	5.0
WASHINGTON	1,637,812	4.4	1,289,258	3.3	478,454	4.9	385,818	3.8
WEST VIRGINIA	78,888	0.2	85,339	0.2	18,549	0.1	13,821	0.1
WISCONSIN	236,794	0.6	258,922	0.6	82,189	0.8	98,649	0.9
WYOMING	28,968	0.1	28,912	0.1	1,874	0.0	5,271	0.1

FOR FOOTNOTES, SEE PAGE 4.
* LESS THAN 0.05 PERCENT.

**DEPARTMENT OF DEFENSE
MILITARY PRIME CONTRACT AWARDS BY STATE**

TABLE 2 - NET VALUE OF MILITARY PROCUREMENT ACTIONS BY DEPARTMENT A/

JULY 1975-JUNE 1976

(AMOUNTS IN THOUSANDS)

STATE	TOTAL		ARMY	NAVY	AIR FORCE	DEFENSE SUPPLY AGENCY
	AMOUNT	PERCENT				
TOTAL, U.S. d/	844,678,007		8 9,987,046	818,379,297	834,358,988	8 5,152,736
NOT DISTRIBUTED BY STATE d/	5,729,592		1,535,956	3,532,332	3,505,075	1,156,429
STATE TOTALS d/	38,949,275	100.0	8,451,090	13,647,165	12,853,913	3,996,387
ALABAMA	418,299	1.1	186,394	14,288	89,888	128,577
ALASKA	144,754	0.4	98,589	19,516	44,962	33,767
ARIZONA	814,288	1.6	147,648	171,841	285,873	18,926
ARKANSAS	77,176	0.2	34,786	2,416	12,495	27,559
CALIFORNIA	8,949,818	23.0	1,245,289	3,316,894	3,738,912	655,963
COLORADO	311,334	0.8	184,347	25,314	168,588	13,145
CONNECTICUT	1,917,889	0.9	127,249	952,618	781,787	51,515
DELAWARE	36,565	0.1	4,191	1,879	6,155	19,388
DISTRICT OF COLUMBIA	411,541	1.1	87,628	247,682	33,686	42,545
FLORIDA	972,881	2.5	371,238	178,818	378,871	67,874
GEORGIA	476,917	1.2	139,798	22,195	268,231	54,781
HAWAII	343,358	0.9	145,639	53,717	16,734	147,288
IDaho	16,528	0	8,542	297	1,863	5,866
ILLINOIS	474,328	1.2	128,191	84,441	116,227	153,469
INDIANA	795,238	2.0	316,631	99,331	232,173	137,895
IOWA	279,986	0.6	65,445	27,796	76,331	59,914
KANSAS	387,338	0.9	184,958	38,887	142,845	29,528
KENTUCKY	188,284	0.5	108,268	7,977	7,333	64,788
LOUISIANA	382,719	0.8	92,789	58,811	21,271	129,928
MAINE	283,758	0.7	18,925	268,585	4,948	7,771
MARYLAND	981,623	2.5	131,388	546,444	245,172	38,787
MASSACHUSETTS	1,954,145	0.9	539,919	672,949	748,263	93,414
MICHIGAN	965,168	2.5	784,636	41,858	61,974	78,692
MINNESOTA	698,333	1.8	188,184	478,188	88,951	27,698
MISSISSIPPI	934,815	2.4	4,262	848,216	28,563	64,574
MISSOURI	2,294,789	5.9	248,778	198,581	1,833,277	22,153
MONTANA	22,839	0.1	7,658	75	12,894	2,252
NEBRASKA	43,664	0.1	11,814	432	23,885	8,413
NEVADA	19,827	0.1	2,943	7,381	7,489	1,894
NEW HAMPSHIRE	147,441	0.4	19,553	86,888	22,364	18,596
NEW JERSEY	975,325	2.5	195,877	423,161	167,865	188,822
NEW MEXICO	124,941	0.3	44,747	3,984	52,817	24,273
NEW YORK	3,384,122	8.5	992,275	1,884,431	592,656	233,768
NORTH CAROLINA	346,968	0.9	114,792	213,821	32,697	85,658
NORTH DAKOTA	154,566	0.4	42,478	284	187,762	4,842
OHIO	921,858	2.4	171,481	242,781	425,181	81,695
OKLAHOMA	254,878	0.7	77,377	11,624	95,798	78,879
OREGON	91,723	0.1	5,716	24,634	8,788	12,683
PENNSYLVANIA	1,252,486	1.2	912,777	351,254	148,282	248,173
RHODE ISLAND	94,442	0.2	8,944	74,481	1,238	9,787
SOUTH CAROLINA	154,715	0.4	31,711	92,958	17,942	54,912
SOUTH DAKOTA	14,118	0	8,226	413	3,387	2,884
TENNESSEE	341,758	0.9	157,793	17,872	84,881	81,584
TEXAS	2,495,438	5.4	686,881	449,442	557,885	485,282
UTAH	146,285	0.4	25,292	15,349	95,254	9,318
VERMONT	129,294	0.3	47,962	11,218	68,963	1,891
VIRGINIA	1,887,658	0.1	284,726	1,177,988	78,899	68,533
WASHINGTON	1,289,258	3.3	85,878	378,877	784,268	49,835
WEST VIRGINIA	85,389	0.2	28,194	17,722	27,212	27,211
WISCONSIN	258,922	0.6	82,947	63,633	31,866	73,276
WYOMING	58,912	0.1	1,462	159	2,818	17,281

FOR FOOTNOTES, SEE PAGE 5.
* LESS THAN 0.05 PERCENT.

**DEPARTMENT OF DEFENSE
MILITARY PRIME CONTRACT AWARDS BY STATE**

TABLE 3 - NET VALUE OF MILITARY PROCUREMENT ACTIONS BY FISCAL YEAR A/

FISCAL YEARS 1973, 1974 AND 1975

(AMOUNTS IN THOUSANDS)

STATE	FISCAL YEAR 1973		FISCAL YEAR 1974		FISCAL YEAR 1975	
	AMOUNT	PERCENT	AMOUNT	PERCENT	AMOUNT	PERCENT
TOTAL, U.S. B/	324,743,223		327,763,429		343,355,471	
NOT DISTRIBUTED BY STATE C/	4,676,248		5,340,403		6,036,042	
STATE TOTALS B/	30,065,075	100.0	32,623,087	100.0	37,319,429	100.0
ALABAMA	293,883	1.0	336,377	1.0	416,596	1.1
ALASKA	127,170	0.4	134,733	0.4	131,818	0.4
ARIZONA	390,014	1.3	479,301	1.5	667,745	1.8
ARKANSAS	62,448	0.2	44,211	0.1	48,149	0.1
CALIFORNIA	6,234,901	20.7	6,927,273	21.2	7,907,977	21.2
COLORADO	237,573	0.8	239,074	0.7	293,803	0.8
CONNECTICUT	1,004,462	3.3	2,643,470	8.1	2,348,367	6.3
DELAWARE	66,236	0.2	43,980	0.1	50,012	0.1
DISTRICT OF COLUMBIA	520,592	1.7	394,421	1.2	528,723	1.4
FLORIDA	761,959	2.6	790,406	2.4	1,030,015	2.8
GEORGIA	437,955	1.5	376,871	1.2	630,005	1.7
HAWAII	155,393	0.5	183,447	0.6	298,601	0.8
IDAHO	9,731	*	6,336	*	10,104	*
ILLINOIS	476,141	1.6	456,339	1.4	493,964	1.3
INDIANA	640,997	2.1	747,968	2.3	811,702	2.2
IOWA	153,332	0.5	157,909	0.5	174,989	0.5
KANSAS	322,926	1.1	296,105	0.9	504,566	1.4
KENTUCKY	104,336	0.4	115,492	0.4	166,756	0.4
LOUISIANA	208,092	0.7	276,686	0.8	477,482	1.3
MAINE	44,832	0.1	128,011	0.4	55,511	0.1
MARYLAND	685,407	2.3	743,098	2.3	802,254	2.1
MASSACHUSETTS	1,589,178	5.3	1,781,370	5.5	1,770,288	4.7
MICHIGAN	493,952	1.6	925,012	2.8	766,063	2.1
MINNESOTA	377,185	1.3	408,394	1.3	437,346	1.2
MISSISSIPPI	395,905	1.3	899,707	2.8	972,801	2.6
MISSOURI	1,293,681	3.9	1,372,585	4.2	1,361,409	3.6
MONTANA	17,662	0.1	84,721	0.3	5,100	*
NEBRASKA	88,752	0.3	34,190	0.1	49,060	0.1
NEVADA	15,442	0.1	17,323	0.1	44,875	0.1
NEW HAMPSHIRE	157,029	0.5	100,348	0.3	188,920	0.5
NEW JERSEY	1,042,565	3.5	967,941	3.0	990,929	2.7
NEW MEXICO	104,293	0.4	102,598	0.3	93,612	0.3
NEW YORK	3,476,186	11.6	2,784,894	8.5	3,743,942	10.0
NORTH CAROLINA	355,370	1.2	350,264	1.1	398,752	1.1
NORTH DAKOTA	62,556	0.2	92,044	0.3	175,671	0.5
OHIO	932,845	3.2	994,037	3.0	1,013,876	2.7
OKLAHOMA	147,493	0.5	170,083	0.5	215,329	0.6
OREGON	41,874	0.1	58,032	0.2	58,866	0.2
PENNSYLVANIA	1,241,030	4.1	1,307,002	4.0	1,066,737	2.9
RHODE ISLAND	86,455	0.3	98,130	0.3	73,525	0.2
SOUTH CAROLINA	131,739	0.4	131,691	0.4	203,800	0.5
SOUTH DAKOTA	20,594	0.1	14,145	*	18,867	0.1
TENNESSEE	423,606	1.4	129,000	0.4	359,580	1.0
TEXAS	2,232,444	7.4	1,913,820	5.9	2,023,746	5.4
UTAH	157,102	0.5	293,277	0.9	140,736	0.4
VERMONT	35,785	0.1	58,127	0.2	122,962	0.3
VIRGINIA	762,910	2.6	953,110	2.9	1,206,616	3.2
WASHINGTON	1,090,957	3.5	836,671	2.6	1,637,012	4.4
WEST VIRGINIA	87,468	0.3	36,472	0.1	75,888	0.2
WISCONSIN	298,824	1.0	251,365	0.8	236,794	0.6
WYOMING	116,199	0.4	36,488	0.1	28,968	0.1

PERCENTAGES MAY NOT ADD DUE TO ROUNDING.
FOR FOOTNOTES, SEE PAGE 5.
* LESS THAN 0.05 PERCENT.
B/ REVISED.

**DEPARTMENT OF DEFENSE
ARMY CIVIL FUNCTIONS PRIME CONTRACT AWARDS**

FLOOD CONTROL, AND RIVERS AND HARBORS WORK

**DEPARTMENT OF DEFENSE
ARMY CIVIL FUNCTIONS
PRIME CONTRACT AWARDS BY STATE**

**TABLE 4 - NET VALUE OF ARMY CIVIL FUNCTIONS PROCUREMENT ACTIONS *A*, *B*
FISCAL YEARS 1973, 1974, 1975, AND 1976**

(AMOUNTS IN THOUSANDS)

STATE	FISCAL YEAR	FISCAL YEAR	FISCAL YEAR	FISCAL YEAR TO DATE	
	1973	1974	1975	1975	1976
	JUL 72-JUN 73	JUL 73-JUN 74	JUL 74-JUN 75	JUL 74-JUN 75	JUL 75-JUN 76
TOTAL, U.S. <i>a</i>	91,878,801	91,322,951	91,143,788	91,143,788	91,499,861
NOT DISTRIBUTED BY STATE <i>a</i>	88,854	77,827	101,414	101,414	105,467
STATE TOTALS <i>a</i>	1,789,229	1,245,524	1,842,294	1,842,294	1,393,594
ALABAMA	48,765	41,421	72,531	72,531	34,642
ALASKA	9,118	12,627	8,947	8,947	18,827
ARIZONA	8,295	4,886	392	392	2,729
ARKANSAS	47,925	47,165	36,487	36,487	41,236
CALIFORNIA	136,788	76,942	44,949	44,949	91,865
COLORADO	32,786	14,812	14,849	14,849	19,184
CONNECTICUT	3,733	2,341	5,815	5,815	7,153
DELAWARE	3,456	2,428	1,657	1,657	532
DISTRICT OF COLUMBIA	26,193	4,942	8,145	8,145	3,138
FLORIDA	57,838	36,369	17,763	17,763	37,962
GEORGIA	51,816	38,876	42,473	42,473	24,389
HAWAII	738	2,558	2,862	2,862	2,677
IDaho	25,737	22,231	28,291	28,291	21,977
ILLINOIS	52,866	58,867	43,187	43,187	49,787
INDIANA	42,849	38,515	18,827	18,827	28,554
IOWA	52,869	13,878	15,395	15,395	24,217
KANSAS	49,124	13,462	14,711	14,711	23,937
KENTUCKY	35,935	56,629	31,134	31,134	52,529
LOUISIANA	79,445	152,735	97,825	97,825	141,251
MARYLAND	797	746	888	888	2,322
MASSACHUSETTS	18,557	26,819	7,676	7,676	15,588
MICHIGAN	45,119	12,193	18,873	18,873	21,528
MINNESOTA	59,283	17,262	6,524	6,524	13,453
MISSISSIPPI	32,326	8,881	7,485	7,485	7,488
MISSOURI	17,737	32,541	26,687	26,687	39,645
MONTECALM	95,592	57,878	56,412	56,412	182,443
NEBRASKA	14,788	22,567	18,523	18,523	26,651
NEVADA	8,481	6,773	4,182	4,182	7,578
NEW HAMPSHIRE	357	5,888	8	8	8
NEW JERSEY	228	338	673	673	5,552
NEW MEXICO	22,925	28,942	14,322	14,322	12,666
NEW YORK	19,885	14,583	18,844	18,844	3,767
NORTH CAROLINA	49,782	34,988	32,768	32,768	31,765
NORTH DAKOTA	31,759	8,478	19,174	19,174	22,895
OHIO	4,887	4,642	4,639	4,639	11,228
OKLAHOMA	78,362	53,965	33,388	33,388	39,872
OREGON	35,829	27,217	28,742	28,742	49,246
PENNSYLVANIA	14,852	33,893	39,838	39,838	52,854
RHODE ISLAND	172,796	76,819	61,894	61,894	79,165
SOUTH CAROLINA	1,722	388	389	389	336
SOUTH DAKOTA	2,897	7,278	7,847	7,847	9,519
TENNESSEE	5,522	8,877	2,119	2,119	2,428
TEXAS	49,813	22,188	13,972	13,972	12,348
UTAH	81,611	41,848	46,276	46,276	47,411
VERMONT	1,338	8,551	426	426	173
VIRGINIA	386	283	218	218	641
WASHINGTON	37,412	18,863	19,688	19,688	12,431
WEST VIRGINIA	75,765	31,197	38,281	38,281	115,379
WISCONSIN	24,971	22,791	31,357	31,357	22,853
WYOMING	22,523	18,181	9,133	9,133	9,221
	199	88	8	8	42

FOR FOOTNOTES, SEE PAGE 9.

FOOTNOTES:

a/ NOTES ON COVERAGE: It is emphasized that data on prime contracts by state do not provide any direct indication as to the state in which the actual production work is done. For the majority of contracts with manufacturers, the data reflect the location of the plant where the product will be finally processed and assembled. If processing or assembly is to be performed in more than one plant of a prime contractor, the location shown is the plant where the largest dollar amount of work will take place. Construction contracts are shown for the state where the construction is to be performed. For purchases from wholesale or other distribution firms, the location is the address of the contractor's place of business. For service contracts, the location is generally the place where the service is performed, but for transportation and communications services the home office address is frequently used.

More important is the fact that the reports refer to prime contracts only, and cannot in any way reflect the distribution of the very substantial amount of material and component fabrication and other subcontract work that may be done outside the state where final assembly or delivery takes place.

The report includes definitive contracts and funded portions of letter contracts and letters of intent, job orders, task orders, and purchase orders on industrial firms, and also includes interdepartmental purchases, made from or through other governmental agencies, such as those made through the General Services Administration. The state data include upward or downward revisions and adjustments of \$10,000 or more, such as cancellations, price changes, supplemental agreements, amendments, etc.

The estimated amounts of indefinite delivery, open-end or call-type contracts for petroleum are included in the report. Except for petroleum contracts, the report does not include indefinite delivery, open-end, or call-type contracts as such, but does include specific purchases or delivery orders of \$10,000 or more which are placed against these contracts. Also excluded from the report are project orders, that is production orders issued to Government-owned-and-operated facilities such as Navy shipyards. However, the report includes the contracts placed with industry by the Government-operated facility to complete the production order.

b/ Includes all contracts awarded for work performance in the United States. The United States includes the 50 states, the District of Columbia, U. S. possessions, the Canal Zone, the Commonwealth of Puerto Rico, the Trust Territories of the Pacific, and other areas subject to the complete sovereignty of the U. S., but does not include occupied Japanese Islands.

c/ Includes contracts of less than \$10,000, all contracts awarded for work performance in the U. S. possessions, the Commonwealth of Puerto Rico, the Trust Territories of the Pacific, and other areas subject to the complete sovereignty of the U. S., contracts which are in a classified location, that portion of intragovernmental contracts and directed procurements for foreign governments under The Foreign Military Sales Act entered into overseas, and contracts for the Civilian Health and Medical Program of the Uniformed Services (CHAMPUS).

d/ Net value of contracts of \$10,000 or more for work in each state and the District of Columbia.

e/ Civil Functions of the Army Corps of Engineers for flood control and rivers and harbors work. Civil Functions data are shown separately, and are not included in military functions tabulations.

NOTE: Percentages may not add due to rounding.

This pamphlet may be reproduced without permission.

Issued Semiannually by
Department of Defense
OASD(Comptroller)
Directorate for Information Operations
and Control
September 3, 1976

EWIND

Dtjic

5-86