

AD-A151 193

CIVILIAN MANPOWER STATISTICS, MARCH, FY-84.
WASHINGTON HEADQUARTERS SERVICE (DOD) DIR FOR INFO
OP & RPTS. MAR 84. DIOR/M04-84/06

111

UNCLASSIFIED

F/G 5/9

N/L

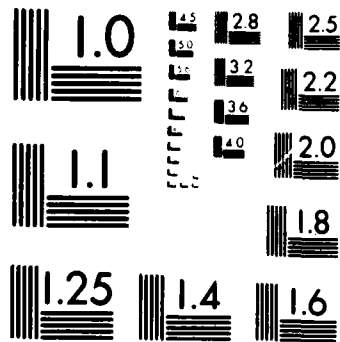
1 OF 1
AD-A151 193



END
FILMED
11 04 85

1 OF 1

AD-A151 193



MICROCOPY RESOLUTION TEST CHART
NATIONAL BUREAU OF STANDARDS 1963 A

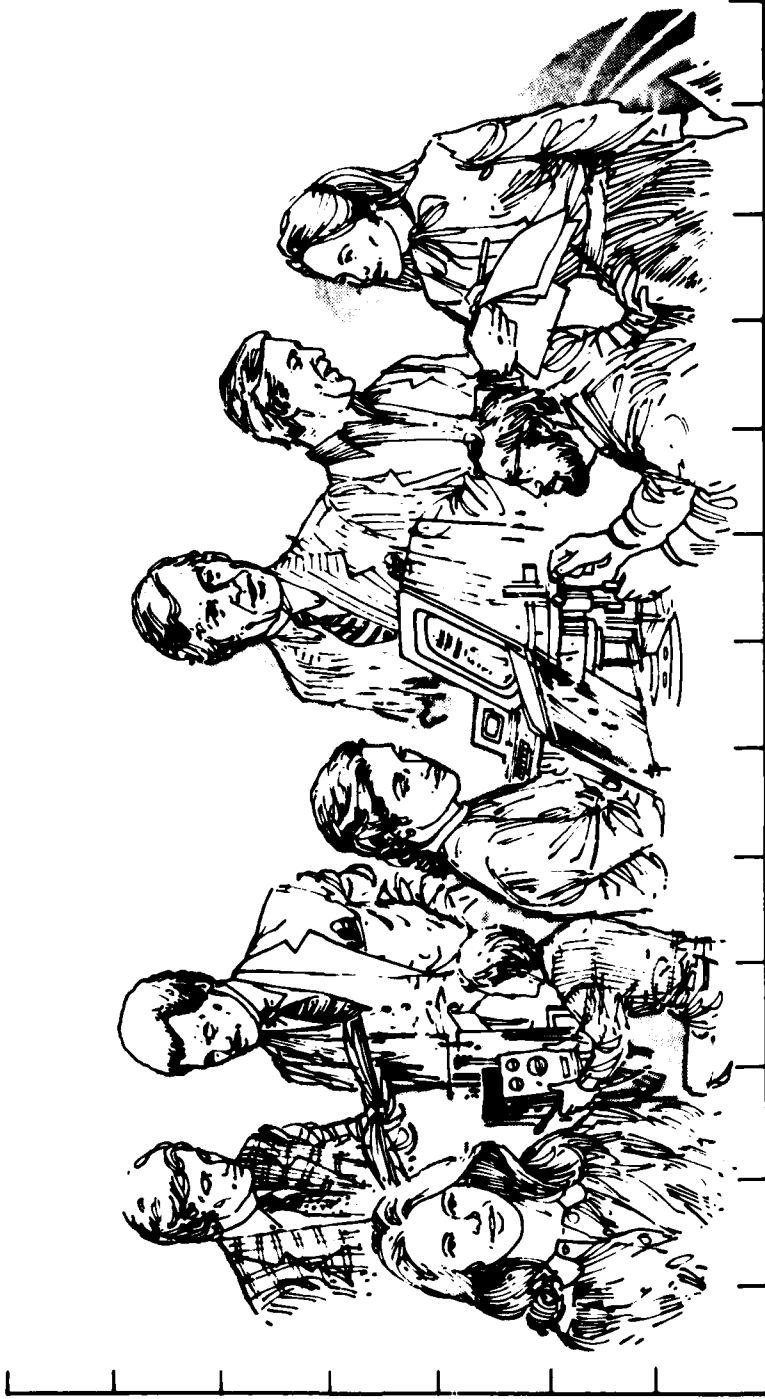
**THIS REPORT IS UNCLASSIFIED AND
ITS DISTRIBUTION IS UNLIMITED**



Department of Defense

CIVILIAN MANPOWER STATISTICS

MARCH 1984



Department of Defense

Civilian Manpower Statistics

March 1984

Issued Monthly by

Washington Headquarters Services
Directorate for Information
Operations and Reports

F O R E W O R D

Civilian Manpower Statistics (CMS) is published monthly by the Office of the Secretary of Defense, Washington Headquarters Services, Directorate for Information Operations and Reports (MHS/DIOR).

CMS provides statistical information on the civilian work force of the Department of Defense (DDO), with the exception of personnel of the National Security Agency and personnel paid from non-appropriated funds. It is produced primarily from a computerized data base developed and maintained by MHS/DIOR from monthly information provided to the Office of Personnel Management on SF 113-A, Monthly Report of Federal Civilian Employment.

This report is approved for public release at cost: *distribution unlimited*. However, all requests for this publication and DDO-wide data contained therein, should be referred to MHS/DIOR or cognizant offices in the Office of the Secretary of Defense. Requests for additional copies, should be addressed to the Director for Information Operations and Reports, Washington Headquarters Services, Room 1C535, The Pentagon, Washington, DC 20301. (When ordering cite publication number M04.)

T A B L E O F C O N T E N T S

<u>Table</u>		<u>Page</u>
1	DOD Civilian Employment, by Function and Employment Status, According to Defense Component: March 31, 1984	1
2	Trends in DOD Civilian Employment Subject to OMB Ceiling, by Function, Employment Status, and Defense Component	2
3	DOD Direct Hire Civilian Personnel Subject to OMB Ceiling, by Function and Defense Component	3
4	DOD Direct and Indirect Hire Civilian Personnel, by Component (Excluding the Military Departments), According to Type: March 31, 1984	4
5	DOD Direct Hire Civilian Personnel, by Type, According to Defense Component: March 31, 1984	5
6	DOD Civilian Personnel, by Location and Type, According to Defense Component: March 31, 1984	6
7	DOD Indirect Hire Civilian Personnel, by Country, According to Defense Component: March 31, 1984	7
	Glossary	8

NOTE: 1) Table 4 has been revised to include both DoD Direct and Indirect Hire Civilian Personnel. Military data previously contained in this table are now published in DoD publication Military Manpower Statistics.

2) Civilian manpower accession and separation rate data for direct hire personnel, previously published as Table 8, have been deleted.

TAB'E 1

DOD Civilian Employment, by Function and Employment Status,
According to Defense Component. March 31, 1984

FUNCTION/EMPLOYMENT STATUS	TOTAL a/ DOD	ARMY	NAVY	b/ -	AIR FORCE	OTHER DEFENSE ACTIVITIES c/ -
<u>MILITARY FUNCTIONS</u>						
OMB Ceiling Employment	1,089,865	402,751	344,879	-	256,667	85,568
Direct Hire	1,005,060	343,676	334,229	-	243,481	83,674
Indirect Hire	84,805	59,075	10,650	-	13,186	1,894
Total Employment	1,100,637	405,822	349,581	-	258,506	86,728
Direct Hire	1,015,832	346,747	338,931	-	245,320	84,834
Indirect Hire	84,805	59,075	10,650	-	13,186	1,894
<u>CIVIL FUNCTIONS (ALL DIRECT HIRE)</u>						
OMB Ceiling Employment	28,775	28,772	-	-	3	-
Total Employment	29,878	29,875	-	-	3	-
<u>TOTAL MILITARY AND CIVIL FUNCTIONS</u>						
OMB Ceiling Employment	1,118,640	431,523	344,879	-	256,670	85,568
Direct Hire	1,033,835	372,448	334,229	-	243,484	83,674
Indirect Hire	84,805	59,075	10,650	-	13,186	1,894
Total Employment	1,130,515	435,697	349,581	-	258,509	86,728
Direct Hire	1,045,710	376,622	338,931	-	245,323	84,834
Indirect Hire	84,805	59,075	10,650	-	13,186	1,894

a/ Included in Total Employment but excluded from Office of Management and Budget (OMB) Ceiling Employment are employees exempt from OMB ceiling control. Refer to Office of Personnel Management Federal Personnel Manual System Supplement 298-2, Subchapter 53, for a delineation of employment exempt from ceiling control.
 b/ Includes Marine Corps civilian personnel.
 c/ See the Glossary for a list of the Other Defense Activities.

TABLE 2

Trends in DOD Civilian Employment Subject to OMB Ceiling, by Function, Employment Status, and Defense Component

FUNCTION/COMPONENT/ EMPLOYMENT STATUS	END STRENGTHS, LAST 4 FISCAL YEARS				LAST 2 MONTHS	
	30 SEP 80	30 SEP 81	30 SEP 82	30 SEP 83	29 FEB 84	31 MAR 84
<u>MILITARY FUNCTIONS</u>						
<u>DIRECT HIRE</u> ^{a/}	990,356	1,019,466	1,029,854	1,067,824	1,087,774	1,089,865
<u>INDIRECT HIRE</u> ^{b/}	915,786	939,942	947,061	983,644	1,003,207	1,005,060
Army	74,570	79,524	82,793	84,180	84,567	84,805
Direct Hire	360,508	372,111	379,316	392,346	401,557	402,751
Indirect Hire	311,795	318,278	322,057	333,722	342,586	343,676
Navy	48,713	53,833	57,259	58,624	58,991	59,075
Direct Hire	308,715	320,858	319,554	339,552	344,281	344,879
Indirect Hire	297,984	310,123	308,885	328,907	333,690	334,229
Air Force	10,731	10,735	10,669	10,645	10,591	10,650
Direct Hire	244,342	246,165	248,508	252,330	256,549	256,667
Indirect Hire	230,938	232,933	235,456	239,367	243,369	243,481
Other Defense Activities	13,404	13,232	13,052	12,963	13,180	13,186
Direct Hire	76,791	80,332	82,476	83,596	85,367	85,568
Indirect Hire	75,069	78,608	80,663	81,648	83,562	83,674
CIVIL FUNCTIONS ^{a/}	1,722	1,724	1,813	1,948	1,805	1,894
<u>ACT. DIRECT HIRE</u> ^{a/}	32,611	31,800	31,573	32,823	28,495	28,775
Army	32,608	31,796	31,569	32,819	28,492	28,772
Air Force	3	4	4	4	3	3
<u>TOTAL MILITARY AND CIVIL FUNCTIONS</u>	1,022,967	1,051,266	1,061,427	1,100,647	1,116,269	1,118,640
<u>Direct Hire</u> ^{a/}	948,397	971,742	978,634	1,016,467	1,031,702	1,033,835
<u>Indirect Hire</u> ^{b/}	74,570	79,524	82,793	84,180	84,567	84,805

a/ As reported officially to the Office of Personnel Management.

b/ Foreign Nationals supporting U.S. Military Forces overseas under contracts or agreements with foreign governments.

TABLE 3

DOD Direct Hire Civilian Personnel Subject to OMB Ceiling,
by Function and Defense Component

FUNCTION/COMPONENT	TOTAL EMPLOYMENT			FULL-TIME WITH PERMANENT APPOINTMENTS		
	29 FEB 84	31 MAR 84	PROGRAMMED STRENGTH 30 SEP 84	29 FEB 84	31 MAR 84	PROGRAMMED STRENGTH ^{a/} 30 SEP 84
<u>MILITARY FUNCTIONS</u>	<u>1,003,207</u>	<u>1,005,060</u>		<u>889,167</u>	<u>891,058</u>	
Army	342,586	343,676		293,543	294,468	
Navy	333,690	334,229		296,175	296,883	
Air Force	243,369	243,481		222,590	222,642	
OSD & Related Activities ^{b/}	3,606	3,578		3,394	3,378	
Defense Audiovisual Agency	256	252		223	219	
Defense Communications Agency	1,695	1,700		1,624	1,628	
Defense Contract Audit Agency	3,783	3,792		3,726	3,736	
Defense Intelligence Agency	2,928	2,935		2,637	2,654	
Defense Investigative Service	3,302	3,288		3,283	3,262	
Defense Logistics Agency	46,549	46,689		44,629	44,791	
Defense Mapping Agency	8,872	8,872		8,719	8,719	
Defense Nuclear Agency	675	673		625	626	
Department of Defense						
Dependents Schools	11,167	11,167		7,370	7,425	
Uniformed Services University of the Health Sciences	729	728		629	627	
<u>CIVIL FUNCTIONS</u>	<u>28,495</u>	<u>28,775</u>		<u>26,016</u>	<u>26,330</u>	
Army	28,492	28,772		26,013	26,327	
Air Force	3	3		3	3	
<u>TOTAL MILITARY AND CIVIL FUNCTIONS</u>	<u>1,031,702</u>	<u>1,033,835</u>		<u>915,183</u>	<u>917,388</u>	

a/ Not under ceiling control in FY 1984

b/ See the Glossary for a list of OSD and Related Activities.

TABLE 4

000 Direct and Indirect Hire Civilian Personnel, by Component (Excluding the Military Departments), According to Type: March 31, 1984

DEFENSE COMPONENT	TOTAL	DIRECT HIRE CIVILIANS ^{a/}	INDIRECT HIRE CIVILIANS
<u>TOTALS</u>	<u>86,728</u>	<u>84,834</u>	<u>1,894</u>
OSD and Related Activities ^{b/}	3,612	3,599	13
Defense Audiovisual Agency	260	260	-
Defense Communications Agency	1,776	1,766	10
Defense Contract Audit Agency	3,829	3,823	6
Defense Intelligence Agency	2,937	2,937	-
Defense Investigative Service	3,328	3,328	-
Defense Logistics Agency	48,465	47,569	896
Defense Mapping Agency	8,962	8,961	1
Defense Nuclear Agency	682	682	-
Department of Defense Dependents Schools	12,135	11,167	968
Uniformed Services University of the Health Sciences	742	742	-

a/ Includes personnel not subject to Office of Management and Budget (OMB) ceiling control.

b/ See the Glossary for a list of OSD and Related Activities.

TABLE 5

DOD Direct Hire Civilian Personnel, by Type,
According to Defense Component: March 31, 1984

TYPE OF PERSONNEL	TOTAL DOD	ARMY	NAVY	AIR FORCE	OTHER DEFENSE ACTIVITIES
TOTAL	<u>1,045,710</u>	<u>376,622</u>	<u>338,931</u>	<u>245,323</u>	<u>84,834</u>
BY STATUS					
Full-Time	1,013,974	363,386	331,434	238,468	80,686
Part-Time	26,832	10,771	7,013	5,624	3,424
Intermittent	4,904	2,465	484	1,231	724
BY CAREER SERVICE CATEGORY					
Competitive	869,316	301,682	296,549	204,300	66,785
Excepted and SES	176,394	74,940	42,382	41,023	18,049
BY TYPE OF APPOINTMENT					
Permanent	929,466	326,434	299,527	225,574	77,931
Temporary/Indefinite	116,244	50,188	39,404	19,749	6,903
BY CITIZENSHIP					
U.S. Citizens	1,004,214	360,042	321,988	238,050	84,134
Non-Citizens	41,496	16,580	16,943	7,273	700
BY LABOR CATEGORY					
Salaries	687,825	262,293	195,518	155,914	74,100
Wage Board	357,885	114,329	143,413	89,409	10,734

a/ Includes personnel not subject to Office of Management and Budget (OMB) ceiling control.

b/ See the Glossary for a list of the Other Defense Activities.

TABLE 6

DOD Direct Hire Civilian Personnel, by Location and Type, ^{a/}
According to Defense Component: March 31, 1984

LOCATION/TYPE OF PERSONNEL	TOTAL DOD	ARMY	NAVY	AIR FORCE	OTHER DEFENSE ACTIVITIES ^{b/}
<u>WORLDWIDE TOTAL</u>	<u>1,045,710</u>	<u>376,622</u>	<u>338,931</u>	<u>245,323</u>	<u>84,834</u>
<u>UNITED STATES</u>	<u>951,168</u>	<u>333,332</u>	<u>314,656</u>	<u>230,490</u>	<u>72,690</u>
By Location ^{c/}					
Washington, D.C., SMSA	86,954	28,626	36,650	6,294	15,384
Remainder of U.S.	864,214	304,706	278,006	224,196	57,306
By Labor Category					
Salaried	629,623	239,553	185,496	142,461	62,113
Wage Board	321,545	93,779	129,160	88,029	10,577
By Citizenship					
U.S. Citizens	950,518	332,947	314,467	230,457	72,647
Non-Citizens	650	385	189	33	43
<u>U.S. TERRITORIES</u>	<u>7,132</u>	<u>1,094</u>	<u>4,589</u>	<u>1,398</u>	<u>51</u>
By Labor Category					
Salaried	3,481	741	1,925	775	40
Wage Board	3,651	353	2,664	623	11
By Citizenship					
U.S. Citizens	7,033	1,092	4,492	1,398	51
Non-Citizens	99	2	97	-	-
<u>FOREIGN COUNTRIES</u>	<u>87,410</u>	<u>42,196</u>	<u>19,686</u>	<u>13,435</u>	<u>12,093</u>
By Labor Category					
Salaried	54,721	21,999	8,097	12,678	11,947
Wage Board	32,689	20,197	11,589	757	146
By Citizenship					
U.S. Citizens	46,663	26,071	029	6,195	11,436
Non-Citizens	40,747	16,125	557	7,240	657

^{a/} Includes personnel not subject to Office of Management and Budget (OMB) ceiling control.

^{b/} See the Glossary for a list of the other Defense Activities.

^{c/} The Washington, D.C., Standard Metropolitan Statistical Area (SMSA) consists of the District of Columbia; Montgomery, Prince Georges, Charles, Calvert, and Frederick counties in Maryland; Alexandria, Fairfax, Falls Church, Manassas and Manassas Park cities, and Arlington, Fairfax, Loudoun, Prince William and Stafford counties in Virginia.

TAB F 7

DOD Indirect Hire Civilian Personnel, by Country,
According to Defense Component: March 31, 1984

COUNTRY	TOTAL DOD	ARMY	NAVY	AIR FORCE	OTHER DEFENSE ACTIVITIES ^{a/}
<u>TOTAL</u>	<u>84,805</u>	<u>59,075</u>	<u>10,650</u>	<u>13,186</u>	<u>1,894</u>
Belgium	620	598	-	2	20
Germany	58,909	51,537	20	5,954	1,398
Greece	605	15	132	439	19
Guam	4	-	4	-	-
Italy	1	-	1	-	-
Japan	17,481	3,402	9,273	4,565	241
Korea	3,267	3,267	-	-	-
Netherlands	352	256	-	75	21
Philippines	7	-	6	-	1
Spain	2,076	-	1,146	843	87
United Kingdom	1,483	-	68	1,308	107

a/ See the Glossary for a list of the Other Defense Activities.

G L O S S A R Y

Civil Functions. Functions primarily associated with the Civil Works program of the Army Corps of Engineers. This program encompasses planning, programming, designing, constructing, and operating Federal water resource projects for navigation, flood control, hydroelectric power, water supply, recreation, and related activities. Civil Functions also includes cemeterial workers (Army) and several conservation management employees (Air Force).

Competitive Service. All civil service positions in the Executive Branch, except:

1. Positions which are specifically exempted from the Competitive Service by or under statute;
2. Positions to which appointments are made by nomination for confirmation by the Senate, unless the Senate otherwise directs or when specifically included in the Competitive Service by statute;
3. Positions in the Senior Executive Service.

Also includes civil service positions not in the Executive Branch which are specifically included in the Competitive Service by statute.

Direct Hire Civilians. Employees hired directly by an agency of Department of Defense. Included are foreign nationals hired by Department of Defense to support Department of Defense activities in their home countries.

DOD. Department of Defense.

Excepted Service. All positions in the Executive Branch of the Federal government (except Senior Executive Service positions) which are specifically exempted from the Competitive Service by or pursuant to a statute, the President, or the Office of Personnel Management.

Full-Time Employees. Employees who are regularly scheduled to work the number of hours and days in the administrative workweek for their employment group or class. (Usually 5 days of 8 hours each.)

Indirect Hire Civilians. Foreign nationals assigned to support U.S. forces through contracts or agreements with foreign governments (or agencies thereof). These personnel are employees of the foreign governments involved.

Intermittent Employees. Employees who are employed with no prescheduled tour of duty (i.e., employed on an irregular or occasional basis).

Military Functions. Activities normally associated with the uniformed services.

OMB Ceiling Employment. Employees subject to Office of Management and Budget (OMB) ceilings established to administer Presidential employment ceiling limitations. Refer to Office of Personnel Management Federal Personnel Manual System Supplement 298-2, Subchapter 53, for a delineation of employment exempt from ceiling control.

OSN and Related Activities.

American Forces Information Service (AFIS)
Civilian Health and Medical Program
of the Uniformed Services (CHAMPUS)
Defense Advanced Research Projects Agency (DARPA)
Defense Legal Services (DLS)
Defense Security Assistance Agency (DSAA)
Office of Economic Adjustment (OEA)
Office of the Secretary of Defense (OSD) and
Organization of the Joint Chiefs of Staff (OJCS)
Tri-Service Medical Information System (TRIMIS)
U.S. Court of Military Appeals (USCMA)
Washington Headquarters Services (WHS)

Other Defense Activities.

Defense Audiovisual Agency (DAVA)
Defense Communications Agency (DCA)
Defense Contract Audit Agency (DCAA)
Defense Intelligence Agency (DIA)
Defense Investigative Service (DIS)
Defense Logistics Agency (DLA)
Defense Mapping Agency (DMA)
Defense Nuclear Agency (DNA)
Department of Defense Dependents Schools (DDDS)
Uniformed Services University of the
Health Sciences (USUHS)

Part-Time Employees. Employees who are regularly scheduled for a prearranged tour of duty which is less than the specified number of hours or days worked by full-time employees in the same employment group or class.

Permanent Appointments. Permanent appointments are defined within each type of service as follows:

1. Competitive Service - Employees serving under career appointments who are serving or who have completed their initial appointment probation or who are not required to serve an initial appointment probation. Also includes employees with career-conditional appointments.
2. Excepted Service - Employees whose appointments carry no restrictions or conditions, such as conditional appointments, indefinite or specific time limitations, or trial periods. Based on tenure, can include employees serving trial periods or those whose tenure is equivalent to career-conditional in the Competitive Service.

3. Senior Executive Service (SES) - All SES employees except those serving under "limited term" and "limited emergency" appointments.

Salaries Employees. Primarily employees occupying positions subject to the Classification Act of 1949, as amended, and a limited number of other employees whose compensation is established by other legislation, Executive Order, or administrative determination.

Senior Executive Service (SES). Positions in an agency which are grade 16, 17, or 18 of the General Schedule or Level IV or V of the Executive Schedule (unless exempted). Also includes equivalent positions which need not be filled by appointment by the President and confirmation by the Senate and which have not been specifically excluded from the SES.

Total Paid Civilian Employment. Total direct and indirect hire civilian employment. For direct hires, includes, with some exceptions, all direct hire employees who had not officially separated as of the report date and who either worked during the reporting period or were on paid leave.

Wage System Employees. Employees whose basic rates of pay are fixed in accordance with locally prevailing rates or by wage boards or similar administrative authority. Includes prevailing rate employees. (Prevailing rate employees are those employed by an agency in a recognized trade or craft; other skilled mechanical craft; or an unskilled, semiskilled, or skilled manual labor occupation. Also includes any other person, including a foreman or supervisor, in a position where trade, craft, or labor experience and knowledge is a paramount requirement.)

