

AD-A151 137

CIVILIAN MANPOWER STATISTICS, JANUARY, FY-82. (U)
WASHINGTON HEADQUARTERS SERVICE (DOD) DIR FOR INFO
OP & RPTS. JAN 82. DIOR/MO4-82/04

W/A

UNCLASSIFIED

F/G 5/9

N/L

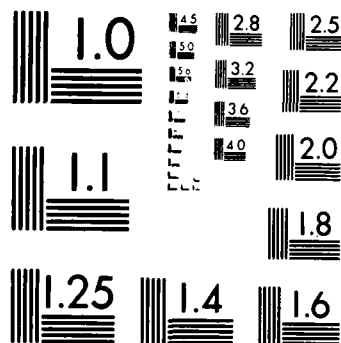
1 OF 1
AD-A151 137



END
FILMED
11 04 85

1 OF 1

AD-A151 137



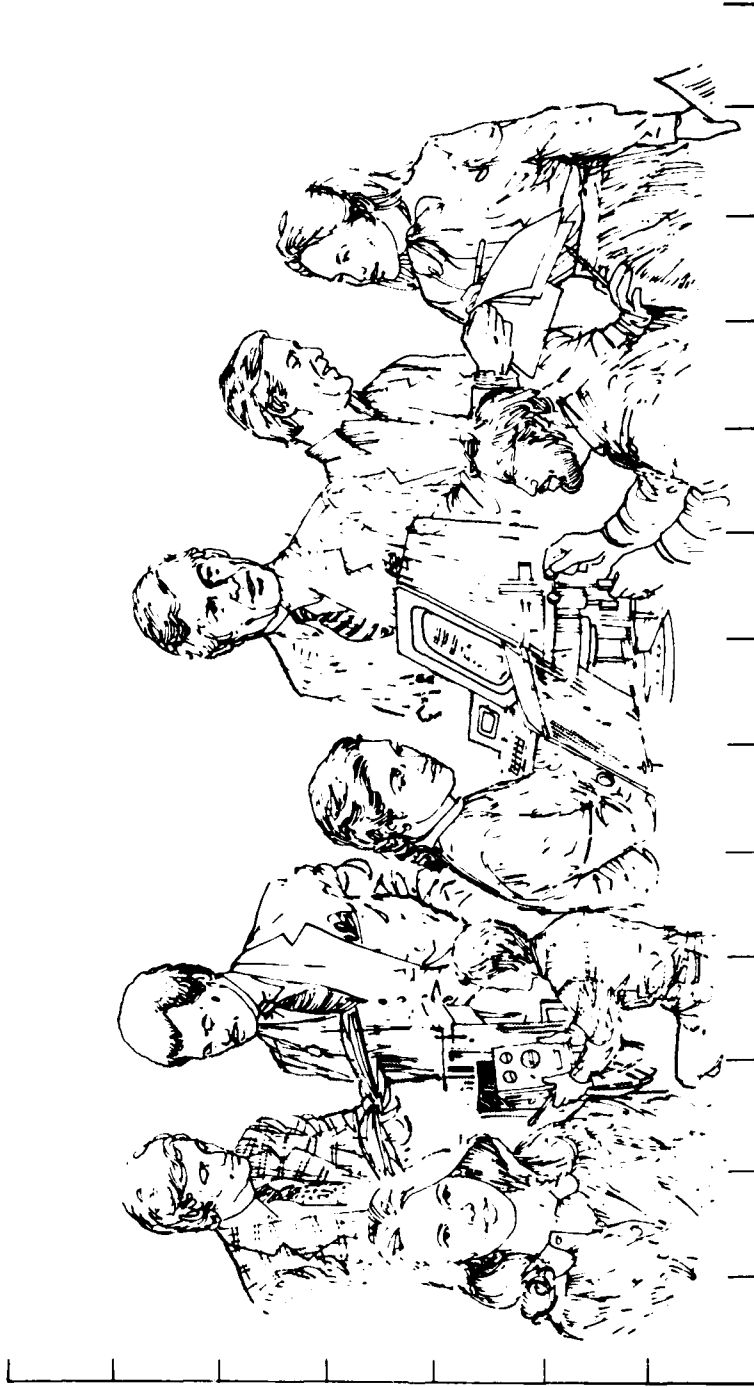
MICROCOPY RESOLUTION TEST CHART
NATIONAL BUREAU OF STANDARDS 1963-A

**THIS REPORT IS UNCLASSIFIED AND
ITS DISTRIBUTION IS UNLIMITED**

Department of Defense

CIVILIAN MANPOWER STATISTICS

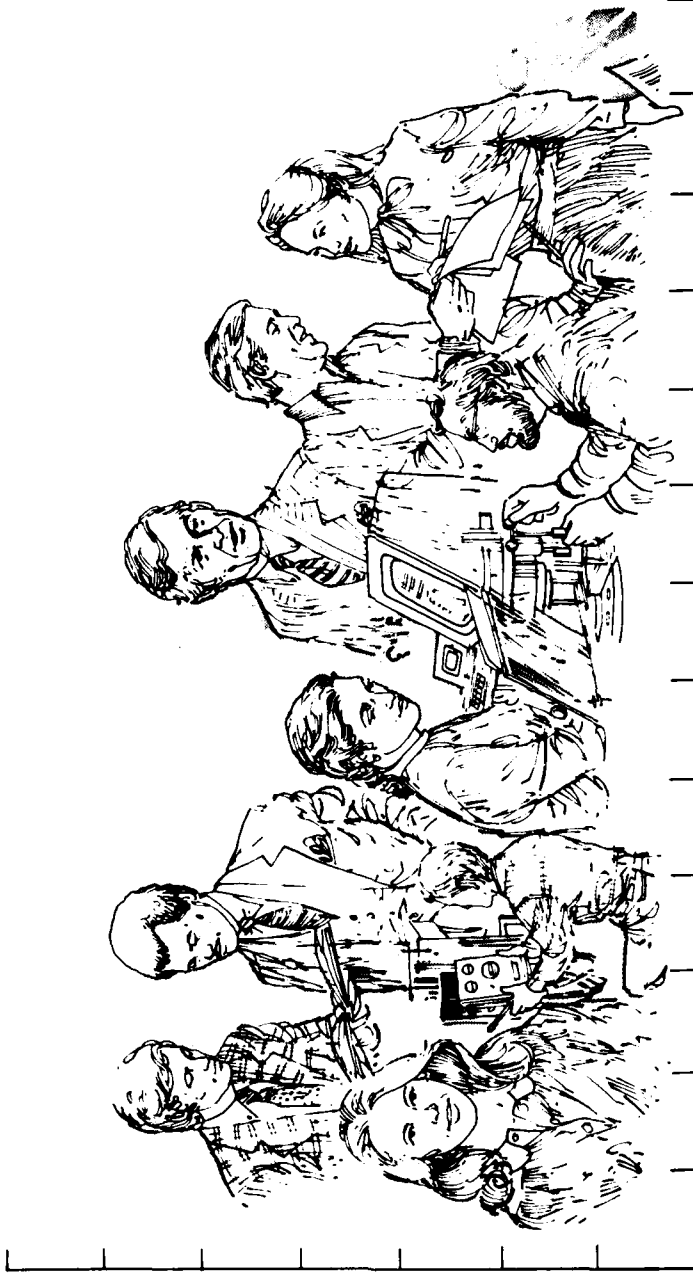
JANUARY 1982



OFFICE OF PERSONNEL MANAGEMENT

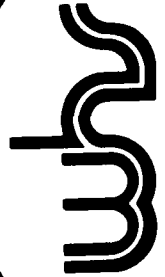


Department of Defense
CIVILIAN MANPOWER STATISTICS



OSD

WASHINGTON HEADQUARTERS SERVICES



**DIRECTORATE FOR INFORMATION
 OPERATIONS AND REPORTS (DIOR)
 THE PENTAGON, WASHINGTON, D.C.**

F O R E W O R D

CIVILIAN MANPOWER STATISTICS (CMS) is a monthly publication of Washington Headquarters Services, Directorate for Information Operations and Reports (WHS/DIOR) of the Office of the Secretary of Defense.

CMS provides audited, statistical information on the entire civilian workforce of the Department of Defense with the exception of personnel of the National Security Agency and personnel paid from non-appropriated funds. It is produced primarily from a computerized data base developed and maintained by WHS/DIOR from monthly information provided to the Office of Personnel Management on SF 113-A, Monthly Report of Federal Civilian Employment.

Questions on material in this publication and requests for additional copies or changes in distribution should be addressed to the Director, Washington Headquarters Services, Room 3E843, The Pentagon, Washington, D.C. 20301.

T A B L E O F C O N T E N T S

<u>Table Number</u>	<u>Former Designation</u>	<u>Title</u>	<u>PAGE</u>
		Glossary	1
Table 1	P10 (Rev.)	Department of Defense - Civilian Employment Summary	2
Table 2	P30.11 (Rev.)	Department of Defense - Trends in Civilian Employment Subject to OMB Ceiling	3
Table 3	P30.10	Department of Defense - Direct Hire Civilian Employment Subject to OMB Ceiling	4
Table 4	P12.2	Department of Defense - Civilian and Military Personnel--OSD-JCS and Other Defense Activities	5
Table 5	P31.0	Department of Defense - Total Paid Civilian Employment by Category	6
Table 6	P32.0	Department of Defense - Total Paid Civilian Employment by Location	7
Table 7	P32.6	Department of Defense - Indirect Hire Personnel by Country	8
Table 8	P33.1	Department of Defense - Monthly Accessions and Separations of Direct Hire Civilian Employees	9

G L O S S A R Y

Military Functions. Activities normally associated with the uniform services.

Civil Functions. Functions primarily associated with the Civil Works program of the Army Corps of Engineers. This program encompasses planning, programming, designing, constructing, and operating Federal water resource projects for navigation, flood control, hydroelectric power, water supply, recreation, and related activities. Civil Functions also includes cemeterial workers (Army) and several conservation management employees (Air Force).

Direct Hire Civilians. Employees hired directly by an agency of the Department of Defense. Included are foreign nationals hired by the Department of Defense to support DoD activities in their home countries.

Indirect Hire Civilians. Foreign nationals assigned to support U.S. forces through contracts or agreements with foreign governments (or agencies thereof). These personnel are employees of the foreign governments involved.

Total Paid Civilian Employment. Total direct and indirect hire civilian employment. For direct hire, includes, with some exceptions, all direct hire employees who had not officially separated as of the report date and who either worked during the reporting period or were on paid leave.

OMB Ceiling Employment. Employees subject to Office of Management and Budget (OMB) ceilings established to administer Presidential employment ceiling limitations. For direct hire employees, it excludes employees such as Summer Aids or in the Stay-in-School, Federal Junior Fellowship, and Worker-Trainee Opportunity Programs, and those who are covered by other official exemptions granted by OMB.

Agencies.

OSD-0JCS = Office of the Secretary of Defense and Organization of the
 Joint Chiefs of Staff
AFIS = Armed Forces Information Service
CHAMPUS = Civilian Health and Medical Program of the Uniform Services
DARPA = Defense Advanced Research Projects Agency
DSAA = Defense Security Assistance Agency
TRIMIS = Tri-Service Medical Information System
USCMA = U.S. Court of Military Appeals
OEA = Office of Economic Adjustment
WHS = Washington Headquarters Services
DLS = Defense Legal Services

TABLE 1
DEPARTMENT OF DEFENSE
CIVILIAN EMPLOYMENT SUMMARY

JANUARY 31, 1982

CIVILIAN EMPLOYMENT A/	TOTAL DOD	ARMY	B/ NAVY	C/ ATR FORCE	OTHER DEFENSE AGENCIES D/E/
<u>MILITARY FUNCTIONS</u>					
OMB CEILING EMPLOYMENT	1,045,121	379,930	333,364	250,658	81,169
DIRECT HIRE	964,154	324,626	322,675	237,434	79,419
INDIRECT HIRE	80,967	55,304	10,689	13,224	1,750
TOTAL EMPLOYMENT	1,057,197	383,377	338,607	253,014	82,199
DIRECT HIRE	976,230	328,073	327,918	239,790	80,449
INDIRECT HIRE	80,967	55,304	10,689	13,224	1,750
<u>CIVIL FUNCTIONS (ALL DIRECT HIRE)</u>					
OMB CEILING EMPLOYMENT	31,233	31,229	0	4	0
TOTAL EMPLOYMENT	32,210	32,206	0	4	0
<u>TOTAL MILITARY AND CIVIL FUNCTIONS</u>					
OMB CEILING EMPLOYMENT	1,076,354	411,159	333,364	250,662	81,169
DIRECT HIRE	995,387	355,855	322,675	237,438	79,419
INDIRECT HIRE	80,967	55,304	10,689	13,224	1,750
TOTAL EMPLOYMENT	1,089,407	415,583	338,607	253,018	82,199
DIRECT HIRE	1,008,440	360,279	327,918	239,794	80,449
INDIRECT HIRE	80,967	55,304	10,689	13,224	1,750

A/ INCLUDED IN TOTAL EMPLOYMENT AND EXCLUDED FROM OMB CEILING EMPLOYMENT ARE EMPLOYEES EXEMPT FROM OFFICE OF MANAGEMENT AND BUDGET (OMB) CEILING CONTROL, I.E. SUMMER AIDS AND EMPLOYEES IN THE STAY-IN-SCHOOL, FEDERAL JUNIOR FELLOWSHIP, AND WORKER-TRAINEE OPPORTUNITY PROGRAMS, AND THOSE COVERED BY OTHER OFFICIAL EXEMPTIONS GRANTED BY OMB.

B/ INCLUDES MARINE CORPS CIVILIAN PERSONNEL.

C/ AIR FORCE INFORMATION AS OF DECEMBER 31, 1981.

D/ INCLUDES OSD, OJCS, AFIS, CHAMPUS, DARPA, DSA, TRIMIS, USCSMA, OEA, WHS, DLS, AND THE DEFENSE AGENCIES (LISTED IN TABLE 3).

E/ DODDS INFORMATION CONTAINS SOME DIRECT AND INDIRECT HIRE FOREIGN NATIONAL DATA AS OF NOVEMBER 30, 1981.

TABLE 2

DEPARTMENT OF DEFENSE
TRENDS IN CIVILIAN EMPLOYMENT*
SUBJECT TO OMB CEILING

DEPARTMENT AND FUNCTION	SEP 30, 78	SEP 30, 79	SEP 30, 80	SEP 30, 81	DEC 31, 81	JAN 31, 82
<u>MILITARY FUNCTIONS</u>	<u>1,016,751</u>	<u>991,081</u>	<u>990,356</u>	<u>1,019,466</u>	<u>1,045,608</u>	<u>1,045,121</u>
DIRECT HIRE A/	935,703	915,764	915,786	939,942	964,586	964,154
INDIRECT HIRE B/	81,048	75,317	74,570	79,524	81,022	80,967
ARMY						
DIRECT HIRE	371,369	359,121	360,508	372,111	379,652	379,930
INDIRECT HIRE	316,078	309,475	311,795	318,278	324,414	324,626
NAVY						
DIRECT HIRE	316,796	310,176	308,715	320,858	334,058	333,364
INDIRECT HIRE	306,420	299,449	297,984	310,123	323,262	322,675
AIR FORCE						
DIRECT HIRE	251,091	245,082	244,342	246,165	250,658	250,658 D/
INDIRECT HIRE	237,024	231,838	230,938	232,933	237,434	237,434
OTHER DEFENSE ACTIVITIES						
DIRECT HIRE	77,495	76,702	76,791	80,332	81,240 C/	81,169 E/
INDIRECT HIRE	76,181	75,002	75,069	78,608	79,476	79,419
	1,314	1,700	1,722	1,724	1,764	1,750
<u>CIVIL FUNCTIONS (ALL DIRECT HIRE) A/</u>	<u>33,590</u>	<u>33,342</u>	<u>32,611</u>	<u>31,800</u>	<u>31,309</u>	<u>31,233</u>
ARMY						
AIR FORCE	33,586	33,336	32,608	31,796	31,305	31,229
	4	6	3	4	4	4
<u>TOTAL MILITARY AND CIVIL FUNCTIONS</u>	<u>1,050,341</u>	<u>1,024,423</u>	<u>1,022,967</u>	<u>1,051,266</u>	<u>1,076,917</u>	<u>1,076,354</u>
DIRECT HIRE A/	969,293	949,106	948,397	971,742	995,895	995,387
INDIRECT HIRE B/	81,048	75,317	74,570	79,524	81,022	80,967

A/ AS REPORTED OFFICIALLY TO THE OFFICE OF PERSONNEL MANAGEMENT ON LINE 29 OF SF 113-A. EXCLUDES EMPLOYEES EXEMPT FROM THE PRESIDENT'S CEILING CONTROL.

B/ FOREIGN NATIONALS SUPPORTING U.S. MILITARY FORCES OVERSEAS UNDER CONTRACTS OR AGREEMENTS WITH FOREIGN GOVERNMENTS. ALL INDIRECT HIRES SUPPORT MILITARY FUNCTIONS.

C/ DODDS INFORMATION CONTAINS DIRECT AND INDIRECT HIRE FOREIGN NATIONAL DATA AS OF NOVEMBER 30, 1981.

D/ AIR FORCE INFORMATION AS OF DECEMBER 31, 1981.

E/ DODDS INFORMATION CONTAINS SOME DIRECT AND INDIRECT HIRE FOREIGN NATIONAL DATA AS OF NOVEMBER 30, 1981.

TABLE 3

DEPARTMENT OF DEFENSE
DIRECT HIRE CIVILIAN EMPLOYMENT
SUBJECT TO OMB CEILING A/

COMPONENT	TOTAL EMPLOYMENT			FULL-TIME W/ PERMANENT APPOINTMENTS		
	DEC 31, 81	JAN 31, 82	CEILING SEP 30, 82	DEC 31, 81	JAN 31, 82	CEILING SEP 30, 82
<u>MILITARY FUNCTIONS</u>	<u>964,586</u>	<u>964,154</u>	<u>947,500</u>	<u>878,023</u>	<u>866,239</u>	<u>896,500</u>
ARMY	324,414	324,626	322,500	292,439	281,052	295,707
NAVY	323,262	322,675	308,300	289,693	289,334	297,814
AIR FORCE	237,434	237,434 D/	234,300	221,809	221,809 D/	222,635
OSD & RELATED ACTIVITIES B/	2,510	2,493	2,601	2,274	2,265	2,436
DEFENSE AUDIOVISUAL AGENCY	463	440	503	448	429	503
DEFENSE AUDIT SERVICE	409	422	501	404	417	499
DEFENSE COMMUNICATIONS AGENCY	1,647	1,649	1,638	1,593	1,597	1,622
DEFENSE CONTRACT AUDIT AGENCY	3,547	3,533	3,514	3,502	3,491	3,494
DEFENSE INTELLIGENCE AGENCY	2,645	2,640	2,707	2,393	2,396	2,702
DEFENSE INVESTIGATIVE SERVICE	2,610	2,683	3,390	2,571	2,633	3,387
DEFENSE LOGISTICS AGENCY	46,246	46,263	47,441	44,610	44,585	46,741
DEFENSE MAPPING AGENCY	8,425	8,372	8,293	8,248	8,197	8,233
DEFENSE NUCLEAR AGENCY	634	627	641	596	603	641
DEPARTMENT OF DEFENSE DEPENDENTS SCHOOLS	9,679 C/	9,646 E/	10,481	6,942 C/	6,914 E/	9,436
UNIFORM SERVICES UNIVERSITY OF THE HEALTH SCIENCES	652	651	690	501	517	650
<u>CIVIL FUNCTIONS</u>	<u>31,309</u>	<u>31,233</u>	<u>N/A</u>	<u>28,938</u>	<u>28,922</u>	<u>N/A</u>
ARMY	31,305	31,229	N/A	28,934	28,918	N/A
AIR FORCE	4	4 D/	4	4	4 D/	4
<u>TOTAL MILITARY AND CIVIL FUNCTIONS</u>	<u>995,895</u>	<u>995,387</u>	<u>N/A</u>	<u>906,961</u>	<u>895,161</u>	<u>N/A</u>

A/ AS REPORTED OFFICIALLY TO THE OFFICE OF PERSONNEL MANAGEMENT ON LINE 29 OF SF 113-A.

B/ INCLUDES OSD-OJCS, AFIS, CHAMPUS, DARPA, DSAA, TRIMIS, USCSMA, OEA, WHS, AND DLS.

C/ DODDS INFORMATION CONTAINS DIRECT HIRE FOREIGN NATIONAL DATA AS OF NOVEMBER 30, 1981.

D/ AIR FORCE INFORMATION AS OF DECEMBER 31, 1981.

E/ DODDS INFORMATION CONTAINS SOME DIRECT HIRE FOREIGN NATIONAL DATA AS OF NOVEMBER 30, 1981.

TABLE 4

DEPARTMENT OF DEFENSE
CIVILIAN AND MILITARY PERSONNEL
OSD-JCS AND OTHER DEFENSE ACTIVITIES

JANUARY 31, 1982

COMPONENT	TOTAL	A/ CIVILIAN	TOTAL	MILITARY	
				OFFICER	ENLISTED
<u>TOTALS</u>	<u>87,738</u>	<u>80,449</u>	<u>7,289</u>	<u>4,298</u>	<u>2,991</u>
OSD & RELATED ACTIVITIES B/	4,277	2,514	1,763	1,238	525
DEFENSE AUDIOVISUAL AGENCY	560	444	116	18	98
DEFENSE AUDIT SERVICE	423	423	-	-	-
DEFENSE COMMUNICATIONS AGENCY	3,183	1,691	1,492	463	1,029
DEFENSE CONTRACT AUDIT AGENCY	3,555	3,555	-	-	-
DEFENSE INTELLIGENCE AGENCY	4,455	2,640	1,815	1,177	638
DEFENSE INVESTIGATIVE SERVICE	2,849	2,722	127	65	62
DEFENSE LOGISTICS AGENCY	48,028	47,063	965	806	159
DEFENSE MAPPING AGENCY	8,883	8,447	436	178	258
DEFENSE NUCLEAR AGENCY	1,125	642	483	297	186
DEPARTMENT OF DEFENSE DEPENDENTS SCHOOLS D/	9,646	9,646	-	-	-
UNIFORMED SERVICES UNIVERSITY OF THE HEALTH SCIENCES	754	662	92 C/	56	36

A/ INCLUDES TOTAL PAID DIRECT HIRE CIVILIAN EMPLOYMENT AS REPORTED ON LINE 1 OF SF 113-A.

B/ INCLUDES OSD-OJCS, AFIS, CHAMPUS, DARPA, DSA, TRIMIS, USCSMA, OEA, WHS, AND DLS.

C/ EXCLUDES STUDENTS.

D/ DODDS INFORMATION CONTAINS SOME DIRECT HIRE FOREIGN NATIONAL DATA AS OF NOVEMBER 30, 1981.

TABLE 5

DEPARTMENT OF DEFENSE
TOTAL PAID CIVILIAN EMPLOYMENT BY CATEGORY

JANUARY 31, 1982

TYPE PERSONNEL	TOTAL DEPT OF DEFENSE	ARMY	NAVY	AIR FORCE D/	OTHER DEFENSE ACTIVITIES E/
<u>WORLDWIDE TOTAL</u>	<u>1,089,407</u>	<u>415,583</u>	<u>338,607</u>	<u>253,018</u>	<u>82,199</u>
<u>DIRECT HIRE A/</u>	<u>1,008,440</u>	<u>360,279</u>	<u>327,918</u>	<u>239,794</u>	<u>80,449</u>
BY FULL-TIME & PART-TIME:					
FULL-TIME	983,187	349,590	321,192	234,937	77,468
PART-TIME & INTERMITTENT	25,253	10,689	6,726	4,857	2,981
BY CITIZENSHIP:					
U.S. CITIZENS B/	969,966	344,030	313,249	232,882	79,805
FOREIGN NATIONALS	38,474	16,249	14,669	6,912	644
BY SALARIED & WAGE BOARD:					
SALARIED	643,993	243,101	181,208	150,875	68,809
WAGE BOARD	364,447	117,178	146,710	88,919	11,640
<u>INDIRECT HIRE C/</u>	<u>80,967</u>	<u>55,304</u>	<u>10,689</u>	<u>13,224</u>	<u>1,750</u>
<u>TOTAL U.S. CITIZENS</u>	<u>969,966</u>	<u>344,030</u>	<u>313,249</u>	<u>232,882</u>	<u>79,805</u>
<u>TOTAL FOREIGN NATIONALS</u>	<u>119,441</u>	<u>71,553</u>	<u>25,358</u>	<u>20,136</u>	<u>2,394</u>

A/ AS REPORTED TO THE OFFICE OF PERSONNEL MANAGEMENT ON LINE SF 113-A.

B/ INCLUDES U.S. CITIZENS BY VIRTUE OF CITIZENSHIP IN A U.S. TERRITORY.

C/ FOREIGN NATIONALS SUPPORTING U.S. MILITARY IN OVERSEAS AREAS UNDER CONTRACTS/AGREEMENTS WITH FOREIGN GOVERNMENTS.

D/ AIR FORCE INFORMATION AS OF DECEMBER 31, 1981.

E/ DODDS INFORMATION CONTAINS SOME DIRECT AND INDIRECT HIRE FOREIGN NATIONAL DATA AS OF NOVEMBER 30, 1981.

TABLE 6

DEPARTMENT OF DEFENSE
TOTAL PAID CIVILIAN EMPLOYMENT BY LOCATION

JANUARY 31, 1982

TYPE PERSONNEL	TOTAL DEPT OF DEFENSE	ARMY	NAVY	AIR FORCE C/	OTHER DEFENSE ACTIVITIES D/
<u>WORLDWIDE TOTAL</u>	<u>1,089,407</u>	<u>415,583</u>	<u>338,607</u>	<u>253,018</u>	<u>82,199</u>
<u>UNITED STATES (DIRECT HIRE)</u>	<u>924,060</u>	<u>321,397</u>	<u>306,010</u>	<u>226,791</u>	<u>69,862</u>
BY LOCATION:					
WASHINGTON, D.C.	81,777	26,138	35,249	6,476	13,914
REMAINDER OF U.S. A/	842,283	295,259	270,761	220,315	55,948
BY SALARIED & WAGE BOARD:					
SALARIED	594,908	225,151	172,008	139,438	58,311
WAGE BOARD	329,152	96,246	134,002	87,353	11,551
<u>U.S. TERRITORIES (DIRECT HIRE)</u>	<u>6,469</u>	<u>1,041</u>	<u>4,460</u>	<u>922</u>	<u>46</u>
BY CITIZENSHIP:					
U.S. CITIZENS B/	6,384	1,040	4,377	921	46
FOREIGN NATIONALS	85	1	83	1	-
BY SALARIED & WAGE BOARD:					
SALARIED	2,903	685	1,788	396	34
WAGE BOARD	3,566	356	2,672	526	12
<u>FOREIGN COUNTRIES</u>	<u>158,878</u>	<u>93,145</u>	<u>28,137</u>	<u>25,305</u>	<u>12,291</u>
<u>DIRECT HIRE</u>	<u>77,911</u>	<u>37,841</u>	<u>17,448</u>	<u>12,081</u>	<u>10,541</u>
BY CITIZENSHIP:					
U.S. CITIZENS B/	39,999	21,950	2,922	5,205	9,922
FOREIGN NATIONALS	37,912	15,891	14,526	6,876	619
BY SALARIED & WAGE BOARD:					
SALARIED	46,182	17,265	7,412	11,041	10,464
WAGE BOARD	31,729	20,576	10,036	1,040	77
<u>INDIRECT HIRE (FOREIGN NATIONALS)</u>	<u>80,967</u>	<u>55,304</u>	<u>10,689</u>	<u>13,224</u>	<u>1,750</u>

A/ INCLUDES ALASKA AND HAWAII.

B/ INCLUDES U.S. CITIZENS BY VIRTUE OF CITIZENSHIP IN A U.S. TERRITORY.

C/ AIR FORCE INFORMATION AS OF DECEMBER 31, 1981.

D/ DODDS INFORMATION CONTAINS SOME DIRECT AND INDIRECT HIRE FOREIGN NATIONAL DATA AS OF NOVEMBER 30, 1981.

TABLE 7
DEPARTMENT OF DEFENSE
INDIRECT HIRE PERSONNEL BY COUNTRY A/

JANUARY 31, 1982

COUNTRY	TOTAL	ARMY	NAVY	AIR FORCE B/	OTHER DEFENSE ACTIVITIES C/
<u>TOTAL</u>	<u>80,967</u>	<u>55,304</u>	<u>10,689</u>	<u>13,224</u>	<u>1,750</u>
BELGIUM	536	518	-	2	16
GERMANY	55,242	47,929	31	6,031	1,251
GREECE	580	15	115	431	19
GUAM	4	-	4	-	-
ITALY	1	-	1	-	-
JAPAN (INCLUDES OKINAWA)	17,728	3,421	9,321	4,728	258
KOREA	3,144	3,144	-	-	-
NETHERLANDS	359	277	-	69	13
PHILIPPINES	7	-	6	-	1
SPAIN	2,047	-	1,143	817	87
UNITED KINGDOM	1,319	-	68	1,146	105

A/ INDIRECT HIRE PERSONNEL ARE FOREIGN NATIONALS SUPPORTING U.S. MILITARY FORCES UNDER CONTRACTS OR AGREEMENTS WITH FOREIGN GOVERNMENTS.

B/ AIR FORCE INFORMATION AS OF DECEMBER 31, 1981.

C/ DODDS INFORMATION CONTAINS SOME INDIRECT HIRE FOREIGN NATIONAL DATA AS OF NOVEMBER 30, 1981.

TABLE 8

DEPARTMENT OF DEFENSE
MONTHLY ACCESSIONS AND SEPARATIONS OF DIRECT HIRE CIVILIAN EMPLOYEES

DATE	ACCESSIONS		SEPARATIONS	
	NUMBER	RATE	NUMBER	RATE
1980				
JANUARY	15,754	1.63	19,744	2.05
FEBRUARY	12,841	1.33	12,958	1.34
MARCH	17,794	1.84	15,575	1.61
APRIL	15,226	1.57	12,488	1.29
MAY	18,584	1.91	13,311	1.37
JUNE	35,078	3.55	22,012	2.23
JULY	16,997	1.72	15,140	1.53
AUGUST	19,622	2.02	34,671	3.56
SEPTEMBER	25,301	2.64	38,376	4.00
OCTOBER	23,733	2.45	13,652	1.41
NOVEMBER	12,973	1.34	11,312	1.16
DECEMBER	12,508	1.29	10,351	1.06
1981				
JANUARY	18,714	1.92	19,917	2.05
FEBRUARY	7,734	0.80	9,983	1.03
MARCH	12,348	1.27	9,596	0.98
APRIL	14,992	1.53	9,681	0.99
MAY	21,570	2.18	11,490	1.16
JUNE	39,402	3.91	20,928	2.08
JULY	24,016	2.35	15,497	1.52
AUGUST	23,514	2.31	30,080	2.96
SEPTEMBER	18,071	1.84	47,292	4.81
OCTOBER	25,157	2.52	11,373	1.14
NOVEMBER	15,942	1.59	9,256	0.92
DECEMBER	14,806	1.47	11,772	1.17
1982				
JANUARY A/	12,277	1.22	10,603	1.05

A/ AIR FORCE INFORMATION FOR DECEMBER 1981.

ND