

AD-A151 123

CIVILIAN MANPOWER STATISTICS, OCTOBER, FY-81. (U)  
WASHINGTON HEADQUARTERS SERVICE (DOD) DIR FOR INFO  
OP & RPTS. OCT 80. DIOR/MO4-81/01

VII

UNCLASSIFIED

F/G 5/9

N/L

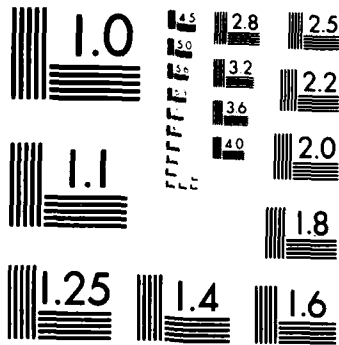


1 OF 1  
AD-A151 123

END  
FILMED  
11 04 85

# 1 OF 1

# AD-A151 123



MICROCOPY RESOLUTION TEST CHART  
NATIONAL BUREAU OF STANDARDS-1963-A

**THIS REPORT IS UNCLASSIFIED AND  
ITS DISTRIBUTION IS UNLIMITED**

# DEPARTMENT OF DEFENSE CIVILIAN MANPOWER STATISTICS



AS OF OCTOBER 31, 1980



**WASHINGTON HEADQUARTERS SERVICES**  
Directorate for Information Operations and Reports

FOREWORD

CIVILIAN MANPOWER STATISTICS (CMS) is a monthly publication prepared by the Washington Headquarters Services, Directorate for Information Operations and Reports (WHS/DIOR) of the Office of the Secretary of Defense.

CMS presents audited statistical data pertaining to civilian personnel of the Department of Defense. This publication is produced from the same computerized data base maintained and utilized by WHS/DIOR for the submission of the Monthly Report of Federal Civilian Employment (SF 113-A) to the Office of Personnel Management.

In the past, the tables in this report had been assigned so-called "p" numbers. Beginning with the September 30, 1980 publication of CMS, the tables have been renumbered consecutively. For purposes of clarification, the former "p" number has been placed parenthetically in the title line of each table.

Requests for additional copies and changes in distribution and addresses should be addressed to the Director, Washington Headquarters Services, Room 3E843, The Pentagon, Washington, DC 20301.

TABLE OF CONTENTS

<u>Number</u>	<u>Title</u>
Table 1	Department of Defense Civilian and Military Personnel, OSD-JCS and Other Defense Activities (P12.2)
Table 2	Department of Defense Direct Hire Civilian Employment (P30.10)
Table 3	Department of Defense Summary of Civilian Employment (P30.11)
Table 4	Department of Defense Civilian Personnel by Category (P31.0)
Table 5	Department of Defense Civilian Personnel by Location (P32.0)
Table 6	Department of Defense Indirect Hire Personnel by Country (P32.6)
Table 7	Department of Defense Monthly Accessions and Separations of Direct Hire Civilian Employees (P33.1)
Table 8	Department of Defense Monthly Separations of Department of Defense Direct Hire Civilian Employees by Cause (P33.2)

TABLE 1

DEPARTMENT OF DEFENSE  
CIVILIAN AND MILITARY PERSONNEL  
OSD-JCS AND OTHER DEFENSE ACTIVITIES (P12.2)

OCTOBER 31, 1980

COMPONENT	TOTAL	CIVILIAN	TOTAL	MILITARY	
				OFFICER	ENLISTED
TOTALS	84,503	77,508	6,995	4,159	2,836
OSD & RELATED ACTIVITIES*	4,129	2,421	1,708	1,182	526
DEFENSE AUDIT SUERVICE	380	380	-	-	-
DEFENSE COMMUNICATIONS AGENCY	3,024	1,591	1,433	458	975
DEFENSE CONTRACT AUDIT AGENCY	3,427	3,427	-	-	-
DEFENSE INTELLIGENCE AGENCY	4,313	2,576	1,737	1,119	618
DEFENSE INVESTIGATIVE SERVICE	2,289	2,105	184	95	89
DEFENSE LOGISTICS AGENCY	46,638	45,689	949	793	156
DEFENSE MAPPING AGENCY	8,747	8,321	426	174	252
DEFENSE NUCLEAR AGENCY	1,081	597	484	293	191
DEPARTMENT OF DEFENSE DEPENDENTS SCHOOLS	9,472	9,472	-	-	-
UNIFORMED SERVICES UNIVERSITY OF HEALTH SCIENCES	584	510	74	45	29
DEFENSE AUDIO-VISUAL AGENCY	419	419	-	-	-

\* INCLUDES OSD-JCS, AFIS, CHAMPUS, DARPA, DSAA, TRIMIS, USCSMA, AND WHS.

DEPARTMENT OF DEFENSE  
WASHINGTON HEADQUARTERS SERVICES  
DIRECTORATE FOR INFORMATION  
OPERATIONS AND REPORTS

TABLE 2

DEPARTMENT OF DEFENSE  
DIRECT HIRE CIVILIAN EMPLOYMENT (P30.10)A/

COMPONENT	FULL-TIME IN PERMANENT POSITIONS					TOTAL EMPLOYMENT		
	SEP 30, 80	OCT 31, 80	SEP 30, 80 B/	SEP 30, 80	OCT 31, 80	SEP 30, 80 B/	SEP 30, 80	SEP 30, 80 B/
<b>MILITARY FUNCTIONS:</b>								
ARMY	286,321	285,783	292,921	311,795	310,584	306,807		
NAVY	289,267	291,483	290,840	297,984	307,215	296,840		
AIR FORCE	220,599	221,051	223,910	230,938	231,012	228,910		
OSD & RELATED ACTIVITIES*	2,157	2,178	2,408	2,386	2,404	2,569		
DEFENSE AUDIT SERVICE	377	375	393	379	377	393		
DEFENSE COMMUNICATIONS AGENCY	1,515	1,514	1,589	1,547	1,550	1,612		
DEFENSE CONTRACT AUDIT AGENCY	3,378	3,364	3,559	3,423	3,406	3,568		
DEFENSE INTELLIGENCE AGENCY	2,559	2,551	2,559	2,569	2,575	2,564		
DEFENSE INVESTIGATIVE SERVICE	1,503	2,081	1,540	1,506	2,084	1,540		
DEFENSE LOGISTICS AGENCY	44,399	44,066	45,920	45,169	44,932	46,493		
DEFENSE MAPPING AGENCY	8,008	8,027	7,997	8,135	8,227	8,037		
DEFENSE NUCLEAR AGENCY	573	571	630	584	580	630		
DEPARTMENT OF DEFENSE DEPENDENTS SCHOOLS	6,746	7,072	9,022	8,853	9,472	9,802		
UNIFORM SERVICES UNIVERSITY OF THE HEALTH SCIENCES	449	450	542	502	510	585		
DEFENSE AUDIOVISUAL AGENCY	16	383	N/A	16	418	N/A		
TOTAL, MILITARY FUNCTIONS	867,867	870,949	883,830	915,786	925,346	910,350		
CIVIL FUNCTIONS	27,730	27,718	N/A	32,611	33,345	N/A		
TOTAL DOD	895,597	898,667		948,397	958,691			

A/ OMB CEILING EMPLOYMENT. EXCLUDES NSA AND YOUTH PROGRAMS.

B/ PRESIDENT'S FY80 BUDGET PLAN.

\* INCLUDES OSD-JCS, AFIS, CHAMPUS, DARPA, DSAA, TRIMIS, USCMA AND WHS.

DEPARTMENT OF DEFENSE  
WASHINGTON HEADQUARTERS SERVICES  
DIRECTORATE FOR INFORMATION  
OPERATIONS AND REPORTS



TABLE 3

 DEPARTMENT OF DEFENSE  
 SUMMARY OF CIVILIAN EMPLOYMENT (P30.11)

DEPARTMENT AND FUNCTION	30 SEP 77	30 SEP 78	30 SEP 79	31 AUG 80	30 SEP 80	31 OCT 80
DIRECT HIRE <u>A/</u>						
TOTAL DEPARTMENT OF DEFENSE	972,407	969,293	949,106	957,197	948,397	958,691
MILITARY FUNCTIONS	939,021	935,703	915,764	922,181	915,786	925,346
CIVIL FUNCTIONS	33,386	33,590	33,342	35,016	32,611	33,345
TOTAL ARMY	348,418	349,664	342,811	346,794	344,403	343,926
MILITARY FUNCTIONS	315,037	316,078	309,475	311,781	311,795	310,584
CIVIL FUNCTIONS	33,381	33,586	33,336	35,013	32,608	33,342
TOTAL NAVY	306,668	306,420	299,449	306,825	297,984	307,215
TOTAL AIR FORCE	240,824	237,028	231,844	229,309	230,941	231,015
MILITARY FUNCTIONS	240,819	237,024	231,838	229,306	230,938	231,012
CIVIL FUNCTIONS	5	4	6	3	3	3
TOTAL OTHER DEFENSE ACTIVITIES	76,497	76,181	75,002	74,269	75,069	76,535
INDIRECT HIRE <u>B/</u>						
TOTAL DEPARTMENT OF DEFENSE	83,395	81,048	75,317	74,275	74,570	74,174
ARMY	56,528	55,291	49,646	48,576	48,713	48,751
NAVY	10,944	10,376	10,727	10,694	10,731	10,461
AIR FORCE	14,502	14,067	13,244	13,278	13,404	13,232
OTHER DEFENSE ACTIVITIES	1,421	1,314	1,700	1,727	1,722	1,730

A/ "TOTAL OMB CEILING EMPLOYEES" AS REPORTED OFFICIALLY TO THE OFFICE OF PERSONNEL MANAGEMENT ON SF 113-A. EXCLUDES YOUTH PROGRAMS.

B/ FOREIGN NATIONALS SUPPORTING U.S. MILITARY FORCES OVERSEAS UNDER AGREEMENTS WITH FOREIGN GOVERNMENTS.

DEPARTMENT OF DEFENSE  
 WASHINGTON HEADQUARTERS SERVICES  
 DIRECTORATE FOR INFORMATION  
 OPERATIONS AND REPORTS

TABLE 4

DEPARTMENT OF DEFENSE  
CIVILIAN PERSONNEL BY CATEGORY (P31.0)  
OCTOBER 1980

	ARMY	NAVY	AIR FORCE	OTHER DEFENSE ACTIVITIES	TOTAL DEPT OF DEFENSE
WORLDWIDE TOTAL	396938	322155	246668	79238	1044999
DIRECT HIRE (†)	348187	311514	233436	77508	970645
BY FULL-TIME & PART-TIME					
FULL-TIME	338572	305560	228368	75011	947511
PART-TIME & INTERMITTENT	7644	5337	2810	1849	17640
BY CITIZENSHIP:					
U.S. CITIZENS (††)	332042	297009	226675	76879	932605
FOREIGN NATIONALS	16145	14505	6761	629	38040
BY SALARIED & WAGE BOARD					
SALARIED	233687	172094	145536	66187	617504
WAGE BOARD	114500	139420	87900	11321	353141
INDIRECT HIRE (†††)	48751	10641	13232	1730	74354
TOTAL U.S. CITIZENS	332042	297009	226675	76879	932605
TOTAL FOREIGN NATIONALS	64896	25146	19993	2359	112394

(†) TOTAL PAID EMPLOYEES AS REPORTED TO THE OFFICE OF PERSONNEL MANAGEMENT ON STANDARD FORM 113A.

(††) INCLUDES CITIZENS OF U.S. TERRITORIES.

(†††) FOREIGN NATIONALS SUPPORTING U.S. MILITARY IN OVERSEAS AREAS UNDER CONTRACT/AGREEMENT WITH FOREIGN GOVERNMENTS.

DEPARTMENT OF DEFENSE  
WASHINGTON HEADQUARTERS SERVICES  
DIRECTORATE FOR INFORMATION  
OPERATIONS AND REPORTS

TABLE 5

 DEPARTMENT OF DEFENSE  
 CIVILIAN PERSONNEL BY LOCATION (P32.0)  
 OCTOBER 1980

	ARMY	NAVY	AIR FORCE	OTHER DEFENSE ACTIVITIES	TOTAL DEPT OF DEFENSE
WORLDWIDE TOTAL	396938	322155	246668	79238	1044999
UNITED STATES (DIRECT HIRE)	313157	290202	220863	67124	891346
BY LOCATION					
WASHINGTON, D.C.	25311	34207	6062	13165	78745
REMAINDER OF U.S. (†)	287846	255995	214801	53959	812601
BY SALARIED & WAGE BOARD					
SALARIED	217372	163266	134510	55973	571121
WAGE BOARD	95785	126936	86353	11151	320225
U.S. TERRITORIES (DIRECT HIRE)	1092	4247	886	76	6301
BY CITIZENSHIP:					
U.S. CITIZENS (††)	1091	4210	885	45	6231
FOREIGN NATIONALS	1	37	1	31	70
BY SALARIED & WAGE BOARD					
SALARIED	735	1732	373	65	2905
WAGE BOARD	357	2515	513	11	3396
FOREIGN COUNTRIES	82689	27706	24919	12038	147352
DIRECT HIRE	33938	17065	11687	10308	72998
BY CITIZENSHIP:					
U.S. CITIZENS (††)	18099	2597	4965	9732	35393
FOREIGN NATIONALS	15839	14468	6722	576	37605
BY SALARIED & WAGE BOARD					
SALARIED	15580	7096	10653	10149	43478
WAGE BOARD	18358	9969	1034	159	29520
INDIRECT HIRE (FOREIGN NATIONALS)	48751	10641	13232	1730	74354

(†) INCLUDES ALASKA AND HAWAII

(††) INCLUDES EMPLOYEES WHO ARE U.S. CITIZENS BY VIRTUE OF CITIZENSHIP IN A U.S. TERRITORY

 DEPARTMENT OF DEFENSE  
 WASHINGTON HEADQUARTERS SERVICES  
 DIRECTORATE FOR INFORMATION  
 OPERATIONS AND REPORTS

TABLE 6

DEPARTMENT OF DEFENSE  
INDIRECT HIRE PERSONNEL BY COUNTRY (P32.6)

OCTOBER 31, 1980

COUNTRY	TOTAL	ARMY	NAVY	AIR FORCE	OTHER DEFENSE ACTIVITIES
TOTAL	74,174	48,751	10,461	13,232	1,730
BELGIUM	457	440	-	-	17
GERMANY	48,719	41,424	27	6,022	1,246
GREECE (INCLUDES CRETE)	572	15	117	424	16
JAPAN (INCLUDES OKINAWA)	17,670	3,497	9,153	4,766	254
KOREA	3,125	3,125	-	-	-
NETHERLANDS	330	249	-	69	12
PHILIPPINES	7	-	6	-	1
PORTUGAL	1	1	-	-	-
SPAIN	2,008	-	1,094	825	89
UNITED KINGDOM	1,285	-	64	1,126	95

INDIRECT HIRE PERSONNEL ARE FOREIGN NATIONALS SUPPORTING U.S. MILITARY FORCES UNDER CONTRACT OR AGREEMENTS WITH FOREIGN GOVERNMENTS.

DEPARTMENT OF DEFENSE  
WASHINGTON HEADQUARTERS SERVICES  
DIRECTORATE FOR INFORMATION  
OPERATIONS AND REPORTS

TABLE 7

DEPARTMENT OF DEFENSE  
MONTHLY ACCESSIONS AND SEPARATIONS OF DIRECT HIRE CIVILIAN EMPLOYEES (P33.1)

DATE	ACCESSIONS		SEPARATIONS	
	NUMBER	RATE	NUMBER	RATE
1979				
JANUARY	10,003	1.03	15,445	1.59
FEBRUARY	8,939	.92	10,974	1.13
MARCH	11,823	1.22	13,939	1.44
APRIL	13,010	1.34	12,452	1.28
MAY	16,576	1.70	12,642	1.29
JUNE	28,683	2.93	23,850	2.43
JULY	20,316	2.07	16,911	1.72
AUGUST	21,266	2.18	27,230	2.80
SEPTEMBER	20,269	2.11	34,269	3.57
OCTOBER	20,814	2.16	16,892	1.75
NOVEMBER	14,823	1.53	11,367	1.18
DECEMBER	11,587	1.20	12,000	1.24
1980				
JANUARY	15,754	1.63	19,744	2.05
FEBRUARY	12,841	1.33	12,958	1.34
MARCH	17,794	1.84	15,575	1.61
APRIL	15,226	1.57	12,488	1.29
MAY	18,584	1.91	13,311	1.37
JUNE	35,078	3.55	22,012	2.23
JULY	16,997	1.72	15,140	1.53
AUGUST	19,622	.02	34,671	3.56
SEPTEMBER	25,301	1	38,376	4.00
OCTOBER	23,733	2.05	13,652	1.41

DEPARTMENT OF DEFENSE  
WASHINGTON HEADQUARTERS SERVICES  
DIRECTORATE FOR INFORMATION  
OPERATIONS AND REPORTS

TABLE 8

DEPARTMENT OF DEFENSE  
MONTHLY SEPARATIONS OF DOD DIRECT HIRE CIVILIAN EMPLOYEES BY CAUSE (P33.2)  
WORLDWIDE

CALENDAR YEAR	TOTAL	QUIT	RIF	TERMINATION A/	OTHER B/
1979					
JANUARY	15,445	4,118	131	2,411	8,785
FEBRUARY	10,973	4,056	67	1,740	5,110
MARCH	13,939	5,014	202	2,291	6,432
APRIL	12,452	4,340	455	1,815	5,842
MAY	12,642	4,915	401	1,744	5,582
JUNE	23,850	6,685	295	3,444	13,426
JULY	16,911	6,727	224	2,256	7,704
AUGUST	27,230	14,170	253	4,957	7,850
SEPTEMBER	34,269	13,620	361	11,444	8,844
OCTOBER	16,892	5,915	248	4,847	5,882
NOVEMBER	11,367	4,188	120	1,788	5,271
DECEMBER	12,009	3,945	82	1,849	6,124
1980					
JANUARY	19,744	5,239	152	2,134	12,219
FEBRUARY	12,958	4,247	82	1,441	7,188
MARCH	15,575	4,642	101	1,862	8,970
APRIL	12,488	4,597	87	2,032	5,772
MAY	13,311	5,087	73	2,537	5,614
JUNE	22,012	5,864	121	2,739	13,288
JULY	15,140	6,165	151	2,707	6,117
AUGUST	34,671	15,070	144	7,226	12,231
SEPTEMBER	38,376	13,502	243	14,302	10,329
OCTOBER	13,652	4,812	117	3,967	4,756

A/ TERMINATIONS OF TEMPORARY OR EXCEPTED APPOINTMENTS OR OF PERSONAL SERVICE CONTRACTS.

B/ INCLUDES TRANSFERS, DISCHARGES, DISPLACEMENT, EXTENDED LWOP AND SUSPENSION, DEATH, DISABILITIES AND RETIREMENTS.

DEPARTMENT OF DEFENSE  
WASHINGTON HEADQUARTERS SERVICES  
PERFORMANCE FOR INFORMATION  
SEPARATIONS AND REPORTS