

AD-A151 122

CIVILIAN MANPOWER STATISTICS, SEPTEMBER, FY-80. (U)
WASHINGTON HEADQUARTERS SERVICE (DOD) DIR FOR INFO
OP & RPTS. SEP 80. DIOR/MO4-80/12

VV

UNCLASSIFIED

F/G 5/9

N/L

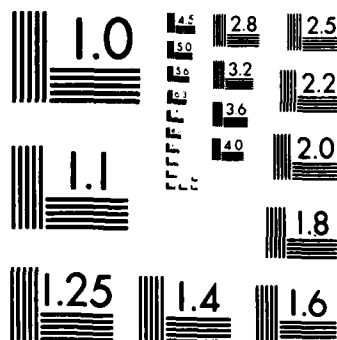
1 OF 1
AD-A151 122



END
FILMED
11/04/85

1 OF 1

AD-A151 122



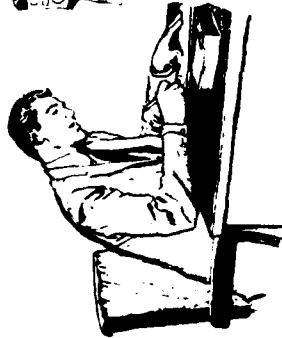
MICROCOPY RESOLUTION TEST CHART
NATIONAL BUREAU OF STANDARDS-1963-A

THIS REPORT IS UNCLASSIFIED AND
ITS DISTRIBUTION IS UNLIMITED

DEPARTMENT OF DEFENSE CIVILIAN MANPOWER STATISTICS



AS OF SEPTEMBER 30, 1980



WASHINGTON HEADQUARTERS SERVICES
Directorate for Information Operations and Reports

FOREWORD

CIVILIAN MANPOWER STATISTICS (CMS) is a monthly publication prepared by the Washington Headquarters Services, Directorate for Information Operations and Reports (WHS/DIOR) of the Office of the Secretary of Defense.

CMS presents audited statistical data pertaining to civilian personnel of the Department of Defense. This publication is produced from the same computerized data base maintained and utilized by WHS/DIOR for the submission of the Monthly Report of Federal Civilian Employment (SF 113-A) to the Office of Personnel Management.

In the past, the tables in this report have been assigned "p" numbers with which many users are familiar. Beginning with this issue, the tables have been renumbered consecutively. For the convenience of those familiar with the "p" number designation, that number has been placed parenthetically in the title.

Requests for additional copies and changes in distribution and addresses should be addressed to the Director, Washington Headquarters Services, Room 3E843, The Pentagon, Washington, DC 20301.

TABLE OF CONTENTS

<u>Number</u>	<u>Title</u>
Table 1	Department of Defense Civilian and Military Personnel, OSD-JCS and Other Defense Activities (P12.2)
Table 2	Department of Defense Direct Hire Civilian Employment (P30.10)
Table 3	Department of Defense Summary of Civilian Employment (P30.11)
Table 4	Department of Defense Civilian Personnel by Military Departments and Defense Agencies (P30.2)
Table 5	Department of Defense Direct Hire Civilian Personnel (P30.3)
Table 6	Department of Defense - Executive Branch/Department of Defense Civilian Employment Comparison (P30.4)
Table 7	Department of Defense Civilian Personnel by Category (P31.0)
Table 8	Department of Defense Direct Hire Civilian Employees by Salaried and Wage Board Status (P31.1)
Table 9	Department of Defense Civilian Personnel by Location (P32.0)
Table 10	Department of Defense Indirect Hire Personnel by Country (P32.6)
Table 11	Department of Defense Monthly Accessions and Separations of Direct Hire Civilian Employees (P33.1)
Table 12	Department of Defense Monthly Separations of Department of Defense Direct Hire Civilian Employees by Cause (P33.2)

TABLE 1

DEPARTMENT OF DEFENSE
CIVILIAN AND MILITARY PERSONNEL
OSD-JCS AND OTHER DEFENSE ACTIVITIES (P12.2)

September 30, 1980

COMPONENT	TOTAL	CIVILIAN	TOTAL	MILITARY	
				OFFICER	ENLISTED
TOTALS	82,787	75,783	7,004	4,150	2,854
OSD & RELATED ACTIVITIES*	4,107	2,406	1,701	1,178	523
DEFENSE AUDIT SUERVICE	385	385	-	-	-
DEFENSE COMMUNICATIONS AGENCY	3,026	1,592	1,434	460	974
DEFENSE CONTRACT AUDIT AGENCY	3,451	3,451	-	-	-
DEFENSE INTELLIGENCE AGENCY	4,306	2,570	1,736	1,115	621
DEFENSE INVESTIGATIVE SERVICE	1,698	1,521	177	88	89
DEFENSE LOGISTICS AGENCY	46,632	45,671	961	797	164
DEFENSE MAPPING AGENCY	8,646	8,209	437	178	259
DEFENSE NUCLEAR AGENCY	1,091	606	485	289	196
DEPARTMENT OF DEFENSE DEPENDENTS SCHOOLS	8,854	8,854	-	-	-
UNIFORMED SERVICES UNIVERSITY OF HEALTH SCIENCES	575	502	73	45	28
DEFENSE AUDIO-VISUAL AGENCY	16	16	-	-	-

* INCLUDES OSD-JCS, AFIS, CHAMPUS, DARPA, DSAA, TRIMIS, USCMA, AND WHS.

DEPARTMENT OF DEFENSE
WASHINGTON HEADQUARTERS SERVICES
DIRECTORATE FOR INFORMATION
OPERATIONS AND REPORTS

TABLE 2

 DEPARTMENT OF DEFENSE
 DIRECT HIRE CIVILIAN EMPLOYMENT (P30.10)A/

COMPONENT	FULL-TIME IN PERMANENT POSITIONS				TOTAL EMPLOYMENT	
	AUG 31, 80	SEP 30, 80	SEP 30, 80 B/	AUG 31, 80	SEP 30, 80	SEP 30, 80 B/
MILITARY FUNCTIONS:						
ARMY	282,487	286,321	292,921	311,781	311,795	306,807
NAVY	288,909	289,267	290,840	306,825	297,984	296,840
AIR FORCE	218,341	220,599	223,910	229,306	230,938	228,910
OSD & RELATED ACTIVITIES*	2,200	2,157	2,408	2,399	2,386	2,569
DEFENSE AUDIT SERVICE	363	377	393	365	379	393
DEFENSE COMMUNICATIONS AGENCY	1,511	1,515	1,589	1,555	1,547	1,612
DEFENSE CONTRACT AUDIT AGENCY	3,400	3,378	3,559	3,437	3,423	3,568
DEFENSE INTELLIGENCE AGENCY	2,510	2,559	2,559	2,532	2,569	2,564
DEFENSE INVESTIGATIVE SERVICE	1,507	1,503	1,540	1,510	1,506	1,540
DEFENSE LOGISTICS AGENCY	44,465	44,399	45,920	45,235	45,169	46,493
DEFENSE MAPPING AGENCY	7,874	8,008	7,997	8,042	8,135	8,037
DEFENSE NUCLEAR AGENCY	583	573	630	596	584	630
DEPARTMENT OF DEFENSE DEPENDENTS SCHOOLS	6,638	6,746	9,022	8,090	8,853	9,802
UNIFORM SERVICES UNIVERSITY OF THE HEALTH SCIENCES	436	449	542	493	502	585
DEFENSE AUDIOVISUAL AGENCY	15	16	N/A	15	16	N/A
TOTAL, MILITARY FUNCTIONS	861,239	867,867	883,830	922,181	915,786	910,350
CIVIL FUNCTIONS	27,846	27,730	N/A	35,016	32,611	N/A
TOTAL DOD	889,085	895,597		957,197	948,397	

A/ OMB CEILING EMPLOYMENT. EXCLUDES NSA AND YOUTH PROGRAMS.

B/ PRESIDENT'S FY80 BUDGET PLAN.

* INCLUDES OSD-JCS, AFIS, CHAMPUS, DARPA, DSAA, TRIMIS, USCSMA AND WHS.

 DEPARTMENT OF DEFENSE
 WASHINGTON HEADQUARTERS SERVICES
 DIRECTORATE FOR INFORMATION
 OPERATIONS AND REPORTS

TABLE 3

 DEPARTMENT OF DEFENSE
 SUMMARY OF CIVILIAN EMPLOYMENT (P30.11)

DEPARTMENT AND FUNCTION	30 SEP 77	30 SEP 78	30 SEP 79	31 JUL 80	31 AUG 80	31 SEP 80
<u>DIRECT HIRE A/</u>						
TOTAL DEPARTMENT OF DEFENSE	972,407	969,293	949,106	969,494	957,197	948,397
MILITARY FUNCTIONS	939,021	935,703	915,764	933,903	922,181	915,786
CIVIL FUNCTIONS	33,386	33,590	33,342	35,591	35,016	32,611
TOTAL ARMY	348,418	349,664	342,811	354,917	346,794	344,403
MILITARY FUNCTIONS	315,037	316,078	309,475	319,330	311,781	311,795
CIVIL FUNCTIONS	33,381	33,586	33,336	35,587	35,013	32,608
TOTAL NAVY	306,668	306,420	299,449	310,594	306,825	297,984
TOTAL AIR FORCE	240,824	237,028	231,844	235,558	229,309	230,941
MILITARY FUNCTIONS	240,819	237,024	231,838	235,554	229,306	230,938
CIVIL FUNCTIONS	5	4	6	4	3	3
TOTAL OTHER DEFENSE ACTIVITIES	76,497	76,181	75,002	68,425	74,269	75,069
<u>INDIRECT HIRE B/</u>						
TOTAL DEPARTMENT OF DEFENSE	83,395	81,048	75,317	73,938	74,275	74,570
ARMY	56,528	55,291	49,646	48,416	48,576	48,713
NAVY	10,944	10,376	10,727	10,667	10,694	10,731
AIR FORCE	14,502	14,067	13,244	13,134	13,278	13,404
OTHER DEFENSE ACTIVITIES	1,421	1,314	1,700	1,721	1,727	1,722

A/ "TOTAL OMB CEILING EMPLOYEES" AS REPORTED OFFICIALLY TO THE OFFICE OF PERSONNEL

MANAGEMENT ON SF 113-A. EXCLUDES YOUTH PROGRAMS.

B/ FOREIGN NATIONALS SUPPORTING U.S. MILITARY FORCES OVERSEAS UNDER AGREEMENTS WITH FOREIGN GOVERNMENTS.

DEPARTMENT OF DEFENSE
 WASHINGTON HEADQUARTERS SERVICES
 DIRECTORATE FOR INFORMATION
 OPERATIONS AND REPORTS

TABLE 4

DEPARTMENT OF DEFENSE
CIVILIAN PERSONNEL BY MILITARY DEPARTMENTS AND DEFENSE AGENCIES (P30.2)

DATE	TOTAL DEPARTMENT OF DEFENSE			OSD-JCS (DIRECT HIRE)	OTHER DEFENSE AGENCIES A/ (DIRECT HIRE)
	TOTAL CIVILIANS	DIRECT HIRE	INDIRECT HIRE		
30 JUN 1957	1,428,809	1,160,915	267,894	1,655	
30 JUN 1958	1,313,790	1,097,095	216,695	1,646	
30 JUN 1959	1,266,650	1,078,178	188,472	1,756	
30 JUN 1960	1,225,004	1,047,120	177,884	1,865	
30 JUN 1961	1,212,602	1,042,407	170,195	1,960	
30 JUN 1962	1,240,669	1,069,543	171,126	1,883	19,574
30 JUN 1963	1,213,384	1,049,765	163,619	2,232	30,891
30 JUN 1964	1,170,066	1,029,756	140,310	2,085	35,711
30 JUN 1965	1,164,226	1,033,775	130,451	2,297	39,981
30 JUN 1966	1,266,679	1,138,130	128,549 B/	2,521	66,406
30 JUN 1967	1,422,945	1,302,605	120,340	2,790	76,344
30 JUN 1968	1,436,039	1,316,977	119,062	2,731	74,521
30 JUN 1969	1,456,404	1,341,587 C/	114,817	2,576	71,399
30 JUN 1970 D/	1,296,738	1,193,784	102,954	2,375	65,377
30 JUN 1971	1,223,456	1,127,237	96,219	2,153	60,698
30 JUN 1972	1,192,596	1,082,657	109,939	2,018	58,697
30 JUN 1973	1,132,914	1,030,965	101,949	1,967	70,965
30 JUN 1974	1,164,484	1,070,004	94,480	1,971	75,455
30 JUN 1975	1,130,706	1,041,829	88,877	2,189	72,518
30 JUN 1976	1,096,259	1,010,261	85,998	E/	73,470
30 SEP 1976	1,081,819	997,473	84,346		77,718
30 SEP 1977	1,065,289	981,894	83,395		77,269
30 SEP 1978	1,061,361	980,313	81,048		77,048
30 SEP 1979	1,035,603	960,286	75,317		75,871
30 SEP 1980	1,034,686	960,116	74,570		75,952

A/ INCLUDED WITH MILITARY DEPARTMENTS AND OSD-JCS PRIOR TO JANUARY 31, 1962.

B/ INCLUDES INDIRECT HIRES OF OTHER DEFENSE AGENCIES BEGINNING APRIL 1966.

C/ INCLUDES NATIONAL GUARD TECHNICIANS WHO BECAME FEDERAL EMPLOYEES ON JANUARY 1, 1969.

D/ YOUTH PROGRAM EMPLOYEES ARE INCLUDED IN CIVILIAN DIRECT HIRE DATA FROM 1964 TO MARCH 1970 AND JANUARY 1974 TO PRESENT.

E/ BEGINNING FEBRUARY 28, 1976, INCLUDED IN OTHER DEFENSE AGENCIES.

TABLE 4 (concluded)

DEPARTMENT OF DEFENSE
CIVILIAN PERSONNEL BY MILITARY DEPARTMENTS AND DEFENSE AGENCIES (P30.2)

TOTAL CIVILIANS	ARMY			NAVY			AIR FORCE		
	DIRECT HIRE	INDIRECT HIRE	TOTAL CIVILIANS	DIRECT HIRE	INDIRECT HIRE	TOTAL CIVILIANS	DIRECT HIRE	INDIRECT HIRE	TOTAL CIVILIANS
599,594	429,217	170,377	410,975	389,717	21,258	416,585	340,326	76,259	416,585
558,004	415,914	142,090	381,451	363,729	17,722	372,689	315,806	56,883	372,689
526,300	405,848	120,452	374,500	357,108	17,392	364,094	313,466	50,628	364,094
503,009	390,046	112,963	365,202	347,760	17,442	354,928	307,449	47,479	354,928
502,326	390,761	111,565	362,512	346,310	16,202	345,804	303,376	42,428	345,804
505,747	393,849	111,898	364,933	348,056	16,877	348,532	306,181	42,351	348,532
484,841	375,690	109,151	360,050	343,970	16,080	335,370	296,982	38,388	335,370
462,818	369,558	93,260	347,038	332,678	14,360	322,414	289,724	32,690	322,414
453,427	366,726	86,701	346,664	333,271	13,393	321,857	291,500	30,357	321,857
490,953	405,544	85,409	370,382	356,744	13,638	336,404	306,915	29,489	336,404
565,100	484,818	80,282	423,567	409,942	13,625	355,130	328,711	26,419	355,130
566,417	486,859	79,558	444,019	430,205	13,814	348,339	322,661	25,678	348,339
577,045	500,877 C/	76,168	447,464	433,870	13,594	357,748	332,865 C/	24,883	357,748
513,019	443,369	69,650	388,102	376,340	11,762	327,670	306,323	21,347	327,670
486,359	421,047	65,312	361,506	350,198	11,308	312,575	293,141	19,434	312,575
479,529	400,502	79,027	352,704	341,543	11,161	299,552	279,897	19,655	299,552
438,459	366,163	72,296	333,983	321,765	12,218	287,540	270,438	17,052	287,540
448,847	382,388	66,459	340,969	329,378	11,591	296,628	280,812	15,816	296,628
442,014	378,937	63,077	330,640	319,719	10,921	282,726	268,466	14,260	282,726
429,354	368,219	61,135	326,389	315,885	10,504	266,196	252,687	13,509	266,196
419,806	360,216	59,590	321,827	311,314	10,513	261,784	248,225	13,559	261,784
407,224	350,696	56,528	321,063	310,119	10,944	258,312	243,810	14,502	258,312
408,494	353,203	55,291	320,256	309,880	10,376	254,249	240,182	14,067	254,249
396,340	346,694	49,646	314,199	303,472	10,727	247,493	234,249	13,244	247,493
397,247	348,534	48,713	313,229	302,498	10,731	246,536	233,132	13,404	246,536

NOTE: DIRECT HIRE CIVILIANS ARE "TOTAL PAID EMPLOYEES" AS REPORTED OFFICIALLY TO THE OFFICE OF PERSONNEL MANAGEMENT ON STANDARD FORM 113-A. INDIRECT HIRE CIVILIANS ARE FOREIGN NATIONALS RENDERING PERSONAL SERVICES TO THE MILITARY DEPARTMENTS UNDER CONTRACTS OR AGREEMENTS WITH FOREIGN GOVERNMENTS. DATA FOR NOVEMBER 30, 1962, THROUGH JUNE 30, 1963 EXCLUDE EMPLOYEES HIRED UNDER THE PUBLIC WORKS ACCELERATION ACT.

DEPARTMENT OF DEFENSE
WASHINGTON HEADQUARTERS SERVICES
DIRECTORATE FOR INFORMATION
OPERATIONS AND REPORTS

TABLE 5

DEPARTMENT OF DEFENSE
DIRECT HIRE CIVILIAN PERSONNEL (P30.3)

DATE	A/ ARMY	NAVY (EXCLUDING COAST GUARD)	A/ AIR FORCE	OSD-JCS & ODA	TOTAL DOD
30 JUN 1938	94,189	69,268			163,457
30 JUN 1939	110,204	85,793			195,997
30 JUN 1940	137,354	118,671			256,025
30 JUN 1941	329,019	227,054			556,073
30 NOV 1941	439,219	283,962			723,181
30 JUN 1942	852,148	432,196			1,284,344
30 JUN 1943	1,545,457	647,763			2,193,220
30 JUN 1944	1,503,214	736,003			2,239,217
30 JUN 1945	1,881,495 B/	746,515			2,628,010 B/
31 JUL 1945	1,843,299	751,916 B/			2,595,215
30 JUN 1946	927,303	488,922			1,416,225
30 JUN 1947	503,213	355,929			859,142
30 SEP 1947	359,429	340,809	135,798	49	836,085
30 JUN 1948	370,684	346,925	152,391	962	870,962
30 JUN 1949	368,935	343,356	166,054	1,530	879,875
28 FEB 1950	309,421	283,504 C/	149,437	1,737	744,099
31 MAR 1950	298,333 C/	293,143	149,586	1,755	742,817 C/
30 JUN 1950	303,599	293,347	154,453	1,750	753,149
30 JUN 1951	521,018	451,586	260,728	2,166	1,235,498
30 JUN 1952	543,853 D/	481,326	309,663	2,253	1,337,095

A/ AIR FORCE DATA PRIOR TO SEPTEMBER 30, 1947 ARE INCLUDED WITH ARMY DATA. THE ALLOCATION OF PERSONNEL BETWEEN ARMY AND AIR FORCE WAS ESTIMATED FOR SEPTEMBER 30, 1947 AND JUNE 30, 1948.

B/ WORLD WAR II PEAK.

C/ POST WORLD WAR II LOW.

D/ KOREAN CONFLICT PEAK.

TABLE 5 (continued)
 DEPARTMENT OF DEFENSE
 DIRECT HIRE CIVILIAN PERSONNEL (P30.3)

DATE	ARMY	NAVY (EXCLUDING COAST GUARD)	AIR FORCE	OSD-JCS & ODA	TOTAL DOD
31 JUL 1952	543,507	482,348 D/	311,366	2,234	1,339,455 D/
31 JAN 1953	536,917	474,662	315,967 D/	2,249	1,329,795
31 JAN 1953 E/	623,421 E/	474,662	326,059 E/	2,249	1,426,391 E/
30 JUN 1953	570,295	448,874	310,913	1,986	1,332,068
30 JUN 1954	495,273	413,134	298,592	1,893	1,208,892
30 JUN 1955	461,986	410,564	312,076	1,954	1,186,580
30 JUN 1956	434,691	394,669	348,230	1,899	1,179,489
30 JUN 1957	429,217	389,717	340,326	1,655	1,160,915
30 JUN 1958	415,914	363,729	315,806	1,646	1,097,095
30 JUN 1959	405,848	357,108	313,466	1,756	1,078,178
30 JUN 1960	390,046	347,760	307,449	1,865	1,047,120
30 JUN 1961	390,761	346,310	303,376	1,960	1,042,407
30 JUN 1962	393,849	348,056	306,181	21,457	1,069,543
30 JUN 1963	375,690	343,970	296,982	33,123	1,049,765
30 JUN 1964	369,558	332,678	289,724 F/	37,796	1,029,756
31 JAN 1965	360,767	325,386 F/	291,038	39,776	1,016,967 F/
28 FEB 1965	360,572 F/	325,649	291,760	39,687	1,017,668
30 JUN 1965	366,726	333,271	291,500	42,278	1,033,775
30 JUN 1966	405,544	356,744	306,915	68,927	1,138,130
30 JUN 1967	484,818	409,942	328,711	79,134 G/	1,302,605

D/ KOREAN CONFLICT PEAK.

E/ REFLECTS CHANGES IN REPORTING OF CERTAIN FOREIGN NATIONALS SERV' DIRECTED BY THE OFFICE OF PERSONNEL MANAGEMENT.

F/ LOW BETWEEN KOREAN CONFLICT AND VIETNAM BUILD-UP.

G/ VIETNAM CONFLICT PEAK.

THE ARMY AND AIR FORCE IN OVERSEAS AREAS AS

TABLE 5 (concluded)
 DEPARTMENT OF DEFENSE
 DIRECT HIRE CIVILIAN PERSONNEL (P30.3)

DATE	ARMY	NAVY (EXCLUDING COAST GUARD)	AIR FORCE	OSD-JCS & ODA	TOTAL DOD
30 JUN 1968	486,859	430,205	322,661	77,252	1,316,977
30 JUN 1969	500,877 G/	433,870 G/	332,865 G/	73,975	1,341,587 G/
30 JUN 1970	443,369	376,340	306,323	67,752	1,193,784
30 JUN 1971	421,047	350,198	293,141	62,851	1,127,237
30 JUN 1972	400,502	341,543	279,897	60,715	1,082,657
30 JUN 1973	366,163	321,765	270,488	72,549	1,030,965
30 JUN 1974	382,388	329,378	280,812	77,496	1,070,074
30 JUN 1975	378,937	319,719	268,466	74,707	1,041,829
30 JUN 1976	368,219	315,885	252,687	73,470	1,010,261
30 SEP 1976	360,216	311,314	248,225	77,718	997,473
30 SEP 1977	350,696	310,119	243,810	77,269	981,894
30 SEP 1978	353,203	309,880	240,182	77,048	980,313
30 SEP 1979	346,694	303,472	234,249	75,871	960,286
30 SEP 1980	348,534	302,498	233,132	75,952	960,116

G/ VIETNAM CONFLICT PEAK.

DEPARTMENT OF DEFENSE
 WASHINGTON HEADQUARTERS SERVICES
 DIRECTORATE FOR INFORMATION
 OPERATIONS AND REPORTS

TABLE 6

DEPARTMENT OF DEFENSE
EXECUTIVE BRANCH/DEPARTMENT OF DEFENSE CIVILIAN EMPLOYMENT COMPARISON (P30.4)

DATE	DEPARTMENT OF DEFENSE		PERCENT OF TOTAL EXECUTIVE BRANCH
	TOTAL EXECUTIVE BRANCH FEDERAL GOVERNMENT	NUMBER	
30 JUN 1944	3,304,300	2,239,217	67.8
30 JUN 1945	3,786,600 A/	2,628,010 A/	69.4
30 JUN 1946	2,665,500	1,416,225	53.1
30 JUN 1947	2,082,300	859,142	41.3
30 JUN 1948	2,044,000	870,962	42.6
30 JUN 1949	2,075,100	879,875	42.4
31 JAN 1950	1,916,000 B/	750,379	39.2
31 MAR 1950	2,057,100	742,817 B/	36.1
30 JUN 1950	1,934,000	753,149	38.9
30 JUN 1951	2,455,900	1,235,498	50.3
30 JUN 1952	2,574,100	1,337,095	51.9
31 JUL 1952	2,577,900 C/	1,339,455 C/	52.0
30 JUN 1953 D/	2,532,200	1,332,068	52.6
30 JUN 1954	2,381,700	1,208,892	50.8
30 JUN 1955	2,371,421	1,186,580	50.0
30 JUN 1956	2,372,001	1,179,489	49.7
30 JUN 1957	2,389,079	1,160,915	48.6
30 JUN 1958	2,355,038	1,097,095	46.6
30 JUN 1959	2,355,027	1,078,178	45.8
30 JUN 1960	2,370,827	1,047,120	44.2

A/ WORLD WAR II PEAK.

B/ POST WORLD WAR II LOW.

C/ KOREAN CONFLICT PEAK.

D/ BEGINNING JUNE 30, 1953, DATA REFLECT CHANGES IN THE REPORTING OF CERTAIN FOREIGN NATIONALS BY THE ARMY AND THE AIR FORCE AS DIRECTED BY THE OFFICE OF PERSONNEL MANAGEMENT.

TABLE 6 (concluded)

EXECUTIVE BRANCH/DEPARTMENT OF DEFENSE CIVILIAN EMPLOYMENT COMPARISON (P30.4)

DATE	TOTAL EXECUTIVE BRANCH FEDERAL GOVERNMENT	DEPARTMENT OF DEFENSE	
		NUMBER	PERCENT OF TOTAL EXECUTIVE BRANCH
30 JUN 1961	2,407,029	1,042,407	43.3
30 JUN 1962	2,484,654	1,069,543	43.0
30 JUN 1963 E/	2,490,295	1,049,765	42.2
30 JUN 1964 E/	2,469,235	1,029,756	41.7
30 JUN 1965	2,496,090	1,033,775	41.4
30 JUN 1966	2,726,136	1,138,126	41.7
30 JUN 1967	2,967,964	1,302,605	43.9
30 JUN 1968	3,019,965	1,316,977	43.6
30 JUN 1969 F/	3,040,129	1,341,587	44.1
30 JUN 1970 G/	2,884,314	1,193,784	41.4
30 JUN 1971	2,822,895	1,127,237	39.9
30 JUN 1972	2,769,848	1,082,657	39.1
30 JUN 1973	2,722,138	1,030,965	37.9
30 JUN 1974 H/	2,847,074	1,070,004	37.6
30 JUN 1975	2,848,014	1,041,829	36.6
30 JUN 1976	2,830,115	1,010,261	35.7
30 SEP 1976	2,798,225	997,473	35.6
30 SEP 1977	2,789,098	981,894	35.2
30 SEP 1978	2,820,301	980,313	34.8
30 SEP 1979	2,822,797	960,286	34.0
31 DEC 1979	2,833,024	967,195	34.1
31 MAR 1980	2,947,137	966,266	32.8
30 JUN 1980	3,065,672	987,890	32.2

E/ EXCLUDES EMPLOYEES HIRED UNDER THE PUBLIC WORKS ACCELERATION ACT.

F/ PRIOR TO 1969, NATIONAL GUARD TECHNICIANS ARE EXCLUDED.

G/ BEGINNING MARCH 1970 THROUGH DECEMBER 31, 1973, EMPLOYEES IN YOUTH PROGRAMS ARE EXCLUDED.

H/ BEGINNING MARCH 1974, EMPLOYEES IN YOUTH PROGRAMS ARE INCLUDED.

DEPARTMENT OF DEFENSE
WASHINGTON HEADQUARTERS SERVICES
DIRECTORATE FOR INFORMATION
OPERATIONS AND REPORTS

TABLE 7
 DEPARTMENT OF DEFENSE
 CIVILIAN PERSONNEL BY CATEGORY (P31.0)
 SEPTEMBER 1980

	ARMY	NAVY	AIR FORCE	OTHER DEFENSE ACTIVITIES	TOTAL DEPT OF DEFENSE
WORLDWIDE TOTAL	397247	313229	246536	77674	1034686
DIRECT HIRE (†)	348534	302498	233132	75952	960116
BY FULL-TIME & PART-TIME					
FULL-TIME	339259	297461	228551	73975	939246
PART-TIME & INTERMITTENT	6786	4502	2525	1499	15312
BY CITIZENSHIP:					
U.S. CITIZENS (††)	332428	289838	226372	75330	923968
FOREIGN NATIONALS	16106	12660	6760	622	36148
BY SALARIED & WAGE BOARD					
SALARIED	233839	169209	144814	64747	612609
WAGE BOARD	114695	133289	68318	11205	347507
INDIRECT HIRE (†††)	48713	10731	13404	1722	74570
TOTAL U.S. CITIZENS	332428	289838	226372	75330	923968
TOTAL FOREIGN NATIONALS	64819	23391	20164	2344	110718

- (†) TOTAL PAID EMPLOYEES AS REPORTED TO THE OFFICE OF PERSONNEL MANAGEMENT ON STANDARD FORM 113A.
 (††) INCLUDES CITIZENS OF U.S. TERRITORIES.
 (†††) FOREIGN NATIONALS SUPPORTING U.S. MILITARY IN OVERSEAS AREAS UNDER CONTRACT/AGREEMENT WITH FOREIGN GOVERNMENTS.

DEPARTMENT OF DEFENSE
 WASHINGTON HEADQUARTERS SERVICES
 DIRECTORATE FOR INFORMATION
 OPERATIONS AND REPORTS

TABLE 8

DEPARTMENT OF DEFENSE
 DIRECT HIRE CIVILIAN EMPLOYEES
 BY SALARIED AND WAGE BOARD STATUS (P31.1) A/
 (IN THOUSANDS)

DATE	ARMY		NAVY		AIR FORCE		OSD-JCS		B/ ODA		C/ DOD		TOTAL
	SALA- RIED	WAGE BOARD	SALA- RIED	WAGE BOARD	SALA- RIED	WAGE BOARD	SALA- RIED	WAGE BOARD	SALA- RIED	WAGE BOARD	SALA- RIED	WAGE BOARD	
30 JUN 1949	164.4	204.5	110.6	232.8	66.5	99.5	1.5				343.1	536.8	879.9
30 JUN 1950	147.3	156.3	100.2	193.1	63.0	91.4	1.8				312.3	440.9	753.1
30 JUN 1951	238.3	282.7	145.3	306.3	110.7	150.1	2.2				496.5	739.0	1235.5
30 JUN 1952	258.0	285.8	155.9	325.4	122.7	187.0	2.3				538.9	798.2	1337.1
30 JUN 1953 D/	242.8	327.5	149.8	299.1	121.6	189.3	2.0				516.2	815.9	1332.1
30 JUN 1954	225.4	269.9	146.9	266.3	119.0	179.6	1.9				493.2	715.7	1208.9
30 JUN 1955	230.3	231.7	144.4	266.1	132.3	179.7	2.0				509.0	677.6	1186.6
30 JUN 1956	226.1	208.6	144.1	250.6	152.5	195.7	1.9	*			524.6	654.9	1179.5
30 JUN 1957	228.5	200.7	145.8	243.9	150.7	189.7	1.6	*			526.6	634.3	1160.9
30 JUN 1958	225.2	190.7	139.5	224.3	145.9	169.9	1.6	*			512.1	585.0	1097.1
30 JUN 1959	218.7	187.1	138.4	218.7	149.2	164.2	1.7	*			508.1	570.1	1078.2
30 JUN 1960	210.3	179.7	136.8	211.0	150.9	156.5	1.8	*			499.9	547.2	1047.1
30 JUN 1961	214.1	176.7	136.0	210.3	153.9	149.4	1.9	*			505.9	536.5	1042.4
30 JUN 1962	213.3	180.5	136.2	211.9	158.4	147.8	1.9	*	15.7	3.9	525.4	544.2	1069.5
30 JUN 1963 E/	206.5	169.2	138.6	205.3	156.0	141.0	2.2	*	24.2	6.7	527.5	522.2	1049.8
30 JUN 1964	211.8	157.8	139.5	193.2	156.1	133.7	2.1	*	26.7	9.0	536.1	493.6	1029.8
30 JUN 1965	213.4	153.3	141.5	191.8	158.9	132.6	2.3	*	31.1	8.9	547.1	486.7	1033.8
30 JUN 1966	231.2	174.3	151.2	205.6	156.5	150.4	2.5	*	52.8	13.6	594.2	543.9	1138.1

* = LESS THAN 50.

A/ "TOTAL PAID EMPLOYEES" AS REPORTED OFFICIALLY TO THE OFFICE OF PERSONNEL MANAGEMENT.

B/ INCLUDED WITH MILITARY DEPARTMENTS AND OSD-JCS PRIOR TO JANUARY 31, 1962.

C/ DETAIL MAY NOT ADD TO TOTALS DUE TO ROUNDING.

D/ BEGINNING JUNE 30, 1953, ARMY & AIR FORCE WAGE BOARD DATA REFLECT CHANGES IN REPORTING OF CERTAIN FOREIGN NATIONALS AS DIRECTED BY THE OFFICE OF PERSONNEL MANAGEMENT.

E/ EXCLUDES EMPLOYEES UNDER PUBLIC WORKS ACCELERATION ACT (NOVEMBER 30, 1962 - JUNE 30, 1963).

TABLE 8 (concluded)

DEPARTMENT OF DEFENSE
 DIRECT HIRE CIVILIAN EMPLOYEES
 BY SALARIED AND WAGE BOARD STATUS (P31.1) A/
 (IN THOUSANDS)

DATE	ARMY		NAVY		AIR FORCE		OSD-JCS		ODA		DOD		C/ WAGE BOARD TOTAL
	SALA-RIED	WAGE BOARD	SALA-RIED	WAGE BOARD	SALA-RIED	WAGE BOARD	SALA-RIED	WAGE BOARD	SALA-RIED	WAGE BOARD	SALA-RIED	WAGE BOARD	
30 JUN 1967	254.9	229.9	175.2	234.7	161.1	167.6	2.8	*	60.3	16.0	654.3	648.3	1302.6
30 JUN 1968	260.9	226.0	190.9	239.3	158.8	163.9	2.7	*	61.3	13.2	674.6	642.4	1317.0
30 JUN 1969 F/	268.8	232.1	194.2	239.7	163.8	169.1	2.6	*	59.0	12.4	688.3	653.3	1341.6
30 JUN 1970 G/	250.9	192.5	180.6	195.7	159.3	147.0	2.4	*	53.4	12.0	646.5	547.3	1193.8
30 JUN 1971	243.4	177.7	175.6	174.6	154.6	138.6	2.1	*	49.4	11.3	625.1	502.2	1127.2
30 JUN 1972	246.4	154.1	172.3	169.3	152.3	127.6	2.0	*	48.3	10.4	621.3	461.4	1082.7
30 JUN 1973	234.1	132.1	168.4	153.4	147.2	123.3	1.9	*	57.3	13.2	608.9	422.0	1031.0
30 JUN 1974	249.3	133.1	179.2	150.1	155.1	125.7	2.0	*	61.2	14.4	646.7	423.3	1070.1
30 JUN 1975	246.9	132.1	175.3	144.4	150.5	118.0	2.2	*	59.6	12.9	634.5	407.3	1041.8
30 JUN 1976	241.3	126.9	173.3	142.6	146.7	105.9	H/		61.0	12.4	622.4	387.9	1010.3
30 SEP 1976	234.6	125.6	170.4	140.9	142.6	105.6			66.2	11.5	613.9	383.6	997.5
30 SEP 1977	231.3	119.3	170.4	139.7	143.5	100.3			65.1	12.1	610.3	371.4	981.7
30 SEP 1978	232.4	120.8	169.5	140.4	149.3	90.8			65.3	11.8	616.5	363.8	980.3
30 SEP 1979	232.1	114.6	168.0	135.5	144.7	89.5			64.0	11.9	608.8	351.5	960.3
30 SEP 1980	233.8	114.7	169.2	133.3	144.8	88.3			64.6	11.2	612.6	347.5	960.1

* = LESS THAN 50.

A/ "TOTAL PAID EMPLOYEES" AS REPORTED OFFICIALLY TO THE OFFICE OF PERSONNEL MANAGEMENT.

C/ DETAIL MAY NOT ADD DUE TO ROUNDING.

F/ INCLUDES NATIONAL GUARD TECHNICIANS WHO BECAME FEDERAL EMPLOYEES ON JANUARY 1, 1969 AND ALL SUBSEQUENT PERIODS.

G/ MARCH 1970 THROUGH DECEMBER 1973 EMPLOYEES IN YOUTH PROGRAM ARE EXCLUDED.

H/ BEGINNING FEBRUARY 28, 1976, INCLUDED IN OTHER DEFENSE ACTIVITIES.

DEPARTMENT OF DEFENSE
 WASHINGTON HEADQUARTERS SERVICES
 DIRECTORATE FOR INFORMATION
 OPERATIONS AND REPORTS

TABLE 9
DEPARTMENT OF DEFENSE
CIVILIAN PERSONNEL BY LOCATION (P32.0)
SEPTEMBER 1980

	ARMY	NAVY	AIR FORCE	OTHER DEFENSE ACTIVITIES	TOTAL DEPT OF DEFENSE
WORLDWIDE TOTAL	397247	313229	246536	77674	1034686
UNITED STATES (DIRECT HIRE)	313671	283122	220520	66155	883468
BY LOCATION					
WASHINGTON, D.C.	25404	33800	6056	13051	78311
REMAINDER OF U.S. (†)	288267	249322	214464	53104	805157
BY SALARIED & WAGE BOARD					
SALARIED	217793	160708	133751	55120	567372
WAGE BOARD	95878	122414	86769	11035	316096
U.S. TERRITORIES (DIRECT HIRE)	1075	4201	883	75	6234
BY CITIZENSHIP:					
U.S. CITIZENS (††)	1074	4169	882	47	6172
FOREIGN NATIONALS	1	32	1	28	62
BY SALARIED & WAGE BOARD					
SALARIED	722	1725	377	63	2887
WAGE BOARD	353	2476	506	12	3347
FOREIGN COUNTRIES	82501	25906	25133	11444	144984
DIRECT HIRE	33788	15175	11729	9722	70414
BY CITIZENSHIP:					
U.S. CITIZENS (††)	17985	2547	5011	9150	34693
FOREIGN NATIONALS	15803	12628	6718	572	35721
BY SALARIED & WAGE BOARD					
SALARIED	15324	6776	10686	9564	42350
WAGE BOARD	18464	8399	1043	158	28064
INDIRECT HIRE(FOREIGN NATIONALS)	48713	10731	13404	1722	74570

(†) INCLUDES ALASKA AND HAWAII
(††) INCLUDES EMPLOYEES WHO ARE U.S. CITIZENS BY
VIRTUE OF CITIZENSHIP IN A U.S. TERRITORY

DEPARTMENT OF DEFENSE
WASHINGTON HEADQUARTERS SERVICES
DIRECTORATE FOR INFORMATION
OPERATIONS AND REPORTS

TABLE 10
 DEPARTMENT OF DEFENSE
 INDIRECT HIRE PERSONNEL BY COUNTRY (P32.6)

SEPTEMBER 30, 1980

COUNTRY	TOTAL	ARMY	NAVY	AIR FORCE	OTHER DEFENSE ACTIVITIES
TOTAL	74,570	48,713	10,731	13,404	1,722
BELGIUM	462	447	-	-	15
GERMANY	48,807	41,416	27	6,113	1,251
GREECE (INCLUDES CRETE)	573	15	117	425	16
JAPAN (INCLUDES OKINAWA)	17,923	3,485	9,391	4,792	255
KOREA	3,104	3,104	-	-	-
MOROCCO	1	-	1	-	-
NETHERLANDS	324	245	-	67	12
PHILIPPINES	1	-	-	-	1
PORTUGAL	1	1	-	-	-
SPAIN	2,102	-	1,130	890	82
UNITED KINGDOM	1,272	-	65	1,117	90

INDIRECT HIRE PERSONNEL ARE FOREIGN NATIONALS SUPPORTING U.S. MILITARY FORCES UNDER CONTRACT OR AGREEMENTS WITH FOREIGN GOVERNMENTS.

DEPARTMENT OF DEFENSE
 WASHINGTON HEADQUARTERS SERVICES
 DIRECTORATE FOR INFORMATION
 OPERATIONS AND REPORTS

TABLE 11
 DEPARTMENT OF DEFENSE
 MONTHLY ACCESSIONS AND SEPARATIONS OF DIRECT HIRE CIVILIAN EMPLOYEES (P33.1)

DATE	ACCESSIONS		SEPARATIONS	
	NUMBER	RATE	NUMBER	RATE
1979				
JANUARY	10,003	1.03	15,445	1.59
FEBRUARY	8,939	.92	10,974	1.13
MARCH	11,823	1.22	13,939	1.44
APRIL	13,010	1.34	12,452	1.28
MAY	16,576	1.70	12,642	1.29
JUNE	28,683	2.93	23,850	2.43
JULY	20,316	2.07	16,911	1.72
AUGUST	21,266	2.18	27,230	2.80
SEPTEMBER	20,269	2.11	34,269	3.57
OCTOBER	20,814	2.16	16,892	1.75
NOVEMBER	14,823	1.53	11,367	1.18
DECEMBER	11,587	1.20	12,000	1.24
1980				
JANUARY	15,754	1.63	19,744	2.05
FEBRUARY	12,841	1.33	12,958	1.34
MARCH	17,794	1.84	15,575	1.61
APRIL	15,226	1.57	12,488	1.29
MAY	18,584	1.91	13,311	1.37
JUNE	35,078	3.55	22,012	2.23
JULY	16,997	1.72	15,140	1.53
AUGUST	19,622	2.02	34,671	3.56
SEPTEMBER	25,301	2.64	38,376	4.00

DEPARTMENT OF DEFENSE
 WASHINGTON HEADQUARTERS SERVICES
 DIRECTORATE FOR INFORMATION
 OPERATIONS AND REPORTS

TABLE 12

DEPARTMENT OF DEFENSE
MONTHLY SEPARATIONS OF DOD DIRECT HIRE CIVILIAN EMPLOYEES BY CAUSE (P33.2)
WORLDWIDE

CALENDAR YEAR	TOTAL	QUIT	RIF	TERMINATION A/	OTHER B/
1979					
JANUARY	15,445	4,118	131	2,411	8,785
FEBRUARY	10,973	4,056	67	1,740	5,110
MARCH	13,939	5,014	202	2,291	6,432
APRIL	12,452	4,340	455	1,815	5,842
MAY	12,642	4,915	401	1,744	5,582
JUNE	23,850	6,685	295	3,444	13,426
JULY	16,911	6,727	224	2,256	7,704
AUGUST	27,230	14,170	253	4,957	7,850
SEPTEMBER	34,269	13,620	361	11,444	8,844
OCTOBER	16,892	5,915	248	4,847	5,882
NOVEMBER	11,367	4,188	120	1,788	5,271
DECEMBER	12,000	3,945	82	1,849	6,124
1980					
JANUARY	19,744	5,239	152	2,134	12,219
FEBRUARY	12,958	4,247	82	1,441	7,188
MARCH	15,575	4,642	101	1,862	8,970
APRIL	12,488	4,597	87	2,032	5,772
MAY	13,311	5,087	73	2,537	5,614
JUNE	22,012	5,864	121	2,739	13,288
JULY	15,140	6,165	151	2,707	6,117
AUGUST	34,671	15,070	144	7,226	12,231
SEPTEMBER	38,376	13,502	243	14,302	10,329

A/ TERMINATIONS OF TEMPORARY OR EXCEPTED APPOINTMENTS OR OF PERSONAL SERVICE CONTRACTS.

B/ INCLUDES TRANSFERS, DISCHARGES, DISPLACEMENT, EXTENDED LWOP AND SUSPENSION, DEATH, DISABILITIES AND RETIREMENTS.

DEPARTMENT OF DEFENSE
WASHINGTON HEADQUARTERS SERVICES
DIRECTORATE FOR INFORMATION
OPERATIONS AND REPORTS

