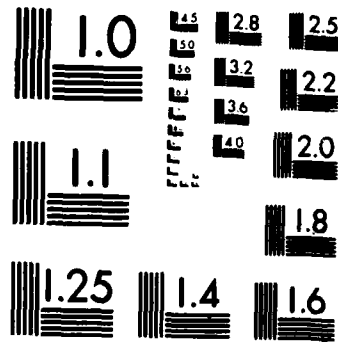


1 OF 1

AD-A151 034



MICROCOPY RESOLUTION TEST CHART
NATIONAL BUREAU OF STANDARDS-1963-A

**THIS REPORT IS UNCLASSIFIED AND
ITS DISTRIBUTION IS UNLIMITED**

Department of Defense
PRIME CONTRACT AWARDS
by
SERVICE CATEGORY
and
**FEDERAL SUPPLY
CLASSIFICATION**

Fiscal Years 1981, 1982, 1983, 1984



**PRIME CONTRACT AWARDS
BY SERVICE CATEGORY
AND FEDERAL SUPPLY CLASSIFICATION**

Fiscal Years 1981, 1982, 1983, and 1984

Department of Defense
Washington Headquarters Services
Directorate for Information
Operations and Reports

FOREWORD

This report is published annually. It presents data on Department of Defense (DOD) prime contract awards by service category and Federal Supply Classification code for fiscal years 1981 through 1984. Data include statistics on both military functions of the DOD and civil functions of the Army Corps of Engineers.

TABLE OF CONTENTS

Introduction	1
Tables:	
Table A. Net Value of Prime Contract Awards Over \$25,000 for Research, Development, Test, and Evaluation, by Procurement Program: FY 1981, 1982, 1983, and 1984	9
Table B. Net Value of Prime Contract Awards Over \$25,000 for Other Services and Construction, by Service Code and Description: FY 1981, 1982, 1983, and 1984	13
Table C. Net Value of Prime Contract Awards Over \$25,000 for Supplies and Equipment, by Federal Supply Classification Code and Description: FY 1981, 1982, 1983, and 1984	35
List of Abbreviations	53

INTRODUCTION

This report presents summary data on Department of Defense (DOD) prime contract awards over \$25,000 by Service Category and Federal Supply Classification (FSC) for Fiscal Years (FY) 1981, 1982, 1983, and 1984.

Data are presented in three tables:

Table A - This table covers awards for research, development, test, and evaluation work (RDT&E). Data are displayed according to standard DOD procurement program categories.

Table B - Data on awards for other services and construction are provided in Table B, arrayed according to Federal Procurement Data System codes and descriptions. This structure, which covers all non-RDT&E services, is composed of 19 groups and almost 300 individual classes. Some of the groups which are shown on Table B include Construction of Structures and Facilities, Operation of Government-Owned Facility, Lease or Rental of Equipment, and Utilities and Housekeeping Services. This system, now employed as a federal requirement, was originally developed for the purpose of reporting the procurement of services other than RDT&E.

Table C - Table C contains data on awards for supplies and equipment, presented according to the appropriate Federal Supply Classification (FSC) code and description. This structure is composed of 78 groups and approximately 630 individual classes. This system was developed primarily for supply management of items known to be in the supply system of the Federal government. Definitions of the classes appear in the *Cataloging Handbook, Federal Supply Classification, Part 1, "Groups and Classes," H2-1*, which may be purchased from the Superintendent of Documents, U.S. Government Printing Office, Washington, D.C. 20402.

While there are many similarities between the FSC codes used in this publication and the Standard Industrial Product Codes (SIC) used by the Census Bureau of the Department of Commerce, the exact points of agreement and disagreement have not been ascertained. In many Census reports, SIC data are based on the primary product of an establishment rather than on the individual products it produces. In addition to code content differences, data from this report and certain Census Bureau reports do not agree as far as the time period covered or the point in time when data are reported. This report provides fiscal year data on contract awards (regardless of the date on which the product is to be delivered). Census Bureau reports contain calendar year figures measuring annual shipment or production, which may take place several years after contract award.

DATA CHARACTERISTICS

The data presented in this report have the following characteristics:

1. Data cover only prime contracts (those awarded directly by the Department of Defense). The large number of subcontracts awarded for basic and intermediate materials and components are not reflected in this report. As an example, most of the steel plating for ships is purchased by defense prime contracts. Only a small portion is purchased directly by DOD (see code 9515). Similarly, a large dollar amount of electronic equipment is purchased by defense contractors who have received prime contracts for missiles and other weapons systems.
2. Detailed information on procurement actions of \$25,000 or less are not included in this report. However, in each of the Fiscal Years 1981 through 1984, from \$7.8 to more than \$12 billion were spent on these small transactions. This report's exclusion of these procurements therefore understates the purchase of commercial type items and services and may overemphasize military hard good items, which are normally purchased in large dollar amounts. Due to this exclusion, as an example, subsistence purchases (FSC Group 89) may be extremely understated. However, information about the makeup of these small purchases does not permit the identification of all categories and commodities and services which are similarly understated.

3. For security reasons, some contracts have been reported with a classification other than the one describing the item purchased. Therefore, data for a number of the Federal Supply Classes presented may be incomplete.
4. Data categorizing contract awards by Service Category and Federal Supply Classification include awards to all types of contractors. In this respect, the coverage differs from other reports published by WHS/DIOR which provide this type of information only on awards to business firms in the United States.
5. Figures in this report are shown in millions and may not add up due to rounding.

HIGHLIGHTS OF FY 1984 DATA

Prime contract awards in FY 1984 totaled \$146.032 million. This is \$5.549 million, or 3.9 percent, more than FY 1983. As shown or tabulated from this data in Table 1 (page 3), awards to business firms increased by \$3.896 million, or 3.2 percent; awards to educational and nonprofit institutions increased by \$462 million, or 20.5 percent; Intragovernmental/Foreign Military Sales (FMS) awards increased by \$195 million, or 1.9 percent; and awards for work outside the United States increased by \$996 million, or 13.7 percent. The relative mix of these four categories remained approximately the same as in FY 1983.

Table 2 (page 3) shows that actions over \$25,000 in FY 1984 totaled 133.571 million. This is an increase of \$5.329 million, or 4.1 percent, over FY 1983.

Table 3 (page 4) provides data by the type of effort for awards over \$25,000. It shows that awards for RDT&E work increased by \$1.976 million, or 12.1 percent; awards for other services and construction increased by \$599 million, or 1.9 percent; and supply and equipment awards increased by \$2.754 million, or 3.3 percent.

Awards for Research, Development, Test, and Evaluation (RDT&E)

Within the RDT&E category during FY 1984, (see page 10) research increased by \$194 million, or 25.4 percent; exploratory development decreased by \$15 million, or 1.1 percent; other development increased by \$1,701 million, or 12.2 percent; while management and support increased by \$97 million, or 26.8 percent. In FY 1984 RDT&E was distributed as follows: research accounted for 5 percent; exploratory development accounted for 7 percent; other development accounted for 85 percent; and management and support accounted for 3 percent. Table 4 (page 4) shows FY 1983 and 1984 comparisons by selected subcategories within the DOD claimant programs.

Other Service and Construction Categories (With Changes of \$100 Million or More)

As shown in Table 5 (page 5), the service category which had the most significant dollar increase of \$100 million or more in FY 1984 was Modification of Equipment; the increase in this category was \$644 million, or 53.8 percent.

Federal Supply Classification (FSC) Groups (With Changes of \$100 million or More)

A comparison of the FSC groups with changes of \$100 million or more (see Table 6, page 5) shows that from FY 1983 to FY 1984, group 15 (Aircraft and Airframe Structural Components) had the most significant dollar increase; \$2,968 million, or 19.7 percent. Group 19 (Ships, Small craft, Pontoons and Floating Docks) had the largest decrease in FY 1984 over FY 1983; it decreased \$2,850 million, or 38.2 percent, but the FY 1983 figure was an increase of \$2,877 million, or 62.6 percent over FY 1982.

TABLE 1

Type of Contractor	FISCAL YEARS (Millions of Dollars)			
	1981	1982	1983	1984
TOTAL AWARDS	\$105,223	\$124,725	\$140,483	\$146,032
Business Firms for Work in the United States	87,195	102,463	121,096	124,992
Educational and Nonprofit Institutions	1,671	1,984	2,248	2,710
Intragovernmental/FMS Work Outside the United States	9,798	12,755	9,903	10,098
	6,559	7,522	7,236	8,232
	Percent of Total			
TOTAL AWARDS	100	100	100	100
Business Firms for Work in the United States	83	82	86	85
Educational and Nonprofit Institutions	2	2	2	2
Intragovernmental/FMS Work Outside the United States	9	10	7	7
	6	6	5	6

TABLE 2

Type of Action	FISCAL YEARS (Millions of Dollars)			
	1981	1982	1983	1984
TOTAL AWARDS	\$105,223	\$124,725	\$140,483	\$146,032
Actions Over \$25,000	97,389	116,660	128,242	133,571
Actions of \$25,000 or Less	7,834	8,065	12,241	12,460
	Percent of Total			
TOTAL AWARDS	100	100	100	100
Actions Over \$25,000	92	94	91	91
Actions of \$25,000 or Less	8	6	9	9

Note: Effective FY 83, the dollar threshold was changed from \$10,000 to \$25,000

TABLE 3

Type of Effort	FISCAL YEARS (Millions of Dollars)			
	1981	1982	1983	1984
TOTAL AWARDS (Over \$25,000)	\$97,389	\$116,660	\$128,242	133,571
RDT&E	10,483	14,882	16,301	18,277
Other Services and Construction	22,847	28,956	30,505	31,104
Supplies and Equipment	64,059	72,821	81,436	84,190
	Percent of Total			
TOTAL AWARDS (Over \$25,000)	100	100	100	100
RDT&E	11	13	13	14
Other Services and Construction	23	25	24	23
Supplies and Equipment	66	62	64	63

Note: Effective FY 83, the dollar threshold was changed from \$10,000 to \$25,000.

TABLE 4

RDT&E by Claimant Program	FISCAL YEAR		CHANGE	
	1983	1984	Amount	Percent
RDT&E by Program - Total	\$16,301	\$18,277	\$1,976	12.1
Aircraft	2,072	2,316	244	11.8
Missiles	6,444	7,296	852	13.2
Ships	409	662	253	61.9
Tanks & Automotive	162	137	-25	-15.4
Weapons	278	564	286	102.9
Ammunition	297	297	0	0
Electronics and Communications Equipment	4,681	4,644	-37	-.8
Services	1,636	2,088	452	27.6
All Other	321	273	-48	-15.0

TABLE 5FISCAL YEARS
(Millions of Dollars)

Service Categories	FISCAL YEAR		CHANGE	
	1983	1984	Amount	Percent
Modification of Equipment	\$1.196	\$1.840	\$644	53.8
Professional, Technical, & Management Services	4.906	5.540	634	12.9
Maintenance, Repair, or Alteration of Real Property	3.285	3.703	418	12.7
Construction of Structures & Facilities	4.461	4.802	341	7.6
Operation of Government-Owned Facility	2.798	3.124	326	11.7
Lease or Rental of Equipment	737	994	257	34.9
Maintenance, Repair, & Rebuilding of Equipment	4.213	4.387	174	4.1
Utilities & Housekeeping Service	3.585	2.914	-671	-18.7
Transportation & Travel	3.479	1.870	-1,609	-46.2

TABLE 6

(Millions of Dollars)

FSC Groups	FISCAL YEAR		CHANGE	
	1983	1984	Amount	Percent
15	\$15,052	\$18,020	\$2,968	19.7
58	8,606	10,080	1,474	17.1
14	6,934	7,904	970	14.0
28	5,172	5,667	495	9.6
70	1,115	1,549	434	38.9
13	2,379	2,802	423	17.8
12	1,533	1,903	370	24.1
23	2,922	3,217	295	10.1
59	1,711	1,989	278	16.2
42	218	331	113	51.8
49	676	787	111	16.4
99	427	256	-171	-40.0
10	1,485	1,172	-313	-21.1
91	9,367	8,933	-434	-4.6
16	2,768	2,191	-577	-20.8
44	1,634	816	-818	-50.1
19	7,469	4,619	-2,850	-38.2

TABLE A

**Net Value of
Prime Contract Awards Over \$25,000
for Research, Development, Test, and
Evaluation, by Procurement Program:
FY 1981, 1982, 1983, and 1984**

Table A. Research, Development, Test, and Evaluation
(Amounts in Thousands of Dollars)

PROCUREMENT PROGRAM	FISCAL YEAR			
	1981	1982	1983	1984
AIRFRAMES AND RELATED ASSEMBLIES AND SPARES				
RESEARCH	635	1,663	22,991	74,919
EXPLORATORY DEVELOPMENT	13,616	76,633	85,154	52,449
OTHER DEVELOPMENT	128,896	2,128,627	1,236,901	1,544,809
MANAGEMENT AND SUPPORT	1,629	12,166	4,782	2,379
TOTAL	144,976	2,219,491	1,349,628	1,674,566
AIRCRAFT ENGINES AND RELATED SPARES AND SPARE PARTS				
RESEARCH	1,401	4,638	4,143	14,036
EXPLORATORY DEVELOPMENT	9,129	21,532	27,666	37,783
OTHER DEVELOPMENT	356,263	351,298	430,076	407,127
MANAGEMENT AND SUPPORT	210	0	227	798
TOTAL	367,003	377,468	462,112	459,744
OTHER AIRCRAFT EQUIPMENT AND SUPPLIES				
RESEARCH	1,880	6,999	6,468	5,817
EXPLORATORY DEVELOPMENT	34,895	41,025	38,903	51,987
OTHER DEVELOPMENT	186,589	260,341	212,015	122,534
MANAGEMENT AND SUPPORT	4,029	690	936	1,269
TOTAL	227,193	309,255	260,322	181,627
TOTAL, AIRCRAFT				
RESEARCH	3,916	13,500	35,602	94,772
EXPLORATORY DEVELOPMENT	57,640	139,190	151,723	142,219
OTHER DEVELOPMENT	671,748	2,740,456	1,678,992	2,074,470
MANAGEMENT AND SUPPORT	5,868	13,056	5,945	4,466
TOTAL	739,172	2,906,204	2,072,262	2,315,927
MISSILE AND SPACE SYSTEMS				
RESEARCH	27,224	13,557	34,012	14,281
EXPLORATORY DEVELOPMENT	276,982	321,627	239,266	224,420
OTHER DEVELOPMENT	4,184,110	5,264,917	6,097,383	6,936,766
MANAGEMENT AND SUPPORT	114,891	46,342	73,074	120,190
TOTAL	4,603,207	5,646,443	6,443,757	7,295,659
SHIPS				
RESEARCH	66,493	24,733	3,077	588
EXPLORATORY DEVELOPMENT	74,057	151,072	106,637	3,167
OTHER DEVELOPMENT	73,700	150,335	296,977	656,079
MANAGEMENT AND SUPPORT	19,214	1,772	2,206	2,393
TOTAL	233,464	327,912	408,897	662,247
TANK-AUTOMOTIVE				
RESEARCH	686	1,541	2,653	3,011
EXPLORATORY DEVELOPMENT	8,090	13,262	15,247	16,512
OTHER DEVELOPMENT	139,204	146,266	144,180	116,618
MANAGEMENT AND SUPPORT	1,873	133	0	405
TOTAL	149,853	160,204	162,080	136,544
WEAPONS				
RESEARCH	1,518	3,306	4,333	5,366
EXPLORATORY DEVELOPMENT	57,553	64,164	79,983	70,970
OTHER DEVELOPMENT	132,470	199,551	189,347	482,665
MANAGEMENT AND SUPPORT	16,815	1,415	4,197	5,143
TOTAL	208,356	268,436	277,860	564,144

**Table A. Research, Development, Test, and Evaluation
(Concluded)
(Amounts in Thousands of Dollars)**

PROCUREMENT PROGRAM	FISCAL YEAR			
	1981	1982	1983	1984
AMMUNITION				
RESEARCH	13,835	15,950	15,040	24,700
EXPLORATORY DEVELOPMENT	19,514	16,129	29,461	11,599
OTHER DEVELOPMENT	258,260	244,662	246,723	256,616
MANAGEMENT AND SUPPORT	1,047	1,495	4,165	2,107
TOTAL	292,676	278,256	297,399	297,224
ELECTRONICS AND COMMUNICATION EQUIPMENT				
RESEARCH	73,615	76,696	75,641	94,965
EXPLORATORY DEVELOPMENT	305,254	350,862	403,767	396,577
OTHER DEVELOPMENT	2,110,034	3,049,457	4,127,024	4,041,750
MANAGEMENT AND SUPPORT	92,636	87,076	74,913	110,666
TOTAL	2,561,939	3,534,093	4,681,365	4,643,966
SERVICES				
RESEARCH	470,390	510,639	569,654	666,992
EXPLORATORY DEVELOPMENT	248,604	169,777	163,273	314,753
OTHER DEVELOPMENT	547,025	578,752	695,426	676,977
MANAGEMENT AND SUPPORT	206,426	236,977	167,533	207,112
TOTAL	1,474,447	1,514,145	1,635,666	2,067,634
ALL OTHER				
RESEARCH	16,276	24,960	22,592	29,683
EXPLORATORY DEVELOPMENT	33,376	39,037	51,413	65,513
OTHER DEVELOPMENT	116,907	165,396	237,402	171,397
MANAGEMENT AND SUPPORT	13,027	15,122	10,005	6,637
TOTAL	179,590	244,535	321,412	273,430
TOTAL				
RESEARCH	694,155	664,904	762,604	856,556
EXPLORATORY DEVELOPMENT	1,061,072	1,265,140	1,260,632	1,245,750
OTHER DEVELOPMENT	6,233,476	12,536,614	13,915,436	15,615,560
MANAGEMENT AND SUPPORT	473,999	375,390	362,026	459,149
TOTAL RDT+E	10,462,704	14,662,246	16,300,900	16,277,017

TABLE B

**Net Value of
Prime Contract Awards Over \$25,000
for Other Services and Construction,
by Service Code and Description:
FY 1981, 1982, 1983, and 1984**

Table B. Summary of Other Services and Construction
(Amounts in Thousands)

SERVICE CODE	DESCRIPTION	FISCAL YEAR			
		1981	1982	1983	1984
F	NATURAL RESOURCES MANAGEMENT	23,879	18,816	43,386	20,893
G	SOCIAL SERVICES	4,908	3,557	3,181	48,488
H	QUALITY CONTROL, TESTING & INSPECTION SERVICE	33,856	113,706	139,660	208,401
J	MAINTENANCE, REPAIR & REBUILDING OF EQUIPMENT	3,653,540	4,841,504	4,212,670	4,387,196
K	MODIFICATION OF EQUIPMENT	865,846	949,425	1,196,343	1,839,791
L	TECHNICAL REPRESENTATIVE SERVICES	564,265	556,288	659,056	700,830
M	OPERATION OF GOVERNMENT OWNED FACILITY	2,210,745	2,466,250	2,797,578	3,124,330
N	INSTALLATION OF EQUIPMENT	248,358	220,264	263,373	313,278
P	SALVAGE SERVICE	15,388	18,048	30,885	45,237
Q	MEDICAL SERVICE	58,727	282,357	108,373	42,020
R	PROFESSIONAL, TECHNICAL & MANAGEMENT SERVICES	3,266,023	4,788,410	4,908,081	6,839,738
S	UTILITIES & HOUSEKEEPING SERVICES	2,382,735	3,431,852	3,585,104	2,814,423
T	PHOTOGRAPHIC, MAPPING, PRINTING & PUBLICATION SVC	106,652	102,104	113,022	136,557
U	TRAINING SERVICES	662,856	351,747	413,383	383,052
V	TRANSPORTATION & TRAVEL	1,177,519	1,696,568	3,479,433	1,870,235
W	LEASE OR RENTAL OF EQUIPMENT	569,402	719,147	736,678	983,882
X	LEASE OR RENTAL OF FACILITIES	48,515	77,468	73,981	80,322
Y	CONSTRUCTION OF STRUCTURES & FACILITIES	4,551,556	5,392,210	4,460,908	4,802,488
Z	MAINTENANCE, REPAIR OR ALTERATION OF REAL PROPERTY	2,424,166	2,928,585	3,284,846	3,703,111
	TOTAL OTHER SERVICES AND CONSTRUCTION	22,846,534	28,956,102	30,505,481	31,103,953

Table B. Other Services and Construction

(Amounts in Thousands)

SERVICE CODE	DESCRIPTION	FISCAL YEAR			
		1981	1982	1983	1984
F	NATURAL RESOURCES MANAGEMENT				
F001	AERIAL FERTILIZATION - SPRAYING	200	260	0	345
F002	AERIAL SEEDING	0	0	0	0
F003	FOREST-RANGE FIRE SUPPRESSION	575	724	616	692
F004	FOREST-RANGE FIRE REHABILITATION	NA	NA	NA	1,144
F005	FOREST TREE PLANTING	151	95	430	258
F006	LAND TREATMENT PRACTICES - PLOWING ETC	6,517	4,041	3,570	518
F007	RANGE SEEDING - GROUND EQUIPMENT	44	0	26	137
F008	RECREATION SITE MAINTENANCE/NON-CONSTR	2,057	2,690	3,027	3,567
F009	SEED COLLECTION-PRODUCTION	0	0	145	0
F010	SEEDLING PRODUCTION-TRANSPLANTING	25	77	0	0
F011	SURFACE MINING RECLAMATION/NON-CONSTR	0	0	0	0
F012	SURVEY LINE CLEARING	66	69	66	0
F014	TREE THINNING	209	161	-221	-60
F015	WELL DRILLING - EXPLORATORY	146	980	1,199	296
F016	WILDHORSE-BURRO MANAGEMENT	NA	NA	NA	55
F018	OTHER RANGE-FOREST IMPROVEMENT/NON-CONST	0	222	25	48
F019	OTHER WILDLIFE MANAGEMENT	2,457	3,073	3,148	2,957
F099	OTHER NATURAL RESOURCES MANAGEMENT	11,430	6,204	31,331	10,936
F	TOTAL NATURAL RESOURCES MANAGEMENT	23,679	16,616	43,386	20,693
G	SOCIAL SERVICES				
G001	CARE OF REMAINS AND/OR FUNERAL SERVICES	624	46	0	0
G002	CHAPLAIN SERVICES	277	368	479	329
G003	RECREATIONAL SERVICES	156	606	306	596
G004	REHABILITATION - SOCIAL	2,054	350	507	405
G007	GOVERNMENT HEALTH INSURANCE	NA	NA	NA	40,467
G008	OTHER GOVERNMENT INSURANCE	NA	NA	64	354
G099	OTHER SOCIAL SERVICES	1,795	2,163	1,625	6,047
G	TOTAL SOCIAL SERVICES	4,908	3,657	3,181	46,466
H	QUALITY CONTROL, TESTING & INSPECTION SERVICE				
H110	QUALITY CONTROL SV/WEAPONS	636	0	116	0
H111	QUALITY CONTROL SV/NUCLEAR ORDNANCE	0	0	0	93
H112	QUALITY CONTROL SV/FIRE CONTROL EQUIP	12	0	21,132	24,003
H114	QUALITY CONTROL SV/GUIDED MISSILES	246	6,699	94,124	66,519
H115	QUALITY CONTROL SV/AIRCRAFT	0	0	0	0
H116	QUALITY CONTROL SV/AIRCRAFT COMPONENTS	NA	NA	200	0
H117	QUALITY CONTROL SV/AIRCRAFT GROUND EQUIP	NA	NA	163	175
H118	QUALITY CONTROL SV/SPACE VEHICLES	136	0	0	0
H119	QUALITY CONTROL SV/SHIPS-SHL CRAFT-DOCKS	0	50,646	24,651	21,676
H120	QUALITY CONTROL SV/MARINE EQUIP	0	13	38	0
H122	QUALITY CONTROL SV/RAILWAY EQUIP	12	0	0	0
H123	QUALITY CONTROL SV/VEHICLES-TRAILERS-CYC	25	0	0	183
H126	QUALITY CONTROL SV/ENGINES & TURBINES	NA	66	446	0
H131	QUALITY CONTROL SV/BEARINGS	NA	21	0	0
H140	QUALITY CONTROL SV/ROPE-CABLE-CHAIN	11	42	0	0
H142	QUALITY CONTROL SV/FIRE-RESCUE-SAFETY EQ	-52	0	0	0
H145	QUALITY CONTROL SV/PLUMBING-HEATING EQ	0	0	0	0
H152	QUALITY CONTROL SV/MEASURING TOOLS	0	0	0	0
H156	QUALITY CONTROL SV/COMMUNICATION EQUIP	1,632	483	166	206
H159	QUALITY CONTROL SV/ELECTRICAL-ELCT EQUIP	-82	0	0	0
H163	QUALITY CONTROL SV/ALARM & SIGNAL SYSTEM	NA	NA	109	0
H165	QUALITY CONTROL SV/MEDICAL & DENTAL EQ	NA	20	0	0
H166	QUALITY CONTROL SV/INSTRUMENTS & LAB EQ	NA	NA	107	166
H168	QUALITY CONTROL SV/CHEMICAL PRODUCTS	0	0	0	0
H169	QUALITY CONTROL SV/TRAINING AIDS-DEVICES	NA	NA	4,936	6,187
H170	QUALITY CONTROL SV/ADP EQUIP & SUPPLIES	1,140	2,275	764	1,106
H191	QUALITY CONTROL SV/FUELS-LUBRICANTS-OILS	0	60	0	0
H195	QUALITY CONTROL SV/METAL BARS & SHEETS	NA	666	289	-76
H199	QUALITY CONTROL SV/MISCELLANEOUS EQUIP	29	336	365	667
H1	TOTAL QUALITY CONTROL SERVICES	3,739	61,441	147,640	142,613
H210	EQUIP TESTING SVCS/WEAPONS	1,933	14,014	4,605	4,286
H212	EQUIP TESTING SVCS/FIRE CONTROL EQUIP	3,349	647	0	3,156
H213	EQUIP TESTING SVCS/AMMO & EXPLOSIVES	160	3,392	1,745	797
H214	EQUIP TESTING SVCS/GUIDED MISSILES	2,639	960	3,630	6,360
H215	EQUIP TESTING SVCS/AIRCRAFT	87	114	2,647	2,061

**Table B. Other Services and Construction
(Continued)
(Amounts in Thousands)**

SERVICE CODE	DESCRIPTION	FISCAL YEAR			
		1981	1982	1983	1984
H	QUALITY CONTROL, TESTING & INSPECTION SERVICE				
H216	EQUIP TESTING SVCS/AIRCRAFT COMPONENTS	33	287	1,688	609
H217	EQUIP TESTING SVCS/AIRCRAFT GROUND EQUIP	0	0	0	0
H218	EQUIP TESTING SVCS/SPACE VEHICLES	NA	NA	NA	491
H219	EQUIP TESTING SVCS/SHIPS-SML CRAFT-DOCKS	208	253	-59	1,083
H220	EQUIP TESTING SVCS/MARINE EQUIP	11	707	222	167
H223	EQUIP TESTING SVCS/VEHICLES-TRAILERS-CYC	721	340	120	0
H226	EQUIP TESTING SVCS/TIRES & TUBES	20	-20	0	0
H228	EQUIP TESTING SVCS/ENGINES & TURBINES	30	859	449	225
H230	EQUIP TESTING SVCS/MECH POWER TRANS EQ	18	0	0	234
H234	EQUIP TESTING SVCS/METALWORK MACHINERY	0	0	0	0
H236	EQUIP TESTING SVCS/INDUSTRIAL MACHINERY	31	876	0	0
H238	EQUIP TESTING SVCS/CONSTRUCTION EQUIP	0	0	0	0
H240	EQUIP TESTING SVCS/ROPE-CABLE-CHAIN	0	21	37	188
H242	EQUIP TESTING SVCS/FIRE-RESCUE-SAFETY EQ	11	124	38	38
H243	EQUIP TESTING SVCS/PUMPS & COMPRESSORS	147	68	0	0
H244	EQUIP TESTING SVCS/FURNACE-NUCLEAR REAC	NA	NA	NA	72
H245	EQUIP TESTING SVCS/PLUMBING-HEATING EQ	38	0	0	0
H246	EQUIP TESTING SVCS/WATER PURIFICATION EQ	0	0	0	0
H247	EQUIP TESTING SVCS/PIPE-TUBING-HOSE	0	0	0	0
H248	EQUIP TESTING SVCS/VALVES	149	0	0	0
H249	EQUIP TESTING SVCS/MAINTENANCE SHOP EQ	0	0	0	507
H252	EQUIP TESTING SVCS/MEASURING TOOLS	17	0	89	0
H254	EQUIP TESTING SVCS/PREFAB STRUCTURES	NA	48	0	0
H256	EQUIP TESTING SVCS/CONSTRUCTION MATERIAL	124	213	36	30
H258	EQUIP TESTING SVCS/COMMUNICATION EQUIP	1,304	391	4,981	14,519
H259	EQUIP TESTING SVCS/ELECTRICAL-ELCT EQUIP	978	447	353	1,264
H281	EQUIP TESTING SVCS/POWER DISTRIBUTION EQ	98	32	132	50
H283	EQUIP TESTING SVCS/ALARM & SIGNAL SYSTEM	NA	25	0	0
H286	EQUIP TESTING SVCS/MEDICAL & DENTAL EQ	0	0	0	0
H288	EQUIP TESTING SVCS/INSTRUMENTS & LAB EQ	302	290	172	0
H287	EQUIP TESTING SVCS/PHOTOGRAPHIC EQUIP	97	322	0	60
H288	EQUIP TESTING SVCS/CHEMICAL PRODUCTS	362	0	30	438
H289	EQUIP TESTING SVCS/TRAINING AIDS-DEVICES	NA	NA	233	143
H270	EQUIP TESTING SVCS/ADP EQUIP & SUPPLIES	587	402	257	273
H280	EQUIP TESTING SVCS/BRUSHES-PAINTS-SEALER	0	0	0	41
H281	EQUIP TESTING SVCS/CONTAINERS-PACKAGING	0	0	0	0
H284	EQUIP TESTING SVCS/CLOTHING - INDIVID EQ	NA	311	0	643
H291	EQUIP TESTING SVCS/FUELS-LUBRICANTS-OILS	1,365	1,009	1,297	1,444
H294	EQUIP TESTING SVCS/NONMETALIC CRUDE MAT	14	0	0	0
H295	EQUIP TESTING SVCS/METAL BARS & SHEETS	25	17	0	0
H296	EQUIP TESTING SVCS/ORES & MINERALS	0	12	0	0
H299	EQUIP TESTING SVCS/MISCELLANEOUS EQUIP	2,087	2,226	3,139	1,611
H2	TOTAL EQUIPMENT & MATERIALS TESTING	16,980	28,187	25,821	39,989
H313	INSPECTION SERVICE/AMMO & EXPLOSIVES	0	0	139	36
H314	INSPECTION SERVICE/GUIDED MISSILES	-7	125	90	235
H315	INSPECTION SERVICE/AIRCRAFT	615	664	299	0
H317	INSPECTION SERVICE/AIRCRAFT COMPONENTS	252	110	-59,185	0
H317	INSPECTION SERVICE/AIRCRAFT GROUND EQUIP	12	55	41	0
H319	INSPECTION SERVICE/SHIPS-SML CRAFT-DOCKS	649	534	354	0
H320	INSPECTION SERVICE/MARINE EQUIP	NA	10	0	236
H322	INSPECTION SERVICE/RAILWAY EQUIP	NA	54	0	0
H323	INSPECTION SERVICE/VEHICLES-TRAILERS-CYC	300	389	0	0
H325	INSPECTION SERVICE/VEHICULAR EQUIP	0	0	0	0
H328	INSPECTION SERVICE/ENGINES & TURBINES	37	0	0	0
H329	INSPECTION SERVICE/ENGINE ACCESSORIES	0	0	0	82
H332	INSPECTION SERVICE/WOODWORKING MACHINERY	113	0	0	0
H336	INSPECTION SERVICE/INDUSTRIAL MACHINERY	0	51	0	55
H338	INSPECTION SERVICE/CONSTRUCTION EQUIP	24	0	30	0
H339	INSPECTION SERVICE/MATERIALS HANDLING EQ	20	18	0	0
H340	INSPECTION SERVICE/ROPE-CABLE-CHAIN	98	0	0	0
H341	INSPECTION SERVICE/REFRIGERATION - AC EQ	373	0	0	0
H342	INSPECTION SERVICE/FIRE-RESCUE-SAFETY EQ	143	48	36	38
H343	INSPECTION SERVICE/PUMPS & COMPRESSORS	0	0	0	0
H344	INSPECTION SERVICE/FURNACE-NUCLEAR REAC	107	257	98	261
H345	INSPECTION SERVICE/PLUMBING-HEATING EQ	0	0	0	0
H346	INSPECTION SERVICE/WATER PURIFICATION EQ	109	94	89	74
H347	INSPECTION SERVICE/PIPE-TUBING-HOSE	NA	NA	85	0
H348	INSPECTION SERVICE/VALVES	77	0	0	0
H349	INSPECTION SERVICE/MAINTENANCE SHOP EQ	0	855	0	131
H352	INSPECTION SERVICE/MEASURING TOOLS	0	0	0	0
H354	INSPECTION SERVICE/PREFAB STRUCTURES	NA	29	0	0
H356	INSPECTION SERVICE/COMMUNICATION EQUIP	265	65	26	0
H359	INSPECTION SERVICE/ELECTRICAL-ELCT EQUIP	428	592	337	333
H361	INSPECTION SERVICE/POWER DISTRIBUTION EQ	0	42	0	0

Table B. Other Services and Construction
(Continued)
(Amounts in Thousands)

SERVICE CODE	DESCRIPTION	FISCAL YEAR			
		1981	1982	1983	1984
H	QUALITY CONTROL, TESTING & INSPECTION SERVICE				
H365	INSPECTION SERVICE/MEDICAL & DENTAL EQ	0	0	0	0
H366	INSPECTION SERVICE/INSTRUMENTS & LAB EQ	NA	NA	NA	50
H369	INSPECTION SERVICE/TRAINING AIDS-DEVICES	0	0	0	0
H370	INSPECTION SERVICE/ADP EQUIP & SUPPLIES	0	0	2,160	0
H375	INSPECTION SERVICE/OFFICE SUPPLIES	0	0	0	0
H379	INSPECTION SERVICE/CLEANING EQUIP	0	0	0	0
H381	INSPECTION SERVICE/CONTAINERS-PACKAGING	NA	11	0	0
H389	INSPECTION SERVICE/SUBSISTENCE	0	0	0	0
H391	INSPECTION SERVICE/FUELS-LUBRICANTS-OILS	35	0	0	115
H399	INSPECTION SERVICE/MISCELLANEOUS EQUIP	53	38	636	1,074
H3	TOTAL INSPECTION SERVICES	3,703	4,061	-54,585	2,702
H999	MISCELLANEOUS TESTING AND INSPECTION SVC	9,234	20,017	20,784	22,797
H	TOTAL QUALITY CONTROL, TESTING & INSPECTION SERVICE	33,656	113,706	139,690	206,401
J	MAINTENANCE, REPAIR & REBUILDING OF EQUIPMENT				
J010	MAINT-REPAIR OF EQ/WEAPONS	41,089	34,365	18,800	24,962
J011	MAINT-REPAIR OF EQ/NUCLEAR ORDNANCE	152	18,020	78	260
J012	MAINT-REPAIR OF EQ/FIRE CONTROL EQUIP	39,095	50,872	62,216	74,031
J013	MAINT-REPAIR OF EQ/AMMO & EXPLOSIVES	1,610	2,292	4,297	29,657
J014	MAINT-REPAIR OF EQ/GUIDED MISSILES	230,079	366,034	355,621	318,715
J015	MAINT-REPAIR OF EQ/AIRCRAFT	621,927	1,331,783	673,234	1,059,679
J016	MAINT-REPAIR OF EQ/AIRCRAFT COMPONENTS	254,763	167,162	218,271	185,405
J017	MAINT-REPAIR OF EQ/AIRCRAFT GROUND EQUIP	5,561	15,144	21,952	14,062
J018	MAINT-REPAIR OF EQ/SPACE VEHICLES	2,269	2,500	2,420	10,243
J019	MAINT-REPAIR OF EQ/SHIPS-SML CRAFT-DOCKS	1,152,432	1,374,241	1,136,788	1,053,359
J020	MAINT-REPAIR OF EQ/MARINE EQUIP	22,879	19,044	39,935	14,313
J022	MAINT-REPAIR OF EQ/RAILWAY EQUIP	3,054	9,025	9,327	5,662
J023	MAINT-REPAIR OF EQ/VEHICLES-TRAILERS-CYC	31,298	48,658	53,985	39,573
J024	MAINT-REPAIR OF EQ/TRACTORS	1,654	2,274	10,577	2,977
J025	MAINT-REPAIR OF EQ/VEHICULAR EQUIP	3,670	4,427	4,230	3,292
J026	MAINT-REPAIR OF EQ/TIRES & TUBES	2,049	2,165	1,508	439
J028	MAINT-REPAIR OF EQ/ENGINES & TURBINES	165,668	360,180	199,620	165,450
J029	MAINT-REPAIR OF EQ/ENGINE ACCESSORIES	16,227	22,765	24,256	29,171
J030	MAINT-REPAIR OF EQ/MECH POWER TRANS EQ	1,318	21,342	3,668	1,457
J031	MAINT-REPAIR OF EQ/BEARINGS	133	218	613	37
J032	MAINT-REPAIR OF EQ/WOODWORKING MACHINERY	0	42	41	0
J034	MAINT-REPAIR OF EQ/METALWORK MACHINERY	8,964	6,336	33,342	14,114
J035	MAINT-REPAIR OF EQ/SERVICE & TRADE EQUIP	363	456	456	261
J036	MAINT-REPAIR OF EQ/INDUSTRIAL MACHINERY	3,495	27,362	14,083	27,275
J037	MAINT-REPAIR OF EQ/AGRICULTURE MACHINERY	55	0	60	87
J038	MAINT-REPAIR OF EQ/CONSTRUCTION EQUIP	4,822	2,680	1,340	2,490
J039	MAINT-REPAIR OF EQ/MATERIALS HANDLING EQ	13,656	12,460	16,950	6,635
J040	MAINT-REPAIR OF EQ/ROPE CABLE-CHAIN	250	4,292	95	0
J041	MAINT-REPAIR OF EQ/REFRIGERATION - AC EQ	13,663	6,406	6,768	7,762
J042	MAINT-REPAIR OF EQ/FIRE-RESCUE-SAFETY EQ	2,339	3,972	3,900	4,392
J043	MAINT-REPAIR OF EQ/PUMPS & COMPRESSORS	7,266	5,523	4,651	12,329
J044	MAINT-REPAIR OF EQ/FURNACE-NUCLEAR REAC	3,040	995	20,681	5,760
J045	MAINT-REPAIR OF EQ/PLUMBING-HEATING EQ	4,341	6,596	4,469	5,120
J046	MAINT-REPAIR OF EQ/WATER PURIFICATION EQ	1,003	250	650	1,451
J047	MAINT-REPAIR OF EQ/PIPE-TUBING-HOSE	2,960	4,276	714	125
J048	MAINT-REPAIR OF EQ/VALVES	1,269	1,954	1,012	1,360
J049	MAINT-REPAIR OF EQ/MAINTENANCE SHOP EQ	32,931	27,922	17,551	10,375
J051	MAINT-REPAIR OF EQ/HAND TOOLS	29	24	27	26
J052	MAINT-REPAIR OF EQ/MEASURING TOOLS	170	794	428	1,320
J053	MAINT-REPAIR OF EQ/HARDWARE & ABRASIVES	35	159	368	0
J054	MAINT-REPAIR OF EQ/PREFAB STRUCTURES	511	292	133	0
J056	MAINT-REPAIR OF EQ/CONSTRUCTION MATERIAL	240	692	13,429	1,523
J058	MAINT-REPAIR OF EQ/COMMUNICATION EQUIP	253,176	315,160	457,919	595,592
J059	MAINT-REPAIR OF EQ/ELECTRICAL-ELCT EQUIP	149,665	159,413	150,201	138,769
J061	MAINT-REPAIR OF EQ/POWER DISTRIBUTION EQ	6,193	3,566	3,266	3,811
J062	MAINT-REPAIR OF EQ/LIGHTING FIXTURES	125	50	64	66
J063	MAINT-REPAIR OF EQ/ALARM & SIGNAL SYSTEM	2,505	2,626	2,026	2,502
J065	MAINT-REPAIR OF EQ/MEDICAL & DENTAL EQ	3,970	5,265	5,265	7,517
J066	MAINT-REPAIR OF EQ/INSTRUMENTS & LAB EQ	56,501	97,529	93,734	61,367
J067	MAINT-REPAIR OF EQ/PHOTOGRAPHIC EQUIP	1,146	1,977	2,547	3,069
J068	MAINT-REPAIR OF EQ/CHEMICAL PRODUCTS	0	0	27	378
J069	MAINT-REPAIR OF EQ/TRAINING AIDS-DEVICES	4,667	5,475	12,976	31,667
J070	MAINT-REPAIR OF EQ/ADP EQUIP & SUPPLIES	151,682	164,470	225,920	237,325
J071	MAINT-REPAIR OF EQ/FURNITURE	4,425	3,709	2,424	3,222
J072	MAINT-REPAIR OF EQ/HOUSEHOLD FURNISHINGS	13,273	14,005	4,265	16,519

**Table B. Other Services and Construction
(Continued)
(Amounts in Thousands)**

SERVICE CODE	DESCRIPTION	FISCAL YEAR			
		1981	1982	1983	1984
J	MAINTENANCE, REPAIR & REBUILDING OF EQUIPMENT				
J073	MAINT-REPAIR OF EQ/FOOD PREP-SERVING EQ	561	2,207	6,663	1,266
J074	MAINT-REPAIR OF EQ/OFFICE MACHINES	15,848	21,145	15,081	21,221
J075	MAINT-REPAIR OF EQ/OFFICE SUPPLIES	238	597	386	369
J076	MAINT-REPAIR OF EQ/BOOKS-MAPS-PUBS	161	240	132	0
J077	MAINT-REPAIR OF EQ/MUSICAL INST-RADIO-TV	46	228	254	86
J078	MAINT-REPAIR OF EQ/RECREATIONAL EQUIP	166	434	302	347
J079	MAINT-REPAIR OF EQ/CLEANING EQUIP	108	44	111	62
J080	MAINT-REPAIR OF EQ/BRUSHES-PAINTS-SEALER	147	33	800	293
J081	MAINT-REPAIR OF EQ/CONTAINERS-PACKAGING	2,290	755	298	56
J083	MAINT-REPAIR OF EQ/TEXTILES-LEATHER-FURS	511	647	1,489	1,443
J084	MAINT-REPAIR OF EQ/CLOTHING - INDIVID EQ	77	85	684	184
J085	MAINT-REPAIR OF EQ/TOILETRIES	NA	NA	47	0
J088	MAINT-REPAIR OF EQ/SUBSISTENCE	200	0	0	0
J091	MAINT-REPAIR OF EQ/FUELS-LUBRICANTS-OILS	95	1,330	245	94
J093	MAINT-REPAIR OF EQ/NONMETALIC FAB MAT	0	0	0	0
J094	MAINT-REPAIR OF EQ/NONMETALIC CRUDE MAT	0	0	0	0
J095	MAINT-REPAIR OF EQ/METAL BARS & SHEETS	1,333	550	495	-163
J096	MAINT-REPAIR OF EQ/ORES & MINERALS	15	0	0	0
J099	MAINT REPAIR/REBUILD OF EQUIPMENT	63,966	36,464	32,780	94,653
J	TOTAL MAINTENANCE, REPAIR & REBUILDING OF EQUIPMENT	3,653,540	4,641,504	4,212,670	4,367,195
K	MODIFICATION OF EQUIPMENT				
K010	MODIFICATION OF EQ/WEAPONS	22,510	15,719	30,367	7,367
K011	MODIFICATION OF EQ/NUCLEAR ORDNANCE	NA	NA	NA	-237
K012	MODIFICATION OF EQ/FIRE CONTROL EQUIP	9,405	797	631	23,208
K013	MODIFICATION OF EQ/AMMO & EXPLOSIVES	36	41	1,005	399
K014	MODIFICATION OF EQ/GUIDED MISSILES	64,735	59,324	64,705	118,299
K015	MODIFICATION OF EQ/AIRCRAFT	343,477	318,324	366,417	760,335
K016	MODIFICATION OF EQ/AIRCRAFT COMPONENTS	49,193	23,603	66,346	33,726
K017	MODIFICATION OF EQ/AIRCRAFT GROUND EQUIP	1,264	1,988	162	773
K018	MODIFICATION OF EQ/SPACE VEHICLES	0	-440	0	0
K019	MODIFICATION OF EQ/SHIPS-SML CRAFT-DOCKS	114,662	205,782	334,271	424,736
K020	MODIFICATION OF EQ/MARINE EQUIP	1,225	924	1,112	2,356
K022	MODIFICATION OF EQ/RAILWAY EQUIP	-12	439	458	41
K023	MODIFICATION OF EQ/VEHICLES-TRAILERS-CYC	72,765	26,251	9,536	2,409
K024	MODIFICATION OF EQ/TRACTORS	0	31	0	0
K025	MODIFICATION OF EQ/VEHICULAR EQUIP	0	614	1,570	-674
K026	MODIFICATION OF EQ/TIRES & TUBES	184	0	0	98
K028	MODIFICATION OF EQ/ENGINES & TURBINES	24,394	63,275	110,532	129,005
K029	MODIFICATION OF EQ/ENGINE ACCESSORIES	2,048	0	841	148
K030	MODIFICATION OF EQ/MECH POWER TRANS EQ	351	595	105	0
K031	MODIFICATION OF EQ/BEARINGS	0	0	0	0
K034	MODIFICATION OF EQ/METALWORK MACHINERY	1,975	-471	0	183
K035	MODIFICATION OF EQ/SERVICE & TRADE EQUIP	31	0	95	0
K036	MODIFICATION OF EQ/INDUSTRIAL MACHINERY	273	125	0	110
K038	MODIFICATION OF EQ/CONSTRUCTION EQUIP	7,011	4,985	4,950	5,221
K039	MODIFICATION OF EQ/MATERIALS HANDLING EQ	323	217	258	136
K041	MODIFICATION OF EQ/REFRIGERATION - AC EQ	71	662	290	1,799
K042	MODIFICATION OF EQ/FIRE-RESCUE-SAFETY EQ	6,904	7,750	407	3,854
K043	MODIFICATION OF EQ/PUMPS & COMPRESSORS	134	103	0	123
K044	MODIFICATION OF EQ/FURNACE-NUCLEAR REAC	37	461	202	0
K045	MODIFICATION OF EQ/PLUMBING-HEATING EQ	-25	230	0	0
K046	MODIFICATION OF EQ/WATER PURIFICATION EQ	90	0	0	0
K047	MODIFICATION OF EQ/PIPE-TUBING-HOSE	NA	NA	NA	98
K048	MODIFICATION OF EQ/VALVES	127	16	0	0
K049	MODIFICATION OF EQ/MAINTENANCE SHOP EQ	140	-162	46	57
K052	MODIFICATION OF EQ/MEASURING TOOLS	0	0	0	0
K053	MODIFICATION OF EQ/HARDWARE & ABRASIVES	0	0	30	0
K054	MODIFICATION OF EQ/PREFAB STRUCTURES	171	112	0	0
K055	MODIFICATION OF EQ/LUMBER & MILLWORK	NA	NA	NA	37
K056	MODIFICATION OF EQ/CONSTRUCTION MATERIAL	22	173	122	405
K058	MODIFICATION OF EQ/ELECTRICAL-ELECT EQUIP	66,166	112,225	96,256	137,501
K059	MODIFICATION OF EQ/ELECTRICAL-ELECT EQUIP	45,632	45,904	55,105	73,152
K061	MODIFICATION OF EQ/POWER DISTRIBUTION EQ	567	3,702	205	235
K063	MODIFICATION OF EQ/ALARM & SIGNAL SYSTEM	24	16	0	0
K065	MODIFICATION OF EQ/MEDICAL & DENTAL EQ	111	0	0	0
K066	MODIFICATION OF EQ/INSTRUMENTS & LAB EQ	3,731	6,984	2,178	1,639
K067	MODIFICATION OF EQ/PHOTOGRAPHIC EQUIP	92	84	33	164
K068	MODIFICATION OF EQ/CHEMICAL PRODUCTS	-21	0	0	0
K069	MODIFICATION OF EQ/TRAINING AIDS-DEVICES	3,732	6,002	21,402	41,177
K070	MODIFICATION OF EQ/ADP EQUIP & SUPPLIES	17,617	20,634	21,686	41,274
K071	MODIFICATION OF EQ/FURNITURE	0	0	0	0
K072	MODIFICATION OF EQ/HOUSEHOLD FURNISHINGS	10	0	0	0

**Table B. Other Services and Construction
(Continued)
(Amounts in Thousands)**

SERVICE CODE	DESCRIPTION	FISCAL YEAR			
		1981	1982	1983	1984
K	MODIFICATION OF EQUIPMENT				
K073	MODIFICATION OF EQ/FOOD PREP-SERVING EQ	14	0	0	0
K074	MODIFICATION OF EQ/OFFICE MACHINES	143	33	97	239
K077	MODIFICATION OF EQ/MUSICAL INST-RADIO-TV	NA	18	0	0
K078	MODIFICATION OF EQ/RECREATIONAL EQUIP	NA	18	0	0
K084	MODIFICATION OF EQ/CLOTHING - INDIVID EQ	90	111	108	878
K091	MODIFICATION OF EQ/FUELS-LUBRICANTS-OILS	0	0	0	0
K093	MODIFICATION OF EQ/NONMETALIC FAB MAT	0	0	0	0
K095	MODIFICATION OF EQ/METAL BARS & SHEETS	72	81	130	55
K099	MODIFICATION OF MISC EQUIPMENT	1,845	1,787	2,250	32,594
		-----	-----	-----	-----
K	TOTAL MODIFICATION OF EQUIPMENT	685,846	948,425	1,198,343	1,839,791
		*****	*****	*****	*****
L	TECHNICAL REPRESENTATIVE SERVICES				
L010	TECH REP SERVICES /WEAPONS	9,357	12,388	9,398	10,207
L011	TECH REP SERVICES /NUCLEAR ORDNANCE	0	0	76	0
L012	TECH REP SERVICES /FIRE CONTROL EQUIP	2,012	6,069	6,641	4,451
L013	TECH REP SERVICES /AMMO & EXPLOSIVES	4,210	1,864	2,779	235
L014	TECH REP SERVICES /GUIDED MISSILES	153,847	126,472	145,295	102,637
L015	TECH REP SERVICES /AIRCRAFT	78,819	91,204	106,081	91,890
L016	TECH REP SERVICES /AIRCRAFT COMPONENTS	35,136	44,981	55,889	79,674
L017	TECH REP SERVICES /AIRCRAFT GROUND EQUIP	1,382	1,786	1,595	507
L018	TECH REP SERVICES /SPACE VEHICLES	89,015	120,437	86,806	131,274
L019	TECH REP SERVICES /SHIPS-SML CRAFT-DOCKS	67,834	29,151	75,142	46,349
L020	TECH REP SERVICES /MARINE EQUIP	3,282	3,242	6,713	16,072
L022	TECH REP SERVICES /RAILWAY EQUIP	100	0	0	157
L023	TECH REP SERVICES /VEHICLES-TRAILERS-CYC	0	408	2,673	988
L025	TECH REP SERVICES /VEHICULAR EQUIP	0	0	0	0
L028	TECH REP SERVICES /ENGINES & TURBINES	11,193	15,388	16,308	15,682
L029	TECH REP SERVICES /ENGINE ACCESSORIES	1,204	1,907	2,166	717
L030	TECH REP SERVICES /MECH POWER TRANS EQ	243	0	282	229
L031	TECH REP SERVICES /BEARINGS	15	0	0	0
L032	TECH REP SERVICES /WOODWORKING MACHINERY	0	0	0	0
L034	TECH REP SERVICES /METALWORK MACHINERY	0	109	210	0
L035	TECH REP SERVICES /SERVICE & TRADE EQUIP	91	-42	0	0
L036	TECH REP SERVICES /INDUSTRIAL MACHINERY	53	49	40	43
L038	TECH REP SERVICES /CONSTRUCTION EQUIP	0	0	0	0
L041	TECH REP SERVICES /REFRIGERATION - AC EQ	115	97	0	0
L042	TECH REP SERVICES /FIRE-RESCUE-SAFETY EQ	48	21	0	46
L043	TECH REP SERVICES /PUMPS & COMPRESSORS	347	155	77	49
L044	TECH REP SERVICES /FURNACE-NUCLEAR REAC	11	57	0	29
L046	TECH REP SERVICES /PLUMBING-HEATING EQ	-71	16	45	0
L048	TECH REP SERVICES /WATER PURIFICATION EQ	NA	NA	NA	30
L047	TECH REP SERVICES /PIPE-TUBING-HOSE	1,898	0	34	0
L048	TECH REP SERVICES /VALVES	0	0	40	0
L049	TECH REP SERVICES /MAINTENANCE SHOP EQ	2,294	300	1,212	166
L052	TECH REP SERVICES /MEASURING TOOLS	NA	161	5,695	3,284
L053	TECH REP SERVICES /HARDWARE & ABRASIVES	0	0	0	0
L054	TECH REP SERVICES /PREFAB STRUCTURES	-22	20	583	85
L055	TECH REP SERVICES /LUMBER & MILLWORK	32	0	0	70
L056	TECH REP SERVICES /CONSTRUCTION MATERIAL	NA	NA	186	33
L056	TECH REP SERVICES /COMMUNICATION EQUIP	26,842	35,189	37,113	45,789
L059	TECH REP SERVICES /ELECTRICAL-ELCT EQUIP	33,389	29,220	31,984	79,186
L061	TECH REP SERVICES /POWER DISTRIBUTION EQ	0	30	188	200
L063	TECH REP SERVICES /ALARM & SIGNAL SYSTEM	NA	45	0	499
L065	TECH REP SERVICES /MEDICAL & DENTAL EQ	0	12	0	0
L066	TECH REP SERVICES /INSTRUMENTS & LAB EQ	1,350	686	382	947
L067	TECH REP SERVICES /PHOTOGRAPHIC EQUIP	181	5	48	0
L068	TECH REP SERVICES /CHEMICAL PRODUCTS	0	0	0	289
L069	TECH REP SERVICES /TRAINING AIDS-DEVICES	1,370	3,685	3,507	5,021
L070	TECH REP SERVICES /ADP EQUIP & SUPPLIES	9,644	12,355	16,296	10,678
L071	TECH REP SERVICES /FURNITURE	0	0	0	0
L072	TECH REP SERVICES /HOUSEHOLD FURNISHINGS	0	0	43	0
L074	TECH REP SERVICES /OFFICE MACHINES	69	68	0	0
L075	TECH REP SERVICES /OFFICE SUPPLIES	52	0	0	0
L076	TECH REP SERVICES /BOOKS-MAPS-PUBS	84	-51	318	184
L078	TECH REP SERVICES /RECREATIONAL EQUIP	NA	NA	161	0
L079	TECH REP SERVICES /CLEANING EQUIP	40	0	44	0
L080	TECH REP SERVICES /BRUSHES-PAINTS-SEALER	1,487	0	0	0
L088	TECH REP SERVICES /LIVE ANIMALS	0	0	0	0
L089	TECH REP SERVICES /SUBSISTENCE	NA	NA	83	0
L095	TECH REP SERVICES /METAL BARS & SHEETS	NA	NA	88	0
L096	TECH REP SERVICES /ORES & MINERALS	0	0	0	0
L099	MISC TECHNICAL REPRESENTATIVE SERVICES	27,374	18,946	39,160	53,123
		-----	-----	-----	-----
L	TOTAL TECHNICAL REPRESENTATIVE SERVICES	584,285	556,286	639,056	700,630
		*****	*****	*****	*****

**Table B. Other Services and Construction
(Continued)
(Amounts in Thousands)**

SERVICE CODE	DESCRIPTION	FISCAL YEAR			
		1981	1982	1983	1984
M	OPERATION OF GOVERNMENT OWNED FACILITY				
M111	OPER OF GOVT FAC /OFFICE BUILDINGS	0	0	0	13,279
M119	OPER OF GOVT FAC /OTHER ADMIN-SVC BLDGS	373,122	377,247	384,577	408,083
M11	TOTAL OPER OF GOVT FAC/ADMIN & SVC BUILDINGS	373,122	377,247	384,577	422,342
M121	OPER OF GOVT FAC /AIR TRAFFIC TOWERS	NA	354	1,257	1,471
M122	OPER OF GOVT FAC /AIR TRAFFIC TNG FAC	588	319	34	530
M123	OPER OF GOVT FAC /RADAR & NAV FACILITY	79,041	80,297	98,620	147,484
M124	OPER OF GOVT FAC /AIRPORT RUNWAYS	0	2,646	4,124	2,897
M125	OPER OF GOVT FAC /AIRPORT TERMINALS	1,915	4,331	2,828	8,038
M126	OPER OF GOVT FAC /MISSILE SYSTEMS FAC	15,557	15,172	66,916	14,373
M127	OPER OF GOVT FAC /ELCT & COMM FAC	NA	288,958	351,482	323,748
M128		275,628	82,221	0	0
M129	OPER OF GOVT FAC /OTHER AIRFIELD STRUCT	3,442	1,978	5,308	24,388
M12	TOTAL OPER OF GOVT FAC/AIRFIELD, COMM & MISSILE FAC	378,167	434,471	648,684	620,907
M131	OPER OF GOVT FAC /SCHOOLS	34	51	0	0
M139	OPER OF GOVT FAC /EDUCATIONAL BLDGS	214	121	495	514
M13	TOTAL OPER OF GOVT FAC/EDUCATIONAL BUILDINGS	248	172	495	514
M142	OPER OF GOVT FAC /LABS & CLINICS	0	247	0	0
M14	TOTAL OPER OF GOVT FAC/HOSPITAL BUILDINGS	0	247	0	0
M151	OPER OF GOVT FAC /AMMUNITION FACILITIES	788,151	914,888	936,740	1,278,614
M152	OPER OF GOVT FAC /MAINTENANCE BLDGS	110,628	100,087	114,784	182,582
M153	OPER OF GOVT FAC /PRODUCTION BLDGS	87,101	100,508	147,500	91,562
M154	OPER OF GOVT FAC /SHIP CONST-REPAIR FAC	38,195	7,007	134,846	41,750
M155	OPER OF GOVT FAC TANK-AUTOMOTIVE FAC	14,199	31,021	87,788	14,385
M159	OPER OF GOVT FAC /OTHER INDUSTRIAL BLDG	8,602	11,285	8,895	9,896
M15	TOTAL OPER OF GOVT FAC INDUSTRIAL BUILDINGS	1,046,874	1,164,774	1,430,531	1,585,969
M161	OPER OF GOVT FAC /FAMILY HOUSING	1,358	1,858	1,850	2,415
M163	OPER OF GOVT FAC /TROOP HOUSING	NA	NA	105	0
M164	OPER OF GOVT FAC/DINING FACILITIES	1,182	1,419	2,512	1,782
M16	TOTAL OPER OF GOVT FAC/RESIDENTIAL BUILDINGS	2,538	3,275	4,468	4,177
M171	OPER OF GOVT FAC /AMMO STORAGE BLDGS	0	3,514	3,085	2,774
M172	OPER OF GOVT FAC /FOOD STORAGE BLDGS	NA	NA	552	0
M173	OPER OF GOVT FAC /FUEL STORAGE BLDGS	19,507	17,185	23,985	85,288
M174	OPER OF GOVT FAC /OPEN STORAGE FAC	NA	NA	NA	80
M179	OPER OF GOVT FAC /OTHER WAREHOUSE BLDGS	9,985	23,705	22,870	19,444
M17	TOTAL OPER OF GOVT FAC/WAREHOUSE BUILDINGS	29,472	44,404	50,372	107,584
M181	OPER OF GOVT FAC /R&D GOGO FACILITIES	70,798	128,808	148,587	170,448
M182	OPER OF GOVT FAC /R&D GOGO FACILITIES	53,770	58,787	31,428	35,990
M18	TOTAL OPER OF GOVT FAC R & D FACILITIES	124,568	188,383	180,012	206,438
M192	OPER OF GOVT FAC /TESTING BUILDINGS	13,267	12,301	11,379	48,643
M199	OPER OF GOVT FAC /MISCELLANEOUS BLDGS	209,634	182,141	149,054	183,830
M19	TOTAL OPER OF GOVT FAC OTHER BUILDINGS	222,901	194,442	160,433	232,473
M1	TOTAL OPER OF GOVT FAC BUILDING STRUCTURES	2,175,890	2,407,395	2,758,482	3,080,381
M211	OPER OF GOVT FAC /DAMS	NA	NA	NA	134
M219	OPER OF GOVT FAC /OTHER CONSV STRUCTURE	0	0	1,187	3,534
M21	TOTAL OPER OF GOVT FAC/CONSERVATION & DEVELOPMENT	0	0	1,187	3,668

**Table B. Other Services and Construction
(Continued)
(Amounts in Thousands)**

SERVICE CODE	DESCRIPTION	FISCAL YEAR			
		1981	1982	1983	1984
M221	OPER OF GOVT FAC /AIRPORT SERVICE ROADS	0	0	0	0
M222	OPER OF GOVT FAC /HWYS-ROADS-BRIDGES	0	0	0	401
M22	TOTAL OPER OF GOVT FAC/HIGHWAYS ROADS STREETS & BRIDGES	0	0	0	401
M239	OPER OF GOVT FAC /EPG - OTHER	0	0	0	0
M23	TOTAL OPER OF GOVT FAC/ELECTRIC POWER GENERATION (EPG)	0	0	0	0
M241	OPER OF GOVT FAC /FUEL SUPPLY	0	0	195	269
M242	OPER OF GOVT FAC /HEATING & COOL PLANTS	623	2,209	1,980	2,141
M244	OPER OF GOVT FAC /SEWERAGE & WASTE	27	24	0	100
M245	OPER OF GOVT FAC /WATER SUPPLY	105	1,821	0	0
M249	OPER OF GOVT FAC /OTHER UTILITIES	943	186	191	2,212
M24	TOTAL OPER OF GOVT FAC/UTILITIES	1,698	4,320	2,346	4,722
M299	OPER OF GOVT FAC /ALL OTHER NON-BLDG STRUCTS	32,957	54,835	34,823	35,158
M29	TOTAL OPER OF GOVT FAC/OTHER NON-BUILDING STRUCTURES	32,957	54,835	34,823	35,158
M2	TOTAL OPER OF GOVT FAC/NON-BUILDING STRUCTURES	34,655	56,655	38,126	43,949
M	TOTAL OPERATION OF GOVERNMENT OWNED FACILITY	2,210,745	2,466,250	2,797,578	3,124,330
N	INSTALLATION OF EQUIPMENT				
N010	INSTALLATION OF EQ/WEAPONS	297	2,837	8,662	3,702
N012	INSTALLATION OF EQ/FIRE CONTROL EQUIP	117	817	9,626	1,004
N013	INSTALLATION OF EQ/AMMO & EXPLOSIVES	151	15,751	749	42
N014	INSTALLATION OF EQ/GUIDED MISSILES	13,620	6,483	85,295	95,087
N015	INSTALLATION OF EQ/AIRCRAFT	273	0	403	283
N016	INSTALLATION OF EQ/AIRCRAFT COMPONENTS	264	1,940	1,021	277
N017	INSTALLATION OF EQ/AIRCRAFT GROUND EQUIP	514	1,012	1,702	31
N018	INSTALLATION OF EQ/SPACE VEHICLES	63,623	63,284	22,555	27,218
N019	INSTALLATION OF EQ/SHIPS-SML CRAFT-DOCKS	17,590	14,406	3,706	49,946
N020	INSTALLATION OF EQ/MARINE EQUIP	1,630	1,309	500	1,217
N022	INSTALLATION OF EQ/RAILWAY EQUIP	0	0	84	0
N023	INSTALLATION OF EQ/VEHICLES-TRAILERS-CYC	50	88	37	0
N026	INSTALLATION OF EQ/TIRES & TUBES	2,547	0	0	0
N028	INSTALLATION OF EQ/ENGINES & TURBINES	145	109	91	0
N029	INSTALLATION OF EQ/ENGINE ACCESSORIES	0	0	0	0
N030	INSTALLATION OF EQ/MECH POWER TRANS EQ	0	0	0	92
N031	INSTALLATION OF EQ/BEARINGS	0	0	0	0
N032	INSTALLATION OF EQ/WOODWORKING MACHINERY	0	0	0	0
N034	INSTALLATION OF EQ/METALWORK MACHINERY	19,764	1,497	11,660	1,428
N035	INSTALLATION OF EQ/SERVICE & TRADE EQUIP	282	102	0	-277
N036	INSTALLATION OF EQ/INDUSTRIAL MACHINERY	3,054	1,504	1,397	0
N038	INSTALLATION OF EQ/CONSTRUCTION EQUIP	447	0	0	0
N039	INSTALLATION OF EQ/MATERIALS HANDLING EQ	14	127	189	502
N040	INSTALLATION OF EQ/ROPE-CABLE-CHAIN	0	0	81	113
N041	INSTALLATION OF EQ/REFRIGERATION - AC EQ	1,182	946	1,899	228
N042	INSTALLATION OF EQ/FIRE-RESCUE-SAFETY EQ	602	119	688	565
N043	INSTALLATION OF EQ/PUMPS & COMPRESSORS	1,076	248	488	398
N044	INSTALLATION OF EQ/FURNACE-NUCLEAR REAC	1,400	174	2,285	92
N045	INSTALLATION OF EQ/PLUMBING-HEATING EQ	495	797	606	263
N046	INSTALLATION OF EQ/WATER PURIFICATION EQ	4,865	3,234	118	0
N047	INSTALLATION OF EQ/PIPE-TUBING-HOSE	35	0	0	0
N048	INSTALLATION OF EQ/VALVES	NA	38	0	0
N049	INSTALLATION OF EQ/MAINTENANCE SHOP EQ	2,426	2,653	46	40
N053	INSTALLATION OF EQ/HARDWARE & ABRASIVES	NA	47	0	0
N054	INSTALLATION OF EQ/PREFAB STRUCTURES	2,635	277	149	0
N056	INSTALLATION OF EQ/CONSTRUCTION MATERIAL	16	56	489	84
N058	INSTALLATION OF EQ/COMMUNICATION EQUIP	66,397	70,457	66,346	76,001
N059	INSTALLATION OF EQ/ELECTRICAL-ELCT EQUIP	7,935	12,189	16,074	3,075
N061	INSTALLATION OF EQ/POWER DISTRIBUTION EQ	2,126	1,752	504	571
N062	INSTALLATION OF EQ/LIGHTING FIXTURES	178	108	193	0
N06J	INSTALLATION OF EQ/ALARM & SIGNAL SYSTEM	928	792	1,711	366
N065	INSTALLATION OF EQ/MEDICAL & DENTAL EQ	28	243	-58	80
N066	INSTALLATION OF EQ/INSTRUMENTS & LAB EQ	29	379	156	0
N067	INSTALLATION OF EQ/PHOTOGRAPHIC EQUIP	11	139	0	0

**Table B. Other Services and Construction
(Continued)
(Amounts in Thousands)**

SERVICE CODE	DESCRIPTION	FISCAL YEAR			
		1981	1982	1983	1984
N	INSTALLATION OF EQUIPMENT				
N066	INSTALLATION OF EQ/CHEMICAL PRODUCTS	NA	NA	NA	1,957
N069	INSTALLATION OF EQ/TRAINING AIDS-DEVICES	1,392	2,077	1,576	1,662
N070	INSTALLATION OF EQ/ADP EQUIP & SUPPLIES	2,078	1,601	3,685	3,805
N071	INSTALLATION OF EQ/FURNITURE	339	249	156	30
N072	INSTALLATION OF EQ/HOUSEHOLD FURNISHINGS	318	689	188	243
N073	INSTALLATION OF EQ/FOOD PREP-SERVING EQ	33	18	0	0
N074	INSTALLATION OF EQ/OFFICE MACHINES	178	147	0	377
N075	INSTALLATION OF EQ/OFFICE SUPPLIES	0	0	0	0
N076	INSTALLATION OF EQ/BOOKS-MAPS-PUBS	NA	NA	84	0
N077	INSTALLATION OF EQ/MUSICAL INST-RADIO-TV	0	17	0	0
N078	INSTALLATION OF EQ/RECREATIONAL EQUIP	0	73	42	-
N079	INSTALLATION OF EQ/CLEANING EQUIP	0	0	0	0
N099	INSTALLION OF MISC EQUIPMENT	5,279	9,879	17,888	42,787
N	TOTAL INSTALLATION OF EQUIPMENT	246,358	220,284	263,373	313,279
P	SALVAGE SERVICE				
P100	DISPOSAL OF EXCESS AND SURPLUS PROPERTY	978	1,445	14,807	14,718
P200	SALVAGE OF AIRCRAFT	67	28	85	782
P300	SALVAGE OF MARINE VESSELS	3,387	2,003	-238	837
P400	DEMOLITION OF BUILDINGS	2,502	1,723	1,288	2,422
P500	DEMOLITION OF STRUCTURES OR FACILITIES (OTHER THAN	856	477	640	3,837
P999	OTHER SALVAGE SERVICES	7,596	12,372	14,103	22,664
P	TOTAL SALVAGE SERVICE	18,366	18,048	30,888	48,237
Q	MEDICAL SERVICE				
Q101	DEPENDENT MEDICARE SERVICES	39,046	40,311	47,241	1,445
Q201	GENERAL HEALTH CARE SERVICES	11,370	228,091	48,877	30,059
Q301	LABORATORY TESTING SERVICES	405	1,362	2,604	1,783
Q401	NURSING SERVICES	0	0	0	120
Q501	ANESTHESIOLOGY SERVICES	26	0	0	0
Q502	CARDIO VASCULAR SERVICES	129	0	82	50
Q503	DENTISTRY SERVICES	0	0	0	0
Q504	DERMATOLOGY SERVICES	26	0	0	0
Q507	GYNECOLOGY SERVICES	705	641	1,565	1,137
Q508	HEMATOLOGY SERVICES	12	13	36	0
Q509	INTERNAL MEDICINE SERVICES	46	0	0	0
Q510	NEUROLOGY SERVICES	18	23	0	120
Q511	OPHTHALMOLOGY SERVICES	0	13	0	0
Q512	OPTOMETRY SERVICES	10	45	0	0
Q513	ORTHOPEDIC SERVICES	472	494	436	691
Q514	OTOLARYNGOLOGY SERVICES	0	15	0	0
Q515	PATHOLOGY SERVICES	101	244	279	38
Q516	PEDIATRIC SERVICES	0	28	0	0
Q518	PHYSICAL MEDICINE & REHABILITATION SERVICES	0	0	0	105
Q519	PSYCHIATRY SERVICES	139	217	146	338
Q521	PULMONARY SERVICES	0	-22	0	0
Q522	RADIOLOGY SERVICES	4,102	3,180	2,887	3,669
Q523	SURGERY SERVICES	710	608	387	228
Q524	THORACIC SERVICES	NA	14	0	0
Q525	UROLOGY SERVICES	0	133	0	37
Q526	MEDICAL/PSYCHIATRIC CONSULTATION SVCS	NA	NA	NA	37
Q5	TOTAL SPECIALIZED MEDICAL SERVICE	6,498	8,644	8,810	8,650
Q999	OTHER MEDICAL SERVICES	1,410	8,949	2,041	1,983
Q	TOTAL MEDICAL SERVICE	58,727	282,357	108,373	42,020
R	PROFESSIONAL, TECHNICAL & MANAGEMENT SERVICES				
R111	A/E CONSTRUCTION /ADMIN & SVC BLDGS	22,921	10,368	16,807	22,375
R112	A/E CONSTRUCTION /AIRFIELD & MSL FAC	16,512	20,166	26,795	26,477
R113	A/E CONSTRUCTION /EDUCATIONAL BLDGS	3,919	14,264	11,943	26,249
R114	A/E CONSTRUCTION /HOSPITAL BUILDINGS	18,908	25,024	34,164	19,674
R115	A/E CONSTRUCTION /INDUSTRIAL BLDGS	8,455	3,736	12,565	11,680
R116	A/E CONSTRUCTION /RESIDENTIAL BLDGS	10,601	17,485	21,290	36,451

**Table B. Other Services and Construction
(Continued)
(Amounts in Thousands)**

SERVICE CODE	DESCRIPTION	FISCAL YEAR			
		1981	1982	1983	1984
R	PROFESSIONAL, TECHNICAL & MANAGEMENT SERVICES				
R117	A/E CONSTRUCTION /WAREHOUSE BLDGS	12,309	3,333	3,268	10,137
R118	A/E CONSTRUCTION /R&D FACILITIES	5,041	3,870	3,272	6,019
R119	A/E CONSTRUCTION /OTHER BUILDINGS	48,794	80,041	93,513	121,926
R11	TOTAL A/E CONSTRUCTION /BUILDING & FACILITY STRUCTURES	145,460	177,985	223,617	281,168
R121	A/E CONSTRUCTION /CONSERVATION & DEV	2,933	3,890	6,806	4,009
R122	A/E CONSTRUCTION /HWYS-ROADS-BRIDGES	8,445	4,214	4,817	4,011
R123	A/E CONSTRUCTION /ELECTRIC POWER GENR	7,668	9,434	6,854	5,166
R124	A/E CONSTRUCTION /UTILITIES	11,828	14,882	13,560	13,521
R129	A/E CONSTRUCTION /OTHER NON-BLDG STRUCT	25,688	39,324	40,563	28,307
R12	TOTAL A/E CONSTRUCTION /NON-BUILDING STRUCTURES	64,588	71,324	72,200	65,014
R1	TOTAL A/E CONSTRUCTION	200,028	249,309	295,817	336,202
R211	ARCHITECT-ENGINEER SERVICES (NON-CONSTRUCTION)	161,920	198,367	211,928	231,003
R212	DRAFTING ENGINEERING SERVICES	8,633	62,778	50,094	78,572
R213	INSPECTION SERVICES (NON-CONSTRUCTION)	14,988	11,409	13,502	8,024
R214	MANAGEMENT ENGINEERING SERVICES	127,463	140,011	98,020	138,808
R215	PRODUCTION ENGINEERING SERVICES	199,829	260,221	351,832	515,036
R216	MARINE ARCHITECT & ENGINEERING SERVICES	125,088	148,584	217,557	318,225
R219	OTHER ARCHITECT & ENGINEERING TYPE SERVICES	180,948	295,831	249,795	249,683
R2	TOTAL ARCHITECTS/ENGINEERS - GENERAL	818,880	1,115,001	1,193,628	1,537,131
R301	ADP FACILITY MANAGEMENT SERVICES	29,160	10,848	13,459	24,890
R302	ADP SYSTEMS DEVELOPMENT & PROGRAMMING SERVICES	75,721	111,240	173,012	280,233
R303	ADP ENTRY SERVICES	1,928	5,178	5,504	7,801
R304	ADP TRANSMISSION SERVICES	1,414	2,408	2,014	759
R305	ADP TELEPROCESSING SERVICES	NA	NA	37,307	58,246
R307	AUTOMATED INFORMATION SYSTEM SERVICES	NA	NA	NA	2,215
R399	OTHER ADP SERVICES	181,670	280,807	342,707	442,303
R3	TOTAL AUTOMATIC DATA PROCESSING SERVICES	289,893	410,274	574,003	816,247
R401	ADVERTISING SERVICES	113,150	118,847	114,801	86,810
R402	DATA COLLECTION SERVICES	20,520	31,336	41,965	44,140
R403	FINANCIAL AUDITING SERVICES	11,615	7,368	27,204	35,270
R404	LAND SURVEYS, CADASTRAL SERVICES (NON-CONSTRUCTION)	18,412	13,136	10,782	14,249
R405	OPERATIONS RESEARCH SERVICES	4,996	5,532	5,974	4,783
R406	POLICY REVIEW DEVELOPMENT SERVICES	8,497	7,566	4,264	9,850
R407	PROGRAM EVALUATION SERVICES	28,103	37,885	46,268	35,789
R408	PROGRAM MANAGEMENT SUPPORT SERVICES	319,772	948,498	455,784	409,323
R409	PROGRAM REVIEW DEVELOPMENT SERVICES	20,843	29,438	46,016	56,823
R410	PUBLIC RELATION SERVICES	-39	63	205	217
R411	REAL PROPERTY APPRAISAL SERVICES	879	1,063	257	967
R412	SIMULATION	13,117	18,154	18,901	17,418
R413	SPECIFICATION DEVELOPMENT SERVICES	90,683	58,209	91,559	90,166
R414	SYSTEMS ENGINEERING SERVICES	510,373	614,510	835,118	1,029,154
R415	TECHNOLOGY SHARING/UTILIZATION SERVICES	33,222	78,961	81,930	101,315
R416	CARE OF ANIMALS	NA	NA	NA	49
R417	LOGISTICS SUPPORT SERVICES	83,142	312,840	413,491	138,311
R418	LEGAL SERVICES	NA	NA	NA	1,227
R419	EDUCATIONAL SERVICES	NA	NA	NA	9,933
R421	TECHNICAL ASSISTANCE	NA	NA	NA	6,714
R423	INTELLIGENCE SERVICES	NA	NA	NA	560
R424	EXPERT WITNESS	NA	NA	NA	39
R425	ENGINEERING TECHNICAL SERVICES	NA	NA	NA	93,478
R426	COMMUNICATIONS SERVICES	NA	NA	NA	3,530
R497	PERSONAL SERVICES	NA	NA	5,650	4,784
R498	OTHER PROFESSIONAL SERVICES	NA	8,708	51,052	160,423
R499	OTHER MANAGEMENT SERVICES	280,578	313,011	188,412	69,609
R4	TOTAL MANAGEMENT & PROFESSIONAL SERVICES	1,555,843	2,598,703	2,439,603	2,425,911

**Table B. Other Services and Construction
(Continued)
(Amounts in Thousands)**

SERVICE CODE	DESCRIPTION	FISCAL YEAR			
		1981	1982	1983	1984
R501		42,502	76,842	78,715	0
R502	AIR QUALITY ANALYSES	875	1,155	581	154
R503	ARCHAEOLOGICAL/PALEONTOLOGICAL STUDIES	3,527	4,645	3,057	4,025
R504	CHEMICAL/BIOLOGICAL STUDIES & ANALYSES	3,647	5,252	9,322	3,823
R505	COST BENEFIT ANALYSES	934	1,346	729	811
R506	DATA ANALYSES (OTHER THAN SCIENTIFIC)	15,325	17,203	14,510	27,535
R507	ECONOMIC/SOCIO-ECONOMIC & LABOR STUDIES	1,710	500	2,352	1,813
R508	STUDIES/ENDANGERED SPECIES - ANIMAL	113	155	135	35
R509	ENDANGERED SPECIAL STUDIES PLANT & ANIMAL	38	0	114	159
R510	ENVIRONMENTAL ASSESSMENTS	6,581	9,327	8,477	9,483
R511	ENVIRONMENTAL BASELINE STUDIES	555	455	555	597
R512	ENVIRONMENTAL IMPACT STUDIES	2,125	1,731	2,512	2,929
R513	FEASIBILITY STUDIES (NON-CONSTRUCTION)	9,435	7,575	9,457	4,545
R514		0	0	0	0
R515		3,051	534	1,151	0
R516	ANIMAL & FISHERIES STUDIES	2,352	1,407	534	9,597
R517	GEOLOGICAL STUDIES	755	525	553	575
R518	GEOPHYSICAL STUDIES	971	254	249	325
R519	GEO TECHNICAL STUDIES	2,054	5,511	1,207	2,550
R520	GRAZING RANGE/STUDIES	NA	NA	NA	200
R521	HISTORICAL STUDIES	755	2,007	1,255	173
R522	LEGAL/LITIGATION STUDIES	235	259	255	5,105
R524	MATHEMATICAL/STATISTICAL ANALYSES	550	1,020	2,545	2,291
R525	NATURAL RESOURCE STUDIES	251	225	172	105
R526	OCEANOLOGICAL STUDIES	1,924	504	955	555
R527	RECREATION STUDIES	95	492	529	52
R528	REGULATORY STUDIES	305	32	0	55
R529	SCIENTIFIC DATA STUDIES	14,212	15,245	15,552	15,752
R530	SEISMOLOGICAL STUDIES	4,155	2,525	2,755	1,101
R531		452	55	520	0
R532	SOIL STUDIES	2,729	215	125	933
R533	STUDIES/WATER QUALITY	2,515	1,915	4,000	1,575
R534	STUDIES/WILDLIFE	590	500	127	155
R537	MEDICAL & HEALTH STUDIES	-242	-25	1,333	1,355
R538	INTELLIGENCE STUDIES	NA	3,020	32,755	33,119
R539	AERONAUTIC/SPACE STUDIES	NA	NA	NA	495
R541	DEFENSE STUDIES	NA	NA	NA	3,523
R542	EDUCATIONAL STUDIES & ANALYSES	NA	NA	NA	542
R543	ENERGY STUDIES	NA	NA	NA	1,221
R544	TECHNOLOGY STUDIES	NA	NA	NA	452
R546	SECURITY STUDIES (PHYSICAL & PERSONNEL)	NA	NA	NA	133
R547	ACCOUNTING/FINANCIAL MANAGEMENT STUDIES	NA	NA	NA	157
R549		NA	NA	NA	351
R550	ORGANIZATION/ADMINISTRATIVE/PERSONNEL STUDIES	NA	NA	NA	2,455
R551	MOBILIZATION/PREPAREDNESS STUDIES	NA	NA	NA	1,105
R552	MANPOWER STUDIES	NA	NA	NA	439
R553	COMMUNICATIONS STUDIES	NA	NA	NA	1,533
R554	ACQUISITION POLICY/PROCEDURES STUDIES	NA	NA	NA	159
R599	OTHER SPECIAL STUDIES AND ANALYSES	275,954	250,973	205,955	177,245
R5	TOTAL SPECIAL STUDIES & ANALYSES	401,379	415,123	403,010	325,475
R602	COURIER & MESSENGER SERVICES	NA	NA	NA	53
R604	MAILING & DISTRIBUTION SERVICES	NA	NA	NA	1,302
R605	LIBRARY SERVICES	NA	NA	NA	559
R606	COURT REPORTING SERVICES	NA	NA	NA	25
R607	WORD PROCESSING/TYPING SERVICE	NA	NA	NA	1,530
R608	TRANSLATION SERVICE (INCL SIGN LANGUAGE)	NA	NA	NA	25
R699	GOVERNMENT FACILITY OTHER THAN M601-M605	NA	NA	NA	4,293
R6	TOTAL	0	0	0	5,500
R701	ADVERTISING SERVICES	NA	NA	NA	27
R702	DATA COLLECTION SERVICES	NA	NA	NA	1,452
R703	FINANCIAL SERVICES	NA	NA	NA	32
R705	LOGISTIC SUPPORT SERVICES	NA	NA	NA	74,555
R707	CONTRACT, PROC & ACQUIS SUPPORT SERVICES	NA	NA	NA	27
R799	OTHER MANAGEMENT SUPPORT SERVICES	NA	NA	NA	13,732
R7	TOTAL	0	0	0	90,255
R	TOTAL PROFESSIONAL, TECHNICAL & MANAGEMENT SERVICES	3,255,023	4,755,410	4,905,051	5,539,735

**Table B. Other Services and Construction
(Continued)
(Amounts in Thousands)**

SERVICE CODE	DESCRIPTION	FISCAL YEAR			
		1981	1982	1983	1984
S	UTILITIES & HOUSEKEEPING SERVICES				
S111	UTILITIES/GAS	176,039	320,774	343,399	292,664
S112	UTILITIES/ELECTRICITY	725,198	1,269,315	1,281,692	753,403
S113	UTILITIES/TELEPHONE AND/OR COMMUNICATION	658,348	899,806	1,011,208	914,614
S114	UTILITIES/WATER	81,688	78,022	70,328	40,181
S119	OTHER UTILITIES	45,522	86,505	97,759	31,928
S1	TOTAL UTILITIES	1,686,793	2,656,422	2,804,386	2,032,770
S201	CUSTODIAL - JANITORIAL SERVICES	206,346	213,661	226,519	254,734
S202	FIRE PROTECTION SERVICES	3,473	2,479	9,616	4,725
S203	FOOD SERVICES	212,967	212,420	248,001	241,142
S204	FUELING & OTHER PETROLEUM SVCS - EXCL STORAGE	6,514	6,260	6,385	10,173
S205	GARBAGE COLLECTION SERVICES	51,348	53,432	54,070	60,265
S206	GUARD SERVICES	56,434	118,067	63,934	63,262
S207	INSECT & RODENT CONTROL SERVICES	1,021	1,382	1,703	2,365
S208	LANDSCAPING/GROUNDSKEEPING SERVICES	32,286	39,387	41,045	49,913
S209	LAUNDRY & DRY CLEANING SERVICES	24,759	26,227	30,242	31,689
S211	SURVEILLANCE SERVICES	3,195	1,887	1,835	1,027
S212	SOLID FUEL HANDLING SERVICES	3,797	2,882	752	3,010
S214	CARPET LAYING & CLEANING	NA	NA	NA	458
S215	WAREHOUSE & STORAGE SERVICES	NA	NA	NA	3,629
S216	BASE OPERATIONS SUPPORT SERVICES	NA	NA	NA	48,085
S299	OTHER HOUSEKEEPING SERVICES	93,802	95,348	96,616	107,156
S2	TOTAL HOUSEKEEPING SERVICES	695,942	775,230	780,718	861,653
S	TOTAL UTILITIES & HOUSEKEEPING SERVICES	2,382,735	3,431,652	3,585,104	2,914,423
T	PHOTOGRAPHIC, MAPPING, PRINTING & PUBLICATION SVC				
T001	ARTS-GRAPHICS	2,549	3,691	6,905	9,446
T002	CARTOGRAPHY	6,816	5,288	319	2,083
T003	CATALOGING	107	131	519	-4
T004	CHARTING	343	106	0	0
T005	FILM PROCESSING	2,770	3,906	2,507	10,486
T006	FILM-VIDEO TAPE PRODUCTION	2,302	2,828	7,898	11,325
T007	MICROFORM	4,307	3,667	9,314	6,928
T008	PHOTOGRAMMETRY	519	450	1,224	1,416
T009	PHOTOGRAPHIC - AERIAL	1,720	2,935	623	1,495
T010	PHOTOGRAPHIC - GENERAL	7,148	7,146	10,102	17,398
T011	PRINTING - BINDING	3,736	3,744	3,138	1,515
T012	REPRODUCTION	1,336	2,283	3,404	6,439
T013	TECHNICAL WRITING	47,518	41,556	34,121	38,481
T014	TOPOGRAPHY	-63	315	590	765
T015	GENERAL PHOTOGRAPHIC SERVICES - MOTION	NA	NA	61	116
T016	MAILING & ADDRESSING SERVICES	NA	NA	NA	1,993
T099	OTHER PHOTOGRAPHIC MAPPING PRINTING SVC	23,568	24,058	32,097	26,675
T	TOTAL PHOTOGRAPHIC, MAPPING, PRINTING & PUBLICATION SVC	106,652	102,104	113,022	136,557
U	TRAINING SERVICES				
U001	LECTURES FOR TRAINING	1,313	2,021	4,607	2,733
U002	PERSONNEL TESTING	1,075	1,364	3,509	2,022
U003	RESERVE TRAINING - MILITARY	435	269	149	203
U004	SCIENTIFIC AND MANAGEMENT EDUCATION	2,261	3,139	3,272	2,202
U005	TUITION FEES	72,662	94,942	96,009	111,498
U006	VOCATIONAL-TECHNICAL TRAINING	34,065	49,835	55,826	72,376
U007	FACULTY SALARIES FOR DEPENDENTS SCHOOLS	23,202	28,753	8,089	10,600
U009	OTHER TRAINING	527,623	171,424	239,902	151,418
U	TOTAL TRAINING SERVICES	662,656	351,747	413,363	383,052
V	TRANSPORTATION & TRAVEL				
V002	MOTOR POOL OPERATIONS	NA	NA	NA	7,276
V003	PACKING/CRATING SERVICES	NA	NA	NA	254
V0	TOTAL	0	0	0	7,530

Table B. Other Services and Construction
(Continued)
(Amounts in Thousands)

SERVICE CODE	DESCRIPTION	FISCAL YEAR			
		1981	1982	1983	1984
V111	AIR FREIGHT	138,164	140,042	130,008	20,282
V112	MOTOR FREIGHT	1,248	2,169	1,584	3,846
V113	RAIL FREIGHT	407	47	0	0
V114	STEVEDORING	60,838	71,330	66,317	93,799
V115	VESSEL FREIGHT	332,038	402,800	394,519	411,430
V119	OTHER CARGO FREIGHT SERVICES	86,830	44,096	88,486	65,811
V11	TOTAL CARGO & FREIGHT SERVICES	599,521	680,484	680,894	595,168
V121	AIR CHARTER FOR THINGS	10,418	8,437	9,459	152,863
V122	MOTOR CHARTER FOR THINGS	1,608	218	96	1,530
V124	VESSEL CHARTER FOR THINGS	235,552	596,135	2,349,429	543,751
V125	VESSEL TOWING	700	841	357	6,644
V129	OTHER VEHICLE CHARTER FOR THINGS	148	320	141	2,684
V12	TOTAL VEHICLE CHARTER	248,422	603,951	2,359,482	707,472
V1	TOTAL TRANSPORTATION OF THINGS	847,943	1,264,435	3,040,376	1,302,640
V211	AIR PASSENGER SERVICE	273,739	353,807	408,143	67,919
V212	MOTOR PASSENGER SERVICE	19,003	18,871	16,122	20,173
V213	RAIL PASSENGER SERVICE	NA	13	0	0
V214	VESSEL PASSENGER SERVICE	640	489	276	464
V21	TOTAL PASSENGER SERVICE	293,382	372,880	424,541	88,556
V221	PASSENGER AIR CHARTER SERVICE	1,340	1,848	108	438,599
V222	PASSENGER MOTOR CHARTER SERVICE	7,085	10,428	4,212	8,743
V223	PASSENGER RAIL CHARTER SERVICE	NA	NA	NA	524
V224	PASSENGER MARINE CHARTER SERVICE	130	536	683	224
V225	AMBULANCE SERVICE	80	0	54	38
V22	TOTAL VEHICLE CHARTER (WITH OPERATOR)	8,615	12,510	5,057	446,128
V230	LOGGING - HOTEL/MOTEL	0	0	0	0
V231	LOGGING - HOTEL/MOTEL	15,324	17,141	13,535	16,616
V240	MILITARY PERSONNEL RECRUITING	0	0	0	0
V241	MILITARY PERSONNEL RECRUITING	11,095	10,799	5,543	5,657
V251	CIVILIAN PERSONNEL RECRUITING	NA	NA	NA	666
V2	TOTAL TRAVEL OF PERSONS	328,416	413,430	448,676	557,623
V999	OTHER TRAVEL SERVICES	1,160	18,701	-9,819	2,442
V	TOTAL TRANSPORTATION & TRAVEL	1,177,519	1,698,566	3,479,433	1,870,235
W	LEASE OR RENTAL OF EQUIPMENT				
W010	LEASE-RENTAL OF EQ/WEAPONS	37	175	-297,898	8,925
W011	LEASE-RENTAL OF EQ/NUCLEAR ORDNANCE	0	0	0	0
W012	LEASE-RENTAL OF EQ/FIRE CONTROL EQUIP	0	36	0	106
W014	LEASE-RENTAL OF EQ/GUIDED MISSILES	11	0	0	0
W015	LEASE-RENTAL OF EQ/AIRCRAFT	884	3,261	2,684	18,546
W016	LEASE-RENTAL OF EQ/AIRCRAFT COMPONENTS	0	11	99	7,620
W017	LEASE-RENTAL OF EQ/AIRCRAFT GROUND EQUIP	26	22	1,472	1,039
W018	LEASE-RENTAL OF EQ/SPACE VEHICLES	NA	-37	307	139
W019	LEASE-RENTAL OF EQ/SHIPS-SML CRAFT-DOCKS	23,570	14,792	15,926	6,451
W020	LEASE-RENTAL OF EQ/MARINE EQUIP	8,528	8,295	5,786	9,421
W022	LEASE-RENTAL OF EQ/RAILWAY EQUIP	508	61	208	183
W023	LEASE-RENTAL OF EQ/VEHICLES-TRAILERS-CYC	7,687	12,407	17,543	19,178
W024	LEASE-RENTAL OF EQ/TRACTORS	843	811	95	836
W025	LEASE-RENTAL OF EQ/VEHICULAR EQUIP	387	78	284	0
W026	LEASE-RENTAL OF EQ/TIRES & TUBES	NA	71	0	0
W028	LEASE-RENTAL OF EQ/ENGINES & TURBINES	12	13	53	104
W029	LEASE-RENTAL OF EQ/ENGINE ACCESSORIES	17	0	0	0
W030	LEASE-RENTAL OF EQ/MECH POWER TRANS EQ	949	-190	818	633
W034	LEASE-RENTAL OF EQ/METALWORK MACHINERY	118	99	132	288
W035	LEASE-RENTAL OF EQ/SERVICE & TRADE EQUIP	1,214	1,225	975	1,255
W036	LEASE-RENTAL OF EQ/INDUSTRIAL MACHINERY	18,519	28,230	24,723	22,078
W037	LEASE-RENTAL OF EQ/AGRICULTURE MACHINERY	0	0	0	0
W038	LEASE-RENTAL OF EQ/CONSTRUCTION EQUIP	7,763	8,786	5,381	6,384

**Table B. Other Services and Construction
(Continued)
(Amounts in Thousands)**

SERVICE CODE	DESCRIPTION	FISCAL YEAR			
		1981	1982	1983	1984
W	LEASE OR RENTAL OF EQUIPMENT				
W039	LEASE-RENTAL OF EQ/MATERIALS HANDLING EQ	2,338	2,584	2,750	3,877
W040	LEASE-RENTAL OF EQ/ROPE-CABLE-CHAIN	0	0	0	0
W041	LEASE-RENTAL OF EQ/REFRIGERATION - AC EQ	105	500	254	557
W042	LEASE-RENTAL OF EQ/FIRE-RESCUE-SAFETY EQ	128	152	0	0
W043	LEASE-RENTAL OF EQ/PUMPS & COMPRESSORS	465	338	145	2,840
W044	LEASE-RENTAL OF EQ/FURNACE-NUCLEAR REAC	367	451	515	250
W045	LEASE-RENTAL OF EQ/PLUMBING-HEATING EQ	578	415	229	551
W046	LEASE-RENTAL OF EQ/WATER PURIFICATION EQ	557	527	473	517
W047	LEASE-RENTAL OF EQ/PIPE-TUBING-HOSE	142	142	0	0
W049	LEASE-RENTAL OF EQ/MAINTENANCE SHOP EQ	72	392	1,127	469
W051	LEASE-RENTAL OF EQ/HAND TOOLS	33	32	0	0
W052	LEASE-RENTAL OF EQ/MEASURING TOOLS	17	29	0	0
W053	LEASE-RENTAL OF EQ/HARDWARE & ABRASIVES	NA	13	0	0
W054	LEASE-RENTAL OF EQ/PREFAB STRUCTURES	555	2,279	1,125	915
W056	LEASE-RENTAL OF EQ/CONSTRUCTION MATERIAL	0	20	0	0
W058	LEASE-RENTAL OF EQ/COMMUNICATION EQUIP	11,244	91,171	79,074	109,512
W059	LEASE-RENTAL OF EQ/ELECTRICAL-ELCT EQUIP	1,724	1,866	2,205	2,500
W061	LEASE-RENTAL OF EQ/POWER DISTRIBUTION EQ	150	303	405	125
W063	LEASE-RENTAL OF EQ/ALARM & SIGNAL SYSTEM	2,000	2,352	2,077	599
W065	LEASE-RENTAL OF EQ/MEDICAL & DENTAL EQ	553	541	552	674
W066	LEASE-RENTAL OF EQ/INSTRUMENTS & LAB EQ	1,505	2,154	531	1,715
W067	LEASE-RENTAL OF EQ/PHOTOGRAPHIC EQUIP	1,579	2,075	1,535	1,240
W068	LEASE-RENTAL OF EQ/CHEMICAL PRODUCTS	0	159	0	0
W069	LEASE-RENTAL OF EQ/TRAINING AIDS-DEVICES	209	255	54	155
W070	LEASE-RENTAL OF EQ/ADP EQUIP & SUPPLIES	407,279	459,244	755,255	555,592
W071	LEASE-RENTAL OF EQ/FURNITURE	370	513	559	211
W072	LEASE-RENTAL OF EQ/HOUSEHOLD FURNISHINGS	2,489	2,959	1,599	1,330
W073	LEASE-RENTAL OF EQ/FOOD PREP-SERVING EQ	354	270	140	51
W074	LEASE-RENTAL OF EQ/OFFICE MACHINES	35,995	55,022	55,140	51,323
W075	LEASE-RENTAL OF EQ/OFFICE SUPPLIES	525	-3,149	552	757
W076	LEASE-RENTAL OF EQ/BOOKS-MAPS-PUBS	553	1,024	535	1,555
W077	LEASE-RENTAL OF EQ/MUSICAL INST-RADIO-TV	1,504	43	0	0
W078	LEASE-RENTAL OF EQ/RECREATIONAL EQUIP	23	255	0	0
W079	LEASE-RENTAL OF EQ/CLEANING EQUIP	545	249	107	422
W080	LEASE-RENTAL OF EQ/BRUSHES-PAINTS-SEALER	72	105	0	0
W081	LEASE-RENTAL OF EQ/CONTAINERS-PACKAGING	32	30	1,712	255
W083	LEASE-RENTAL OF EQ/TEXTILES-LEATHER-FURS	59	79	1,114	149
W084	LEASE-RENTAL OF EQ/CLOTHING - INDIVID EQ	35	152	35	459
W085	LEASE-RENTAL OF EQ/TOILETRIES	0	0	0	0
W087	LEASE-RENTAL OF EQ/AGRICULTURAL SUPPLIES	NA	11	0	0
W088	LEASE-RENTAL OF EQ/LIVE ANIMALS	15	0	0	0
W089	LEASE-RENTAL OF EQ/SUBSISTENCE	5,354	10,225	9,747	11,545
W091	LEASE-RENTAL OF EQ/FUELS-LUBRICANTS-OILS	0	0	197	0
W099	LEASE-RENTAL OF EQ/MISCELLANEOUS EQUIP	11,451	5,477	5,555	7,759
W	TOTAL LEASE OR RENTAL OF EQUIPMENT	559,402	719,147	735,575	853,552
X	LEASE OR RENTAL OF FACILITIES				
X111	LEASE-RENT OF FAC /OFFICE BUILDINGS	315	754	247	290
X119	LEASE-RENT OF FAC /OTHER ADMIN-SVC BLDGS	133	224	3,012	519
X11	TOTAL LEASE-RENT OF FAC/ADMIN & SVC BUILDINGS	448	978	3,259	809
X123	LEASE-RENT OF FAC /RADAR & NAV FACILITY	512	0	0	551
X124	LEASE-RENT OF FAC /AIRPORT RUNWAYS	0	0	0	0
X125	LEASE-RENT OF FAC /MISSILE SYSTEMS FAC	55	25	0	0
X127	LEASE-RENT OF FAC /ELCT AND COMM SYS FAC	NA	NA	NA	335
X128	LEASE-RENT OF FAC /ELCT AND COMM SYS FAC	294	343	555	0
X129	LEASE-RENT OF FAC /OTHER AIRFIELD STRUCT	95	0	271	512
X12	TOTAL LEASE-RENT OF FAC/AIRFIELD, COMM & MISSILE FAC	1,070	371	827	1,411
X131	LEASE-RENT OF FAC /SCHOOLS	0	10	0	555
X139	LEASE-RENT OF FAC /EDUCATIONAL BLDGS	21	741	529	430
X13	TOTAL LEASE-RENT OF FAC/EDUCATIONAL BUILDINGS	21	751	529	1,025

**Table B. Other Services and Construction
(Continued)
(Amounts in Thousands)**

SERVICE CODE	DESCRIPTION	FISCAL YEAR			
		1981	1982	1983	1984
X149	LEASE-RENT OF FAC /OTHER HOSPITAL BLDGS	NA	34	0	23
X14	TOTAL LEASE-RENT OF FAC/HOSPITAL BUILDINGS	0	34	0	23
X151	LEASE-RENT OF FAC /AMMUNITION FACILITIES	0	0	0	0
X152	LEASE-RENT OF FAC /MAINTENANCE BLDGS	0	71	0	0
X153	LEASE-RENT OF FAC /PRODUCTION BLDGS	150	0	0	38
X154	LEASE-RENT OF FAC /SHIP CONST-REPAIR FAC	0	42	0	0
X159	LEASE-RENT OF FAC /OTHER INDUSTRIAL BLDG	74	0	0	0
X15	TOTAL LEASE-RENT OF FAC/INDUSTRIAL BUILDINGS	224	113	0	38
X161	LEASE-RENT OF FAC /FAMILY HOUSING	63	80	56	431
X162	LEASE-RENT OF FAC /RECREATIONAL BLDGS	0	66	31	0
X163	LEASE-RENT OF FAC /TROOP HOUSING	691	1,411	751	2,482
X169	LEASE-RENT OF FAC /OTHER RESIDENTIAL BLD	566	211	760	257
X16	TOTAL LEASE-RENT OF FAC/RESIDENTIAL BUILDINGS	1,540	1,768	1,598	3,170
X171	LEASE-RENT OF FAC /AMMO STORAGE BLDGS	NA	NA	NA	4,630
X172	LEASE-RENT OF FAC /FOOD STORAGE BLDGS	261	403	366	99
X173	LEASE-RENT OF FAC /FUEL STORAGE BLDGS	42,383	69,445	60,963	41,160
X174	LEASE-RENT OF FAC /OPEN STORAGE FAC	NA	12	58	50
X179	LEASE-RENT OF FAC /OTHER WAREHOUSE BLDGS	101	375	52	2,590
X17	TOTAL LEASE-RENT OF FAC/WAREHOUSE BUILDINGS	42,765	70,235	61,481	48,529
X181	LEASE-RENT OF FAC /R&D GOOC FACILITIES	0	0	0	0
X18	TOTAL LEASE-RENT OF FAC/R & D FACILITIES	0	0	0	0
X191	LEASE-RENT OF FAC /EXHIBITION BUILDINGS	0	0	0	0
X199	LEASE-RENT OF FAC /MISCELLANEOUS BLDGS	766	710	5,640	678
X19	TOTAL LEASE-RENT OF FAC/OTHER BUILDINGS	766	710	5,640	678
X1	TOTAL LEASE-RENT OF FAC/BUILDING STRUCTURES	46,634	74,960	73,614	55,686
X211	LEASE-RENT OF FAC /DAMS	0	0	0	0
X219	LEASE-RENT OF FAC /OTHER CONSV STRUCTURE	100	0	0	400
X21	TOTAL LEASE-RENT OF FAC/CONSERVATION & DEVELOPMENT	100	0	0	400
X224	LEASE-RENT OF FAC/PARKING FAC	19	19	0	41
X22	TOTAL LEASE-RENT OF FAC/HIGHWAYS ROADS STREETS & BRIDGES	19	19	0	41
X231	LEASE-RENT OF FAC /EPG - COAL	0	0	0	0
X239	LEASE-RENT OF FAC /EPG - OTHER	NA	186	0	0
X23	TOTAL LEASE-RENT OF FAC/ELECTRIC POWER GENERATION (EPG)	0	186	0	0
X241	LEASE-RENT OF FAC /FUEL SUPPLY	NA	30	29	0
X244	LEASE-RENT OF FAC /SEWERAGE & WASTE	0	0	0	252
X249	LEASE-RENT OF FAC /OTHER UTILITIES	0	0	0	0
X24	TOTAL LEASE-RENT OF FAC/UTILITIES	0	30	29	252
X291	LEASE-RENT OF FAC /RECREA NON-BLDG STRUC	0	12	0	0
X299	LEASE-RENT OF FAC /OTHER NON-BLDG STRUCT	1,562	2,261	338	3,743
X29	TOTAL LEASE-RENT OF FAC/OTHER NON-BUILDING STRUCTURES	1,562	2,273	338	3,743

**Table B. Other Services and Construction
(Continued)
(Amounts in Thousands)**

SERVICE CODE	DESCRIPTION	FISCAL YEAR			
		1981	1982	1983	1984
X2	TOTAL LEASE-RENT OF FAC/NON-BUILDING STRUCTURES	1,661	2,508	367	4,436
X	TOTAL LEASE OR RENTAL OF FACILITIES	48,515	77,466	73,991	60,322
Y	CONSTRUCTION OF STRUCTURES & FACILITIES				
Y111	CONSTRUCTION/OFFICE BUILDINGS	51,271	79,434	69,899	45,876
Y119	CONSTRUCTION/OTHER ADMIN & SERVICE BLDGS	150,369	121,738	163,464	173,220
Y11	TOTAL CONSTRUCTION/ADMIN & SVC BUILDINGS	201,640	201,169	253,463	219,796
Y121	CONSTRUCTION/AIR TRAFFIC CONTROL TOWERS	5,105	1,419	3,793	2,104
Y122	CONSTRUCTION/AIR TRAFFIC TRAINING FAC	4,139	2,489	0	6,579
Y123	CONSTRUCTION/RADAR & NAVIGATIONAL FAC	6,369	1,829	11,229	6,914
Y124	CONSTRUCTION/AIRPORT RUNWAYS	33,646	66,144	36,369	31,599
Y125	CONSTRUCTION/AIRPORT TERMINALS	607	2,091	2,110	3,662
Y126	CONSTRUCTION/MISSILE SYSTEM FACILITIES	91,631	79,924	69,171	69,703
Y127	ELECTRONIC & COMMUNICATION FACILITIES	NA	94,248	21,766	76,679
Y128		60,053	1,288	0	0
Y129	CONSTRUCTION/OTHER AIRFIELD STRUCTURES	235,661	179,691	262,373	263,743
Y12	TOTAL CONSTRUCTION/AIRFIELD, COMM & MISSILE FACILITIES	459,529	421,096	408,600	458,380
Y131	CONSTRUCTION/SCHOOLS	37,699	28,903	34,397	41,085
Y139	CONSTRUCTION/OTHER EDUCATIONAL BUILDINGS	27,992	184,482	69,696	99,654
Y13	TOTAL CONSTRUCTION/EDUCATIONAL BUILDINGS	65,691	213,385	124,293	140,739
Y141	CONSTRUCTION/HOSPITALS AND INFIRMARIES	108,654	138,384	123,561	61,078
Y142	CONSTRUCTION/LABORATORIES AND CLINICS	17,651	32,693	11,646	37,266
Y149	CONSTRUCTION/OTHER HOSPITAL BUILDINGS	20,329	4,771	16,706	27,269
Y14	TOTAL CONSTRUCTION/HOSPITAL BUILDINGS	146,634	175,846	151,913	145,602
Y151	CONSTRUCTION/AMMUNITION FACILITIES	41,316	36,116	73,259	41,677
Y152	CONSTRUCTION/MAINTENANCE BUILDINGS	66,330	90,772	62,406	236,760
Y153	CONSTRUCTION/PRODUCTION BUILDINGS	7,616	50,221	12,692	4,226
Y154	CONSTRUCTION/SHIP CONSTR & REPAIR FAC	13,289	6,641	656	7,134
Y155	CONSTRUCTION/TANK-AUTOMOTIVE FAC	4,791	10,349	11,647	12,371
Y159	CONSTRUCTION/OTHER INDUSTRIAL BUILDINGS	207,791	115,401	204,464	279,266
Y15	TOTAL CONSTRUCTION/INDUSTRIAL BUILDINGS	341,133	311,800	365,323	661,732
Y161	FAMILY HOUSING FACILITIES	666,491	241,067	354,960	313,036
Y162	CONSTRUCTION/RECREATIONAL BUILDINGS	27,266	66,006	29,666	90,774
Y163	TROOP HOUSING FACILITIES	400,402	477,158	276,617	236,441
Y164	CONSTRUCTION/DINING FACILITIES	6,462	19,261	16,322	33,672
Y165	RELIGIOUS FACILITIES	9,970	4,706	27,977	11,691
Y169	CONSTRUCTION/OTHER RESIDENTIAL BUILDINGS	44,414	201,054	62,741	104,436
Y16	TOTAL CONSTRUCTION/RESIDENTIAL BUILDINGS	1,179,025	999,274	790,366	769,652
Y171	CONSTRUCTION/AMMUNITION STORAGE BUILDING	15,440	16,754	6,003	27,629
Y172	CONSTRUCTION/FOOD OR GRAIN STORAGE BLDGS	556	4,634	1,016	22,412
Y173	CONSTRUCTION/FUEL STORAGE BUILDINGS	13,146	16,240	27,332	15,796
Y174	CONSTRUCTION/OPEN STORAGE FACILITIES	6,665	1,466	4,369	16,786
Y179	CONSTRUCTION/OTHER WAREHOUSE BUILDINGS	77,512	52,776	41,146	63,910
Y17	TOTAL CONSTRUCTION WAREHOUSE BUILDINGS	114,407	94,070	61,666	169,414
Y181	CONSTRUCTION/R&D - GOGO FACILITIES	12,953	4,060	1,629	3,203
Y182	CONSTRUCTION/R&D - GOGO FACILITIES	16,524	7,230	675	3,480
Y18	TOTAL CONSTRUCTION/R & D FACILITIES	28,477	11,290	2,104	6,683

**Table B. Other Services and Construction
(Continued)
(Amounts in Thousands)**

SERVICE CODE	DESCRIPTION	FISCAL YEAR			
		1981	1982	1983	1984
Y191	CONSTRUCTION/MUSEUMS & EXHIBITION BLDGS	11,789	18,212	34,782	47,034
Y192	CONSTRUCTION/TESTING & MEASUREMENT BLDGS	34,200	7,227	20,774	13,884
Y199	CONSTRUCTION/MISCELLANEOUS BUILDINGS	304,799	882,811	840,860	720,769
Y19	TOTAL CONSTRUCTION/OTHER BUILDINGS	350,788	1,019,250	896,416	781,446
Y1	TOTAL CONSTRUCTION/BUILDINGS & FACILITY STRUCTURES	2,887,438	3,448,882	2,884,185	3,292,884
Y211	CONSTRUCTION/DAMS	230,182	252,380	231,010	180,418
Y212	CONSTRUCTION/CANALS	258,370	283,384	108,311	44,817
Y213	CONSTRUCTION/MINE FIRE CONTROL	0	0	0	0
Y214	CONSTRUCTION/MINE SUBSIDENCE CONTROL	NA	NA	187	32
Y215	CONSTRUCTION/SURFACE MINE RECLAMATION	NA	NA	84	-128
Y216	DREDGING	NA	NA	88,237	288,841
Y219	CONSTRUCTION/OTHER CONSERVATION-DEVL STR	118,370	198,222	232,821	287,372
Y21	TOTAL CONSTRUCTION/CONSERVATION & DEVELOPMENT	804,892	711,936	638,640	781,182
Y221	CONSTRUCTION/AIRPORT SERVICE ROADS	1,422	8,878	5,708	8,081
Y222	CONSTRUCTION/HIGHWAYS-ROADS-STG-BRIDGES	110,212	273,382	124,800	132,285
Y223	CONSTRUCTION/TUNNELS & SUBSURFACE STRUCT	17,329	12,288	7,783	17,082
Y224	CONSTRUCTION/PARKING FACILITIES	4,538	3,803	18,072	14,081
Y22	TOTAL CONSTRUCTION/HIGHWAYS, ROADS, STREETS & BRIDGES	133,499	298,109	154,161	172,478
Y231	CONSTRUCTION/EPG - COAL	82	18,029	8,484	183
Y232	CONSTRUCTION/EPG - GAS	8,130	488	0	33
Y233	CONSTRUCTION/EPG - GEOTHERMAL	NA	82	0	0
Y234	CONSTRUCTION/EPG - HYDRO	88,028	18,187	17,080	3,333
Y235	CONSTRUCTION/EPG - NUCLEAR	NA	17	0	0
Y236	CONSTRUCTION/EPG - PETROLEUM	378	338	340	3,881
Y237	CONSTRUCTION/EPG - SOLAR	840	880	432	26
Y239	CONSTRUCTION/EPG - OTHER INCL TRANSM	3,280	3,845	11,008	14,833
Y23	TOTAL CONSTRUCTION/ELECTRIC POWER GENERATION (EPG)	78,748	38,448	34,384	21,888
Y241	CONSTRUCTION/FUEL SUPPLY	31,648	18,847	8,709	48,488
Y242	CONSTRUCTION/HEATING AND COOLING PLANTS	28,728	47,708	67,812	23,813
Y243	CONSTRUCTION/POLLUTION ABATEMENT & CONTR	12,833	7,288	2,818	4,418
Y244	CONSTRUCTION/SEWERAGE & WASTE	84,348	28,832	40,838	22,482
Y245	CONSTRUCTION/WATER SUPPLY	40,133	41,434	31,880	27,801
Y249	CONSTRUCTION/OTHER UTILITIES	82,132	103,388	138,808	118,340
Y24	TOTAL CONSTRUCTION/UTILITIES	287,519	247,888	308,825	241,219
Y291	CONSTRUCTION/RECREATION NON-BLDG STRUCTS	27,748	28,888	21,778	32,288
Y293	UNIMPROVED REAL PROPERTY (LAND)	NA	NA	NA	2,810
Y299	CONSTRUCTION/ALL OTHER NON-BLDG STRUCTS	834,717	828,281	410,884	287,730
Y29	TOTAL CONSTRUCTION/OTHER NON-BUILDING STRUCTURES	862,465	857,169	432,662	322,828
Y2	TOTAL CONSTRUCTION/NON-BUILDING STRUCTURES	1,884,118	1,948,328	1,888,723	1,808,834
Y	TOTAL CONSTRUCTION OF STRUCTURES & FACILITIES	4,851,588	5,382,210	4,480,808	4,802,488
Z	MAINTENANCE, REPAIR OR ALTERATION OF REAL PROPERTY				
Z111	MAINT-REPAIR-ALTER/OFFICE BUILDINGS	83,488	71,834	88,888	111,804
Z119	MAINT-REPAIR-ALTER/OTHER ADMIN-SVC BLDGS	121,532	188,042	188,780	218,088
Z11	TOTAL MAINT-REPAIR-ALTER/ADMIN & SVC BUILDINGS	205,020	259,876	277,668	329,892

**Table B. Other Services and Construction
(Continued)
(Amounts in Thousands)**

SERVICE CODE	DESCRIPTION	FISCAL YEAR			
		1981	1982	1983	1984
Z121	MAINT-REPAIR-ALTER/AIR TRAFFIC TOWERS	1,298	936	810	2,222
Z122	MAINT-REPAIR-ALTER/AIR TRAFFIC TNG FAC	245	3,277	697	884
Z123	MAINT-REPAIR-ALTER/RADAR & NAV FACILITY	1,946	12,788	8,358	8,506
Z124	MAINT-REPAIR-ALTER/AIRPORT RUNWAYS	68,123	94,159	90,687	62,091
Z125	MAINT-REPAIR-ALTER/AIRPORT TERMINALS	4,888	3,019	1,283	10,402
Z126	MAINT-REPAIR-ALTER/MISSILE SYSTEMS FAC	6,464	22,069	13,615	14,584
Z127	ELECTRONIC & COMMUNICATION FACILITIES	NA	11,872	18,591	36,237
Z128	MAINT-REPAIR-ALTER/ELECT AND COMM SYS FAC	17,741	1,888	58	1,992
Z129	MAINT-REPAIR-ALTER/OTHER AIRFIELD STRUCT	53,982	61,479	65,950	93,367
Z12	TOTAL MAINT-REPAIR-ALTER/AIRFIELD, COMM & MISSILE FAC	174,485	211,085	220,029	250,268
Z131	MAINT-REPAIR-ALTER/SCHOOLS	11,240	20,715	17,183	22,962
Z139	MAINT-REPAIR-ALTER/EDUCATIONAL BLDGS	23,202	20,149	31,237	15,557
Z13	TOTAL MAINT-REPAIR-ALTER/EDUCATIONAL BUILDINGS	34,442	40,864	48,420	38,519
Z141	MAINT-REPAIR-ALTER/HOSPITALS & INFIRMARY	31,618	153,981	40,218	34,387
Z142	MAINT-REPAIR-ALTER/LABS & CLINICS	19,028	18,288	6,691	21,432
Z148	MAINT-REPAIR-ALTER/OTHER HOSPITAL BLDGS	12,811	7,112	8,280	12,818
Z14	TOTAL MAINT-REPAIR-ALTER/HOSPITAL BUILDINGS	63,453	179,361	55,187	68,437
Z151	MAINT-REPAIR-ALTER/AMMUNITION FACILITIES	6,481	7,496	4,531	10,042
Z152	MAINT-REPAIR-ALTER/MAINTENANCE BLDGS	81,320	42,296	41,108	58,801
Z153	MAINT-REPAIR-ALTER/PRODUCTION BLDGS	28,821	19,008	24,716	38,907
Z154	MAINT-REPAIR-ALTER/SHIP CONST-REPAIR FAC	4,340	1,171	987	7,012
Z155	MAINT-REPAIR-ALTER/TANK-AUTOMOTIVE FAC	2,372	5,421	5,374	6,987
Z159	MAINT-REPAIR-ALTER/OTHER INDUSTRIAL BLDG	34,980	84,079	104,215	180,223
Z15	TOTAL MAINT-REPAIR-ALTER/INDUSTRIAL BUILDINGS	158,294	139,469	180,931	299,772
Z161	MAINT-REPAIR-ALTER/FAMILY HOUSING	406,597	450,543	616,934	813,650
Z162	MAINT-REPAIR-ALTER/RECREATIONAL BLDGS	26,556	31,024	50,042	49,789
Z163	MAINT-REPAIR-ALTER/TROOP HOUSING	131,868	200,571	231,904	231,629
Z164	MAINT-REPAIR-ALTER/DINING FACILITIES	22,937	20,730	27,904	39,307
Z165	MAINT-REPAIR-ALTER/RELIGIOUS FAC	1,872	2,303	3,735	5,903
Z169	MAINT-REPAIR-ALTER/OTHER RESIDENTIAL BLD	31,113	33,903	41,058	42,589
Z16	TOTAL MAINT-REPAIR-ALTER/RESIDENTIAL BUILDINGS	620,961	739,074	971,577	982,667
Z171	MAINT-REPAIR-ALTER/AMMO STORAGE BLDGS	5,286	9,542	9,958	5,968
Z172	MAINT-REPAIR-ALTER/FOOD STORAGE BLDGS	11,130	13,763	6,773	6,457
Z173	MAINT-REPAIR-ALTER/FUEL STORAGE BLDGS	15,842	5,937	12,557	7,072
Z174	MAINT-REPAIR-ALTER/OPEN STORAGE FAC	4,607	1,864	2,993	6,507
Z179	MAINT-REPAIR-ALTER/OTHER WAREHOUSE BLDGS	28,114	38,017	43,751	54,051
Z17	TOTAL MAINT-REPAIR-ALTER/WAREHOUSE BUILDINGS	64,979	69,123	76,032	80,055
Z181	MAINT-REPAIR-ALTER/R&D GOGO FACILITIES	6,244	10,813	12,378	27,420
Z182	MAINT-REPAIR-ALTER/R&D GOGO FACILITIES	10,289	8,888	20,001	14,930
Z18	TOTAL MAINT-REPAIR-ALTER/R & D FACILITIES	16,533	19,481	32,379	42,350
Z191	MAINT-REPAIR-ALTER/EXHIBITION BUILDINGS	1,449	2,566	915	884
Z192	MAINT-REPAIR-ALTER/TESTING BUILDINGS	5,130	14,041	6,268	10,082
Z199	MAINT-REPAIR-ALTER/MISCELLANEOUS BLDGS	254,019	315,436	368,844	435,881
Z19	TOTAL MAINT-REPAIR-ALTER/OTHER BUILDINGS	260,598	332,043	376,027	446,907
Z1	TOTAL MAINT-REPAIR-ALTER/BUILDING STRUCTURES	1,598,743	1,960,176	2,233,208	2,638,084
Z211	MAINT-REPAIR-ALTER/DAMS	21,987	29,772	24,111	35,095
Z212	MAINT-REPAIR-ALTER/CANALS	8,285	2,924	6,830	5,868
Z213	MAINT-REPAIR-ALTER/MINE FIRE CONTROL	1,154	948	631	0
Z215	MAINT-REPAIR-ALTER/SURFACE MINE RECLAM	NA	NA	56	51
Z216	MAINTENANCE DREDGING	NA	NA	NA	7,818
Z219	MAINT-REPAIR-ALTER/OTHER CONSV STRUCTURE	65,147	56,104	53,100	62,392
Z21	TOTAL MAINT-REPAIR-ALTER/CONSERVATION & DEVELOPMENT	96,553	89,748	84,728	111,224

**Table B. Other Services and Construction
(Concluded)**
(Amounts in Thousands)

SERVICE CODE	DESCRIPTION	FISCAL YEAR			
		1981	1982	1983	1984
Z221	MAINT-REPAIR-ALTER/AIRPORT SERVICE ROADS	6,188	9,081	18,489	10,184
Z222	MAINT-REPAIR-ALTER/HWYS-ROADS-BRIDGES	123,324	129,821	117,893	119,437
Z223	MAINT-REPAIR-ALTER/TUNNELS-SUBSURF STRUC	2,493	4,173	4,698	3,174
Z224	MAINT-REPAIR-ALTER/PARKING FAC	17,157	25,775	28,109	21,416
Z22	TOTAL MAINT-REPAIR-ALTER/HIGHWAYS ROADS STREETS BRIDGES	151,162	168,830	169,189	154,211
Z231	MAINT-REPAIR-ALTER/EPG - COAL	0	288	155	330
Z232	MAINT-REPAIR-ALTER/EPG - GAS	823	1,092	887	795
Z234	MAINT-REPAIR-ALTER/EPG - HYDRO	206	483	1,984	181
Z236	MAINT-REPAIR-ALTER/EPG - PETROLEUM	726	6,106	4,244	1,725
Z237	MAINT-REPAIR-ALTER/EPG - SOLAR	0	997	0	466
Z239	MAINT-REPAIR-ALTER/EPG - OTHER	10,992	12,710	8,522	14,910
Z23	TOTAL MAINT-REPAIR-ALTER/ELECTRIC POWER GENERATION (EPG)	12,747	21,273	15,982	18,407
Z241	MAINT-REPAIR-ALTER/FUEL SUPPLY	17,270	18,921	12,281	25,742
Z242	MAINT-REPAIR-ALTER/HEATING & COOL PLANTS	71,103	75,875	118,608	103,309
Z243	MAINT-REPAIR-ALTER/POLLUTION ABATEMENT	2,326	22,884	1,487	1,133
Z244	MAINT-REPAIR-ALTER/SEWERAGE & WASTE	32,609	39,488	30,902	48,107
Z245	MAINT-REPAIR-ALTER/WATER SUPPLY	54,060	46,848	29,629	52,831
Z249	MAINT-REPAIR-ALTER/OTHER UTILITIES	74,860	92,474	101,025	116,644
Z24	TOTAL MAINT-REPAIR-ALTER/UTILITIES	252,226	296,266	293,882	347,766
Z291	MAINT-REPAIR-ALTER/RECREA NON-BLDG STRUC	11,522	15,041	15,673	22,991
Z293	UNIMPROVED REAL PROPERTY (LAND)	NA	NA	NA	844
Z299	MAINT-REPAIR-ALTER/OTHER NON-BLDG STRUCT	301,211	375,249	472,374	511,804
Z29	TOTAL MAINT-REPAIR-ALTER/OTHER NON-BUILDING STRUCTURES	312,733	390,290	488,047	535,439
Z2	TOTAL MAINT-REPAIR-ALTER/NON-BUILDING STRUCTURES	625,423	966,409	1,051,438	1,167,047
Z	TOTAL MAINTENANCE, REPAIR OR ALTERATION OF REAL PROPERTY	2,424,166	2,928,585	3,284,846	3,703,111
	TOTAL OTHER SERVICES AND CONSTRUCTION	22,846,534	28,956,102	30,505,481	31,103,953

TABLE C

**Net Value of
Prime Contract Awards Over \$25,000
for Supplies and Equipment,
by Federal Supply Classification
Code and Description:
FY 1981, 1982, 1983, and 1984**

Table C. Summary of Supplies and Equipment
(Amounts in Thousands)

FSC CODE	DESCRIPTION	FISCAL YEAR			
		1981	1982	1983	1984
10	WEAPONS	992,625	1,472,824	1,485,246	1,171,723
11	NUCLEAR ORDNANCE	113,718	103,125	46,566	38,373
12	FIRE CONTROL EQUIPMENT	905,670	1,602,083	1,832,614	1,803,378
13	AMMUNITION AND EXPLOSIVES	1,658,906	3,001,064	2,378,708	2,801,919
14	GUIDED MISSILES	4,907,804	5,798,838	6,934,063	7,803,899
15	AIRCRAFT + AIRFRAME STRUCTURAL COMPONENTS	9,351,056	10,844,929	15,052,170	18,019,524
16	AIRCRAFT COMPONENTS AND ACCESSORIES	1,375,739	1,402,842	2,768,344	2,181,233
17	ACFT LAUNCHING, LDG, + GND, HANDLING EQUIPMENT	203,352	349,327	346,811	314,263
18	SPACE VEHICLES	458,093	733,363	864,019	804,231
19	SHIPS, SMALL CFT, PONTOONS + FLOATING DOCKS	4,257,580	4,592,601	7,469,428	4,819,410
20	SHIP AND MARINE EQUIPMENT	90,195	197,980	211,295	225,416
22	RAILWAY EQUIPMENT	9,332	15,194	1,295	18,259
23	MOTOR VEHICLES, TRAILERS, AND CYCLES	2,015,231	2,491,289	2,922,036	3,217,224
24	TRACTORS	31,180	17,020	61,054	20,553
25	VEHICULAR EQUIPMENT COMPONENTS	877,656	1,357,487	1,132,319	1,034,604
26	TIRES AND TUBES	76,115	100,588	91,960	90,745
28	ENGINES, TURBINES, AND COMPONENTS	5,021,497	5,414,128	5,172,324	5,888,880
29	ENGINE ACCESSORIES	541,004	529,401	513,771	504,462
30	MECHANICAL POWER TRANSMISSION EQUIPMENT	87,500	87,856	110,795	70,592
31	BEARINGS	96,735	116,281	78,344	98,544
32	WOODWORKING MACHINERY AND EQUIPMENT	2,011	3,441	962	1,485
34	METALWORKING MACHINERY	271,552	62,735	77,971	161,537
35	SERVICE AND TRADE EQUIPMENT	11,012	15,147	7,564	22,894
36	SPECIAL INDUSTRY MACHINERY	77,319	118,972	158,960	85,115
37	AGRICULTURAL MACHINERY AND EQUIPMENT	4,065	4,498	4,038	2,912
38	CONST, MINING, EXCAVATING + HWY MAINTENANCE EQUIP	39,155	115,913	301,172	245,972
39	MATERIALS HANDLING EQUIPMENT	213,333	279,250	241,095	213,351
40	ROPE, CABLE, CHAIN AND FITTINGS	39,267	35,417	28,593	31,617
41	REFRIGERATION + AIR CONDITIONING EQUIPMENT	121,117	154,809	114,406	128,417
42	FIRE FIGHTING, RESCUE + SAFETY EQUIPMENT	220,123	268,040	218,423	330,831
43	PUMPS AND COMPRESSORS	167,520	209,773	193,462	229,013
44	FURNACE, SILAM PLANT, DRYING EQUIP + NUCL REACTORS	321,576	1,334,541	1,633,577	615,776
45	PLUMBING, HEATING + SANITATION EQUIPMENT	31,129	40,802	29,745	29,636
46	WATER PURIFICATION + SEWAGE TREATMENT EQUIPMENT	27,648	59,846	10,995	37,533
47	PIPE, TUBING, HOSE + FITTINGS	121,981	182,815	95,388	103,426
48	VALVES	136,189	175,329	126,122	145,453
49	MAINTENANCE + REPAIR SHOP EQUIPMENT	541,442	631,239	875,888	786,654
51	HAND TOOLS	18,114	25,643	20,315	19,913
52	MEASURING TOOLS	6,871	4,788	5,562	3,138
53	HARDWARE AND ABRASIVES	124,693	179,183	104,594	102,419
54	PREFABRICATED STRUCTURES + SCAFFOLDING	102,969	159,248	144,825	202,257
55	LUMBER, MILLWORK, PLYWOOD + VENEER	34,091	27,698	21,527	28,737
56	CONSTRUCTION + BUILDING MATERIALS	72,560	78,593	74,323	44,487
58	COMMUNICATION EQUIPMENT	6,817,346	7,645,598	6,605,827	10,080,042
59	ELECTRICAL + ELECTRONIC EQUIPMENT COMPONENTS	1,293,488	1,591,190	1,710,883	1,988,876
60	FIBER OPTICS MATS, COMPONENTS, ASSEMBLIES & ACCESSO	4,075	2,547	6,599	15,149
61	ELECTRIC WIRE, + POWER + DISTRIBUTION EQUIPMENT	609,450	613,796	671,931	673,715
62	LIGHTING FIXTURES AND LAMPS	67,210	90,033	78,957	75,543
63	ALARM AND SIGNAL SYSTEMS	25,088	20,698	52,314	42,064
65	MEDICAL, DENTAL, + VETERINARY EQUIPMENT + SUPPLIES	384,694	406,776	412,082	484,837
66	INSTRUMENTS AND LABORATORY EQUIPMENT	1,230,117	1,629,771	1,460,528	1,508,199
67	PHOTOGRAPHIC EQUIPMENT	145,071	197,326	139,595	203,090
68	CHEMICALS AND CHEMICAL PRODUCTS	112,169	123,441	111,934	101,499
69	TRAINING AIDS AND DEVICES	580,809	632,742	725,205	738,458
70	GENL PURPOSE ADPL SOFTWARE, SUPPLIES + SUPPORT EQU	610,375	861,730	1,114,577	1,548,732
71	FURNITURE	91,955	164,259	99,453	180,318
72	HOUSEHOLD + COML FURNISHINGS + APPLIANCES	72,311	82,843	70,094	85,786
73	FOOD PREPARATION AND SERVING EQUIPMENT	40,648	61,424	47,640	43,706
74	OFFICE MACHINES, VISIBLE RECORD EQUIP + ADP EQUIP	41,461	52,193	57,132	75,100
75	OFFICE SUPPLIES AND DEVICES	40,552	54,319	25,961	29,442
76	BOOKS, MAPS AND OTHER PUBLICATIONS	53,440	49,077	55,922	48,248
77	MUSICAL INST, PHONOGRAPHS, + HOME TYPE RADIOS	2,883	2,723	1,297	1,008
78	RECREATIONAL AND ATHLETIC EQUIPMENT	5,038	8,292	5,278	7,703
79	CLEANING EQUIPMENT AND SUPPLIES	46,893	54,167	30,627	26,294
80	BRUSHES, PAINTS, SEALERS AND ADHESIVES	18,248	13,472	4,930	5,720

**Table C. Summary of Supplies and Equipment
(Concluded)
(Amounts in Thousands)**

FSC CODE	DESCRIPTION	FISCAL YEAR			
		1981	1982	1983	1984
81	CONTAINERS, PACKAGING + PACKING SUPPLIES	100,870	120,821	131,137	154,064
83	TEX, LTHR, FURS, APPAREL + SHOE FIND, TENTS + FLAGS	242,850	211,015	223,524	200,476
84	CLOTHING AND INDIVIDUAL EQUIPMENT	628,611	813,551	882,291	799,055
85	TOILETRIES	33,725	35,589	26,936	32,170
87	AGRICULTURAL SUPPLIES	7,643	7,548	5,284	4,337
88	LIVE ANIMALS	268	289	41	587
89	SUBSISTENCE	1,833,975	1,767,753	1,228,678	1,239,641
91	FUELS, LUBRICANTS, OILS AND WAXES	12,937,310	10,578,878	9,366,648	8,933,100
93	NONMETALLIC FABRICATED MATERIALS	28,582	42,822	21,548	31,549
94	NONMETALLIC CRUDE MATERIALS	1,115	867	1,285	0
95	METAL BARS, SHEETS AND SHAPES	97,240	90,874	78,877	57,758
96	ORES, MINERALS AND THEIR PRIMARY PRODUCTS	10,777	14,815	3,084	9,218
99	MISCELLANEOUS	288,281	287,587	427,397	256,018
	TOTAL SUPPLIES AND EQUIPMENT	64,059,290	72,821,422	81,435,742	84,190,305
		*****	*****	*****	*****

Table C. Supplies and Equipment
(Amounts in Thousands)

FSC CODE	DESCRIPTION	FISCAL YEAR			
		1981	1982	1983	1984
10	WEAPONS				
1005	GUNS THROUGH 30 MM	457,830	659,965	571,666	446,673
1010	GUNS OVER 30 MM UP TO 75 MM	13,769	6,298	2,750	17,082
1015	GUNS 75 MM THROUGH 125 MM	95,078	63,943	213,416	155,116
1020	GUNS OVER 125 MM THROUGH 150 MM	41,340	12,299	15,166	3,467
1025	GUNS OVER 150 MM THROUGH 200 MM	56,737	111,943	24,609	92,117
1030	GUNS OVER 200 MM THROUGH 300 MM	2,700	147	42	-43
1035	GUNS OVER 300 MM	2,146	1,315	144	76
1040	CHEMICAL WEAPONS AND EQUIPMENT	7,604	3,575	3,635	8,967
1045	LAUNCHERS TORPEDO AND DEPTH CHARGE	5,139	4,247	1,663	4,010
1055	LAUNCHERS ROCKET AND PYROTECHNIC	13,046	26,306	40,346	46,432
1070	NETS AND BOOMS ORDNANCE	195	12	404	255
1075	DEGAUSSING AND MINE SWEEPING EQUIPMENT	4,046	6,344	14,471	9,366
1080	CAMOUFLAGE AND DECEPTION EQUIPMENT	46,464	42,933	107,913	161,242
1090	WPNS ASSY INTERCHANGE BETWN 2 OR MORE	5,950	7,963	11,999	6,147
1095	MISCELLANEOUS WEAPONS	236,559	501,314	476,776	220,574
	TOTAL	992,625	1,472,624	1,465,246	1,171,723
		*****	*****	*****	*****
11	NUCLEAR ORDNANCE				
1105	NUCLEAR BOMBS	2,173	1,656	9,916	3,933
1110	NUCLEAR PROJECTILES	1,403	1,369	5,000	0
1115	NUCLEAR WARHEADS AND WARHEAD SECTIONS	917	450	14,709	7,576
1127	NUCLEAR ROCKETS	300	341	641	0
1130	CONVERSION KITS, NUCLEAR ORDNANCE	20	0	0	0
1135	FUSING AND FIRING DEVICES NUCLEAR ORD	14,205	11,494	6,257	17,471
1140	NUCLEAR COMPONENTS	79,408	84,365	219	0
1145	NUCLEAR EXPLOSIVE AND PYROTECHNIC COMPS	0	0	1,667	0
1190	NUCLEAR TEST AND HANDLING EQUIPMENT	14,915	2,626	5,906	6,365
1195	MISCELLANEOUS NUCLEAR ORDNANCE	375	422	221	26
	TOTAL	113,716	103,125	46,556	35,373
		*****	*****	*****	*****
12	FIRE CONTROL EQUIPMENT				
1210	FIRE CONTROL DIRECTORS	973	1,790	1,494	21,506
1220	FIRE CONTROL COMPUTING SIGHTS & DEVICES	105,652	104,127	27,644	24,944
1230	FIRE CONTROL SYSTEMS COMPLETE	107,077	304,639	92,784	330,609
1240	OPTICAL SIGHTING AND RANGING EQUIPMENT	121,256	464,494	691,194	541,552
1250	FIRE CONTROL STABILIZING MECHANISMS	3,845	-1,102	4,611	14,656
1260	FIRE CNTL DESIGNATING - INDICATING EQUIP	96,841	105,165	131,116	123,216
1265	FIRE CONTROL EQUIPMENT EXCEPT AIRBORNE	43,291	58,900	56,162	108,785
1270	AIRCRAFT GUNNERY FIRE CONTROL COMPONENTS	241,614	125,913	166,615	217,961
1280	AIRCRAFT BOMBING FIRE CONTROL COMPONENTS	72,122	147,666	212,146	236,345
1285	FIRE CONTROL RADAR EQUIP EXCEPT AIRBORNE	75,664	239,457	92,643	194,243
1287	FIRE CONTROL SONAR EQUIPMENT	2,669	2,592	3,666	36,226
1290	MISCELLANEOUS FIRE CONTROL EQUIPMENT	32,644	46,420	51,915	49,113
	TOTAL	905,670	1,602,063	1,532,614	1,903,378
		*****	*****	*****	*****
13	AMMUNITION AND EXPLOSIVES				
1305	AMMUNITION THROUGH 30 MM	217,272	476,436	303,642	400,446
1310	AMMUNITION OVER 30 MM UP TO 75 MM	6,333	6,122	13,618	90,197
1315	AMMUNITION 75 MM THROUGH 125 MM	206,394	254,611	150,652	174,567
1320	AMMUNITION OVER 125 MM	320,559	514,426	301,934	466,222
1325	BOMBS	174,024	406,663	379,919	360,439
1330	GRENADES	21,369	25,962	114,446	160,211
1336	GUIDED MSL WARHEADS - EXPLOSIVE COMPS	33,235	167,505	32,690	20,932
1337	MSL AND SPACE VEH EXPLOSIVE PROPULSION	19,551	53,600	42,077	74,366
1338	MSL AND SPACE VEH INERT PROPULSION	5,964	9,396	2,594	6,176
1340	ROCKETS AND ROCKET AMMUNITION	75,557	205,630	107,767	66,611
1345	LAND MINES	17,546	33,667	67,734	76,524
1350	UNDERWATER MINE INERT COMPONENTS	9,076	24,121	24,364	10,949
1351	UNDERWATER MINE EXPLOSIVE COMPONENTS	77,892	5,971	102,309	120,796
1355	TORPEDO INERT COMPONENTS	75,643	131,167	244,443	226,605
1356	TORPEDO EXPLOSIVE COMPONENTS	54,409	132,416	98,914	94,650
1360	DEPTH CHARGE INERT COMPONENTS	-441	192	1,589	0
1361	DEPTH CHARGE EXPLOSIVE COMPONENTS	-33	400	666	424
1365	MILITARY CHEMICAL AGENTS	533	487	1,655	2,467
1370	PYROTECHNICS	20,409	45,566	16,561	41,394
1375	DEMOLITION MATERIALS	7,164	16,673	11,676	19,209
1376	BULK EXPLOSIVES	50,074	85,206	17,701	29,350
1377	CARTRIDGE & PROPELLANT ACTUATED DEVICES	52,357	93,767	102,539	62,576

**Table C. Supplies and Equipment
(Continued)
(Amounts in Thousands)**

FSC CODE	DESCRIPTION	FISCAL YEAR			
		1981	1982	1983	1984
13	AMMUNITION AND EXPLOSIVES				
1380	MILITARY BIOLOGICAL AGENTS	27	0	0	0
1385	EXPLOSIVE ORD DISPOSAL TOOLS - SURFACE	693	3,700	2,431	1,688
1388	EXPLOSIVE ORD DISPOSAL TOOL-UNDERWATER	321	4,089	1,380	218
1390	FUSES AND PRIMERS	189,927	247,230	181,081	173,093
1395	MISCELLANEOUS AMMUNITION	12,093	22,898	43,565	38,727
1398	AMMUNITION HANDLING AND SERVICING EQUIP	10,734	10,457	8,535	18,640
	TOTAL	1,658,906	3,001,064	2,378,708	2,801,919
14	GUIDED MISSILES				
1410	GUIDED MISSILES	1,319,590	1,214,649	1,020,580	1,462,864
1420	GUIDED MISSILE COMPONENTS	1,007,654	1,383,716	1,768,693	1,884,137
1425	GUIDED MISSILE SYSTEMS, COMPLETE	1,482,893	1,644,964	2,161,634	2,281,651
1427	GUIDED MISSILE SUBSYSTEMS	210,936	219,644	500,840	740,615
1430	GUIDED MISSILE REMOTE CONTROL SYSTEMS	491,653	431,642	464,333	713,914
1440	LAUNCHERS GUIDED MISSILE	291,661	695,505	462,274	561,243
1450	GUIDED MISSILE HANDLING SERVICING EQUIP	103,017	208,518	555,929	479,475
	TOTAL	4,907,804	5,798,838	6,934,083	7,903,699
15	AIRCRAFT + AIRFRAME STRUCTURAL COMPONENTS				
1510	AIRCRAFT FIXED WING	7,489,454	7,437,893	11,005,860	13,482,128
1520	AIRCRAFT ROTARY WING	710,961	1,771,311	2,008,982	2,387,523
1540	GLIDERS	21	971	0	288
1550	DRONES	31,750	70,921	44,514	11,922
1560	AIRFRAME STRUCTURAL COMPONENTS	1,138,870	1,664,033	1,993,014	2,157,667
	TOTAL	9,351,056	10,944,929	15,052,170	18,019,524
16	AIRCRAFT COMPONENTS AND ACCESSORIES				
1610	AIRCRAFT PROPELLERS	35,957	45,309	50,208	58,951
1615	HELICOPTER ROTOR BLADES-DRIVE MECHANISM	275,541	211,257	257,892	338,154
1620	AIRCRAFT LANDING GEAR COMPONENTS	93,297	210,792	120,294	148,036
1630	AIRCRAFT WHEEL AND BRAKE SYSTEMS	130,492	139,234	124,072	111,503
1650	AIRCRAFT HYDRAULIC VACUUM DE-ICING COMPS	191,654	228,935	349,974	282,835
1660	AIRCRAFT AIR CONDITIONING HEATING EQUIP	75,690	113,980	125,787	129,105
1670	PARACHUTES RECOVERY SYS AND TIE DOWN EQ	51,180	70,002	94,390	108,441
1680	MISCL AIRCRAFT ACCESSORIES COMPONENTS	521,928	383,433	1,645,727	1,024,208
	TOTAL	1,375,739	1,402,942	2,768,344	2,191,233
17	AIR FT LAUNCHING, LDG, + GND, HANDLING EQUIPMENT				
1710	AIRCRAFT ARRESTING BARRIER & EQUIPMENT	25,953	61,267	55,085	60,420
1720	AIRCRAFT LAUNCHING EQUIPMENT	33,948	43,833	33,300	76,497
1730	AIRCRAFT GROUND SERVICING EQUIPMENT	128,651	178,168	213,284	146,017
1740	AIR FIELD SPECIALIZED TRUCKS AND TRAILERS	14,800	68,259	44,982	41,329
	TOTAL	203,352	349,327	346,611	314,263
18	SPACE VEHICLES				
1810	SPACE VEHICLES	223,312	141,871	491,439	430,898
1820	SPACE VEHICLE COMPONENTS	187,500	573,794	432,999	464,675
1830	SPACE VEHICLE REMOTE CONTROL SYSTEMS	4,698	7,767	5,090	224
1840	SPACE VEHICLE LAUNCHERS	19,846	2,894	28,300	109
1850	SPACE VEHICLE HANDLING & SERVICING EQUIP	22,737	27,237	8,191	8,325
1860	SPACE SURVIVAL EQUIPMENT	0	0	0	0
	TOTAL	458,093	753,363	964,019	904,231
19	SHIPS, SMALL CFT, PONTOONS + FLOATING DOCKS				
1900	FRIGATES AND CORVETTES	729,866	605,943	495,735	181,771
1901	AIRCRAFT CARRIERS	132,645	81,121	3,212,540	72,067
1902	CRUISERS	745,262	338,275	1,057,067	985,294
1903	DESTROYERS	33,017	-12,098	47,885	-19,728
1904	SUBMARINES	1,588,475	2,665,574	1,426,126	1,688,723

**Table C. Supplies and Equipment
(Continued)
(Amounts in Thousands)**

FSC CODE	DESCRIPTION	FISCAL YEAR			
		1981	1982	1983	1984
19	SHIPS, SMALL CFT, PONTOONS + FLOATING DOCKS				
1905	SUBCHASERS	110,952	118,717	26,628	44,662
1906	MINELAYERS AND MINESWEEPERS	0	64,448	46,515	130,785
1907	LANDING CRAFT	38,525	79,078	49,201	159,120
1908	TORPEDO BOATS AND GUN BOATS	32,085	4,763	2,108	2,094
1909	HYDROFOILS	57,734	38,678	32,610	2,553
1910	TRANSPORT VESSELS - PASSENGER AND TROOP	4,371	308	1,265	1,767
1911	AMPHIBIOUS ASSAULT SHIPS	334,964	305,250	321,285	1,094,098
1915	CARGO AND TANKER VESSELS	219,447	96,409	253,476	242,094
1920	FISHING VESSELS	0	1,202	73	242
1921	TUGS AND TOWBOATS	20,495	3,640	447	2,767
1924	REPAIR SHIPS	23,444	0	10,607	4,644
1925	TENDER VESSELS	27,666	32,454	32,622	12,372
1927	CABLE SHIPS	NA	NA	NA	3,510
1928	SALVAGE VESSELS	54,511	69,662	33,960	1,820
1929	RESCUE VESSELS	11	0	91	0
1930	BARGES AND LIGHTERS CARGO	5,269	27,478	55,138	9,060
1935	BARGES AND LIGHTERS SPECIAL PURPOSE	69,337	29,259	15,562	4,957
1940	SMALL CRAFT	7,519	27,287	49,146	65,354
1945	PONTOONS AND FLOATING DOCKS	254	8,634	8,673	31,069
1950	FLOATING DRYDOCKS	45	380	32,699	1,858
1955	DREDGES	18,372	8,477	17,123	4,694
1990	MISCELLANEOUS VESSELS	3,314	3,048	239,658	75,141
	TOTAL	4,257,580	4,592,601	7,469,428	4,619,410
20	SHIP AND MARINE EQUIPMENT				
2010	SHIP AND BOAT PROPULSION COMPONENTS	24,944	67,647	66,308	159,856
2020	RIGGING AND RIGGING GEAR	3,671	2,537	1,891	1,140
2030	DECK MACHINERY	6,695	14,850	5,064	5,680
2040	MARINE HARDWARE AND HULL ITEMS	17,967	74,425	103,527	14,010
2050	BUOYS	1,065	653	626	568
2060	COMMERCIAL FISHING EQUIPMENT	NA	15	0	0
2090	MISCELLANEOUS SHIP AND MARINE EQUIPMENT	35,653	37,653	33,858	43,962
	TOTAL	90,195	197,980	211,296	225,416
22	RAILWAY EQUIPMENT				
2210	LOCOMOTIVES	62	130	0	60
2220	RAIL CARS	7,908	14,060	125	14,642
2230	RAILROAD RIGHT OF WAY CONSTR EQUIP	659	62	37	1,048
2240	LOCOMOTIVE & RAIL CAR ACCESSORIES & COMP	111	218	273	0
2250	TRACK MATERIALS RAILROAD	592	724	681	309
	TOTAL	9,332	15,194	1,296	16,259
23	MOTOR VEHICLES, TRAILERS, AND CYCLES				
2305	GROUND EFFECT VEHICLES	1,558	2,426	2,244	3,132
2310	PASSENGER MOTOR VEHICLES	26,922	11,589	19,150	36,163
2320	TRUCKS AND TRUCK TRACTORS WHEELED	608,995	630,426	1,214,651	1,519,770
2330	TRAILERS	87,354	185,096	97,236	95,900
2340	MOTORCYCLES, MOTOR SCOOTERS AND BICYCLES	1,693	1,216	359	8,458
2350	COMBAT ASSAULT & TACTICAL VEH - TRACKED	1,288,709	1,460,636	1,568,196	1,553,801
	TOTAL	2,015,231	2,491,289	2,922,036	3,217,224
24	TRACTORS				
2410	TRACTORS FULL TRACK LOW SPEED	18,645	3,461	35,554	9,407
2420	TRACTORS WHEELED	5,066	12,622	14,465	11,242
2430	TRACTORS TRACK LAYING HIGH SPEED	7,469	737	1,035	-96
	TOTAL	31,180	17,020	51,054	20,553
25	VEHICULAR EQUIPMENT COMPONENTS				
2510	VEHICULAR CAB BODY FRAME STRUCTURAL COMP	33,726	55,762	30,789	72,769
2520	VEHICULAR POWER TRANSMISSION COMPONENTS	270,276	364,128	426,679	432,646
2530	VEHICULAR BRAKE STEERING AXLE WHEEL COMP	490,461	807,168	518,108	438,484
2540	VEHICULAR FURNITURE AND ACCESSORIES	39,760	65,671	64,290	60,291

**Table C. Supplies and Equipment
(Continued)
(Amounts in Thousands)**

FSC CODE	DESCRIPTION	FISCAL YEAR			
		1981	1982	1983	1984
25	VEHICULAR EQUIPMENT COMPONENTS				
2590	MISCELLANEOUS VEHICULAR COMPONENTS	43,393	64,538	72,252	30,414
	TOTAL	877,656	1,357,487	1,132,319	1,034,804
26	TIRES AND TUBES				
2610	TIRES & TUBES PNEUMATIC EXCEPT AIRCRAFT	38,669	57,450	50,557	52,375
2620	TIRES AND TUBES PNEUMATIC AIRCRAFT	35,179	40,281	38,835	38,203
2630	TIRES SOLID AND CUSHION	538	297	201	272
2640	TIRE REBUILDING - TIRE & TUBE REPAIR MTL	3,731	2,580	2,387	1,895
	TOTAL	78,115	100,588	91,980	90,745
28	ENGINES, TURBINES, AND COMPONENTS				
2805	GAS RECIPROCATING ENG - EXCEPT AIRCRAFT	28,478	45,722	48,781	109,191
2810	GAS RECIPROCATING ENG - AIRCRAFT & COMPS	7,007	18,351	125,833	2,026
2815	DIESEL ENGINES AND COMPONENTS	300,532	397,107	388,439	277,985
2820	STEAM ENGINES RECIPROCATING & COMPONENTS	554	1,931	1,114	288
2825	STEAM TURBINES AND COMPONENTS	69,695	94,294	57,084	52,496
2830	WATER TURBINES - WATER WHEELS & COMPS	4,788	1,220	1,112	2,532
2835	GAS TURBINES AND JET ENG EXCEPT AIRCRAFT	406,020	516,712	510,120	873,502
2840	GAS TURBINES AND JET ENGINES AIRCRAFT	4,189,567	4,253,107	4,031,900	4,536,580
2845	ROCKET ENGINES AND COMPONENTS	7,450	77,090	4,213	4,196
2850	GASOLINE ROTORY ENGINES & COMPONENTS	595	244	0	0
2895	MISCELLANEOUS ENGINES AND COMPONENTS	6,831	8,350	5,828	7,864
	TOTAL	5,021,497	5,414,128	5,172,324	5,666,660
29	ENGINE ACCESSORIES				
2910	ENGINE FUEL SYS COMPONENTS NONAIRCRAFT	30,853	46,851	54,316	54,588
2915	ENGINE FUEL SYSTEM COMPONENTS AIRCRAFT	203,848	238,906	208,454	210,650
2920	ENGINE ELECTRICAL SYS COMPS NONAIRCRAFT	45,091	58,259	54,930	43,010
2925	ENGINE ELECTRICAL SYS COMPS - AIRCRAFT	23,898	20,872	37,909	41,964
2930	ENGINE COOLING SYS COMPS - NONAIRCRAFT	14,428	24,068	28,264	14,671
2935	ENGINE COOLING SYS COMPONENTS - AIRCRAFT	6,044	12,214	9,519	8,624
2940	ENGINE AIR & OIL FILTERS - NONAIRCRAFT	11,262	18,755	11,937	18,767
2945	ENGINE AIR & OIL FILTERS - AIRCRAFT	7,536	3,852	4,245	3,410
2950	TURBOSUPERCHARGERS	107,690	4,474	4,474	9,746
2990	MISC ENGINE ACCESSORIES - NONAIRCRAFT	14,740	21,188	23,903	11,355
2995	MISC ENGINE ACCESSORIES - AIRCRAFT	75,616	80,362	75,820	87,677
	TOTAL	541,004	529,401	513,771	504,462
30	MECHANICAL POWER TRANSMISSION EQUIPMENT				
3010	TORQUE CONVERTERS AND SPEED CHANGERS	11,888	9,362	17,809	7,842
3020	GEARS PULLEYS SPROCKETS AND TRANS CHAIN	43,282	35,400	48,211	31,546
3030	BLFING DRIVE BELTS FAN BELTS & ACCESS	1,203	1,445	814	369
3040	MISCELLANEOUS POWER TRANSMISSION EQUIP	31,127	41,849	44,181	30,835
	TOTAL	87,500	87,856	110,795	70,592
31	BEARINGS				
3110	BEARINGS ANTI-FRICTION UNMOUNTED	67,121	81,898	50,923	77,700
3120	BEARINGS PLAIN UNMOUNTED	25,420	31,807	25,115	17,874
3130	BEARINGS MOUNTED	4,194	2,556	2,306	970
	TOTAL	96,735	116,261	78,344	96,544
32	WOODWORKING MACHINERY AND EQUIPMENT				
3210	SAWMILL AND PLANING MILL MACHINERY	82	734	0	71
3220	WOODWORKING MACHINES	1,689	2,658	853	1,414
3230	TOOLS - ATTACHMENTS FOR WOODWORKING MACH	240	49	109	0
	TOTAL	2,011	3,441	962	1,485

**Table C. Supplies and Equipment
(Continued)
(Amounts in Thousands)**

FSC CODE	DESCRIPTION	FISCAL YEAR			
		1981	1982	1983	1984
34	METALWORKING MACHINERY				
3405	SAWS AND FILING MACHINES	2,142	2,339	2,055	2,649
3408	MACHING CENTERS AND WAY-TYPE MACHINES	4,156	10,035	14,981	22,485
3410	ELECTRICAL & ULTRASONIC EROSION MACHINES	382	801	1,189	1,320
3411	BORING MACHINES	3,414	7,741	4,527	8,249
3412	BROACHING MACHINES	839	12	5,000	8,675
3413	DRILLING AND TAPPING MACHINES	1,372	8,556	2,247	8,309
3414	GEAR CUTTING AND FINISHING MACHINES	163	151	661	269
3415	GRINDING MACHINES	17,681	7,338	8,836	14,682
3418	LATHES	23,645	15,003	22,220	27,241
3417	MILLING MACHINES	12,248	9,805	11,983	10,372
3418	PLANERS AND SHAPERS	400	908	123	242
3419	MISCELLANEOUS MACHINE TOOLS	27,594	4,418	5,799	8,755
3422	ROLLING MILLS AND DRAWING MACHINES	137	19	0	241
3424	METAL HEAT TREATING EQUIPMENT	2,774	4,429	2,612	3,543
3428	METAL FINISHING EQUIPMENT	4,918	1,680	4,428	984
3431	ELECTRIC ARC WELDING EQUIPMENT	4,443	4,077	7,849	8,599
3432	ELECTRIC RESISTANCE WELDING EQUIPMENT	136	410	2,228	252
3433	GAS WELDING HEAT CUTTING - METALIZING EQ	2,883	3,045	2,559	2,085
3436	WELDING POSITIONERS AND MANIPULATORS	172	81	2,427	1,840
3438	MISCELLANEOUS WELDING EQUIPMENT	338	1,007	1,086	3,554
3439	MISC WELDING SOLDERING & BRAZING SUPPLY	12,882	9,985	8,285	6,000
3441	BENDING AND FORMING MACHINES	2,524	8,338	4,022	3,548
3442	HYDRAULIC AND PNEUMATIC PRESSES POWER DR	2,102	1,938	1,931	8,117
3443	MECHANICAL PRESSES POWER DRIVEN	755	761	1,213	356
3444	MANUAL PRESSES	430	476	474	2,400
3445	PUNCHING AND SHEARING MACHINES	4,342	3,853	3,288	3,617
3446	FORGING MACHINERY AND HAMMERS	398	1,041	2,816	1,479
3447	WIRE AND METAL RIBBON FORMING MACHINES	474	42	80	119
3448	RIVETING MACHINES	151	220	46	54
3449	MISC SECONDARY METAL FORMING CUTTING MACH	128,576	-48,489	-45,108	192
3450	MACHINE TOOLS PORTABLE	392	876	395	356
3455	CUTTING TOOLS FOR MACHINE TOOLS	1,775	2,072	991	890
3456	CUTTING TOOLS FOR SECONDARY METAL MACH	599	700	46	101
3460	MACHINE TOOL ACCESSORIES	1,899	2,054	3,181	2,576
3461	ACCESSORIES -SECONDARY METALWORKING MACH	85	92	376	34
3465	PRODUCTION JIGS FIXTURES AND TEMPLATES	4,277	82	50	140
3470	MACHINE SHOP SETS KITS AND OUTFITS	75	263	355	1,252
	TOTAL	271,552	62,735	77,971	151,537
35	SERVICE AND TRADE EQUIPMENT				
3510	LAUNDRY AND DRY CLEANING EQUIPMENT	5,264	8,301	4,411	10,087
3520	SHOE REPAIRING EQUIPMENT	49	114	0	0
3530	IND SEWING MACH & MOBILE TEXTILE SHOPS	2,940	2,185	263	312
3540	WRAPPING AND PACKAGING MACHINERY	1,774	2,499	1,597	2,873
3550	VENDING AND COIN OPERATED MACHINES	82	0	73	30
3590	MISC SERVICE AND TRADE EQUIPMENT	923	2,048	1,220	8,612
	TOTAL	11,012	18,147	7,564	22,894
36	SPECIAL INDUSTRY MACHINERY				
3605	FOOD PRODUCTS MACHINERY AND EQUIPMENT	2,255	852	1,652	1,112
3610	PRINTING DUPLICATING & BOOKBINDING EQUIP	32,213	33,883	27,527	27,149
3611	INDUSTRIAL MARKING MACHINES	231	837	306	190
3615	PULP AND PAPER INDUSTRIES MACHINERY	924	1,823	1,631	1,129
3620	RUBBER & PLASTIC WORKING MACHINERY	358	388	1,034	1,267
3625	TEXTILE INDUSTRIES MACHINERY	470	53	944	139
3630	CLAY/CONCRETE PRODUCTS INDUSTRIES MACH	87	35	60	319
3635	CRYSTAL & GLASS INDUSTRIES MACHINERY	428	268	180	191
3640	TOBACCO MANUFACTURING MACHINERY	24	53	0	0
3645	LEATHER TANNING AND WORKING MACHINERY	NA	NA	NA	33
3650	CHEMICAL AND PHARMACEUTICAL MACHINERY	203	534	550	2,045
3655	GAS GENERATING AND DISPENSING SYSTEM	27,472	31,737	41,003	28,853
3660	INDUSTRIAL SIZE REDUCTION MACHINERY	168	216	12,112	8,014
3670	PRINTED CIRCUIT BOARD MFG MACH	563	3,850	384	1,797
3680	FOUNDRY MACHINERY - RELATED EQUIP & SUP	1,154	6,313	2,349	680
3685	SPECIALIZED METAL CONTAINER MFG MACH	28	34	0	86
3690	SPECIALIZED AMMUNITION AND ORDNANCE MACH	5,496	25,479	58,248	9,826
3693	INDUSTRIAL ASSEMBLY MACHINES	200	385	199	421
3694	CLEAN WORK STATIONS ENVIRONMENT EQUIP	622	908	436	851
3695	MISCELLANEOUS SPECIAL INDUSTRY MACHINERY	4,599	9,914	10,418	13,333
	TOTAL	77,319	118,972	158,980	95,115

**Table C. Supplies and Equipment
(Continued)
(Amounts in Thousands)**

FSC CODE	DESCRIPTION	FISCAL YEAR			
		1981	1982	1983	1984
37	AGRICULTURAL MACHINERY AND EQUIPMENT				
3710	SOIL PREPARATION EQUIPMENT	164	158	166	112
3720	HARVESTING EQUIPMENT	31	129	44	66
3730	DAIRY POULTRY AND LIVESTOCK EQUIPMENT	0	26	36	0
3740	PEST DISEASE AND FROST CONTROL EQUIPMENT	259	436	929	1,139
3750	GARDENING IMPLEMENTS AND TOOLS	3,310	3,441	2,347	1,116
3760	ANIMAL DRAWN VEHICLES AND FARM TRAILERS	99	0	360	123
3770	SADDLERY HARNESS WHIPS AND FURNISHINGS	202	307	136	334
	TOTAL	4,065	4,496	4,036	2,912
38	CONST. MINING, EXCAVATING + HWY MAINTENANCE EQUIP				
3805	EARTH MOVING AND EXCAVATING EQUIPMENT	6,323	41,930	212,926	163,307
3810	CRANES AND CRANE-SHOVELS	14,046	29,424	24,926	23,152
3815	CRANE AND CRANE-SHOVEL ATTACHMENTS	1,070	1,560	315	1,415
3820	MINING ROCK DRILLING EARTH BORING EQUIP	4,632	7,154	2,967	2,667
3825	ROAD CLEARING AND CLEANING EQUIPMENT	4,761	13,049	16,967	14,832
3830	TRUCK AND TRACTOR ATTACHMENTS	2,315	1,499	829	615
3835	PETROLEUM PRODUCTION-DISTRIBUTION EQUIP	160	3,657	1,054	9,047
3895	MISCELLANEOUS CONSTRUCTION EQUIPMENT	5,609	17,740	39,186	10,717
	TOTAL	39,155	115,913	301,172	245,972
39	MATERIALS HANDLING EQUIPMENT				
3910	CONVEYORS	4,062	17,021	26,372	17,017
3915	MATERIALS FEEDERS	66	240	2,233	416
3920	MAT HANDLING EQUIP - NONSELF-PROPELLED	4,754	11,311	7,966	8,692
3930	WAREHOUSE TRKS & TRACTORS SELF-PROPELLED	109,435	162,085	128,026	114,592
3940	BLOCKS TACKLE RIGGING AND SLINGS	3,192	4,500	2,923	3,465
3950	WINCHES HOISTS CRANES AND DERRICKS	26,689	34,422	26,576	29,625
3960	ELEVATORS AND ESCALATORS	566	667	666	2,310
3990	MISCELLANEOUS MATERIALS HANDLING EQUIP	62,527	46,964	44,307	37,013
	TOTAL	213,333	279,250	241,095	213,351
40	ROPE, CABLE, CHAIN AND FITTINGS				
4010	CHAIN AND WIRE ROPE	19,607	17,479	11,606	20,361
4020	FIBER ROPE CORDAGE AND TWINE	16,592	12,950	13,460	9,064
4030	FITTINGS FOR ROPE CABLE AND CHAIN	2,666	4,966	3,527	2,192
	TOTAL	39,267	35,417	28,593	31,617
41	REFRIGERATION + AIR CONDITIONING EQUIPMENT				
4110	REFRIGERATION EQUIP	26,735	33,469	30,692	31,292
4120	AIR CONDITIONING EQUIP	46,276	61,939	42,331	52,414
4130	REFRIGERATION AND AIR CONDITIONING COMP	24,996	29,980	16,612	15,376
4140	FANS AIR CIRCULATORS & BLOWER EQUIP	19,106	26,401	24,771	26,336
	TOTAL	121,117	154,809	114,406	126,417
42	FIRE FIGHTING, RESCUE + SAFETY EQUIPMENT				
4210	FIRE FIGHTING EQUIPMENT	53,500	66,128	60,009	76,441
4220	MARINE LIFESAVING AND DIVING EQUIPMENT	16,805	26,620	19,625	24,078
4230	DECONTAMINATING AND IMPREGNATING EQUIP	13,259	11,510	14,313	30,626
4240	SAFETY AND RESCUE EQUIPMENT	134,559	163,562	124,476	199,464
	TOTAL	220,123	268,040	218,423	330,611
43	PUMPS AND COMPRESSORS				
4310	COMPRESSORS AND VACUUM PUMPS	46,813	69,167	63,217	61,127
4320	POWER AND HAND PUMPS	101,566	123,026	116,163	152,126
4330	CENTRIFUGALS SEPARATORS AND FILTERS	17,119	17,656	14,062	16,796
	TOTAL	167,520	209,773	193,462	229,013

**Table C. Supplies and Equipment
(Continued)
(Amounts in Thousands)**

FSC CODE	DESCRIPTION	FISCAL YEAR			
		1981	1982	1983	1984
44	FURNACE, STEAM PLANT, DRYING EQUIP + NUCL REACTORS				
4410	INDUSTRIAL BOILERS	18,366	23,807	14,881	11,713
4420	HEAT EXCHANGERS AND STEAM CONDENSERS	5,803	4,981	7,789	32,876
4430	INDUSTRIAL FURNACES KILNS LEHR'S & OVENS	3,074	2,322	5,429	4,393
4440	DRIERS DEHYDRATORS AND ANHYDRATORS	3,352	2,741	3,227	5,025
4460	AIR PURIFICATION EQUIPMENT	3,786	7,826	3,138	4,940
4470	NUCLEAR REACTORS	289,423	1,292,684	1,598,113	756,729
	TOTAL	321,676	1,334,541	1,633,677	815,776
45	PLUMBING, HEATING + SANITATION EQUIPMENT				
4510	PLUMBING FIXTURES AND ACCESSORIES	5,491	7,833	4,700	10,449
4520	SPACE HEATING EQUIP AND WATER HEATERS	14,282	22,731	18,358	10,485
4530	FUEL BURNING EQUIPMENT UNITS	3,348	4,044	5,123	3,739
4540	MISC PLUMBING HEATING & SANITATION EQUIP	6,030	6,094	3,564	4,983
	TOTAL	31,129	40,602	29,745	29,656
46	WATER PURIFICATION + SEWAGE TREATMENT EQUIPMENT				
4610	WATER PURIFICATION EQUIPMENT	24,813	58,300	8,552	31,860
4620	WATER DISTILLATION EQUIP MARINE & INDUST	2,357	2,066	1,738	4,364
4630	SEWAGE TREATMENT EQUIPMENT	478	1,480	705	1,209
	TOTAL	27,648	59,846	10,995	37,433
47	PIPE, TUBING, HOSE + FITTINGS				
4710	PIPE AND TUBE	33,410	58,891	27,881	35,429
4720	HOSE AND TUBING FLEXIBLE	43,943	65,317	38,705	37,204
4730	FITTINGS - HOSE PIPE & TUBE	44,628	58,807	29,002	30,793
	TOTAL	121,981	182,815	95,388	103,426
48	VALVES				
4810	VALVES POWERED	37,123	47,411	45,524	40,455
4820	VALVES NONPOWERED	99,066	127,918	80,598	104,998
	TOTAL	136,189	175,329	126,122	145,453
49	MAINTENANCE + REPAIR SHOP EQUIPMENT				
4910	MOTOR VEHICLE MAINTENANCE EQUIPMENT	53,558	57,706	45,164	37,893
4920	AIRCRAFT MAINTENANCE & REPAIR SHOP EQUIP	281,381	378,840	473,954	521,251
4921	TORPEDO MAINT REPAIR & CHECKOUT EQUIP	2,128	835	440	5,078
4923	DEPTH CHARGES-MINES MAINT & REPAIR EQUIP	70	132	122	820
4925	AMMUNITION MAINTENANCE - CHECKOUT EQUIP	2,848	5,207	1,848	5,807
4927	ROCKET MAINTENANCE AND REPAIR EQUIPMENT	12	442	3,057	17,443
4930	LUBRICATION & FUEL DISPENSING EQUIPMENT	17,935	40,095	22,249	30,581
4931	FIRE CONTROL MAINTENANCE EQUIPMENT	34,447	20,883	28,877	29,384
4933	WEAPONS MAINTENANCE EQUIPMENT	3,782	15,640	7,825	1,399
4935	GUIDED MISSILE MAINTENANCE EQUIPMENT	97,552	73,489	70,808	81,274
4940	MISCELLANEOUS MAINTENANCE EQUIPMENT	87,603	38,484	21,389	48,731
4960	SPACE VEHICLE MAINTENANCE EQUIPMENT	178	3,528	172	183
	TOTAL	541,442	631,239	675,886	788,654
51	HAND TOOLS				
5110	HAND TOOLS EDGED NONPOWERED	801	1,006	283	31
5120	HAND TOOLS NONEDGED NONPOWERED	6,923	10,860	5,511	14,371
5130	HAND TOOLS POWER DRIVEN	2,980	4,874	1,641	1,162
5133	DRILL BITS COUNTERBORERS AND COUNTERSINKS	141	804	148	0
5136	TAPS DIES AND COLLETS HAND AND MACHINE	182	218	82	0
5140	TOOL AND HARDWARE BOXES	1,494	1,138	2,320	718
5180	SETS KITS AND OUTFITS OF HAND TOOLS	5,793	6,945	10,152	3,631
	TOTAL	18,114	28,843	20,318	19,813

**Table C. Supplies and Equipment
(Continued)
(Amounts in Thousands)**

FSC CODE	DESCRIPTION	FISCAL YEAR			
		1981	1982	1983	1984
52	MEASURING TOOLS				
5210	MEASURING TOOLS CRAFTSMEN	936	1,339	835	1,183
5220	INSPECTION GAGES & PRECISION LAYOUT TOOL	5,569	2,864	3,105	1,580
5280	SETS KITS AND OUTFITS OF MEASURING TOOLS	366	585	1,622	375
	TOTAL	6,871	4,788	5,562	3,138
53	HARDWARE AND ABRASIVES				
5305	SCREWS	6,207	7,900	4,765	4,516
5306	BOLTS	11,916	11,949	6,651	7,329
5307	STUDS	2,142	2,130	983	1,584
5310	NUTS AND WASHERS	22,574	26,791	14,345	15,256
5318	NAILS KEYS AND PINS	2,669	22,204	1,728	1,728
5320	RIVETS	11,606	9,738	7,662	8,903
5325	FASTENING DEVICES	3,509	5,630	2,224	3,843
5330	PACKING AND GASKET MATERIALS	19,055	30,464	20,553	26,076
5335	METAL SCREENING	242	207	289	493
5340	MISCELLANEOUS HARDWARE	35,761	44,913	34,805	24,166
5345	DISKS AND STONES ABRASIVE	91	204	160	204
5350	ABRASIVE MATERIALS	966	3,182	2,106	1,926
5355	KNOBS AND POINTERS	465	752	72	306
5360	COIL, FLAT AND WIRE SPRINGS	1,632	6,923	1,626	2,219
5365	RINGS SHIMS AND SPACERS	3,654	6,196	4,124	3,846
	TOTAL	124,693	179,163	104,694	102,419
54	PREFABRICATED STRUCTURES + SCAFFOLDING				
5410	PREFABRICATED AND PORTABLE BUILDINGS	30,570	41,490	55,318	63,633
5411	RIGID WALL SHELTERS	7,039	18,240	11,673	51,375
5420	BRIDGES FIXED AND FLOATING	44,357	56,956	44,045	20,123
5430	STORAGE TANKS	13,159	32,323	22,351	20,995
5440	SCAFFOLDING EQUIPMENT AND CONCRETE FORMS	1,500	1,654	1,795	2,815
5445	PREFABRICATED TOWER STRUCTURES	915	1,146	1,638	1,261
5450	MISCELLANEOUS PREFABRICATED STRUCTURES	5,429	7,429	7,605	22,055
	TOTAL	102,969	159,248	144,625	202,267
55	LUMBER, MILLWORK, PLYWOOD + VENEER				
5510	LUMBER AND RELATED BASIC WOOD MATERIALS	25,065	21,477	16,569	22,370
5520	MILLWORK	509	401	179	164
5530	PLYWOOD AND VENEER	6,517	5,620	4,759	6,163
	TOTAL	34,091	27,698	21,527	28,737
56	CONSTRUCTION + BUILDING MATERIALS				
5610	MINERAL CONSTRUCTION MATERIALS BULK	42,277	49,261	30,802	13,156
5620	BUILDING GLASS TILE BRICK AND BLOCK	2,023	4,195	7,601	10,776
5630	PIPE AND CONDUIT NONMETALLIC	408	168	4,706	87
5640	WALLBOARD BLDG & THERMAL INSULATION MAT	1,916	5,275	4,318	566
5650	ROOFING AND SIDING MATERIALS	756	1,056	453	410
5660	FENCING FENCES AND GATES	3,499	3,660	10,979	8,189
5670	ARCHITECTURAL AND RELATED METAL PRODUCTS	1,219	2,262	769	712
5680	MISCELLANEOUS CONSTRUCTION MATERIALS	20,462	12,776	14,475	10,489
	TOTAL	72,560	76,693	74,323	44,487
58	COMMUNICATION EQUIPMENT				
5805	TELEPHONE AND TELEGRAPH EQUIPMENT	77,402	120,081	204,943	137,980
5810	COMMUNICATIONS SECURITY EQUIP AND COMPS	210,903	337,217	376,567	234,113
5811	OTHER CRYPTOLOGIC EQUIPMENT & COMPONENTS	7,743	14,417	29,188	47,470
5815	TELETYPE AND FACSIMILE EQUIPMENT	98,211	91,882	87,993	155,384
5820	RADIO TV EQUIPMENT EXCEPT AIRBORNE	565,123	1,024,657	671,667	904,850
5821	RADIO AND TV EQUIPMENT AIRBORNE	149,297	293,516	334,754	286,501
5825	RADIO NAVIGATION EQUIP - EXCEPT AIRBORNE	102,597	114,014	120,661	145,735
5826	RADIO NAVIGATION EQUIPMENT AIRBORNE	209,126	205,323	235,591	209,327
5830	INTERCOMM PUBLIC ADDRESS SYS EX AIRBORNE	19,649	20,988	32,049	41,287
5831	INTERCOMM PUBLIC ADDRESS SYS - AIRBORNE	12,209	8,377	10,458	21,051
5835	SOUND RECORDING & REPRODUCING EQUIPMENT	37,214	47,488	67,594	66,746

**Table C. Supplies and Equipment
(Continued)
(Amounts in Thousands)**

FSC CODE	DESCRIPTION	FISCAL YEAR			
		1981	1982	1983	1984
58	COMMUNICATION EQUIPMENT				
5838	VIDEO RECORDING AND REPRODUCING EQUIPMENT	NA	NA	NA	1,344
5840	RADAR EQUIPMENT EXCEPT AIRBORNE	647,071	607,291	604,662	729,139
5841	RADAR EQUIPMENT AIRBORNE	928,018	1,134,739	1,147,100	1,094,923
5845	UNDERWATER SOUND EQUIPMENT	760,411	561,080	634,678	691,113
5850	VISIBLE INVISIBLE LIGHT COMMUN EQUIPMENT	16,148	13,355	6,638	2,152
5855	NIGHT VISION EQUIPMENT	372,575	196,445	185,168	153,686
5860	STIMULATED COHERENT RADIATION DEVICES	34,298	33,165	25,339	26,452
5865	ELECT COUNTERMEASURES & QUICK REACT EQUIP	1,564,287	1,824,274	2,354,994	3,625,612
5895	MISCELLANEOUS COMMUNICATION EQUIPMENT	784,661	997,391	1,075,963	1,316,067
	TOTAL	6,617,345	7,645,598	6,605,627	10,080,042
59	ELECTRICAL + ELECTRONIC EQUIPMENT COMPONENTS				
5905	RESISTORS	6,225	14,936	9,506	4,751
5910	CAPACITORS	7,440	8,379	4,934	6,064
5915	FILTERS AND NETWORKS	19,379	28,611	12,221	16,007
5920	FUSES AND LIGHTNING ARRESTERS	5,066	6,996	3,670	4,027
5925	CIRCUIT BREAKERS	12,370	13,661	22,763	14,721
5930	SWITCHES	40,813	53,032	35,661	33,774
5935	CONNECTORS ELECTRICAL	39,370	48,667	26,378	36,071
5940	LUGS TERMINALS AND TERMINAL STRIPS	7,529	11,129	6,518	7,605
5945	RELAYS AND SOLENOIDS	36,742	36,664	29,797	23,990
5950	COILS AND TRANSFORMERS	21,669	35,365	15,220	6,356
5955	PIEZOELECTRIC CRYSTALS	3,672	4,446	2,462	4,652
5960	ELECTRON TUBES & ASSOC HARDWARE	218,021	283,335	232,667	243,542
5961	SEMI CONDUCTOR DEVICES & ASSOC HARDWARE	14,796	18,749	10,000	11,556
5962	MICROCIRCUITS - ELECTRONIC	32,414	41,022	30,516	28,995
5963	ELECTRONIC MODULES	121,566	125,733	168,211	132,904
5965	HEADSETS HANDSETS MICROPHONES & SPEAKERS	22,569	31,411	27,018	22,148
5970	ELECTRICAL INSULATORS AND INSULATING MAT	4,072	4,999	2,895	3,637
5975	ELECTRICAL HARDWARE AND SUPPLIES	11,651	21,132	45,965	42,966
5977	ELECTRICAL CONTACT BRUSHES & ELECTRODES	3,630	4,462	2,374	7,137
5965	ANTENNAS WAVEGUIDES & RELATED EQUIPMENT	69,665	105,497	139,571	140,780
5990	SYNCHROS AND RESOLVERS	11,667	16,642	11,463	9,163
5995	CABLE CORD WIRE ASSEMBLIES - COMM EQUIP	42,017	97,462	72,662	90,793
5999	MISC ELECTRICAL AND ELECTRONIC COMPONENTS	518,754	560,226	799,263	1,094,335
	TOTAL	1,293,468	1,591,190	1,710,663	1,968,676
60	FIBER OPTICS MATS, COMPONENTS, ASSEMBLIES & ACCESSO				
6010	FIBER OPTIC CONDUCTORS	2,261	202	665	309
6015	FIBER OPTIC CABLES	1,011	260	730	1,760
6020	FIBER OPTIC DEVICES	376	152	476	2,185
6030	FIBER OPTIC DEVICES	160	259	4,113	6,676
6060	FIBER OPTIC INTERCONNECTORS	130	1,235	71	0
6070	FIBER OPTIC ACCESSORIES AND SUPPLIES	60	160	167	1,698
6080	FIBER OPTIC KITS & SETS	57	259	166	321
	TOTAL	4,075	2,547	6,599	15,149
61	ELECTRIC WIRE, + POWER + DISTRIBUTION EQUIPMENT				
6105	MOTORS ELECTRICAL	44,436	53,962	44,606	39,742
6110	ELECTRICAL CONTROL EQUIPMENT	45,253	59,666	66,629	69,990
6115	GENERATORS AND GENERATOR SETS ELECTRICAL	234,030	233,664	264,911	276,265
6118	FUEL CELL POWER UNITS AND COMP	94	42	166	183
6120	TRANSFORMERS - DISTRIBUTION & POWER STA	10,461	7,215	6,233	7,771
6125	CONVERTERS ELECTRICAL ROTATING	18,761	14,055	14,214	33,253
6130	CONVERTERS ELECTRICAL NON ROTATING	43,641	47,604	37,361	46,460
6135	BATTERIES PRIMARY	64,260	56,047	62,807	91,576
6140	BATTERIES SECONDARY	57,060	60,612	55,691	41,025
6145	WIRE AND CABLE ELECTRICAL	74,343	63,097	47,171	51,628
6150	MISC ELECTRIC POWER & DISTRIBUTION EQ	16,889	18,392	31,918	26,600
	TOTAL	609,450	613,796	671,931	673,715
62	LIGHTING FIXTURES AND LAMPS				
6210	INDOOR & OUTDOOR ELEC LIGHTING FIXTURES	9,833	11,985	6,566	12,669
6220	ELECTRIC VEHICULAR LIGHTS AND FIXTURES	15,319	23,951	15,616	17,566
6230	ELECTRIC PORTABLE & HAND LIGHTING EQUIP	19,133	27,735	31,166	21,042

**Table C. Supplies and Equipment
(Continued)
(Amounts in Thousands)**

FSC CODE	DESCRIPTION	FISCAL YEAR			
		1981	1982	1983	1984
62	LIGHTING FIXTURES AND LAMPS				
6240	ELECTRIC LAMPS	18,520	22,377	19,301	19,417
6250	BALLASTS LAMPHOLDERS AND STARTERS	1,515	1,231	703	662
6260	NONELECTRICAL LIGHTING FIXTURES	2,890	2,754	3,559	4,147
	TOTAL	22,925	26,362	23,563	24,226
63	ALARM AND SIGNAL SYSTEMS				
6310	TRAFFIC AND TRANSIT SIGNAL SYSTEMS	569	813	210	31
6320	SHIPBOARD ALARM AND SIGNAL SYSTEMS	3,420	5,252	5,634	11,947
6330	RAILROAD SIGNAL AND WARNING DEVICES	89	36	0	34
6340	AIRCRAFT ALARM AND SIGNAL SYSTEMS	5,654	6,030	6,378	3,308
6350	MISCELLANEOUS ALARM AND SIGNAL SYSTEMS	15,336	8,867	40,192	26,744
	TOTAL	25,068	20,998	52,314	42,064
65	MEDICAL, DENTAL, + VETERINARY EQUIPMENT + SUPPLIES				
6505	DRUGS BIOLOGICALS AND OFFICIAL REAGENTS	166,088	183,461	210,615	229,946
6508	MEDICATED COSMETICS AND TOILETRIES	871	722	809	255
6510	SURGICAL DRESSING MATERIALS	21,846	25,864	21,322	28,771
6515	MEDICAL SURGICAL INSTRUMENTS EQUIP & SUP	60,612	81,277	59,949	74,669
6520	DENTAL INSTRUMENTS EQUIP AND SUPPLIES	11,861	13,780	12,040	18,348
6525	X-RAY EQUIP SUPPLIES - MEDICAL & DENTAL	47,831	38,671	45,388	41,332
6530	HOSPITAL FURNITURE EQUIP UTENSILS & SUP	26,903	37,860	35,779	38,283
6532	HOSPITAL & SURGICAL CLOTHING	12,071	14,073	8,991	9,200
6540	OPTICIANS INSTRUMENTS EQUIP & SUPPLIES	6,521	5,028	8,361	6,610
6545	MEDICAL SETS KITS AND OUTFITS	8,491	6,022	6,980	10,494
6550	IN VITRO DIAGNOSTIC SUBSTANCES, REAGENTS, TEST KITS	NA	NA	2,030	9,959
	TOTAL	364,694	406,776	412,062	484,637
66	INSTRUMENTS AND LABORATORY EQUIPMENT				
6605	NAVIGATIONAL INSTRUMENTS	304,267	422,046	226,435	287,408
6610	FLIGHT INSTRUMENTS	90,770	123,930	130,316	124,176
6615	AUTOMATIC PILOT MECHANISMS AIRBORNE GYRO	127,632	125,193	130,412	178,459
6620	ENGINE INSTRUMENTS	33,135	48,665	34,460	55,865
6625	ELECTRICAL ELECTRONIC MEASURING INSTRUMT	359,211	526,557	568,373	479,456
6630	CHEMICAL ANALYSIS INSTRUMENTS	16,518	27,142	15,620	19,136
6635	PHYSICAL PROPERTIES TESTING EQUIPMENT	14,634	22,115	18,136	28,911
6640	ENVIRONMENTAL CHAMBERS AND RELATED EQUIP	4,242	7,547	4,785	9,494
6645	LABORATORY EQUIPMENT AND SUPPLIES	17,767	27,568	19,461	20,217
6648	TIME MEASURING INSTRUMENTS	6,614	11,732	6,078	5,737
6650	OPTICAL INSTRUMENTS	38,436	37,221	38,567	26,226
6655	GEOLOGICAL AND ASTRONOMICAL INSTRUMENTS	1,053	3,496	5,013	4,450
6660	METEOROLOGICAL INSTRUMENTS AND APPARATUS	17,154	12,839	11,615	34,799
6665	HAZARD-DETECTING INSTRUMENTS & APPARATUS	34,781	66,643	54,230	61,984
6670	SCALES AND BALANCES	3,000	3,322	3,428	3,605
6675	DRAFTING SURVEYING & MAPPING INSTRUMENTS	48,616	39,695	66,863	59,434
6680	LIQUID-GAS-MOTION MEASURING INSTRUMENTS	32,735	39,821	28,470	37,661
6685	PRESSURE TEMP HUMIDITY INSTRUMENTS	47,893	59,820	40,226	70,463
6695	COMBINATION & MISCELLANEOUS INSTRUMENTS	29,639	24,619	17,910	18,500
	TOTAL	1,230,117	1,629,771	1,460,526	1,508,199
67	PHOTOGRAPHIC EQUIPMENT				
6710	CAMERAS MOTION PICTURE	9,745	23,595	20,326	25,421
6720	CAMERAS STILL PICTURE	33,829	58,809	32,926	44,021
6730	PHOTOGRAPHIC PROJECTION EQUIPMENT	13,952	7,593	6,853	8,386
6740	PHOTO DEVELOPLNG AND FINISHING EQUIP	11,328	16,846	17,799	17,441
6750	PHOTOGRAPHIC SUPPLIES	48,380	49,095	34,416	34,885
6760	PHOTOGRAPHIC EQUIPMENT AND ACCESSORIES	14,225	20,089	17,618	57,181
6770	FILM PROCESSED	5,308	5,927	4,767	5,902
6780	PHOTOGRAPHIC SETS KITS AND OUTFITS	8,308	15,372	4,901	11,743
	TOTAL	145,071	197,326	139,596	203,090

**Table C. Supplies and Equipment
(Continued)
(Amounts in Thousands)**

FSC CODE	DESCRIPTION	FISCAL YEAR			
		1981	1982	1983	1984
68	CHEMICALS AND CHEMICAL PRODUCTS				
6810	CHEMICALS	29,937	39,404	22,218	31,108
6820	DYES	1,607	2,793	2,899	876
6830	GASES COMPRESSED AND LIQUEFIED	11,643	15,491	7,048	9,607
6840	PEST CONTROL AGENTS AND DISINFECTANTS	5,807	9,111	5,791	8,829
6850	MISCELLANEOUS CHEMICAL SPECIALTIES	63,175	66,642	74,008	81,079
	TOTAL	112,169	123,441	111,934	101,499
69	TRAINING AIDS AND DEVICES				
6910	TRAINING AIDS	60,068	66,695	122,241	111,225
6920	ARMAMENT TRAINING DEVICES	129,003	116,994	204,031	267,991
6930	OPERATIONAL TRAINING DEVICES	368,897	408,814	365,099	326,013
6940	COMMUNICATION TRAINING DEVICES	4,641	18,239	13,634	11,229
	TOTAL	560,809	632,742	725,205	736,458
70	GENL PURPOSE ADPE, SOFTWARE, SUPPLIES + SUPPORT EQU				
7010	ADPE CONFIGURATION	190,980	363,407	464,667	696,731
7020	ADP CENTRAL PROCESSING UNIT - ANALOG	9,264	10,370	21,265	21,566
7021	ADP CENTRAL PROCESSING UNIT - DIGITAL	62,661	54,196	91,207	69,001
7022	ADP CENTRAL PROCESSING UNIT - HYBRID	1,369	926	990	3,926
7025	ADP INPUT/OUTPUT AND STORAGE DEVICES	120,574	142,466	197,393	267,419
7030	ADP SOFTWARE	35,421	73,662	73,318	105,410
7035	ADP ACCESSORIAL EQUIP	74,900	107,433	166,443	212,734
7040	PUNCHED CARD EQUIP	7,087	3,155	5,949	6,353
7042	MINI & MICRO COMPUTER CONTROL DEVICES	NA	1,350	3,693	7,221
7045	ADP SUPPLIES AND SUPPORT EQUIP	40,443	46,633	36,657	33,562
7050	ADP COMPONENTS	47,636	56,092	52,555	105,767
	TOTAL	610,375	861,730	1,114,577	1,546,732
71	FURNITURE				
7105	HOUSEHOLD FURNITURE	44,649	74,809	39,791	64,699
7110	OFFICE FURNITURE	18,065	38,692	29,325	52,926
7125	CABINETS LOCKERS BINS AND SHELVING	16,360	27,091	20,169	31,009
7195	MISCELLANEOUS FURNITURE AND FIXTURES	12,861	23,467	10,146	11,464
	TOTAL	91,955	164,259	99,453	160,318
72	HOUSEHOLD + COML FURNISHINGS + APPLIANCES				
7210	HOUSEHOLD FURNISHINGS	40,103	24,552	43,440	24,961
7215	FLOOR COVERINGS	16,776	16,424	11,097	11,262
7220	DRAPERIES AWNINGS AND SHADES	7,062	12,521	7,761	9,550
7230	HOUSEHOLD AND COMMERCIAL UTIL CONTAINERS	3,193	5,250	3,650	6,776
7290	MSC HOUSEHOLD FURNISHINGS APPLIANCES	3,155	3,696	3,946	3,247
	TOTAL	72,311	62,643	70,094	55,796
73	FOOD PREPARATION AND SERVING EQUIPMENT				
7310	FOOD COOKING BAKING SERVING EQUIP	21,746	23,935	20,503	13,989
7320	KITCHEN EQUIPMENT AND APPLIANCES	10,305	16,749	11,622	16,256
7330	KITCHEN HAND TOOLS AND UTENSILS	929	12,299	235	2,394
7340	CUTLERY AND FLATWARE	992	1,902	692	1,374
7350	TABLEWARE	2,700	4,736	3,940	2,206
7360	SETS KITS & OUTFITS FOOD PREP & SERVING	3,976	2,801	10,248	5,467
	TOTAL	40,648	61,424	47,640	43,706
74	OFFICE MACHINES, VISIBLE RECORD EQUIP + ADP EQUIP				
7420	ACCOUNTING AND CALCULATING MACHINES	4,089	1,674	656	848
7430	TYPEWRITERS & OFFICE TYPE COMPOSING MACH	15,727	23,030	15,130	12,735
7435	OFFICE INFORMATION SYSTEM EQUIPMENT	NA	7,394	21,966	37,666
7450	OFFICE TYPE SOUND RECORDING REPRD MACH	2,534	2,478	1,646	3,239
7460	VISIBLE RECORD EQUIPMENT	9,921	6,666	10,619	6,204
7490	MISCELLANEOUS OFFICE MACHINES	9,190	10,731	6,916	14,366

**Table C. Supplies and Equipment
(Continued)
(Amounts in Thousands)**

FSC CODE	DESCRIPTION	FISCAL YEAR			
		1981	1982	1983	1984
74	OFFICE MACHINES, VISIBLE RECORD EQUIP + ADP EQUIP				
	TOTAL	41,461	52,193	57,132	75,100
75	OFFICE SUPPLIES AND DEVICES				
7810	OFFICE SUPPLIES	4,357	7,289	2,092	4,134
7520	OFFICE DEVICES AND ACCESSORIES	1,035	2,593	847	1,732
7530	STATIONERY AND RECORD FORMS	33,981	42,834	22,854	22,371
7540	STANDARD FORMS	1,179	1,603	188	1,206
	TOTAL	40,552	54,319	25,981	29,442
76	BOOKS, MAPS AND OTHER PUBLICATIONS				
7610	BOOKS AND PAMPHLETS	22,458	25,173	26,062	24,644
7630	NEWSPAPERS AND PERIODICALS	3,991	4,787	3,629	3,699
7640	MAPS ATLASES CHARTS AND GLOBES	447	841	2,640	4,827
7650	DRAWINGS AND SPECIFICATIONS	3,458	250	1,053	2,678
7670	MICROFILM PROCESSED	2,129	2,962	2,362	1,507
7690	MISCELLANEOUS PRINTED MATTER	20,957	15,364	19,976	10,993
	TOTAL	53,440	49,077	55,922	48,248
77	MUSICAL INST, PHONOGRAPHS, + HOME TYPE RADIOS				
7710	MUSICAL INSTRUMENTS	782	1,201	309	334
7720	MUSICAL INSTRUMENT PARTS AND ACCESSORIES	126	115	116	71
7730	PHONOGRAPHS RADIOS - TV SETS HOME TYPE	1,727	1,217	535	352
7740	PHONOGRAPH RECORDS	248	190	337	251
	TOTAL	2,883	2,723	1,297	1,008
78	RECREATIONAL AND ATHLETIC EQUIPMENT				
7810	ATHLETIC AND SPORTING EQUIPMENT	1,848	3,843	2,429	1,887
7820	GAMES TOYS AND WHEELED GOODS	496	711	351	568
7830	RECREATIONAL AND GYMNASTIC EQUIPMENT	2,894	3,938	2,498	5,248
	TOTAL	5,038	8,292	5,278	7,703
79	CLEANING EQUIPMENT AND SUPPLIES				
7910	FLOOR POLISHERS AND VACUUM CLEANERS	1,706	2,563	677	815
7920	BROOMS BRUSHES MOPS AND SPONGES	1,739	3,064	2,232	1,664
7930	CLEANING - POLISHING COMPOUNDS AND PREPA	43,248	48,520	27,718	23,595
	TOTAL	46,693	54,167	30,627	26,294
80	BRUSHES, PAINTS, SEALERS AND ADHESIVES				
8010	PAINTS DOPES VARNISHES AND RELATED PROD	9,394	10,453	3,478	3,662
8020	PAINT AND ARTISTS BRUSHES	67	11	0	0
8030	PRESERVATIVE AND SEALING COMPOUNDS	8,340	2,169	1,183	1,503
8040	ADHESIVES	447	839	278	555
	TOTAL	18,248	13,472	4,939	5,720
81	CONTAINERS, PACKAGING + PACKING SUPPLIES				
8105	BAGS AND SACKS	9,862	9,932	14,001	10,184
8110	DRUMS AND CANS	13,680	7,367	9,870	13,284
8115	BOXES CARTONS AND CRATES	8,886	8,442	5,711	3,343
8120	GAS CYLINDERS	7,509	8,180	4,452	4,083
8125	BOTTLES AND JARS	823	1,414	261	285
8130	REELS AND SPOOLS	773	788	1,007	388
8135	PACKAGING AND PACKING BULK MATERIALS	6,781	7,205	4,014	4,218
8140	AMMUNITION & NUCLEAR ORDNANCE BOXES	30,783	49,079	59,797	84,502
8145	SPECIALIZED SHIPPING & STORAGE CONTAINER	21,993	32,136	32,224	83,807
	TOTAL	100,870	120,821	131,137	184,064

**Table C. Supplies and Equipment
(Continued)
(Amounts in Thousands)**

FSC CODE	DESCRIPTION	FISCAL YEAR			
		1981	1982	1983	1984
83	TEX, LTHR, FURS, APPAREL + SHOE FIND, TENTS + FLAGS				
8308	TEXTILE FABRICS	207,862	167,964	159,654	107,785
8310	YARN AND THREAD	445	955	507	205
8318	NOTIONS AND APPAREL FINDINGS	3,675	5,878	7,276	4,503
8320	PADDING AND STUFFING MATERIALS	304	857	1,430	2,500
8325	FUR MATERIALS	NA	-18	0	0
8330	LEATHER	416	524	142	175
8338	SHOE FINDINGS AND SOLING MATERIALS	893	477	224	293
8340	TENTS AND TARPAULINS	25,358	31,474	51,087	79,547
8345	FLAGS AND PENNANTS	3,919	3,091	3,224	5,366
	TOTAL	242,650	211,015	223,524	200,476
84	CLOTHING AND INDIVIDUAL EQUIPMENT				
8405	OUTERWEAR MENS	178,687	146,873	128,003	162,528
8410	OUTERWEAR WOMENS	17,117	16,271	16,837	14,076
8415	CLOTHING SPECIAL PURPOSE	150,329	339,248	292,034	192,783
8420	UNDERWEAR AND NIGHTWEAR MENS	10,873	25,744	34,830	30,323
8425	UNDERWEAR AND NIGHTWEAR WOMENS	103	0	0	53
8430	FOOTWEAR MENS	121,743	105,262	99,672	122,950
8435	FOOTWEAR WOMENS	2,046	1,109	2,081	0
8440	HOSIERY HANDWEAR & CLOTHING ACCESSOR MENS	18,664	18,944	19,653	18,695
8445	HOSIERY HANDWEAR-CLOTHING ACCESSO WOMENS	3,100	2,043	659	1,260
8450	CHILDREN & INFANTS APPAREL & ACCESSORIES	6,690	12,756	12,099	8,184
8455	BADGES AND INSIGNIA	19,437	18,607	19,246	12,415
8460	LUGGAGE	4,709	7,321	5,245	4,204
8465	INDIVIDUAL EQUIPMENT	69,731	63,411	138,606	102,371
8470	ARMOR PERSONAL	15,284	22,170	94,684	114,644
8475	SPEC FLIGHT CLOTHING & ACCESSORIES	8,079	13,794	20,460	14,359
	TOTAL	626,611	813,551	862,291	799,055
85	TOILETRIES				
8510	PERFUMES TOILET PREPARATIONS AND POWDERS	6,213	6,798	4,563	5,194
8520	TOILET SOAP SHAVING PREP - DENTIFRICES	9,182	9,932	7,563	9,556
8530	PERSONAL TOILETRY ARTICLES	3,070	3,725	3,891	3,457
8540	TOILETRY PAPER PRODUCTS	16,280	15,134	10,699	13,963
	TOTAL	33,725	35,589	26,936	32,170
87	AGRICULTURAL SUPPLIES				
8710	FORAGE AND FEED	6,132	6,607	4,531	3,440
8720	FERTILIZERS	1,088	1,475	438	668
8730	SEEDS AND NURSERY STOCK	623	466	297	231
	TOTAL	7,843	7,548	5,264	4,337
88	LIVE ANIMALS				
8810	LIVE ANIMALS RAISED FOR FOOD	14	15	0	0
8820	LIVE ANIMALS NOT RAISED FOR FOOD	254	274	41	587
	TOTAL	268	289	41	587
89	SUBSISTENCE				
8900		531	1,179	6,086	0
8905	MEAT POULTRY AND FISH	267,392	626,555	458,634	459,716
8910	DAIRY FOODS AND EGGS	198,384	169,617	118,531	118,385
8915	FRUITS AND VEGETABLES	178,783	175,641	108,649	125,054
8920	BAKERY AND CEREAL PRODUCTS	109,457	114,392	81,495	117,261
8925	SUGAR CONFECTIONERY AND NUTS	55,696	47,070	37,343	39,543
8930	JAMS JELLIES AND PRESERVES	19,657	11,720	8,141	7,871
8935	SOUPS AND BOUILLONS	15,336	15,095	9,323	7,018
8940	SPECIAL DIETARY FOODS - SPECIALTY PREP	53,647	59,966	69,060	72,374
8945	FOOD OILS AND FATS	23,351	23,027	16,028	21,260
8950	CONDIMENTS AND RELATED PRODUCTS	50,928	52,563	52,908	33,037
8955	COFFEE TEA AND COCOA	67,962	65,478	56,678	50,636
8960	BEVERAGES NONALCOHOLIC	34,574	38,627	28,759	24,060
8965	BEVERAGES ALCOHOLIC	108	277	0	0

**Table C. Supplies and Equipment
(Continued)
(Amounts in Thousands)**

FSC CODE	DESCRIPTION	FISCAL YEAR			
		1981	1982	1983	1984
89	SUBSISTENCE				
8970	COMPOSITE FOOD PACKAGES	142,873	84,184	49,855	36,365
8975	TOBACCO PRODUCTS	101,310	119,433	85,787	72,373
8999	FOOD ITEMS FOR RESALE	95,588	142,847	44,225	54,851
	TOTAL	1,833,975	1,787,783	1,228,878	1,239,641
91	FUELS, LUBRICANTS, OILS AND WAXES				
9110	FUELS SOLID	89,883	112,529	117,170	93,225
9130	LIQUID PROPELLANTS & FUEL PETROLEUM BASE	6,194,013	6,775,986	6,428,464	5,021,042
9138	LIQUID PROPELLANT FUELS - CHEMICAL BASE	43,910	48,781	82,212	47,579
9140	FUEL OILS	6,192,239	3,538,740	2,868,134	3,704,455
9150	OILS - GREASES CUTTING LUBR & HYDRAULIC	415,893	102,441	70,403	88,102
9160	MISCELLANEOUS WAXES OILS AND FATS	1,392	1,201	285	897
	TOTAL	12,937,310	10,578,878	9,366,648	8,933,100
93	NONMETALLIC FABRICATED MATERIALS				
9310	PAPER AND PAPERBOARD	5,893	7,284	4,248	8,778
9320	RUBBER FABRICATED MATERIALS	1,982	8,698	1,337	1,258
9330	PLASTICS FABRICATED MATERIALS	14,583	20,788	12,134	19,606
9340	GLASS FABRICATED MATERIALS	1,844	2,004	1,248	1,321
9350	REFRACTORIES & FIRE SURFACING MATERIALS	1,925	3,181	980	994
9390	MISC FABRICATED NONMETALLIC MATERIALS	2,575	2,869	1,838	1,594
	TOTAL	28,582	42,822	21,548	31,549
94	NONMETALLIC CRUDE MATERIALS				
9410	CRUDE GRADES OF PLANT MATERIALS	295	237	0	0
9420	FIBERS VEGETABLE ANIMAL AND SYNTHETIC	25	0	0	0
9430	MISC CRUDE ANIMAL PRODUCTS - INEDIBLE	126	12	0	0
9440	MISC CRUDE AGRICULTURAL & FORESTRY PROD	145	413	37	0
9450	NONMETALLIC SCRAP EXCEPT TEXTILE	524	205	1,248	0
	TOTAL	1,115	867	1,285	0
95	METAL BARS, SHEETS AND SHAPES				
9505	WIRE NONELECTRICAL IRON AND STEEL	728	1,019	787	1,402
9510	BARS AND RODS IRON AND STEEL	8,185	8,878	4,272	5,148
9515	PLATE SHEET AND STRIP IRON AND STEEL	33,048	31,889	23,793	22,910
9520	STRUCTURAL SHAPES IRON AND STEEL	7,937	8,522	9,271	3,539
9525	WIRE NONELECTRICAL NONFERROUS BASE METAL	427	858	279	305
9530	BARS AND RODS NONFERROUS BASE METAL	15,784	8,500	25,786	3,807
9535	PLATE SHEET STRIP-NONFERROUS BASE METAL	27,757	27,847	12,710	15,078
9540	STRUCTURAL SHAPES NONFERROUS BASE METAL	2,399	2,206	1,528	1,727
9545	PLATE SHEET STRIP & WIRE PRECIOUS METAL	997	357	273	3,842
	TOTAL	97,240	90,874	78,877	87,758
96	OTHER MINERALS AND THEIR PRIMARY PRODUCTS				
9610	ORES	33	80	77	26
9620	MINERALS NATURAL AND SYNTHETIC	138	425	186	611
9630	ADDITIVE METAL MATERIALS & MASTER ALLOYS	307	819	-904	230
9640	IRON & STEEL PRIMARY & SEMIFINISHED PROD	1,210	1,799	2,821	2,604
9650	NONFERROUS BASE METAL REFINERY	8,917	11,852	684	5,701
9660	PRECIOUS METALS PRIMARY FORMS	72	97	305	48
9670	IRON AND STEEL SCRAP	0	133	0	0
9680	NONFERROUS METAL SCRAP	102	0	185	0
	TOTAL	10,777	14,815	3,084	8,218
99	MISCELLANEOUS				
9905	SIGNS ADVERTISING DISPLAYS IDENT PLATES	1,750	4,754	3,918	2,581
9910	JEWELRY	415	139	0	38
9915	COLLECTORS ITEMS	131	18	0	28
9920	SMOKERS ARTICLES AND MATCHES	139	158	172	213

**Table C. Supplies and Equipment
(Concluded)
(Amounts in Thousands)**

FSC CODE	DESCRIPTION	FISCAL YEAR			
		1981	1982	1983	1984
99	MISCELLANEOUS				
		1,000	353	226	594
9925	ECCLESIASTICAL EQUIP FURNISHING & SUP	1,047	456	141	2,931
9930	MEMORIALS CEMETERY MORTUARY EQUIP & SUP	44,184	71,532	26,439	19,658
9998	NONFOOD ITEMS FOR RESALE	239,615	210,178	394,504	229,998
9999	MISCELLANEOUS ITEMS	-----	-----	-----	-----
	TOTAL	266,261	267,667	427,397	258,016
		-----	-----	-----	-----
	TOTAL SUPPLIES AND EQUIPMENT	64,059,290	72,821,422	81,435,742	84,190,305
		-----	-----	-----	-----

LIST OF ABBREVIATIONS

The following abbreviations are used in this publication:

AC	Air Conditioning	GND	Ground
ACCY	Accessory	GOCO	Government Owned, Contractor Operated
ACFT	Aircraft	GOGO	Government Owned, Government Operated
ADMIN	Administration	GOVT	Government
ADP	Automatic Data Processing	GUIDE	Guided
ADRS	Address	HOSP	Hospital
AIR COND	Air Conditioning	HWY	Highway
AMMO	Ammunition		
ASSY	Assembly		
ASSOC	Associated		
		INDUST	Industrial
BLDG	Building	INST	Instrument
BTWN	Between		
		LDG	Landing
CFT	Craft	LIQ	Liquid
CGO	Cargo	LTHR	Leather
CHEM	Chemical		
CHG	Charge	MACH	Machine
CNTL	Control	MAINT	Maintenance
COML	Commercial	MAP	Mapping
COMM	Communications	MAT	Material
COMP	Component	MEAS	Measure
CONST, CONSTR	Construction	MECH	Mechanical
COOP	Cooperative	MFG	Manufacturing
CTMS	Countermeasures	MISC, MISCL	Miscellaneous
CYC	Cycle	MM	Millimeter
		MSC	Miscellaneous
DEV	Development	MSL	Missile
DLVRY	Delivery		
DR	Driven	NUCL	Nuclear
DV	Device		
		ORD	Ordinance
EAM	Electric Accounting Machine		
ELCT	Electronic	PHOTO	Photographic
ENG	Engine	PRCHT	Parachute
ENGR	Engineer	PREP	Preparation
ENVIRON	Environment	PROP	Property
EQ, EQU, EQUIP	Equipment	PROPUL	Propulsion
EX, EXC	Except	PRTG	Printing
EXCL	Exclude	PUB	Publication
EXPLO	Explosive		
		REAC	Reactor
FAB	Fabricated	RECR	Recreation
FAC	Facilities	REL	Related
FIL	Filter	REPR	Repair
FIND	Findings	REPRO	Reproduction
FLTG	Floating		

LIST OF ABBREVIATIONS (Continued)

SECD	Secondary	TEX	Textile
SLD	Solid	TRANS	Transmission
SML	Small	TRKS	Trucks
SP	Space	UN	Unit
SPEC	Special	UNDWTR	Underwater
SPECIALIZED	Specialized	UTIL	Utility
STA	Station	VEH	Vehicle
SUP	Supply	VET	Veterinary
SURG	Surgical	WPN	Weapon
SV, SVC	Service		
SYS	System		

