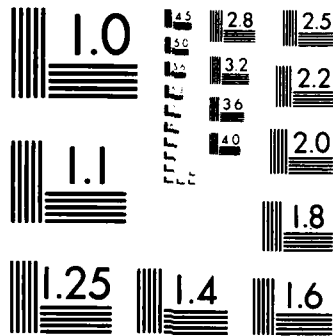


1 OF 1

AD-A149 480



MICROCOPY RESOLUTION TEST CHART
NATIONAL BUREAU OF STANDARDS-1963-A

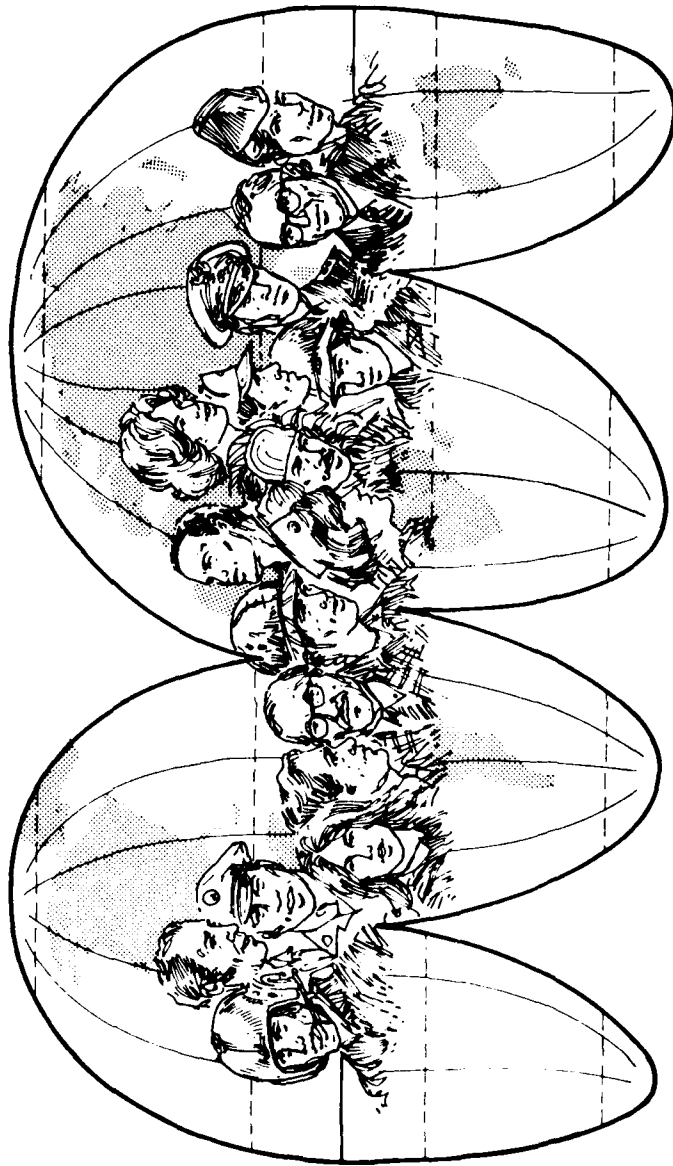
THIS REPORT IS UNCLASSIFIED AND
ITS DISTRIBUTION IS UNLIMITED



M05

Department of Defense
WORLDWIDE MANPOWER DISTRIBUTION
BY GEOGRAPHICAL AREA

September 30, 1984



Department of Defense

**Worldwide Manpower Distribution
by Geographical Area**

September 30, 1984

Department of Defense
Washington Headquarters Services
Directorate for Information
Operations and Reports

FOREWORD

Worldwide Manpower Distribution by Geographical Area is published quarterly and contains summary data on the worldwide distribution of Department of Defense (DoD) active duty military and civilian personnel and their dependents, by country and DoD component. Data concerning the dependents of active duty military and civilian personnel are updated semiannually, in March and September.

T A B L E O F C O N T E N T S

<u>SECTION</u>		<u>PAGE</u>
1	Active Duty Military Strengths by Regional Area and by Country	3
2	Total Civilian Personnel Strengths by Regional Area and by Country - Military Functions	11
3	*Table PI4 - Summary of Dependents of Military and Civilian Personnel	29
	*Table P309C - Dependent Strengths by Regional Area and by Country	31
	Glossary	44

*Prepared semiannually, this table is updated in March and September.

S E C T I O N 1

D E P A R T M E N T O F D E F E N S E

ACTIVE DUTY MILITARY PERSONNEL STRENGTHS
BY REGIONAL AREA AND BY COUNTRY

TABLE P309A

DEPARTMENT OF DEFENSE
ACTIVE DUTY MILITARY PERSONNEL STRENGTHS BY REGIONAL AREA AND BY COUNTRY

SEPTEMBER 30, 1984

REGIONAL AREA/COUNTRY	TOTAL	ARMY	NAVY	MARINE CORPS	AIR FORCE
U. S. TERRITORY AND SPECIAL LOCATIONS					
CONTINENTAL UNITED STATES (CONUS)	1,318,968	468,328	270,163	149,107	431,370
ALASKA	20,662	8,098	1,586	212	10,766
HAWAII	47,648	19,222	12,960	8,703	6,763
AMERICAN SAMOA	1	1	0	0	0
GUAM	9,175	37	4,715	377	4,046
JOHNSTON ATOLL	140	133	0	0	7
MIDWAY ISLANDS	12	0	12	0	0
PUERTO RICO	3,877	474	3,181	178	44
TRUST TERRITORY OF THE PACIFIC ISLANDS	102	59	30	0	13
VIRGIN ISLANDS OF THE U.S.	12	10	1	0	1
WAKE ISLAND	6	0	0	0	6
TRANSIENTS	58,362	20,552	13,629	7,910	16,271
AFLOAT	168,462	0	168,462	0	0
TOTAL-U. S. TERR. AND SPECIAL LOCATIONS	1,627,427	516,914	474,739	166,487	469,287
FOREIGN COUNTRIES					
(1) WESTERN & SOUTHERN EUROPE					
AUSTRIA	26	4	0	20	2
BELGIUM*	2,484	1,354	121	30	979
CYPRUS	13	4	0	9	0
DENMARK*	58	8	18	10	22
FINLAND*	18	4	2	10	2
FRANCE*	73	15	11	36	11
GERMANY (FED. REPUBLIC & WEST BERLIN)*	253,722	213,276	341	93	40,012
GIBRALTAR	3	0	3	0	0
GREECE*	3,711	523	470	13	2,705
GREENLAND*	329	0	0	0	329
ICELAND*	3,117	2	1,839	106	1,170
IRELAND	7	2	0	5	0
ITALY*	14,809	4,359	4,790	257	5,403
LUXEMBOURG*	10	3	0	7	0
NETHERLANDS*	2,823	835	15	10	1,963
NORWAY*	226	43	42	17	124
PORTUGAL*	1,705	64	396	10	1,235
SPAIN*	9,436	20	4,012	214	5,190
SWEDEN	15	1	2	7	5
SWITZERLAND	44	20	0	21	3

1/ Includes five civic action teams of approximately 13 persons each (1 in Palau and 4 in the Federated States of Micronesia).

TABLE P309A

DEPARTMENT OF DEFENSE
ACTIVE DUTY MILITARY PERSONNEL STRENGTHS BY REGIONAL AREA AND BY COUNTRY

REGIONAL AREA/COUNTRY	SEPTEMBER 30, 1984				
	TOTAL	ARMY	NAVY	MARINE CORPS	AIR FORCE
TURKEY*	5,449	1,278	101	18	4,052
UNITED KINGDOM*	28,823	213	2,291	348	25,971
AFL0AT	24,782	0	22,875	1,907	0
TOTAL-WESTERN & SOUTHERN EUROPE	351,683	222,028	37,329	3,148	89,178
(*EUROPEAN NATO)	(326,775)	(221,993)	(14,447)	(1,169)	(89,166)
(*EUROPEAN NATO PERMANENTLY ASSIGNED)	(323,103)	(218,190)	(14,396)	(1,169)	(89,348)
(2) EAST ASIA AND PACIFIC					
AUSTRALIA	746	9	434	10	293
BURMA	12	4	0	6	2
CHINA	23	5	3	12	3
HONG KONG	42	11	15	11	5
INDONESIA	47	11	14	11	11
JAPAN (INCLUDING OKINAWA)	45,761	2,646	7,504	20,643	14,968
MALAYSIA	26	14	2	8	2
NEW ZEALAND	68	4	48	5	11
PHILIPPINES	15,319	45	5,332	665	9,277
REPUBLIC OF KOREA	40,785	29,221	3,373	133	11,058
SINGAPORE	26	2	14	8	2
THAILAND	105	55	9	14	27
TONGA	1	1	0	0	0
AFL0AT	18,338	0	15,578	2,760	0
TOTAL-EAST ASIA & PACIFIC	121,299	32,028	29,326	24,286	35,659
(3) AFRICA, NEAR EAST AND SOUTH ASIA					
AFGHANISTAN	6	0	0	6	0
ALGERIA	8	2	0	6	0
BAHRAIN	98	4	93	0	1
BANGLADESH	9	3	0	6	0
BRITISH INDIAN OCEAN TERRITORY (INCLUDES DIEGO GARCIA)	1,253	0	1,239	0	14
CAMEROON	8	2	0	6	0
CHAD	11	3	0	8	0
CONGO	8	1	1	6	0
EGYPT	1,048	913	26	25	84
ETHIOPIA	7	0	0	7	0
GABON	6	0	0	6	0
GHANA	9	1	0	8	0
INDIA	32	5	3	19	5
ISRAEL	77	23	9	26	19

TABLE P309A

DEPARTMENT OF DEFENSE
ACTIVE DUTY MILITARY PERSONNEL STRENGTHS BY REGIONAL AREA AND BY COUNTRY

SEPTEMBER 30, 1984

REGIONAL AREA/COUNTRY	TOTAL	ARMY	NAVY	MARINE CORPS	AIR FORCE
IVORY COAST	10	3	0	7	0
JORDAN	29	16	0	8	5
KENYA	39	9	2	19	9
KUWAIT	28	17	2	8	1
LEBANON	25	10	0	15	0
LIBERIA	20	8	3	7	2
MADAGASCAR	7	0	2	5	0
MALAWI	2	2	0	0	0
MALI	6	0	0	6	0
MAURITIUS	6	0	0	6	0
MOROCCO	54	17	4	18	15
NEPAL	8	2	0	6	0
NIGER	6	0	0	6	0
NIGERIA	18	4	0	11	3
OMAN	19	2	1	10	6
PAKISTAN	34	7	2	18	7
ST. HELENA (INCLUDES ASCENSION ISLAND)	2	0	0	0	2
SAUDI ARABIA	537	249	63	20	205
SENEGAL	11	0	2	9	0
SEYCHELLES	4	0	0	0	4
SOMALIA	26	16	2	6	2
SOUTH AFRICA	20	2	2	12	4
SRI LANKA	9	0	3	6	0
SUDAN	25	8	0	8	9
SYRIA	9	2	0	7	0
TANZANIA, UNITED REPUBLIC OF	7	0	0	7	0
TUNISIA	31	19	2	7	3
UNITED ARAB EMIRATES	8	2	0	4	2
BURKINA FASO	6	0	0	6	0
YEMEN (SANAA)	17	7	0	6	4
ZAIRE	30	10	0	14	6
ZAMBIA	5	0	0	5	0
ZIMBABWE	6	2	0	4	0
AFLOAT	13,353	0	13,223	130	0
TOTAL-AFRICA, NEAR EAST & SOUTH ASIA	16,997	1,371	14,684	530	412
(4) WESTERN HEMISPHERE					
ANTIGUA	77	2	74	0	1
ARGENTINA	19	4	2	8	5
BAHAMAS, THE	45	1	21	7	16

TABLE P308A
DEPARTMENT OF DEFENSE
ACTIVE DUTY MILITARY PERSONNEL STRENGTHS BY REGIONAL AREA AND BY COUNTRY

REGIONAL AREA/COUNTRY	SEPTEMBER 30, 1984				
	TOTAL	ARMY	NAVY	MARINE CORPS	AIR FORCE
BARBADOS	12	4	1	7	0
BELIZE	3	3	0	0	0
BERMUDA	1,493	0	1,404	89	0
BOLIVIA	15	5	1	7	2
BRAZIL	48	12	7	22	7
CANADA	542	17	395	9	121
CHILE	19	3	1	13	2
COLOMBIA	33	12	2	13	6
COSTA RICA	14	5	0	9	0
CUBA (GUANTANAMO)	2,347	0	1,889	456	2
DOMINICAN REPUBLIC	18	5	3	8	2
ECUADOR	22	4	3	8	7
EL SALVADOR	51	25	0	23	3
GUENADA	165	159	0	6	0
GUATEMALA	18	6	0	11	1
GUYANA	7	1	0	6	0
HAITI	12	4	0	7	1
HONDURAS	846	747	2	88	9
JAMAICA	14	1	3	10	0
MEXICO	32	11	3	12	6
NICARAGUA	10	2	0	7	1
PANAMA	9,354	6,620	391	156	2,187
PARAGUAY	12	3	1	7	1
PERU	26	5	7	8	6
ST. CHRISTOPHER-NEVIS-ANGUILLA	2	2	0	0	0
SURINAME	2	2	0	0	0
URUGUAY	12	2	1	7	2
VENEZUELA	37	5	6	8	18
AFLOAT	4,787	0	4,124	663	0
TOTAL-WESTERN HEMISPHERE	20,094	7,672	8,341	1,675	2,406
(5) ANTARCTICA	65	0	65	0	0
(6) EASTERN EUROPE					
BULGARIA	9	2	0	5	2
CZECHOSLOVAKIA	11	1	0	6	4
GERMAN DEMOCRATIC REPUBLIC	48	42	0	6	0
HUNGARY	13	4	0	8	1
POLAND	15	3	0	11	1
ROMANIA	14	3	0	10	1

2/ Number includes military personnel on TDY for planning and conduct of exercises.

TABLE P309A

DEPARTMENT OF DEFENSE
ACTIVE DUTY MILITARY PERSONNEL STRENGTHS BY REGIONAL AREA AND BY COUNTRY

SEPTEMBER 30, 1984

REGIONAL AREA/COUNTRY	TOTAL	ARMY	NAVY	MARINE CORPS	AIR FORCE
UNION OF SOVIET SOCIALIST REPUBLICS	51	8	4	33	6
YUGOSLAVIA	18	4	1	9	4
TOTAL -EASTERN EUROPE	179	67	5	88	19
(7) UNDISTRIBUTED					
ASHORE	413	100	149	0	164
TOTAL -UNDISTRIBUTED	413	100	149	0	164
TOTAL FOREIGN COUNTRIES	510,730	263,266	89,899	29,727	127,838
ASHORE	449,470	263,266	34,099	24,267	127,838
AFLOAT	61,260	0	55,800	5,460	0
TOTAL WORLDWIDE	2,138,157	780,180	564,638	196,214	597,125
ASHORE	1,908,435	780,180	340,376	190,754	597,125
AFLOAT	229,722	0	224,262	5,460	0

NOTE ASHORE INCLUDES TEMPORARILY SHORE-BASED

S E C T I O N 2

U E P A R M E N T O F D E F E N S E

TOTAL CIVILIAN PERSONNEL STRENGTHS

BY REGIONAL AREA AND BY COUNTRY

MILITARY FUNCTIONS

TABLE P309B

DEPARTMENT OF DEFENSE
TOTAL CIVILIAN PERSONNEL STRENGTHS BY REGIONAL AREA AND BY COUNTRY
MILITARY FUNCTIONS - SUMMARY

SEPTEMBER 30, 1984

REGIONAL AREA/COUNTRY	TOTAL		U.S.		FOREIGN		FOREIGN	
	TOTAL DIRECT HIRE	FOREIGN NATIONALS	CITIZENS DIRECT HIRE	FOREIGN NATIONALS	DIRECT HIRE	INDIRECT HIRE	DIRECT HIRE	INDIRECT HIRE
U. S. TERRITORY AND SPECIAL LOCATIONS								
CONTINENTAL UNITED STATES (CONUS)	890,985	131	890,854	131	0	0	0	0
ALASKA	4,546	0	4,546	0	0	0	0	0
HAWAII	20,539	0	20,539	0	0	0	0	0
GUAM	4,331	40	4,295	36	0	4	0	4
JOHNSTON ATOLL	3	0	3	0	0	0	0	0
PUERTO RICO	2,636	20	2,616	20	0	0	0	0
TRUST TERRITORY OF THE PACIFIC ISLANDS	61	13	48	13	0	0	0	0
VIRGIN ISLANDS OF THE U.S.	96	0	96	0	0	0	0	0
TOTAL-U.S. TERR. AND SPECIAL LOCATIONS	923,197	204	922,997	200	0	4	0	4
(1) WESTERN & SOUTHERN EUROPE								
AUSTRIA	10	6	4	6	0	0	0	0
BELGIUM*	486	670	478	8	662	0	0	0
CYPRUS	1	1	0	1	0	0	0	0
DENMARK*	17	14	3	14	0	0	0	0
FINLAND	3	3	0	3	0	0	0	0
FRANCE*	30	12	18	12	0	0	0	0
GERMANY (FED. REPUBLIC & WEST BERLIN)*	28,490	59,589	28,472	18	59,571	0	0	0
GREECE*	251	499	217	34	465	0	0	0
GREENLAND*	6	0	6	0	0	0	0	0
ICELAND*	343	801	142	801	0	0	0	0
IRELAND	1	1	0	1	0	0	0	0
ITALY*	4,102	2,812	1,318	2,784	28	0	0	0
LUXEMBOURG*	16	0	16	0	0	0	0	0
MALTA	1	1	0	1	0	0	0	0
NETHERLANDS*	240	399	227	13	386	0	0	0
NORWAY*	65	43	22	43	0	0	0	0
PORTUGAL*	1,158	994	164	994	0	0	0	0
SPAIN*	810	2,017	800	10	2,007	0	0	0
SWEDEN	3	2	1	2	0	0	0	0
SWITZERLAND	4	2	2	2	0	0	0	0
TURKEY*	639	361	278	361	0	0	0	0
UNITED KINGDOM*	2,970	2,296	2,078	892	1,404	0	0	0
TOTAL-WESTERN & SOUTHERN EUROPE	40,246	70,523	34,246	6,000	64,523	0	0	0

TABLE P309B

DEPARTMENT OF DEFENSE
 TOTAL CIVILIAN PERSONNEL STRENGTHS BY REGIONAL AREA AND BY COUNTRY
 MILITARY FUNCTIONS - SUMMARY

SEPTEMBER 30, 1984

REGIONAL AREA/COUNTRY	TOTAL DIRECT HIRE	TOTAL FOREIGN NATIONALS	U.S. CITIZENS DIRECT HIRE	FOREIGN NATIONALS		FOREIGN NATIONALS	
				DIRECT HIRE	INDIRECT HIRE	DIRECT HIRE	INDIRECT HIRE
* NATO COUNTRIES							
(2) EAST ASIA AND PACIFIC							
FRENCH POLYNESIA	2	2	0	2	0	0	0
AUSTRALIA	217	179	38	179	0	0	0
BURMA	1	1	0	1	0	0	0
CHINA	3	0	3	0	0	0	0
HONG KONG	17	17	0	17	0	0	0
INDONESIA	29	23	6	23	0	0	0
JAPAN (INCLUDING OKINAWA)	3,798	17,326	3,784	14	17,312	0	0
MALAYSIA	2	1	1	1	0	0	0
NEW ZEALAND	5	1	4	1	0	0	0
PAPUA NEW GUINEA	1	1	0	1	0	0	0
PHILIPPINES	13,687	12,407	1,287	12,400	7	0	0
REPUBLIC OF KOREA	14,175	15,750	1,676	12,499	3,251	0	0
SINGAPORE	29	23	6	23	0	0	0
THAILAND	30	22	8	22	0	0	0
TOTAL-EAST ASIA & PACIFIC	31,996	45,753	6,813	25,183	20,570	0	0
(3) AFRICA, NEAR EAST AND SOUTH ASIA							
ALGERIA	2	2	0	2	0	0	0
BAHRAIN	67	40	27	40	0	0	0
BANGLADESH	1	1	0	1	0	0	0
BRITISH INDIAN OCEAN TERRITORY (INCLUDES DIEGO GARCIA)	72	52	20	52	0	0	0
CAMEROON	1	1	0	1	0	0	0
EGYPT	224	195	29	195	0	0	0
GHANA	2	1	1	1	0	0	0
INDIA	11	10	1	10	0	0	0
ISRAEL	9	4	5	4	0	0	0
IVORY COAST	2	2	0	2	0	0	0
JORDAN	5	3	2	3	0	0	0
KENYA	6	3	3	3	0	0	0
KUWAIT	1	0	1	0	0	0	0
LEBANON	5	5	0	5	0	0	0
LIBERIA	4	4	0	4	0	0	0

TABLE P309B

DEPARTMENT OF DEFENSE
TOTAL CIVILIAN PERSONNEL STRENGTHS BY REGIONAL AREA AND BY COUNTRY
MILITARY FUNCTIONS - SUMMARY

SEPTEMBER 30, 1984

REGIONAL AREA/COUNTRY	TOTAL DIRECT HIRE		TOTAL FOREIGN NATIONALS		U.S. CITIZENS		FOREIGN NATIONALS		FOREIGN NATIONALS	
	DIRECT HIRE	INDIRECT HIRE	FOREIGN NATIONALS	INDIRECT HIRE	DIRECT HIRE	INDIRECT HIRE	DIRECT HIRE	INDIRECT HIRE	DIRECT HIRE	INDIRECT HIRE
MADAGASCAR	1		1		0		1		0	
MALAWI	1		1		0		1		0	
MOROCCO	9		7		2		7		2	
NEPAL	2		2		0		2		0	
NIGERIA	7		4		3		4		0	
OMAN	23		2		21		2		0	
PAKISTAN	11		11		0		11		0	
SAUDI ARABIA	1,026		162		864		162		0	
SENEGAL	1		1		0		1		0	
SOMALIA	3		1		2		1		0	
SOUTH AFRICA	3		2		1		2		0	
SRI LANKA	1		1		0		1		0	
SUDAN	5		1		4		1		0	
SYRIA	1		1		0		1		0	
TUNISIA	5		4		1		4		0	
UNITED ARAB EMIRATES	2		2		0		2		0	
BURKINA FASO	1		0		1		0		0	
YEMEN (SANA'A)	11		5		6		5		0	
ZAIRE	16		5		1		5		0	
TOTAL-AFRICA, NEAR EAST & SOUTH ASIA	1,531		536		995		536		536	
(4) WESTERN HEMISPHERE										
ANTIGUA	4		0		4		0		0	
ARGENTINA	12		10		2		10		0	
BAHAMAS, THE	14		0		14		0		0	
BARBADOS	2		0		0		2		0	
BELIZE	1		0		1		0		0	
BERMUDA	416		112		304		112		0	
BOLIVIA	7		3		4		3		0	
BRAZIL	17		10		7		10		0	
CANADA	183		149		34		149		0	
CHILE	6		4		2		4		0	
COLOMBIA	18		13		5		13		0	
COSTA RICA	6		4		2		4		0	
CUBA (GUANTANAMO)	923		578		345		578		0	
DOMINICAN REPUBLIC	9		8		1		8		0	

TABLE P309B

DEPARTMENT OF DEFENSE
 TOTAL CIVILIAN PERSONNEL STRENGTHS BY REGIONAL AREA AND BY COUNTRY
 MILITARY FUNCTIONS - SUMMARY

SEPTEMBER 30, 1984

REGIONAL AREA/COUNTRY	TOTAL		U.S.		FOREIGN		FOREIGN	
	DIRECT HIRE	NATIONALS	DIRECT HIRE	NATIONALS	DIRECT HIRE	NATIONALS	INDIRECT HIRE	NATIONALS
ECUADOR	9	6	3	6	6	0	0	0
EL SALVADOR	6	4	2	4	4	0	0	
GUATEMALA	6	5	1	5	5	0	0	
HAITI	1	1	0	1	1	0	0	
HONDURAS	22	14	8	14	14	0	0	
MEXICO	7	5	2	5	5	0	0	
NETHERLANDS ANTILLES	2	0	2	0	0	0	0	
NICARAGUA	5	5	0	5	5	0	0	
PANAMA	5,765	3,778	1,987	3,778	3,778	0	0	
PARAGUAY	8	6	2	6	6	0	0	
PERU	10	7	3	7	7	0	0	
SURINAME	2	2	0	2	2	0	0	
URUGUAY	6	4	2	4	4	0	0	
VENEZUELA	16	10	6	10	10	0	0	
TOTAL-WESTERN HEMISPHERE	7,483	4,740	2,743	4,740	4,740	0	0	
(6) EASTERN EUROPE								
BULGARIA	2	2	0	2	2	0	0	
CZECHOSLOVAKIA	2	1	1	1	1	0	0	
HUNGARY	3	2	1	2	2	0	0	
POLAND	5	2	3	2	2	0	0	
ROMANIA	4	3	1	3	3	0	0	
UNION OF SOVIET SOCIALIST REPUBLICS	14	8	6	8	8	0	0	
YUGOSLAVIA	5	4	1	4	4	0	0	
TOTAL-EASTERN EUROPE	35	22	13	22	22	0	0	
TOTAL FOREIGN COUNTRIES	81,291	121,574	44,810	121,574	36,481	85,093		
TOTAL WORLDWIDE	1,004,488	121,778	967,807	121,778	36,681	85,097		

NOTE: EXCLUDES SPECIAL EMPLOYMENT CATEGORIES FOR STUDENTS AND DISADVANTAGED YOUTH.

TABLE P309B

DEPARTMENT OF DEFENSE
ARMY CIVILIAN PERSONNEL STRENGTHS BY REGIONAL AREA AND BY COUNTRY
MILITARY FUNCTIONS

SEPTEMBER 30, 1984

REGIONAL AREA/COUNTRY	TOTAL DIRECT HIRE	TOTAL FOREIGN NATIONALS	U.S. CITIZENS		FOREIGN NATIONALS		FOREIGN NATIONALS	
			DIRECT HIRE	INDIRECT HIRE	DIRECT HIRE	INDIRECT HIRE	DIRECT HIRE	INDIRECT HIRE
U. S. TERRITORY AND SPECIAL LOCATIONS								
CONTINENTAL UNITED STATES (CONUS)	295,285	0	295,285	0	0	0	0	0
ALASKA	2,815	0	2,815	0	0	0	0	0
HAWAII	5,028	0	5,028	0	0	0	0	0
GUAM	15	0	15	0	0	0	0	0
JOHNSTON ATOLL	3	0	3	0	0	0	0	0
PUERTO RICO	1,449	0	1,449	0	0	0	0	0
TRUST TERRITORY OF THE PACIFIC ISLANDS	41	0	41	0	0	0	0	0
VIRGIN ISLANDS OF THE U.S.	96	0	96	0	0	0	0	0
TOTAL-U.S. TERR. AND SPECIAL LOCATIONS	304,732	0	304,732	0	0	0	0	0
(1) WESTERN & SOUTHERN EUROPE								
AUSTRIA	3	1	2	1	1	1	0	0
BELGIUM*	304	610	300	4	4	4	606	0
DENMARK*	4	2	2	2	2	2	0	0
FRANCE*	11	5	6	5	5	5	0	0
GERMANY (FED. REPUBLIC & WEST BERLIN)*	20,133	52,297	20,120	13	13	13	52,284	0
GREECE*	19	28	6	13	13	13	15	0
ITALY*	1,348	1,092	256	1,092	1,092	1,092	0	0
LUXEMBOURG*	15	0	15	0	0	0	0	0
NETHERLANDS*	71	298	69	2	2	2	296	0
NORWAY*	3	2	1	2	2	2	0	0
PORTUGAL*	9	7	2	7	7	7	0	0
SPAIN*	15	7	8	7	7	7	0	0
TURKEY*	43	30	13	30	30	30	0	0
UNITED KINGDOM*	627	593	34	593	593	593	0	0
TOTAL-WESTERN & SOUTHERN EUROPE	22,605	54,972	20,834	1,771	1,771	1,771	53,201	0
*NATO COUNTRIES								
(2) EAST ASIA AND PACIFIC								
JAPAN (INCLUDING OKINAWA)	881	3,439	880	1	1	1	3,438	0
PHILIPPINES	1	0	1	0	0	0	0	0
REPUBLIC OF KOREA	11,946	13,960	1,237	10,709	10,709	10,709	3,251	0
TOTAL-EAST ASIA & PACIFIC	12,828	17,399	2,118	10,710	10,710	10,710	6,689	0
(3) AFRICA, NEAR EAST AND SOUTH ASIA								

TABLE P309B
 DEPARTMENT OF DEFENSE
 ARMY CIVILIAN PERSONNEL STRENGTHS BY REGIONAL AREA AND BY COUNTRY
 MILITARY FUNCTIONS

REGIONAL AREA/COUNTRY	SEPTEMBER 30, 1984							
	TOTAL DIRECT HIRE	TOTAL FOREIGN NATIONALS	U.S. CITIZENS DIRECT HIRE	FOREIGN NATIONALS DIRECT HIRE	FOREIGN NATIONALS INDIRECT HIRE	TOTAL FOREIGN NATIONALS	U.S. CITIZENS INDIRECT HIRE	FOREIGN NATIONALS INDIRECT HIRE
EGYPT	12	5	7	5	0	12	0	0
GHANA	1	0	1	0	0	1	0	0
JORDAN	2	1	1	1	0	2	0	0
KENYA	6	3	3	3	0	6	0	0
KUWAIT	1	0	1	0	0	1	0	0
LEBANON	2	2	0	2	0	2	0	0
LIBERIA	3	3	0	3	0	3	0	0
MOROCCO	6	4	2	4	0	6	0	0
NIGERIA	4	2	2	2	0	4	0	0
OMAN	22	1	21	1	0	22	0	0
SAUDI ARABIA	926	156	770	156	0	926	0	0
SOMALIA	1	1	0	1	0	1	0	0
SUDAN	1	1	0	1	0	1	0	0
TUNISIA	4	3	1	3	0	4	0	0
UNITED ARAB EMIRATES	2	2	0	2	0	2	0	0
YEMEN (SANA'A)	4	4	0	4	0	4	0	0
ZAIRE	3	3	0	3	0	3	0	0
TOTAL-AFRICA, NEAR EAST & SOUTH ASIA	1,000	191	809	191	0	1,000	0	0
(4) WESTERN HEMISPHERE								
ARGENTINA	6	6	0	6	0	6	0	0
BOLIVIA	1	0	1	0	0	1	0	0
BRAZIL	7	3	4	3	0	7	0	0
CANADA	14	2	12	2	0	14	0	0
COLOMBIA	10	8	2	8	0	10	0	0
COSTA RICA	4	3	1	3	0	4	0	0
DOMINICAN REPUBLIC	3	3	0	3	0	3	0	0
ECUADOR	5	4	1	4	0	5	0	0
EL SALVADOR	4	3	1	3	0	4	0	0
GUATEMALA	3	3	0	3	0	3	0	0
HONDURAS	19	12	7	12	0	19	0	0
NICARAGUA	2	2	0	2	0	2	0	0
PANAMA	3,929	2,920	1,009	2,920	0	3,929	0	0
PARAGUAY	4	4	0	4	0	4	0	0
PERU	3	3	0	3	0	3	0	0

TABLE P309B

DEPARTMENT OF DEFENSE
ARMY CIVILIAN PERSONNEL STRENGTHS BY REGIONAL AREA AND BY COUNTRY
MILITARY FUNCTIONS

SEPTEMBER 30, 1984

REGIONAL AREA/COUNTRY	TOTAL DIRECT HIRE	TOTAL FOREIGN NATIONALS	U.S.		FOREIGN	
			CITIZENS DIRECT HIRE	CITIZENS INDIRECT HIRE	NATIONALS DIRECT HIRE	NATIONALS INDIRECT HIRE
URUGUAY	5	3	2		3	0
VENEZUELA	7	5	2		5	0
TOTAL-WESTERN HEMISPHERE	4,026	2,984	1,042		2,984	0
(6) EASTERN EUROPE						
UNION OF SOVIET SOCIALIST REPUBLICS	2	0	2		0	0
YUGOSLAVIA	1	1	0		1	0
TOTAL-EASTERN EUROPE	3	1	2		1	0
TOTAL FOREIGN COUNTRIES	40,462	75,547	24,805		15,657	59,890
TOTAL WORLDWIDE	345,194	75,547	329,537		15,657	59,890

NOTE: EXCLUDES SPECIAL EMPLOYMENT CATEGORIES FOR STUDENTS
AND DISADVANTAGED YOUTH.

TABLE P309B

DEPARTMENT OF DEFENSE
NAVY CIVILIAN PERSONNEL STRENGTHS BY REGIONAL AREA AND BY COUNTRY
MILITARY FUNCTIONS

SEPTEMBER 30, 1984

REGIONAL AREA/COUNTRY	TOTAL		TOTAL		U.S.		FOREIGN	
	DIRECT HIRE	FOREIGN NATIONALS	FOREIGN NATIONALS	CITIZENS DIRECT HIRE	DIRECT HIRE	INDIRECT HIRE	DIRECT HIRE	INDIRECT HIRE
U. S. TERRITORY AND SPECIAL LOCATIONS								
CONTINENTAL UNITED STATES (CONUS)	297,420	130	297,290	130	130	0	0	0
ALASKA	158	0	158	0	0	0	0	0
HAWAII	13,223	0	13,223	0	0	0	0	0
GUAM	3,619	40	3,583	36	36	0	0	4
PUERTO RICO	1,140	0	1,140	0	0	0	0	0
TRUST TERRITORY OF THE PACIFIC ISLANDS	18	13	5	13	13	0	0	0
TOTAL-U.S. TERR. AND SPECIAL LOCATIONS	315,578	183	315,399	179	179	0	0	4
(1) WESTERN & SOUTHERN EUROPE								
GERMANY (FED. REPUBLIC & WEST BERLIN)*	9	0	9	0	0	0	0	0
GREECE*	37	0	37	0	0	0	0	0
ICELAND*	849	760	89	760	760	0	0	0
ITALY*	1,369	884	513	856	856	28	0	0
PORTUGAL*	52	44	8	44	44	0	0	0
SPAIN*	223	1,114	223	0	0	1,114	0	0
UNITED KINGDOM*	412	1,257	163	249	249	8	0	0
TOTAL-WESTERN & SOUTHERN EUROPE	2,951	3,059	1,042	1,909	1,909	1,150	0	0
*NATO COUNTRIES								
(2) EAST ASIA AND PACIFIC								
FRENCH POLYNESIA	2	2	0	2	2	0	0	0
AUSTRALIA	210	176	34	176	176	0	0	0
HONG KONG	10	10	0	10	10	0	0	0
INDONESIA	23	19	4	19	19	0	0	0
JAPAN (INCLUDING OKINAWA)	1,058	9,229	1,052	6	6	9,223	0	0
MALAYSIA	1	0	1	0	0	0	0	0
NEW ZEALAND	4	0	4	0	0	0	0	0
PAPUA NEW GUINEA	1	1	0	1	1	0	0	0
PHILIPPINES	10,295	9,847	454	9,841	9,841	6	0	0
REPUBLIC OF KOREA	190	144	46	144	144	0	0	0
SINGAPORE	24	19	5	19	19	0	0	0
THAILAND	19	15	4	15	15	0	0	0
TOTAL-EAST ASIA & PACIFIC	11,837	19,462	1,604	10,233	10,233	9,229	0	0
(3) AFRICA, NEAR EAST AND SOUTH ASIA								

TABLE P309B
 DEPARTMENT OF DEFENSE
 NAVY CIVILIAN PERSONNEL STRENGTHS BY REGIONAL AREA AND BY COUNTRY
 MILITARY FUNCTIONS

SEPTEMBER 30, 1984

REGIONAL AREA/COUNTRY	TOTAL FOREIGN NATIONALS		U.S. CITIZENS		FOREIGN NATIONALS		FOREIGN NATIONALS	
	TOTAL DIRECT HIRE	INDIRECT HIRE	TOTAL DIRECT HIRE	INDIRECT HIRE	TOTAL DIRECT HIRE	INDIRECT HIRE	TOTAL DIRECT HIRE	INDIRECT HIRE
BAHRAIN	32	27	5	27	27	0	27	0
BRITISH INDIAN OCEAN TERRITORY (INCLUDES DIEGO GARCIA)	70	52	18	52	52	0	52	0
EGYPT	189	185	4	185	185	0	185	0
INDIA	6	5	1	5	5	0	5	0
PAKISTAN	7	7	0	7	7	0	7	0
SAUDI ARABIA	16	2	14	2	2	0	2	0
SOMALIA	1	0	1	0	0	0	0	0
TOTAL-AFRICA, NEAR EAST & SOUTH ASIA	321	278	43	278	278	0	278	0
(4) WESTERN HEMISPHERE								
BAHAMAS, THE	14	0	14	0	0	0	0	0
BARBADOS	1	1	0	1	1	0	1	0
BERMUDA	380	111	269	111	111	0	111	0
CANADA	121	116	5	116	116	0	116	0
CUBA (GUANTANAMO)	853	577	276	577	577	0	577	0
DOMINICAN REPUBLIC	3	3	0	3	3	0	3	0
NICARAGUA	1	1	0	1	1	0	1	0
PANAMA	408	328	80	328	328	0	328	0
TOTAL-WESTERN HEMISPHERE	1,781	1,137	644	1,137	1,137	0	1,137	0
TOTAL FOREIGN COUNTRIES	16,890	23,936	3,333	23,936	23,936	0	23,936	0
TOTAL WORLDWIDE	332,468	24,119	318,732	24,119	24,119	0	24,119	0

NOTE: EXCLUDES SPECIAL EMPLOYMENT CATEGORIES FOR STUDENTS AND DISADVANTAGED YOUTH.

TABLE P309B

DEPARTMENT OF DEFENSE
AIR FORCE CIVILIAN PERSONNEL STRENGTHS BY REGIONAL AREA AND BY COUNTRY
MILITARY FUNCTIONS

SEPTEMBER 30, 1984

REGIONAL AREA/COUNTRY	TOTAL		U.S.		FOREIGN	
	DIRECT HIRE	FOREIGN NATIONALS	DIRECT HIRE	CITIZENS	DIRECT HIRE	INDIRECT HIRE
U. S. TERRITORY AND SPECIAL LOCATIONS						
CONTINENTAL UNITED STATES (CONUS)	224,789	0	224,789	0	0	0
ALASKA	1,527	0	1,527	0	0	0
HAWAII	2,076	0	2,076	0	0	0
GUAM	675	0	675	0	0	0
TOTAL-U.S. TERR. AND SPECIAL LOCATIONS	229,067	0	229,067	0	0	0
(1) WESTERN & SOUTHERN EUROPE						
BELGIUM*	22	37	21	5	1	36
DENMARK*	5	5	0	0	5	0
FRANCE*	6	0	6	0	0	0
GERMANY (FED. REPUBLIC & WEST BERLIN)*	2,011	5,877	2,011	0	0	5,877
GREECE*	115	449	97	18	0	431
GREENLAND*	3	0	3	0	0	0
ICELAND*	39	34	5	34	0	0
ITALY*	863	738	125	738	0	0
NETHERLANDS*	66	75	66	0	0	75
NORWAY*	35	34	1	34	0	0
PORTUGAL*	1,016	932	84	932	0	0
SPAIN*	242	807	242	0	0	807
TURKEY*	440	298	142	298	0	0
UNITED KINGDOM*	1,076	1,326	1,039	37	0	1,289
TOTAL-WESTERN & SOUTHERN EUROPE	5,939	10,612	3,842	2,097	0	8,515
*NATO COUNTRIES						
(2) EAST ASIA AND PACIFIC						
AUSTRALIA	3	1	2	1	1	0
INDONESIA	1	0	1	0	0	0
JAPAN (INCLUDING OKINAWA)	677	4,466	677	0	0	4,466
PHILIPPINES	2,761	2,458	303	2,458	0	0
REPUBLIC OF KOREA	1,692	1,576	116	1,576	0	0
THAILAND	2	0	2	0	0	0
TOTAL-EAST ASIA & PACIFIC	5,136	8,501	1,101	4,035	0	4,466
(3) AFRICA, NEAR EAST AND SOUTH ASIA						

TABLE P309B

DEPARTMENT OF DEFENSE
 AIR FORCE CIVILIAN PERSONNEL STRENGTHS BY REGIONAL AREA AND BY COUNTRY
 MILITARY FUNCTIONS

SEPTEMBER 30, 1984

REGIONAL AREA/COUNTRY	TOTAL		U.S.		FOREIGN NATIONALS		FOREIGN NATIONALS	
	DIRECT HIRE	FOREIGN NATIONALS	DIRECT HIRE	CITIZENS	DIRECT HIRE	INDIRECT HIRE	DIRECT HIRE	INDIRECT HIRE
EGYPT	14	0	14	0	0	0	0	0
ISRAEL	5	0	5	0	0	0	0	0
SAUDI ARABIA	59	0	59	0	0	0	0	0
SOMALIA	1	0	1	0	0	0	0	0
SUDAN	4	0	4	0	0	0	0	0
YEMEN (SAMAA)	6	0	6	0	0	0	0	0
ZAIRE	1	0	1	0	0	0	0	0
TOTAL-AFRICA, NEAR EAST & SOUTH ASIA	90	0	90	0	0	0	0	0
(4) WESTERN HEMISPHERE								
CANADA	4	0	4	0	0	0	0	0
COLOMBIA	1	0	1	0	0	0	0	0
PANAMA	665	510	155	0	510	0	0	0
VENEZUELA	1	0	1	0	0	0	0	0
TOTAL-WESTERN HEMISPHERE	671	510	161	0	510	0	0	0
TOTAL FOREIGN COUNTRIES	11,836	19,623	5,194	0	6,642	0	12,981	0
TOTAL WORLDWIDE	240,903	19,623	234,261	0	6,642	0	12,981	0

NOTE: EXCLUDES SPECIAL EMPLOYMENT CATEGORIES FOR STUDENTS AND DISADVANTAGED YOUTH.

TABLE P309B
 DEPARTMENT OF DEFENSE
 OSD-JCS AND OTHER DEFENSE ACTIVITIES
 CIVILIAN PERSONNEL STRENGTHS BY REGIONAL AREA AND BY COUNTRY
 MILITARY FUNCTIONS

SEPTEMBER 30, 1984

REGIONAL AREA/COUNTRY	TOTAL DIRECT HIRE		TOTAL FOREIGN NATIONALS		U.S. CITIZENS		FOREIGN NATIONALS		FOREIGN NATIONALS	
	DIRECT HIRE	INDIRECT HIRE	FOREIGN NATIONALS	INDIRECT HIRE	DIRECT HIRE	INDIRECT HIRE	DIRECT HIRE	INDIRECT HIRE	DIRECT HIRE	INDIRECT HIRE
U. S. TERRITORY AND SPECIAL LOCATIONS										
CONTINENTAL UNITED STATES (CONUS)	73,491		1		73,490		1			
ALASKA	46		0		46		0			
HAWAII	212		0		212		0			
GUAM	22		0		22		0			
PUERTO RICO	47		20		27		20			
TRUST TERRITORY OF THE PACIFIC ISLANDS	2		0		2		0			
TOTAL-U.S. TERR. AND SPECIAL LOCATIONS	73,820		21		73,799		21			
(1) WESTERN & SOUTHERN EUROPE										
AUSTRIA	7		5		2		5			
BELGIUM*	160		23		157		3			
CYPRUS	1		1		0		1			
DENMARK*	8		7		1		7			
FINLAND	3		3		0		3			
FRANCE*	13		7		6		7			
GERMANY (FED. REPUBLIC & WEST BERLIN)*	6,337		1,415		6,332		5		1,410	
GREECE*	80		22		77		3		19	
GREENLAND*	3		0		3		0		0	
ICELAND*	55		7		48		7		0	
IRELAND	1		1		0		1		0	
ITALY*	522		98		424		98		0	
LUXEMBOURG*	1		0		1		0		0	
MALTA	1		1		0		1		0	
NETHERLANDS*	105		26		92		11		15	
NORWAY*	27		7		20		7		0	
PORTUGAL*	81		11		70		11		0	
SPAIN*	330		89		327		3		86	
SWEDEN	3		2		1		2		0	
SWITZERLAND	4		2		2		2		0	
TURKEY*	156		33		123		33		107	
UNITED KINGDOM*	855		120		842		13		107	
TOTAL-WESTERN & SOUTHERN EUROPE	8,751		1,880		8,528		223		1,657	

* NATO COUNTRIES

TABLE P309B

DEPARTMENT OF DEFENSE
OSD-JCS AND OTHER DEFENSE ACTIVITIES
CIVILIAN PERSONNEL STRENGTHS BY REGIONAL AREA AND BY COUNTRY
MILITARY FUNCTIONS

SEPTEMBER 30, 1984

REGIONAL AREA/COUNTRY	TOTAL DIRECT HIRE		TOTAL FOREIGN NATIONALS		U.S. CITIZENS		FOREIGN NATIONALS		FOREIGN NATIONALS	
	TOTAL DIRECT HIRE	INDIRECT HIRE	TOTAL FOREIGN NATIONALS	INDIRECT HIRE	DIRECT HIRE	INDIRECT HIRE	DIRECT HIRE	INDIRECT HIRE	DIRECT HIRE	INDIRECT HIRE
(2) EAST ASIA AND PACIFIC										
AUSTRALIA	4		2		2		2		2	
BURMA	1		1		0		1		1	
CHINA	3		0		3		0		0	
HONG KONG	7		7		0		7		0	
INDONESIA	5		4		1		4		0	
JAPAN (INCLUDING OKINAWA)	1,182		192		1,175		7		185	
MALAYSIA	1		1		0		1		0	
NEW ZEALAND	1		1		0		1		0	
PHILIPPINES	630		102		529		101		1	
REPUBLIC OF KOREA	347		70		277		70		0	
SINGAPORE	5		4		1		4		0	
THAILAND	9		7		2		7		0	
TOTAL-EAST ASIA & PACIFIC	2,195		391		1,990		205		186	
(3) AFRICA NEAR EAST AND SOUTH ASIA										
ALGERIA	2		2		0		2		0	
BAHRAIN	35		13		22		13		0	
BANGLADESH	1		1		0		1		0	
BRITISH INDIAN OCEAN TERRITORY (INCLUDES DIEGO GARCIA)	2		0		2		0		0	
CAMEROON	1		1		0		1		0	
EGYPT	9		5		4		5		0	
GHANA	1		1		0		1		0	
INDIA	5		5		0		5		0	
ISRAEL	4		4		0		4		0	
IVORY COAST	2		2		0		2		0	
JORDAN	3		2		1		2		0	
LEBANON	3		3		0		3		0	
LIBERIA	1		1		0		1		0	
MADAGASCAR	1		1		0		1		0	
MALAWI	1		1		0		1		0	
MOROCCO	3		3		0		3		0	
NEPAL	2		2		0		2		0	
NIGERIA	3		2		1		2		0	

TABLE P309B

DEPARTMENT OF DEFENSE
OSD-JCS AND OTHER DEFENSE ACTIVITIES
CIVILIAN PERSONNEL STRENGTHS BY REGIONAL AREA AND BY COUNTRY
MILITARY FUNCTIONS

SEPTEMBER 30, 1984

REGIONAL AREA/COUNTRY	TOTAL		U.S.		FOREIGN NATIONALS		FOREIGN NATIONALS		
	DIRECT HIRE	FOREIGN NATIONALS	DIRECT HIRE	CITIZENS	DIRECT HIRE	INDIRECT HIRE	DIRECT HIRE	INDIRECT HIRE	
OMAN	1	1	0	0	1	0	0	0	
PAKISTAN	4	4	0	0	4	0	0	0	
SAUDI ARABIA	25	4	21	0	4	0	0	0	
SENEGAL	1	1	0	0	1	0	0	0	
SOUTH AFRICA	3	2	1	0	2	0	0	0	
SRI LANKA	1	1	0	0	1	0	0	0	
SYRIA	1	1	0	0	1	0	0	0	
TUNISIA	1	1	0	0	1	0	0	0	
TURKINIA FASO	1	0	1	0	0	0	0	0	
YEMEN (SAMAA)	1	1	0	0	1	0	0	0	
ZAIRE	2	2	0	0	2	0	0	0	
TOTAL-AFRICA, NEAR EAST & SOUTH ASIA	120	67	53	0	67	67	0	0	
(4) WESTERN HEMISPHERE									
ANTIGUA	4	0	0	0	0	0	0	0	
ARGENTINA	6	4	2	0	4	0	0	0	
BARBADOS	1	1	0	0	1	0	0	0	
BELIZE	1	0	1	0	0	0	0	0	
BERMUDA	36	1	35	0	1	0	0	0	
BOLIVIA	6	3	3	0	3	0	0	0	
BRAZIL	10	7	3	0	7	0	0	0	
CANADA	44	31	13	0	18	0	0	0	
CHILE	6	4	2	0	4	0	0	0	
COLOMBIA	7	5	2	0	5	0	0	0	
COSTA RICA	2	1	1	0	1	0	0	0	
CUBA (GUANTANAMO)	70	1	69	0	1	0	0	0	
DOMINICAN REPUBLIC	3	2	1	0	2	0	0	0	
ECUADOR	4	2	2	0	2	0	0	0	
EL SALVADOR	2	1	1	0	1	0	0	0	
GUATEMALA	3	2	1	0	2	0	0	0	
HAWAII	1	1	0	0	1	0	0	0	
HONDURAS	3	2	1	0	2	0	0	0	
MEXICO	7	5	2	0	5	0	0	0	
NETHERLANDS ANTILLES	2	0	2	0	0	0	0	0	
NICARAGUA	2	2	0	0	2	0	0	0	
PANAMA	763	20	743	0	20	20	0	0	

TABLE P309B

DEPARTMENT OF DEFENSE
OSD-JCS AND OTHER DEFENSE ACTIVITIES
CIVILIAN PERSONNEL STRENGTHS BY REGIONAL AREA AND BY COUNTRY
MILITARY FUNCTIONS

SEPTEMBER 30, 1984

REGIONAL AREA/COUNTRY	TOTAL DIRECT HIRE		TOTAL FOREIGN NATIONALS		U.S. CITIZENS		FOREIGN NATIONALS	
	DIRECT HIRE	INDIRECT HIRE	DIRECT HIRE	INDIRECT HIRE	DIRECT HIRE	INDIRECT HIRE	DIRECT HIRE	INDIRECT HIRE
PARAGUAY	4	2	2	2	2	2	2	0
PERU	7	4	4	3	3	4	4	0
SURINAME	2	2	2	0	0	2	2	0
URUGUAY	1	1	1	0	0	1	1	0
VENEZUELA	8	5	5	3	5	5	5	0
TOTAL-WESTERN HEMISPHERE	1,005	109	109	896	896	109	109	0
(6) EASTERN EUROPE								
BULGARIA	2	2	2	0	0	2	2	0
CZECHOSLOVAKIA	2	1	1	1	1	1	1	0
HUNGARY	3	2	2	1	1	2	2	0
POLAND	5	2	2	3	3	2	2	0
ROMANIA	4	3	3	1	1	3	3	0
UNION OF SOVIET SOCIALIST REPUBLICS	12	8	8	4	4	8	8	0
YUGOSLAVIA	4	3	3	1	1	3	3	0
TOTAL-EASTERN EUROPE	32	21	21	11	11	21	21	0
TOTAL FOREIGN COUNTRIES	12,103	2,468	2,468	11,478	11,478	2,468	625	1,843
TOTAL WORLDWIDE	85,923	2,489	2,489	85,277	85,277	2,489	646	1,843

NOTE: EXCLUDES SPECIAL EMPLOYMENT CATEGORIES FOR STUDENTS AND DISADVANTAGED YOUTH.

S E C T I O N 3

D E P A R T M E N T O F D E F E N S E
D E P E N D E N T S O F
M I L I T A R Y A N D C I V I L I A N P E R S O N N E L

TABLE P14

DEPARTMENT OF DEFENSE
SUMMARY OF DEPENDENTS OF MILITARY & CIVILIAN PERSONNEL

SEPTEMBER 30, 1984

A. TYPE OF DEPENDENTS OF ACTIVE DUTY MILITARY PERSONNEL

DEPENDENT RELATIONSHIP	TOTAL DEPARTMENT OF DEFENSE	ARMY	NAVY	MARINE CORPS	AIR FORCE
SPOUSES	1,149,922	409,598	279,715	83,752	376,857
CHILDREN	1,618,179	651,865	363,314	113,574	489,426
PARENTS	29,118	21,222	3,553	736	3,607
ALL OTHER	54,173	53,902	271	0	0
TOTAL DEPENDENTS	2,851,392	1,136,587	646,853	198,062	869,890

B. LOCATION OF DEPENDENTS OF ACTIVE DUTY MILITARY PERSONNEL

LOCATION	TOTAL DEPARTMENT OF DEFENSE	ARMY	NAVY	MARINE CORPS	AIR FORCE
CONTINENTAL U.S.	2,382,418	914,566	578,028	183,525	706,299
ALASKA	25,614	9,851	1,630	74	14,059
HAWAII	54,190	18,366	19,267	7,618	8,939
U.S. TERRITORIES	15,196	1,049	8,465	241	5,441
FOREIGN COUNTRIES	373,974	192,755	39,463	6,604	135,152
WORLDWIDE	2,851,392	1,136,587	646,853	198,062	869,890

TABLE P14 (concluded)

DEPARTMENT OF DEFENSE
SUMMARY OF DEPENDENTS OF MILITARY & CIVILIAN PERSONNEL

SEPTEMBER 30, 1984

C. DEPENDENTS OF U.S. CITIZENS CIVILIAN EMPLOYEES A/

LOCATION	TOTAL DEPARTMENT OF DEFENSE	ARMY	NAVY	AIR FORCE	OSD-JCS & OTHER DEFENSE ACTIVITIES
ALASKA	606	357	0	234	15
HAWAII	340	158	0	93	89
U.S. TERRITORIES	262	77	0	95	90
FOREIGN COUNTRIES	25,315	19,494	0	5,172	649
ALL LOCATIONS ABOVE	26,523	20,086	0	5,594	843

A/ FOR ALASKA, HAWAII, AND U.S. TERRITORIES, EXCLUDED ARE DEPENDENTS OF CITIZENS WHO ARE EMPLOYED IN THE STATE OR TERRITORY OF THEIR RESIDENCE.

TABLE P309C

DEPARTMENT OF DEFENSE
DEPENDENT STRENGTHS BY REGIONAL AREA AND BY COUNTRY

SEPTEMBER 30, 1984

TOTAL DEPENDENTS OF MILITARY AND CIVILIAN EMPLOYEES

REGIONAL AREA/COUNTRY	TOTAL	ARMY	NAVY	MARINE CORPS	AIR FORCE	OSD AND DEFENSE AGENCIES
U. S. TERRITORY AND SPECIAL LOCATIONS						
CONTINENTAL UNITED STATES (CONUS)	2,382,418	914,566	578,028	183,525	706,299	0
ALASKA	26,220	10,208	1,630	14,293	15	15
HAWAII	54,530	18,524	19,267	7,618	9,032	89
AMERICAN SAMOA	25	12	13	0	0	0
GUAM	11,548	29	5,932	134	5,425	28
PUERTO RICO	3,852	1,068	2,513	107	102	62
TRUST TERRITORY OF THE PACIFIC ISLANDS	3	0	3	0	0	0
VIRGIN ISLANDS OF THE U.S.	25	17	4	0	4	0
WAKE ISLAND	5	0	0	0	5	0
TOTAL-U.S. TERR. & SPECIAL LOCATIONS	2,478,626	944,424	607,390	191,458	735,160	194
(1) WESTERN & SOUTHERN EUROPE						
AUSTRIA	42	15	3	4	6	14
BELGIUM*	3,434	2,139	164	16	1,037	78
CYPRUS	6	4	2	0	0	0
DENMARK*	67	13	17	6	31	0
FINLAND	34	14	5	0	4	11
FRANCE*	136	0	27	10	30	4
GERMANY (FED. REPUBLIC & WEST BERLIN)*	218,952	0	430	82	46,706	213
GIBRALTAR	8	0	3	0	0	0
GREECE*	3,323	0	0	10	2,587	4
ICELAND*	2,041	0	0	24	628	0
IRELAND	63	0	0	3	0	0
ITALY*	16,783	0	0	130	5,187	10
LUXEMBOURG*	20	0	0	2	0	3
NETHERLANDS*	3,620	1,038	21	8	2,552	1
NORWAY*	344	65	50	24	205	0
PORTUGAL*	1,973	35	443	1	1,493	1
SPAIN*	10,395	15	2,805	112	7,461	2
SWEDEN	21	1	2	3	15	0
SWITZERLAND	10	1	2	1	3	3
TURKEY*	3,774	593	25	7	3,149	0
UNITED KINGDOM*	34,288	274	3,452	215	30,332	15
TOTAL-WESTERN & SOUTHERN EUROPE	299,299	180,892	15,962	660	101,426	359

TABLE P308C
DEPARTMENT OF DEFENSE
DEPENDENT STRENGTHS BY REGIONAL AREA AND BY COUNTRY

SEPTEMBER 30, 1984

TOTAL DEPENDENTS OF MILITARY AND CIVILIAN EMPLOYEES

REGIONAL AREA/COUNTRY	TOTAL	ARMY	NAVY	MARINE CORPS	AIR FORCE	OSD AND DEFENSE AGENCIES
*NATO COUNTRIES						
(2) EAST ASIA AND PACIFIC						
AUSTRALIA	844	3	369	5	466	1
BURMA	11	5	0	3	3	0
CHINA	19	8	9	0	2	0
HONG KONG	40	10	15	6	9	0
INDONESIA	62	9	20	5	21	7
JAPAN (INCLUDING OKINAWA)	39,130	4,159	10,140	5,139	19,661	31
MALAYSIA	15	7	6	0	2	0
NEW ZEALAND	93	8	69	0	16	0
PHILIPPINES	21,034	29	8,114	188	12,690	13
REPUBLIC OF KOREA	15,386	13,064	330	79	1,897	16
SINGAPORE	41	4	29	1	6	1
THAILAND	145	71	22	3	48	1
TOTAL-EAST ASIA & PACIFIC	76,820	17,377	19,123	5,429	34,821	70
(3) AFRICA, NEAR EAST AND SOUTH ASIA						
ALGERIA	6	6	0	0	0	0
BAHRAIN	69	0	66	0	3	0
BANGLADESH	2	2	0	0	0	0
CAMEROON	8	5	0	3	0	0
CONGO	5	1	4	0	0	0
EGYPT	109	3	45	10	51	0
ETHIOPIA	1	0	0	1	0	0
GHANA	9	6	0	3	0	0
INDIA	30	3	11	2	14	0
ISRAEL	56	15	6	11	24	0
IVORY COAST	6	4	0	2	0	0
JORDAN	35	28	0	1	6	0
KENYA	21	0	6	12	3	0
KUWAIT	13	0	7	3	3	0
LIBERIA	20	14	1	2	3	0
MADAGASCAR	5	0	5	0	0	0

TABLE P309C
 DEPARTMENT OF DEFENSE
 DEPENDENT STRENGTHS BY REGIONAL AREA AND BY COUNTRY

SEPTEMBER 30, 1984

REGIONAL AREA/COUNTRY	TOTAL DEPENDENTS OF MILITARY AND CIVILIAN EMPLOYEES						OSD AND DEFENSE AGENCIES
	TOTAL	ARMY	NAVY	MARINE CORPS	AIR FORCE		
MALAWI	4	4	0	0	0	0	0
MOROCCO	58	35	6	7	10	0	0
NEPAL	4	1	0	3	0	0	0
NIGER	3	0	0	3	0	0	0
NIGERIA	18	6	2	1	9	0	0
OMAN	9	0	0	7	2	0	0
PAKISTAN	32	8	1	3	20	0	0
ST. HELENA (INCLUDES ASCENSION ISLAND)	3	0	0	0	3	0	0
SAUDI ARABIA	1,567	1,145	53	12	313	44	44
SENEGAL	4	0	0	4	0	0	0
SOMALIA	9	6	0	0	3	0	0
SOUTH AFRICA	34	7	15	5	7	0	0
SRI LANKA	2	0	2	0	0	0	0
SUDAN	10	4	0	2	4	0	0
SYRIA	6	4	0	2	0	0	0
TANZANIA, UNITED REPUBLIC OF	3	0	0	3	0	0	0
TUNISIA	17	7	2	4	4	0	0
UNITED ARAB EMIRATES	1	0	0	0	1	0	0
BURKINA FASO	2	0	0	2	0	0	0
WESTERN SAHARA	1	0	1	0	0	0	0
YEMEN (SANAA)	13	6	0	3	4	0	0
ZAIRE	27	7	0	4	16	0	0
ZAMBIA	4	0	0	4	0	0	0
ZIMBABWE	7	6	0	1	0	0	0
TOTAL-AFRICA, NEAR EAST & SOUTH ASIA	2,233	1,333	233	120	503	44	44
(4) WESTERN HEMISPHERE							
ANTIGUA	79	0	79	0	0	0	0
ARGENTINA	31	13	10	3	5	0	0
BAHAMAS, THE	20	0	18	2	0	0	0
BARBADOS	13	5	2	6	0	0	0
BELIZE	8	8	0	0	0	0	0
BERMUDA	946	0	896	44	0	6	6
BOLIVIA	24	12	1	3	2	1	1
BRAZIL	59	21	19	7	11	1	1
CANADA	721	9	486	6	190	30	30

TABLE P309C

DEPARTMENT OF DEFENSE
DEPENDENT STRENGTHS BY REGIONAL AREA AND BY COUNTRY

SEPTEMBER 30, 1984

REGIONAL AREA/COUNTRY	TOTAL DEPENDENTS OF MILITARY AND CIVILIAN EMPLOYEES					OSD AND DEFENSE AGENCIES
	TOTAL	ARMY	NAVY	MARINE CORPS	AIR FORCE	
CHILE	29	6	8	9	5	1
COLOMBIA	44	16	8	3	12	5
COSTA RICA	18	8	6	2	0	2
CUBA (GUANTANAMO)	2,063	0	1,900	159	0	4
DOMINICAN REPUBLIC	25	8	5	0	8	4
ECUADOR	39	14	9	0	14	2
EL SALVADOR	23	16	0	6	0	1
GRENADA	3	0	0	3	0	0
GUATEMALA	20	11	0	3	3	3
GUYANA	4	0	4	0	0	0
HAITI	6	2	0	3	1	0
HONDURAS	27	14	0	4	9	0
JAMAICA	11	0	6	5	0	0
MEXICO	91	13	54	3	19	2
NETHERLANDS ANTILLES	8	0	7	0	0	1
NICARAGUA	12	8	0	0	4	0
PANAMA	16,237	12,317	569	90	3,190	71
PARAGUAY	26	6	6	0	8	6
PERU	44	11	16	5	11	1
SURINAME	6	6	0	0	0	0
TRINIDAD AND TOBAGO	2	0	2	0	0	0
URUGUAY	23	11	3	5	4	0
VENEZUELA	68	14	5	4	39	6
TOTAL-WESTERN HEMISPHERE	20,730	12,549	4,119	375	3,535	152
(6) EASTERN EUROPE						
BULGARIA	3	0	0	0	3	0
CZECHOSLOVAKIA	11	1	0	0	9	1
GERMAN DEMOCRATIC REPUBLIC	59	55	1	3	0	0
HUNGARY	15	8	4	0	1	2
POLAND	22	4	4	5	4	5
ROMANIA	8	2	0	3	2	1
UNION OF SOVIET SOCIALIST REPUBLICS	63	23	14	7	12	12
YUGOSLAVIA	22	5	3	2	9	3
TOTAL-EASTERN EUROPE	203	98	26	20	35	24

TABLE P309C

DEPARTMENT OF DEFENSE
DEPENDENT STRENGTHS BY REGIONAL AREA AND BY COUNTRY

SEPTEMBER 30, 1984

TOTAL DEPENDENTS OF MILITARY AND CIVILIAN EMPLOYEES

REGIONAL AREA/COUNTRY	TOTAL	ARMY	NAVY	MARINE CORPS	AIR FORCE	OSD AND DEFENSE AGENCIES
(7) UNDISTRIBUTED	4	0	0	0	4	0
TOTAL FOREIGN COUNTRIES	399,289	212,249	39,463	6,604	140,324	649
TOTAL WORLDWIDE	2,877,915	1,156,673	646,853	198,062	875,484	843

NOTE: DEPENDENTS OF CIVILIAN EMPLOYEES EXCLUDES DEPENDENTS OF U.S. CITIZEN CIVILIANS IN ALASKA, HAWAII, AND U.S. TERRITORIES WHO ARE PERMANENT RESIDENTS AND EMPLOYED IN THE STATE OR TERRITORY OF THEIR RESIDENCE.

TABLE P309C

DEPARTMENT OF DEFENSE
DEPENDENT STRENGTHS BY REGIONAL AREA AND BY COUNTRY

SEPTEMBER 30, 1984

DEPENDENTS OF ACTIVE DUTY MILITARY

REGIONAL AREA/COUNTRY	TOTAL	ARMY	NAVY	MARINE CORPS	AIR FORCE
U. S. TERRITORY AND SPECIAL LOCATIONS					
CONTINENTAL UNITED STATES (CONUS)	2,382,418	914,566	578,028	183,525	706,299
ALASKA	25,614	9,851	1,630	1,630	14,059
HAWAII	54,190	18,366	19,267	7,618	8,939
AMERICAN SAMOA	25	12	13	0	0
GUAM	11,425	29	5,932	134	5,330
PUERTO RICO	3,713	991	2,513	107	102
TRUST TERRITORY OF THE PACIFIC ISLANDS	3	0	3	0	0
VIRGIN ISLANDS OF THE U.S.	25	17	4	0	4
WAKE ISLAND	5	0	0	0	5
TOTAL-U.S. TERR. & SPECIAL LOCATIONS	2,477,418	943,832	607,390	191,458	734,738
(1) WESTERN & SOUTHERN EUROPE					
AUSTRIA	28	15	3	4	6
BELGIUM*	3,088	1,897	164	16	1,011
CYPRUS	6	4	0	2	0
DENMARK*	67	13	17	6	31
FINLAND	23	14	5	0	4
FRANCE*	118	60	27	10	21
GERMANY (FED. REPUBLIC & WEST BERLIN)*	207,096	161,083	430	82	45,501
GIBRALTAR	8	0	8	0	0
GREECE*	3,245	392	335	10	2,508
ICELAND*	2,041	0	1,389	24	628
IRELAND	23	7	13	3	0
ITALY*	16,293	4,345	6,771	130	5,047
LUXEMBOURG*	2	0	0	2	0
NETHERLANDS*	3,439	916	21	8	2,494
NORWAY*	344	65	50	24	205
PORTUGAL*	1,874	34	443	1	1,396
SPAIN*	9,909	15	2,805	112	6,977
SWEDEN	21	1	2	3	15
SWITZERLAND	7	1	2	1	3
TURKEY*	3,637	593	25	7	3,012
UNITED KINGDOM*	33,366	254	3,452	215	29,445
TOTAL-WESTERN & SOUTHERN EUROPE	284,635	169,709	15,962	660	98,304

TABLE P309C

DEPARTMENT OF DEFENSE
DEPENDENT STRENGTHS BY REGIONAL AREA AND BY COUNTRY

SEPTEMBER 30, 1984

DEPENDENTS OF ACTIVE DUTY MILITARY

REGIONAL AREA/COUNTRY	TOTAL	ARMY	NAVY	MARINE CORPS	AIR FORCE
*NATO COUNTRIES					
(2) EAST ASIA AND PACIFIC					
AUSTRALIA	841	3	369	5	464
BURMA	11	5	0	3	3
CHINA	19	8	9	0	2
HONG KONG	40	10	15	6	9
INDONESIA	55	9	20	5	21
JAPAN (INCLUDING OKINAWA)	37,027	3,109	10,140	5,139	18,639
MALAYSIA	15	7	6	0	2
NEW ZEALAND	93	8	69	0	16
PHILIPPINES	20,408	29	8,114	188	12,077
REPUBLIC OF KOREA	13,398	11,285	330	79	1,704
SINGAPORE	39	4	29	1	5
THAILAND	140	71	22	3	44
TOTAL-EAST ASIA & PACIFIC	72,086	14,548	19,123	5,429	32,986
(3) AFRICA, NEAR EAST AND SOUTH ASIA					
ALGERIA	6	6	0	0	0
BAHRAIN	69	0	66	0	3
BANGLADESH	2	2	0	0	0
CAMEROON	8	5	0	3	0
CONGO	5	1	4	0	0
EGYPT	101	3	45	10	43
ETHIOPIA	1	0	0	1	0
GHANA	9	6	0	3	0
INDIA	30	3	11	2	14
ISRAEL	56	15	6	11	24
IVORY COAST	6	4	0	2	0
JORDAN	35	28	0	1	6
KENYA	21	0	6	12	3
KUWAIT	13	0	7	3	3
LIBERIA	20	14	1	2	3
MADAGASCAR	5	0	5	0	0

TABLE P309C

DEPARTMENT OF DEFENSE
DEPENDENT STRENGTHS BY REGIONAL AREA AND BY COUNTRY

SEPTEMBER 30, 1984

DEPENDENTS OF ACTIVE DUTY MILITARY

REGIONAL AREA/COUNTRY	TOTAL	ARMY	NAVY	MARINE CORPS	AIR FORCE
MALAWI	4	4	0	0	0
MOROCCO	58	35	6	7	10
NEPAL	4	1	0	3	0
NIGER	3	0	0	3	0
NIGERIA	18	6	2	1	9
OMAN	19	0	0	7	2
PAKISTAN	32	8	1	3	20
ST. HELENA (INCLUDES ASCENSION ISLAND)	3	0	0	0	3
SAUDI ARABIA	460	142	53	12	253
SENEGAL	4	0	0	4	0
SOMALIA	6	6	0	0	0
SOUTH AFRICA	34	7	15	5	7
SRI LANKA	2	0	2	0	0
SUDAN	7	4	0	2	1
SYRIA	6	4	0	2	0
TANZANIA, UNITED REPUBLIC OF	3	0	0	3	0
TUNISIA	17	7	2	4	4
UNITED ARAB EMIRATES	1	0	0	0	1
BURKINA FASO	2	0	0	2	0
WESTERN SAHARA	1	0	1	0	0
YEMEN (SANAA)	9	6	0	3	0
ZAIRE	27	7	0	4	16
ZAMBIA	4	0	0	4	0
ZIMBABWE	7	6	0	1	0
TOTAL-AFRICA, NEAR EAST & SOUTH ASIA	1,108	330	233	120	425
(4) WESTERN HEMISPHERE					
ANTIGUA	79	0	79	0	0
ARGENTINA	31	13	10	3	5
BAHAMAS, THE	20	2	18	2	0
BARBADOS	13	5	2	6	0
BELIZE	8	8	0	0	0
BERMUDA	940	0	896	44	0
BOLIVIA	18	12	1	3	2
BRAZIL	58	21	19	7	11
CANADA	689	9	486	6	188

TABLE P309C

DEPARTMENT OF DEFENSE
DEPENDENT STRENGTHS BY REGIONAL AREA AND BY COUNTRY

SEPTEMBER 30, 1984

DEPENDENTS OF ACTIVE DUTY MILITARY

REGIONAL AREA/COUNTRY	TOTAL	ARMY	NAVY	MARINE CORPS	AIR FORCE
CHILE	28	6	8	9	5
COLOMBIA	39	16	8	3	12
COSTA RICA	16	0	6	2	0
CUBA (GUANTANAMO)	2,059	0	1,900	159	0
DOMINICAN REPUBLIC	21	8	5	0	8
ECUADOR	37	14	9	0	14
EL SALVADOR	22	16	0	6	0
GRENADA	3	0	0	3	0
GUATEMALA	17	11	0	3	3
GUYANA	4	0	4	0	0
HAITI	6	2	0	3	1
HONDURAS	27	14	0	4	9
JAMAICA	11	0	6	5	0
MEXICO	89	13	54	3	19
NETHERLANDS ANTILLES	7	0	7	0	0
NICARAGUA	12	8	0	0	4
PANAMA	11,557	7,843	569	90	3,055
PARAGUAY	20	6	6	0	8
PERU	43	11	16	5	11
SURINAME	6	0	0	0	0
TRINIDAD AND TOBAGO	2	0	2	0	0
URUGUAY	23	11	3	5	4
VENEZUELA	62	14	5	4	39
TOTAL-WESTERN HEMISPHERE	15,967	8,075	4,119	375	3,398
(6) EASTERN EUROPE					
BULGARIA	3	0	0	0	3
CZECHOSLOVAKIA	10	1	0	0	9
GERMAN DEMOCRATIC REPUBLIC	59	55	1	3	0
HUNGARY	13	8	4	0	1
POLAND	17	4	4	5	4
ROMANIA	7	2	0	3	2
UNION OF SOVIET SOCIALIST REPUBLICS	46	18	14	7	7
YUGOSLAVIA	19	5	3	2	9
TOTAL-EASTERN EUROPE	174	93	26	20	35

TABLE P309C

DEPARTMENT OF DEFENSE
DEPENDENT STRENGTHS BY REGIONAL AREA AND BY COUNTRY

SEPTEMBER 30, 1984

DEPENDENTS OF ACTIVE DUTY MILITARY

REGIONAL AREA/COUNTRY	TOTAL	ARMY	NAVY	MARINE CORPS	AIR FORCE
(7) UNDISTRIBUTED	4	0	0	0	4
MILITARY DEPENDENTS IN FOREIGN COUNTRIES					
COMMAND SPONSORED	348,365	177,252	35,968	2,886	132,259
NON-COMMAND SPONSORED	25,609	15,503	3,495	3,718	2,893
TOTAL-FOREIGN COUNTRIES	373,974	192,755	39,463	6,604	135,152
TOTAL WORLDWIDE	2,851,392	1,136,587	646,853	198,062	869,890

TABLE P309C

DEPARTMENT OF DEFENSE
DEPENDENT STRENGTHS BY REGIONAL AREA AND BY COUNTRY

SEPTEMBER 30, 1984

DEPENDENTS OF U.S. CITIZEN CIVILIAN EMPLOYEES

REGIONAL AREA/COUNTRY	TOTAL	ARMY	NAVY	AIR FORCE	OSD AND DEFENSE AGENCIES
U. S. TERRITORY AND SPECIAL LOCATIONS					
ALASKA	606	357	0	234	15
HAWAII	340	158	0	93	89
GUAM	123	0	0	95	28
PUERTO RICO	139	77	0	0	62
TOTAL-U.S. TERR. & SPECIAL LOCATIONS	1,208	592	0	422	194
(1) WESTERN & SOUTHERN EUROPE					
AUSTRIA	14	0	0	0	14
BELGIUM*	346	242	0	26	78
FINLAND	11	0	0	0	11
FRANCE*	18	5	0	9	4
GERMANY (FED. REPUBLIC & WEST BERLIN)*	11,856	10,438	0	1,205	213
GREECE*	83	0	0	4	4
ITALY*	490	340	0	140	10
LUXEMBOURG*	18	15	0	0	3
NETHERLANDS*	181	122	0	58	1
PORTUGAL*	99	1	0	97	1
SPAIN*	486	0	0	484	2
SWITZERLAND	3	0	0	0	3
TURKEY*	137	0	0	137	0
UNITED KINGDOM*	922	20	0	887	15
TOTAL-WESTERN & SOUTHERN EUROPE	14,664	11,183	0	3,122	359
*NATO COUNTRIES					
(2) EAST ASIA AND PACIFIC					
AUSTRALIA	3	0	0	2	1
INDONESIA	7	0	0	0	7
JAPAN (INCLUDING OKINAWA)	2,103	1,050	0	1,022	31
PHILIPPINES	626	0	0	613	13
REPUBLIC OF KOREA	1,988	1,779	0	193	16
SINGAPORE	2	0	0	1	1
THAILAND	5	0	0	4	1

TABLE P308C

DEPARTMENT OF DEFENSE
DEPENDENT STRENGTHS BY REGIONAL AREA AND BY COUNTRY

SEPTEMBER 30, 1984

DEPENDENTS OF U.S. CITIZEN CIVILIAN EMPLOYEES

REGIONAL AREA/COUNTRY	TOTAL	ARMY	NAVY	AIR FORCE	OSD AND DEFENSE AGENCIES
TOTAL-EAST ASIA & PACIFIC	4,734	2,829	0	1,835	70
(3) AFRICA, NEAR EAST AND SOUTH ASIA					
EGYPT	8	0	0	8	0
SAUDI ARABIA	1,107	1,003	0	60	44
SOMALIA	3	0	0	3	0
SUDAN	3	0	0	3	0
YEMEN (SANA'A)	4	0	0	4	0
TOTAL-AFRICA, NEAR EAST & SOUTH ASIA	1,125	1,003	0	78	44
(4) WESTERN HEMISPHERE					
BERMUDA	6	0	0	0	6
BOLIVIA	6	0	0	0	6
BRAZIL	1	0	0	0	1
CANADA	32	0	0	2	30
CHILE	1	0	0	0	1
COLOMBIA	5	0	0	0	5
COSTA RICA	2	0	0	0	2
CUBA (GUANTANAMO)	4	0	0	0	4
DOMINICAN REPUBLIC	4	0	0	0	4
ECUADOR	2	0	0	0	2
EL SALVADOR	1	0	0	0	1
GUATEMALA	3	0	0	0	3
MEXICO	2	0	0	0	2
NETHERLANDS ANTILLES	1	0	0	0	1
PANAMA	4,680	4,474	0	135	71
PARAGUAY	6	0	0	0	6
PERU	1	0	0	0	1
VENEZUELA	6	0	0	0	6
TOTAL-WESTERN HEMISPHERE	4,763	4,474	0	137	152
(6) EASTERN EUROPE					
CZECHOSLOVAKIA	1	0	0	0	1
HUNGARY	2	0	0	0	2
POLAND	5	0	0	0	5

TABLE P309C

DEPARTMENT OF DEFENSE
DEPENDENT STRENGTHS BY REGIONAL AREA AND BY COUNTRY

SEPTEMBER 30, 1984

DEPENDENTS OF U.S. CITIZEN CIVILIAN EMPLOYEES

REGIONAL AREA/COUNTRY	TOTAL	ARMY	NAVY	AIR FORCE	OSD AND DEFENSE AGENCIES
ROMANIA	1	0	0	0	1
UNION OF SOVIET SOCIALIST REPUBLICS	17	5	0	0	12
YUGOSLAVIA	3	0	0	0	3
TOTAL-EASTERN EUROPE	29	5	0	0	24
TOTAL FOREIGN COUNTRIES	25,315	19,494	0	5,172	649
TOTAL WORLDWIDE	26,523	20,086	0	5,594	843

NOTE: DEPENDENTS OF CIVILIAN EMPLOYEES EXCLUDES DEPENDENTS OF U.S. CITIZEN CIVILIANS IN ALASKA, HAWAII, AND U.S. TERRITORIES WHO ARE PERMANENT RESIDENTS AND EMPLOYED IN THE STATE OR TERRITORY OF THEIR RESIDENCE.

G L O S S A R Y O F T E R M S

Active Duty. Full-time duty in the active service of a uniformed service, including duty on the active list, full-time training duty, annual training duty, and attendance while in the active service, at a school designated as a service school or by law or by the Secretary concerned.

Actual Strength. The number of personnel in, or projected to be in, an organization or account at a specified point in time.

Assigned Strength. Actual strength of an entire service, not necessarily equal to combined unit actual strengths since individuals may be assigned but not joined.

Authorized Strength. The total strength authorized by Congress (for internal Service applications only).

Continental United States. Unless otherwise qualified, means the 48 contiguous States and the District of Columbia.

Direct Hire Civilians. Employees hired directly by an agency of the Department of Defense. Included are foreign nationals hired by the Department of Defense to support DoD activities in their home countries.

Indirect Hire Civilians. Foreign nationals assigned to support U.S. forces through contracts or agreements with foreign governments (or agencies thereof). These personnel are employees of the foreign governments involved.

Military Afloat. Navy and Marine Corps military personnel aboard ship. Also includes Navy and Marine Corps military personnel who are assigned to afloat and mobile units, such as aircraft squadrons, construction battalions, and fleet and air command staffs, and who are aboard ship.

Military Functions. Activities normally associated with the uniform services.

Military Temporarily Shore-Based. Navy and Marine Corps military personnel assigned to afloat and mobile units, such as aircraft squadrons, construction battalions, and fleet and air command staffs, and who are temporarily based ashore for a period that will exceed 30 days.

Operating Location. Operating Location is defined as the geographic location where military or civilian employees of the Department of Defense are physically located for the performance of duties.

Other Defense Agencies.

USD and Related Activities

OSU-JCS = Office of the Secretary of Defense and Organization of the Joint Chiefs of Staff
AFIS = American Forces Information Service
CHAMPUS = Civilian Health and Medical Program of the Uniform Services
DARPA = Defense Advanced Research Projects Agency
DSAA = Defense Security Assistance Agency
TRIMIS = Tri-Service Medical Information System
USCIMA = U.S. Court of Military Appeals
UEA = Office of Economic Adjustment
WHS = Washington Headquarters Services
ULS = Defense Legal Services

Defense Audiovisual Agency
Defense Audit Service
Defense Communications Agency
Defense Contract Audit Agency
Defense Intelligence Agency
Defense Investigative Agency
Defense Logistics Agency
Defense Mapping Agency
Defense Nuclear Agency
Department of Defense Dependents Schools
Uniform Services University of the Health Sciences

Recorded Duty Station. Actual physical location where active duty military personnel perform duty on a permanent basis.

Transients. All military members who are not available for duty while executing permanent change of station (PCS) orders. Transients shall comprise all military personnel in a travel, proceed, leave enroute, or temporary duty enroute status on PCS orders to execute an accession, separation, training, operational, or rotational move.