

AD-A149 019

CIVILIAN MANPOWER STATISTICS SEPTEMBER 1984 FV-84(U)
WASHINGTON HEADQUARTERS SERVICES (DOD) DC DIRECTORATE
FOR INFORMATION OPERATIONS AND REPORTS SEP 84
DIOR/M04-84/12

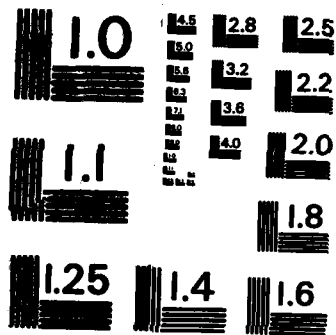
1/1

UNCLASSIFIED

F/G 5/9

NL





MICROCOPY RESOLUTION TEST CHART
 NATIONAL BUREAU OF STANDARDS-1963-A

12

M04

DIRY mo4-84/a

Department of Defense CIVILIAN MANPOWER STATISTICS

SEPTEMBER 1984



STATISTIC
ELECTE
JAN 3 1985
S D



AD-A149 019

DTIC FILE COPY

DISTRIBUTION STATEMENT A
Approved for public release
Distribution Unlimited

* Accession For	
NTIS GRA&I	<input checked="" type="checkbox"/>
DTIC TAB	<input type="checkbox"/>
Unannounced	<input type="checkbox"/>
Justification	
By	
Distribution/	
Availability Codes	
Avail and/or	
Special	
Dist	01



Department of Defense Civilian Manpower Statistics

Issued Quarterly by

Directorate for Information
Operations and Reports (DIOR)
The Pentagon, Washington, D.C.



DTIC
ELECTE
S
JAN 3 1985
D
D

FOREWORD

↖ *Civilian Manpower Statistics* (CMS) is a quarterly publication prepared by the Washington Headquarters Services, Directorate for Information Operations and Reports (WHS/DIOR) of the Office of the Secretary of Defense.

CMS provides statistical information on the civilian work force of the Department of Defense (DOD), with the exception of personnel of the National Security Agency and personnel paid from non-appropriated funds. It is produced primarily from a computerized data base developed and maintained by WHS/DIOR from monthly information provided to the Office of Personnel Management on SF 113-A, Monthly Report of Federal Civilian Employment.

↑

T A B L E O F C O N T E N T S

<u>Table</u>		<u>Page</u>
1	DOD Civilian Employment, by Function and Employment Status, According to Defense Component: September 30, 1984	1
2	Trends in DOD Civilian Employment Subject to OMB Ceiling, by Function, Employment Status, and Defense Component	2
3	DOD Direct Hire Civilian Personnel Subject to OMB Ceiling, by Function and Defense Component	3
4	DOD Direct and Indirect Hire Civilian Personnel, by Component (Excluding the Military Departments), According to Type: September 30, 1984	4
5	DOD Direct Hire Civilian Personnel, by Type, According to Defense Component: September 30, 1984	5
6	DOD Civilian Personnel, by Location and Type, According to Defense Component: September 30, 1984	6
7	DOD Indirect Hire Civilian Personnel, by Country, According to Defense Component: September 30, 1984	7
	Glossary	8

TABLE 1

DoD Civilian Employment, by Function and Employment Status,
According to Defense Component: September 30, 1984

FUNCTION/EMPLOYMENT STATUS	TOTAL DOD a/	ARMY	NAVY b/	AIR FORCE	OTHER DEFENSE ACTIVITIES c/
MILITARY FUNCTIONS					
OMB Ceiling Employment	1,089,585	405,084	342,851	253,884	87,766
Direct Hire	1,004,488	345,194	332,468	240,903	85,923
Indirect Hire	85,097	59,890	10,383	12,981	1,843
Total Employment	1,099,100	407,109	347,596	255,601	88,794
Direct Hire	1,014,003	347,219	337,213	242,620	86,951
Indirect Hire	85,097	59,890	10,383	12,981	1,843
CIVIL FUNCTIONS (ALL DIRECT HIRE)					
OMB Ceiling Employment	28,974	28,972	0	2	0
Total Employment	29,744	29,742	0	2	0
TOTAL MILITARY AND CIVIL FUNCTIONS					
OMB Ceiling Employment	1,118,559	434,056	342,851	253,886	87,766
Direct Hire	1,033,462	374,166	332,468	240,905	85,923
Indirect Hire	85,097	59,890	10,383	12,981	1,843
Total Employment	1,128,844	436,851	347,596	255,603	88,794
Direct Hire	1,043,747	376,961	337,213	242,622	86,951
Indirect Hire	85,097	59,890	10,383	12,981	1,843

a/ Included in Total Employment but excluded from Office of Management and Budget (OMB) Ceiling Employment are employees exempt from OMB ceiling control. Refer to Office of Personnel Management Federal Personnel Manual System Supplement 298-2, Subchapter 53, for a delineation of employment exempt from ceiling control.

b/ Includes Marine Corps civilian personnel.

c/ See the Glossary for a list of the Other Defense Activities.

TABLE 2

Trends in DOD Civilian Employment Subject to OMB Ceiling,
By Function, Employment Status, and Defense Component

FUNCTION/COMPONENT EMPLOYMENT STATUS	END STRENGTHS, LAST 4 FISCAL YEARS				LAST 3 MONTHS		
	30 SEP 80	30 SEP 81	30 SEP 82	30 SEP 83	31 JUL 84	31 AUG 84	30 SEP 84
MILITARY FUNCTIONS	990,356	1,019,466	1,029,854	1,067,824	1,115,459	1,113,496	1,089,585
DIRECT HIRE ^{a/}	915,786	939,942	947,061	983,644	1,029,819	1,027,743	1,004,488
INDIRECT HIRE ^{b/}	74,570	79,524	82,793	84,180	85,640	85,753	85,097
ARMY	360,508	372,111	379,316	392,346	422,795	419,145	405,084
DIRECT HIRE	311,795	318,278	322,057	333,722	362,812	359,136	345,194
INDIRECT HIRE	48,713	53,833	57,259	58,624	59,983	60,009	59,890
NAVY	308,715	320,858	319,554	339,552	349,194	348,228	342,851
DIRECT HIRE	297,984	310,123	308,885	328,907	338,605	337,567	332,468
INDIRECT HIRE	10,731	10,735	10,669	10,645	10,589	10,661	10,383
AIR FORCE	244,342	246,165	248,508	252,330	264,548	259,621	253,884
DIRECT HIRE	230,938	232,933	235,456	239,367	251,293	246,377	240,903
INDIRECT HIRE	13,404	13,232	13,052	12,963	13,255	13,244	12,981
OTHER DEFENSE ACTIVITIES	76,791	80,332	82,476	83,596	78,922	86,502	87,766
DIRECT HIRE	75,069	78,608	80,663	81,648	77,109	84,663	85,923
INDIRECT HIRE	1,722	1,724	1,813	1,948	1,813	1,839	1,843
CIVIL FUNCTIONS ^{a/} (ALL DIRECT HIRE)	32,611	31,800	31,573	32,823	30,585	30,706	28,974
Army	32,608	31,798	31,569	32,819	30,583	30,704	28,972
Air Force	3	4	4	4	2	2	2
TOTAL MILITARY AND CIVIL FUNCTIONS	1,022,967	1,051,266	1,061,427	1,100,647	1,146,044	1,144,202	1,118,559
DIRECT HIRE ^{a/}	948,397	971,742	978,634	1,016,467	1,060,404	1,058,449	1,033,462
INDIRECT HIRE ^{b/}	74,570	79,524	82,793	84,180	85,640	85,753	85,097

a/ As reported officially to the Office of Personnel Management

b/ Foreign Nationals supporting U.S. Military Forces overseas under contracts or agreements with foreign governments

TABLE 3

DOD Direct Hire Civilian Personnel Subject to OMB Ceiling,
by Function and Defense Component

FUNCTION/COMPONENT	TOTAL EMPLOYMENT			FULL-TIME WITH PERMANENT APPOINTMENTS		
	31 JUL 84	31 AUG 84	30 SEP 84	31 JUL 84	31 AUG 84	30 SEP 84
MILITARY FUNCTIONS	1,029,819	1,027,743	1,004,488	889,225	896,700	899,901
Army	362,812	359,136	345,194	297,365	298,590	299,787
Navy	338,605	337,567	332,468	297,691	297,257	299,107
Air Force	251,293	246,377	240,907	222,601	222,603	222,041
OSD & Related Activities a/	3,722	3,637	3,559	3,416	3,410	3,459
Defense Audiovisual Agency	259	253	264	221	220	230
Defense Communications Agency	1,797	1,777	1,794	1,666	1,672	1,671
Defense Contract Audit Agency	3,997	4,000	4,162	3,904	3,934	4,105
Defense Intelligence Agency	2,999	3,014	3,019	2,665	2,670	2,694
Defense Investigative Service	3,243	3,241	3,262	3,214	3,199	3,194
Defense Logistics Agency	48,210	48,296	48,349	45,542	45,726	45,934
Defense Mapping Agency	8,908	8,840	8,775	8,687	8,661	8,668
Defense Nuclear Agency	704	692	687	617	623	627
Department of Defense	2,495	10,165	11,267	995	7,487	7,727
Dependent's Schools						
Uniformed Services University of the Health Sciences	775	748	785	641	648	657
CIVIL FUNCTIONS	30,585	30,706	28,974	26,303	26,567	26,279
Army	30,583	30,704	28,972	26,301	26,565	26,277
Air Force	2	2	2	2	2	2
TOTAL MILITARY AND CIVIL FUNCTIONS	1,060,404	1,058,449	1,033,462	915,528	923,267	926,180

a/ See the Glossary for a list of OSD and Related Activities.

TABLE 4

DOD Direct and Indirect Hire Civilian Personnel by Component,
According to Type (Excluding the Military Departments)

30 SEP 84

DEFENSE COMPONENT	TOTAL	DIRECT HIRE CIVILIANS	INDIRECT HIRE CIVILIANS
TOTAL	86,794	86,951	1,843
OSD And Related Activities	3,598	3,585	13
Defense Audiovisual Agency	269	269	0
Defense Communications Agency	1,860	1,850	10
Defense Contract Audit Agency	4,206	4,201	5
Defense Intelligence Agency	3,019	3,019	0
Defense Investigative Service	3,298	3,298	0
Defense Logistics Agency	50,025	49,124	901
Defense Mapping Agency	8,857	8,856	1
Defense Nuclear Agency	697	697	0
Department of Defense Dependents Schools	12,180	11,267	913
Uniformed Services University of the Health Sciences	785	785	0

TABLE 5

DOD Direct Hire Civilian Personnel, by Type
According to Defense Component September 30, 1984

TYPE OF PERSONNEL	TOTAL DOD	ARMY	NAVY	AIR FORCE	OTHER DEFENSE ACTIVITIES a/
TOTAL	1,043,747	376,961	337,213	242,622	86,951
BY STATUS					
Full-Time	1,017,848	366,424	330,892	236,994	83,538
Part-Time	22,220	8,441	5,978	4,803	2,998
Intermittent	3,679	2,096	343	825	415
BY CAREER SERVICE CATEGORY					
Competitive	870,067	302,441	296,659	202,746	68,221
Excepted and SES	173,680	74,520	40,554	39,876	18,730
BY TYPE OF APPOINTMENT					
Permanent	938,228	331,430	301,889	225,016	79,893
Temporary/Indefinite	105,519	45,531	35,324	17,606	7,058
BY CITIZENSHIP					
U.S. Citizens	1,006,594	360,936	323,429	235,969	86,260
Non-Citizens	37,153	16,025	13,784	6,653	691
BY LABOR CATEGORY					
Salaries	691,970	263,525	198,355	154,242	75,848
Wage Board	351,777	113,436	138,858	88,380	11,103

a/ See the Glossary for a list of the other Defense Agencies

TABLE 6

DoD Direct Hire Civilian Personnel, by Location Type,
According to Defense Component: September 30, 1984 a/

LOCATION/TYPE OF PERSONNEL	TOTAL DOD	ARMY	NAVY	AIR FORCE	OTHER DEFENSE ACTIVITIES b/
WORLDWIDE TOTAL	1,043,747	376,961	337,213	242,622	86,951
UNITED STATES	954,817	334,796	315,430	229,824	74,767
By Location Washington, D.C. SMSA c/ Remainder of U. S.	86,832 867,985	28,107 306,689	36,785 278,645	6,270 223,554	15,670 59,097
By Labor Category Salaried Wage Board	635,820 318,997	241,143 93,653	188,212 127,218	142,648 87,176	63,817 10,950
By Citizenship U. S. Citizens Non-Citizens	954,201 616	334,429 367	315,253 177	229,798 26	74,721 46
U. S. TERRITORIES	7,018	1,122	4,890	951	55
By Labor Category Salaried Wage Board	3,439 3,579	748 374	2,242 2,648	408 543	41 14
By Citizenship U. S. Citizens Non-Citizens	6,967 51	1,121 1	4,840 50	951 0	55 0
FOREIGN COUNTRIES	81,912	41,043	16,893	11,847	12,129
By Labor Category Salaried Wage Board	52,711 29,201	21,634 19,409	7,901 8,992	11,186 661	11,990 139
By Citizenship U. S. Citizens Non-Citizens	45,426 36,486	25,386 15,657	3,336 13,557	5,220 6,627	11,484 6,645

a/ Includes personnel not subject to Office of Management and Budget (OMB) ceiling control.

b/ See the Glossary for a list of the Other Defense Activities.

c/ The Washington, D.C., Standard Metropolitan Statistical Area (SMSA) consists of the District of Columbia; Montgomery, Prince Georges, Charles, Calvert and Frederick counties in Maryland; Alexandria, Fairfax Falls Church, Manassas, and Manassas Park cities, and Arlington, Fairfax, Loudoun, Stafford, and Prince William counties in Virginia.

TABLE 7

DoD Indirect Hire Civilian Personnel, by Country,
According to Defense Component: September 30, 1984

COUNTRY	TOTAL DOD	ARMY	NAVY	AIR FORCE	OTHER DEFENSE ACTIVITIES a/
TOTAL	85,097	59,890	10,383	12,981	1,843
BELGIUM	662	606	0	36	20
GERMANY	59,571	52,284	0	5,877	1,410
GREECE	465	15	0	431	19
GUAM	4	0	4	0	0
ITALY	28	0	28	0	0
JAPAN	17,312	3,438	9,223	4,466	185
KOREA	3,251	3,251	0	0	0
NETHERLANDS	386	296	0	75	15
PHILIPPINES	7	0	6	0	1
SPAIN	2,007	0	1,114	807	86
UNITED KINGDOM	1,404	0	8	1,289	107

a/ See the Glossary for a list of the Other Defense Activities

G L O S S A R Y

Civil Functions. Functions primarily associated with the Civil Works program of the Army Corps of Engineers. This program encompasses planning, programming, designing, constructing, and operating federal water resource projects for navigation, flood control, hydroelectric power, water supply, recreation, and related activities. Civil Functions also includes cemetery workers (Army) and several conservation management employees (Air Force).

Competitive Service. All civil service positions in the Executive Branch, except:

1. Positions which are specifically exempted from the Competitive Service by or under statute;
2. Positions to which appointments are made by nomination for confirmation by the Senate, unless the Senate otherwise directs or when specifically included in the Competitive Service by statute;
3. Positions in the Senior Executive Service.

Also includes civil service positions not in the Executive Branch which are specifically included in the Competitive Service by statute.

Direct Hire Civilians. Employees hired directly by an agency of Department of Defense. Included are foreign nationals hired by Department of Defense to support Department of Defense activities in their home countries.

DOD. Department of Defense.

Excepted Service. All positions in the Executive Branch of the Federal government (except Senior Executive Service positions) which are specifically excepted from the Competitive Service by or pursuant to a statute, the President, or the Office of Personnel Management.

Full-Time Employees. Employees who are regularly scheduled to work the number of hours and days in the administrative workweek for their employment group or class. (Usually 5 days of 8 hours each.)

Indirect Hire Civilians. Foreign nationals assigned to support U.S. Forces through contracts or agreements with foreign governments (or agencies thereof). These personnel are employees of the foreign governments involved.

Intermittent Employees. Employees who are employed with no prescheduled tour of duty (i.e., employed on an irregular or occasional basis).

Military Functions. Activities normally associated with the uniformed services.

OMB Ceiling Employment. Employees subject to Office of Management and Budget (OMB) ceilings established to administer Presidential employment ceiling limitations. Refer to Office of Personnel Management Federal Personnel Manual System Supplement 298-2, Subchapter 53, for a delineation of employment exempt from ceiling control.

OSD and Related Activities.

American Forces Information Service (AFIS)
Civilian Health and Medical Program
of the Uniformed Services (CHAMPUS)
Defense Advanced Research Projects Agency (DARPA)
Defense Legal Services (DLS)
Defense Security Assistance Agency (DSAA)
Office of Economic Adjustment (OEA)
Office of the Secretary of Defense (OSD) and
Organization of the Joint Chiefs of Staff (OJCS)
Tri-Service Medical Information System (TRIMIS)
U.S. Court of Military Appeals (USCMA)
Washington Headquarters Services (WHS)

Other Defense Activities.

Defense Audiovisual Agency (DAVA)
Defense Communications Agency (DCA)
Defense Contract Audit Agency (DCAA)
Defense Intelligence Agency (DIA)
Defense Investigative Service (DIS)
Defense Logistics Agency (DLA)
Defense Mapping Agency (DMA)
Defense Nuclear Agency (DNA)
Department of Defense Dependents Schools (DODDS)
Uniformed Services University of the
Health Sciences (USUHS)

Part-Time Employees. Employees who are regularly scheduled for a prearranged tour of duty which is less than the specified number of hours or days worked by full-time employees in the same employment group or class.

Permanent Appointments. Permanent appointments are defined within each type of service as follows:

1. Competitive Service - Employees serving under career appointments who are serving or who have completed their initial appointment probation or who are not required to serve an initial appointment probation. Also includes employees with career-conditional appointments.
2. Excepted Service - Employees whose appointments carry no restrictions or conditions, such as conditional appointments, indefinite or specific time limitations, or trial periods. Based on tenure, can include employees serving trial periods or those whose tenure is equivalent to career-conditional in the Competitive Service.

3. Senior Executive Service (SES) - All SES employees except those serving under "limited term" and "limited emergency" appointments.

Salaried Employees. Primarily employees occupying positions subject to the Classification Act of 1949, as amended, and a limited number of other employees whose compensation is established by other legislation, Executive Order, or administrative determination.

Senior Executive Service (SES). Positions in an agency which are grade 16, 17, or 18 of the General Schedule or Level IV or V of the Executive Schedule (unless exempted). Also includes equivalent positions which need not be filled by appointment by the President and confirmation by the Senate and which have not been specifically excluded from the SES.

Total Paid Civilian Employment. Total direct and indirect hire civilian employment. For direct hires, includes, with some exceptions, all direct hire employees who had not officially separated as of the report date and who either worked during the reporting period or were on paid leave.

Wage System Employees. Employees whose basic rates of pay are fixed in accordance with locally prevailing rates or by wage boards or similar administrative authority. Includes prevailing rate employees. (Prevailing rate employees are those employed by an agency in a recognized trade or craft; other skilled mechanical craft; or an unskilled, semiskilled, or skilled manual labor occupation. Also includes any other person, including a foreman or supervisor, in a position where trade, craft, or labor experience and knowledge is a paramount requirement.)

EWIND

Dtjic

5-86