

AD-A148 834

INPUT-OUTPUT STABILITY ANALYSIS WITH MAGNETIC
HYSTERESIS NON-LINEARITY. (U) UNIVERSITY OF SOUTHERN
CALIFORNIA LOS ANGELES DEPT OF ELECTRI.

1/1

UNCLASSIFIED

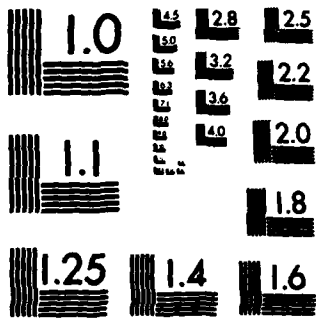
M G SAFONOV ET AL. DEC 83 AFOSR-TR-84-1121 F/G 9/3

NL

END

FILMED

DTIC



MICROCOPY RESOLUTION TEST CHART
NATIONAL BUREAU OF STANDARDS-1963-A

CUMENTATION PAGE

1a. REPORT SE
UNCLAS **AD-A148 834**

2a. SECURITY I

2b. DECLASSIFICATION / DOWNGRADING SCHEDULE

4. PERFORMING ORGANIZATION REPORT NUMBER(S)

1b. RESTRICTIVE MARKINGS

3. DISTRIBUTION / AVAILABILITY OF REPORT
APPROVED FOR PUBLIC RELEASE;
DISTRIBUTION UNLIMITED

5. MONITORING ORGANIZATION REPORT NUMBER(S)

AFOSR-TR- 84-1121

6a. NAME OF PERFORMING ORGANIZATION
University of S. California
Dept. of Electrical Engineering

6b. OFFICE SYMBOL
(if applicable)
- Systems

7a. NAME OF MONITORING ORGANIZATION

AFOSR/NM

6c. ADDRESS (City, State, and ZIP Code)

Los Angeles, CA 90089

7b. ADDRESS (City, State, and ZIP Code)

Bolling AFB, DC 20332-6448

8a. NAME OF FUNDING / SPONSORING ORGANIZATION

AFOSR

8b. OFFICE SYMBOL
(if applicable)
NM

9. PROCUREMENT INSTRUMENT IDENTIFICATION NUMBER

AFOSR-80-0013

8c. ADDRESS (City, State, and ZIP Code)

Bolling AFB, DC 20332

10. SOURCE OF FUNDING NUMBERS

PROGRAM ELEMENT NO.	PROJECT NO.	TASK NO.	WORK UNIT ACCESSION NO.
61102F	2304	A1	

11. TITLE (Include Security Classification)

INPUT-OUTPUT STABILITY ANALYSIS WITH MAGNETIC HYSTERESIS NON-LINEARITY

12. PERSONAL AUTHOR(S)

M.G. Safonov, K. Karimlou

13a. TYPE OF REPORT
REPRINT

13b. TIME COVERED

FROM 14 Dec TO 16 Dec 83

14. DATE OF REPORT (Year, Month, Day)

83 Dec 83

15. PAGE COUNT

4

16. SUPPLEMENTARY NOTATION

22ND IEEE CONFERENCE ON DECISION AND CONTROL, 14-16 Dec 83, Marriott Hotel, San Antonio Texas

17. COSATI CODES

FIELD	GROUP	SUB-GROUP

18. SUBJECT TERMS (Continue on reverse if necessary and identify by block number)

In this document

19. ABSTRACT (Continue on reverse if necessary and identify by block number)

Popov type frequency domain conditions for stability of feedback systems containing ferromagnetic hysteresis non-linearity are established.

DTIC
S
DEC 27 1984
A

DTIC FILE COPY

20. DISTRIBUTION / AVAILABILITY OF ABSTRACT

UNCLASSIFIED/UNLIMITED SAME AS RPT. DTIC USERS

21. ABSTRACT SECURITY CLASSIFICATION

UNCLASSIFIED

22a. NAME OF RESPONSIBLE INDIVIDUAL

Capt. Thomas

22b. TELEPHONE (Include Area Code)

(202) 767-5026

22c. OFFICE SYMBOL

NM

INPUT-OUTPUT STABILITY ANALYSIS WITH MAGNETIC HYSTERESIS NON-LINEARITY

M. G. Safonov* and K. Karimlou*

Department of Electrical Engineering - Systems
 University of Southern California
 Los Angeles, CA 90089

Abstract

Popov type frequency domain conditions for stability of feedback systems containing ferromagnetic hysteresis non-linearity are established.

I. Introduction

Popov criterion and its extensions consider non-linear elements that are memoryless and pass through the origin, i.e., $f(0) = 0$. For an important class of non-linearities, ferromagnetic hysteresis, none of the above conditions are satisfied, i.e., it is neither non-dynamic nor pass through the origin. Therefore, to analyze the stability of systems containing this type of non-linearity, appropriate modifications to Popov's approach should be made.

Published material to tackle this problem is scarce. The only work known to us is by Lecoq and Hopkin [1], where by letting the derivative of their input signals to belong to exponentially weighted L_2 spaces, they obtained bounded input-bounded output stability for systems containing hysteresis non-linearities.

In the present paper we analyze the stability of feedback systems of the form shown in fig. (1a), where N is a ferromagnetic hysteresis non-linearity and H is a linear element. The analysis is done by substitution of the model for the hysteresis proposed by Chua and Stromsmoe [2]. Then the concept of passivity is utilized to derive Popov type frequency domain conditions on the linear element H for stability of the feedback system. It will be shown that if the same conditions as in the classical Popov criterion¹ are satisfied by inputs u_1 and u_2 and linear element H then the feedback system of fig. (1a) is stable if the non-linear element N is a ferromagnetic hysteresis.

II. Hysteresis Modeling

The model for ferromagnetic hysteresis of Chua and Stromsmoe [2] is given by

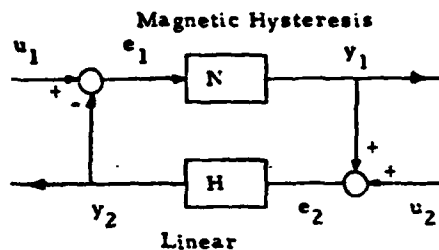
$$\frac{dy}{dt} = g_0[x(t) - f_0(y(t))] \quad (2.1)^2$$

where $x(t)$ and $y(t)$ are real-valued, continuous input and output signals of the hysteresis non-linearity

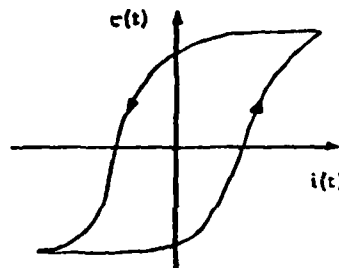
²Research supported in part by AFOSR Grant 80-0013 and in part by NSF Grant INT-8302754.

¹By the classical Popov criterion, we refer to the earliest version of the result obtained by Popov [3] and also derived by different approaches in [4], [5], [6], and not later generalizations of the result by Yakubovich [7] among others.

²o: Functional Composition.



(a)



(b) Ferromagnetic Hysteresis Loop.

Fig. 1

Table 1
 Notations

Symbol	Meaning
R, R_+	Field of real and positive real numbers.
L_1	The space of signals such that $\int_0^\infty x(t) dt$ exists.
L_∞	The space of bounded signals.
L_{2e}	The space of signals which are square integrable on every bounded interval $[0, T]$ [9].
L_2	The Hilbert space of signals which are square integrable on $(-\infty, \infty)$ with inner product $\langle x, y \rangle$.
$\langle x, y \rangle$	$\int_{-\infty}^{\infty} y^*(t) x(t) dt$
$\ x\ $	$\sqrt{\langle x, x \rangle}$
$\langle x, y \rangle_T$	$\int_0^T y^*(t) x(t) dt$
$\ x\ _T$	$\sqrt{\langle x, x \rangle_T}$
x_T	Truncated x [6]
J	Set of instances of time of interest.
\mathcal{A}	Convolution Algebra [6].
$Re \{ \cdot \}$	Real part of a complex quantity.

representing the current $i(t)$ and the flux linkage $\psi(t)$ of an inductor (transformer); and g and f are strictly monotonically increasing, differentiable, onto functions enjoying the important property of

$$g(0) = f(0) = 0$$

Equation (2.1) models the behavior of ferro-magnetic hysteresis successfully and with very good accuracy. It predicts the expansion of the area of the hysteresis loop with increasing frequency and predicts minor hysteresis loops such as commonly occur when a d-c plus periodic input is applied.

After plotting the hysteresis loop for a convenient signal, simple procedures are given in [2] to determine g and f for that loop. When non-linear functions g and f are determined, they can be substituted in the model of equation (2.1) to predict, with good accuracy, the hysteresis shape and/or its output for any arbitrary input. For further detail and examples see [2].

III. Passivity and Stability

Definition (3.1) [6]: Let $H: L_{2e} - L_{2e}$. Then H is passive iff there exists some constant $\delta \in \mathbb{R}$ such that

$$\langle Hx, x \rangle_T \geq \delta \quad \forall x \in L_{2e} \\ \forall T \in \mathcal{J}$$

Definition (3.2) [6]: Let $H: L_{2e} - L_{2e}$. Then H is strictly passive iff there exists $\delta > 0$ and some constant $\beta \in \mathbb{R}$ such that

$$\langle Hx, x \rangle_T \geq \delta \|x_T\|^2 + \beta \quad \forall x \in L_{2e} \\ \forall T \in \mathcal{J}$$

Definition (3.3) [11]: The feedback system of fig. (1a) is said to be finite gain L_2 -stable if

- a) $e_1, e_2, y_1, y_2 \in L_2 \quad \forall u_1, u_2 \in L_2$
 b) There exists constants ρ_1 and ρ_2 such that
 $\|e_1\|, \|e_2\|, \|y_1\|, \|y_2\| \leq \rho_1 \|u_1\| + \rho_2 \|u_2\| \quad \forall u_1, u_2 \in L_2$

In the following well-known theorem, the concept of passivity is used to establish finite gain L_2 -stability of feedback system shown in fig. (1a), where N and H are considered to be operators in the general sense.

Theorem (3.1): Consider the feedback system shown in fig. (1a)

$$e_1 = u_1 - He_2 \\ e_2 = u_2 + Ne_1$$

where $H, N: L_{2e} - L_{2e}$. Assume that for any $u_1, u_2 \in L_2$ there are solutions $e_1, e_2 \in L_{2e}$. Suppose that there are real constants ν, δ , and ϵ such that

$$\|Hx\|_T \leq \nu \|x\|_T \quad (3.1)$$

$$\langle Hx, x \rangle_T \geq \delta \|x\|_T^2 \quad (3.2)$$

$$\langle x, Nx \rangle_T \geq \epsilon \|Nx\|_T^2 \quad (3.3)$$

$$\forall x \in L_{2e}, \forall T \in \mathcal{J}$$

Under these conditions if

$$\epsilon + \nu > 0 \quad (3.4)$$

Then the feedback system is finite gain L_2 -stable.

Proof: See for example [6]. \square

IV. Main Results

Substitution of the model given by equation (2.1) for the hysteresis non-linearity N gives the feedback system of fig. (2). Note that although the standard magnetic hysteresis non-linearity, as shown in fig. (1b), is the plot of flux linkage $\psi(t)$ vs. current $i(t)$ of an inductor (transformer), but from circuit analysis point of view, the input and output of the model replaced for N as shown in fig. (2) are current through and voltage across the inductor (transformer).³

Next, the main stability result is presented.

Theorem (4.1): Consider the feedback system of fig. (2), where $h(t) \in L_1(\mathbb{R}_+)^4$, and $h(t) \in \mathcal{A}$.

Assume that for any $u_1, u_2 \in L_2$, there are solutions $e_1, e_2, y_1, y_2 \in L_{2e}$. If a constant $q \geq 0$ exists such that for some constant δ

$$\operatorname{Re} \{ (1+qj\omega) H(j\omega) \} = \delta > 0 \quad \forall \omega \geq 0 \quad (4.1)$$

Then $\forall u_1, \dot{u}_1, u_2 \in L_2$

a) (i) $e_1, \dot{e}_1, e_2, y_1, y_2, \dot{y}_2 \in L_2$.

(ii) there exists constants ρ_1 and ρ_2 such that

$$\|e_1\|, \|\dot{e}_1\|, \|e_2\|, \|y_1\|, \|y_2\|, \|\dot{y}_2\| \\ \leq \rho_1 (\|u_1\| + q \|\dot{u}_1\|) + \rho_2 \|u_2\|$$

i. e., finite gain L_2 -stability.

b) $e_1, e_2, y_1, y_2 \in L_\infty$ are continuous, and go to zero as $t \rightarrow \infty$. \square

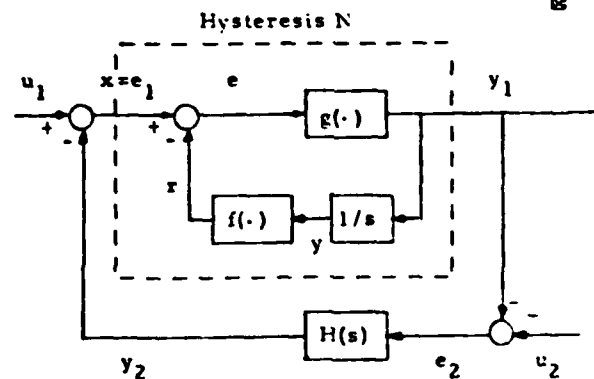


Fig. 2

Proof: See appendix. \square

Upper and lower bounds of non-linearities g and f can be taken into consideration to obtain less conservative classes of linear element $H(s)$. As an example, an upper bound on g is exploited in the

³The voltage across an inductor (transformer) is proportional to rate of change of the flux linkage, constant of proportionality being the number of turns.

⁴ $h(t)$ is the impulse response of $H(s)$.

following Corollary.

Corollary (4.1): Consider the feedback system of fig. 2, where $g \in \text{sector}(0, k)$, $h(t) \in L_1(\mathbb{R}_+)$, $\dot{h}(t) \in \mathcal{A}$. Assume that for any $u_1, u_2 \in L_2$, there exists solutions $e_1, e_2, y_1, y_2 \in L_{2e}$. If a constant $q \geq 0$ exists such that for some constant b

$$\operatorname{Re} \{ (1+qj\omega)H(j\omega) \} + \frac{1}{k} = \varepsilon > 0 \quad \forall \omega \geq 0 \quad (4.2)$$

then $\forall u_1, \dot{u}_1, u_2 \in L_2$ conclusions of Theorem (4.1) hold. ■

Proof: For outline of the proof, see appendix. ■

V. Conclusion

Popov type frequency domain conditions for stability of feedback systems containing ferro-magnetic hysteresis non-linearity are established. To obtain the results, model of Chua and Stromsmoe [2] for hysteresis is employed and the concept of passivity is utilized.

VI. Appendix

To simplify the proof of Theorem (4.1) and Corollary (4.1), the following two lemmas will be proved first.

Lemma (A.1): Let $q \geq 0$, $g \in \text{sector}(0, \infty)$. Then the system of fig. (A.1) is passive [6]. ■

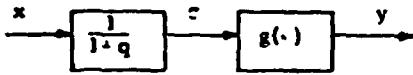


Fig. (A.1)

Proof: $\langle y, x \rangle_T = \langle g(\cdot), \sigma + q\dot{\sigma} \rangle_T$
 $= \langle g(\cdot), \dot{\sigma} \rangle_T + q \langle g(\cdot), \sigma \rangle_T$

(i): $\langle g(\cdot), \dot{\sigma} \rangle_T \geq 0$ because $g \in \text{sector}(0, \infty)$

(ii): $q \langle g(\cdot), \sigma \rangle_T = q \int_0^T g(\sigma) \dot{\sigma} dt$
 $= q \int_0^{\sigma(T)} g(\sigma) d\sigma$

Define $G(\sigma) = \int_0^{\sigma} g(\xi) d\xi$, where $G: \mathbb{R} \rightarrow \mathbb{R}$.

Clearly $G(\sigma) \geq 0 \quad \forall \sigma \in \mathbb{R}$. Then

$$q \langle g(\cdot), \sigma \rangle_T \geq -q G[\sigma(0)] \quad \forall T \geq 0$$

(i) and (ii) implies $\langle y, x \rangle_T \geq -q G[\sigma(0)] \quad \forall T \geq 0$
 $\forall x \in L_{2e}$.

Passivity follows. ■

Lemma (A.2): Let: $q \geq 0$, $f \in \text{sector}(0, \infty)$, $\frac{df(x)}{dx} > 0$. Then the system of fig. (A.2) is passive. ■

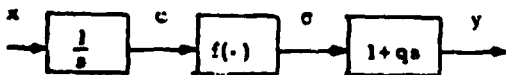


Fig. (A.2)

Proof: $\langle y, x \rangle_T = \langle \sigma + q\dot{\sigma}, \dot{\sigma} \rangle_T$
 $= \langle f(\cdot), \dot{\sigma} \rangle_T + q \langle \dot{\sigma}, \sigma \rangle_T$

(i) $\langle f(\cdot), \dot{\sigma} \rangle_T \geq -F[\sigma(0)] \quad \forall T \geq 0$
 where $F: \mathbb{R} \rightarrow \mathbb{R}$, by lemma (A.1, (ii)).

(ii) $q \langle \dot{\sigma}, \sigma \rangle_T = q \int_0^T \frac{d}{dt} [\sigma^2] \frac{dt}{2} = q \int_0^{\sigma(T)} \frac{d}{d\sigma} [\sigma^2] \frac{d\sigma}{2} = q \int_0^{\sigma(T)} \sigma d\sigma$
 $= \frac{q}{2} \sigma^2(T) \geq 0$
 because $\frac{d}{d\sigma} [\sigma^2] > 0$ and $[\frac{d\sigma}{dt}]^2 \geq 0$

(i) and (ii) implies that $\langle y, x \rangle_T \geq -F[\sigma(0)] \quad \forall T \geq 0$
 $\forall x \in L_{2e}$
 Passivity follows. ■

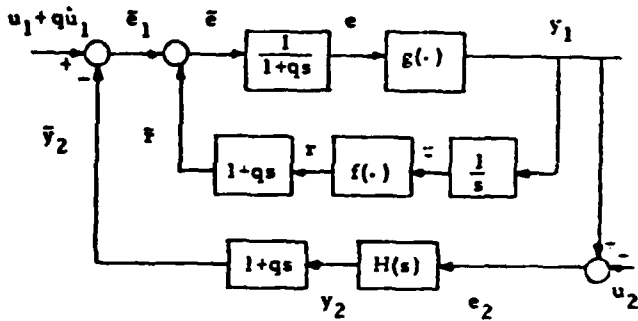


Fig. (A.3)

Proof of Theorem (4.1): (a): By inclusion of the multiplier $(1+qs)$, $q \geq 0$, transform the feedback system of fig. (2) to the one shown in fig. (A.3).

(i): $\langle y_1, \dot{e}_1 \rangle_T = \langle y_1, \dot{e} \rangle_T + \langle y_1, \dot{F} \rangle_T$

(ia): $\langle y_1, \dot{e} \rangle_T \geq -q G[e(0)]$ by lemma (A.1)

(ib): $\langle y_1, \dot{F} \rangle_T \geq -q F[c(0)]$ by lemma (A.2)

Then (ia) and (ib) implies that feed forward block is passive.

(ii) $(1+qs)H(s)$ is strictly passive if inequality (4.1) is satisfied. Since $h(t) \in L_1(\mathbb{R}_+)$ and $\dot{h}(t) \in \mathcal{A}$, $(1+qs)H(s)$ has finite gain.

Therefore, by Theorem (3.1) the feedback system of fig. (A.3) is finite gain L_2 -stable

$\forall u_1, \dot{u}_1, u_2 \in L_2$, i.e., $\|e_1, e_2, y_1, \dot{y}_2\| \in L_2$ and $\|e_1\|, \|e_2\|, \|y_1\|, \|\dot{y}_2\| \leq C_1 \|u_1 + qu_1\| + C_2 \|u_2\|$.

From Fig. (A.3), $y_2(t) = m(t) + \dot{y}_2(t)$ where

$m(t) = L^{-1} \{ \frac{1}{1+qs} \}$, $m(t) \in L_1$ and $\dot{y}_2(t) \in L_2$, therefore, $y_2(t), \dot{y}_2(t) \in L_2$ [6, Appendix C]. Furthermore, $\|y_2(t)\|_{L_2} = \|m(t) + \dot{y}_2(t)\|_{L_2} \leq \|m(t)\|_{L_1} + \|\dot{y}_2(t)\|_{L_2}$ [6, App. C].

But $\|m(t)\|_{L_1}$ is finite (= Constant: C).

Therefore

⁵ $L^{-1}\{\cdot\}$: Inverse Laplace Transform.

$$\begin{aligned} \|y_2(t)\|_{L_2} &\leq C \|\bar{y}_2(t)\|_{L_2} \\ &\leq C \rho_1 \|u_1 + q \dot{u}_1\|_{L_2} + C \rho_2 \|u_2\|_{L_2} \\ &\leq C \rho_1 (\|u_1\|_{L_2} + q \|\dot{u}_1\|_{L_2}) + C \rho_2 \|u_2\|_{L_2} \end{aligned}$$

On the other hand, $\dot{y}_2(t) = \dot{m}(t) * \bar{y}_2(t)$. Then

$$\begin{aligned} \|\dot{y}_2(t)\|_{L_2} &\leq \|\dot{m}(t)\|_{L_1} \|\bar{y}_2(t)\|_{L_2} \\ &\leq C \rho_1 (\|u_1\|_{L_2} + q \|\dot{u}_1\|_{L_2}) + C \rho_2 \|u_2\|_{L_2} \end{aligned}$$

because $\|\dot{m}(t)\|_{L_1}$ is finite too.

Similarly, $e_1(t) = m(t) * \bar{e}_1(t)$. Therefore, similar conclusions for $e_1(t)$ follow immediately.

(b): $y_2, \dot{y}_2 \in L_2$ and $e_1, \dot{e}_1 \in L_2$ implies that $y, e \in L_\infty$ are continuous, and go to zero as $t \rightarrow \infty$ [11]. Since the model, i.e., equation (2.1), is a continuous mapping from input to output [2], therefore, $e_1 \in L_\infty$ and $e_1(t) \rightarrow 0$ as $t \rightarrow \infty$ implies that the same properties hold for $y_1(t)$, i.e., $y_1(t) \in L_\infty$ is continuous, and go to zero as $t \rightarrow \infty$.

Similar conclusions for e_2 are immediate. \square

Proof Outline of Corollary (4.1): Apply a positive feedback of gain $\frac{1}{k}$ around g . To compensate for it, apply a positive feed forward with gain $1/k$ to $H(s)$. Let $\hat{g} = (g^{-1} - \frac{1}{k})^{-1}$. Then $\hat{g} \in \text{sector}(0, \infty)$ and $\hat{g}(0) = 0$. Following the same procedure as Theorem (4.1). Conclusions are immediate. \square

References

- [1] Lecoq, L. P. and Hopkin, A. M., "A Functional Analysis Approach to L_∞ Stability and Its Applications to Systems with Hysteresis," IEEE Trans. Auto. Control, Vol. AC-17, No. 3, p. 328, June 1972.
- [2] Chua, L.O. and Stromsmoe, K. A., "Lumped-Circuit Models for Non-linear Inductors Exhibiting Hysteresis Loop," IEEE Trans. on Circuit Theory, Vol. CT-17, p. 564, Nov. 1970.
- [3] Popov, V. M., "Absolute Stability of Non-linear Systems of Automatic Control," Automat. i Telemekh., Vol. 22, No. 8, p. 961, Aug. 1961.
- [4] Hsu, J. C. and Meyer, A. U., Modern Control Principles and Applications, McGraw-Hill, 1968.
- [5] Narendra, K. S. and Taylor, J. H., Frequency Domain Criteria for Absolute Stability, Academic Press, New York, 1973.
- [6] Desoer, C. A. and Vidyasagar, M., Feedback Systems: Input-Output Properties, Academic Press, New York, 1975.

- [7] Yakubovich, V. A., "The Matrix Inequality Method in the Theory of Stability of Non-linear Control Systems. II. Absolute Stability in a Class of Non-linearities with a Condition on Derivative," Automat. i Telemekh., Vol. 26, No. 4, p. 577, April 1965.
- [8] Zames, G., "On the Input-Output Stability of Time Varying Non-linear Feedback Systems, Part I: Conditions Derived Using Concepts of Loop Gain, Conicity, and Positivity," IEEE Trans. Auto. Control, Vol. AC-11, p. 225, April 1966.
- [9] Safonov, M. G., "Propagation of Conic Model Uncertainty in Hierarchical Systems," IEEE Trans. Auto. Control, Vol. AC-28, p. 701, June 1983.
- [10] MacFarlane, A. G. J., Engineering Systems Analysis, Reading, Mass., Addison-Wesley, 1964.
- [11] Willems, J. C., The Analysis of Feedback Systems, Cambridge, Mass., MIT Press, 1971.

Accession For	
INTC 62-21	<input checked="" type="checkbox"/>
INTC 215	<input type="checkbox"/>
INTC 215	<input type="checkbox"/>
INTC 215	<input type="checkbox"/>
Availability Codes	
Dist	Avail and/or Special
A1	



END

FILMED

1-85

DTIC

