

AD-A148 393

MULTIPLE SCATTERING EFFECTS IN RADAR OBSERVATIONS OF
WAKES(U) MITRE CORP MCLEAN VA C G CALLAN ET AL. AUG 84
JSR-84-203B F19628-84-C-0001

1/1

UNCLASSIFIED

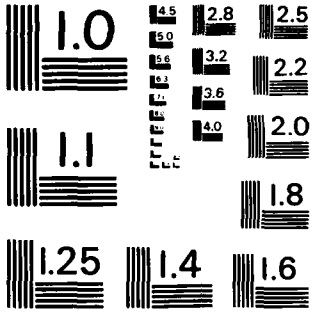
F/G 17/9

NL

END

FBI/DOJ

DTIC



MICROCOPY RESOLUTION TEST CHART
NATIONAL BUREAU OF STANDARDS-1963-A

2

**Multiple Scattering Effects in
Radar Observations of Wakes**

AD-A148 393

DTIC

DTIC
ELECTE
DEC 10 1984
B

MITRE

DISTRIBUTION STATEMENT A
Approved for public release
Distribution Unlimited

84 11 28 308

UNCLASSIFIED

SECURITY CLASSIFICATION OF THIS PAGE (When Data Entered)

REPORT DOCUMENTATION PAGE		READ INSTRUCTIONS BEFORE COMPLETING FORM	
1. REPORT NUMBER JSR-84-203B	2. GOVT. ACCESSION NO. <i>A148393</i>	3. RECIPIENT'S CATALOG NUMBER	
4. TITLE (and Subtitle) Multiple Scattering Effects in Radar Observations of Wakes		5. TYPE OF REPORT & PERIOD COVERED	
		6. PERFORMING ORG. REPORT NUMBER	
7. AUTHOR(s) C. G. Callan K. M. Case		8. CONTRACT OR GRANT NUMBER(s) F19628-84-C-0001	
		10. PROGRAM ELEMENT, PROJECT, TASK AREA & WORK UNIT NUMBERS	
9. PERFORMING ORGANIZATION NAME AND ADDRESS The MITRE Corporation 1820 Dolley Madison Blvd. McLean, VA 22102		12. REPORT DATE August 1984	13. NO. OF PAGES 20
		15. SECURITY CLASS. (of this report) Unclassified	
11. CONTROLLING OFFICE NAME AND ADDRESS		15a. DECLASSIFICATION/DOWNGRADING SCHEDULE	
		14. MONITORING AGENCY NAME & ADDRESS (if diff. from Controlling Office)	
16. DISTRIBUTION STATEMENT (of this report) <div style="border: 1px solid black; padding: 5px; text-align: center;">DISTRIBUTION STATEMENT A Approved for public release; Distribution Unlimited</div>			
17. DISTRIBUTION STATEMENT (of the abstract entered in Block 20, if different from report)			
18. SUPPLEMENTARY NOTES			
19. KEY WORDS (Continue on reverse side if necessary and identify by block number)			
20. ABSTRACT (Continue on reverse side if necessary and identify by block number) The large amplitude waves observed in ship wakes and the large radar returns, including sharp angular dependencies, suggest that first order Bragg scattering theory is inadequate to describe the experimental data. This report considers a simple theory which concludes that there can be look angles such that second order scattering can be larger than first order. These conclusions are very tentative because of the lack of knowledge of the basic wave fields.			

Multiple Scattering Effects in Radar Observations of Wakes

C. G. Callan
K. M. Case

August 1984

JSR-84-203B

Approved for public release, distribution unlimited.

DTIC
ELECTE
DEC 10 1984
S D

B

JASON
The MITRE Corporation
1820 Dolley Madison Boulevard
McLean, Virginia 22102

MULTIPLE SCATTERING EFFECTS IN RADAR OBSERVATIONS OF WAKES

I. Introduction

The large amplitude waves observed in ship wakes and the large radar returns including sharp angular dependences suggest that first order Bragg scattering theory is inadequate to describe the experiments.

Here we consider a simple theory to qualitatively investigate higher order effects. There are two important limitations.

(a) We restrict our consideration to a simple scalar problem with simple boundary conditions. A full scale theoretical treatment of the true electromagnetic problem can readily be carried out. However, it is much more complicated, probably obscures the central points, and in view of (b) probably unwarranted at this point.

(b) The detailed nature of the scattering wave field is very poorly known. To get some insight we have applied the formula to an

idealized mathematical description of a Kelvin wake and to a model "derived" from the Dabob Bay experiments.

The essential conclusions are that there can be look angles such that second order scattering can be larger than first order and comparable in magnitude with the first order scattering when that is significant.

We emphasize the weakness of the conclusions because of the lack of detailed knowledge of the basic wave fields. Recommendations to obtain the needed information are made.



Accession For	
NTIS GRA&I	<input checked="" type="checkbox"/>
DTIC TAB	<input type="checkbox"/>
Unannounced	<input type="checkbox"/>
Justification	
By	
Distribution/	
Availability Codes	
Dist	Avail and/or
A-1	Special

II. A Simple Theory

We consider the electromagnetic field to be described by a simple scalar field satisfying the wave equation.

$$(\nabla^2 + k^2) \phi = 0 . \quad (1)$$

An incident field

$$\phi_i = e^{i(\vec{k}_h \cdot \vec{r} - k_v Z)} \quad (2)$$

$$(\vec{k}_h^2 + k_v^2) = k^2$$

is to be scattered by a patch of a wavy surface centered on the plane $Z = 0$, i.e., the surface S is

$$Z = h(x,y) \quad (3)$$

where h is to be small.

As a simple boundary condition we choose $\phi = 0$ on S .

We decompose the total field ϕ into

$$\phi = \phi_0 + \Delta\phi . \quad (4)$$

Here ϕ_0 is the field which would result if $h = 0$.

$$\text{i.e. } \phi_0 = e^{i \mathbf{k}_h \cdot \mathbf{r}} \left\{ e^{-i k_v Z} - e^{i k_v Z} \right\} \quad (5)$$

Further we introduce a Green's function $G(\mathbf{r}', \mathbf{r})$ satisfying

$$\nabla^2 G(\mathbf{r}', \mathbf{r}) = \delta(\mathbf{r} - \mathbf{r}') \quad (6)$$

$$\text{and } G(x', y', 0; \mathbf{r}) = 0 \quad (7)$$

Applying Green's theorem we obtain

$$\Delta\phi(\mathbf{r}) = \int_S \left\{ \Delta\phi(\mathbf{r}') \frac{\partial}{\partial n'} G(\mathbf{r}', \mathbf{r}) - G(\mathbf{r}', \mathbf{r}) \frac{\partial \Delta\phi}{\partial n'}(\mathbf{r}') \right\} dS' . \quad (8)$$

For a perturbation theory we assume $h \sim \epsilon$ and consider a formal expansion in ϵ .

$$\text{Then } \Delta\phi(\mathbf{r}) = \epsilon\phi_1(\mathbf{r}) + \epsilon^2\phi_2(\mathbf{r}) + \dots \quad (9)$$

Restricting ourselves up to second order terms this can be written

$$\Delta\phi(r) = \iint dx' dy' \Delta\phi(r') \frac{\partial}{\partial z'} G(\underline{r}', \underline{r}) - G(\underline{r}', \underline{r}) \frac{\partial \Delta\phi}{\partial z'} \quad (10)$$

We readily construct

$$G(\underline{r}', \underline{r}) = \frac{-1}{(2\pi)^2} \iint d^2k e^{i [k_x (x-x') + k_y (y-y')] - i\mu(z-z')} + e^{-i\mu(z-z')} - e^{i\mu(z+z')} - e^{-i\mu(z+z')}$$

Then to first order we have

$$\phi_1(\underline{r}) = \iint dx' dy' \phi_1(x', y', 0) \frac{\partial}{\partial z'} G(x', y', 0; \underline{r}) \quad (11)$$

But $\epsilon\phi_1(x', y', h) + \phi_0(x', y', h) = 0$

$$\therefore \phi_1(x', y', 0) = 2ik_v h e^{ik_1 \cdot \underline{r}'}$$

and $\frac{\partial}{\partial z'} G(x', y', 0; \underline{r})$

$$= \frac{1}{(2\pi)^2} \iint d^2k e^{i [k_x (x-x') + k_y (y-y')] - i\mu z} - e^{-i\mu z} \quad (12)$$

Thus

$$\phi_1(\underline{r}) = 2ik_v \iint dx^- dy^- \frac{1}{(2\pi)^2} \int d^2 k e^{i(k_x x^- + k_y y^-)} [e^{i\mu z^-} - e^{-i\mu z^-}]$$

$$\times h(x^-, y^-) e^{i[(k_x^i - k_y) x^- + (k_y^i - k_y) y^-]} \quad (13)$$

Now if we write

$$h(x^-, y^-) = \frac{1}{(2\pi)^2} \int d^2 q \hat{h}(q^-) e^{-i q^- \cdot \underline{r}^-} \quad (14)$$

Then

$$\phi_1(\underline{r}) = 2ik_v \frac{1}{(2\pi)^2} \iint d^2 q \hat{h}(q^-) e^{i[(k_1 - q) \cdot \underline{r}^-]} \left(e^{i\mu(k_1 - q)Z^-} - e^{-i\mu(k_1 - q)Z^-} \right) \quad (15)$$

From Equation (8) we then read off that

$$\phi_2(\underline{r}) = \iint dx^- dy^- \phi_1(x^-, y^-, 0) \frac{\partial^2}{\partial Z^-^2} G(x^-, y^-, 0; \underline{r})$$

$$+ \phi_2(x^-, y^-, 0) \frac{\partial}{\partial Z^-} G(x^-, y^-, 0; \underline{r})$$

$$- h \frac{\partial}{\partial Z^-} G(x^-, y^-, 0; \underline{r}) \frac{\partial}{\partial Z^-} \phi_1(x^-, y^-, 0)$$

Note: With our boundary condition

$$\frac{\partial^2 G}{\partial Z^2}(\mathbf{x}', \mathbf{y}', 0; \underline{r}) = 0 .$$

Also $\epsilon \phi_1(\mathbf{x}', \mathbf{y}', h) + \epsilon^2 \phi_2(\mathbf{x}^1, \mathbf{y}^1, 0) + \phi_0 = 0$

But to order ϵ^2 we have $\frac{\partial^2 \phi_0}{\partial Z^2} \Big|_{Z'=0} = 0$

$\therefore \phi_2(\mathbf{x}', \mathbf{y}', 0) = -h \frac{\partial}{\partial Z} \phi_1(\mathbf{x}', \mathbf{y}', 0)$

and so

$$\phi_2 = -2 \iint d\mathbf{x}' d\mathbf{y}' h \frac{\partial}{\partial Z} \phi_1(\mathbf{x}', \mathbf{y}', 0) \frac{\partial}{\partial Z} G(\mathbf{x}', \mathbf{y}', 0; \underline{r}) \quad (16)$$

which yields

$$\phi_2 = \frac{-8ik_v}{(2\pi)^4} \iint d^2q d^2p \hat{h}(q) \hat{h}(k^P) \mu(k_1 - q)$$

$$\times e^{i[k_1 - q - p] \cdot \underline{r}} \left\{ e^{i\mu(k_1 - q - k)Z} - e^{-i\mu(k_1 - q - k)Z} \right\}$$

In particular if we ask for the amplitude of the wave in the back scattered direction, we obtain

(a) From equation (15)

$$\phi_1 = \frac{2ik_v}{(2\pi)^2} \hat{h}(2\underline{k}_1) \quad (18a)$$

(b) From Equation (17)

$$\phi_2 = \frac{-8ik_v}{(2\pi)^4} \iint d^2q \hat{h}(\underline{k}_1 - q) \hat{h}(\underline{k}_1 + q) \sqrt{k^2 - q^2}$$

Thus

$$\frac{\phi_2}{\phi_1} = \frac{-4}{(2\pi)^2} \frac{\iint d^2q \hat{h}(\underline{k}_1 - q) \hat{h}(\underline{k}_1 + q) \sqrt{k^2 - q^2}}{\hat{h}(2\underline{k}_1)} \quad (19)$$

III. Application to "Mathematical" Kelvin Wakes

Let us now apply these results to the Kelvin wake as computed by simple stationary phase methods. There are many things wrong with this simplest picture of the wake, but we believe that it gives a good enough picture of the wave heights for an analysis of the importance of multiple scattering.

The stationary phase picture asserts that at a point (x,y) in the wake, making an angle θ with respect to the wake axis, the dominant wave vectors in the surface height, h , are

$$k_x = -\frac{g}{2U^2\theta} = -\frac{g}{2U^2} \frac{x}{y}$$

$$k_y = \frac{g}{4U^2\theta^2} = \frac{g}{4U^2} \frac{x^2}{y^2}$$

where U is the ship velocity which is in the x direction. This means that the ocean wave height function is

$$h(x,y) = A(x,y) \cos \phi(x,y)$$

$$\phi(x,y) = k_x(x,y) x + k_y(x,y) \cdot y .$$

where $A(x,y)$ is a slowly varying function, poorly calculable from stationary phase arguments, and ϕ is rapidly varying and, of course, determined by the stationary phase arguments. There are actually two stationary phase solutions for \vec{k} : the one given, corresponding to the diverging wave train, and another one corresponding to the transverse wave train. The two trains are displayed in Figure 1. The short wavelengths of direct interest in radar backscatter are to be found in the diverging wave system, so we will not concern ourselves here with the transverse waves. We will later resort to a combination of theoretical argument and direct observation to determine reasonable values for A in various parts of the wake.

To model a SAR observation of the ocean surface, we assume that the radar processing in effect forms a beam which illuminates a patch on the surface of linear dimension b centered on the point (x_0, y_0) . The radar return is therefore computed from the formula of the previous section by extending the spatial integrals only over the window $x_0 - \frac{b}{2} < x < x_0 + \frac{b}{2}$, $y_0 - \frac{b}{2} < y < y_0 + \frac{b}{2}$. The scattered intensity will, of course, depend on the patch size, b .

The scattering formula are expressed in terms of the Fourier transform, $\hat{h}(\vec{q})$, of the ocean surface. By the preceding remark, we want to compute the transform of the wave height times the radar

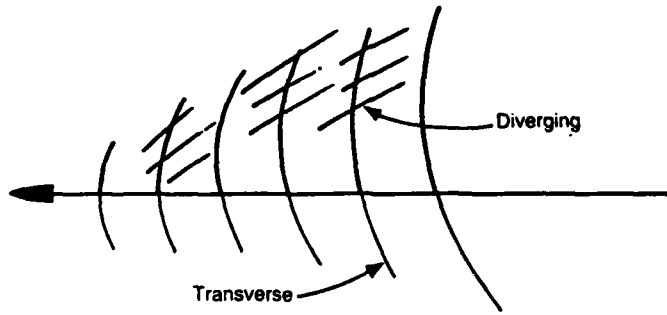


Figure 1. Kelvin Waves

window function. The result for a patch centered on a point at wake angle θ is

$$\hat{h}(\vec{q}) = A(\theta) \int_{-b/2}^{b/2} d\epsilon d\eta \cos \left(- \left(\frac{g}{2U^2\theta} - q_x \right) \epsilon + \left(\frac{g}{4U^2\theta^2} - q_y \right) \eta \right)$$

In writing this expression we have simplified the variation of (k_x, k_y) across the radar patch. The omitted effects would contribute terms quadratic in ϵ and η to the phase of the cosine. We have verified that for parameter values appropriate to the SEASAT or Dabob Bay problems, this approximation is reasonable. The result is

$$h(\vec{q}, \theta) = A(\theta) b^2 \operatorname{sinc} \left[\left(q_x + \frac{g}{2U^2\theta} \right) \frac{b}{2} \right] \operatorname{sinc} \left[\left(q_y - \frac{g}{4U^2\theta^2} \right) \frac{b}{2} \right]$$

For our purposes, it suffices to know that $h(\vec{q}, \theta)$ has a maximum amplitude of $b^2 A(\theta)$ and that it is peaked at the appropriate stationary phase wave number with a width in wave number space of $2\pi/b$.

We are now able to compute the radar backscatter amplitude in first and second Born approximation. According to the previous section,

$$\phi_1 = C \hat{h}(2\vec{k}_h, \theta)$$

$$\phi_2 = -iC \int \frac{d^2q}{(2\pi)^2} 4 \sqrt{k^2 - q^2} \hat{h}(\vec{k}_h + \vec{q}, \theta) \hat{h}(\vec{k}_h - \vec{q}, \theta)$$

where k is the magnitude of the radar wave vector, \vec{k}_h is the horizontal projection of that wave vector and C is a common factor of dimension $1/L^2$ which we would need to know in order to get the absolute scattered intensity.

Since \hat{h} is a sharply peaked function of its argument, $\phi_{1,2}$ will be large only for a narrowly-defined band of θ . If we define

$$\vec{k}_{\text{KELVIN}}(\theta) = \left(-\frac{g}{2U^2\theta}, \frac{g}{4U^2\theta^2} \right)$$

then the condition for first and second order scattering to be large is

$$\text{first order: } 2\vec{k}_h = \vec{k}_{\text{KELVIN}}(\theta)$$

$$\text{second order: } \vec{k}_h = \vec{k}_{\text{KELVIN}}(\theta)$$

The angular width of the first-order Born pattern is determined by the width in momentum space of \hat{h} and the rate of variation with θ of \vec{k}_{KELVIN} . A bit of algebra shows that

$$\frac{\delta\theta}{\theta} = \frac{2\pi}{b \cdot k_{\text{KELVIN}}} .$$

If $b \sim 6$ m and $\lambda_{\text{KELVIN}} \sim .3$ m (typical values for SEASAT), this gives $\delta\theta/\theta \sim 1/20$. This is very narrow indeed, but not out of line with observations.

Let us finally consider the relative sizes of first and second order scattered amplitudes. Due account being taken of the peak amplitude of \hat{h} and its momentum space width, we find that the maximum backscatter amplitudes in first and second Born approximations are

$$\phi_1^{\text{MAX}} = C \cdot b^2 A(\theta_1)$$

$$\phi_2^{\text{MAX}} = (2kA(\theta_2)) \cdot C \cdot b^2 A(\theta_2)$$

θ_1 and θ_2 are the (different!) wake angles at which the two types of scattering reach their maximum, k is the radar wave vector and b is the radar patch size. The integral over \vec{q} in the expression for ϕ_2 is, because of the narrowness in wave vector space of the function \hat{h} concentrated at $\vec{q} = 0$, leading to a considerable simplification in the formulas.

We expect that $A(\theta)$ is a reasonably slowly varying function of θ , except in the near neighborhood of $\theta = 0$. Therefore, to compare first and second order scattering we will assume that

$A(\theta_1) \sim A(\theta_2)$, obtaining

$$\frac{\phi_2}{\phi_1} = 4kA = 8\pi A/\lambda_{\text{radar}}$$

From slender ship theory we extract the result that the amplitudes of the diverging and transverse wave trains are related by

$$A_{\text{diverging}} \sim \theta^{3/2} A_{\text{transverse}}$$

for θ not too small. One readily finds transverse wave amplitudes of .5 m a kilometer behind a large ship. This would correspond to a diverging wave amplitude of 1.5 cm at $\theta = 6^\circ$. We will, therefore, take 1 cm as a representative value for $A(\theta)$. This is confirmed by the in situ wave height measurements of the Dabob Bay experiment. For a radar wavelength of 23.5 cm (appropriate to all the measurements under discussion) we therefore have $\phi_2/\phi_1, \sim 1$.

Our conclusion is that surface ship Kelvin wakes are strong enough that multiple scattering from the wake itself cannot be neglected.

At a minimum, this means that multiple returns, due to various orders of scattering ought to be seen. This might be the explanation of the multiple V structures seen in some SEASAT pictures.

IV. Dabob Bay

In the Dabob Bay experiment, the radar return from a wake was measured and the actual wave height was measured in a one-dimensional transverse cut across the wake. The maximum radar return came from points at wake angle $\theta \sim 3.6^\circ$. The direct measurement of the wave height in this region indicates that there is little energy at wave numbers appropriate to first order scattering and a substantial peak at wave numbers appropriate to second order scattering. This peak does not occur at the wave number predicted by simple Kelvin theory. This is a hydrodynamic puzzle about which we can say nothing. The question of interest to us is whether, given the measured surface height, it is reasonable that second order scattering should overwhelm first order scattering.

The r.m.s. displacement recorded at the interesting wake angle appears to be about 1 cm, and corresponds to surface wavelengths of order 40 cm. As was noted in the previous section, the quantity $2kA$, which determines the relative amplitude of second and first Born scattering for equal rms surface displacement, is of order 1 for $A \sim 1$ cm and $\lambda_{\text{radar}} = 24$ cm. An examination of the power spectral density of the surface slope shows that the p.s.d. is down by a factor of 10^{-2} from the peak value at the wave number appropriate to first

order Born scattering. Consequently, the intensity of second order Born scattering should be about 10^2 times that of first order Born scattering.

So, if we modify our scattering theory to include higher order effects, there is no inconsistency between the location of the intense radar returns within the wake and the directly observed wake structure. Obviously, one should combine the observed wake structure with a radar scattering model to obtain a predicted radar wake structure and attempt a detailed comparison with the observed radar wake images. An important missing element is a two-dimensional map of the wake structure since that is what really enters the radar cross-section. We have used a one-dimensional wake crossing measurement for rough comparison purposes, but must be aware that surprises may occur when we confront the two-dimensional data derived from photographic images of the wake.

V. Conclusions

These are based on a simplified scattering model and some questionable assumptions as to the nature of the scattering field. The scattering model can be readily improved. Thus with an increase in the complexity of the formula intrinsically electromagnetic effects (such as polarization, Fresnel diffractions, and dielectric properties can be included. This hardly seems warranted till more is known about the hydrodynamic structure of the wake.

Two hydrodynamic descriptions have been used.

- (a) The idealized mathematical Kelvin wake.
- (b) Some estimates have been made using the Dabob Bay data.

Our conclusion is that first order Bragg theory is not generally adequate. At some viewing angles there will be strong first order Bragg scattering with a sharp angular dependence. At other angles first order Bragg scattering will be small. However, there can be second order Bragg scattering of an intensity comparable to that where first order is large. The angular width of the second order observations should be greater than that of first order, but not necessarily dramatically so.

The main limitations on our present work is that only special directions of look are adequately described. Dabob Bay experiments are closest to what are considered.

To compute what should be observed at other aspect angles empirical two dimensional wave height spectra are needed. Given these the conclusions drawn about angular sharpness might be modified. These also might help us to understand the experiment observations at different aspect angles.

Some of the needed information could perhaps be obtained by reworking the Dabob Bay data. Also some of this might be obtained from the NOSC data.

DISTRIBUTION LIST

Dr. Merv Atkins
Deputy Director, Science & Tech.
Defense Nuclear Agency
Washington, D.C. 20305

National Security Agency
Attn RS: Dr. N. Addison Ball
Ft. George G. Meade, MD 20755

Mr. Anthony Battista [3]
House Armed Services Committee
2120 Rayburn Building
Washington, D.C. 20515

Mr. Steve Borchardt
Dynamics Technology
Suite 200
22939 Hawthorne Boulevard
Torrance, CA 90505

Mr. Rod Buntzen
NOSC
Code 1603B
San Diego, CA 92152

Dr. Curtis G. Callan, Jr.
Department of Physics
Princeton University
Princeton, NJ 08540

Mr. Gerald Cann
Principal Assistant Secretary
of the Navy (RES&S)
The Pentagon, Room 4E736
Washington, D.C. 20350

Dr. Kenneth M. Case
The Rockefeller University
New York, New York 10021

Dr. Robert Cooper [2]
Director, DARPA
1400 Wilson Boulevard
Arlington, VA 22209

Dr. Roger F. Dashen
Institute for
Advanced Study
Princeton, NJ 08540

Dr. Russ E. Davis
Scripps Institution
of Oceanography
(A-030), 301 NORPAX, UCSD
La Jolla, CA 92093

Defense Technical Information [2]
Center
Cameron Station
Alexandria, VA 22314

The Honorable Richard DeLauer
Under Secretary of Defense (R&E)
Office of the Secretary of
Defense
The Pentagon, Room 3E1006
Washington, D.C. 20301

Director [4]
National Security Agency
Fort Meade, MD 20755
ATTN: Mr. Richard Foss, A05

CAPT Craig E. Dorman
Department of the Navy, OP-095T
The Pentagon, Room 5D576
Washington, D.C. 20350

CDR Timothy Dugan
NFOIO Detachment, Sultland
4301 Sultland Road
Washington, D.C. 20390

Dr. Frank Fernandez
ARETE Assoc.
P.O. Box 350
Encino, CA 91316

DISTRIBUTION LIST

(Continued)

Mr. Richard Gasparouic
APL
Johns Hopkins University
Laurel, MD 20707

Dr. Larry Gershwin
NIO for Strategic Programs
P.O. Box 1925
Washington, D.C. 20505

Dr. S. William Gouse, W300
Vice President and General
Manager
The MITRE Corporation
1820 Dolley Madison Blvd.
McLean, VA 22102

Dr. Edward Harper [10]
SSBN, Security Director
OP-021T
The Pentagon, Room 4D534
Washington, D.C. 20350

Mr. R. Evan Hineman
Deputy Director for Science
& Technology
P.O. Box 1925
Washington, D.C. 20505

Dr. Richard Heglund
Operations Research Inc.
Room 428
1400 Spring Street
Silver Spring, MD 20910

Mr. Ben Hunter [2]
CIA/DDS&T
P.O. Box 1925
Washington, D.C. 20505

The MITRE Corporation [25]
1820 Dolley Madison Blvd.
McLean, VA 22102
ATTN: JASON Library, W002

Mr. Jack Kalish
Deputy Program Manager
The Pentagon
Washington, D.C. 20301

Mr. John F. Kaufmann
Dep. Dir. for Program Analysis
Office of Energy Research, ER-31
Room F326
U.S. Department of Energy
Washington, D.C. 20545

Dr. George A. Keyworth
Director
Office of Science & Tech. Policy
Old Executive Office Building
17th & Pennsylvania, N.W.
Washington, D.C. 20500

Mr. Jerry King [3]
RDA
P.O. Box 9695
Marina del Rey, CA 90291

MAJ GEN Donald L. Lamberson
Assistant Deputy Chief of Staff
(RD&A) HQ USAF/RD
Washington, D.C. 20330

Dr. Donald M. Levine, W385 [3]
The MITRE Corporation
1820 Dolley Madison Blvd.
McLean, VA 22102

Mr. V. Larry Lynn
Deputy Director, DARPA
1400 Wilson Boulevard
Arlington, VA 22209

DISTRIBUTION LIST

(Continued)

Dr. Joseph Mangano (2)
DARPA/DEO
9th floor, Directed Energy Office
1400 Wilson Boulevard
Arlington, VA 22209

Mr. Walt McCandless
4608 Willet Drive
Annandale, VA 22003

Mr. John McMahon
Dep. Dir. Cen. Intelligence
P.O. Box 1925
Washington, D.C. 20505

Director
National Security Agency
Fort Meade, MD 20755
ATTN: William Mehuron, DDR

Dr. Marvin Moss
Technical Director
Office of Naval Research
800 N. Quincy Street
Arlington, VA 22217

Dr. Walter H. Munk
9530 La Jolla Shores Drive
La Jolla, CA 92037

Dr. Julian Nell (2)
P.O. Box 1925
Washington, D.C. 20505

Director
National Security Agency
Fort Meade, MD 20755
ATTN: Mr. Edward P. Neuburg
DDR-FANX 3

Prof. William A. Nierenberg
Scripps Institution of
Oceanography
University of California, S.D.
La Jolla, CA 92093

Dr. John Penhune
Science Applications, Inc.
MS-8
1200 Prospect Street
La Jolla, CA 92038

The MITRE Corporation
Attn: Records Resources
1820 Dolley Madison Boulevard
McLean, VA 22102

Mr. Alan J. Roberts
Vice President & General Manager
Washington C³ Operations
The MITRE Corporation
1820 Dolley Madison Boulevard
Box 208
McLean, VA 22102

Los Alamos Scientific Laboratory
ATTN: C. Paul Robinson
P.O. Box 1000
Los Alamos, NM 87545

Mr. Richard Ross (2)
P.O. Box 1925
Washington, D.C. 20505

Mr. Richard Ruffine
OUSDRE
Offensive & Space Systems
The Pentagon, Room 3E129
Washington, D.C. 20301

Dr. Phil Selwyn
Technical Director
Office of Naval Technology
800 N. Quincy Street
Arlington, VA 22217

Dr. Eugene Sevin (2)
Defense Nuclear Agency
Washington, D.C. 20305

DISTRIBUTION LIST

(Concluded)

Mr. Robert Shaffer
House Arms Services
Room 2343
Rayburn Office Building
Washington, D.C. 20515

Mr. Omar Shemdin
JPL
Mail Stop 183501
4800 Oak Grove Drive
Pasadena, CA 91109

Mr. Robert Shuckman
P.O. Box 8618
Ann Arbor, MI 48107

Dr. Joel A. Snow [2]
Senior Technical Advisor
Office of Energy Research
U.S. DOE, M.S. E084
Washington, D.C. 20585

Mr. Alexander J. Tachmindji
Senior Vice President & General
Manager
The MITRE Corporation
P.O. Box 208
Bedford, MA 01730

Dr. Vigdor Tepilitz
ACDA
320 21st Street, N.W.
Room 4484
Washington, D.C. 20451

Mr. Anthony J. Tether
DARPA/STO
1400 Wilson Boulevard
Arlington, VA 22209

Dr. Al Trivelpiece
Director, Office of Energy
Research, U.S. DOE
M.S. 6E084
Washington, D.C. 20585

Mr. Marshal Tulin
Dept. of Mechanical Eng.
University of California
Santa Barbara, CA 93106

Dr. John F. Vesecky
Center for Radar Astronomy
233 Durand Building
Stanford University
Stanford, CA 94305

Mr. James P. Wade, Jr.
Prin. Dep. Under Secretary of
Defense for R&E
The Pentagon, Room 3E1014
Washington, D.C. 20301

Dr. Kenneth M. Watson
2191 Caminito Circulo Norte
La Jolla, CA 92037

Mr. Robert Winokur
Director, Planning & Assess.
Office of Naval Research
800 N. Quincy Street
Arlington, VA 22217

Mr. Leo Young
OUSDRE (R&AT)
The Pentagon, Room 3D1067
Washington, D.C. 20301

Dr. Fredrik Zachariasen (452-48)
California Institute
of Technology
1201 East California Street
Pasadena, CA 91125

END

FILMED

1-85

DTIC