

AD-A148 320 CHARACTERISTICS OF THE CLASS OF 1988 DUTY-HONOR-COUNTRY 1/1

(U) MILITARY ACADEMY WEST POINT NY OFFICE OF
INSTITUTIONAL RESEARCH M SAUNDERS SEP 84

UNCLASSIFIED

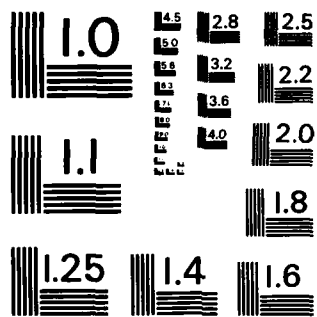
USMA-OIR-84-012

F/G 5/2

NL



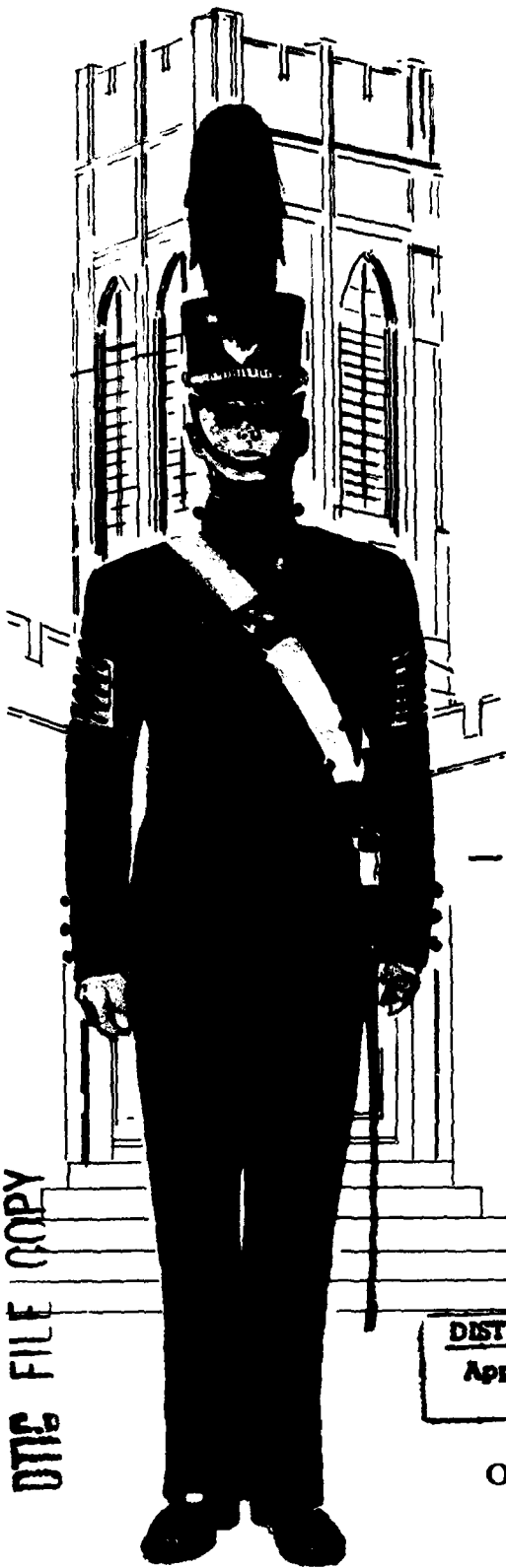
END
FBI
DTC



MICROCOPY RESOLUTION TEST CHART
NATIONAL BUREAU OF STANDARDS-1963-A

2

84-012



UNITED STATES MILITARY ACADEMY

WEST POINT, NEW YORK

AD-A148 320

CHARACTERISTICS OF THE CLASS OF 1988

DTIC FILE COPY

DTIC ELECTE
DEC 7 1984
S B D

DISTRIBUTION STATEMENT A
Approved for public release;
Distribution Unlimited

OFFICE OF INSTITUTIONAL RESEARCH

SEPTEMBER 1984

DUTY-HONOR-COUNTRY

84 11 14 137

Characteristics of the Class of 1988

Report No. :USMA-OIR-84-012
Project No. :526
Prepared by :Ms. Mary H. Saunders
Programmers :Data Support Branch
Typist :Mrs. Carol A. Durham
September 1984

ABSTRACT

This report presents the biographical characteristics and achievements of the 1,401 new cadets who entered the United States Military Academy in the Class of 1988.

NOTE: Any conclusions in this report are not to be construed as official U.S. Military Academy or Department of the Army positions unless so designated by other authorized documents.

OFFICE OF INSTITUTIONAL RESEARCH
UNITED STATES MILITARY ACADEMY
WEST POINT, NEW YORK 10996

TABLE OF CONTENTS

	Page
Preface	1
Table	
1 Distribution of Scores on Academic Qualification Measures (Admitted by CEER)	2
2 Distribution of Scores on Academic Qualification Measures (Admitted by ACEER).	2
3 Distribution of ACEER Scores (Admitted by ACT Scores).	3
4 Distribution of Scores on PAE, LPS and HSR (All Admitted Cadets) .	4
5 Distribution of Whole Candidate Scores (All Admitted Cadets) . . .	5
6 Means and Standard Deviations of Scores of Male and Female Cadets	6
7 Distribution of Height and Weight	7
8 High School Characteristics.	8
9 Awards and Scholarships	8
10 Scholarships	9
11 Clubs and Positions Held or Awards Obtained	10
12 Nominations and Appointments	11
13 Father's Military Status and Rank	12
14 Class Year of Fathers Who are USMA Graduates	13
15 Sport Participation.	13
16 Miscellaneous	14
Report Documentation Page (DD Form 1473)	15

Preface

This report presents the biographical characteristics and achievements of the 1,401 new cadets who entered the Class of 1988. The admission scores listed in Table 1 are for the 966 cadets whose admission was based on the CEER, while Tables 2 and 3 are for the 435 cadets whose admission was based on American College Test scores. The following abbreviations, explanations and definitions of terms apply in this report.

- CEER A statistically derived weighted composite score of two College Entrance Examination Board Tests (Scholastic Aptitude Test-Verbal, Scholastic Aptitude Test-Mathematics, and a standardized high school rank score.
- High School Rank This is a score derived by converting the actual high school rank to a standard score, using a formula developed by the Educational Testing Service.
- Whole Candidate Score This is a weighted composite score of the CEER or ACEER, the Physical Aptitude Examination score and the Leadership Potential Score.
- Physical Aptitude Examination Score This is a standardized score developed to measure physical capabilities.
- Leadership Potential Score This is a score derived from the ratings of the candidate by his/her secondary school teachers and evaluations by admissions officials of his/her type of participation in athletic and other school and community activities.
- ACT American College Testing Program.
- ACEER A statistically derived weighted composite score of ACT tests and high school rank converted to the 200-800 range of the CEER.



Accession For	
NTIS GRA&I	<input checked="" type="checkbox"/>
DTIC TAB	<input type="checkbox"/>
Unannounced	<input type="checkbox"/>
Justification	
By _____	
Distribution/	
Availability Code	
Dist	Avail and/or Special
A-1	

TABLE 1

Distribution of Scores on Academic Qualification Measures
(For those admitted by use of CEER)

Score Ranges	Scholastic Aptitude Verbal		Scholastic Aptitude Mathematics		CEER	
	N	Cum %	N	Cum %	N	Cum %
750-800	6	100%	43	100%	10	100%
700-749	40	99	149	96	43	99
650-699	94	95	253	80	157	94
600-649	184	86	258	54	312	78
550-599	227	66	187	27	255	46
500-549	275	43	63	8	150	20
450-499	105	14	13	1	35	4
400-449	29	4	0	0	4	0
350-399	6	0	0	0	0	0
Total	966		966		966	
Mean	565		637		603	
S.D.	72		65		60	

TABLE 2

Distribution of Scores on Academic Qualification Measures
(For those admitted by use of ACEER)

Score Ranges	ACT-ENG		ACT-MATH		ACT-N.S.		ACT-S.S	
	N	Cum %	N	Cum %	N	Cum %	N	Cum %
34-36	0	100%	64	100%	18	100%	6	100%
31-33	18	100	94	85	189	96	63	99
28-30	55	96	116	64	119	52	91	84
25-27	113	83	118	37	74	25	112	62
22-24	178	57	41	10	20	8	102	36
19-21	62	16	2	0	6	3	29	12
16-18	9	2	0	0	6	2	10	5
13-15	0	0	0	0	2	0	7	3
10-12	0	0	0	0	0	0	4	1
Total	435		435		434		424	
Mean	24.4		29.2		29.4		26.0	
S.D.	3.1		3.6		3.5		4.4	

TABLE 3
Distribution of ACEER Scores
(For those admitted by use of ACT scores)

Score Ranges	ACEER	
	N	Cum %
750-800	1	100%
700-749	20	100
650-699	82	95
600-649	129	76
550-599	116	47
500-549	71	20
450-499	16	4
400-449	0	0
Total	435	
Mean	603	
S.D.	60	

TABLE 4
Distribution of Scores on PAE, LPS and HSR
(For all admitted cadets)

Score Ranges	Physical Aptitude* (PAE)		Female		Leadership Potential (LPS)		High School Rank (HSR)	
	Male N	Male %	N	%	N	Cum %	N	Cum %
750-800	21	100%	0	100%	2	100%	92	100%
700-749	53	98	4	100	49	100	85	93
650-699	132	94	4	98	190	96	210	87
600-649	207	83	18	95	392	83	231	72
550-599	278	67	29	84	426	55	238	56
500-549	299	44	40	65	223	24	265	39
450-499	184	20	28	40	94	8	143	20
400-449	58	5	32	23	22	2	84	10
350-399	0	0	4	2	3	0	37	4
300-349	2	0	0	0	0	0	10	1
250-299	2	0	0	0	0	0	4	0
200-249	1	0	0	0	0	0	2	0
Total	1238		159		1401		1401	
Mean	569		520		590		575	
S.D.	81		78		63		105	

*Distribution of PAE scores are shown separately for male and female cadets as they are scored on different events. Four male cadets did not have PAE scores at entrance on 2 July - 3 foreign cadets and one athlete.

TABLE 5
Distribution of Whole Candidate Scores
(For all admitted cadets)

<u>Score Ranges</u>	<u>N</u>	<u>Cum %</u>
7250-7499	1	100%
7000-7249	3	100
6750-6999	16	100
6500-6749	74	99
6250-6499	211	93
6000-6249	390	78
5750-5999	315	50
5500-5749	225	28
5250-5499	115	12
5000-5249	39	4
4750-4999	11	1
4500-4749	1	0
Total	1401	
Mean	5964	
S.D.	381	

TABLE 6
Means and Standard Deviations of Scores
of Male and Female Cadets

	WCS		HSR		LPS		PAE*	
	<u>Male</u>	<u>Female</u>	<u>Male</u>	<u>Female</u>	<u>Male</u>	<u>Female</u>	<u>Male</u>	<u>Female</u>
N	1242	159	1242	159	1242	159	1238	159
Mean	5964	5963	570	609	590	591	569	520
S.D.	382	382	104	101	64	58	81	78

	ACEER		CEER		SAT-V		SAT-M	
	<u>Male</u>	<u>Female</u>	<u>Male</u>	<u>Female</u>	<u>Male</u>	<u>Female</u>	<u>Male</u>	<u>Female</u>
N	378	57	864	102	864	102	864	102
Mean	605	593	602	617	563	584	638	624
S.D.	60	61	60	64	72	70	65	64

	ACT-EN		ACT-MA		ACT-NS		ACT-SS	
	<u>Male</u>	<u>Female</u>	<u>Male</u>	<u>Female</u>	<u>Male</u>	<u>Female</u>	<u>Male</u>	<u>Female</u>
N	378	57	378	57	377	57	367	57
Mean	24.3	25.3	29.4	28.0	29.6	28.3	26.2	25.0
S.D.	3.1	3.0	3.7	3.1	3.3	4.3	4.2	5.0

*PAE scale for females is not the same as the scale for males.

TABLE 7-1
Distribution of Height and Weight
(Female Cadets)

Height			Weight		
<u>Inches</u>	<u>No.</u>	<u>%</u>	<u>Pounds</u>	<u>No.</u>	<u>%</u>
72-73	1	0.6%	161-170	3	1.9
70-71	5	3.1	151-160	6	3.8
68-69	24	15.1	141-150	18	11.3
66-67	51	32.1	131-140	39	24.5
64-65	40	25.2	121-130	46	28.9
62-63	32	20.1	111-120	34	21.4
60-61	5	3.1	101-110	11	6.9
58-59	1	0.6	90-100	2	1.3
Total	159	100	Total	159	100
Mean	65.4		Mean	128.7	
S.D.	2.4		S.D.	13.6	

TABLE 7-2
Distribution of Height and Weight
(Male Cadets)

Height			Weight		
<u>Inches</u>	<u>No.</u>	<u>%</u>	<u>Pounds</u>	<u>No.</u>	<u>%</u>
80-81	1	0.1%	261-270	1	0.1%
78-79	6	0.5	251-260	2	0.2
76-77	30	2.4	241-250	3	0.2
74-75	109	8.8	231-240	5	0.4
72-73	250	20.1	221-230	9	0.7
70-71	373	30.0	211-220	14	1.1
68-69	270	21.7	201-210	28	2.3
66-67	144	11.6	191-200	56	4.5
64-65	46	3.7	181-190	83	6.7
62-63	10	0.8	171-180	145	11.7
60-61	3	0.2	161-170	199	16.0
			151-160	246	19.8
			141-150	219	17.6
			131-140	138	11.1
			121-130	75	6.0
			111-120	16	1.3
			101-110	3	0.2
Total	1242	100	Total	1242	100
Mean	69.7		Mean	156.9	
S.D.	3.1		S.D.	24.1	

TABLE 8
High School Characteristics

	Number	Percent
Type of High School attended in Senior Year		
Public (Include HS in Foreign Country).....	1127	81%
Private (Non-Military).....	211	15
Private (Military).....	25	2
Rank in Graduating Class		
Top 20%.....	1162	83%
Second 20%.....	159	12
Middle 20%.....	50	4
Fourth 20%.....	11	1
Bottom 20%.....	5	0
Selected as Valedictorian (First in the Class).....	102	7
Selected as Salutatorian (Second in the Class).....	78	6
Number of High Schools Attended		
One.....	1126	81%
Two.....	218	16
Three.....	32	2
Four or more.....	14	1
Five or more.....	4	0

TABLE 9
Awards and Scholarships

	Number	Percent
Received Following Awards		
National Honor Society.....	858	61%
Bausch and Lomb Science Award.....	43	3
American Legion Award.....	146	10
Boy's State or Girl's State Delegate.....	297	21
Took the National Merit/Achievement Scholarship Examination		
Yes, and Received Commendation.....	250	18%
Yes, was Semi-Finalist.....	35	2
Yes, was Finalist.....	41	3
Yes, was Merit Scholar.....	24	2

TABLE 10
Scholarships

	Number	Percent
Number of Academic Scholarships		
None.....	750	54%
One.....	295	21
Two or Three.....	274	20
Four or Five.....	47	3
Six or More.....	29	2
Number of Athletic Scholarships		
None.....	1234	88%
One.....	81	6
Two or Three.....	52	4
Four or Five.....	11	1
Six or More.....	12	1
Received the Following Military Scholarships*		
Army ROTC Scholarship.....	249	18%
Navy ROTC Scholarship.....	216	16
Air Force ROTC Scholarship.....	153	11
Other ROTC Scholarship.....	60	4

*May be more than one.

TABLE 11

Clubs and Positions Held or Awards Obtained

	Number	Percent
Elected or Appointed to Following High School Positions*		
President of High School Senior Class.....	90	6%
Senior Class Officer (Other Than President).....	224	16
President, Student Body.....	81	6
President, High School Class (Other than Senior Class)....	162	12
President, Student Council.....	92	7
Participated in or Held Following High School Positions*		
Debating or Forensic Society.....	192	14%
Thespian or Dramatic Club.....	228	16
Glee Club.....	134	10
High School Band.....	295	21
Staff, School Paper.....	258	18
Editor or Co-Editor, School Paper.....	103	7
Staff, Yearbook or Annual.....	229	16
Editor or Co-Editor, Yearbook or Annual.....	77	6
Presently is or has Been One of the Following*		
Boy Scout/Girl Scout.....	623	45%
Explorer Scout.....	116	8
Sea Scout.....	6	1
Air Scout.....	7	1
Campfire Girl.....	15	1
Camp Counselor.....	172	12
Order of the Arrow.....	133	10
Eagle Scout (Boys).....	113	9
First Class Scout (Girls).....	10	6

*May be more than one.

TABLE 12
Nominations and Appointments

	Number	Percent
Federal Academies Where Nomination was Attempted*		
Naval Academy.....	429	31%
Air Force Academy.....	394	28
Coast Guard Academy.....	145	10
Merchant Marine Academy.....	66	5
Federal Academies Where Appointment was Received*		
Naval Academy.....	77	6
Air Force Academy.....	85	6
Coast Guard Academy.....	55	4
Merchant Marine Academy.....	72	5
First Choice of Schools was		
US Military Academy.....	1190	85
US Air Force Academy.....	95	7
US Naval Academy.....	36	3
US Coast Guard Academy.....	3	0
US Merchant Marine Academy.....	2	0
A Civilian Liberal Arts College.....	31	2
A Civilian Engineering Technical College.....	22	2
Another Type of College.....	14	1

*May be more than one.

TABLE 13
Father's Military Status and Rank

Father's Past Military Service and Current Status	Number	Percent
No Military Service or Don't Know.....	541	39%
Career in Military Service Terminated for Physical Disability.....	19	1
Served 20 Years or More and Retired.....	99	7
Now on Full Time Active Duty.....	89	6
Served at One Time but No Longer In Service.....	603	43
Now in Reserves or National Guard.....	39	3
Died While on Active Duty.....	5	0
 Father's Highest Grade**		
E1 - E3 (Private or PFC).....	103	7
E4 - E6 (Corporal Through Staff Sergeant).....	240	17
E7 - E9 (Platoon Sergeant Through Sergeant Major).....	69	5
Warrant Officer.....	15	1
Lieutenant or Captain.....	79	6
Major.....	31	2
Lieutenant Colonel.....	61	4
Colonel.....	52	4
General Officer.....	6	0

**Army grade or AF, Navy and Marine Corps equivalent.

TABLE 14
Class Year of Fathers Who Are USMA Graduates

<u>Year</u>	<u>No.</u>	
1966	1	
1965	3	
1964	6	
1963	3	
1962	5	
1961	8	
1960	7	
1959	3	
1958	1	
1957	1	
1956	1	
1955	1	
1954	1	
1953	3	
1952	1	
1950	1	
1948	1	Total 47

TABLE 15
Sport Participation

	<u>Number</u>	<u>Percent</u>
Participated in Varsity Athletics.....	1275	91%
Earned Varsity Letter.....	1190	85
Varsity Team Captain.....	692	50

TABLE 16
Miscellaneous

	<u>Number</u>	<u>Percent</u>
Taken College Level Courses After High School in One of the Following		
A Junior, Community, Extension or Branch College With a One or Two-Year Program Only.....	62	4%
Other Institution With Less Than a Four-Year Program.....	5	0
A Four-Year College, Not Part of a University.....	21	2
A University, Including its Separate Colleges.....	81	6
Not Applicable.....	1224	88
Attended U.S. Military Academy Preparatory School.....	199	14

REPORT DOCUMENTATION PAGE		READ INSTRUCTIONS BEFORE COMPLETING FORM
1. REPORT NUMBER USMA-OIR-84-012	2. GOVT ACCESSION NO.	3. RECIPIENT'S CATALOG NUMBER
4. TITLE (and Subtitle) Characteristics of the Class of 1988	5. TYPE OF REPORT & PERIOD COVERED	
	6. PERFORMING ORG. REPORT NUMBER	
7. AUTHOR(s) Ms. Mary Saunders	8. CONTRACT OR GRANT NUMBER(s)	
9. PERFORMING ORGANIZATION NAME AND ADDRESS Office of Institutional Research United States Military Academy West Point, New York 10996	10. PROGRAM ELEMENT, PROJECT, TASK AREA & WORK UNIT NUMBERS Project No. 526	
11. CONTROLLING OFFICE NAME AND ADDRESS Same as #9 above.	12. REPORT DATE September 1984	
	13. NUMBER OF PAGES	
14. MONITORING AGENCY NAME & ADDRESS (if different from Controlling Office) United States Military Academy West Point, New York, 10996	15. SECURITY CLASS. (of this report) Unclassified	
	15a. DECLASSIFICATION/DOWNGRADING SCHEDULE	
16. DISTRIBUTION STATEMENT (of this Report) Approved for public release; distribution unlimited.		
17. DISTRIBUTION STATEMENT (of the abstract entered in Block 20, if different from Report)		
18. SUPPLEMENTARY NOTES		
19. KEY WORDS (Continue on reverse side if necessary and identify by block number) Achievements Freshmen Admission Scores Class of 1988 Analysis Characteristics		
20. ABSTRACT (Continue on reverse side if necessary and identify by block number) This report presents the biographical characteristics and achievements of the 1,401 new cadets who entered the United States Military Academy in the Class of 1988.		

END

FILMED

1-85

DTIC