

AD-R143 509

BINUCLEAR 'CLAMSHELL' METALLOPHTHALOCYANINES(U) YORK
UNIV DOWNSVIEW (ONTARIO) DEPT OF CHEMISTRY
C C LEZNOFF ET AL. JUL 84 TR-27 N00014-78-C-0592

1/1

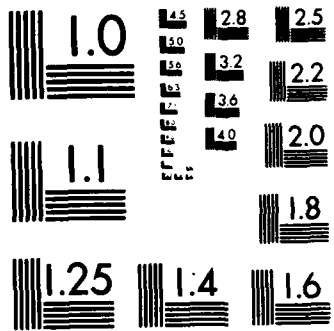
UNCLASSIFIED

F/G 7/3

NL



END
...
BIC



MICROCOPY RESOLUTION TEST CHART
NATIONAL BUREAU OF STANDARDS-1963-A

9

AD-A143 509

OFFICE OF NAVAL RESEARCH
Contract N00014-78-C-0592
Task No. NR 051-693
TECHNICAL REPORT NO. 27

Binuclear 'Clamshell' Metallophthalocyanines

BY
C.C. Leznoff*, S. Greenberg, S.M. Marcuccio
P.C. Minor, P. Seymour and
A.B.P. Lever*

Prepared for Publication
in
Inorg. Chim. Acta

York University
Department of Chemistry
Downsview (Toronto)
Ontario M3J-1P3

DTIC
ELECTE
JUL 25 1984
S B

Reproduction in whole or in part is permitted for
any purpose of the United States Government.

This document has been approved for public release
and sale; its distribution is unlimited.

DTIC FILE COPY

REPORT DOCUMENTATION PAGE		READ INSTRUCTIONS BEFORE COMPLETING FORM	
1. REPORT NUMBER 27	2. GOVT ACCESSION NO. AD-A143509	3. RECIPIENT'S CATALOG NUMBER	
4. TITLE (and Subtitle) Binuclear 'Clamshell' Metallophthalocyanines		5. TYPE OF REPORT & PERIOD COVERED Technical Report	
		6. PERFORMING ORG. REPORT NUMBER	
7. AUTHOR(s) C.C. Leznoff*, S. Greenberg, S.M. Marcuccio, P.C. Minor, P. Seymour and A.B.P. Lever*		8. CONTRACT OR GRANT NUMBER(s) N00014-78-C-0592	
9. PERFORMING ORGANIZATION NAME AND ADDRESS Department of Chemistry York University, Downsview, Ontario Canada M3J 1P3		10. PROGRAM ELEMENT, PROJECT, TASK AREA & WORK UNIT NUMBERS	
11. CONTROLLING OFFICE NAME AND ADDRESS Office of Naval Research 800 N. Quincy Arlington, VA 22217		12. REPORT DATE July, 1984	
		13. NUMBER OF PAGES 13	
14. MONITORING AGENCY NAME & ADDRESS (if different from Controlling Office)		15. SECURITY CLASS. (of this report) Unclassified	
		15a. DECLASSIFICATION/DOWNGRADING SCHEDULE	
16. DISTRIBUTION STATEMENT (of this Report) This document has been approved for public release and sale; its distribution is unlimited.			
17. DISTRIBUTION STATEMENT (of the abstract entered in Block 20, if different from Report)			
18. SUPPLEMENTARY NOTES Prepared for publication in the Journal of Inorg. Chim. Acta.			
19. KEY WORDS (Continue on reverse side if necessary and identify by block number) Phthalocyanine, Binuclear, Synthesis, UV, Electrochemistry, Photochemistry			
20. ABSTRACT (Continue on reverse side if necessary and identify by block number) Binuclear 'clamshell' phthalocyanines are characterised for the first time. The complexes exist in 'open' and 'closed' conformational forms. Electronic spectra and electrochemical data are reported.			

Binuclear 'Clamshell' Metallophthalocyanines

C.C. Leznoff^{*}, S. Greenberg, S.M. Marcuccio, P.C. Minor, P. Seymour and
A.B.P. Lever^{*}

Dept. of Chemistry, York University, Downsview (Toronto), Ontario,
Canada, M3J 1P3

and

K.B. Tomer,

Midwest Center for Mass Spectrometry, University of
Nebraska-Lincoln, Lincoln, NE 68588.

Polynuclear multi-electron transfer catalysts for photo- and electrocatalytic processes are becoming of increasing importance.

Porphyrin dimers [1-5] have been synthesized to study the electrocatalytic reduction of oxygen [3]. Usually these species permit the two-electron reduction of oxygen to hydrogen peroxide. The desired four-electron reduction to water has only been achieved with a specific di-cobalt cofacial porphyrin dimer [3]. Such systems are not very stable.

Phthalocyanines (Pc) are stable under thermal and photochemical conditions [6] and the four-electron reduction of oxygen is catalysed by Fe(II)Pc in alkali [7].

Binuclear phthalocyanines are expected to be much more efficient but their synthesis has been hindered by the notorious insolubility of phthalocyanine monomers. Polymeric Pcs and polymer bound Pc have been prepared to simulate the geometry of binuclear phthalocyanines but these systems are ill-defined and difficult to

optimise [8]. While substituted and soluble phthalocyanines have been prepared [9-12], well defined binuclear Pc systems have not previously been characterised.

We report here binuclear 'clamshell' metal free and metallated phthalocyanines which contain a stable five atom bridge, and which are freely soluble in many organic solvents.

4-Nitrophthalonitrile (1) [12,13] reacts with 2,2-dimethyl-1-propanol (neopentanol)(2) (Keller [14]) to yield 4-neopentoxyphthalonitrile (3). Conversion of 3 into its isoindoline 4 [15] and self-condensation of 4 in 2-N,N-dimethylaminoethanol gave, after flash chromatography [16] using toluene as eluant, 2,9,16,23-tetraneopentoxypthalocyanine (5a 45% yield) as a mixture of isomers [17]. Phthalocyanine 5a is soluble in organic solvents, indeed to the extent of 800g/L in methylene chloride. Conversion [6] of 5a into its copper(II) 5b, cobalt(II) 5c and zinc 5d [10,18] derivatives was readily achieved.

Soluble binuclear phthalocyanines were prepared by the generation of bisalkoxyphthalonitriles from symmetrical diols. Treatment [14] of 1 with 2,2-dimethyl-1,3-propanediol (6), and with 2-ethyl-2-methyl-1,3-propanediol (7) gave the bis-phthalonitriles

1,3-bis(3,4-dicyanophenoxy)-2,2-dimethylpropane (8) and 1,3-bis(3,4-dicyanophenoxy)-2-ethyl-2-methylpropane (9).

Compounds 8 and 9 were converted to their isoindolines (10 and 11 respectively) and condensed with an excess of 4 (25 equivalents) to give 1,3-bis(9,16,23-trineopentoxypthalocyaninoxy)-2,2-dimethylpropane (12a, 17% yield) and

1,3-bis(9,16,23-trineopentoxyphthalocyaninoxy)-2-ethyl-2-methylpropane (13, 10% yield) respectively, as a mixture of isomers [17], along with large amounts of monomer 5a. These binuclear complexes are also extremely soluble in organic solvents and can be readily separated from the monomer using flash chromatography and toluene/2-methoxyethanol mixtures previously described [12]. Metal free 12a was readily converted to the di-copper(II) 12b, and di-cobalt(II) 12c derivatives.

Compounds 3, 8 and 9 all gave parent ions in their mass spectra in the ET mode and phthalocyanines 5a+d, 12a+c and 13 (Fig.1) exhibited parent ions using the FAB technique [19,20].

These 'clamshell' species can be open with no interaction between Pc units or closed with Pc-Pc interaction. ESR, visible spectroscopy and electrochemistry (Tables 1,2) reveal that the metal complexes 12b,c exist normally in the closed form in equilibrium with a small amount of open form. Thus the monomeric systems 5b,c show esr and visible spectra in organic solvents typical of monomeric MPCs [6,20] (Table 2) and are models for the open form of the 'clamshell'. The electronic spectra of 12b,c show double $\pi\text{---}\pi^*$ bands near 650 nm (Q band) shifted to the blue, typical of aggregation [21]. The aggregation is intramolecular rather than intermolecular since it is almost unaffected by dilution. Increasing the temperature of a dichlorobenzene solution of 12c from 20°C to 70°C causes a small increase in the 673 nm (mainly open) transition, and a small decrease in the 626 nm (mainly closed) transition. Complex 12b behaves similarly. Addition of 1M pyridine (sufficient for five coordination [22])

does not open the di-cobalt(II) 'clamshell' 12c. However addition of stronger ligands such as cyanide ion or *n*-octylamine forms six coordinate open complexes (as followed by the loss of 620 nm Q band feature) which have undergone irreversible oxidation to an open di-cobalt(III) 'clamshell' 14 in air. Similarly addition of tetraethylammonium hydroxide to metal free 12 causes formation of the di-anion 12d which has an open conformation.

A closed conformation is expected to exhibit electrochemical redox couples at potentials negative with respect to the corresponding couples of the monomer [23]. However if the open-closed equilibrium is fast on the electrochemical time scale, the electrochemistry of the binuclear form may appear like that of the monomeric form. This is the case for the reduction potentials which require (Table 1) that the binuclear metal complexes 'open' before reduction. However 12c oxidises at a potential about 300 mV more negative than the monomer 5c, consistent with the closed conformation.

The monomer forms 5b,c show esr hyperfine coupling to the central metal, and super-hyperfine to equatorial nitrogen atoms [20,22]. The closed nature of binuclear 12b,c induces relaxation such that only broad unresolved signals are seen, centered near $g = 2$.

Unmetallated phthalocyanine fluoresces at 705 nm through emission from the $\pi\text{---}\pi^*$ singlet (Q) state. An equilibrium mixture of open and closed 'clamshell' 13 shows no significant room temperature emission from the closed component due to intramolecular self-quenching. However the small proportion of

open 'clamshell' 13 in equilibrium, does emit and indeed behaves exactly like a mononuclear unmetallated phthalocyanine [25]. Assuming, not unreasonably, that the molar intensity of emission of a fully open 'clamshell' 13 would be twice that of the corresponding mononuclear species 5a, it is possible to use the intensity of emission to determine the [closed]/[open] equilibrium constant. These constants are dependent upon solvent and vary from 70 in chloroform to 9 in o-dichlorobenzene (at room temperature).

At liquid nitrogen temperature the equilibrium is shifted almost totally to the closed form, and emission from the open form is only weakly detectable. However, under such conditions, weak emission from the closed form of 13 can be observed at 760nm. The energy shift of 1000 cm^{-1} is a measure of the energy of interaction between the two halves of the closed 'clamshell' 13.

Further details of the chemistry, electrocatalytic and photocatalytic properties of these unusual species will be published in due course.

Acknowledgements:- The authors (York) are indebted to the Natural Sciences and Engineering Research Council for financial support. ABPL and PCM are indebted to the Office of Naval Research (Washington) for support in a joint grant in collaboration with Prof.A.J.Bard (Texas). This work was also partially funded by the Midwest Center for Mass Spectrometry, a National Science Foundation Regional Instrumentation Facility (Grant No. CHE 8211164).

References

- 1 D.Jeyakumar and V.Krishnan, Nouv.J.Chim., 7, 697 (1983).
- 2 F.P.Schwarz, M.Gouterman, Z.Muljiani and D.H.Dolphin, Bioinorg.Chem., 2 1 (1972).
- 3 J.P.Collman, P.Denisevich, Y.Konai, M.Marrocco, C.Koval, and F.C Anson, J.Am.Chem.Soc., 102 (6027 (1980); ibid J.Electroanal.Chem 101, 117 (1979); J.P.Collman, F.C Anson, C.E.Barnes, C.S.Bencosme, T.Geiger, E.R.Evitt, R.P.Kreh, K.Meier, and R.B.Pettman, J.Am.Chem.Soc., 105, 2694 (1983).
- 4 (a) C.K.Chang, J.Am.Chem.Soc., 99, 2819 (1977) (b) N.E.Kagan, D.Mauzerall, and R.B.Merrifield, J.Am.Chem.Soc, 99, 5484 (1977).
- 5 J.E.Baldwin, M.J.Crossley, T.Klose, E.A.O'Rear, and M.K.Peters, Tetrahedron, 38 27 (1982).
- 6 A.B.P.Lever, Adv.Inorg.Chem.Radiochem., 7, 27 (1965).
- 7 J.Zagal, R.K.Sen and E.Yeager, J.Electroanal.Chem., 83, 207 (1977); J.Zagal, P.Bindra, and E.Yeager, J.Electrochem.Soc., 127 1506 (1980); E.Yeager, J.Zagal, B.Z.Nikolic and R.R.Adzic, Proc.Electrochem.Soc., 80 436 (1979).
- 8 M.Savy, P.Andro, G.Bernard and G.Magner, Electrochim.Acta, 19 403 (1974); 22 1315 (1977); NBS Special Publication No.455, (1975) 241; Inorg.Chem., 18 2560 (1979); J.Electroanal.Chem., 111 91 (1980).
- 9 (a) S.A.Mikhalenko, S.V.Barkanova, O.L.Lebedev, and E.A.Luk'yanets, Zh.Obshch.Khim., 41, 2735 (1971) (b) M.Hanack, J.Metz, and G.Pawlowski, Chem.Ber., 115, 2836 (1982).
- 10 (a) G.Pawlowski, and M.Hanack, Synthesis, 287 (1980) (b) C.Piechocki, J.Simon, A.Skoulios, D.Guillon, and P.Weber, J.Am.Chem.Soc., 102,

- 5245 (1982).
- 11 C.C.Leznoff, and T.W.Hall, Tetrahedron Lett., 23, 3023 (1982).
- 12 T.W.Hall, S.Greenberg, C.R.McArthur, B.Khouw and C.C.Leznoff, Nouv.J.Chim., 6, 653 (1982).
- 13 (a)H.D.K.Drew, and D.E.Kelly, J.Chem.Soc., 639 (1941)
(b)C.R.Rasmussen, J.F.Gardecki, J.N.Plampin, B.L.Twardzik, B.E.Reynolds, A.J.Molinari, N.Schwartz, W.W.Bennetts, B.E.Price, and J.J.Markowski, J.Med.Chem., 21, 1044 (1978).
- 14 T.M.Keller, T.R.Price, and J.R.Griffith, Synthesis, 613 (1980).
- 15 P.J.Beach, S.J.Grammatica, O.A.Ossanna, and L.Weinberger, J.Heterocyc.Chem., 7, 1403 (1970).
- 16 W.C.Still, K.Kahn, and A.Mitra, J.Org.Chem., 43, 2923 (1978).
- 17 Compounds 5a-d, 12a-c and 13, most likely exist as a mixture of positional isomers of which the given structures are but one representation.
- 18 Compound 5d was prepared by the condensation of 3 in the presence of $ZnCl_2$ directly by the procedure described in ref. 10a.
- 19 M.L.Gross, E.K.Chess, P.A.Lyon, F.W.Crow, S.Evans, and H.Tudge, Int.J.Spectrom.Ion.Phys., 42, 243 (1982).
- 20 Complete infrared, ultraviolet, 1H NMR, ^{13}C NMR and ESR, microanalytical and mass spectroscopic data will be presented in the full paper.
- 21 (a)H.Sigel, P.Waldmeier, and B.Prijs, Inorg.Nucl.Chem.Lett., 7, 161 (1971) (b)K.Bernauer and S.Fallab, Helv.Chim.Acta, 54, 1287 (1961) (c)R.D.Farina, D.J.Halko, and J.H.Swinehart, J.Phys.Chem., 76, 2343 (1972).
- 22 (a) P.C.Minor, Ph.D. Thesis, York University, (1983). (b)

- A.B.P.Lever, and P.C.Minor, Proc. IX Conference on Coordination Chemistry, (1983), Bratislava. (c) F.Cariati, D.Galizzioli, F.Morazzoni, and C.Busetto, J.Chem.Soc. 556 (1975); 496 (1976).
- 23 P.C.Minor and A.B.P.Lever, Inorg.Chem., 22, 826 (1983).
- 24 R.R.Gagne, C.A.Koval and G.C.Lisensky, Inorg.Chem., 19 2854 (1980).
- 25 Careful control experiments exclude the possibility that the room temperature emission arises from mononuclear contaminants.



Accession For	
NTIS GRA&I	<input checked="" type="checkbox"/>
DTIC TAB	<input type="checkbox"/>
Unannounced	<input type="checkbox"/>
Justification	
By _____	
Distribution/	
Availability Codes	
Dist	Avail and/or Special
A-1	

Table 1 Electrochemical Data

Species		Electrochemical Potentials ^a				
		Solvent	ML ⁺ /ML	M(II)L/M(I)L	ML/ML ⁻	ML ⁻ /ML ²⁻
Mononuclear derivatives						
H ₂	5a	DCB			-1.42(65)	-1.80(105)
Cu	5b	DCE			-1.37(80)	-1.75(90)
Co	5c	DCB	+0.36	-0.94(75)	-2 6(65)	(b)
Zn	5d	DCB	-0.02(95)		-1 5(75)	-1.83(75)
Binuclear derivatives						
Cu ₂	12b	DCB	+0.33 ^c		-1.53(95)	-1.80(115)
Co ₂	12c	DCB	+0.06	-0.95(75)	-2.07(100)	(b)

a) All potentials are with respect to the ferrocenium/ferrocene couple as internal calibrant in dichloroethane or dichlorobenzene as indicated using cyclic voltammetry and differential pulse voltammetry.²⁴ The mononuclear complex concentration was ca. 5 mM, and the binuclear complex ca. 2.5 mM, both with 0.5M tetrabutylammonium perchlorate as supporting electrolyte. Potentials may be referenced to NHE by adding 0.400V.

(b) No further redox couples observed before solvent 'cut-off'.

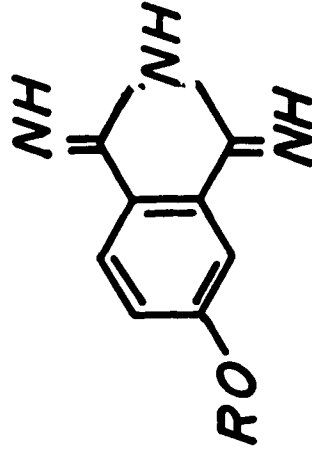
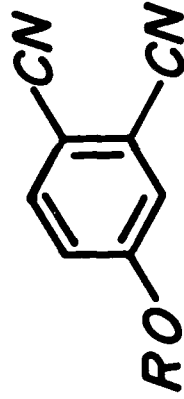
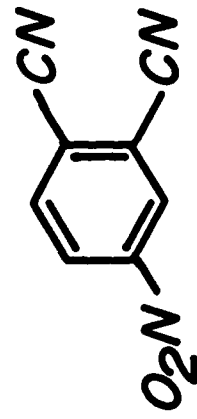
(c) A double wave was observed indicating stronger aggregation following oxidation. The potential reported is that of the better defined couple.

Table 2 Representative Electronic Spectra^a

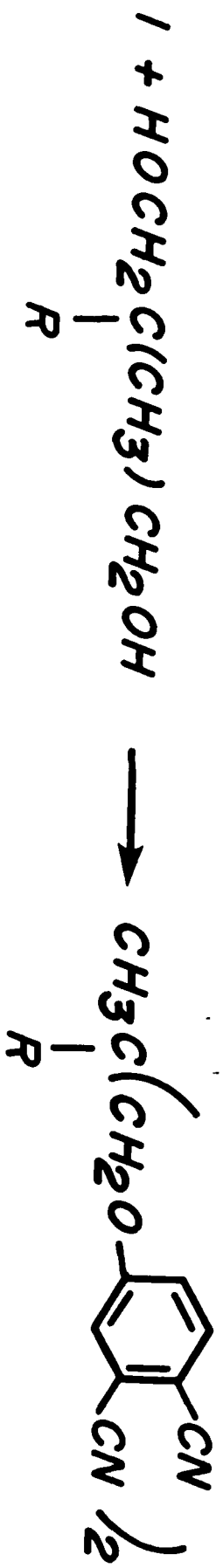
Species	Soret region		Q region		

Mononuclear derivatives (in dichloromethane)					
H ₂ 5a	341(4.57)	390(4.27)	608(4.17)	642(4.36)	670(4.73)
			705(4.79)		
Cu 5b	338(4.82)	380(4.42)	614(4.58)	680(5.09)	
Co 5c	335(4.74)	390(4.31)	620(4.52)	680(4.97)	
Zn 5d	344(4.91)	384(4.57)	614(4.60)	680(5.18)	
Binuclear derivatives (in dichloroethane)					
H ₂ 12a	337(5.01)	383(4.71)	612(4.79)	636(4.91)	668(4.83)
			701(4.70)		
Cu ₂ 12b	336(5.11)	396(4.72)	626(5.06)	676(4.93)	
Co ₂ 12c	320(5.00)	390(4.56)	626(4.93)	673(4.97)	

a) Reported in solvent indicated as λ_{\max} nm(log ϵ). In the mononuclear metallated complexes the lower wavelength of the two Q bands is a vibrational overtone. In the binuclear metallated complexes, the two Q bands arise as a consequence of the intramolecular aggregation and the presence of an open/closed equilibrium.



EDITOR - THESE NEED NOT BE PUBLISHED
(REFEREE) IF SPACE IS A PROBLEM

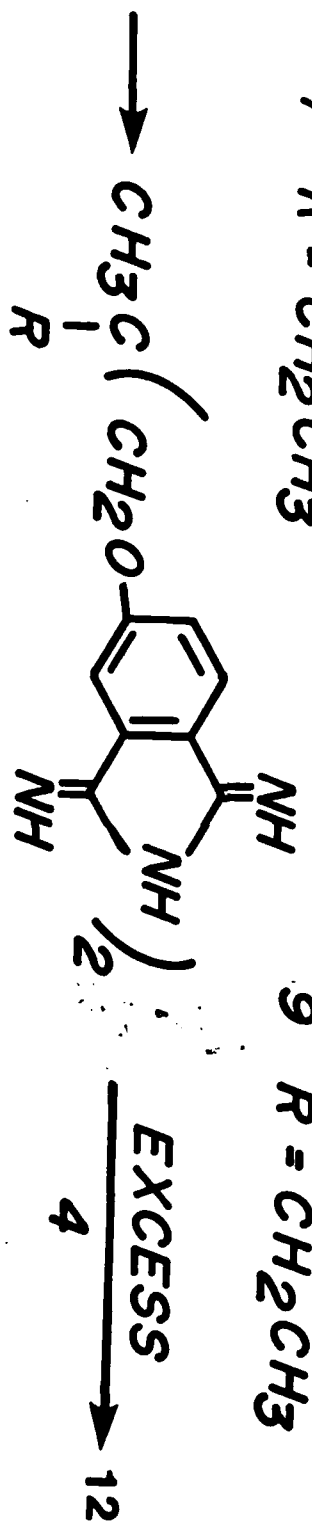


6 R = CH₃

8 R = CH₃

7 R = CH₂CH₃

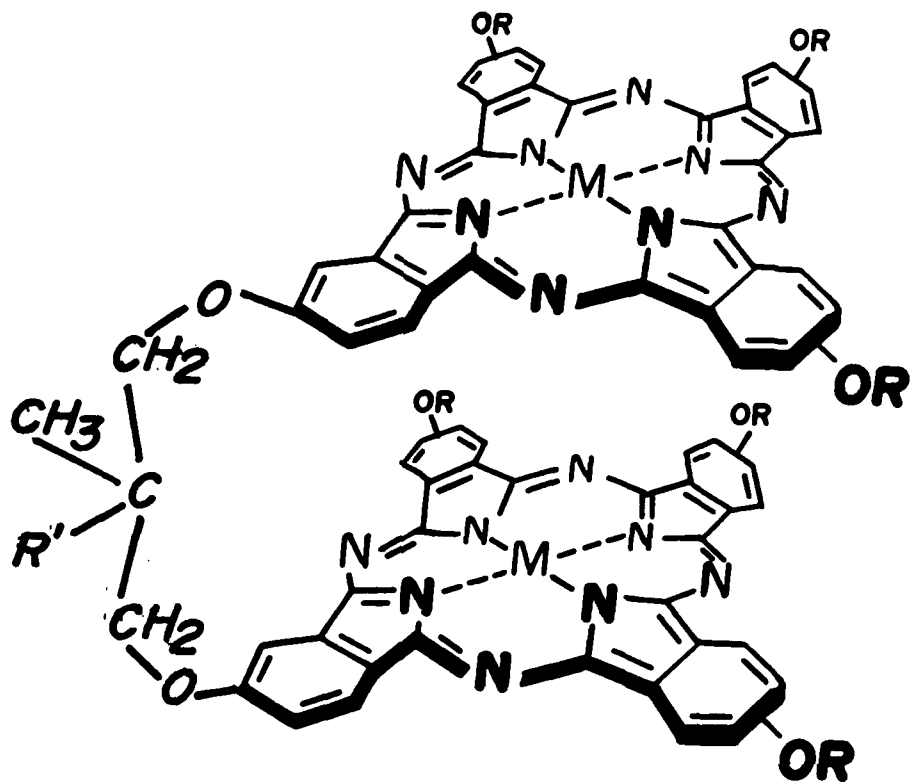
9 R = CH₂CH₃



10 R = CH₃

11 R = CH₂CH₃





12 a $R = \text{CH}_2\text{C}(\text{CH}_3)_3, R' = \text{CH}_3, M = \text{H}_2$

b $R = \text{CH}_2\text{C}(\text{CH}_3)_3, R' = \text{CH}_3, M = \text{Cu}$

c $R = \text{CH}_2\text{C}(\text{CH}_3)_3, R' = \text{CH}_3, M = \text{Co}$

13 $R = \text{CH}_2\text{C}(\text{CH}_3)_3, R' = \text{CH}_2\text{CH}_3, M = \text{H}_2$