

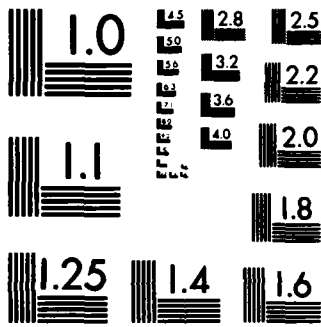
AD-A142 347 HIGH ENERGY BINDERS(U) MORTON THIOKOL INC BRIGHAM CITY 1/1
UT WASATCH DIV 21 JUN 83 N00014-82-C-0800

UNCLASSIFIED

F/G 11/1

NL





MICROCOPY RESOLUTION TEST CHART
NATIONAL BUREAU OF STANDARDS-1963-A

Thiokol Corporation, a Subsidiary of

MORTON THIOKOL, INC.

2415-83-M059

①

21 June 1983

Office of Naval Research
800 North Quincy Street
Arlington, VA 22217

APPROVED FOR PUBLIC RELEASE
DISTRIBUTION UNLIMITED

ATTENTION: Dr. R. S. Miller; Code 432

SUBJECT: Quarterly Letter No. 2: "High Energy Binders"
Covering Period: 1 March 1983 to 31 May 1983.
Contract N00014-82-C-0800; NR659-792
Thiokol Project: JM101

DTIC
ELECTE
JUN 20 1984
S D

Dear Dr. Miller

Research efforts have continued B

During this reporting period, we have continued our research effort in the areas of monomer synthesis, including non-energetic monomers for the thermoplastic elastomers, polymer synthesis, and polymer characterization. We also initiated the determination of reactivity ratios of new monomers and the thermal depolymerization/decomposition of polyethers by thermogravimetric analysis.

Two new monomers were synthesized during this reporting period for use in imparting internal plasticization to poly(THF). The first, 3-octoxymethyl-3-methyl-oxetane (OMMO) was readily prepared in high yield by the reaction of octyl bromide on the sodium salt of 3-hydroxymethyl-3-methyloxetane in dioxane. The second monomer, bis(methoxyethoxy methyl)oxetane (BMEMO) was prepared by the action of bis(chloromethyl)oxetane on the sodium salt of methoxyethanol in excess methoxyethanol. Both monomers were isolated at >99% purity by vacuum distillation from sodium hydride.

The polymer synthesis effort was divided between preparing simple low molecular weight energetic polyether glycols and relatively high copolymers for the thermoplastic elastomers. During the early part of this reporting period, we prepared two 100-gram batches of poly[bis(azidomethyl)oxetane/bis(nitratomethyl)oxetane] (BAMO/BNMO) and poly(nitratomethyl-methyloxetane) (NMMO). Both materials were divided into three batches for evaluation by ourselves and outside investigators. Samples of each of these polymers (25 grams) were shipped to Dr. R. Reed at China Lake and Dr. C. Gotzmer at Indian Head. Their individual results will be transmitted to you at the completion of their investigation. We submitted the remaining material to vacuum thermal stability and Taliani testing at our facility. Both polymers were evaluated against nitroglycerine (NG) and TMETN, with and without stabilizer (MNA). Initial results clearly show that both polymers are as stable or more stable than TMETN depending on the test and significantly more thermally stable than NG. Each polymer showed oven stability up to 130°C at which time self-heating occurred to fire at 208°C. This property is reflected by TMETN. Comparison of the two polymers shows that BAMO/BNMO is slightly more thermally stable than NMMO. In view of these encouraging results, we have scaled up poly(NMMO) to a one-pound quantity for formulation evaluation.

AD-A142 347

DTIC FILE COPY

DISTRIBUTION STATEMENT A

Approved for public release
Distribution Unlimited

84 06 19 124

In order to develop thermoplastic elastomer with highly elastomeric properties, we have synthesized two new polymers based on poly(THF) using OMMO and BMEMO as comonomers. ~~If our reasoning is correct, then a dramatic drop in viscosity should be noted over such polymers as THF/BMMO and THF/BEMO.~~ Therefore, two polymers were prepared: poly(THF/OMMO) and poly(THF/BMEMO) with a molecular weight of 20,000. Both polymers were found to have very low viscosity upon isolation and visually can be called internally plasticized. As time permits, each will be incorporated into a thermoplastic elastomer with poly(BEMO) as the crystalline block.

During the previous reporting period, we identified the components of our first-generation thermoplastic elastomer. Poly(BEMO) was elected as the crystalline block and the copolymer poly(THF/BMMO) as the rubbery block. Theoretical calculations lead us to synthesized specific block sizes for phase separation. During this reporting period, we have prepared six distinct block copolymers varying block size and block configuration. Block sizes for poly(BEMO) were 12,000 and 20,000 and poly(THF/BMMO) 20,000 and 35,000. Block configurations of ABA and (AB)_n were used for the above combinations of polymers. Blocks were linked via carbonated coupling employing phosgene in pyridine at 0°C. Initial results indicate that 20,000 BEMO produces too large a crystalline domain causing the material to be cheezy under stress. 35,000 poly(THF/BMMO) with 12,000 poly(BEMO) in an (AB)_n configuration appears to give very promising material. This polymer was extremely tough, 6,000 psi; Young's modulus $t_{-50^{\circ}\text{C}}$, and $T_{82^{\circ}\text{C}}$. To show its thermoplastic property, it was processed ten times by melt casting at 100°C and cooling to room temperature. Each time, the polymer was observed to retain its physical properties. Samples of these polymers, as polymer crumbs and melt cast sheets, have been supplied to Professor Sperling at Lehigh University for his evaluation of physical properties and morphology.

The reactivity ratio of nitratomethyl-methoxetane and bis(azidomethyl)oxetane was determined by our previously described method. The data was handled by a Hewlett-Packard 9825A computer. The Apple II program used for our previous work on the azido polymers was adapted to the H/P. The program and results are enclosed with this report and clearly show that copolymerization of azido and nitrate oxetanes will produce random insertion of each monomer.

$$R_1 \text{ BAMO} = 0.9346 \pm 0.1081$$

$$R_2 \text{ AMMO} = 1.1130 \pm 0.1683$$

$$R_1 \text{ NMMO} = 1.8909 \pm 0.1653$$

$$R_2 \text{ BAMO} = 2.4386 \pm 0.1427$$

Further monomer pairs will be examined during the next reporting period including nonenergetic cyclic ethers to enable the best copolymers to be synthesized for the thermoplastic elastomers.

To compliment the work being pursued at Lehigh University and Space Sciences, we have examined the thermal properties (depolymerization/decomposition) of polymer (BEMO) by thermogravimetric analysis (TGA). The TGA was calibrated using oxalic acid, the standard procedure. At 2°C/min a satisfactory calibration curve was observed for this standard. At heating rates greater than 2°C/min, the dehydration overlapped the decomposition portion of the curve. Poly(BEMO) was then analyzed

at 0.5, 2, 5, and 10°C/min in air and under nitrogen. It was immediately apparent that the analysis was extremely atmosphere dependent. The nitrogen atmosphere increased the "initial" temperature. The "initial" temperature is when the balance can first detect a change in mass. Repeated scans in nitrogen revealed initial temperatures between 205°C and 216°C. This inconsistency cannot be explained at this time but may be due to atmosphere loss on some runs.

Isothermal TGA curves were obtained at 125, 150, 175, 200, and 225°C under nitrogen. The lower temperature curves were straight lines for the mass versus time plots; however, the slope changed during the scan. The higher temperature scans were not straight lines and suggested that the order of the reaction changed with temperature. A more detailed report will be submitted when the completed data are assimilated. A DSC curve was obtained at 10°C/min with the sample in a large volume cell under air. An exotherm was observed at a significantly lower temperature (135°C) than by any of the "initial" temperatures observed by TGA (167°C).

During this reporting period, a presentation was given at the ONR Workshop held at the University of Massachusetts, April 5-6, 1983; and two abstracts were submitted for the upcoming JANNAF Propulsion Meeting.

1. "Novel Polyether Thermoplastic Elastomers for LOVA"
2. "Nitrate Ester Polyether Prepolymers"

Participating Personnel: Richard Fletcher, Graham Shaw, Earl Anderson, and Robert Hajik.

Sincerely

Gerald E. Manser
Associate Scientist
Propellant Research Department

GEM/lw

Attachment

Accession For	
NTIS GRA&I	<input checked="" type="checkbox"/>
DTIC TAB	<input type="checkbox"/>
Unannounced	<input type="checkbox"/>
Justification	
By _____	
Distribution/ _____	
Availability Codes	
Dist	Avail and/or Special
A-1	

DISTRIBUTION LIST

<u>ADDRESSEE</u>	<u>NO. OF COPIES</u>
Scientific Officer:	1
Dr. R. S. Miller Code 423 Office of Naval Research 800 North Quincy Street Arlington, VA 22217 ***	
Administrative Contracting Officer:	1
AFRPO MS250 ATTN: TMD ***	
Director, Naval Research Laboratory	6
ATTN: Code 2627 Washington, DC 20375 ***	
Defense Technical Information Center	12
Building J Cameron Station Alexandria, VA 22314 ***	
ONR Branch Office:	1
Dr. P. A. Miller 736 Leavenworth Street #6 San Francisco, CA 94109 ***	
Prof. L. H. Sperling Material Research Center Coxe Laboratory #32 Lehigh Univeristy Bethlehem, PA 18015	1

```

0: dim A[7,3,3],B[7,3,3],C[7,3,3],D[3,7],L[7],M[7],N[7],R[7,3],S[7,3]
1: dim A#[30],B#[30];sfg 14
2: dim E[7,3],F[7,3],G[7,3],H[7,3],K[7,3],O[7,3],P[7,3],Q[7,3],T[7,3],C#[50]
3: ldk 1
4: cfg 2;ent "READ DATA FROM A FILE?",I;if flg13=0;sfg 2;gsb "READ"
5: if not flg2;ent "IDENTIFY MONOMER 1",A#,"IDENTIFY MONOMER 2",B#
6: fmt 1,16"*";prt "MONOMER 1 IS",A#,"","MONOMER 2 IS",B#,""
7: if flg2;gto +8
8: "INIT":ent "INPUT # OF GC SHOTS",r0;0→A+B+C
9: ent "WEIGHT OF STANDARD",r5
10: dsp "WEIGHT OF",A#;ent "",r6
11: dsp "WEIGHT OF",B#;ent "",r7
12: fxd 0;prt "# OF GC SHOTS",r0,""
13: fxd 4;prt "WT OF STANDARD",r5,"","WT OF ",A#,r6,""
14: prt "WT OF ",B#,r7,""
15: fxd 0;for I=1 to r0
16: if not flg4;if flg2;gto +7
17: dsp "AREA OF STANDARD IN GC SHOT",I
18: ent "",D[I,I];fxd 0;prt "AREA OF STANDARD","IN GC SHOT",I,D[I,I]," "
19: dsp "AREA OF",A#,"IN GC SHOT",I;fmt 2,"AREA OF",c8
20: ent "",D[2,I];wrt 16.2,A#;prt "IN GC SHOT",I,D[2,I]," "
21: dsp "AREA OF",B#,"IN GC SHOT",I
22: ent "",D[3,I];wrt 16.2,B#;prt "IN GC SHOT",I,D[3,I]," "
23: A+D[1,I]→A;B+D[2,I]→B;C+D[3,I]→C
24: next I
25: (B/A)(r5/r6)→r1
26: (C/A)(r5/r7)→r2
27: if not flg4;if flg2;gto +7
28: ent "RUNS @ DIFFERENT MONOMER CONC.",r8;prt "RUNS @ DIFFERENT"
29: prt "MONOMER CONC.",r8,""
30: ent "SAMPLES TAKEN PER RUN",r9;prt "SAMPLES/RUN",r9,""
31: ent "GC SHOTS PER SAMPLE",r10;prt "GC SHOTS PER","SAMPLE",r10,""
32: dsp "MOL. WT. OF",A#;ent "",r11;prt "MOL. WT OF ",A#,r11,""
33: dsp "MOL. WT. OF",B#;ent "",r12;prt "MOL. WT OF ",B#,r12,""
34: -9999999→r13
35: -r13+r14
36: for I=1 to r8
37: "ANAL":fxd 0
38: fmt 1,16"*";spc ;wrt 16.1;prt "ANAL. FOR RUN",I;wrt 16.1
39: if not flg5;if flg2;gto +7
40: dsp "WT OF SOLVENT+CATALYST IN RUN",I;fxd 0
41: ent "",L[I];prt "", "WT OF SOL + CAT","IN RUN",I;fxd 4;prt L[I]," "
42: fxd 0;dsp "WT OF",A#,"IN RUN",I;fmt 2,"WT OF ",c10
43: ent "",M[I];wrt 16.2,A#;prt "IN RUN",I;fxd 4;prt M[I]," "
44: fxd 0;dsp "WT OF",B#,"IN RUN",I
45: ent "",N[I];wrt 16.2,B#;prt "IN RUN",I;fxd 4;prt N[I]," "
46: for J=1 to r9
47: fxd 4
48: fmt 2,"RUN",f2.0," SAMPLE",f2.0
49: spc ;wrt 16.2,I,J;if not flg5;if flg2;gto +3
50: ent "WEIGHT OF SAMPLE TAKEN",R[I,J];prt "WT OF SAMPLE","TAKEN",R[I,J]," "
51: ent "WEIGHT OF STANDARD ADDED",S[I,J];prt "WT OF STANDARD","ADDED",S[I,J]
52: spc ;0→A+B+C;fxd 0
53: for K=1 to r10
54: if not flg5;if flg2;gto +7
55: dsp "AREA OF STANDARD IN GC SHOT",K
56: ent "",A[I,J,K];prt "AREA OF STANDARD","IN GC SHOT",K,A[I,J,K]," "
57: dsp "AREA OF",A#,"IN GC SHOT",K;fmt 2,"AREA OF ",c8
58: ent "",B[I,J,K];wrt 16.2,A#;prt "IN GC SHOT",K,B[I,J,K]," "
59: dsp "AREA OF",B#,"IN GC SHOT",K

```

Copy available to DTIC does not
 permit fully legible reproduction

```

60: ent "",O[I,J,K];wt 16.2,B#;prt "IN GC SHOT",F,O[I,J,K],"
61: A+A[I,J,K]+A;B+B[I,J,K]+B;C+C[I,J,K]+C
62: next K
63: S[I,J](L[I]+M[I]+N[I]-R[I,J])/r1AR[I,J]+r23
64: M[I]/r11+r24
65: N[I]/r12+r25
66: S[I,J](L[I]+M[I]+N[I]-R[I,J])/r2AR[I,J]+r26
67: r23/r11+r48
68: r26/r12+r49
69: r24-r48+r50
70: r25-r49+r51
71: r24/(r24+r25)+E[I,J]
72: r25/(r24+r25)+F[I,J]
73: r50/(r50+r51)+G[I,J]
74: r51/(r50+r51)+H[I,J]
75: (r50+r51)/(r24+r25)+K[I,J]
76: fxd 6;wt 16.1
77: prt "IN. MOLE% A",E[I,J],"
78: prt "IN. MOLE% B",F[I,J],"
79: prt "MOLE% A IN POLY",G[I,J],"
80: prt "MOLE% B IN POLY",H[I,J],"
81: prt "% CONVERSION",K[I,J],"
82: E[I,J]/F[I,J]+X
83: G[I,J]/H[I,J]+Y
84: K[I,J](1+X)/(1+Y)+r27
85: Yr27/X+r28
86: log(1-r28)/log(1-r27)+Z
87: Y/Z+O[I,J]
88: (Y-1)/Z+P[I,J]
89: if O[I,J]<r13;gto +2
90: O[I,J]+r13
91: if O[I,J]>r14;gto +2
92: O[I,J]+r14
93: next J
94: if flg5;gto "CHANGES"
95: next I
96: if flg4;gto "CHANGES"
97: ent "CHANGES?",I;if flg13=0;gsb "CHANGES"
98: r(r13r14)+r29
99: for I=1 to r8
100: for J=1 to r9
101: O[I,J]/(r29+O[I,J])+Q[I,J]
102: P[I,J]/(r29+O[I,J])+T[I,J]
103: r30+Q[I,J]+r30
104: r31+T[I,J]+r31
105: r32+Q[I,J]^2+r32
106: r33+T[I,J]^2+r33
107: r34+T[I,J]O[I,J]+r34
108: next J
109: next I
110: r8r9+A
111: (Ar34-r30r31)/(r32A-r30^2)+r35
112: (r31-r35r30)/A+r36
113: (r34A-r30r31)^2/(r32A-r30^2)(r33A-r31^2)+r37
114: prt "CORR COEF",r37
115: -r36r29+r4
116: r35+r36+r3
117: prt "R1=",r3,"R2=",r4
118: Ar32-r30^2+r38
119: r(r33A-r31^2-r38r35^2)/r((A-2)A)+r39
120: r39r(A/r38)+r40
121: r39r(r32/r38)+r41
122: r(r41^2+r40^2)+r42
123: r((-r29r41)^2)+r43
124: prt "DEV IN R1=", " +/-",r42
125: prt "DEV IN R2=", " +/-",r43

```



```

126: ent "STORE DATA?",I; if flg13=0;gsb "RECORD"
127: ent "PLACE PAPER IN PLOTTER, HIT CONT",I
128: cfg 1;gsb "GRID"
129: "A":for I=0 to 1 by .01
130: 1-1→r45
131: (r311+r451)÷(r311+21r45+r4r4512)→r46
132: if flg1;plt 1-r46,r45;gto +2
133: plt r46,1
134: next I;pen
135: csiz 1.2,1.5;fxd 4
136: "R1 "→C$;A$→C$[len(C$)+1];" "→C$[len(C$)+1]
137: plt .6,.22,1;lbl C$,r3," +/-",r42
138: "R2 "→C$;B$→C$[len(C$)+1];" "→C$[len(C$)+1]
139: plt .6,.16,1;lbl C$,r4," +/-",r43
140: plt .6,.1,1;lbl "CC =",r37
141: if flg1=0;sfg 1;ofs 0,-1.5;gto "A"
142: ent "INSERT PAPER FOR Eta VS Xi PLOT",I
143: r36+r56;r3→r57
144: for I=1 to r8;for J=1 to r9
145: if T[I,J]>r57;T[I,J]→r57
146: if Q[I,J]<r56;Q[I,J]→r56
147: next J;next I
148: gsb "LIMITS"
149: gsb "ETA-XI"
150: for I=1 to r8;for J=1 to r9
151: gsb "SYMB"
152: next I
153: wrt 705,"VS10";plt 0,r36,-2;plt 1,r3,-1
154: wrt 705,"VS";pen#
155: end
156: "GRID":wrt 705,"IP1100,1359,7527,9154";pen# 1
157: scl 0,1,0,2.5;cfg 0
158: csiz 1,1.5
159: wrt 705,"TL2";wrt 705,"VS"
160: xax 0,.1,0,1
161: fxd 1
162: for I=0 to 1 by .1
163: plt 1,0,1;cplt -2,-1;lbl I
164: next I
165: yax 0,.1,0,1,2
166: wrt 705,"TL0,2"
167: xax 1,.1,0,1
168: yax 1,-.1,1,0
169: wrt 705,"VS10";plt 0,0,-2;plt 1,1,-1
170: csiz 1.2,1.5;"MOLE FRACTION OF "→C$
171: if flg0;A$→C$[len(C$)+1];" IN MONOMER CHARGE"→C$[len(C$)+1];gto +2
172: B$→C$[len(C$)+1];" IN MONOMER CHARGE"→C$[len(C$)+1]
173: plt .5,-.15,1;cplt -len(C$)÷2,0;lbl C$
174: "MOLE FRACTION OF "→C$;csiz 1.2,1.5,1,90
175: if flg0;A$→C$[len(C$)+1];" UNITS"→C$[len(C$)+1];gto +2
176: B$→C$[len(C$)+1];" UNITS"→C$[len(C$)+1]
177: plt -.1,.5,1;cplt -len(C$)÷2,0;lbl C$
178: plt -.07,.5,1;cplt -9,0;lbl "IN INITIAL POLYMER"
179: if flg0=0;sfg 0;ofs 0,1.5;gto -21
180: csiz 1.5,1.2;plt .5,1.25,1;cplt -15.5,0
181: lbl "INSTANTANEOUS COMPOSITION CURVE"
182: "OF "→C$;A$→C$[len(C$)+1];"/"→C$[len(C$)+1];B$→C$[len(C$)+1]
183: " COPOLYMER"→C$[len(C$)+1]
184: plt .5,1.17,1;cplt -len(C$)÷2,0;lbl C$
185: ret
186: "READ":ent "FILE #?",I;trk 1
187: ldf I,A[*],B[*],C[*],D[*],L[*],M[*],N[*],R[*],S[*],A$,B$
188: ldf I+1
189: trk 0;ret
190: "RECORD":ent "FILE #?",I;trk 1
191: rcf I,A[*],B[*],C[*],D[*],L[*],M[*],N[*],R[*],S[*],A$,B$

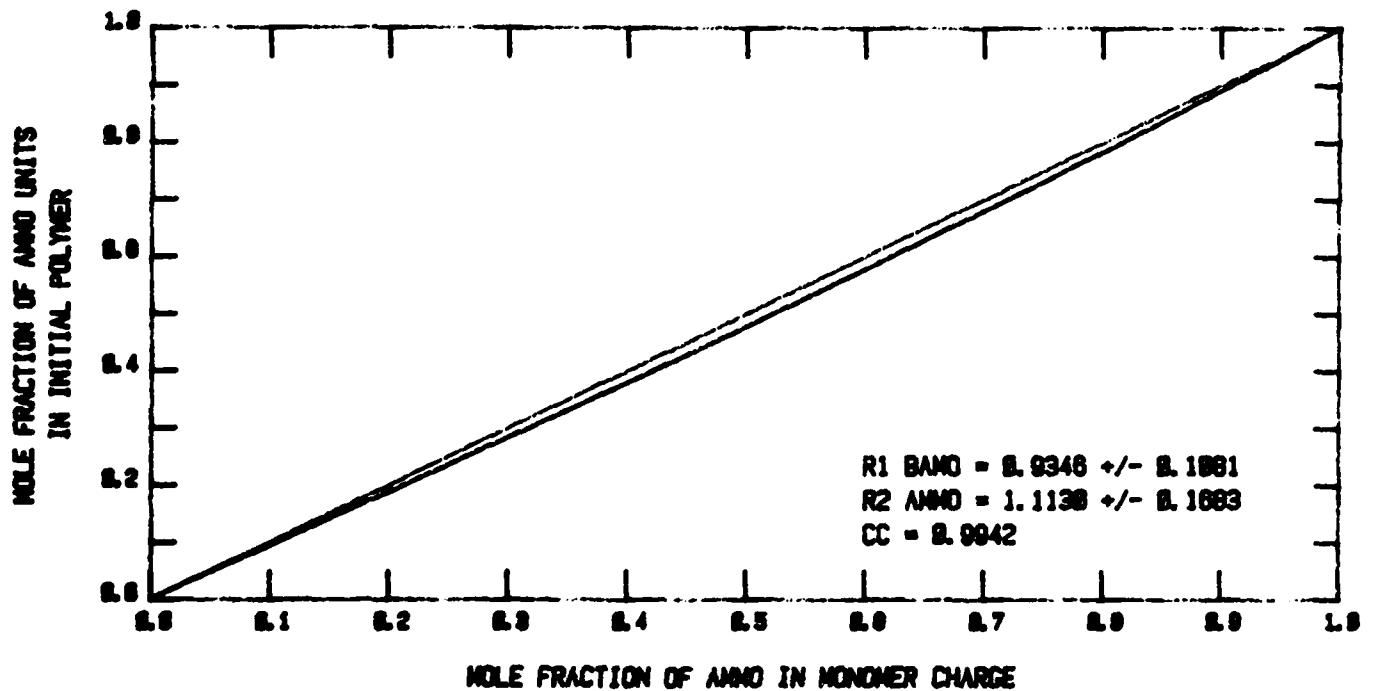
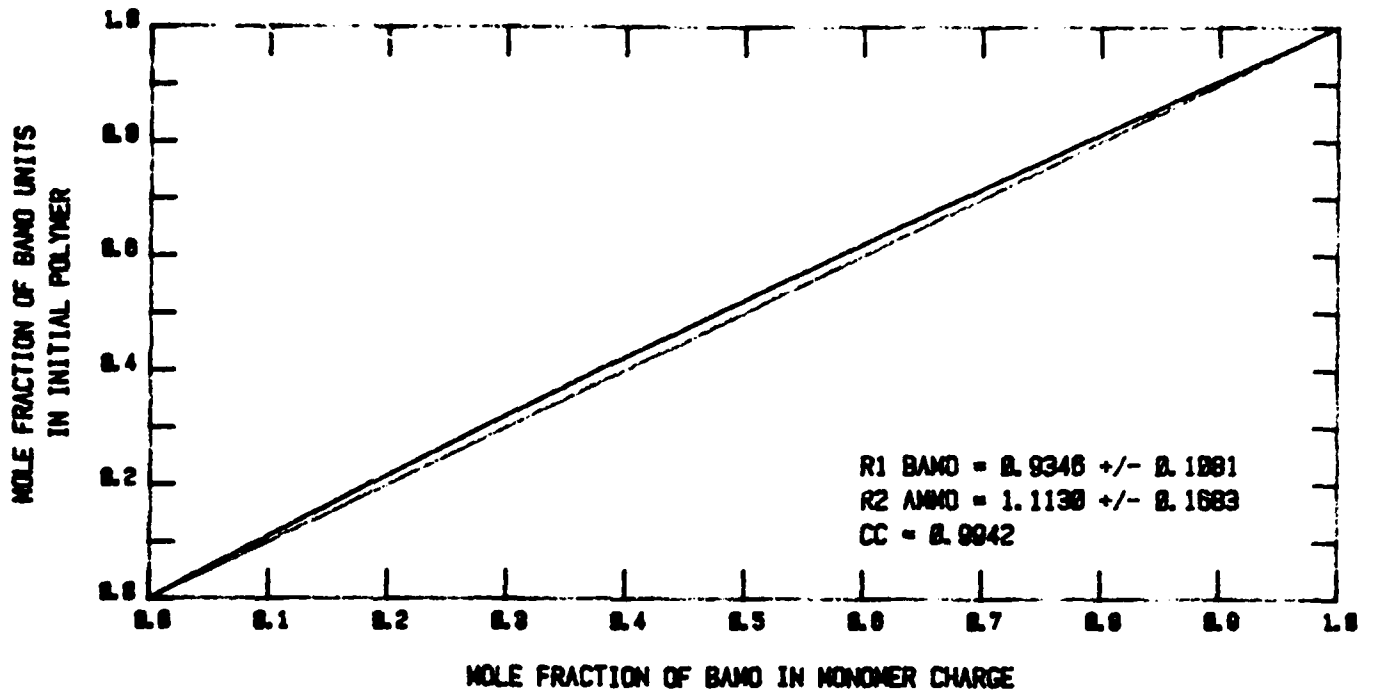
```

```

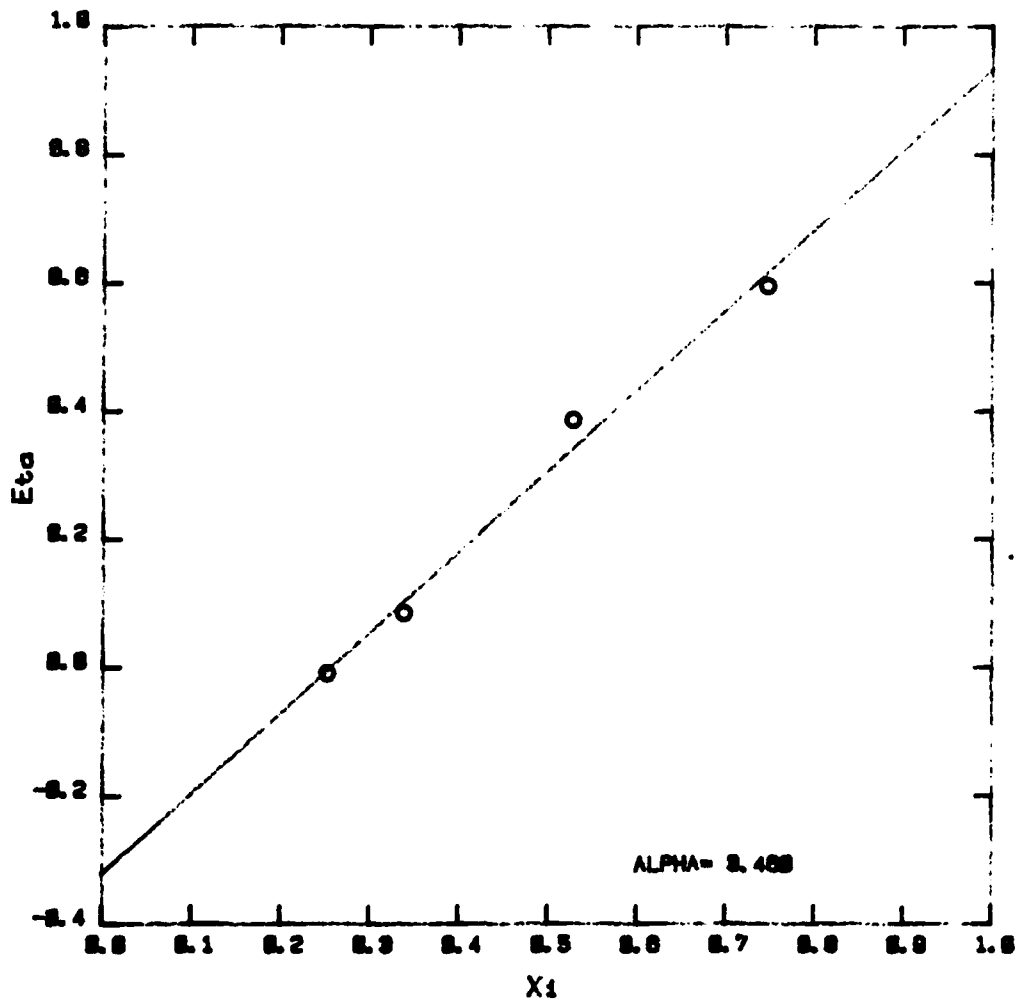
192: rcf I+1,r12
193: trk 0;ret
194: "LIMITS":cfg 3
195: if r57-r56>=10;.1r57+r57;.1r56+r56;sfg 3
196: (int(10r56)-1)/10+r52
197: if r56<0;(10r56+frn(10r56)-1)/10+r52;int(10r52)/10+r52
198: (int(10r57)+1)/10+r54
199: 0+r53;1+W
200: "INT":for I=5 to 9
201: if frn(10(r54-r52)/I)=0;(r54-r52)/I+r53
202: next I
203: if r53=0;.1W+r(53+W)+r(53+W);-1W+W;gto "INT"
204: frn(r54/r53)+r55;if r55=0;gto +3
205: if r55<.5;r54-r55r53+r54;r52-r55r53+r52;if r57>r54;r54+r53+r54
206: if r55>=.5;r54+r55r53+r54;r52+r55r53+r52;if r56<r52;r52-r53+r52
207: if flg3;10r52+r52;10r53+r53;10r54+r54
208: ret
209: "ETA-XI":wrt 705,"IP1740,3025,6550,7920"
210: scl 0,1,r52,r54;wrt 705,"TL2";wrt 705,"VS";csiz 1.5,1.5
211: xax r52,.1,0,1;fxd 1;for I=0 to 1 by .1
212: plt I,r52,1;cplt -2,-1;lbl I
213: next I
214: yax 0,r53,r52,r54,1;csiz 2,1.5
215: wrt 705,"TL0,2";xax r54,.1,0,1;yax 1,-r53,r54,r52
216: plt .5,r52,1;cplt -1,-2;lbl "Xi"
217: csiz 2,1.5,1,90;plt 0,r52+(r54-r52)/2,1;cplt -1.5,2;lbl "Eta"
218: "Eta VS Xi PLOT FOR "C$;A$+C$(len(C$)+1)
219: "/"C$(len(C$)+1);B$+C$(len(C$)+1)
220: csiz 2.5,1.5;plt .5,r54,1;cplt -len(C$)/2,2;lbl C$
221: csiz 1.5,1.5;fxd 3;plt .6,r52,1;cplt 0,2;lbl "ALPHA=",r29
222: ret
223: "SYMB":plt Q[I,J]+.0075,T[I,J],1
224: for L=0 to 360 by 20
225: plt Q[I,J]+.0075cos(L),T[I,J]+.0075(r54-r52)sin(L),2
226: next L
227: plt Q[I,J],T[I,J],1
228: ret
229: "CHANGES":
230: ent "CHANGE INITIAL PARAMETERS?",I;if flg13=0;sfg 2,4;gto "INIT"
231: cfg 4
232: ent "CHANGE PARAMETERS FOR A RUN?",I;if flg13;ret
233: sfg 5,2;ent "RUN #?",I;gto "ANAL"
234: cfg 5;ret
*31446

```

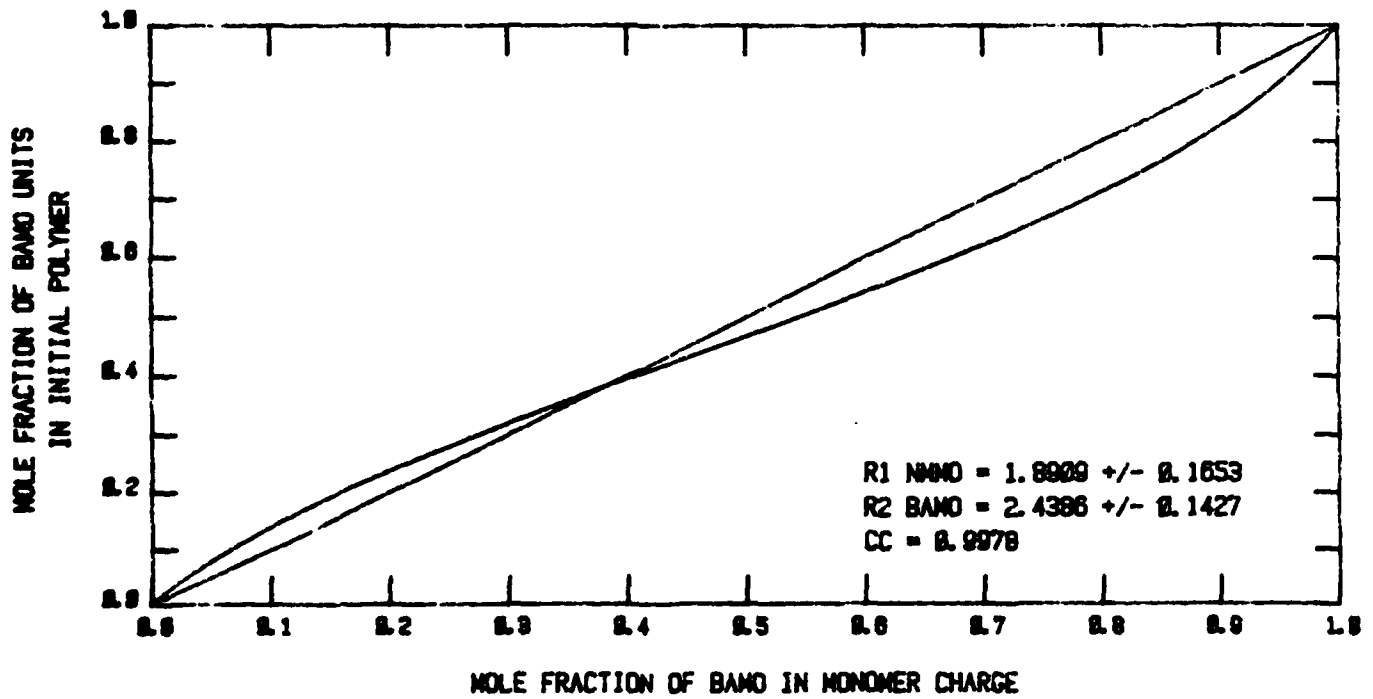
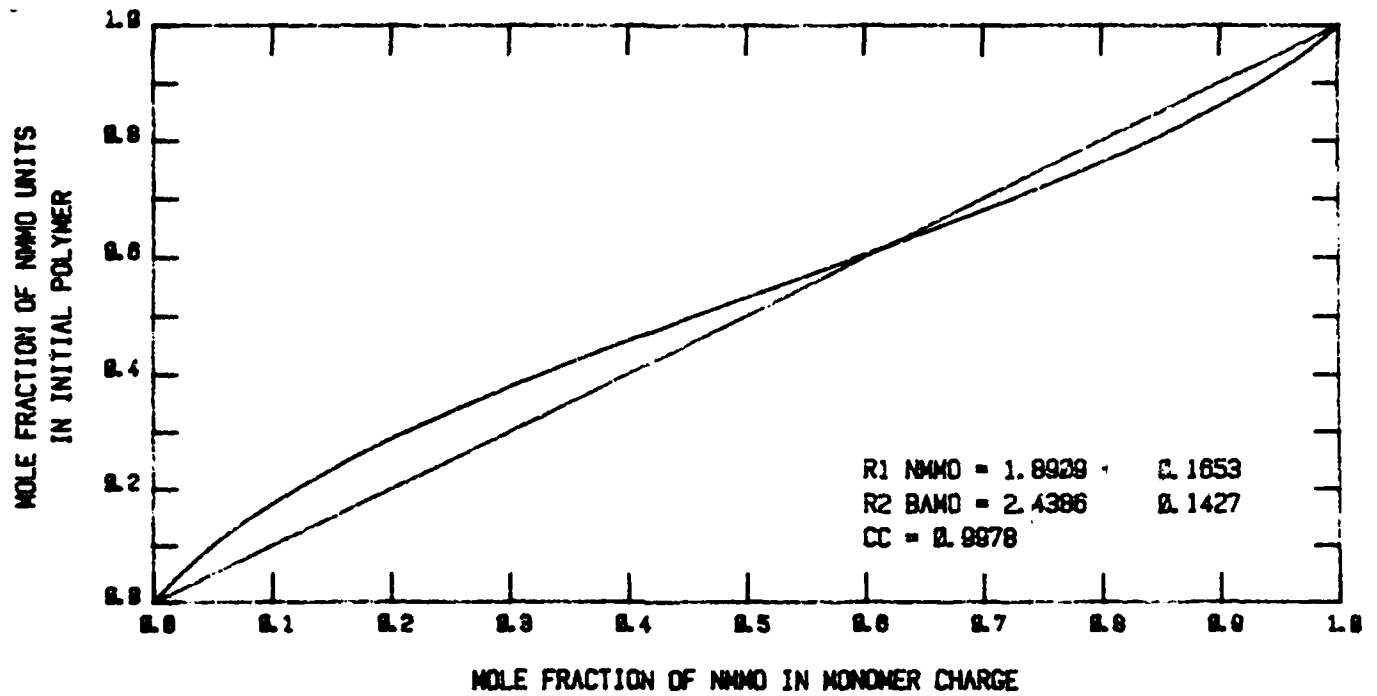
INSTANTANEOUS COMPOSITION CURVE
OF BAMO/AMMO COPOLYMER



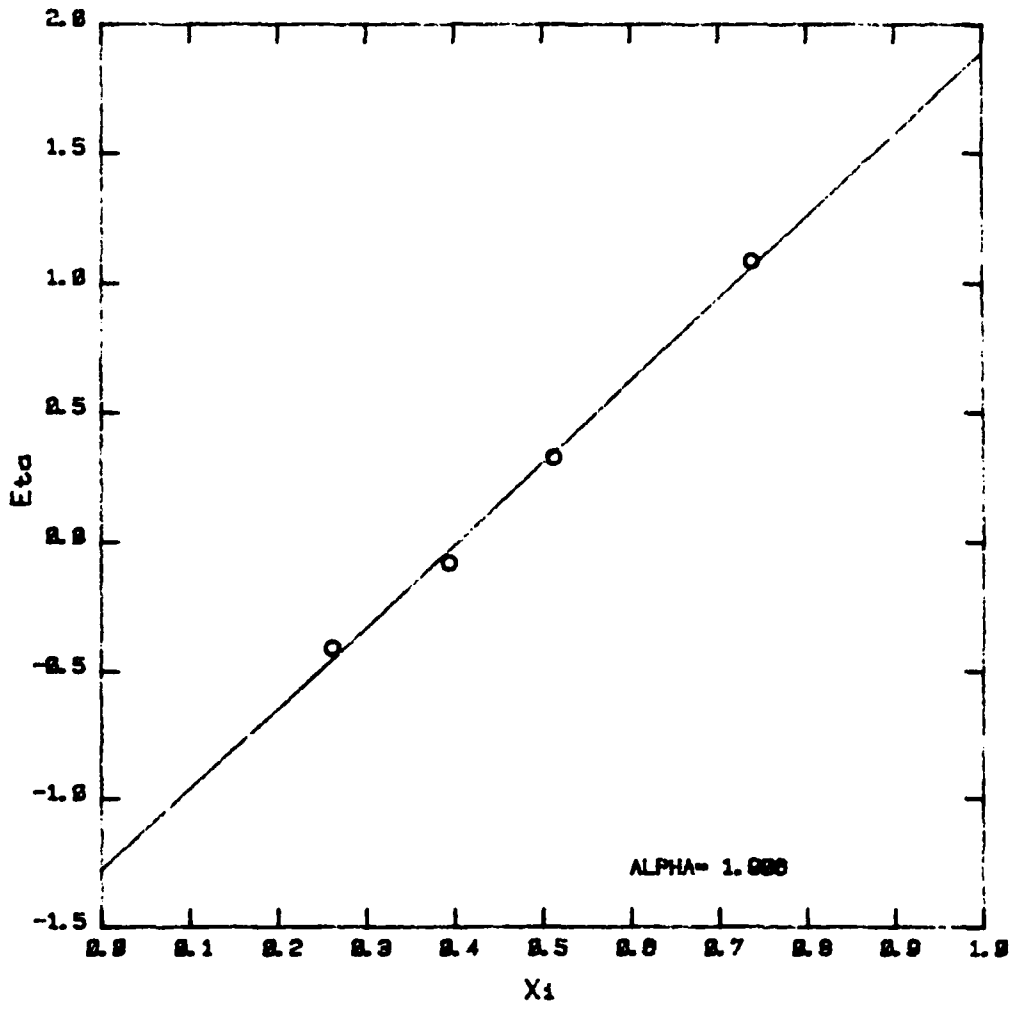
Eta VS Xi PLOT FOR BAMO/AMMO



INSTANTANEOUS COMPOSITION CURVE
OF NMMD/BAMO COPOLYMER



Eta VS Xi PLOT FOR NMMD/BAMO



REPROD

FILMED

8

24

REPROD