

MICROCOPY RESOLUTION TEST CHART
NATIONAL BUREAU OF STANDARDS-1963-A

12



AD-A142 138

DEPARTMENT OF DEFENCE
DEFENCE SCIENCE AND TECHNOLOGY ORGANISATION
MATERIALS RESEARCH LABORATORIES
MELBOURNE, VICTORIA

REPORT

MRL-R-912

CHECKLIST AND BIBLIOGRAPHY OF BENTHIC MARINE
MACROALGAE RECORDED FROM NORTHERN AUSTRALIA
I. RHODOPHYTA

John A. Lewis

DTIC
JUN 14 1984
GA

THE UNITED STATES NATIONAL
TECHNICAL INFORMATION SERVICE
IS AUTHORISED TO
REPRODUCE AND SELL THIS REPORT

Approved for Public Release



DTIC FILE COPY

84 06 14 003

Commonwealth of Australia
JANUARY, 1984

DEPARTMENT OF DEFENCE
MATERIALS RESEARCH LABORATORIES

REPORT

MRL-R-912

CHECKLIST AND BIBLIOGRAPHY OF BENTHIC MARINE
MACROALGAE RECORDED FROM NORTHERN AUSTRALIA
I. RHODOPHYTA

John A. Lewis

ABSTRACT

Published records of benthic marine red algae (Rhodophyta) from tropical and subtropical Australia are systematically listed with full bibliographic details and collection localities. More than four hundred taxa are included and, for each, references to the original description and, where possible, references to an illustration are also given.

Approved for Public Release

POSTAL ADDRESS: Director, Materials Research Laboratories
P.O. Box 50, Ascot Vale, Victoria 3032, Australia

SECURITY CLASSIFICATION OF THIS PAGE

UNCLASSIFIED

DOCUMENT CONTROL DATA SHEET

REPORT NO. MRL-R-912 AR NO. AR-003-893 REPORT SECURITY CLASSIFICATION UNCLASSIFIED

TITLE CHECKLIST AND BIBLIOGRAPHY OF BENTHIC MARINE MACROALGAE RECORDED FROM NORTHERN AUSTRALIA. I. RHODOPHYTA

AUTHOR(S) JOHN A. LEWIS CORPORATE AUTHOR Materials Research Laboratories P.O. Box 50, Ascot Vale, Victoria 3032

REPORT DATE JANUARY, 1984 TASK NO. NAV 80/165 SPONSOR NSA

CLASSIFICATION/LIMITATION REVIEW DATE CLASSIFICATION/RELEASE AUTHORITY Superintendent, MRL Organic Chemistry Division

SECONDARY DISTRIBUTION

Approved for Public Release

ANNOUNCEMENT

Announcement of this report is unlimited

KEYWORDS

Algae Rhodophyta Queensland Northern Australia

COSATI GROUPS 0603

ABSTRACT

Published records of benthic marine red algae (Rhodophyta) from tropical and subtropical Australia are systematically listed with full bibliographic details and collection localities. More than four hundred taxa are included and, for each, references to the original description and, where possible, references to an illustration are also given.



SEARCHED	<input type="checkbox"/>
SERIALIZED	<input type="checkbox"/>
INDEXED	<input type="checkbox"/>
FILED	<input type="checkbox"/>

SECURITY CLASSIFICATION OF THIS PAGE

UNCLASSIFIED

Handwritten mark resembling the letter 'A'

C O N T E N T S

	<u>Page No.</u>
1. INTRODUCTION	1
2. FORMAT	1
3. ACKNOWLEDGEMENTS	2
4. LIST OF SPECIES	3
5. REFERENCES	69
6. INDEX	91

CHECKLIST AND BIBLIOGRAPHY OF BENTHIC MARINE
MACROALGAE RECORDED FROM NORTHERN AUSTRALIA

I. RHODOPHYTA

1. INTRODUCTION

The benthic marine algal flora of tropical and subtropical Australia has been largely neglected in comparison to the temperate southern coastline (Womersley 1981a,b). With the exception of south-eastern Queensland (Cribb 1956, 1958), no taxonomic reviews of families or genera have been published and our knowledge of the overall flora depends on a large number of species lists, of varying comprehensiveness, from a diverse range of geographic locations, and published in a wide array of publication media. Prospective researchers have therefore been faced with a daunting task if they wish to determine the existing algal record; a task I faced on starting studies at the North Barnard Islands (Lewis 1979), site of a Defence-operated exposure raft, and in the Defence training area of Shoalwater Bay (Lewis et al 1981).

This report, and subsequent reports covering the Phaeophyta and Chlorophyta, aim at overcoming this problem by systematically collating the published algal records from tropical and subtropical Australia, and providing an aid to further identification of recorded taxa. Further to this it is hoped that the report will aid in the identification of genera and higher groupings in need of critical taxonomic review and provide a basis for such reviews.

2. FORMAT

The region covered by the check-list extends from the New South Wales-Queensland border on the eastern coastline (Latitude 28°10'S) around the northern coastline to North-West Cape in Western Australia (Latitude 21°48'S). Norfolk Island and Lord Howe Island are also included, the latter, though at a more southerly latitude than the NSW-Qld border, because of its essentially tropical character. All collection localities cited in the text are shown in figure 1.

For each species record, full bibliographic details and the collection locality or localities are given. Precise localities for species listed in Cribb (1983) are not given but all are from the Capricorn and Bunker groups of islands and Lady Elliot I. Where recorded names have been reduced to synonymy with other species they are recorded as such, but full synonymies have not been attempted. Dubious records, as for example those of typically southern Australia taxa, are indicated by an asterisk. To aid in future identification of species, full references to original species descriptions are given and, where one could be found, a reference to an illustration of each species.

The systematic arrangement follows Wynne and Kraft (1981).

3. ACKNOWLEDGEMENTS

I would like to thank Dr Peter Saenger and Dr Gerry Kraft for checking through my manuscript.

Thanks are also due to Mrs R. Higgins and Mrs T. Pizzinga of the Word Processing Section at MRL for the arduous task of typing the manuscript.

4. LIST OF SPECIES

Sub-class Florideophycidae

ORDER NEMALIALES

Family Nemaliaceae

Trichogloea requienii (Montagne) Kuetzing 1849:544.

Cribb 1983: 23, pl. 47 figs. 3-4, pl. 48 fig. 2.

Family Helminthocladiaceae

Helminthocladia australis Harvey 1863: pl.272

Womersley 1965:470, figs 46-53, pl.5.

May 1965:385.

as *Helminthora tumens* J. Agardh
Lucas 1935:215 (Lord Howe I.)

Liagora ceranoides Lamouroux 1816:239

Cribb 1983:18, pl. 46 fig.1, pl. 47 fig. 2.

Cribb 1965b:62 (Wilson I.). Levring 1953:504.

May 1951b:96 (Brampton I.); 1965:358. Saenger 1979:54
(Swains Reef).

as *L. leprosa* J. Agardh
Bailey 1913:822. Lucas 1931:53. Sonder 1871:60 (Cape York)

?as *L. viscida* C. Agardh
Dickie 1876:448 (Torres Strait)

Liagora cladonioides Boergesen 1942:38, figs. 18-19, pl. 2 fig. 4.

Cribb 1983:19, pl.22 fig. 3, pl. 44 fig. 2.

Liagora farinosa Lamouroux 1816:240.

Womersley 1965:478, text-figs. 59-62, pl. 6 fig. 2.

Price et al. 1976:6 (Lizard I.).

Liagora hawaiiiana Butters 1911:164, pl. 24 figs. 8-9.

Cribb 1983: 20, pl. 43 fig. 1.

Liagora howensis Lucas 1935:215 (Lord Howe I.)

May 1965:358.

Liagora pinnata Harvey 1853: 138, pl. 31b

Cribb 1983:21, pl. 45 fig. 1, pl. 47 fig. 1.

Liagora rugosa Zanardini var. *vieillardii* Grunow 1874:36

Chapman 1977:161 (Norfolk I.). Laing 1900:300 (Norfolk I.).
Lucas 1909:21. Reinhold 1900:150 (Norfolk I.).

Liagora setchellii Yamada 1938:13, pl. 3 fig. 2, text-figs. 7-8.

Abbott 1945:153, figs. 4,5

Price et al. 1976:6 (Lizard I.)

Liagora valida Harvey 1853:138, pl.31a figs. 1-5.

Cribb 1983:22, pl. 44, fig. 1.

Cribb 1965b:62 (Wilson I.). Lewis et al. 1981:21
(Shoalwater Bay).

Family Dermonemataceae

Yamadaella cenomyce (Decaisne) Abbott 1970:115, figs. 1-9.

Cribb 1983:24, pl. 48 fig. 1, pl. 62 fig. 4.

Cribb 1972:97 (Hoskyn I.); 1981:343.

as *Liagora cenomyce* Decaisne

Cribb 1965b:62 (Wilson I.); 1966:22 (Heron I.); 1969:91
(NorthWest I.). May 1965:358 (Norfolk I.).

as *L. annulata* J. Agardh

Lucas 1934:350 (Low Is.)

Liagora hawaiiiana Butters 1911:164, pl. 24 figs. 8-9.

Cribb 1983: 20, pl. 43 fig. 1.

Liagora howensis Lucas 1935:215 (Lord Howe I.)

May 1965:358.

Liagora pinnata Harvey 1853: 138, pl. 31b

Cribb 1983:21, pl. 45 fig. 1, pl. 47 fig. 1.

Liagora rugosa Zanardini var. *vieillardii* Grunow 1874:36

Chapman 1977:161 (Norfolk I.). Laing 1900:300 (Norfolk I.).
Lucas 1909:21. Reinbold 1900:150 (Norfolk I.).

Liagora setchellii Yamada 1938:13, pl. 3 fig. 2, text-figs. 7-8.

Abbott 1945:153, figs. 4,5

Price et al. 1976:6 (Lizard I.)

Liagora valida Harvey 1853:138, pl.31a figs. 1-5.

Cribb 1983:22, pl. 44, fig. 1.

Cribb 1965b:62 (Wilson I.). Lewis et al. 1981:21
(Shoalwater Bay).

Family Dermonemataceae

Yamadaella cenomyce (Decaisne) Abbott 1970:115, figs. 1-9.

Cribb 1983:24, pl. 48 fig. 1, pl. 62 fig. 4.

Cribb 1972:97 (Hoskyn I.); 1981:343.

as *Liagora cenomyce* Decaisne

Cribb 1965b:62 (Wilson I.); 1966:22 (Heron I.); 1969:91
(NorthWest I.). May 1965:358 (Norfolk I.).

as *L. annulata* J. Agardh

Lucas 1934:350 (Low Is.)

Family Bonnemaisoniaceae

**Asparagopsis armata* Harvey 1855a:544.

Lucas & Perrin 1947:244, fig. 107.

Bailey 1913:825. May 1965:376.

Asparagopsis taxiformis (Delile) Collins & Hervey 1917:117.

Cribb 1983:28, pl. 4 figs. 1-2.

Chapman 1977:161 (Norfolk I.). Cribb 1961:53 (Thursday I.).
Levring 1953:528 (Moreton Bay). Lewis et al. 1981:21 (Shoalwater
Bay). Lucas 1935:222 (Lord Howe I.). May 1965:376. Ngan &
Price 1979:9 (Townsville). Stephenson et al. 1974:119 (Moreton
Bay). Womersley 1958:153 (Arnhem Land).

as *A. sandfordiana* Harvey
Dickie 1876:448 (Torres Strait).

as *Falkenbergia hillebrandii* (Bornet) Falkenberg
Cribb 1978:68 (Hinchinbrook I.). Ngan & Price 1979:9
(Townsville). Sammarco 1983:9 (Britomart Reef).

Delisea fimbriata (Lamouroux) Montagne 1844:155.

Levring 1953:521, figs. 52-55b (Caloundra).

as *D. pulchra* (Greville) Montagne
Bailey 1913:825. Lucas 1931:55; 1935:222 (Lord Howe I.).
May 1965:374. Sonder 1871:52 (Rockingham Bay).

Family Chaetangiaceae

Actinotrichia fragilis (Forsskal) Boergesen 1932b:6, pl. 1 fig. 4.

Cribb 1983:25, pl. 8 fig. 1.

as *A. rigida* (Lamouroux) Decaisne
Bailey 1913:822. Levring 1953:515. Lucas 1931:53. May 1965:360.
Sonder 1871:61 (Cape York); 1880:25.

Galaxaura arborea Kjellman 1900:72, pl. 11 figs. 1-11, pl. 20 fig. 39.

Cribb 1983:26, pl. 5 fig. 1, pl. 49 fig. 2.

May 1965:359.

Galaxaura fasciculata Kjellman 1900:53, pl. 5 figs. 1-9, pl. 20 fig. 14.

Papenfuss et al. 1982:406, figs. 3, 31, 32, 43.

May 1951a:56 (Hayman I., Whitsunday I., Low Is.); 1965:359.
Okamura 1904:86 (Aust., loc. unknown).

as *G. cohaerens* Kjellman
Lucas 1934:350 (Low Is.)

Galaxaura filamentosa Chou 1945:39, pl. 1 figs. 1-6, pl. 6 fig. 1.

Itono 1977a:3, fig. 1; 1980:2, fig. 1.

?as *G. rudis* Kjellman
Lucas 1934:350 (Low Is.); 1935:216 (Lord Howe I.).

Galaxaura glaberrima mihi

Lucas 1934:350 (Low Is.)

Galaxaura marginata (Ellis & Solander) Lamouroux 1816:264.

Papenfuss et al. 1982:411, figs. 7-9, 24, 36, 37.

as *Brachycladia marginata* Ellis & Solander
Bailey 1913:822

as *G. veprecula* Kjellman
Cribb 1983:28, pl. 5 fig. 4, pl. 50 fig. 2.

as *Mastophora plana* (Sonder) Harvey
Saenger 1979:54 (Swain Reefs).

Galaxaura oblongata (Ellis & Solander) Lamouroux 1816:262.

Papenfuss et al. 1982:415, figs. 10-13b, 25, 38.

Cribb 1978:68 (Hinchinbrook I.). Levring 1953:513.
Morrissey 1980:105 (Magnetic I.). Ngan & Price
1979:9 (Townsville). Price et al. 1976:6 (Lizard I.).
Sonder 1871:61 (Port Denison).

as *G. cylindrica* (Ellis & Solander) Lamouroux
May 1965:359.

as *G. fastigiata* Decaisne
Chapman 1977:161 (Norfolk I.). Levring 1953:514 (Moreton Bay).
Lucas 1935:216 (Lord Howe I.). May 1965:359.

as *G. eburnea* Kjellman
Weber van Bosse 1921:215 (Moorefield R.)

as *G. fragilis* Decaisne
Bailey 1913:822. Lucas 1931:53 (Dunk I.). Sonder 1871:61
(Rockingham Bay); 1880:25 (Cooktown).

?as *G. lapidescens* (Ellis & Solander) Lamouroux
Bailey 1913:822. Levring 1953:513 (Low Is.). Lucas 1931:53.
May 1965:359. Sonder 1871:61 (Cape York); 1880:25.

Galaxaura obtusata (Ellis & Solander) Lamouroux 1816:262.

Papenfuss et al. 1982:416, figs. 14-16, 27, 39.

Bailey 1913:822. Chapman 1977:161. Laing 1900:300
(Norfolk I.). Levring 1953:514 (Moreton Bay, Caloundra).
Reinbold 1900:150 (Norfolk I.). Sonder 1871:61 (Port Denison).

as *G. robusta* Kjellman
Lewis et al. 1981:21 (Shoalwater Bay)

as *G. tumida* Kjellman
Lucas 1935:217 (Lord Howe I.)

as *G. umbellata* (Esper) Lamouroux
Bailey 1913:822. Lucas 1931:53. May 1965:359. Sonder 1880:25.

Galaxaura rugosa (Ellis & Solander) Lamouroux 1816:263.

Papenfuss et al. 1982:421, figs. 17-19, 29, 40, 41, 45.

Bailey 1913:822. Cribb 1983:26, pl. 5 fig. 2, pl. 50 fig. 1.
Levring 1953:513 (Green I.). Lucas 1931:57. May 1965:359.
Sonder 1871:61 (Cape York, Port Denison); 1880:25. Womersley
1958:153 (Arnhem Land).

as *G. elongata* J. Agardh.
Bailey 1913:822. Johnston 1917:59 (Caloundra). Levring
1953:513. Lucas 1909:22 (Norfolk I.); 1931:53 (Bowen);
1934:350 (Low Is.). May 1965:359. Sonder 1880:25.

as *G. glabriuscula* Kjellman
May 1951a:86 (Green I., Hayman I., Cape Tribulation);
1951b:96 (Brampton I.); 1965:359.

as *G. squalida* Kjellman
Lewis et al 1981:21 (Shoalwater Bay).

Galaxaura subfruticulosa Chou 1945:41, pl. 2 fig. 6, pl. 8 fig. 2.

Cribb 1983:27, pl. 5 fig. 3, pl. 49 fig. 1.

May 1951b:96 (Brampton I.); 1965:359.

Scinaia moniliformis J. Agardh 1885:72

Setchell 1914:105, pl. 12 figs. 31-32, pl. 13 fig. 38.

May 1948b:293 (Lord Howe I.)

Scinaia moretonensis Levring 1953:509, figs. 39-40 (Moreton Bay).

Ngan & Price 1979:9 (Townsville). May 1965:386. Price et al.
1976:6 (Lizard I.). Womersley 1958:153 (Arnhem Land).

Family Acrochaetiaceae

Acrochaetium effusum Levring 1953:479, fig. 13 f-g (Moreton Bay).

May 1965:364.

Acrochaetium pulvinatum Levring 1953:477, fig. 12 (Moreton Bay).

May 1965:363.

Acrochaetium subseriatum Boergesen 1932a:118, figs. 6-7.

Dawson 1954a:414, fig. 25f,g.

Sammarco 1983:8 (Britomart Reef).

Audouinella dasyae (Collins) Woelkerling 1973:545, figs. 10-31.

Cribb 1983:12, pl. 4 figs. 6-7.

Audouinella daviesii (Dillwyn) Woelkerling 1971:28, figs. 7,22.

Cribb 1983:13, pl. 2 figs. 5-7.

Audouinella eugenea (Skuja) Jao 1940:243

Cribb 1965a:273, pls. 5-6 (Noosa).

Audouinella microscopica (Naegeli) Woelkerling 1971:33, figs. 10, 23a.

Cribb 1983:14, pl. 3 figs. 4-6.

Lewis et al. 1981:21 (Shoalwater Bay).

as *Acrochaetium catenulatum* Howe
Levring 1953:472, fig. 8 (Noosa, Heron I., Moreton Bay).
May 1965:363.

Audouinella saviana (Meneghini) Woelkerling 1973:560, figs. 56-60.

Cribb 1983:15, pl. 3 figs. 1-3.

as *Acrochaetium thuretii* (Bornet) Collins & Hervey
Levring 1953:476. May 1965:364.

Audouinella secundata (Lyngbye) Dixon in Parke & Dixon 1976:590.

Cribb 1983:16, pl. 2 figs. 1-4.

Family Gelidiaceae

Gelidium australe J. Agardh 1876:550

Lucas & Perrin 1947:143, fig. 17.

Lucas 1935:218 (Lord Howe I.). May 1965:371.

Gelidium corneum (Hudson) Lamouroux 1813:128

Sreenivasa Rao 1970:71, pl. 2h, text-fig. 5 a-e.

Johnston 1917:59 (Caloundra). Ngan & Price 1979:9 (Townsville).
Sonder 1871:57 (Rockingham Bay).

Gelidium crinale (Turner) Lamouroux in Bory 1825:191.

Santelices 1977:67, fig. 2 a-c.

Ngan & Price 1979:9 (Townsville).

var. *perpusillum* Piccone & Grunow in Piccone 1884:317.

Dawson 1954a:421, fig. 31 e,f.

Cribb 1978:68 (Hinchinbrook I.). Ngan & Price
1979:9 (Townsville).

Gelidium heteroplatos Boergesen 1934:3, fig. 3.

Sreenivasa Rao 1970:76, text-fig. 8.

Ngan & Price 1979:9 (Townsville).

Gelidium latifolium (Greville) Bornet & Thuret 1876:58

Feldmann & Hamel 1936:121, fig. 25, p.13 figs. 2,3.

Bailey 1913:822

as *G. corneum* Greville

Bailey 1883:794

Gelidium maidenii Lucas 1935:217, pl. 7 fig. 3 (Lord Howe I.).

May 1965:371.

Gelidium pusillum (Stackhouse) Le Jolis 1863:139.

Santelices 1977:71, fig. 4.

Bailey 1913:822. Cribb 1978:68 (Hinchinbrook I.). May 1965:371.

Ngan & Price 1979:10

(Townsville). Womersley 1958:153 (Arnhem Land).

as *Gelidium pulchellum* (Turner) Kuetzing

Cribb 1978:68 (Hinchinbrook I.).

Pterocladia caerulescens (Kuetzing) Santelices 1976:165, figs. 1-27.

Cribb 1983:34, pl. 6 fig. 3.

Pterocladia caloglossoides (Howe) Dawson 1952:76, pl. 6 fig. 1.

Cribb 1983:34, pl. 7 figs. 2-5.

Pterocladia capillacea (Gmelin) Bornet & Thuret 1876:57.

Santelices 1977:80, figs. 6 i-k.

Chapman 1977:161 (Norfolk I.). Endean et al. 1956:111 (Gold Coast, Pt. Lookout, Caloundra, Noosa). Laing 1900:300 (Norfolk I.). Lucas 1909:23; 1935:218 (Lord Howe I.). Reinbold 1900:150 (Norfolk I.).

Pterocladia lucida (Turner) J. Agardh 1851:483.

Lucas & Perrin 1947:144, fig. 19.

Lucas 1935:218 (Lord Howe I.).

Family Gelidiellaceae

Gelidiella acerosa (Forsskal) Feldmann & Hamel 1934:533, pl.46.

Cribb 1983:29, pl. 6 fig. 1.

Borowitzka et al. 1978:370 (One Tree I.). Cribb 1965b:62 (Wilson I.); 1966:22 (Heron I.); 1969:89. (North West I.); 1972:97 (Hoskyn I.); 1975:83 (Masthead I.); 1978:68 (Hinchinbrook I.); 1981:342. May 1951b:96 (Brampton I); 1965:374. Morrissey 1980:105 (Magnetic I.). Price et al. 1976:6 (Lizard I.). Womersley 1958:153 (Arnhem Land).

as *Gelidium rigidum* (Vahl) Greville

Bailey 1913:822. Chapman 1977:161 (Norfolk I.). Laing 1900:300 (Norfolk I.). Lucas 1909:23; 1931:53. Sonder 1871:57 (Cape York, Torres St.).

Gelidiella adnata Dawson 1954a:422, fig. 33f.

Santelices 1977:63, fig. 1d.

Cribb 1965b:62 (Wilson I.); 1966:22 (Heron I.).

Gelidiella bornetii (Weber van Bosse) Feldmann & Hamel 1934:528.

Cribb 1983:30, pl. 7 fig. 1.

Borowitzka et al. 1978:370 (One Tree I.). Cribb 1965b:62 (Wilson I.); 1966:22 (Heron I.); 1969:89 (North West I.); 1972:99 (Hoskyn I.); 1975:70 (Masthead I.).

Gelidiella pannosa (Feldmann) Feldmann & Hamel 1934:354, figs. 1-2.

Cribb 1983:31, pl. 6 fig. 2.

ORDER CRYPTONEMIALES

Family Corallinaceae

Amphiroa anastomosans Weber van Bosse 1904:91, pl. 16 figs. 3-4.

Cribb 1983:44, pl. 11 fig. 1.

Amphiroa anceps (Lamarck) Decaisne 1842:125

Weber van Bosse 1904:93, pl. 6 figs. 6-8.

Bailey 1913:829. Chapman 1977:162. Laing 1900:300 (Norfolk I.).

Lucas 1909:56; 1931:57. May 1965:357. Reinbold 1900:153 (Norfolk I.). Sonder 1871:54 (Rockingham Bay). Womersley 1958:154 (Arnhem Land).

Amphiroa crassa Lamouroux 1824:627

Cribb 1983:45, pl. 10 figs. 1-2.

Borowitzka et al. 1978:370 (One Tree I.). Cribb 1966:22 (Heron I.); 1969:92 (North West I.); 1972:99 (Hoskyn I.); 1975:83 (Masthead I.). Price et al. 1976:7 (Lizard I.). Saenger 1979:54 (Swains Reef).

Amphiroa foliacea Lamouroux 1824:628, pl. 93 figs. 2,3.

Cribb 1983:45, pl. 11 figs. 2-3.

Cribb 1966:22 (Heron I.); 1969:89 (North West I.); 1972:98 (Hoskyn I.); 1975:81 (Masthead I.); 1981:342. May 1951b:97 (Brampton I.); 1965:357. Price et al. 1976:7 (Lizard I.).

Amphiroa fragilissima (Linnaeus) Lamouroux 1816:298

Cribb 1983:46, pl. 10 fig. 3.

Cribb 1961:53 (Thursday I.); 1969:89 (North West I.); 1978:68 (Hinchinbrook I.); 1981:342. Lucas 1934:350 (Low Is.). May 1965:357 Morrissey 1980:105 (Magnetic I.). Ngan & Price 1979:10 (Townsville). Price et al. 1976:7 (Lizard I.).

as *Metagoniolithon graniferum* (Harvey) Weber van Bosse
Saenger 1979:54 (Swain Reefs).

Amphiroa gracilis Harvey 1855a:547

Johansen 1969:pl.14, fig.C.

Bailey 1913:829. Lucas 1909:56.

as *Metagoniolithon gracile* (Harvey) Yendo
May 1965:357

Amphiroa howensis Lucas 1935:227 (Lord Howe I.)

May 1965:357

Cheilosporum sagittatum (Lamouroux) Areschoug in J. Agardh 1852a:545

Lucas & Perrin 1947:396, fig. 200.

Bailey 1913:829. Dickie 1876:448 (Torres Strait). Lucas 1931:57. May 1965:355. Sonder 1871:54 (Port Denison).

Cheilosporum spectabile Harvey ex Grunow 1874:41

Womersley & Bailey 1970:314, pl. 26 fig. 22.

Bailey 1913:829. Cribb 1978:68 (Hinchinbrook I.). May 1965:356. Mueller 1881:105. Ngan & Price 1979:10 (Townsville).

Cheilosporum wardii (Harvey) De Toni 1905:1828.

Harvey 1847:99, pl.38 (as *Arthrocardia wardii*)

Bailey 1913:829. May 1965:356.

as *Arthrocardia wardii* Harvey
Bailey 1883:791

Corallina granifera Ellis & Solander 1786:120 pl.21C

Kuetzing 1858:pl. 76d-g.

Bailey 1913:829.

Corallina officinalis Linnaeus 1758:805

Johansen 1970:79, figs. 1, 3, 5, 6, 9, 11.

Johnston 1917:59 (Caloundra). Okamura 1904:92 (Torres Strait, Moreton Bay).

var. *chilensis* (Decaisne) Kuetzing 1858:32

Abbott & Hollenberg 1976:405, fig. 354.

as *Corallina chilensis* Decaisne
Lucas 1909:57 (Norfolk I.); 1935:228 (Lord Howe I.).

Dermatolithon pustulatum (Lamouroux) Foslie 1900:21.

Kuetzing 1869:pl. 94a,b.

Bailey 1913:829. Chapman 1977:162. May 1965:355.

as *Melobesia pustulata* Lamouroux
Laing 1900:300 (Norfolk I.). Lucas 1909:55. Reinbold 1900:153
(Norfolk I.).

Fosliella farinosa (Lamouroux) Howe 1920:587.

Cribb 1983:48, pl. 51 figs. 1-2.

May 1951b:97 (Brampton I.); 1965:355.

as *Melobesia farinosa* Lamouroux
Bailey 1913:829. Lucas 1909:55; 1931:57. Sonder 1871:54 (Cape
York).

as *M. verrucata* Lamouroux
Dickie 1876:448 (Torres Strait).

as *M. granulata* Kuetzing
Lucas 1909:55. Sonder 1880:20 (Port Denison).

var. *chalicodictya* Taylor 1939:10, figs. 13-14, pl. 1.

Cribb 1983:48, pl. 22 fig. 4.

Haliptilon cuvieri (Lamouroux) Johansen & Silva 1978:417, fig. 3.

as *Corallina cuvieri* Lamouroux
Bailey 1913:829. Chapman 1977:162. Laing 1900:301. Lucas
1931:57. Reinbold 1900:152 (Norfolk I.). Sonder 1871:53 (Port
Denison).

Haliptilon gracile (Lamouroux) Johansen 1971:243

Abbott & Hollenberg 1976:416, fig. 369.

as *Corallina gracilis* Lamouroux
Okamura 1904:92 (? N.W. Cape).

Haliptilon rosea (Lamarck) Garbary & Johansen 1982:218,
figs. 12, 13.

as *Corallina rosea* Lamarck
Lucas 1935:228 (Lord Howe I.)

Jania adhaerens Lamouroux 1816:270

Cribb 1983:47, pl. 10 figs. 4-5.

Cribb 1961:53 (Thursday I.); 1965b:62 (Wilson I.); 1966:22 (Heron
I.); 1978:68 (Hinchinbrook I.); 1981:343. Morrissey 1980:105

(Magnetic I.). Ngan & Price 1979:10 (Townsville). Price et al. 1976:7 (Lizard I.)

as *Corallina adhaerens* (Lamouroux) mut. strict.
Okamura 1904:92 (Torres Strait).

as *Corallina decussato-dichotoma* Yendo
Okamura 1904:92 (Torres Strait, N.W. Cape).

Jania crassa Lamouroux 1821:23

Abbott & Hollenberg 1977:418, fig.371

as *J. natalensis* Harvey
Bailey 1913:830

Jania fastigiata Harvey 1847:107

Lucas & Perrin 1947:397, fig. 201

Bailey 1913:830. Lucas 1909:56. Sonder 1880:21
(Cooktown).

Jania micrarthrodia Lamouroux 1816:271, pl. 9, fig. 5a, b.

Dawson 1956:49, fig. 42.

Chapman 1977:161. Bailey 1913:830. Lucas 1909:56; 1931:57.
Reinbold 1900:153 (Norfolk I.).

as var. *tenuissima* Sonder
Bailey 1913:830. Lucas 1909:56. Sonder 1880:21

as *J. tenuissima* Sonder 1880:21
Sonder 1871:54 (Cape York).

as *Corallina micrarthrodia* Lamouroux
Laing 1900:300 (Norfolk I.).

Jania rosea (Lamouroux) Decaisne 1842:123.

Harvey 1847:105, pl. 40.

as *Cornicularia rosea* (Lamouroux) Chapman
Chapman 1977:161 (Norfolk I.).

Jania rubens (Linnaeus) Lamouroux 1816:272.

Harvey 1851:pl.252.

Johnston 1917:59 (Caloundra). Lucas 1909:56; 1927:555 (Michaelmas Cay); 1931:57; 1935:228 (Lord Howe I.). May 1951b:97 (Brampton I.). Sonder 1871:54 (Port Denison, Cape York); 1880:21 (Cooktown). Womersley 1958:154 (Arnhem Land).

as *Corallina rubens* Linnaeus
Bailey 1913:829.

Lithophyllum kotschyianum Unger 1858:22, pl. 5 figs. 15-16.

Cribb 1983:49, pl. 53 figs. 1-2.

Lithophyllum moluccense Foslie 1897:12.

Cribb 1983:50, pl. 54 fig. 1.

Cribb 1965b:62 (Wilson I.); 1966:22 (Heron I.); 1969:91 (North West I.); 1975:82 (Masthead I.); 1981:344. Howe 1918:295 (Murray I.). Price et al. 1976:7 (Lizard I.).

Lithophyllum pallescens (Foslie) Foslie 1900:20

Adey et al. 1982:40, fig. 23,26,27.

as *L. okamurai* Foslie
Price et al. 1976:7 (Lizard I.).

Lithoporella melobesioides (Foslie) Foslie 1909:59.

Turner & Woelkerling 1982:201, figs. 1-4, 9, 10, 12, 13, 16-25, 28-30, 36.

Borowitzka 1981:100 (One Tree I.). Lewis 1979:6 (Nth. Barnard Is.)

**Lithothamnion glaciale* Kjellman 1883:93 pls.2,3

Adey & Adey 1973:355, figs. 7-29.

Bailey 1913:829.

Lithothamnion simulans Foslie 1904:16, fig. 7, pl. 1 figs. 24,25.

Cribb 1966:22 (Heron I.); 1981:342.

Mastophora affinis Foslie 1904:71, figs. 28-29.

Cribb 1961:53 (Thursday I.). May 1965:355.

Mastophora rosea (C. Agardh) Setchell 1943:129

Turner & Woelkerling 1982:201 figs. 5-8, 11, 14, 15, 26,
27, 31-35.

Woelkerling 1980:239

as *M. plana* (Sonder) Harvey

Bailey 1913:829. Lucas 1931:47. May 1951b:97 (Brampton I.).

as *M. foliacea* Kuetzing

Sonder 1871:54 (Cape York)

?as *M. lamourouxii* Decaisne

Dickie 1876:448 (Torres Strait); 1877:489 (Booby I.).

as *Metamastophora plana* (Sonder) Setchell

May 1965:357.

Melobesia coronata Rosanoff 1866:64, pl. 4 fig. 9.

Womersley 1958:154 (Arnhem Land).

Melobesia membranacea (Esper) Lamouroux 1816:315

Rosanoff 1866:66, pl. 2 figs. 13-16, pl. 3 fig. 1.

Lucas 1909:55. Sonder 1871:54 (Port Denison, Cape York); 1880:20

as *Lithothamnion membranaceum* (Esper) Foslie

Bailey 1913:829. Lucas 1931:57.

Mesophyllum lichenoides (Ellis) Lemoine 1928:251

as *Melobesia lichenoides* (Ellis) Areschoug

Lucas 1909:55. Sonder 1880:20 (Norfolk I.).

Mesophyllum mesomorphum (Foslie) Adey 1970:25.

Cribb 1983:50, pl. 46 fig. 2.

**Metagoniolithon chara* (Lamarck) Ducker 1979:88, figs. 9-14, 15a.

as *M. graniferum* (Harvey) Weber van Bosse

Lucas 1931:57 (Dunk I.). May 1951b:97 (Brampton I.); 1965:356

as *Amphiroa granifera* Harvey
Bailey 1913:829

Neogoniolithon fosliei (Heydrich) Setchell & Mason 1943:90

Adey et al. 1982:23, figs. 10, 11c, 13.

Cribb 1983:51. Price et al. 1976:7 (Lizard I.)

as *Goniolithon fosliei* (Heydrich) Foslie
Howe 1918:294 (Murray I.). May 1951b:97 (Brampton I.).

Neogoniolithon frutescens (Foslie) Setchell & Mason 1943:91

Foslie 1904:53, pl. 10 figs. 7-13 (as *Goniolithon frutescens*)

as *Goniolithon frutescens* Foslie
Howe 1918:295 (Murray I.)

Neogoniolithon laccadavicum (Foslie) Setchell & Mason 1943:90

Foslie 1904:51, pl. 10 figs. 10-13 (as *Goniolithon laccadavicum*).

Price et al. 1976:7 (Lizard I.)

as *Goniolithon laccadavicum* Foslie
Lucas 1934:350 (Low Is.).

Neogoniolithon myriocarpum (Foslie) Setchell & Mason 1943:90

Foslie 1904:45, pl. 9 figs. 6-7 (as *Goniolithon myriocarpon*)

Price et al. 1976:7 (Lizard I.).

as *Goniolithon myriocarpum* (Foslie) Foslie
Howe 1918:295 (Murray I.)

Neogoniolithon orthoblastum (Heydrich) Setchell & Mason 1943:90

as *Goniolithon orthoblastum* (Heydrich) Howe 1918:
291, pl. 97 fig.2, pl. 98 figs. 1,2 (Murray I.)

Neogoniolithon pacificum (Foslie) Setchell & Mason 1943:90.

Masaki 1968:48, pls. 36-37, 76-77.

Cribb 1983:51.

Porolithon gardineri (Foslie) Foslie 1909:57.

Cribb 1983:52, pl. 54 fig. 2.

Porolithon onkodes (Heydrich) Foslie 1909:57

Adey et al. 1982:7, figs. 2-4.

Borowitzka 1981:100 (One Tree I.). Borowitzka et al. 1978:370
(One Tree I.). Cribb 1983:53.

as *Lithophyllum oncodes* (Heydrich) Heydrich
Howe 1918:295 (Murray I.).

Family Halymeniaceae

Carpopeltis capitellata (Sonder) Schmitz in Schmitz & Hauptfleisch
1897:514.

Bailey 1913:828. Lucas 1909:54; 1931:57; May 1965:398.

as *Cryptonemia capitellata* Sonder 1871:62 (Cape York).
Bailey 1883:797. Sonder 1880:14.

Carpopeltis phyllophora (Hooker & Harvey) Schmitz in
Schmitz & Hauptfleisch 1897:514

Chiang 1970:66, fig. 32, pl. 9b.

Lucas 1935:227 (Lord Howe I.)

Cryptonemia baileyi E.M. Holmes 1885 (ref. untraced,? nomen nudum)

Bailey 1913:829.

Cryptonemia caliculata Cribb 1983:54, pl. 19 fig. 2.
(Heron I.).

**Cryptonemia undulata* Sonder 1855:516

Scott et al. 1982:249, figs. 27-35.

Bailey 1913:829. Lucas 1909:54; 1931:57. May 1965:402.
Sonder 1871:63 (Cape York); 1880:14

as *C. luxurians* (Mertens) J. Agardh
Bailey 1913:829.

Grateloupia divaricata Okamura 1915:55, pls. 116, 117 figs. 12-18

Ngan & Price 1979:11 (Townsville).

Grateloupia subsimplex Levring 1941:636, fig. 12a-c, pl. 51 fig. 3

Cribb 1978:68 (Hinchinbrook I.)

Halymenia durvillaei Bory 1828:100, pl. 15.

Cribb 1983:54, pl. 12 fig. 1.

Cribb 1961:53 (Thursday I.); Price et al. 1976:7 (Lizard I.)

Halymenia fimbriata Zanardini 1874:503 (Lord Howe I.)

Lucas 1935:227 (Lord Howe I.)

Halymenia floresia (Clemente) J. Agardh 1892:57

Trono 1969:58, pl. 7 figs. 2-4.

Bailey 1913:828. Dickie 1876:448 (Torres Strait). Lucas
1931:56 (Dunk I.)

Halymenia lacerata Sonder 1871:63 (Cape York)

Heydrich 1892:481, pl. 26 fig 20.

Bailey 1913:828. Lucas 1909:54; 1931:56. Okamura 1904:91
(Torres Strait)

Halymenia? multifida Zanardini 1874:504 (Lord Howe I.)

Lucas 1935:227 (Lord Howe I.)

?*Halymenia ulvoidea* Zanardini 1865:17, pl. 45

Cribb 1961:53, pl. 1 (Thursday I.)

Prionitis obtusa Sonder 1871:63, pl. 2 figs. 7-9 (Cape York)

Bailey 1913:828. Lucas 1909:54; 1931:57. May 1965:406.

Sonder 1880:14

Thamnoclonium seminerve J. Agardh 1885:18.

May 1965:390

Thamnoclonium tissotii Weber van Bosse 1910b:588, pl. 16 figs.2,3,
pl.17 figs. 1-2.

Bailey 1913:829. Cotton 1913:254 (Dunk I.). Lucas 1931:57.
Weber van Bosse 1921:251 (Thursday I.).

Family Peyssonneliaceae

Coriophyllum setchellii Weber van Bosse 1921:300, fig. 109

Denizot 1968:238, figs. 203-204.

Cribb 1983:43.

?*Cruoriella armorica* Crouan 1859:6, fig. 9.

Cribb 1983:42, pl. 9 figs. 7-8.

?*Peyssonelia atropurpurea* Crouan 1867:148, pl. 19.

Cribb 1983:37, pl. 9, figs. 2, 4-6.

Peyssonelia calcea Heydrich 1897:10

Denizot 1968:132, fig. 113 (2-4).

Cribb 1983:38.

Peyssonelia capensis Montagne 1847:177

Denizot 1968:123, fig. 105.

Cribb 1983:39. Price et al. 1976:7 (Lizard I.)

as *P. gunniana* J. Agardh

May 1951b:96 (Brampton I.); 1965:355. ? Sammarco 1983:11
(Britomart Reef).

Peyssonelia coccinea J. Agardh 1876:385.

Denizot 1968:135, fig.121.

Okamura 1904:92 (Moreton Bay).

Peyssonelia conchicola Piccone & Grunow in Piccone 1884:317,
pl. 7 figs. 5-8.

Cribb 1983:40, pl. 9 fig. 3.

Peyssonelia evae Weber van Bosse 1921:279, fig. 95.

Cribb 1983:40, pl. 9 fig. 1.

Peyssonelia hariotii Weber van Bosse 1921:275 fig. 93

Denizot 1968:104, fig. 89

Cribb 1966:22 (Heron I.)

Peyssonelia inamoena Pilger 1911:311, figs. 24-25

Denizot 1968:97, figs. 78-84.

Cribb 1983:41.

Peyssonellia mariti (Weber van Bosse) Denizot 1968:122, figs. 45-46.

Cribb 1983:42.

Peyssonelia rubra (Greville) J. Agardh 1851:502

Weber van Bosse 1921:270, fig. 89.

Chapman 1977:161. Laing 1900:300 (Norfolk I.). Lucas 1909:55.
Reinbold 1900:152 (Norfolk I.). Sonder 1871:60 (Port Denison).

**Sonderopelta coriacea* Womersley & Sinkora 1981:85, fig.1

Denizot 1968:260, figs. 224-227 (as *Sonderophycas australis*)

as *Ethelia australis* (Sonder) Weber van Bosse
May 1965:357.

as *Peyssonellia australis* Sonder
Bailey 1913:829.

Family Dumontiaceae

Acrosymphyton taylorii Abbott 1962:845

Millar & Kraft 1984:figs. 2-10 (One Tree I., Ribbon Reef, Lord Howe I.).

Family Hildenbrandiaceae

Hildenbrandia prototypus Nardo 1834:676.

Dawson 1954a:424, figs. 36a, b.

Cribb 1965a:260 (Noosa); 1978:68 (Hinchinbrook I.). Ngan & Price 1979:10 (Townsville).

Family Corynomorphaceae

Corynomorpha prismaticus (J. Agardh) J. Agardh 1872:3

Balakrishnan 1962:77, figs. 1-29.

as *Acrotylus prismaticus* J. Agardh
Dickie 1876:448 (Torres Strait)

ORDER GIGARTINALES

Family Gigartinaceae

**Gigartina brachiata* Harvey 1860b:325

Bailey 1913:822

Family Gracilariaceae

Ceratodictyon spongiosum Zanardini 1878:36.

Cribb 1983:55, pl. 12 figs. 3-4.

Bailey 1913:823. Cotton 1913:253 (Dunk I.). Cribb 1969:89 (North West I.); 1972:98 (Hoskyn I.); 1975:81 (Masthead I.); 1978:68 (Hinchinbrook I.) 1981:342. Lucas 1931:54. Lewis et al. 1981:22 (Shoalwater Bay); May 1951b:99 (Brampton I.); 1965:385. Morrissey 1980:104 (Magnetic I.). Ngan & Price 1979:11 (Townsville). Price et al. 1976:7 (Lizard I.).

Corallopsis cereus J. Agardh (?nomen nudum)

Bailey 1913:824. Mueller 1881:105

Corallopsis urvillei J. Agardh 1852a:583

Weber van Bosse 1928:440, fig. 178.

Bailey 1913:824. Cotton 1913:253 (Dunk I.). Dickie 1876:448 (Torres Strait). May 1951b:98 (Brampton I.). Lucas 1909:30; 1931:54. May 1965:391. Sonder 1871:56, pl. 3 figs. 6-11 (Gulf of Carpentaria, Cape York); 1880:22.

Gelidiopsis acrocarpa (Harvey) Schmitz 1895:148.

Boergesen 1954:18, figs. 5,6.

Bailey 1913:823. Lucas 1909:29; 1931:54. May 1965:391.

as *Gelidium acrocarpum* Harvey

Bailey 1883:794. Sonder 1871:58 (Port Denison, Cape York, Gulf of Carpentaria).

Gelidiopsis intricata (C. Agardh) Vickers 1905:61

Cribb 1983:56, pl. 13 figs. 1-2.

Cribb 1966:22 (Heron I.). May 1949:200 (Low Is., Green I., Dunk I., Heron I., Mooloolaba, Yorkeys Knob); 1965:391. Sammarco 1983:10 (Britomart Reef).

Gelidiopsis scoparia (Montagne & Millardet) Schmitz 1895:149.

Boergesen 1954:22, fig. 7.

Lewis 1979:6 (Nth Barnard Is.). Morrissey 1980:105 (Magnetic I.). Ngan & Price 1979:11 (Townsville).

Gelidiopsis variabilis (Greville ex J. Agardh) Schmitz 1895:148.

Feldman 1931:156, fig. 2b.

Cribb 1978:68 (Hinchinbrook I.). Morrissey 1980:108 (Magnetic I.). Ngan & Price 1979:11 (Townsville).

Gracilaria arcuata Zanardini 1858:265, pl. 5 fig. 2.

Cribb 1983:57, pl. 14 figs. 3-4.

Gracilaria cacalia (J. Agardh) Dawson 1954b:2

Boergesen 1934:8, fig.6 (as *Corallopsis cacalia*).

as *Corallopsis cacalia* J. Agardh
May 1965:392.

Gracilaria canaliculata (Kuetzing) Sonder 1871:56 (Cape York).

May 1948a:45, text-fig. 7, pl. 10 fig. 2.

Bailey 1913:824. Lucas 1909:30; 1931:54. May 1965:392. Sonder
1880:22.

Gracilaria coronopifolia J. Agardh 1852a:692

Yamamoto 1978:133, pls 22,49 figs. 2,3.

as *G. lichenoides* var. *corniculata* Sonder 1871:55.
(Port Denison); 1880:22.

as *G. lichenoides* f. *coronopifolia* (J. Agardh) May
1948a:37, pl.6 figs.1-3 (Thursday I., Lindeman I.,
Moreton Bay).

Gracilaria crassa Harvey ex J. Agardh 1876:417

Dawson 1954a:438, fig. 48b.

Cribb 1978:68 (Hinchinbrook I.). Morrissey 1980:105
(Magnetic I.). Ngan & Price 1979:11 (Townsville).

Gracilaria cylindrica Boergesen 1920:375, figs. 364-365.

Cribb 1983:58, pl. 14 fig. 1.

Gracilaria edulis (Gmelin) Silva 1952:293

Yamamoto 1978:132, pl. 30 figs. 4-6, pl. 31, pl. 49 fig. 1.

Cribb 1961:53 (Thursday I.); 1978:68 (Hinchinbrook I.).
Lewis et al. 1981:22 (Shoalwater Bay). May 1956:392. Morrissey
1980:104 (Magnetic I.). Ngan & Price 1979:11 (Townsville).

as *G. compressa* (C. Agardh) Greville
Bailey 1913:823. Mueller 1881:105

as *G. lemania* (Kuetzing) Sonder
Sonder 1871:55 (Cape York); 1880:22

as *G. lichenoides* (Linnaeus) Harvey
Bailey 1913:823. Lucas 1909:30; 1931:54; 1934:350 (Low Is.). May
1948a:27, pl. 2 fig. 2, pls. 3-7, text-figs. 3,4; 1951b:98
(Brampton I.). Okamura 1904:88 (Torres Strait). Saenger et al.
1977:318. Sonder 1871:55 (Port Denison, Cape York); 1880:22.

as *G. lucasii* Gepp
Bailey 1913:824.

as *G. taenioides* J. Agardh
Bailey 1913:823. Lucas 1909:30; 1931:54

as *G. polyclada* Sonder
Bailey 1913:824. Lucas 1909:30; 1931:54. Sonder 1871:56 (Port
Denison); 1880:22.

as *G. corniculata* (R. Brown) J. Agardh
Levring 1946:222 (Brisbane)

?*Gracilaria furcellata* Montagne

Dickie 1876:448 (Torres Strait).

Gracilaria howensis Lucas 1935:220 (Lord Howe I.)

May 1948a:39, text-fig. 5, pl. 8 fig. 1; 1965:392.

Gracilaria preissiana (Sonder) Womersley in Minthein & Womersley
1976:109.

May 1948a:44, pl. 10 fig. 1 (as *G. pannosa*).

as *Rhodophyllis preissiana* (Sonder) Kuetzing
Sonder 1871:62 (Cape York)

as *R. blepharicarpa* Harvey
Lucas 1931:53. May 1965:409.

Gracilaria purpurascens (Harvey) J. Agardh 1885:63

Yamamoto 1978:127, pls 23, 24 figs. 1-3, 45 fig. 6.

Cribb 1978:68 (Hinchinbrook I.). Morrissey 1980:105
(Magnetic I.). Ngan & Price 1979:11 (Townsville).

Gracilaria rhodotricha (Dawson) Papenfuss 1967:100

Dawson 1949:47, pl. 19 figs. 3-7 (as *Gracilariopsis rhodotricha*)

Ngan & Price 1979:11 (Townsville).

as *Gracilariopsis rhodotricha* Dawson
Sammarco 1983:8 (Britomart Reef).

Gracilaria salicornia (C. Agardh) Dawson 1954b:4, fig. 3.

Yamamoto 1978:135, pls. 36, 49 fig. 4.

Cribb 1961:53 (Thursday I.)

as *Coralloopsis salicornia* (C. Agardh) Greville
May 1965:392.

as *C. salicornia* var. *minor* Sonder
Sonder 1871:56 (Cape York).

as *C. minor* (Sonder) J. Agardh
Bailey 1913:824. Lucas 1909:30; 1931:54. May 1951b:98 (Brampton
I.); 1965:392. Sonder 1880:22.

Gracilaria secundata Harvey 1863:synop. no.432.

May 1948:46, text-fig. 8, pl.10 figs. 1-3 (Lord Howe I.);
1965:393.

Gracilaria textorii (Suringar) De Toni 1895:27

Yamamoto 1978:123, pls. 12-14, 42 figs. 5-7, 43 figs. 1-4.

Bailey 1913:824. Cribb 1983:58, pl. 13 fig. 3. May 1948a:41,
text-fig. 6, pl. 9 fig. 1; 1965:392. Ngan & Price 1979:12
(Townsville). Stephenson et al. 1974:120 (Moreton Bay).

Gracilaria verrucosa (Hudson) Papenfuss 1950:195

Yamamoto 1978:128, pls. 24 figs. 4-7, 25-27, 46, 47 fig. 1.

Atherton & Dyne 1977:87 (Moreton Bay). Cribb 1978:68
(Hinchinbrook I.); 1979:69 (Moreton Bay). Ngan & Price 1979:12
(Townsville). Stephenson et al. 1974:120 (Moreton Bay).

as *G. confervoides* (Linnaeus) Greville
Bailey 1913:823. May 1948a:18, figs. 1, 2, pls. 1 figs. 1, 2, 2
fig. 1, (Keppel Bay, Noosa, Stradbroke I., Moreton Bay);
1965:392. Saenger et al. 1977:318 (Nth. Stradbroke I.). Sonder
1880:22 (Keppel Bay, Broad Sound, Cooktown).

Family Phylloporaceae

Gymnogongrus assimilis Sonder ex Mueller 1881:105 (nom.nud.).
(Cooktown).

Bailey 1913:822. May 1965:394.

Gymnogongrus griffithsiae (Turner) Martius 1828:27

Pham-hoang Ho 1969:206, fig. 2.138

Ngan & Price 1979:13 (Townsville).

Gymnogongrus irregularis Zanardini 1874:500.

Lucas 1935:218 (Lord Howe I.). May 1965:394.

Gymnogongrus pygmaeus J. Agardh 1851:317

Pham-hoang Ho 1969:205, fig. 2.137

Cribb 1978:68 (Hinchinbrook I.). Ngan & Price
1979:13 (Townsville).

Family Solieriaceae

Callophycus densus (Sonder) Kraft 1984b:figs. 17-32,
56 (Cooktown, Heron I., North West I.)

as *Thysanocladia densa* Sonder 1871:55, pl. 2 figs. 1-6
(Cape York).

Bailey 1913:823. Lucas 1931:54. Pallaghy et al. 1983:204 (Heron
I.).

Callophycus tridentifer Kraft 1984b:figs. 33-47, 52.

as *Thysanocladia laxa* Sonder

Bailey 1913:823. Dickie 1876:448 (Torres Strait). Lucas 1931:54.
May 1965:388. Sonder 1871:55 (Gulf of Carpentaria): 1880:17.

Eucheuma cervicorne Weber van Bosse 1928:420, pl. 16 figs. 1,2.

Cribb 1961:53 (Thursday I.). May 1965:388.

?*Eucheuma crassum* Zanardini 1878:36

Cribb 1983:63, pl. 19 fig. 3.

Eucheuma denticulatum (Burman f.) Collins & Hervey 1917:106

Cribb 1983:64, pl. 18 figs. 1-2.

as *E. muricatum* (Gmelin) Weber van Bosse
Cribb 1965b:62 (Wilson I.). May 1951b:98 (Brampton I.); 1965:388.

as *E. spinosum* J. Agardh
Bailey 1913:823. Dickie 1876:448 (Torres Strait). Lucas 1931:53
(Thursday I.); 1935:219 (Lord Howe I.). Okamura
1904:87 (Torres Strait). Sonder 1871:60 (Gulf of
Carpentaria, Cape York); 1880:28.

Eucheuma gelatinae (Esper) J. Agardh 1852a:628

Weber van Bosse 1928:412, fig. 163

Lucas 1931:53. May 1965:388.

Eucheuma serra J. Agardh 1852a:626

Weber van Bosse 1928:411, pl. 13 figs. 4,5.

Cribb 1978:68 (Hinchinbrook I.)

Eucheuma sonderi Harvey (?nomen nudum)

Dickie 1876:448 (Torres Strait); Lucas 1931:53 (Dunk I.)

Sarconema filiforme (Sonder) Kylin 1932:22

Papenfuss & Edelstein 1974:31, figs. 1-3, 13, 20-25.

May 1949:200 (Lord Howe I.); 1951b:98 (Brampton I.); 1965:387.
Ngan & Price 1979:12 (Townsville).

as *Dicranema filiforme* Sonder
Lucas 1931:53

as *D. setaceum* Sonder
Bailey 1913:823. May 1965:387. Sonder 1871:58 (Port Denison);
1880:23.

as *S. furcellatum* Zanardini
Cribb 1961:53 (Thursday I.); 1983:65, pl. 18 fig. 3. May
1965:387. Womersley 1958:155 (Arnhem Land).

Solieria robusta (Greville) Kylin 1932:18

Min-Thein & Womersley 1976:7, figs. 1,2, 49.

Cribb 1961:53 (Thursday I.). May 1965:390. Ngan & Price 1979:12 (Townsville). Saenger et al. 1979:401 (Gladstone); 1980:159 (Gladstone). Stephenson et al. 1974:120 (Moreton Bay).

as *S. chordalis* J. Agardh
Bailey 1913:823. Sonder 1871:58 (Rockingham Bay); 1880:28.

Family Nemastomatoaceae

Predaea incraspeda Kraft 1984a:figs. 1-14 (Lord Howe I.).

Predaea laciniosa Kraft 1984a:figs. 25-35 (Heron I., One Tree I., St. Crispin Reef).

Predaea weldii Kraft & Abbott 1971:194, figs. 1-15.

Cribb 1983:55, pl. 12 fig. 2. Kraft 1984a (Heron I., One Tree I., Lord Howe I.).

Family Caulacanthaceae

Areschougia congesta (Turner) J. Agardh 1872:26

Min-Thein & Womersley 1976:55, figs. 18, 19, 57

as *A. laurencia* (Hooker & Harvey) Harvey
Lucas 1935:219 (Lord Howe I.)

Catanelia nipae Zanardini 1872:143, pl.6a figs. 1-7.

Min-Thein & Womersley 1976:50, figs. 17, 56.

Atherton & Dyne 1977:88 (Moreton Bay). Cribb 1978:68 (Hinchinbrook I.); 1979:69 (Moreton Bay). May 1965:360. Ngan & Price 1979:12 (Townsville). Saenger et al. 1977:318 (Cooktown, Townsville, Gladstone, Moreton Bay).

?as *C. opuntia* Greville
Bailey 1913:823. Askenasy 1894:11 (Moreton Bay). Sonder 1880:27 (Broad Sound).

Catanelia subumbellata Tseng 1942:144, figs. 3-5

Cribb 1979:69 (Moreton Bay)

Caulacanthus indicus Weber von Bosse 1921:222, fig. 67.

Cribb 1983:66, pl. 15 fig. 1.

Caulacanthus okamurai Yamada 1933:278

Okamura 1908:129, pl.27 figs. 12-20, pl.28 figs. 13-17 (as *Endocladia complanata*)

Cribb 1979:69 (Moreton Bay)

Caulacanthus salifugus Cribb 1965a:276, pl. 7 (Noosa).

Caulacanthus ustulatus (Mertens ex Turner) Kuetzing 1868:3, pl.8

Searles 1968:46, figs. 19-21, pl. 10a.

Ngan & Price 1979:12 (Townsville).

**Erythroclonium muelleri* Sonder 1852:692.

Min-Thein & Womersley 1976:75, figs. 27,28,59B.

Bailey 1913:823. May 1965:375.

**Erythroclonium sonderi* Harvey 1859: pl.86

Min-Thein & Womersley 1976:84, figs. 61a.

Bailey 1913:823. Dickie 1876:448 (Torres Strait). Lucas 1931:53 (Dunk I.). May 1965:375.

Family Acrotylaceae

**Antrocentrum nigrescens* (Harvey) Kraft & Min Thein
1983:177, figs. 16-35.

as *Rhabdonia nigrescens* Harvey ex Hooker & Harvey
May 1948b:295 (Hervey Bay, Moreton Bay).

as *Solieria mollis* (Harvey) Kylin
Ngan & Price 1979:12 (Townsville).

These records are unlikely to be the southern Australian *A. nigrescens* (Kraft, pers. comm.).

Family Dicranemaceae

Dicranema rosaliae Setchell & Gardner 1924:745, pl. 22 fig. 6

Ngan & Price 1979:13 (Townsville)

? *Wurdemannia* sp. (Wurdemanniaceae), see Kraft 1977:233.

Reptataxis rhizophora (Lucas) Kraft 1977:241, figs. 8, 9,
17, 18 (Lord Howe I.)

as *Sarcocladia* (?) *rhizophora* Lucas 1935:219, fig. 6
(Lord Howe I.)

as *Curdiea rhizophora* (Lucas) May 1965:352, 408.

**Tylopus obtusatus* (Sonder) J. Agardh 1876:428

Kraft 1977:245, figs. 10, 11, 19, 20.

as ?*Curdiea obtusata* (Sonder) Harvey
Dickie 1876:448 (Torres Strait)

Family Mychodeaceae

Mychodea zanardini De Toni & Levi 1888:68

as *M. fastigiata* Zanardini 1874:501 (Lord Howe I.)
Lucas 1909:25; 1935:218 (Lord Howe I.)
? *Dicurella* sp. (Sarcodiaceae), see Kraft 1978:571.

Mychodea halymenioides Zanardini 1874:501 (Lord Howe I.)

Lucas 1909:25; 1935:218 (Lord Howe I.). May 1965:389.

? *Meristotheca* sp. (Solieriaceae), see Kraft 1978:572.

Family Plocamiaceae

**Plocamium angustatum* (J. Agardh) Hooker & Harvey 1847:404

Womersley 1971:11, figs. 2-6.

Lucas 1931:55; 1935:222 (Lord Howe I.). Sonder
1871:61 (Rockingham Bay).

as *P. telfairiae* (Harvey) Kuetzing
May 1965:372.

Plocamium cartilagineum (Linnaeus) Dixon 1967:58

Womersley 1971:22, figs. 36-39

?as *P. coccineum* var. *tenu*e Kuetzing
Sonder 1871:61 (Rockingham Bay)

as *P. coccineum* (Hudson) De Toni
Bailey 1913:824.

?as *P. leptophyllum* Kuetzing
Lucas 1931:55; 1935:221 (Lord Howe I.). May 1965:372.

Plocamium hamatum J. Agardh 1876:338.

Cribb 1983:61, pl. 16, pl. 17 figs. 1-2.

Bailey 1913:824. Chapman 1977:162. Cribb 1969:92 (North West I.); 1975:83 (Masthead I.); 1981:344. Johnston 1917:56 (Caloundra). Laing 1900:300 (Norfolk I.). Lucas 1909:34; 1935:221 (Lord Howe I.). May 1951b:98 (Brampton I.); 1965:372. Reinbold 1900:150 (Norfolk I.). Saenger 1979:54 (Swains Reef). Sonder 1880:18.

**Plocamium mertensii* (Greville) Harvey 1847:122.

Womersley 1971:75, figs. 17-23.

as *P. procerum* var. *mertensii* Harvey
Sonder 1871:62 (Rockingham Bay).

**Plocamium preissianum* Sonder 1845:54

Womersley 1971:20, figs. 29-35.

Bailey 1913:824. May 1965:372.

Family Wurdemanniaceae

Wurdemannia miniata (Drapanard) Feldmann & Hamel 1934:544,
figs. 9-11.

Dawson 1954a:424 fig. 35

Morrissey 1980:108 (Magnetic I.). Sammarco 1983:10 (Britomart Reef).

Family Sebdeniaceae

Sebdenia ceylanica (Harvey) Heydrich 1892:477, pl. 26 figs. 16,17.

Bailey 1913:824. Lucas 1909:33; 1931:54. May 1951b:97 (Brampton I.); 1965:405.

as *Halymenia ceylanica* Harvey
Sonder 1871:63 (Port Denison).

as *Meristotheca ceylanica* (Harv.) Sonder
Sonder 1880:27 (Port Bowen).

Sebdenia maculata (J. Agardh) De Toni 1900:531

Bailey 1913:824. Lucas 1931:54 (Dunk I.). May 1965:405.

Family Sarcodiaceae

Sarcodia ciliata Zanardini 1874:498 (Lord Howe I.)

Lucas 1909:29; 1935:219 (Lord Howe I.). May 1965:405.

Sarcodia montagneana (Hooker & Harvey) J. Agardh 1852a:623

Rasmussen 1964:1, figs. 1-9.

Cribb 1983:62. May 1965:405.

as *S. palmata* Sonder 1871:54 (Cape York).
Bailey 1913:823. Lucas 1931:54. Sonder 1880:22.

Family Hypneaceae

Hypnea boergesenii Tanaka 1941:223, figs. 6-8, pl. 53 fig. 1.

Dawson 1954a:436, fig. 46k.

Ngan & Price 1979:12 (Townsville).

Hypnea cenomyce J. Agardh 1851:452.

Tanaka 1941:250, fig. 21.

Cribb 1978:68 (Hinchinbrook I.). Lucas 1935:221 (Lord Howe I.). May 1951a:87 (Stradbroke I., Green I., Double I., Low Is., Michaelmas Cay); 1965:393.

as *Gracilaria taenioides* J. Agardh.
Lucas 1927:155 (Michaelmas Cay) (see May 1951a:87).

Hypnea cervicornis J. Agardh 1851:451

Mshigeni 1978:868, figs. 1,2.

Bailey 1913:824. Lucas 1931:54. May 1951b:98 (Brampton I.);
1965:393. Morrissey 1980:105 (Magnetic I.).
Sonder 1871:59 (Port Denison, Cape York); 1880:26. Stephenson
et al. 1974:120 (Moreton Bay).

Hypnea cornuta (Lamouroux) J. Agardh 1851:449.

Tanaka 1941:242, text-fig. 14.

Bailey 1913:824. Cribb 1979:69 (Moreton Bay). Lewis et al.
1981:22 (Shoalwater Bay). Lucas 1931:54. Morrissey 1980:104
(Magnetic I.). Ngan & Price 1979:13 (Townsville).
Sonder 1871:59 (Port Denison); 1880:26. Womersley 1958:156
(Arnhem Land).

?as *H. hamulosa* (Esper) Montagne
Womersley 1958:157 (Arnhem Land).

Hypnea divaricata (Turner) Greville 1830:lix

Askenasy 1894:11. Bailey 1913:824. Womersley 1958:156, pl.
4 (Arnhem Land).

Hypnea nidifica J. Agardh 1851:451

Mshigeni 1978:872, figs. 6,7

Bailey 1913:824. Lucas 1931:54. May 1965:394. Sonder 1871:59
(Port Denison); 1880:26 (Cooktown).

Hypnea pannosa J. Agardh 1847:14

Cribb 1983:59, pl. 15, figs. 2-3.

Bailey 1913:824. Lucas 1931:54. May 1965:393. Morrissey
1980:110 (Magnetic I.). Ngan & Price 1979:13 (Townsville).
Price et al. 1976:7 (Lizard I.). Sonder 1871:59 (Port Denison);
1880:26 (Cooktown).

as *H. nidulans* Setchell
Cribb 1966:22 (Heron I.); 1978:68 (Hinchinbrook I.); 1981:342.

Hypnea rugulosa Montagne 1845:151, pl. 13 fig.1

Kuetzing 1868:pl. 27

Bailey 1913:824. Lucas 1909:31; 1931:54. Sonder 1871:60
(Port Denison, Torres St.); 1880:26.

Hypnea spinella (C. Agardh) Kuetzing 1849:759.

Cribb 1983:60, pl. 15 fig. 4.

as *H. esperi* Bory

Cribb 1978:68 (Hinchinbrook I.). Morrissey 1980:104
(Magnetic I.). Ngan & Price 1979:13 (Townsville).

as *H. musciformis* Lamouroux

Bailey 1913:824. Lucas 1931:54 (Dunk I.). Sonder 1871:59 (Torres
St.).

Hypnea valentiae (Turner) Montagne 1840a:161

Mshigeni 1978:878, fig. 15

Bailey 1913:824. Lewis et al. 1981:22 (Shoalwater Bay).
Lucas 1931:54. May 1951b:98 (Brampton I.); 1965:394. Morrissey
1980:105 (Magnetic I.). Ngan & Price 1979:13 (Townsville).
Sonder 1871:59 (Port Denison); 1880:26.

as *H. charoides* Lamouroux

Cribb 1978:68 (Hinchinbrook I.)

as *H. seticulosa* J. Agardh

Bailey 1913:824. Lucas 1927:555 (Michaelmas Cay); 1931:54;
1935:221 (Lord Howe I.). Sonder 1871:59 (Port Denison);
1880:26.

Family Rhizophyllidaceae

Chondrococcus hornemannii (Lyngbye) Schmitz 1895:170

Cribb 1983:35, pl. 8 fig. 2.

Bailey 1913:829. Lucas 1931:57. May 1965:374. Ngan & Price
1979:10 (Townsville). Price et al. 1976:7 (Lizard I.)

as *C. ambiguus* Greville

Reinbold 1900:152 (Norfolk I.).

as *C. harveyi* (J. Agardh) De Toni

Bailey 1913:829. Johnston 1917:56 (Caloundra). Womersley
1958:155, pl. 3 (Arnhem Land). May 1965:374.

as *C. kilneri* (J. Agardh) De Toni

Bailey 1913:829. Lucas 1931:57; 1934:350 (Low Is.).
May 1965:374.

- as *Desmia hornemannii* Lyngbye
Cribb 1978:68 (Hinchinbrook I.).
- as *D. ambigua* (Greville) Harvey
Chapman 1977:162. Laing 1900:300 (Norfolk I.).
- as *D. kilneri* J. Agardh
May 1951b:96 (Brampton I.)
- as *D. pulvinata* C. Agardh
Bailey 1883:706. Mueller 1881:105.
- as *Portieria coccinea* Zanardini
Sonder 1871:54 (Port Denison).

Family Cubiculosporaceae

- Cubiculosporum koronicarpis* Kraft 1973:872, figs. 1-20.
Kraft & Huisman 1981:278, figs. 1-4 (North West I.)
Cribb 1983:66.

ORDER RHODYMENIALES

Family Rhodymeniaceae

- Botryocladia leptopoda* (J. Agardh) Kylin 1931:17, pl. 6 fig. 14.
Cribb 1961:53 (Thursday I.). May 1965:360.
- as *Chrysymenia uvaria* J. Agardh
Bailey 1913:824. Dickie 1876:448 (Torres Strait). Lucas 1931:54.
Sonder 1871:63 (Cape York).
- as *C. uvaria* var. *leptopoda* J. Agardh
Bailey 1913:824. Sonder 1880:18 (Cooktown, Moreton Bay).
- Chrysymenia kaernbachii* Grunow 1889:4.
Cribb 1983:67, pl. 19 fig. 1.
- Coelarthrum boergesenii* Weber van Bosse 1928:473, figs. 207-208.
Cribb 1983:68, pl. 20 figs. 1-4.
- Coelothrix irregularis* (Harvey) Boergesen 1920:389, figs. 373-374.

Trono 1969:66, pl. 6 fig. 6, pl. 7 fig. 5.

Cribb 1983:68.

as *C. indica* Boergesen
Ngan & Price 1979:13 (Townsville); Price et al. 1976:7
(Lizard I.)

Epymenia cuneata (Harvey) J. Agardh 1892:91.

Bailey 1913:824. May 1965:407.

Halichrysis micans (Schmitz) Huve & Huve 1977:106.

Cribb 1983:69, pl. 22 figs. 1-2.

**Hymenocladia gracilarioides* J. Agardh 1876:313.

Kylin 1931:24, pl. 12 fig. 27.

May 1965:387

as *Gracilaria ramalina* Harvey
Dickie 1876:448 (Torres St.).

Rhodymenia anastomosans Weber van Bosse 1926:150, fig. 39.

Cribb 1983:69, pl. 20, figs. 5-7.

Rhodymenia leptophylla J. Agardh 1877:20

Kylin 1931:20, pl. 6 fig. 16.

Cribb 1978:69 (Hinchinbrook I.). Ngan & Price 1979:14
(Townsville).

Family Champiaceae

Champia parvula (C. Agardh) Harvey 1853:76

Cribb 1983:70, pl. 21 fig. 1.

Bailey 1913:824. Borowitzka et al. 1978:370 (One Tree I.). Cribb
1965b:62 (Wilson I.); 1966:22 (Heron I.); 1961:53 (Thursday
I.); 1978:68 (Hinchinbrook I.). Endean et al. 1956:111.
Lucas 1909:34; 1931:54; 1935:221 (Lord Howe I.). May 1951b:99
(Brampton I.); 1965:362. Morrissey 1980:105 (Magnetic I.).
Ngan & Price 1979:14 (Townsville). Saenger 1979:54 (Swains Reef).
Saenger et al. 1980:159 (Gladstone). Stephenson et al. 1974:119
(Moreton Bay).

as *C. affinis* (Hooker & Harvey) J. Agardh
Lucas 1934:350 (Low Is.). May 1965:362.

as *Lomentaria parvula* Gaillon
Sonder 1871:53 (Cape York)

Champia vieillardii Kuetzing 1866:14, pl. 37 e, f

Cribb 1983:70, pl. 21 figs. 2-3.

Morrissey 1980:105 (Magnetic I.)

as *C. compressa* Harvey
Cribb 1954:25, pl. 4 fig. 3 (Caloundra). May 1965:362.

Family Lomentariaceae

Lomentaria corallicola Boergesen 1939:113, figs. 30-32

Cribb 1983:71, pl. 21 figs. 4-6.

ORDER CERAMIALES

Family Ceramiaceae

Aglaothamnion cordatum (Boergesen) Feldman-Mazoyer 1940:459.

Cribb 1983:72, pl. 56 fig. 4.

Anotrichium tenue (C. Agardh) Naegeli 1861:399.

Baldock 1976:556, figs. 59-64, 90.

Cribb 1983:72, pl. 23 figs. 1-5. Lewis et al. 1981:22 (Shoalwater Bay).

as *Griffithsia tenuis* C. Agardh
Cribb 1961:54 (Thursday I.); 1978:68 (Hinchinbrook I.);
Womersley 1958:157 (Arnhem Land).

as *G. thyrigera* (Thwaites) Grunow
Chapman 1977:162. Laing 1900:300 (Norfolk I.). Lucas 1909:48.
Reinbold 1900:151 (Norfolk I.).

Antithamnion antillanum Boergesen 1917:226, figs. 213-216.

Cribb 1983:73, pl. 55 figs. 1-2.

- Lewis 1979:6 (Nth Barnard Is.)
- Antithamnion lherminieri* Nasr 1941:66, figs. 9,10.
- Abbott 1979:215, figs. 5-10
- Cribb 1961:53 (Thursday I.)
- Antithamnion percurrens* Dawson 1957:116, figs. 24a-b.
- Cribb 1983:74, pl. 55 fig. 3.
- Balliella amphiglanda* Huisman & Kraft 1984:figs. 2-15
(Lord Howe I.).
- Balliella grandis* Huisman & Kraft 1984:figs. 27-29
(Heron I., North West I., One Tree I.).
- Balliella repens* Huisman & Kraft 1984:figs. 16-26 (Tryon
I., Heron I., Lord Howe I.).
- Callithamnion byssoides* Arnott in Hooker 1833:342
- Boergesen 1917:218, figs. 205-207
- Cribb 1979:68 (Moreton Bay).
- Callithamnion corymbosum* (Engler) Lyngbye var. *australis* Askenasy
1894:12, pl. 3 figs. 14-18 (Moreton Bay)
- Bailey 1895:58; 1913:828.
- Centroceras apiculatum* Yamada 1944:42.
- Cribb 1983:75, pl. 26 fig. 1, pl. 57 figs. 1-2.
- Centroceras clavulatum* (C. Agardh) Montagne 1846:140.
- Cribb 1983:75, pl. 25 figs. 2-3.
- Bailey 1883:799. Chapman 1977:162 (Norfolk I.). Cribb 1961:54
(Thursday I.); 1965b:62 (Wilson I.); 1966:22 (Heron I.); 1978:68
(Hinchinbrook I.); 1979:69 (Moreton Bay). Edean et al. 1956:111
(Cape Edgecombe, Yorkeys Knob). Lewis et al. 1981:22 (Shoalwater
Bay). May 1951b:99 (Brampton I.); 1965: 371. Morrissey 1980:104
(Magnetic I.). Ngan & Price 1979:14 (Townsville). Saenger
1979:54 (Swains Reef). Sammarco 1983:8 (Britomart Reef).

- Womersley 1958:157 (Arnhem Land).
- as *var. cryptacanthum* Kuetzing
Sonder 1871:64 (Cape York)
- as *var. micracanthum* Kuetzing
Sonder 1871:64 (Port Denison)
- as *Ceramium clavulatum* C. Agardh
Bailey 1913:828. Johnston 1917:56 (Caloundra). Lucas 1927:555
(Michaelmas Cay); 1931:56.
- Centroceras minutum* Yamada 1944:42.
Cribb 1983:76, pl. 25 fig. 1.
- Ceramium camouii* Dawson 1944:319, pl. 51 figs. 2-3.
Cribb 1983:78, pl. 27 figs. 5-6, pl. 58 figs. 1-4.
- Ceramium clarionense* Setchell & Gardner 1930:170, pl. 7 figs. 25-27.
Cribb 1983:79, pl. 60 figs. 3-4.
Lewis et al. 1981:22 (Shoalwater Bay)
- Ceramium cliftonianum* J. Agardh 1876:93
Womersley 1978:240, figs. 4 g-h, 15 f-j.
Saenger et al. 1979:401 (Gladstone); 1980:159 (Gladstone).
- ?as *C. fastigiatum* (Roth) Harvey
Ngan & Price 1979:14 (Townsville).
- Ceramium codii* (Richards) G. Mazoyer 1938:324
Cribb 1983:80, pl. 27 figs. 1-4.
- Ceramium flaccidum* (Kuetzing) Ardissonne 1871:40
Cribb 1983:82, pl. 31 fig. 2, pl. 59 figs. 1-4.
Lewis 1979:6 (Nth. Barnard Is.). Lewis et al. 1981:22
(Shoalwater Bay).
- as *C. gracillimum* Griffith & Harvey
May 1951b:99 (Brampton I.)
- as *C. gracillimum var. byssoideum* (Harvey) Mazoyer.

Cribb 1954:25, pl. 5 fig. 4 (Southport, Moreton Bay); 1961:54 (Thursday I.); 1966:22 (Heron I.); 1969:90 (North West I.); 1978:68 (Hinchinbrook I.). Morrissey 1980:105 (Magnetic I.). Ngan & Price 1979:14 (Townsville). Price et al 1976:7 (Lizard I.)

as *C. recortiatum* Dawson
Borowitzka et al. 1978:370 (One Tree I.)

as *C. taylorii* Dawson
Cribb 1978:68 (Hinchinbrook I.)

Ceramium huysmansii Weber van Bosse 1923:322 fig. 115

Cribb 1983:83, pl. 60 figs. 1-2.

Cribb 1961:54 (Thursday I.)

Ceramium maryae Weber van Bosse 1923:324, figs. 117, 118.

Cribb 1983:84, pl. 61 figs. 1-2.

Cribb 1969:91 (North West I.); 1978:68 (Hinchinbrook I.).
Ngan & Price 1979:14 (Townsville).

Ceramium mazatlanense Dawson 1950:130, pl.2 figs. 14,15.

Cribb 1983:85, pl. 62 figs. 1-3.

Cribb 1978:68 (Hinchinbrook I.); 1979:69 (Moreton Bay).
Ngan & Price 1979:14 (Townsville).

Ceramium procumbens Setchell & Gardner 1924:772.

Dawson 1954a:448, fig. 56c, d.

Sammarco 1983:8 (Britomart Reef).

Ceramium punctiforme Setchell 1924:158, fig. 29.

Cribb 1983:86, pl. 61 figs. 3-4.

Ceramium setchellii Lucas 1935:226 (Lord Howe I.)

Ceramium tenuissimum var. *pygmaeum* (Kuetzing) Hauck 1888:450

Kuetzing 1862:pl. 75a-c (as *Hormoceras pygmaeum*)

Bailey 1913:828.

as *C. pygmaeum* Kuetzing
Askenasy 1894:13 (Moreton Bay). Bailey 1895:59. Lucas 1931:56.
Sonder 1871:64 (Cape York); 1880:13.

Ceramium vagabunde Dawson 1957:121, fig. 27e.

Trono 1969:75, pl.10 figs. 1,2.

Price et al. 1976:7 (Lizard I.)

Crouania capricornica Saenger & Wollaston 1982:79, pl. 6 (Gladstone)

Cribb 1983:89, pl. 56 figs. 1-2.

?as *C. minutissima* Yamada
Cribb 1961:53 (Thursday I.). Lewis et al. 1981:22
(Shoalwater Bay). May 1965:367.

Euptilota articulata (J. Agardh) Schmitz 1896:7.

Cribb 1983:90, pl. 56 fig. 3.

Euptilota formosissima (Montagne) Kuetzing 1849:671

Kuetzing 1862:pl.59a-f.

Lucas 1935:226 (Lord Howe I.). May 1965:375.

**Griffithsia crassiuscula* C. Agardh 1824:145

Baldock 1976:526, figs. 11-13, 77.

as *G. flabelliformes* Harvey
Levring 1946:224 (Moreton Bay).

Griffithsia heteromorpha Kuetzing 1863:2, pl. 3.

Cribb 1983:91, pl. 24 figs. 2-4.

Morrissey 1980:111 (Magnetic I.)

Griffithsia subcylindrica Okamura 1930:99

Itono 1977b:49, 157, 211, figs. 28i-k, 45c,d.

Cribb 1978:68 (Hinchinbrook I.); Cribb 1983:92, pl. 24 fig. 1.

Gymnophycus hapsiphorus Huisman & Kraft 1983:289, figs. 14-23
(Lord Howe I., One Tree I.).

Gymnophycus hypispermis Huisman & Kraft 1983:286,
figs. 2-13 (Mooloolabah).

Haloplegma duperreyi Montagne 1842:258, pl.7 fig.1.

Cribb 1983:92, pl. 28 figs. 1-3.

Bailey 1913:828. Cribb 1975:82 (Masthead I.); 1978:68
(Hinchinbrook I.). Lucas 1931:56. May 1965:403. Saenger 1979:54
(Swains Reef). Sonder 1871:64 (Cape York); 1880:12.

**Monosporus australis* (Harvey) J. Agardh 1876:610

Baldock 1976:561, figs. 65, 91

Levring 1946:224 (Moreton Bay).

as *Corynospora australis* Harvey
May 1965:364.

Monosporus indicus Boergesen 1931:12, fig. 8.

Huisman & Kraft 1982:189, fig. 38 (Lord Howe I.).

as *Neomonospora pedicellata* var. *tenuis* Feldmann-Mazoyer
Sammarco 1983:8 (Britomart Reef).

**Ptilocladia australis* (Harvey) Wollaston 1968:265, figs. 5e-j, 12.

as *Crouania australis* (Harvey) J. Agardh
May 1965:367. Okamura 1904:91 (Torres Strait).

Seirospora occidentalis Boergesen 1909:14.

Cribb 1983:93, pl. 55 fig. 4.

Spyridia filamentosa (Wulfen) Harvey 1833:336.

Womersley & Cartledge 1975:222, figs. 1, 3a,b.

Askenasy 1894:13 (Moreton Bay). Bailey 1913:828. Chapman
1977:162 (Norfolk I.). Cribb 1961:54 (Thursday I.); 1978:69
(Hinchinbrook I.); 1979:69 (Moreton Bay); 1983:94, pl. 26 figs. 2-
4. Laing 1900:300 (Norfolk I.). Lewis 1979:7 (Nth. Barnard
Is.). Lewis et al. 1981:22 (Shoalwater Bay). May 1951b:99

(Brampton I.). Morrissey 1980:105 (Magnetic I.). Lucas 1934:350 (Low Is.). Ngan & Price 1979:15 (Townsville). Okamura 1904:91 (Torres Strait). Price et al. 1976:7 (Lizard I.). Reinbold 1900:152 (Norfolk I.). Saenger et al. 1977:318 (Stradbroke I.); 1980:159 (Gladstone). Sonder 1871:62 (Cape York). Stephenson et al. 1974:120 (Moreton Bay). Womersley 1958:157 (Arnhem Land).

as *S. breviarticulata* J. Agardh
Bailey 1913:828. Lucas 1909:52; 1931:56. May 1965:369.

as *S. biannulata* J. Agardh
May 1965:369.

as *S. spinella* Sonder
Lucas 1909:52. May 1965:369.

Wrangelia argus (Montagne) Montagne 1856:444.

Cribb 1983:94, pl. 66 fig. 1.

Wrangelia penicillata (C. Agardh) C. Agardh 1828:138

Taylor 1928:144, pl.20 figs.11,12,19,pl.32 figs.1,7.

Lucas 1931:53. May 1965:365. Sonder 1871:53 (Cape York).

Wrangelia plumosa Harvey 1844:450

Gordon 1972:21, figs. 4, 5, 10 g, h, j, 51

Lewis et al. 1981:22 (Shoalwater Bay).

Family Delesseriaceae

Acrosorium uncinatum (Turner) Kylin 1924:78 fig. 61.

Cribb 1983:96, pl. 29 figs. 2-4.

Caloglossa adnata (Zanardini) De Toni 1900:730

Dawson 1954a:451, fig. 58b

Atherton & Dyne 1977:84 (Moreton Bay). Cribb 1979:69 (Moreton Bay). May 1965:395. Saenger et al. 1977:318 (Gladstone, Noosa to Southport).

Caloglossa bombayensis Boergesen 1933:127, figs. 10-12

May 1965:395. Ngan & Price 1979:15 (Townsville). Saenger et al.

1977:318 (Moreton Bay).
Caloglossa lepriurii (Montagne) J. Agardh 1876:499

Papenfuss 1961:8, figs. 1-30.

Atherton & Dyne 1977:88 (Moreton Bay). Cribb 1978:68
(Hinchinbrook I.); 1979:69 (Moreton Bay). Endean et al. 1956:111
(Townsville). May 1965:395. Saenger et al. 1977:318 (Cooktown to
Gladstone, Noosa to Southport).

as *C. mnioides* Harvey
Bailey 1913:825.

var. *hookeri* (Harvey) Post 1943:127 figs. 3-5, 24
Ngan & Price 1979:15 (Townsville).

Caloglossa ogasawaraensis Okamura 1897:13 figs. a-d.

Atherton & Dyne 1977:84 (Moreton Bay). Cribb 1979:69 (Moreton
Bay). Saenger et al. 1977:318 (Cooktown, Gladstone, Moreton Bay,
Southport).

**Chauvinella coriifolia* (Harvey) Papenfuss 1956:159

Harvey 1862:pl. 240 (as *Chauvinia coriifolia*).

as *Chauvinia coriifolia* Harvey
Johnston 1917:56 (Caloundra).

Hypoglossum barbatum Okamura 1900:19, pl. 7.

Okamura 1904:89 (Torres Strait).

Hypoglossum harveyanum (J. Agardh) Womersley & Shepley
1982:330, figs. 1d, 5-6 (Gladstone, Hervey Bay).

Hypoglossum hypoglossoides (Harvey) Womersley & Shepley
1982:326, figs. 1b-c, 4.

as *H. spathulatum* sensu J. Agardh
Cribb 1961:54 (Thursday I.); 1983:96, pl. 42 figs. 1-2. Levring
1946:225 (Moreton Bay).

Martensia elegans Hering 1841:92

Lewis et al., 1981:22 (Shoalwater Bay). May 1965:406.

as *Mesotrema elegans* (Hering) Papenfuss
Cribb 1954:25, pl. 4 fig. 5 (Coolangatta, Gold Coast, Pt.

Lookout, Caloundra).

Martensia speciosa Zanardini 1874:488 (Lord Howe I.)

Lucas 1909:35; 1935:222, pl. 8 fig. 1 (Lord Howe I.)

Myriogramme bombayensis Boergesen 1931:23, fig. 15, pl. 2 fig. 4

Cribb 1983:98, pl. 30 fig. 1.

Cribb 1954:26 (Moreton Bay). May 1965:400.

Myriogramme carnea (Rodriguez) Kylin 1924:58.

Cribb 1983:98, pl. 30 figs. 2-5.

Nitophyllum tongatense Grunow 1874:44

Cribb 1983:99, pl. 30 figs. 6-9.

Platysiphonia marginalis Wynne et al. 1984:figs. 2-9, 11-23
(One Tree I., Lord Howe I.).

Platysiphonia miniata (C. Agardh) Boergesen 1931:8, figs. 1-5

Womersley & Shepley 1958:194, figs. 83-99.

Cribb 1961:54 (Thursday I.). May 1965:377.

Taenioma nanum (Kuetzing) Papenfuss 1952:179

Cribb 1983:100, pl. 29 fig. 1.

Taenioma perpusillum (J. Agardh) J. Agardh 1863:1257

Dawson 1954a:451, fig. 58a

Cribb 1954:26, pl. 4 fig. 2 (Moreton Bay, Noosa); 1978:69
(Hinchinbrook I.). Lewis et al. 1981:23 (Shoalwater Bay).
May 1965:377.

Vanvoorstia spectabilis Harvey 1854:144, pl. 5.

Cribb 1983:100, pl. 32 fig. 1, pl. 63 fig. 4.

Family Dasyaceae

Dasya baillouviana (Gmelin) Montagne 1840a:164.

Cribb 1983:101, pl. 65 figs. 1-4.

Dasya caraibica Boergesen 1919:319, figs. 322-324.

Cribb 1983:102, pl. 45 fig. 2, pl. 57 figs. 3-4.

Dasya cuspidifera Sonder 1871:51 (Cape York).

Bailey 1913:828. Lucas 1931:56.

Dasya elongata Sonder 1846:179

Bailey 1913:828. Lucas 1931:56. Sonder 1871:51 (Port Denison);
1880:36.

Dasya fruticulosa Lucas 1935:225, pl. 9 fig. 2 (Lord Howe I.)

Dasya iyengaraii Boergesen 1937b:345, figs. 16-17.

Cribb 1983:103, pl. 64 figs. 16-17.

Dasya pacifica Harvey ex J. Agardh 1863:1223.

May 1951b:99 (Brampton I.)

Dictyurus purpurascens Bory in Belanger et al. 1834:170.

Cribb 1983:104, pl. 66 fig. 2.

Cribb 1961:54 (Thursday I.); 1978:68 (Hinchinbrook I.)
May 1965:360.

Heterosiphonia multiceps (Harvey) Falkenberg 1901:654.

Kuetzing 1863:27, pl. 77 (as *Dasya multiceps*)

Bailey 1913:828. Cribb 1978:68 (Hinchinbrook I.). Lucas 1931:56.
May 1965:382. Ngan & Price 1979:15 (Townsville). Saenger et al.
1980:159 (Gladstone).

as *Dasya multiceps* Harvey

Bailey 1883:789. Sonder 1871:52 (Cape York); 1880:36.

Heterosiphonia wurdemannii var. *laxa* Boergesen 1919:326, figs. 327,328.

Cribb 1983:105, pl. 64 fig 1.

Lewis 1979:6 (Nth. Barnard I.). Ngan & Price 1979:15
(Townsville).

**Thuretia australasica* (Sonder) Parsons 1975:644, figs. 26,27,45b.

as *T. teres* Harvey
Dickie 1876:447 (Torres Strait)
?*Dictyurus* sp. (Dasyaceae), see Parsons 1975:644.

Family Rhodomelaceae

Acanthophora dendroides Harvey 1855a:538.

Boergesen 1934:22, fig. 14, pl. 4

Bailey 1913:825. Cribb 1978:68 (Hinchinbrook I.). May 1965:384.

Acanthophora muscoides (Linnaeus) Bory 1829:156

Taylor 1960:619, pl.72, fig. 3

Bailey 1913:825. Cribb 1961:55 (Thursday I.). Lucas 1931:55.
Ngan & Price 1979:15 (Townsville).

as var. *ramosissima*
Sonder 1871:50 (Cape York)

as *A. ramulosa* Lindley
Bailey 1883:789. Sonder 1880:33 (Cooktown).

Acanthophora spicifera (Vahl) Boergesen 1910:201, figs. 18,19.

Cribb 1983:105, pl. 32 fig. 2.

Cribb 1961:55 (Thursday I.); 1978:68 (Hinchinbrook I.).
Lewis 1979:6 (Nth. Barnard I.). May 1951b:101 (Brampton
I.); 1965:384. Morrissey 1980:105 (Magnetic I.). Ngan & Price
1976:7 (Townsville). Price et al. 1976:7 (Lizard I.).
Womersley 1958:158 (Arnhem Land).

as *A. orientalis* J. Agardh
Bailey 1913:825. Lucas 1909:39; 1927:555 (Michaelmas Cay);
1931:55 (Dunk I.); 1934:350 (Low Is.). Sonder 1871:50 (Cape York,
Port Denison); 1880:33.

as *A. thierii* Lamouroux
Bailey 1913:825. Dickie 1876:447 (Torres Strait).

Acrocystis nana Zanardini 1872:145, pl. 8 fig. a 1-6

Dawson 1954a:461, figs. 63 b, c.

Ngan & Price 1979:15 (Townsville).

Amansia daemellii (Sonder) J. Agardh 1892:172

Falkenberg 1901:422, pl.7 figs. 6,7.

Bailey 1913:827. Cribb 1961:54 (Thursday I.). Lucas
1909:45; 1931:56 (Bowen). May 1965:396.
Okamura 1904:91 (Torres Strait).

as *Vidalia daemellii* Sonder 1871:49, pl. 1 figs. 1-10
(Cape York).

Bailey 1883:788. Sonder 1880:32 (Keppel Bay).

Amansia dietrichiana Grunow 1874:49.

Bailey 1913:827. Lucas 1931:56. May 1965:396. Sonder
1880:31 (Port Mackay, Port Denison).

Amansia glomerata C. Agardh 1824:247

Cribb 1983:106, pl. 31 fig. 1.

Bailey 1913:827. Cribb 1966:23 (Heron I.); 1975:82
(Masthead I.); 1981:342. Dickie 1876:447 (Torres Strait). Lewis
1979:6 (Nth. Barnard Is.). Lucas 1931:56; 1935:224 (Lord Howe
I.); 1934:350 (Low Is.). May 1951b:100 (Brampton I.);
1965:396. Saenger 1979:54 (Swains Reef). Sonder 1871:49 (Cape
York, Port Denison); 1880:31 (Whitsunday I.).

Amansia pumila (Sonder) J. Agardh 1892:172

Bailey 1913:827. Cotton 1913:254 (Dunk I.). Lucas 1909:45;
1931:56. May 1965:396.

as *Vidalia pumila* Sonder 1871:50, pl. 1 figs. 11-15 (Cape York).
Bailey 1883:788. Sonder 1880:32.

Bostrychia binderi Harvey 1847:68, pl. 28

Tseng 1943a:177, pl. 1, figs. 7,8

Cribb 1978:68 (Hinchinbrook I.). May 1965:376.
Ngan & Price 1979:15 (Townsville). Saenger et al. 1977:317 (Gulf
of Carpentaria, Moreton Bay).

forma terrestris (J. Agardh) Post 1936:32

Cribb 1965a:279 (Noosa).

Bostrychia flagellifera Post 1936:34

Atherton & Dyne 1977:84 (Moreton Bay). Cribb 1979:68 (Moreton Bay). Saenger et al. 1977:317 (Moreton Bay).

Bostrychia hongkongensis Tseng 1943a:171, pl. 3.

Cribb 1979:68 (Moreton Bay).

Bostrychia intricata (Bory) Montagne 1852:317

Tseng 1943a:174, pl. 1 figs. 4,5

Cribb 1979:68 (Moreton Bay). May 1965:377.

as *B. mixta* Hooker & Harvey
Saenger et al. 1977:317 (Moreton Bay).

Bostrychia kelanensis Grunow ex Post 1936:20

Tseng 1943a:169, pl. 2 figs. 1-5

Atherton & Dyne 1977:84 (Moreton Bay). Cribb 1979:68 (Moreton Bay). May 1965:377. Ngan & Price 1979:16 (Townsville). Saenger et al. 1977:317 (Noosa to Southport).

Bostrychia moritziana (Sonder ex Kuetzing) J. Agardh 1863:862.

Kuetzing 1865:pl.24d-g (as *B. cornigera*)

Atherton & Dyne 1977:84 (Moreton Bay). Cribb 1978:68 (Hinchinbrook I.); 1979:68 (Moreton Bay). May 1965:376. Saenger et al. 1977:317 (Moreton Bay, Gold Coast).

Bostrychia radicans (Montagne) Montagne ex Kuetzing 1849:839

Tseng 1943a:168, pl. 1 figs. 1-3

Cribb 1978:68 (Hinchinbrook I.); 1979:68 (Moreton Bay). May 1965:376. Ngan & Price 1979:16 (Townsville). Saenger et al. 1977:317 (Gulf of Carpentaria, Gladstone, Noosa).

Bostrychia simpliciuscula Harvey ex J. Agardh 1863:854

Tseng 1943a:173, pl. 2 figs. 6,7.

Cribb 1965a:260 (Noosa); 1979:68 (Moreton Bay). Saenger et al. 1977:317 (Noosa).

Bostrychia tenella (Vahl) J. Agardh 1863:869

Cribb 1983:106, pl. 66 figs. 3-4.

Atherton & Dyne 1977:84 (Moreton Bay). Cribb 1978:68 (Hinchinbrook I.); 1979:68 (Moreton Bay). May 1965:376. Ngan & Price 1979:16 (Townsville). Saenger et al. 1977:317 (Gladstone, Noosa to Southport).

Chondria armata (Kuetzing) Okamura 1907:69, pl. 16 figs. 9-19.

Cribb 1983:107, pl. 33 fig. 1.

Cribb 1978:68 (Hinchinbrook I.). Morrissey 1980:105 (Magnetic I.).

Chondria dangeardii Dawson 1954a:460, figs. 62f-g.

Cribb 1983:108, pl. 34 fig. 1.

Chondria dasyphylla (Woodward) C. Agardh 1817:xviii.

Dawson 1963:444, pl. 140 fig. 4, pl. 163

Bailey 1913:825. Johnston 1917:56 (Caloundra). Ngan & Price 1979:16 (Townsville).

Chondria lancifolia Okamura 1935:43, pl. 323 figs. 1-10

Cribb 1961:55 (Thursday I.)

Chondria minutula Weber van Bosse 1923:349, pl. 10 figs. 11-12.

Cribb 1983:108, pl. 34 figs. 4-5.

Chondria rainfordii Lucas 1927:560, pls. 45,47 fig. 2 (Bowen)

Cribb 1978:68 (Hinchinbrook I.); Lucas 1931:55,

Ngan & Price 1979:16 (Townsville)

as *C. tenuissima* C. Agardh
Sonder 1871:51 (Port Denison)

Chondria repens Boergesen 1924:300, fig. 40

Cribb 1983:109, pl. 34 fig. 3.

**Corynecladia umbellata* J. Agardh 1876:643

Kuetzing 1869:10, pl. 28 (as *Corallopsis australasica*)

as *Corallopsis australasica* Sonder
Dickie 1876:448 (Torres St.)

Dasyclonium flaccidum (Harvey) Kylin 1956:534

Scagel 1962:1024, figs.4, 32-34.

Lewis et al. 1981:22 (Shoalwater Bay).

as *Euzoniella flaccida* (Harvey) Falkenberg
Scagel 1953:81 (Moreton Bay).

**Dictymenia sonderi* Harvey 1858:pl.21.

Falkenberg 1901:285, pl.19 figs. 13-16.

Dickie 1876:447 (Torres Strait).

Dictymenia tridens (Mertens ex Turner) Greville 1830:11

Lucas & Perrin 1947:281, fig. 128.

Dickie 1876:447 (Torres Strait). Lucas 1931:55. May 1965:396.
Sonder 1871:55 (Torres St.).

Digenea simplex (Wulfen) C. Agardh 1822:389

Cribb 1983:109, pl. 32 fig. 3.

Bailey 1913:827. Cotton 1913:254 (Dunk I.). Cribb 1978:68
(Hinchinbrook I.). Lucas 1909:41; 1927:555 (Michaelmas Cay);
1931:55 (Bowen); 1934:350 (Low Is.). May 1951b:100 (Brampton
I.); 1965:382. Sonder 1871:51 (Cape York); 1880:34 (Cape
Upstart).

**Echinothamnion hookeri* (Harvey) Kylin 1956:506.

Lucas & Perrin 1947:263, fig. 119 (as *Polysiphonia hookeri*)

as *Polysiphonia hookeri* Harvey
Dickie 1876:447 (Torres St.)

Enantiocladia robinsonii (J. Agardh) Falkenberg 1901:441.

Chapman 1977:162 (Norfolk I.). Lucas 1909:46; 1935:225 (Lord
Howe I.). May 1965:397

as *Amansia robinsoni* J. Agardh
Laing 1900:300 (Norfolk I.).

Endosiphonia spinuligera Zanardini 1878:34

Dawson 1956:58, fig. 61.

May 1951b:100 (Brampton I.); 1965:377.

Fernandosiphonia unilateralis Levring 1941:660, figs. 28, 29,
pl. 53 fig. 2.

Cribb 1954:26 pl. 4 fig. 1 (Noosa, Mooloolabah, Caloundra).

May 1965:380.

Herposiphonia insidiosa (Greville ex J. Agardh) Falkenberg 1901:317.

Dawson 1954a:452, figs. 58 h, i.

Cribb 1978:68 (Hinchinbrook I.). Ngan & Price 1979:16
(Townsville).

Herposiphonia obscura Hollenberg 1968c:549, fig. 25

Cribb 1978:68 (Hinchinbrook I.); 1983:110.

Herposiphonia pacifica Hollenberg 1968c:549, figs 2a-b, 4, 19.

Cribb 1983:111, pl. 68 fig. 2.

Herposiphonia subdisticha Okamura 1899:11, pl. 1 figs. 12-14

Hollenberg 1968c:554, fig. 11

Okamura 1904:90 (Torres Strait)

Herposiphonia tenella (C. Agardh) Schmitz 1889:449

Cribb 1983:111, pl. 67 figs. 1-4.

Borowitzka et al. 1978:370 (One Tree I.). Cribb 1961:54 (Thursday I.); 1965b:62 (Wilson I.); 1966:23 (Heron I.); 1969:90 (North West I.); 1978:68 (Hinchinbrook I.).
Lewis 1979:6 (Nth. Barnard Is.). Lewis et al. 1981:23 (Shoalwater Bay).

forma *secunda* (C. Agardh) Hollenberg 1968c:556.

Cribb 1983:112, pl. 68 fig. 1.

Cribb 1979:69 (Moreton Bay). Ngan & Price 1979:16 (Townsville).

as *H. secunda* (C. Agardh) Ambronn

Cribb 1966a:23 (Heron I.); Okamura 1904:90 (Torres Strait).

Jeannerettia lobata Hooker & Harvey in Harvey 1847:20

Lucas & Perrin 1947:278, fig. 125 (as *Pollexfenia lobata*).

as *Pollexfenia lobata* (Hooker & Harvey) Falkenberg
Bailey 1913:827. Lucas 1931:55 (Dunk I.).
May 1965:399.

**Jeannerettia pedicellata* (Harvey) Papenfuss 1942:448.

Lucas & Perrin 1947:278, fig. 124 (as *Pollexfenia lobata*).

as *Pollexfenia pedicellata* Harvey
Dickie 1876:447 (Torres St.).

Laurencia botryoides (Turner) Gaillon 1828:363

Saito & Womersley 1974:835, figs. 4a, b, 17.

Lucas 1934:350 (Low Is.)

Laurencia brongniartii J. Agardh 1841:20.

Cribb 1983:114, pl. 36 fig. 4.

Cribb 1978:68 (Hinchinbrook I.)

as *L. coccinea* Montagne
Bailey 1883:790

as *L. concinna* Montagne

Bailey 1913:825. Chapman 1977:162 (Norfolk I.). Cribb 1958:162,
pl. 2 figs. 1-4, pl. 13 figs. 1,2 (Pt. Lookout, Caloundra, Noosa,

Elliott Hds., Port Douglas, Pt. Archer); 1961:55 (Thursday I.). Johnston 1917:56 (Caloundra). Laing 1900:300 (Norfolk I.). Lucas 1909:39; 1931:55 (Dunk I.); 1935:223, pl. 9 fig. 1 (Lord Howe I.). Reinbold 1900:151 (Norfolk I.). Sonder 1871:53 (Torres St.); 1880:30 (Cooktown, Port Denison, Keppel I.).

as *L. grevilleana* Harvey
Dickie 1876:448 (Torres Strait).

Laurencia carolinensis Saito 1969:154, figs. 6, 7a-c.

Cribb 1983:115, pl. 39 figs. 1-4.

Laurencia chinensis Tseng 1943b:198, pl.3 figs. 1-3

Cribb 1978:68 (Hinchinbrook I.)

Laurencia concreta Cribb 1983:116, pl. 38 figs. 1-2 (Fairfax I.).

**Laurencia cruciata* Harvey 1855a:544

Saito & Womersley 1974:843, figs. 5c, 24.

Cribb 1958:166 (Caloundra, Tannum). Levring 1946:226 (Cairns).

Records incorrect, see Saito & Womersley 1974:845.

Laurencia dotyi Saito 1969:154, figs. 9a-c, 10a,b

Ngan & Price 1979:16 (Townsville).

**Laurencia filiformis* (C. Agardh) Montagne 1845:125

Cribb 1983:117, pl. 37 fig. 2.

Dickie 1876:447 (Torres Strait). Lucas 1931:55.

Sonder 1871:52 (Torres St.).

forma *heteroclada* (Harvey) Saito & Womersley 1974:834.

as *L. heteroclada* Harvey
Chapman 1977:162 (Norfolk I.). Cribb 1958:175, pl. 10 figs. 1-11 (Moreton Bay, Caloundra, Noosa, Elliot Hds, Tannum); 1965b:62 (Wilson I.); 1978:69 (Hinchinbrook I.). Laing 1900:300 (Norfolk I.). Lucas 1909:38. Reinbold 1900:151 (Norfolk I.).

as *L. heteroclada* f. *decussata* Cribb 1958:176, pl. 11 figs. 1-3, pl. 12 figs. 1-4 (Coolangatta, Gold Coast).

Queensland records of *L. filiformis* considered doubtful, see Saito & Womersley 1974:835.

Laurencia flexilis Setchell 1926:101, pl. 19 figs. 1-6

Cribb 1983:118, pl. 36 figs. 1-2.

Cribb 1965b:62 (Wilson I.); 1966:23 (Heron I.);
1969:91 (North West I.); 1972:97 (Hoskyn I.); 1975:82
(Masthead I.); 1978:68 (Hinchinbrook I.); 1981:343.

as *L. flagellifera* J. Agardh
Chapman 1977:162. Cribb 1958:165 (Noosa, Elliot Hds., Ball Bay,
Low Is.). Laing 1900:300 (?Norfolk I.). Reinbold 1900:151
(Norfolk I.).

**Laurencia forsteri* (Mertens ex Turner) Greville 1830:lii

Saito & Womersley 1974:823, figs. 1e,8.

Bailey 1913:825.

Laurencia gracilis Hooker & Harvey in Harvey 1847:84.

Yamada 1931:212, fig. M, pl. 12.

Bailey 1913:825. Cribb 1958:171, pl. 4 figs. 7-10 (Moreton Bay,
Caloundra, Tannum, Ball Bay); 1978:68 (Hinchinbrook I.).
Ngan & Price 1979:16 (Townsville). Sonder 1880:29 (Cooktown).

Laurencia humilis Setchell & Gardner 1930:156, pl. 9 figs. 32-33.

Cribb 1983:119, pl. 41 fig. 4.

Laurencia intricata Lamouroux 1813:43, pl. 3 figs. 8-9.

Cribb 1983:119, pl. 41 fig. 5.

Laurencia majuscula (Harvey) Lucas 1935:223 (Lord Howe I.).

Cribb 1983:120, pl. 37 fig. 3.

Lewis et al. 1981:23 (Shoalwater Bay). Morrissey 1980:105
(Magnetic I.). Ngan & Price 1979:17 (Townsville);
Price et al. 1976:8 (Lizard I.).

as *L. dendroidea* J. Agardh
Bailey 1913:825. Chapman 1977:162 (Norfolk I.). Laing 1900:300
(Norfolk I.). Lucas 1909:38; 1931:55. Reinbold 1900:151
(Norfolk I.). Sonder 1880:29.

- as *L. obtusa* var. *majuscula* Harvey
Cribb 1961:55 (Thursday I.); 1965b:62 (Wilson I.);
1969:89 (North West I.); 1975:81 (Masthead I.).
Sonder 1871:52 (Port Denison).
- as *L. vieillardii* Kuetzing
Bailey 1883:790. Sonder 1871:52 (Cape York); 1880:29.
- var. *elegans* (Lucas) Saito & Womersley 1974:821.
- as *L. elegans* Lucas 1935:222, pl. 8, fig. 2, text-fig. 7
(Lord Howe I.)

Laurencia mariannensis Yamada 1931:200, figs. f-g, pl. 5b.

Cribb 1983:121, pl. 37 fig. 1.

Laurencia moretonensis Cribb 1958:164, pl. 3 figs. 3-8
(Moreton Bay, Ball Bay).

Cribb 1978:69 (Hinchinbrook I.).

Laurencia nidifica J. Agardh 1852b:749

Saito 1969:152, fig. 5.

Bailey 1913:825. Cribb 1958:168, pl. 5 fig. 12, pl. 6 figs. 1-3
(Moreton Bay, Southport, Tannum, Ball Bay);
1978:69 (Hinchinbrook I.); 1979:69 (Moreton Bay).
Lucas 1931:55 (Bowen). Saenger et al. 1977:318 (Gladstone to
Moreton Bay).

- as var. *tenoir* Sonder
Sonder 1871:53 (Gulf of Carpentaria); 1880:29.

Laurencia obtusa (Hudson) Lamouroux 1813:42.

Saito 1967:5, text-figs. 1-5, pls. 1,2.

Bailey 1913:825. Borowitzka 1981:100 (One Tree I.). Cribb
1958:173, pl. 9 fig. 3 (Moreton Bay); 1961:55 (Thursday I.);
1966:23 (Heron I.); 1969:89 (North West I.); 1972:97 (Hoskyn I.);
1975:81 (Masthead I.); 1978:69 (Hinchinbrook I.); 1981:342.
Dickie 1876:447 (Torres Strait). Johnston 1917:56 (Caloundra).
Lewis 1979:6 (Nth. Barnard Is.). Lewis et al. 1981:23 (Shoalwater
Bay). Lucas 1927:555 (Michaelmas Cay); 1931:55 (Dunk I.). May
1951b:101 (Brampton I.). Morrissey 1980:104 (Magnetic I.). Price
et al. 1976:8 (Lizard I.). Saenger et al. 1980:159 (Gladstone).
Sonder 1871:52 (Cape York, Torres St.). Womersley 1958:158
(Arnhem Land).

var. *compacta* Cribb 1958:174, pl. 7 figs. 1-5 (Gold Coast, Pt. Lookout, Caloundra, Noosa).
Cribb 1966b:62 (Wilson I.).

var. *divaricata* (J. Agardh) Yamada 1931:223

as *L. divaricata* J. Agardh
Mueller 1881:105.

var. *mollissima* Cribb 1958:175 pl. 9, figs. 1, 2
(Moreton Bay).
This variety is not of *L. obtusa* but belongs in Section
Chondrophycus, see Saito & Womersley, 1974:843.

var. *racemosa* Kuetzing 1865:20, pl. 55a, b.
Chapman 1977:162 (Norfolk I.).

var. *snackeyi* (Weber van Bosse) Yamada 1931:225, pl. 16b.
Cribb 1983:121, pl. 37 fig. 4.
Cribb 1975:83 (Masthead I.)

Laurencia pannosa Zanardini 1872:139, pl. 6 fig. b 1, 2.

Cribb 1983:122, pl. 42 fig. 3.

Bailey 1913:825. Cribb 1966:23 (Heron I.). Mueller 1881:105.

Laurencia papillosa (Forsskal) Greville 1830:52

Yamada 1931:190, pl. 1a, b.

Bailey 1913:825. Borowitzka et al. 1978:370 (One Tree I.).
Cribb 1958:169, pl. 7 figs. 6-8 (Moreton Bay, Scarborough, Tannum,
Low Is.); 1961:55 (Thursday I.); 1965b:62 (Wilson I.); 1966:23
(Heron I.); 1978:69 (Hinchinbrook I.). Lucas 1931:55; 1934:350
(Low Is.). Morrissey 1980:105 (Magnetic I.). Ngan & Price 1979:17
(Townsville). Sonder 1880:30 (Cape Upstart). Womersley 1958:157
(Arnhem Land).

as var. *thyrsoides* Kuetzing
Bailey 1913:825. Sonder 1871:53 (Cape York, Torres St.); 1880:30.

Laurencia parvipapillata Tseng 1943b:204, pl. 4.

Cribb 1983:123, pl. 35 figs. 1-3, pl. 41 figs. 1-2.

Cribb 1965b:62 (Wilson I.); 1969:91 (North West I.);
1975:83 (Masthead I.).

Laurencia pedicularioides var. *queenslandica* Cribb 1958:161,

pl. 1 figs. 4, 5, pl. 13 fig. 3 (Moreton Bay, Noosa).

Laurencia perforata (Bory) Montagne 1840a:155

Cribb 1983:124, pl. 40 fig. 3.

Cribb 1958:164, pl. 3 figs. 1,2 (Noosa, Ball Bay);
1972:97 (Hoskyn I.); 1975:82 (Masthead I.); 1978:69
(Hinchinbrook I.); 1981:343. Morrissey 1980:108 (Magnetic I.).
Ngan & Price 1979:17 (Townsville).

Laurencia pinnatifida (Gmelin) Lamouroux 1813:42.

Kuetzing 1865:pl. 66 a-3.

Bailey 1913:825. Sonder 1871:53 (Torres St.);
1880:30 (Cape Upstart).

Laurencia poitii (Lamouroux) Howe 1905:593

Boergesen 1918:245, figs. 234, 235.

Cribb 1961:55 (Thursday I.).

Laurencia ptychodes Cribb 1983:124, pl. 40 figs. 1-2.
(Wilson I.).

Laurencia pygmaea Weber van Bosse 1913:122, pl. 12 fig. 6

Cribb 1983:125, pl. 41 fig. 3.

Cribb 1958:166, pl. 4 figs. 1-6 (Gold Coast, Pt. Lookout,
Caloundra, Noosa, Ball Bay); 1978:69 (Hinchinbrook I.).
Ngan & Price 1979:17 (Townsville).

Laurencia rigida J. Agardh 1876:651

Cribb 1958:171, pl. 8 figs. 1-5 (Moreton Bay,
Southport, Tannum, Ball Bay); 1978:69 (Hinchinbrook I.).

Bailey 1913:825. Lucas 1909:38; 1927:555 (Michaelmas Cay);
1934:350 (Low Is.). May 1951b:100 (Brampton I.). Sonder 1880:30.
Stephenson et al. 1974:120 (Moreton Bay).

as *L. botryoides* var. *minor* Harvey
Sonder 1871:53. (Gulf of Carpentaria).

Laurencia succisa Cribb 1958:163, pl. 1 figs. 1-3 (Noosa, Ball Bay).

Cribb 1983:126, pl. 35 fig. 4.

Cribb 1978:69 (Hinchinbrook I.). Ngan & Price 1979:17 (Townsville).

Laurencia tenera Tseng 1943b:200, pl. 1 fig. 6, pl. 2 figs. 5,6.

Saito 1969:150 fig. 4a.

Cribb 1958:167, pl. 5 figs. 1-10 (Gold Coast, Pt. Lookout, Caloundra, Noosa, Elliot Hds., Tannum); 1978:69 (Hinchinbrook I.). Ngan & Price 1979:17 (Townsville).

Laurencia thuyoides Kuetzing 1865:pl.74 a,b.

Bailey 1913:825. Sonder 1871:53 (Port Denison); 1880:30.

Laurencia venusta Yamada 1931:203, fig. h, pl. 6.

Cribb 1983:126, pl. 36 fig. 3.

Cribb 1958:168, pl. 5 fig. 11 (Caloundra, Elliot Hds., Ball Bay); 1978:69 (Hinchinbrook I.).

**Lenormandia spectabilis* Sonder 1845:54.

Harvey 1860a:pl. 171.

Bailey 1913:827. Lucas 1931:56 (Dunk I.). May 1965:397.

Lenormandiopsis lorentzii (Weber van Bosse) Papenfuss 1967:103.

Weber van Bosse 1923:371, pl. 9 figs. 1-5 (as *Aneuria lorentzii*)

as *Aneuria lorentzii* Weber van Bosse
Cribb 1961:54 (Thursday I.). May 1965:397.

Leveillea jungermannioides (Martens & Hering) Harvey 1855a:539

Cribb 1983:127, pl. 32 fig. 4.

Bailey 1913:827. Chapman 1977:162. Cribb 1961:54 (Thursday I.); 1978:69 (Hinchinbrook I.). Endean et al. 1956:111 (Cannonvale, Cape Edgecombe). Laing 1900:300 (Norfolk I.). Lewis et al. 1981:23 (Shoalwater Bay). Lucas 1909:44; 1927:555 (Michaelmas Cay); 1931:56; 1934:350 (Low Is.). May 1951b:51

(Brampton I.); 1965:401. Ngan & Price 1979:17 (Townsville).
Okamura 1904:90 (Torres St., NW Cape). Price et al. 1976:8
(Lizard I.). Reinbold 1900:151 (Norfolk I.). Womersley 1958:158
(Arnhem Land).

as *L. gracilis* Decaisne
Bailey 1983:788. Mueller 1881:105. Sonder 1871:49 (Cape York,
Port Denison).

as *L. schimperi* Decaisne
Bailey 1983:788. Dickie 1876:447 (Torres St.); Sonder 1880:31
(Cooktown).

Lophocladia harveyi (Kuetzing) Schmitz 1893:223

Kuetzing 1864:26, pl. 71e,f (as *Dasya harveyi*)

Levring 1946:226 (Moreton Bay). May 1965:383.
Saenger et al. 1979:401 (Gladstone).

Lophosiphonia cristata Falkenberg 1901:499, pl. 9 figs. 7-10
May 1965:380.

Lophosiphonia prostrata (Harvey) Falkenberg 1901:501

Cribb 1956:139, pl. 2 figs. 1-7 (Coolangatta,
Moreton Bay).

May 1965:380.

Lophosiphonia subadunca (Kuetzing) Falkenberg 1901:496, pl. 9
figs. 21-24.

Cribb 1956:139 (Elliot Hds.). May 1965:380.

Murrayella pericladus (C. Agardh) Schmitz 1893:227.

Kapraun & Bowden 1978:201, figs. 2-5.

Cribb 1978:69 (Hinchinbrook I.); 1979:69 (Moreton Bay).

Neurymenia fraxinifolia (Mertens ex Harvey) J. Agardh 1863:1134.

Trono 1972:139, fig. 20

Bailey 1913:827. Cotton 1913:254 (Dunk I.). Cribb 1961:54
(Thursday I.). Dickie 1876:447 (Torres St.). Lucas 1931:56. May
1965:399. Sonder 1871:49 (Cape York).

Polysiphonia amphibolis Womersley 1979:474, figs. 3f, g, 4a-c

?as *P. implexa* Hooker & Harvey
Lucas 1935:224 (Lord Howe I.). May 1951b:100 (Brampton I.).

as *P. gelidii* Zanardini 1874:490 (Lord Howe I.)
Lucas 1909:41; 1935:224 (Lord Howe I.)

Polysiphonia baxteri Lucas 1935:224 (Lord Howe I.).

Polysiphonia blandii Harvey 1862:pl.184.

Womersley 1979:486, fig. 7e-h.

as *P. ferulacea* Suhr ex J. Agardh
Bailey 1913:827. Cribb 1956:134 (Gold Coast, Caloundra, Noosa).

Polysiphonia coacta Tseng 1944:71, Pl. 2.

Dawson 1954a:456, figs. 60 g,h.

Ngan & Price 1979:17 (Townsville).

Polysiphonia exilis Harvey 1853:47

Cribb 1983:129, pl. 68 fig. 3.

Polysiphonia ferulacea Suhr ex J. Agardh 1863:980

Cribb 1983:129, pl. 71 figs. 2-4.

Cribb 1965b:62 (Wilson I.). Saenger 1979:54 (Swains Reef).

Polysiphonia fragilis Suringar 1870:37, pl.25b figs. 1-4.

Dawson 1954a:452, figs. 60 a,b.

Ngan & Price 1979:18 (Townsville).

Polysiphonia gracilis Tseng 1944:74, pl. 3 figs. 2,3.

Cribb 1956:135.

as *Lophosiphonia saccorhiza* Collins & Harvey
Cribb 1954:26, pl. 4 fig. 6 (Southport).

Polysiphonia hawaiiensis Hollenberg 1968a:66 figs. 2f, 16, 41

Cribb 1978:69 (Hinchinbrook I.).

Polysiphonia herpa Hollenberg 1968a:68

Cribb 1983:131, pl. 70 figs. 3-4.

Polysiphonia howei Hollenberg ex Taylor 1945:302, fig. 3.

Hollenberg 1968b:203, figs. 1 d, e, 2a

Cribb 1978:69 (Hinchinbrook I.).

as *Lophosiphonia obscura* (C. Agardh) Falkenberg

Endean et al. 1956:111 (Cannonvale). Sammarco 1983:10 (Britomart Reef).

as *L. reptabunda* (Suhr) Cribb 1956:140, pl. 4 figs. 6-8

(Noosa).

May 1965:380.

Polysiphonia infestans Harvey 1855a:539

Cribb 1983:131, pl. 69 figs. 1-2.

as *P. mollis* Hooker & Harvey

Askenasy 1894:13, pl. 3 fig. 13, pl. 4 figs. 20-22 (Moreton Bay). Bailey 1913:827. Borowitzka 1981:100 (One Tree I.). Cribb 1956:131, pl. 4 figs. 1-4, pl. 5 figs. 1-5 (Coolangatta to Gladstone); 1961:54 (Thursday I.); 1978:69 (Hinchinbrook I.); 1979:69 (Moreton Bay).

as *P. zostericola* Lucas

May 1951b:100 (Brampton I.)

**Polysiphonia isogona* Harvey 1855b:231

Womersley 1979:505, fig. 14

as *P. amoena* Sonder

Lucas 1931:55; Sonder 1871:51 (Cape York).

Polysiphonia macrocarpa Harvey 1836:206

Boergesen 1918:274, figs. 272-276.

Atherton & Dyne 1977:84 (Moreton Bay). Cribb 1956:136, pl. 3

figs. 1-8 (Southport, Moreton Bay, Noosa). Saenger et al.

1977:318 (S.E. Qld). Stephenson et al. 1974:120 (Moreton Bay).

Polysiphonia opaca (C. Agardh) Zanardini 1842:63

Boergesen 1930:104, figs. 42-44.

Cribb 1956:138 (Moreton Bay, Cannonvale).

Polysiphonia platycarpa Boergesen 1934:23 figs. 15-17

Cribb 1956:133 (Southport, Moreton Bay).

Polysiphonia purpureo-caerula Sonder ex Mueller
1881:105 (?nom. nud.)

Bailey 1913:827. Sonder 1880:35 (Cooktown).

Polysiphonia scopularum Harvey 1855a:540

Cribb 1983:132, pl. 70 figs. 1-2.

Lewis 1979:7 (Nth. Barnard Is.)

as *Lophosiphonia scopularum* (Harvey) Womersley
Borowitzka et al. 1978:370 (One Tree I.). Cribb 1956:138,
pl. 1 figs. 1-5, pl. 2 figs. 8-12 (Gold Coast to Tannum);
1965b:62 (Wilson I.); 1966:23 (Heron I.); 1975:80
(Masthead I.). May 1965:380.

var. *villum* (J. Agardh) Hollenberg 1968a:81, fig. 7a.
Cribb 1978:69 (Hinchinbrook I.); 1979:69 (Moreton Bay).

as *Lophosiphonia villum* J. Agardh
Sammarco 1983:8 (Britomart Reef).

Polysiphonia sertularioides (Grateloup) J. Agardh 1863:969.

Womersley 1979:478, fig. 5a-d.

?as *P. flaccidissima* Hollenberg
Saenger et al. 1980:159 (Gladstone).

?as *P. flaccidissima* var. *smithii* Hollenberg
Cribb 1956:134, pl. 4 fig. 5 (Moreton Bay, Gold Coast,
Mooloolabah). Lewis et al. 1981:23 (Shoalwater Bay).

Polysiphonia sphaerocarpa Boergesen 1918:271, figs. 267-271

Cribb 1983:134, pl. 71 fig. 1.

Womersley 1958:157 (Arnhem Land)

var. *distans* Hollenberg 1968a:90, fig. 5e
Lewis et al. 1981:23 (Shoalwater Bay).

Polysiphonia subtilissima Montagne 1840b:199.

Womersley 1979:469, figs. 2f-i.

Ngan & Price 1979:18 (Townsville). Sammarco 1983:10
(Britomart Reef).

Polysiphonia tongatensis Harvey in Kuetzing 1864:14 pl. 41.

Dawson 1954a:454, fig. 60d, e.

Sammarco 1983:8 (Britomart Reef).

Polysiphonia upolensis (Grunow) Hollenberg 1968a:94, figs. 6d, e, 29, 35, 42.

Cribb 1983:135, pl. 69 figs. 3-4.

Morrissey 1980:104 (Magnetic I.).

Polysiphonia variegata (C. Agardh) Zanardini 1842:162.

Boergesen 1918:269, figs. 264-266.

Atherton & Dyne 1977:84 (Moreton Bay). Cribb 1956:137 (Moreton
Bay, Pinalba); 1961:54 (Thursday I.). Saenger 1979:401
(Gladstone).

Tolypiocladia glomerulata (C. Agardh) Schmitz in Schmitz & Hauptfleisch
1897:441.

Cribb 1983:135, pl. 68 fig. 4.

Bailey 1913:827. Cribb 1961:54 (Thursday I.);
1965b:62 (Wilson I.); 1966:22 (Heron I.); 1975:81 (Masthead I.);
1978:68 (Hinchinbrook I.). Lewis 1979:7 (Nth. Barnard Is.).
Lewis et al. 1981:23 (Shoalwater Bay). Lucas 1931:55 (Bowen).
May 1965:383. Morrissey 1980:105 (Magnetic I.).
Ngan & Price 1979:18 (Townsville). Price et al. 1976:8
(Lizard I.). Womersley 1958:157 (Arnhem Land).

as *Polysiphonia glomerulata* Endlicher
Bailey 1883:827. Sonder 1871:51 (Cape York, Gulf of Carpentaria);
1880:35.

as *Roschera glomerulata* (C. Agardh) Weber van Bosse
May 1951b:100 (Brampton I.).

Symphiocladia marchantioides (Harvey) Falkenberg 1897:443

Falkenberg 1901:277, pl.2 figs. 18-23, pl.4 figs 20-24.

Bailey 1913:827. Lucas 1909:43. May 1965:403.

Veleroa elongata Saenger 1982:65, fig. 1, pl. 2 (Gladstone).

Vidalia fimbriata (R. Brown) J. Agardh 1863:1124.

Boergesen 1945:44, fig. 20

Bailey 1913:827. Cotton 1913:254 (Dunk I.). Cribb 1961:54 (Thursday I.); 1978:69 (Hinchinbrook I.). Lucas 1909:46; 1931:56 (Dunk I.). May 1965:398. Okamura 1904:91 (Torres St.). Ngan & Price 1979:18 (Townsville). Sonder 1871:49 (Cape York); 1880:32 (Keppel Bay).

**Vidalia spiralis* Lamouroux 1824:387.

Kuetzing 1863:pl. 100 a-c (as *Epineuron spirale*)

Bailey 1913:827. Lucas 1931:56 (Dunk I.). May 1965:398.

Sub-class Bangiophycidae

ORDER BANGIALES

Family Bangiaceae

Bangia atropurpurea (Roth) C. Agardh 1824:76

Cribb 1983:11, pl. 4 figs. 3-5.

Bangia simplex Lucas 1935:215 (Lord Howe I.)

May 1965:354.

Porphyra denticulata Levring 1953:467 figs. 5, 6 a-g
(Noosa, Caloundra)

Cribb 1978:69 (Hinchinbrook I.). May 1965:354.

?*P.columbina* Montagne, see Womersley & Conway 1975:63.

Family Erythropeltidaceae

Erythrotrichia carnea (Dillwyn) J. Agardh 1883:15, pl. 1, figs 8-10.

Cribb 1983:10, pl. 1 figs. 4-6.

Cribb 1966:22 (Heron I.). Levring 1953:462
(Moreton Bay). May 1965:354.

ORDER PORPHYRIDIALES

Family Goniotrichaceae

Chroodactylon ornata (C. Agardh) Basson 1979:67, pl. 9 fig. 52.

Cribb 1983:9, pl. 1 figs. 7-8.

as *Asterocystis ornata* (C. Agardh) Hamel
Borowitzka et al. 1978:370 (One Tree I.). Cribb
1961:52 (Thursday I.); 1966:22 (Heron I.); 1978:68
(Hinchinbrook I.). Levring 1953:460 (Moreton Bay).
May 1965:354.

Goniotrichum alsidii (Zanardini) Howe 1914:75

Cribb 1983:9, pl. 1 figs. 1-3.

Cribb 1966:22 (Heron I.). Levring 1946:219 (Moreton Bay).

as *G. elegans* (Chauvin) Le Jolis
Levring 1953:461 (Port Douglas, Moreton Bay, Heron I.).

as *Stylonema elegans* (Chauvin) May
May 1965:354.

Goniotrichum cornucervi (Reinsch) Hauck 1885:519

Abbott & Hollenberg 1976:280, fig. 223.

Levring 1953:461 (Port Douglas).

as *Stylonema cornucervi* Reinsch
May 1965:354.

5. REFERENCES

- Abbott, I.A. (1945). "The genus *Liagora* in Hawaii". *Occ. Pap. Bernice P. Bishop Mus.*, 18, 145-169.
- Abbott, I.A. (1962). "Morphological studies on a new species of *Acrosymphyton* (Rhodophyceae)". *Am. J. Bot.*, 49, 845-849.
- Abbott, I.A. (1970). "*Yamadaella*, a new genus in the Nemaliales (Rhodophyta)". *Phycologia*, 9, 115-123.
- Abbott, I.A. (1979). "Some tropical species related to *Antithamnion* (Rhodophyta, Ceramiaceae)". *Phycologia*, 18, 213-227.
- Abbott, I.A. and Hollenberg, G.J. (1976). *Marine algae of California*, California, Stanford University Press, 827 pp.
- Adey, W.H. (1970). "A revision of the Foslie crustose coralline herbarium." *Det. Kongl. Norske Vidensk. Selsk. Skr.*, 1, 1-46.
- Adey, W.H. and Adey, P.J. (1973). "Studies on the biosystematics and ecology of the epilithic crustose Corallinaceae of the British Isles." *Br. phycol. J.*, 8, 343-407.
- Adey, W.H., Townsend, R.A. and Boykins, W.T. (1982). "The crustose coralline algae (Rhodophyta : Corallinaceae) of the Hawaiian Islands." *Smithson. Contrib. mar. Sci.*, 15, 1-74.
- Agardh, C.A. (1817). *Synopsis algarum Scandinaviae ...*, Lund, 135 pp.
- Agardh, C.A. (1822). *Species algarum*, Vol. 1, Pt. 2, Lund, pp. 169-531.
- Agardh, C.A. (1824). *Systema algarum*, Lund, 312 pp.
- Agardh, C.A. (1828). *Species algarum*, Vol. 2, Pt. 1, Greifswald, pp. 1-189.
- Agardh, J.G. (1841). "In historiam algarum symbolae." *Linnaea*, 15, 1-50, 443-457.
- Agardh, J.G. (1847). "Nya alger från Mexico." *Öfvers K. Vetensk.-Akad. Forh.*, 4, 5-17.
- Agardh, J.G. (1851). *Species genera et ordines algarum ...*, Vol. 2 (2:1), Lund, pp. 1-504.
- Agardh, J.G. (1852a). *Species genera et ordines algarum*, Vol. 2 (2:2), Lund, pp. 505-700.
- Agardh, J.G. (1852b). *Species genera et ordines algarum ...*, Vol. 2 (3:1), Lund, pp. 701-786.
- Agardh, J.G. (1863). *Species genera et ordines algarum ...*, Vol. 2 (3:2), Lund, pp. 787-1291.

- Agardh, J.G. (1872). "Till algernes systematik. Nya bidrag." *Acta Univ. lund.*, 9 (8), 1-71.
- Agardh, J.G. (1876). *Species genera et ordines algarum...*, Vol. 3 (1), *Epicrasis systematis floridearum*, Lund, 724 pp.
- Agardh, J.G. (1877). "De algis novae zelandiae marinis." *Acta Univ. lund.*, 14 (4), 1-32.
- Agardh, J.G. (1883). "Till algernes systematik. Nya bidrag." *Acta Univ. lund.*, 19 (2), 1-182.
- Agardh, J.G. (1885). "Till algernes systematik. Nya bidrag. VII. Florideae." *Acta Univ. lund.*, 21, 1-120, pl. 1.
- Agardh, J.G. (1892). "Analecta algologica." *Acta Univ. lund.*, 28, 1-182, pls. 1-3.
- Agardh, J.G. (1898). *Species genera et ordines algarum ...*, Vol. 3(3), Lund, 239 pp.
- Ardissone, F. (1871). "Revista dei Ceramii della flora Italiana." *Nuovo G. bot. ital.*, 3, 32-50.
- Askenasy, E. (1894). "Uber einige australische Meeresalgen." *Flora, Jena*, 78, 1-18, pls. 1-4.
- Atherton, G. and Dyne, G. (1977). "Survey of the algal flora of the Serpentine Creek area." In *Brisbane Airport Development Project Environmental Study. Volume IV. Marine Study Factor Reports*, Canberra, AGPS, 83-109.
- Bailey, F.M. (1883). *A synopsis of the flora of Queensland*, Brisbane, Govt. Printer, 890 pp.
- Bailey, F.M. (1895). "Contributions to the Queensland flora." *Botanical Bulletin No. 11*, Department of Agriculture, Brisbane.
- Bailey, F.M. (1913). *Comprehensive catalogue of Queensland plants*, Brisbane, Govt. Printer, 879 pp.
- Balakrishnan, M.S. (1962). "Studies on Indian Cryptonemiales. III. *Corynomorpha* J. Ag." *Phytomorphology*, 12, 77-86.
- Baldock, R.N. (1976). "The Griffithsiaeae group of the Ceramiaceae (Rhodophyta) and its southern Australian representatives." *Aust. J. Bot.*, 24, 509-593.
- Basson, P.W. (1979). "Marine algae of the Arabian Gulf coast of Saudi Arabia. II." *Botanica mar.*, 22, 65-82.
- Belanger, C., Bory de Saint Vincent, J.B. and Montagne, J.F.C. (1834). *Voyage aux Indes Orientales ... Botanique*, 2(2), *Cryptogamie*, Paris, 81-92, pls. 9-16.

- Boergesen, F. (1909). "Some new or little known West Indian Florideae." *Bot. Tidsskr.*, 30, 1-19, pls. 1-2.
- Boergesen, F. (1910). "Some new or little known West Indian Florideae. II." *Bot. Tidsskr.*, 30, 177-207.
- Boergesen, F. (1917). "The marine algae of the Danish West Indies. Part II. Rhodophyceae (3)." *Dansk. bot. Ark.*, 3, 145-240.
- Boergesen, F. (1918). "The marine algae of the Danish West Indies. Part II. Rhodophyceae (4)." *Dansk. bot. Ark.*, 3, 241-304.
- Boergesen, F. (1919). "The marine algae of the Danish West Indies. Part II. Rhodophyceae (5)." *Dansk. bot. Ark.*, 3, 305-368.
- Boergesen, F. (1920). "The marine algae of the Danish West Indies. Part II. Rhodophyceae (6)." *Dansk. bot. Ark.*, 3, 369-498.
- Boergesen, F. (1924). "Marine algae from Easter Island." In *The natural history of Juan Fernandez and Easter Island* (C. Skottsberg), Vol. 2(9), Uppsala, Almqvist & Wiksells, 247-309.
- Boergesen, F. (1931). "Some Indian Rhodophyceae, especially from the shores of the Presidency of Bombay." *Bull. misc. Inf. R. bot. Gdns. Kew*, 1931, 1-24, pls. 1-2.
- Boergesen, F. (1932a). "Some Indian Rhodophyceae, especially from the shores of the Presidency of Bombay. II." *Bull. misc. Inf. R. bot. Gdns. Kew*, 1932, 113-134.
- Boergesen, F. (1932b). "A revision of Forsskals algae mentioned in *Flora Aegyptico-Arabica* and found in his herbarium in the Botanical Museum of the University of Copenhagen." *Dansk. bot. Ark.*, 8, 1-15, pl. 1.
- Boergesen, F. (1933). "Some Indian Rhodophyceae, especially from the shores of the Presidency of Bombay. III." *Bull. misc. Inf. R. bot. Gdns. Kew*, 1933, 113-142, pls. 5-9.
- Boergesen, F. (1934). "Some Indian Rhodophyceae, especially from the shores of the Presidency of Bombay. IV." *Bull. misc. Inf. R. bot. Gdns. Kew*, 1934, 1-30, pls. 1-4.
- Boergesen, F. (1937). "Contributions to a South Indian marine algal flora. II." *J. Indian bot. Soc.*, 16, 311-357.
- Boergesen, F. (1939). "Marine algae from the Iranian Gulf especially from the innermost part near Bushir and the Island Kharg." In *Danish scientific investigations in Iran* (K. Jessen & R. Sparck, eds), Pt. 1, Copenhagen, Einar Munksgaard, 47-141.
- Boergesen, F. (1942). "Some marine algae from Mauritius. III. Rhodophyceae. Part 1. Porphyridiales, Bangiales, Nemalionales." *Biol. Meddr.*, 17(5), 1-64, pls. 1-2.

- Boergesen, F. (1945). "Some marine algae from Mauritius. III. Rhodophyceae. Pt. 4. Ceramiales." *Biol. Meddr.*, 19(10), 1-68.
- Boergesen, F. (1954). "Some marine algae from Mauritius. Additions to the parts previously published. VI." *Biol. Meddr.*, 22(4), 1-51.
- Bornet, E. and Thuret, G. (1876). *Notes algologiques ...*, Pt. 1, Paris, 70 pp., 25 pls.
- Borowitzka, M.A. (1981). "Algae and grazing in coral reef ecosystems." *Endeavour, n.s.*, 5, 99-106.
- Borowitzka, M.A., Larkum, A.W.D. and Borowitzka, L.J. (1978). "A preliminary study of algal turf communities of a shallow coral reef lagoon using an artificial substratum." *Aquat. Bot.*, 5, 365-382.
- Bory de Saint Vincent, J.B. (1825). *Dictionnaire classique d'histoire naturelle*, Vol. 7, Paris, Rey et Gravier, 626 pp.
- Bory de Saint Vincent, J.B. (1828). "Histoire naturelle botanique. Cryptogamie." In *Voyage autour du monde ... sur la corvette ... "La Coquille"* (L.I. Duperrey), Paris, A. Bertrand, 97-136.
- Bory de Saint Vincent, J.B. (1829). "Histoire naturelle botanique. Cryptogamie." In *Voyage autour du monde ... sur la corvette ... "La Coquille"* (L.I. Duperrey), Paris, A. Bertrand, 137-300.
- Butters, F.K. (1911). "Notes on species of *Liagora* and *Galaxaura* of the central Pacific." *Minn. bot. Stud.*, 4, 161-184, pl. 24.
- Chapman, V.J. (1977). "Marine algae of Norfolk Island and Cook Island." *Botanica mar.*, 20, 161-166.
- Chiang, Y.M. (1970). "Morphological studies of red algae of the family Cryptonemiaceae." *Univ. Calif. Publ. Bot.*, 58, 1-83.
- Chou, R. C.-Y. (1945). "Pacific species of *Galaxaura*. I. Asexual types." *Pap. Mich. Acad. Sci.*, 30, 35-55, pls. 1-11.
- Collins, F.C. and Hervey, A.B. (1917). "The algae of Bermuda." *Proc. Am. Acad. Arts Sci.*, 53, 1-195.
- Cotton, A.D. (1913). "Notes on Queensland Florideae." *Bull. misc. Inf. R. bot. Gdns. Kew*, 1913, 252-255.
- Cribb, A.B. (1954). "Records of marine algae from south-eastern Queensland. I." *Pap. Dep. Bot. Univ. Qd.*, 3, 15-37.
- Cribb, A.B. (1956). "Records of marine algae from south-eastern Queensland. II. *Polysiphonia* and *Lophosiphonia*." *Pap. Dep. Bot. Univ. Qd.*, 3, 131-147.
- Cribb, A.B. (1958). "Records of marine algae from south-eastern Queensland. III. *Laurencia Lamx.*" *Pap. Dep. Bot. Univ. Qd.*, 3: 159-191.

- Cribb, A.B. (1961). "Some marine algae from Thursday Island and surrounding areas." *Pap. Dep. Bot. Univ. Qd.*, 4, 3-31.
- Cribb, A.B. (1965a). "An ecological and taxonomic account of the algae of a semi-marine cavern, Paradise Cove, Queensland." *Pap. Dep. Bot. Univ. Qd.*, 4, : 259-282.
- Cribb, A.B. (1965b). "Marine and terrestrial vegetation of Wilson Island, Great Barrier Reef." *Proc. R. Soc. Qd.*, 77, 53-62.
- Cribb, A.B. (1966). "The algae of Heron Island, Great Barrier Reef, Australia." *Pap. Univ. Qd. Gt. Barrier Reef Comm. Heron Isl. Res. Stn.*, 1, 3-23.
- Cribb, A.B. (1969). "The vegetation of North West Island". *Qd. Nat.*, 19, 85-93.
- Cribb, A.B. (1972). "Vegetation of Hoskyn I. and reef." *Qd. Nat.*, 20, 92-100.
- Cribb, A.B. (1975). "Algal vegetation of Masthead Island reef." *Qd. Nat.*, 23, 79-83.
- Cribb, A.B. (1978). "List of marine algae from Hinchinbrook Island." *Qd. Nat.*, 22, 67-69.
- Cribb, A.B. (1979). "Algae associated with mangroves in Moreton Bay, Queensland." In *Northern Moreton Bay Symposium* (A. Bailey and N.C. Stevens, eds.), St. Lucia, Royal Society of Queensland, 63-69.
- Cribb, A.B. (1981). "Coral reefs." In *Marine botany : an Australasian perspective* (M.N. Clayton and R.J. King, eds.), Melbourne, Longman Cheshire, 329-345.
- Cribb, A.B. (1983). *Marine algae of the southern Great Barrier Reef. Part 1. Rhodophyta*, Brisbane, Australian Coral Reef Society, 175 pp., 71 pls.
- Crouan, P.L. and Crouan, H.M. (1859). "Notice sur quelques especes et genres nouveaux d'algues marines de la rade de Brest." *Annls. Sci. nat.*, Ser. 4, 12, 288-292, pl. 22.
- Crouan, P.L. and Crouan, H.M. (1867). *Florule du Finistère*, Paris, 262 pp., 32 pls.
- Dawson, E.Y. (1944). "The marine algae of the Gulf of California." *Allan Hancock Pacif. Exped.*, 3, 189-413.
- Dawson, E.Y. (1949). "Studies of north east Pacific Gracilariaceae." *Occ. Pap. Allan Hancock Fdn*, 9, 1-105, 25 pls.
- Dawson, E.Y. (1950). "A review of *Ceramium* along the Pacific coast of North America with special reference to its Mexican representatives." *Farlowia*, 4, 113-138.

- Dawson, E.Y. (1953). "Marine red algae of Pacific Mexico. Part I. Bangiales to Corallinaceae Subf. Corallinoideae." *Allan Hancock Pacif. Exped.*, 17, 1-239.
- Dawson, E.Y. (1954a). "Marine plants in the vicinity of the Institut Oceanographique de Nha Trang, Viet Nam." *Pacif. Sci.*, 8, 373-469.
- Dawson, E.Y. (1954b). "Notes on tropical Pacific marine algae." *Bull. St. Calif. Acad. Sci.*, 53, 1-7.
- Dawson, E.Y. (1956). "Some marine algae of the southern Marshall Islands." *Pacif. Sci.*, 10, 25-66.
- Dawson, E.Y. (1957). "An annotated list of marine algae from Eniwetok Atoll, Marshall Islands." *Pacif. Sci.*, 11, 92-132.
- Dawson, E.Y. (1963). "Marine algae of Pacific Mexico. Pt. 8. Ceramiales; Dasycyaceae, Rhodomelaceae." *Nova Hedwigia*, 6, 401-481, pls. 126-178.
- Decaisne, M.J. (1842). "Mémoire sur les corallines ou polypiers calcifères." *Annls Sci. nat. (Bot.)*, Sér 2, 18, 96-128.
- Denizot, M. (1968). *Les algues floridées encrustantes (a l'exclusion des Corallinaceae)*, Paris, Museum National de Histoire Naturelle, 310 pp.
- De Toni, J.B. (1895). *Phyceae japonicae novae ...*, Venezia, Carlo Ferrari, 78 pp., 2 pls.
- De Toni, J.B. (1900). *Sylloge algarum omnium hucusque cognitarum*, Vol. 4, *Florideae* Pt. 2, Padua, pp. 389-776.
- De Toni, J.B. (1905). *Sylloge algarum omnium hucusque cognitarum*, Vol. 4, *Florideae*, Pt. 4, Padua, pp. 1522-1973.
- De Toni, J.B. and Levi, D. (1888). *Relazione sur riordinamento dell algarium Zanardini alla giunta municipale de Venezia*, Venice, 144 pp.
- Dickie, G. (1876). "Notes on algae collected by H.N. Mosely, M.A., of H.M.S. *Challenger*, chiefly obtained in Torres Straits, coasts of Japan and Juan Fernandez." *J. Linn. Soc. (Bot.)*, 15, 446-455.
- Dickie, G. (1877). "Supplemental notes on algae collected by H.N. Mosely, M.A., of H.M.S. *Challenger*, from various localities." *J. Linn. Soc. (Bot.)*, 15, 486-489.
- Dixon, P.S. (1967). "The typification of *Fucus cartilagineus* L. and *F. corneus* Huds." *Blumea*, 15, 55-62.
- Ducker, S.C. (1979). "The genus *Metagoniolithon* Weber van Bosse (Corallinacea, Rhodophyta)." *Aust. J. Bot.*, 27, 67-101.
- Ellis, J. and Solander, D. (1786). *The natural history of many curious and uncommon zoophytes, collected from various parts of the globe by the late John Ellis ... systematically arranged and described by the late Daniel Solander ...*, London, xii + 208 pp., 63 pls.

- Endean, R., Kenny, R. and Stephenson, W. (1956). "The ecology and distribution of intertidal organisms on the rocky shores of the Queensland mainland." *Aust. J. mar. Freshwat. Res.*, 7, 88-146.
- Falkenberg, P. (1897). "Rhodomelaceae." In *Die natuerlichen Pflanzenfamilien* (A. Engler and K. Prantl, eds.), Leipzig, Vol. 1, Pt. 2, 580 pp.
- Falkenberg, P. (1901). "Die Rhodomelaceen des Golfes von Neapel und der angrenzenden Meeres-Abschnitte." *Fauna Flora Golf. Neapel.*, 26, 7-754, 74 pls.
- Feldmann, J. (1931). "Remarques sur les genres *Gelidium* Lamour., *Gelidiopsis* Schmitz et *Echinocaulon* (Kuetz.) emend. In *Trave. cryptogamiques ded. L. Mangin*, Paris, 151-166.
- Feldmann, J. and Hamel, G. (1934). "Observations sur quelques Gelidiacees." *Revue gén. Bot.*, 46, 528-548.
- Feldmann, J. and Hamel, G. (1936). "Floridees de France. VII. Gelidiales." *Revue algol.*, 9, 85-140, pls. 2-6.
- Feldmann-Mazoyer, G. (1940). *Recherches sur le Céramiacées de la Méditerranée occidentale*, Algiers, Imprimerie Minerva, 510 pp., 4 pls.
- Foslie, M.H. (1897). "On some *Lithothamnia*." *K. norske vidensk. Selsk. Skr.*, 1897(1), 1-20.
- Foslie, M.H. (1900). "Revised systematical survey of the Melobesieae." *K. norske vidensk. Selsk. Skr.*, 1900 (5), 1-22.
- Foslie, M.H. (1904). "The Corallinaceae of the Siboga Expedition. I. Lithothamnionaceae, Melobesieae, Mastophoreae." *Siboga Exped.*, 61, 10-77, pls. 1-13.
- Foslie, M.H. (1909). "Algologiske notiser. VI." *K. norske vidensk. Selsk. Skr.*, 1909(2), 1-63.
- Gaillon, B. (1828). "Résumé méthodique des classifications des Thalassiophytes." *Dict. sci. nat.*, 53, 350-406.
- Garbary, D.J. and Johansen, H.W. (1982). "Scanning electron microscopy of *Corallina* and *Haliptilon* (Corallinaceae, Rhodophyta): surface features and their taxonomic implications." *J. Phycol.*, 18, 211-219.
- Gordon, E.M. (1972). "Comparative morphology and taxonomy of the Wrangelieae, Sphondylothamnieae and Spermothamnieae (Ceramiaceae, Rhodophyta)." *Aust. J. Bot.*, Suppl. 4, 1-180.
- Greville, R.K. (1830). *Algae Britannicae ...*, Edinburgh, 218 pp. 19 pls.
- Grunow, A. (1874). "Algen der Fidschi-, Tonga- und Samoa-Inseln." *J. Mus. Godeffroy*, 3, 23-50.

- Grunow, A. (1889). "Algae". In *Die Flora von Kaiser Wilhelms Land. Beiheft zu den Nachrichten über Kaiser Wilhelms Land und Bismarck Archipel.* (K. Schumann and M. Hollrung), Berlin, Asher & Co., 1-5.
- Harvey, W.H. (1833). "Algae". In *The British Flora* Vol. 2, Pt. 1 (W.J. Hooker), 248-401.
- Harvey, W.H. (1836). "Algae". In *Flora Hibernica ...* (J.T. Mackay), Dublin, Pt. 3, 154-254.
- Harvey, W.H. (1844). "Algae of Tasmania." *Lond. J. Bot.*, 3, 428-454.
- Harvey, W.H. (1847). *Nereis Australis or algae of the southern ocean*, London, Reeve, 124 pp.
- Harvey, W.H. (1851). *Phycologia Britannica*, Vol. 4, London, Reeve Bros. pls. 241-360.
- Harvey, W.H. (1853). "Nereis Boreali-Americana. II. Rhodospermae." *Smithson, Contr. Knowl.*, 5(5), 1-258, 24 pls.
- Harvey, W.H. (1854). "Short characters of three new algae from the shores of Ceylon." *Hooker's J. Bot.*, 6, 143-145, pls. 5-6.
- Harvey, W.H. (1855a). "Some account of the marine botany of the colony of Western Australia." *Trans. R. Ir. Acad.*, 22, 525-566.
- Harvey, W.H. (1855b). "Algae". In *The botany of the Antarctic voyage of H.M. Discovery Ships "Erebus" and "Terror"...*, Vol. 2, *Flora Novae Zelandiae, 1853-1855* (J.D. Hooker), London, Reeve, 211-266, pls. 107-121.
- Harvey, W.H. (1858). *Phycologia Australica*, Vol. 1, London, Reeve, pls. 1-60.
- Harvey, W.H. (1859). *Phycologia Australica*, Vol. 2, London, Reeve, pls. 61-127.
- Harvey, W.H. (1860a). *Phycologia Australica*, Vol. 3, London, Reeve, pls. 121-180.
- Harvey, W.H. (1860b). "Algae". In *The botany of the Antarctic voyage of H.M. Discovery Ships "Erebus" and "Terror"...*, Vol. 3, *Flora Tasmaniae, 1855-1860* (J.D. Hooker), London, Reeve, 282-343, pls. 185-196.
- Harvey, W.H. (1862). *Phycologia Australica*, Vol. 4, London, Reeve, pls. 181-240.
- Harvey, W.H. (1863). *Phycologia Australica*, Vol. 5, London, Reeve, pls. 241-300, synop. i-lxiii.
- Hauck, F. (1885). "Die Meeresalgen Deutschlands und Österreichs." In *Kryptogamen-Flora von Deutschland, Österreich und der Schweiz*, Vol. 2 (L. Rabenhorst), Leipzig, 575 pp. 5 pls.
- Hauck, F. (1888). "Meeresalgen von Puerto Rico." *Bot. Jb.*, 9, 457-470.

- Hering, D. (1841). "Diagnoses algarum novarum a cl. Dre. Ferdinand Krauss in Africa australi lectarum." *Ann. Mag. nat. Hist.*, 8, 90-92.
- Heydrich, F. (1892). "Beiträge zur Kenntniss der Algenflora Kaiser-Wilhelms-Land (Deutsch-New-Guinea)." *Ber. dt. bot. Ges.*, 10, 458-486, pls. 24-26.
- Heydrich, F. (1897). "Neue Kalkalgen von Deutsch-Neu-Guinea." *Bibliothca bot.*, 7(41), 1-11, pl. 1.
- Hollenberg, G.J. (1968a). "An account of the species of *Polysiphonia* of the central and western tropical Pacific Ocean. I. *Oligosiphonia*." *Pacif. Sci.*, 22, 56-98.
- Hollenberg, G.J. (1968b). "An account of the species of *Polysiphonia* of the central and western tropical Pacific Ocean. II. *Polysiphonia*." *Pacif. Sci.*, 22, 198-207.
- Hollenberg, G.J. (1968c). "An account of the species of the red alga *Herposiphonia* occurring in the central and western tropical Pacific Ocean." *Pacif. Sci.*, 22, 536-559.
- Hooker, W.J. (1833). *The English Flora of Sir James Edward Smith. Class XXIV. Cryptogamia*, Vol. 5(1), London, 432 pp.
- Hooker, J.D. and Harvey, W.H. (1847). "Algae Tasmanicae." *Lond. J. Bot.*, 6, 397-417.
- Howe, M.A. (1905). "Phycological studies. II. New Chlorophyceae, new Rhodophyceae and miscellaneous notes." *Bull. Torrey bot. Club*, 32, 563-586.
- Howe, M.A. (1914). "The marine algae of Peru." *Mem. Torrey bot. Club*, 15, 1-185.
- Howe, M.A. (1918). "Calcareous algae from Murray Island, Australia, and Cocos-Keeling Islands." *Publs Carnegie Instn.*, 213, 291-296.
- Howe, M.A. (1920). "Algae". In *The Bahama flora* (N.L. Britton and C.F. Millspaugh, eds.), New York, 553-618.
- Huisman, J.M. and Kraft, G.T. (1982). "*Deucalion* gen. nov. and *Anisoschizus* gen. nov. (Ceramiaceae, Ceramiales), two new propagule-forming red algae from southern Australia." *J. Phycol.*, 18, 177-192.
- Huisman, J.M. and Kraft, G.T. (1983). "*Gymnophycus*, a new genus of Ceramiaceae (Rhodophyta) from eastern Australia." *Phycologia*, 22, 285-294.
- Huisman, J.M. and Kraft, G.T. (1984). "The genus *Balliella* Itono & Tanaka (Rhodophyta: Ceramiaceae) from eastern Australia." *J. Phycol.*, 20, (in press).

- Huvé, P. and Huvé, H. (1977). "Le genre *Halichrysis* (J. Agardh 1851 emend J. Agardh 1876) Schousboe mscr. in Bornet 1892 (Rhodymeniales, Rhodymeniacees)." *Bull. Soc. phycol. Fr.*, 22, 99-107.
- Itono, H. (1977a). "Studies on the southern Japanese species of *Galaxaura* (Rhodophyta)." *Micronesica*, 13, 1-26.
- Itono, H. (1977b). *Studies on the Ceramiaceous algae (Rhodophyta) from southern parts of Japan*, Bibliotheca Phycologia 35, Vaduz, J. Kramer, 488 pp.
- Jao, C-C. (1940). "Studies on the freshwater algae of China IV. Subaerial and aquatic algae from Nanyoh, Hunan. Part II." *Sinensia*, 11, 241-361.
- Johansen, H.W. (1969). "Morphology and systematics of coralline algae with special reference to *Calliarthron*." *Univ. Calif. Publs Bot.*, 49, 1-98.
- Johansen, H.W. (1970). "The diagnostic value of reproductive organs in some genera of articulated coralline red algae." *Br. phycol. J.*, 5, 79-86.
- Johansen, H.W. (1971). "Changes and additions to the articulated coralline flora of California." *Phycologia*, 10, 241-249.
- Johansen, H.W. and Silva, P.C. (1978). "Janieae and Lithotricheae : two new tribes of articulated Corallinaceae (Rhodophyta)." *Phycologia*, 17, 413-417.
- Johnston, T.H. (1917). "Ecological notes on the littoral fauna and flora of Caloundra, Queensland." *Qd. Nat.*, 2, 53-63.
- Kapraun, D.F. and Bowden, W.A. (1978). "Additions to the benthic marine algal flora of Fiji." *Micronesica*, 14, 199-207.
- Kjellman, F.R. (1883). "The algae of the Arctic Sea." *K. svenska Vetensk. - Akad. Handl.* 20(5), 1-350, 31 pls.
- Kjellman, F.R. (1900). "Om floride-slagtet *Galaxaura*, dess Organografi och Systematik." *K. svenska Vetensk.-Akad. Handl.*, 33(1), 1-110, 20 pls.
- Kraft, G.T. (1973). "The morphology of *Cubiculosporum koronicarpus* gen et sp. nov., representing a new family in the Gigartinales (Rhodophyta)." *Am. J. Bot.*, 60, 872-882.
- Kraft, G.T. (1977). "Studies of marine algae in the lesser-known families of the Gigartinales (Rhodophyta). II. Dicranemaceae." *Aust. J. Bot.*, 25, 219-267.
- Kraft, G.T. (1978). "Studies of marine algae in the lesser-known families of the Gigartinales (Rhodophyta). III. The Mychodeaceae and Mychodeophyllaceae." *Aust. J. Bot.*, 26, 515-610.
- Kraft, G.T. (1984a). "The red algal genus *Predaea* (Nemastomataceae, Gigartinales) in Australia." *Phycologia*, 23, (in press).

- Kraft, G.T. (1984b). "Taxonomic and morphological studies of tropical and subtropical species of *Callophycus* (Solieriaceae, Rhodophyta)." *Phycologia*, 23, (in press).
- Kraft, G.T. and Abbott, I.A. (1971). "*Predaea weldii*, a new species of Rhodophyta from Hawaii, with an evaluation of the genus." *J. Phycol.*, 7, 194-202.
- Kraft, G.T. and Huisman, J.M. (1981). "New record of the marine alga *Cubiculosporum* (Gigartinales) from the southern Great Barrier Reef." *J. Phycol.*, 17, 278-280.
- Kraft, G.T. and Min-Thein, U. (1983). "*Clavicolonium* and *Antrocentrum*, two new genera of Acrotylaceae (Gigartinales, Rhodophyta) from southern Australia." *Phycologia*, 22, 171-183.
- Kuetzing, F.T. (1849). *Species algarum*, Leipzig, 922 pp.
- Kuetzing, F.T. (1858). *Tabulae phycologicae*, Vol. 8, Nordhausen, Kohne, 48 pp., 100 pls.
- Kuetzing, F.T. (1862). *Tabulae phycologicae*, Vol. 12, Nordhausen, Kohne, 30 pp., 100 pls.
- Kuetzing, F.T. (1863). *Tabulae phycologicae*, Vol. 13, Nordhausen, Kohne, 31 pp., 100 pls.
- Kuetzing, F.T. (1864). *Tabulae phycologicae*, Vol. 14, Nordhausen, Kohne, 35 pp., 100 pls.
- Kuetzing, F.T. (1865). *Tabulae phycologicae*, Vol. 15, Nordhausen, Kohne, 36 pp., 100 pls.
- Kuetzing, F.T. (1866). *Tabulae phycologicae*, Vol. 16, Nordhausen, Kohne, 35 pp., 100 pls.
- Kuetzing, F.T. (1868). *Tabulae phycologicae*, Vol. 18, Nordhausen, Kohne, 35 pp., 100 pls.
- Kuetzing, F.T. (1869). *Tabulae phycologicae*, Vol. 19, Nordhausen, Kohne, 36 pp., 100 pls.
- Kylin, H. (1924). "Studien über die Delesseriaceen." *Acta Univ. lund.*, 20(6), 1-111.
- Kylin, H. (1931). "Die Florideenordnung Rhodymeniales." *Acta Univ. lund.*, 27(11), 1-48, 20 pls.
- Kylin, H. (1932). "Die Florideenordnung Gigartinales." *Acta Univ. lund.*, 28(8), 1-88, 28 pls.
- Kylin, H. (1956). *Die Gattungen der Rhodophyceen*, Lund, Gleerups Forlag, 673 pp.

- Laing, R.M. (1900). "A list of the seaweeds of Norfolk Island." *Trans. N.Z. Inst.*, 33, 299-301.
- Lamouroux, J.V.F. (1813). "Essai sur les genres de la famille des thalassiophyta non articulées." *Annls Mus. natn. Hist. nat.*, 20, 21-47, 115-139, 267-293, 7 pls.
- Lamouroux, J.V.F. (1816). *Histoire des polypiers coralligènes flexibles, vulgairement nommés zoophytes*, Caen, lxxxiv + 560 pp., 19 pls.
- Lamouroux, J.V.F. (1821). *Exposition méthodique des genres de l'ordre des Polypiers*, Paris, 115 pp., 84 pls.
- Lamouroux, J.V.F. (1824). "Des polypes a polypiers." In *Voyage autour du monde ... sur les corvettes de "l'Uranie" et la "Physicienne"* (L. Freycinet), Paris, Pillet Aine, 592-657, 10 pls.
- Le Jolis, A. (1863). "Liste des algues marines de Cherbourg." *Mem. Soc. Imp. Sci. natn. Cherbourg*, 10, 1-168, 6 pls.
- Lemoine, M. (1928). "Un nouveau genre de Melobesiees : *Mesophyllum*." *Bull. Soc. bot. Fr.*, 4, 251-254.
- Levring, T. (1941). "Die Meeresalgen der Juan Fernandez Inseln." In *The natural history of Juan Fernandez and Easter Island*, Vol. 2, (C. Skottsberg), Uppsala, Almqvist and Wiksells, 601-670, 5 pls.
- Levring, T. (1946). "A list of marine algae from Australia and Tasmania." *Acta Horti Gothoburg*, 16, 215-227.
- Levring, T. (1953). "The marine algae of Australia. I. Rhodophyta : Goniotrichales, Bangiales and Nemalionales." *Ark. Bot. Ser.* 2, 2, 457-530.
- Lewis, J.A. (1979). "Marine biofouling at the North Barnard Islands, Queensland." Report MRL-R-740, Materials Research Laboratories, Melbourne, Victoria.
- Lewis, J.A., Dunstan, I.C. and Forsyth, J.R. (1981). "Biological survey of marine communities around Triangular Island (Shoalwater Bay, Queensland)." Report MRL-R-810, Materials Research Laboratories, Melbourne, Victoria.
- Linnaeus, C. (1758). *Systema naturae*, Vol. 1, Stockholm, L. Salvii, 824 pp.
- Lucas, A.H.S. (1909). "Revised list of the Fucoideae and Florideae of Australia." *Proc. Linn. Soc. N.S.W.*, 34, 1-61.
- Lucas, A.H.S. (1927). "Notes on Australian marine algae. V." *Proc. Linn. Soc. N.S.W.*, 52, 555-562, pls. 41-48.
- Lucas, A.H.S. (1931). "The marine algae hitherto recorded from north-east Australia." *Rep. Gt Barrier Reef Comm.*, 3, 47-57.

- Lucas, A.H.S. (1934). "Notes on Australian marine algae. VII. The algae of the Low Islands." *Proc. Linn. Soc. N.S.W.*, 59, 348-350.
- Lucas, A.H.S. (1935). "The marine algae of Lord Howe Island." *Proc. Linn. Soc. N.S.W.*, 60, 194-232.
- Lucas, A.H.S. and Perrin, F. (1947). *The seaweeds of South Australia*, Pt. II. *Red seaweeds*, Adelaide, S. Aust. Govt. Printer, 107-458.
- Martius, C.F.P. von (1828). *Flora Brasiliensis*, I, Stuttgartiae and Tubingae.
- Masaki, T. (1968). "Studies on the Melobesioideae of Japan." *Mem. Fac. Fish. Hokkaido Univ.*, 16, 1-80, pls. 1-79.
- May, V. (1948a). "The algal genus *Gracilaria* in Australia." *Bull. Coun. scient. ind. Res. Melb.*, 235, 1-64, 15 pls.
- May, V. (1948b). "Studies on Australian marine algae. IV. Further geographical records." *Proc. Linn. Soc. N.S.W.*, 73, 293-297.
- May, V. (1949). "Studies on Australian marine algae. V." *Proc. Linn. Soc. N.S.W.*, 74, 196-202.
- May, V. (1951a). "Studies on Australian marine algae. VI. New geographical records of certain species." *Proc. Linn. Soc. N.S.W.*, 76, 83-87.
- May, V. (1951b). "The marine algae of Brampton I., Great Barrier Reef, off Mackay, Queensland." *Proc. Linn. Soc. N.S.W.*, 76, 88-104.
- May, V. (1965). "A census and key to the species of Rhodophyceae (Red algae) recorded from Australia." *Contr. N.S.W. natn Herb.*, 3, 349-429.
- Mazoyer, G. (1938). "Les Céramiacées de l'Afrique du Nord." *Bull. Soc. Hist. nat. Afr. N.*, 29, 317-331.
- Millar, A.J.K. and Kraft, G.T. (1984). "The red algal genus *Acrosymphyton* (Dumontiaceae, Cryptonemiales) in Australia." *Phycologia*, 23, (in press).
- Min-Thein, U. and Womersley, H.B.S. (1976). "Studies on southern Australian taxa of Solieriaceae, Rhabdoniaceae and Rhodophyllidaceae (Rhodophyta)." *Aust. J. Bot.*, 24, 1-166.
- Montagne, J.F.C. (1840a). "Plantes cellulaires." In *Histoire naturelle des îles Canaries*, Vol. 3(2), *Phytographie* Sec. 4 (P.B. Webb and S. Bertholet), Paris, 208 pp., 9 pls.
- Montagne, J.F.C. (1840b). "Seconde centurie de plantes cellulaires exotiques nouvelles, decades I et II." *Annls Sci. nat. (Bot.)*, Sér. 2, 13, 197-207.
- Montagne, J.F.C. (1842). "Troisieme centurie de cellulaires exotiques nouvelles." *Annls Sci. nat. (Bot.)*, Sér. 2, 18, 241-282.

- Montagne, J.F.C. (1844). "Quelques observations touchant la structure et la fructification des genres *Ctenodes*, *Delisea* et *Lenormandia*, de la famille des floridiées." *Annls Sci. nat. (Bot.)*, Sér. 3, 1, 1-11, pls. 10-11.
- Montagne, J.F.C. (1845). *Voyage au Pole Sud et dans l'Océanie sur les Corvettes "l'Astrolabe" et la "Zélée"*, Botanique, I. Plantes Cellulaires, Paris.
- Montagne, J.F.C. (1846). "Phyceae". In *Exploration Scientifique de l'Algerie ... Botanique, Flora d'Algérie, Cryptogamie* (M.C. Durieu de Maisonneuve), Paris, 1-197, 16 pls.
- Montagne, J.F.C. (1847). "Enumeratio fungorum quous a Cl. Drège in Africa meridionali collectos." *Annls. Sci. nat. (Bot.)*, Sér. 3, 7, 166-181.
- Montagne, J.F.C. (1852). "Diagnoses phycologicae, seu quibus characteribus discriminandae sunt species Lichenum Algarumque nonnullae novae, in tomo Florae Chilensis Octavo nondum typis mandata descriptae." *Annls Sci. nat. (Bot.)*, Sér. 3, 14, 283-309.
- Montagne, J.F.C. (1856). *Sylloge generum specierumque plantarum cryptogamarum ...*, Paris, J.B. Bailliere, 498 pp.
- Morrissey, J. (1980). "Community structure and zonation of macroalgae and hermatypic corals on a fringing reef flat of Magnetic Island (Queensland, Australia)." *Aquat. Bot.*, 8, 91-140.
- Mshigeni, K.E. (1978). "Taxonomic studies on the Hawaiian Hypneaceae with special reference to the genus *Hypnea* Lamx (Rhodophyta)." *Nova Hedwigia*, 29, 859-894.
- Mueller, F. von (1881). "Additamenta pro supplemento voluminis undecimi. Algae. E manuscriptis praecipue Sonderi." In *Supplementum ad volumen undecimum Fragmentorum phytographiae Australiae*, Melbourne, Govt. of the Colony of Victoria, 105-106.
- Naegeli, C. (1861). "Beitrage zue Morphologie und Systematik der Ceramiaceae." *Sber. bayer Akad. Wiss.*, 2, 297-415, 1 pl.
- Nardo, J.D. (1834). "De novo genere algarum cui nomen et *Hildenbrandtia*." *Isis (van Oken)*, 1834, 675-676.
- Nasr, A.-H. (1941). "Some new and little known algae from the Red Sea." *Revue algol.*, 12, 57-76.
- Ngan, Y. and Price, I.R. (1979). "The intertidal algae of the mainland coast in the vicinity of Townsville, Queensland." *Atoll Res. Bull.*, 237, 1-29.
- Okamura, K. (1897). "On the algae from Ogasawarajima (Bonin Islands)." *Bot. Mag. Tokyo*, 11, 1-16.

- Okamura, K. (1899). "Contributions toward a knowledge of the marine algae of Japan, III." *Bot. Mag., Tokyo*, 13, 2-11.
- Okamura, K. (1900). *Illustrations of the marine algae of Japan*, Tokyo, Keigkoshu, 93 pp, 30 pls.
- Okamura, K. (1904). "List of marine algae collected in Caroline Islands and Australia." *Bot. Mag., Tokyo*, 18, 77-96.
- Okamura, K. (1907). *Icones of Japanese algae*, 1(4), Tokyo, 65-92, pls. 16-20.
- Okamura, K. (1908). *Icones of Japanese algae*, 1(6), Tokyo, 121-146, pls. 26-30.
- Okamura, K. (1915). *Icones of Japanese algae*, 3(4), Tokyo, 55-77, pls. 116-120.
- Okamura, K. (1930). *Icones of Japanese algae*, 6(3), Tokyo, 19-27, pls. 261-265.
- Okamura, K. (1935). *Icones of Japanese algae*, 7(5), Tokyo, 39-43, pls. 321-325.
- Pallaghy, C.K., Minchinton, J., Kraft, G.T. and Wetherbee, R. (1983). "Presence and distribution of bromine in *Thysanocladia densa* (Solieriaceae, Gigartinales), a marine red alga from the Great Barrier Reef." *J. Phycol.*, 19, 204-208.
- Papenfuss, G.F. (1942). "Notes on algal nomenclature. I. *Pollexfenia*, *Jeannerettia* and *Mesotrema*." *Proc. natn. Acad. Sci. U.S.A.*, 28, 446-451.
- Papenfuss, G.F. (1950). "Review of the genera of algae described by Stackhouse." *Hydrobiologia*, 2, 181-208.
- Papenfuss, G.F. (1952). "Notes on South African marine algae. III." *J.S. Afr. Bot.*, 17, 167-188.
- Papenfuss, G.F. (1956). "On the nomenclature of some Delesseriaceae." *Taxon*, 5, 158-162.
- Papenfuss, G.F. (1961). "The structure and reproduction of *Caloglossa leprieurii*." *Phycologia*, 1, 8-31.
- Papenfuss, G.F. (1967). "Notes on algal nomenclature. V. Various Chlorophyceae and Rhodophyceae." *Phykos*, 5, 95-105.
- Papenfuss, G.F. and Edelstein, T. (1974). "The morphology and taxonomy of the red alga *Sarconema* (Gigartinales, Solieriaceae)." *Phycologia*, 13, 31-43.
- Papenfuss, G.F., Mshigeni, K.E. and Chiang, Y.M. (1982). "Revision of the red algal genus *Galaxaura* with special reference to the species occurring in the western Indian Ocean." *Botanica mar.*, 25, 401-444.

- Parke, M. and Dixon, P.S. (1976). "Check-list of British marine algae - third revision." *J. mar. biol. Ass. U.K.*, 56, 527-594.
- Parsons, M.J. (1975). "Morphology and taxonomy of the Dasyaceae and the Lophothalieae (Rhodomelaceae) of the Rhodophyta." *Aust. J. Bot.*, 23, 549-713.
- Pham-Hoang Ho (1969). *Marine algae of South Vietnam*, Saigon, Study Centre. (In Vietnamese).
- Piccone, A. (1884). "Contribuzioni all'algologia Eritrea." *Nuovo G. bot. ital.*, 16, 281-332, pls. 7-9.
- Pilger, R. (1911). "Die Meeresalgen von Kamerun." *Bot. Jb.*, 46, 294-323.
- Post, E. (1936). "Systematische und pflanzengeographische Notizen sur *Bostrychia-Caloglossa* Assoziation." *Revue algol.*, 9, 1-84.
- Post, E. (1943). "Zur Morphologie und Okologie von *Caloglossa*." *Arch. Protistenk.*, 96, 123-220.
- Price, I.R., Larkum, A.W.D. and Bailey, A. (1976). "Checklist of the marine benthic plants collected in the Lizard Island area." *Aust. J. Plant Physiol.*, 3, 3-8.
- Rasmussen, R.A. (1964). "The structure and reproduction of *Sarcodia montagneana* (Rhodophyta)." *Phycologia*, 4, 1-7.
- Reinbold, T. (1900). "Meeres Algen von den Norfolk Inseln." *Nuovo Notarisia*, 11, 147-153.
- Rosanoff, S. (1866). "Recherches anatomiques sur les Mélobesiées." *Mem. Soc. Imp. Sci. natn. Cherbourg*, 12, 1-112.
- Saenger, P. (1979). "Records of subtidal algae from the Swains Reef complex, Great Barrier Reef, Queensland." *Proc. R. Soc. Qd.*, 90, 51-55.
- Saenger, P. (1982). "A new species of *Veleroa* (Rhodophyta : Rhodomelaceae) from Eastern Australia." *Proc. R. Soc. Qd.*, 93, 65-69, pl. 4.
- Saenger, P., Specht, M.M., Specht, R.L. and Chapman, V.J. (1977). "Mangal and coastal salt-marsh communities in Australasia." In *Wet coastal ecosystems* (V.J. Chapman, ed.), Amsterdam, Elsevier, 293-345.
- Saenger, P., Stephenson, W. and Moverley, J. (1979). "The subtidal fouling organisms of the Calliope River and Auckland Creek, Central Queensland, Australia." *Mem. Qd. Mus.*, 19, 399-412.
- Saenger, P., Stephenson, W. and Moverley, J. (1980). "The estuarine macrobenthos of the Calliope River and Auckland Creek, Queensland." *Mem. Qd. Mus.*, 20, 143-161.
- Saenger, P. and Wollaston, E.M. (1982). "A new species of *Crouania* (Rhodophyta : Ceramiaceae) from Port Curtis, Queensland." *Proc. R. Soc. Qd.*, 93, 79-82, pl. 6.

- Saito, Y. (1967). "Studies on Japanese species of *Laurencia*, with special reference to their comparative morphology." *Mem. Fac. Fish., Hokkaido Univ.*, 15, 1-81, pls. 1-18.
- Saito, Y. (1969). "The algal genus *Laurencia* from the Hawaiian Islands, the Philippine Islands and adjacent areas." *Pacif. Sci.*, 23, 148-160.
- Saito, Y. and Womersley, H.B.S. (1974). "The southern Australian species of *Laurencia* (Ceramiales, Rhodophyta)." *Aust. J. Bot.*, 22, 815-874.
- Sammarco, P.W. (1983). "Effects of fish grazing and damsel fish territoriality on coral reef algae. I. Algal community structure." *Mar. Ecol. Prog. Ser.*, 13, 1-14.
- Santelices, B. (1976). "Taxonomic and nomenclatural notes on some Gelidiales (Rhodophyta)." *Phycologia*, 15, 165-173.
- Santelices, B. (1977). "A taxonomic review of Hawaiian Gelidiales (Rhodophyta)." *Pacif. Sci.*, 31, 61-84.
- Scagel, R.F. (1962). "The genus *Dasyclonium* J. Agardh." *Can. J. Bot.*, 40, 1017-1040.
- Schmitz, C.J.F. (1889). "Systematische Übersicht der bisher bekannten Gattungen der Florideen." *Flora, Jena*, 72, 435-456.
- Schmitz, C.J.F. (1893). "Die Gattung *Lophothalia* J. Ag." *Ber. dt. bot. Ges.*, 11, 212-232.
- Schmitz, C.J.F. (1895). "Marine Florideen von Deutsch-Ost Africa." *Bot. Jb.*, 21, 137-177.
- Schmitz, C.J.F. (1896). "Kleinere Beiträge zur Kenntniss der Florideen. VI." *Nuova Notarisia*, 7, 1-32.
- Schmitz, C.J.F. and Hauptfleisch, P. (1897). "Rhodophyceae." In *Die natürlichen pflanzenfamilien*, Vol. 1(2), (A. Engler and K. Prantl, eds.), Leipzig, 298-544.
- Scott, F.J., Wetherbee, R. and Kraft, G.T. (1982). "The morphology and development of some prominently stalked southern Australian Halymeniaceae (Cryptonemiales, Rhodophyta). I. *Cryptonemia kallymenioides* (Harvey) Kraft comb. nov. and *C. undulata* Sonder." *J. Phycol.*, 18, 245-257.
- Searles, R.B. (1968). "Morphological studies of red algae of the order Gigartinales." *Univ. Calif. Publs. Bot.*, 43, 1-86, pls. 1-12.
- Setchell, W.A. (1914). "The *Scinaia* assemblage." *Univ. Calif. Publs. Bot.*, 6, 79-152, pls. 10-16.
- Setchell, W.A. (1924). "American Samoa : Part 1. Vegetation of Tutuila Island." *Pap. Dep. mar. Biol. Carnegie Instn Wash.*, 20, 1-188, pls. 18-20.

- Setchell, W.A. (1926). "Tahitian algae." *Univ. Calif. Publs. Bot.*, 12, 61-142.
- Setchell, W.A. (1943). "Mastophora and the Mastophoreae: genus and sub-family of Corallinaceae." *Proc. natn. Acad. Sci. U.S.A.*, 29, 127-135.
- Setchell, W.A. and Gardner, N.L. (1924). "New marine algae from the Gulf of California." *Proc. Calif. Acad. Sci., Ser. 4*, 12, 695-949, 77 pls.
- Setchell, W.A. and Gardner, N.L. (1930). "Marine algae of the Revillagigedo Islands Expedition in 1925." *Proc. Calif. Acad. Sci., Ser. 4*, 19, 109-215, 12 pls.
- Setchell, W.A. and Mason, L.R. (1943). "New or little known crustaceous corallines of Pacific North America." *Proc. natn. Acad. Sci. U.S.A.*, 29, 92-97.
- Silva, P.C. (1952). "A review of nomenclatural conservation in the algae from the point of view of the type method." *Univ. Calif. Publs. Bot.*, 25, 241-324.
- Silva, P.C. (1957). "Remarks on algal nomenclature." *Taxon*, 6, 141-145.
- Sonder, O.G.W. (1845). "Nova algarum genera et species quas in itinere ad oras occidentales Novae Hollandiae collegit L. Preiss." *Bot. Ztg.*, 3, 49-57.
- Sonder, O.G.W. (1846). "Algae." In *Plantae Preissianae sive Enumeratio Plantarum quas in Australasia Occidentali et Meridionali-occidentali Annis 1838-1841 collegit Ludovicus Preiss*, Vol. 2, (C. Lehmann), Hamburg, 148-195.
- Sonder, O.G.W. (1852). "Plantae Muelleriana, Algae." *Linnaea*, 25, 657-709.
- Sonder, O.G.W. (1855). "Algae annis. 1852 et 1853 collectae." *Linnaea*, 26, 506-568.
- Sonder, O.G.W. (1871). "Die Algen des tropischen Australiens." *Abh. Verh. naturw. Ver. Hamburg*, 5, 33-74, pls. 1-6.
- Sonder, O.G.W. (1880). "Algae Australianae hactenus cognitae." In *Fragmenta Phytographiae Australiae*, Suppl. ad Vol. 11 (F. Mueller), Melbourne, 1-42.
- Sreenivasa Rao, P. (1970). "Systematics of Indian Gelidiales." *Phykos*, 9, 63-78, pls. 1,2.
- Stephenson, W., Williams, W.T. and Cook, S.D. (1974). "The benthic fauna of soft bottoms, southern Moreton Bay." *Mem. Qd. Mus.*, 17, 73-123.
- Suringar, W.F.R. (1870). *Algae Japonicae*, Harlem, 39 pp. 25 pls.
- Tanaka, T. (1941). "The genus *Hypnea* from Japan." *Scient. Pap. Inst. algol. Res. Hokkaido Univ.*, 2, 227-250, pl. 53.

- Taylor, W.R. (1928). "The marine algae of Florida, with special reference to the Dry Tortugas." *Pap. Tortugas Lab.*, 25, 1-219, pls. 1-20.
- Taylor, W.R. (1939). "Algae collected on the Presidential cruise of 1938." *Smithson misc. Collns.*, 98(9), 1-18, pls. 1-2.
- Taylor, W.R. (1945). "Pacific marine algae of the Allan Hancock Expeditions to the Galapagos Islands." *Allan Hancock Pacif. Exped.*, 12, 1-528, 100 pls.
- Taylor, W.R. (1960). *Marine algae of the eastern tropical and subtropical coasts of the Americas*, Ann Arbor, Univ. of Michigan Press, 870 pp, 80 pls.
- Trono, G.C. (1969). "The marine benthic algae of the Caroline Islands. II. Phaeophyta and Rhodophyta." *Micronesica*, 5, 25-119, 11 pls.
- Trono, G.C. (1972). "Notes on some marine benthic algae in the Phillipines." *Kalikasan*, 1, 126-147.
- Tseng, C.K. (1942). "Marine algae of Hong Kong. II. The genus *Catenella*." *J. Wash. Acad. Sci.*, 32, 142-146.
- Tseng, C.K. (1943a). "Marine algae of Hong Kong. III. The genus *Bostrychia*." *Pap. Mich. Acad. Sci.*, 28, 165-183.
- Tseng, C.K. (1943b). "Marine algae of Hong Kong. IV. The genus *Laurencia*." *Pap. Mich. Acad. Sci.*, 28, 185-208, pls. 1-4.
- Tseng, C.K. (1944). "Marine algae of Hong Kong. VI. The genus *Polysiphonia*." *Pap. Mich. Acad. Sci.*, 29, 67-82.
- Turner, J.A. and Woelkerling, W.J. (1982). "Studies on the *Mastophora-Lithoporella* complex (Corallinaceae, Rhodophyta). I. Meristems and thallus structure and development." *Phycologia*, 21, 201-217.
- Unger, F. (1858). "Beiträge zur näheren Kenntniss des Leithakalkes Namentlich der vegetabilischen Einschulusse und der Bildungsgeschichte desselben." *Denkschr. Akad. Wiss., Wien*, 14, 13-38, 2 pls.
- Vickers, A. (1905). "Liste des algues marines de la Barbade." *Annl. Sci. nat. (Bot.)*, sèr. 9, 1, 45-66.
- Weber van Bosse, A. (1904). "Corallineae verae of the Malay Archipelago." *Siboga Exped.*, 61, 78-110, pls. 14-16.
- Weber van Bosse, A. (1910a). "Notice sur quelques genres nouveaux d'algues de l'Archipel Malaisien." *Annl. Jard. bot. Buitenz.*, sèr. 2, 9, 25-33.
- Weber van Bosse, A. (1910b). "Sur deux nouveaux cas de symbiose entre Algues et éponges." *Annl. Jard. bot. Buitenz.*, sèr. 2, Suppl. 3, 587-594, pls. 16, 17.

- Weber van Bosse, A. (1913). "Marine algae, Rhodophyceae, of the Sealark expedition, collected by Mr J. Stanley Gardiner, M.A." *Trans. Linn. Soc. Lond. (Bot.)*, 8, 105-142.
- Weber van Bosse, A. (1921). "Liste des algues du Siboga. II. Rhodophyceae, Pt. 1. Protofloridae, Nemalionales, Cryptonemiales." *Siboga Exped.*, 59, 187-310, pls. 6-8.
- Weber van Bosse, A. (1923). "Liste des algues du Siboga. III. Rhodophyceae, Pt. 2. Ceramiales." *Siboga Exped.*, 59, 311-392, pls. 9,10.
- Weber van Bosse, A. (1928). "Liste des algues du Siboga. IV. Rhodophyceae, Pt. 3. Gigartinales et Rhodymeniales." *Siboga Exped.*, 59, 393-533, pls. 11-16.
- Woelkerling, W.J. (1971). "Morphology and taxonomy of the *Audouinella* complex (Rhodophyta) in southern Australia." *Aust. J. Bot.*, Suppl. 1, 1-91.
- Woelkerling, W.J. (1973). "The morphology and systematics of the *Audouinella* complex (Acrochaetiaceae, Rhodophyta) in northeastern United States." *Rhodora*, 75, 529-621.
- Woelkerling, W.J. (1980). "Studies on *Metamastophora* (Corallinaceae, Rhodophyta). II. Systematics and distribution." *Br. phycol. J.*, 15, 227-245.
- Wollaston, E.M. (1968). "Morphology and taxonomy of southern Australian genera of *Crouaniae* Schmitz (Ceramiales, Rhodophyta)." *Aust. J. Bot.*, 16, 217-417.
- Womersley, H.B.S. (1958). "Marine algae from Arnhem Land, North Australia." *Rec. Am.-Aust. scient. Exped. Arnhem Ld.*, 3, 139-161.
- Womersley, H.B.S. (1965). "The Helminthocladiales (Rhodophyta) of southern Australia." *Aust. J. Bot.*, 13, 451-487.
- Womersley, H.B.S. (1971). "The genus *Plocamium* (Rhodophyta) in southern Australia." *Trans. R. Soc. S. Aust.*, 95, 9-27.
- Womersley, H.B.S. (1978). "Southern Australian species of *Ceramium* Roth (Rhodophyta)." *Aust. J. mar. Freshwat. Res.*, 29, 205-257.
- Womersley, H.B.S. (1979). "Southern Australian species of *Polysiphonia* Greville (Rhodophyta)." *Aust. J. Bot.*, 27, 459-528.
- Womersley, H.B.S. (1981a). "Biogeography of Australasian marine macroalgae." In *Marine botany: an Australasian perspective* (M.N. Clayton and R.J. King, eds.), Melbourne, Longman Cheshire, 292-307.
- Womersley, H.B.S. (1981b). "Aspects of the distribution and biology of Australian marine macroalgae." In *The Biology of Australian plants* (J.S. Pate and A.J. McComb, eds.), Nedlands, Univ. of Western Australia, 294-306.

- Womersley, H.B.S. and Bailey, A. (1970). "Marine algae of the Solomon Islands." *Phil. Trans. R. Soc. Ser. B.*, 259, 257-352.
- Womersley, H.B.S. and Cartledge, S.A. (1975). "The southern Australian species of *Spyridia* (Ceramiaceae, Rhodophyta)." *Trans. R. Soc. S. Aust.*, 99, 221-234.
- Womersley, H.B.S. and Conway, E. (1975). "*Porphyra* and *Porphyropsis* (Rhodophyta) in Southern Australia." *Trans. R. Soc. S. Aust.*, 99, 59-70.
- Womersley, H.B.S. and Shepley, E.A. (1958). "Studies on the *Sarconemia* group of the Rhodophyta." *Aust. J. Bot.*, 7, 168-223.
- Womersley, H.B.S. and Shepley, E.A. (1982). Southern Australian species of *Hypoglossum* (Delesseriaceae, Rhodophyta). *Aust. J. Bot.*, 30, 321-346.
- Womersley, H.B.S. and Sinkora, D. (1981). "*Sonderophycus* and the type specimen of *Peyssonnelia australis* (Cryptonemiales, Rhodophyta)." *Trans. R. Soc. S. Aust.*, 105, 85-87.
- Wynne, M.J. and Kraft, G.T. (1981). "Classification summary." In *The biology of seaweeds* (C.S. Lobban and M.J. Wynne, eds.), Oxford, Blackwell Scientific, 743-750.
- Wynne, M.J., Millar, A.J.K. and Kraft, G.T. (1984). "*Platysiphonia marginalis* sp. nov. (Delesseriaceae) a new red alga from eastern Australia." *Phycologia*, 23, (in press).
- Yamada, Y. (1931). "Notes on *Laurencia*, with special reference to the Japanese species." *Univ. Calif. Publs. Bot.*, 16, 185-310.
- Yamada, Y. (1933). "Notes on some Japanese algae. V." *J. Fac. Sci. Hokkaido Univ.*, Ser. 5, 2, 277-285, pls. 10-13.
- Yamada, Y. (1938). "The species of *Liagora* from Japan." *Scient. Pap. Inst. algol. Res. Hokkaido Univ.*, 2, 1-34, pls. 1-15.
- Yamada, Y. (1944). "A list of marine algae from the Atoll of Ant." *Scient. Pap. Inst. algol. Res. Hokkaido Univ.*, 3, 31-45, pls. 6, 7.
- Yamamoto, H. (1978). "Systematic and anatomical study of the genus *Gracilaria* in Japan." *Mem. Fac. Fish. Hokkaido Univ.*, 25, 97-152, pls. 1-49.
- Zanardini, G. (1842). "Synopsis algarum in mari Adriatico hucusque collectarum." *Memorie Accad. Sci. Torino*, Ser. 2, 4.
- Zanardini, G. (1858). "Plantarum in mari rubro hucusque collectarum enumeratio." *Memorie R. Ist. veneto Sci.*, 7, 209-309, pls. 3-14.

Zanardini, G. (1865). *Iconographia phycologica adriatica*, Vol. 2, Venezia,
168 pp. pls. 41-80.

Zanardini, G. (1872). "Phycearum indicarum pugillus." *Memorie R. Ist veneto
Sci.*, 17, 129-170, pls. 1-12.

Zanardini, G. (1874). "Phyceae Australicae novae et minus cognitae." *Flora,
Jena*, 57, 486-490, 497-505.

Zanardini, G. (1878). "Phyceae Papuanae novae vel minus cognitae." *Nuovo
G. bot. ital.*, 10, 34-40.

6. INDEX

<i>Acanthophora dendroides</i>	49	<i>Balliella amphiglanda</i>	40
<i>muscoides</i>	49	<i>grandis</i>	40
var. <i>ramosissima</i>	49	<i>repens</i>	40
<i>orientalis</i>	49	<i>Bangia atropurpurea</i>	67
<i>ramulosa</i>	49	<i>simplex</i>	67
<i>spicifera</i>	49	<i>Bostrychia binderi</i>	50
<i>thierii</i>	49	f. <i>terrestris</i>	51
<i>Acrochaetium catenulatum</i>	9	<i>cornigera</i>	51
<i>effusum</i>	8	<i>flagellifera</i>	51
<i>pulvinatum</i>	8	<i>hongkongensis</i>	51
<i>subseriatum</i>	8	<i>intricata</i>	51
<i>thuretii</i>	9	<i>kelanensis</i>	51
<i>Acrosorium uncinatum</i>	45	<i>mixta</i>	51
<i>Acrosymphyton taylorii</i>	23	<i>moritziana</i>	51
<i>Acryocystis nana</i>	50	<i>radicans</i>	51
<i>Acrotylus prismaticus</i>	23	<i>simpliciuscula</i>	52
<i>Actinotrichia fragilis</i>	5	<i>tenella</i>	52
<i>rigida</i>	5	<i>Botryocladia leptopoda</i>	37
<i>Aglaothamnion cordatum</i>	39	<i>Brachycladia marginata</i>	6
<i>Amansia daemellii</i>	50		
<i>dietrichiana</i>	50	<i>Caloglossa adnata</i>	45
<i>glomerata</i>	50	<i>bombayensis</i>	45
<i>pumila</i>	50	<i>leprieurii</i>	46
<i>robinsoni</i>	54	var. <i>hookeri</i>	46
<i>Amphiroa anastomosans</i>	11	<i>mnioides</i>	46
<i>anceps</i>	11	<i>ogasawaranensis</i>	46
<i>crassa</i>	12	<i>Callithamnion byssoides</i>	40
<i>foliacea</i>	12	<i>corymbosum</i> var. <i>australis</i>	40
<i>fragilissima</i>	12	<i>Callophycus densus</i>	28
<i>gracilis</i>	12	<i>tridentifer</i>	28
<i>granifera</i>	18	<i>Carpopeltis capitellata</i>	19
<i>howensis</i>	12	<i>phyllophora</i>	19
<i>Aneuria lorentzii</i>	61	<i>Catanella nipae</i>	30
<i>Anotrichium tenue</i>	39	<i>opuntia</i>	30
<i>Antithamnion antillanum</i>	39	<i>subumbellata</i>	30
<i>lherminieri</i>	40	<i>Caulacanthus indicus</i>	31
<i>percurrens</i>	40	<i>okamurai</i>	31
<i>Antrocentrum nigrescens</i>	31	<i>salifugus</i>	31
<i>Areschougia congesta</i>	30	<i>ustulatus</i>	31
<i>laurencia</i>	30	<i>Centroceras apiculatum</i>	40
<i>Arthrocardia wardii</i>	13	<i>clavulatum</i>	40
<i>Asparagopsis armata</i>	5	var. <i>cryptacanthum</i>	41
<i>sandfordiana</i>	5	var. <i>micracanthum</i>	41
<i>taxiformis</i>	5	<i>minutum</i>	41
<i>Asterocystis ornata</i>	68	<i>Ceramium camouii</i>	41
<i>Audouinella dasyae</i>	8	<i>clarionense</i>	41
<i>daviesii</i>	8	<i>clavulatum</i>	41
<i>eugenea</i>	8	<i>cliftonianum</i>	41
<i>microscopica</i>	8	<i>codii</i>	41
<i>saviana</i>	9		
<i>secundata</i>	9		

AD-A142 138

CHECKLIST AND BIBLIOGRAPHY OF BENTHIC MARINE MACROALGAE
RECORDED FROM NORTHERN AUSTRALIA I RHODOPHYTA(U)
MATERIALS RESEARCH LABS ASCOT VALE (AUSTRALIA)
J A LEWIS JAN 84 MRL-R-912

2/2

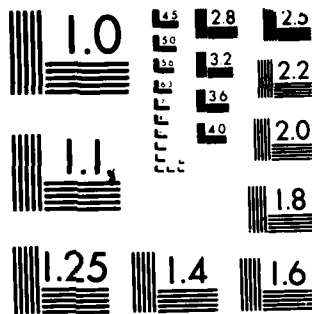
UNCLASSIFIED

F/G 6/3

NL



END
DATE
FILMED
7-84
DTIC



MICROCOPY RESOLUTION TEST CHART
NATIONAL BUREAU OF STANDARDS 1963 A

<i>fastigiatum</i>	41	<i>Corallopsis australasica</i>	53
<i>flaccidum</i>	41	<i>cacalia</i>	25
<i>gracillimum</i>	41	<i>cereus</i>	24
var. <i>byssoideum</i>	41	<i>minor</i>	27
<i>huysmansii</i>	42	<i>salicornia</i>	27
<i>maryae</i>	42	var. <i>minor</i>	27
<i>mazatlanense</i>	42	<i>urvillei</i>	24
<i>punctiforme</i>	42	<i>Coriophyllum setchelli</i>	21
<i>procumbens</i>	42	<i>Cornicularia rosea</i>	15
<i>pygmaeum</i>	43	<i>Corynecladia umbellata</i>	53
<i>recortieatum</i>	42	<i>Corynomorpha prismaticus</i>	23
<i>setchellii</i>	42	<i>Corynospora australis</i>	44
<i>taylorii</i>	42	<i>Crouania australis</i>	44
<i>tenuissimum</i> var. <i>pygmaeum</i>	42	<i>capricornia</i>	43
<i>vagabunde</i>	43	<i>minutissima</i>	43
<i>Ceratodictyon spongiosum</i>	23	<i>Cruoriella armorica</i>	21
<i>Champia affinis</i>	39	<i>Cryptonemia baileyi</i>	19
<i>compressa</i>	39	<i>caliculata</i>	19
<i>parvula</i>	38	<i>capitellata</i>	19
<i>vieillardii</i>	39	<i>luxurians</i>	20
<i>Chauvinella coriifolia</i>	46	<i>undulata</i>	19
<i>Chauvinia coriifolia</i>	46	<i>Cubiculosporum koronicarpus</i>	37
<i>Cheilosporum sagittatum</i>	13	<i>Curdiea obtusata</i>	32
<i>spectabile</i>	13	<i>rhizophora</i>	32
<i>wardii</i>	13		
<i>Chondria armata</i>	52		
<i>dangeardii</i>	52	<i>Dasya ballouviana</i>	48
<i>dasyphylla</i>	52	<i>caraibica</i>	48
<i>lancifolia</i>	52	<i>cuspidifera</i>	48
<i>minutula</i>	52	<i>elongata</i>	48
<i>rainfordii</i>	52	<i>fruticulosa</i>	48
<i>repens</i>	53	<i>iyengarii</i>	48
<i>tenuissima</i>	53	<i>multiceps</i>	48
<i>Chondrococcus ambiguus</i>	36	<i>pacifica</i>	48
<i>harveyi</i>	36	<i>Dasyclonium flaccidum</i>	53
<i>hornemannii</i>	36	<i>Delisea fimbriata</i>	5
<i>kilneri</i>	36	<i>pulchra</i>	5
<i>Chroodactylon ornata</i>	68	<i>Dermatolithon pustulatum</i>	13
<i>Chrysiemia kaernbachii</i>	37	<i>Desmia ambigua</i>	37
<i>uvaria</i>	37	<i>hornemannii</i>	37
var. <i>leptopoda</i>	37	<i>kilneri</i>	37
<i>Coelarthrum boergesenii</i>	37	<i>pulvinata</i>	37
<i>Coelothrix indica</i>	38	<i>Dicranema filiforme</i>	29
<i>irregularis</i>	37	<i>rosaliae</i>	32
<i>Corallina adhaerens</i>	15	<i>setaceum</i>	29
<i>chilensis</i>	13	<i>Dictymania sonderi</i>	53
<i>cuvieri</i>	14	<i>tridens</i>	53
<i>decussato-dichotoma</i>	15	<i>Dictyurus purpurescens</i>	48
<i>gracilis</i>	14	<i>sp.</i>	49
<i>granifera</i>	13	<i>Dicurella sp.</i>	32
<i>micrarthrodia</i>	15	<i>Digenea simplex</i>	51
<i>officinalis</i>	13		
var. <i>chilensis</i>	13		
<i>rosea</i>	14		
<i>rubens</i>	15		

<i>Echinothamnion hookeri</i>	54	<i>bornetii</i>	11
<i>Enantiocladia robinsonii</i>	54	<i>pannosa</i>	11
<i>Endocladia complanata</i>	31	<i>Gelidiopsis acrocarpa</i>	24
<i>Endosiphonia spinuligera</i>	54	<i>intricata</i>	24
<i>Epymenia cuneata</i>	38	<i>scoparia</i>	24
<i>Erythroclonium muelleri</i>	31	<i>variabilis</i>	24
<i>sonderi</i>	31	<i>Gelidium acrocarpum</i>	24
<i>Erythrotrichia carnea</i>	68	<i>australe</i>	9
<i>Ethelia australis</i>	22	<i>corneum</i>	9, 10
<i>Eucheuma cervicorne</i>	28	<i>crinale</i>	9
<i>crassum</i>	28	<i>var. perpusillum</i>	9
<i>denticulatum</i>	29	<i>heteroplatos</i>	9
<i>gelatinae</i>	29	<i>latifolium</i>	10
<i>muricatum</i>	29	<i>maidenii</i>	10
<i>serra</i>	29	<i>pulchellum</i>	10
<i>sonderi</i>	29	<i>pusillum</i>	10
<i>spinosum</i>	29	<i>rigidum</i>	11
<i>Euptilota articulata</i>	43	<i>Gigartina brachiata</i>	23
<i>formosissima</i>	43	<i>Goniolithon fosliei</i>	18
<i>Euzoniella flaccida</i>	53	<i>frutescens</i>	18
		<i>laccadavicum</i>	18
		<i>myriocarpum</i>	18
		<i>orthoblastum</i>	18
<i>Falkenbergia hillebrandii</i>	5	<i>Goniotrichum alsidii</i>	68
<i>Fernandosiphonia unilateralis</i>	54	<i>cornucervi</i>	68
<i>Fosliella farinosa</i>	14	<i>elegans</i>	68
<i>var. chalicodictyon</i>	14	<i>Gracilaria arcuata</i>	24
		<i>cacalia</i>	25
<i>Galaxaura arborea</i>	5	<i>canaliculata</i>	25
<i>cohaerens</i>	6	<i>compressa</i>	25
<i>cylindrica</i>	6	<i>confervoides</i>	27
<i>eburnea</i>	6	<i>corniculata</i>	26
<i>elongata</i>	7	<i>coronopifolia</i>	25
<i>fasciculata</i>	6	<i>crassa</i>	25
<i>fastigiata</i>	6	<i>cylindrica</i>	25
<i>filamentosa</i>	6	<i>edulis</i>	25
<i>fragilis</i>	7	<i>furcellata</i>	26
<i>glaberrima</i>	6	<i>howensis</i>	26
<i>glabriuscula</i>	7	<i>lemania</i>	25
<i>lapidescens</i>	7	<i>lichenoides</i>	26
<i>marginata</i>	6	<i>var. corniculata</i>	25
<i>oblongata</i>	6	<i>f. coronopifolia</i>	25
<i>obtusata</i>	7	<i>lucasii</i>	26
<i>robusta</i>	7	<i>pannosa</i>	26
<i>rudis</i>	6	<i>polyclada</i>	26
<i>rugosa</i>	7	<i>preissiana</i>	26
<i>squalida</i>	7	<i>purpurascens</i>	26
<i>subfruticulosa</i>	7	<i>ramalina</i>	38
<i>tumida</i>	7	<i>rhodotricha</i>	27
<i>umbellata</i>	7	<i>salicornia</i>	27
<i>veprecula</i>	6	<i>secundata</i>	27
<i>Gelidiella acerosa</i>	11	<i>taenioides</i>	26, 34
<i>adnata</i>	11	<i>textorii</i>	27
		<i>verrucosa</i>	27
		<i>Gracilariopsis rhodotricha</i>	27

<i>Grateloupia divaricata</i>	20	<i>rugulosa</i>	35
<i>subsimplex</i>	20	<i>seticulosa</i>	36
<i>Griffithsia crassiuscula</i>	43	<i>spinella</i>	36
<i>flabelliformis</i>	43	<i>valentiae</i>	36
<i>heteromorpha</i>	43	<i>Hypoglossum barbatum</i>	46
<i>subcylindrica</i>	43	<i>harveyanum</i>	46
<i>tenuis</i>	39	<i>hypoglossoides</i>	46
<i>thyrsigera</i>	39	<i>spathulatum</i>	46
<i>Gymnogongrus assimilis</i>	28		
<i>griffithsiae</i>	28	<i>Jania adhaerens</i>	14
<i>irregularis</i>	28	<i>crassa</i>	15
<i>pygmaeus</i>	28	<i>fastigiata</i>	15
<i>Gymnophycus hapsisphorus</i>	44	<i>micrarthrodia</i>	15
<i>hypispermis</i>	44	var. <i>tenuissima</i>	15
		<i>natalensis</i>	15
<i>Halichrysis micans</i>	38	<i>rosea</i>	15
<i>Haliptilon cuvieri</i>	14	<i>rubens</i>	15
<i>gracile</i>	14	<i>tenuissima</i>	15
<i>rosea</i>	14	<i>Jeannerettia lobata</i>	55
<i>Haloplegma duperreyi</i>	44	<i>pedicellata</i>	55
<i>Halymenia ceylanica</i>	34		
<i>durvillaei</i>	20	<i>Laurencia botryoides</i>	55
<i>fimbriata</i>	20	var. <i>minor</i>	60
<i>floresia</i>	20	<i>brongniartii</i>	55
<i>lacerata</i>	20	<i>carolinensis</i>	56
<i>multifida</i>	20	<i>chinensis</i>	56
<i>ulvoidea</i>	20	<i>coccinea</i>	55
<i>Helminthocladia australis</i>	3	<i>concinna</i>	55
<i>Helminthora tumens</i>	3	<i>concreta</i>	56
<i>Herposiphonia insidiosa</i>	54	<i>cruciata</i>	56
<i>obscura</i>	54	<i>dendroidea</i>	57
<i>pacifica</i>	54	<i>divaricata</i>	59
<i>secunda</i>	55	<i>dotyi</i>	56
<i>subdisticha</i>	54	<i>elegans</i>	58
<i>tenella</i>	55	<i>filiformis</i>	56
f. <i>secunda</i>	55	f. <i>heteroclada</i>	56
<i>Heterosiphonia multiceps</i>	48	<i>flagellifera</i>	57
<i>wurdemannii</i> var. <i>laxa</i>	49	<i>flexilis</i>	57
<i>Hildenbrandia prototypus</i>	23	<i>forsteri</i>	57
<i>Hormoceras pygmaeum</i>	42	<i>gracilis</i>	57
<i>Hymenocladia gracilarioides</i>	38	<i>grevilleana</i>	56
<i>Hypnea boergesenii</i>	34	<i>heteroclada</i>	56
<i>cenomyce</i>	34	f. <i>decussata</i>	56
<i>cervicornis</i>	35	<i>humilis</i>	57
<i>charoides</i>	36	<i>intricata</i>	57
<i>cornuta</i>	35	<i>majuscula</i>	57
<i>divaricata</i>	35	var. <i>elegans</i>	58
<i>esperii</i>	36	<i>mariannensis</i>	58
<i>hamulosa</i>	35	<i>moretonensis</i>	58
<i>musciiformis</i>	36	<i>nidifica</i>	58
<i>nidifica</i>	35	var. <i>tenoir</i>	58
<i>nidulans</i>	35		
<i>pannosa</i>	35		

<i>obtusa</i>	58	<i>obscura</i>	64
<i>var. compacta</i>	59	<i>prostrata</i>	62
<i>var. divaricata</i>	59	<i>reptabunda</i>	64
<i>var. majuscula</i>	58	<i>saccorhiza</i>	63
<i>var. mollissima</i>	59	<i>scopularum</i>	65
<i>var. racemosa</i>	59	<i>subadunca</i>	62
<i>var. snackeyi</i>	59	<i>villum</i>	65
<i>pannosa</i>	59		
<i>papillosa</i>	59		
<i>var. thyrsoides</i>	59		
<i>parvipapillata</i>	59	<i>Martensia elegans</i>	46
<i>pedicularioides</i> var.		<i>speciosa</i>	47
<i>queenslandica</i>	60	<i>Mastophora affinis</i>	17
<i>perforata</i>	60	<i>foliacea</i>	17
<i>pinnatifida</i>	60	<i>lamourouxii</i>	17
<i>poitii</i>	60	<i>plana</i>	6, 17
<i>ptychodes</i>	60	<i>rosea</i>	17
<i>pygmaea</i>	60	<i>Melobesia coronata</i>	17
<i>rigida</i>	60	<i>farinosa</i>	14
<i>succisa</i>	61	<i>granulata</i>	14
<i>tenera</i>	61	<i>lichenoides</i>	17
<i>thuyoides</i>	61	<i>membranacea</i>	17
<i>venusta</i>	61	<i>pustulata</i>	14
<i>vieillardii</i>	58	<i>verrucata</i>	14
<i>Lenormandia spectabilis</i>	61	<i>Meristotheca ceylanica</i>	34
<i>Lenormandiopsis lorentzii</i>	61	sp.	32
<i>Leveillea gracilis</i>	62	<i>Mesotrema elegans</i>	46
<i>jungermannioides</i>	61	<i>Mesophyllum lichenoides</i>	17
<i>schimperi</i>	62	<i>mesomorphum</i>	17
<i>Liagora annulata</i>	4	<i>Metagoniolithon chara</i>	17
<i>cenomyce</i>	4	<i>gracile</i>	12
<i>ceranoides</i>	3	<i>graniferum</i>	12, 17
<i>cladonioides</i>	3	<i>Metamastophora plana</i>	17
<i>farinosa</i>	3	<i>Monosporus australis</i>	44
<i>hawaiiana</i>	4	<i>indicus</i>	44
<i>howensis</i>	4	<i>Murrayella pericladus</i>	62
<i>leprosa</i>	3	<i>Mychodea fastigiata</i>	32
<i>pinnata</i>	4	<i>halymenioides</i>	32
<i>rugosa</i> var. <i>vieillardii</i>	4	<i>zanardini</i>	32
<i>setchellii</i>	4	<i>Myriogramme bombayensis</i>	47
<i>valida</i>	4	<i>carnea</i>	47
<i>viscida</i>	3		
<i>Lithophyllum kotschyianum</i>	16		
<i>moluccense</i>	16	<i>Neogoniolithon fosliei</i>	18
<i>okamurai</i>	16	<i>frutescens</i>	18
<i>oncodes</i>	19	<i>laccadavicum</i>	18
<i>pallescens</i>	16	<i>myriocarpum</i>	18
<i>Lithoporella melobesioides</i>	16	<i>orthoblastum</i>	18
<i>Lithothamnion glaciale</i>	16	<i>pacificum</i>	19
<i>membranaceum</i>	17	<i>Neomonospora pedicellata</i> var. <i>tenuis</i>	44
<i>simulans</i>	16	<i>Neurymenia fraxinifolia</i>	62
<i>Lomentaria corallicola</i>	39	<i>Nitophyllum tongatense</i>	47
<i>parvula</i>	39		
<i>Lophocladia harveyi</i>	62		
<i>Lophosiphonia cristata</i>	62		

<i>Peyssonnelia atropurpurea</i>	21		
<i>australis</i>	22	<i>var. distans</i>	66
<i>calcea</i>	21	<i>subtilissima</i>	66
<i>capensis</i>	21	<i>tongatensis</i>	66
<i>coccinea</i>	22	<i>upolensis</i>	66
<i>conchicola</i>	22	<i>variegata</i>	66
<i>evae</i>	22	<i>zostericola</i>	64
<i>gunniana</i>	21	<i>Porolithon gardineri</i>	19
<i>hariotii</i>	22	<i>onkodes</i>	19
<i>inamoena</i>	22	<i>Porphyra columbina</i>	67
<i>mariti</i>	22	<i>denticulata</i>	67
<i>rubra</i>	22	<i>Portieria coccinea</i>	37
<i>Platysiphonia marginalis</i>	47	<i>Predaea incraspeda</i>	30
<i>miniata</i>	47	<i>laciniosa</i>	30
<i>Plocamium angustatum</i>	32	<i>weldii</i>	30
<i>cartilagineum</i>	33	<i>Prionitis obtusa</i>	21
<i>coccineum</i>	33	<i>Pterocladia caerulescens</i>	10
<i>var. tenue</i>	33	<i>caloglossoides</i>	10
<i>hamatum</i>	33	<i>capillacea</i>	10
<i>leptophyllum</i>	33	<i>lucida</i>	10
<i>mertensii</i>	33	<i>Ptilocladia australis</i>	44
<i>preissianum</i>	33		
<i>procerum var. mertensii</i>	33	<i>Reptataxis rhizophora</i>	32
<i>telfairiae</i>	32	<i>Rhabdonia nigrescens</i>	31
<i>Pollexfenia lobata</i>	55	<i>Rhodophyllis blepharicarpa</i>	26
<i>pedicellata</i>	55	<i>preissiana</i>	26
<i>Polysiphonia amphibolis</i>	63	<i>Rhodymenia anastomosans</i>	38
<i>amoena</i>	64	<i>leptophylla</i>	38
<i>baxteri</i>	63	<i>Roschera glomerulata</i>	66
<i>blandii</i>	63		
<i>coacta</i>	63	<i>Sarcocladia rhizophora</i>	32
<i>exilis</i>	63	<i>Sarcodia ciliata</i>	34
<i>ferulacea</i>	63	<i>montagneana</i>	34
<i>flaccidissima</i>	65	<i>palmata</i>	34
<i>var. smithii</i>	65	<i>Sarconema filiforme</i>	29
<i>fragilis</i>	63	<i>furcellatum</i>	29
<i>gelidii</i>	63	<i>Scinaia moniliformis</i>	8
<i>glomerulata</i>	66	<i>moretonensis</i>	8
<i>gracilis</i>	63	<i>Sebdenia ceylanica</i>	34
<i>hawaiiensis</i>	64	<i>maculata</i>	34
<i>herpa</i>	64	<i>Seirospora occidentalis</i>	44
<i>hookeri</i>	54	<i>Solieria chordalis</i>	30
<i>howei</i>	64	<i>mollis</i>	31
<i>implexa</i>	63	<i>robusta</i>	30
<i>infestans</i>	64	<i>Sonderopelta coriacea</i>	22
<i>isogona</i>	64	<i>Sonderophycus australis</i>	22
<i>macrocarpa</i>	64	<i>Spyridia biannulata</i>	45
<i>mollis</i>	64	<i>breviarticulata</i>	45
<i>opaca</i>	65	<i>filamentosa</i>	44
<i>platycarpa</i>	65	<i>spinella</i>	45
<i>purpureo-caerula</i>	65	<i>Stylonema cornucervi</i>	68
<i>scopularum</i>	65	<i>elegans</i>	68
<i>var. villum</i>	65		
<i>sertularioides</i>	65		
<i>sphaerocarpa</i>	65		

<i>Symphiocladia marchantioides</i>	67
<i>Taenioma nanum</i>	47
<i>perpusillum</i>	47
<i>Thamnoclonium seminerve</i>	21
<i>tissotii</i>	21
<i>Thuretia australasica</i>	49
<i>teres</i>	49
<i>Thysanocladia densa</i>	28
<i>laxa</i>	28
<i>Tolypiocladia glomerulata</i>	66
<i>Trichogloea requienii</i>	3
<i>Tylotus obtusatus</i>	32
<i>Vanvoorstia spectabilis</i>	47
<i>Veleroa elongata</i>	67
<i>Vidalia daemellii</i>	50
<i>fimbriata</i>	67
<i>pumila</i>	50
<i>spiralis</i>	67
<i>Wrangelia argus</i>	45
<i>pencillata</i>	45
<i>plumosa</i>	45
<i>Wurdemannia miniata</i>	33
<i>sp.</i>	32
<i>Yamadaella cenomyce</i>	4

(MRL-R-912)

DISTRIBUTION LIST

MATERIALS RESEARCH LABORATORIES

Director
Superintendent, Organic Chemistry Division
Mr F. Marson
Library (2 copies)
Mr J.A. Lewis

DEPARTMENT OF DEFENCE

Chief Defence Scientist/Deputy Chief Defence Scientist (1 copy)
Controller, Projects and Analytical Studies/
Superintendent, Science Projects and Administration
Army Scientific Adviser
Air Force Scientific Adviser
Navy Scientific Adviser
Officer-in-Charge, Document Exchange Centre (17 copies)
Technical Reports Centre, Defence Central Library
Central Office, Directorate of Quality Assurance - Air Force
Deputy Director, Scientific and Technical Intelligence,
Joint Intelligence Organisation
Librarian, Bridges Library
Librarian, Engineering Development Establishment
Defence Science Representative (Summary Sheets only)
Australia High Commission, London
Counsellor Defence Science, Washington, D.C. (Summary Sheets only)
Librarian (Through: Officer-in-Charge), Materials Testing
Laboratories, Alexandria, NSW
Senior Librarian, Aeronautical Research Laboratories
Senior Librarian, Defence Research Centre, Salisbury, SA

DEPARTMENT OF DEFENCE SUPPORT

Deputy Secretary, DDS
Head of Staff, British Defence Research & Supply Staff (Aust.)

OTHER FEDERAL AND STATE DEPARTMENTS AND INSTRUMENTALITIES

NASA Canberra Office, Woden, ACT
The Chief Librarian, Central Library, CSIRO
Library, Australian Atomic Energy Commission Research Establishment

MISCELLANEOUS - AUSTRALIA

Librarian, State Library of NSW, Sydney NSW
University of Tasmania, Morris Miller Lib., Hobart, Tas.

(MRL-R-912)

DISTRIBUTION LIST
(Continued)

MISCELLANEOUS

Library - Exchange Desk, National Bureau of Standards, USA
UK/USA/CAN/NZ ABCA Armies Standardisation Representative (4 copies)
The Director, Defence Scientific Information & Documentation
Centre, India
Military, Naval and Air Adviser, High Commission of India, Canberra
Director, Defence Research Centre, Kuala Lumpur, Malaysia
Exchange Section, British Library, UK
Periodicals Recording Section, Science Reference Library,
British Library, UK
Library, Chemical Abstracts Service
INSPEC: Acquisition Section, Institute of Electrical Engineers, UK
Engineering Societies Library, USA
Aeromedical Library, Brooks Air Force Base, Texas, USA
Ann Germany Documents Librarian, The Centre for Research
Libraries, Chicago, Ill.
Defense Attache, Australian Embassy, Bangkok, Thailand
(Att. D. Pender)

ADDITIONAL DISTRIBUTION

The Librarian, Australian Institute of Marine Science
The Librarian, Australian National University
The Librarian, CSIRO Division of Fisheries Research
The Librarian, Griffith University
The Librarian, James Cook University of North Queensland
The Librarian, Rockhampton Institute of Advanced Education
The Librarian, Macquarie University
The Librarian, Monash University
The Librarian, Latrobe University
The Librarian, Queensland Museum
The Librarian, Queensland Fisheries Service
The Librarian, University of Adelaide
The Librarian, University of Melbourne
The Librarian, University of New South Wales
The Librarian, University of Queensland
The Librarian, University of Sydney
The Librarian, University of Western Australia
The Director, Bureau of Flora and Fauna
The Director, Great Barrier Reef Marine Park Authority
The Director, Heron Island Research Station
The Director, Lizard Island Research Station
Dr M. Borowitzka, School of Environmental & Life Sciences,
Murdoch University
Ms V. Brown, R & I Department, Sewage Division, MMBW
Prof A. Cribb, Dept. of Botany, University of Queensland
Dr M. Clayton, Botany Dept., Monash University
Prof M. Doty, Botany Dept., University of Hawaii
Dr S. Ducker, School of Botany, University of Melbourne

(MRL-R-912)

DISTRIBUTION LIST
(Continued)

ADDITIONAL DISTRIBUTION (Contd)

Dr E. Gordon-Mills, Botany Dept., University of Adelaide
Dr B. Hatcher, CSIRO Western Regional Laboratory
Dr G. Kraft, School of Botany, University of Melbourne
Dr A. Larkum, School of Biological Sciences, University of Sydney
Dr V. May, National Herbarium of NSW, Sydney
Dr I. Price, Botany Dept., James Cook University
Dr P. Saenger, Camp Hill, Queensland
Dr R. Townsend, Botany Dept., Smithsonian Institute, Washington, DC
Dr G. Trono, Dept. of Botany, University of Philippines
Prof H. Womersley, Botany Dept., University of Adelaide
Dr W. Woelkerling, Dept. of Botany, Latrobe University
Dr E. Wollaston, Botany Dept., University of Adelaide

