

AD-A141 858

ON CONTINUOUS DISTRIBUTIONS OF DISLOCATIONS IN NONLOCAL 1 /
ELASTICITY(U) PRINCETON UNIV NJ DEPT OF CIVIL
ENGINEERING A C ERINGEN APR 84 84-SM-1

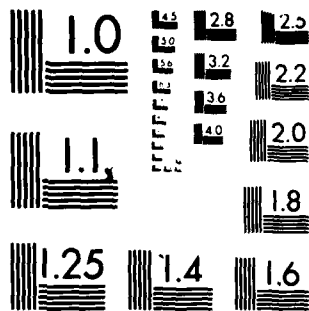
UNCLASSIFIED

N00014-83-K-0126

F/G 20/11

NL

END
DATE
FILMED
7-84
DTIC



MICROCOPY RESOLUTION TEST CHART
NATIONAL BUREAU OF STANDARDS-1963-A

(1)

AD-A141 858

ON CONTINUOUS DISTRIBUTIONS OF DISLOCATIONS
IN NONLOCAL ELASTICITY

A. Cemal Eringen
PRINCETON UNIVERSITY

Technical Report No. 60
Civil Engng. Res. Rep. No. 84-SM-1

PRINCETON UNIVERSITY
Department of Civil Engineering



DTIC
JUN 4 1984
A

DTIC FILE COPY

This document has been approved
for public release and sale; its
distribution is unlimited.

84 06 01 089

ON CONTINUOUS DISTRIBUTIONS OF DISLOCATIONS
IN NONLOCAL ELASTICITY

A. Cemal Eringen
PRINCETON UNIVERSITY

Technical Report No. 60
Civil Engng. Res. Rep. No. 84-SM-1

Research Sponsored by the
OFFICE OF NAVAL RESEARCH
under
Contract N00014-83-K-0126 Mod 4
Task No. NR 064-410

April 1984

Approved for public release:
distribution unlimited

Reproduction in whole or in part is permitted
for any purpose of the United States Government

S DTIC
ELECTE
JUN 4 1984
A

SECURITY CLASSIFICATION OF THIS PAGE (When Data Entered)

REPORT DOCUMENTATION PAGE		READ INSTRUCTIONS BEFORE COMPLETING FORM	
1. REPORT NUMBER #60 PRINCETON UNIVERSITY	GOVT ACSSION NO. AD-A141858	SECURITY CLASSIFICATION	CATALOG NUMBER
4. TITLE (and Subtitle) ON CONTINUOUS DISTRIBUTIONS OF DISLOCATIONS IN NONLOCAL ELASTICITY	5. TYPE OF REPORT & PERIOD COVERED technical report		
7. AUTHOR(s) A. Cemal Eringen	6. PERFORMING ORG. REPORT NUMBER 84-SM-1		
9. PERFORMING ORGANIZATION NAME AND ADDRESS PRINCETON UNIVERSITY Princeton, NJ 08544	8. CONTRACT OR GRANT NUMBER(s) N00014-83-K-0126 Mod 4		
11. CONTROLLING OFFICE NAME AND ADDRESS OFFICE OF NAVAL RESEARCH (Code 471) Arlington, VA 22217	10. PROGRAM ELEMENT PROJECT TASK AREA & WORK UNIT NUMBERS NR 064-410		
12. REPORT DATE April 1984	13. NUMBER OF PAGES 30		
14. MONITORING AGENCY NAME & ADDRESS (if different from Controlling Office)	15. SECURITY CLASS (of this report) unclassified		
	15a. DECLASSIFICATION DOWNGRADING SCHEDULE		
16. DISTRIBUTION STATEMENT (of this Report)			
17. DISTRIBUTION STATEMENT (of the abstract entered in Block 20, if different from Report)			
18. SUPPLEMENTARY NOTES			
19. KEY WORDS (Continue on reverse side if necessary and identify by block number) Continuous Distributions of Dislocations, Nonlocal Theory, Fracture			
20. ABSTRACT (Continue on reverse side if necessary and identify by block number) A linear, nonlocal continuum theory of dislocations is developed. The field equations are given for the dislocation density and the stress fields due to continuous distribution of dislocations. Green's functions are obtained for two- and three-dimensional media & an integral formula is given for line distribution of dislocations, generalizing Peach-Koehler formula of the classical			

DD FORM 1 JAN 73 1473 EDITION OF 1 NOV 65 IS OBSOLETE

SECURITY CLASSIFICATION OF THIS PAGE (When Data Entered)

ON CONTINUOUS DISTRIBUTIONS OF DISLOCATIONS IN NONLOCAL ELASTICITY

A. Cemal Eringen
Princeton University
Princeton, NJ 08544

ABSTRACT

A linear, nonlocal continuum theory of dislocations is developed. The field equations are given for the dislocation density and the stress fields due to continuous distribution of dislocations. Green's functions are obtained for two and three-dimensional media and an integral formula is given for line distribution of dislocations generalizing Peach-Koehler formula of the classical (local) theory. Unlike the classical theory, no stress singularities occur so that self-stress and energies of dislocation loops can be calculated involving no divergences. Exact solutions given for the line and circular distributions of dislocations verify these expectations.



Accession For	
NTIS GRA&I	<input checked="" type="checkbox"/>
DTIC TAB	<input type="checkbox"/>
Unannounced	<input type="checkbox"/>
Justification	
Distribution/	
Availability Codes	
Avail and/or	
Dist	Special
All	

1. INTRODUCTION

In classical (local) theory, the displacement and stress fields due to a continuous distribution of dislocations can be calculated by means of various surface and volume integrals once the Green's functions for the dislocation density is known. To obtain the Greens function one solves partial differential equations for the stress functions. For example, the stress due to a line distribution of dislocation is given by the Peach-Koehler formula. One of the basic difficulties of this theory is that the self-stress and energies of dislocation loops possess mathematical singularities so that calculations will have to be cut-off near the lines of dislocation or the core region.

In several previous papers (cf. 1-4), I have shown that the solutions for the single dislocation involve no stress or energy singularities at the core regions. Moreover, calculated theoretical strengths of solids and dispersion curves for plane waves agree quite well with those known from the atomic lattice dynamics and/or experiments. Therefore, it is expected that the nonlocal theory will eliminate the classical singularities for the self stress and energies of dislocation loops. The *raison d'être* of the present paper stems from the need to develop a theory of continuous distribution of dislocations based on the nonlocal elasticity, that can hopefully predict the physical phenomena in the microscopic and atomic scales where classical theory fails to apply.

In Section 2, I summarize the basic equations of the nonlocal theory of linear isotropic elastic solids. In Section 3, I develop

the field equations for the continuous distribution of dislocations. Green tensors for the Beltrami and Airy stress functions for solids of infinite extends are obtained in Section 4. The stress fields are given by a volume integral generalizing celebrated Peach-Koehler formula of the classical theory. In Section 5, I derive explicit expressions of the stress fields for the uniform distributions of screw dislocations along a straight line segment and along a circular loop. The exact formulas obtained for these cases contain no singularities, justifying our expectation. Section 6 contains calculations of stress fields and a discussion of the reduction of yield stress with the dislocation pile-up.

The simplicity and the aesthetics of these results, I believe, justifiably indicate the power and the potential of the nonlocal theory in the treatment of the physical phenomena with characteristic lengths in the microscopic and atomic scales.

2. BASIC EQUATIONS

The linear theory of nonlocal elasticity is based on Cauchy's equations of motion

$$(2.1) \quad t_{kl,k} + \rho(f_l - \ddot{u}_l) = 0$$

and the integral constitutive equations

$$(2.2) \quad t_{kl}(x,t) = \int c_{klmn}(x'-x) e_{mn}(x') dv(x')$$

where t_{kl} , ρ , f_l , u_l and e_{kl} are respectively, the stress tensor, the mass density, the body force density, the displacement vector and the linear strain tensor defined by

$$(2.3) \quad e_{k\ell} = \frac{1}{2} (u_{k,\ell} + u_{\ell,k})$$

In (2.2), $c_{k\ell mn}$ is a function of the vector $\underline{x}' - \underline{x}$ and the integral is over the volume of the entire body. Consequently, the stress at a point \underline{x} depends on the strain at all points \underline{x}' of the body.

Throughout this paper, we employ rectangular coordinates x_k , $k=1,2,3$, and use the usual summation convention on repeated indices. Also a superposed dot indicates the time rate and an index followed by a comma partial differentiation with respect to x_k , e.g.

$$\dot{u}_k = \frac{\partial u_k}{\partial t}, \quad u_{k,\ell} = \frac{\partial u_k}{\partial x_\ell}$$

The kernel $c_{k\ell mn}$ possesses certain symmetry regulations and it depends on a length scale. For isotropic solids (2.2) takes the simple form

$$(2.4) \quad \tau_{k\ell}(\underline{x}, t) = \int_V \alpha(|\underline{x}' - \underline{x}|) \sigma_{k\ell}(\underline{x}') dv(\underline{x}')$$

where $\sigma_{k\ell}$ is the classical (local) stress tensor given by the Hooke's law

$$(2.5) \quad \sigma_{k\ell} = \lambda e_{rr} \delta_{k\ell} + 2\mu e_{k\ell}$$

and α is a function of the distance $|\underline{x}' - \underline{x}|$. It also depends on a length scale ϵ that may be taken to be proportional to an internal characteristic length a

$$(2.6) \quad \epsilon = e_0 a$$

where e_0 is a non-dimensional material property which may be determined by one experiment or comparison with calculations based on lattice dynamics³⁻⁵.

The internal characteristic length a may be taken as the lattice parameter

for single crystals, granular distance for amorphous materials, and the average distance for fiber composites. As $\epsilon \rightarrow 0$, $\tau_{k\ell} \rightarrow \sigma_{k\ell}$ and (2.4) reduces to Hooke's law $\tau_{k\ell} = \sigma_{k\ell}$. Thus, $\alpha(|\underline{x}' - \underline{x}|)$ is a Dirac delta sequence.

In several previous papers^{3,5}, I have discussed the properties of $\alpha(|\underline{x}' - \underline{x}|)$ and gave representations which lead to excellent agreement with known atomic calculations on dispersions of waves^{3,6} in the entire Brillouin zone and on theoretical strengths of solids.⁴ For example, for the two-dimensional case, an appropriate kernel is

$$(2.7) \quad \alpha(|\underline{x}|, \epsilon) = (2\pi\epsilon^2)^{-1} K_0(\sqrt{\underline{x} \cdot \underline{x}}/\epsilon)$$

which satisfies the equation

$$(2.8) \quad (1 - \epsilon^2 \nabla^2) \alpha = \delta(|\underline{x}' - \underline{x}|)$$

vanishing at infinity. In fact, for the infinite solid, it can be shown that α is the Green's function satisfying (2.8) in three-dimensions also.

Using (2.8) in (2.4), we obtain

$$(2.9) \quad (1 - \epsilon^2 \nabla^2) \tau_{k\ell} = \sigma_{k\ell}$$

By means of (2.1) and (2.9), we then find that

$$(2.10) \quad (\lambda + \mu) u_{k,k\ell} + \mu v_{\ell,kk} + (1 - \epsilon^2 \nabla^2) (\rho f_{\ell} - \rho \ddot{u}_{\ell}) = 0$$

These are the partial differential equations for u_k , replacing Navier's equations of classical elasticity. For the static case and vanishing body forces, this reduces classical Navier's equation

$$(2.11) \quad (\lambda + \mu) u_{k,k\ell} + \mu u_{\ell,kk} = 0$$

However, note that the stress field is determined by solving (2.9) under appropriate boundary conditions.

3. CONTINUOUS DISTRIBUTION OF DISLOCATIONS

Continuous distribution of dislocations is envisaged as follows: A small neighborhood $n(\underline{x})$ of \underline{x} in a distorted body of volume V , may be relaxed to a small neighborhood $N(\underline{X})$ of the image of \underline{x} of \underline{x} , in an undistorted (or a natural) configuration V , by releasing constraints exerted to $n(\underline{x})$ by the rest of the body. A line element $d\underline{x}$ at $\underline{x} \in n(\underline{x})$ can be expressed in terms of its image $d\underline{X} \in N(\underline{X})$ by

$$(3.1) \quad d\underline{x} = \underline{A} d\underline{X}$$

where $\underline{A}(\underline{X})$ is called the elastic distortion. It is assumed that $\underline{A}(\underline{X})$ is continuously differentiable and possesses unique inverse so that

$$(3.2) \quad d\underline{X} = \underline{A}^{-1} d\underline{x}$$

Consider a smooth surface S in V bounded by a closed curve C . The true Burger's vector \underline{b} of the dislocations piercing through S is defined by

$$(3.3) \quad \underline{b} = \oint_C d\underline{X} = \oint_C \underline{A}^{-1} dx = \int_S \underline{a} \cdot \underline{n} ds$$

where \underline{n} is the unit normal to S , the positive sense of C being counter-clockwise when sighting along \underline{n} . Here \underline{a} is called the true dislocation density

$$(3.4) \quad \underline{a} = \text{curl } \underline{A}^{-1} \quad \text{or} \quad a_{jk} = \epsilon_{kmn} A_{jn,m}^{-1}$$

For small distortions, we can write

$$(3.5) \quad A_{kl} = \delta_{kl} + \alpha_{kl}, \quad A_{kl}^{-1} = \delta_{kl} - \alpha_{kl}$$

so that

$$(3.6) \quad a_{jk} = \epsilon_{kmn} \alpha_{jm,n}$$

From this, it follows that

$$(3.7) \quad a_{jk,k} = 0$$

The linear strain tensor e_{kl} and rotation tensor r_{kl} are given by

$$(3.8) \quad e_{kl} = \frac{1}{2} (\alpha_{kl} + \alpha_{lk}), \quad r_{kl} = \frac{1}{2} (\alpha_{kl} - \alpha_{lk})$$

The strain incompatibility is expressed by

$$(3.9) \quad \epsilon_{ijk} \epsilon_{lmn} e_{in,jm} = \eta_{kl}$$

where η_{kl} is called the incompatibility tensor and is given by

$$(3.10) \quad \eta_{kl} = \frac{1}{2} (\epsilon_{kmn} a_{nl,m} + \epsilon_{lmn} a_{nk,m})$$

All these results are well-known in classical theory (cf. Ref. [7]).

In nonlocal elasticity, the strain tensor can be solved by using (2.9) and (2.5)

$$(3.11) \quad e_{kl} = \frac{1}{2\mu} (1 - \epsilon^2 \nabla^2) (t_{kl} - \frac{\nu}{1+\nu} t_{rr} \delta_{kl})$$

where $\nu = \lambda/2(\lambda+\mu)$ is the Poisson's ratio. Substituting (3.11) into (3.9), we obtain

$$(3.12) \quad (1 - \epsilon^2 \nabla^2) [\nabla^2 t_{kl} + \frac{1}{1+\nu} (t_{rr,k\ell} - \nabla^2 t_{rr} \delta_{kl})] = 2\mu \eta_{kl}$$

These equations must be solved under the conditions of equilibrium

$$(3.13) \quad t_{kl,k} = 0$$

Following Kröner's approach⁸, modifying the Beltrami solution of (3.13), we take

$$(3.14) \quad \tau_{k\ell}/2\mu = \nabla^2 \chi_{k\ell} + \frac{1}{1-\nu} (\chi_{rr,k\ell} - \nabla^2 \chi_{rr} \delta_{k\ell})$$

where the symmetric stress function $\chi_{k\ell}$ is subject to

$$(3.15) \quad \chi_{k\ell,l} = 0.$$

Substituting (3.14) into (3.12), we obtain

$$(3.16) \quad (1 - \epsilon^2 \nabla^2) \nabla^4 \chi_{k\ell} = \eta_{k\ell}$$

Thus, given the dislocation density function $a_{k\ell}$, through (3.10), we calculate $\eta_{k\ell}$. The solution of (3.16) gives $\chi_{k\ell}$ and (3.14) the stress field.

Equation (3.16) is singularly perturbed and as expected in the limit $\epsilon \rightarrow 0$, (3.16) reduces to the classical equation for $\chi_{k\ell}$.

To obtain the solution of (3.16), we must find the Green's Tensor $G_{k\ell mn}(\underline{x}, \underline{\xi})$ which satisfies

$$(3.17) \quad (1 - \epsilon^2 \nabla^2) \nabla^4 G_{k\ell mn} = \delta(\underline{x} - \underline{\xi}) \delta_{k\ell} \delta_{mn}.$$

The solution of (3.16) is then given by

$$(3.18) \quad \chi_{k\ell} = \int_V G_{k\ell mn}(\underline{x}, \underline{\xi}) \eta_{mn}(\underline{\xi}) dv(\underline{\xi})$$

subject to supplementary conditions (3.15).

4. GREEN'S TENSORS AND STRESS FIELDS

Here we determine Green's tensors for two and three-dimensional bodies of infinite extends.

(i) Three-Dimensional Infinite Space

The operator ∇^2 is invariant under rotations of coordinates. For the infinite space, we look for a solution of (3.17) which depends on $|\underline{x}-\underline{\xi}|$ only, i.e.,

$$(4.1) \quad (1 - \epsilon^2 \nabla^2) \nabla^4 G = \delta(\underline{x} - \underline{\xi})$$

Since the operators $1 - \epsilon^2 \nabla^2$ and ∇^4 are commutative, we set

$$(4.2) \quad \begin{aligned} (1 - \epsilon^2 \nabla^2) G &= H, \\ \nabla^4 H &= \delta(|\underline{x}-\underline{\xi}|) \end{aligned}$$

For the infinite space, H is given by

$$(4.3) \quad H = - |\underline{x} - \underline{\xi}| / 8\pi$$

In spherical coordinates using

$$\nabla^2 = \frac{1}{r^2} \left(r^2 \frac{d}{dr} \right)$$

we obtain for G :

$$(4.4) \quad G(|\underline{x}-\underline{\xi}|) = \frac{\epsilon^2 G_0}{4\pi|\underline{x}-\underline{\xi}|} \exp(-|\underline{x}-\underline{\xi}|/\epsilon) - \frac{|\underline{x}-\underline{\xi}|}{8\pi}, \quad \epsilon \neq 0$$

$$(4.5) \quad G(|\underline{x}-\underline{\xi}|) = -\frac{|\underline{x}-\underline{\xi}|}{8\pi}, \quad \epsilon = 0$$

Here G_0 is an arbitrary constant which may be chosen $G_0 = 1$ to render t_{kk} regular at $\underline{x} = \underline{\xi}$. The solution of (3.16) for the infinite solid is given by

$$(4.6) \quad \chi_{k\ell} = \int_V G(|\underline{x}-\underline{\xi}|) \eta_{k\ell}(\underline{\xi}) dv(\underline{\xi})$$

which satisfies the conditions (3.15) on account of (3.7) and (3.10). If we substitute from (3.10), this gives

$$(4.7) \quad \chi_{k\ell}(\underline{x}) = \frac{1}{2} \epsilon_{ijk} \int_V a_{j\ell}(\underline{\xi}) \frac{\partial G}{\partial x_i} dv(\underline{\xi}) + \frac{1}{2} \epsilon_{ij\ell} \int_V a_{jk}(\underline{\xi}) \frac{\partial G}{\partial x_i} dv(\underline{\xi})$$

where we used the Green-Gauss theorem and set a surface term at infinity to zero.

From (4.7), one can obtain various special cases involving surface and line distributions of dislocations. For example, for a line distribution of dislocation along a closed curve C , we obtain

$$(4.8) \quad \chi_{k\ell} = \frac{1}{2} \epsilon_{kij} b_j \oint_C \frac{\partial G}{\partial x_i} d\ell_\ell + \frac{1}{2} \epsilon_{\ell ij} b_j \oint_C \frac{\partial G}{\partial x_i} d\ell_k$$

where b_j is the Burger's vector per unit length of C and $d\ell_i$ is the element of the arc.

Upon substituting (4.8) into (3.14), we obtain the stress field due to a line distribution of dislocations

$$(4.9) \quad \tau_{k\ell}/2\mu = \frac{1}{2} \epsilon_{rij} b_j \oint_C [\nabla^2 G_{,i} (\delta_{rk} d\ell_\ell + \delta_{r\ell} d\ell_k) + \frac{2}{1-\nu} (G_{,k\ell i} - \nabla^2 G_{,i} \delta_{k\ell}) d\ell_r]$$

This result is identical to the Peach and Koehler⁷ formula with modification that here G is the nonlocal Green's function (4.4) with $\epsilon \neq 0$. As we shall see, the most interesting new feature of (4.9) is that, with G given by (4.4), at a point on the dislocation line C , the stress is finite so that the self-stress and energies of dislocation loops can be calculated, free of infinities.

(ii) Two-Dimensional Infinite Plane

In the case of the plane strain, introducing the Airy's stress function $\phi(x_1, x_2)$ by

$$(4.10) \quad \tau_{11} = \phi_{,22}, \quad \tau_{22} = \phi_{,11}, \quad \tau_{12} = -\phi_{,12}$$

we obtain an equation replacing (3.16)

$$(4.11) \quad (1 - \epsilon^2 \nabla^2) \nabla^4 \phi = 2\mu \eta$$

where

$$(4.12) \quad \eta = \eta_{33} = a_{23,1} - a_{13,2}$$

$$a_{23} = \alpha_{21,2} - \alpha_{22,1}, \quad a_{13} = \alpha_{11,2} - \alpha_{12,1}$$

depend on x_1 and x_2 only.

Green's function in this case, can be found similar to decomposition (4.2) with ∇^2 given by

$$\nabla^2 = \frac{1}{r} \frac{d}{dr} \left(r \frac{d}{dr} \right)$$

Hence,

$$(4.13) \quad G(|\underline{x}-\underline{\xi}|) = \frac{G_0}{2\pi} K_0(|\underline{x}-\underline{\xi}|/\epsilon) - \frac{(\underline{x}-\underline{\xi}) \cdot (\underline{x}-\underline{\xi})}{8\pi\epsilon^2} \ln(|\underline{x}-\underline{\xi}|/\epsilon), \quad \epsilon \neq 0$$

$$(4.14) \quad G(|\underline{x}-\underline{\xi}|) = -\frac{(\underline{x}-\underline{\xi}) \cdot (\underline{x}-\underline{\xi})}{8\pi} \ln(|\underline{x}-\underline{\xi}|), \quad \epsilon = 0$$

where $K_0(z)$ is the modified Bessel's function. Again, we take $G_0 = 1$ to render t_{kk} regular at $\underline{x} = \underline{\xi}$.

Airy's stress function is obtained to be

$$(4.15) \quad \phi(\underline{x}) = 2\mu \int_S [G_{,1} a_{23}(\underline{\xi}) - G_{,2} a_{13}(\underline{\xi})] ds$$

where we used the Green-Gauss theorem and set a line integral to zero at infinity. For a line distribution of dislocations in the $x_3 = 0$ -plane, we obtain

$$(4.16) \quad \phi(\underline{x}) = -2\mu \int_C [G_{,1} b_2(\underline{\xi}) d\xi_1 + G_{,2} b_1(\underline{\xi}) d\xi_2]$$

The stress field follows from (4.10)

$$(4.17) \quad \begin{aligned} \tau_{11} &= -2\mu \int_C (G_{,122} b_2 d\xi_1 + G_{,222} b_1 d\xi_2), \\ \tau_{22} &= -2\mu \int_C (G_{,111} b_2 d\xi_1 + G_{,211} b_1 d\xi_2), \\ \tau_{12} &= 2\mu \int_C (G_{,112} b_2 d\xi_1 + G_{,212} b_1 d\xi_2) \end{aligned}$$

(iii) Anti-Plane Strain

In the case of anti-plane strain, equations of equilibrium are satisfied if

$$(4.18) \quad \tau_{13} = \frac{\partial \phi}{\partial x_2}, \quad \tau_{23} = -\frac{\partial \phi}{\partial x_1}$$

and we obtain

$$(4.19) \quad (1 - \epsilon^2 \nabla^2) \nabla^2 \phi = \mu a_{33}$$

where

$$(4.20) \quad a_{33} = \alpha_{31,2} - \alpha_{32,1}$$

Green's function for this case, is obtained to be

$$(4.21) \quad G(|\underline{x}-\underline{\xi}|) = -\frac{1}{2\pi} [\ln(|\underline{x}-\underline{\xi}|/\epsilon) + K_0(|\underline{x}-\underline{\xi}|/\epsilon)], \quad \epsilon \neq 0$$

$$(4.22) \quad G(|\underline{x}-\underline{\xi}|) = -\frac{1}{2\pi} \ln(|\underline{x}-\underline{\xi}|) \quad \epsilon = 0$$

The stress field is given by

$$(4.23) \quad \begin{aligned} t_{13} &= \mu \int_S G_{,2} b(\underline{\xi}) d\xi_1 d\xi_2 \\ t_{23} &= -\mu \int_S G_{,1} b(\underline{\xi}) d\xi_1 d\xi_2 \end{aligned}$$

For a line distribution of dislocations on the plane $x_3 = 0$, we have

$$(4.24) \quad t_{13} = \mu \int_C G_{,2} b(\underline{\xi}) d\ell, \quad t_{23} = -\mu \int_C G_{,1} b(\underline{\xi}) d\ell$$

In plane polar coordinates (r, θ) , the stress field is given by

(4.25)

$$t_{zr} = \mu \int_C \frac{1}{r} \frac{\partial G}{\partial \theta} B(\xi) d\ell$$

$$t_{z\theta} = -\mu \int_C \frac{\partial G}{\partial r} b(\xi) d\ell$$

5. UNIFORM DISTRIBUTIONS OF SCREWS

Here we calculate the stress field for two different uniform line distributions of screw dislocations:

(i) Screw Dislocation Along a Straight Line

Consider a line distribution of screw dislocations of constant Burger's vector along a straight line segment $|x_1| \leq \ell$, $x_2 = x_3 = 0$. Green's function is given by

$$(5.1) \quad G(|x-\xi|) = -\frac{1}{2\pi} [\ln(\rho/\epsilon) + K_0(\rho/\epsilon)]$$

where

$$(5.2) \quad \rho = [(x_1 - \xi)^2 + x_2^2]^{1/2}$$

We can evaluate t_{23} given by (4.24) immediately since

$$G_{,1} \equiv \partial G / \partial x_1 = -\partial G / \partial \xi$$

and we have

$$(5.3) \quad t_{23} = \mu b [G(|\ell - \xi|) - G(|\ell + \xi|)]$$

Explicitly,

$$(5.4) \quad t_{23} = -\frac{\mu b}{2\pi} \left\{ \ln \left[\frac{(x_1 - \ell)^2 + x_2^2}{(x_1 + \ell)^2 + x_2^2} \right]^{\frac{1}{2}} + K_0 \left[\frac{\sqrt{(x_1 - \ell)^2 + x_2^2}}{\epsilon} \right] \right. \\ \left. - K_0 \left[\frac{\sqrt{(x_1 + \ell)^2 + x_2^2}}{\epsilon} \right] \right\}$$

Along the line of screws, this gives

$$(5.5) \quad t_{23}(x_1, 0) = -\frac{\mu b}{2\pi} \left\{ \ln \left(\frac{|x_1 - \ell|}{|x_1 + \ell|} \right) + K_0(|x_1 - \ell|/\epsilon) - K_0(|x_1 + \ell|/\epsilon) \right\}$$

Calculation of t_{13} is complicated. However, it is easy to see that

$$(5.6) \quad t_{13}(x_1, 0) = 0$$

Unlike the classical case, $t_{23}(x_1, 0)$ has no singularity at the end points $x_1 = \pm \ell$ of the screw line. In fact, we have

$$(5.7) \quad t_{23}(\pm \ell, 0) = \pm \frac{\mu}{2\pi} [\ln(\ell/\epsilon) + K_0(2\ell/\epsilon)]$$

for $\ell/\epsilon \gg 1$, we have the asymptotic value

$$(5.8) \quad t_{23}(\pm \ell, 0) = \pm \frac{\mu b}{2\pi} [\ln(\ell/\epsilon) + (\pi\epsilon/4i)^{\frac{1}{2}} \exp(-2\ell/\epsilon)]$$

where the second term can also be neglected as compared to the first one for large ϵ .

(ii) Uniform Distribution of Screw Dislocations Along a Circle

Suppose that in the plane $x_3 = 0$, there is a uniformly distributed screw dislocations along a circle of radius R . In plane polar coordinates, we have

$$(5.9) \quad \begin{aligned} x_1 &= r \cos \theta, & x_2 &= r \sin \theta, \\ \xi_1 &= R \cos \phi, & \xi_2 &= R \sin \phi, \\ |\underline{x} - \underline{\xi}| &= [r^2 + R^2 - 2rR \cos(\phi - \theta)]^{1/2} \end{aligned}$$

Greens' function is given by

$$(5.10) \quad G(|\underline{x} - \underline{\xi}|) = -\frac{1}{2\pi} [\ln(|\underline{x} - \underline{\xi}|/\epsilon) + K_0(|\underline{x} - \underline{\xi}|/\epsilon)]$$

To calculate the stress field t_{zr} and $t_{z\theta}$ we must evaluate two integrals

$$(5.11) \quad I_1 = \int_{\theta}^{2\pi+\theta} \ln \left\{ \frac{1}{\epsilon} [r^2 + R^2 - 2rR \cos(\phi - \theta)]^{1/2} \right\} d\phi$$

$$(5.12) \quad I_2 = \int_{\theta}^{2\pi+\theta} K_0 \left\{ \frac{1}{\epsilon} [r^2 + R^2 - 2rR \cos(\phi - \theta)]^{1/2} \right\} d\phi$$

To evaluate (5.11), we write

$$(5.13) \quad \ln \left\{ \frac{1}{\epsilon} [r^2 + R^2 - 2rR \cos(\phi - \theta)]^{\frac{1}{2}} \right\} = \ln \left(\frac{|r+R|}{\epsilon} \right) \\ + \ln (1 - \alpha_0 \cos^2 \frac{\psi}{2})^{\frac{1}{2}}$$

where

$$(5.14) \quad \alpha_0 = 4rR/(r+R)^2, \quad \phi - \theta = \psi$$

The second term in (5.13) can be integrated by writing $x = \cos(\psi/2)$ and consulting Ref. 9, p. 562, No. 38. Consequently

$$(5.15) \quad I_1 = \begin{cases} 2\pi \ln(r/\epsilon) & r > R \\ 2\pi \ln(R/\epsilon) & r < R \end{cases}$$

To evaluate I_2 , we employ the integrals 6.684 on p. 741 of Ref. 9, and note that

$$K_0(z) = \frac{\pi i}{2} [J_0(iz) + iN_0(iz)]$$

where J_0 and N_0 are zero order Bessel functions. The result is

$$(5.16) \quad I_2 = \begin{cases} 2\pi I_0(R/\epsilon) K_0(r/\epsilon), & r > R \\ 2\pi I_0(r/\epsilon) K_0(R/\epsilon), & r < R \end{cases}$$

Consequently,

$$(5.17) \quad I = \int_0^{2\pi} G(|x-\xi|) d\ell = - \begin{cases} \ln(r/\epsilon) + I_0(R/\epsilon) K_0(r/\epsilon), & r > R \\ \ln(R/\epsilon) + I_0(r/\epsilon) K_0(R/\epsilon), & r < R \end{cases}$$

The stress field is given by

$$(5.18) \quad \tau_{zr} = \mu \frac{bR}{r} \frac{\partial I}{\partial \theta} = 0,$$

$$\tau_{z\theta} = \mu b R \frac{\partial I}{\partial r} = \begin{cases} \mu b \frac{R}{\epsilon} \left[\frac{\epsilon}{r} - I_0(R/\epsilon) K_1(r/\epsilon) \right], & r > R \\ \mu b \frac{R}{\epsilon} I_1(r/\epsilon) K_0(R/\epsilon), & r < R \end{cases}$$

In the special case when $R \rightarrow 0$ and $2\pi Rb = b_0$, we obtain

$$(5.19) \quad \tau_{z\theta} = \frac{\mu b_0}{2\pi r} \left[1 - \frac{r}{\epsilon} K_1(r/\epsilon) \right]$$

which is identical to our previous result for a single screw dislocation having Burger's factor b_0 .

6. STRESS DISTRIBUTIONS

Here, I present some numerical results on the stress distributions for the cases discussed in Section 5 and establishes a fracture criteria based on the maximum shear stress.

(i) Single Screw: The shear stress given by (5.19) may be expressed in non-dimensional form:

$$(6.1) \quad T_{\theta}(\rho) = (2\pi\epsilon/\mu b) t_{z\theta} = \rho^{-1} [1 - \rho K_1(\rho)]$$

where

$$(6.2) \quad \rho = r/\epsilon$$

The stress field given by (6.1) is displayed graphically in Fig. 1. It has no singularity at $\rho = 0$. In fact, $T_{\theta}(\rho)$ vanishes at $\rho = 0$ in contradiction to the classical elasticity solution which gives infinite stress at $\rho = 0$. The maximum stress occurs at $\rho = 1.1$ and is given by

$$(6.3) \quad t_{z\theta \max} = 0.3993 \frac{b}{2\pi\epsilon}$$

If we write $h = \epsilon/0.3993$, this agrees with Frenkel's estimate of the theoretical strength of single crystals, based on atomic considerations (cf., Kelly [10], p. 12). In fact, if we use $\epsilon = e_0 a = 0.39 a$, which is obtained on the basis of matching of the dispersion curve predicted by non-local elasticity and the Born-Kármán lattice model³, we find for the single aluminum crystal

$$(6.4) \quad \tau^c/\mu = 0.12 \quad \{A1: [111] \langle 1\bar{1}0 \rangle\}$$

This is very close to the theoretical strength $\tau_y/\mu = 0.11$ based on atomic models.

(ii) Screw Dislocations Along a Straight Line Segment: Even single crystals contain many dislocations. For a uniform distribution of screws along a line segment $|x_1| < \ell$, $x_2 = x_3 = 0$, the shear stress given by (5.5) may be written in non-dimensional form

$$(6.5) \quad T_2 = \tau_{23}/\tau_d = \ln \frac{|x+1|}{|x-1|} + K_0(\gamma|x+1|) - K_0(\gamma|x-1|)$$

where

$$(6.6) \quad \tau_d = \mu b/2\pi = \mu b_0 N/2\pi\ell, \quad x = x_1/\ell, \quad \gamma = \ell/\epsilon$$

Here b_0 is the atomic Burger's vector and N is the total number of dislocations over a distance ℓ .

The distribution of the shear stress (6.5) as a function of x is shown in Fig. 2 for various values of γ . Behavior of T_2 is governed basically by the first term in (6.5) except near $x=1$. At $x=1$, we have

$$(6.7) \quad \tau_{21}(1) = \frac{\mu b_0 N}{2\pi\epsilon} \frac{\ln \gamma}{\gamma}$$

The value of $T_2(1)$ is very close to the maximum stress for $\gamma \geq 3$

(cf. Table 1). For a single atomic dislocation according to (6.3), we have the theoretical strength

$$(6.8) \quad \tau_y^c = 0.3993 \frac{\mu b_0}{2\pi E}$$

Combining (6.7) and (6.8), we obtain

$$(6.9) \quad \tau_y^d / \tau_y^c = \frac{N}{0.3993} \frac{\ln \gamma}{\gamma}$$

where we set $\tau_{23}^d(1) = \tau_y^d$ = the yield stress for the distributed dislocations. This gives the shear stress reduction due to the presence of $2N$ dislocations distributed uniformly along a straight line segment of length $2l$. Since $\tau_y^d \leq \tau_y^c$, the maximum number of dislocations is given by

$$(6.10) \quad N_{\max} = 0.3993 \frac{\gamma}{\ln \gamma}$$

For $\gamma = 4.02 \times 10^4$, this gives $N_{\max} = 1514$, which may be conservative since the distribution is not generally uniform but in an inverse pile-up configuration¹¹.

(iii) Uniform Distribution of Screws Along a Circle: In this case, the stress fields given by (5.18) may be expressed in non-dimensional form

$$(6.11) \quad T = \tau_{23}^e / \mu b = \begin{cases} \frac{1}{c} - \kappa I_0(\kappa) K_1(\kappa c) , & \rho > 1 \\ \kappa K_0(\kappa) I_1(\kappa c) , & \rho < 1 \end{cases}$$

where

$$(6.12) \quad \rho = r/R, \quad \kappa = R/\epsilon$$

T as a function of ρ , for various values of κ , is displayed in Fig. 3. For value of $\kappa \geq 50$, the maxima of T occurs near $\rho = 1$. The locations and values of T_{\max} are given in Table 2.

If b_0 is the atomic Burger's vector, then

$$(6.13) \quad 2\pi R b = N b_0$$

where N is the number of dislocations on the dislocation circle with radius R . Using (6.8), (6.12) and (6.13), we obtain

$$(6.14) \quad t_{z\theta}/t_y^c = \frac{N}{0.3993 \kappa} T$$

According to Fig. 3, $0.324 \leq T_{\max} \leq 1$. Consequently,

$$(6.15) \quad N/1.2 \kappa \lesssim t_y^d/t_y^c \lesssim N/0.4 \kappa$$

For perfect crystals with $\epsilon = 0.39 a$, this gives approximately

$$(6.16) \quad 0.3 Na/R \lesssim t_y^d/t_y^c \lesssim Na/R$$

indicating reduction of the yield stress with the presence of large number dislocations uniformly distributed along a circle of radius R .

Table 1 : Maximum Shear Stress and its Location

(Line Segment)

$\gamma =$	1	1.5	2	3	5	10
$x =$	1.446	1.197	1.103	1.039	1.000	1.000
$T_{2\max} =$	0.7478	1.0501	1.3008	1.6851	2.3026	2.9957

Table 2 : Maximum Shear Stress and its Location

(Circle)

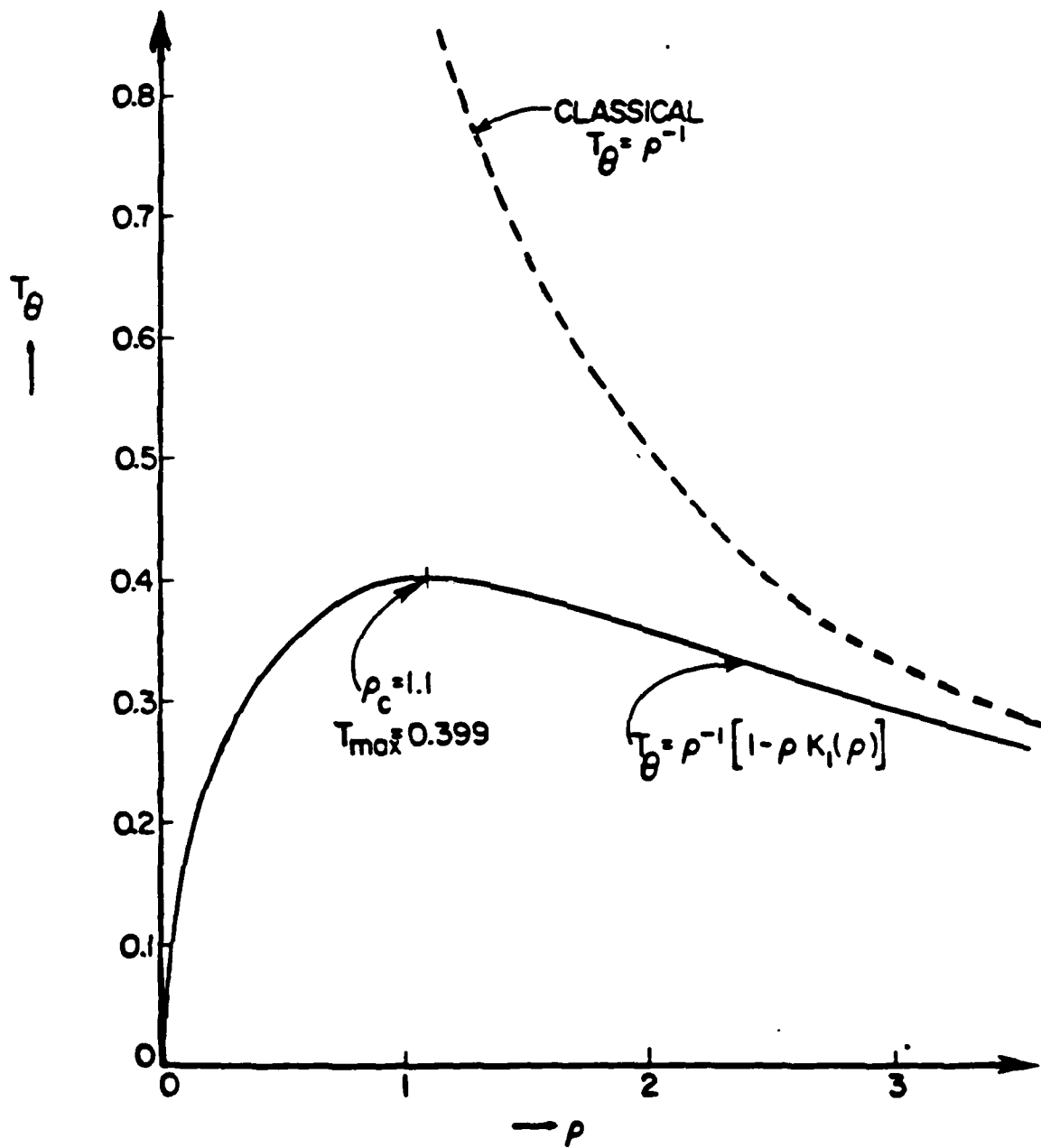
$\kappa =$	1	2	3	5	10	50
$\rho =$	1.8	1.5	1.4	1.3	1.2	1.1
$T_{\max} =$	0.3243	0.4836	0.5688	0.6630	0.7688	0.9058

REFERENCES

- [1] A.C. Eringen, J. Phys. D10, 671 (1977).
- [2] A.C. Eringen, In. J. Engng. Sci., 15, 177 (1977).
- [3] A.C. Eringen, J. Appl. Phys., 54, 4703 (1983).
- [4] A.C. Eringen, J. Appl. Phys., "Interaction of Dislocation with a Crack," scheduled for publication.
- [5] A.C. Eringen, Nonlinear Equations of Physics and Mathematics, edited by A.O. Barut (Reidel, Dordrecht-Holland, 1979), p. 271.
- [6] N. Ari and A.C. Eringen, Cryst. Lattice Defects, Amorph. Mat., 10, 33 (1983).
- [7] R.W. Lardner, Mathematical Theory of Dislocations and Fracture, University of Toronto Press, 1974, Ch. 8.
- [8] E. Kröner, Z. Phys., 139, 175 (1954).
- [9] I.S. Gradshteyn & I.M. Ryzhik, Table of Integrals Series and Products, Academic Press, 1956.
- [10] A. Kelly, Strong Solids, p. 12, Oxford, 1956.
- [11] S.M. Ohr and S.J. Chang, "Direct Observations of Crack Tip Dislocation Behavior During Tensile and Cyclic Deformation," Tech. Rep. Oak Ridge National Laboratory.

ACKNOWLEDGEMENT

This work was supported by ONR. The author is indebted to Dr. Basdekas for his encouragement and enthusiasm. My thanks go to Mr. D. Tao for some computer work.



NON-DIMENSIONAL HOOP STRESS FOR SCREW DISLOCATION

FIGURE 1

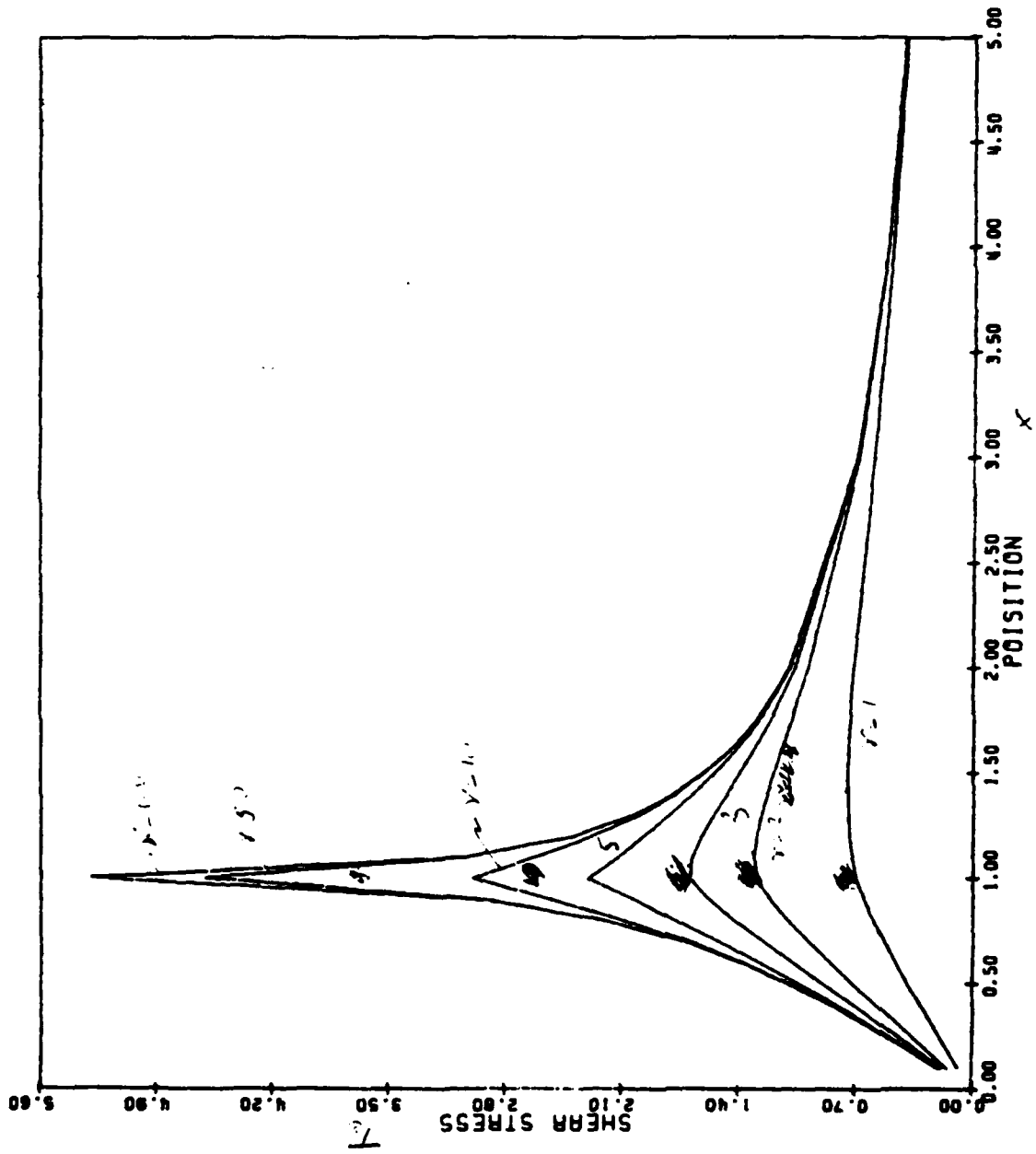


Fig. 3 SHEAR STRESS DISTRIBUTION (Line Segment)

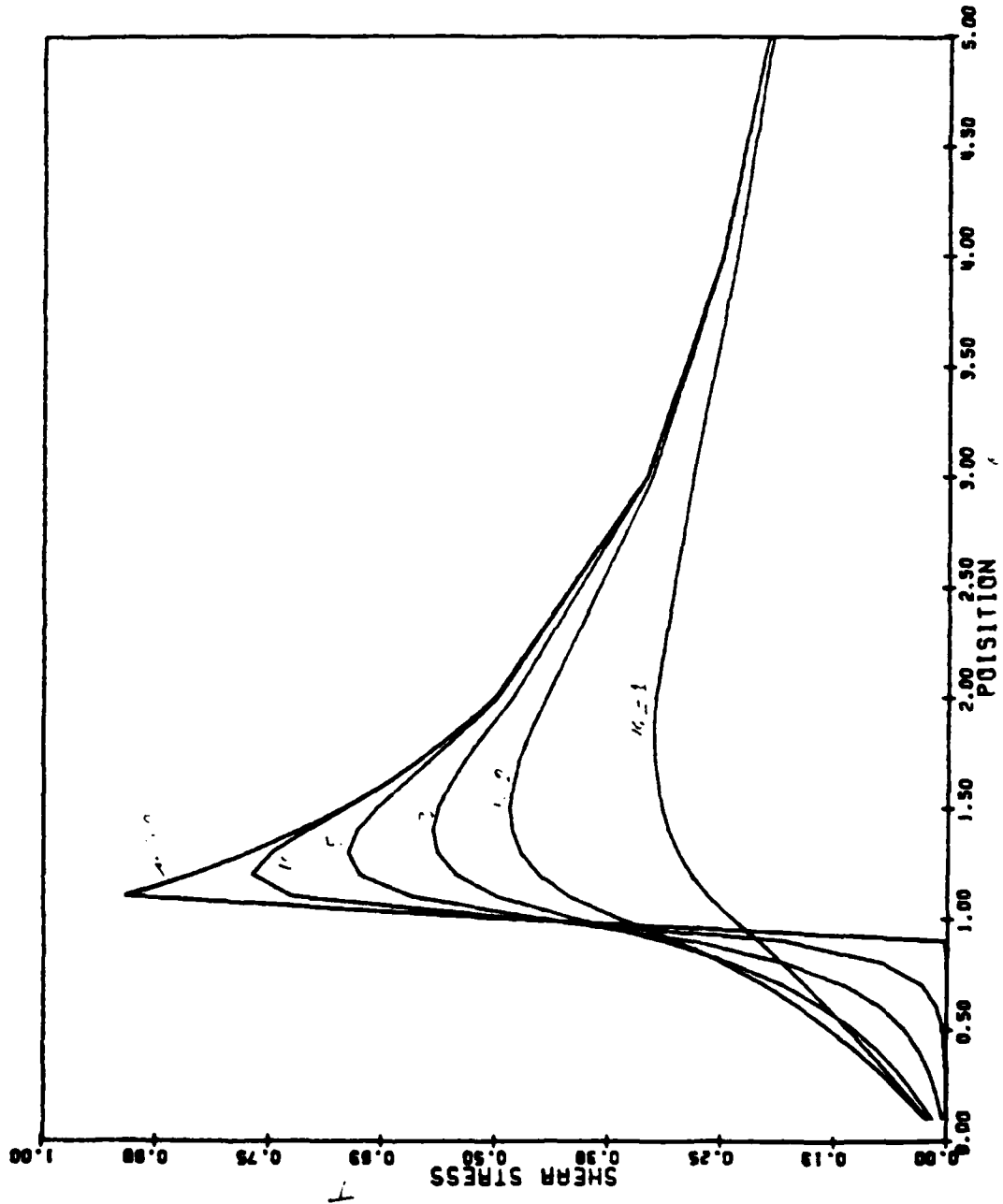


FIG. 1. SHEAR STRESS DISTRIBUTION (for various values of μ)

474:NP:716:lab
78u474-619

Part 1 - Government
Administrative and Liaison Activities

Office of Naval Research
Department of the Navy
Arlington, Virginia 22217
Attn: Code 474 (2)
Code 471
Code 200

Director
Office of Naval Research
Eastern/Central Regional Office
666 Summer Street
Boston, Massachusetts 02210

Director
Office of Naval Research
Branch Office
536 South Clark Street
Chicago, Illinois 60605

Director
Office of Naval Research
New York Area Office
715 Broadway - 5th Floor
New York, New York 10003

Director
Office of Naval Research
Western Regional Office
1030 East Green Street
Pasadena, California 91106

Naval Research Laboratory (6)
Code 2627
Washington, D.C. 20375

Defense Technical Information Center (12)
Cameron Station
Alexandria, Virginia 22314

Navy

Undersea Explosion Research Division
Naval Ship Research and Development
Center
Norfolk Naval Shipyard
Portsmouth, Virginia 23709
Attn: Dr. E. Palmer, Code 177

Navy (Con't.)

Naval Research Laboratory
Washington, D.C. 20375
Attn: Code 8400
8410
8430
8440
6300
6390
6380

David W. Taylor Naval Ship Research
and Development Center
Annapolis, Maryland 21402
Attn: Code 2740
28
281

Naval Weapons Center
China Lake, California 93555
Attn: Code 4062
4520

Commanding Officer
Naval Civil Engineering Laboratory
Code L31
Port Hueneme, California 93041

Naval Surface Weapons Center
White Oak
Silver Spring, Maryland 20910
Attn: Code R-10
G-402
K-82

Technical Director
Naval Ocean Systems Center
San Diego, California 92152

Supervisor of Shipbuilding
U.S. Navy
Newport News, Virginia 23607

Navy Underwater Sound
Reference Division
Naval Research Laboratory
P.O. Box 8337
Orlando, Florida 32806

Chief of Naval Operations
Department of the Navy
Washington, D.C. 20350
Attn: Code OP-098

474:NP:716:lab
78u474-619

Navy (Con't.)

Strategic Systems Project Office
Department of the Navy
Washington, D.C. 20376
Attn: MSP-200

Naval Air Systems Command
Department of the Navy
Washington, D.C. 20361
Attn: Code 5302 (Aerospace and Structures)
604 (Technical Library)
320B (Structures)

Naval Air Development Center
Warminster, Pennsylvania 18974
Attn: Aerospace Mechanics
Code 606

U.S. Naval Academy
Engineering Department
Annapolis, Maryland 21402

Naval Facilities Engineering Command
200 Stovall Street
Alexandria, Virginia 22332
Attn: Code 03 (Research and Development)
04B
045
14114 (Technical Library)

Naval Sea Systems Command
Department of the Navy
Washington, D.C. 20362
Attn: Code 05H
312
322
323
05R
32R

Navy (Con't.)

Commander and Director
David W. Taylor Naval Ship
Research and Development Center
Bethesda, Maryland 20084
Attn: Code 042

17
172
173
174
1800
1844
012.2
1900
1901
1945
1960
1962

Naval Underwater Systems Center
Newport, Rhode Island 02840
Attn: Bruce Sandman, Code 3634

Naval Surface Weapons Center
Dahlgren Laboratory
Dahlgren, Virginia 22448
Attn: Code G04
G20

Technical Director
Mare Island Naval Shipyard
Vallejo, California 94592

U.S. Naval Postgraduate School
Library
Code 0384
Monterey, California 93940

Webb Institute of Naval Architecture
Attn: Librarian
Crescent Beach Road, Glen Cove
Long Island, New York 11542

Army

Commanding Officer (2)
U.S. Army Research Office
P.O. Box 12211
Research Triangle Park, NC 27709
Attn: Mr. J. J. Murray, CRD-AA-IP

474:NP:716:lab
78u474-619

Army (Con't.)

Watervliet Arsenal
MAGGS Research Center
Watervliet, New York 12189
Attn: Director of Research

U.S. Army Materials and Mechanics
Research Center
Watertown, Massachusetts 02172
Attn: Dr. R. Shea, DRXMR-T

U.S. Army Missile Research and
Development Center
Redstone Scientific Information
Center
Chief, Document Section
Redstone Arsenal, Alabama 35809

Army Research and Development
Center
Fort Belvoir, Virginia 22060

NASA

National Aeronautics and Space
Administration
Structures Research Division
Langley Research Center
Langley Station
Hampton, Virginia 23365

National Aeronautics and Space
Administration
Associate Administrator for Advanced
Research and Technology
Washington, D.C. 20546

Air Force

Wright-Patterson Air Force Base
Dayton, Ohio 45433
Attn: AFFDL (FB)
(FBR)
(FBE)
(FBS)
AFML (MBM)

Chief Applied Mechanics Group
U.S. Air Force Institute of Technology
Wright-Patterson Air Force Base
Dayton, Ohio 45433

Air Force (Con't.)

Chief, Civil Engineering Branch
WLRC, Research Division
Air Force Weapons Laboratory
Kirtland Air Force Base
Albuquerque, New Mexico 87117

Air Force Office of Scientific Research
Bolling Air Force Base
Washington, D.C. 20332
Attn: Mechanics Division

Department of the Air Force
Air University Library
Maxwell Air Force Base
Montgomery, Alabama 36112

Other Government Activities

Commandant
Chief, Testing and Development Division
U.S. Coast Guard
1300 E Street, NW.
Washington, D.C. 20226

Technical Director
Marine Corps Development
and Education Command
Quantico, Virginia 22134

Director Defense Research
and Engineering
Technical Library
Room 3C128
The Pentagon
Washington, D.C. 20301

Dr. M. Gaus
National Science Foundation
Environmental Research Division
Washington, D.C. 20550

Library of Congress
Science and Technology Division
Washington, D.C. 20540

Director
Defense Nuclear Agency
Washington, D.C. 20305
Attn: SPSS

Other Government Activities (Con't)

Mr. Jerome Persh
Staff Specialist for Materials
and Structures
OUSDRA&E, The Pentagon
Room 3D1089
Washington, D.C. 20301

Chief, Airframe and Equipment Branch
PS-120
Office of Flight Standards
Federal Aviation Agency
Washington, D.C. 20553

National Academy of Sciences
National Research Council
Ship Hull Research Committee
2101 Constitution Avenue
Washington, D.C. 20418
Attn: Mr. A. R. Lytle

National Science Foundation
Engineering Mechanics Section
Division of Engineering
Washington, D.C. 20550

Picatinny Arsenal
Plastics Technical Evaluation Center
Attn: Technical Information Section
Dover, New Jersey 07801

Maritime Administration
Office of Maritime Technology
14th and Constitution Avenue, NW.
Washington, D.C. 20230

PART 2 - Contractors and Other Technical
Collaborators

Universities

Dr. J. Tinsley Oden
University of Texas at Austin
345 Engineering Science Building
Austin, Texas 78712

Professor Julius Miklowitz
California Institute of Technology
Division of Engineering
and Applied Sciences
Pasadena, California 91109

Universities (Con't)

Dr. Harold Liebowitz, Dean
School of Engineering and
Applied Science
George Washington University
Washington, D.C. 20052

Professor Eli Sternberg
California Institute of Technology
Division of Engineering and
Applied Sciences
Pasadena, California 91109

Professor Paul M. Naghdi
University of California
Department of Mechanical Engineering
Berkeley, California 94720

Professor A. J. Durelli
Oakland University
School of Engineering
Rochester, Missouri 48063

Professor F. L. DiMaggio
Columbia University
Department of Civil Engineering
New York, New York 10027

Professor Norman Jones
The University of Liverpool
Department of Mechanical Engineering
P. O. Box 147
Brownlow Hill
Liverpool L69 3BX
England

Professor E. J. Skudrzyk
Pennsylvania State University
Applied Research Laboratory
Department of Physics
State College, Pennsylvania 16801

Professor J. Klosner
Polytechnic Institute of New York
Department of Mechanical and
Aerospace Engineering
333 Jay Street
Brooklyn, New York 11201

Professor R. A. Schapery
Texas A&M University
Department of Civil Engineering
College Station, Texas 77843

Universities (Con't.)

Professor Walter D. Pilkey
University of Virginia
Research Laboratories for the
Engineering Sciences and
Applied Sciences
Charlottesville, Virginia 22901

Professor K. D. Willmert
Clarkson College of Technology
Department of Mechanical Engineering
Potdam, New York 13676

Dr. Walter E. Haisler
Texas A&M University
Aerospace Engineering Department
College Station, Texas 77843

Dr. Hussein A. Kamel
University of Arizona
Department of Aerospace and
Mechanical Engineering
Tucson, Arizona 85721

Dr. S. J. Fenves
Carnegie-Mellon University
Department of Civil Engineering
Schenley Park
Pittsburgh, Pennsylvania 15213

Dr. Ronald L. Huston
Department of Engineering Analysis
University of Cincinnati
Cincinnati, Ohio 45221

Professor G. C. M. Sih
Lehigh University
Institute of Fracture and
Solid Mechanics
Bethlehem, Pennsylvania 18015

Professor Albert S. Kobayashi
University of Washington
Department of Mechanical Engineering
Seattle, Washington 98105

Professor Daniel Frederick
Virginia Polytechnic Institute and
State University
Department of Engineering Mechanics
Blacksburg, Virginia 24061

Universities (Con't)

Professor A. C. Eringen
Princeton University
Department of Aerospace and
Mechanical Sciences
Princeton, New Jersey 08540

Professor E. H. Lee
Stanford University
Division of Engineering Mechanics
Stanford, California 94305

Professor Albert I. King
Wayne State University
Biomechanics Research Center
Detroit, Michigan 48202

Dr. V. R. Hodgson
Wayne State University
School of Medicine
Detroit, Michigan 48202

Dean B. A. Boley
Northwestern University
Department of Civil Engineering
Evanston, Illinois 60201

Professor P. G. Hodge, Jr.
University of Minnesota
Department of Aerospace Engineering
and Mechanics
Minneapolis, Minnesota 55455

Dr. D. C. Drucker
University of Illinois
Dean of Engineering
Urbana, Illinois 61801

Professor N. M. Newmark
University of Illinois
Department of Civil Engineering
Urbana, Illinois 61803

Professor E. Reissner
University of California, San Diego
Department of Applied Mechanics
La Jolla, California 92037

Professor William A. Nash
University of Massachusetts
Department of Mechanics and
Aerospace Engineering
Amherst, Massachusetts 01002

Universities (Con't)

Professor G. Herrmann
Stanford University
Department of Applied Mechanics
Stanford, California 94305

Professor J. D. Achenbach
Northwest University
Department of Civil Engineering
Evanston, Illinois 60201

Professor S. B. Dong
University of California
Department of Mechanics
Los Angeles, California 90024

Professor Burt Paul
University of Pennsylvania
Towne School of Civil and
Mechanical Engineering
Philadelphia, Pennsylvania 19104

Professor H. W. Liu
Syracuse University
Department of Chemical Engineering
and Metallurgy
Syracuse, New York 13210

Professor S. Bodner
Technion R&D Foundation
Haifa, Israel

Professor Werner Goldsmith
University of California
Department of Mechanical Engineering
Berkeley, California 94720

Professor R. S. Rivlin
Lehigh University
Center for the Application
of Mathematics
Bethlehem, Pennsylvania 18015

Professor F. A. Cozzarelli
State University of New York at
Buffalo
Division of Interdisciplinary Studies
Karr Parker Engineering Building
Chemistry Road
Buffalo, New York 14214

Universities (Con't)

Professor Joseph L. Rose
Drexel University
Department of Mechanical Engineering
and Mechanics
Philadelphia, Pennsylvania 19104

Professor B. K. Donaldson
University of Maryland
Aerospace Engineering Department
College Park, Maryland 20742

Professor Joseph A. Clark
Catholic University of America
Department of Mechanical Engineering
Washington, D.C. 20064

Dr. Samuel B. Batdorf
University of California
School of Engineering
and Applied Science
Los Angeles, California 90024

Professor Isaac Fried
Boston University
Department of Mathematics
Boston, Massachusetts 02215

Professor E. Krempl
Rensselaer Polytechnic Institute
Division of Engineering
Engineering Mechanics
Troy, New York 12181

Dr. Jack R. Vinson
University of Delaware
Department of Mechanical and Aerospace
Engineering and the Center for
Composite Materials
Newark, Delaware 19711

Dr. J. Duffy
Brown University
Division of Engineering
Providence, Rhode Island 02912

Dr. J. L. Swedlow
Carnegie-Mellon University
Department of Mechanical Engineering
Pittsburgh, Pennsylvania 15213

Universities (Con't)

Dr. V. K. Varadan
Ohio State University Research Foundation
Department of Engineering Mechanics
Columbus, Ohio 43210

Dr. Z. Hashin
University of Pennsylvania
Department of Metallurgy and
Materials Science
College of Engineering and
Applied Science
Philadelphia, Pennsylvania 19104

Dr. Jackson C. S. Yang
University of Maryland
Department of Mechanical Engineering
College Park, Maryland 20742

Professor T. Y. Chang
University of Akron
Department of Civil Engineering
Akron, Ohio 44325

Professor Charles W. Bert
University of Oklahoma
School of Aerospace, Mechanical,
and Nuclear Engineering
Norman, Oklahoma 73019

Professor Satya N. Atluri
Georgia Institute of Technology
School of Engineering and
Mechanics
Atlanta, Georgia 30332

Professor Graham F. Carey
University of Texas at Austin
Department of Aerospace Engineering
and Engineering Mechanics
Austin, Texas 78712

Dr. S. S. Wang
University of Illinois
Department of Theoretical and
Applied Mechanics
Urbana, Illinois 61801

Professor J. F. Abel
Cornell University
Department of Theoretical
and Applied Mechanics
Ithaca, New York 14853

Universities (Con't)

Professor V. E. Weubert
Pennsylvania State University
Department of Engineering Science
and Mechanics
University Park, Pennsylvania 16802

Professor A. W. Leissa
Ohio State University
Department of Engineering Mechanics
Columbus, Ohio 43212

Professor C. A. Brebbia
University of California, Irvine
Department of Civil Engineering
School of Engineering
Irvine, California 92717

Dr. George T. Rahn
Vanderbilt University
Mechanical Engineering and
Materials Science
Nashville, Tennessee 37235

Dean Richard H. Gallagher
University of Arizona
College of Engineering
Tucson, Arizona 85721

Professor E. F. Rybicki
The University of Tulsa
Department of Mechanical Engineering
Tulsa, Oklahoma 74104

Dr. R. Haftka
Illinois Institute of Technology
Department of Mechanics and Mechanical
and Aerospace Engineering
Chicago, Illinois 60616

Professor J. G. de Oliveira
Massachusetts Institute of Technology
Department of Ocean Engineering
77 Massachusetts Avenue
Cambridge, Massachusetts 02139

Dr. Bernard W. Shaffer
Polytechnic Institute of New York
Route 110
Farmingdale, New York 11735

Industry and Research Institutes

Dr. Norman Hobbs
Kaman Avidyne
Division of Kaman
Sciences Corporation
Burlington, Massachusetts 01803

Argonne National Laboratory
Library Services Department
9700 South Cass Avenue
Argonne, Illinois 60440

Dr. M. C. Junger
Cambridge Acoustical Associates
54 Rindge Avenue Extension
Cambridge, Massachusetts 02140

Mr. J. H. Torrance
General Dynamics Corporation
Electric Boat Division
Groton, Connecticut 06340

Dr. J. E. Greenspon
J. G. Engineering Research Associates
3831 Menlo Drive
Baltimore, Maryland 21215

Newport News Shipbuilding and
Dry Dock Company
Library
Newport News, Virginia 23607

Dr. W. F. Bozich
McDonnell Douglas Corporation
5301 Bolsa Avenue
Huntington Beach, California 92647

Dr. H. N. Abramson
Southwest Research Institute
8500 Culebra Road
San Antonio, Texas 78284

Dr. R. C. DeHart
Southwest Research Institute
8500 Culebra Road
San Antonio, Texas 78284

Dr. M. L. Baron
Weidlinger Associates
110 East 59th Street
New York, New York 10022

Industry and Research Institutes (Con't)

Dr. T. L. Geers
Lockheed Missiles and Space Company
3251 Hanover Street
Palo Alto, California 94304

Mr. William Caywood
Applied Physics Laboratory
Johns Hopkins Road
Laurel, Maryland 20810

Dr. Robert E. Dunham
Pacifica Technology
P.O. Box 148
Del Mar, California 92014

Dr. M. F. Kanninen
Battelle Columbus Laboratories
505 King Avenue
Columbus, Ohio 43201

Dr. A. A. Hochrein
Daedalean Associates, Inc.
Springlake Research Road
15110 Frederick Road
Woodbine, Maryland 21797

Dr. James W. Jones
Swanson Service Corporation
P.O. Box 5415
Huntington Beach, California 92646

Dr. Robert E. Nickell
Applied Science and Technology
3344 North Torrey Pines Court
Suite 220
La Jolla, California 92037

Dr. Kevin Thomas
Westinghouse Electric Corp.
Advanced Reactors Division
P. O. Box 158
Madison, Pennsylvania 15663

Dr. H. D. Hibbitt
Hibbitt & Karlsson, Inc.
132 George M. Cohan Boulevard
Providence, Rhode Island 02903

Dr. R. D. Mindlin
89 Deer Hill Drive
Ridgefield, Connecticut 06877

Industry and Research Institutes

Dr. Norman Hobbs
Kaman Avidyne
Division of Kaman
Sciences Corporation
Burlington, Massachusetts 01803

Argonne National Laboratory
Library Services Department
9700 South Cass Avenue
Argonne, Illinois 60440

Dr. M. C. Junger
Cambridge Acoustical Associates
54 Rindge Avenue Extension
Cambridge, Massachusetts 02140

Mr. J. H. Torrance
General Dynamics Corporation
Electric Boat Division
Groton, Connecticut 06340

Dr. J. E. Greenspon
J. G. Engineering Research Associates
3831 Menlo Drive
Baltimore, Maryland 21215

Newport News Shipbuilding and
Dry Dock Company
Library
Newport News, Virginia 23607

Dr. W. F. Bozich
McDonnell Douglas Corporation
5301 Bolsa Avenue
Huntington Beach, California 92647

Dr. H. N. Abramson
Southwest Research Institute
8500 Culebra Road
San Antonio, Texas 78284

Dr. R. C. DeHart
Southwest Research Institute
8500 Culebra Road
San Antonio, Texas 78284

Dr. M. L. Baron
Weidlinger Associates
110 East 59th Street
New York, New York 10022

Industry and Research Institutes (Con't)

Dr. T. L. Geers
Lockheed Missiles and Space Company
3251 Hanover Street
Palo Alto, California 94304

Mr. William Caywood
Applied Physics Laboratory
Johns Hopkins Road
Laurel, Maryland 20810

Dr. Robert E. Dunham
Pacifica Technology
P.O. Box 148
Del Mar, California 92014

Dr. M. F. Kanninen
Battelle Columbus Laboratories
505 King Avenue
Columbus, Ohio 43201

Dr. A. A. Hochrein
Daedalean Associates, Inc.
Springlake Research Road
15110 Frederick Road
Woodbine, Maryland 21797

Dr. James W. Jones
Swanson Service Corporation
P.O. Box 5415
Huntington Beach, California 92646

Dr. Robert E. Wickell
Applied Science and Technology
3344 North Torrey Pines Court
Suite 220
La Jolla, California 92037

Dr. Kevin Thomas
Westinghouse Electric Corp.
Advanced Reactors Division
P. O. Box 158
Madison, Pennsylvania 15663

Dr. H. D. Hibbitt
Hibbitt & Karlsson, Inc.
132 George M. Cohan Boulevard
Providence, Rhode Island 02903

Dr. R. D. Mindlin
89 Deer Hill Drive
Ridgefield, Connecticut 06877

474:NP:716:lab
78u474-619

Industry and Research Institutes (Con't)

Dr. Richard E. Dame
Mega Engineering
11961 Tech Road
Silver Spring, Maryland 20904

Mr. G. M. Stanley
Lockheed Palo Alto Research
Laboratory
3251 Hanover Street
Palo Alto, California 94304

Mr. R. L. Cloud
Robert L. Cloud Associates, Inc.
2972 Adeline Street
Berkeley, California 94703

**DAT
FILM**