

AD-A141 284

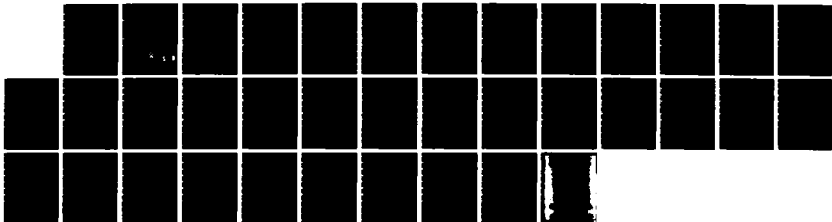
ON THE LINEAR STABILITY OF TWO-DIMENSIONAL BARIUM  
CLOUDS I THE INVISCID CASE(U) NAVAL RESEARCH LAB  
WASHINGTON DC S T ZALESK ET AL. 30 APR 84 NRL-MR-5312

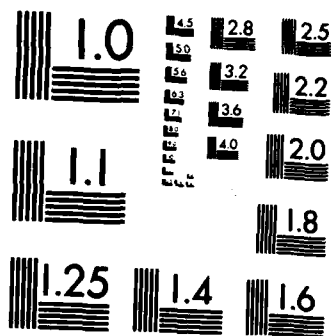
1/1

UNCLASSIFIED

F/G 4/1

NL





MICROCOPY RESOLUTION TEST CHART  
NATIONAL BUREAU OF STANDARDS-1963-A

*(Handwritten scribble)*

NRL Memorandum Report 5312

# On the Linear Stability of Two-Dimensional Barium Clouds I. The Inviscid Case

S. T. ZALESK AND J. D. HUBA

*Geophysical and Plasma Dynamics Branch  
Plasma Physics Division*

AD-A141 284

April 30, 1984

This research was sponsored by the Defense Nuclear Agency under Subtask S99QMXBC,  
with task 00188 and work unit title "Plasma Structure Evolution."



DTIC  
ELECTE  
MAY 21 1984  
S A D

NAVAL RESEARCH LABORATORY  
Washington, D.C.

Approved for public release; distribution unlimited.

84 05 21 043

FILE COPY

REPORT DOCUMENTATION PAGE				
1a. REPORT SECURITY CLASSIFICATION <b>UNCLASSIFIED</b>		1b. RESTRICTIVE MARKINGS		
2a. SECURITY CLASSIFICATION AUTHORITY		3. DISTRIBUTION/AVAILABILITY OF REPORT		
2b. DECLASSIFICATION/DOWNGRADING SCHEDULE		Approved for public release; distribution unlimited.		
4. PERFORMING ORGANIZATION REPORT NUMBER(S) <b>NRL Memorandum Report 5312</b>		5. MONITORING ORGANIZATION REPORT NUMBER(S)		
6a. NAME OF PERFORMING ORGANIZATION <b>Naval Research Laboratory</b>	6b. OFFICE SYMBOL (If applicable) <b>Code 4780</b>	7a. NAME OF MONITORING ORGANIZATION		
6c. ADDRESS (City, State and ZIP Code) <b>Washington, DC 20375</b>		7b. ADDRESS (City, State and ZIP Code)		
8a. NAME OF FUNDING/SPONSORING ORGANIZATION <b>Defense Nuclear Agency</b>	8b. OFFICE SYMBOL (If applicable)	9. PROCUREMENT INSTRUMENT IDENTIFICATION NUMBER		
8c. ADDRESS (City, State and ZIP Code) <b>Washington, DC 20305</b>		10. SOURCE OF FUNDING NOS.		
		PROGRAM ELEMENT NO. <b>62715H 61153N</b>	PROJECT NO. <b>RR033-02- 44</b>	TASK NO. <b>47-0883-04</b>
11. TITLE (Include Security Classification) (See page ii)				
12. PERSONAL AUTHOR(S) <b>S. T. Zalesak and J. D. Huba</b>				
13a. TYPE OF REPORT <b>Interim</b>	13b. TIME COVERED FROM <b>10/83</b> TO <b>10/84</b>	14. DATE OF REPORT (Yr., Mo., Day) <b>April 30, 1984</b>	15. PAGE COUNT <b>37</b>	
16. SUPPLEMENTARY NOTATION <b>This research was sponsored by the Defense Nuclear Agency under Subtask S99QMXBC, work unit 0010" and work unit title "Plasma Structure Evolution."</b>				
17. COSATI CODES		18. SUBJECT TERMS (Continue on reverse if necessary and identify by block number)		
FIELD	GROUP	SUB. GR.	Barium clouds    Bifurcation    Structure    Nuclear clouds	
			U-shaped curve    Plasma structure    Plasma clouds	
19. ABSTRACT (Continue on reverse if necessary and identify by block number)				
<p>We examine the linear stability of the steepened backside of two-dimensional ionospheric barium clouds. We derive expressions for the growth rate of perturbations on these backsides which are functions of (1) the ratio M of the integrated Pedersen conductivity inside the barium cloud to that of the background ionosphere; (2) the overall shape of the cloud; (3) the plasma density gradient scale length L of the steepened backside; and (4) the perturbation wavenumber k. For sufficiently small kL, the growth time as a function of M traces out the "U-shaped curve" observed in previous studies.</p>				
20. DISTRIBUTION/AVAILABILITY OF ABSTRACT UNCLASSIFIED/UNLIMITED <input checked="" type="checkbox"/> SAME AS RPT <input type="checkbox"/> DTIC USERS <input type="checkbox"/>		21. ABSTRACT SECURITY CLASSIFICATION <b>UNCLASSIFIED</b> <input type="checkbox"/>		
22a. NAME OF RESPONSIBLE INDIVIDUAL <b>S. T. Zalesak</b>		22b. TELEPHONE NUMBER (Include Area Code) <b>(202) 767-3215</b>	22c. OFFICE SYMBOL <b>Code 4780</b>	

11. TITLE (Include Security Classification)

**ON THE LINEAR STABILITY OF TWO-DIMENSIONAL BARIUM CLOUDS  
I. THE INVISCID CASE**

CONTENTS

I. INTRODUCTION ..... 1

II. THEORY ..... 2

III. APPROXIMATING THE GROWTH RATE IN CASES WHERE THE  
DENSITY GRADIENT IS FINITE ..... 5

IV. RELATIONSHIP TO THE U-SHAPED CURVE ..... 6

V. CONCLUSIONS ..... 8

APPENDIX — DERIVATION OF THE E X B INSTABILITY GROWTH RATE  
FOR A DISCONTINUOUS INTERFACE ..... 9

ACKNOWLEDGMENTS ..... 13

REFERENCES ..... 21



Accession For	
DTIC GRA&I	<input checked="" type="checkbox"/>
DTIC TAB	<input type="checkbox"/>
Unannounced	<input type="checkbox"/>
Justification	
By	
Distribution/	
Availability Codes	
Avail and/or	
Dist	Special
AI	

# ON THE LINEAR STABILITY OF TWO-DIMENSIONAL BARIUM CLOUDS

## I. THE INVISCID CASE

### I. Introduction

The study of barium cloud phenomenology has been of interest to ionospheric physicists for more than two decades. The release of barium in the ionosphere, followed by its rapid ionization, leads to a complex interaction between the barium plasma and the background ionospheric plasma in the presence of ambient electric and magnetic fields. One of the most interesting phenomena observed is the structuring of the barium cloud: the "fingering" or "striating" of the backside of the cloud. It is generally believed that this structuring is produced by the  $E \times B$  instability [Linson and Workman, 1970]. A substantial research effort, both theoretical and computational, has been devoted to understanding this instability and its application to barium cloud structuring. The purpose of this paper is to examine the linear stability of the steepened backside of two-dimensional barium clouds. We derive a relatively simple expression for the growth rate of the perturbations on these backsides which are functions of (1) the parameter  $M$  which is the ratio of the integrated Pedersen conductivity inside the barium cloud to that of the background ionosphere; (2) the shape of the cloud; (3) the plasma density gradient scale length  $L$  of the steepened backside; and (4) the perturbation wavenumber  $k$ . For sufficiently small  $kL$ , the growth time as a function of  $M$  traces out the "U-shaped curve" observed in previous studies [Linson, 1975; McDonald et al., 1981; Overman and Zabusky, 1980].

The outline for the remainder of this paper is as follows. In Section II we derive the growth rate of a two-dimensional barium cloud, where we approximate the steepened backside of the cloud as a discontinuity. In Section III we relax this constraint and let the density gradient scale length on the steepened backside be finite. In Section IV we relate our results to the "U-shaped curve" of critical Reynolds number seen by McDonald et al. [1981]. Finally, in Section V we present our conclusions and plans for future work.

Manuscript approved February 9, 1984.

## II. Theory

We are interested in deriving the approximate linear growth rate for perturbations applied to the steepened backside of an ionospheric barium cloud. To achieve this we need several earlier results. The first is the equation derived by Ossakow and Chaturvedi [1978] which describes the rise velocities of plasma depletions in the shape of circular or ellipsoidal cylinders in the presence of a gravitational field perpendicular to a magnetic field  $\underline{B}$ . It is simple matter to extend their equation to plasma enhancements in the presence of an electric field  $\underline{E}_0$  (i.e., barium clouds). The second result we shall need is the equation for the linear growth rate of the gradient drift  $\underline{E} \times \underline{B}$  instability when the plasma profile consists of a single discontinuity in plasma density. This result has been derived by Huba and Zalesak [1983]. Finally, we shall need to know the dependence of the growth rate on the plasma density gradient scale length in the real-world regime between the two extremes of a density discontinuity on the one hand, and a smooth density distribution, where "local" theory should hold, on the other. For this information we draw upon the work of Huba et al. [1982] and a suggestion of J.A. Fedder [private communication, 1983].

Consider an idealized two-dimensional barium cloud consisting of a uniform density inside of a "waterbag" of ellipsoidal shape, acted on by a uniform external electric field  $\underline{E}_0 \times$  in the presence of a magnetic field  $B \hat{z}$ . Let the ellipse axis in the direction of  $\underline{E}_0$  be denoted by  $b$  and the other axis by  $a$ . Let the ion density of the barium cloud be denoted by  $n_b$  and that of the background ionosphere be denoted by  $n_0$ . This situation is depicted in Fig. 1. Then the results of Ossakow and Chaturvedi [1978] can be extended to show that the total electric field  $\underline{E}$  inside the barium cloud is given by

$$\underline{E} = \underline{E}_0 \frac{1 + R}{1 + MR} \quad (1)$$

where

$$R \equiv a/b \quad (2)$$



$$M \equiv (n_b + n_o)/n_o \quad (3)$$

Equation (1) is the first result we shall need for our analysis.

Now consider a one-dimensional barium cloud, infinite and invariant in the x direction, which consists of a single jump in electron density from  $n_b + n_o$  to  $n_o$  at  $y = 0$ . That is,  $n_e = n_b + n_o$  for  $y < 0$ , and  $n_e = n_o$  for  $y > 0$ , where  $n_e$  is electron density. Again we impose an electric field, denoted here by  $\underline{E}$ , aligned in the x direction. We then perturb the interface at  $y = 0$  such that the position of the perturbed interface  $\eta(x)$  is given by  $\eta = \alpha \cos kx$  where  $\alpha$  is a small distance. This situation is depicted in Fig. 2. It is shown in Huba and Zalesak [1983] that this interface will grow in amplitude with growth rate  $\gamma$  given by

$$\gamma = k \frac{cE}{B} \frac{M - 1}{M + 1} \quad (4)$$

Equation (4) was derived under the assumption that both Hall currents and the inertial terms in the ion momentum equation are negligible.  $M$  is as defined in Eq. (3). An alternative derivation of Eq. (4), due to the first author, is given in the Appendix.

Consider a steepened barium cloud, as depicted in Fig. 3. If we consider only the tip of the steepened backside, and we further consider only perturbations of sufficiently long wavelength such that  $kL$  is small, where  $k$  is the perturbation wavenumber and  $L$  is the characteristic scale length of the density gradient on the backside of the cloud, then the growth rate of these perturbations should be well approximated by Eq. (4). However, note that the electric field  $\underline{E}$  seen by the cloud is not the externally imposed electric field  $\underline{E}_o$ , but rather some smaller electric field that is a result of the shielding effects of the two-dimensional cloud. If we approximate our barium cloud as an ellipse as depicted in Fig. 1, then Eq. (1) yields precisely this smaller electric field:

$$\underline{E} = \underline{E}_o \frac{1 + R}{1 + MR} \quad (5)$$

Substituting this field into Eq. (4) we get finally

$$\gamma = k \frac{cE_o}{B} \frac{(M - 1)(R + 1)}{(M + 1)(MR + 1)} \quad (6)$$

For the special case of a circular shape ( $R = 1$ ) we get

$$\gamma = 2k \frac{cE_o}{B} \frac{M - 1}{(M + 1)^2} \quad (7)$$

Equation (7) traces out an inverted "U-shaped" dependence of  $\gamma$  on  $M$ , which we relate to the "U-shaped curve" of McDonald et al. [1981] in Section IV. The  $M$  dependence of  $\gamma$  is given by  $(M - 1)/(M + 1)^2$ , which maximizes at  $M = 3$ . A plot of this quantity, as well as its two factors,  $(M - 1)/(M + 1)$  and  $(M + 1)^{-1}$ , which are due to 1-D instability and 2-D shielding respectively, is shown in Fig. 4. Note that the falloff in  $\gamma$  for small  $M$  is due to 1-D instability effects alone, while the falloff in  $\gamma$  for large  $M$  is due to 2-D shielding alone. Thus we conclude that the resistance of 2-D high  $M$  clouds to bifurcation (see McDonald et al., 1981) is due to 2-D shielding.

Equation (7) is very similar, but not identical to, an expression derived by Overman and Zabusky [1980] for the case of a perfectly circular "waterbag" model of a barium cloud. Their linearized analysis showed the results of perturbing a circular cloud of radius  $r_o$  by making radial sinusoidal displacements of its boundary

$$r = r_o + \sum_m \alpha_m \cos m\phi \quad (8)$$

where  $r_o$  is the initial radius of the cloud,  $r$  is the perturbed radius,  $\alpha_m$  is the perturbation amplitude,  $\phi$  is the angle measured from the backside of the cloud, and  $m$  is an integer (mode number). They found that

$$\partial \alpha_m / \partial t = \left( 2 \frac{m}{r_o} \frac{cE_o}{B} \frac{M - 1}{(M + 1)^2} \right) \alpha_{m+1} \quad (9)$$

Note that if we write our perturbation (8) in terms of arc length  $r_o \phi$  multiplied by a wavenumber  $k$  then  $\cos m\phi = \cos k r_o \phi$  and

$$m/r_o = k \quad (10)$$

making Eq. (9) yield the same "growth rate" as given by Eq. (7), except that there is an  $\alpha_m$  on the left side of (9) and an  $\alpha_{m+1}$  on the right side. Thus we have not totally recovered the results of Overman and Zabusky [1980] for the circular waterbag, but the similarity is both striking and encouraging. Furthermore, our formula Eq. (6) exhibits several advantages over the Overman and Zabusky [1980] result. For one thing, we do not have the ambiguity associated with using the term "growth rate" to describe the rate at which mode  $m+1$  supplies energy to mode  $m$  (see Eq. 9). Equation (6) is a genuine growth rate in the usual sense of the word. Also, precisely because we have derived Eq. (6) as the product of a term involving global effects, i.e., the overall shape of the cloud, and a term involving local effects, i.e., the densities and electric fields at the steepened edge of the cloud, it is possible to generalize the results to elliptical clouds (via the  $R$  dependence) and, more importantly, to the case of a finite density gradient on the backside of the cloud, as we shall see in Section III.

### III. Approximating the Growth Rate in Cases Where the Density Gradient is Finite

Let us return to Eq. (4). This equation was derived under the assumption that the edge of the barium cloud represented a true discontinuity in electron density; but real barium clouds consist of finite gradients. How accurately does Eq. (4) represent the case of a sharp but finite density gradient and how are we to treat the case where the density gradient is not even sharp? The work of Huba et al. [1983] gives numerically generated growth rates for a wide range of ratios of perturbation wavelength to gradient scale length. However, we are interested here in finding a simple, closed form expression. We propose the following, after a suggestion due to J.A. Fedder [private communication, 1983]

$$\gamma = k \frac{cE}{B} \frac{M-1}{M+1}, \quad kL < \frac{M+1}{M-1} \quad (11a)$$

$$\gamma = \frac{cE}{B} L^{-1}, \quad kL > \frac{M+1}{M-1} \quad (11b)$$

where  $L^{-1}$  is the maximum value of the quantity  $\frac{1}{n_e} \frac{\partial n_e}{\partial y}$  for the geometry shown in Fig. 2 wherein we have replaced the discontinuity by a finite transition length. Equation (11b) is the classical result for the gradient drift instability from local theory (see Linson and Workman [1970]). The combined Eq. (11) agrees very well with the actual numerical results shown in Huba et al. [1983] when allowance is made for the fact that the  $L$  used in that paper differs from the one used here by a factor of 1.45. A comparison is shown in Fig. 5.

Combining Eq. (11) with Eq. (1), we get our final expressions for the growth rate of instabilities on the steepened backside of a barium cloud, in the absence of diffusion:

$$\gamma = k \frac{cE_0}{B} \frac{M-1}{M+1} \frac{R+1}{MR+1}, \quad kL < \frac{M+1}{M-1} \quad (12a)$$

$$\gamma = \frac{cE_0}{B} L^{-1} \frac{R+1}{MR+1}, \quad kL > \frac{M+1}{M-1} \quad (12b)$$

An obvious caveat to the above is that the perturbation wavelength  $\lambda = k/2\pi$  must be smaller than the total diameter of the barium cloud to have the concept of a Fourier mode perturbation to make any sense at all.

We note that we have constructed our final expressions such that they not only very closely recover the results of Overman and Zabusky [1980] (for  $R = 1$  and  $L = 0$ , as previously discussed) but also accurately reproduce the other known case of a one-dimensional plasma distribution ( $R = 0$ ) for the entire range of  $kL$ .

#### IV. Relationship to the U-Shaped Curve

Equation (7), when viewed as an expression for  $\gamma$  as a function of  $M$ , yields a curve which maximizes at  $M = 3$  and monotonically decreases away from this value for all values of  $M$  for which our barium cloud represents a true enhancement in electron density ( $1 < M < \infty$ ). In fact the growth rate  $\gamma$  is zero for  $M = 1$  and  $M = \infty$ . The corresponding curve of a growth time  $\gamma^{-1}$  versus  $M$  minimizes at  $M = 3$  and goes to infinity at  $M = 1$  and  $M = \infty$ . Curves of  $\gamma^{-1}$  versus  $\lambda$  which exhibit this qualitative behavior have been

dubbed "U-shaped curves" by several researchers. If one views barium cloud bifurcation as a battle between the gradient drift growth rate  $\gamma$  and diffusive processes, then this U-shaped curve can be related to a similar U-shaped curve which relates the amount of diffusion  $D$  needed to stop the bifurcation of a cloud of a given radius  $r_0$ , as a function of  $M$ . Let us assume that the effect of diffusion is to contribute a term  $-k^2 D$  to the growth rate. Let us further approximate our barium cloud as a cylinder ( $R = 1$ ), with very steep edges ( $L/r_0 < 1$ ). Then our growth rate is

$$\gamma = 2k \frac{cE_0}{B} \frac{M-1}{(M+1)^2} - k^2 D \quad (13)$$

We will further assume that bifurcation, if it takes place at all, takes place at  $kL \sim 1$ . The bifurcation condition is then found by setting  $\gamma = 0$  in (13) with  $k = L^{-1}$ :

$$L^{-2} D = 2L^{-1} \frac{cE_0}{B} \frac{M-1}{(M+1)^2} \quad (14)$$

$$\frac{\frac{cE_0}{B} L}{D} = \frac{1}{2} \frac{(M+1)^2}{(M-1)} \quad (15)$$

Noting that the left-hand side of (15) is simply McDonald et al.'s [1981] Reynolds number  $Re$  we get

$$Re = \frac{1}{2} \frac{(M+1)^2}{(M-1)} \quad (16)$$

Note that McDonald et al. [1981] got

$$Re \sim 75 \frac{(M+1)^2}{(M-1)} \quad (17)$$

so the functional forms are the same but our Eq. (16) seems to state that it requires 150 times more diffusion to stop bifurcation than was observed by McDonald et al. [1981]. Whence the discrepancy? Part of the difference can be removed by noting that the "finger" of McDonald et al. [1981] corresponds to taking  $R = \infty$ , in which case we would get

$$Re = \frac{M(M+1)}{(M-1)} \quad (18)$$

For large  $M$  this removes half of the discrepancy. Accounting for a larger share of the difference is McDonald et al.'s [1981] equation for computing  $L$  (their Eq. (5)), which appears to give  $L$ 's which are larger than the minimum gradient scale length we have assumed here. However, we do not believe this effect could account for a factor greater than ten, which still leaves a discrepancy of more than seven. That is, the model we propose here predicts a factor of at least seven greater diffusion necessary to stop bifurcation than is given by McDonald et al. [1981]. The U-shaped dependence on  $M$ , however, is the same. We hope to be able to resolve these quantitative differences in the sequel to this paper [Zalesak, 1983], where the full effects of diffusion are considered.

#### V. Conclusions

We have derived an expression, Eq. 12, that we believe to be a good approximation to the actual growth rate of perturbations applied to the steepened backside of a two-dimensional ionospheric barium cloud, for the case of no electron or ion diffusion. Diffusion plays a large role in the behavior of two-dimensional barium clouds, however, and affects the growth rate in two ways:

- (i) diffusion will determine the maximum density gradient that can exist at the backside of the barium cloud;
- (ii) diffusion will provide a damping mechanism for any perturbation which attempts to grow on the backside of the cloud. We have already treated this effect, at least approximately, in Section IV.

These two combined effects of diffusion are treated in the sequel to this paper [Zalesak, 1983].

Appendix. Derivation of the  $\underline{E} \times \underline{B}$  Instability Growth Rate for a Discontinuous Interface

The geometry we shall consider is depicted in Fig. 6. The differential equations describing this system are [McDonald et al., 1981]:

$$\frac{\partial n_e}{\partial t} + \nabla \cdot (n_e \underline{v}) = 0 \quad (\text{A1})$$

$$\nabla \cdot (n_e \nabla \phi) = \underline{E} \cdot \nabla n_e \quad (\text{A2})$$

where 
$$\underline{v} = -\frac{c}{B^2} \nabla \phi \times \underline{B} \quad (\text{A3})$$

Here  $n_e$  is the electron density, which is  $n'$  for  $y > \eta(x)$  and  $n$  for  $y < \eta(x)$ ,  $c$  is the speed of light,  $\underline{B}$  is the magnetic field,  $\underline{E}$  is the imposed electric field, and  $\phi$  is the induced electrostatic potential. Note from Eq. (A3) that we have placed ourselves in a reference frame drifting with the  $\underline{E} \times \underline{B}$  velocity. Our two-dimensional plasma resides in the  $x$ - $y$  Cartesian plane.  $\underline{B}$  is aligned along  $\hat{z}$ .

If  $\underline{E} = E \hat{x}$ , and we ignore Hall currents, then the geometry depicted in Fig. 6 is an equilibrium configuration with  $\eta = 0$ . We now apply a perturbation to the position of the interface, denoted by  $\eta(x)$ , of the form

$$\eta = \alpha \cos kx e^{i\sigma t} \quad (\text{A4})$$

and ask what the response of the electrostatic potentials in the two regions will be. Noting that  $\nabla n = \nabla n' = 0$ , since the fluid is incompressible and we have only moved the interface, Eq. (A2) becomes

$$\nabla^2 \phi' = 0 \quad , \quad y > \eta(x) \quad (\text{A5})$$

$$\nabla^2 \phi = 0 \quad , \quad y < \eta(x) \quad (\text{A6})$$

If we assume solutions of the form

$$\phi' = G'(y) \sin kx e^{i\sigma t} \quad , \quad y > \eta(x) \quad (\text{A7})$$

$$\phi = G(y) \sin kx e^{i\sigma t}, \quad y < \eta(x) \quad (\text{A8})$$

(Note we are assuming a specified phase relationship between  $\eta$  and  $\phi$  which will later be shown to satisfy our boundary conditions), then demanding that  $\phi'$  vanish at  $y = +\infty$  and  $\phi$  vanish at  $y = -\infty$  yields

$$\phi' = C' e^{-ky} \sin kx e^{i\sigma t}, \quad y > \eta(x) \quad (\text{A9})$$

$$\phi = C e^{+ky} \sin kx e^{i\sigma t}, \quad y < \eta(x) \quad (\text{A10})$$

We shall later see that  $\sigma$  is pure imaginary, meaning that the perturbation does not propagate in the  $x$  direction. Therefore the movement of the interface is determined by the  $y$ -components of the velocity fields at the interface, which must be the same for the interface to be well defined (no interpenetration or cavitation):

$$\frac{\partial \eta}{\partial t} = v'_y = v_y \text{ at } y = \eta \quad (\text{A11})$$

but 
$$v_y = \frac{c}{B} \frac{\partial \phi}{\partial x}$$

$$v'_y = \frac{c}{B} \frac{\partial \phi'}{\partial x}$$

so

$$\begin{aligned} \frac{B}{c} \frac{\partial \eta}{\partial t} &= kC' e^{-ky} \cos kx e^{i\sigma t} \Big|_{y=\eta} \\ &= kC e^{+ky} \cos kx e^{i\sigma t} \Big|_{y=\eta} \end{aligned} \quad (\text{A12})$$

Since  $\eta$  is assumed to be arbitrarily small we have

$$C' = C \quad (\text{A13})$$

but by Eq. (A4)

$$\frac{\partial \eta}{\partial t} = i\sigma \alpha \cos kx e^{i\sigma t} \quad (\text{A14})$$



so comparing (A12) and (A14) we get

$$i \frac{B}{c} \sigma \alpha = kC' = kC \quad (\text{A15})$$

Now we have one last constraint to satisfy, namely that  $\nabla \cdot \underline{J} = 0$ . We will use the integral form of this constraint, that is

$$\iint_{S(V)} \underline{J} \cdot \hat{n} \, dS = 0 \quad (\text{A16})$$

for any control volume  $V$  bounded by surface  $S(V)$ . Equation (A16) obviously holds for any control volume not containing the interface  $\eta(y)$ , since  $n = a$  constant and  $\nabla^2 \phi = 0$ . Consider our interface and the control volume depicted in Fig. 7.  $J_L$ ,  $J_R$ ,  $J_B$  and  $J_T$  are the total currents flowing through the left, right, bottom and top surfaces respectively of the control volume. We define  $\eta_R \equiv \eta(x_R)$  and  $\eta_L \equiv \eta(x_L)$ .

$$\iint \underline{J} \cdot \hat{n} \, ds = J_R - J_L + J_T - J_B = 0 \quad (\text{A17})$$

$$J_T = -n \frac{\partial \phi'}{\partial y} = +n'kCe^{-ky_T} \int_{x_L}^{x_R} \sin kx \, dx \quad (\text{A18})$$

$$J_B = -n \frac{\partial \phi}{\partial y} = -nkCe^{ky_B} \int_{x_L}^{x_R} \sin kx \, dx \quad (\text{A19})$$

$$J_R = J_R^I + J_R^{II} \quad (\text{A20})$$

where

$$J_R^{II} \equiv \int_{y_B}^{\eta_R} n(E - \frac{\partial \phi}{\partial x}) dy \quad (\text{A21})$$

$$J_R^I \equiv \int_{\eta_R}^{y_T} n'(E - \frac{\partial \phi'}{\partial x}) dy \quad (\text{A22})$$

Since both  $\frac{\partial \phi'}{\partial x}$  and the integration path length  $(y_T - \eta_R)$  are perturbation quantities in Eq. (A22), the integral involving  $n' \partial \phi' / \partial x$  will be quadratic in the perturbation and hence negligible. We then get

$$J_R^I = \int_{\eta_R}^{y_T} n'E \, dy = (y_T - \eta_R)n'E \quad (\text{A23})$$

Similarly

$$J_R^{II} = \int_{y_B}^{\eta_R} n E dy = (\eta_R - y_B) n E \quad (A24)$$

$$J_R = J_R^I + J_R^{II} = y_T n' E - y_B n E + \eta_R (n - n') E \quad (A25)$$

Using similar reasoning we get

$$J_L = y_T n' E - y_B n E + \eta_L (n - n') E \quad (A26)$$

$$J_R - J_L = (n - n') E (\eta_R - \eta_L) \quad (A27)$$

We now let

$$(x_R - x_L) \rightarrow 0 \quad (A28)$$

Then

$$J_R - J_L = (n - n') E \frac{\partial \eta}{\partial x} (x_R - x_L) \quad (A29)$$

but from Eq. (A4)

$$\frac{\partial \eta}{\partial x} = -\alpha k \sin kx e^{i\sigma t} \quad (A30)$$

so

$$J_R - J_L = - (n - n') E \alpha k \sin kx e^{i\sigma t} (x_R - x_L). \quad (A31)$$

Using Eq. (A28) and noting that  $y_T$  and  $y_B$  are perturbation quantities we can set

$$\int_{x_L}^{x_R} \sin kx dx \approx \sin kx (x_R - x_L) \quad (A32)$$

$$e^{-ky_T} = e^{+ky_B} \approx 1 \quad (A33)$$

and hence Eqs. (A18) and (A19) become

$$J_T = + n' k C \sin kx(x_R - x_L) \quad (A34)$$

$$J_B = - n k C \sin kx(x_R - x_L) \quad (A35)$$

$$J_T - J_B = (n' + n) k C \sin kx(x_R - x_L) \quad (A36)$$

Combining Eq. (A36), (A31), and (A17) and canceling the common term  $k \sin kx e^{i\sigma t}(x_R - x_L)$  we get

$$(n' + n)C - (n - n')E \alpha = 0 \quad (A37)$$

Now substituting Eq. (A15) into (A37)

$$(n' + n)i \frac{B\sigma\alpha}{kC} = (n - n')E\alpha$$

$$\sigma = -i \frac{n - n'}{n' + n} k \frac{cE}{B} \quad (A38)$$

$$\gamma = \frac{n - n'}{n' + n} k \frac{cE}{B} \quad (A39)$$

Defining  $M \equiv n/n'$

$$\gamma = \frac{M - 1}{M + 1} k \frac{cE}{B} \quad (A40)$$

which corresponds to the result obtained by Huba and Zalesak [1983].

#### Acknowledgments

This work was supported by the Defense Nuclear Agency.

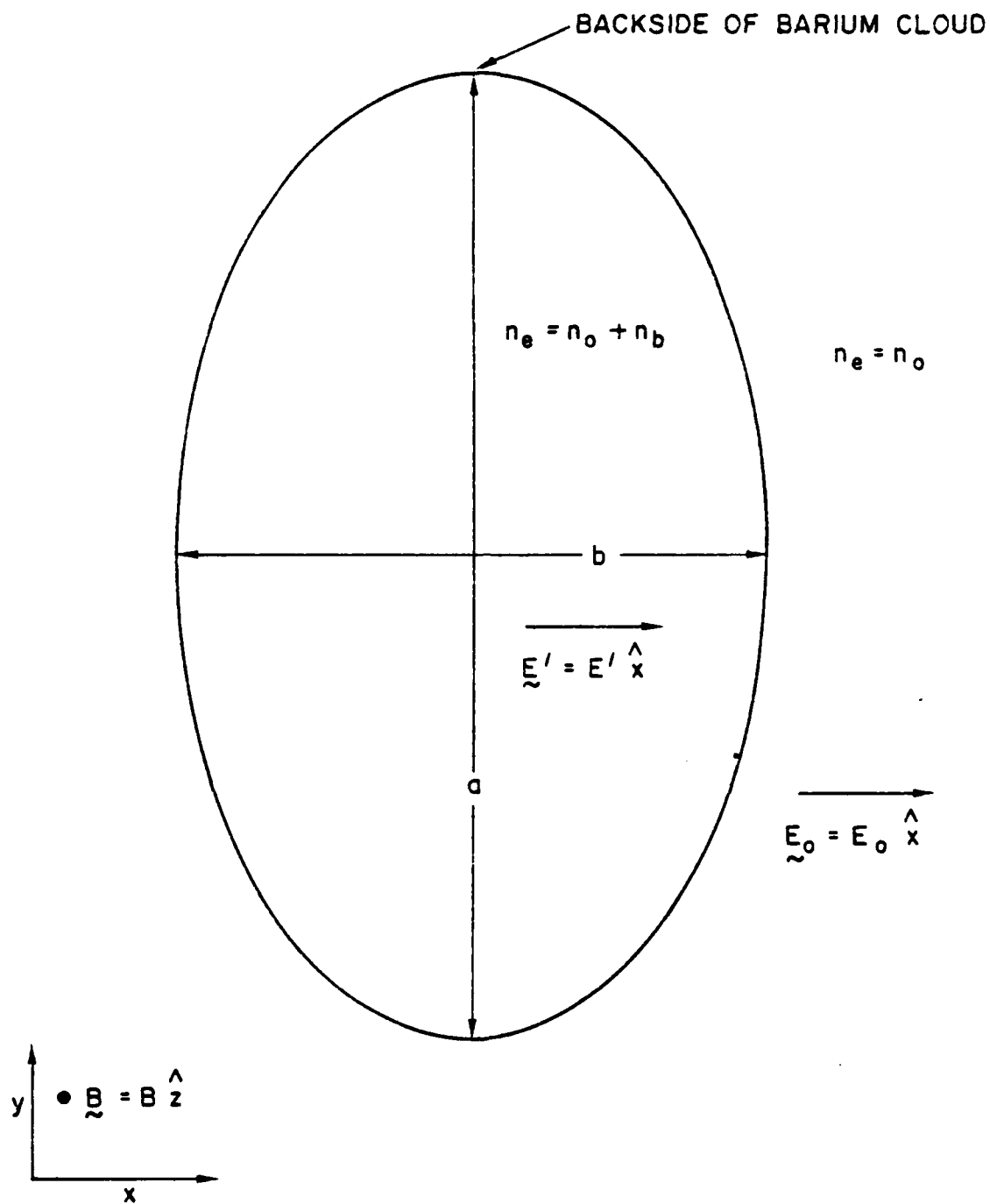


Fig. 1. Idealized "waterbag" elliptical barium cloud geometry. The total electron density, barium cloud ion density, and background ionosphere ion density are denoted by  $n_e$ ,  $n_b$ , and  $n_o$  respectively.  $\underline{B}$  is the ambient magnetic field, and  $\underline{E}_o$  is the externally imposed electric field.  $\underline{E}$  is the constant shielded electric field inside the cloud.  $a$  and  $b$  are the major and minor axes of the ellipse respectively.

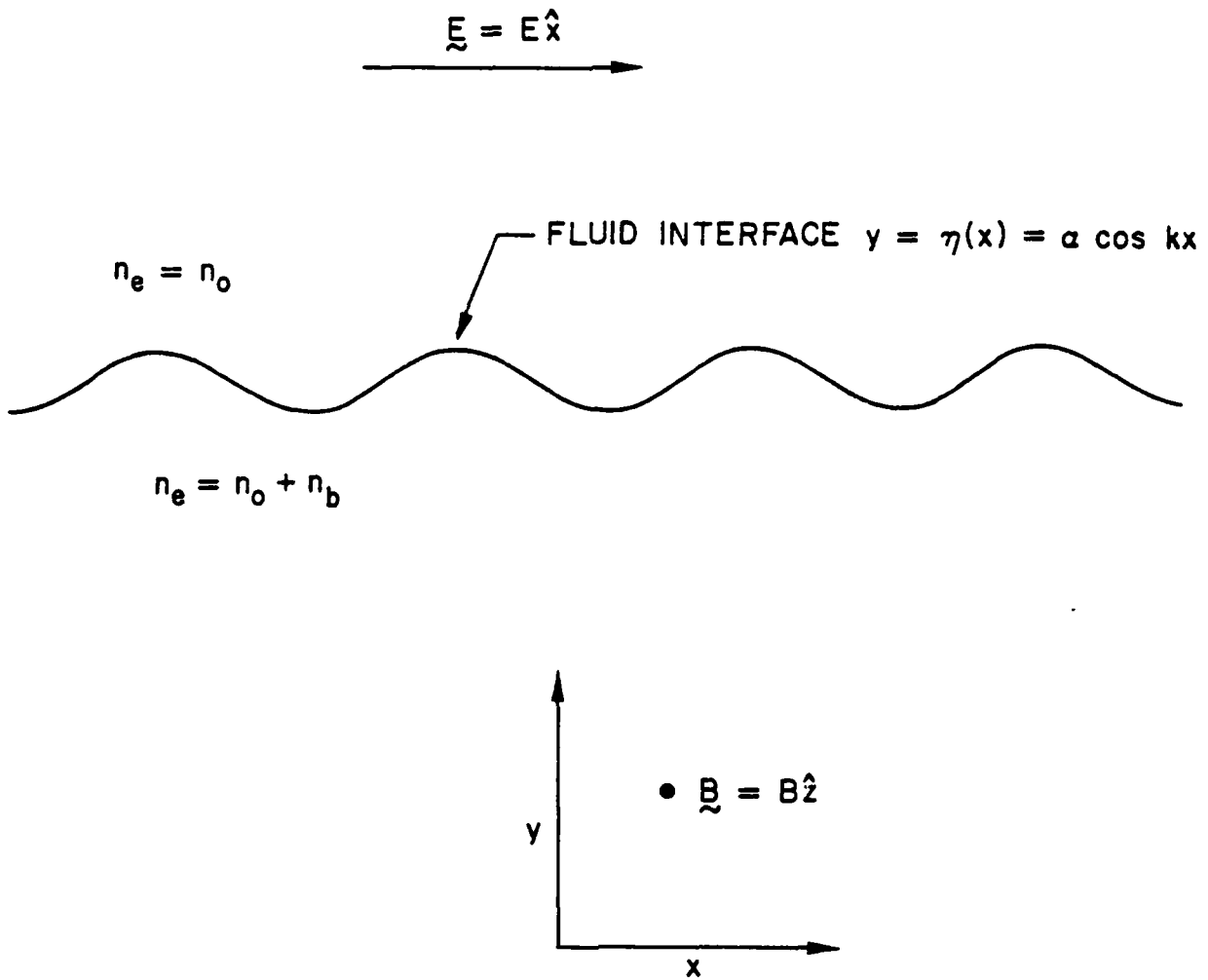


Fig. 2 Geometry of 1-D barium cloud configuration for stability analysis of discontinuous interface.

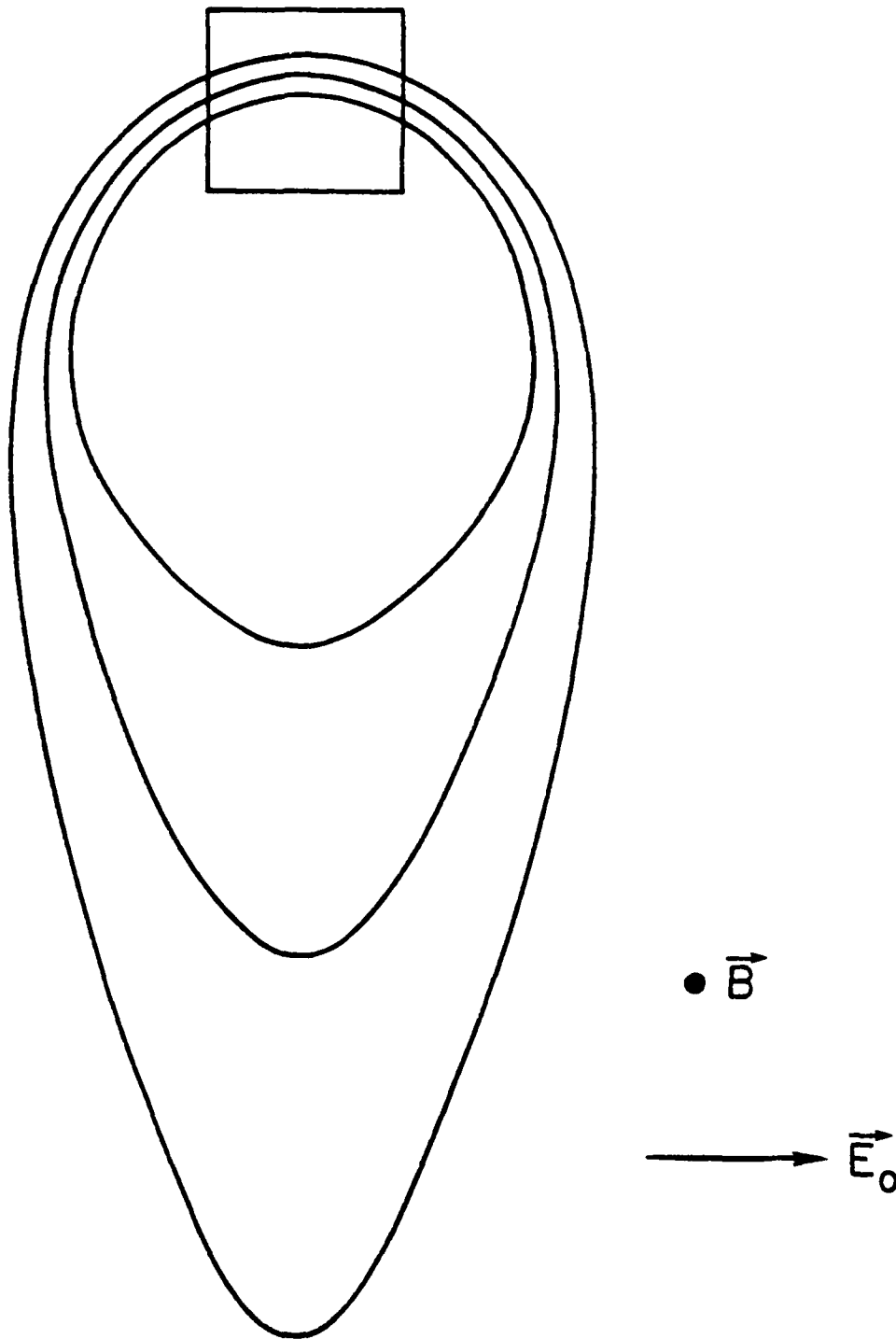


Fig. 3 Isodensity contours of a steepened 2-D barium cloud. The box indicates that region of space over which we will apply our 1-D stability analysis by approximating the density gradient there as a 1-D, slowly evolving structure.

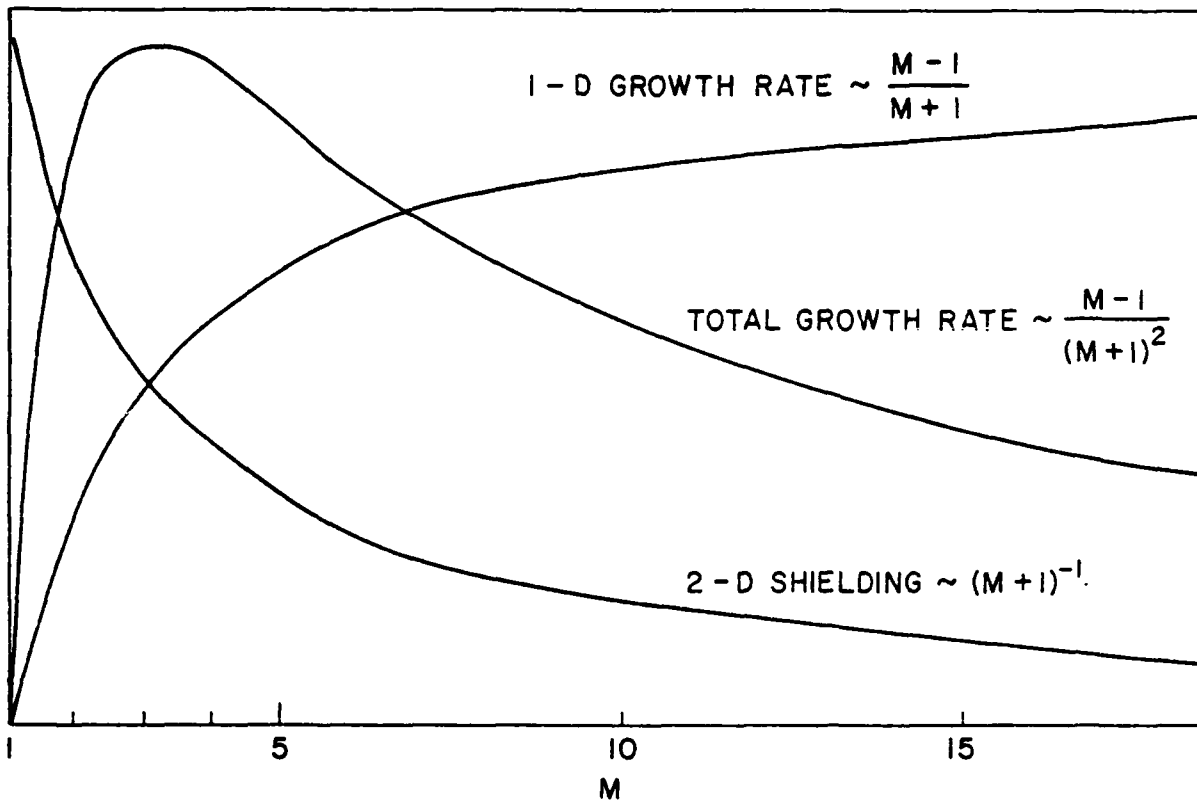


Fig. 4 Plot of the M-dependence of the growth rate given by Eq. (7),  $M - 1/(M + 1)^2$ . Also shown are its two component parts,  $(M - 1)/(M + 1)$  and  $(M + 1)^{-1}$ , due to 1-D instability and 2-D shielding results respectively.

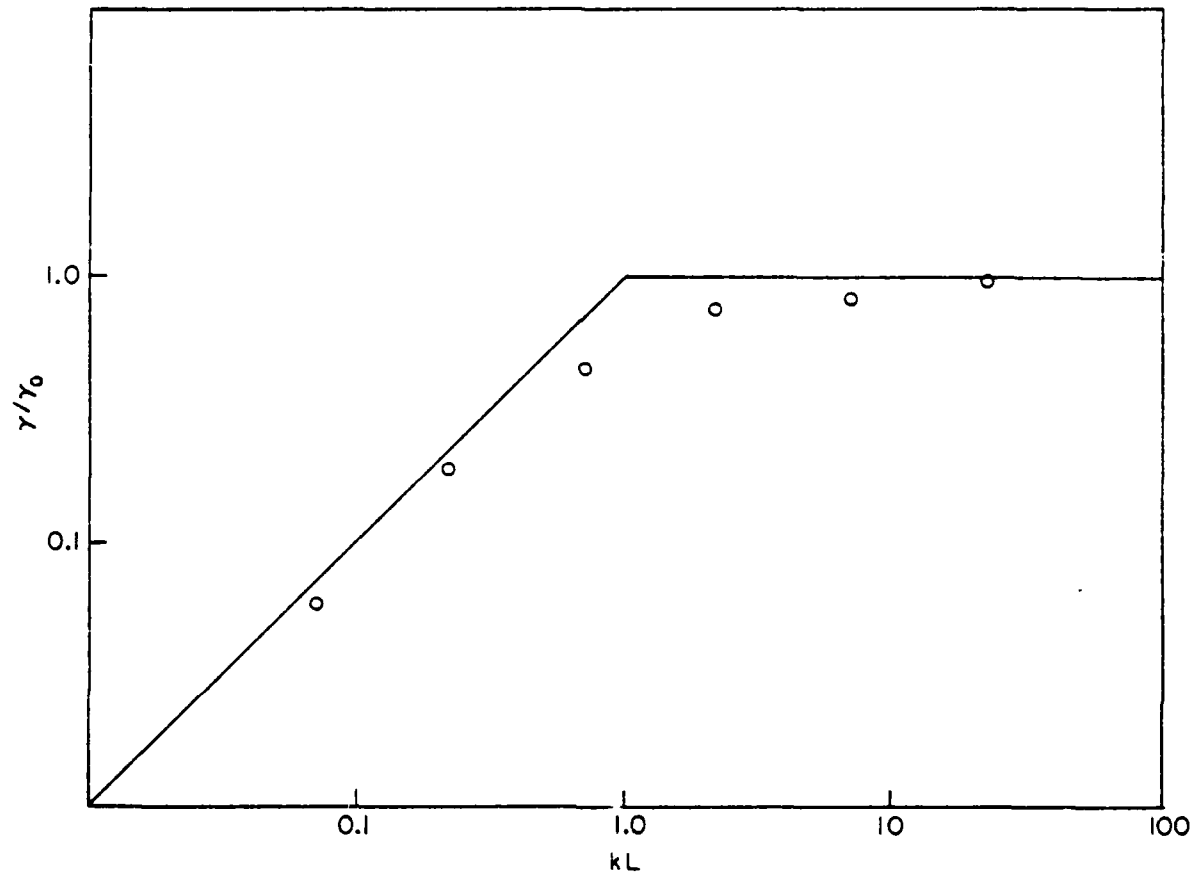


Fig. 5 Plot of normalized growth rate versus  $kL$  for the case of the  $M = 39$  cloud considered by Huba et al. [1982]. The solid line depicts the simple model shown here, while the circles represent numerical results from Huba et al. [1982].



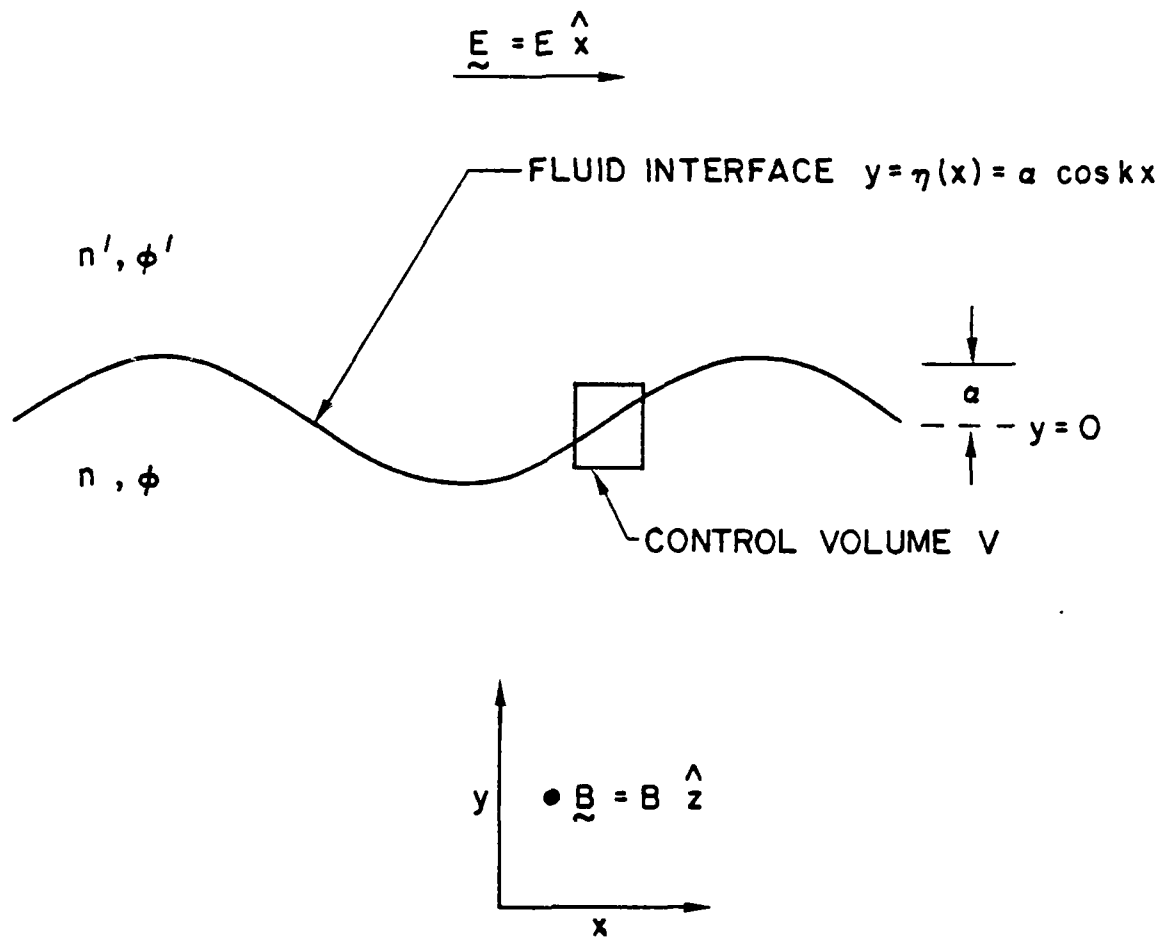


Fig. 6 Geometry of 1-D barium cloud configuration for stability analysis, as in Fig. 2.  $n$  and  $\phi$  are the plasma density and electrostatic potential, respectively. Primed and unprimed variables denote quantities above and below the interface  $y = \eta(x)$ , respectively. Shown is the control volume used to evaluate  $\nabla \cdot \mathbf{J}$ .

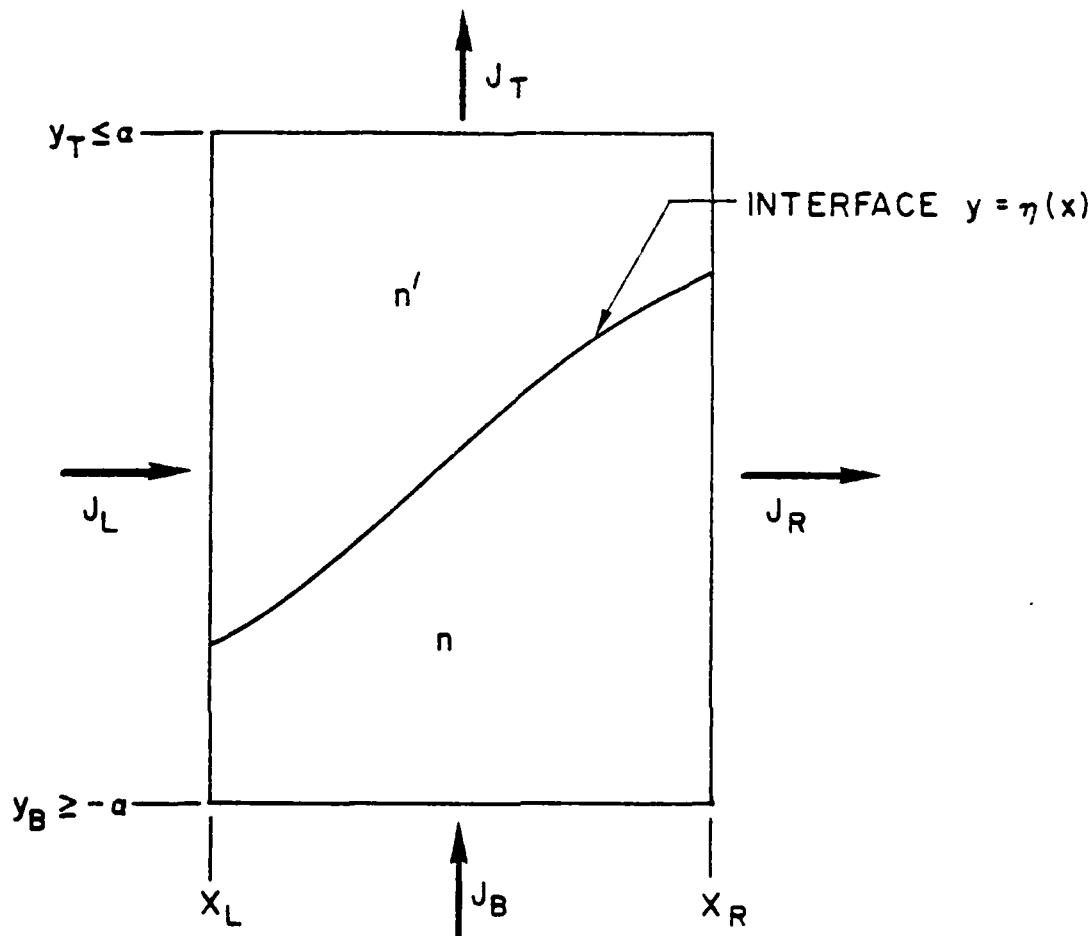


Fig. 7. Blow-up of the control volume shown in Fig. 6. Depicted are the total currents flowing through the four surfaces of the volume.

## References

- Huba, J.D., S.L. Ossakow, P. Satyanarayana, and P.N. Guzdar, Linear theory of the E x B instability with an Inhomogeneous Electric Field, J. Geophys. Res., 88, 425, 1983.
- Huba, J.D. and S.T. Zalesak, The long wavelength limit of the E x B instability, J. Geophys. Res., 88, 10263, 1983.
- Linson, L.M. and J.B. Workman, Formation of striations in ionospheric ion clouds, J. Geophys. Res., 75, 3211, 1970.
- Linson, L.M., Slab release and onset time of striations, in Multiple Barium Release Studies, KMR Ionospheric Monitoring Program, Spring, 1975, HAPREX Final Report, vol. 3, Stanford Reserch Institute, Menlo Park, Calif., Oct. 1975.
- McDonald, B.E., S.L. Ossakow, S.T. Zalesak, and N.J. Zabusky, Scale sizes and lifetimes of F region plasma cloud striations as determined by the condition of marginal stability, J. Geophys. Res., 86, 5775, 1981.
- Ossakow, S.L. and P.K. Chaturvedi, Morphological studies of rising equatorial spread F bubbles, J. Geophys. Res., 83, 2085, 1978.
- Overman, E.A. and N.J. Zabusky, Stability and nonlinear evolution of plasma clouds via regularized contour dynamics, Phys. Rev. Lett., 45, 1693, 1980.
- Zalesak, S.T., On the linear stability of two-dimensional barium clouds. II. The effect of diffusion, NRL Memorandum Report in preparation, 1983.

## DISTRIBUTION LIST

### DEPARTMENT OF DEFENSE

ASSISTANT SECRETARY OF DEFENSE  
COMM, CMD, CONT 7 INTELL  
WASHINGTON, D.C. 20301

DIRECTOR  
COMMAND CONTROL TECHNICAL CENTER  
PENTAGON RM BE 685  
WASHINGTON, D.C. 20301  
O1CY ATTN C-650  
O1CY ATTN C-312 R. MASON

DIRECTOR  
DEFENSE ADVANCED RSCH PROJ AGENCY  
ARCHITECT BUILDING  
1400 WILSON BLVD.  
ARLINGTON, VA. 22209  
O1CY ATTN NUCLEAR MONITORING RESEARCH  
O1CY ATTN STRATEGIC TECH OFFICE

DEFENSE COMMUNICATION ENGINEER CENTER  
1860 WIEHLE AVENUE  
RESTON, VA. 22090  
O1CY ATTN CODE R410  
O1CY ATTN CODE R812

DEFENSE TECHNICAL INFORMATION CENTER  
CAMERON STATION  
ALEXANDRIA, VA. 22314  
O2CY

DIRECTOR  
DEFENSE NUCLEAR AGENCY  
WASHINGTON, D.C. 20305  
O1CY ATTN STVL  
O4CY ATTN TITL  
O1CY ATTN DDST  
O3CY ATTN RAAE

COMMANDER  
FIELD COMMAND  
DEFENSE NUCLEAR AGENCY  
KIRTLAND, AFB, NM 87115  
O1CY ATTN FCPR

DEFENSE NUCLEAR AGENCY  
SAO/DNA  
BUILDING 20676  
KIRTLAND AFB, NM 87115  
O1CY D.C. THORNBURG

DIRECTOR  
INTERSERVICE NUCLEAR WEAPONS SCHOOL  
KIRTLAND AFB, NM 87115  
O1CY ATTN DOCUMENT CONTROL

JOINT CHIEFS OF STAFF  
WASHINGTON, D.C. 20301  
O1CY ATTN J-3 WWMCCS EVALUATION OFFICE

DIRECTOR  
JOINT STRAT TGT PLANNING STAFF  
OFFUTT AFB  
OMAHA, NB 68113  
O1CY ATTN JLTW-2  
O1CY ATTN JPST G. GOETZ

CHIEF  
LIVERMORE DIVISION FLD COMMAND DNA  
DEPARTMENT OF DEFENSE  
LAWRENCE LIVERMORE LABORATORY  
P.O. BOX 808  
LIVERMORE, CA 94550  
O1CY ATTN FCPRL

COMMANDANT  
NATO SCHOOL (SHAPE)  
APO NEW YORK 09172  
O1CY ATTN U.S. DOCUMENTS OFFICER

UNDER SECY OF DEF FOR RSCH & ENGRG  
DEPARTMENT OF DEFENSE  
WASHINGTON, D.C. 20301  
O1CY ATTN STRATEGIC & SPACE SYSTEMS (OS)

WWMCCS SYSTEM ENGINEERING ORG  
WASHINGTON, D.C. 20305  
O1CY ATTN R. CRAWFORD

COMMANDER/DIRECTOR  
ATMOSPHERIC SCIENCES LABORATORY  
U.S. ARMY ELECTRONICS COMMAND  
WHITE SANDS MISSILE RANGE, NM 88002  
O1CY ATTN DELAS-EO F. NILES

DIRECTOR  
BMD ADVANCED TECH CTR  
HUNTSVILLE OFFICE  
P.O. BOX 1500  
HUNTSVILLE, AL 35807  
O1CY ATTN ATC-T MELVIN T. CAPPS  
O1CY ATTN ATC-O W. DAVIES  
O1CY ATTN ATC-R DON RUSS

PROGRAM MANAGER  
BMD PROGRAM OFFICE  
5001 EISENHOWER AVENUE  
ALEXANDRIA, VA 22333  
O1CY ATTN DACS-BMT J. SHEA

CHIEF C-E- SERVICES DIVISION  
U.S. ARMY COMMUNICATIONS CMD  
PENTAGON RM 1B269  
WASHINGTON, D.C. 20310  
O1CY ATTN C- E-SERVICES DIVISION

COMMANDER  
FRADCOM TECHNICAL SUPPORT ACTIVITY  
DEPARTMENT OF THE ARMY  
FORT MONMOUTH, N.J. 07703  
O1CY ATTN DRSEL-NL-RD H. BENNET  
O1CY ATTN DRSEL-PL-ENV H. BOMKE  
O1CY ATTN J.E. QUIGLEY

COMMANDER  
U.S. ARMY COMM-ELEC ENGRG INSTAL AGY  
FT. HUACHUCA, AZ 85613  
O1CY ATTN CCC-EMEO GEORGE LANE

COMMANDER  
U.S. ARMY FOREIGN SCIENCE & TECH CTR  
220 7TH STREET, NE  
CHARLOTTESVILLE, VA 22901  
O1CY ATTN DRXST-SD

COMMANDER  
U.S. ARMY MATERIAL DEV & READINESS CMD  
5001 EISENHOWER AVENUE  
ALEXANDRIA, VA 22333  
O1CY ATTN DRCLDC J.A. BENDER

COMMANDER  
U.S. ARMY NUCLEAR AND CHEMICAL AGENCY  
7500 BACKLICK ROAD  
BLDG 2073  
SPRINGFIELD, VA 22150  
O1CY ATTN LIBRARY

DIRECTOR  
U.S. ARMY BALLISTIC RESEARCH LABORATORY  
ABERDEEN PROVING GROUND, MD 21005  
O1CY ATTN TECH LIBRARY EDWARD BAICY

COMMANDER  
U.S. ARMY SATCOM AGENCY  
FT. MONMOUTH, NJ 07703  
O1CY ATTN DOCUMENT CONTROL

COMMANDER  
U.S. ARMY MISSILE INTELLIGENCE AGENCY  
REDSTONE ARSENAL, AL 35809  
O1CY ATTN JIM GAMBLE

DIRECTOR  
U.S. ARMY TRADOC SYSTEMS ANALYSIS ACTIVITY  
WHITE SANDS MISSILE RANGE, NM 88002  
O1CY ATTN ATAA-SA  
O1CY ATTN TCC/F. PAYAN JR.  
O1CY ATTN ATTA-TAC LTC J. HESSE

COMMANDER  
NAVAL ELECTRONIC SYSTEMS COMMAND  
WASHINGTON, D.C. 20360  
O1CY ATTN NAVALEX 034 T. HUGHES  
O1CY ATTN PME 117  
O1CY ATTN PME 117-T  
O1CY ATTN CODE 5011

COMMANDING OFFICER  
NAVAL INTELLIGENCE SUPPORT CTR  
4301 SUITLAND ROAD, BLDG. 5  
WASHINGTON, D.C. 20390  
O1CY ATTN MR. DUBBIN STIC 12  
O1CY ATTN NISC-50  
O1CY ATTN CODE 5404 J. GALET

COMMANDER  
NAVAL OCEAN SYSTEMS CENTER  
SAN DIEGO, CA 92152  
O1CY ATTN J. FERGUSON

NAVAL RESEARCH LABORATORY  
WASHINGTON, D.C. 20375  
01CY ATTN CODE 4700 S. L. Ossakow  
26 CYS IF UNCLASS. 1 CY IF CLASS)  
01CY ATTN CODE 4701 I Vitkovitsky  
01CY ATTN CODE 4780 J. Huba (100  
CYS IF UNCLASS, 1 CY IF CLASS)  
01CY ATTN CODE 7500  
01CY ATTN CODE 7550  
01CY ATTN CODE 7580  
01CY ATTN CODE 7551  
01CY ATTN CODE 7555  
01CY ATTN CODE 4730 E. MCLEAN  
01CY ATTN CODE 4108  
01CY ATTN CODE 4730 B. RIPIN  
20CY ATTN CODE 2628

COMMANDER  
NAVAL SEA SYSTEMS COMMAND  
WASHINGTON, D.C. 20362  
01CY ATTN CAPT R. PITKIN

COMMANDER  
NAVAL SPACE SURVEILLANCE SYSTEM  
DAHLGREN, VA 22448  
01CY ATTN CAPT J.H. BURTON

OFFICER-IN-CHARGE  
NAVAL SURFACE WEAPONS CENTER  
WHITE OAK, SILVER SPRING, MD 20910  
01CY ATTN CODE F31

DIRECTOR  
STRATEGIC SYSTEMS PROJECT OFFICE  
DEPARTMENT OF THE NAVY  
WASHINGTON, D.C. 20376  
01CY ATTN NSP-2141  
01CY ATTN Nssp-2722 FRED WIMBERLY

COMMANDER  
NAVAL SURFACE WEAPONS CENTER  
DAHLGREN LABORATORY  
DAHLGREN, VA 22448  
01CY ATTN CODE DF-14 R. BUTLER

OFFICER OF NAVAL RESEARCH  
ARLINGTON, VA 22217  
01CY ATTN CODE 465  
01CY ATTN CODE 461  
01CY ATTN CODE 402  
01CY ATTN CODE 420  
01CY ATTN CODE 421

COMMANDER  
AEROSPACE DEFENSE COMMAND/DC  
DEPARTMENT OF THE AIR FORCE  
ENT AFB, CO 80912  
01CY ATTN DC MR. LONG

COMMANDER  
AEROSPACE DEFENSE COMMAND/XPD  
DEPARTMENT OF THE AIR FORCE  
ENT AFB, CO 80912  
01CY ATTN XPDQQ  
01CY ATTN XP

AIR FORCE GEOPHYSICS LABORATORY  
HANSKOM AFB, MA 01731  
01CY ATTN OPR HAROLD GARDNER  
01CY ATTN LKB KENNETH S.W. CHAMPION  
01CY ATTN OPR ALVA T. STAIR  
01CY ATTN PHD JURGEN BUCHAU  
01CY ATTN PHD JOHN P. MULLEN

AF WEAPONS LABORATORY  
KIRTLAND AFT, NM 87117  
01CY ATTN SUL  
01CY ATTN CA ARTHUR H. GUENTHER  
01CY ATTN NTYCE 1LT. G. KRAJEI

AFTAC  
PATRICK AFB, FL 32925  
01CY ATTN TF/MAJ WILEY  
01CY ATTN TN

AIR FORCE AVIONICS LABORATORY  
WRIGHT-PATTERSON AFB, OH 45433  
01CY ATTN AAD WADE HUNT  
01CY ATTN AAD ALLEN JOHNSON

DEPUTY CHIEF OF STAFF  
RESEARCH, DEVELOPMENT, & ACQ  
DEPARTMENT OF THE AIR FORCE  
WASHINGTON, D.C. 20330  
01CY ATTN AFRDQ

HEADQUARTERS  
ELECTRONIC SYSTEMS DIVISION  
DEPARTMENT OF THE AIR FORCE  
HANSKOM AFB, MA 01731  
01CY ATTN J. DEAS

HEADQUARTERS  
ELECTRONIC SYSTEMS DIVISION/YSEA  
DEPARTMENT OF THE AIR FORCE  
HANSKOM AFB, MA 01732  
01CY ATTN YSEA

HEADQUARTERS  
ELECTRONIC SYSTEMS DIVISION/DC  
DEPARTMENT OF THE AIR FORCE  
HANSCOM AFB, MA 01731  
OICY ATTN DCKC MAJ J.C. CLARK

COMMANDER  
FOREIGN TECHNOLOGY DIVISION, AFSC  
WRIGHT-PATTERSON AFB, OH 45433  
OICY ATTN NICD LIBRARY  
OICY ATTN EITDP B. BALLARD

COMMANDER  
ROME AIR DEVELOPMENT CENTER, AFSC  
GRIFFISS AFB, NY 13441  
OICY ATTN DOC LIBRARY/TSLD  
OICY ATTN OCSE V. COYNE

SAMSO/SZ  
POST OFFICE BOX 92960  
WORLDWAY POSTAL CENTER  
LOS ANGELES, CA 90009  
(SPACE DEFENSE SYSTEMS)  
OICY ATTN SZJ

STRATEGIC AIR COMMAND/XPFS  
OFFUTT AFB, NB 68113  
OICY ATTN ADWATE MAJ BRUCE BAUER  
OICY ATTN NRT  
OICY ATTN DOK CHIEF SCIENTIST

SAMSO/SK  
P.O. BOX 92960  
WORLDWAY POSTAL CENTER  
LOS ANGELES, CA 90009  
OICY ATTN SKA (SPACE COMM SYSTEMS)  
M. CLAVIN

SAMSO/MN  
NORTON AFB, CA 92409  
(MINUTEMAN)  
OICY ATTN MNML

COMMANDER  
ROME AIR DEVELOPMENT CENTER, AFSC  
HANSCOM AFB, MA 01731  
OICY ATTN EEP A. LORENTZEN

DEPARTMENT OF ENERGY  
LIBRARY ROOM G-042  
WASHINGTON, D.C. 20545  
OICY ATTN DOC CON FOR A. LABOWITZ

DEPARTMENT OF ENERGY  
ALBUQUERQUE OPERATIONS OFFICE  
P.O. BOX 5400  
ALBUQUERQUE, NM 87115  
OICY ATTN DOC CON FOR D. SHERWOOD

EG&G, INC.  
LOS ALAMOS DIVISION  
P.O. BOX 809  
LOS ALAMOS, NM 85544  
OICY ATTN DOC CON FOR J. BREEDLOVE

UNIVERSITY OF CALIFORNIA  
LAWRENCE LIVERMORE LABORATORY  
P.O. BOX 808  
LIVERMORE, CA 94550  
OICY ATTN DOC CON FOR TECH INFO DEPT  
OICY ATTN DOC CON FOR L-389 R. OTT  
OICY ATTN DOC CON FOR L-31 R. HAGER  
OICY ATTN DOC CON FOR L-46 F. SEWARD

LOS ALAMOS NATIONAL LABORATORY  
P.O. BOX 1663  
LOS ALAMOS, NM 87545  
OICY ATTN DOC CON FOR J. WOLCOTT  
OICY ATTN DOC CON FOR R.F. TASCHEK  
OICY ATTN DOC CON FOR E. JONES  
OICY ATTN DOC CON FOR J. MALIK  
OICY ATTN DOC CON FOR R. JEFFRIES  
OICY ATTN DOC CON FOR J. ZINN  
OICY ATTN DOC CON FOR P. KEATON  
OICY ATTN DOC CON FOR D. WESTERVELT  
OICY ATTN D. SAPPENFIELD

SANDIA LABORATORIES  
P.O. BOX 5800  
ALBUQUERQUE, NM 87115  
OICY ATTN DOC CON FOR W. BROWN  
OICY ATTN DOC CON FOR A. THORNBROUGH  
OICY ATTN DOC CON FOR T. WRIGHT  
OICY ATTN DOC CON FOR D. DAHLGREN  
OICY ATTN DOC CON FOR 3141  
OICY ATTN DOC CON FOR SPACE PROJECT DIV

SANDIA LABORATORIES  
LIVERMORE LABORATORY  
P.O. BOX 969  
LIVERMORE, CA 94550  
OICY ATTN DOC CON FOR B. MURPHEY  
OICY ATTN DOC CON FOR T. COOK

OFFICE OF MILITARY APPLICATION  
DEPARTMENT OF ENERGY  
WASHINGTON, D.C. 20545  
OICY ATTN DOC CON DR. YO SONG

OTHER GOVERNMENT

DEPARTMENT OF COMMERCE  
NATIONAL BUREAU OF STANDARDS  
WASHINGTON, D.C. 20234  
O1CY (ALL CORRES: ATTN SEC OFFICER FOR)

INSTITUTE FOR TELECOM SCIENCES  
NATIONAL TELECOMMUNICATIONS & INFO ADMIN  
BOULDER, CO 80303  
O1CY ATTN A. JEAN (UNCLASS ONLY)  
O1CY ATTN W. UTLAUT  
O1CY ATTN D. CROMBIE  
O1CY ATTN L. BERRY

NATIONAL OCEANIC & ATMOSPHERIC ADMIN  
ENVIRONMENTAL RESEARCH LABORATORIES  
DEPARTMENT OF COMMERCE  
BOULDER, CO 80302  
O1CY ATTN R. GRUBB  
O1CY ATTN AERONOMY LAB G. REID

DEPARTMENT OF DEFENSE CONTRACTORS

AEROSPACE CORPORATION  
P.O. BOX 92957  
LOS ANGELES, CA 90009  
O1CY ATTN I. GARFUNKEL  
O1CY ATTN T. SALMI  
O1CY ATTN V. JOSEPHSON  
O1CY ATTN S. BOWER  
O1CY ATTN D. OLSEN

ANALYTICAL SYSTEMS ENGINEERING CORP  
5 OLD CONCORD ROAD  
BURLINGTON, MA 01803  
O1CY ATTN RADIO SCIENCES

AUSTIN RESEARCH ASSOC., INC.  
1901 RUTLAND DRIVE  
AUSTIN, TX 78758  
O1CY ATTN L. SLOAN  
O1CY ATTN R. THOMPSON

BERKELEY RESEARCH ASSOCIATES, INC.  
P.O. BOX 983  
BERKELEY, CA 94701  
O1CY ATTN J. WORKMAN  
O1CY ATTN C. PRETTIE  
O1CY ATTN S. BRECHT

BOEING COMPANY, THE  
P.O. BOX 3707  
SEATTLE, WA 98124  
O1CY ATTN G. KEISTER  
O1CY ATTN D. MURRAY  
O1CY ATTN G. HALL  
O1CY ATTN J. KENNEY

CHARLES STARK DRAPER LABORATORY, INC.  
555 TECHNOLOGY SQUARE  
CAMBRIDGE, MA 02139  
O1CY ATTN D.B. COX  
O1CY ATTN J.P. GILMORE

COMSAT LABORATORIES  
LINTHICUM ROAD  
CLARKSBURG, MD 20734  
O1CY ATTN G. HYDE

CORNELL UNIVERSITY  
DEPARTMENT OF ELECTRICAL ENGINEERING  
ITHACA, NY 14850  
O1CY ATTN D.T. FARLEY, JR.

ELECTROSPACE SYSTEMS, INC.  
BOX 1359  
RICHARDSON, TX 75080  
O1CY ATTN H. LOGSTON  
O1CY ATTN SECURITY (PAUL PHILLIPS)

EOS TECHNOLOGIES, INC.  
606 Wilshire Blvd.  
Santa Monica, Calif 90401  
O1CY ATTN C.B. GABBARD

ESL, INC.  
495 JAVA DRIVE  
SUNNYVALE, CA 94086  
O1CY ATTN J. ROBERTS  
O1CY ATTN JAMES MARSHALL

GENERAL ELECTRIC COMPANY  
SPACE DIVISION  
VALLEY FORGE SPACE CENTER  
GODDARD BLVD KING OF PRUSSIA  
P.O. BOX 8555  
PHILADELPHIA, PA 19101  
O1CY ATTN M.H. BORTNER SPACE SCI LAB

GENERAL ELECTRIC COMPANY  
P.O. BOX 1122  
SYRACUSE, NY 13201  
O1CY ATTN F. REIBERT



GENERAL ELECTRIC TECH SERVICES CO., INC.  
HMES  
COURT STREET  
SYRACUSE, NY 13201  
01CY ATTN G. MILLMAN

GEOPHYSICAL INSTITUTE  
UNIVERSITY OF ALASKA  
FAIRBANKS, AK 99701  
(ALL CLASS ATTN: SECURITY OFFICER)  
01CY ATTN T.N. DAVIS (UNCLASS ONLY)  
01CY ATTN TECHNICAL LIBRARY  
01CY ATTN NEAL BROWN (UNCLASS ONLY)

GTE SYLVANIA, INC.  
ELECTRONICS SYSTEMS GRP-EASTERN DIV  
77 A STREET  
NEEDHAM, MA 02194  
01CY ATTN DICK STEINHOF

HSS, INC.  
2 ALFRED CIRCLE  
BEDFORD, MA 01730  
01CY ATTN DONALD HANSEN

ILLINOIS, UNIVERSITY OF  
107 COBLE HALL  
150 DAVENPORT HOUSE  
CHAMPAIGN, IL 61820  
(ALL CORRES ATTN DAN MCCLELLAND)  
01CY ATTN K. YEH

INSTITUTE FOR DEFENSE ANALYSES  
1801 NO. BEAUREGARD STREET  
ALEXANDRIA, VA 22311  
01CY ATTN J.M. AEIN  
01CY ATTN ERNEST BAUER  
01CY ATTN HANS WOLFARD  
01CY ATTN JOEL BENGSTON

INTL TEL & TELEGRAPH CORPORATION  
500 WASHINGTON AVENUE  
NUTLEY, NJ 07110  
01CY ATTN TECHNICAL LIBRARY

JAYCOR  
11011 TORREYANA ROAD  
P.O. BOX 85154  
SAN DIEGO, CA 92138  
01CY ATTN J.L. SPERLING

JOHNS HOPKINS UNIVERSITY  
APPLIED PHYSICS LABORATORY  
JOHNS HOPKINS ROAD  
LAUREL, MD 20810  
01CY ATTN DOCUMENT LIBRARIAN  
01CY ATTN THOMAS POTEMRA  
01CY ATTN JOHN DASSOULAS

KAMAN SCIENCES CORP  
P.O. BOX 7463  
COLORADO SPRINGS, CO 80933  
01CY ATTN T. MEAGHER

KAMAN TEMPO-CENTER FOR ADVANCED STUDIES  
816 STATE STREET (P.O DRAWER QQ)  
SANTA BARBARA, CA 93102  
01CY ATTN DASIAC  
01CY ATTN WARREN S. KNAPP  
01CY ATTN WILLIAM MCNAMARA  
01CY ATTN B. GAMBILL

LINKABIT CORP  
10453 ROSELLE  
SAN DIEGO, CA 92121  
01CY ATTN IRWIN JACOBS

LOCKHEED MISSILES & SPACE CO., INC  
P.O. BOX 504  
SUNNYVALE, CA 94088  
01CY ATTN DEPT 60-12  
01CY ATTN D.R. CHURCHILL

LOCKHEED MISSILES & SPACE CO., INC.  
3251 HANOVER STREET  
PALO ALTO, CA 94304  
01CY ATTN MARTIN WALT DEPT 52-12  
01CY ATTN W.L. IMHOF DEPT 52-12  
01CY ATTN RICHARD G. JOHNSON DEPT 52-12  
01CY ATTN J.B. CLADIS DEPT 52-12

MARTIN MARIETTA CORP  
ORLANDO DIVISION  
P.O. BOX 5837  
ORLANDO, FL 32805  
01CY ATTN R. HEFFNER

M.I.T. LINCOLN LABORATORY  
P.O. BOX 73  
LEXINGTON, MA 02173  
01CY ATTN DAVID M. TOWLE  
01CY ATTN L. LOUGHLIN  
01CY ATTN D. CLARK

MCDONNELL DOUGLAS CORPORATION  
5301 BOLSA AVENUE  
HUNTINGTON BEACH, CA 92647  
01CY ATTN N. HARRIS  
01CY ATTN J. MOULE  
01CY ATTN GEORGE MROZ  
01CY ATTN W. OLSON  
01CY ATTN R.W. HALPRIN  
01CY ATTN TECHNICAL LIBRARY SERVICES

MISSION RESEARCH CORPORATION  
735 STATE STREET  
SANTA BARBARA, CA 93101  
01CY ATTN P. FISCHER  
01CY ATTN W.F. CREVIER  
01CY ATTN STEVEN L. GUTSCHE  
01CY ATTN R. BOGUSCH  
01CY ATTN R. HENDRICK  
01CY ATTN RALPH KILB  
01CY ATTN DAVE SOWLE  
01CY ATTN F. FAJEN  
01CY ATTN M. SCHEIBE  
01CY ATTN CONRAD L. LONGMIRE  
01CY ATTN B. WHITE

MISSION RESEARCH CORP.  
1720 RANDOLPH ROAD, S.E.  
ALBUQUERQUE, NEW MEXICO 87106  
01CY R. STELLINGWERF  
01CY M. ALME  
01CY L. WRIGHT

MITRE CORPORATION, THE  
P.O. BOX 208  
BEDFORD, MA 01730  
01CY ATTN JOHN MORGANSTERN  
01CY ATTN G. HARDING  
01CY ATTN C.E. CALLAHAN

MITRE CORP  
WESTGATE RESEARCH PARK  
1820 DOLLY MADISON BLVD  
MCLEAN, VA 22101  
01CY ATTN W. HALL  
01CY ATTN W. FOSTER

PACIFIC-SIERRA RESEARCH CORP  
12340 SANTA MONICA BLVD.  
LOS ANGELES, CA 90025  
01CY ATTN E.C. FIELD, JR.

PENNSYLVANIA STATE UNIVERSITY  
IONOSPHERE RESEARCH LAB  
318 ELECTRICAL ENGINEERING EAST  
UNIVERSITY PARK, PA 16802  
(NO CLASS TO THIS ADDRESS)  
01CY ATTN IONOSPHERIC RESEARCH LAB

PHOTOMETRICS, INC.  
4 ARROW DRIVE  
WOBBURN, MA 01801  
01CY ATTN IRVING L. KOFISKY

PHYSICAL DYNAMICS, INC.  
P.O. BOX 3027  
BELLEVUE, WA 98009  
01CY ATTN E.J. FREMOW

PHYSICAL DYNAMICS, INC.  
P.O. BOX 10367  
OAKLAND, CA 94610  
ATTN A. THOMSON

R & D ASSOCIATES  
P.O. BOX 9695  
MARINA DEL REY, CA 90291  
01CY ATTN FORREST GILMORE  
01CY ATTN WILLIAM B. WRIGHT, JR.  
01CY ATTN ROBERT F. LELEVIER  
01CY ATTN WILLIAM J. KARZAS  
01CY ATTN H. ORY  
01CY ATTN C. MACDONALD  
01CY ATTN R. TURCO  
01CY ATTN L. DeRAND  
01CY ATTN W. TSAI

RAND CORPORATION, THE  
1700 MAIN STREET  
SANTA MONICA, CA 90406  
01CY ATTN CULLEN CRAIN  
01CY ATTN ED BEDROZIAN

RAYTHEON CO.  
528 BOSTON POST ROAD  
SUDBURY, MA 01776  
01CY ATTN BARBARA ADAMS

RIVERSIDE RESEARCH INSTITUTE  
330 WEST 42nd STREET  
NEW YORK, NY 10036  
01CY ATTN VINCE TRAPANI

SCIENCE APPLICATIONS, INC.  
1150 PROSPECT PLAZA  
LA JOLLA, CA 92037

01CY ATTN LEWIS M. LINSON  
01CY ATTN DANIEL A. HAMLIN  
01CY ATTN E. FRIEMAN  
01CY ATTN E.A. STRAKER  
01CY ATTN CURTIS A. SMITH  
01CY ATTN JACK MCDUGALL

SCIENCE APPLICATIONS, INC  
1710 GOODRIDGE DR.  
MCLEAN, VA 22102  
ATTN: J. COCKAYNE

SRI INTERNATIONAL  
333 RAVENSWOOD AVENUE  
MENLO PARK, CA 94025

01CY ATTN DONALD NEILSON  
01CY ATTN ALAN BURNS  
01CY ATTN G. SMITH  
01CY ATTN R. TSUNODA  
01CY ATTN DAVID A. JOHNSON  
01CY ATTN WALTER G. CHESNUT  
01CY ATTN CHARLES L. RINO  
01CY ATTN WALTER JAYE  
01CY ATTN J. VICKREY  
01CY ATTN RAY L. LEADABRAND  
01CY ATTN G. CARPENTER  
01CY ATTN G. PRICE  
01CY ATTN R. LIVINGSTON  
01CY ATTN V. GONZALES  
01CY ATTN D. MCDANIEL

TECHNOLOGY INTERNATIONAL CORP  
75 WIGGINS AVENUE  
BEDFORD, MA 01730  
01CY ATTN W.P. BOQUIST

TOYON RESEARCH CO.  
P.O. Box 6890  
SANTA BARBARA, CA 93111  
01CY ATTN JOHN ISE, JR.  
01CY ATTN JOEL GARBARINO

TRW DEFENSE & SPACE SYS GROUP  
ONE SPACE PARK

REDONDO BEACH, CA 90278  
01CY ATTN R. K. PLEBUCH  
01CY ATTN S. ALTSCHULER  
01CY ATTN D. DEE  
01CY ATTN D/ STOCKWELL  
SNTF/1575

VISIDYNE  
SOUTH BEDFORD STREET  
BURLINGTON, MASS 01803  
01CY ATTN W. REIDY  
01CY ATTN J. CARPENTER  
01CY ATTN C. HUMPHREY

IONOSPHERIC MODELING DISTRIBUTION LIST  
(UNCLASSIFIED ONLY)

PLEASE DISTRIBUTE ONE COPY TO EACH OF THE FOLLOWING PEOPLE (UNLESS OTHERWISE NOTED)

NAVAL RESEARCH LABORATORY  
WASHINGTON, D.C. 20375  
Dr. P. MANGE - CODE 4101  
Dr. P. GOODMAN - CODE 4180

A.F. GEOPHYSICS LABORATORY  
L.G. HANSCOM FIELD  
BEDFORD, MA 01730  
DR. T. ELKINS  
DR. W. SWIDER  
MRS. R. SAGALYN  
DR. J.M. FORBES  
DR. T.J. KENESHEA  
DR. W. BURKE  
DR. H. CARLSON  
DR. J. JASPERSE

BOSTON UNIVERSITY  
DEPARTMENT OF ASTRONOMY  
BOSTON, MA 02215  
DR. J. AARONS

CORNELL UNIVERSITY  
ITHACA, NY 14850  
DR. W.E. SWARTZ  
DR. D. FARLEY  
DR. M. KELLEY

HARVARD UNIVERSITY  
HARVARD SQUARE  
CAMBRIDGE, MA 02138  
DR. M.B. McELROY  
DR. R. LINDZEN

INSTITUTE FOR DEFENSE ANALYSIS  
400 ARMY/NAVY DRIVE  
ARLINGTON, VA 22202  
DR. E. BAUER

MASSACHUSETTS INSTITUTE OF  
TECHNOLOGY  
PLASMA FUSION CENTER  
LIBRARY, NW16-262  
CAMBRIDGE, MA 02139

NASA  
GODDARD SPACE FLIGHT CENTER  
GREENBELT, MD 20771  
DR. K. MAEDA  
DR. S. CURTIS  
DR. M. DUBIN  
DR. N. MAYNARD - CODE 696

COMMANDER  
NAVAL AIR SYSTEMS COMMAND  
DEPARTMENT OF THE NAVY  
WASHINGTON, D.C. 20360  
DR. T. CZUBA

COMMANDER  
NAVAL OCEAN SYSTEMS CENTER  
SAN DIEGO, CA 92152  
MR. R. ROSE - CODE 5321

NOAA  
DIRECTOR OF SPACE AND  
ENVIRONMENTAL LABORATORY  
BOULDER, CO 80302  
DR. A. GLENN JEAN  
DR. G.W. ADAMS  
DR. D.N. ANDERSON  
DR. K. DAVIES  
DR. R.F. DONNELLY

OFFICE OF NAVAL RESEARCH  
800 NORTH QUINCY STREET  
ARLINGTON, VA 22217  
DR. G. JOINER

PENNSYLVANIA STATE UNIVERSITY  
UNIVERSITY PARK, PA 16802  
DR. J.S. NISBET  
DR. P.R. ROHRBAUGH  
DR. L.A. CARPENTER  
DR. M. LEE  
DR. R. DIVANY  
DR. P. BENNETT  
DR. F. KLEVANS

SCIENCE APPLICATIONS, INC.  
1150 PROSPECT PLAZA  
LA JOLLA, CA 92037  
DR. D.A. HAMLIN  
DR. E. FRIEMAN

STANFORD UNIVERSITY  
STANFORD, CA 94305  
DR. P.M. BANKS

U.S. ARMY ABERDEEN RESEARCH  
AND DEVELOPMENT CENTER  
BALLISTIC RESEARCH LABORATORY  
ABERDEEN, MD  
DR. J. HEIMERL

GEOPHYSICAL INSTITUTE  
UNIVERSITY OF ALASKA  
FAIRBANKS, AK 99701  
DR. L.E. LEE

UNIVERSITY OF CALIFORNIA,  
BERKELEY  
BERKELEY, CA 94720  
DR. M. HUDSON

UNIVERSITY OF CALIFORNIA  
LOS ALAMOS SCIENTIFIC LABORATORY  
J-10, MS-664  
LOS ALAMOS, NM 87545  
DR. M. PONGRATZ  
DR. D. SIMONS  
DR. G. BARASCH  
DR. L. DUNCAN  
DR. P. BERNHARDT  
DR. S.P. GARY

UNIVERSITY OF MARYLAND  
COLLEGE PARK, MD 20740  
DR. K. PAPADOPOULOS  
DR. E. OTT

JOHNS HOPKINS UNIVERSITY  
APPLIED PHYSICS LABORATORY  
JOHNS HOPKINS ROAD  
LAUREL, MD 20810  
DR. R. GREENWALD  
DR. C. MENG

UNIVERSITY OF PITTSBURGH  
PITTSBURGH, PA 15213  
DR. N. ZABUSKY  
DR. M. BIONDI  
DR. E. OVERMAN

UNIVERSITY OF TEXAS  
AT DALLAS  
CENTER FOR RESEARCH SCIENCES  
P.O. BOX 688  
RICHARDSON, TX 75080  
DR. R. HEELIS  
DR. W. HANSON  
DR. J.P. McCLURE

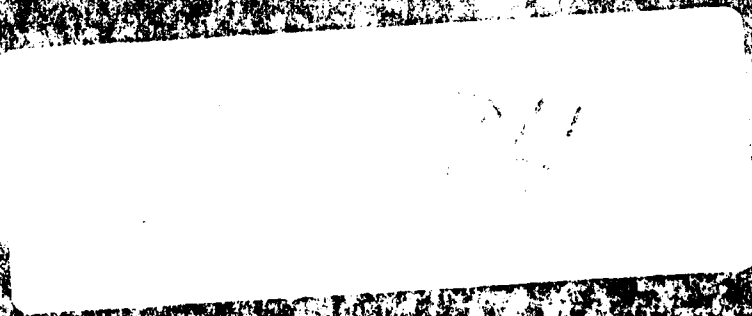
UTAH STATE UNIVERSITY  
4TH AND 8TH STREETS  
LOGAN, UTAH 84322  
DR. R. HARRIS  
DR. K. BAKER  
DR. R. SCHUNK  
DR. J. ST.-MAURICE

PHYSICAL RESEARCH LABORATORY  
PLASMA PHYSICS PROGRAMME  
AHMEDABAD 380 009  
INDIA  
P.J. PATHAK, LIBRARIAN

LABORATORY FOR PLASMA AND  
FUSION ENERGY STUDIES  
UNIVERSITY OF MARYLAND  
COLLEGE PARK, MD 20742  
JHAN VARYAN HELLMAN,  
REFERENCE LIBRARIAN

END

FILMED



DINIC