

AD-A141 244

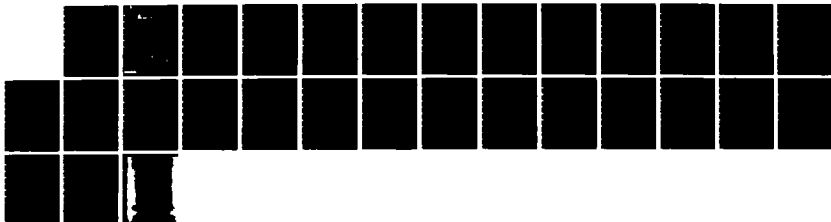
INFLUENCE OF MICROTURBULENCE ON EARLY TIME HANE
STRUCTURE(U) NAVAL RESEARCH LAB WASHINGTON DC J D HUBA
30 APR 84 NRL-MR-5305

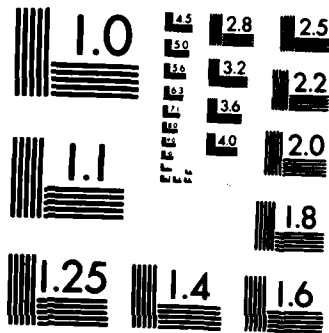
1/1

UNCLASSIFIED

F/G 12/1

NL





MICROCOPY RESOLUTION TEST CHART
 NATIONAL BUREAU OF STANDARDS-1963-A

2

NRL Memorandum Report 5305

AD-A141 244

Influence of Microturbulence on Early Time HANE Structure

J. D. HUBA

*Geophysical and Plasma Dynamics Branch
Plasma Physics Division*

April 30, 1984

This research was sponsored by the Defense Nuclear Agency under Subtask S99QMXBC,
work unit 00119 and work unit title "Early Time Dynamics."



DTIC
MAY 21 1984
A

DTIC FILE COPY

NAVAL RESEARCH LABORATORY
Washington, D.C.

Approved for public release; distribution unlimited.

84 05 21 085

REPORT DOCUMENTATION PAGE				
1a. REPORT SECURITY CLASSIFICATION UNCLASSIFIED		1d. RESTRICTIVE MARKINGS		
2a. SECURITY CLASSIFICATION AUTHORITY		3. DISTRIBUTION AVAILABILITY OF REPORT		
2b. DECLASSIFICATION/DOWNGRADING SCHEDULE		Approved for public release; distribution unlimited.		
4. PERFORMING ORGANIZATION REPORT NUMBER(S) NRL Memorandum Report 5305		5. MONITORING ORGANIZATION REPORT NUMBER(S)		
6a. NAME OF PERFORMING ORGANIZATION Naval Research Laboratory	6b. OFFICE SYMBOL <i>If applicable:</i>	7a. NAME OF MONITORING ORGANIZATION		
6c. ADDRESS (City, State and ZIP Code) Washington, DC 20375		7b. ADDRESS (City, State and ZIP Code)		
8a. NAME OF FUNDING/SPONSORING ORGANIZATION Defense Nuclear Agency	8b. OFFICE SYMBOL <i>If applicable:</i>	9. PROCUREMENT INSTRUMENT IDENTIFICATION NUMBER		
8c. ADDRESS (City, State and ZIP Code) Washington, DC 20305		10. SOURCE OF FUNDING NOS		
11. TITLE (Include Security Classification) (See page ii)		PROGRAM ELEMENT NO 62715H	PROJECT NO	TASK NO
				WORK UNIT NO 47-1944-04
12. PERSONAL AUTHOR(S) J. D. Huba				
13a. TYPE OF REPORT Interim	13b. TIME COVERED FROM TO	14. DATE OF REPORT (Yr., Mo., Day) April 30, 1984	15. PAGE COUNT 29	
16. SUPPLEMENTARY NOTATION This research was sponsored by the Defense Nuclear Agency under Subtask S99QMXBC, work unit 00119 and work unit title "Early Time Dynamics."				
17. COSATI CODES		18. SUBJECT TERMS (Continue on reverse if necessary and identify by block number)		
FIELD	GROUP	SUB GR		
			Microturbulence Rayleigh-Taylor instability	
			Early time structure Nonlinear mode coupling theory	
19. ABSTRACT (Continue on reverse if necessary and identify by block number) <i>This document shows</i> It is shown that microturbulence can have a direct effect on the evolution of interchange instabilities. A simple, two-fluid model of the Rayleigh-Taylor instability is considered which incorporates the effects of microturbulence through anomalous electron-ion and ion-ion collisions. A set of two-dimensional nonlinear mode coupling equations is developed. It is demonstrated that the intermediate wavelength regime of the instability can saturate by transferring energy from the growing modes to the damped modes because of the nonlinear E X B motion. A crucial point in the analysis is that anomalous electron-ion collisions provide the dissipation mechanism for the damped modes. Applications of this theory to early time HANE structuring are discussed.				
20. DISTRIBUTION AVAILABILITY OF ABSTRACT UNCLASSIFIED UNLIMITED <input checked="" type="checkbox"/> SAME AS RPT <input type="checkbox"/> DTIC USERS <input type="checkbox"/>		21. ABSTRACT SECURITY CLASSIFICATION UNCLASSIFIED		
22a. NAME OF RESPONSIBLE INDIVIDUAL J. D. Huba		22b. TELEPHONE NUMBER <i>(Include Area Code)</i> (202) 767-3630	22c. OFFICE SYMBOL Code 4780	

SECURITY CLASSIFICATION OF THIS PAGE

11. TITLE (Include Security Classification)

INFLUENCE OF MICROTURBULENCE ON EARLY TIME HANE STRUCTURE

SECURITY CLASSIFICATION OF THIS PAGE

CONTENTS

I. INTRODUCTION.....	1
II. DERIVATION OF MODE COUPLING EQUATIONS.....	2
III. ANALYSIS OF MODE COUPLING EQUATIONS.....	6
A. Linear Theory.....	6
1. Collisionless plasma ($v_{ei} = v_{ii} = 0$)	7
2. Collisional plasma ($v_{ei} \neq 0$ and $v_{ii} \neq 0$)	7
B. Nonlinear Theory.....	8
IV. DISCUSSION.....	12
Acknowledgments.....	14
References.....	15



Accession For	
NTIS GRA&I	<input checked="" type="checkbox"/>
DTIC TAB	<input type="checkbox"/>
Unannounced	<input type="checkbox"/>
Justification	
By _____	
Distribution/	
Availability Codes	
Dist	Special
AI	

INFLUENCE OF MICROTURBULENCE ON EARLY TIME HANE STRUCTURE

I. INTRODUCTION

An important issue to the Defense Nuclear Agency is understanding the physical processes involved in the structuring of the ionosphere following a HANE. The large-scale, long-lasting ionization irregularities produced by a HANE can adversely impact radar and communications systems (i.e., scintillations). Thus, it is crucial to understand the structuring mechanisms associated with HANES in order to obtain a predictive capability which could aid the operation of these systems in a nuclear environment. Recently, there has been renewed interest in the DNA community concerning early time HANE processes ($t \lesssim$ few sec). For example, DNA is presently funding a major laser experiment at NRL to explore the physics associated with early time HANE evolution.

Among the various early time processes to be understood, the occurrence of plasma microinstabilities and of structure producing processes (i.e., interchange instabilities) are two important areas. To our knowledge, these two areas have been treated somewhat independently of each other. The studies of microturbulence have been directed at explaining the coupling of debris and air plasmas (i.e., momentum exchange), and on the heating of the plasmas (i.e., energy exchange) (Lampe et al., 1975). On the other hand, the studies of early time structuring processes, which have been limited to date, do not directly include microturbulence effects. It should be noted that microturbulent processes have been included indirectly in an early time structure analysis. The work of Brecht et al. (1982) addresses the growth of Rayleigh-Taylor instabilities based upon the conditions prescribed by the microphysics (e.g., thickness, temperature, density within the coupling shell).

The purpose of this report is to suggest a direct effect of microturbulence on the evolution of early time interchange instabilities. Namely, that microinstabilities can provide a dissipation mechanism (via the anomalous transport properties associated with them) which can cause saturation of an interchange instability through a nonlinear mode coupling process. In order to demonstrate this point, we consider a simplified model. We consider a two-fluid plasma model (ions and electrons) which

Manuscript approved January 24, 1984.

incorporates a gravitational field (g) and a density inhomogeneity (∇n). We develop a set of nonlinear mode coupling equations for this situation and show that the intermediate regime of the instability can saturate by transferring energy from the growing modes to the damped modes because of the nonlinear electron $E \times B$ motion. The crucial point in the analysis is that anomalous electron-ion collisions provide the dissipation mechanism for the damped modes.

The organization of the paper is as follows. In the next section we derive the nonlinear mode equations. In Section III we present the results for a two mode coupling process. Finally, in Section IV we discuss the implications of our theory for early time HANE processes and describe our future efforts in this area.

II. DERIVATION OF MODE COUPLING EQUATIONS

The geometry and plasma configuration used in the analysis are shown in Fig. 1. We take the ambient magnetic field to be in the z direction ($\underline{B} = B \hat{e}_z$), and the density to be inhomogeneous in the x direction ($n = n(x)$). The fundamental assumptions used in the analysis are the following. We assume perturbed quantities to be proportional to $\exp[i(k_x x + k_y y - \omega t)]$ with $k_x L \gg 1$, $k_y L \gg 1$, $k_x \rho_i \ll 1$, $k_y \rho_i \ll 1$, and $\omega \ll \Omega_i$ where $L = (\partial \ln n / \partial x)^{-1}$ is the density gradient scale length $\rho_i = (T_i / m_i)^{1/2} / \Omega_i$ is the mean ion Larmor radius, and $\Omega_i = eB / m_i c$ is the ion cyclotron frequency. We consider a weakly collisional plasma such that $\nu_{ei} / \Omega_e \ll 1$, $\nu_{ie} / \Omega_i \ll 1$, and $\nu_{ii} / \Omega_i \ll 1$ where $\nu_{\alpha\beta}$ represents a collision frequency between the α and β species, and $\Omega_e = eB / m_e c$ is the electron cyclotron frequency. Here, the collisions are attributed to wave-particle interactions, i.e., anomalous collisions. Finally, we assume quasi-neutrality ($n_e \approx n_i$).

The equations used in the analysis are continuity, momentum transfer, and charge conservation:

$$\frac{\partial n}{\partial t} + \nabla \cdot (n \underline{v}_\alpha) = 0 \quad (1)$$

$$0 = -\frac{e}{m_e} \left(-\nabla \phi + \frac{1}{c} \underline{v}_e \times \underline{B} \right) - v_e^2 \frac{\nabla n}{n} - \nu_{ei} (\underline{v}_e - \underline{v}_i) \quad (2)$$

$$\frac{d\underline{v}_i}{dt} = \frac{e}{m_i} \left(-\nabla \phi + \frac{1}{c} \underline{v}_i \times \underline{B} \right) + g - v_i^2 \frac{\nabla n}{n} - \nu_{ie} (\underline{v}_i - \underline{v}_e) - \frac{1}{nm_i} \nabla \cdot \underline{\pi}_i \quad (3)$$

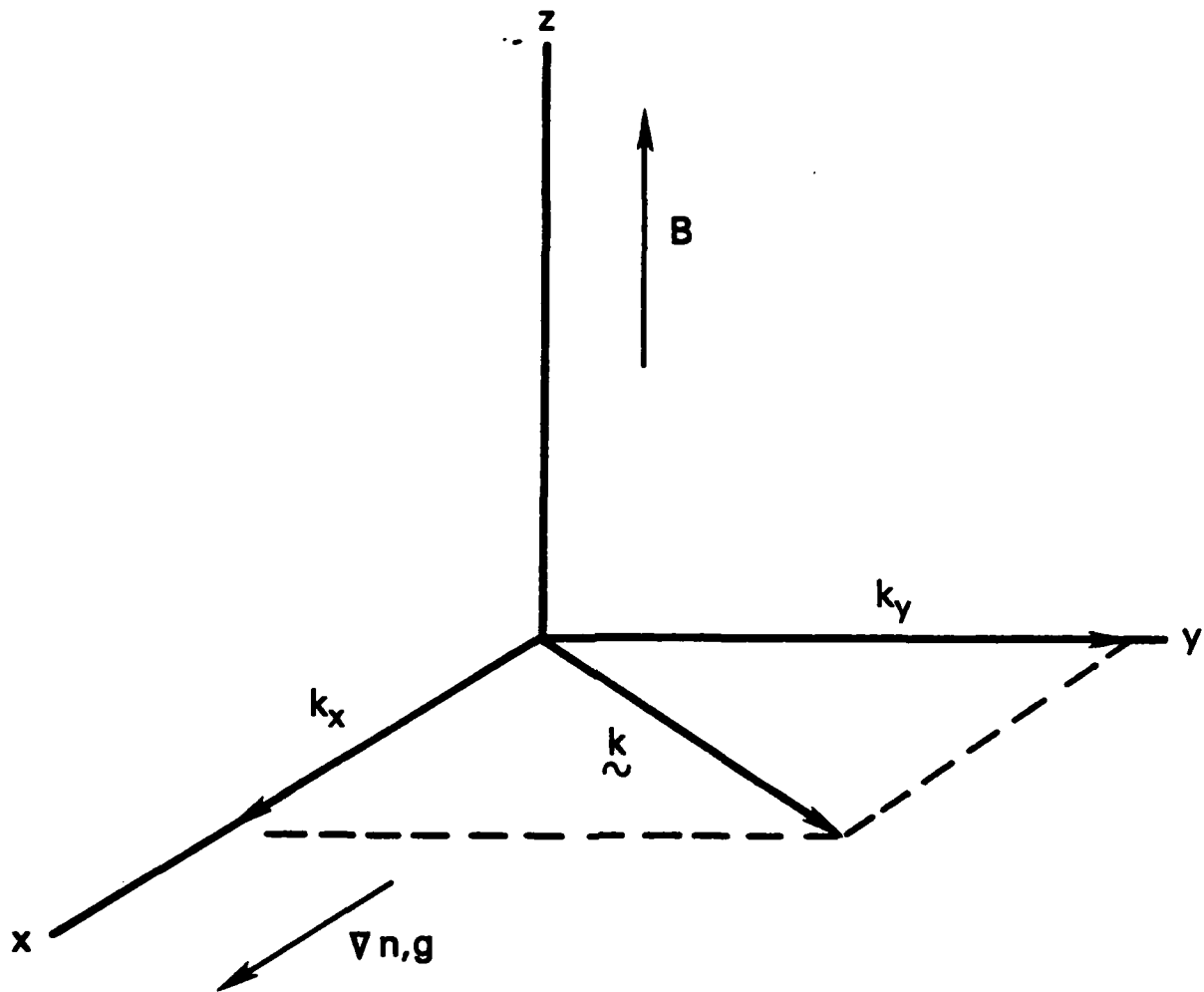


Figure 1: Plasma configuration and slab geometry. The magnetic field is in the z-direction ($\underline{B} = B \hat{e}_z$), the density gradient and gravity are in the x-direction ($\nabla n = \partial n / \partial x \hat{e}_x$ and $g = g \hat{e}_x$), and the wave vector is in the xy plane transverse to B .

$$\nabla \cdot \underline{J} = \nabla \cdot [n(\underline{v}_i - \underline{v}_e)] = 0 \quad (4)$$

where α denotes species (e,i), $v_{\alpha} = (T_{\alpha}/m_{\alpha})^{1/2}$ is the thermal velocity, and $\underline{\pi}_i$ is the ion stress tensor such that (Stix, 1969)

$$\begin{aligned} \frac{1}{nm_i} \nabla \cdot \underline{\pi}_i = & -\frac{1}{2} \Omega_i \rho_i^2 [(\nabla^2 + \frac{\nabla n}{n} \cdot \nabla) \underline{v}_i \times \hat{e}_z + (\hat{e}_z \times \frac{\nabla n}{n} \cdot \nabla) \underline{v}_i] \\ & - 0.3 v_{ii} \rho_i^2 [(\nabla^2 + \frac{\nabla n}{n} \cdot \nabla) \underline{v}_i - (\hat{e}_z \times \frac{\nabla n}{n} \cdot \nabla) \underline{v}_i \times \hat{e}_z]. \end{aligned} \quad (5)$$

The first term in Eq. (5) represents finite ion Larmor radius corrections (Roberts and Taylor, 1962), while the second term represents ion viscosity effects (i.e., shear stress). The compressional stress term in Eq. (5) has been neglected since it is smaller by a factor $k\rho_i$ than the first two terms (Stix, 1969).

To lowest order the equilibrium particle drifts are given by (from Eqs. (2) and (3))

$$\underline{v}_{e0} = -v_{de} \hat{e}_y \quad (6)$$

$$\underline{v}_{i0} = (v_{di} + v_g) \hat{e}_y \quad (7)$$

where $v_{d\alpha} = (v_{\alpha}^2/\Omega_{\alpha}) \partial \ln n / \partial x$ is the diamagnetic drift velocity of species α and $v_g = -g/\Omega_i$ is the ion gravitational drift velocity.

We now perturb Eqs. (1) - (4) about this equilibrium and let $n = n_0 + \delta n$, $\phi = \delta \phi$, and $\underline{v}_{\alpha} = \underline{v}_{\alpha 0} + \delta \underline{v}_{\alpha 1} + \delta \underline{v}_{\alpha 2}$. Here, $\delta \underline{v}_{\alpha 1}$ is the first order velocity perturbation and $\delta \underline{v}_{\alpha 2}$ is the second order velocity perturbation (i.e., proportional to small factors such as v_{ei}/Ω_e , v_{ie}/Ω_i , v_{ii}/Ω_i , $k^2 \rho_i^2$, $\Omega_i^{-1} d/dt$). The first order perturbed velocities are

$$\delta \underline{v}_{e1} = -\frac{v_e^2}{\Omega_e} \nabla \left(\frac{e\delta\phi}{T_e} - \frac{\delta n}{n_0} \right) \times \hat{e}_z \quad (8)$$

$$\delta \underline{v}_{i1} = -\frac{v_i^2}{\Omega_i} \nabla \psi \times \hat{e}_z \quad (9)$$

where $\psi = e\delta\phi/T_i + \delta n/n_0$.

The second order velocities are

$$\delta v_{e2} = -\frac{v_{ei}}{\Omega_e} \frac{v_i^2}{\Omega_i} \left(1 + \frac{T_e}{T_i}\right) \nabla \frac{\delta n}{n_0} \quad (10)$$

$$\begin{aligned} \delta v_{i2} = & -\rho_i^2 \left(\frac{\partial}{\partial t} + v_{i0} \cdot \nabla \right) \nabla \psi - v_{ie} \rho_i^2 \left(1 + \frac{T_e}{T_i}\right) \nabla \frac{\delta n}{n_0} \\ & + \rho_i^2 \frac{1}{2} \frac{v_i^2}{\Omega_i} \left[(\nabla^2 + \frac{\nabla n_0}{n_0} \cdot \nabla) \nabla \psi \times \hat{e}_z + \left(\hat{e}_z \times \frac{\nabla n_0}{n_0} \cdot \nabla \right) \nabla \psi \right] \\ & + 0.3 \rho_i^2 \frac{v_{ii}}{\Omega_i} \frac{v_i^2}{\Omega_i} \left[(\nabla^2 + \frac{\nabla n_0}{n_0} \cdot \nabla) \nabla \psi - \left(\hat{e}_z \times \frac{\nabla n_0}{n_0} \cdot \nabla \right) \nabla \psi \times \hat{e}_z \right] \end{aligned} \quad (11)$$

Substituting Eqs. (8) - (11) into the electron continuity (Eq. (1)) and charge conservation equations (Eq. (4)), we arrive at the coupled set of equations for δn and $\delta \phi$

$$\frac{\partial}{\partial t} \frac{\delta n}{n_0} - \frac{v_i^2}{\Omega_i} \nabla \frac{e\delta\phi}{T_i} \times \hat{e}_z \cdot \frac{\nabla n_0}{n_0} - D_e \nabla^2 \frac{\delta n}{n_0} = \frac{v_i^2}{\Omega_i} \nabla \frac{e\delta\phi}{T_i} \times \hat{e}_z \cdot \nabla \frac{\delta n}{n_0} \quad (12)$$

and

$$\frac{\xi}{\Omega_i} \times \hat{e}_z \cdot \nabla \frac{\delta n}{n_0} - \rho_i^2 \left[\left(\frac{\partial}{\partial t} + \frac{\xi}{\Omega_i} \times \hat{e}_z \cdot \nabla \right) \nabla^2 - 0.3 \frac{v_i^2}{\Omega_i} \frac{v_{ii}}{\Omega_i} \nabla^4 \right] \left(\frac{e\delta\phi}{T_i} + \frac{\delta n}{n_0} \right) = 0 \quad (13)$$

where $D_e = v_{ei} \rho_{es}^2$ is the electron diffusion coefficient and $\rho_{es}^2 = (v_i^2 / \Omega_i / \Omega_e) (1 + T_e / T_i)$.

Thus, Eqs. (12) and (13) represent nonlinear mode coupling equations for the Rayleigh-Taylor instability in the intermediate wavelength regime (i.e., $kL \gg 1$ and $k\rho_i \ll 1$). The physics contained in Eqs. (12) and (13) is described as follows. The second term on the LHS of Eq. (12) leads to growth of the density perturbation while the third term leads to damping because of electron diffusion. The term on the RHS of Eq. (12) is the electron $E \times B$ nonlinearity. The first term on the LHS of Eq. (13) represents the differential motion of the electrons and ions in the y direction because of gravity. The first term in brackets is the ion polarization term while the second term contains ion viscosity effects.

III. ANALYSIS OF MODE COUPLING EQUATIONS

A. Linear Theory

We linearize Eqs. (12) and (13) by neglecting the electron $E \times B$ nonlinearity in Eq. (12). We assume that perturbations are proportional to $\exp[i(k_x x + k_y y - \omega t)]$. From Eq. (12), it can be shown that

$$\frac{\delta n}{n_0} = - \frac{k_y v_i (\rho_i / L)}{\omega + i v_{ei} k_{\rho_i}^2} \frac{e \delta \phi}{T_i} \quad (14)$$

where $L = (\nabla n_0 / n_0)^{-1} = (\partial \ln n_0 / \partial x)^{-1}$ is the scale length of the density gradient. Similarly, from Eq. (13) it can be shown that

$$- [\omega_g + k_{\rho_i}^2 (\omega + \omega_g + i 0.3 v_{ii} k_{\rho_i}^2)] \frac{\delta n}{n_0} = k_{\rho_i}^2 [\omega + \omega_g + i 0.3 v_{ii} k_{\rho_i}^2] \frac{e \delta \phi}{T_i} \quad (15)$$

where $\omega_g = k_y g / \Omega_i$. Combining Eqs. (14) and (15), we obtain the linear dispersion equation

$$\omega^2 + b\omega + c = 0 \quad (16)$$

where

$$b = -k_y V_{10} + i(v_{ei} k_{\rho_i}^2 + 0.3 v_{ii} k_{\rho_i}^2) \quad (17)$$

$$c = -\frac{k_y^2 g}{k^2 L} - [k_y \rho_i (\rho_i / L) \Omega_i - i v_{ei} k_{\rho_i}^2] \times \quad (18)$$

$$[-k_y V_g + i 0.3 v_{ii} k_{\rho_i}^2]$$

and $V_{10} = V_{di} + V_g$, $V_{di} = v_i^2 / \Omega_i L$ and $V_g = -g / \Omega_i$. Equation (16) has the solution

$$\omega = -b/2 \pm (b^2/4 - c)^{1/2} \quad (19)$$

which is rather messy given the complexity of b and c (Eqs. (17) and (18)). In order to gain insight into the solution of Eq. (19), it is best to consider several limiting cases.

1. Collisionless plasma ($v_{ei} = v_{ii} = 0$)

In the collisionless limit, the dispersion equation is given by

$$\omega^2 - k_y v_{i0} \omega - \frac{k_y^2}{k^2} \frac{g}{L} = 0 \quad (20)$$

which is a well known result (Roberts and Taylor, 1962). The solution to Eq. (20) is

$$\omega = \frac{1}{2} k_y v_{i0} \pm \frac{1}{2} \left[k_y^2 v_{i0}^2 + 4 \frac{k_y^2}{k^2} \frac{g}{L} \right]^{1/2} \quad (21)$$

In the limit $k^2 v_{i0}^2 \ll 4g/L$, the eigenfrequency is

$$\omega = \pm \frac{k_y}{k} \left(\frac{g}{L} \right)^{1/2} \quad (22)$$

so that instability results if g and ∇n are oppositely directed, i.e., $g/L < 0$. On the other hand, in the limit $k^2 v_{i0}^2 > 4g/L$, the mode becomes stable ($\gamma = 0$) and propagating ($\omega_r \sim k_y v_{i0}$). Since it is generally the case that $v_{i0} = v_{di} = (\rho_i/L)v_i$, the stabilization criterion is roughly

$$k^2 \rho_i^2 > 4gL/v_i^2 \quad (23)$$

and is therefore known as 'finite Larmor radius stabilization'. An important point is that the stable modes have $\gamma = 0$ and are not damped, i.e., $\gamma < 0$. This is a crucial consideration in the mode coupling saturation mechanism since damped modes are required as energy sinks.

2. Collisional plasma ($v_{ei} \neq 0$ and $v_{ii} \neq 0$)

We now consider the strong collision limit given by $v_{ii} k^2 \rho_i^2 \gg \omega$, $k_y v_{i0}$. For this case the dispersion equation

$$i\omega - 0.3 v_{ii} k^2 \rho_i^2 = \frac{k_y^2}{k^2} \frac{g}{L} + 0.3 v_{ii} k^2 \rho_i^2 v_{ei} k^2 \rho_{es}^2 \quad (24)$$

which has the solution

$$\omega = -i \left[\frac{k_y^2}{k^2} \frac{g/L}{0.3 v_{ii} k_{\rho i}^2} + v_{ei} k_{\rho es}^2 \right] \quad (25)$$

Again instability can result for $g/L < 0$ (oppositely directed g and ∇n) as long as

$$\frac{k_y^2}{k^2} \frac{|g/L|}{0.3 v_{ii} k_{\rho i}^2} > v_{ei} k_{\rho es}^2. \quad (26)$$

In the opposite limit,

$$v_{ei} k_{\rho es}^2 > \frac{k_y^2}{k^2} \frac{|g/L|}{0.3 v_{ii} k_{\rho i}^2} \quad (27)$$

the modes are damped, i.e., $\gamma < 0$. The important point is that the electron-ion collision term provides a dissipation mechanism and can produce modes with a negative growth rate. Hence, anomalous electron-ion collisions can produce damped modes in the collisional limit ($\gamma < 0$). This is in contrast to collisionless finite Larmor radius stabilization which produces stable propagating waves ($\gamma = 0$). Finally, we note the similarity of Eq. (25) to that of the usual collisional Rayleigh-Taylor mode which has a growth rate $\gamma = -(k_y^2/k^2)(g/Lv_{in})$. In the present case, the quantity $0.3 v_{ii} k_{\rho i}^2$ replaces v_{in} (Hudson and Kennel, 1975).

B. Nonlinear Theory

To illustrate the nonlinear saturation of the Rayleigh-Taylor instability we consider the collisional limit and follow the analysis prescribed in Rognlein and Weinstock (1974). Mathematically, this analysis closely follows that of Chaturvedi and Ossakow (1977), but the underlying physical concepts and applications are substantially different. The equations of interest are

$$\frac{\partial}{\partial t} \frac{\delta n}{n_0} - \frac{v_i^2}{\Omega_i} \nabla \frac{e\delta\phi}{T_i} \times \hat{e}_z \cdot \frac{\nabla n_0}{n_0} - D_e \nabla^2 \frac{\delta n}{n_0} = \frac{v_i^2}{\Omega_i} \nabla \frac{e\delta\phi}{T_i} \times \hat{e}_z \cdot \nabla \frac{\delta n}{n_0} \quad (28)$$

and

$$\frac{\xi}{\Omega_i} \times \hat{e}_z \cdot \nabla \frac{\delta n}{n_0} + 0.3 v_{ii} \rho_i^4 \nabla^4 \left(\frac{e\delta\phi}{T_i} + \frac{\delta n}{n_0} \right) = 0 \quad (29)$$

where Eq. (28) is the same as Eq. (12) and Eq. (29) follows from Eq. (13) by neglecting ion inertial effects.

Equation (28) is linear and one can obtain a simple relationship between $\delta\phi$ and δn based upon it, namely,

$$\frac{e\delta\phi}{T_i} = -i\Gamma \frac{\delta n}{n_0} \quad (30)$$

where

$$\Gamma = -\frac{g}{0.3 v_{ii} k_{\rho i}^2} \frac{k_y \Omega_i}{k_{\rho i}^2 v_i^2} \quad (31)$$

and we have assumed $k_y L > \Omega_i / v_{ii}$.

Equation (27) is nonlinear and can be rewritten as

$$\frac{\partial}{\partial t} \frac{\delta n}{n_0} = \gamma \frac{\delta n}{n_0} + \frac{v_i^2}{\Omega_i} \nabla \frac{e\delta\phi}{T_i} \times \hat{e}_z \cdot \nabla \frac{\delta n}{n_0} \quad (32)$$

where γ is the net linear growth (or damping) of modes. The term γ results from a combination of the second term on the LHS of Eq. (28) (the growing term) and the third term on the LHS of Eq. (28) (the damping term), and is given by

$$\gamma = \frac{k_y^2}{k^2} \frac{|g/L|}{0.3 v_{ii} k_{\rho i}^2} - v_{ei} k_{\rho es}^2 \quad (33)$$

for $g/L < 0$.

We substitute a two-dimensional perturbation of the form

$$\frac{\delta n}{n_0} = A_{1,1} \sin(k_y y - \omega t) \cos k_x x \quad (34)$$

and (from Eq. (29))

$$\frac{e\delta\phi}{T_i} = \Gamma A_{1,1} \cos(k_y y - \omega t) \cos k_x x \quad (35)$$

into the nonlinear term of Eq. (32). This procedure yields the following result

$$\frac{v_i^2}{\Omega_i} \nabla \frac{e\delta\phi}{r_i} \times \hat{e}_z \cdot \nabla \frac{\delta n}{n_0} = \frac{g}{0.6 v_{ii} k_{\rho i}^2} \frac{k_y^2}{k^2} k_x A_{1,1} \sin 2 k_x x, \quad (36)$$

that is, a second spatial harmonic in the x-direction (along the density gradient) is produced. Thus, we consider a general perturbation of the form

$$\frac{\delta n}{n_0} = A_{1,1} \sin(k_y y - \omega t) \cos k_x x + A_{2,0} \sin 2 k_x x \quad (37)$$

Substituting Eq. (37) into Eq. (32) and making use of Eq. (30), we arrive at the following set of coupled nonlinear differential equations for the mode amplitudes

$$\frac{\partial}{\partial t} A_{1,1} = \gamma_{1,1} A_{1,1} - \alpha A_{1,1} A_{2,0} \quad (38)$$

and

$$\frac{\partial}{\partial t} A_{2,0} = \gamma_{2,0} A_{2,0} + \frac{\alpha}{2} A_{1,1}^2 \quad (39)$$

where the coupling coefficient is

$$\alpha = k_x \frac{k_y^2}{k^2} \frac{g}{0.3 v_{ii} k_{\rho i}^2} \quad (40)$$

The mode $A_{2,0}$ is linearly damped (i.e., $\gamma_{2,0} < 0$) which is clear from Eq. (33) since $k_y = 0$ for this mode. Thus, the action of the nonlinear $E \times B$ term is to transfer energy from a growing mode ($A_{1,1}$) to a damped mode ($A_{2,0}$) via a mode coupling interaction. This is shown schematically in Fig. 2. It is possible then to set up a steady state situation such that $\partial A_{1,1}/\partial t = 0$ and $\partial A_{2,0}/\partial t = 0$. One can show that this results in the following set of steady state amplitudes

$$A_{2,0} = \frac{\gamma_{1,1}}{\alpha} = \frac{1}{k_x L} \quad (41)$$

and

$$\begin{aligned}
A_{1,1} &= \left(-\frac{2|\gamma_{2,0}|}{\alpha} A_{2,0} \right)^{1/2} \\
&= \left(\frac{k_y^2 v_{ei} k_{pe}^2 - 0.3 v_{ii} k_{pi}^2}{g L k_x^2} \right)^{1/2} \quad (42)
\end{aligned}$$

We point out that for $|\gamma_{1,1}| > |\gamma_{2,0}|$, one finds that $A_{2,0} > A_{1,1}$ so that the damped modes can be nonlinearly driven to larger amplitudes than the linear driven modes. These results are similar to those of Rognein and Weinstock (1974), Chaturvedi and Ossakow (1977) and Chaturvedi and Ossakow (1979). Finally, although a rather simple two-mode analysis has been presented, numerical simulations using many modes for both the collisional Rayleigh-Taylor and $E \times B$ instability are consistent with this analysis (Keskinen et al., 1980a,b).

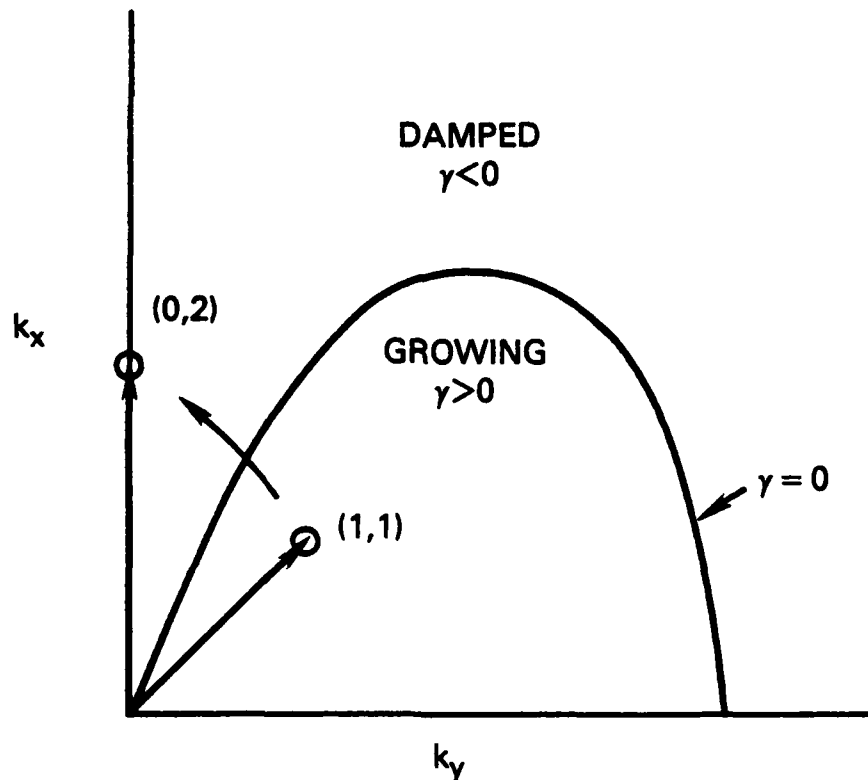


Figure 2: Schematic of mode coupling process. The growing and damped modes are shown in k space. The coupling of the growing (1,1) mode and the damped (0,2) mode is also shown.

IV. DISCUSSION

The purpose of this paper has been to suggest an important influence of microturbulence on the early time structuring of a HANE. We consider the question, how do anomalous collisions produced by microturbulence affect the development of interchange instabilities? To answer this question, we have adopted a simple two-fluid model of the intermediate wavelength Rayleigh-Taylor instability as a test problem. Specifically, we have developed a two-dimensional nonlinear mode coupling theory of the Rayleigh-Taylor instability in the presence of microturbulence. The primary effect of the microturbulence is to generate anomalous collisions between electrons and ions, as well as ions and ions; an effect considered to be very important in the early time evolution of a HANE. Examples of instabilities investigated for early time HANE applications are the ion-ion counter-streaming instabilities, the modified-two-stream instability, the ion acoustic instability, and the beam cyclotron instability (Lampe et al., 1975). Lampe et al. (1975) have shown that these instabilities can produce significant anomalous collisions between particles, e.g., $v_{ei} \lesssim \omega_{pe}$ for the modified two stream and $v_{ii} \lesssim \omega_{lh}$ for the magnetized ion-ion counter-streaming instabilities where ω_{pe} is the electron plasma frequency and ω_{lh} is the lower hybrid frequency. We note that in the model considered, the concept of anomalous ion-ion collisions for a single ion fluid is unclear, i.e., anomalous collisionless viscosity is not well understood, but it is a valid concept for a multi-ion species plasma. Thus, as noted in the introduction, the problem addressed in this paper should be considered as an idealized test problem which highlights a potentially important effect in early time HANE physics.

The major result of this work is that the intermediate wavelength modes of the Rayleigh-Taylor instability can be stabilized via a mode coupling process in the collisional regime. Basically, wave energy is transferred nonlinearly from growing modes to damped modes, and a steady state can result. Anomalous electron-ion collisions play a crucial role in that they provide a dissipation mechanism which produces a set of damped modes. This is in contrast to stabilization of the instability due to finite Larmor radius effects which does not produce damped modes, but rather propagating modes with $\gamma = 0$.

A considerable amount of work remains to be done on this problem. Within the context of the simple model developed in this paper two avenues of research are presently being pursued. First, numerical analysis is underway to consider the many-mode situation which is more realistic. In this analysis, a pseudo-spectral code is being used which has proved valuable in understanding the mode coupling stabilization of the lower-hybrid-drift instability (Drake et al., 1983a,b). Second, the effects of ion inertia need to be included self-consistently to understand the transition from the collisionless to collisional regime. Again, the numerical techniques being used allow for this.

While the above described work will provide a better understanding of the nonlinear stabilization of the Rayleigh-Taylor instability, it does not directly apply to early time HANE phenomena. It does provide insight into potentially important effects, and the development of relevant numerical tools. However, considerably different models need to be developed for early time HANE behavior. The types of issues that should be addressed are as follows:

1. A stability analysis of early time HANE has been performed by Brecht and Papadopoulos (1979). They considered the development of a Rayleigh-Taylor instability driven by forces associated with laminar-like acceleration of ions within the coupling shell and with the curvature of the magnetic field lines. Another effect not considered in Brecht and Papadopoulos (1979) is the deceleration of the coupling shell due to line tying currents to the conducting ionosphere (Pilipp, 1971; Fedder, 1980) which could also lead to a Rayleigh-Taylor instability. The point is that there are several mechanisms that could produce early time structure instabilities and that a nonlinear analysis of these instabilities, incorporating microturbulence via anomalous collisions, is warranted. However, this is somewhat more complicated than the present calculation since at least two ion species are required in the analysis, and electromagnetic effects may need to be included.

2. Another possibility for the generation of structure (i.e., density irregularities) in early time HANE is the onset of the Richtmeyer-Meshkov instability (Richtmeyer, 1960; Andronov et al., 1976). This instability grows linearly with time, as opposed to exponentially, and can occur when a

shock wave passes through an irregular (corrugated) interface from a less dense to a more dense fluid. The turbulence generated from this instability may also be influenced by microturbulence, as in the case of the more standard interchange instability case.

3. It has also been suggested that the weapon debris is 'pre-structured' by the 'nuts and bolts' of the device itself (Chesnut, private communication). The subsequent evolution of this structure could also be affected by microturbulence. For example, the wavenumber spectrum of the turbulence could be altered by the microturbulence through a mode coupling process.

In conclusion, we have shown that microturbulence, via its associated anomalous collisional effects, can influence the nonlinear development of the collisional Rayleigh-Taylor instability. Namely, it can lead to the stabilization of the intermediate wavelength modes through a two-dimensional mode coupling process. Anomalous electron-ion collisions provide the needed dissipation mechanism. Thus, microturbulence could play an important role in the development of structure for early time HANE phenomena. We have given some examples of the structure problems that could be affected by microturbulence and are relevant to early time HANE processes. Admittedly, some of these ideas are speculative at this time, but it is clear that further research is needed in this area.

Acknowledgments

I wish to thank Drs. P. Chaturvedi, A. Hassam and M. Keskinen for helpful conversations. This work has been supported by the Defense Nuclear Agency under MIPR 83-693.

References

- Andronov, V.A., S.M. Bakrakh, E.E. Meshkov, V.N. Mokhov, V.V. Nikiforov, A.V. Pevnitskii, and A.I. Tolshmyakov, Turbulent mixing at contact surface accelerated by shock waves, Sov. Phys. JETP, 44, 424, 1976.
- Brecht, S.H. and K. Papadopoulos, "Cross Field Jetting of Energetic Ions Produced By Raleigh-Taylor Instability," NRL Memo 4068, 1979. (AD-A078 027)
- Brecht, S.H., E. Hyman, and P.J. Palmadesso, Structuring caused by Rayleigh-Taylor instability," NRL Memo 4790, 1982.
- Chaturvedi, P.K., and S.L. Ossakow, Nonlinear theory of the collisional Rayleigh-Taylor instability in equatorial spread F, Geophys. Res. Lett., 4, 558, 1977.
- Chaturvedi, P.K., and S.L. Ossakow, Nonlinear stabilization of the $E \times B$ gradient drift instability in ionospheric plasma clouds, J. Geophys. Res., 84, 419, 1979.
- Drake, J.F., P.N. Guzdar, and J.D. Huba, Saturation of the lower-hybrid-drift instability by mode coupling, Phys. Fluids, 26, 601, 1983.
- Drake, J.F., P.N. Guzdar, A.B. Hassam, and J.D. Huba, Nonlinear mode coupling theory of the lower-hybrid-drift instability, submitted to Phys. Fluids, 1983.
- Fedder, J.A., "Structuring of collisionless, high velocity ion clouds," NRL Memo 4307, 1980.
- Hudson, M.K. and C.F. Kennel, Linear theory of equatorial spread F, J. Geophys. Res., 80, 4581, 1975.
- Keskinen, M.J., S.L. Ossakow, and P.K. Chaturvedi, Preliminary report of numerical simulations of intermediate wavelength collisional Rayleigh-Taylor instability in equatorial spread F, J. Geophys. Res., 85, 1775, 1980.
- Keskinen, M.J., S.L. Ossakow, and P.K. Chaturvedi, Preliminary report of numerical simulations of intermediate wavelength $E \times B$ gradient drift instability in ionospheric plasma clouds, J. Geophys. Res., 85, 3485, 1980.
- Lampe, M., W.M. Manheimer, and K. Papadopoulos, "Anomalous transport coefficients for HANE applications due to plasma Micro-Instabilities," NRL Memo 3076, 1975.

- Pilipp, W.G., Expansion of an ion cloud in the earth's magnetic field, Planet. Space Sci., 19, 1095, 1971.
- Richtmeyer, R.D., Taylor instability in shock acceleration of compressible fluids, Comm. Pure and Appl. Math., 13, 297, 1960.
- Roberts, K.V. and J.B. Taylor, Magnetohydrodynamic equations for finite Larmor radius, Phys. Rev. Lett., 8, 197, 1962.
- Rognlein, T.D. and J. Weinstock, Theory of the nonlinear spectrum of the gradient drift instability in the equatorial electrojet, J. Geophys. Res., 79, 4733, 1974.
- Stix, T.H., Finite-amplitude collisional drift waves, Phys. Fluids, 12, 627, 1969.

DISTRIBUTION LIST

DEPARTMENT OF DEFENSE

ASSISTANT SECRETARY OF DEFENSE
COMM, CMD, CONT 7 INTELL
WASHINGTON, D.C. 20301

DIRECTOR
COMMAND CONTROL TECHNICAL CENTER
PENTAGON RM BE 685
WASHINGTON, D.C. 20301
O1CY ATTN C-650
O1CY ATTN C-312 R. MASON

DIRECTOR
DEFENSE ADVANCED RSCH PROJ AGENCY
ARCHITECT BUILDING
1400 WILSON BLVD.
ARLINGTON, VA. 22209
O1CY ATTN NUCLEAR MONITORING RESEARCH
O1CY ATTN STRATEGIC TECH OFFICE

DEFENSE COMMUNICATION ENGINEER CENTER
1860 WIEHLE AVENUE
RESTON, VA. 22090
O1CY ATTN CODE R410
O1CY ATTN CODE R812

DEFENSE TECHNICAL INFORMATION CENTER
CAMERON STATION
ALEXANDRIA, VA. 22314
O2CY

DIRECTOR
DEFENSE NUCLEAR AGENCY
WASHINGTON, D.C. 20305
O1CY ATTN STVL
O4CY ATTN TITL
O1CY ATTN DDST
O3CY ATTN RAAE

COMMANDER
FIELD COMMAND
DEFENSE NUCLEAR AGENCY
KIRTLAND, AFB, NM 87115
O1CY ATTN FCPR

DEFENSE NUCLEAR AGENCY
SAO/DNA
BUILDING 20676
KIRTLAND AFB, NM 87115
O1CY D.C. THORNBURG

DIRECTOR
INTERSERVICE NUCLEAR WEAPONS SCHOOL
KIRTLAND AFB, NM 87115
O1CY ATTN DOCUMENT CONTROL

JOINT CHIEFS OF STAFF
WASHINGTON, D.C. 20301
O1CY ATTN J-3 WWMCCS EVALUATION OFFICE

DIRECTOR
JOINT STRAT TGT PLANNING STAFF
OFFUTT AFB
OMAHA, NB 68113
O1CY ATTN JLTW-2
O1CY ATTN JPST G. GOETZ

CHIEF
LIVERMORE DIVISION FLD COMMAND DNA
DEPARTMENT OF DEFENSE
LAWRENCE LIVERMORE LABORATORY
P.O. BOX 808
LIVERMORE, CA 94550
O1CY ATTN FCPRL

COMMANDANT
NATO SCHOOL (SHAPE)
APO NEW YORK 09172
O1CY ATTN U.S. DOCUMENTS OFFICER

UNDER SECY OF DEF FOR RSCH & ENGRG
DEPARTMENT OF DEFENSE
WASHINGTON, D.C. 20301
O1CY ATTN STRATEGIC & SPACE SYSTEMS (OS)

WWMCCS SYSTEM ENGINEERING ORG
WASHINGTON, D.C. 20305
O1CY ATTN R. CRAWFORD

COMMANDER/DIRECTOR
ATMOSPHERIC SCIENCES LABORATORY
U.S. ARMY ELECTRONICS COMMAND
WHITE SANDS MISSILE RANGE, NM 88002
O1CY ATTN DELAS-EO F. NILES

DIRECTOR
BMD ADVANCED TECH CTR
HUNTSVILLE OFFICE
P.O. BOX 1500
HUNTSVILLE, AL 35807
O1CY ATTN ATC-T MELVIN T. CAPPS
O1CY ATTN ATC-O W. DAVIES
O1CY ATTN ATC-R DON RUSS

PROGRAM MANAGER
BMD PROGRAM OFFICE
5001 EISENHOWER AVENUE
ALEXANDRIA, VA 22333
O1CY ATTN DACS-BMT J. SHEA

CHIEF C-E- SERVICES DIVISION
U.S. ARMY COMMUNICATIONS CMD
PENTAGON RM 1B269
WASHINGTON, D.C. 20310
O1CY ATTN C- E-SERVICES DIVISION

COMMANDER
FRADCOM TECHNICAL SUPPORT ACTIVITY
DEPARTMENT OF THE ARMY
FORT MONMOUTH, N.J. 07703
O1CY ATTN DRSEL-NL-RD H. BENNET
O1CY ATTN DRSEL-PL-ENV H. BOMKE
O1CY ATTN J.E. QUIGLEY

COMMANDER
U.S. ARMY COMM-ELEC ENGRG INSTAL AGY
FT. HUACHUCA, AZ 85613
O1CY ATTN CCC-EMEO GEORGE LANE

COMMANDER
U.S. ARMY FOREIGN SCIENCE & TECH CTR
220 7TH STREET, NE
CHARLOTTESVILLE, VA 22901
O1CY ATTN DRXST-SD

COMMANDER
U.S. ARMY MATERIAL DEV & READINESS CMD
5001 EISENHOWER AVENUE
ALEXANDRIA, VA 22333
O1CY ATTN DRCLDC J.A. BENDER

COMMANDER
U.S. ARMY NUCLEAR AND CHEMICAL AGENCY
7500 BACKLICK ROAD
BLDG 2073
SPRINGFIELD, VA 22150
O1CY ATTN LIBRARY

DIRECTOR
U.S. ARMY BALLISTIC RESEARCH LABORATORY
ABERDEEN PROVING GROUND, MD 21005
O1CY ATTN TECH LIBRARY EDWARD BAICY

COMMANDER
U.S. ARMY SATCOM AGENCY
FT. MONMOUTH, NJ 07703
O1CY ATTN DOCUMENT CONTROL

COMMANDER
U.S. ARMY MISSILE INTELLIGENCE AGENCY
REDSTONE ARSENAL, AL 35809
O1CY ATTN JTM GAMBLE

DIRECTOR
U.S. ARMY TRADOC SYSTEMS ANALYSIS ACTIVITY
WHITE SANDS MISSILE RANGE, NM 88002
O1CY ATTN ATAA-SA
O1CY ATTN TCC/F. PAYAN JR.
O1CY ATTN ATTA-TAC LTC J. HESSE

COMMANDER
NAVAL ELECTRONIC SYSTEMS COMMAND
WASHINGTON, D.C. 20360
O1CY ATTN NAVALEX 034 T. HUGHES
O1CY ATTN PME 117
O1CY ATTN PME 117-T
O1CY ATTN CODE 5011

COMMANDING OFFICER
NAVAL INTELLIGENCE SUPPORT CTR
4301 SUTLAND ROAD, BLDG. 5
WASHINGTON, D.C. 20390
O1CY ATTN MR. DUBBIN STIC 12
O1CY ATTN NISC-50
O1CY ATTN CODE 5404 J. GALET

COMMANDER
NAVAL OCCEAN SYSTEMS CENTER
SAN DIEGO, CA 92152
O1CY ATTN J. FERGUSON

NAVAL RESEARCH LABORATORY
WASHINGTON, D.C. 20375
01CY ATTN CODE 4700 S. L. Ossakow
26 CYS IF UNCLASS. 1 CY IF CLASS)
01CY ATTN CODE 4701 I Vitkovitsky
01CY ATTN CODE 4780 J. Huba (100
CYS IF UNCLASS, 1 CY IF CLASS)
01CY ATTN CODE 7500
01CY ATTN CODE 7550
01CY ATTN CODE 7580
01CY ATTN CODE 7551
01CY ATTN CODE 7555
01CY ATTN CODE 4730 E. MCLEAN
01CY ATTN CODE 4108
01CY ATTN CODE 4730 B. RIPIN
20CY ATTN CODE 2628

COMMANDER
NAVAL SEA SYSTEMS COMMAND
WASHINGTON, D.C. 20362
01CY ATTN CAPT R. PITKIN

COMMANDER
NAVAL SPACE SURVEILLANCE SYSTEM
DAHLGREN, VA 22448
01CY ATTN CAPT J.H. BURTON

OFFICER-IN-CHARGE
NAVAL SURFACE WEAPONS CENTER
WHITE OAK, SILVER SPRING, MD 20910
01CY ATTN CODE F31

DIRECTOR
STRATEGIC SYSTEMS PROJECT OFFICE
DEPARTMENT OF THE NAVY
WASHINGTON, D.C. 20376
01CY ATTN NSP-2141
01CY ATTN NSSP-2722 FRED WIMBERLY

COMMANDER
NAVAL SURFACE WEAPONS CENTER
DAHLGREN LABORATORY
DAHLGREN, VA 22448
01CY ATTN CODE DF-14 R. BUTLER

OFFICER OF NAVAL RESEARCH
ARLINGTON, VA 22217
01CY ATTN CODE 465
01CY ATTN CODE 461
01CY ATTN CODE 402
01CY ATTN CODE 420
01CY ATTN CODE 421

COMMANDER
AEROSPACE DEFENSE COMMAND/DC
DEPARTMENT OF THE AIR FORCE
ENT AFB, CO 80912
01CY ATTN DC MR. LONG

COMMANDER
AEROSPACE DEFENSE COMMAND/XPD
DEPARTMENT OF THE AIR FORCE
ENT AFB, CO 80912
01CY ATTN XPDQ
01CY ATTN XP

AIR FORCE GEOPHYSICS LABORATORY
HANSCOM AFB, MA 01731
01CY ATTN OPR HAROLD GARDNER
01CY ATTN LKB KENNETH S.W. CHAMPION
01CY ATTN OPR ALVA T. STAIR
01CY ATTN PHD JURGEN BUCHAU
01CY ATTN PHD JOHN P. MULLEN

AF WEAPONS LABORATORY
KIRTLAND AFT, NM 87117
01CY ATTN SUL
01CY ATTN CA ARTHUR H. GUENTHER
01CY ATTN NTYCE 1LT. G. KRAJEI

AFTAC
PATRICK AFB, FL 32925
01CY ATTN TF/MAJ WILEY
01CY ATTN TN

AIR FORCE AVIONICS LABORATORY
WRIGHT-PATTERSON AFB, OH 45433
01CY ATTN AAD WADE HUNT
01CY ATTN AAD ALLEN JOHNSON

DEPUTY CHIEF OF STAFF
RESEARCH, DEVELOPMENT, & ACQ
DEPARTMENT OF THE AIR FORCE
WASHINGTON, D.C. 20330
01CY ATTN AFRDQ

HEADQUARTERS
ELECTRONIC SYSTEMS DIVISION
DEPARTMENT OF THE AIR FORCE
HANSCOM AFB, MA 01731
01CY ATTN J. DEAS

HEADQUARTERS
ELECTRONIC SYSTEMS DIVISION/YSEA
DEPARTMENT OF THE AIR FORCE
HANSCOM AFB, MA 01732
01CY ATTN YSEA

HEADQUARTERS
ELECTRONIC SYSTEMS DIVISION/DC
DEPARTMENT OF THE AIR FORCE
HANSCOM AFB, MA 01731
O1CY ATTN DCKC MAJ J.C. CLARK

COMMANDER
FOREIGN TECHNOLOGY DIVISION, AFSC
WRIGHT-PATTERSON AFB, OH 45433
O1CY ATTN NICD LIBRARY
O1CY ATTN ETD P. BALLARD

COMMANDER
ROME AIR DEVELOPMENT CENTER, AFSC
GRIFFISS AFB, NY 13441
O1CY ATTN DOC LIBRARY/TSLD
O1CY ATTN OCSE V. COYNE

SAMSO/SZ
POST OFFICE BOX 92960
WORLDWAY POSTAL CENTER
LOS ANGELES, CA 90009
(SPACE DEFENSE SYSTEMS)
O1CY ATTN SZJ

STRATEGIC AIR COMMAND/XPFS
OFFUTT AFB, NB 68113
O1CY ATTN ADWATE MAJ BRUCE BAUER
O1CY ATTN NRT
O1CY ATTN DOK CHIEF SCIENTIST

SAMSO/SK
P.O. BOX 92960
WORLDWAY POSTAL CENTER
LOS ANGELES, CA 90009
O1CY ATTN SKA (SPACE COMM SYSTEMS)
M. CLAVIN

SAMSO/MN
NORTON AFB, CA 92409
(MINUTEMAN)
O1CY ATTN MNML

COMMANDER
ROME AIR DEVELOPMENT CENTER, AFSC
HANSCOM AFB, MA 01731
O1CY ATTN ZEP A. LORENTZEN

DEPARTMENT OF ENERGY
LIBRARY ROOM G-042
WASHINGTON, D.C. 20545
O1CY ATTN DOC CON FOR A. LABOWITZ

DEPARTMENT OF ENERGY
ALBUQUERQUE OPERATIONS OFFICE
P.O. BOX 5400
ALBUQUERQUE, NM 87115
O1CY ATTN DOC CON FOR D. SHERWOOD

EG&G, INC.
LOS ALAMOS DIVISION
P.O. BOX 809
LOS ALAMOS, NM 85544
O1CY ATTN DOC CON FOR J. BREEDLOVE

UNIVERSITY OF CALIFORNIA
LAWRENCE LIVERMORE LABORATORY
P.O. BOX 808
LIVERMORE, CA 94550
O1CY ATTN DOC CON FOR TECH INFO DEPT
O1CY ATTN DOC CON FOR L-389 R. OTT
O1CY ATTN DOC CON FOR L-31 R. HAGER
O1CY ATTN DOC CON FOR L-46 F. SEWARD

LOS ALAMOS NATIONAL LABORATORY
P.O. BOX 1663
LOS ALAMOS, NM 87545
O1CY ATTN DOC CON FOR J. WOLCOTT
O1CY ATTN DOC CON FOR R.F. TASCHEK
O1CY ATTN DOC CON FOR E. JONES
O1CY ATTN DOC CON FOR J. MALIK
O1CY ATTN DOC CON FOR R. JEFFRIES
O1CY ATTN DOC CON FOR J. ZINN
O1CY ATTN DOC CON FOR P. KEATON
O1CY ATTN DOC CON FOR D. WESTERVELT
O1CY ATTN D. SAPPENFIELD

SANDIA LABORATORIES
P.O. BOX 5800
ALBUQUERQUE, NM 87115
O1CY ATTN DOC CON FOR W. BROWN
O1CY ATTN DOC CON FOR A. THORNBROUGH
O1CY ATTN DOC CON FOR T. WRIGHT
O1CY ATTN DOC CON FOR D. DAHLGREN
O1CY ATTN DOC CON FOR 3141
O1CY ATTN DOC CON FOR SPACE PROJECT DIV

SANDIA LABORATORIES
LIVERMORE LABORATORY
P.O. BOX 969
LIVERMORE, CA 94550
O1CY ATTN DOC CON FOR B. MURPHEY
O1CY ATTN DOC CON FOR T. COOK

OFFICE OF MILITARY APPLICATION
DEPARTMENT OF ENERGY
WASHINGTON, D.C. 20545
O1CY ATTN DOC CON DR. YO SONG

OTHER GOVERNMENT

DEPARTMENT OF COMMERCE
NATIONAL BUREAU OF STANDARDS
WASHINGTON, D.C. 20234
01CY (ALL CORRES: ATTN SEC OFFICER FOR)

INSTITUTE FOR TELECOM SCIENCES
NATIONAL TELECOMMUNICATIONS & INFO ADMIN
BOULDER, CO 80303
01CY ATTN A. JEAN (UNCLASS ONLY)
01CY ATTN W. UTLAUT
01CY ATTN D. CROMBIE
01CY ATTN L. BERRY

NATIONAL OCEANIC & ATMOSPHERIC ADMIN
ENVIRONMENTAL RESEARCH LABORATORIES
DEPARTMENT OF COMMERCE
BOULDER, CO 80302
01CY ATTN R. GRUBB
01CY ATTN AERONOMY LAB G. REID

DEPARTMENT OF DEFENSE CONTRACTORS

AEROSPACE CORPORATION
P.O. BOX 92957
LOS ANGELES, CA 90009
01CY ATTN I. GARFUNKEL
01CY ATTN T. SALMI
01CY ATTN V. JOSEPHSON
01CY ATTN S. BOWER
01CY ATTN D. OLSEN

ANALYTICAL SYSTEMS ENGINEERING CORP
5 OLD CONCORD ROAD
BURLINGTON, MA 01803
01CY ATTN RADIO SCIENCES

AUSTIN RESEARCH ASSOC., INC.
1901 RUTLAND DRIVE
AUSTIN, TX 78758
01CY ATTN L. SLOAN
01CY ATTN R. THOMPSON

BERKELEY RESEARCH ASSOCIATES, INC.
P.O. BOX 983
BERKELEY, CA 94701
01CY ATTN J. WORKMAN
01CY ATTN C. PRETTIE
01CY ATTN S. BRECHT

BOEING COMPANY, THE
P.O. BOX 3707
SEATTLE, WA 98124
01CY ATTN G. KEISTER
01CY ATTN D. MURRAY
01CY ATTN G. HALL
01CY ATTN J. KENNEY

CHARLES STARK DRAPER LABORATORY, INC.
555 TECHNOLOGY SQUARE
CAMBRIDGE, MA 02139
01CY ATTN D.B. COX
01CY ATTN J.P. GILMORE

COMSAT LABORATORIES
LINTHICUM ROAD
CLARKSBURG, MD 20734
01CY ATTN G. HYDE

CORNELL UNIVERSITY
DEPARTMENT OF ELECTRICAL ENGINEERING
ITHACA, NY 14850
01CY ATTN D.T. FARLEY, JR.

ELECTROSPACE SYSTEMS, INC.
BOX 1359
RICHARDSON, TX 75080
01CY ATTN H. LOGSTON
01CY ATTN SECURITY (PAUL PHILLIPS)

EOS TECHNOLOGIES, INC.
606 Wilshire Blvd.
Santa Monica, Calif 90401
01CY ATTN C.B. GABBARD

ESL, INC.
495 JAVA DRIVE
SUNNYVALE, CA 94086
01CY ATTN J. ROBERTS
01CY ATTN JAMES MARSHALL

GENERAL ELECTRIC COMPANY
SPACE DIVISION
VALLEY FORGE SPACE CENTER
GODDARD BLVD KING OF PRUSSIA
P.O. BOX 8555
PHILADELPHIA, PA 19101
01CY ATTN M.H. BORTNER SPACE SCI LAB

GENERAL ELECTRIC COMPANY
P.O. BOX 1122
SYRACUSE, NY 13201
01CY ATTN F. REIBERT

GENERAL ELECTRIC TECH SERVICES CO., INC.
HMES
COURT STREET
SYRACUSE, NY 13201
01CY ATTN G. MILLMAN

GEOPHYSICAL INSTITUTE
UNIVERSITY OF ALASKA
FAIRBANKS, AK 99701
(ALL CLASS ATTN: SECURITY OFFICER)
01CY ATTN T.N. DAVIS (UNCLASS ONLY)
01CY ATTN TECHNICAL LIBRARY
01CY ATTN NEAL BROWN (UNCLASS ONLY)

GTE SYLVANIA, INC.
ELECTRONICS SYSTEMS GRP-EASTERN DIV
77 A STREET
NEEDHAM, MA 02194
01CY ATTN DICK STEINHOF

HSS, INC.
2 ALFRED CIRCLE
BEDFORD, MA 01730
01CY ATTN DONALD HANSEN

ILLINOIS, UNIVERSITY OF
107 COBLE HALL
150 DAVENPORT HOUSE
CHAMPAIGN, IL 61820
(ALL CORRES ATTN DAN MCCLELLAND)
01CY ATTN K. YER

INSTITUTE FOR DEFENSE ANALYSES
1801 NO. BEAUREGARD STREET
ALEXANDRIA, VA 22311
01CY ATTN J.M. AEN
01CY ATTN ERNEST BAUER
01CY ATTN HANS WOLFARD
01CY ATTN JOEL BENGSTON

INTL TEL & TELEGRAPH CORPORATION
500 WASHINGTON AVENUE
NUTLEY, NJ 07110
01CY ATTN TECHNICAL LIBRARY

JAYCOR
11011 TORREYANA ROAD
P.O. BOX 85154
SAN DIEGO, CA 92138
01CY ATTN J.L. SPERLING

JOHNS HOPKINS UNIVERSITY
APPLIED PHYSICS LABORATORY
JOHNS HOPKINS ROAD
LAUREL, MD 20810
01CY ATTN DOCUMENT LIBRARIAN
01CY ATTN THOMAS POTEMRA
01CY ATTN JOHN DASSOULAS

KAMAN SCIENCES CORP
P.O. BOX 7463
COLORADO SPRINGS, CO 80933
01CY ATTN T. MEAGHER

KAMAN TEMPO-CENTER FOR ADVANCED STUDIES
816 STATE STREET (P.O DRAWER QQ)
SANTA BARBARA, CA 93102
01CY ATTN DASIAC
01CY ATTN WARREN S. KNAPP
01CY ATTN WILLIAM MCNAMARA
01CY ATTN B. GAMBILL

LINKABIT CORP
10453 ROSELLE
SAN DIEGO, CA 92121
01CY ATTN IRWIN JACOBS

LOCKHEED MISSILES & SPACE CO., INC
P.O. BOX 504
SUNNYVALE, CA 94088
01CY ATTN DEPT 60-12
01CY ATTN D.R. CHURCHILL

LOCKHEED MISSILES & SPACE CO., INC.
3251 HANOVER STREET
PALO ALTO, CA 94304
01CY ATTN MARTIN WALT DEPT 52-12
01CY ATTN W.L. IMHOF DEPT 52-12
01CY ATTN RICHARD G. JOHNSON DEPT 52-12
01CY ATTN J.B. CLADIS DEPT 52-12

MARTIN MARIETTA CORP
ORLANDO DIVISION
P.O. BOX 5837
ORLANDO, FL 32805
01CY ATTN R. HEFFNER

M.I.T. LINCOLN LABORATORY
P.O. BOX 73
LEXINGTON, MA 02173
01CY ATTN DAVID M. TOWLE
01CY ATTN L. LOUGHLIN
01CY ATTN D. CLARK

MCDONNELL DOUGLAS CORPORATION
5301 BOLSA AVENUE
HUNTINGTON BEACH, CA 92647
O1CY ATTN N. HARRIS
O1CY ATTN J. MOULE
O1CY ATTN GEORGE MROZ
O1CY ATTN W. OLSON
O1CY ATTN R.W. HALPRIN
O1CY ATTN TECHNICAL LIBRARY SERVICES

MISSION RESEARCH CORPORATION
735 STATE STREET
SANTA BARBARA, CA 93101
O1CY ATTN P. FISCHER
O1CY ATTN W.F. CREVIER
O1CY ATTN STEVEN L. GUTSCHE
O1CY ATTN R. BOGUSCH
O1CY ATTN R. HENDRICK
O1CY ATTN RALPH KILB
O1CY ATTN DAVE SOWLE
O1CY ATTN F. FAJEN
O1CY ATTN M. SCHEIBE
O1CY ATTN CONRAD L. LONGMIRE
O1CY ATTN B. WHITE

MISSION RESEARCH CORP.
1720 RANDOLPH ROAD, S.E.
ALBUQUERQUE, NEW MEXICO 87106
O1CY R. STELLINGWERF
O1CY M. ALME
O1CY L. WRIGHT

MITRE CORPORATION, THE
P.O. BOX 208
BEDFORD, MA 01730
O1CY ATTN JOHN MORGANSTERN
O1CY ATTN G. HARDING
O1CY ATTN C.E. CALLAHAN

MITRE CORP
WESTGATE RESEARCH PARK
1820 DOLLY MADISON BLVD
MCLEAN, VA 22101
O1CY ATTN W. HALL
O1CY ATTN W. FOSTER

PACIFIC-SIERRA RESEARCH CORP
12340 SANTA MONICA BLVD.
LOS ANGELES, CA 90025
O1CY ATTN E.C. FIELD, JR.

PENNSYLVANIA STATE UNIVERSITY
IONOSPHERE RESEARCH LAB
318 ELECTRICAL ENGINEERING EAST
UNIVERSITY PARK, PA 16802
(NO CLASS TO THIS ADDRESS)
O1CY ATTN IONOSPHERIC RESEARCH LAB

PHOTOMETRICS, INC.
4 ARROW DRIVE
WOBURN, MA 01801
O1CY ATTN IRVING L. KOFSKY

PHYSICAL DYNAMICS, INC.
P.O. BOX 3027
BELLEVUE, WA 98009
O1CY ATTN E.J. FREMOUW

PHYSICAL DYNAMICS, INC.
P.O. BOX 10367
OAKLAND, CA 94610
ATTN A. THOMSON

R & D ASSOCIATES
P.O. BOX 9695
MARINA DEL REY, CA 90291
O1CY ATTN FORREST GILMORE
O1CY ATTN WILLIAM B. WRIGHT, JR.
O1CY ATTN ROBERT F. LELEVIER
O1CY ATTN WILLIAM J. KARZAS
O1CY ATTN H. ORY
O1CY ATTN C. MACDONALD
O1CY ATTN R. TURCO
O1CY ATTN L. DeRAND
O1CY ATTN W. TSAI

RAND CORPORATION, THE
1700 MAIN STREET
SANTA MONICA, CA 90406
O1CY ATTN CULLEN CRAIN
O1CY ATTN ED BEDROZIAN

RAYTHEON CO.
528 BOSTON POST ROAD
SUDBURY, MA 01776
O1CY ATTN BARBARA ADAMS

RIVERSIDE RESEARCH INSTITUTE
330 WEST 42nd STREET
NEW YORK, NY 10036
O1CY ATTN VINCE TRAPANI

SCIENCE APPLICATIONS, INC.
1150 PROSPECT PLAZA
LA JOLLA, CA 92037
01CY ATTN LEWIS M. LINSON
01CY ATTN DANIEL A. HAMLIN
01CY ATTN E. FRIEMAN
01CY ATTN E.A. STRAKER
01CY ATTN CURTIS A. SMITH
01CY ATTN JACK MCDUGALL

SCIENCE APPLICATIONS, INC
1710 GOODRIDGE DR.
MCLEAN, VA 22102
ATTN: J. COCKAYNE

SRI INTERNATIONAL
333 RAVENSWOOD AVENUE
MENLO PARK, CA 94025
01CY ATTN DONALD NEILSON
01CY ATTN ALAN BURNS
01CY ATTN G. SMITH
01CY ATTN R. TSUNODA
01CY ATTN DAVID A. JOHNSON
01CY ATTN WALTER G. CHESNUT
01CY ATTN CHARLES L. RINO
01CY ATTN WALTER JAYE
01CY ATTN J. VICKREY
01CY ATTN RAY L. LEADABRAND
01CY ATTN G. CARPENTER
01CY ATTN G. PRICE
01CY ATTN R. LIVINGSTON
01CY ATTN V. GONZALES
01CY ATTN D. MCDANIEL

TECHNOLOGY INTERNATIONAL CORP
75 WIGGINS AVENUE
BEDFORD, MA 01730
01CY ATTN W.P. BOQUIST

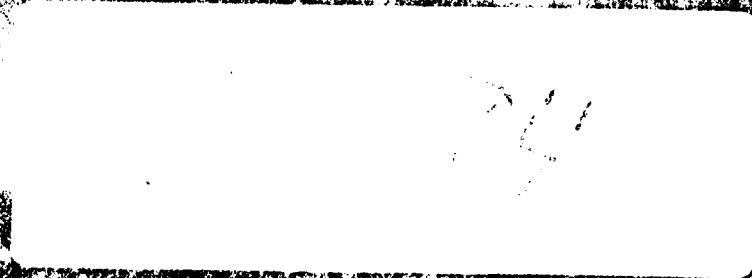
TOYON RESEARCH CO.
P.O. Box 6890
SANTA BARBARA, CA 93111
01CY ATTN JOHN ISE, JR.
01CY ATTN JOEL GARBARINO

TRW DEFENSE & SPACE SYS GROUP
ONE SPACE PARK
REDONDO BEACH, CA 90278
01CY ATTN R. K. PLEBUCH
01CY ATTN S. ALTSCHULER
01CY ATTN D. DEE
01CY ATTN D/ STOCKWELL
SNYF/1575

VISIDYNE
SOUTH BEDFORD STREET
BURLINGTON, MASS 01803
01CY ATTN W. REIDY
01CY ATTN J. CARPENTER
01CY ATTN C. HUMPHREY

END

FILMED



DINIC