

AD-A139 458

LINEAR INDUCTION ACCELERATOR(U) FOREIGN TECHNOLOGY DIV  
WRIGHT-PATTERSON AFB OH V S BOSAMYKIN ET AL. 05 MAR 84  
FTD-ID(R5)T-1821-83

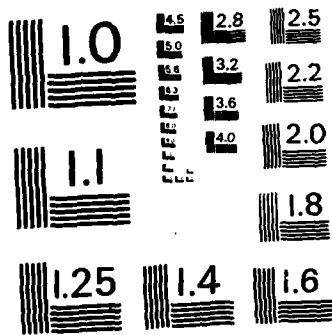
1/1

UNCLASSIFIED

F/G 28/7

NL





MICROCOPY RESOLUTION TEST CHART  
NATIONAL BUREAU OF STANDARDS-1963-A

9

FTD-ID(RS)T-1821-83

AD A139458

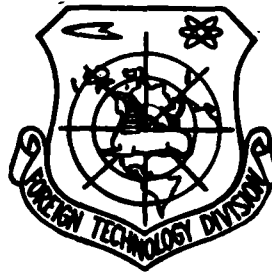
# FOREIGN TECHNOLOGY DIVISION



LINEAR INDUCTION ACCELERATOR

by

V. S. Bosamykin and A. I. Pavlovskiy



**DTIC**  
**ELECTE**  
MAR 28 1984  
**S** **D**  
**A**

Approved for public release;  
distribution unlimited.

**DTIC FILE COPY**

84 03 27 025

# EDITED TRANSLATION

FTD-ID(RS)T-1821-83

5 March 1984

MICROFICHE NR: FTD-84-C-000252

LINEAR INDUCTION ACCELERATOR

By: V. S. Bosamykin and A. I. Pavlovskiy

English pages: 3

Source: USSR Patent Nr. 270913, 4 November 1971, pp. 1-2

Country of origin: USSR

Translated by: Charles T. Ostertag, Jr.

Requester: FTD/TQTD

Approved for public release; distribution unlimited.

Accession For	<input type="checkbox"/>
NTIS GRA&I	<input checked="" type="checkbox"/>
DTIC TAB	<input type="checkbox"/>
Unannounced	<input type="checkbox"/>
Justification	
By	
Distribution/	
Availability Codes	
Dist Avail and/or	
Special	

A-1



<p>THIS TRANSLATION IS A RENDITION OF THE ORIGINAL FOREIGN TEXT WITHOUT ANY ANALYTICAL OR EDITORIAL COMMENT. STATEMENTS OR THEORIES ADVOCATED OR IMPLIED ARE THOSE OF THE SOURCE AND DO NOT NECESSARILY REFLECT THE POSITION OR OPINION OF THE FOREIGN TECHNOLOGY DIVISION.</p>	<p>PREPARED BY: TRANSLATION DIVISION FOREIGN TECHNOLOGY DIVISION WP-AFB, OHIO.</p>
---	--

U. S. BOARD ON GEOGRAPHIC NAMES TRANSLITERATION SYSTEM

Block	Italic	Transliteration	Block	Italic	Transliteration
А а	<i>А а</i>	A, a	Р р	<i>Р р</i>	R, r
Б б	<i>Б б</i>	B, b	С с	<i>С с</i>	S, s
В в	<i>В в</i>	V, v	Т т	<i>Т т</i>	T, t
Г г	<i>Г г</i>	G, g	У у	<i>У у</i>	U, u
Д д	<i>Д д</i>	D, d	Ф ф	<i>Ф ф</i>	F, f
Е е	<i>Е е</i>	Ye, ye; E, e*	Х х	<i>Х х</i>	Kh, kh
Ж ж	<i>Ж ж</i>	Zh, zh	Ц ц	<i>Ц ц</i>	Ts, ts
Э э	<i>Э э</i>	Z, z	Ч ч	<i>Ч ч</i>	Ch, ch
И и	<i>И и</i>	I, i	Ш ш	<i>Ш ш</i>	Sh, sh
Й й	<i>Й й</i>	Y, y	Щ щ	<i>Щ щ</i>	Shch, shch
К к	<i>К к</i>	K, k	Ъ ъ	<i>Ъ ъ</i>	"
Л л	<i>Л л</i>	L, l	Ы ы	<i>Ы ы</i>	Y, y
М м	<i>М м</i>	M, m	Ь ь	<i>Ь ь</i>	'
Н н	<i>Н н</i>	N, n	Э э	<i>Э э</i>	E, e
О о	<i>О о</i>	O, o	Ю ю	<i>Ю ю</i>	Yu, yu
П п	<i>П п</i>	P, p	Я я	<i>Я я</i>	Ya, ya

\*ye initially, after vowels, and after ъ, ь; e elsewhere.  
When written as ë in Russian, transliterate as yë or ë.

RUSSIAN AND ENGLISH TRIGONOMETRIC FUNCTIONS

Russian	English	Russian	English	Russian	English
sin	sin	sh	sinh	arc sh	sinh <sup>-1</sup>
cos	cos	ch	cosh	arc ch	cosh <sup>-1</sup>
tg	tan	th	tanh	arc th	tanh <sup>-1</sup>
ctg	cot	cth	coth	arc cth	coth <sup>-1</sup>
sec	sec	sch	sech	arc sch	sech <sup>-1</sup>
cosec	csc	csch	csch	arc csch	csch <sup>-1</sup>

Russian English

rot curl  
lg log

GRAPHICS DISCLAIMER

All figures, graphics, tables, equations, etc. merged into this translation were extracted from the best quality copy available.

## LINEAR INDUCTION ACCELERATOR

*A. I.*  
V. S. Bosamykin and Pavlovskiy (authors of invention)

The invention pertains to accelerator technology.

In the known linear induction accelerators the accelerating voltage in the secondary loop of each inductor is created with an oscillating discharge of concentrated capacitance on the primary concentrated inductance. In this case the accelerating voltage has a cosinusoidal form, which limits the pulsed power of the accelerator.

For increasing the power in the proposed linear induction accelerator each inductor is made in the form of a toroidal line with distributed parameters, from one end of which in the gap of the line a ring commutator is included, and from the other end of the line a resistor is hooked up.

The drawing shows the layouts of the inductors, providing rectangular pulses of accelerating voltage. Other variants can differ by the mutual positioning of the elements of the circuit under consideration.

The long line, stacked (a) or turned (b) in the form of a torus, with high-voltage plate 1, having a ring commutator 2 in the gap AB, together with the grounded shield ACDE forms a separate inductor of the accelerator. The functioning of the inductor is analogous to the functioning of coaxial cable, which simultaneously is shorted from one end, and from the other is included in the case of a purely active load on resistor 3 of magnitude R. In the case of closing of the gap AB with the help of commutator 2 the line begins to be discharged

through gap BE and commutator 2 onto resistor 3 of the accelerating interval FG, to which the voltage 
$$U = U_0 \frac{R}{R + \rho},$$

is applied, where  $U_0$  - charging voltage of the line, and  $\rho$  - its wave resistance. (The line of toroidal construction is not uniform, therefore by  $\rho$  here is understood the maximum value of wave resistance).

The amplitude and shape of the pulses of accelerating voltage depend on the correlation between the variables  $R$  and  $\rho$ . The maximum strength of the electric field in the accelerating gap is reached when  $R \gg \rho$ .

After a time  $\tau = \frac{l}{V}$ , where  $l$  - length of the line and  $V$  - rate of propagation of a wave, the voltage in the accelerating interval changes sign as a result of the arrival of a wave of current, caused by the shorting of the gap AB. From this moment the voltage changes sign across the interval of time  $2\tau$ . The process bears a damping nature as a result of the active losses in the commutator, line and load.

For reducing the active losses in the line the conducting plates, forming the inductor, should have a thickness, greater than the depth of the skin-layer of currents flowing over them.

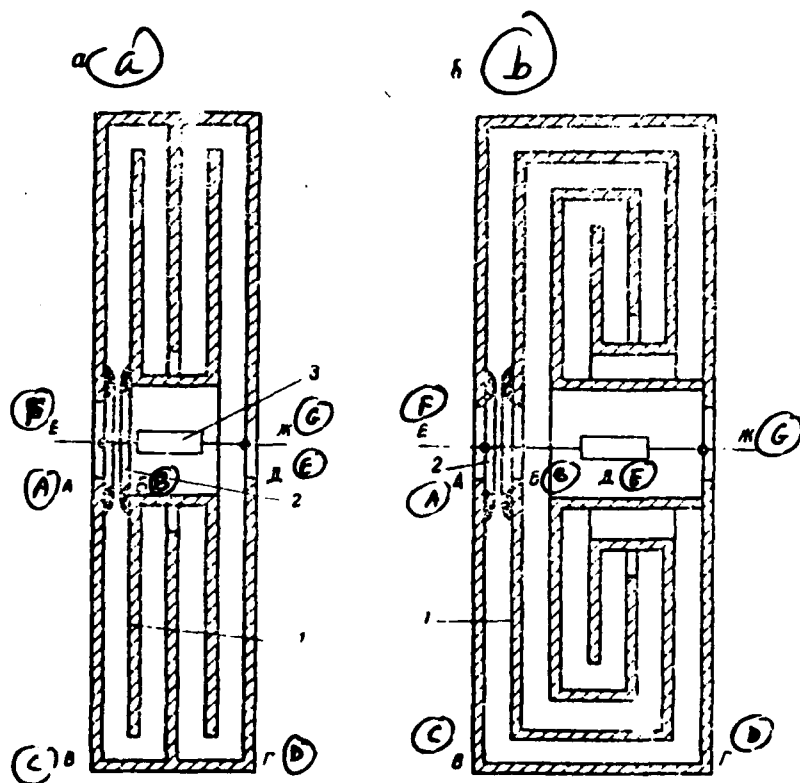
The front of the first pulse of voltage in the accelerating interval FG when  $R \gg \rho$  is determined mainly by the time of development of the discharge in the commutator and its parasitic inductance. The magnetic flux, developing in the inductor, is toroidal and closed. If the inductor is assembled on several uniform lines, connected in parallel, then the width of the radial gaps between them is limited by the permissible magnitude of nontoroidal stray flows, which reduce the magnitude of accelerating voltage.

The use of such a line makes it possible to obtain rectangular pulses of accelerating voltage, which ensures the monochromaticity of energy of the accelerated particles.

It is particularly convenient to use such accelerating systems in linear induction accelerators for obtaining single or series of pulses of current of the beam of charged particles with an amplitude  $> 10^4 \text{ A}$ , operating with a low ( $\approx 0.1 \text{ Hz}$ ) repetition rate.

### Object of Invention

A linear induction accelerator of charged particles, containing inductors and an acceleration circuit, characterized by the fact that for the purpose of increasing the power of the accelerator each inductor is made in the form of a toroidal line with distributed parameters, from one end of which in the gap of the line a ring commutator is included, and from the other end of the line a resistor is hooked up.





END

FILMED

4-84

DTIC