

AD-A137 911

MELTING LAYER SURVEY(U) AIR FORCE GEOPHYSICS LAB
HANSCOM AFB MA I D COHEN ET AL. 12 AUG 83
AFGL-TR-83-0200

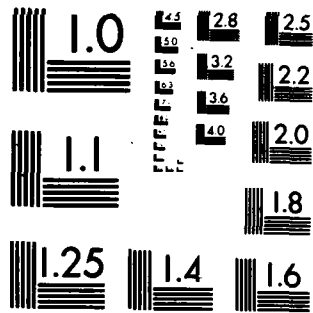
1/1

UNCLASSIFIED

F/G 4/2

NL

END
DATE
FILMED
3 84
DTIC



MICROCOPY RESOLUTION TEST CHART
NATIONAL BUREAU OF STANDARDS-1963-A

AD A137911

AFGL-TR-83-0200
ENVIRONMENTAL RESEARCH PAPERS, NO. 848



(D)

Melting Layer Survey - Final Report

IAN D. COHEN, Capt, USAF
HUGH J. SWEENEY

12 August 1983

Approved for public release; distribution unlimited.

DTIC
ELECTE
FEB 15 1984
A

METEOROLOGY DIVISION PROJECT 6670
AIR FORCE GEOPHYSICS LABORATORY
HANSCOM AFB, MASSACHUSETTS 01731

AIR FORCE SYSTEMS COMMAND, USAF



DTIC FILE COPY

84 02 15 028

This report has been reviewed by the ESD Public Affairs Office (PA) and is releasable to the National Technical Information Service (NTIS).

"This technical report has been reviewed and is approved for publication"

Ian D. Cohen

IAN D. COHEN, Capt. USAF
Author

Arnold A. Barnes, Jr.

ARNOLD A. BARNES, JR.
Chief, Cloud Physics Branch

FOR THE COMMANDER

Robert A. McClatchey
ROBERT A. McCLATCHEY
Director, Meteorology Division

Qualified requestors may obtain additional copies from the Defense Technical Information Center. All others should apply to the National Technical Information Service.

If your address has changed, or if you wish to be removed from the mailing list, or if the addressee is no longer employed by your organization, please notify AFGL/DAA/LYC Hanscom AFB, MA 01731. This will assist us in maintaining a current mailing list.

Do not return copies of this report unless contractual obligations or notices on a specific document requires that it be returned.

Unclassified

SECURITY CLASSIFICATION OF THIS PAGE (When Data Entered)

REPORT DOCUMENTATION PAGE		READ INSTRUCTIONS BEFORE COMPLETING FORM	
1. REPORT NUMBER AFGL-TR-83-0200	2. GOVT ACCESSION NO. <i>AD-A137911</i>	3. RECIPIENT'S CATALOG NUMBER	
4. TITLE (and Subtitle) MELTING LAYER SURVEY - FINAL REPORT		5. TYPE OF REPORT & PERIOD COVERED Scientific. Final.	
7. AUTHOR(s) Ian D. Cohen, Capt. USAF Hugh J. Sweeney		6. PERFORMING ORG. REPORT NUMBER ERP, No. 848	
9. PERFORMING ORGANIZATION NAME AND ADDRESS Air Force Geophysics Laboratory (LYC) Hanscom AFB Massachusetts 01731		8. CONTRACT OR GRANT NUMBER(s)	
11. CONTROLLING OFFICE NAME AND ADDRESS Air Force Geophysics Laboratory (LYC) Hanscom AFB Massachusetts 01731		10. PROGRAM ELEMENT, PROJECT, TASK AREA & WORK UNIT NUMBERS 62101F 66701204	
14. MONITORING AGENCY NAME & ADDRESS (if different from Controlling Office)		12. REPORT DATE 12 August 1983	
		13. NUMBER OF PAGES 33	
		15. SECURITY CLASS. (of this report) Unclassified	
		15a. DECLASSIFICATION DOWNGRADING SCHEDULE	
16. DISTRIBUTION STATEMENT (of this Report) Approved for public release; distribution unlimited.			
17. DISTRIBUTION STATEMENT (of the abstract entered in Block 20, if different from Report)			
18. SUPPLEMENTARY NOTES			
19. KEY WORDS (Continue on reverse side if necessary and identify by block number) Melting layer Bright band Snowflakes Ice crystals Radar reflectivity Cloud physics			
20. ABSTRACT (Continue on reverse side if necessary and identify by block number) Research involving the region of clouds in which snowflakes and ice crystals melt is reviewed. Studies of how ice crystals and snowflakes melt are examined and show that in general, melting is slower and less structured than was previously realized. An investigation of the radar bright band is included. The increase of returned signal from the melting particles in the bright band comes from the increase of the index of refraction when the particles turn from snow to water. This is not a radar/particle-surface phenomenon, but it is a radar/particle-density interaction. Thus the bright band does not begin at the			

DD FORM 1473
1 JAN 73

Unclassified
SECURITY CLASSIFICATION OF THIS PAGE (When Data Entered)

Unclassified

SECURITY CLASSIFICATION OF THIS PAGE(When Data Entered)

20. (Contd)

top of the melting layer as the particles first begin to melt but appears at a lower level when a sufficient mass has melted. The literature survey presented in AFGL-TR-82-0007 is revised and expanded.

Unclassified

SECURITY CLASSIFICATION OF THIS PAGE(When Data Entered)



Application For	
RESEARCH	
PROJECT	
NO. 4716	
DATE	
BY	
APPROVED	

At

Preface

This report summarizes work done under in-house work unit 2310G502. Special thanks are due to Lt. Col (Ret.) Robert Schaller, who, while at AFGL, organized this work unit and planned the program.

Outside of AFGL, several other individuals and groups worked with us on this project. Most notable among these were Professor Richard Passarelli and Dr. K. Kenneth Lo of the Massachusetts Institute of Technology, Professor Steven B. Newman of Central Connecticut State College, and Dr. Norihiko Fukuta of the University of Utah.

The authors would like to thank Dr. Arnold Barnes, Jr. for his suggestions and assistance in preparing this report, and Mrs. Carolyn Fadden for typing the manuscript.

Contents

1. INTRODUCTION	7
2. LITERATURE SURVEY	8
3. ICE CRYSTAL AND SNOWFLAKE MELTING	9
4. RADAR OBSERVATIONS OF THE MELTING LAYER	11
4.1 Calculations	13
4.2 Generation of the Bright Band	16
4.3 Processes in Zone 1	17
4.4 Processes in Zone 2	20
5. CONCLUSION	20
5.1 Ice Crystal and Snowflake Melting	20
5.2 Radar Observations	21
REFERENCES	23
APPENDIX A: Reference List	25

Illustrations

1. University of Utah Melting Chamber	9
2. Idealized Model of the Melting Layer	12
3. Power Received vs Mass Melted	13
4. Mass Melted vs Fall Velocity	17
5. Changes in Back Scattering From Cloud During Melting	19

Melting Layer Survey—Final Report

1. INTRODUCTION

The AFGL Melting Layer study was begun in 1979. Original plans called for a flight program and extensive radar studies. Budget problems and a change in the AFGL meteorology program led to curtailment of these portions of the program. This report will therefore concentrate on those portions of the program that were completed. They include:

- (1) A survey of past and present research on the melting layer,
- (2) Theoretical and observational studies of the melting of ice crystals and snowflakes,
- (3) The radar "bright band" and its relation to the melting layer.

Schaller et al¹ summarized the work done during the early phases of this study. Since that time, some additional work has been done as part of the AFGL program, and much has been done outside of AFGL. Section 4 of this report will review this work.

No further effort to define boundaries of the melting layer have been made. Rather, the AFGL study has focused on the melting layer as a transition region with no fixed limits.

(Received for publication 5 August 1983)

1. Schaller, R. C., Cohen, I. D., Barnes, A. A., and Gibbons, L. C. (1982) A Survey of Melting Layer Research, AFGL-TR-82-0007, AD A11524.

Interest in the melting layer has remained high. Stewart,² showed how important the processes in this region can be to precipitation. Cohen³ found a considerable amount of aircraft icing near the 0° C isotherm, including a few cases of icing at temperatures between 0° C and +2° C. Reports by Newman⁴ and Lo and Passarelli⁵ have added to their work. Further efforts by Mr. Hugh Sweeney and Dr. Norihiko Fukuta will be discussed later in this report.

The structure of ice and the melting process have been the subject of several studies. Fukuta⁶ and Rasmussen et al⁷ have reported on studies of the melting of ice crystals. The former developed a theoretical model of snowflake melting, while the latter the latter conducted wind tunnel tests which showed that a ring of water will form at the equator of a spherical ice particle.

Radar continues to be used as a tool to examine the melting layer. Bohren and Battan⁸ have noted the effect partially melting crystals, and crystals with a "spongy" outer layer, have on radar reflectivity. Bringi et al⁹ explain how dual polarization can be used to identify precipitation particles. The use of Doppler radar is certain to add to our knowledge of the melting layer. Metcalf¹⁰ discusses polarization diversity radar; another technique which will help us understand this region.

Thus, although the AFGL study of the melting layer has been completed, research into this area of the atmosphere is continuing, and will lead to new discoveries which will be of great interest to meteorologists.

2. LITERATURE SURVEY

Schaller et al¹ provided a list of reports on previous melting layer research. An expanded list is included in Appendix A of this report. The list includes 49 additional entries on the subjects of scattering, theory and applications of radar, and laboratory studies of ice, water, and melting. Some, such as Battan¹¹ have been included to provide additional background material. Others, such as Kinzer and Cobb¹² and Kinzer,¹³ are on laboratory studies which apply to processes which occur in the melting layer.

Most of the additions to the list represent works published since the previous version of the list was compiled. In addition to Fukuta et al,⁶ work by Donovan¹⁴ and Savage¹⁵ was sponsored by AFGL. Most of the work in recent years has involved wind tunnel studies such as Rasmussen and Pruppacher¹⁶ or radar observations using new techniques, such as the dual-polarization studies by Krehbiel and Broch¹⁷ and Kropfli et al.¹⁸ The full updated bibliography is presented in Appendix A.

(Due to the large number of references cited above, they will not be listed here. See References, page 23.)

3. ICE CRYSTAL AND SNOWFLAKE MELTING

Fukuta⁶ used the melting chamber shown in Figure 1 to study the melting of snowflakes and ice crystals. The chamber was mounted on a truck and could be moved to various locations to enable him to observe snowflakes in different locations.

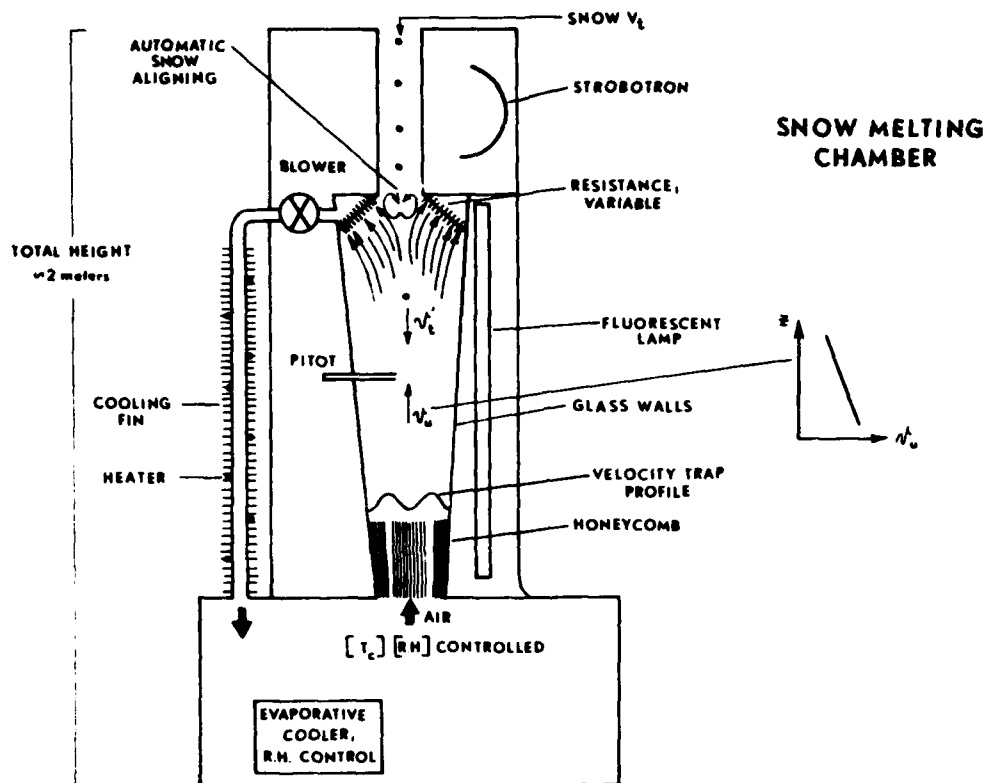


Figure 1. University of Utah Melting Chamber. This chamber was used to study the melting of 2700 ice crystals and snowflakes

As a general rule, snowflakes begin to melt from the outside. As they do, the radius of the flake changes. In addition, a coating of water forms on the outside of each ice crystal. The exact shape may vary with the type of crystal. While Fukuta et al⁶ note that the water may form into an oblate spheroid, Rasmussen et al⁷ report that meltwater from larger spherical crystals forms a torus at the equator of the crystal. Regardless of the shape, a layer of water on the outside of a snowflake can affect the type of radar return it will exhibit. The water will also cause other particles to adhere to the snowflake, thus causing aggregates.

One surprising thing about the melting of snowflakes was that the ice skeleton which remains below the liquid coating would often disintegrate in an irregular pattern. While smaller crystals (up to 1 millimeter in diameter) could easily be suspended in the wind tunnel, larger ones often moved in unexpected directions and generally were lost before they had completed the melting process.

Donovan¹⁴ summarized the major findings of the observation program as follows:

- (1) The observed melting time of snowflakes increased with size, but rather gently. The increase was far slower than that predicted by current theory.
- (2) Snow crystal disruption, in which a crystal melts not into a spherical water droplet, but into several pieces, was confirmed. This phenomenon was observed to be a dominant factor in the melting of snowflakes/crystals, rather than an occasional occurrence, as had been previously thought.
- (3) The vertical stability of a suspended snowflake appeared to be dependent upon its size and shape. Small crystals, less than 1 mm in diameter, were the most stable.
- (4) Helicoptering, or the rotation of a crystal around its vertical axis, was observed in crystals 1-3 mm in diameter.
- (5) Crystals 1-3 mm in diameter went into a "death spiral" crashing into the wall of the chamber during the last portion of their melting process.
- (6) Crystals less than 1 mm in diameter jumped violently at the end of their melting process. This jump was usually upwards or to the side, but seldom downwards.
- (7) Large, flat, symmetrical dendritic crystals (less than 0.3 mm thick) fell flat and were very stable in the chamber airstream. They melted, as the current theory predicted, from the outside inwards. There was no disruption observed with these crystals.
- (8) The snowflake's shape changed gradually while the melting proceeded. The shape change appeared faster in the subsaturated environment. A final shape was never observed, however, since crystals frequently broke into smaller pieces while they were melting.

Savage¹⁵ noted that individual crystals melt at a rate which varies with the crystal size. He also noted that the crystals disintegrate as they melt and melt more rapidly as they disintegrate.

Matsuo and Sasyo¹⁹ studied the melting of ice and snow pellets. They observed that the melting of snow in the atmosphere depends on air temperature, relative humidity, pellet size, and density. They note that snow will melt faster in saturated air since latent heat of condensation will be released as water condenses on the particle. In sub-saturated air, however, the pellet will try to sublimate, and thus try to absorb heat, therefore, cooling the pellet.

4. RADAR OBSERVATIONS OF THE MELTING LAYER

Early observations with vertically scanning radar revealed a decrease in echo intensity in a narrow altitude range near the zero-degree isotherm (melting layer). This feature has been named the "bright band" by radar meteorologists. Studies of the bright band and the area near it have continued through the years. Ekpenyong and Srivastava²⁰ carried out a theoretical study of the radar characteristics of the melting layer with the following assumptions:

- (1) The melting layer is assumed to have a steady thermal structure with a constant lapse rate which does not vary with time.
- (2) A steady supply of snowflakes of prescribed size distribution is maintained at the 0° C level, that is, at the top of the melting region.
- (3) There is no aggregation or breakup of snowflakes in the melting region.
- (4) Snowflakes have spherical shapes.
- (5) The melted water forms a coat around the snowflake.
- (6) Growth by collision and coalescence with cloud drops and by condensation of water vapor is ignored.

They concluded that the comparison of their theoretical results with observations indicated that aggregation and breakup of melting snowflakes is a distinct possibility.

They also conclude that the temperature lapse rate may be larger than assumed in their model in the lower parts of the melting layer.

Snowflakes and aggregates are known to be non-spherical and these authors suggest that polarization measurements be made in order to assess the effects of the non-spherical geometry of the scatterers.

19. Matsuo, T., and Sasyo, Y. (1982) Melting of snow pellets in the atmosphere, Papers in Meteor. and Geophysics, Tokyo, No. 33:55-64.

20. Ekpenyong, B., and Srivastava, R. (1970) Radar Characteristics of the Melting Layer- A Theoretical Study. University of Chicago Department of Geophysical Sciences and Illinois Institute of Technology, Department of Electrical Engineering, Technical Report No. 16, Lab. for Atm. Probing, Chicago, Illinois.

Wexler²¹ suggests breaking the melting layer into two zones:

- (1) Zone 1 extends from the 0° C isotherm to the peak of the radar reflectivity in the bright band.
- (2) Zone 2 extends from the peak of the radar reflectivity in the bright band to that point at which the snowflake is completely melted (that is, raindrops reach terminal velocity and radar reflectivity becomes nearly constant with height).

Figure 2 shows an idealized model of the melting layer based on the six assumptions noted, with snow above and rain below the freezing level. The plotted values for mean particle fall velocity, radar echo power, and melting band thickness are approximate values only. For example, we know that the peak echo power in the center of the bright band is normally 12-15 dB greater than in the snow above and 5-10 dB greater than in the rain below as schematically presented in Figures 2 and 3.

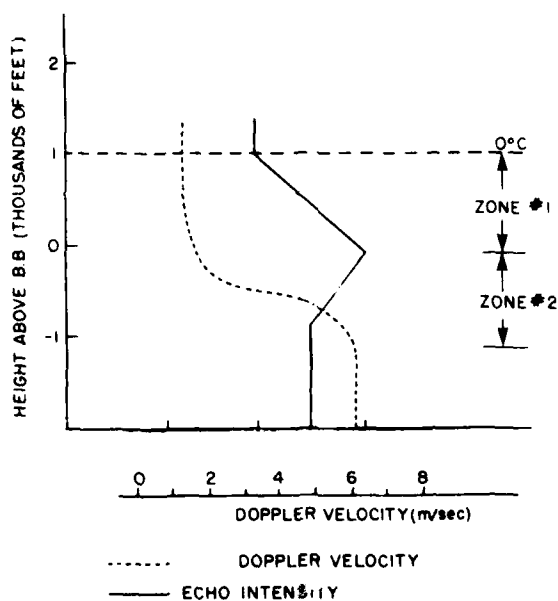


Figure 2. Idealized Model of the Melting Layer. This model divides the melting layer into two zones separated by the maximum of the radar return intensity.

21. Wexler, R. (1955) An evaluation of the physical effects of the melting layer. *Proceedings, Fifth Weather Radar Conference, American Meteorological Soc., Ft. Monmouth, New Jersey, Sept 1955, pp 329-334.*

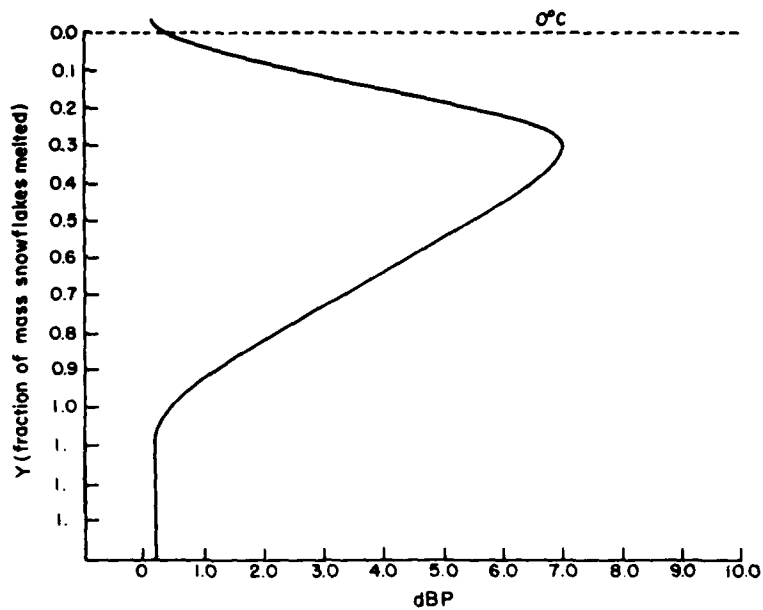


Figure 3. Power Received vs Mass Melted. From simplified model using change of index of refraction and change of fall speed from snow to rain

Based on the work of Ekpenyong and Srivastava²⁰ and Wexler,²¹ the following model can be defined.

4.1 Calculations

In Zone 1 we assume that melting takes place from the outside-in. The snow particles are becoming smaller but $|K|^2$ (K is the complex index of refraction) is changing from that for ice (0.18) to that for water (0.93):

$$|K|^2 = \frac{|\epsilon^2 - 1|^2}{|\epsilon^2 + 2|}$$

where

ϵ = dielectric constant,

K = complex index of refraction

and

$$|K_w|^2 = 0.930, |K_i|^2 = 0.18.$$

Let us assume that the mass of the snowflakes does not change as it melts.
We define

D_m = diameter of equivalent melted water drops,

D_o = diameter of snowflakes,

$$Z = \sum_{\text{vol}} D_m^6.$$

For large snow, (which generally occurs at the top of the melting layer) Cunningham²² found that

$$D_m = 0.4 D_o^{0.782}.$$

Now the radar received power (P_r) is given by

$$P_r = Cr^{-2} |K|^2 Z$$

where

C = radar constant for individual radars

r = distance between radar and particle.

For a completely melted snowflake,

$$P_{r(\text{water})} = Cr^{-2} |K_w|^2 D_m^6$$

22. Cunningham, R. M. (1978) Analysis of particle spectral data from optical array (PMS) 1-D and 2-D sensors. Preprints, Fourth Symposium on Meteorological Observations and Instrumentation, American Meteorological Soc., Denver, Colorado, 10-14 Apr 1978, pp 345-350.

and for the unmelted snowflake,

$$\begin{aligned} P_r(\text{ice}) &= Cr^{-2} |K_i|^2 (0.4 D_o)^{0.782,6} \\ &= Cr^{-2} |K_i|^2 D_m^6 . \end{aligned}$$

The increase in signal strength due to melting of the snowflake is

$$\frac{P_r(\text{water})}{P_r(\text{ice})} = \frac{|K_2|^2}{|K_i|^2} = \frac{0.93}{0.18} = 5.17$$

or 7.1 dB. This derivation depends on the assumption that the returned radar signal is a function of the water mass of the snowflake. According to Ekpenyong and Srivastava¹⁹ when 1/3 of the original volume of ice has melted into this film of water, the index of refraction will have changed from that for ice to that for water.

If at this point, there is any air inside the circumscribed sphere making the diameter of the circumscribed sphere greater than D_m and if the radar scattering process is to any extent a surface phenomenon as opposed to a mass property, then there could be an increase of P_r above and beyond that due to the ice/water phase change.

If one-third of the mass has melted then $(D_n)^3 = 2/3 (D_o)^3$ and the partially melted snowflake has a diameter of

$$D_n = (2/3)^{1/3} D_o = 0.87 D_o .$$

If it is encircled with water, then

$$\begin{aligned} P_r(n) &= Cr^{-2} |K_w|^2 D_n^6 \\ &= Cr^{-2} |K_w|^2 (0.87 D_o)^6 \\ &= Cr^{-2} |K_w|^2 [0.87 (D_m/0.4)^{1.28}]^6 \end{aligned}$$

and

$$\frac{P_r(n)}{P_r(\text{water})} = [0.87 (D_m/0.4)^{1.28}]^6 (1/D_m^6) = 494 \times D_m^{1.68} .$$

For D_m greater than 0.25 mm there would be an increase in signal.

For $D_o = 10$ mm to 1.0 cm diameter snow, the increase would be approximately

$$\frac{P_r(n)}{P_r(\text{water})} = \frac{(0.87 D_o)^6}{D_m^6} = 2152$$

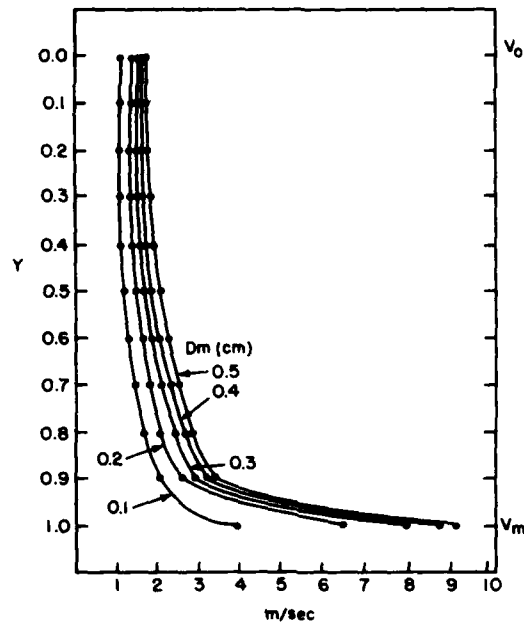
or 33 dB. Since this type of increase is not seen when using 5- and 10-cm wavelength radars, we must conclude that the return power is a mass and not a surface phenomenon for these wavelengths.

This means that if the mass of the snow particle does not change as it melts, the increase in radar received power (P) is due to the change in the complex index of refraction $|K|^2$ from ice (0.18) to water (0.93). The decrease of echo intensity below the bright band level is then the result of decreases of particle concentration caused by increases of fall velocity as the particles melt. The increase in velocity is about 5 to 1 (a typical case) and the concentration decreases in the same ratio. This change alone will account for a 7 dB decrease in echo intensity for the radar sampled volume at the bottom of the melting layer (Figure 3).

4.2 Generation of the Bright Band

In the basic melting layer model presented above, the bright band radar signal is generated by ice aggregate particles melting within the layer. The increase in echo intensity (Zone 1) is caused by the change in value of the complex index of refraction from that of ice to that of water. The decrease in signal intensity in Zone 2 is attributed to the increase in fall velocity in the melting layer as the particles complete melting. Figure 4 shows the fall velocities for snowflakes. The equations used to construct the figure are included. Not all of the processes involved are completely defined by accepted equations. Many of the parameters of the melting layer can be generated mathematically once one knows the particle size distribution entering the melting layer and the temperature lapse rate within the layer, but we know this is not a steady-state system and the internal dynamics of the melting layer must be included. In a melting layer with a steady-state thermal structure, the melting process described earlier contributes approximately 7 dB of signal intensity to the radar echo.

Numerous radar studies of the bright band show that at times the signal enhancement exceeds 7 dB, normally 12 to 15 dB. In these cases, other processes must contribute to signal enhancement. Some possible processes are discussed below.



$$D_m = 0.4 D_0^{0.782}$$

$$V_0 = 207 D_m^{0.31}$$

$$V_m = 965 - 1030 D_m^{-0.60}$$

$$Y = \text{FRACTION OF SNOWFLAKE MASS MELTED}$$

$$D_s = \text{DIAMETER OF INNER SNOW PORTION}$$

$$Y = (D^3 - D_s^3) / D_m^3$$

$$V = V_0 [1 - (1 - V_0^3 / V_m^3) Y]^{-1/3}$$

V = FALL SPEED OF PARTIALLY MELTED SNOWFLAKES
D = DIAMETER OF SNOWFLAKE WITH ITS WATER SHELL

Figure 4. Mass Melted vs Fall Velocity, Note the changes in fall velocity (v), as melting (y) nears completion

4.3 Processes in Zone 1

Any process which causes a growth in the mass (M) of a particle in Zone 1 would affect Z, the radar reflectivity, since Z is a function of M^2 . Possible processes here are aggregation, collision, coalescence, and deposition. Estimates of the relative magnitude of these effects are dependent on the meteorological conditions existing during the measurement exercise.

Another possible process in Zone 1 is concerned with signal strength variations due to the shape and orientation of scatterers in the bright band in relation to the polarization of the incident radiation. In conventional radar systems, the only component of the received signal that reaches the radar is that which is polarized in the same plane as the incident wave so that T_{xx} (intensity at the same polarization) is a measure of the echo intensity to be expected in the main channel of the receiver.

Spherical particles reflect all of the backscattered radiation with a polarization parallel to the transmitted polarization \bar{I}_{xx} . Non-spherical particles reflect some portion of the scattered radiation with a polarization orthogonal to that of the transmitted radiation.

A theoretical study by Labrum²³ of melting ice particles shows that the increase in \bar{I}_{xx} caused by melting is much greater for clouds of non-spherical ice particles than for clouds of ice spheres. This is illustrated in Figure 5. The backscatter intensity of non-spherical particles on melting increases in backscatter intensity stops and then starts to decrease until it ends when the particles finally become spherical waterdrops. A radar observation at vertical incidence at the height of the maximum depolarized backscatter was presented by Krehbiel and Brock.¹⁷

These measurements indicate that the small particles with fall speeds of 3-4 m sec⁻¹ had an orthogonal polarized backscatter that was 22-24 dB below the backscatter parallel to the transmitted polarization, that is, these particles appear almost spherical to the radar. Since these particles are primarily wet (partially melted) snow, the fall speeds are somewhat faster than those often observed with dry snow. At larger Doppler velocities, however, the orthogonally polarized backscatter was relatively stronger, being only about 10 dB below the parallel-polarized backscatter. This means that the larger particles with fall speeds of 4.5-9.0 m sec⁻¹ appeared more non-spherical to the radar. These particles, however, were the source of only a small fraction of the total received power in either polarization at this height. The use of this type of data to describe fully the evolution of hydrometeor types, sizes and number concentrations through the melting layer requires a full set of observations of the type taken at the center of the maximum orthogonal return, extending from well above to well below the zero degree isotherm. Several investigators have observed the entire melting layer with dual polarization backscatter measurements, (for example, Humphries and Barge²⁴). These show that the maximum depolarized backscatter occurs about 100-300 m below the maximum reflectivity in the bright band. This means the value of the index of refraction factor $|K|^2$ of the particles falling through the melting layer changes from that of ice to that of water before the large nonspherical particles begin to collapse. It also means that the portion of depolarized backscatter radiation coincident in time and space with the maximum reflectivity in the bright band does not contribute to this peak bright band return. Recent studies of the melting of large ice spheres, by Rasmussen, Levizzani and Pruppacher⁷ show that when an ice sphere melts,

23. Labrum, N. (1952) The scattering of radio waves by meteorological particles, J. Appl. Phys. No. 12:1324.

24. Humphries, R.G., and Barge, B.L. (1979) Polarization and dual wave length radar observations of the bright band. IEEE Trans. Geoscience Electronics GE-17(No. 4):190-195.

the meltwater from the lower half of the particle is advected into a torus near the equator of the particle. This ring torus of accumulated water changes the overall shape of the original spherical particle to a distorted oblate spheroid. This change in shape due to melting agrees well with the change in large particles observed by the coherent dual polarized radars. The overall shape of small melting ice spheres remains spherical, which agrees well with the coherent dual polarized radar observation.

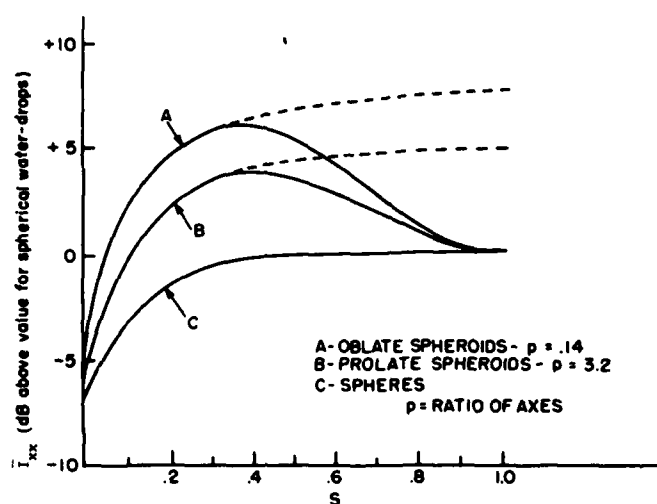


Figure 5 Changes in Back Scattering From Cloud During Melting. S = melting ratio. Broken lines represent variation assuming particle shape remains unchanged. Full lines assume that the collapse begins when $S = 0.33$ (from Labrum²³ Figure 4)

Measurements by dual-polarization radar show that the value of the complex correlation factor ρ decreases in the melting layer. This factor is a measure of the degree of common alignment of the particles in the radar beam. This lower value of ρ indicates that the particles within the melting layer are more randomly orientated than those above or below it. Thus, the orientation of the particles do not contribute to the enhancement of the radar signal from the melting layer.

4.4 Processes in Zone 2

If the bright band signal decreases more than 6 dB in Zone 2 of this model, there must be some process leading to this extra decrease. One possibility is a break-up of water droplets with diameters in excess of 5 mm, a very realistic possibility. A breakup of 5-mm water droplets into 5 equi-volume droplets would result in a decrease in intensity of approximately 7 dB. Another possible process in Zone 2 is concerned with the shedding of meltwater. Since shedding for the large ice particles does not begin until 20 or 30 percent of the mass has melted, for the most part, this shedding process occurs in Zone 2 and results in a decrease in signal intensity.

5. CONCLUSION

The melting layer remains a crucial area within a cloud system. A thorough study using surface observations, radar observations, and aircraft flights would be of great benefit to the scientific community.

The AFGL study provided new information on the way in which ice crystals melt and the way radar views the melting layer. The literature survey, which is found in Appendix A of this report will be a valuable starting point for any future study of the melting layer. Other observations resulting from the program follow.

5.1 Ice Crystal and Snowflake Melting

Snowflake and ice crystal melting were observed and the observations were compared to theories.

Among the observations were the following:

- (1) Snowflakes melt at a rate slower than that predicted by theory.
- (2) Although snowflakes generally do melt from the outside in, they may do so in an irregular manner.
- (3) The vertical stability of a snowflake depended upon its size and shape.
- (4) A crystal will generally not form a single droplet; rather, it will split into several droplets.
- (5) The speed with which a crystal melts will vary with its size. Small crystals will melt faster, however, all crystals larger than 3 mm will melt in about the same time.
- (6) The rate at which snow pellets melt in the atmosphere is influenced by air temperature, relative humidity, snow pellet size and density.

5.2 Radar Observations

Further examination of radar data concerning the melting layer, and new information available since 1981 have led to the following update of the findings reported in Appendix E of Schaller et al.¹

The increase in the radar signal intensity in the so-called bright band can be explained by the following processes:

- (1) The complex index of refraction for ice crystals $|K_i|^2 = 0.180$ on melting changes to $|K_w|^2 = 0.930$ for water.
- (2) Any process which causes a growth in the mass of particles or aggregation in the melting zone would increase Z , the radar reflectivity.
- (3) The shape and orientation of the particles in the bright band do not increase the radar echo intensity in the main channel of the receiver.

The following processes tend to decrease the radar echo intensity in the bright band:

- (1) The increase in fall velocity of the melted particles decreases the number of scatters in the radar beam.
- (2) The break-up of water particles with large diameters decreases Z , the radar reflectivity.
- (3) The shedding of meltwater by the large particles decreases Z the radar reflectivity factor.

The size of the particles in the melting layer in this review are assumed to be small in size compared to the radar wavelength that is,

α = size parameter

$$\alpha = \frac{\pi D}{\lambda}$$

where

D = diameter of particle

λ = wavelength of incident radiation .

When $\alpha < 0.13$ Rayleigh approximation applies, we assume Rayleigh scattering. The correctness of this assumption is very evident in calculations with partially melted snow. For a surface rather than a mass relationship, the returned radar signal was calculated to be much larger than actually observed, while for a mass relationship theory agrees well with observations.

References

1. Schaller, R.C., Cohen, I.D., Barnes, A.A., and Gibbons, L.C. (1982) A Survey of Melting Layer Research, AFGL-TR-82-0007, AD A11524.
2. Stewart, R.E. (1982) Deep 0° C isothermal layers within precipitation bands. Preprints, Conference on Cloud Physics, American Meteorological Soc., Chicago, Illinois, 15-18 Nov. 1982, pp 570-571.
3. Cohen, I.D. (1983) Preliminary results of the AFGL aircraft icing study. Preprints, Ninth Conference on Aerospace and Aeronautical Meteorology, American Meteorological Soc., Omaha, Nebraska, 6-9 June 1983, AFGL-TR-83-0147, AD A129843.
4. Newman, S.B. (1982) A preliminary investigation of snowflake aggregation near the melting layer. Preprints, Conference on Cloud Physics, American Meteorological Soc., Chicago, Illinois, 15-18 Nov 1982, pp 381-383.
5. Lo, K.K., and Passarelli, R.E. (1982) A Three-parameter snow growth model. Preprints, Conference on Cloud Physics, American Meteorological Soc., Chicago, Illinois, 15-18 Nov 1982, pp 197-200.
6. Fukuta, N., Savage, R.C., Donovan, G.J., and Liu, C.M. (1983) The Microphysics of Snow Crystal and Snowflake Melting, AFGL-TR-83-0066, AD A129030.
7. Rasmussen, R.M., Levizzani, V., and Pruppacher, H.R. (1982) A theoretical and wind tunnel study of the melting behavior of small and large spherical ice particles. Preprints, Conference on Cloud Physics, American Meteorological Soc., Chicago, Illinois, 15-18 Nov 1982, pp 388-391.
8. Bohren, C.F., and Battan, L.J. (1981) Backscattering of microwaves by spongy ice spheres. Preprints, Twentieth Conference on Radar Meteorology, American Meteorological Soc., Boston, Massachusetts, 30 Nov - 3 Dec 1981, pp 385-388.
9. Bringi, V.N., Seligna, T.A., Hall, M.P.M., Cherry, S.M., Goddard, J.W.F., and Kennedy, G.R. (1981) Dual polarization radar: Techniques and applications, Atmospheric Technology: Recent Progress in Radar Meteorology, National Center for Atmospheric Research: No. 13, 1981.

10. Metcalf, J. I. (1981) Coherent polarization-density radar concepts and applications, Recent Progress in Radar Meteorology, National Center for Atmospheric Research, Atmospheric Technology, No. 13, 1981, pp 22-32.
11. Battan, L. J. (1959) Radar Meteorology, University of Chicago Press, Chicago, Illinois, 161 pp.
12. Kinzer, G. D., and Cobb, W. E. (1956) Laboratory measurements of the growth and collection efficiency of raindrops, J. Meteorol. 13:295-301.
13. Kinzer, G. D. (1958) Laboratory measurements and analysis of the growth and collection efficiency of cloud droplets, J. Meteorol. 15:130-148.
14. Donovan, G. J. (1982) The Melting of Natural Snowflakes Suspended in a Vertical Wind Tunnel, M.S. Thesis, University of Utah, 137 pp.
15. Savage, R. C. (1982) Melting of Natural Ice Crystals in a Vertical Wind Tunnel, M.S. Thesis, University of Utah, 117 pp.
16. Rasmussen, R. M., and Pruppacher, H. R. (1982) A wind tunnel and theoretical study of the melting behavior of atmospheric ice particles, 1. A wind tunnel study of frozen drops of radius 500 μm , J. Atmos. Sci. 39:152-158.
17. Krehbiel, P. R., and Brock, M. (1982) Coherent dual-polarized observations of the radar return from precipitation. Preprints, URSI-IEE-Symposium on Multiple Parameter Radar Measurements of Precipitation, Bornemounth, U. K., pp 1-7.
18. Kropfli, R. A., Moninger, W. R., and Pasqualucci, F. (1982) Cloud particle identification with dual polarization K-Band Doppler radar. Preprints, Conference on Cloud Physics, American Meteorological Soc., Chicago, Illinois, 15-18 Nov. 1982, pp 392-395.
19. Matsuo, T., and Sasyo, Y. (1982) Melting of snow pellets in the atmosphere, Papers in Meteor. and Geophysics, Tokyo, No. 33:55-64.
20. Ekpenyong, B., and Srivastava, R. (1970) Radar Characteristics of the Melting Layer-A Theoretical Study. University of Chicago Department of Geophysical Sciences and Illinois Institute of Technology, Department of Electrical Engineering, Technical Report No. 16, Lab. for Atm. Probing, Chicago, Illinois.
21. Wexler, R. (1955) An evaluation of the physical effects of the melting layer. Proceedings, Fifth Weather Radar Conference, American Meteorological Soc., Ft. Monmouth, New Jersey, Sept 1955, pp 329-334.
22. Cunningham, R. M. (1978) Analysis of particle spectral data from optical array (PMS) 1-D and 2-D sensors. Preprints, Fourth Symposium on Meteorological Observations and Instrumentation, American Meteorological Soc., Denver, Colorado, 10-14 Apr 1978, pp 345-350.
23. Labrum, N. (1952) The scattering of radio waves by meteorological particles, J. Appl. Phys. No. 12:1324.
24. Humphries, R. G., and Barge, B. L. (1979) Polarization and dual wave length radar observations of the bright band. IEEE Trans. Geoscience Electronics GE-17(No. 4):190-195.

Appendix A

Reference List

This reference list adds 50 entries to Appendix A of AFGL-TR-82-0007. For the reader's convenience, the entire list is included. The list is in alphabetical order.

The rating system used in the aforementioned report is also used here. The numbers in parenthesis after each entry indicate the relevance of information as follows:

1. VERY RELEVANT - Contains much helpful information.
2. SOMEWHAT RELEVANT - Has some valuable information.
3. POSSIBLY RELEVANT - Parts may be useful.
4. NOT VERY RELEVANT - Of limited use; may provide background material.
5. NOT RELEVANT - Not directly applicable.

1. Aden, A. (1951) Electromagnetic scattering from spheres with sizes comparable to the wavelength, J. Appl. Phys. 22:601-605. (1)
2. Affronti, F., and Ciattaglia, L. (1970) Detection of the bright band layer with the Meteor-50 radar, Rivista di Meteorologia Aeronautica, Rome, 30(No. 4):47-53. (1)
3. Atlas, D., Hardy, K. R., and Joss, J. (1964) Radar reflectivity of storms containing spongy hail, J. Geophys. Res. 69:1955-1961. (3)
4. Atlas, D., Harper, W.G., and Ludlam, F. H. (1980) Radar scatter by large hail, Quart. J. Roy. Meteorol. Soc. 88:468-482. (3)
5. Atlas, D., Kerker, M., and Hitschfeld, W. (1953) Scattering and attenuation by non-spherical atmospheric particles, J. Atmos. and Terr. Phys. 3:108-119. (2)
6. Atlas, D., Tatehira, R., Srivastava, R., Marker, W., and Carbone, R. (1969) Precipitation-induced mesoscale wind perturbations in the melting layer, Quart. J. Roy. Meteorol. Soc. 95:544-560. (1)
7. Austin, P.M., and Bemis, A. (1950) A quantitative study of the bright band in radar precipitation echoes, J. Meteorol. 1:165-171. (1)
8. Aydin, K., Seliga, T.A., and Bringi, V. N. (1982) Differential radar scattering properties of hail and mixed phase hydrometeors, Preprints, URSI-IEE Symp. on Multiple Parameter Radar Measurements of Precipitation, Bournemouth, U.K.: pp 9-19. (3)
9. Bailey, J., and Macklin, W. (1968) Heat transfer from artificial hailstones, Quart. J. Roy. Meteorol. Soc. 94:93-98. (3)
10. Battan, L. J. (1959) Radar Meteorology, U. of Chicago Press. (2)
11. Battan, L. J. (1973) Radar Observations of the Atmosphere, U. of Chicago Press. (2)
12. Battan, L. J. (1977) Rain resulting from melting ice particles, J. Appl. Meteorol. 16:595-604. (3)
13. Battan, L. J., and Bohren, C. F. (1980) Radar backscattering by inhomogeneous precipitation particles, J. Atmos. Sci. 37:1821-1827. (3)
14. Battan, L. J., and Bohren, C. F. (1982) Radar backscattering by melting snowflakes, J. Appl. Meteorol. 21:1937-1938. (2)
15. Battan, L. J., and Merman, B. M. (1962) The radar cross section of spongy ice spheres, J. Geophys. Res. 67(No. 13):5139-5145. (4)
16. Battan, L. J., and Theiss, J. (1976) Rain resulting from melting snow, Proc. Int. Conf. on Cloud Physics, Boulder, CO, pp 567-571. (2)
17. Battan, L. J., Thiess, J., and Kassander, A., Jr. (1964) Some Doppler radar observations of a decaying thunderstorm, Proc. Eleventh Weather Radar Conf., Boston, MA. pp 362-365. (3)
18. Bigg, E. K. (1953) The formation of atmospheric ice crystals by the freezing of droplets, Quart. J. Roy. Meteorol. Soc. 79:510-519. (2)
19. Biswas, K., Ramana Murty, Bh. V., and Roy, A. (1960) Freezing rain at Delhi and associated melting band characteristics, Indian Journal of Meteorology and Geophysics, Spec. No. 13, (Symposium on Physics of Clouds and Rain in the Tropics): pp 137-142. (1)
20. Blanchard, D. C. (1957) The supercooling, freezing and melting of giant water-drops at terminal velocity in air, Proc. Conf. on Physics of Cloud and Precip. Particles, Pergamon Press. pp 233-249. (3)

21. Browne, I.C. (1952) Radar Studies of Clouds, Ph.D. Thesis, Cambridge University, England. (2)
22. Browne, I.C., and Robinson, N. (1952) Cross-polarization of the radar melting band, Nature 170:1078-1079. (2)
23. Byers, H., and Coons, R. (1974) The 'bright line' in radar cloud echoes and its probable explanation, J. Meteorol. 4:75-81. (2)
24. Carbone, R.E. (1982) A severe frontal rainband, Part I: Stormwide hydrodynamics structure, J. Atmos. Sci. 39:258-279. (3)
25. Cheng, R. (1978) Ice pellet melting - ejection of microdroplets, Bull. Am. Meteorol. Soc. 59:512-513. (4)
26. Cheng, I., and English, M. (1982) Hailstone concentration and size at the ground level, Preprints, Conference on Cloud Physics, Chicago, Illinois, 13-16 Nov 1982, pp 423-426. (3)
27. Cunningham, R. (1974) A different explanation of the bright-line, J. Meteorol. 4:163. (1)
28. Dissanayake, A.W., Chandra, M., and Watson, P.A. (1982) Theoretical predictions of differential reflectivity using polarization radar for various types of hydrometeors, Preprints, URSI-ILE Symp. on Multiple Parameters Radar Measurements of Precipitation, Bournemouth, U.K. pp 20-23. (3)
29. Donovan, G.J. (1982) Melting of Natural Snowflakes Suspended in a Vertical Wind Tunnel, M.S. Thesis, University of Utah. (1)
30. Doviak, R., and Weil, C. (1972) Bistatic radar detection of the melting layer, J. Appl. Meteorol. 11:1012-1016. (4)
31. Drake, J., and Mason, B.J. (1966) The melting of small ice spheres and cones, Quart. J. Roy. Meteorol. Soc. 92:500-509. (2)
32. DuToit, P. (1967) Doppler radar observations of drop sizes in continuous rain, J. Appl. Meteorol. 6:1082-1087. (2)
33. Dyer, R.M. (1968) Doppler measurements in stratiform rain, Proc. Thirteenth Radar Met. Conf., Montreal, Quebec, pp 144-147. (3)
34. Dyer, R.M. (1968) Particle fall speeds within the melting layer, Proc. 14th Radar Met. Conf., Tucson, Arizona, pp 157-160. (2)
35. Dyer, R.M., Berthel, R.O., and Izumi, Y. (1981) Techniques for measuring liquid water content along a trajectory, AFGL-TR-81-0082, AD A102922. (3)
36. Ekpenyong, B., and Srivastava, R (1970) Radar characteristics of the melting layer—a theoretical study, Univ. of Chicago Dept. of Geophys. Sciences and Illinois Inst. of Tech. Dept. of Elec. Eng., Technical Report No. 16, Lab. for Atm. Probing, Chicago, Illinois. (1)
37. Fernald, F., and Dennis, A. (1964) Measurement of Forward-heater Cross Sections in the Melting Layer, NASA-CR-57468, pp 178-181. (1)
38. Fleagle, R.J., and Businger, J.A. (1963) An Introduction to Atmospheric Physics, Academic Press, New York. (2)
39. Fletcher, N.H. (1962) The Physics of Rainclouds, Cambridge University Press, England. (2)
40. Fukuta, N. (1969) Experimental studies on the growth of small ice crystals, J. Atmos. Sci. 26:522-531. (3)
41. Fukuta, N., Savage, R.C., Donovan, G.J., and Liu, C.M. (1983) The Microphysics of Snow Crystal and Snowflake Melting, AFGL-TR-83-0066, AD A129030. (1)

42. Fukuta, N., and Walter, I. (1970) Kinetics of hydrometeor growth from a vapor-spherical model, J. Atmos. Sci. 27:1160-1172. (3)
43. Fukuta, N. (1973) Thermodynamics of cloud glaciation, J. Atmos. Sci. 30:1645-1649. (2)
44. Fukuta, N., Neubauer, L., and Erickson, D. (1979) Final Report to NSF Under Grant No. Env 77-15346. (5)
45. Fukuta, N., Guo, W., and Guo, T. (1974) Kinetics of hydrometeor growth-spheroidal model, Preprints, Conf. on Cloud Physics, Tucson, Arizona, pp 67-70. (4)
46. Fukuta, N., Kowa, M.W., and Gong, N.H. (1982) Determination of ice crystal growth parameters in a supercooled cloud tunnel, Preprints, Conf. on Cloud Physics, Chicago, Illinois, 13-16 Nov 1982, pp 325-328. (2)
47. Fukuta, N., Paik, Y., Saxena, W., Armstrong, J., Gorove, A., Guo, T., and Guo, W. (1973) Final Report to NSF Under Grant No. GA-29525. (5)
48. George, J.J. (1960) Weather Forecasting for Aeronautics, Academic Press, New York, pp 410-415. (1)
49. Great Britain Meteorological Office (1965) Ice Accretion on Aircraft. (2)
50. Goldhirsch, J., and Walsh, E.J. (1982) Measurements of precipitation with Topex-class dual frequency satellite altimeters, Preprints, URSI-IEEE Symp. on Multiple Parameter Radar Measurements of Precipitation, Bournemouth, U.K., pp 95-101. (2)
51. Gunn, R., and Kinzer, G. (1949) The terminal velocity of fall for water droplets in stagnant air, J. Meteorol. 6:243-248. (1)
52. Gunn, K., and Marshall, J. (1958) The distribution with size of aggregate snowflakes, J. Meteorol. 15:452-461. (1)
53. Gupta, B., Mani, A., and Ventikeshwaran, S. (1961) Some observations of melting band in radar echoes at Poona, Indian J. Meteorol. and Geophys. 12:317-322. (2)
54. Gvelesiani, A., and Kartsvadze, A. (1968) On the melting of spherical hailstones, Proc. Int. Conf. on Cloud Physics, Toronto, Ontario, pp 422-425. (3)
55. Hall, M.P.M., Goodard, J.W.F., and Cherry, S.M. (1982) Identification of hydrometeors and other targets by dual-polarization radar, Preprints, URSI-IEEE Symp. on Multiple Parameter Radar Measurements of Precipitation, Bournemouth, U.K., 5 pp. (4)
56. Harrold, T., and Browning, K. (1967) Meso-scale wind fluctuations below 1500 metres, Meteorology Magazine, 96:367-379. (3)
57. Herman, B.M., and Battan, L.J. (1961) Calculations of Mie backscattering from melting ice spheres, J. Meteorol. 18:468-478. (2)
58. Heymsfield, G. (1979) Doppler radar study of a warm frontal region, J. Atmos. Sci. 36:2093-2107. (4)
59. Hines, E.L., and Watson, P.A. (1982) Application of edge detection techniques to detection of the bright-band in radar data, Preprints, URSI-IEEE Symp. on Multiple Parameter Radar Measurements of Precipitation, Bournemouth, U.K., pp 198-200. (1)
60. Hobbs, P.V. (1973) Ice in the atmosphere: A review of the present position, Physics and Chemistry of Ice, Royal Society of Canada, Ottawa, pp 308-319. (1)
61. Hoffer, T., and Mallon, S. (1968) A vertical wind tunnel for small droplet studies, J. Appl. Meteorol. 7:290-292. (5)

62. Hogg, D., Guiraud, F., and Burton, E. (1980) Simultaneous observations of cool cloud liquid by ground-based microwave radiometry and icing of aircraft, J. Appl. Meteorol. 19:893-895. (2)
63. Hooper, J., and Kippax, A. (1950) The bright band: a phenomenon associated with radar echoes from falling rain, Quart. J. Roy. Meteorol. Soc. 76:125-131. (1)
64. Houze, R., Jr., Locatelli, J., and Hobbs, P. (1976) Dynamics and cloud microphysics of the rainbands in an occluded frontal system, J. Atmos. Sci. 33:1921-1936. (2)
65. Humphries, R.G., and Barge, R.L. (1979) Polarizations and dual-wave-length radar observations of the bright band, IEEE Trans. Geosci. Elect. GE-17:190-195. (1)
66. Imai, I., Fujiwara, M., Ichimura, I., and Toyama, V. (1955) Radar reflectivity of falling snow, J. Meteorol. Res., Tokyo, 7:422-425. (1)
67. Iribarne, J. V., and Klemes, M. (1970) Electrification associated with breakup of terminal velocity drops in air, J. Atmos. Sci. 27:927-936. (4)
68. Jameson, A. R., and Srivastava, R. C. (1978) Dual-wavelength-Doppler radar observations of hail at vertical incidence, J. Appl. Meteorol. 17:1694-1703. (4)
69. Johnson, D. (1981) Analytical solution for cloud drop concentration, J. Atm. Sci. 38:215-218. (5)
70. Johnson, A. B., and Jameson, A. R. (1982a) Persistence and partial melting of ice particles below the 0° C isotherm, Preprints, URSI-IEE Symp. on Multiple Parameter Radar Measurements of Precipitation, Bournemouth, U.K., pp 28-30. (1)
71. Johnson, A. B., and Jameson, A. R. (1982b) On the melting of graupel and frozen raindrops, Conf. on Cloud Physics, Chicago, Illinois, 13-16 Nov 1982, pp 384-387. (2)
72. Joss, J., and Aufdermaur, A. N. (1965) Experimental determination of radar cross sections of artificial hailstones containing water, J. Appl. Meteorol. 4:723-726. (4)
73. Kerker, M., Langleben, P., and Gunn, K. (1951) Scattering of microwaves by a melting spherical ice particle, J. Meteorol. 8:424. (2)
74. Kinzer, G. D. (1958) Laboratory measurements and analysis of the growth and collection efficiency of cloud droplets, J. Meteorol. 15:133-148. (5)
75. Kinzer, G. D., and Cobb, W. E. (1956) Laboratory measurements of the growth and collection efficiency of raindrops, J. Meteorol. 13:295-301. (5)
76. Kobavaski, H. K. (1981) Effect of hail, snow and melting hydrometeors on millimeters and radio waves, Army Electronics Research and Development Command, AD A1017429. (1)
77. Knight, C. A. (1979) Observations of the morphology of melting snow, J. Atmos. Sci. 36:1123-1130. (1)
78. Kowa, M. (1981) Determination of Ice Crystal Growth Parameters in a Super-cooled Cloud Tunnel, M.S. Thesis, University of Utah. (2)
79. Kravtsov, H. (1946) Heat transfer from spheres to flowing media, Physica, 12:61-80. (2)
80. Krehbiel, P. R., and Brook, M. (1982) Coherent dual-polarized observations of the radar return from precipitation, Preprint, URSI-IEE Symp. on Multiple Parameter Radar Measurements of Precipitation, Bournemouth, U.K., pp. (2)

81. Kropfli, R. A., Moninger, W. R., and Pasqualucci, F. (1982) Cloud particle identification near the melting layer with dual polarization K band Doppler radar, Preprints, Conf. on Cloud Physics, Chicago, Illinois, 13-16 Nov 1982, pp 412-415. (1)
82. Kropfli, R. A., Pasqualucci, F., and Moninger, W. R. (1982) Circular depolarization ratio measurement with a 35 GHz radar during the cooperative precipitation experiment, Preprint, URSI-IEE SYMP. on Multiple Parameter Radar Measurements of Precipitation, Bournemouth, U.K., pp. 123-126. (2)
83. Labrum, N. (1952) The scattering of radio waves by meteorological particles, J. Appl. Phys. 23:1324-1330. (2).
84. Lagourette, B. (1976) Study of dielectric properties of disperse microcrystals of ice near melting temperature, J. De Physique. 37:945-954. (3)
85. Langleben, M. (1954) The terminal velocity of snowflakes, Quart. J. Roy. Meteorol. Soc. 80:174-181. (1)
86. LeClair, B. P., Hamielec, A. E., Pruppacher, H. R., and Hall, W. D. (1972) A theoretical and experimental study of the internal circulation in water drops falling at terminal velocity in air, J. Atmos. Sci. 29:728-740. (4)
87. Lhermitte, R., and Atlas, D. (1963) Doppler fallspeed and particle growth in stratiform precipitation, Proc. Tenth Conf. on Radar Met., Washington, DC, pp 297-302. (1)
88. Lighthart, L. P. (1982) Measurements with the DELFT FM-CW radar during rain events, Preprint, URSI-IEE Symp. on Multiple Parameter Radar Measurements of Precipitation, Bournemouth, U.K., pp 153-159. (3)
89. List, R. (1963) General heat and mass exchange of spherical hailstones, J. Atmos. Sci. 20:189-197. (3)
90. List, R., and Dussault, J. (1967) Quasi-steady-state icing and melting conditions and heat and mass transfer of spherical and spheroidal hailstones, J. Atmos. Sci. 24:522-529. (2).
91. List, R., and Parsons, D. (1968) Simulation of the total heat transfer of spherical hailstones, Helvetica Physica Acta 41:1016-1020. (3)
92. List, R., and Schemenauer, R. (1971) Free fall behavior of planar snow crystals, conical graupel and small hail, J. Atmos. Sci. 28:110-115. (2)
93. Lo, K., and Passarelli, R. (1982) A new sampling technique for quantitative airborne studies of snow growth: theory and examples, J. Atmos. Sci. 39:697-706. (1)
94. Lo, K. (1983) Growth Processes of Snow, Ph. D. Thesis, M.I.T., Cambridge, Massachusetts, Contract No. F19620-80-C-0021, Final Report, AFGL-TR-83-0105. (1)
95. Locatelli, J., and Hobbs, P. (1974) Fall speeds and masses of solid precipitation particles, J. Geophys. Res. 19:2185-2197. (1)
96. Low, R. D. (1980) One-dimensional Cloud Microphysical Models for Central Europe and Their Optical Properties, OSD 1366, Atmospheric Sciences Laboratory, White Sands Missile Range, New Mexico. (2)
97. Ludlam, R. H. (1958) The hail problem, Nubila 1:11-96. (3)
98. Ludlam, R. H. (1980) Clouds and Storms, The Pennsylvania State University Press, University Park, Pennsylvania, 488 pp. (2).
99. Macklin, W. (1963) Heat transfer from hailstones, Quart. J. Roy. Meteorol. Soc. 89:360-363. (3)
100. Macklin, W. (1964) Factors affecting the heat transfer from hailstones, Quart. J. Roy. Meteorol. Soc. 90:84-90. (3)

101. Magono, C. (1953) On the growth of snowflake and graupel, Science Reports of Yokohama University, 3:33-40. (1)
102. Magono, C., and Nakamura, T. (1965) Aerodynamic studies of falling snowflakes, J. Meteorol. Soc. Japan, 43:139-147. (1)
103. Marier, D. (1967) The Sleet Bright Band, Report No. WBTM-ER-26, Weather Bureau Eastern Region Headquarters, Garden City, New York. (2)
104. Mason, B. J. (1955) Radar evidence for aggregation and orientation of melting snowflakes, Quart. J. Roy. Meteorol. Soc. 81:262-264. (1)
105. Mason, B. J. (1956) On the melting of hailstones, Quart. J. Roy. Meteorol. Soc. 82:209. (3)
106. Mason, B. J. (1971) The Physics of Clouds, Clarendon Press, London, England. (2)
107. Matsou, T., and Sasyo, Y. (1981) Empirical formula for the melting rate of snowflakes, J. Meteorol. Soc. Japan, 59:1-9. (1)
108. Matsou, T., and Sasyo, Y. (1981) Melting of snowflakes below freezing level in the atmosphere, J. Meteorol. Soc. Japan, 59:10-25. (1)
109. Matsou, T., and Sasyo, Y. (1981) Non-melting of snowflakes observed in sub-saturated air below freezing level, J. Meteorol. Soc. Japan, 59:26-32. (1)
110. Matsou, T., and Sasyo, Y. (1982) Melting of snow pellets in the atmosphere, Papers in Meteorol. and Geophysics Tokyo, No. 33:55-64. (2)
111. McCormick, K. (1970) Reflectivity and attenuation observations of hail and the radar bright band, Proc. 14th Radar Met. Conf., Tucson, Arizona, pp 19-24. (2)
112. Medzhitov, R. (1964) Cloud microstructure and icing of airplanes over Belorussia, Moscow Tsentralnyi Institut Prognozov, Trudy, 136:101-115. (2)
113. Metcalf, J. I. (1981) Coherent polarization-density radar concepts and applications, Recent Progress in Radar Meteorology, National Center for Atmospheric Research, Atmospheric Technology, No. 13, pp 22-32. (4)
114. Moninger, W. R., Kropfli, R. A., and Pasqualucci, F. (1982) Dual-polarization radar data in clouds and precipitation: Correlation analysis and comparison with in-situ measurements, Preprint, URSI-IEE Symp. on Multiple Parameter Radar Measurements of Precipitation, Bournemouth, U.K., pp 127-132. (2)
115. Moninger, W. R., Kropfli, R. A., and Pasqualucci, F. (1982) Hydrometeor orientations and alignments as measured by dual-polarization Doppler radar during SCOPE, Preprint Conf. on Cloud Physics, Chicago, Illinois, 13-16 Nov 1982, pp 392-395. (2)
116. Newman, S. B. (1982) A preliminary investigation of snowflake aggregation near the melting layer in stratiform clouds, Preprint, Conf. on Cloud Physics, Chicago, Illinois, 13-16 Nov 1982, pp 381-383. (1)
117. Ohtake, T. (1965) Preliminary observations of size distribution of snowflakes at just above and below the melting layer, Proc. Int. Conf. on Cloud Physics, Tokyo, Japan, pp 271-275. (1)
118. Ohtake, T. (1969) Observations of the size distribution of hydrometeors through the melting layer, J. Atmos. Sci. 26:545-557. (1)
119. Pace, J. (1980) Microphysical and Thermodynamic Characteristics Through the Melting Layer, Report No. ASI26, Dept. of Atmospheric Science, M.S. Thesis, University of Wyoming, Laramie, Wyoming. (1)

120. Pace, J., and Stewart, R. (1980) The effect of melting particles on the thermodynamic and microphysical characteristics of Sierra Nevada winter storms, VIII Int. Conf. on Cloud Physics, Clermont-Ferrand, France, pp 563-564. (1)
121. Passarelli, R. (1976) Coordinated Doppler radar and aircraft observations of riming growth and drop breakup in stratiform precipitation, Proc. Int. Conf. on Cloud Physics, Boulder, Colorado, pp 500-505. (2)
122. Passarelli, R. (1978) Theoretical and observational study of snow-size spectra and snowflake aggregation efficiencies, J. Atmos. Sci. 35:882-889. (1)
123. Pruppacher, H. R., and Bearech, K. V. (1975) A wind tunnel investigation of the internal circulation and shape of water drops falling at terminal velocity in air, Quart. J. Roy. Meteorol. Soc. 96:247-256. (4)
124. Pruppacher, H. R., and Rasmussen, R. (1979) A wind tunnel investigation of the rate of evaporation of large water droplets falling at terminal velocity in air, J. Atmos. Sci. 36:1255-1260. (4)
125. Pruppacher, H., and Klett, J. (1980) Microphysics of Clouds and Precipitation, Reidel Publishing Co., Dordrecht, Holland. (2)
126. Pruppacher, H., and Neiburger, M. (1968) Design and performance of the UCLA wind tunnel, Proc. Int. Conf. on Cloud Physics, Toronto, Ontario, Canada, pp 389-392. (5)
127. Ramana Murty, B., Roy, A., and Biswas, K. (1965) Radar echo intensity below the bright band, J. Atmos. Sci. 22:91-94. (1)
128. Richter, J., and Hitney, H. (1980) The effects of atmospheric refractivity on microwave propagation, Atmospheric Water Vapor, Academic Press, New York, New York. (5)
129. Rogers, R. R. (1976) A Short Course in Cloud Physics, Pergamon Press, New York, New York. (2)
130. Rasmussen, R. M., and Pruppacher, H. R. (1982) A wind tunnel and theoretical study of the melting behavior of atmospheric ice particles, A wind tunnel study of frozen drops of radius $< 500 \mu\text{m}$, J. Atmos. Sci. 39:152-158. (1)
131. Rasmussen, R. M., Levizzani, V., and Pruppacher, H. R. (1982) A theoretical and wind tunnel study of the melting behavior of small and large ice particles, Preprint, Conf. on Cloud Physics, Chicago, Illinois, 13-16-Nov. 1982, pp 388-391. (1)
132. Ryde, J. (1946) The attenuation of radar echoes produced at centimetre wavelengths by various meteorological phenomena, Report of Conf. on Met. Factors in Radio Wave Propagation, London, England, pp 169-189. (1)
133. Sassen, K. (1975) Laser depolarization 'bright band' from melting snowflakes, Nature, 255:316-318. (2)
134. Sassen, K. (1976) Polarization diversity lidar returns from virga and precipitation: Anomalies and the bright band analogy, J. Appl. Meteorol. 15:292-300. (3)
135. Sassen, K. (1978) A comparison of the microwave and laser radar bright band from melting hydrometeors, 18th Conf. on Radar Meteorology, Atlanta, Georgia, pp 112-116. (2)
136. Savage, R. C. (1982) Melting of Natural Ice Crystals in a Vertical Wind Tunnel, M.S. Thesis, University of Utah. (1)
137. Schotland, R., Sasson, K., and Stone, R. (1971) Observations by lidar of linear depolarization rates for hydrometeors, J. Appl. Meteorol. 10:1011-1017. (3)
138. Schaller, R. C., Cohen, I. D., Barnes, A. A., and Gibbons, L. C. (1982) A Survey of Melting Layer Research, AFGI-TR-82-0007, AD A115224. (1)

139. Sekhon, R., and Srivastava, R. (1970) Snow size spectra and radar reflectivity, J. Atmos. Sci. 27:299-307. (1)
140. Stewart, R. E. (1982) Deep 0° C isothermal layers within precipitation bands, Preprint, Conf. on Cloud Physics, Chicago, Illinois, 13-16 Nov 1982, pp 570-571. (2)
141. Stewart, R. E., and Marwitz, J. O. (1980) Cloud Physics Studies in SCPP During 1979-1980, Report No. AS125, Dept. of Atmospheric Science, University of Wyoming, Laramie, Wyoming. (1)
142. Stewart, R. E., Marwitz, J. D., and Pace, J. (1983) The melting layer of stratiform clouds, J. Atmos. Sci., to be published in 1983. (1)
143. Takeda, T., and Fujiyoshi, Y. (1978) Microphysical processes around the melting layer in precipitating clouds as observed by vertical pointing radar, J. Meteorol. Soc. Japan, 56:293-303. (1)
144. Vonnegut, B., and Moore, C. (1960) Visual analogue of radar bright band phenomenon, Weather, 15:272-279. (3)
145. Weiss, R., Locatelli, J., and Hobbs, P. (1977) Deduction of ice particle types in the vicinity of the melting layer from Doppler radar measurements, J. Appl. Meteorol. 16:314-316. (1)
146. Wexler, R. (1955a) An evaluation of the physical effects in the melting layer, Proc. Fifth Weather Radar Conf., Ft. Monmouth, New Jersey, pp 329-334. (1)
147. Wexler, R. (1955b) The melting layer, Proc. First Conf. on Physics of Clouds and Precipitation Particles, pp 306-314. (1)
148. Wexler, R., and Atlas, D. (1956) Factors influencing radar-echo intensities in the melting layer, Quart. J. Roy. Meteorol. Soc. 82:349-351. (1)
149. Wexler, R., and Atlas, D. (1958) Moisture supply and growth of stratiform precipitation, J. Meteorol. 15:531. (2)
150. Wexler, R., Reed, J. R., and Honig, J. (1954) Atmospheric cooling by melting snow, Bulletin of the Amer. Meteorol. Soc. 35:48-51. (2)
151. Woo, S., and Hamielac, E. E. (1971) A numerical method of determining the rate of evaporation of small drops falling at terminal velocity in air, J. Atmos. Sci. 28:1448-1454. (4)
152. Yokoyama, T., and Tanaka, H. (1980) Effects of coalescence in a melting layer in two-wavelength microwave backscattering, Proceedings VIII Int. Conf. on Cloud Physics, Clermont-Ferrand, France, pp 235-237. (1)
153. Zikmunda, J., and Vali, G. (1972) Fall patterns and fall velocities of rimed ice crystals, J. Atmos. Sci. 29:1334-1347. (2)
154. Zwack, P., and Anderson, C. (1970) Showers and continuous precipitation, Proc. 14th Radar Meteorology Conf., Tucson, Arizona, pp 335-338. (2)