

AD-A137 776

RESEARCH IN ALGEBRAIC MANIPULATION(U) MASSACHUSETTS
INST OF TECH CAMBRIDGE LAB FOR COMPUTER SCIENCE
J MOSES 14 DEC 83 AFOSR-TR-84-0037 AFOSR-80-0250

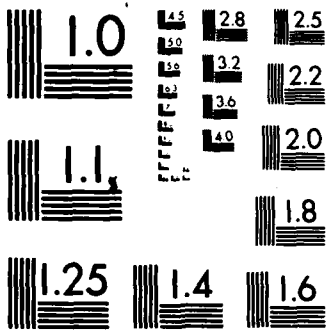
1/1

UNCLASSIFIED

F/G 12/1

NL





MICROCOPY RESOLUTION TEST CHART
 NATIONAL BUREAU OF STANDARDS-1963-A

2

REPORT DOCUMENTATION PAGE

WJAI3776

DTIC FILE COPY

1a. REPORT SECURITY CLASSIFICATION UNCLASSIFIED		1b. RESTRICTIVE MARKINGS	
2a. SECURITY CLASSIFICATION AUTHORITY		3. DISTRIBUTION/AVAILABILITY OF REPORT Approved for public release; distribution unlimited.	
2b. DECLASSIFICATION/DOWNGRADING SCHEDULE		5. MONITORING ORGANIZATION REPORT NUMBER(S) AFOSR-TR- 7	
4. PERFORMING ORGANIZATION REPORT NUMBER(S)		7a. NAME OF MONITORING ORGANIZATION Air Force Office of Scientific Research	
6a. NAME OF PERFORMING ORGANIZATION Massachusetts Institute of Technology	5b. OFFICE SYMBOL (If applicable)	7b. ADDRESS (City, State and ZIP Code) Directorate of Mathematical & Information Sciences, Bolling AFB DC 20332	
6c. ADDRESS (City, State and ZIP Code) Laboratory for Computer Science, 545 Technology Square, Cambridge MA 02139		9. PROCUREMENT INSTRUMENT IDENTIFICATION NUMBER AFOSR-80-0250	
8a. NAME OF FUNDING/SPONSORING ORGANIZATION AFOSR	8b. OFFICE SYMBOL (If applicable) NM	10. SOURCE OF FUNDING NOS.	
8c. ADDRESS (City, State and ZIP Code) Bolling AFB DC 20332		PROGRAM ELEMENT NO. 61102F	TASK NO. A4
11. TITLE (Include Security Classifications) RESEARCH IN ALGEBRAIC MANIPULATION, 1 JUL 82-30 JUN 83		PROJECT NO. 2304	WORK UNIT NO.
12. PERSONAL AUTHOR(S) Joel Moses			
13a. TYPE OF REPORT Interim	13b. TIME COVERED FROM 1/7/82 TO 30/6/83	14. DATE OF REPORT (Yr., Mo., Day) 14 DEC 83	15. PAGE COUNT 9
16. SUPPLEMENTARY NOTATION			
17. COSATI CODES		18. SUBJECT TERMS (Continue on reverse if necessary and identify by block number)	
FIELD	GROUP	SUB. GR.	
19. ABSTRACT (Continue on reverse if necessary and identify by block number)			
<p>Professor Shunro Watanabe of Japan has been visiting the group since March 1982. In the past year he has been able, with the support of the group, to develop a major new program for solving in closed form a wide variety of ordinary differential equations.</p> <p>The MACSYMA system uses two large packages for solving ODEs. The first package was written by Jeffrey Golden of the group. It solves equations by using a few well known techniques (e.g., separation of variables). It is quite weak in dealing with second order equations, such as hypergeometric functions. The second package, due to Ed Lafferty of the MITRE Corporation, incorporates many more techniques, but is still not a very general solver of ODEs.</p> <p>Professor Watanabe's approach is to convert most second order ODEs into (CONTINUED)</p>			
20. DISTRIBUTION/AVAILABILITY OF ABSTRACT UNCLASSIFIED/UNLIMITED <input checked="" type="checkbox"/> SAME AS RPT <input checked="" type="checkbox"/> DTIC USERS <input type="checkbox"/>		21. ABSTRACT SECURITY CLASSIFICATION UNCLASSIFIED	
22a. NAME OF RESPONSIBLE INDIVIDUAL Dr. Robert N. Buchal		22b. TELEPHONE NUMBER (Include Area Code) (00) 767-4939	22c. OFFICE SYMBOL H

DTIC
ELECTE
FEB 13 1984
S E

ITEM #19, ABSTRACT, CONTINUED: instances of the so-called P-function. These functions, originally due to Riemann, have been extensively studied by the Japanese mathematician Fukuhara (also spelled Hukuhara). For the past year, Watanabe has implemented a package that transforms a large class of equations into P-functions. He has used Kame's table as a test bed.

Accession For	
NTIS GRA&I	<input checked="" type="checkbox"/>
DTIC TAB	<input type="checkbox"/>
Unannounced	<input type="checkbox"/>
Justification	
By _____	
Distribution/	
Availability Codes	
Dist	Avail and/or Special
A-1	



↓
Professor Shunro Watanabe of Japan has been visiting our group since March, 1982. In the past year he has been able, with the support of our group, to develop a major new program for solving in closed form a wide variety of ordinary differential equations.

↓
The MACSYMA system uses two large packages for solving ODEs. The first package was written by Jeffrey Golden of our group. It solves equations by using a few well known techniques (e.g., separation of variables). It is quite weak in dealing with second order equations, such as hypergeometric functions. The second package, due to Ed Lafferty of the MITRE Corporation, incorporates many more techniques, but is still not a very general solver of ODEs.

↓
Professor Watanabe's approach is to convert most second order ODEs into instances of the so-called P-function. These functions, originally due to Riemann, have been extensively studied by the Japanese mathematician Fukuhara (also spelled Hukuhara). For the past year, Watanabe has implemented a package that transforms a large class of equations into P-functions. He has used Kamke's table as a test bed. Several examples from Kamke using this package, are given in Appendix I. ↗

A

(D2) [DSK, SWATAN]

(C3) showtime:true\$
Time= 5 msec.

(C4) loadfile(pmain.fasl);

PMAIN FASL DSK SWATAN being loaded
Loading done
Time= 411 msec.

Kamke example 378a

(D4) DONE

(C5) batch(examp1,2);

(C6) k378a:x*(x-1)*(x+1)^2*'diff(y,x,2)+2*x*(x+1)*(x-3)*'diff(y,x)-2*(x-1)*y=0;
Time= 57 msec.

$$(D6) \quad (X - 1) X (X + 1) \frac{d^2 Y}{dX^2} + 2 (X - 3) X (X + 1) \frac{dY}{dX} - 2 (X - 1) Y = 0$$

(C7) lode2(k378a);

$$\text{we solve } \frac{d^2 Y}{dX^2} + \frac{(2X - 6)}{X - 1} \frac{dY}{dX} - \frac{2Y}{X^2 + 2X + X} = 0$$

SOLVE FASL DSK MACSYM being loaded
Loading done

PREMAP FASL DSK SWATAN being loaded
Loading done

$$\text{we use } Y = \frac{U}{(X + 1)^2}$$

$$\text{the result is } \frac{d^2 U}{dX^2} - \frac{2U}{X - 1} + \frac{dU}{dX} = 0$$

$$\text{we solve } \frac{d^2 Y}{dX^2} + \frac{2Y}{X - 1} + \frac{dY}{dX} = 0$$

PEQP1 FASL DSK SWATAN being loaded
Loading done

PHYPGM FASL DSK SWATAN being loaded
Loading done

AIR FORCE OFFICE OF
OPERATIONS
RESEARCH
AND
DEVELOPMENT
WRIGHT-PATTERSON AIR FORCE
BASE
DAYTON, OHIO 45433-6151
1985

(D2)

[DSK, SWATAN]

Kamke example 344

(C3) showtime:true\$
Time= 4 msec.

(C4) batch(examp1,7);

(C5) K344:X^4*'DIFF(Y,X,2)+(EXP(2/X)-V^2)*Y=0;
Time= 65 msec.

$$(D5) \quad X^4 \frac{d^2 Y}{dX^2} + (\%E^{2/X} - V^2) Y = 0$$

(C6) loadfile(pmain,fasl);

PMAIN FASL DSK SWATAN being loaded
Loading done
Time= 413 msec.

(D6) DONE

(C7) lode2(k344);

$$\text{we solve } \frac{d^2 Y}{dX^2} + \frac{(\%E^{2/X} - V^2) Y}{X^4} = 0$$

PIVTR FASL DSK SWATAN being loaded
Loading done

PTRINV FASL DSK SWATAN being loaded
Loading done

$$\text{we use } T = \frac{1}{X}$$

$$\text{the result is } \frac{d^2 Y}{dT^2} + \frac{dY}{dT} + (\%E^{2T} - V^2) Y = 0$$

$$\text{we solve } \frac{d^2 Y}{dX^2} + \frac{dY}{dX} + (\%E^{2X} - V^2) Y = 0$$

PIVTR2 FASL DSK SWATAN being loaded
Loading done

PTREXP FASL DSK SWATAN being loaded
Loading done

PDVTR FASL DSK SWATAN being loaded

the type is hypergeometric
the solution may be written by Riemann's P-functions as follows

$$y=P \begin{bmatrix} 0 & 1 & \text{INF} \\ 0 & 0 & -2 \\ 1 & 3 & -1 \end{bmatrix} (x)$$

PNOPM FASL DSK SWATAN being loaded

Loading done

we solve

$$y=P \begin{bmatrix} 0 & 1 & \text{INF} \\ 1 & 0 & -1 \\ 0 & 3 & -2 \end{bmatrix} (x)$$

$$y= (K2 \int \frac{(X-1)}{X^2} dX + K1) X$$

continue? type y or n

y:

SIN FASL DSK MACSYM being loaded

Loading done

SININT FASL DSK MACSYM being loaded

Loading done

SCHATC FASL DSK MACSYM being loaded

Loading done

Time= 21253 msec.

$$(D7) \quad - 2 K2 X \text{ LOG}(X) + K2 X^2 + K1 X - K2$$

Time= 23672 msec.

(D8)

BATCH DONE

(C9) closefile(buffer,save);

Loading done

SOLVE FASL DSK MACSYM being loaded

Loading done

U

we use $Y = \frac{U}{X}$

the result is $U \left(\frac{2}{X} - V \right) + \frac{dU}{dX} = 0$

we solve $\frac{dY}{dX} + \left(\frac{2}{X} - V \right) Y = 0$

we use $T = \frac{X}{Y}$

the result is $\frac{dT}{dT} + \frac{dY}{dT} - \frac{(V - T)^2}{T} Y = 0$

we solve $\frac{dY}{dX} + \frac{dY}{dX} + \frac{(X - V)^2}{X} Y = 0$

PCONFL FASL DSK SWATAN being loaded

Loading done

the equation is confluent type

PCNEQ0 FASL DSK SWATAN being loaded

Loading done

the solution may be representable by Fukuhara's P-function.

$$y = P \begin{bmatrix} \text{INF} & \text{INF} & 0 \\ - & 1 & - \\ - & 2 & - \\ \text{XI} & 1 & \\ - & - & V \\ 2 & 2 & V \end{bmatrix} (x)$$

PCFPTM FASL DSK SWATAN being loaded

Loading done

y = Y (X)

B. ABS(V)

Time = 15604 msec.

(D7)

Y (X)

B. ABS(V)

(D2)

[DSK. SWATAN]

(C3) showtime: true\$
Time= 5 msec.

(C4) batch(examp1,12);

Kamke example 406

(C5) k406:16*(x^3-1)^2*'DIFF(Y,X,2)+27*x*Y=0;
Time= 41 msec.

$$(D5) \quad 16 (X^3 - 1)^2 \frac{d^2 Y}{dX^2} + 27 X Y = 0$$

(C6) k406t:48*x^2*(x-1)^2*'diff(y,x,2)+32*x*(x-1)^2*'diff(y,x)+9*x*y=0;
Time= 50 msec.

$$(D6) \quad 48 (X - 1)^2 X^2 \frac{d^2 Y}{dX^2} + 32 (X - 1)^2 X \frac{dY}{dX} + 9 X Y = 0$$

(C7) loadfile(pmain.,fasl);

PMAIN FASL DSK SWATAN being loaded
Loading done
Time= 426 msec.

(D7) DONE

(C8) lode2(k406t);

$$\text{we solve } \frac{d^2 Y}{dX^2} + \frac{2}{3X} \frac{dY}{dX} + \frac{3Y}{16X^3 - 32X^2 + 16X} = 0$$

SOLVE FASL DSK MACSYM being loaded
Loading done

PHYPGM FASL DSK SWATAN being loaded
Loading done

the type is hypergeometric
the solution may be written by Riemann's P-functions as follows

$$y = P \begin{bmatrix} 0 & 1 & \text{INF} \\ 1 & 3 & 1 \\ - & - & - \\ 3 & 4 & 3 \\ 1 \\ 0 & - & 0 \\ 4 \end{bmatrix} (x)$$

PHGHP FASL DSK SWATAN being loaded
Loading done

PALGS FASL DSK SWATAN being loaded

Loading done

we solve

$$y = (X - 1)^{1/4} P \begin{bmatrix} 0 & 1 & INF \\ 1 & 1 & 1 \\ - & - & - \\ 3 & 2 & 12 \\ 0 & 0 & 1 \\ 0 & 0 & - \\ & & 4 \end{bmatrix} (x)$$

PALG4 FASL DSK SWATAN being loaded

Loading done

POH48 FASL DSK SWATAN being loaded

Loading done

$$y = \frac{K1 T^{1/4} (2 \sqrt{T^2 + T + 1}) + \sqrt{3} (T + 1)^{1/4} (X - 1)^{1/4}}{(T - 1)^{3/12}} + \frac{K2 T^{1/4} (\sqrt{3} (T + 1) - 2 \sqrt{T^2 + T + 1}) (X - 1)^{1/4}}{(T - 1)^{3/12}}$$

where t=x^(1/3)

Time= 13449 msec.

$$(D8) \quad y = \frac{K1 T^{1/4} (2 \sqrt{T^2 + T + 1}) + \sqrt{3} (T + 1)^{1/4} (X - 1)^{1/4}}{(T - 1)^{3/12}} + \frac{K2 T^{1/4} (\sqrt{3} (T + 1) - 2 \sqrt{T^2 + T + 1}) (X - 1)^{1/4}}{(T - 1)^{3/12}}$$

Time= 15278 msec.

(D9)

BATCH DONE

(C10) closefile(buffer,save);

(D2)

[DSK, SWATAN]

(C3) showtime:true\$
Time= 5 msec.

Kanke example 180

(C4) batch(exampl,13);

(C5) K180:X^2*'DIFF(Y,X,2)+3*X*'DIFF(Y,X,1)+(X^2+1-V^2)*Y=F(X);
Time= 47 msec.

$$(D5) \quad X^2 \frac{d^2 Y}{dX^2} + 3X \frac{dY}{dX} + (X^2 - V^2 + 1) Y = F(X)$$

(C6) loadfile(pmain,fasl);

PMAIN FASL DSK SWATAN being loaded
Loading done
Time= 413 msec.

(D6) DONE

(C7) lode2(k180);

$$\text{we solve } \frac{d^2 Y}{dX^2} + \frac{3}{X} \frac{dY}{dX} + \frac{(X^2 - V^2 + 1) Y}{X^2} = \frac{F(X)}{X^2}$$

$$\text{first we solve } \frac{d^2 Y}{dX^2} + \frac{3}{X} \frac{dY}{dX} + \frac{(X^2 - V^2 + 1) Y}{X^2} = 0$$

SOLVE FASL DSK MACSYM being loaded
Loading done

PCONFL FASL DSK SWATAN being loaded
Loading done
the equation is confluent type

PCNEQ0 FASL DSK SWATAN being loaded
Loading done

the solution may be representable by Fukuvara's P-function.

$$y=P \begin{bmatrix} \text{INF} & \text{INF} & 0 \\ -XI & 3 & -V-1 \\ 2 \\ XI & 3 & V-1 \\ 2 \end{bmatrix} (x)$$

PCFPTM FASL DSK SWATAN being loaded

Loading done

$$y = \frac{Y \quad (X)}{B. \text{ ABS}(V) X}$$

the solution of the homog. eq. is $\frac{Y \quad (X)}{B. \text{ ABS}(V) X}$

PNONH FASL DSK SWATAN being loaded

Loading done

a special sol. for the nonhom. eq. is

$$\frac{X}{\int \left[\int (\%PI F(T) J \quad (T) Y \quad (X) - \%PI F(T) Y \quad (T) J \quad (X)) dT \right] dT}$$

2 X

continue? type y or n

n;

Time= 9943 msec.

$$\frac{X}{\int \left[\int (\%PI F(T) J \quad (T) Y \quad (X) - \%PI F(T) Y \quad (T) J \quad (X)) dT \right] dT}$$

(D7)

2 X

$$+ \frac{Y \quad (X)}{B. \text{ ABS}(V) X}$$

Time= 12131 msec.

(D8)

BATCH DONE

(C9) closefile(buffer,save);

END

FILMED

3-84

DTIC