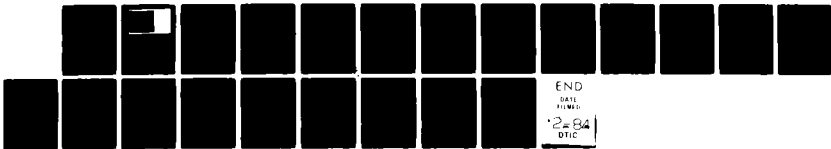
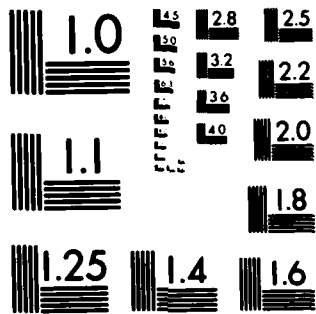


AD-A136 351 COMBINED TENSION-TORSION OF A CYLINDRICAL MIXTURE OF AN ELASTIC SOLID AND... (U) WISCONSIN UNIV-MADISON 1/1

UNCLASSIFIED MRC-TSR-2587 DAAG29-80-C-0041 MATHEMATICS RESEARCH CENTER M GANDHI ET AL. OCT 83 F/G 20/11 NL





MICROCOPY RESOLUTION TEST CHART
NATIONAL BUREAU OF STANDARDS 1963 A

2

A136351

MRC Technical Summary Report #2587

COMBINED TENSION-TORSION OF
A CYLINDRICAL MIXTURE OF AN
ELASTIC SOLID AND FLUID

Mukesh Gandhi, K. R. Rajaopai
and A. S. Wineman

**Mathematics Research Center
University of Wisconsin—Madison
610 Walnut Street
Madison, Wisconsin 53705**

October 1983

(Received September 15, 1983)

DTIC FILE COPY

**Approved for public release
Distribution unlimited**

**DTIC
ELECTE
DEC 27 1983
E**

Sponsored by
U. S. Army Research Office
P. O. Box 12211
Research Triangle Park
North Carolina 27709

83 12 27 068

UNIVERSITY OF WISCONSIN-MADISON
MATHEMATICS RESEARCH CENTER

COMBINED TENSION-TORSION OF A CYLINDRICAL
MIXTURE OF AN ELASTIC SOLID AND FLUID

Mukesh Gandhi*, K. R. Rajagopal† and A. S. Wineman*

Technical Summary Report #2587
October 1983

ABSTRACT

In his study of combined finite extension and torsion of a nonlinearly elastic cylinder, Rivlin [1] established a relation for the torsional stiffness which depends only on the axial force, the axial extension ratio and the radius of the undeformed cylinder, in the case of small twist. The relationship did not depend on the structure of the stored energy function and is hence termed a "Universal Relation." In this paper, we extend Rivlin's [1] result to the case of combined extension and torsion of a cylindrical mixture of a nonlinearly elastic solid and fluid.

AMS (MOS) Subject Classification: 73C99

Key Words: Universal relation, torsion, finite extension, stored energy function, saturation

Work Unit Number 6 (Miscellaneous Topics)

*Department of Mechanical Engineering and Applied Mechanics,
University of Michigan, Ann Arbor, MI 48109

†Department of Mechanical Engineering, University of Pittsburgh,
Pittsburgh, PA 15261

Sponsored by the United States Army under Contract No. DAAG29-80-C-0041.

SIGNIFICANCE AND EXPLANATION

In the case of the combined finite extension followed by a small twist of a nonlinearly elastic cylinder, the torsional stiffness depends only on the axial force, the axial extension ratio and the radius of the undeformed cylinder; the stiffness being independent of the specific form of the stored energy function which characterizes the nonlinearly elastic material. It is found that the torsional stiffness possesses a similar property in the case of a cylindrical mixture of a nonlinearly elastic solid and fluid.

Accession For	
NTIS GRA&I	<input checked="" type="checkbox"/>
DTIC TAB	<input type="checkbox"/>
Unannounced	<input type="checkbox"/>
Justification _____	
By _____	
Distribution/ _____	
Availability Codes	
Dist	Avail and/or Special
A-1	



The responsibility for the wording and views expressed in this descriptive summary lies with MRC, and not with the authors of this report.

COMBINED TENSION-TORSION OF A CYLINDRICAL
MIXTURE OF AN ELASTIC SOLID AND FLUID

Mukesh Gandhi*, K. R. Rajagopal† and A. S. Wineman*

INTRODUCTION

In his study of the combined finite extension and torsion of a circular cylinder of a nonlinear elastic incompressible, isotropic material, Rivlin [1] established a striking result in the case of small twist. He exhibited a relation for the torsional stiffness (twisting moment per angle of twist) which depends only on the axial force, the axial extension ratio and the radius of the undeformed cylinder, and does not depend on the mathematical structure of the stored energy function of the nonlinearly elastic material. This relation has been termed a "Universal Relation" because it is the same for all nonlinearly elastic incompressible, isotropic materials. In this paper we extend Rivlin's result to the case of combined extension and torsion of a cylindrical mixture of a nonlinearly elastic solid and fluid.

The first treatment of the problem of combined extension and torsion of a rubber cylinder containing fluid appears to be due to Treloar [2]. In his analysis, the cylinder is assumed to be saturated with the fluid. In addition, the problem is not treated within the context of mixture theory. The present work differs from Treloar's [2] in two respects. First, the problem is studied within the context of the theory of interacting continua. Second, there is no restriction on the fluid content of the mixture, the state of the cylinder could range from being completely dry to fully saturated.

*Department of Mechanical Engineering and Applied Mechanics,
University of Michigan, Ann Arbor, MI 48109

†Department of Mechanical Engineering, University of Pittsburgh,
Pittsburgh, PA 15261

In the present problem, both the solid and fluid constituents are at rest. However, the fluid can be non-homogeneously dispersed throughout the mixture region, which gives rise to concentration gradients. The physical mechanism for the existence of such gradients is provided by the presence of a diffusive body force which each constituent exerts on the other. However, when the twisting is small, it is found that the fluid is dispersed uniformly throughout the mixture.

A brief review of the notations and basic equations relevant to a mixture of interacting continua is provided in section 2. The general problem of torsion superposed on finite extension is formulated and discussed within the context of mixture theory, in section 3. The problem of a "small" twist superposed on a finite extension is studied in detail in the final section.

2. PRELIMINARIES

In this section, we provide a brief discussion of the basic balance laws and their consequences which is pertinent to mixture theory. A detailed exposition of the same can be found in Bowen [3] and Atkin and Crane [4].

A mixture of two continua, a solid S_1 and a fluid S_2 , which are in motion relative to one another is considered. Let

$$\underline{x} = \chi_1(\underline{X}, t) \quad \text{and} \quad \underline{y} = \chi_2(\underline{Y}, t) \quad (1)_{1,2}$$

denote the motion of the solid and fluid, respectively. Also, let \underline{u} , \underline{f} and \underline{v} , \underline{g} denote the velocity and acceleration vectors of S_1 and S_2 , respectively.

The deformation gradient tensor for the solid S_1 is given by

$$\underline{F} = \frac{\partial \chi_1}{\partial \underline{X}}. \quad (2)$$

Let ρ_1 and ρ_2 denote the densities of S_1 and S_2 at time t , measured per unit volume of the mixture. The mean velocity of the mixture and the total density of the mixture are then defined by

$$\rho \underline{v} = \rho_1 \underline{u} + \rho_2 \underline{v}, \quad \rho = \rho_1 + \rho_2. \quad (3)_{1,2}$$

The appropriate form for the balance of mass for the solid and fluid are

$$\rho_1 \det \underline{F} = \rho_{10}, \quad (4)$$

$$\frac{\partial \rho_2}{\partial t} + \operatorname{div} (\rho_2 \underline{v}) = 0, \quad (5)$$

where ρ_{10} is the mass density of the solid before forming the mixture.

Let \underline{g} and $\underline{\pi}$ denote the partial stress tensors for S_1 and S_2 , respectively. Let \underline{b} denote the diffusive body force. In the absence of external body forces, the equations of motion for S_1 and S_2 are

$$\operatorname{div} \underline{g} - \underline{b} = \rho_1 \underline{f}, \quad (6)$$

$$\operatorname{div} \underline{\pi} + \underline{b} = \rho_2 \underline{g}, \quad (7)$$

and

$$\underline{g} + \underline{\pi} = \underline{g}^T + \underline{\pi}^T. \quad (8)$$

Finally, we discuss briefly the constraint which is introduced on the motion of the mixture in virtue of the assumption that both the solid S_1 and the fluid S_2 are incompressible in their unmixed reference configuration. If the solid S_1 and the fluid S_2 have constant densities ρ_{10} and ρ_{20} and volume V_1 and V_2 , respectively, in their reference configuration and if one further assumes that the volume of the mixture is always constrained to be $V_1 + V_2$, then (cf. Mills [5]), it can be shown that

$$\frac{\rho_1}{\rho_{10}} + \frac{\rho_2}{\rho_{20}} = 1. \quad (9)$$

We shall assume that the mixture under consideration obeys the constraint expressed by (9).

3. PROBLEM

Let us consider a solid circular cylinder whose dimensions in the reference configuration are given by a radius R_0 and a length L_0 . We shall denote the co-ordinates of a material particle in the reference configuration in a cylindrical co-ordinate system denoted by (R, θ, Z) . We shall assume that the cylinder is subject to the following deformation

$$r = r(R), \quad (10)_1$$

$$\theta = \theta + \psi \lambda Z, \quad (10)_2$$

and

$$z = \lambda Z, \quad (10)_3$$

where $(r, \theta z)$ denote the co-ordinates of the particle at (R, θ, Z) at the current instant, λ and ψ being constants. The above deformation corresponds to a finite elongation (with an associated stretch ratio λ) along the z-co-ordinate direction, followed by a rotation of ψ per unit current length.

The Cauchy-Green strain tensor \underline{B} which is defined as

$$\underline{B} = \underline{F} \underline{F}^T \quad (11)$$

takes the following form for the above deformation:

$$\underline{B} = \begin{pmatrix} \left(\frac{dr}{dR}\right)^2 & 0 & 0 \\ 0 & \left(\frac{r}{R}\right)^2 + (\psi \lambda r)^2 & \psi \lambda^2 r \\ 0 & \psi \lambda^2 r & \lambda^2 \end{pmatrix}, \quad (12)$$

$$= \begin{pmatrix} \lambda_r^2 & 0 & 0 \\ 0 & \lambda_\theta^2 + (\psi R \lambda \lambda_\theta)^2 & \psi \lambda^2 \lambda_\theta R \\ 0 & \psi \lambda^2 \lambda_\theta R & \lambda^2 \end{pmatrix}, \quad (13)$$

where

$$\lambda_r = \frac{dr}{dR} \quad \text{and} \quad \lambda_\theta = \frac{r}{R}$$

denote the stretch ratios in the r and θ directions, respectively. The principal invariants of \underline{B} are then given as

$$I_1 = \lambda_r^2 + \lambda_\theta^2(1 + \psi^2 R^2 \lambda^2) + \lambda^2, \quad (14)$$

$$I_2 = \lambda^2(\lambda_r^2 + \lambda_\theta^2) + \lambda_\theta^2 \lambda_r^2(1 + \psi^2 R^2 \lambda^2), \quad (15)$$

$$I_3 = \lambda_r^2 \lambda_\theta^2 \lambda^2. \quad (16)$$

We shall find it useful to express the balance of mass equation (for the solid constituent) in terms of the stretch ratios. Thus (4) can be expressed as

$$\frac{\rho_1}{\rho_{10}} = \frac{1}{\lambda_r \lambda_\theta \lambda} = v_s, \quad (17)$$

where v_s represents the volume fraction of the solid.

We now proceed to document the equations of equilibrium which are appropriate for the deformation being considered. Since the assumed form of deformation implies that the stresses depend only on the r co-ordinate, the equations of equilibrium for the solid constituent, namely (4), reduces to

$$\frac{d\sigma_{rr}}{dr} + \frac{\sigma_{rr} - \sigma_{\theta\theta}}{r} - b_r = 0, \quad (18)$$

where σ_{rr} and $\sigma_{\theta\theta}$ denote the appropriate components of $\underline{\sigma}$ and b_r the component of the diffusive body force \underline{b} in the radial direction. The equilibrium equation for the fluid constituent, namely (5), reduces to

$$\frac{d\pi_{rr}}{dr} + \frac{\pi_{rr} - \pi_{\theta\theta}}{r} + b_r = 0, \quad (19)$$

where π_{rr} and $\pi_{\theta\theta}$ denote the components of $\underline{\pi}$. If \underline{T} denotes the total stress tensor, i.e.,

$$\underline{T} = \underline{\sigma} + \underline{\pi},$$

then (18) and (19) imply that

$$\frac{dT_{rr}}{dr} + \frac{T_{rr} - T_{\theta\theta}}{r} = 0, \quad (20)$$

which is the equation of equilibrium for the mixture.

We shall assume that the solid-fluid mixture is such that its specific Helmholtz free energy function has the following constitutive structure (cf. [5])

$$A = \tilde{A}(\underline{E}, \rho_2).$$

Under the assumption of isotropy and material frame indifference, the free energy function A can be written in terms of an integrity basis for \underline{B} as

$$A = \bar{A}(I_1, I_2, I_3, \rho_2). \quad (21).$$

It follows from equations (4), (9) and (16) that

$$(I_3)^{-\frac{1}{3}} = 1 - \frac{\rho_2}{\rho_{20}},$$

and thus A reduces to

$$A = A(I_1, I_2, \rho_2). \quad (22)$$

The above constitutive assumption seems to be an appropriate one for a mixture of a non-linearly elastic material like rubber in a solvent (cf. Treloar [7]). The restrictions imposed by thermodynamics and the reductions which can be achieved for the forms of the constitutive relations for the stresses have been studied in detail in [6]. We provide below the results obtained therein.

The constitutive relation involving the partial stress components for the solid and fluid constituents are given respectively, by

$$\sigma_{ij} = (\beta - p \frac{\rho_1}{\rho_{10}}) \delta_{ij} + 2\rho \{ (A_1 + A_2 I_1) B_{ij} - A_2 B_{ik} B_{kj} \} \quad (23)$$

and

$$\pi_{ij} = (-\beta - p \frac{\rho_2}{\rho_{20}} - \rho \rho_2 \frac{\partial A}{\partial \rho_2}) \delta_{ij}. \quad (24)$$

The constitutive relation for the components of the diffusive body force is given by

$$b_i = \frac{\partial \emptyset}{\partial x_i} - \frac{p}{\rho_{10}} \frac{\partial \rho_1}{\partial x_i} + \rho \frac{\partial A}{\partial \rho_2} \frac{\partial \rho_2}{\partial x_i} - \rho_2 \{ (A_1 + A_2 I_1) \delta_{ik} - A_2 B_{ik} \} \frac{\partial B_{ik}}{\partial x_i}, \quad (25)$$

where δ_{ij} denotes the kronecker delta and A_i , $i=1,2$ is defined through

$$A_i = \frac{\partial A}{\partial I_i}, \quad i=1,2. \quad (26)$$

The scalar p is due to the constraint of volume additivity. The scalar \emptyset was introduced into the theory by Green and Naghdi [8] for thermodynamic considerations. As can be seen from equation (6), (7) and (8) \emptyset drops out of the field equations. It is only of interest if partial stresses are to be calculated. Since this is not of interest in the present problem, we drop reference to it without loss of generality. Finally, the constitutive relation for the total stress takes the form

$$\begin{aligned} T_{ij} &= \pi_{ij} + \sigma_{ij} \\ &= (-p + \rho \rho_2 \frac{\partial A}{\partial \rho_2}) \delta_{ij} + 2\rho \{ (A_1 + A_2 I_1) B_{ij} - A_2 B_{ik} B_{kj} \} \end{aligned} \quad (27)$$

For the deformation under consideration, it follows from (13) and equations (25)-(27) that

$$\sigma_{rr} = - \left(p \frac{\rho_1}{\rho_{10}} \right) + 2\rho (A_1 + A_2 I_1) \lambda_r^2 - 2\rho (A_2) \lambda_r^4, \quad (28)$$

$$\begin{aligned} \sigma_{\theta\theta} &= - \left(p \frac{\rho_1}{\rho_{10}} \right) + 2\rho (A_1 + A_2 I_1) \lambda_\theta^2 (1 + \psi^2 R^2 \lambda_\theta^2) \\ &\quad - 2\rho A_2 \{ \lambda_\theta^4 (1 + \psi^2 R^2 \lambda_\theta^2)^2 + \psi^2 R^2 \lambda_\theta^4 \lambda_\theta^4 \}, \end{aligned} \quad (29)$$

$$\begin{aligned} \sigma_{zz} &= - \left(p \frac{\rho_1}{\rho_{10}} \right) + 2\rho (A_1 + A_2 I_1) \lambda^2 \\ &\quad - 2\rho A_2 \{ \lambda^4 (1 + \psi^2 R^2 \lambda_\theta^2) \}, \end{aligned} \quad (30)$$

$$\begin{aligned}\sigma_{\theta z} &= 2\rho(A_1 + A_2 I_1)\psi R \lambda_\theta \lambda^2 - 2\rho A_2 \{\psi R \lambda_\theta \lambda^2 [(1 + \psi^2 R^2 \lambda^2)\lambda_\theta^2 + \lambda^2]\} \\ &= 2\rho\psi R \{(A_1 + A_2 I_1)\lambda^2 \lambda_\theta - A_2 [\lambda^2 \lambda_\theta ((1 + \psi^2 R^2 \lambda^2) + \lambda^2)]\},\end{aligned}\quad (31)$$

$$\pi_{rr} = \pi_{\theta\theta} = \pi_{zz} = - \left(p \frac{\rho_2}{\rho_{20}} - \rho \rho_2 \frac{\partial A}{\partial \rho_2} \right). \quad (32)$$

The expression for the diffusive body force is quite complicated and for the purposes of our analysis here it is sufficient to realize that the diffusive body force takes the following form:

$$b_r = - p \frac{d}{dr} \left(\frac{\rho_1}{\rho_{10}} \right) + g(\lambda_r, \lambda_\theta, R, \lambda_r', \lambda_\theta', \lambda, \psi^2 R^2), \quad (33)$$

where the prime denotes differentiation with respect to the variable R .

It follows from equations (14)-(16) and (28)-(31) that the components of the stress \underline{g} have the following form

$$\sigma_{ii} = - \frac{\rho_1}{\rho_{10}} p + f_{ii}(\lambda_r, \lambda_\theta, \lambda, \psi^2 R^2), \text{ no sum on } i, \quad (34)$$

and

$$\sigma_{\theta z} = \psi R f_{\theta z}(\lambda_r, \lambda_\theta, \lambda, \psi^2 R^2). \quad (35)$$

Also, the components of the total stress for the mixture \underline{T} have the following form

$$T_{ii} = - p + h_{ii}(\lambda_r, \lambda_\theta, \lambda, \psi^2 R^2), \text{ no sum on } i, \quad (36)$$

and

$$T_{\theta z} = \psi R h_{\theta z}(\lambda_r, \lambda_\theta, \lambda, \psi^2 R^2). \quad (37)$$

The equilibrium equation for the solid (18) can then be re-written in the form

$$\begin{aligned}\frac{d}{dr} \left\{ - \frac{\rho_1}{\rho_{10}} p + f_{rr} \right\} + \frac{(f_{rr} - f_{\theta\theta})}{(r/R)} R + p \frac{d}{dr} \left(\frac{\rho_1}{\rho_{10}} \right) \\ - g(\lambda_r, \lambda_\theta, R, \lambda_r', \lambda_\theta', \lambda, \psi^2 R^2) = 0.\end{aligned}\quad (38)$$

Thus

$$-\frac{dp}{dR} \frac{\rho_1}{\rho_{10}} + g_1(\lambda_r, \lambda_\theta, R, \lambda'_r, \lambda'_\theta, \lambda, \psi^2 R^2) = 0. \quad (39)$$

The equation governing the equilibrium of the mixture takes the form

$$\frac{dp}{dr} = \frac{dh_{rr}}{dr} + \frac{h_{rr} - h_{\theta\theta}}{r}, \quad (40)$$

which is of the form

$$\frac{dp}{dR} + g_2(\lambda_r, \lambda_\theta, R, \lambda'_r, \lambda'_\theta, \lambda, \psi^2 R^2) = 0. \quad (41)$$

Equations (39) and (41) are two highly non-linear second order ordinary differential equations for $r(R)$ and $p(R)$. One boundary condition arises from the assumption that the lateral surface of the deformed cylinder is traction free. This requires that the radial component of the total stress vanishes, e.g. $T_{rr}(R_0) = 0$. The choice of a second boundary condition is unclear. For example, there is almost no physical guidance for specifying boundary conditions on the partial stress components. However, for the purposes of this work, which is the determination of a "Universal relation", the boundary condition that $T_{rr}(R_0) = 0$, is adequate.

Once $r(R)$ and $p(R)$ have been found, the partial and total stress components can be determined. Thus, the twisting moment M_z and the axial force F are given by the formulae

$$M_z = 2\pi \int_0^{r_0} r^2 T_{\theta z} dr = 2\pi\psi \int_0^{r_0} R r^2 h_{\theta z} dr, \quad (42)$$

and

$$F = 2\pi \int_0^{r_0} T_{zz} r dr = 2\pi \int_0^{r_0} r(-p + h_{zz}) dr, \quad (43)$$

where r_0 is the outer radius of the cylinder in the deformed swollen state.

Since the extent of swelling is not known and thus r_0 is not known a priori, it would be convenient to express the moment M_z and the axial force F in terms of integrals over the known reference configuration. Thus, we can express (42) and (43) as

$$M_z = 2\pi\psi \int_0^{R_0} \lambda_r \lambda_\theta^2 h_{\theta z} R^3 dR, \quad (44)$$

and

$$F = 2\pi \int_0^{R_0} \lambda_r \lambda_\theta (-p + h_{zz}) R dR. \quad (45)$$

4. SMALL TWIST SUPERPOSED ON FINITE EXTENSION

In this section we consider the case when a small twist is superposed on a finite extension. Thus we shall assume that $|\psi| \ll 1$ and that we can expand the relevant quantities in a Taylor series expansion in ψ . Note that in equations (39) and (41), g_1 and g_2 depend on ψ^2 . The solutions to (39) and (41) will be of the form

$$r = r(R, \psi^2), \quad p = p(R, \psi^2). \quad (46)_{1,2}$$

Thus we can express r and p by their Taylor series expansion as

$$r = \hat{r}(R) + O(\psi^2), \quad (47)$$

$$p = \hat{p}(R) + O(\psi^2). \quad (48)$$

Similarly one can expand λ_r and λ_θ in terms of a Taylor series expansion in ψ^2 and the Cauchy-Green strain tensor (13) now takes on the form

$$\begin{aligned} \tilde{B} &= \begin{pmatrix} \lambda_r^2 & 0 & 0 \\ 0 & \lambda_\theta^2 & \psi \lambda^2 \lambda_{\theta R} \\ 0 & \psi \lambda^2 \lambda_{\theta R} & \lambda^2 \end{pmatrix} + O(\psi^2) \\ &\equiv \hat{B} + O(\psi^2). \end{aligned} \quad (49)$$

where

$$\hat{\lambda}_r = \lambda_r(R, 0),$$

and

$$\hat{\lambda}_\theta = \lambda_\theta(R, 0).$$

Likewise, the principal invariants I_1 , I_2 and I_3 and the densities ρ_1 , ρ_2

and ρ can be expanded to be

$$\begin{aligned} I_1 &= \lambda_r^2 + \lambda_\theta^2 + \lambda^2 = \hat{\lambda}_r^2 + \hat{\lambda}_\theta^2 + \lambda^2 + O(\psi^2) \\ &\equiv \hat{I}_1 + O(\psi^2), \end{aligned} \quad (50)$$

$$\begin{aligned} I_2 &= \lambda_r^2 \lambda_\theta^2 + \lambda^2 \lambda_r^2 + \lambda^2 \lambda_\theta^2 = \hat{\lambda}_r^2 \hat{\lambda}_\theta^2 + \lambda^2 \hat{\lambda}_r^2 \\ &\quad + \lambda^2 \hat{\lambda}_\theta^2 + O(\psi^2) = \hat{I}_2 + O(\psi^2), \end{aligned} \quad (51)$$

$$I_3 = \lambda_r^2 \lambda_\theta^2 \lambda^2 = \hat{\lambda}_r^2 \hat{\lambda}_\theta^2 \lambda^2 + O(\psi^2) = \hat{I}_3 + O(\psi^2), \quad (52)$$

$$\rho_1 = \hat{\rho}_1 + O(\psi^2), \quad \rho_2 = \hat{\rho}_2 + O(\psi^2), \quad (53)_{1,2}$$

$$\rho = \hat{\rho} + O(\psi^2), \quad (53)_3$$

with

$$\frac{\hat{\rho}_1}{\rho_{10}} = \frac{1}{\lambda_r \lambda_\theta \lambda}, \quad \frac{\hat{\rho}_2}{\rho_{20}} = \left(1 - \frac{\hat{\rho}_1}{\rho_{20}}\right), \quad (54)_{1,2}$$

$$\hat{\rho} = \hat{\rho}_1 + \hat{\rho}_2. \quad (54)_3$$

Thus, the normal components of the partial and total stress may now be expressed as

$$\sigma_{ii} = -\frac{\hat{\rho}_1}{\rho_{10}} \hat{p} + \hat{f}_{ii}(\lambda_r, \lambda_\theta, \lambda) + O(\psi^2), \quad \text{no sum on } i, \quad (55)$$

$$T_{ii} = -\hat{p} + \hat{h}_{ii}(\lambda_r, \lambda_\theta, \lambda) + O(\psi^2), \quad \text{no sum on } i. \quad (56)$$

The diffusive body force \underline{b} may be expressed as

$$b_r = -\hat{p} \frac{d}{dR} \left(\frac{\hat{\rho}_1}{\rho_{10}}\right) \hat{\lambda}_r + \hat{g}(\lambda_r, \lambda_\theta, R, \lambda_r', \lambda_\theta', \lambda) + O(\psi^2). \quad (57)$$

The equilibrium equation for the solid and the mixture now take the form

$$-\frac{d\hat{p}}{dR} \frac{\hat{\rho}_1}{\rho_{10}} + \hat{g}_1(\lambda_r, \lambda_\theta, R, \lambda_r', \lambda_\theta', \lambda) + O(\psi^2) = 0, \quad (58)_1$$

$$\frac{d\hat{p}}{dR} + \hat{g}_2(\lambda_r, \lambda_\theta, R, \lambda_r', \lambda_\theta', \lambda) + O(\psi^2) = 0. \quad (58)_2$$

We now proceed to show that the equations (58)₁ and (58)₂ in which terms of $O(\psi^2)$ are ignored governs the basic finite uniaxial extension problem wherein the solution is homogeneous, i.e.,

$$\lambda_r = \text{constant}, \quad \lambda_\theta = \text{constant}.$$

Since we shall assume that the material is isotropic

$$\lambda_r = \lambda_\theta = \text{constant}. \quad (59)$$

It follows from (54) that the densities $\hat{\rho}_1$, $\hat{\rho}_2$ and $\hat{\rho}$ are constant. Moreover, it follows from the definitions of \hat{f}_{ii} and \hat{h}_{ii} that

$$\hat{f}_{ii} = \text{constant},$$

$$\hat{h}_{ii} = \text{constant},$$

and

$$\hat{f}_{rr} = \hat{f}_{\theta\theta} \text{ and } \hat{h}_{rr} = \hat{h}_{\theta\theta}.$$

The diffusive body force b vanishes since the gradients of the densities and strain tensor components in (25) now vanish. It follows from equations (38), (40), (58)₁ and (58)₂ and the definitions of the function g_1 and g_2 , that

$$\hat{g}_1 = 0, \tag{60}_1$$

$$\hat{g}_2 = 0, \tag{60}_2$$

and

$$\frac{d\hat{p}}{dR} = 0. \tag{60}_3$$

It then follows from (36), (60) and the boundary conditions on the lateral surface, $T_{rr} = 0$, that

$$\hat{h}_{rr}(\hat{\lambda}_r, \hat{\lambda}_\theta, \lambda) = \hat{p}(R) = \text{constant}. \tag{61}$$

Finally, from (13) and (59), the deformation is found to be

$$r = \hat{r}(R) = \hat{\lambda}R, \tag{62}$$

where

$$\hat{\lambda} = \hat{\lambda}_r = \hat{\lambda}_\theta \tag{63}$$

is a constant. In the absence of a second boundary condition, $\hat{\lambda}$ remains arbitrary. Hence, the equations (58)₁ and (58)₂ in which terms of $O(\psi^2)$ are ignored, governs the homogeneous finite uniaxial extension problem. Thus the general problem of combined uniaxial tension followed by small twist decouples into a uniaxial tension problem in which the deformation is homogeneous and a torsion problem in which the twisting is small.

We conclude our analysis by deriving a "universal relation" between the twisting moment and axial force under the assumption of small twist.

The expressions for the twisting moment M_z and axial force F in (42) and (43) become

$$M_z = 2\pi\psi \int_0^{R_0} \lambda_r \lambda_\theta^2 h_{\theta z}(\lambda_r, \lambda_\theta, \lambda, 0) R^3 dR + O(\psi^2), \quad (64)$$

and

$$F = 2\pi \int_0^{R_0} \lambda_r \lambda_\theta [-\hat{p}(R) + h_{zz}(\lambda_r, \lambda_\theta, \lambda, 0)] R dR + O(\psi^2). \quad (65)$$

It follows from (50)-(52), (61)-(66), and the deformations of λ_r , λ_θ , $h_{\theta z}$, h_{zz} and h_{rr} that

$$M_z = \{\pi R_0^4 \hat{p} \lambda^2 \lambda^4 (\hat{A}_1 + \hat{A}_2 \lambda^2)\} \psi + O(\psi^2), \quad (66)$$

and

$$F = 2\pi R_0^2 \lambda^2 \hat{p} (\hat{A}_1 + \hat{A}_2 \lambda^2) (\lambda^2 - \lambda^2) + O(\psi^2), \quad (67)$$

where

$$\hat{A}_i = \hat{A}_i(\hat{I}_1, \hat{I}_2, \hat{\beta}_2), \quad i = 1, 2$$

By (66) and (67),

$$\lim_{\psi \rightarrow 0} \frac{M_z/\psi}{F} = \frac{R_0^2}{2} \frac{\lambda^2 \lambda^2}{\lambda^2 - \lambda^2} \quad (68)$$

Equation (68) expresses a relationship between M_z and F which is independent of the particular form of the specific Helmholtz free energy A and can hence be called a "universal relation". It is valid for all states in which the elastic solid is swollen with fluid. In the absence of fluid, $\rho_2 = 0$, and thus by (9), (17), and (63), $\lambda \lambda^2 = 1$.

In this case, one obtains from (68) that

$$\lim_{\psi \rightarrow 0} \frac{M_z/\psi}{F} = \frac{R_0^2}{2} \left[\frac{\lambda^2}{\lambda^3 - 1} \right] \quad (69)$$

which is the classical expression established by Rivlin [1].

We provide below alternate forms for the "universal relation" (68) in terms of other parameters which are of physical interest:

Volume Fraction of the Solid

$$\lim_{\psi \rightarrow 0} \frac{M_z/\psi}{F} = \frac{R_0^2}{2} \frac{\lambda^2}{\lambda^3 v_s - 1}, \quad (70)$$

Solid Density

$$\lim_{\psi \rightarrow 0} \frac{M_z/\psi}{F} = \frac{R_0^2}{2} \frac{\lambda^2}{\lambda^3 \rho_1/\rho_{10} - 1}, \quad (71)$$

Fluid Density

$$\lim_{\psi \rightarrow 0} \frac{M_z/\psi}{F} = \frac{R_0^2}{2} \frac{\lambda^2}{\lambda^3 (1 - \frac{\rho_2}{\rho_{20}}) - 1}. \quad (72)$$

Note that if the cylinder undergoes free expansion when it swells with fluid, isotropy of the material implies $\hat{\lambda}_R = \hat{\lambda}_\theta = \hat{\lambda}$. Then $\hat{\lambda} = \lambda$ and the axial force $F = 0$, by (67). Thus, the "universal relation" (68) is defined only when $\lambda \neq \hat{\lambda}$, in which case $F \neq 0$.

*ACKNOWLEDGEMENT

K.R. Rajagopal would like to acknowledge the solid mechanics program of the National Science Foundation for its support.

BIBLIOGRAPHY

- [1] Rivlin, R.S. Large elastic deformations of isotropic materials, VI. Further results in the theory of torsion shear and flexure, *Phil. Trans. Roy. Soc. London*, A242, 173-195 (1949).
- [2] Treloar, L.R.G. Swelling of a rubber cylinder in torsion: Part 1. *Theory, Polymer*, 13, 195-202 (1972).
- [3] Bowen, R.M. *Theory of Mixtures, Continuum physics* (edited by A.C. Eringen) Vol. 3, Academic Press, New York (1978).
- [4] Atkin, R.J. and Craine, R.E. Continuum theories of mixtures: Basic theory and historical development, *Quart. J. Mech. Appl. Math.*, 29(2), 209-244 (1976).
- [5] Mills, N., Incompressible mixtures of Newtonian fluids, *Int. J. Eng. Sci.*, 4, 97-112 (1966).
- [6] Shi, J.J., Rajagopal, K.R., Wineman, A.S. Applications of the theory of interacting continua to the diffusion of a fluid through a non-linear elastic media, *Intl. J. Eng. Sci.*, 19, 871-889 (1981).
- [7] Treloar, L.R.G., *The Physics of rubber elasticity*, Oxford (1975).

REPORT DOCUMENTATION PAGE		READ INSTRUCTIONS BEFORE COMPLETING FORM
1. REPORT NUMBER 2587	2. GOVT ACCESSION NO. AD-A136351	3. RECIPIENT'S CATALOG NUMBER
4. TITLE (and Subtitle) COMBINED TENSION-TORSION OF A CYLINDRICAL MIXTURE OF AN ELASTIC SOLID AND FLUID	5. TYPE OF REPORT & PERIOD COVERED Summary Report - no specific reporting period	
	6. PERFORMING ORG. REPORT NUMBER	
7. AUTHOR(s) Mukesh Gandhi, K. R. Rajogopal and A. S. Wineman	8. CONTRACT OR GRANT NUMBER(s) DAAG29-80-C-0041	
9. PERFORMING ORGANIZATION NAME AND ADDRESS Mathematics Research Center, University of 610 Walnut Street Madison, Wisconsin 53706 Wisconsin		10. PROGRAM ELEMENT, PROJECT, TASK AREA & WORK UNIT NUMBERS Work Unit Number 6 - Miscellaneous Topics
11. CONTROLLING OFFICE NAME AND ADDRESS U. S. Army Research Office P. O. Box 12211 Research Triangle Park, North Carolina 27709	12. REPORT DATE October 1983	
	13. NUMBER OF PAGES 17	
14. MONITORING AGENCY NAME & ADDRESS (if different from Controlling Office)	15. SECURITY CLASS. (of this report) UNCLASSIFIED	
	15a. DECLASSIFICATION/DOWNGRADING SCHEDULE	
16. DISTRIBUTION STATEMENT (of this Report) Approved for public release; distribution unlimited.		
17. DISTRIBUTION STATEMENT (of the abstract entered in Block 20, if different from Report)		
18. SUPPLEMENTARY NOTES		
19. KEY WORDS (Continue on reverse side if necessary and identify by block number) Universal relation, torsion, finite extension, stored energy function, saturation		
20. ABSTRACT (Continue on reverse side if necessary and identify by block number) In his study of combined finite extension and torsion of a nonlinearly elastic cylinder, Rivlin [1] established a relation for the torsional stiffness which depends only on the axial force, the axial extension ratio and the radius of the undeformed cylinder, in the case of small twist. The relationship did not depend on the structure of the stored energy function and is hence termed a "Universal Relation." In this paper, we extend Rivlin's [1] result to the case of combined extension and torsion of a cylindrical mixture of a nonlinearly elastic solid and fluid.		