

AD-A134 776

CALCULATING THE MAGNETIC FIELD FROM A SADDLE-SHAPED
COIL WITHOUT A FERROM. (U) FOREIGN TECHNOLOGY DIV
WRIGHT-PATTERSON AFB, OH L P GNEDIN ET AL. 20 OCT 83

1/1

UNCLASSIFIED

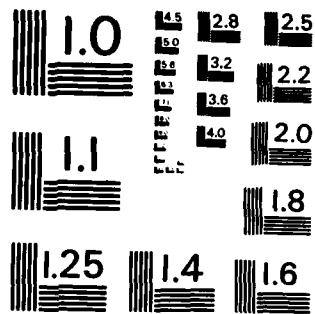
FTD-ID(RS)T-1131-83

F/G 12/1

NL



END
DATE
FILMED
12 83
DTIC



MICROCOPY RESOLUTION TEST CHART
NATIONAL BUREAU OF STANDARDS-1963-A

2

AD-A134 776

FTD-ID(RS)T-1131-83

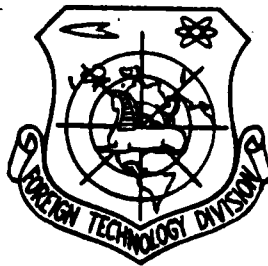
FOREIGN TECHNOLOGY DIVISION



CALCULATING THE MAGNETIC FIELD FROM A SADDLE-SHAPED
COIL WITHOUT A FERROMAGNETIC CIRCUIT

by

L. P. Gnedin, G. G. Borzov



DTIC
SELECTED
NOV 15 1983
S E

DTIC FILE COPY



Approved for public release;
distribution unlimited.

83 11 16 106

EDITED TRANSLATION

FTD-ID(RS)T-1131-83

20 October 1983

MICROFICHE NR: FTD-83-C-001287

CALCULATING THE MAGNETIC FIELD FROM A SADDLE-SHAPED
COIL WITHOUT A FERROMAGNETIC CIRCUIT

By: L. P. Gnedin, G. G. Borzov

English pages: 8

Source: Elektrotehnika, Vol. 42, Nr. 9, September
1971, pp. 41-44--

Country of origin: USSR

Translated by: Carol S. Nack

Requester: FTD/TQTD

Approved for public release; distribution unlimited.

Accession For	
NTIS GRA&I	<input checked="" type="checkbox"/>
DTIC TAB	<input type="checkbox"/>
Unannounced	<input type="checkbox"/>
Justification	<input type="checkbox"/>
By _____	
Distribution/ _____	
Availability Codes	
Dist	Special
A-1	

DTIC
COPY
INSPECTED
2

THIS TRANSLATION IS A RENDITION OF THE ORIGINAL FOREIGN TEXT WITHOUT ANY ANALYTICAL OR EDITORIAL COMMENT. STATEMENTS OR THEORIES ADVOCATED OR IMPLIED ARE THOSE OF THE SOURCE AND DO NOT NECESSARILY REFLECT THE POSITION OR OPINION OF THE FOREIGN TECHNOLOGY DIVISION.

PREPARED BY:
TRANSLATION DIVISION
FOREIGN TECHNOLOGY DIVISION
WP-AFB, OHIO.

U. S. BOARD ON GEOGRAPHIC NAMES TRANSLITERATION SYSTEM

Block	Italic	Transliteration	Block	Italic	Transliteration
А а	<i>А а</i>	A, a	Р р	<i>Р р</i>	R, r
Б б	<i>Б б</i>	B, b	С с	<i>С с</i>	S, s
В в	<i>В в</i>	V, v	Т т	<i>Т т</i>	T, t
Г г	<i>Г г</i>	G, g	У у	<i>У у</i>	U, u
Д д	<i>Д д</i>	D, d	Ф ф	<i>Ф ф</i>	F, f
Е е	<i>Е е</i>	Ye, ye; E, e*	Х х	<i>Х х</i>	Kh, kh
Ж ж	<i>Ж ж</i>	Zh, zh	Ц ц	<i>Ц ц</i>	Ts, ts
З з	<i>З з</i>	Z, z	Ч ч	<i>Ч ч</i>	Ch, ch
И и	<i>И и</i>	I, i	Ш ш	<i>Ш ш</i>	Sh, sh
Й й	<i>Й й</i>	Y, y	Щ щ	<i>Щ щ</i>	Shch, shch
К к	<i>К к</i>	K, k	Ъ ъ	<i>Ъ ъ</i>	"
Л л	<i>Л л</i>	L, l	Ы ы	<i>Ы ы</i>	Y, y
М м	<i>М м</i>	M, m	Ь ь	<i>Ь ь</i>	'
Н н	<i>Н н</i>	N, n	Э э	<i>Э э</i>	E, e
О о	<i>О о</i>	O, o	Ю ю	<i>Ю ю</i>	Yu, yu
П п	<i>П п</i>	P, p	Я я	<i>Я я</i>	Ya, ya

*ye initially, after vowels, and after ъ, ь; e elsewhere.
When written as ë in Russian, transliterate as yë or ë.

RUSSIAN AND ENGLISH TRIGONOMETRIC FUNCTIONS

Russian	English	Russian	English	Russian	English
sin	sin	sn	sinh	arc sh	sinh ⁻¹
cos	cos	ch	cosh	arc ch	cosh ⁻¹
tg	tan	th	tanh	arc th	tanh ⁻¹
ctg	cot	cth	coth	arc cth	coth ⁻¹
sec	sec	sch	sech	arc sch	sech ⁻¹
cosec	csc	csch	csch	arc csch	csch ⁻¹

Russian English

rot curl
lg log

GRAPHICS DISCLAIMER

All figures, graphics, tables, equations, etc. merged into this translation were extracted from the best quality copy available.

CALCULATING THE MAGNETIC FIELD FROM A SADDLE-SHAPED COIL WITHOUT A FERROMAGNETIC CIRCUIT

L. P. Gnedin, Dr. Tech. Sci.; G. G. Borzov, Engr.

Mathematical formulae for the components of induction of the magnetic field and the magnetic flux from a coil with saddle-shaped side sections in a system without a magnetic circuit are given.

The use of superconductors to generate high-strength magnetic fields in the excitation systems of MHD converters and electrical machines makes it possible to eliminate the magnetic circuit in these devices [1].

The most popular configuration of the excitation coil of an electrical machine can be composed of two elements: a rectilinear side part, and an arc-shaped front section with radius R (Fig. 1) - the so-called C type [2]. The problem of calculating the induction of the magnetic field from the arc-shaped front section was solved using the Biot-Savart law in [3], in which the approximate formulae proposed in [3] are only satisfied for small distances from the Z-axis.

The effect of the front sections was not considered in [4, 5]. In short coils, e.g., in the excitation coils of a DC collector or in MHD converters with a short channel, the component of induction from the front section can exceed the induction from the side part.

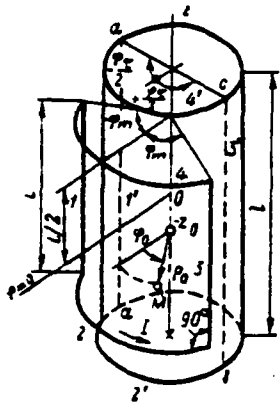


Fig. 1. Calculating the magnetic field of a saddle-shaped coil.

In order to calculate the magnetic field of an electrical machine, it is necessary to know both the induction at any point in space, e.g., for determining the losses in the armature circuits, and in the main working flux through the polar surface of the armature.

During an engineering calculation of an electrical machine without using an electronic computer or for checking a program which has been written, it is desirable to express the induction and flow using elementary functions. This problem is considered in the proposed article.

We will define the magnetic induction as the vector potential \bar{A} in cylindrical coordinates:

$$\left. \begin{aligned} B_z &= \frac{1}{r_0} \frac{\partial A_z}{\partial \varphi_0} - \frac{\partial A_\varphi}{\partial z_0}, \\ B_r &= \frac{1}{r_0} \frac{\partial (r_0 A_\varphi)}{\partial r_0} - \frac{1}{r_0} \frac{\partial A_z}{\partial \varphi_0}, \\ B_\varphi &= \frac{\partial A_r}{\partial z_0} - \frac{\partial A_z}{\partial r_0}, \end{aligned} \right\} \quad (1)$$

where r_0, φ_0, z_0 are the coordinates of the current point.

The origin of coordinates coincides with the rotational axis of the armature, and the counting axis of the angles passes through the center of the polar surface of the armature.

We will make the following assumptions.

1. We will replace the cross section of the coil with an infinitely thin conductor at the geometric center of the cross section with current i equivalent to the current of the entire cross section of the coil.

2. We will consider the plane in which the front part is located to be perpendicular to the side parts of the coil.

INDUCTION COMPONENTS FROM FRONT PART OF EXCITATION COIL
(from circuit 2 in Fig. 1)

a) The radial induction component is B_{r2} . The component $A_z = 0$ in expression (1) for B_{r2} (assumption 2). For the direction of the currents used in Fig. 1, the component

$$A_z = \frac{\mu_0 i R}{4\pi} \int_{-\varphi_m}^{\varphi_m} \frac{\cos(\varphi_0 - \varphi) d\varphi}{\sqrt{\rho_0^2 + R^2 - 2R\rho_0 \cos(\varphi_0 - \varphi) + (L/2 + z_0)^2}}, \quad (2)$$

where φ_m is the angle of placement of the side part of the excitation coil; φ is the angular position of the current element; L is the length of the excitation coil.

Substituting (2) in expression B_r and setting $\varphi_0 - \varphi = \pi - 2\gamma$, we obtain:

$$B_{r2} = \frac{\mu_0 i k^2 (L/2 + z_0)}{16\pi \rho_0^2 \sqrt{q}} \int_{\alpha}^{\beta} \frac{(2\sin^2 \gamma - 1) d\gamma}{(\sqrt{1 - k^2 \sin^2 \gamma})^3}, \quad (3)$$

where

$$\alpha = \frac{\pi - \varphi_m - \varphi_0}{2}, \quad \beta = \frac{\pi + \varphi_m - \varphi_0}{2},$$

$$k^2 = \frac{4\rho_0 R}{(R + \rho_0)^2 + (L/2 + z_0)^2}, \quad q = \frac{R}{\rho_0}.$$

The integral in expression (3) forms the sum of the integrals, one of which $\int \frac{\cos^2 \gamma d\gamma}{(\sqrt{1 - k^2 \sin^2 \gamma})^3}$ gives us $V = \int \frac{\cos \gamma d\gamma}{(\sqrt{1 - k^2 \sin^2 \gamma})^2}$ during the solution by parts.

The integral V is solved by the replacement of $\sin \gamma = t$, with the subsequent substitution of $\sqrt{(1 - kt)(1 + kt)} = (1 + kt)x$.

As a result, we obtain:

$$B_{r2} = \frac{\mu_0 i (L/2 + z_0) k}{8\pi \rho_0^2 \sqrt{q}} \left\{ \frac{2 - k^2}{2(1 - k^2)} [E_{(\beta, k)} - E_{(\alpha, k)}] - [F_{(\beta, k)} - F_{(\alpha, k)}] - \frac{2 - k^2}{2(1 - k^2)} \frac{k^2}{2} \times \left(\frac{\sin 2\beta}{\sqrt{1 - k^2 \sin^2 \beta}} - \frac{\sin 2\alpha}{\sqrt{1 - k^2 \sin^2 \alpha}} \right) \right\}, \quad (4)$$

where E , F are the incomplete elliptical integrals of the second and first types, respectively, taken from the table in report [6], where $F(-\varphi) = -F(\varphi)$, $F(2\alpha \pm \varphi) = 2nK \pm F(\varphi)$; K is the total integral, The situation is analogous for E .

b) With A_p determined from (2) with the replacement of $\cos(\varphi_0 - \varphi)$ by $-\sin \varphi$, the component of induction on the Z-axis will be:

$$B_{z2} = \frac{\mu_0 i k}{8\pi^2 \rho_0 \sqrt{q}} \left\{ [F(\beta, k) - F(\alpha, k)] + \frac{k^2(q+1)-2}{2(1-k^2)} [E(\beta, k) - E(\alpha, k)] - \frac{k^2(q+1)-2}{2(1-k^2)} \frac{k^2}{2} \left(\frac{\sin 2\beta}{\sqrt{1-k^2 \sin^2 \beta}} - \frac{\sin 2\alpha}{\sqrt{1-k^2 \sin^2 \alpha}} \right) \right\} \quad (5)$$

c) The tangential component of induction:

$$B_{\varphi 2} = \frac{\mu_0 i (L/2 + z_0) k}{8\pi^2 \rho_0 \sqrt{q}} \times \left(\frac{1}{\sqrt{1-k^2 \sin^2 \beta}} - \frac{1}{\sqrt{1-k^2 \sin^2 \alpha}} \right) \quad (6)$$

For conductor 4, expressions (4)-(6) are valid with the replacement of $(z_0 + L/2)$ by $(z_0 - L/2)$ and the circuit $-i$ (the value of k changes in this case).

The point $\rho_0=0$ is a singular point for expressions (4)-(6). The following expressions of the induction components were obtained for this point:

$$\left. \begin{aligned} B_r(\rho=0) &= \frac{\mu_0 i R (L/2 + z_0) \sin \varphi_m \cos \varphi_0}{2\pi [R^2 + (L/2 + z_0)^2]^{3/2}} \\ B_z(\rho=0) &= \frac{\mu_0 i R^2 \varphi_m}{2\pi [R^2 + (L/2 + z_0)^2]^{3/2}} \\ B_\varphi(\rho=0) &= \frac{\mu_0 i R (L/2 + z_0) \sin \varphi_m \sin \varphi_0}{2\pi [R^2 + (L/2 + z_0)^2]^{3/2}} \end{aligned} \right\} \quad (7)$$

Components of Induction from the Side Part of the Excitation Coil (Circuit 3). Only

$$A_z = \frac{\mu_0 i}{4\pi} \int_{-L/2}^{+L/2} \frac{dz}{\sqrt{R^2 + \rho_0^2 - 2R\rho_0 \cos(\varphi_m - \varphi_0) + (z - z_0)^2}} \quad (8)$$

is present in (1).

We obtain the following expressions:

$$B_{z3} = \frac{\mu_0 i R \sin 2\beta}{4\pi (R + \rho_0)^2 (1 - m^2 \sin^2 \beta)} \times \left[\frac{L/2 - z_0}{\sqrt{1 - m^2 \sin^2 \beta} + \left(\frac{L/2 - z_0}{R + \rho_0}\right)^2} + \frac{L/2 + z_0}{\sqrt{1 - m^2 \sin^2 \beta} + \left(\frac{L/2 + z_0}{R + \rho_0}\right)^2} \right] \quad (9)$$

$$B_{\theta} = \frac{\mu_0 i (\rho_0 + R \cos 2\beta)}{4\pi (R + \rho_0)^2 (1 - m^2 \sin^2 \beta)} \times \left[\frac{L/2 - z_0}{\sqrt{1 - m^2 \sin^2 \beta + \left(\frac{L/2 - z_0}{R + \rho_0}\right)^2}} + \frac{L/2 + z_0}{\sqrt{1 - m^2 \sin^2 \beta + \left(\frac{L/2 + z_0}{R + \rho_0}\right)^2}} \right] \quad (9)$$

where

$$m^2 = 4\rho_0 R (R + \rho_0)^2.$$

For circuit 1, formulae (9) are valid when β is replaced by α and with the current $-i$. The components of the t -th excitation coil are determined from the above expressions when φ_0 is replaced by $\varphi_{0t} = [\pi/p(t-1) + \varphi_0]$, where p is the number of pairs of poles in the excitation system (with the angle counted in the positive direction).

Calculating the Main Magnetic Flux. We will define the flow through the polar surface $a_2'b_2'c_4'd_4$ (Fig. 1) as $\Phi = \int Idl$ [7]. We will express Φ as the sum of the fluxes from the current in the side parts of the coil as Φ_s , and in the front parts $-\Phi_a$. Based on the symmetry of the magnetic system, the sides are found under identical magnetic conditions; therefore, da and bc

$$\Phi_s = 2 \int_{-l/2}^{l/2} A_{3,3'} dz_1 - 2 \int_{-l/2}^{l/2} A_{1,3'} dz_1. \quad (10)$$

where $A_{3,3'}$ is the vector potential from the current in circuit 3 on line 3' of the armature contour; $A_{1,3'}$ - from the current in circuit 1 on line 3'.

The vector potential from the current in circuit m (1 or 3) on line 3'

$$A_{m,3'} = -\frac{\mu_0 i}{4\pi} \ln \frac{(z_1 - L/2) + \sqrt{(z_1 - L/2)^2 + a_{m,3'}^2}}{(z_1 + L/2) + \sqrt{(z_1 + L/2)^2 + a_{m,3'}^2}}, \quad (11)$$

where z_1 is the coordinate of the current point on line 3' on the Z-axis,

$$a_{1,3'}^2 = R^2 + \rho_0^2 - 2R\rho_0 \cos(\varphi_0 + \varphi_m);$$

$$a_{3,3'}^2 = R^2 + \rho_0^2 - 2R\rho_0 \cos(\varphi_0 - \varphi_m).$$

Solving expression (9), we obtain:

$$\Phi_0 = + \frac{4\rho_0 i}{2\pi} (f_{3,3'} - f_{1,3'}),$$

where

$$f_{m,3'} = 2 \sqrt{\left(\frac{L+l}{2}\right)^2 + a_{m,3'}^2} - 2 \sqrt{\left(\frac{l-L}{2}\right)^2 + a_{m,3'}^2} + \\ + \frac{l-L}{2} \ln \frac{\frac{l-L}{2} + \sqrt{\left(\frac{l-L}{2}\right)^2 + a_{m,3'}^2}}{-\frac{l-L}{2} + \sqrt{\left(\frac{l-L}{2}\right)^2 + a_{m,3'}^2}} + \frac{l+L}{2} \ln \frac{-\frac{l+L}{2} + \sqrt{\left(\frac{l+L}{2}\right)^2 + a_{m,3'}^2}}{\frac{l+L}{2} + \sqrt{\left(\frac{l+L}{2}\right)^2 + a_{m,3'}^2}} \quad (12)$$

The flux from the front parts

$$\Phi_x = 2\rho_0 \int_{-\frac{\varphi_0}{2}}^{\frac{\varphi_0}{2}} (A_{2,2'} - A_{4,2'}) d\varphi_0. \quad (13)$$

The value of the vector potential is found by solving expression (2), as a result of which we obtain the formula for calculating the flow

$$\Phi_x = \frac{4\rho_0 i \rho_0 \sqrt{q}}{\pi} \int_{-\frac{\varphi_0}{2}}^{\frac{\varphi_0}{2}} f(\varphi_0) d\varphi_0. \quad (14)$$

where

$$f(\varphi_0) = \frac{2-k_2^2}{2k_2} [F(\beta, k_2) - F(\alpha, k_2)] - \\ - \frac{1}{k_2} [E(\beta, k_2) - E(\alpha, k_2)] - \frac{2-k_4^2}{2k_4} [F(\beta, k_4) - F(\alpha, k_4)] + \\ + \frac{1}{k_4} [E(\beta, k_4) - E(\alpha, k_4)], \\ k_2^2 = \frac{4\rho_0 R}{\left(\frac{L-l}{2}\right)^2 + (R+\rho_0)^2}, \quad k_4^2 = \frac{4\rho_0 R}{\left(\frac{L+l}{2}\right)^2 + (R+\rho_0)^2},$$

$\varphi_0 = \pi/\rho$ is the angular value of the polar spacing.

The integral of expression (14) can be found by any numerical method (e.g., using the Simpson rule [8]).

The value of the flow from the t -th pole is determined from the formulae given above, with φ_0 replaced by $\varphi_{0t} = \pi/\rho(t-1) + \varphi_0$; the sign of expression (14) is equal to $(-1)^{t-1}$ in this case.

The induction component $B_z = f(z)$ of the superconductive excitation system of a dipole machine was calculated using the above formulae at $\varphi_0 = 0$ and $\rho_0 = 14.75 \cdot 10^{-2}$ m (for the surface of a cryostat). The results of the calculation are compared with the experimental data in Fig. 2.

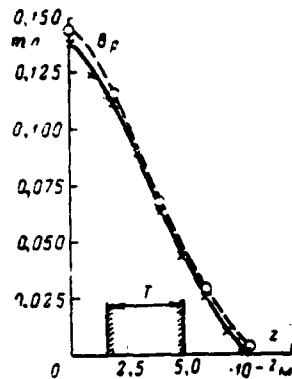


Fig. 2. Change in induction along machine at $\rho_0 = 14.75$ cm, $\varphi_0 = 0$.
 T - zone of front part of excitation winding;
 ——— - experimental curve;
 - - - - calculated curve;
 - computer calculation.

The calculated value of B_z at point $\varphi_0 = \pi/2$, $\rho_0 = 3.9 \cdot 10^{-2}$ m, $z = 0$ was experimentally verified. The results agree, within the limits of the precision of measurement of induction with instrument type Ye-11.

The main flux of the machine on the calculated diameter of the armature was determined from (12) and (14). The arc spacing was 18° . The excitation coil was replaced by an infinitely thin turn. The divergence of the experimental value of the flux, determined from the machine's EMF, from the calculated value is less than 5%.

CONCLUSIONS

1. The proposed formulae can be used in the electromagnetic calculation of an electrical machine with superconductive excitation without a magnetic circuit.
2. The magnetic flux of a machine with an armature diameter of 100-150 mm can be calculated by replacing the coil cross section with one infinitely thin conductor in the geometric center of the cross section.
3. During the precise calculation of induction in both the zone of the armature winding, and in the points close to the excitation winding, it is necessary to divide the coil cross section into several

elementary cross sections, and to replace each by an infinitely thin conductor. The breakdown of the cross section into more than 16 sections virtually does not change the result of the calculation at points which are at a distance equal to the height of the coil.

4. The formulae can be used to calculate magnetic systems with saddle-shaped MHD converters.

REFERENCES

1. Е. Я. Казовский, В. П. Карцев, В. Н. Шахтарин. Сверхпроводящие магнитные системы. Изд-во «Наука», 1967.
2. T. Doi, H. Kimura, S. Satō, K. Kuroda, H. Ogata, M. Kato and U. Kawabe. Superconducting Saddle Shaped Magnets. Cryogenics, October, 1968.
3. F. K. Harris. J. of research of the national bureau of standards, 1954, v. 13, № 3, p. 391—410.
4. R. H. Lyddane and A. E. Ruark. The Review of Scientific Instr., 1939, v. 10, № 9.
5. H. H. Woodson, Z. J. J. Stekly, E. Halas. Power Apparatus and Systems, 1959, № 3, v. 35, p. 264.
6. В. М. Беляков и др. Таблицы эллиптических интегралов. Изд-во «Наука», 1963, ч. I.
7. Л. Р. Нейман, П. Л. Калантаров. Теоретические основы электротехники. Госэнергоиздат, 1959, ч. III.
8. Г. Б. Двайт. Таблицы интегралов. Изд-во «Наука», 1964.