

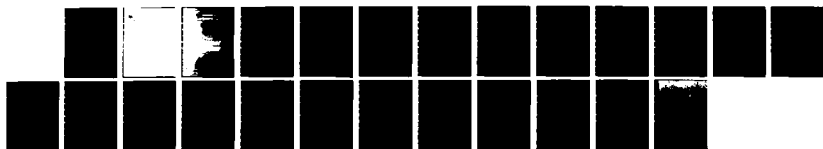
AD-R134 477

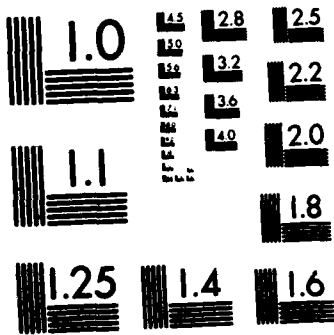
14818A LANCE MISSILE NUMBER 4586 ROUND NUMBER 392-APL  
28 SEPTEMBER 1983(U) ARMY ELECTRONICS RESEARCH AND  
DEVELOPMENT COMMAND WSMR NM ATM. . D C KELLER 28 SEP 83  
ERADCOM/ASL-DR-1319 F/G 4/2

1/1

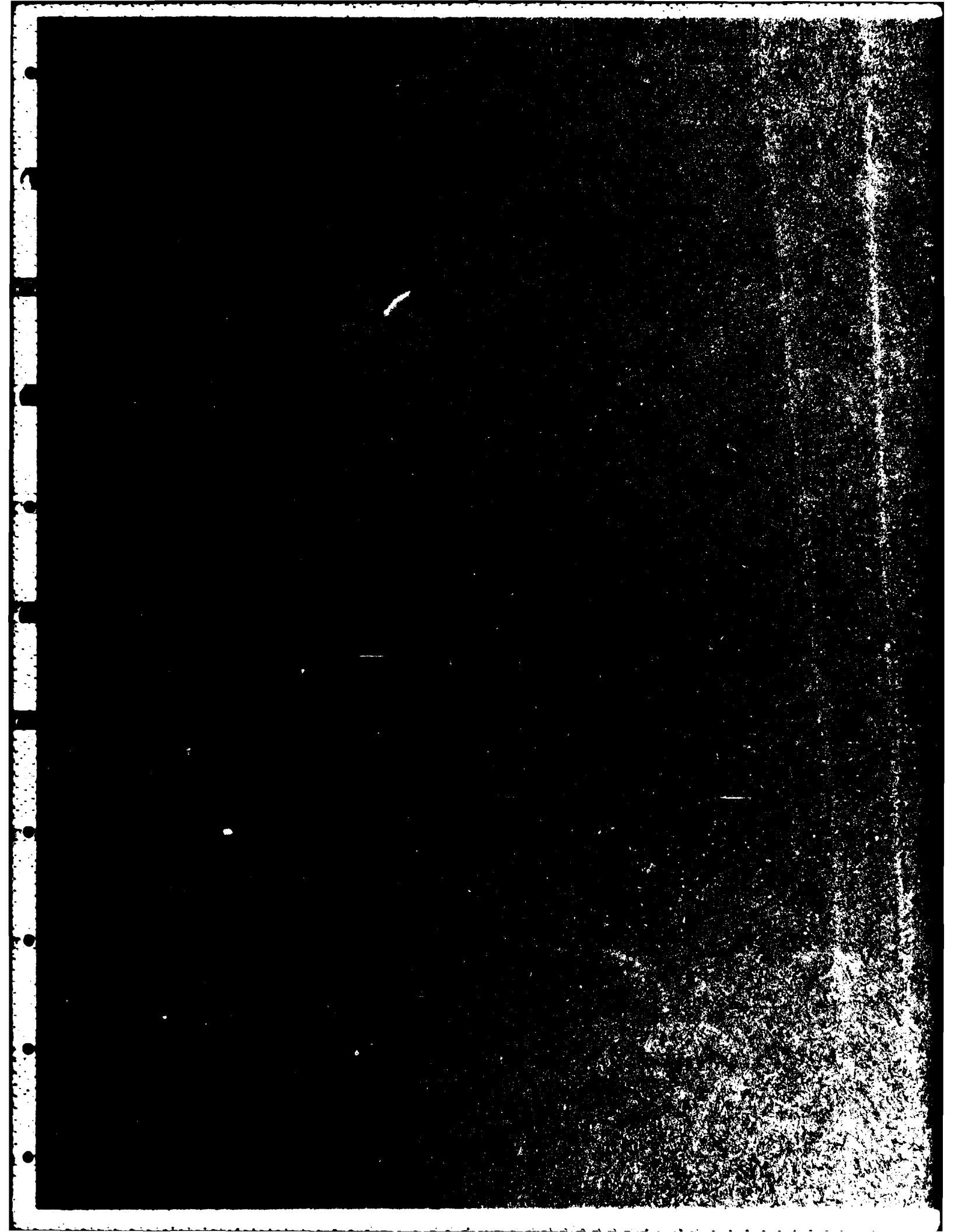
UNCLASSIFIED

NL





MICROCOPY RESOLUTION TEST CHART  
NATIONAL BUREAU OF STANDARDS-1963-A



UNCLASSIFIED

SECURITY CLASSIFICATION OF THIS PAGE (When Data Entered)

REPORT DOCUMENTATION PAGE		READ INSTRUCTIONS BEFORE COMPLETING FORM
1. REPORT NUMBER DR 1319	2. GOVT ACCESSION NO. <b>AD-A134477</b>	3. RECIPIENT'S CATALOG NUMBER
4. TITLE (and Subtitle) 14818A LANCE Missile Number 4586 Round Number 392-APL	5. TYPE OF REPORT & PERIOD COVERED	
	6. PERFORMING ORG. REPORT NUMBER	
7. AUTHOR(s) White Sands Meteorological Team	8. CONTRACT OR GRANT NUMBER(s) DA Task 1F665702D127-02	
9. PERFORMING ORGANIZATION NAME AND ADDRESS	10. PROGRAM ELEMENT, PROJECT, TASK AREA & WORK UNIT NUMBERS	
11. CONTROLLING OFFICE NAME AND ADDRESS US Army Electronics Research & Development Cmd Atmospheric Sciences Laboratory White Sands Missile Range, New Mexico 88002	12. REPORT DATE 28 September 1983	
	13. NUMBER OF PAGES 22	
14. MONITORING AGENCY NAME & ADDRESS (if different from Controlling Office) US Army Electronics Research and Development Cmd Adelphi, MD 20783	15. SECURITY CLASS. (of this report)  UNCLASSIFIED	
	15a. DECLASSIFICATION/DOWNGRADING SCHEDULE	
16. DISTRIBUTION STATEMENT (of this Report)		
17. DISTRIBUTION STATEMENT (of the abstract entered in Block 20, if different from Report)  Approved for public release; distribution unlimited.		
18. SUPPLEMENTARY NOTES		
19. KEY WORDS (Continue on reverse side if necessary and identify by block number)		
20. ABSTRACT (Continue on reverse side if necessary and identify by block number) Meteorological data gathered for the launching of the 14818A LANCE, Missile Number 4586, Round Number 392-APL, are presented in tabular form.		

CONTENTS

PAGE

INTRODUCTION -----	1
DISCUSSION -----	1
GENERAL AREA MAP -----	2
 TABLES	
1. Surface Observation Taken at 1544 MDT at LC-39 -----	3
2. Pilot Balloon Measured Wind Data Taken at 1606 MDT AT LC-36 --	4
3. T-Time Computer Met Messages -----	5
4. WSD Significant Level Data Taken at 1544 MDT -----	6
5. WSD Upper Air Data Taken at 1544 MDT -----	8
6. WSD Mandatory Levels Taken at 1544 MDT -----	12
7. SMR Significant Level Data Taken at 1544 MDT -----	13
8. SMR Upper Air Data Taken at 1544 MDT -----	15
9. SMR Mandatory Levels Taken at 1544 MDT -----	19

## INTRODUCTION

14818A Lance, Missile Number 4586, Round Number 392-APL, was launched from LC-39, White Sands Missile Range (WSMR), New Mexico, at 1544:22 MDT 28 September 1982. The scheduled launch time was 1600 MDT.

## DISCUSSION

Meteorological data were recorded and reduced by the White Sands Meteorological Team, Atmospheric Sciences Laboratory (ASL), White Sands Missile Range, New Mexico. The data were obtained by the following methods:

### 1. Observations

#### a. Surface

(1) Standard surface observations to include pressure, temperature ( $^{\circ}\text{C}$ ), relative humidity, dew point ( $^{\circ}\text{C}$ ), density ( $\text{gm}/\text{m}^3$ ), wind direction and speed, and cloud cover were made at the LC-39 Met Site at T-0 minutes.

(2) Anemometer data were provided from existing pole-mounted and tower-mounted anemometers at LC-33. Monitor of wind speed and direction from one anemometer was also provided in the launch control room.

#### b. Upper Air

(1) Low level wind data were obtained from RAPTS T-9 pibal observation at:

### SITE AND ALTITUDE

LC-36 2760 meters

(2) Air structure data (rawinsonde) were collected at the following Met Sites. Data were collected from surface to high as possible feet in 500-foot increments.

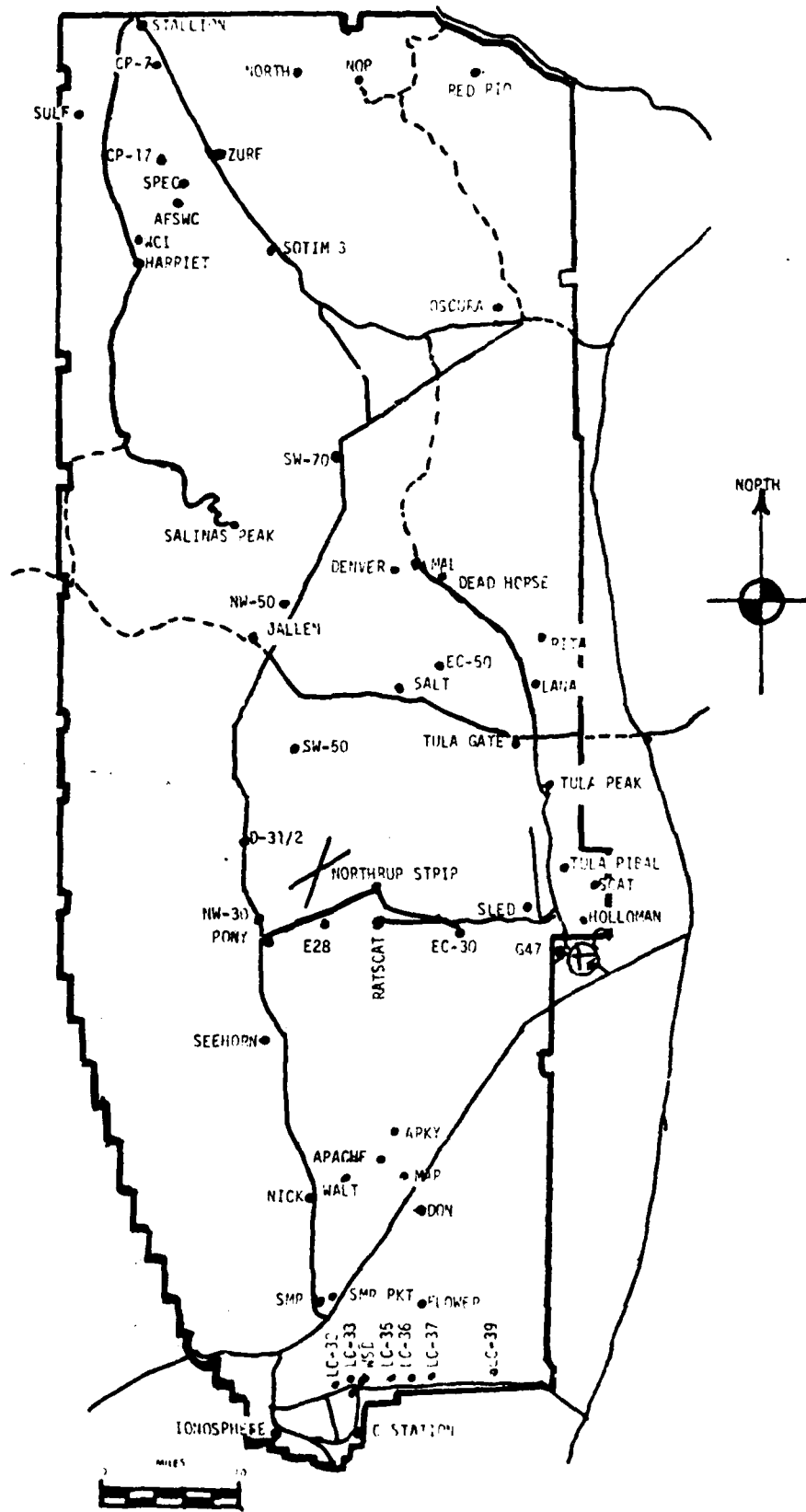
### SITE AND TIME

WSD 1544 MDT  
SMR 1544 MDT



A-1

# WSMR METEOROLOGICAL SITES



PROJECT SURFACE OBSERVATION

TABLE 1 STATION IC-39

DATE 28 SEP 83 X = 530,938.82 Y = 186,564.96 H = 4063.75  
 DAY MONTH YEAR

TIME M D T	PRESSURE mbs	TEMPERATURE OF OC	DEW POINT OF OC	RELATIVE HUMIDITY %	DENSITY gm/m <sup>3</sup>	WIND		VISIBIL- ITY
						DIRECTION degs In	SPEED kts	
1544	877.5	22.1	14.0	60		250	20	G30

OBSTRUCTIONS TO VISIBILITY	CLOUDS						REMARKS
	1st LAYER		2nd LAYER		3rd LAYER		
	AMT	HGT	AMT	HGT	AMT	HGT	
	4	CU 6,500	4	AS 15,000	1	CU 27,000	TCU N THRU S. T W THRU NW
							MOVG N OCNL LTCCG W THRU N

PSYCHROMETRIC COMPUTATION

TIME:	1544
DRY BULB TEMP.	22.1
WET BULB TEMP.	16.8
WET BULB DEPR.	5.3
DEW POINT	14.0
RELATIVE HUMID.	60



# WINDS ALOFT DATA

 TABLE NUMBER  2 

 RELEASED FROM  LC-36  DATE  28 Sep 83  TIME  1606  MST  '01 X 

 NSTM COORDINATES: X=  504,466.00  Y=  190,732.16  H=  4037.21 

 METHOD OF DATA COLLECTION: S/T  \_\_\_\_\_  D/T  \_\_\_\_\_  T-9  X  PAOD  \_\_\_\_\_  PAVIN  \_\_\_\_\_ 

 HEIGHTS: METERS AGL  X  FEET AGL  \_\_\_\_\_  METERS MSL  \_\_\_\_\_  FEET MSL  \_\_\_\_\_ 

HEIGHT	DIRECTION DEGREES	SPEED KTS	HEIGHT	DIRECTION DEGREES	SPEED KTS	HEIGHT	DIRECTION DEGREES	SPEED KTS
SFC	280	16	1680	246	06			
60	289	17	1740	240	05			
120	297	17	1800	232	04			
180	302	21	1860	245	07			
240	307	25	1920	244	04			
300	301	26	1980	274	04			
360	300	28	2040	226	03			
420	288	29	2100	211	03			
480	285	27	2160	225	02			
540	285	25	2220	207	02			
600	283	25	2280	209	05			
660	287	18	2340	184	05			
720	280	19	2400	201	08			
780	296	14	2460	192	08			
840	304	12	2520	163	08			
900	299	11	2580	157	08			
960	314	08	2640	149	08			
1020	303	05	2700	157	07			
1080	309	05	2760	154	07			
1140	294	04						
1200	295	05						
1260	282	05						
1320	245	05						
1380	243	03						
1440	236	04						
1500	219	05						
1560	232	05						
1620	236	04						

T-TIME COMPUTER MET MESSAGE DATA

28 September 1983

WSD 1544 MDT  
 METCM1324064  
 282170122879

SMR 1544 MDT  
 METCM1325064  
 282170122879

00498020 29830879  
 01511024 29540869  
 02548026 29400844  
 03520016 29260806  
 04408004 28900760  
 05396006 28500716  
 06399009 28100674  
 07347009 27730634  
 08387008 27370596  
 09308011 27030560  
 10361021 26730526  
 11389028 26440493  
 12384034 25880447  
 13399029 25220391  
 14422024 24600341  
 15410027 23780297  
 16414046 22920256  
 17422046 22100220  
 18441051 21400189  
 19434056 21060161  
 20419034 20620137  
 21377029 20270116  
 22378023 20230098  
 23367020 20760083  
 24409009 21120070  
 25437010 21520060  
 26447005 21670051

00596016 29800879  
 01543029 29430869  
 02516030 29320844  
 03508018 29130806  
 04182004 28800760  
 05220004 28450716  
 06291007 28030674  
 07291008 27670634  
 08316013 27300596  
 09346022 26960559  
 10384028 26660525  
 11392034 26390492  
 12400036 25950446  
 13429016 25340391  
 14408016 24580341  
 15412029 23710296  
 16420040 22910256  
 17427045 22060220  
 18444057 21330188  
 19436056 21000160  
 20412039 20510136  
 21385033 20290115  
 22360020 20310097  
 23377019 20640083  
 24440011 21150070  
 25437011 21410060  
 26414001 21590051

STATION ALTITUDE 3989.00 FEET MSL  
 28 SEP. 83  
 ASCENSION NO. 463

SIGNIFICANT LEVEL DATA  
 2710020463  
 WHITE SANDS

GEODLTIC COORDINATES  
 32.40043 LAT DEG  
 106.37033 LON DEG

TABLE 4

PRESSURE MILLIBARS	GEOMETRIC ALTITUDE MFL FEET	TEMPERATURE AIR DEGREES CENTIGRADE	REL. HUM. PERCENT
879.3	3989.0	22.5	64.0
870.9	4262.6	19.5	72.0
850.0	4750.3	18.9	69.0
845.4	5103.7	18.9	65.0
838.3	5342.3	19.1	65.0
805.0	6486.8	17.9	64.0
771.4	7682.0	15.0	71.0
756.0	8243.4	14.0	72.0
746.2	8605.3	12.8	82.0
736.4	8970.8	12.0	83.0
707.6	10060.9	9.6	76.0
700.0	10361.8	8.9	77.0
653.8	13041.4	3.0	71.0
615.2	13833.9	1.8	65.0
603.6	14337.7	.2	67.0
579.9	15391.3	-1.4	60.0
570.8	15805.5	-2.2	62.0
545.1	17003.0	-5.4	74.0
528.5	17800.8	-6.1	52.0
520.1	18213.1	-6.6	59.0
512.1	18611.3	-7.0	37.0
500.0	19223.4	-8.3	59.0
492.2	19624.1	-9.3	37.0
487.7	19857.8	-9.3	36.0
471.7	20702.8	-11.6	52.0
448.1	21790.4	-14.4	45.0
429.9	23020.2	-16.8	60.0
421.7	23495.4	-17.7	53.0
400.0	24787.7	-21.3	60.0
395.8	25043.8	-21.7	68.0
388.3	25508.8	-20.7	84.0
347.0	28216.5	-26.4	72.0
340.0	28700.5	-27.4	69.0
313.8	30584.0	-31.9	61.0
300.0	31624.3	-34.8	60.0
276.4	33489.1	-39.6	59.0
250.0	35721.9	-45.6	
200.0	40497.9	-57.1	
180.5	41615.3	-59.9	
170.5	43787.4	-60.5	

STATION ALTITUDE 3489.00 FEET MSL  
24 SEP. 83 1544 MDT  
ASCENSION NO. 463

SIGNIFICANT LEVEL DATA  
2710020463  
WHITE SANDS

GEODETIC COORDINATES  
52.40043 LAT DEG  
106.37033 LON DEG

TABLE 4 Cont'd

GEOMETRIC ALTITUDE	TEMPERATURE	REL. HUM.
MILLIBARS MSL FEET	AIR DEGREE CENTIGRADE	PERCENT
150.0 46390.6	-64.9	
144.3 47166.0	-66.5	
136.0 48350.3	-66.1	
124.0 50179.7	-70.2	
120.2 50788.6	-71.1	
109.0 52702.4	-70.2	
105.4 53361.9	-69.7	
100.0 54391.7	-71.4	
95.4 55307.9	-72.3	
85.4 57494.2	-65.5	
76.1 59810.9	-64.1	
70.0 61514.6	-62.0	
63.6 63489.5	-58.4	
50.0 68511.9	-56.4	
41.8 72304.8	-52.4	
30.2 73672.5	-54.0	
30.0 79362.8	-53.0	

GEODETIC COORDINATES  
32.40043 LAT DEG  
106.37033 LON DEG

UPPER AIR DATA  
2710020463  
WHITE SANDS

STATION ALTITUDE 3989.00 FEET MSL  
28 SEP. 83  
ASCENSION NO. 403

TABLE 5

GEOMETRIC ALTITUDE MSL FEET	PRESSURE MILLIBARS	TEMPERATURE		REL. HUM. PERCENT	DENSITY GM/CM <sup>3</sup> METER	SPEED OF SOUND KNOTS	WIND DATA		INDEX OF REFRACTION
		AIR DEGREES	DEWPOINT CENTIGRADE				DIRECTION DEGREES(TN)	SPEED KNOTS	
3989.0	879.5	22.5	15.4	64.0	1028.3	672.4	280.0	20.0	1.000305
4000.0	879.0	22.4	15.3	64.3	1028.3	672.2	280.1	20.0	1.000305
4500.0	863.6	19.3	13.7	69.9	1021.7	668.5	284.2	20.7	1.000297
5000.0	846.5	18.9	12.3	65.7	1005.6	667.9	288.1	21.6	1.000288
5500.0	833.6	18.4	12.2	64.9	987.8	668.0	291.7	22.5	1.000283
6000.0	819.0	18.4	11.6	64.4	972.4	667.3	293.6	21.3	1.000278
6500.0	804.6	17.9	11.0	64.1	957.2	666.7	292.1	15.5	1.000272
7000.0	790.4	16.7	10.5	67.0	944.3	665.2	289.0	10.5	1.000268
7500.0	776.4	15.4	10.0	69.9	931.6	663.8	282.2	6.8	1.000264
8000.0	762.6	14.4	9.4	71.6	918.4	662.6	282.1	3.8	1.000259
8500.0	749.0	13.1	8.6	79.1	905.9	661.2	228.3	3.5	1.000257
9000.0	735.6	11.9	8.1	82.8	893.5	659.7	208.4	4.3	1.000253
9500.0	722.4	10.8	7.5	79.6	881.3	658.3	213.5	5.2	1.000245
10000.0	709.3	9.7	5.8	76.4	869.2	656.9	218.6	6.2	1.000237
10500.0	696.4	8.6	4.7	76.7	857.1	655.4	224.3	7.2	1.000232
11000.0	683.6	7.5	3.5	75.6	844.9	654.1	225.9	8.1	1.000226
11500.0	671.1	6.4	2.2	74.5	832.9	652.7	221.6	8.8	1.000220
12000.0	658.7	5.3	0.9	73.3	821.1	651.3	218.3	9.4	1.000215
12500.0	646.7	4.2	-0.4	72.2	809.4	649.9	216.2	9.7	1.000210
13000.0	634.8	3.1	-1.6	71.1	797.9	648.5	214.2	9.7	1.000205
13500.0	623.0	2.3	-3.1	67.5	785.5	647.5	212.4	9.5	1.000199
14000.0	611.4	1.3	-4.4	65.7	774.0	646.2	209.1	7.3	1.000195
14500.0	599.9	-0.0	-5.6	65.9	763.3	644.6	197.2	6.8	1.000190
15000.0	588.6	-0.8	-7.0	62.6	751.1	643.7	184.5	6.8	1.000186
15500.0	577.5	-1.6	-8.2	60.5	739.3	642.7	176.9	8.1	1.000182
16000.0	566.5	-2.7	-9.6	63.9	728.3	641.3	173.1	9.7	1.000179
16500.0	555.8	-4.1	-8.9	69.0	717.9	639.7	160.2	11.7	1.000176
17000.0	545.2	-5.4	-9.3	74.0	707.8	638.1	185.2	13.9	1.000174
17500.0	534.7	-5.8	-12.3	60.3	695.6	637.5	197.5	17.1	1.000178
18000.0	524.4	-6.5	-13.8	55.4	683.7	636.6	205.6	20.8	1.000174
18500.0	514.3	-6.9	-17.3	43.2	672.1	636.1	210.5	23.5	1.000170
19000.0	504.4	-7.8	-19.5	38.3	661.6	634.9	214.1	26.3	1.000159
19500.0	494.6	-9.0	-20.8	37.6	651.7	633.5	213.8	28.0	1.000151
20000.0	485.0	-9.7	-21.1	38.7	640.7	632.6	217.1	29.5	1.000149
20500.0	475.5	-11.0	-19.8	48.2	631.3	631.0	217.2	31.1	1.000148
21000.0	466.1	-12.2	-20.4	50.4	621.6	629.6	186.7	32.6	1.000145
21500.0	456.9	-13.5	-22.1	47.7	612.2	628.2	216.2	33.2	1.000142
22000.0	447.9	-14.4	-23.7	45.1	602.7	626.9	215.4	34.2	1.000139
22500.0	439.0	-15.6	-23.1	52.4	593.3	625.5	214.7	36.7	1.000136
23000.0	430.2	-16.8	-22.7	59.2	584.1	624.1	214.5	39.0	1.000135

STATION ALTITUDE 3989.00 FEET MSL  
 28 SEP. 83 1544 MDT  
 ASCENSION NO. 463

UPPER AIR DATA  
 2710020463  
 WHITE SANDS

GEODETIC COORDINATES  
 32.40043 LAT DEG  
 106.37033 LON DEG

TABLE 5 Cont'd

GEOMETRIC ALTITUDE MSL FEET	PRESSURE MILLIBARS	TEMPERATURE AIR DEGREES CELSIUS	TEMPERATURE DEWPOINT CENTIGRADE	REL. HUM. PERCENT	DENSITY GM/CM <sup>3</sup> METER	SPEED OF SOUND KNOTS	WIND DATA DIRECTION DEGREES(TN)	SPEED KNOTS	INDEX OF REFRACTION
23500.0	421.6	-17.7	-24.9	53.0	574.6	622.9	214.5	33.1	1.000133
24000.0	413.1	-19.1	-25.7	55.7	566.1	521.2	215.0	32.1	1.000130
24500.0	404.7	-20.5	-26.5	58.4	557.7	619.4	217.5	30.6	1.000128
25000.0	396.5	-21.6	-26.1	66.6	548.8	618.1	220.1	29.2	1.000127
25500.0	388.4	-20.7	-22.7	83.7	535.6	619.3	225.4	28.5	1.000125
26000.0	380.5	-21.7	-24.0	81.8	526.7	618.0	231.4	28.4	1.000123
26500.0	372.6	-22.8	-25.3	79.6	518.1	616.7	235.9	28.2	1.000120
27000.0	365.0	-23.8	-26.7	77.4	509.6	615.3	237.1	27.5	1.000118
27500.0	357.5	-24.9	-28.0	75.2	501.3	614.0	238.3	26.8	1.000115
28000.0	350.1	-25.9	-29.3	73.0	493.1	612.7	237.9	25.1	1.000113
28500.0	342.9	-27.0	-30.7	70.2	485.0	611.4	236.7	23.2	1.000111
29000.0	335.7	-28.1	-32.2	67.7	477.0	610.0	235.7	21.7	1.000109
29500.0	328.6	-29.3	-33.7	65.6	469.3	608.5	235.6	21.8	1.000107
30000.0	321.7	-30.5	-35.1	63.5	461.7	607.0	235.5	21.8	1.000105
30500.0	314.9	-31.7	-36.6	61.4	454.2	605.4	233.8	21.9	1.000103
31000.0	308.2	-33.1	-38.0	60.6	447.1	603.7	231.8	22.0	1.000101
31500.0	301.6	-34.5	-39.4	60.1	440.1	602.0	230.1	22.8	1.000099
32000.0	295.1	-35.8	-41.4	55.8	433.0	600.3	229.9	25.6	1.000097
32500.0	288.7	-37.1	-43.6	50.1	425.9	598.7	229.7	28.5	1.000096
33000.0	282.4	-38.3	-45.9	44.5	418.9	597.0	230.1	33.8	1.000094
33500.0	276.5	-39.6	-48.3	38.8**	412.1	595.4	230.6	40.3	1.000092
34000.0	270.1	-41.0	-51.7	30.1**	405.3	593.6	230.8	44.5	1.000091
34500.0	264.1	-42.5	-55.7	21.3**	398.6	591.9	230.9	45.9	1.000089
35000.0	258.2	-45.7	-60.9	12.6**	392.0	590.2	231.6	46.3	1.000087
35500.0	252.5	-45.0	-70.5	3.9**	385.6	588.4	233.8	44.7	1.000086
36000.0	246.8	-46.5			378.9	586.8	235.9	43.3	1.000084
36500.0	241.1	-47.5			372.1	585.2	236.4	44.2	1.000083
37000.0	235.5	-48.7			365.5	583.7	236.8	45.1	1.000081
37500.0	230.1	-49.9			359.0	582.1	236.5	46.1	1.000080
38000.0	224.8	-51.1			352.6	580.5	235.9	47.3	1.000079
38500.0	219.6	-52.3			346.3	579.0	236.1	48.0	1.000077
39000.0	214.5	-53.5			340.2	577.4	236.2	47.5	1.000076
39500.0	209.5	-54.7			334.2	575.8	240.3	47.2	1.000074
40000.0	204.7	-55.9			328.3	574.2	242.4	47.7	1.000073
40500.0	200.0	-57.1			322.5	572.6	244.3	48.5	1.000072
41000.0	195.2	-58.4			316.6	571.0	246.2	49.2	1.000071
41500.0	190.6	-59.6			310.9	569.3	248.1	49.4	1.000069
42000.0	186.0	-60.9			304.0	568.8	249.6	48.9	1.000068
42500.0	181.5	-60.1			296.9	568.6	249.1	53.4	1.000066
43000.0	177.2	-60.5			289.9	568.4	248.7	56.8	1.000065

\*\* AT LEAST ONE ASSUMED RELATIVE HUMIDITY VALUE WAS USED IN THE INTERPOLATION.

STATION ALTITUDE 3989.00 FEET MSL  
 28 SEP. 83  
 ASCENSION NO. 463

UPPER AIR DATA  
 2710020403  
 WHITE SANDS

GEODETTIC COORDINATES  
 32.40043 LAT DEG  
 106.37033 LON DEG

TABLE 5 Cont'd

GEOMETRIC ALTITUDE MSL FEET	PRESSURE MILLIBARS	AIR TEMPERATURE DEGREES CENTIGRADE	REL. HUM. PERCENT	DENSITY GM/CUBIC METER	SPEED OF SOUND KNOTS	WIND DIRECTION DEGREES (TN)	WIND SPEED KNOTS	INDEX OF REFRACTION
43500.0	172.9	-60.4		283.1	568.2	248.0	57.7	1.000063
44000.0	160.7	-60.9		276.9	567.6	247.2	58.4	1.000062
44500.0	164.6	-61.7		271.2	566.5	246.2	57.4	1.000060
45000.0	160.6	-62.5		265.7	565.4	244.9	54.3	1.000059
45500.0	150.7	-63.4		260.3	564.2	243.4	51.2	1.000058
46000.0	152.9	-64.2		255.0	563.1	240.6	48.1	1.000057
46500.0	149.2	-65.1		249.8	561.9	237.3	45.2	1.000056
47000.0	145.5	-66.2		244.9	560.5	235.1	42.1	1.000055
47500.0	141.9	-66.4		239.1	560.2	236.2	38.5	1.000053
48000.0	138.4	-66.2		233.0	560.4	237.4	34.9	1.000052
48500.0	135.0	-66.4		227.5	560.1	237.1	33.2	1.000051
49000.0	131.6	-67.6		223.0	558.6	236.4	32.0	1.000050
49500.0	128.5	-68.7		218.6	557.1	233.0	30.5	1.000049
50000.0	125.1	-69.8		214.4	555.5	224.4	28.8	1.000048
50500.0	122.0	-70.7		209.9	554.3	215.4	27.8	1.000047
51000.0	118.9	-71.0		204.9	553.9	213.4	23.7	1.000046
51500.0	115.9	-70.8		199.5	554.2	211.4	21.7	1.000044
52000.0	113.0	-70.5		194.3	554.5	212.8	21.6	1.000043
52500.0	110.1	-70.3		189.1	554.9	215.2	25.8	1.000042
53000.0	107.4	-70.0		184.1	555.3	216.0	26.2	1.000041
53500.0	104.7	-69.9		179.4	555.4	214.8	26.5	1.000040
54000.0	102.0	-70.8		175.6	554.2	213.6	26.9	1.000039
54500.0	99.9	-71.5		171.8	553.2	211.6	25.8	1.000038
55000.0	96.9	-72.0		167.9	552.5	209.4	24.7	1.000037
55500.0	94.5	-71.7		163.4	552.9	208.5	24.6	1.000036
56000.0	92.1	-70.1		158.1	555.1	208.1	24.7	1.000035
56500.0	89.8	-68.6		152.9	557.2	205.3	23.9	1.000034
57000.0	87.6	-67.0		148.0	559.3	199.7	22.3	1.000033
57500.0	85.4	-65.5		143.2	561.4	196.3	20.9	1.000032
58000.0	83.3	-65.2		139.5	561.8	200.2	19.7	1.000031
58500.0	81.2	-64.9		135.9	562.2	204.6	18.6	1.000030
59000.0	79.2	-64.6		132.4	562.6	212.4	17.1	1.000029
59500.0	77.5	-64.3		128.9	563.0	221.5	16.0	1.000029
60000.0	75.4	-63.9		125.5	563.6	224.8	13.9	1.000028
60500.0	73.6	-63.3		122.1	564.4	225.1	11.3	1.000027
61000.0	71.8	-62.6		118.8	565.2	226.4	9.3	1.000026
61500.0	70.1	-62.0		115.6	566.1	231.4	9.0	1.000026
62000.0	68.4	-61.1		112.3	567.3	235.8	10.6	1.000025
62500.0	66.7	-60.2		109.2	568.5	242.2	10.8	1.000024
63000.0	65.1	-59.3		106.1	569.7	249.8	10.9	1.000024

STATION ALTITUDE 3989.00 FFET MSL  
 28 SEP. 83 1544 MDT  
 ASCENSION NO. 463

UPPER AIR DATA  
 2710020463  
 WHITE SANDS

GEODETIC COORDINATES  
 32.40043 LAT DEG  
 106.37033 LON DEG

TABLE 5 Cont'd

GEOMETRIC ALTITUDE MSL FEET	PRESSURE MILLIBARS	TEMPERATURE AIR DEGREES	REL. HUM. PERCENT	DENSITY GM/CUBIC METER	SPEED OF SOUND KNOTS	WIND DATA		INDEX OF REFRACTION
						DIRECTION DEGREES(TN)	SPEED KNOTS	
63500.0	63.6	-58.4		103.1	570.9	256.7	11.1	1.000023
64000.0	62.1	-58.2		100.6	571.2	260.1	10.9	1.000022
64500.0	60.6	-58.0		98.1	571.4	263.7	10.7	1.000022
65000.0	59.2	-57.8		95.7	571.7	264.0	10.4	1.000021
65500.0	57.8	-57.6		93.4	572.0	262.7	9.9	1.000021
66000.0	56.4	-57.4		91.1	572.2	260.7	9.0	1.000020
66500.0	55.1	-57.2		88.8	572.5	256.3	7.1	1.000020
67000.0	53.8	-57.0		86.6	572.8	248.5	5.2	1.000019
67500.0	52.5	-56.8		84.5	573.0	218.4	4.7	1.000019
68000.0	51.2	-56.6		82.4	573.3	189.2	5.8	1.000018
68500.0	50.0	-56.4		80.4	573.5	181.4	7.4	1.000018
69000.0	48.9	-55.9		78.3	574.2	189.9	8.5	1.000017
69500.0	47.7	-55.4		76.3	574.9	196.3	9.8	1.000017
70000.0	46.6	-54.8		74.4	575.6	190.9	7.1	1.000017
70500.0	45.5	-54.3		72.5	576.3	175.0	4.1	1.000016
71000.0	44.5	-53.8		70.6	577.0	131.9	2.9	1.000016
71500.0	43.4	-53.2		68.8	577.7	98.3	4.1	1.000015
72000.0	42.4	-52.7		67.0	578.4	82.8	6.0	1.000015
72500.0	41.4	-52.6		65.4	578.5	80.8	6.4	1.000015
73000.0	40.5	-53.2		64.1	577.8	79.3	6.8	1.000014
73500.0	39.5	-53.8		62.8	577.0	73.4	7.8	1.000014
74000.0	38.6	-53.9		61.3	576.8	65.5	9.6	1.000014
74500.0	37.7	-53.9		59.9	576.9	60.3	11.6	1.000013
75000.0	36.8	-53.8		58.5	577.0	64.7	10.6	1.000013
75500.0	36.0	-53.7		57.1	577.1	70.1	9.6	1.000013
76000.0	35.1	-53.6		55.8	577.3	76.4	9.6	1.000012
76500.0	34.3	-53.5		54.4	577.4	81.8	11.2	1.000012
77000.0	33.5	-53.4		53.1	577.5	85.8	12.8	1.000012
77500.0	32.7	-53.3		51.9	577.6			1.000012
78000.0	32.0	-53.2		50.7	577.7			1.000011
78500.0	31.2	-53.2		49.5	577.8			1.000011
79000.0	30.5	-53.1		48.3	578.0			1.000011



STATION ALTITUDE 5989.00 FT-FET MSL  
 24 SEP. 83  
 ASCENSION NO. 463

MANDATORY LEVELS  
 2710020463  
 WHITE SANDS

GEODETTIC COORDINATES  
 32.40043 LAT DEG  
 106.37033 LON DEG

TABLE 6

PRESSURE GEOPOTENTIAL		TEMPERATURE		REL. HUM.	WIND DATA	
MILLIBARS	FEET	AIR DEGREES CENTIGRADE	DEWPOINT CENTIGRADE	PERCENT	DIRECTION DEGREES(TN)	SPEED KNOTS
850.0	4947.	18.9	12.4	66.	287.7	21.5
800.0	6657.	17.5	10.8	65.	291.4	13.7
750.0	8457.	13.3	9.5	78.	231.1	3.5
700.0	10352.	8.9	5.1	77.	222.8	6.9
650.0	12353.	4.5	.0	73.	216.8	9.6
600.0	14478.	.0	-5.6	66.	197.5	6.8
550.0	16750.	-4.8	-9.1	72.	183.0	12.9
500.0	19196.	-8.3	-19.7	39.	215.0	27.1
450.0	21851.	-14.2	-23.3	46.	215.6	34.1
400.0	24746.	-21.3	-27.0	60.	218.9	29.8
350.0	27960.	-26.0	-29.4	73.	237.9	25.1
300.0	31561.	-34.8	-39.8	60.	230.1	23.4
250.0	35643.	-45.6			234.7	44.0
200.0	40309.	-57.1			244.2	48.5
175.0	43141.	-60.4			248.4	57.3
150.0	46265.	-64.9			238.2	45.9
125.0	49878.	-69.8			224.4	28.8
100.0	54223.	-71.4			212.1	26.1
80.0	58614.	-64.7			208.7	17.7
70.0	61303.	-62.0			231.2	9.9
60.0	64469.	-57.9			264.8	10.7
50.0	68254.	-56.4			180.9	7.3
40.0	72951.	-53.5			78.7	7.0
30.0	79022.	-53.0				

\*\* AT LEAST ONE ASSUMED RELATIVE HUMIDITY VALUE WAS USED IN THE INTERPOLATION.

STATION ALTITUDE 3947.30 FT MSL  
 28 SEP. 83  
 ASCENSION NO. 210

SIGNIFICANT LEVELL DATA  
 2710060210  
 S M H

GEODETIC COORDINATES  
 32.48034 LAT DEG  
 106.42307 LON DEG

TABLE 7

PRESSURE MILLIBARS	GEOMETRIC ALTITUDE MSL FEET	TEMPERATURE		REL. HUM. PERCENT
		AIR DEGREES	DEWPOINT CENTIGRADE	
878.2	3097.3	22.8	15.4	63.0
877.1	4065.4	18.9	13.5	71.0
864.7	4468.5	19.5	13.4	68.0
860.8	4596.3	18.4	11.9	66.0
850.0	4952.5	18.2	11.5	65.0
828.1	5688.6	18.4	10.3	59.0
781.7	7304.0	14.6	7.2	61.0
763.9	7944.1	13.6	9.5	76.0
700.0	10340.7	8.7	5.1	78.0
671.5	11473.3	5.7	2.2	78.0
627.6	13283.2	2.4	-5.5	56.0
597.0	14604.1	-1.1	-6.2	68.0
588.9	14962.9	-1.0	-5.2	73.0
547.7	16852.2	-5.7	-5.8	92.0
520.2	18178.1	-7.4	-9.8	83.0
500.0	19190.6	-9.1	-11.6	82.0
492.2	19590.8	-9.5	-19.4	44.0
484.5	19991.2	-10.1	-22.0	37.0
468.7	20927.4	-13.1	-18.3	65.0
467.9	20970.2	-13.2	-10.2	78.0
454.4	21605.2	-12.8	-13.2	97.0
400.0	24771.4	-18.9	-20.5	87.0
344.1	28132.6	-26.0	-29.2	74.0
328.5	29503.3	-29.9	-34.8	62.0
300.0	31608.6	-35.4	-40.5	59.0
291.6	32257.3	-37.3	-42.3	59.0
278.8	33274.0	-39.4	-40.9	44.0
250.0	35701.6	-45.3		
236.4	36922.6	-48.5		
200.0	40471.0	-58.0		
186.2	41946.1	-60.8		
168.0	44052.3	-61.3		
150.0	46348.3	-65.4		
142.9	47314.4	-68.3		
138.7	47907.1	-66.6		
123.0	50277.9	-71.1		
115.6	51092.4	-70.0		
105.0	53302.3	-69.6		
100.0	54337.8	-71.4		
82.3	58183.0	-66.5		

VARIATION ALTITUDE 3997.30 FEET MSL  
 28 SEP. 63 1544 MDT  
 ASCENSION NO. 210

SIGNIFICANT LEVEL DATA  
 2710060210  
 S M N

GEODETTIC COORDINATES  
 32.48034 LAT DEG  
 106.42307 LON DEG

TABLE 7 Cont'd

PRESSURE MILLIBARS	GEOMETRIC ALTITUDE MSL FEET	TEMPERATURE AIR DEGREES CENTIGRADE	REL. HUM. PERCENT
76.1	59752.9	-65.2	
70.0	61451.8	-60.6	
61.5	64120.8	-59.4	
50.0	68426.4	-57.0	
40.8	72713.4	-53.7	
38.7	75831.8	-55.4	
33.6	76824.8	-53.5	

STATION ALTITUDE 3997.30 FEET MSL  
 28 SEP. 83  
 ASCENSION NO. 210  
 1544 MDT

UPPER AIR DATA  
 2710060210  
 S M K

GEODETIC COORDINATES  
 32.48034 LAT DEG  
 106.42307 LON DEG

TABLE 8

GEOMETRIC ALTITUDE MSL FEET	PRESSURE MILLIBARS	TEMPERATURE		REL. HUM. PERCENT	DENSITY GM/CUBIC METER	SPEED OF SOUND KNOTS	WIND DATA		INDEX OF REFRACTION
		AIR DEGREES	DEWPOINT CENTIGRADE				DIRECTION DEGREES(TIN)	SPEED KNOTS	
3997.3	879.2	22.8	15.4	63.0	1027.1	672.7	355.0	15.9	1.000305
4000.0	879.1	22.6	15.3	63.3	1027.6	672.6	334.9	15.9	1.000305
4500.0	863.7	19.2	13.1	67.5	1022.3	668.4	317.1	17.0	1.000295
5000.0	848.6	18.2	11.4	64.6	1008.5	667.0	302.6	19.5	1.000285
5500.0	833.7	18.3	10.6	60.5	990.5	667.1	291.9	22.9	1.000278
6000.0	818.9	17.7	9.7	59.4	975.6	663.2	286.4	23.6	1.000271
6500.0	804.5	16.5	8.7	60.0	962.4	664.8	287.1	16.6	1.000265
7000.0	790.2	15.3	7.8	60.6	949.5	663.3	288.2	9.8	1.000260
7500.0	776.2	14.3	7.9	65.6	935.8	662.2	289.5	3.2	1.000258
8000.0	762.3	13.5	9.4	76.0	921.1	661.5	105.7	2.6	1.000260
8500.0	748.6	12.5	8.4	76.5	908.0	660.2	109.4	3.5	1.000254
9000.0	735.1	11.4	7.5	76.9	895.0	659.0	111.6	4.5	1.000248
9500.0	721.9	10.4	6.6	77.3	882.3	657.7	120.5	4.4	1.000243
10000.0	708.9	9.4	5.7	77.7	869.7	656.5	131.1	4.3	1.000237
10500.0	696.1	8.3	4.7	78.0	857.6	655.1	146.5	5.0	1.000232
11000.0	683.3	7.0	3.4	78.0	846.2	653.4	158.1	6.1	1.000226
11500.0	670.8	5.7	2.1	77.7	834.9	651.8	160.1	6.8	1.000221
12000.0	658.4	4.7	1.1	71.6	822.5	650.6	161.2	7.5	1.000213
12500.0	646.2	3.8	-2.0	65.5	810.3	649.4	161.6	7.8	1.000207
13000.0	634.3	2.9	-4.2	59.4	798.2	648.2	161.9	8.0	1.000200
13500.0	622.5	1.8	-5.5	58.0	786.7	646.8	166.7	8.4	1.000196
14000.0	610.8	0.5	-5.8	62.5	775.7	645.2	172.8	9.4	1.000193
14500.0	599.4	-0.8	-6.2	67.1	764.8	643.7	180.5	12.5	1.000190
15000.0	588.1	-1.1	-5.2	73.5	751.0	643.4	184.5	15.4	1.000189
15500.0	576.9	-2.3	-5.2	80.4	740.1	642.0	186.4	17.9	1.000186
16000.0	565.4	-3.6	-5.4	87.3	729.3	640.5	187.8	20.5	1.000184
16500.0	555.2	-4.8	-5.6	94.2	718.8	639.0	192.9	21.8	1.000181
17000.0	544.6	-5.9	-6.3	97.2	707.9	637.7	198.8	22.9	1.000178
17500.0	534.1	-6.5	-7.7	91.2	696.2	636.9	208.0	24.7	1.000173
18000.0	523.8	-7.2	-9.2	85.1	684.6	636.1	215.5	27.2	1.000169
18500.0	513.7	-7.4	-10.4	82.7	673.4	635.1	217.2	29.6	1.000165
19000.0	503.7	-8.8	-11.3	82.2	662.5	634.0	218.7	31.8	1.000162
19500.0	494.0	-9.4	-17.3	52.6	651.7	633.1	220.3	33.8	1.000154
20000.0	484.3	-10.1	-21.9	37.3	641.0	632.1	221.3	36.1	1.000149
20500.0	474.8	-11.9	-19.3	54.0	632.6	630.0	221.8	38.8	1.000148
21000.0	465.5	-13.1	-15.6	81.4	622.7	628.7	219.4	43.7	1.000149
21500.0	456.3	-12.9	-13.6	94.3	609.8	629.1	218.9	42.8	1.000148
22000.0	447.2	-13.6	-14.1	95.8	599.1	628.2	226.4	37.1	1.000145
22500.0	438.3	-14.5	-15.2	94.2	589.5	627.0	237.6	25.6	1.000142
23000.0	429.6	-15.5	-16.4	92.6	579.9	625.8	240.2	25.7	1.000139

STATION ALTITUDE 3997.30 FEET MSL  
 28 SEP. 83  
 ASCENSION NO. 210

UPPER AIR DATA  
 2710060210  
 S M K

GEODETIC COORDINATES  
 32.48034 LAT DEG  
 106.42307 LON DEG

TABLE 8 Cont'd

GEOMETRIC ALTITUDE MSL FEET	PRESSURE MILLIBARS	TEMPERATURE AIR DEGREES CENTIGRADE	REL. HUM. PERCENT	DENSITY GM/CM <sup>3</sup> METER	SPEED OF SOUND KNOTS	WIND DATA		INDEX OF REFRACTION
						DIRECTION DEGREES (TN)	SPEED KNOTS	
23500.0	421.0	-16.5	91.0	570.6	624.6	242.5	25.4	1.000136
24000.0	412.6	-17.4	89.4	561.4	623.4	244.0	23.7	1.000133
24500.0	404.4	-18.4	87.9	552.3	622.2	245.7	21.9	1.000130
25000.0	396.2	-19.4	86.1	543.4	620.9	243.1	18.9	1.000128
25500.0	388.1	-20.4	84.2	534.5	619.6	239.5	15.9	1.000125
26000.0	380.2	-21.5	82.2	525.8	618.3	235.0	13.9	1.000123
26500.0	372.4	-22.6	80.3	517.3	617.0	229.5	12.4	1.000120
27000.0	364.8	-23.6	78.4	508.9	615.6	226.0	11.0	1.000118
27500.0	357.3	-24.7	76.4	500.6	614.3	225.4	9.8	1.000115
28000.0	350.0	-25.7	74.5	492.5	613.0	226.9	10.5	1.000113
28500.0	342.7	-27.0	70.8	484.9	611.3	229.2	12.7	1.000111
29000.0	335.6	-28.5	66.4	477.6	609.5	230.6	16.4	1.000109
29500.0	328.5	-29.9	62.0	470.3	607.7	231.3	20.9	1.000107
30000.0	321.5	-31.2	61.3	462.8	606.1	230.7	21.9	1.000105
30500.0	314.7	-32.5	60.6	455.4	604.4	229.9	23.3	1.000103
31000.0	308.0	-33.8	59.9	448.2	602.8	230.0	25.2	1.000101
31500.0	301.4	-35.1	59.2	441.0	601.1	230.4	24.7	1.000099
32000.0	294.9	-36.5	59.0	434.1	599.3	231.7	28.6	1.000098
32500.0	288.5	-37.8	55.4	427.0	597.7	232.7	32.2	1.000096
33000.0	282.2	-38.8	48.0	419.5	596.4	233.5	35.1	1.000094
33500.0	275.0	-39.9	39.9**	412.2	595.0	234.2	38.0	1.000092
34000.0	267.9	-41.2	30.8**	405.2	593.4	234.7	40.1	1.000091
34500.0	261.4	-42.4	21.8**	398.3	591.8	235.3	41.0	1.000089
35000.0	254.5	-43.6	12.7**	391.5	590.3	235.8	41.7	1.000087
35500.0	252.5	-44.8	3.7**	384.9	588.7	236.3	42.6	1.000086
36000.0	245.6	-46.1		378.3	587.0	236.7	44.0	1.000084
36500.0	241.0	-47.4		371.9	585.4	236.0	44.5	1.000083
37000.0	235.5	-48.7		365.6	583.6	235.2	44.0	1.000081
37500.0	230.1	-50.0		359.2	581.9	234.1	42.1	1.000080
38000.0	224.7	-51.4		353.0	580.2	235.9	41.0	1.000079
38500.0	219.5	-52.7		346.8	578.4	239.0	40.4	1.000077
39000.0	214.4	-54.1		340.8	576.6	243.4	41.5	1.000076
39500.0	209.4	-55.4		334.9	574.9	247.2	43.2	1.000075
40000.0	204.5	-56.7		329.2	573.1	248.7	46.2	1.000073
40500.0	199.7	-58.1		323.5	571.4	249.4	49.7	1.000072
41000.0	194.9	-59.0		317.1	570.1	248.8	54.5	1.000071
41500.0	190.3	-60.0		310.9	568.8	248.9	57.3	1.000069
42000.0	185.7	-60.8		304.7	567.7	248.9	58.4	1.000068
42500.0	181.2	-60.9		297.5	567.5	250.6	58.8	1.000066
43000.0	176.9	-61.1		290.5	567.4	251.3	60.3	1.000065

\*\* AT LEAST ONE ASSUMED RELATIVE HUMIDITY VALUE WAS USED IN THE INTERPOLATION.

STATION ALTITUDE 3997.30 FEET MSL  
 28 SEP. 83  
 ASCENSION NO. 210

UPPER AIR DATA  
 2710060210  
 S M K

GEODETIC COORDINATES  
 32.48034 LAT DEG  
 106.42307 LON DEG

TABLE 8 Cont'd

GEOMETRIC ALTITUDE MSL FEET	PRESSURE MILLIBARS	TEMPERATURE AIR DEGREES CENTIGRADE	REL.HUM. PERCENT	DENSITY GM/CUBIC METER	SPEED OF SOUND KNOTS	WIND DATA		INDEX OF REFRACTION
						DIRECTION DEGREES(TN)	SPEED KNOTS	
43500.0	172.6	-61.2	283.6	567.2	251.0	251.0	63.0	1.000063
44000.0	160.4	-61.3	276.9	567.1	250.0	250.0	62.1	1.000062
44500.0	164.3	-62.1	271.2	566.0	248.9	248.9	61.0	1.000060
45000.0	160.3	-63.0	265.8	564.8	247.2	247.2	57.7	1.000059
45500.0	156.4	-63.9	260.4	563.6	245.0	245.0	54.7	1.000058
46000.0	152.6	-64.8	255.1	562.4	240.6	240.6	53.3	1.000057
46500.0	148.9	-65.9	250.2	560.9	236.8	236.8	53.2	1.000056
47000.0	145.2	-67.4	245.7	558.9	235.8	235.8	56.0	1.000055
47500.0	141.6	-67.8	240.1	558.3	235.4	235.4	55.7	1.000053
48000.0	138.0	-66.8	233.0	559.7	235.6	235.6	51.9	1.000052
48500.0	134.6	-67.7	228.2	558.4	234.5	234.5	43.8	1.000051
49000.0	131.2	-68.7	223.6	557.1	232.0	232.0	33.9	1.000050
49500.0	127.9	-69.6	219.0	555.8	225.2	225.2	28.0	1.000049
50000.0	124.7	-70.6	214.5	554.5	216.2	216.2	26.7	1.000048
50500.0	121.6	-70.9	209.5	554.0	210.0	210.0	29.2	1.000047
51000.0	118.5	-70.4	203.7	554.7	211.5	211.5	30.2	1.000045
51500.0	115.6	-70.0	198.2	555.3	214.4	214.4	30.7	1.000044
52000.0	112.7	-69.9	193.1	555.4	214.7	214.7	29.4	1.000043
52500.0	109.8	-69.8	188.1	555.6	211.0	211.0	26.0	1.000042
53000.0	107.1	-69.7	183.3	555.7	209.1	209.1	24.2	1.000041
53500.0	104.4	-69.8	178.8	555.5	208.1	208.1	23.3	1.000040
54000.0	101.7	-70.8	175.1	554.2	211.2	211.2	25.7	1.000039
54500.0	99.2	-71.2	171.1	553.6	212.4	212.4	26.7	1.000038
55000.0	96.7	-70.6	166.3	554.5	211.8	211.8	25.7	1.000037
55500.0	94.3	-69.9	161.6	555.4	210.6	210.6	24.0	1.000036
56000.0	91.9	-69.3	157.1	556.3	206.8	206.8	22.0	1.000035
56500.0	89.6	-68.6	152.7	557.1	206.8	206.8	20.3	1.000034
57000.0	87.4	-68.0	148.4	558.0	204.9	204.9	19.2	1.000033
57500.0	85.2	-67.4	144.2	558.9	203.6	203.6	18.6	1.000032
58000.0	83.1	-66.7	140.2	559.7	205.0	205.0	18.2	1.000031
58500.0	81.0	-66.2	136.4	560.4	208.1	208.1	17.1	1.000030
59000.0	79.0	-65.8	132.8	560.9	216.1	216.1	15.0	1.000030
59500.0	77.1	-65.4	129.2	561.5	228.6	228.6	13.7	1.000029
60000.0	75.2	-64.5	125.5	562.7	244.2	244.2	13.4	1.000028
60500.0	73.4	-63.2	121.7	564.5	252.0	252.0	14.2	1.000027
61000.0	71.6	-61.8	118.0	566.3	256.3	256.3	15.0	1.000026
61500.0	69.8	-60.6	114.4	568.0	250.7	250.7	13.6	1.000025
62000.0	68.2	-60.4	111.6	568.3	242.3	242.3	12.3	1.000025
62500.0	66.5	-60.1	108.8	568.6	229.4	229.4	11.2	1.000024
63000.0	64.9	-59.9	106.1	568.9	223.9	223.9	10.7	1.000024

UPPER AIR DATA  
 2710060210  
 S M K

STATION ALTITUDE 3997.30 FT FET MSL  
 28 SEP. 63  
 ACQUISITION NO. 210

GEOMETRIC COORDINATES  
 32.41134 LAT DEG  
 106.42307 LON DEG

TABLE 8 Cont'd

GEOMETRIC ALTITUDE MSL FEET	PRESSURE MILLIBARS	TEMPERATURE AIR DEGREES DEWPOINT CENTIGRADE	REL. HUM. PERCENT	DENSITY GM/CUBIC METER	SPEED OF SOUND KNOTS	WIND DATA DIRECTION DEGREES(TN)	SPEED KNOTS	INJFX OF REFRACTION
63500.0	63.4	-59.7	103.4	569.2	223.5	10.3	1.000023	
64000.0	61.9	-59.5	100.8	569.5	237.0	9.4	1.000022	
64500.0	60.4	-59.2	98.3	569.9	253.5	9.3	1.000022	
65000.0	59.0	-58.9	95.9	570.2	259.0	9.5	1.000021	
65500.0	57.6	-58.6	93.5	570.6	265.2	9.1	1.000021	
66000.0	56.2	-58.4	91.1	571.0	278.0	6.9	1.000020	
66500.0	54.9	-58.1	88.8	571.3	296.0	4.6	1.000020	
67000.0	53.5	-57.8	86.6	571.7	340.0	2.4	1.000019	
67500.0	52.3	-57.5	84.5	572.1	316.3	.5	1.000019	
68000.0	51.0	-57.2	82.3	572.4	286.7	3.0	1.000018	
68500.0	49.8	-56.9	80.3	572.8	207.7	3.9	1.000018	
69000.0	48.7	-56.6	78.3	573.3	209.9	4.2	1.000017	
69500.0	47.5	-56.2	76.3	573.9	194.7	5.3	1.000017	
70000.0	46.4	-55.8	74.4	574.4	184.8	6.6	1.000017	
70500.0	45.3	-55.4	72.5	574.9	194.9	8.0	1.000016	
71000.0	44.3	-55.0	70.7	575.4	239.9	1.3	1.000016	
71500.0	43.2	-54.6	68.9	575.9	25.1	4.0	1.000015	
72000.0	42.2	-54.2	67.2	576.4	36.0	8.0	1.000015	
72500.0	41.2	-53.9	65.5	576.9	77.7	8.7	1.000015	
73000.0	40.3	-54.1	64.0	576.5	102.4	11.3	1.000014	
73500.0	39.3	-54.9	62.7	575.5	116.6	13.7	1.000014	
74000.0	38.4	-55.3	61.4	575.0	120.6	14.4	1.000014	
74500.0	37.5	-55.0	59.9	575.4	105.3	11.4	1.000013	
75000.0	36.6	-54.7	58.4	575.9	88.0	10.0	1.000013	
75500.0	35.8	-54.3	56.9	576.3	77.1	9.7	1.000013	
76000.0	34.9	-54.0	55.5	576.7			1.000012	
76500.0	34.1	-53.7	54.2	577.1			1.000012	

STATION ALTITUDE 3997.30 FEET MSL  
 28 SEP. 83 1544 MDT  
 ASCENSION NO. 210

MANDATORY LEVELS  
 2710060210  
 S M K

GEODETIC COORDINATES  
 32.48034 LAT UEG  
 106.42307 LON UEG

TABLE 9

PRESSURE GEOPOTENTIAL		TEMPERATURE		REL. HUM.	WIND DATA		
MILLIBARS	FEET	AIP DEGREES	DEWPOINT CENTIGRADE	PERCENT	DIRECTION DEGREES (TN)	SPEED KNOTS	
850.0	4949.	18.2	11.5	65.	303.9	19.2	
800.0	6653.	16.1	8.4	60.	287.4	14.5	
750.0	8445.	12.6	8.5	76.	109.1	3.4	
700.0	10337.	8.7	5.1	78.	141.9	4.7	
650.0	12334.	4.1	-1.4	67.	161.5	7.7	
600.0	14455.	-7	-6.1	67.	180.1	12.2	
550.0	16722.	-5.4	-5.8	97.	195.8	22.3	
500.0	19164.	-9.1	-11.6	82.	219.3	32.6	
450.0	21816.	-13.3	-13.7	96.	223.4	35.3	
400.0	24730.	-18.9	-20.5	87.	244.4	20.4	
350.0	27952.	-25.7	-28.9	75.	228.8	10.5	
300.0	31545.	-35.4	-40.5	59.	230.7	25.5	
250.0	35623.	-45.3			238.5	43.2	
200.0	40373.	-58.0			249.5	49.2	
175.0	43106.	-61.1			251.2	61.4	
150.0	46223.	-65.4			237.6	52.6	
125.0	49819.	-70.5			217.3	26.4	
100.0	54170.	-71.4			212.7	27.0	
80.0	58556.	-66.0			211.4	16.2	
70.0	61241.	-60.6			251.7	13.8	
60.0	64400.	-59.1			254.6	9.3	
50.0	68169.	-57.0			207.2	3.8	
40.0	72842.	-54.3			105.4	12.1	

\*\* AT LEAST ONE ASSUMED RELATIVE HUMIDITY VALUE WAS USED IN THE INTERPOLATION.



END

FILMED

11-83

DTIC