

AD-A133 073

CHARACTERISTICS OF THE CLASS OF 1987(U) MILITARY
ACADEMY WEST POINT NY OFFICE OF THE DIRECTOR OF
INSTITUTIONAL RESEARCH ■ H SAUNDERS AUG 83

1/1

UNCLASSIFIED

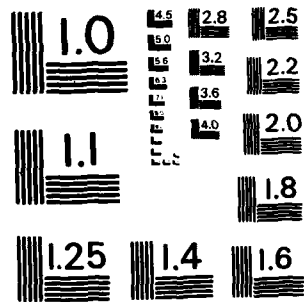
USMA-OIR-83-004

F/G 5/9

NL



END
DATE
FILMED
10 83
DT



MICROCOPY RESOLUTION TEST CHART
NATIONAL BUREAU OF STANDARDS-1963-A

12

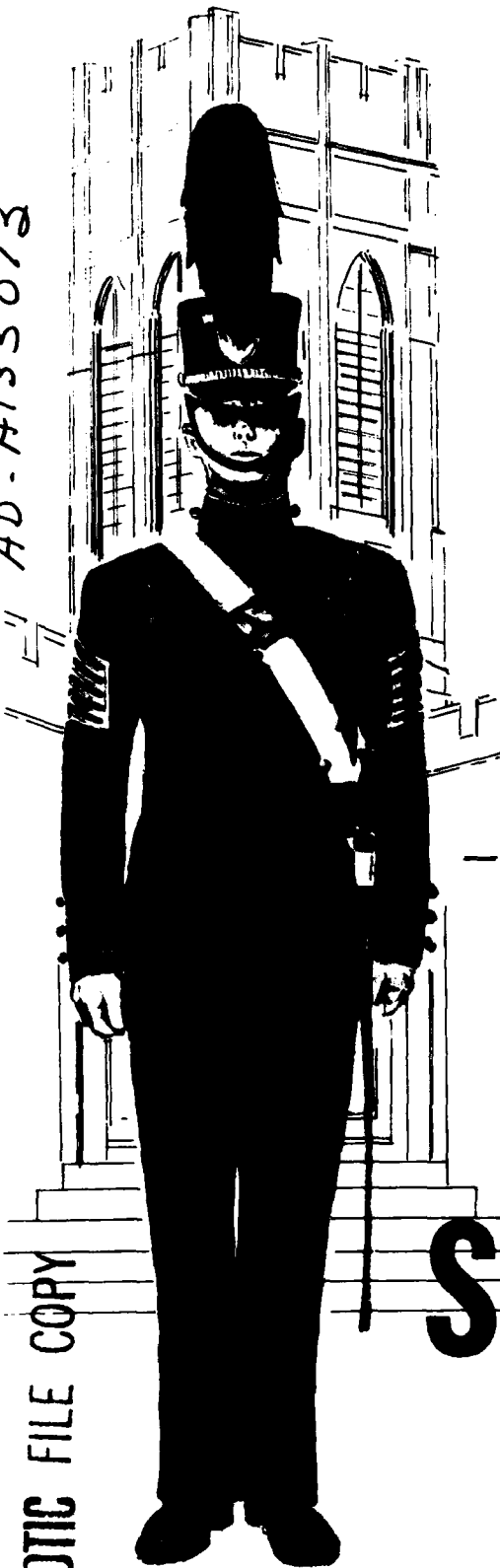
83-004

UNITED STATES MILITARY ACADEMY

WEST POINT, NEW YORK

CHARACTERISTICS OF THE CLASS OF 1987

AD-A133073



DTIC FILE COPY

DTIC ELECTE
SEP 29 1983

S D

B

DISTRIBUTION STATEMENT A

Approved for public release
Distribution Unlimited

OFFICE OF INSTITUTIONAL RESEARCH
AUGUST 1983

DUTY-HONOR-COUNTRY

83 09 19 110

Characteristics of the Class of 1987

Report No. : USMA-OIR-83-004
Project No. : 472
Prepared by : Ms. Mary H. Saunders
Programmers : Data Support Branch
Typist : Mrs. Carol A. Durham
August 1983

Abstract

This report presents the biographical characteristics and achievements of the 1,435 new cadets who entered the United States Military Academy in the Class of 1987.

NOTE: Any conclusions in this report are not to be construed as official U.S. Military Academy or Department of the Army positions unless so designated by other authorized documents.

OFFICE OF INSTITUTIONAL RESEARCH
UNITED STATES MILITARY ACADEMY
WEST POINT, NEW YORK 10996

Table of Contents

		Page
	Preface	1
Table		
1	Distribution of Scores on Academic Qualification Measures (Admitted by CEER)	2
2	Distribution of Scores on Academic Qualifications Measures (Admitted by ACEER).	3
3	Distribution of ACEER Scores (Admitted by ACT Scores).	3
4	Distribution of Scores on PAE, LPS and HSR (All Admitted Cadets) .	4
5	Distribution of Whole Candidate Scores (All Admitted Cadets) . . .	5
6	Means and Standard Deviations of Scores of Male and Female Cadets	6
7	Distribution of Height and Weight	7
8	High School Characteristics.	8
9	Awards and Scholarships	8
10	Scholarships	9
11	Clubs and Positions Held or Awards Obtained	10
12	Nominations and Appointments	11
13	Father's Military Status and Rank	12
14	Class Year of Fathers Who are USMA Graduates	13
15	Sport Participation.	13
16	Miscellaneous	14
	Report Documentation Page (DD Form 1473)	15

Preface

This report presents the biographical characteristics and achievements of the 1,435 new cadets who entered the Class of 1987. The admission scores listed in Table 1 are for the 986 cadets whose admission was based on the CEER, while Tables 2 and 3 are for the 449 cadets whose admission was based on American College Test scores. The following abbreviations, explanations and definitions of terms apply in this report.

- CEER** A statistically derived weighted composite score of two College Entrance Examination Board Tests (Scholastic Aptitude Test-Verbal, Scholastic Aptitude Test-Mathematics, and a standardized high school rank score.
- High School Rank** This is a score derived by converting the actual high school rank to a standard score, using a formula developed by the Educational Testing Service.
- Whole Candidate Score** This is a weighted composite score of the CEER or ACEER, the Physical Aptitude Examination score and the Leadership Potential Score.
- Physical Aptitude Examination Score** This is a standardized score developed to measure physical capabilities.
- Leadership Potential Score** This is a score derived from the ratings of the candidate by his/her secondary school teachers and evaluations by admissions officials of his/her type of participation in athletic and other school and community activities.
- ACT** American College Testing Program.
- ACEER** A statistically derived weighted composite score of ACT tests and high school rank converted to the 200-800 range of the CEER.

Accession For	
NTIS GRAM	<input checked="" type="checkbox"/>
DTIC TAB	<input type="checkbox"/>
Unannounced	<input type="checkbox"/>
Justification	<input type="checkbox"/>
By _____	
Distribution/	
Availability Codes	
Dist	Avail and/or Special
A	



Table 1
 Distribution of Scores on Academic Qualification Measures
 (For those admitted by use of CEER)

Score Ranges	Scholastic Aptitude Verbal		Scholastic Aptitude Mathematics		CEER	
	N	Cum %	N	Cum %	N	Cum %
750-800	6	100%	40	100%	4	100%
700-749	21	99	153	96	52	99
650-699	87	97	246	80	155	94
600-649	181	88	262	55	324	79
550-599	241	70	204	29	263	46
500-549	276	46	74	8	163	19
450-499	142	18	5	1	23	2
400-449	27	3	1	0	1	0
350-399	4	0	0	0	0	0
Total	986		986		986	
Mean	559		636		605	
S.D.	69		64		58	

Table 2
 Distribution of Scores on Academic Qualification Measures
 (For those admitted by use of ACEER)

Score Ranges	ACT-ENG		ACT-MATH		ACT-N.S.		ACT-S.S	
	N	Cum %	N	Cum %	N	Cum %	N	Cum %
34-36	0	100%	46	100%	26	100%	4	100%
31-33	6	100	99	90	176	94	63	99
28-30	32	99	156	68	125	55	116	85
25-27	101	92	119	33	70	27	103	59
22-24	205	69	28	6	39	12	95	36
19-21	89	23	1	0	10	3	40	15
16-18	14	4	0	0	2	1	10	6
13-15	2	0	0	0	1	0	12	4
10-12	0	0	0	0	0	0	1	1
Total	449		449		449		449	
Mean	23.5		29.1		29.2		25.8	
S.D.	2.9		3.2		3.5		5.1	

Table 3
 Distribution of ACEER Scores
 (For those admitted by use of ACT scores)

Score Ranges	ACEER	
	N	Cum %
750-800	0	100%
700-749	24	100
650-699	60	95
600-649	140	81
550-599	137	50
500-549	79	20
450-499	7	2
400-449	2	0
Total	449	
Mean	600	
S.D.	58	

Table 4

Distribution of Scores on PAE, LPS and HSR
(For all admitted cadets)

Score Ranges	Physical Aptitude* (PAE)				Leadership Potential (LPS)		High School Rank (HSR)	
	Male		Female		N	Cum %	N	Cum %
	N	%	N	%				
750-800	19	100%	2	100%	3	100%	102	100%
700-749	55	98	7	99	82	100	103	93
650-699	121	94	6	95	323	94	225	86
600-649	202	84	17	92	394	72	251	70
550-599	303	68	34	82	367	44	255	52
500-549	283	44	31	63	197	18	247	35
450-499	206	22	32	45	55	5	115	18
400-449	64	5	45	27	12	1	92	10
350-399	0	0	3	2	1	0	33	3
300-349	1	0	0	0	1	0	9	1
250-299	1	0	0	0	0	0	2	0
200-249	0	0	0	0	0	0	1	0
Total	1258		177		1435		1435	
Mean	567		523		608		583	
S.D.	79		88		63		104	

*Distribution of PAE scores are shown separately for male and female cadets as they are scored on different events.

Table 5
 Distribution of Whole Candidate Scores
 (For all admitted cadets)

<u>Score Ranges</u>	<u>N</u>	<u>Cum %</u>
7000-7249	4	100%
6750-6999	24	100
6500-6749	97	98
6250-6499	242	91
6000-6249	411	74
5750-5999	324	46
5500-5749	207	23
5250-5499	92	9
5000-5249	32	2
4750-4999	1	0
4500-4749	1	0
Total	1435	
Mean	6013	
S.D.	367	

Table 6
Means and Standard Deviations of Scores
of Male and Female Cadets

	WCS		HSR		LPS		PAE*	
	<u>Male</u>	<u>Female</u>	<u>Male</u>	<u>Female</u>	<u>Male</u>	<u>Female</u>	<u>Male</u>	<u>Female</u>
N	1258	177	1258	177	1258	177	1258	177
Mean	6019	5968	578	616	608	604	567	523
S.D.	364	390	104	94	62	69	79	88

	ACEER		CEER		SAT-V		SAT-M	
	<u>Male</u>	<u>Female</u>	<u>Male</u>	<u>Female</u>	<u>Male</u>	<u>Female</u>	<u>Male</u>	<u>Female</u>
N	381	68	877	109	877	109	877	109
Mean	600	598	605	606	557	572	639	607
S.D.	55	63	58	52	70	58	63	60

	ACT-EN		ACT-MA		ACT-NS		ACT-SS	
	<u>Male</u>	<u>Female</u>	<u>Male</u>	<u>Female</u>	<u>Male</u>	<u>Female</u>	<u>Male</u>	<u>Female</u>
N	381	68	381	68	381	68	381	68
Mean	23.4	24.0	29.2	28.1	29.5	27.9	25.9	25.3
S.D.	2.8	3.3	3.2	3.4	3.3	4.1	5.2	4.7

*PAE scale for females is not the same as the scale for males.

Table 7-1

Distribution of Height and Weight
(Female Cadets)

Height			Weight		
<u>Inches</u>	<u>No.</u>	<u>%</u>	<u>Pounds</u>	<u>No.</u>	<u>%</u>
72-73	1	0.6%	191-200	1	0.6%
70-71	13	7.3	171-180	0	.0
68-69	30	16.9	161-170	4	2.3
66-67	47	26.6	151-160	4	2.3
64-65	47	26.6	141-150	33	18.6
62-63	33	18.6	131-140	37	20.9
60-61	5	2.8	121-130	45	25.4
58-59	1	0.6	111-120	38	21.5
			101-110	13	7.3
			90-100	2	1.1
Total	177	100	Total	177	100
Mean	65.1		Mean	129.8	
S.D.	2.6		S.D.	15.1	

Table 7-2

Distribution of Height and Weight
(Male Cadets)

Height			Weight		
<u>Inches</u>	<u>No.</u>	<u>%</u>	<u>Pounds</u>	<u>No.</u>	<u>%</u>
80-81	1	0.1%	271-280	1	0.1%
78-79	4	0.3	261-270	0	.0
76-77	27	2.2	251-260	0	.0
74-75	117	9.3	241-250	0	.0
72-73	277	22.1	231-240	3	0.2
70-71	359	28.6	221-230	10	0.8
68-69	281	22.4	211-220	18	1.4
66-67	142	11.3	201-210	26	2.1
64-65	37	2.9	191-200	52	4.2
62-63	7	0.6	181-190	91	7.3
60-61	3	0.2	171-180	146	11.7
			161-170	191	15.2
			151-160	229	18.3
			141-150	240	19.2
			131-140	156	12.5
			121-130	66	5.3
			111-120	17	1.4
			101-110	6	0.5
			90-100	1	0.1
Total	1257	100	Total	1257	100
Mean	69.4		Mean	159.6	
S.D.	2.8		S.D.	22.4	

Table 8

High School Characteristics

	Number	Percent
Type of High School attended in Senior Year		
Public (Include HS in Foreign Country).....	1174	82%
Private (Non-Military).....	199	14
Private (Military).....	27	2
Rank in Graduating Class		
Top 20%.....	1219	85%
Second 20%.....	151	11
Middle 20%.....	46	3
Fourth 20%.....	6	1
Bottom 20%.....	2	0
Selected as Valedictorian (First in the Class).....	119	8
Selected as Salutatorian (Second in the Class).....	93	6
Number of High Schools Attended		
One.....	1159	81%
Two.....	206	14
Three.....	49	3
Four or more.....	15	1

Table 9

Awards and Scholarships

	Number	Percent
Received Following Awards		
National Honor Society.....	899	63%
Bausch and Lomb Science Award.....	56	4
American Legion Award.....	138	10
Boy's State or Girl's State Delegate.....	346	24
Took the National Merit/Achievement Scholarship Examination		
Yes, and Received Commendation.....	259	18%
Yes, was Semi-Finalist.....	43	3
Yes, was Finalist.....	35	2
Yes, was Merit Scholar.....	26	2

Table 10
Scholarships

Number of Academic Scholarships	Number	Percent
None.....	770	54%
One.....	320	22
Two or Three.....	254	18
Four or Five.....	63	4
Six or More.....	21	2
 Number of Athletic Scholarships		
None.....	1293	90%
One.....	80	6
Two or Three.....	31	2
Four or Five.....	12	1
Six or More.....	12	1
 Received the Following Military Scholarships*		
Army ROTC Scholarship.....	251	18%
Navy ROTC Scholarship.....	183	13
Air Force ROTC Scholarship.....	141	10
Other ROTC Scholarship.....	52	4

*May be more than one.

Table 11

Clubs and Positions Held or Awards Obtained

	Number	Percent
Elected or Appointed to Following High School Positions*		
President of High School Senior Class.....	89	6%
Senior Class Officer (Other Than President).....	224	16
President, Student Body.....	70	5
President, High School Class (Other than Senior Class)....	151	11
President, Student Council.....	97	7
Participated in or Held Following High School Positions*		
Debating or Forensic Society.....	170	12%
Thespian or Dramatic Club.....	237	17
Glee Club.....	101	7
High School Band.....	291	20
Staff, School Paper.....	267	19
Editor or Co-Editor, School Paper.....	105	7
Staff, Yearbook or Annual.....	234	16
Editor or Co-Editor, Yearbook or Annual.....	91	6
Presently is or has Been One of the Following*		
Boy Scout/Girl Scout.....	629	44%
Explorer Scout.....	132	9
Sea Scout.....	10	1
Air Scout.....	10	1
Campfire Girl.....	17	1
Camp Counselor.....	160	11
Order of the Arrow.....	139	10
Eagle Scout (Boys).....	111	9
First Class Scout (Girls).....	9	5

*May be more than one.

Table 12
Nominations and Appointments

	Number	Percent
Federal Academies Where Nomination was Attempted*		
Naval Academy.....	431	30%
Air Force Academy.....	431	30
Coast Guard Academy.....	156	11
Merchant Marine Academy.....	77	5
Federal Academies Where Appointment was Received*		
Naval Academy.....	95	7
Air Force Academy.....	80	6
Coast Guard Academy.....	56	4
Merchant Marine Academy.....	57	4
First Choice of Schools was		
US Military Academy.....	1229	86
US Air Force Academy.....	91	6
US Naval Academy.....	33	2
US Coast Guard Academy.....	1	0
US Merchant Marine Academy.....	2	0
A Civilian Liberal Arts College.....	27	2
A Civilian Engineering Technical College.....	26	2
Another Type of College.....	15	1

*May be more than one.

Table 13

Father's Military Status and Rank

Father's Past Military Service and Current Status	Number	Percent
No Military Service or Don't Know.....	512	36%
Career in Military Service Terminated for Physical Disability.....	22	2
Served 20 Years or More and Retired.....	135	9
Now on Full Time Active Duty.....	100	7
Served at One Time but No Longer In Service.....	622	44
Now in Reserves or National Guard.....	32	2
Died While on Active Duty.....	3	0
Father's Highest Grade**		
E1 - E3 (Private or PFC).....	124	9
E4 - E6 (Corporal Through Staff Sergeant).....	220	15
E7 - E9 (Platoon Sergeant Through Sergeant Major).....	93	6
Warrant Officer.....	18	1
Lieutenant or Captain.....	70	5
Major.....	36	2
Lieutenant Colonel.....	64	4
Colonel.....	55	4
General Officer.....	8	1

**Army grade or AF, Navy and Marine Corps equivalent.

Table 14

Class Year of Fathers Who Are USMA Graduates

<u>Year</u>	<u>No.</u>	
1965	1	
1964	2	
1963	2	
1962	2	
1961	4	
1960	5	
1959	7	
1958	2	
1957	5	
1956	1	
1954	3	
1953	2	
1950	2	
1946	1	
1945	1	Total 40

Table 15

Sport Participation

	<u>Number</u>	<u>Percent</u>
Participated in Varsity Athletics.....	1309	92%
Earned Varsity Letter.....	1237	87
Varsity Team Captain.....	690	48

Table 16
Miscellaneous

	<u>Number</u>	<u>Percent</u>
Taken College Level Courses After High School in One of the Following		
A Junior, Community, Extension or Branch College With a One or Two-Year Program Only.....	55	4%
Other Institution With Less Than a Four-Year Program.....	3	0
A Four-Year College, Not Part of a University.....	24	2
A University, Including its Separate Colleges.....	74	5
Not Applicable.....	1256	88
Attended U.S. Military Academy Preparatory School.....	173	12

SECURITY CLASSIFICATION OF THIS PAGE (When Data Entered)

REPORT DOCUMENTATION PAGE		READ INSTRUCTIONS BEFORE COMPLETING FORM
1. REPORT NUMBER 83-004	2. GOVT ACCESSION NO. AD-P133073	3. RECIPIENT'S CATALOG NUMBER
4. TITLE (and Subtitle) Characteristics of the Class of 1987	5. TYPE OF REPORT & PERIOD COVERED	
	6. PERFORMING ORG. REPORT NUMBER	
7. AUTHOR(s) Ms. Mary Saunders	8. CONTRACT OR GRANT NUMBER(s)	
9. PERFORMING ORGANIZATION NAME AND ADDRESS Office of Institutional Research United States Military Academy West Point, New York 10996	10. PROGRAM ELEMENT, PROJECT, TASK AREA & WORK UNIT NUMBERS Project No. 472	
11. CONTROLLING OFFICE NAME AND ADDRESS Same as #9 above.	12. REPORT DATE August 1983	
	13. NUMBER OF PAGES	
14. MONITORING AGENCY NAME & ADDRESS (if different from Controlling Office) United States Military Academy West Point, New York, 10996	15. SECURITY CLASS. (of this report) Unclassified	
	15a. DECLASSIFICATION/DOWNGRADING SCHEDULE	
16. DISTRIBUTION STATEMENT (of this Report) Approved for public release; distribution unlimited.		
17. DISTRIBUTION STATEMENT (of the abstract entered in Block 20, if different from Report)		
18. SUPPLEMENTARY NOTES		
19. KEY WORDS (Continue on reverse side if necessary and identify by block number) Achievements Freshmen Admission Scores Class of 1987 Analysis Characteristics		
20. ABSTRACT (Continue on reverse side if necessary and identify by block number) This report presents the biographical characteristics and achievements of the 1,453 new cadets who entered the United States Military Academy in the Class of 1987.		

DD FORM 1 JAN 78 1473 EDITION OF 1 NOV 68 IS OBSOLETE

UNCLASSIFIED
SECURITY CLASSIFICATION OF THIS PAGE (When Data Entered)