

AD-A133 060

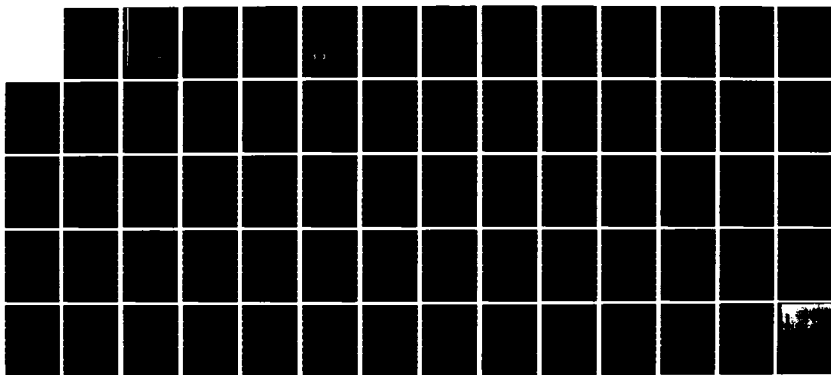
A GUIDE TO OCEANIC SEDIMENTARY LAYERING(U) TEXAS UNIV
AT AUSTIN APPLIED RESEARCH LABS C B BENNETT ET AL.
28 JUL 83 ARL-TR-83-25 N00014-78-C-0113

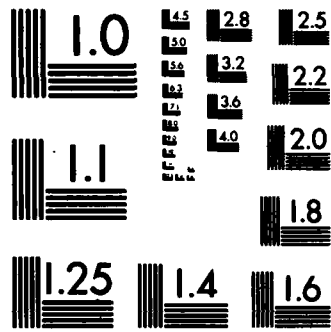
1/1

UNCLASSIFIED

F/G 8/10

NL





MICROCOPY RESOLUTION TEST CHART
NATIONAL BUREAU OF STANDARDS-1963-A

AD-A133060

12

ARL-TR-83-25

Copy No. 39

A GUIDE TO OCEANIC SEDIMENTARY LAYERING

Christopher B. Bennett
J. Mark Daniels

APPLIED RESEARCH LABORATORIES
THE UNIVERSITY OF TEXAS AT AUSTIN
POST OFFICE BOX 8029, AUSTIN, TEXAS 78712-8029

28 July 1983

Technical Report

Approved for public release;
distribution unlimited.

Prepared for:

**NAVAL OCEAN RESEARCH
AND DEVELOPMENT ACTIVITY
NSTL STATION, MS 39529**



DTIC FILE COPY

DTIC
ELECTE
SEP 29 1983
B

UNCLASSIFIED

SECURITY CLASSIFICATION OF THIS PAGE (When Data Entered)

REPORT DOCUMENTATION PAGE		READ INSTRUCTIONS BEFORE COMPLETING FORM	
1. REPORT NUMBER	2. GOVT ACCESSION NO.	3. RECIPIENT'S CATALOG NUMBER	
	AD-A133060		
4. TITLE (and Subtitle)		5. TYPE OF REPORT & PERIOD COVERED	
A GUIDE TO OCEANIC SEDIMENTARY LAYERING		technical report	
		6. PERFORMING ORG. REPORT NUMBER	
		ARL-TR-83-25	
7. AUTHOR(s)		8. CONTRACT OR GRANT NUMBER(s)	
C. Bennett J. Mark Daniels		N00014-78-C-0113	
9. PERFORMING ORGANIZATION NAME AND ADDRESS		10. PROGRAM ELEMENT, PROJECT, TASK AREA & WORK UNIT NUMBERS	
Applied Research Laboratories The University of Texas at Austin Austin, Texas 78712-8029			
11. CONTROLLING OFFICE NAME AND ADDRESS		12. REPORT DATE	
Naval Ocean Research and Development Activity NSTL Station, MS 39529		28 July 1983	
		13. NUMBER OF PAGES	
		66	
14. MONITORING AGENCY NAME & ADDRESS (if different from Controlling Office)		15. SECURITY CLASS. (of this report)	
		UNCLASSIFIED	
		15a. DECLASSIFICATION/DOWNGRADING SCHEDULE	
16. DISTRIBUTION STATEMENT (of this Report)			
APPROVED FOR PUBLIC RESEASE; DISTRIBUTION UNLIMITED.			
17. DISTRIBUTION STATEMENT (of the abstract entered in Block 20, if different from Report)			
18. SUPPLEMENTARY NOTES			
19. KEY WORDS (Continue on reverse side if necessary and identify by block number)			
study locations		detailed bathymetry	
cores		sedimentation and deposition	
seafloor spreading studies		post-depositional effects	
seismic reflection and refraction			
20. ABSTRACT (Continue on reverse side if necessary and identify by block number)			
This report organizes a vast amount of the available scientific literature treating the layering structure of marine sediments. The major areas covered are the North Atlantic and North Pacific Oceans. The report contains a user's guide and a useful cross-referenced bibliography. The user's guide organizes the contents of the bibliographic cross-reference system. The bibliographic cross-reference has twelve divisions, with numerous subdivisions. Papers are cross-referenced with respect to study locations, cores, seafloor spreading			

UNCLASSIFIED

SECURITY CLASSIFICATION OF THIS PAGE(When Data Entered)

20. (cont'd)

studies, seismic reflection and refraction, detailed bathymetry, maps, cross sections, geological history, processes of sedimentation and deposition, post-depositional effects, and sediment and rock properties.

UNCLASSIFIED

SECURITY CLASSIFICATION OF THIS PAGE(When Data Entered)

TABLE OF CONTENTS

	<u>Page</u>
I. INTRODUCTION	1
II. ORGANIZATION	3
III. USER'S GUIDE FOR BIBLIOGRAPHIC CROSS-REFERENCE SYSTEM	11
IV. BIBLIOGRAPHIC CROSS-REFERENCE	21
REFERENCES AND BIBLIOGRAPHY	45

S DTIC
 ELECTE **D**
 SEP 29 1983
 B

Accession For	
NTIS GRA&I	<input checked="" type="checkbox"/>
DTIC TAB	<input type="checkbox"/>
Unannounced	<input type="checkbox"/>
Justification	
By _____	
Distribution/	
Availability Codes	
Dist	Avail and/or Special
A	



I. INTRODUCTION

This guide provides and organizes a cross-referenced bibliography of literature describing the layering found in marine sediments. The list of references used is not exhaustive; however, many of the most recent articles have been abstracted from the literature and their references should provide adequate coverage of any subject within the purview of this work. The specific issue addressed is the nature and extent of sedimentary layering in the deep ocean, with a view toward specific application to the study of acoustic interactions with the sub-bottom. The area of interest was limited to the North Atlantic and North Pacific Oceans. A disproportionate number of references deal with the North Atlantic, especially its western region. This is a result of the amount of research carried out in this area, with subsequent journal publications. Because oceanic sedimentation is simple in neither theory nor observation (on the scale of interest), references were chosen that either discussed the general principles of oceanic sedimentation thoroughly or described in detail the sediments in a specific region. Particular emphasis was placed on finding references with mapped data because of its more general utility in typical applications. Without prejudice, only references in English were included. It should be recognized, however, that the Russian literature is copious and thorough, especially for the northern and far northwestern Pacific Ocean. Even with the above disclaimers, anyone interested in the acoustic properties of sediment anywhere in the deep North Atlantic and North Pacific Oceans should be able to find at least one reference covering the area of interest, and those interested in related topics should be able to find several references within the lists of references given for the general topic.

II. ORGANIZATION

The general order of subjects under each topical heading and subheading is one or more of the following: general to specific, abstract to concrete, or surface to great depth. The topical headings are organized randomly. More general material on a specific matter is often referenced under the general topical heading, though not necessarily under the subheading of specific interest; thus, both the general topical heading and subheading references should be searched for pertinent material. Under every topic and subtopic, the references are organized by geographic region.

Composition

The bibliographic cross-reference system consists of twelve topical headings, most with numerous subdivisions. The following topical headings are discussed.

1. Study Locations (by Geographic Region)
2. Study Locations (by Latitude and Longitude)
3. Seafloor Spreading
4. Cores
5. Seismic Reflection and Refraction
6. Detailed Bathymetry
7. Maps
8. Cross Sections
9. Geological History
10. Processes of Sedimentation and Deposition
11. Post-depositional Effects
12. Sediment and Rock Properties

1. Study Locations (by Geographic Region) is divided according to the ocean or sea of the reference. The North Atlantic and North Pacific Oceans are further subdivided into eastern and western regions. The finest scale subdivision is the specific physiographic province covered by the reference. Categories within the hierarchy are not mutually exclusive; i.e., a reference that appears under a specific physiographic province will also appear under a general heading that includes the specific province. However, a general treatment of an area that includes a specific province will not be listed as a reference under that province, even though it would probably be good for background.

2. Study Locations (by Latitude and Longitude) is simply a list of all the detailed study areas, whose center points have been sorted in order of increasing westwardness; thus, 0°E would be first, increasing to 180°E , and thence to 180°W , finally reaching 0°W . Latitude is used as a secondary sorting key, placing entries with the same centerpoint longitude in order of increasing northwardness. In the rare case where entries share the same centerpoint coordinates, yet do not cover the exact same area, the entries are sorted in order of increasing alphabetic position. The latitude range is expressed as south-to-north and the longitude range is west-to-east. This corresponds to bottom-to-top, left-to-right, for maps in standard orientation. Thus, entry (A1 $4^{\circ}\text{N}, 30^{\circ}\text{E}$) comes before entry (A1 $4^{\circ}\text{N}, 170^{\circ}\text{W}$), (A1 $4^{\circ}\text{N}, 30^{\circ}\text{E}$) comes before (A1 $5^{\circ}\text{N}, 30^{\circ}\text{E}$), and (A1 $4^{\circ}\text{N}, 30^{\circ}\text{E}$) comes before (A2 $4^{\circ}\text{N}, 30^{\circ}\text{E}$).

3. Seafloor Spreading is arbitrarily divided into four headings which cover aspects of global tectonics that affect the general sediment distribution in the oceans as a function of time. The first heading, Controls on Sediment Types and Depositional Environments, includes references dealing with large scale controls, both on sediment types (such as water depth, temperature, carbonate production rates, and terrigenous sediment influences) and deposition environments (such as gross current properties and bottom slope angles).

The second heading, Deduced Past Crustal Motions, includes references dealing with large scale sediment variations caused by crustal plate motions. For example, the degree of carbonate productivity in the oceans looks roughly like a series of belts parallel to the equator, which implies that a piece of crust that moves north-south will record a very different sequence of sediments than one that moves east-west, even if both are currently at the same latitude.

The third heading, Depth versus Age Relationship of Oceanic Crust, includes references dealing with large scale changes in depth with time of particular structural features and depositional environments. For example, new crust formed at the ridge of a spreading center is usually shallow enough for preservation of much carbonate deposition. But, as the former ridge crest is pushed away by newer crust it subsides, often exceeding the carbonate compensation depth, and thus restricting new sedimentation to abyssal red clays. Therefore, a typical bottom-to-top arrangement would be volcanics-carbonates-clay.

The fourth heading, Effects on Gross Crustal Structure, includes references dealing with gross bathymetry of the oceanic floor as produced by seafloor spreading. Generally, a cross section oriented normal to the ridge at the spreading center axis shows a trench-abyssal plain-ridge sequence, more or less bilaterally symmetric about the spreading center.

4. Cores is divided into eight sections which cover the various aspects of global core analysis. In the first section, cores are catalogued according to general and specific studies enabling the user to verify existence of core studies in a particular area of interest. The next two sections are divided into comprehensive deep core studies and comprehensive shallow core studies. The last five sections are specific site studies for: Deep Sea Drilling Project, Piston Cores, Gravity Cores, Continental Offshore Stratigraphic Tests, and other core types.

5. Seismic Reflection and Refraction is divided into four sections. The first section includes data processing and modeling of seismic reflection and refraction studies and sonobuoy analyses. The second section includes high frequency echo sounder data for the 3.5-12 kHz range. The third section includes single channel and multichannel low frequency seismic reflection data in all the areas under consideration. High and low frequency refraction data, as well as sonobuoy data, are included in the final section.

6. Detailed Bathymetry is given for all areas under consideration.

7. Maps: The map bibliography is cross-referenced under 29 sections. Studies of carbonate compensation depth (the level below which calcium carbonate forms less than 10% of the sediment) and lysocline (the depth which separates well preserved from poorly preserved assemblages of planktonic, pteropod, and coccolith) organisms are provided as useful information on sedimentation trends of biologically active areas. Hydrographic data includes current directions and velocities, as well as useful information not directly associated with sedimentation, such as salinity profiles. The gross structure of the oceans (major topographic features) are included on several maps, but can also be found in a separate category along with physiographic provinces. Sedimentation maps fall into several categories. Sediment processes include general sedimentation and surface erosion, as well as sedimentation rates and surface turbidite and debris flow processes. Maps depicting world surface sediment type distribution (including surface volcanic ash and surface sedimentary structures) are referenced.

Surface sediment property maps include grain size analyses, silica and carbonate distribution, and density measurements. In addition to the near-surface sedimentary structure maps, areal distributions of deep acoustic reflectors are cited, along with general sediment layer thickness distributions. Maps of special geological interest include areal distribution of oceanic crust, compressional wave

velocity distribution of ocean crust, gravity and magnetic anomalies, and heat flow distributions.

Survey locations include (PDR) track lines, reflection and refraction lines, sonobuoy stations, and cross sections.

8. Cross Sections: Geological cross sections are useful in the analysis of ocean substructure and in determination of geoacoustic parameters. Geoacoustic profiles are often the result of geological interpretation.

This heading has seven sections. Cross sections are referenced from the view of generalized, schematic representations to analyses of specific cross sections. Undetailed cross sections depicting sedimentation in the deep ocean and on the oceanic ridges are included. References are also cited containing velocity structures inferred from seismic refraction.

The section on lithostratigraphy cites references which deal with the physical characteristics of sedimentary features which change both vertically and laterally. The purpose of lithostratigraphy is to describe and organize these changes systematically into distinctive units. Lithologic units are differentiated according to types such as limestone, sand, biogenic ooze, etc. From the standpoint of layering studies, lithostratigraphic knowledge is perhaps the most important, particularly in the determination of geoacoustic parameters.

Interpreted seismic reflection lines are also referenced and give much information on the layering of oceanic sedimentation.

Core correlations from deep drilling and shallow coring give excellent information, but are limited to small areas.

Interpreted seismic lines are also referenced.

9. Geological History: The heading is divided into four sections according to geologic era: (1) Paleozoic, (2) Mesozoic, (3) Cenozoic, and (4) Pleistocene and Post-Pleistocene. This information is useful for those who are engaged in correlation of layering structures. Often geoaoustic information may be obtained by indirect extrapolation of information on one area to another area based on a knowledge of common geological history.

10. Processes of Sedimentation and Deposition: The eight sections of this heading treat sedimentary processes according to either the type of sediment involved or general processes such as current effects or sedimentation rates. Sediments are classified and referenced as terrigenous (land derived), biogenic (siliceous and calcareous), volcanic, and turbidite and debris flow sediments.

11. The Post-depositional Effects heading has five sections. The papers are referenced with respect to their specificity; the more general treatments are referenced first, with specific effects cited last. General compaction processes, lithification, and diagenetic effects are treated in the first section. Compaction and lithification deal with the process of group, formation, member, and bed assemblages in lithostratigraphic sequences. Diagenetic processes involve physical and chemical changes in sediment after deposition that convert it to consolidated rocks. These processes include compaction, cementation, recrystallization, and replacement, in addition to others. The following two sections reference papers which deal specifically with the subjects of carbonate and silica compaction, lithification, and diagenesis. The last two sections are limited to the special processes of manganese molybdenum formulation and the formation of iron rich crusts.

12. Sediment and Rock Properties is divided into eight sections which treat the petrological and sedimentological properties of the ocean sub-bottom, with special emphasis on acoustics. The first section addresses the subject of models of physical properties of sediments. Although velocity and density models are emphasized in the papers cited,

other properties such as porosity, grain size, and other environmental parameters are discussed. The second section references papers which discuss fine scale and coarse scale lithostratigraphy. The next three sections cite papers on the subjects of acoustic properties of sedimentary structures, the origin and nature of acoustic reflectors (general), and the origin and nature of major acoustic reflectors (specific examples). Specific observations of physical properties of sediments are dealt with in the sixth section, which also overlaps considerably with the first section. Lateral variations in physical properties of the ocean sub-bottom and variations of lithology with respect to time are discussed in papers referenced in the final two sections.

III. USER'S GUIDE FOR
BIBLIOGRAPHIC CROSS-REFERENCE SYSTEM

	<u>Page</u>
1. STUDY LOCATIONS (BY GEOGRAPHIC REGION)	21
World	21
North Atlantic Ocean	21
Mid-Atlantic Ridge	21
North Atlantic Ocean, East	21
Alboran Basin	21
Arctic Ocean	21
Barents Sea	21
Canary Basin	21
Greenland Sea	21
Madeira Rise	21
Moroccan Rise	21
Norwegian Sea	22
Rockall Trough	22
North Atlantic Ocean, West	22
Amazon Cone	22
Bahamas	22
Bermuda Rise	22
Blake Plateau	22
Blake-Bahama Abyssal Plain	22
Blake-Bahama Outer Ridge	22
Columbus Basin	22
Grand Banks	22
Greater Antilles Outer Ridge	22
Guiana Basin	22
Hatteras Abyssal Plain	22
Hatteras Outer Ridge	22
Hispaniola-Caicos Basin	22
Hudson Canyon	22
Iceland Basin	22
Labrador Sea	22
Mid-Ocean Canyon	22
Nares Abyssal Plain	22



	<u>Page</u>
Navidad Basin	22
St. Croix Basin	22
Silver Abyssal Plain	22
Sohm Abyssal Plain	22
Tongue of the Ocean	22
Whiting Basin	22
South Atlantic Ocean	23
North Pacific Ocean	23
Equatorial	23
Magellan Rise	23
North Pacific Ocean, East	23
Aleutian Basin	23
Bering Sea	23
Carnegie Ridge	23
Clarion Fracture Zone	23
Clipperton Fracture Zone	23
Panama Basin	23
San Diego Trough	23
Santa Monica Basin	23
North Pacific Ocean, West	23
Bonin Trough	23
Coral Sea	23
Japan Sea	23
Meiji Sediment Tongue	24
Nauru Basin	24
Obuchev Swell	24
Ontong-Java Plateau	24
Shatsky Plateau	24
Shatsky Rise	24
South Pacific Ocean	24
Bauer Basin	24
Samoa Passage	24
Indian Ocean	24
Bay of Bengal	24
Caribbean Sea	24
Mediterranean Sea	24

	<u>Page</u>
Gulf of Mexico	24
2. STUDY LOCATIONS (BY LATITUDE AND LONGITUDE)	25
3. SEAFLOOR SPREADING	28
Controls on Sediment Types and Depositional Environments	28
World	28
Atlantic Ocean	28
Pacific Ocean	28
Indian Ocean	28
Deduced Past Crustal Motions	28
World	28
Atlantic Ocean	28
Pacific Ocean	28
Indian Ocean	28
Depth versus Age Relationship of Oceanic Crust	28
World	28
Atlantic Ocean	28
Pacific Ocean	28
Effects on Gross Crustal Structure	28
Atlantic Ocean	28
Pacific Ocean	28
4. CORES	29
Core Catalogs	29
General and Specific Studies	29
Comprehensive Deep Core Studies	29
World	29
Atlantic Ocean	29
Comprehensive Shallow Core Studies	29
World	29
Deep Sea Drilling Project Studies	29
World	29
Atlantic Ocean	29
Pacific Ocean	29
Indian Ocean	29
Caribbean Sea	29
Mediterranean Sea	29
Piston Core Studies	29
Atlantic Ocean (Giant Piston Cores)	29
Atlantic Ocean	29

	<u>Page</u>
Pacific Ocean	29
Indian Ocean	29
Caribbean Sea	29
Mediterranean Sea	29
Gulf of Mexico	29
Gravity Core Studies	30
Atlantic Ocean	30
Pacific Ocean	30
Continental Offshore Stratigraphic Test Studies	30
Atlantic Ocean	30
Other Core Types	30
Atlantic Ocean	30
Pacific Ocean	30
5. SEISMIC REFLECTION AND REFRACTION	31
Data Processing and Modeling	31
Seismic Reflection and Refraction	31
Sonobuoy	31
High Frequency Echosounder Data (PDR), 3.5-12 kHz	31
Atlantic Ocean	31
Pacific Ocean	31
Indian Ocean	31
Caribbean Sea	31
Gulf of Mexico	31
Low Frequency Seismic Reflection Data, Single Channel and Multichannel	31
Atlantic Ocean	31
Pacific Ocean	31
Caribbean Sea	31
Gulf of Mexico	31
High and Low Frequency Refraction Data, including Sonobuoy Data	31
Atlantic Ocean	31
Pacific Ocean	31
Indian Ocean	31
Caribbean Sea	31
Gulf of Mexico	31
6. DETAILED BATHYMETRY	32
Atlantic Ocean	32
Pacific Ocean	32
Indian Ocean	32
Caribbean Sea	32
Gulf of Mexico	32

	<u>Page</u>
7. MAPS	33
Carbonate Compensation Surface and Lysocline	33
World	33
Atlantic Ocean	33
Pacific Ocean	33
Hydrographic Data (Current Directions and Velocities, etc.)	33
Atlantic Ocean	33
Pacific Ocean	33
Gross Structure	33
Atlantic Ocean	33
Pacific Ocean	33
Indian Ocean	33
Sedimentation (General Processes)	33
Atlantic Ocean	33
Pacific Ocean	33
Surface Erosion	33
Pacific Ocean	33
Sedimentation Rates	33
Atlantic Ocean	33
Pacific Ocean	33
Physiographic Provinces	33
Atlantic Ocean	33
Pacific Ocean	33
Caribbean Sea	33
Gulf of Mexico	33
Surface Sediment Type	34
World	34
Atlantic Ocean	34
Pacific Ocean	34
Surface Sediment Properties: Grain-Size Analyses	34
Atlantic Ocean	34
Pacific Ocean	34
Surface Sediment Properties: Silica Distribution	34
World	34
Atlantic Ocean	34
Pacific Ocean	34
Surface Sediment Properties: Carbonate Distribution	34
Atlantic Ocean	34
Pacific Ocean	34

	<u>Page</u>
Surface Sediment Properties: Density	34
Atlantic Ocean	34
Pacific Ocean	34
Surface Turbidite and Debris Flow Distribution	34
World	34
Atlantic Ocean	34
Pacific Ocean	34
Surface Ash Distribution	34
Pacific Ocean	34
Surface Sedimentary Structures	34
Atlantic Ocean	34
Near-Surface Sedimentary Structures: PDR	
Echo Characteristics	35
Atlantic Ocean	35
Pacific Ocean	35
Indian Ocean	35
Near-Surface and Deep Acoustic Reflectors:	35
Areal Distribution	35
Atlantic Ocean	35
Pacific Ocean	35
Sediment Layer Thicknesses	35
World	35
Atlantic Ocean	35
Pacific Ocean	35
Caribbean Sea	35
Gulf of Mexico	35
Age of Oceanic Crust: Areal Distribution	35
World	35
P-Wave Velocity of Oceanic Crust	35
Atlantic Ocean	35
Gravity Anomalies	35
Atlantic Ocean	35
Magnetic Anomalies	35
Atlantic Ocean	35
Pacific Ocean	35
Heat Flow	35
Atlantic Ocean	35
Survey Locations: PDR Track Lines	36
Atlantic Ocean	36
Pacific Ocean	36

	<u>Page</u>
Survey Locations: Reflection Track Lines	36
Atlantic Ocean	36
Pacific Ocean	36
Survey Locations: Refraction Lines and Sonobuoy Stations	36
Atlantic Ocean	36
Pacific Ocean	36
Indian Ocean	36
Survey Locations: Cross Sections	36
Atlantic Ocean	36
Pacific Ocean	36
DSDP Sites	36
World	36
Atlantic Ocean	36
Pacific Ocean	36
Indian Ocean	36
Core Locations	36
Atlantic Ocean	36
Pacific Ocean	36
Indian Ocean	36
Caribbean Sea	36
Mediterranean Sea	36
8. CROSS SECTIONS	37
Schematic (Generalized, Without Details)	37
Sedimentation on Oceanic Ridges (World)	37
Sedimentation in the Deep Ocean (World)	37
Structure of the Mid-Atlantic Ridge	37
Structure of the Atlantic Basin	37
Structure of the Pacific Basin	37
Velocity Structure (Usually Inferred from Seismic Refraction)	37
Atlantic Ocean	37
Pacific Ocean	37
Caribbean Sea	37
Lithostratigraphy	37
Atlantic Ocean	37
Pacific Ocean	37
Indian Ocean	37
Caribbean Sea	37
Gulf of Mexico	37
Interpreted Seismic Reflection Lines	37
Atlantic Ocean	37
Pacific Ocean	37

	<u>Page</u>
Caribbean Sea	37
Gulf of Mexico	37
Core Correlations from Deep Drilling	37
World	37
Atlantic Ocean	37
Pacific Ocean	37
Interpreted PDR Lines	38
Atlantic Ocean	38
Pacific Ocean	38
Caribbean Sea	38
Gulf of Mexico	38
Core Correlations from Shallow Coring	38
Atlantic Ocean	38
Pacific Ocean	38
Indian Ocean	38
Caribbean Sea	38
9. GEOLOGICAL HISTORY	39
Paleozoic	39
World	39
Atlantic Ocean	39
Mesozoic	39
World	39
Atlantic Ocean	39
Pacific Ocean	39
Cenozoic	39
World	39
Atlantic Ocean	39
Pacific Ocean	39
Pleistocene and Post-Pleistocene	39
World	39
Atlantic Ocean	39
Pacific Ocean	39
10. PROCESSES OF SEDIMENTATION AND DEPOSITION	40
Oceanic (Generalized Treatments)	40
World	40
Atlantic Ocean	40
Pacific Ocean	40
Indian Ocean	40

	<u>Page</u>
Terrigenous Sedimentation	40
Atlantic Ocean	40
Pacific Ocean	40
Carbonate Sedimentation	40
World	40
Atlantic Ocean	40
Pacific Ocean	40
Siliceous Sedimentation	40
World	40
Volcanogenic Sedimentation	40
World	40
Atlantic Ocean	40
Pacific Ocean	40
Turbidites and Debris Flows	40
World	40
Atlantic Ocean	40
Pacific Ocean	40
Current Effects	41
World	41
Atlantic Ocean	41
Sedimentation Rates	41
World	41
Atlantic Ocean	41
Pacific Ocean	41
11. POST-DEPOSITIONAL EFFECTS	42
Generalized Compaction, Lithification, and Diagenetic Effects	42
Carbonate Compaction, Lithification, and Diagenesis	42
World	42
Pacific Ocean	42
Silica Compaction, Lithification, and Diagenesis (including Chertification)	42
World	42
Atlantic Ocean	42
Formation of Manganese Nodules	42
Formation of Iron Rich Crusts	42
12. SEDIMENT AND ROCK PROPERTIES	43

	<u>Page</u>
Models of Physical Properties of (especially Velocity and Density)	43
World	43
Atlantic Ocean	43
Pacific Ocean	43
Indian Ocean	43
Mediterranean Sea	43
Lithostratigraphy (Both Fine Scale and Coarse Scale)	43
World	43
Atlantic Ocean	43
Pacific Ocean	43
Indian Ocean	43
Mediterranean Sea	43
Acoustic Properties of Sedimentary Structures	43
Atlantic Ocean	43
Pacific Ocean	43
Indian Ocean	43
Origin and Nature of Acoustic Reflectors	43
Atlantic Ocean	43
Pacific Ocean	43
Indian Ocean	43
Origin and Nature of Major Acoustic Reflectors	43
Atlantic Ocean	43
Pacific Ocean	43
Observations of Physical Properties of Sediments	44
World	44
Atlantic Ocean	44
Pacific Ocean	44
Indian Ocean	44
Mediterranean Sea	44
Lateral Variations in Physical Properties	44
Atlantic Ocean	44
Pacific Ocean	44
Variations in Lithology versus Time	44
Atlantic Ocean	44

IV. BIBLIOGRAPHIC CROSS-REFERENCE

1. STUDY LOCATIONS (BY GEOGRAPHIC LOCATIONS)

WORLD: (General Studies, Syntheses, Models of the World Ocean)

General and Specific Studies:

B5, B7, B10, B11, C1, C3, D6, G1, G2, G4, H2, H3, H4, H19, K2,
L2, L4, M3, M10, M12, N1, N2, P4, P5, R3, V1, W1, W2, W4.

ATLANTIC OCEAN

NORTH ATLANTIC OCEAN: (Regional and Central Atlantic Studies)

General and Specific Studies:

A1, B1, B6, D4, D6, D7, D8, E1, E2, E8, E10, E17, E18, E19,
E20, G5, H6, H11, H15, L5, L7, M1, N5, R4, R5, R6, S2, T1, T2,
T3.

Mid-Atlantic Ridge: E20, M1, V3

NORTH ATLANTIC OCEAN, EAST

General and Specific Studies:

D3, E3, E4, E6, E8, E11, E14, H13, J1, J3, M8, S6, S11, V5.

Alboran Basin:	E8
Arctic Ocean:	E14
Barents Sea:	E3
Canary Basin:	E6
Greenland Sea:	D3, E4, E14
Madeira Rise:	E8, E11
Moroccan Rise:	J3

Norwegian Sea: D3, E4, E14, H13, S6
Rockall Trough: S11

NORTH ATLANTIC OCEAN, WEST

General and Specific Studies:

A2, B2, B3, D1, D2, D5, D6, E1, E3, E5, E7, E8, E12, E13, E15,
H8, H9, H12, H16, J4, J5, K4, M8, M14, P2, R2, S1, S6, S8, S9,
S10, S13, T3, T4, T5, T6, T7, T8, T9, V4, W3.

Amazon Cone: E8
Bahamas: E13, E15
Bermuda Rise: E7, E13, E15, S1, T9
Blake Plateau: E13, P2
Blake-Bahama Abyssal Plain: P2
Blake-Bahama Outer Ridge: H8
Columbus Basin: P2
Grand Banks: E8
Greater Antilles Outer Ridge: T9
Guiana Basin: D5
Hatteras Abyssal Plain: E5, H12, P2, S9, T4
Hatteras Outer Ridge: A2
Hispaniola-Caicos Basin: B3, P2
Hudson Canyon: E3, E15
Iceland Basin: D6
Labrador Sea: D6
Mid-Ocean Canyon: E15
Nares Abyssal Plain: T4, T9
Navidad Basin: P2, S8
St. Croix Basin: P2
Silver Abyssal Plain: P2, V4
Sohm Abyssal Plain: H12, P2, S13
Tongue of the Ocean: P2
Whiting Basin: B2

SOUTH ATLANTIC OCEAN

General and Specific Studies:

B1, E8, E19, L5, R5, R6.

PACIFIC OCEAN

NORTH PACIFIC OCEAN: (Regional and Central Pacific Studies)

General and Specific Studies:

A1, B6, C5, D4, D6, D7, D8, E1, E17, H1, H2, H5, H7, H10, H11,
H14, H17, L7, L8, M8, M13, S2, S3, S12, V2, W5.

Central Equatorial: B6, D6, H17, L7, L8, M8, M13, V2

Magellan Rise: S3

NORTH PACIFIC OCEAN, EAST

General and Specific Studies:

E9, H5, H7, L3, L6, M4, M5, M6, M7, P2, R1, S4, T10, W6.

Aleutian Basin: S4

Bering Sea: H5, R1, S4

Carnegie Ridge: T10

Clarion Fracture Zone: H7

Clipperton Fracture Zone: E9

Panama Basin: W6

San Diego Trough: T10

Santa Monica Basin: P2

NORTH PACIFIC OCEAN, WEST

General and Specific Studies:

B8, B9, C2, C4, E21, F1, F2, H5, H18, J2, J6, J7, K5, L1, M8,
M11, N3, N4, P1, P3, S5, T10.

Bonin Trough: J2

Coral Sea: M8, M11

Japan Sea: H5

Meiji Sediment Tongue:	S5
Nauru Basin:	L1
Obruchev Swell:	S4
Ontong-Java Plateau:	B8, B9, F2, J6, J7, K5, M11
Shatsky Plateau:	C2
Shatsky Rise:	E21, P3

SOUTH PACIFIC OCEAN

General and Specific Studies:
E16, T10, W5.

Bauer Basin:	E16
Samoa Passage:	T10

OTHER REGIONS

INDIAN OCEAN

General and Specific Studies:
A1, D4, H5, K3, M8, R6, S2.

Bay of Bengal:	H5
----------------	----

CARIBBEAN SEA

General and Specific Studies:
E1, E12, E15, M8, S6.

MEDITERRANEAN SEA

General and Specific Studies:
A1, H13, M8, R6.

GULF OF MEXICO

General and Specific Studies:
E8, E12, M8.

Mississippi Fan:	E8
------------------	----

2. STUDY LOCATIONS
(BY LATITUDE AND LONGITUDE)

	<u>Location of Center</u>	<u>Latitude Range</u>	<u>Longitude Range</u>
M8	21.0°N, 0.0°E	0.0°N- 42.0°N	30.0°W- 30.0°E
D3	70.5°N, 0.0°E	60.0°N- 81.0°N	30.0°W- 30.0°E
H13	51.5°N, 8.0°E	30.0°N- 73.0°N	22.0°W- 38.0°E
E3	73.6°N, 31.0°E	69.2°N- 78.0°N	15.0°E- 46.0°E
H5	9.0°N, 89.0°E	2.0°S- 20.0°N	80.0°E- 98.0°E
H5	42.3°N, 135.5°E	37.0°N- 47.6°N	130.0°E-141.0°E
E21	44.0°N, 138.0°E	24.0°N- 64.0°N	105.0°E-171.0°E
J2	27.5°N, 141.5°E	26.0°N- 29.0°N	140.0°E-143.0°E
P3	35.0°N, 157.5°E	30.0°N- 40.0°N	150.0°E-165.0°E
B9	1.5°N, 158.0°E	4.0°S- 7.0°N	153.0°E-163.0°E
K5	5.0°S, 160.0°E	20.0°S- 10.0°N	140.0°E-180.0°E
J7	0.5°S, 160.0°E	4.0°S- 3.0°N	155.0°E-165.0°E
N3	48.0°N, 161.0°E	39.0°N- 57.0°N	140.0°E-178.0°W
L1	5.5°N, 165.5°E	2.0°N- 9.0°N	162.0°E-169.0°E
S5	53.0°N, 166.0°E	48.0°N- 58.0°N	156.0°E-176.0°E
C4	46.0°N, 167.5°E	36.0°N- 56.0°N	154.0°E-179.0°W
H5	55.0°N, 175.0°E	50.0°N- 60.0°N	160.0°E-170.0°W
R1	57.0°N, 175.0°E	50.0°N- 64.0°N	160.0°E-170.0°W
S3	8.0°N, 180.0°E	7.0°N- 9.0°N	179.0°E-179.0°W
S4	56.0°N, 175.0°W	52.0°N- 60.0°N	160.0°E-150.0°W
H10, H14	40.0°N, 170.0°W	20.0°N- 60.0°N	130.0°E-110.0°W
T10	10.5°S, 169.5°W	14.5°S- 6.5°S	171.8°W-167.2°W
L6	5.0°N, 162.5°W	0.0°N- 10.0°N	170.0°W-155.0°W
C5	30.0°N, 157.0°W	30.0°N- 30.0°N	157.0°W-157.0°W
M13	8.3°N, 153.1°W	8.3°N- 8.4°N	153.1°W-153.0°W
H7	14.0°N, 153.0°W	13.9°N- 14.1°N	153.1°W-152.9°W
L3	34.0°N, 149.0°W	30.0°N- 38.0°N	151.0°W-147.0°W
E9	6.5°N, 146.0°W	3.0°N- 10.0°N	152.0°W-140.0°W
M7	4.0°N, 136.0°W	4.0°N- 4.0°N	136.0°W-136.0°W

STUDY LOCATIONS (cont'd)

	<u>Location of Center</u>	<u>Latitude Range</u>	<u>Longitude Range</u>
L8	13.7°N, 126.3°W	13.7°N- 13.8°N	126.3°W-126.2°W
T10	31.5°N, 124.9°W	31.5°N- 31.6°N	124.9°W-124.0°W
T10	32.5°N, 121.5°W	29.0°N- 36.0°N	127.0°W-116.0°W
T10	32.4°N, 117.5°W	32.4°N- 32.5°N	117.6°W-117.4°W
E16	14.0°S, 103.0°W	17.0°S- 11.0°S	107.0°W- 99.0°W
T10	1.0°S, 86.0°W	2.0°S- 0.0°N	87.0°W- 85.0°W
M8	17.5°N, 77.5°W	0.0°N- 35.0°N	95.0°W- 60.0°W
E13	27.2°N, 77.5°W	23.0°N- 31.4°N	80.2°W- 74.8°W
E15	25.4°N, 77.4°W	22.8°N- 28.0°N	80.0°W- 74.8°W
H8	28.3°N, 74.4°W	28.2°N- 28.4°N	74.5°W- 74.3°W
W3	24.5°N, 74.0°W	24.0°N- 25.0°N	75.0°W- 73.0°W
E8	38.5°N, 72.5°W	35.0°N- 42.0°N	76.0°W- 69.0°W
B3	20.8°N, 72.3°W	19.6°N- 22.0°N	73.3°W- 71.3°W
S9	33.0°N, 71.5°W	32.0°N- 34.0°N	73.0°W- 70.0°W
K4	35.5°N, 71.5°W	31.0°N- 40.0°N	78.0°W- 65.0°W
E7	28.7°N, 71.0°W	23.0°N- 34.4°N	77.5°W- 64.5°W
E15	38.3°N, 70.2°W	35.0°N- 41.6°N	74.4°W- 66.0°W
V4	23.0°N, 70.0°W	21.0°N- 25.0°N	72.0°W- 68.0°W
E13	37.8°N, 69.9°W	35.6°N- 40.0°N	72.8°W- 67.0°W
S8	20.0°N, 69.5°W	19.0°N- 21.0°N	71.0°W- 68.0°W
S1	26.5°N, 69.5°W	18.0°N- 35.0°N	82.0°W- 57.0°W
H12	30.5°N, 69.5°W	23.0°N- 38.0°N	75.0°W- 64.0°W
A2	35.5°N, 69.4°W	34.7°N- 36.3°N	70.8°W- 68.0°W
H9	37.0°N, 69.0°W	30.6°N- 44.0°N	78.0°W- 60.0°W
T4	22.0°N, 68.0°W	4.0°N- 40.0°N	84.0°W- 52.0°W
T9	22.5°N, 67.5°W	18.0°N- 27.0°N	75.0°W- 60.0°W
E15	19.5°N, 66.5°W	18.0°N- 21.0°N	69.0°W- 64.0°W
H16	29.0°N, 66.0°W	20.0°N- 38.0°N	72.0°W- 60.0°W
E15	32.2°N, 64.5°W	31.6°N- 32.8°N	65.3°W- 63.7°W
E13	32.7°N, 64.4°W	31.7°N- 33.7°N	65.3°W- 63.5°W

STUDY LOCATIONS (cont'd)

	<u>Location of Center</u>	<u>Latitude Range</u>	<u>Longitude Range</u>
G5	29.5°N, 62.0°W	21.0°N- 38.0°N	80.0°W- 44.0°W
H9	41.0°N, 62.0°W	36.0°N- 46.0°N	70.0°W- 54.0°W
H9	40.0°N, 61.0°W	30.0°N- 50.0°N	80.0°W- 42.0°W
E13	27.5°N, 59.0°W	10.0°N- 45.0°N	78.0°W- 40.0°W
E10	11.0°N, 55.0°W	9.0°N- 13.0°N	58.0°W- 52.0°W
H12	36.5°N, 55.0°W	28.0°N- 45.0°N	70.0°W- 40.0°W
H9	45.0°N, 55.0°W	25.0°N- 65.0°N	80.0°W- 30.0°W
E8	4.5°N, 46.5°W	3.0°N- 6.0°N	49.0°W- 44.0°W
H12	40.5°N, 46.5°W	36.0°N- 45.0°N	53.0°W- 40.0°W
V3	22.6°N, 45.9°W	22.1°N- 23.1°N	46.4°W- 45.4°W
D6	56.0°N, 44.7°W	52.0°N- 60.0°N	49.4°W- 40.0°W
E15	40.5°N, 43.5°W	38.0°N- 43.0°N	46.0°W- 41.0°W
M8	10.5°N, 43.0°W	9.0°N- 12.0°N	45.0°W- 41.0°W
D1, D2, M8	5.0°N, 42.5°W	10.0°S- 20.0°N	65.0°W- 20.0°W
D5	5.0°N, 40.0°W	10.0°S- 20.0°N	60.0°W- 20.0°W
M1	36.8°N, 33.3°W	36.8°N- 36.8°N	33.3°W- 33.2°W
M1	35.0°N, 32.5°W	25.0°N- 45.0°N	45.0°W- 20.0°W
D6	60.0°N, 21.0°W	56.0°N- 64.0°N	30.0°W- 12.0°W
E11	29.0°N, 20.5°W	23.0°N- 35.0°N	28.0°W- 13.0°W
V5	20.0°N, 20.0°W	5.0°N- 35.0°N	30.0°W- 10.0°W
E8, J1	16.5°N, 18.5°W	14.0°N- 19.0°N	21.0°W- 16.0°W
E6, E8	26.5°N, 18.5°W	23.6°N- 29.4°N	23.0°W- 14.0°W
J3	30.5°N, 13.0°W	27.0°N- 34.0°N	20.0°W- 6.0°W
S11	56.3°N, 12.5°W	56.3°N- 56.3°N	12.5°W- 12.5°W
E4	70.5°N, 2.5°W	60.0°N- 81.0°N	25.0°W- 20.0°E

3. SEAFLOOR SPREADING

Controls on Sediment Types and Depositional Environments

World:	G1
Atlantic Ocean:	E20, M1, S2, V3
Pacific Ocean:	K5, S2, S4, V2, W5
Indian Ocean:	K3, S2

Deduced Past Crustal Motions

World:	B11
Atlantic Ocean:	E4, S2
Pacific Ocean:	B6, S2, S4, S5, W5
Indian Ocean:	S2

Depth versus Age Relationship of Oceanic Crust

World:	B11
Atlantic Ocean:	B5
Pacific Ocean:	B6

Effects on Gross Crustal Structure

Atlantic Ocean:	E4, K4, N5
Pacific Ocean:	K5, S4, V2

4. CORES

Core Catalogs

General and Specific Studies: S7

Comprehensive Deep Core Studies

World: C3, L4

Atlantic Ocean: L5

Comprehensive Shallow Core Studies

World: M8, N2, P4

Deep Sea Drilling Project Studies

World: G2, P5, V1, W1, W2

Atlantic Ocean: A2, E12, J4, J5, N5, R4, R5, R6, S1, S2, T1, T2, T5, V5

Pacific Ocean: F1, J7, K5, L1, L6, M11, N3, P1, P3, R1, S2, S3, S4, S5, S12, V2, W5

Indian Ocean: R6, S2

Caribbean Sea: E12

Mediterranean Sea: R6

Piston Core Studies

Atlantic Ocean: (Giant Piston Cores) H8, S11

Atlantic Ocean: A1, A2, B1, B2, B3, D1, D2, D3, D4, D5, E6, E10, E11, E12, E13, E14, E15, E17, E19, E20, H9, H11, H12, H13, J1, M1, P2, S6, S8, S13, T4, T9, V3, V4, W3

Pacific Ocean: A1, C4, C5, D4, E9, E17, E21, H7, H10, H11, H14, J2, L3, L6, M5, M6, M7, M13, N3, P2, T10, V2

Indian Ocean: A1, D4

Caribbean Sea: E12

Mediterranean Sea: A1, H13

Gulf of Mexico: E12

CORES (cont'd)

Gravity Core Studies

Atlantic Ocean: E7, M1

Pacific Ocean: H7

Continental Offshore Stratigraphic Test Studies

Atlantic Ocean: G5, J5, R4

Other Core Types

Atlantic Ocean: H8

Pacific Ocean: H7

5. SEISMIC REFLECTION AND REFRACTION

Data Processing and Modeling

Seismic Reflection and Refraction: H19

Sonobuoy: B12, L2

High Frequency Echosounder Data (PDR), 3.5-12 kHz

Atlantic Ocean: A2, D1, D3, D4, D6, E6, E7, E8, E10, E11, E12,
E15, E20, H8, H9, J1, J3, L7, M10, T4, V3

Pacific Ocean: B9, D4, D6, E9, H7, J2, L7, L8, M5, M7, M13,
T10

Indian Ocean: D4

Caribbean Sea: E12, E15

Gulf of Mexico: E12

Low Frequency Seismic Reflection Data, Single Channel and Multichannel

Atlantic Ocean: A2, E1, E4, E12, E17, E18, E19, E20, G5, H9,
H16, K4, N5, R4, S9, S13, T5, T6, W3

Pacific Ocean: C2, E1, E9, E17, E21, F2, H7, H17, H18, J2, K5,
L1, L6, M13, P3, R1, S3, S4, S5, S12

Caribbean Sea: E1, E12

Gulf of Mexico: E12

High and Low Frequency Refraction Data, including Sonobuoy Data

Atlantic Ocean: E3, E4, E12, H15, H16, N5, R4, S1, T6

Pacific Ocean: F2, H5, H17, H18, J6, J7, R1, S4

Indian Ocean: H5

Caribbean Sea: E12

Gulf of Mexico: E12

6. DETAILED BATHYMETRY

Atlantic Ocean: A2, B3, D3, E3, E6, E7, E8, E10, E11, E12, H8,
M1, R4, S8, V3, V4, W3

Pacific Ocean: E9, H5, H7, K5, L6, M13, P3, S5, T10

Indian Ocean: H5

Caribbean Sea: E12

Gulf of Mexico: E12

7. MAPS

Carbonate Compensation Surface and Lysocline

World: B11
Atlantic Ocean: B6
Pacific Ocean: B6

Hydrographic Data (Current Directions and Velocities, etc.)

Atlantic Ocean: D3, E10, H9, M10
Pacific Ocean: S5

Gross Structure

Atlantic Ocean: R4, S2
Pacific Ocean: S2
Indian Ocean: S2

Sedimentation (General Processes)

Atlantic Ocean: E10, E11, H11
Pacific Ocean: H11, H14

Surface Erosion

Pacific Ocean: L3

Sedimentation Rates

Atlantic Ocean: D2, E19
Pacific Ocean: W5

Physiographic Provinces

Atlantic Ocean: D1, D2, D3, E4, E7, E10, E12, E15, E19, E20,
H9, H11, N5, R4, T4, V4, W3
Pacific Ocean: H11, M13, S4, S5
Caribbean Sea: E12, E15
Gulf of Mexico: E12

MAPS (cont'd)

Surface Sediment Type

World: B5
Atlantic Ocean: D2, D6, E12, E13, H9, H11, H12, J1, M1, R4, V4
Pacific Ocean: D6, H7, H11

Surface Sediment Properties: Grain Size Analyses

Atlantic Ocean: B3, H11, H12
Pacific Ocean: H11, H14

Surface Sediment Properties: Silica Distribution

World: C1
Atlantic Ocean: C1, D6
Pacific Ocean: D6, V2

Surface Sediment Properties: Carbonate Distribution

Atlantic Ocean: R4
Pacific Ocean: V2

Surface Sediment Properties: Density

Atlantic Ocean: H11
Pacific Ocean: H11

Surface Turbidite and Debris Flow Distribution

World: M10
Atlantic Ocean: D6, E6, E8
Pacific Ocean: D6, H10, H14

Surface Ash Distribution

Pacific Ocean: H10, H14

Surface Sedimentary Structures

Atlantic Ocean: A2, E10, E11, E12, J1, J3, M10

MAPS (cont'd)

Near-Surface Sedimentary Structures: PDR Echo Characteristics

Atlantic Ocean: D1, D3, D4, H9, J1, M10
Pacific Ocean: D4, H7, J2
Indian Ocean: D4

Near-Surface and Deep Acoustic Reflectors: Areal Distribution

Atlantic Ocean: T5
Pacific Ocean: E9, M13

Sediment Layer Thicknesses

World: B5
Atlantic Ocean: B3, E3, E4, E12, E17, E19, H15, K4, R4, V3, V4
Pacific Ocean: E17, H18, K5, M13, S5, S12, V2
Caribbean Sea: E12
Gulf of Mexico: E12

Age of Oceanic Crust: Areal Distribution

World: B11

P-Wave Velocity of Oceanic Crust

Atlantic Ocean: H15

Gravity Anomalies

Atlantic Ocean: E3, R4

Magnetic Anomalies

Atlantic Ocean: R4
Pacific Ocean: I.1

Heat Flow

Atlantic Ocean: R4

MAPS (cont'd)

Survey Locations: PDR Track Lines

Atlantic Ocean: D1, D3, E7, E12, J3, L7, V3

Pacific Ocean: H7, L7, L8, M13, T10

Survey Locations: Reflection Track Lines

Atlantic Ocean: E4, E12, E19, G5, H16, K4, R4, S9

Pacific Ocean: E9, H7, H17, H18, K5, R1, S5

Survey Locations: Refraction Lines and Sonobuoy Stations

Atlantic Ocean: E3, E4, E12, H16

Pacific Ocean: H5, H17, H18, J7, R1

Indian Ocean: H5

Survey Locations: Cross Sections

Atlantic Ocean: J5

Pacific Ocean: S4, V2

DSDP Sites

World: P5, V1, W1

Atlantic Ocean: J5, N5, S1, S2, T1, T5, V5

Pacific Ocean: J7, L1, P3, R1, S2, S3, S4, S5, S12, V2, W5

Indian Ocean: S2

Core Locations

Atlantic Ocean: A1, A2, B1, B3, D2, D4, D5, E7, E10, E13, E14, E15, E17, H9, H12, H13, J1, M1, S6, S8, S13, T2, T4, V3, V4, W3

Pacific Ocean: A1, C4, D4, E9, E17, E21, F1, H7, H14, L3, L6, M8, M11, M13, N3, P2, T10, V2

Indian Ocean: A1, D4

Caribbean Sea: E15, S6

Mediterranean Sea: A1, H13

8. CROSS SECTIONS

Schematic (Generalized; Without Details)

Sedimentation on Oceanic Ridges (World): B11
Sedimentation in the Deep Ocean (World): G1
Structure of the Mid-Atlantic Ridge: E20
Structure of the Atlantic Basin: E1, J5
Structure of the Pacific Basin: L1

Velocity Structure (Usually Inferred from Seismic Refraction)

Atlantic Ocean: E3, E12, G5, H15, H16, N5, R4
Pacific Ocean: F2, S4
Caribbean Sea: E12

Lithostratigraphy

Atlantic Ocean: B5, E1, E12, S2
Pacific Ocean: S2, S4, V2
Indian Ocean: S2
Caribbean Sea: E12
Gulf of Mexico: E12

Interpreted Seismic Reflection Lines

Atlantic Ocean: A2, E4, E12, E17, E18, E19, E20, G5, H9, H16,
K4, R4, S9, S13, T5
Pacific Ocean: E9, E17, E21, H7, J2, K5, L1, L6, P3, R1, S3,
S4, S5, S12
Caribbean Sea: E12
Gulf of Mexico: E12

Core Correlations from Deep Drilling

World: W1
Atlantic Ocean: G5
Pacific Ocean: F1

CROSS SECTIONS (cont'd)

Interpreted PDR Lines

Atlantic Ocean: A2, E6, E7, E8, E10, E11, E12, E15, E20, H8,
J1, T4, V3
Pacific Ocean: B9, E9, H7, J2, L8, M5, M13
Caribbean Sea: E12, E15
Gulf of Mexico: E12

Core Correlations from Shallow Coring

Atlantic Ocean: D2, D4, D5, E14, E15, P2, S8, V4, V5
Pacific Ocean: C4, D4, P2
Indian Ocean: D4
Caribbean Sea: E15

9. GEOLOGICAL HISTORY

Paleozoic

World: V1
Atlantic Ocean: E3

Mesozoic

World: B7, L4, V1, W1
Atlantic Ocean: E3, E12, J4, J5, L5, N5, R5, R6, S2, T5
Pacific Ocean: E21, J7, L1, S2, S4

Cenozoic

World: B7, B10, L4, N2, V1, W1, W2
Atlantic Ocean: A2, D7, D8, E3, E12, E13, J4, J5, L5, M8, N5,
P2, S2, T5
Pacific Ocean: B8, B9, C5, D7, D8, E9, J7, M6, M8, N3, P3, S2,
S4, V2, W5

Pleistocene and Post-Pleistocene

World: B5
Atlantic Ocean: B6, D1, D2, D3, D5, E14, E15, H8
Pacific Ocean: B6, C4, H10

10. PROCESSES OF SEDIMENTATION AND DEPOSITION

Oceanic (Generalized Treatments)

World: B5, D6
Atlantic Ocean: D1, D2, D3, D6, E10, E19, H11, L7, M1, V3
Pacific Ocean: C5, D6, E9, H11, H14, L7
Indian Ocean: K3

Terrigenous Sedimentation

Atlantic Ocean: B2
Pacific Ocean: C4

Carbonate Sedimentation

World: B4, B11, G1, G2
Atlantic Ocean: D8
Pacific Ocean: B8, B9, D8, J7

Siliceous Sedimentation

World: C1, G1, P5

Volcanogenic Sedimentation

World: N2
Atlantic Ocean: S13
Pacific Ocean: N3

Turbidites and Debris Flows

World: K2, M10, P4
Atlantic Ocean: B3, E5, E6, E8, E13, H12, J1, J3, P2
Pacific Ocean: P2

PROCESSES OF SEDIMENTATION AND DEPOSITION (cont'd)

Current Effects

World: K2
Atlantic Ocean: E2, E7, E11, H6, H8, H9, J3

Sedimentation Rates

World: W2
Atlantic Ocean: D7, D8, E19
Pacific Ocean: D7, D8

11. POST-DEPOSITIONAL EFFECTS

Generalized Compaction, Lithification, and Diagenetic Effects: G4, L4

Carbonate Compaction, Lithification, and Diagenesis

World: G2, M12, N1

Pacific Ocean: M6, M11, S3

Silica Compaction, Lithification, and Diagenesis (including Chertification)

World: C1, G1, K1, P5

Atlantic Ocean: V5

Formation of Manganese Nodules: M9

Formation of Iron Rich Crusts: M8

12. SEDIMENT AND ROCK PROPERTIES

Models of Physical Properties of Sediments (especially Velocity and Density)

World: B12, G3, G4, H2, H3, H4, H19, L2, M2, M3, R3, S14, W4

Atlantic Ocean: A1, H15, H16, K4, N5, R4, S2, T6

Pacific Ocean: A1, H2, H5, H17, H18, J6, J7, M5, R1, S2, S3, S4, S12, T10, W6

Indian Ocean: A1, H5, S2

Mediterranean Sea: A1

Lithostratigraphy (Both Fine Scale and Coarse Scale)

World: L4

Atlantic Ocean: E1, E4, E12, E17, J5, K4, M14, N5, P2, R4, R5, R6, S8, T5, V3, V5

Pacific Ocean: E1, E17, K5, L1, P2, S4, S5, W6

Indian Ocean: R6

Mediterranean Sea: R6

Acoustic Properties of Sedimentary Structures

Atlantic Ocean: D1, D3, D4, J3, L7

Pacific Ocean: D4, J2, L7, L8, M13

Indian Ocean: D4

Origin and Nature of Acoustic Reflectors

Atlantic Ocean: D1, D3, D4, E18, S11

Pacific Ocean: B9, D4, E9, H7, H18, K5, M4, M5, M7

Indian Ocean: D4

Origin and Nature of Major Acoustic Reflectors

Atlantic Ocean: E1, E12, L5, M14, S9, S10, T3, T7, T8, W3

Pacific Ocean: E1, R1

SEDIMENT AND ROCK PROPERTIES (cont'd)

Observations of Physical Properties of Sediments

World: C1, C3, G2, H3, H4, N1, N2, P4, P5, R3, W1, W4
Atlantic Ocean: A1, B2, B3, E7, E12, E15, E17, H9, H11, H12,
H13, L7, R2, R4, R6, S1, S6, S8, T4, T9, V3,
V4, V5
Pacific Ocean: A1, B8, E9, E17, F2, H1, H10, H11, H14, L3, L6,
L7, M6, M7, M11, M13, N3, N4, P1, P3, S3, T10,
V2
Indian Ocean: A1, R6
Mediterranean Sea: A1, H13, R6

Lateral Variations in Physical Properties

Atlantic Ocean: B2
Pacific Ocean: T10

Variations in Lithology versus Time

Atlantic Ocean: T1, T2

REFERENCES AND BIBLIOGRAPHY

- A1 Anderson, R. S., 1974. "Statistical Correlation of Physical Properties and Sound Velocity in Sediments," in Physics of Sound in Marine Sediments, L. Hampton, Ed. (Plenum Press, New York), pp. 481-518.
- A2 Asquith, S. M., 1979. "Nature and Origin of the Lower Continental Rise Hills off the East Coast of the United States," Mar. Geol. 32, 165-190.
- B1 Barash, M. S., and V. M. Lavrov, 1977. "On the Thickness of the Holocene Sediments within the Bottom Deposits of the Atlantic Ocean," Oceanology 17, 172-176.
- B2 Bennett, R. H., G. H. Keller, and R. F. Busby, 1970. "Mass Property Variability in Three Closely Spaced Deep-Sea Sediment Cores," J. Sed. Petrol. 40, 1038-1043.
- B3 Bennetts, K. R. W., and O. H. Pilkey, 1976. "Characteristics of Three Turbidites, Hispaniola-Caicos Basin," Geol. Soc. Am. Bull. 87, 1291-1300.
- B4 Berger, W. H., 1970. "Biogenous Deep-Sea Sediments: Fractionation by Deep-Sea Circulation," Geol. Soc. Am. Bull. 81, 1385-1402.
- B5 Berger, W. H., 1974. "Deep-Sea Sedimentation," in The Geology of Continental Margins, C. A. Burk and C. L. Drake, Eds. (Springer-Verlag, New York), pp. 213-241.
- B6 Berger, W. H., 1978. "Sedimentation of Deep-Sea Carbonate: Maps and Models of Variations and Fluctuations," J. Foraminiferal Res. 8, 286-302.
- B7 Berger, W. H., 1979. abs. "Deep-Sea Drilling and Major Themes of Ocean Evolution," Am. Assoc. Pet. Geol. Bull. 63, 419.
- B8 Berger, W. H., and L. A. Mayer, 1977. abs. "Deep Sea Sediments: Acoustic Reflectors and Lysocline Fluctuations," Eos 58, No. 6, 405.
- B9 Berger, W. H., and L. A. Mayer, 1978, "Deep-Sea Carbonates: Acoustic Reflectors and Lysocline Fluctuations," Geology 6, 11-15.

- B10 Berger, W. H., E. Vincent, and H. R. Thierstein, 1981. "The Deep-Sea Record: Major Steps in Cenozoic Ocean Evolution," in The DSDP: A Decade of Progress, J. E. Warme et al., Eds., Spec. Publs., Soc. Econ. Paleontologists and Mineralogists, No. 32, pp. 489-504.
- B11 Berger, W. H., and E. L. Winterer, 1974. "Plate Stratigraphy and the Fluctuating Carbonate Line," in Pelagic Sediments on Land and under the Sea, K. J. Hsu and H. Jenkyns, Eds., Spec. Publs., Intl. Assoc. Sediment., Vol. 1, pp. 11-48.
- B12 Bryan, G. M., 1974. "Sonobuoy Measurements in Thin Layers," in Physics of Sound in Marine Sediments, L. Hampton, Ed. (Plenum Press, New York), pp. 119-130.
- C1 Calvert, S. E., 1974. "Deposition and Diagenesis of Silica in Marine Sediments," in Pelagic Sediments on Land and under the Sea, K. J. Hsu and H. Jenkyns, Eds., Spec. Publs., Intl. Assoc. Sediment., Vol. 1, pp. 273-299.
- C2 Chen, Y. H., and T. W. C. Hilde, 1979. abs. "Sediment Distribution and Structure of Shatsky Plateau," Eos 60, No. 46, 950.
- C3 Clark, S. P., Jr., Ed., 1966. Handbook of Physical Constants, revised edition, Geol. Soc. Am. Mem. 97, 587 pages.
- C4 Conolly, J. R., and M. Ewing, 1970. "Ice-Rafted Detritus in Northwest Pacific Deep-Sea Sediments," in Geological Investigations of the North Pacific, J. D. Hays, Ed., Geol. Soc. Am. Mem. 126, pp. 219-231.
- C5 Corliss, B. H., and C. D. Hollister, 1979. abs. "Cenozoic Sedimentation in the Central North Pacific," Eos 60, No. 18, 277-278.
- D1 Damuth, J. E., 1975. "Echo Character of the Western Equatorial Atlantic Floor and its Relationship to the Dispersal and Distribution of Terrigenous Sediments," Mar. Geol. 18, 17-45.
- D2 Damuth, J. E., 1977. "Late Quaternary Sedimentation in the Western Equatorial Atlantic," Geol. Soc. Am. Bull. 88, 695-710.
- D3 Damuth, J. E., 1978. "Echo Character of the Norwegian-Greenland Sea: Relationship to Quaternary Sedimentation," Mar. Geol. 28, 1-36.
- D4 Damuth, J. E., 1980. "Use of High-Frequency (3.5-12 kHz) Echograms in the Study of Near-Bottom Sedimentation Processes in the Deep-Sea: A Review," Mar. Geol. 38, 51-75.
- D5 Damuth, J. E., and R. W. Fairbridge, 1970. "Equatorial Atlantic Deep-Sea Arkosic Sands and Ice-Age Aridity in Tropical South America," Geol. Soc. Am. Bull. 81, 189-206.

- D6 Davies, T. A., and D. S. Gorsline, 1976. "Oceanic Sediments and Sedimentary Processes," in Chemical Oceanography, Vol. 5, 2nd ed., J. P. Riley and R. Chester, Eds. (Academic Press, London), pp. 17-47.
- D7 Davies, T. A., W. W. Hay, J. R. Southam, and T. R. Worsley, 1977. "Estimates of Cenozoic Oceanic Sedimentation Rates," Science 197, 53-55.
- D8 Davies, T. A., and T. R. Worsley, 1981. "Paleoenvironmental Implications of Oceanic Carbonate Sedimentation Rates," in The DSDP: A Decade of Progress, J. E. Warme et al., Eds., Spec. Publs., Soc. Econ. Paleontologists and Mineralogists, No. 32, pp. 169-179.
- E1 Edgar, N. T., 1976. "Acoustic Stratigraphy in the Deep Oceans," in The Geology of Continental Margins, C. A. Burk and C. L. Drake, Eds. (Springer-Verlag, New York), pp. 243-246.
- E2 Eittrem, S., M. Ewing, and E. M. Thorndike, 1969. "Suspended Matter along the Continental Margin of the North American Basin," Deep-Sea Res. 16, 613-624.
- E3 Eldholm, O., and M. Talwani, 1977. "Sediment Distribution and Structural Framework of the Barents Sea," Geol. Soc. Am. Bull. 88, 1015-1029.
- E4 Eldholm, O., and C. C. Windisch, 1974. "Sediment Distribution in the Norwegian-Greenland Sea," Geol. Soc. Am. Bull. 85, 1661-1676.
- E5 Elmore, R. D., 1976. abs. "Extensive Horizontal Continuity of a Single Turbidite, Hatteras Abyssal Plain," Geol. Soc. Am. Abstr. 8, 167.
- E6 Embley, R. W., 1976. "New Evidence for Occurrence of Debris Flow Deposits in the Deep Sea," Geology 4, 371-374.
- E7 Embley, R. W., P. J. Hoose, P. Lonsdale, L. Mayer, and B. E. Tucholke, 1980. "Furrowed Mud Waves on the Western Bermuda Rise," Geol. Soc. Am. Bull. 91, 731-740.
- E8 Embley, R. W., and R. D. Jacobi, 1977. "Distribution and Morphology of Large Submarine Sediment Slides and Slumps on Atlantic Continental Margins," in Marine Geotechnology, Vol. 2, (Crane, Russak & Co., Inc., New York), pp. 205-228.
- E9 Embley, R. W., and D. A. Johnson, 1980. "Acoustic Stratigraphy and Biostratigraphy of Neogene Carbonate Horizons in the North Equatorial Pacific," J. Geophys. Res. 85, No. B10, 5423-5437.
- E10 Embley, R. W., and M. G. Langseth, 1977. "Sedimentation Processes on the Continental Rise of Northeastern South America," Mar. Geol. 25, 279-297.

- E11 Embley, R. W., P. D. Rabinowitz, and R. D. Jacobi, 1978. "Hyperbolic Echo Zones in the Eastern Atlantic and the Structure of the Southern Madeira Rise," *Earth and Planet. Sci. Lett.* 41, 419-433.
- E12 Emery, K. O., and E. Uchupi, 1972. "Western North Atlantic: Topography, Rocks, Structure, Water, Life, and Sediments," *Am. Assoc. Pet. Geol. Mem.* 17, 532 pages.
- E13 Ericson, D. B., M. Ewing, and B. C. Heezen, 1952. "Turbidity Currents and Sediments in North Atlantic," *Am. Assoc. Pet. Geol. Bull.* 36, 489-511.
- E14 Ericson, D. B., M. Ewing, and G. Wollin, 1964. "Sediment Cores from the Arctic and Subarctic Seas," *Science* 144, 1183-1192.
- E15 Ericson, D. B., M. Ewing, G. Wollin, and B. C. Heezen, 1961. "Atlantic Deep-Sea Sediment Cores," *Geol. Soc. Am. Bull.* 72, 193-286.
- E16 Erlandson, D., 1975. abs. "Sediment Accumulation in Structural Traps in the Southern Bauer Basin, Southeast Pacific," *Eos* 56, No. 6, 445.
- E17 Ewing, J. I., and M. Ewing, 1971. "Seismic Reflection," in *The Sea*, Vol. 4, Part 1, A. E. Maxwell, Ed. (John Wiley & Sons, New York), pp. 1-51.
- E18 Ewing, J. I., C. C. Windisch, and M. Ewing, 1970. "Correlation of Horizon A with JOIDES Bore-Hole Results," *J. Geophys. Res.* 75, 5645-5653.
- E19 Ewing, M., G. Carpenter, C. C. Windisch, and J. I. Ewing, 1973. "Sediment Distribution in the Oceans: The Atlantic," *Geol. Soc. Am. Bull.* 84, 71-88.
- E20 Ewing, M., J. I. Ewing, and M. Talwani, 1964. "Sediment Distribution in the Oceans: The Mid-Atlantic Ridge," *Geol. Soc. Am. Bull.* 75, 17-36.
- E21 Ewing, M., T. Saito, J. I. Ewing, and L. Burckle, 1966. "Lower Cretaceous Sediments from the Northwest Pacific," *Science* 152, 751-755.
- F1 Fischer, A. G., B. C. Heezen, R. E. Boyce, D. Bukry, R. G. Douglas, R. E. Garrison, S. A. Kling, V. Krashennnikov, A. P. Lisitzen, and A. C. Pimm, 1970. "Geological History of the Western North Pacific," *Science* 168, 1210-1214.
- F2 Furumoto, A. S., J. P. Webb, M. E. Odegaard, and D. M. Hussong, 1976. "Seismic Studies on the Ontong Java Plateau, 1970," *Tectonophysics* 34, 71-90.

- G1 Garrison, R. E., 1974. "Radiolarian Cherts, Pelagic Limestones, and Igneous Rocks in Eugeosynclinal Assemblages," in Pelagic Sediments on Land and under the Sea, K. J. Hsu and H. Jenkyns, Eds., Spec. Publs., Intl. Assoc. Sediment., Vol. 1, pp. 367-399.
- G2 Garrison, R. E., 1981. "Diagenesis of Oceanic Carbonate Sediments: A Review of the DSDP Perspective," in The DSDP: A Decade of Progress, J. E. Warme et al., Eds., Spec. Publs., Soc. Econ. Paleontologists and Mineralogists, No. 32, pp. 181-207.
- G3 Gorsline, D. S., 1980. "Deep-Water Sedimentologic Conditions and Models," Mar. Geol. 38, 1-21.
- G4 Gregory, A. R., 1977. "Aspects of Rock Physics from Laboratory and Log Data that are Important to Seismic Interpretation," in Seismic Stratigraphy--Applications to Hydrocarbon Exploration, C. E. Payton, Ed., Am. Assoc. Pet. Geol. Mem. 26, pp. 15-46.
- G5 Grow, J. A., and R. G. Markl, 1977. "IPOD-USGS Multichannel Seismic Reflection Profile from Cape Hatteras to the Mid-Atlantic Ridge, Geology 5, 625-630.
- H1 Hamilton, E. L., 1970. "Sound Velocity and Related Properties of Marine Sediments, North Pacific," J. Geophys. Res. 75, 4423-4446.
- H2 Hamilton, E. L., 1971. "Prediction of In-Situ Acoustic and Elastic Properties of Marine Sediments," Geophysics 36, 266-284.
- H3 Hamilton, E. L., 1974. "Prediction of Deep-Sea Sediment Properties: State-of-the-Art," in Deep-Sea Sediments, Marine Science, Vol. 2, A. L. Inderbitzen, Ed. (Plenum Press, New York), pp. 1-44.
- H4 Hamilton, E. L., 1980. "Geoacoustic Modeling of the Sea Floor," J. Acoust. Soc. Am. 68, 1313-1340.
- H5 Hamilton, E. L., D. G. Moore, E. C. Buffington, and P. L. Sherrer, 1974. "Sediment Velocities from Sonobuoys: Bay of Bengal, Bering Sea, Japan Sea, and North Pacific," J. Geophys. Res. 79, 2653-2668.
- H6 Heezen, B. C., C. D. Hollister, and W. F. Ruddiman, 1966. "Shaping of the Continental Rise by Deep Geostrophic Currents," Science 152, 502-508.
- H7 Herbst, K., H. Beiersdorf, and U. Von Stackelberg, 1980. "Correlation of Acoustic and Lithologic Facies within the Clarion Fracture Zone SSE of Hawaii," "Meteor" Forschungsergeb., Reihe C, No. 33, 1-13.
- H8 Hollister, C. D., R. D. Flood, D. A. Johnson, P. Lonsdale, and J. B. Southard, 1974. "Abyssal Furrows and Hyperbolic Echo Traces on the Bahama Outer Ridge," Geology 2, 395-400.

- H9 Hollister, C. D., and B. C. Heezen, 1972. "Geologic Effects of Ocean Bottom Currents: Western North Atlantic," in Studies in Physical Oceanography--A Tribute to George Wust on his 80th Birthday, Vol. 2 (Gordon & Breach, New York), pp. 37-66.
- H10 Horn, D. R., M. N. Delach, and B. M. Horn, 1969. "Distribution of Volcanic Ash Layers and Turbidites in the North Pacific," Geol. Soc. Am. Bull. 80, 1715-1724.
- H11 Horn, D. R., M. N. Delach, and B. M. Horn, 1974. "Physical Properties of Sedimentary Provinces, North Pacific and North Atlantic Oceans," in Deep-Sea Sediments, Marine Science, Vol. 2, A. L. Inderbitzen, Ed. (Plenum Press, New York), pp. 417-441.
- H12 Horn, D. R., M. Ewing, B. M. Horn, and M. N. Delach, 1971. "Turbidites of the Hatteras and Sohm Abyssal Plains, Western North Atlantic," Mar. Geol. 11, 287-323.
- H13 Horn, D. R., B. M. Horn, and M. N. Delach, 1968. "Correlation between Acoustical and other Physical Properties of Deep-Sea Cores," J. Geophys. Res. 73, 1939-1957.
- H14 Horn, D. R., B. M. Horn, and M. N. Delach, 1970. "Sedimentary Provinces of the North Pacific," in Geological Investigations of the North Pacific, J. D. Hays, Ed., Geol. Soc. Am. Mem. 126, pp. 1-21.
- H15 Houtz, R. E., 1980. "Crustal Structure of the North Atlantic on the Basis of Large-Airgun-Sonobuoy Data," Geol. Soc. Am. Bull. 91, Part I, 406-413.
- H16 Houtz, R. E., and J. I. Ewing, 1963. "Detailed Sedimentary Velocities from Seismic Refraction Profiles in the Western North Atlantic," J. Geophys. Res. 68, 5235-5258.
- H17 Houtz, R. E., J. I. Ewing, and P. Buhl, 1970. "Seismic Data from Sonobuoy Stations in the Northern and Equatorial Pacific," J. Geophys. Res. 75, 5093-5111.
- H18 Houtz, R. E., and W. J. Ludwig, 1979. "Distribution of Reverberant Subbottom Layers in the Southwest Pacific Basin," J. Geophys. Res. 84, No. B7, 3497-3504.
- H19 Hubral, P., and T. Krey, 1980. Interval Velocities from Seismic Reflection Time Measurements, K. L. Larner, Ed. (Soc. Expl. Geophysicists, Tulsa, Oklahoma), 203 pages.
- J1 Jacobi, R. D., 1976. "Sediment Slides on the Northwestern Continental Margin of Africa," Mar. Geol. 22, 157-173.
- J2 Jacobi, R. D., and C. L. Mrozowski, 1979. "Sediment Slides and Sediment Waves in the Bonin Trough, Western Pacific," Mar. Geol. 29, M1-M9.

- J3 Jacobi, R. D., P. D. Rabinowitz, and R. W. Embley, 1975. "Sediment Waves on the Moroccan Continental Rise," *Mar. Geol.* 19, M61-M67.
- J4 Jansa, L. F., 1979. abs. Mesozoic-Cenozoic Sedimentary Formations of North American Basin, Western North Atlantic," *Am. Assoc. Pet. Geol. Bull.* 63, 475.
- J5 Jansa, L. F., and R. W. MacQueen, 1978. "Stratigraphy and Hydrocarbon Potential of the Central North Atlantic Basin," *Geoscience Can.* 5, 176-183.
- J6 Johnson, T. C., and E. L. Hamilton, 1977. abs. "Compressional Wave Velocities in Calcareous Ooze and Chalk," *Eos* 58, No. 6, 405.
- J7 Johnson, T. C., E. L. Hamilton, R. T. Bachman, and W. H. Berger, 1978. "Sound Velocities in Calcareous Oozes and Chalks from Sonobuoy Data: Ontong Java Plateau, Western Equatorial Pacific," *J. Geophys. Res.* 83, No. B1, 283-288.
- K1 Keene, J. B., 1978. abs. "Deep-Sea Sediment and the Chert Problem," *Am. Assoc. Pet. Geol. Bull.* 62, 528.
- K2 Kelling, G., and D. J. Stanley, 1978. "Sedimentation in Submarine Canyons, Fans, and Trenches: Appraisal and Augury," in *Sedimentation in Submarine Canyons, Fans, and Trenches*, D. J. Stanley and G. Kelling, Eds. (Dowden, Hutchinson, and Ross, Inc., Stroudsburg, Pennsylvania), pp. 377-388.
- K3 Kidd, R. B., and O. E. Weser, 1974. abs. "A Preliminary Synthesis of Sediments Recovered by the Deep Sea Drilling Project in the Indian Ocean," *Geol. Soc. Am. Abstr.* 6, 824-825.
- K4 Klitgord, K. D., and J. A. Grow, 1980. "Jurassic Seismic Stratigraphy and Basement Structure of Western Atlantic Magnetic Quiet Zone," *Am. Assoc. Pet. Geol. Bull.* 64, 1658-1680.
- K5 Kroenke, L. W., 1972. "Geology of the Ontong Java Plateau," Dissertation, The University of Hawaii, Honolulu, Hawaii, 119 pages.
- L1 Larson, R. L., and S. O. Schlanger, 1981. "Cretaceous Volcanism and Jurassic Magnetic Anomalies in the Nauru Basin, Western Pacific Ocean," *Geology* 9, 480-484.
- L2 LePichon, X., J. I. Ewing, and R. E. Houtz, 1968. "Deep-Sea Sediment Velocity Determination Made while Reflection Profiling," *J. Geophys. Res.* 73, 2597-2614.
- L3 Lee, H. J., 1980. "Physical Properties of Northeast Pacific Sediments Related to Sedimentary Environment and Geologic History," *Mar. Geol.* 38, 141-164.

- L4 Levitan, M. A., 1979. "Certain Aspects of Postdepositional Alterations in Oceanic Sediments (Based on Deep-Water Drilling Results)," *Lithol. Min. Resources* 14, 523-535.
- L5 Levitan, M. A., 1979. "Gaps in the Sedimentary Cover of the Atlantic Ocean," *Intl. Geol. Rev.* 23, 505-509.
- L6 Lineberger, P. H., 1975. "Sedimentary Processes and Pelagic Turbidites in the East Central Pacific," Master's Thesis, The University of Hawaii, Honolulu, Hawaii, 116 pages.
- L7 Lonsdale, P. F., and F. N. Spiess, 1977. "Abyssal Bedforms Explored with a Deeply Towed Instrument Package," *Mar. Geol.* 23, 57-75.
- L8 Lonsdale, P. F., R. C. Tyce, and F. N. Spiess, 1974. "Near-Bottom Acoustic Observations of Abyssal Topography and Reflectivity," in *Physics of Sound in Marine Sediments*, L. Hampton, Ed. (Plenum Press, New York), pp. 293-317.
- M1 Marks, N. S., 1981. "Sedimentation on New Ocean Crust: The Mid-Atlantic Ridge at 37°N," *Mar. Geol.* 43, 65-82.
- M2 Matthews, J. E., 1978. abs. "A Preliminary Model for Compressional Wave Velocity in Deep-Sea Sediments," *Eos* 59, No. 4, 320.
- M3 Matthews, J. E., 1980. "Heuristic Physical Property Model for Marine Sediments," *J. Acoust. Soc. Am.* 68, 1361-1370.
- M4 Mayer, L. A., 1978. abs. "High-Resolution Acoustic Stratigraphy in Carbonates," *Eos* 59, No. 4, 299.
- M5 Mayer, L. A., 1979. "The Origin of Fine Scale Acoustic Stratigraphy in Deep-Sea Carbonates," *J. Geophys. Res.* 84, No. B11, 6177-6184.
- M6 Mayer, L. A., 1979. "Deep-Sea Carbonates: Acoustic, Physical, and Stratigraphic Properties," *J. Sed. Petrol.* 49, 819-836.
- M7 Mayer, L. A., 1980. "Deep-Sea Carbonates: Physical Property Relationships and the Origin of High-Frequency Acoustic Reflectors," *Mar. Geol.* 38, 165-183.
- M8 McGeary, D. F. R., and J. E. Damuth, 1973. "Postglacial Iron-Rich Crusts in Hemipelagic Deep-Sea Sediment," *Geol. Soc. Am. Bull.* 84, 1201-1212.
- M9 Menard, J. W., 1976. "Time, Chance and the Origin of Manganese Nodules," *Am. Sci.* 64, 519-529.
- M10 Middleton, G. V., and A. H. Bouma, 1973. "Turbidites and Deep Water Sedimentation," in *Soc. Econ. Paleontologists and Mineralogists, Pacific Section, Short Course Notes*, pp. 79-118.

- M11 Milholland, P., M. H. Manghnani, S. O. Schlanger, and G. H. Sutton, 1980. "Geoacoustic Modeling of Deep-Sea Carbonate Sediments," *J. Acoust. Soc. Am.* 68, 1351-1360.
- M12 Milliman, J. D., 1974. "Precipitation and Cementation of Deep-Sea Carbonate Sediments," in *Deep-Sea Sediments*, Marine Science, Vol. 2, A. L. Inderbitzen, Ed. (Plenum Press, New York), pp. 463-476.
- M13 Moore, T. C., Jr., and G. R. Heath, 1967. "Abyssal Hills in the Central Equatorial Pacific: Detailed Structure of the Sea Floor and Subbottom Reflectors," *Mar. Geol.* 5, 161-179.
- M14 Mountain, G., and B. E. Tucholke, 1977. abs. "Horizon: Acoustic Character and Distribution in the Western North Atlantic," *Eos* 58, No. 6, 406.
- N1 Neugebauer, J., 1974. "Some Aspects of Cementation in Chalk," in *Pelagic Sediments on Land and under the Sea*, K. J. Hsu and H. Jenkyns, Eds., *Spec. Publs. Intl. Assoc. Sediment.*, Vol. 1, pp. 149-176.
- N2 Ninkovich, D., and J. D. Hays, 1973. abs. "World-Wide Distribution of Volcanic Ash-Layers in Pleistocene Deep-Sea Cores," *Geol. Soc. Am. Abstr.* 5, 751.
- N3 Ninkovich, D., and J. H. Robertson, 1975. "Volcanogenic Effects on the Rates of Deposition of Sediments in the Northwest Pacific Ocean," *Earth and Plan. Sci. Lett.* 27, 127-136.
- N4 Ninkovich, D., K. Venkatarathnam, J. Robertson, and C. Parmenter, 1973. abs. "Methods of Correlation and Dating of Volcanic Ash Layers in Northwest Pacific Deep-Sea Cores," *Geol. Soc. Am. Abstr.* 5, 752.
- N5 Noltimier, H. C., 1974. "The Geophysics of the North Atlantic," in *The Ocean Basins and Margins*, Vol. 2, *The North Atlantic*, A. E. M. Nairn and F. G. Stehli, Eds. (Plenum Press, New York), pp. 539-588.
- P1 Petrova, V. V., B. I. Voronin, and N. D. Sevebrennikova, 1981. trans. 1982. "Neogene-Quaternary Deposition in the Central Part of the Northwest Pacific," *Lith. and Min. Resources* 16, 230-245.
- P2 Pilkey, O. H., S. D. Locker, and W. J. Cleary, 1980. "Comparison of Sand-Layer Geometry on Flat Floors of 10 Modern Depositional Basins," *Am. Assoc. Pet. Geol. Bull.* 64, 841-856.
- P3 Pimm, A. C., 1972. "Shatsky Rise Sediments: Correlation of Lithology and Physical Properties with Geologic History," *Am. Assoc. Pet. Geol. Bull.* 56, 364-370.

- P4 Piper, D. J. W., 1978. "Turbidite Muds and Silts on Deep Sea Fans and Abyssal Plains," in Sedimentation in Submarine Canyons, Fans, and Trenches, D. J. Stanley and G. Kelling, Eds. (Dowden, Hutchinson and Ross, Inc., Stroudsburg, Pennsylvania), pp. 163-176.
- P5 Pisciotto, K. A., 1981. "Distribution, Thermal Histories, Isotopic Compositions, and Reflection Characteristics of Siliceous Rocks Recovered by the Deep Sea Drilling Project," in The DSDP: A Decade of Progress, J. E. Warme et al., Eds., Spec. Publs., Soc. Econ. Paleontologists and Mineralogists, No. 32, pp. 129-147.
- R1 Rabinowitz, P. D., and A. Cooper, 1977. "Structure and Sediment Distribution in the Western Bering Sea," Mar. Geol. 24, 309-320.
- R2 Rhoads, D. C., 1974. "Organism-Sediment Relations on the Muddy Sea Floor," Oceanogr. Mar. Bio. Am. Rev. 12, 263-300.
- R3 Richardson, M. D., and D. K. Young, 1980. "Geoacoustic Models and Bioturbation," Mar. Geol. 38, 205-218.
- R4 Rona, P. A., 1980. "The Central North Atlantic Ocean Basin and Continental Margins: Geology, Geophysics, Geochemistry, and Resources, Including the Trans-Atlantic Geotraverse (TAG)," NOAA Atlas 3 (chart), Environmental Research Laboratories, National Oceanic and Atmospheric Administration, U.S. Dept. of Commerce (U.S. Government Printing Office, Washington, D.C.), 99 pages.
- R5 Roth, P. H., and J. L. Bowdler, 1981. "Middle Cretaceous Calcareous Nannoplankton Biogeography and Oceanography of the Atlantic Ocean," in The DSDP: A Decade of Progress, J. E. Warme et al., Eds., Spec. Publs., Soc. Econ. Paleontologists and Mineralogists, No. 32, pp. 517-546.
- R6 Ryan, W. B. F., and M. B. Cita, 1977. "Ignorance Concerning Episodes of Ocean-Wide Stagnation," Mar. Geol. 23, 197-215.
- S1 Salisbury, M. H., R. Stephen, N. I. Christensen, J. Francheteau, Y. Hamano, M. Hobart, and D. Johnson, 1979. "The Physical State of the Upper Levels of Cretaceous Oceanic Crust from the Results of Logging, Laboratory Studies and the Oblique Seismic Experiment at DSDP Sites 417 and 418," in Deep Drilling Results in the Atlantic Ocean: Ocean Crust, M. Talwani, C. G. Harrison, and D. E. Hayes, Eds., Maurice Ewing Series, Vol. 2 (American Geophysical Union, Washington, D.C.), pp. 113-134.
- S2 Schlanger, S. O., 1981. "Shallow-Water Limestones in Oceanic Basins as Tectonic and Paleooceanographic Indicators," in The DSDP: A Decade of Progress, J. E. Warme et al., Eds., Spec. Publs., Soc. Econ. Paleontologists and Mineralogists, No. 32, pp. 209-226.
- S3 Schlanger, S. O., and R. G. Douglas, 1974. "The Pelagic Ooze-Chalk-Limestone Transition and Its Implications for Marine

- Stratigraphy," in Pelagic Sediments on Land and under the Sea, K. J. Hsu and H. Jenkyns, Eds., Spec. Publs., Intl. Assoc. Sediment., Vol. 1, pp. 117-148.
- S4 Scholl, D. W., E. C. Buffington, and M. S. Marlow, 1975. "Plate Tectonics and the Structural Evolution of the Aleutian-Bering Sea Region," in Contributions to the Geology of the Bering Sea and Adjacent Regions, R. B. Forbes, Ed., Geol. Soc. Am. Special Paper 151, pp. 1-31.
- S5 Scholl, D. W., J. R. Hein, M. Marlow, and E. C. Buffington, 1977. "Meiji Sediment Tongue: North Pacific Evidence for Limited Movement between the Pacific and North American Plates," Geol. Soc. Am. Bull. 88, 1567-1576.
- S6 Schreiber, B. C., 1968. "Sound Velocity in Deep Sea Sediments," J. Geophys. Res. 73, 1259-1268.
- S7 Scripps Institution of Oceanography, University of California, "Initial Core Descriptions" (various DSDP legs) (The University of California Press, San Diego).
- S8 Seiglie, G. A., P. N. Froelich, and O. H. Pilkey, 1976. "Deep-Sea Sediments of Navidad Basin: Correlation of Sand Layers," Deep-Sea Res. 23, 89-101.
- S9 Shipley, T. H., and J. S. Watkins, 1978. "Fine-Scale Seismic Stratigraphy in the Western North Atlantic," Geology 6, 635-639.
- S10 Shipley, T. H., and J. L. Worzel, 1976. abs. "Reflector Geometry of a Portion of the Lower Continental Rise-Abyssal Plain Contact, Western North Atlantic," Geol. Soc. Am. Abstr. 8, 1104.
- S11 Silva, A. J., C. D. Hollister, E. P. Laine, and R. Flood, 1976. abs. "Lateral Coherence of Geotechnical and Acoustic Properties at Two Giant Piston Core Sites in the Northeastern Atlantic," Eos 57, No. 4, 269.
- S12 Solov'yeva, I. A., 1976. "Deep Structure of the Pacific Crust," Geotectonics 10, 157-168.
- S13 Stanley, D. J., and P. T. Taylor, 1981. "Volcanogenic Sediment and Proximal versus Distal Provenance in Abyssal Plains," Mar. Geol. 43, M29-M38.
- S14 Stoll, R. D., J. I. Ewing, and G. M. Bryan, 1971. "Anomalous Wave Velocities in Sediments Containing Gas Hydrates," J. Geophys. Res. 76, 2090-2094.
- T1 Thiede, J., T. Agdestein, and J. E. Strand, 1980. "Depth Distribution of Calcareous Sediments in the Mesozoic and Cenozoic North Atlantic Ocean," Earth and Plan. Sci. Lett. 47, 416-422.

- T2 Thiede, J., J. E. Strand, and T. Agdestein, 1981. "The Distribution of Major Pelagic Sediment Components in the Mesozoic and Cenozoic North Atlantic Ocean," in The DSDP: A Decade of Progress, J. E. Warme et al., Eds., Spec. Publs., Soc. Econ. Paleontologists and Mineralogists, No. 32, pp. 67-90.
- T3 Tuholke, B. E., 1979. abs. "Geologic Significance of Sedimentary Reflectors in Deep Western North Atlantic," Am. Assoc. Pet. Geol. Bull. 63, 543.
- T4 Tuholke, B. E., 1980. "Acoustic Environment of the Hatteras and Nares Abyssal Plains, Western North Atlantic Ocean, Determined from Velocities and Physical Properties of Sediment Cores," J. Acoust. Soc. Am. 68, 1376-1390.
- T5 Tuholke, B. E., 1981. "Geologic Significance of Seismic Reflectors in the Deep Western North Atlantic Basin," in The DSDP: A Decade of Progress, J. E. Warme et al., Eds., Spec. Publs., Soc. Econ. Paleontologists and Mineralogists, No. 32, pp. 23-37.
- T6 Tuholke, B. E., R. E. Houtz, and W. J. Ludwig, 1979. abs. "Sediment Thickness Patterns in the Western North Atlantic Ocean," Geol. Soc. Am. Abstr. 11, 530.
- T7 Tuholke, B. E., and G. Mountain, 1977. abs. "The Horizon-A Complex: Lithostratigraphic Correlation and Paleoceanographic Significance of Reflections in the Western North Atlantic," Eos 58, No. 6, 406.
- T8 Tuholke, B. E., and G. Mountain, 1977. abs. "Depositional Patterns and Depositional Environment of Cretaceous Black Clays in the Western North Atlantic," Geol. Soc. Am. Abstr. 9, 1207.
- T9 Tuholke, B. E., and D. J. Shirley, 1979. "Comparison of Laboratory and In Situ Compressional-Wave Velocity Measurements on Sediment Cores from the Western North Atlantic," J. Geophys. Res. 84, No. B2, 687-695.
- T10 Tyce, R. C., 1976. "Near-Bottom Observations of 4 kHz Acoustic Reflectivity and Attenuation," Geophysics 41, 673-699.
- V1 Vail, P. R., R. M. Mitchum, Jr., and S. Thompson, III, 1977. "Part 4: Global Cycles of Relative Changes of Sea Level," in Seismic Stratigraphy--Applications to Hydrocarbon Explorations, C. E. Payton, Ed., Am. Assoc. Pet. Geol. Mem. 26, pp. 83-97.
- V2 Van Andel, Tj. H., G. R. Heath, and T. C. Moore, Jr., 1975. Cenozoic History and Paleoceanography of the Central Equatorial Pacific Ocean, Geol. Soc. Am. Mem. 143, 134 pages.
- V3 Van Andel, Tj. H., and P. D. Komar, 1969. "Ponded Sediments of the Mid-Atlantic Ridge between 22° and 23° North Latitude," Geol. Soc. Am. Bull. 80, 1163-1190.

- V4 Van Tassell, J., 1981. "Silver Abyssal Plain Carbonate Turbidite: Flow Characteristics," *J. Geol.* 89, 317-333.
- V5 Von Rad, U., and H. Rosch, 1974. "Petrography and Diagenesis of Deep-Sea Cherts from the Central Atlantic," in Pelagic Sediments on Land and under the Sea, K. J. Hsu and H. Jenkyns, Eds., Spec. Publs., Intl. Assoc. Sediment., Vol. 1, pp. 327-347.
- W1 Weissert, H., 1981. "The Environment of Deposition of Black Shales in the Early Cretaceous: An Ongoing Controversy," in The DSDP: A Decade of Progress, J. E. Warme et al., Eds., Spec. Publs., Soc. Econ. Paleontologists and Mineralogists, No. 32, pp. 547-560.
- W2 Whitman, J. M., and T. A. Davies, 1979. "Cenozoic Oceanic Sedimentation Rates: How Good are the Data?" *Mar. Geol.* 30, 269-284.
- W3 Windisch, C. C., R. J. Leyden, J. L. Worzel, T. Saito, and J. I. Ewing, 1968. "Investigation of Horizon Beta," *Science* 162, 1473-1479.
- W4 Wise, S. W., Jr., and F. M. Weaver, 1974. "Chertification of Oceanic Sediments," in Pelagic Sediments on Land and under the Sea, K. J. Hsu and H. Jenkyns, Eds., Spec. Publs., Intl. Assoc. Sediment, Vol. 1, pp. 301-326.
- W5 Worsley, T. R., and T. A. Davies, 1979. "Cenozoic Sedimentation in the Pacific Ocean: Steps toward a Quantitative Evaluation," *J. Sed. Petrol.*, 1131-1146.
- W6 Wroldstad, K. H., and S. H. Johnson, 1976. abs. "Sediment and Basement Velocity Profile across the Northern Nazca Plate and Panama Basin," *Eos* 57, No. 4, 333.

28 July 1983

DISTRIBUTION LIST FOR
ARL-TR-83-25
UNDER CONTRACT N00014-78-C-0113

Copy No.

1 Commanding Officer
2 Naval Ocean Research and Development Activity
3 NSTL Station, MS 39529
4 Attn: E. D. Chaika (Code 530)
5 W. A. Kuperman (Code 320)
CDR M. McCallister (Code 522)
J. Matthews (Code 362)
W. W. Worsley (Code 110A)

6 Chief of Naval Research
Department of the Navy
Arlington, VA 22217
Attn: M. McKisic (Code 4250A)

7 Office of Naval Research Detachment
Naval Ocean Research and Development Activity
NSTL Station, MS 39529
Attn: G. Morris (Code 425GG)

8 Office of Naval Research
Branch Office, Chicago
Department of the Navy
536 South Clark Street
Chicago, IL 60605

9 Commanding Officer
10 Naval Electronic Systems Command
Department of the Navy
Washington, D.C. 20360
Attn: LCDR S. Hollis (Code 612)
CDR C. Spikes (PME 124-60)

11 Director
12 Naval Research Laboratory
Department of the Navy
Washington, D.C. 20375
Attn: B. B. Adams (Code 8160)
W. Mosley

Distribution list for ARL-TR-83-25 under Contract N00014-78-C-0113
(cont'd)

Copy No.

- 13 Commanding Officer
Naval Ocean Systems Center
Department of the Navy
San Diego, CA 92152
Attn: E. L. Hamilton
- 14 M. A. Pederson
- 15 H. P. Bucker
- 16 Commander
Naval Sea System Command
Department of the Navy
Washington, D.C. 20362
Attn: R. W. Farwell (Code 63RA)
- 17 Chief of Naval Operations
Department of the Navy
Washington, D.C. 20350
Attn: CAPT E. Young (OP 952D)
- 18 Chief of Naval Material
Department of the Navy
Washington, D.C. 20360
Attn: CAPT J. Harlett (MAT 0724)
- 19 Commander
Naval Surface Weapons Center
White Oak Laboratory
Department of the Navy
Silver Spring, MD 20910
- 20 Commander
David W. Taylor Naval Ship Research and
Development Center
Department of the Navy
Bethesda, MD 20034
- 21 Naval Oceanographic Office
Department of the Navy
NSTL Station, MS 39522
Attn: W. Jobst (Code 3400)
- 22 J. Allen

Distribution list for ARL-TR-83-25 under Contract N00014-78-C-0113
(cont'd)

Copy No.

- 23 Commander
Naval Air Development Center
Department of the Navy
Warminster, PA 18974
Attn: C. L. Bartberger
- 24 Officer in Charge
New London Laboratory
Naval Underwater Systems Center
Department of the Navy
New London, CT 06320
Attn: B. Cole
- 25 F. R. DiNapoli
- 26 Director Naval Warfare
Deputy Undersecretary Defense R&E
Room 3D1048, Pentagon
Washington, D.C. 20301
- 27 OASN (R,E&S)
Room 4D745, Pentagon
Washington, D.C. 20301
Attn: G. A. Cann
- 28 Superintendent
Naval Postgraduate School
Monterey, CA 93940
Attn: Library
- 29 Commander
Naval Coastal Systems Center
Department of the Navy
Panama City, FL 32407
Attn: G. McLeroy
- 30 Defense Advanced Research Projects Agency
1400 Wilson Blvd.
Arlington, VA 22209
Attn: CDR K. Evans (TT0)
- 31 Commander
Naval Intelligence Support Center
4301 Suitland Road
Washington, D.C. 20390

Distribution list for ARL-TR-83-25 under Contract N00014-78-C-0113
(cont'd)

Copy No.

32 - 43 Commanding Officer and Director
 Defense Information Service Center
 Cameron Station, Building 5
 5010 Duke Street
 Alexandria, VA 22314

 Woods Hole Oceanographic Institution
 86-95 Water Street
44 Woods Hole, MA 02543
 Attn: R. Spindel

 Science Applications, Inc.
 1710 Goodridge Drive
45 McLean, VA 22101
 Attn: C. Spofford

 Applied Research Laboratory
 The Pennsylvania State University
 P. O. Box 30
 State College, PA 16801
46 Attn: S. McDaniel

 Marine Physical Laboratory of
 The Scripps Institution of Oceanography
 The University of California, San Diego
 San Diego, CA 92132
47 Attn: F. Fisher
48 G. Shor

 Scripps Institution of Oceanography
 The University of California, San Diego
 La Jolla, CA 92037
49 Attn: Library
50 R. Tyce

 Bell Telephone Laboratories, Inc.
 Whippany Road
 Whippany, NJ 07961
51 Attn: A. Carter
52 R. Holford

 Planning Systems, Inc.
 7900 Westpark Drive, Suite 507
 McLean, VA 22101
53 Attn: R. Cavanaugh

Distribution list for ARL-TR-83-25 under Contract N00014-78-C-0113
(cont'd)

Copy No.

- 54 TRW, Inc.
TRW Defense & Space Systems Group
Washington Operations
7600 Colshire Drive
McLean, VA 22101
Attn: R. T. Brown
- 55 Defence Scientific Establishment
HMNZ Dockyard
Devonport, Auckland
NEW ZEALAND
Attn: K. M. Guthrie
- 56 School of Mechanical Engineering
Georgia Institute of Technology
Atlanta, GA 30332
Attn: A. D. Pierce
- 57 Department of Geology and Geophysics
Geophysical and Polar Research Center
Lewis G. Weeks Hall for Geological Sciences
The University of Wisconsin, Madison
1215 W. Dayton Street
Madison, WI 53706
Attn: C. S. Clay
- 58 Courant Institute
251 Mercer Street
New York, NY 10012
Attn: D. C. Stickler
- 59 Bolt, Beranek, & Newman, Inc.
50 Moulton Street
Cambridge, MA 02138
Attn: H. Cox
- 60 Hawaii Institute of Geophysics
The University of Hawaii
2525 Correa Road
Honolulu, HI 96822
Attn: L. N. Frazer
- 61 Director
North Atlantic Treaty Organization
SACLANT ASW Research Centre
APO New York 09019
Attn: T. Akal

Distribution list for ARL-TR-83-25 under Contract N00014-78-C-0113
(cont'd)

Copy No.

62 Defence Research Establishment Pacific
FMO Victoria, BC
VOS 1B0 CANADA
Attn: R. Chapman

63 Defence Research Establishment Atlantic
9 Grove Street
P. O. Box 1012
Dartmouth, NS
CANADA
Attn: D. Chapman

64 Rosenteil School of Marine and
Atmospheric Science
The University of Miami
10 Rickenbacker Causeway
Miami, FL 33149
Attn: H. DeFarrari

65 Applied Physics Laboratory
The Johns Hopkins University
Johns Hopkins Road
Laurel, MD 20810
66 Attn: J. Lombardo
R. Henrick

67 The University of Miami
10 Rickenbacker Causeway
Miami, FL 33149
Attn: F. Tappert

68 Physics Department
The University of Rhode Island
Kingston, RI 02881
Attn: C. Kaufman

69 Department of Electrical Engineering
Polytechnic Institute of New York
Farmingdale, NY 11735
Attn: L. B. Felsen

70 I. Tolstoy
Knockvennie, Castle Douglas
S. W. SCOTLAND
GREAT BRITAIN

Distribution list for ARL-TR-83-25 under Contract N00014-78-C-0113
(cont'd)

Copy No.

71	Department of Geology The University of Texas at Austin Austin, TX 78712 Attn: C. Wilson
72	Physics Department The University of Auckland Private Bag, Auckland NEW ZEALAND Attn: A. C. Kibblewhite
73	C. T. Tindle
74	Brown University Providence, RI 02912 Attn: A. O. Williams, Jr.
75	The Lamont-Doherty Geological Observatory Columbia University Palisades, NY 10964 Attn: R. D. Stoll
76	Office of Naval Research Resident Representative Room No. 582, Federal Building Austin, TX 78701
77	Nancy R. Bedford, ARL:UT
78	Robert F. Gragg, ARL:UT
79	Loyd Hampton, ARL:UT
80	Kenneth E. Hawker, ARL:UT
81	Jo B. Lindberg, ARL:UT
82	Robert A. Koch, ARL:UT
83	David Knobles, ARL:UT
84	Stephen K. Mitchell, ARL:UT
85	David W. Oakley, ARL:UT
86	Clark S. Penrod, ARL:UT
87	Richard Pitre, ARL:UT

Distribution list for ARL-TR-83-25 under Contract N00014-78-C-0113
(cont'd)

Copy No.

88	Paul J. Vidmar, ARL:UT
89	Library, ARL:UT
90 - 100	Reserve, ARL:UT

END

FILMED

10-83

DTIC