

AD-A133 008

AN APPLICATION OF THE FINITE ELEMENT METHOD TO THE
SOLUTION OF LOW REYNOL..(U) AERONAUTICAL RESEARCH LABS
MELBOURNE (AUSTRALIA) T TRAN-CONG JUN 83

1/1

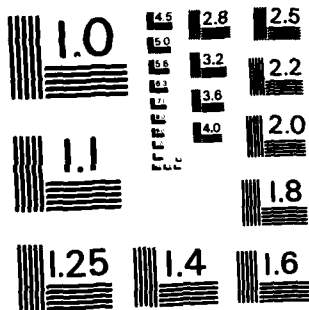
UNCLASSIFIED

ARL-AERO-TM-349

F/G 9/2

NL

END
DATE
FILMED
1984
11*



MICROCOPY RESOLUTION TEST CHART
NATIONAL BUREAU OF STANDARDS-1963-A

UNCLASSIFIED

12

ARL-AERO-TECH-MEMO-349

AR-002-953



DEPARTMENT OF DEFENCE
DEFENCE SCIENCE AND TECHNOLOGY ORGANISATION
AERONAUTICAL RESEARCH LABORATORIES
MELBOURNE, VICTORIA

Aerodynamics Technical Memorandum 349

AN APPLICATION OF THE FINITE ELEMENT METHOD TO THE
SOLUTION OF LOW REYNOLDS NUMBER, INCOMPRESSIBLE
FLOW AROUND A JOUKOWSKI AEROFOIL, WITH EMPHASIS
ON AUTOMATIC GENERATION OF GRIDS

T. TRAN-CONG

DTIC
ELECTE
SEP 29 1983
S B

Approved for Public Release

(C) COMMONWEALTH OF AUSTRALIA 1983

JUNE 1983

COPY No

UNCLASSIFIED 88 09 26 008

AD-A133 008

DTIC FILE COPY

AR-002-953

DEPARTMENT OF DEFENCE
DEFENCE SCIENCE AND TECHNOLOGY ORGANISATION
AERONAUTICAL RESEARCH LABORATORIES

Aerodynamics Technical Memorandum 349

AN APPLICATION OF THE FINITE ELEMENT METHOD TO THE
SOLUTION OF LOW REYNOLDS NUMBER, INCOMPRESSIBLE
FLOW AROUND A JOUKOWSKI AEROFOIL, WITH EMPHASIS
ON AUTOMATIC GENERATION OF GRIDS

by

T. TRAN-CONG

SUMMARY

Some FORTRAN programs have been written in order to apply the Finite Element Method to the solution for low Reynolds number, incompressible flows around a Joukowski aerofoil, with emphasis on the generation of grids. These programs serve as evaluation tools and as a first step in a planned longer-term study of the Finite Element Method as applied to fluid flow problems.



© COMMONWEALTH OF AUSTRALIA 1983

DTIC
ELECTE
S SEP 29 1983 D
B

POSTAL ADDRESS: Director, Aeronautical Research Laboratories,
P.O. Box 4331, Melbourne, Victoria, 3001, Australia.

CONTENTS

	<u>Page No.</u>
1. INTRODUCTION	1
2. THEORETICAL BACKGROUND	1
3. DESCRIPTION OF THE PROGRAMS	3
4. RESULTS	3
ACKNOWLEDGEMENT	
REFERENCES	
FIGURES	
PROGRAM LISTING	
DISTRIBUTION LIST	
DOCUMENT CONTROL DATA	

Accession For	
NTIS GRA&I	<input checked="" type="checkbox"/>
DTIC TAB	<input type="checkbox"/>
Unannounced	<input type="checkbox"/>
Justification	
By _____	
Distribution/	
Availability Codes	
Dist	Avail and/or Special
A	



1. INTRODUCTION

The problems of external flows around aircraft, internal flows inside propulsion units and also related problems like structural designs all require more and more accurate solutions while incorporating state of the art features involving more and more complex geometries and loadings. This is steadily becoming beyond the reach of analytical solution methods and thus necessitates the use of new computational methods. One of these is the Finite Element Method.

The Finite Element Method was initially developed and used by Zienkiewicz [1] for elasticity problems and is at the height of its development at the time of writing. The method is being studied theoretically as well as being applied to a broader and broader range of problems; its applications are found in solid mechanics, fluid mechanics, electromagnetics, etc. A reasonably short coverage of the method can be found in the book by Fenner [3].

The FORTRAN programs given at the end of this Memo have been written as an application of the Finite Element Method to a basic fluid flow problem, namely the incompressible, low Reynolds number flow about an aerofoil. A substantial part of these programs deals with the automatic generation and efficient plotting of the grids surrounding a Joukowski aerofoil.

The work reported here initiates an activity which, it is hoped, will eventually lead to a capability for aerodynamic estimation beyond that currently possible with analytical or empirical methods.

2. THEORETICAL BACKGROUND

The Finite Element Method is a method applicable to linear problems, initially developed for elasticity whereby nodal displacements in a continuum are solved for a given system of nodal forces provided these nodal forces are known for every individual mode of nodal displacement. In other words the method sets up a large system of equations, with displacements d_i 's as unknowns, forces f_j 's as the given constants on the right hand side of the equations, and the coefficients a_{ij} 's of the unknowns are written down from the knowledge of nodal forces resulting from each individual nodal displacement.

Our large system of equations thus takes the form:

$$\begin{array}{rcl}
 a_{11}d_1 + a_{12}d_2 + \dots & \dots + a_{1n}d_n & = f_1 \\
 a_{21}d_1 + a_{22}d_2 + \dots & \dots + a_{2n}d_n & = f_2 \\
 \cdot & \cdot & \cdot \\
 \cdot & \cdot & \cdot \\
 \cdot & \cdot & \cdot \\
 \cdot & \cdot & \cdot \\
 \cdot & \cdot & \cdot \\
 a_{n1}d_1 + a_{n2}d_2 + \dots & \dots + a_{nn}d_n & = f_n
 \end{array} \tag{1}$$

where a_{ij} are the forces generated by the unit displacement d_j while other displacements are kept to zero. A high speed computer is then used to solve this system of equations when the f_j 's are given. The above system is of the banded type due to the process of forming discrete elements to represent the continuum. For the individual displacement of each node the resulting non-zero nodal forces only exist at its immediate neighbour nodes, each of which must share at least one common element with the node considered. The problem of boundary conditions where displacements instead of forces are given on some boundary nodes is easily dealt with by replacing the force equations for these nodes with the simpler displacement equations which have the known values of displacements on the right hand sides and the nodal displacements on the left hand sides. A special method is then used to solve this banded system; considerable saving in computation is the direct result of the purposely designed banded character of the system.

This Finite Element Method is readily adapted to the problem of Stokes flow where the above displacements are replaced by fluid velocities at every occurrence (see [3], p. 16). The only remaining problem is the introduction of inertial forces as a kind of perturbation to the viscous forces, thus retaining the linear character of the problem.

The central problem in any Finite Element Method program is its efficiency and stability. The programs given at the end of this Memo are used in evaluating these two aspects for a certain number of different schemes available.

A substantial part of the programs given at the end of this Memo deal with the automatic generation of a grid of triangular elements around a Joukowski aerofoil. The grid is generated by wrapping an initial rectangular mesh consisting of triangular elements around a circular cylinder, this is followed by a conformal transformation to modify the cylinder into an aerofoil section. Provisions are made for varying the chord, camber, thickness of the aerofoil as well as its angle of attack. The nodal distribution can also be varied to put more nodes in the boundary layer than in the far field uniform flow.

In generating the mesh the numbering of the nodes affects the bandwidth of the system of equations to be solved. However this should not alter the computation speed of the subroutines for solving the equations. The grid with triangular elements can surround each of its nodes by the least number of six adjacent nodes, hence its use is advantageous in reducing the bandwidth of the system of equations.

The coordinate transformation process can sometimes invert a finite sized element, i.e. change its oriented boundary into the opposite direction. This can be avoided by reducing the size of the local elements and by checking the sign of the area of every element after each coordinate transformation.

3. DESCRIPTION OF THE PROGRAMS

Program FEM sets up the grid geometry through the subroutines MESH3, MODIFY3, MODIFY4, ELAREA and then follows the standard finite element method described in Section 2. The matrix $[a_{ij}]$ is set up by the subroutine STIFF with the boundary conditions catered for by subroutine BCS. The system of equations is then solved by subroutine ELIMIN. The solution velocities are then used to calculate the inertial forces in INERT and modify the nodal values of forces in the next iteration for a more accurate solution of velocities. Outputs are through subroutine MSHOUT, FEMOUT, OUTPUT and SOLPLT.

Some features of these programs are:

- Since the program FEM originated from an elasticity problem it is necessary to set the Poisson ratio ν to 0.49 to simulate an incompressible flow. If this value of ν is set to 0.5 exactly the system has a number of infinite coefficients unless the problem is reformulated with one third of the equations, which are redundant, removed. Here the approximate value $\nu = 0.49$ is used to avoid the complication (see [3], p. 154).
- Subroutines STIFF and ELIMIN are for fully populated matrices. They are used here only for quick production of early results and have been replaced in subsequent work by those more suitable for banded matrices which require much less computer memory and time.
- A seam line is generated at the trailing line of the aerofoil by the MESH, MODIFY3, MODIFY4 subroutines to put a number of nodes there.
- In plotting the grid, two nodes of any side of an element are joined if their ordinal number increases in the anticlockwise direction around the element. This process makes the plotting computation linearly proportional to the number of elements (hence nodes) and avoids plotting any line twice.
- Although the numbering of elements and nodes does not affect the speed of the solution routines it does affect the speed of plotting the grid.

4. RESULTS

Figure 1 is the basic rectangular grid consisting of triangular elements. The numbering scheme for the 17 elements and 105 nodes is self-evident. This whole grid is then wrapped around a circle, as in Figure 2, with a scaling effect to put more nodes near to the inside. The grid then undergoes a Joukowski transformation with circulation added to become the grid in Figure 3. The Finite Element Method is then applied to the flow field using this grid. The resulting velocity field for a Reynolds number of 1.2 (based on wing chord) is plotted in Figure 4.

The results so obtained are as expected and improvements on the method are under study.

ACKNOWLEDGEMENT

The programs here were enthusiastically written and tested by Mr Martin Heinz Mann who worked with the author in his Industrial Training period with the Aeronautical Research Laboratories. Mr R.A. Feik has made a number of helpful comments on the preparation of this Memo.

REFERENCES

- | | | |
|-----|------------------------------------|----------------------------------------------------------------------------------------|
| [1] | Zienkiewicz, O.C. and Cheung, Y.K. | The Finite Element Method in Structural and Continuum Mechanics.
McGraw-Hill, 1967. |
| [2] | Zienkiewicz, O.C. | The Finite Element Method in Engineering Science.
McGraw-Hill, 1971. |
| [3] | Fenner, R.T. | Finite Element Methods for Engineers.
The McMillan Press Ltd., 1975. |
| [4] | Shen, Shan-fu | Finite Element Methods in Fluid Mechanics.
Ann. Rev. Fluid Mech., 1977. |

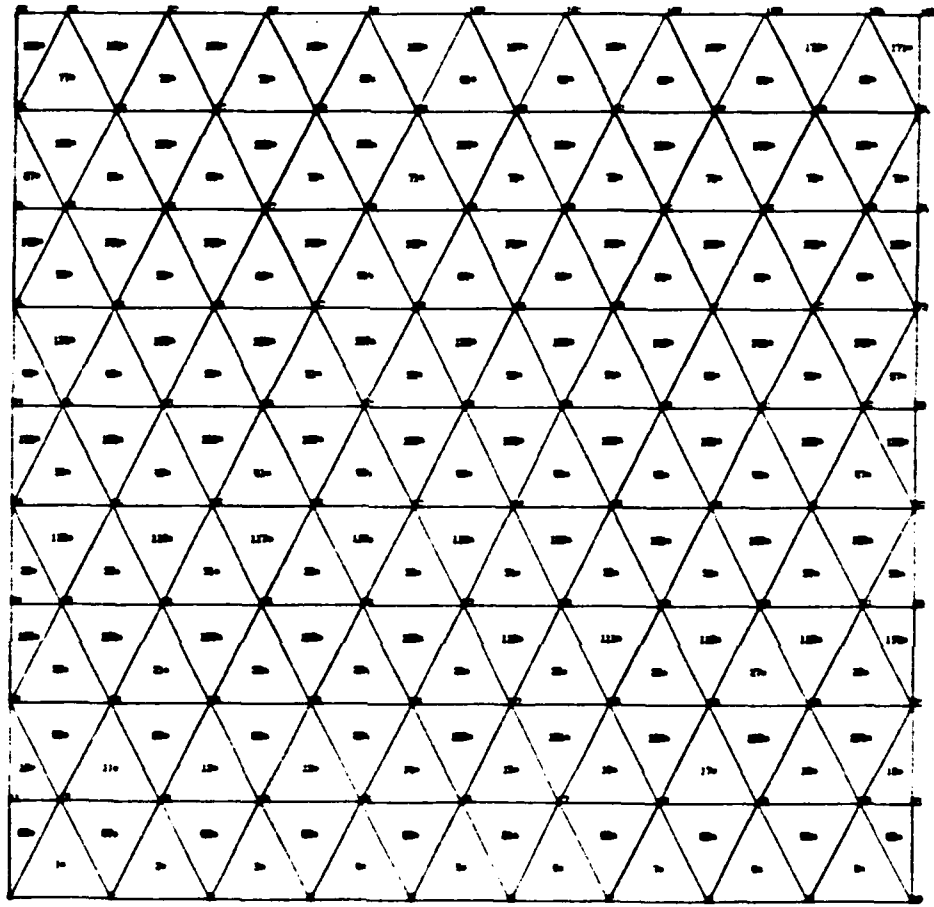


FIG.1 BASIC RECTANGULAR GRID WITH TRIANGULAR ELEMENTS

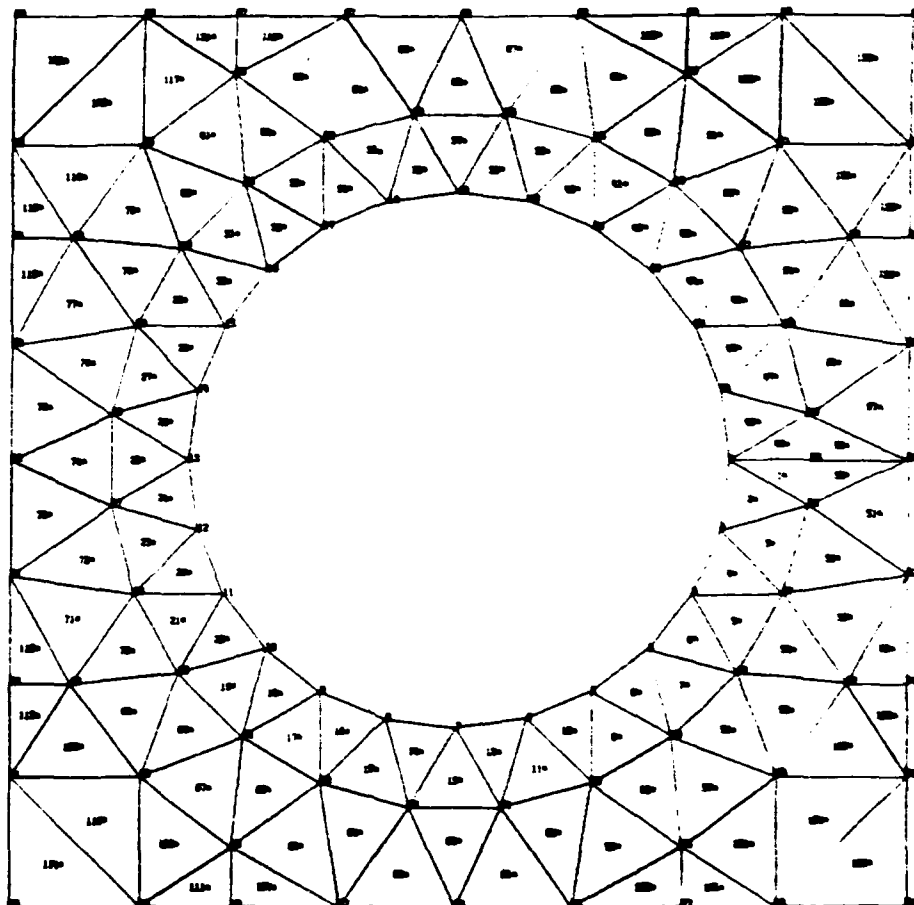


FIG.2 GRID AROUND A CYLINDER

1.1

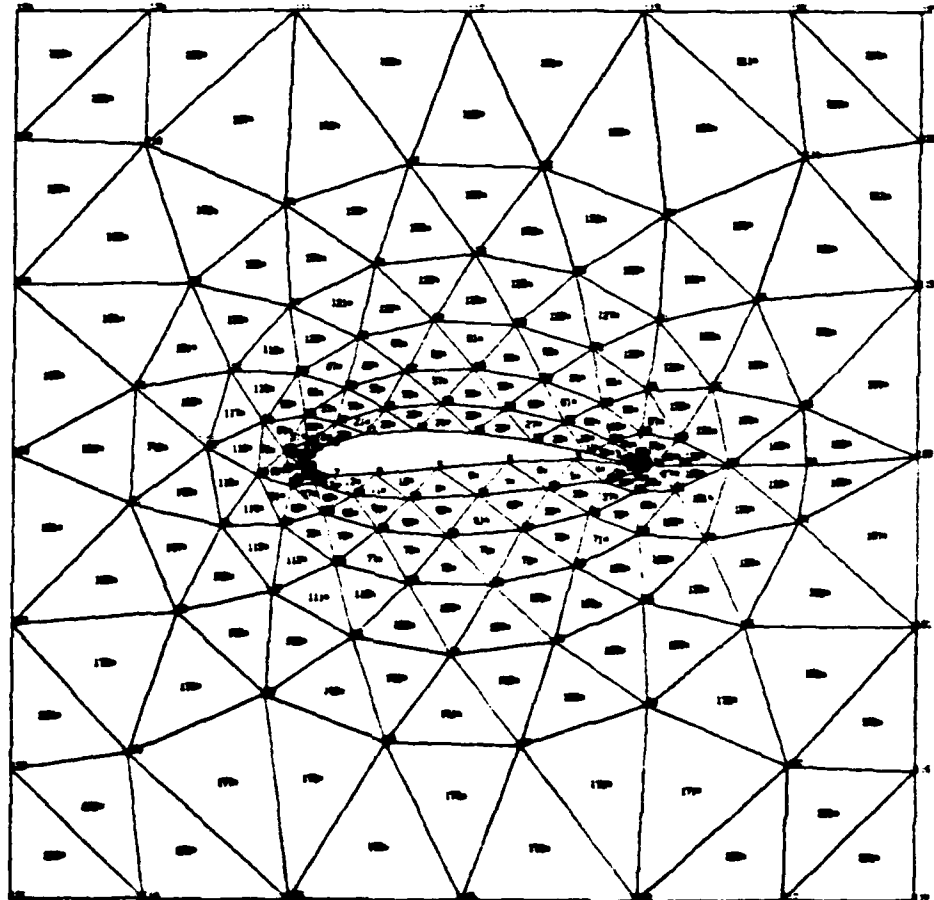


FIG.3 GRID AROUND A JOUKOWSKI AEROFOIL

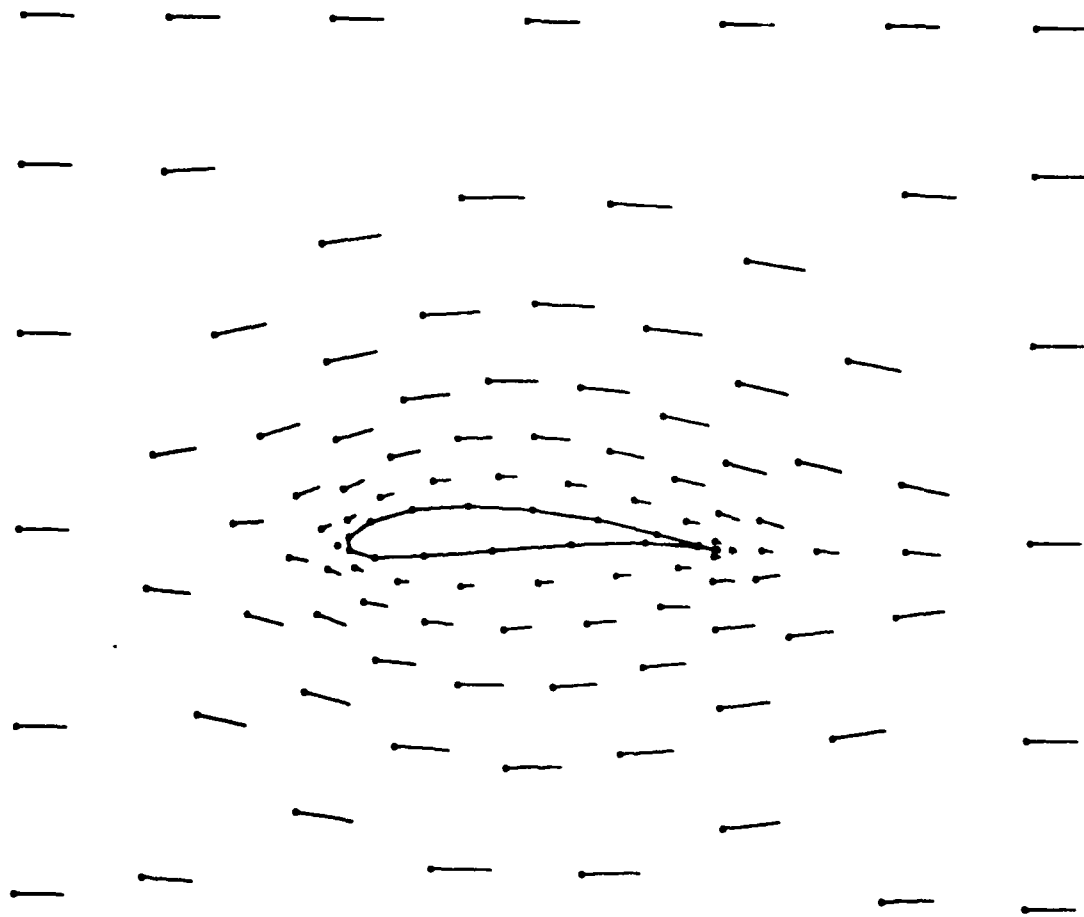


FIG.4 INCOMPRESSIBLE FLOW AT REYNOLDS NUMBER 1.2 AROUND A JOUKOWSKI AEROFIL

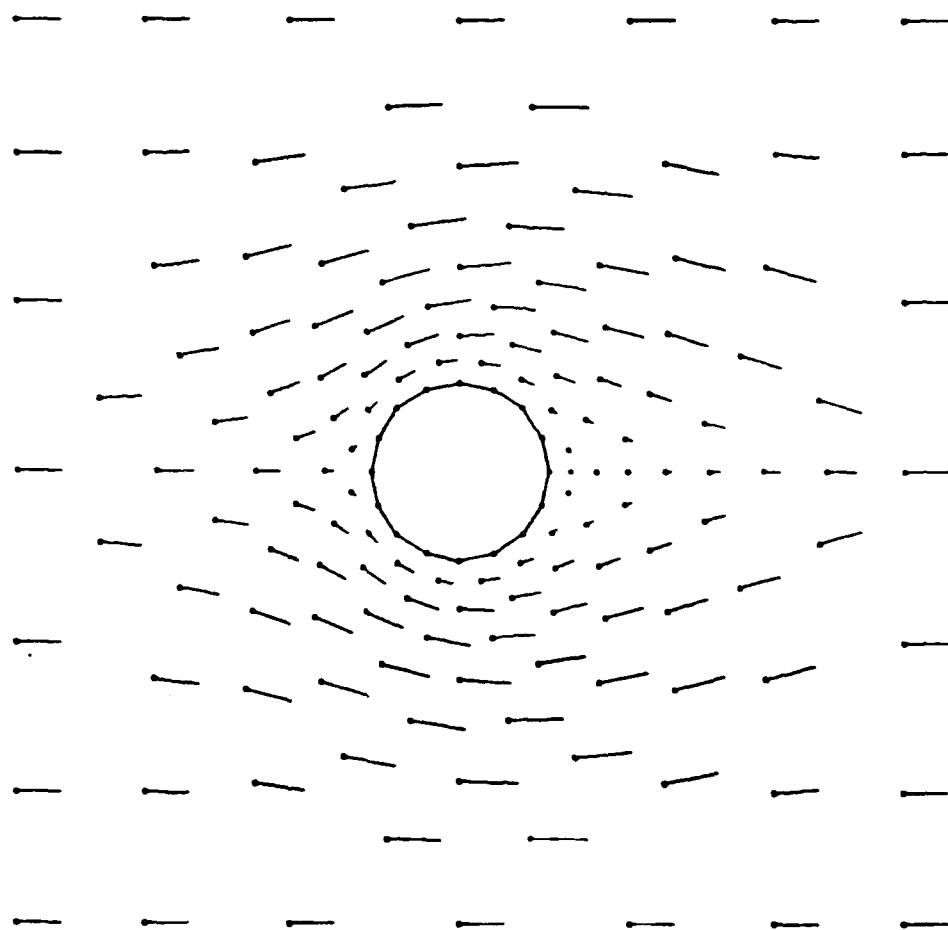


FIG.5 INCOMPRESSIBLE FLOW AROUND A CIRCULAR CYLINDER AT REYNOLDS NUMBER 6

PROGRAM LISTING

```

PROGRAM FEM

C PROGRAM FOR FINITE ELEMENT ANALYSIS OF TWO-DIMENSIONAL FLOW
C ABOUT A JOUKOWSKI AEROFOIL, USING CONSTANT STRAIN TRIANGULAR
C ELEMENTS.

DIMENSION XSDI(300)

REAL NU

COMMON /CMESH/ NEL,NNP,X(150),Y(150),AI(270),AJ(270),
. AK(270),BI(270),BJ(270),BK(270),AREA(270),NPI(270),
. NPJ(270),MPK(270),MOUT,QLTY(270)
. /CMPAR/ NXPT,NYPT,A,B
. /CSTIF/ SSTIFF(300,300),MFB1(50),MPB2(50),U(150),V(150),
. FX(150),FY(150),NBP1,NBP2
. /CMATL/ RO

DATA NROW,NCOL/300,300/

C GENERATE MESH DATA.
TYPE 10
10 FORMAT(' INPUT THE NUMBERS OF POINTS ALONG THE X AND Y AXES, ',/,
. ' RESPECTIVELY, ALSO THE MESH DATA OUTPUT CONTROL PARAMETER ',/,
. ' (0 IF NO MESH DATA TO BE PRINTED OUT, 1 IF ALL MESH DATA TO ',/,
. ' BE PRINTED OUT):(SI)')
CALL MESH3
CALL MODFY3
C CALL MODFY4

C COMPUTE THE ELEMENT GEOMETRIES.
CALL ELAREA

C OUTPUT THE MESH DATA.
CALL MSHOUT

C PLOT THE MESH.
CALL MPLOT2

C SET INITIAL VALUES OF STIFFNESSES, EXTERNAL FORCES, AND
C VELOCITIES.
DO 4 I=1,2*NNP
DO 4 J=1,2*NNP
4 SSTIFF(I,J)=0.
DO 5 I=1,NNP
FX(I)=0.
FY(I)=0.
U(I)=0.
5 V(I)=0.

C ASSEMBLE THE GLOBAL STIFFNESS MATRIX.
CALL STIFF
OPEN(UNIT=9,FILE='SSTIFF.TMP',MODE='BINARY')
WRITE (9) SSTIFF
CLOSE(UNIT=9)

C OUTPUT THE STIFFNESS MATRIX.
CALL STFOUT

C INPUT DENSITY, RO.
TYPE 66
66 FORMAT(' INPUT THE DENSITY, RO:(F)')
ACCEPT 67,RO
67 FORMAT('

```



```

OPEN(UNIT=3,FILE='FEMOUT.DAT')
WRITE(3,23)
23  FORMAT(' SOLUTION TO FEM PROGRAM')
CLOSE(UNIT=3)

C    SET UP ITERATIVE SOLUTION DO LOOP.
DO 71 L=1,3

C    CALCULATE INERTIAL FORCE PER ELEMENT, AND DISTRIBUTE AMONGST THE
C    ELEMENTAL NODES.
OPEN(UNIT=9,FILE='SSTIFF.TMP',MODE='BINARY')
READ (9) SSTIFF
CLOSE(UNIT=9)
CALL INERT

C    APPLY THE BOUNDARY CONDITIONS.
CALL BCS
DO 90 I=1,NBP1+NBP2
IF(I.LE.NBP1) N=NPB1(I)
IF(I.GT.NBP1) N=NPB2(I-NBP1)
FX(N)=U(N)
FY(N)=V(N)
DO 80 ICOL=1,2*NMP
SSTIFF(2*N-1,ICOL)=0.
80  SSTIFF(2*N,ICOL)=0.
SSTIFF(2*N-1,2*N-1)=1.
SSTIFF(2*N,2*N)=1.
90  CONTINUE
DO 21 I=1,NMP
SSTIFF(2*I-1,2*NMP+1)=FX(I)
21  SSTIFF(2*I,2*NMP+1)=FY(I)

C    SOLVE THE SYSTEM OF EQUATIONS.
MEQN=2*NMP
TYPE 25,MEQN
25  FORMAT(' ENTERING ELIMIN',MEQN=',I6)
CALL ELIMIN(SSTIFF,XSOL,MEQN,NROW,NCOL,DET,ANEAN)

C    OUTPUT THE SOLUTION.
DO 36 I=1,NMP
U(I)=XSOL(2*I-1)
36  V(I)=XSOL(2*I)
CALL FEMOUT
CALL OUTPUT

71  CONTINUE

OPEN(UNIT=9,FILE='SSTIFF.TMP')
CLOSE(UNIT=9,DISPOSE='DELETE')

C    PLOT THE VELOCITIES.
CALL SOLPLT
END
SUBROUTINE MESH3

C    SUBPROGRAM TO READ OR GENERATE A MESH OF TRIANGULAR FINITE
C    ELEMENTS. USED IN CONJUNCTION WITH NOMP3, THIS VERSION
C    GENERATES A CIRCULAR MESH OF MAINLY ISOSCELES TRIANGULAR
C    ELEMENTS. NODES ARE NUMBERED IN CONTINUOUS RINGS, AND ELEMENTS
C    ARE NUMBERED IN COMPLETE ROWS, I.E. UPRIGHT AND INVERTED
C    TRIANGULAR ELEMENTS CONSIDERED ALTERNATELY.

COMMON /CMESH/ NEL,NMP,X(150),Y(150),AI(270),AJ(270),
. AK(270),BI(270),BJ(270),BK(270),AREA(270),NPI(270),
. NPJ(270),MPK(270),MOUT,QLTY(270)
. /CMPAR/ NXPT,NYPT,A,B

```

```

C      INPUT THE NUMBERS OF POINTS ALONG THE X AND Y AXES, ALSO THE
C      MESH DATA OUTPUT CONTROL PARAMETER.
      ACCEPT 51, NXPT,NYPT,MOUT
51     FORMAT(3I)

C      COMPUTE AND TEST THE NUMBERS OF NODES AND ELEMENTS.
      MODNY=MOD(NYPT,2)
      IF(MODNY.EQ.0) NMP=NYPT*(2*NXPT-1)/2
      IF(MODNY.EQ.1) NMP=(NYPT-1)*(2*NXPT-1)/2+NXPT-1
      MEL=(NYPT-1)*(2*NXPT-1)
      IF(NMP.LE.150.AND.MEL.LE.270) GO TO 1
      TYPE 61, NMP,MEL
61     FORMAT(30H0EXCESSIVE SIZE OF MESH, NMP =,I5,8H, MEL =,I5)
      STOP

C      DEFINE THE NODAL POINT COORDINATES.
1      I=0
      DO 3 IY=1,NYPT
      MODIY=MOD(IY,2)
      DO 2 IX=1,NXPT-1
      I=I+1
      X(I)=FLOAT(IX-1)/FLOAT(NXPT-1)
      Y(I)=FLOAT(IY-1)/FLOAT(NYPT-1)
2      IF(MODIY.EQ.0.AND.IX.GT.1) X(I)=X(I)-0.5/FLOAT(NXPT-1)
      IF(MODIY.EQ.1) GO TO 3
      I=I+1
      Y(I)=Y(I-1)
      X(I)=1.-0.5/FLOAT(NXPT-1)
3      CONTINUE

C      DEFINE THE NUMBERS OF THE THREE NODES OF EACH ELEMENT.
      N=0
      NYEL=NYPT-1
      DO 4 IY=1,NYEL
      NXEL=NXPT-1
      IF(MOD(IY,2).EQ.0) NXEL=NXPT
      DO 4 IX=1,NXEL
      N=N+1

C      MNEW REPLACES N AS THE NUMBER OF THE ELEMENT
      MNEW=2*N
      NPI(MNEW)=N
      NPJ(MNEW)=NPI(MNEW)+1
      NPK(MNEW)=NPI(MNEW)+NXPT
      IF(IX.EQ.NXEL)NPJ(MNEW)=NPJ(MNEW)-NXEL
4      IF(IX.EQ.NXPT)NPK(MNEW)=NPK(MNEW)-NXPT+1
      M1=M
      DO 5 IY=1,NYEL
      NXEL=NXPT
      IF(MOD(IY,2).EQ.0) NXEL=NXPT-1
      DO 5 IX=1,NXEL

C      MNEW REPLACES N AS THE NUMBER OF THE ELEMENT
      N=N+1
      MNEW=(N-M1)*2-1
      NPI(MNEW)=(MNEW+1)/2
      NPJ(MNEW)=NPI(MNEW)+NXPT
      NPK(MNEW)=NPI(MNEW)+NXPT-1
      IF(IX.EQ.NXPT)NPI(MNEW)=NPI(MNEW)-NXEL+1
5      IF(IX.EQ.NXEL)NPJ(MNEW)=NPJ(MNEW)-NXEL

      RETURN
      END

      SUBROUTINE MODFY3

```

```

C      SUBPROGRAM TO MODIFY A MESH TO SUIT A PARTICULAR PROBLEM.
C      THIS VERSION ADAPTS A SQUARE MESH TO A CIRCULAR ARC (RING).

      COMMON /CMESH/ NEL,NMP,X(150),Y(150),AI(270),AJ(270),
      . AK(270),BI(270),BJ(270),BK(270),AREA(270),MPI(270),
      . NPJ(270),NPK(270),NOUT,OLTI(270)
      . /CMPAR/ NXPT,NYPT,A,B

C      INPUT THE SCALE FACTOR AND THE MESH DIMENSIONS.
      TYPE 41
41     FORMAT(' INPUT THE SCALE FACTOR AND THE MESH DIMENSIONS:(3F)')
      ACCEPT S1,S,A,B
51     FORMAT(3F)

C      TEST FOR ACCEPTABLE BASIC MESH.
      IF(MOD(NXPT,8).EQ.1.AND.MOD(NYPT,2).EQ.1) GO TO 1
      TYPE 61
61     FORMAT(' MESH UNSUITABLE FOR PRESENT MODIFICATION')
      STOP

C      PERFORM FIRST MODIFICATION OF X COORDINATES.
      I=0
      HR=ALOG(S)*(NYPT-1)
      DO 2 I=1,NMP
      C=Y(I)*ALOG(S)*(NYPT-1)
      IF(S.NE.1.0)C=(EXP(C)-1.0)/(EXP(HR)-1.0)
      IF(S.EQ.1.0)C=Y(I)
      Y(I)=C
2     CONTINUE

C      PERFORM SECOND MODIFICATION TO INTRODUCE CURVATURE.
      PI=4.*ATAN(1.)
      DO 3 I=1,NMP
      R=(A+(B-A)*Y(I))/2.
      PHI=X(I)*2.0*PI
      X(I)=R*COS(PHI)+0.5*B
      Y(I)=-R*SIN(PHI)+0.5*B
3     CONTINUE

C      MODIFY COORDINATES OF POINTS NEXT TO THE END POINTS OF THE
C      OUTERMOST CIRCUMFERENTIAL ROW.
      I2=NMP-NXPT+3-(NXPT-1)/4
      I1=NMP-NXPT+1
      DO 11 K=1,4
      ARG=PI/4.-FLOAT(K)*PI/2.
      RK1=SQRT(2.)*COS(ARG)
      RK2=SQRT(2.)*SIN(ARG)
      I1=I1+(NXPT-1)/4
      I2=I2+(NXPT-1)/4
      ITEMP=I1
      I1=I2
      I2=ITEMP
      X(I1)=B/2.*(1.+RK1)
      Y(I2)=B/2.*(1.+RK2)
11     CONTINUE
      IF(NXPT.EQ.9)GO TO 22

      I1=NMP-NXPT+3-(NXPT-1)/4
      I2=NMP-NXPT+1
      DO 22 K=1,4
      ARG=PI/4.-FLOAT(K)*PI/2.
      RK1=SQRT(2.)*COS(ARG)
      RK2=SQRT(2.)*SIN(ARG)
      I1=I1+(NXPT-1)/4
      I2=I2+(NXPT-1)/4

```

```

C      DEFINE AND TEST NEW TOTAL NUMBERS OF NODES AND ELEMENTS.
      I=NNP
      NNP=NNP+(NXPT-1)/4+1-2
      M=NEL
      NEL=NEL+2*((NXPT-1)/4+1)-6
      IF(NNP.LE.150.AND.NEL.LE.270) GO TO 4
      TYPE 62,NNP,NEL
62     FORMAT(' EXCESSIVE SIZE OF MESH, NNP =',I5,' NEL =',I5)
      STOP

C      DEFINE THE COORDINATES OF THE ADDITIONAL NODES.
4      IXMAX=(NXPT-1)/4+1-3
      DO 6 IX=1,IXMAX
      I=I+1
      II=I+IX
      IF(IX.GT.((NXPT-1)/4+1-3)/2) GO TO 5
      X(I)=X(II)
      IF(MOD(K,2).EQ.1) X(I)=B/2.*(1.+RK1)
      Y(I)=Y(II)
      IF(MOD(K,2).EQ.0) Y(I)=B/2.*(1.+RK1)
      GO TO 6
5      X(I)=X(II-1)
      IF(MOD(K,2).EQ.0) X(I)=B/2.*(1+RK2)
      Y(I)=Y(II-1)
      IF(MOD(K,2).EQ.1) Y(I)=B/2.*(1+RK2)
6      CONTINUE
      Y(NNP)=B/2.+B/2.*RK2
      X(NNP)=B/2.+B/2.*RK1

C      DEFINE THE NODES OF THE ADDITIONAL ELEMENTS.
      M1=M
      DO 7 IX=1,IXMAX
      M=M+1
      NPI(M)=I1+M-M1-1
      NPJ(M)=NPI(M)+1
7      NPK(M)=NNP-((NXPT-1)/4+1-2)+M-M1
      M2=M
      IXMAX=IXMAX-1
      DO 8 IX=1,IXMAX
      M=M+1
      NPI(M)=I1+M-M2
      NPJ(M)=NNP-((NXPT-1)/4+1-2)+M-M2+1
8      NPK(M)=NPJ(M)-1
      NPI(NEL)=NNP-((NXPT-1)/4)/2
      NPJ(NEL)=NPI(NEL)+1
      NPK(NEL)=NNP
22     CONTINUE

C      CORRECT COORDINATES OF NODES ON MESH PERIMETER FOR SMALL
C      DISCREPANCIES.
      DO 36 I=1,NNP
      DIFFX=X(I)-B
      DIFFY=Y(I)-B
      IF(ABS(X(I)).LT.1.E-4)X(I)=0.
      IF(ABS(Y(I)).LT.1.E-4)Y(I)=0.
      IF(ABS(DIFFX).LT.1.E-4)X(I)=B
36     IF(ABS(DIFFY).LT.1.E-4)Y(I)=B

      RETURN
      END

SUBROUTINE MODFY4

C      SUBPROGRAM TO TRANSFORM A CIRCULAR ARC TO A JOUKOWSKI AEROFOIL.

```

```

COMMON /CMESH/ NEL,NNP,X(150),Y(150),AI(270),AJ(270),
. AK(270),BI(270),BJ(270),BK(270),AREA(270),NPI(270),
. NPJ(270),NPK(270),NDUT,DLTY(270)
. /CNPAR/ NXPT,NYPT,A,B

C INPUT THE TWO ECCENTRICITIES.
TYPE 41
41 FORMAT(' INPUT THE TWO ECCENTRICITIES:(2F)')
ACCEPT 51,X1,Y1
51 FORMAT(2F)
X1=X1+A
Y1=Y1+A

C INTRODUCE TRANSLATION OF AXES.
DO 1 I=1,NNP

C BYPASS TRANSFORMATION OF OUTER PERIMETER NODES.
IF((X(I).EQ.0.).OR.(X(I).EQ.B).OR.(Y(I).EQ.0.).OR.(Y(I).EQ.B))
. GO TO 1

C INCORPORATE CIRCULATION CORRECTION TO SATISFY KUTTA TRAILING
C EDGE CONDITION.
XL=X(I)
YL=Y(I)
PHI1=ASIN(Y1+2./A)
R=SQRT((XL-0.5*B)*(XL-0.5*B)+
. (YL-0.5*B)*(YL-0.5*B))
PHI=ACOS((XL-0.5*B)/R)
IF((YL-0.5*B).LT.0.)PHI=-PHI
PHI=PHI1+PHI+A/(A*2.)
XL=R*COS(PHI)+B/2.
YL=R*SIN(PHI)+B/2.
A1=SQRT((.5*A)**2-Y1*Y1)-X1
XI=(XL-.5*B-X1)/A1
ETA=(YL-.5*B-Y1)/A1

C INTRODUCE JOUKOWSKI TRANSFORMATION.
XISTA=XI*(1.+1./(XI*XI+ETA*ETA))
ETASTA=ETA*(1.-1./(XI*XI+ETA*ETA))

C REVERSE INITIAL TRANSLATION OF AXES.
IF((X(I).NE.0.).AND.(X(I).NE.B))
. X(I)=A1*XISTA+.5*B+X1
IF((Y(I).NE.0.).AND.(Y(I).NE.B))
. Y(I)=A1*ETASTA+.5*B+Y1
1 CONTINUE

RETURN
END

SUBROUTINE ELAREA

C SUBPROGRAM TO CALCULATE THE ELEMENT AREAS AND QUALITIES.

COMMON /CMESH/ NEL,NNP,X(150),Y(150),AI(270),AJ(270),
. AK(270),BI(270),BJ(270),BK(270),AREA(270),NPI(270),
. NPJ(270),NPK(270),NDUT,DLTY(270)
. /CNPAR/ NXPT,NYPT,A,B

C CALCULATE THE ELEMENT AREAS AND QUALITIES.
DO 30 N=1,NEL
I=NPI(N)
J=NPJ(N)
K=NPK(N)
X1=X(J)-X(I)
X2=X(K)-X(I)

```

```

Y1=Y(J)-Y(I)
Y2=Y(K)-Y(I)
X3=X(K)-X(J)
Y3=Y(K)-Y(J)
SL1=SQRT(X1*X1+Y1*Y1)
SL2=SQRT(X2*X2+Y2*Y2)
SL3=SQRT(X3*X3+Y3*Y3)
AREA(N)=(X1*Y2-X2*Y1)/2.
QLTY(N)=AREA(N)/(SL1+SL2+SL3)**2.*12.*SQRT(3.)
IF(AREA(N).GT.0.) GO TO 30
TYPE 32,N
32  FORMAT(' ELEMENT ',I5,' HAS NEGATIVE AREA')
STOP
30  CONTINUE

RETURN
END

SUBROUTINE MSHOUT

C  SUBPROGRAM TO WRITE OUT THE GEOMETRIC DATA FOR THE MESH.

COMMON /CMESH/ NEL,NNP,X(150),Y(150),AI(270),AJ(270),
. AK(270),BI(270),BJ(270),BK(270),AREA(270),NPI(270),
. NPJ(270),NPK(270),NOUT,QLTY(270)
. /CNPAR/ NXPT,NYPT,A,B

IF(NOUT.EQ.0) RETURN

C  OUTPUT THE NUMBER OF ELEMENTS, NODAL POINTS AND COORDINATES.
TYPE 61, NEL,NNP,(I,X(I),Y(I),I=1,NNP)
61  FORMAT(' GEOMETRIC DATA FOR THE MESH',//,
.10X,'NUMBER OF ELEMENTS =',I4,//,
.10X,'NUMBER OF NODAL POINTS =',I4,//,
. ' NODAL POINT COORDINATES',//,
. ' I',6X,'X',6X,'Y',/
. (1X,I5,2F9.4))

C  OUTPUT THE ELEMENT NODE NUMBERS AND AREAS.
TYPE 62, (N,NPI(N),NPJ(N),NPK(N),AREA(N),QLTY(N),N=1,NEL)
62  FORMAT('//, ' ELEMENT NODE NUMBERS,AREAS AND QUALITIES',//,
. ' N',4X,'I',4X,'J',4X,'K',6X,'AREA',7X,'QUALITY',/,
. (1X,I15,1X,E12.4,4X,F6.3))

RETURN
END

SUBROUTINE MPLOTT

C  SUBPROGRAM TO PLOT THE MESH.

COMMON /CMESH/ NEL,NNP,X(150),Y(150),AI(270),AJ(270),
. AK(270),BI(270),BJ(270),BK(270),AREA(270),NPI(270),
. NPJ(270),NPK(270),NOUT,QLTY(270)
. /CNPAR/ NXPT,NYPT,A,B

DIMENSION NPNT(4),XN(4),YN(4)
OPEN(UNIT=1,FILE='MSHPLT.OUT')

C  REPOSITION PEN.
CALL PLOT(1.0.,5.,2)
SCALE=10.

DO 61 N=1,NEL
NPNT(1)=NPI(N)

```

```

NPNT(2)=NPJ(M)
NPNT(3)=NPK(M)
NPNT(4)=NPI(M)
DO 71 K=1,3
I1=NPNT(K)
I2=NPNT(K+1)
XN(1)=X(I1)
XN(2)=X(I2)
XN(3)=0.
XN(4)=1./SCALE
YN(1)=Y(I1)
YN(2)=Y(I2)
YN(3)=0.
YN(4)=1./SCALE

C CHECK WHETHER PAIR OF POINTS ARE TO BE JOINED.
IFLAG=0
IF(I1.LT.I2) IFLAG=1

C CHECK WHETHER PAIR OF POINTS LIES ON MESH OUTER PERIMETER.
IF(((XN(1).EQ.0.).AND.(XN(2).EQ.0.)).OR.
. ((XN(1).EQ.B).AND.(XN(2).EQ.B)).OR.
. ((YN(1).EQ.0.).AND.(YN(2).EQ.0.)).OR.
. ((YN(1).EQ.B).AND.(YN(2).EQ.B))) IFLAG=1

C CHECK WHETHER PAIR OF POINTS LIES ON MESH INNER PERIMETER.
IF((I1.LE.NXPT-1).AND.(I2.LE.NXPT-1)) IFLAG=1

C JOIN APPROPRIATE POINTS.
IF(IFLAG.EQ.1) CALL LINE(1,XN,YN,2,1,0,46)
71 CONTINUE

C DETERMINE ELEMENT CENTROID COORDINATES.
I=NPI(M)
J=NPJ(M)
K=NPK(M)
AXELC=((X(I)+X(J)+X(K))/3.)*SCALE
AYELC=((Y(I)+Y(J)+Y(K))/3.)*SCALE

C DETERMINE NUMBER OF DIGITS IN M.
NDN=INT(ALOG10(FLOAT(M)))+1

C ADJUST ELEMENT NUMBER COORDINATES.
AXELC=XELC-.5*FLOAT(NDN+1)*.06
AYELC=YELC-.5*.07

C NUMBER ELEMENT.
CALL NUMBER(1,AXELC,AYELC,.07,FLOAT(M),0.,-1)
XSTAR=AXELC+FLOAT(NDN+1)*.06-.03
C XSTAR=XELC+FLOAT(NDN)*.06-.03
CALL SYNDOL(1,XSTAR,YELC,.07,42,0.,-1)
61 CONTINUE

C NUMBER NODES.
DO 51 I=1,MNP
TX=X(I)*SCALE
TY=Y(I)*SCALE
CALL NUMBER(1,TX,TY,.07,FLOAT(I),0.,-1)
51 CONTINUE
CLOSE(UNIT=1,FILE='MSNPLT.OUT')
RETURN
END

SUBROUTINE STIFF

C SUBPROGRAM TO FORM INDIVIDUAL ELEMENT STIFFNESS MATRICES, AND

```

```

C      ASSEMBLE THE OVERALL STRUCTURE STIFFNESS MATRIX.

      REAL NU

      DIMENSION IJK(3),DMAT(3,6),D(3,3),ESTIFF(6,6)

      COMMON /CMESH/ MEL,NMP,X(150),Y(150),AI(270),AJ(270),
      . AK(270),BI(270),BJ(270),BK(270),AREA(270),MPI(270),
      . MPJ(270),MPK(270),MOUT,OLTY(270)
      . /CHPAR/ NXPT,MYPT,A,B
      . /CSTIF/ SSTIFF(300,300),MPB1(50),MPB2(50),U(150),V(150),
      . FX(150),FY(150),NBP1,NBP2

C      INPUT THE MATERIAL PROPERTIES OF THE ELEMENTS.
      TYPE 27
27     FORMAT(' INPUT THE VALUE OF E AND NU:(2F)')
      ACCEPT 37,E,NU
37     FORMAT(2F)

      DO 50 I=1,2*NMF
      DO 50 J=1,2*NMP
50     SSTIFF(I,J)=0.
C      SET UP OVERALL ASSEMBLY LOOP.
      DO 20 n=1,MEL

C      COMPUTE THE ELEMENT GEOMETRIES.
      I=MPI(n)
      J=MPJ(n)
      K=MPK(n)
      AI(n)=-X(J)+X(K)
      AJ(n)=-X(K)+X(I)
      AK(n)=-X(I)+X(J)
      BI(n)=Y(J)-Y(K)
      BJ(n)=Y(K)-Y(I)
      BK(n)=Y(I)-Y(J)

C      STORE THE ELEMENT NODE NUMBERS IN ORDER IN ARRAY IJK.
      IJK(1)=MPI(n)
      IJK(2)=MPJ(n)
      IJK(3)=MPK(n)

C      FORM THE ELEMENT DIMENSION MATRIX, DMAT.
      DO 7 IRE=1,2
      DO 7 ICE=1,6
7     DMAT(IRE,ICE)=0.
      DMAT(1,1)=BI(n)
      DMAT(1,3)=BJ(n)
      DMAT(1,5)=BK(n)
      DMAT(2,2)=AI(n)
      DMAT(2,4)=AJ(n)
      DMAT(2,6)=AK(n)
      DO 8 ICE=1,6
      IF(MOD(ICE,2).EQ.0) DMAT(3,ICE)=DMAT(1,ICE-1)
8     IF(MOD(ICE,2).EQ.1) DMAT(3,ICE)=DMAT(2,ICE+1)

C      FORM THE ELASTIC PROPERTY MATRIX, D.
      DO 9 IRE=1,3
      DO 9 ICE=1,3
9     D(IRE,ICE)=0.
      FACT=E/((1.+NU)*(1.-2.*NU))
      D(1,1)=FACT*(1.-NU)
      D(1,2)=FACT*NU
      D(2,1)=D(1,2)
      D(2,2)=D(1,1)
      D(3,3)=FACT*.5*(1.-2.*NU)

```



```

C      FORM THE ELEMENT STIFFNESS MATRIX, ESTIFF.
      DO 10 I=1,6
      DO 10 J=1,6
      ESTIFF(I,J)=0.
      DO 10 L=1,3
      DO 10 K=1,3
10     ESTIFF(I,J)=ESTIFF(I,J)+BNAT(L,I)*D(L,K)*BNAT(K,J)*.25/AREA(M)

C      CONSTRUCT OVERALL STRUCTURE STIFFNESS MATRIX, SSTIFF.
      DO 20 IRE=1,3
      DO 20 ICE=1,3
      IROW=IJK(IRE)
      ICOL=IJK(ICE)
      SSTIFF(2*IROW-1,2*ICOL-1)=SSTIFF(2*IROW-1,2*ICOL-1)
      +ESTIFF(2*IRE-1,2*ICE-1)
      SSTIFF(2*IROW-1,2*ICOL)=SSTIFF(2*IROW-1,2*ICOL)
      +ESTIFF(2*IRE-1,2*ICE)
      SSTIFF(2*IROW,2*ICOL-1)=SSTIFF(2*IROW,2*ICOL-1)
      +ESTIFF(2*IRE,2*ICE-1)
      SSTIFF(2*IROW,2*ICOL)=SSTIFF(2*IROW,2*ICOL)
      +ESTIFF(2*IRE,2*ICE)
20     CONTINUE
      TYPE 5000
5000    FORMAT(' STIFF EXECUTED')
      RETURN
      END

      SUBROUTINE STFOU1

C      SUBPROGRAM TO OUTPUT STRUCTURE STIFFNESS MATRIX.

      COMMON /CMESH/ NEL,NNP,X(150),Y(150),AI(270),AJ(270),
      AK(270),BI(270),BJ(270),BK(270),AREA(270),NPI(270),
      NPJ(270),NPK(270),MOUT,QLTY(270)
      /CNPAR/ NAXT,NYPT,A,B
      /CSIFF/ SSTIFF(300,300),NPB1(50),NPB2(50),U(150),V(150),
      FX(150),FY(150),NBP1,NBP2

      TYPE 61
61     FORMAT(' INPUT THE GLOBAL STIFFNESS MATRIX OUTPUT CONTROL',/,
      ' PARAMETER (1 IF THE ENTIRE STIFFNESS MATRIX TO BE TYPED',/,
      ' OUT, 0 IF NONE OF THE STIFFNESS MATRIX TO BE TYPED OUT)::(I)')
      ACCEPT 71,KOUT
71     FORMAT(I)
      IF(KOUT.EQ.0) RETURN

      TYPE 50
50     FORMAT(//,' GLOBAL STIFFNESS MATRIX')
      DO 1 I=1,2*NNP
      TYPE 15,I
15     FORMAT(/, ' ROW ',I4)
      TYPE 10,(SSTIFF(I,J),J=1,2*NNP)
10     FORMAT(6F12.7)
      CONTINUE
      RETURN
      END

      SUBROUTINE INERT

C      SUBPROGRAM TO CALCULATE THE INERTIAL FORCE PER ELEMENT, AND
C      DISTRIBUTE IT AMONGST THE ELEMENTAL NDBES.

      COMMON /CMESH/ NEL,NNP,X(150),Y(150),AI(270),AJ(270),
      AK(270),BI(270),BJ(270),BK(270),AREA(270),NPI(270),
      NPJ(270),NPK(270),MOUT,QLTY(270)
      /CSIFF/ SSTIFF(300,300),NPB1(50),NPB2(50),U(150),V(150),

```

```

. FX(150),FY(150),NBP1,NBP2
. /CNATL/ RO

DIMENSION NPNT(4)

DO 56 I=1,NMF
56  FA(I)=0.
    FY(I)=0.

DO 41 N=1,NEL
NPNT(1)=NPI(N)
NPNT(2)=NPJ(N)
NPNT(3)=NPK(N)
NPNT(4)=NPI(N)
FEX=0.
FEY=0.
DO 31 K=1,3
I1=NPNT(K)
I2=NPNT(K+1)
D1=U(I1)
D2=U(I2)-U(I1)
D3=V(I1)
D4=V(I2)-V(I1)
RL1=X(I2)-X(I1)
RL2=Y(I2)-Y(I1)
RL=SQRT(RL1*RL1+RL2*RL2)
RNX=RL2/RL
RNY=-RL1/RL
FEX=FEX+RO*RL*(D1*((D1+D2)*RNX+(D3+.5*D4)*RNY)+D2*(D2+RNX/3.
. +(.5*D3+D4/3.)*RNY))
FEY=FEY+RO*RL*(D3*((D1+.5*D2)*RNX+(D3+D4)*RNY)+D4*((.5*D1+D2/3.)
. *RNX+D4*RNY/3.))
81  CONTINUE
DO 31 K=1,3
I1=NPNT(K)
FX(I1)=FX(I1)-FEX/3.
31  FY(I1)=FY(I1)-FEY/3.
41  CONTINUE

RETURN
END

SUBROUTINE BCS
C SUBPROGRAM TO APPLY THE BOUNDARY CONDITIONS.

COMMON /CNESH/ MEL,NMF,X(150),Y(150),AI(270),AJ(270),
. AK(270),BI(270),BJ(270),BK(270),AREA(270),NPI(270),
. NPJ(270),NPK(270),NDUT,DLT(270)
. /CNPAR/ NXPT,NYPI,A,B
. /CSTIF/ SSTIFF(300,300),NBP1(50),NBP2(50),U(150),V(150),
. FX(150),FY(150),NBP1,NBP2

C STORE NUMBERS OF NODES ON INNER MESH BOUNDARY IN ARRAY NBP1, AND
C SET CORRESPONDING VELOCITIES TO ZERO.
I=0
DO 10 N=1,NXPT-1
I=I+1
NBP1(I)=N
V(N)=0.
10  U(N)=0.
    NBP1=I

C STORE NUMBERS OF NODES ON OUTER MESH BOUNDARY IN ARRAY NBP2, AND
C SET CORRESPONDING VELOCITIES TO UNITY.
I=0

```

```

DO 20 N=1,NMF
IF((X(N).NE.0.).AND.(X(N).NE.B).AND.(Y(N).NE.0.).AND.(Y(N).NE.B)
) GO TO 20
I=I+1
NBP2(I)=N
U(N)=1.
V(N)=0.
20 CONTINUE
NBP2=I

RETURN
END

SUBROUTINE ELIMIN(A,X,NEQN,NROW,NCOL,DET,AMEAN)

C SUBPROGRAM FOR SOLVING SIMULTANEOUS LINEAR EQUATIONS BY GAUSSIAN
C ELIMINATION WITH PARTIAL PIVOTING.

DIMENSION A(NROW,NCOL),X(NROW)
DOUBLE PRECISION SUM

NEQN=NEQN
IF(NEQN.LE.NROW.AND.NEQN.LE.NCOL-1) GO TO 1
WRITE(6,61)
61 FORMAT(33H0STOP - DIMENSION ERROR IN ELIMIN)
STOP

C FIND MEAN COEFFICIENT MAGNITUDE.
1 AMEAN=0.
DO 2 I=1,NEQN
DO 2 J=1,NEQN
2 AMEAN=AMEAN+ABS(A(I,J))
AMEAN=AMEAN/FLGAT(NEQN*NEQN)

C COMMENCE ELIMINATION PROCESS.
JMAX=NEQN+1
NEQNM1=NEQN-1
DO 6 IEQN=1,NEQNM1

C SEARCH LEADING COLUMN OF THE COEFFICIENT MATRIX FROM THE
C DIAGONAL DOWNWARDS FOR THE LARGEST ELEMENT AND MAKE THIS THE
C PIVOTAL ELEMENT.
IMIN=IEQN+1
IMAX=IEQN
DO 3 I=IMIN,NEQN
3 IF(ABS(A(I,IEQN)).GT.ABS(A(IMAX,IEQN))) IMAX=I
IF(IMAX.EQ.IEQN) GO TO 5
DO 4 J=IEQN,JMAX
4 AA=A(IEQN,J)
A(IEQN,J)=A(IMAX,J)
A(IMAX,J)=AA

C ELIMINATE X(IEQN) FROM EQUATIONS (IEQN+1) TO NEQN, FIRST TESTING
C FOR NONZERO PIVOTAL ELEMENT.
5 IF(ABS(A(IEQN,IEQN)/AMEAN).LT.1.E-8) GO TO 10
DO 6 I=IMIN,NEQN
FACT=A(I,IEQN)/A(IEQN,IEQN)
DO 6 J=IMIN,JMAX
6 A(I,J)=A(I,J)-FACT*A(IEQN,J)

C SOLVE THE UPPER-TRIANGULAR SET OF EQUATIONS BY BACK
C SUBSTITUTION.
IF(ABS(A(NEQN,NEQN)/AMEAN).LT.1.E-8) GO TO 10
X(NEQN)=A(NEQN,JMAX)/A(NEQN,NEQN)
DO 8 L=2,NEQN
I=NEQN+1-L

```

```

      SUM=A(I,JMAX)
      IF I=1+1
      DO 7 J=1P1,NEQN
7      SUM=SUM-A(I,J)*X(J)
8      X(I)=SUM/A(I,I)

C      EVALUATE DETERMINANT OF COEFFICIENT MATRIX AND COMPARE WITH
C      ORIGINAL COEFFICIENTS.
      BETA=1.
      DO 9 I=1,NEQN
9      BETA=BETA*A(I,I)
      DET=BETA

      TYPE 72
72      FORMAT(' ELIMIN EXECUTED')

      RETURN
10      DET=0.
      TYPE 66
66      FORMAT(' ELIMIN NOT EXECUTED')
      RETURN
      END

SUBROUTINE FEMOUT

C      SUBPROGRAM TO STORE THE SOLUTION DATA IN OUTPUT DATA FILE.

      COMMON /CMESH/ NEL,NMP,X(150),Y(150),AI(270),AJ(270),
      . AK(270),BI(270),BJ(270),BK(270),AREA(270),NPI(270),
      . NPJ(270),NPK(270),MOUT,QLTY(270)
      . /CHPAR/ NXPT,NYPT
      . /CSTIF/ SSTIFF(300,300),NPB1(50),NPB2(50),U(150),V(150),
      . FX(150),FY(150),NBP1,NBP2

      OPEN(UNIT=3,FILE='FEMOUT.DAT',ACCESS='APPEND')
      WRITE(3,11),(I,FX(I),FY(I),U(I),V(I),I=1,NMP)
11      FORMAT(//,' NODAL FORCES AND VELOCITIES',//,
      . ' N',6X,'FX',10X,'FY',11X,'U',11X,'V',/,
      . (X,15,4E12.4))

      CLOSE(UNIT=3,FILE='FEMOUT.DAT')
      RETURN
      END

SUBROUTINE OUTPUT

C      SUBPROGRAM TO OUTPUT THE SOLUTION DATA.

      COMMON /CMESH/ NEL,NMP,X(150),Y(150),AI(270),AJ(270),
      . AK(270),BI(270),BJ(270),BK(270),AREA(270),NPI(270),
      . NPJ(270),NPK(270),MOUT,QLTY(270)
      . /CHPAR/ NXPT,NYPT
      . /CSTIF/ SSTIFF(300,300),NPB1(50),NPB2(50),U(150),V(150),
      . FX(150),FY(150),NBP1,NBP2

      TYPE 11,(I,FX(I),FY(I),U(I),V(I),I=1,NMP)
11      FORMAT(//,' NODAL FORCES AND VELOCITIES',//,
      . ' N',6X,'FX',10X,'FY',11X,'U',11X,'V',/,
      . (X,15,4E12.4))

      RETURN
      END

SUBROUTINE SOLPLT

```

```

C      SUBPROGRAM TO PLOT THE NODAL VELOCITIES.

      COMMON /CMESH/ NEL,NNP,X(150),Y(150),AI(270),AJ(270),
      . AK(270),BI(270),BJ(270),BK(270),AREA(270),NPI(270),
      . NPJ(270),NPK(270),NOUT,QLT(270)
      . /CMPAR/ NXPT,NYPT,A,B
      . /CSTIF/ SSTIFF(300,300),NPB1(50),NPB2(50),U(150),V(150),
      . FX(150),FY(150),NBP1,NBP2

      DIMENSION XVECT(4),YVECT(4),XN(4),YN(4)
      OPEN(UNIT=2,FILE='SOLPLT.OUT')

C      REPOSITION PEN.
      CALL PLOT(2,0.,5.,2)
      SCALE=10.

      DO 1 I=1,NNP

C      COMPUTE VELOCITY VECTOR COORDINATES.
      XVECT(1)=X(I)
      XVECT(2)=X(I)+U(I)/20.
      XVECT(3)=0.
      XVECT(4)=1./SCALE
      YVECT(1)=Y(I)
      YVECT(2)=Y(I)+V(I)/20.
      YVECT(3)=0.
      YVECT(4)=1./SCALE

C      PLOT VECTORS.
      CALL LINE(2,XVECT,YVECT,2,1,0,46)
      XNODE=XVECT(1)*SCALE
      YNODE=YVECT(1)*SCALE
      CALL SYMBOL(2,XNODE,YNODE,.07,4,0.,-1)
1      CONTINUE

C      PLOT AEROFOIL.
      DO 51 I=1,NXPT-2
      XN(1)=X(I)
      XN(2)=X(I+1)
      XN(3)=0.
      XN(4)=1./SCALE
      YN(1)=Y(I)
      YN(2)=Y(I+1)
      YN(3)=0.
      YN(4)=1./SCALE
      CALL LINE(2,XN,YN,2,1,0,46)
51     CONTINUE
      XN(1)=X(NXPT-1)
      XN(2)=X(1)
      YN(1)=Y(NXPT-1)
      YN(2)=Y(1)
      CALL LINE(2,XN,YN,2,1,0,46)
      CLOSE(UNIT=2,FILE='SOLPLT.OUT')

      RETURN
      END

```

DISTRIBUTION

AUSTRALIA

Department of Defence

Central Office

Chief Defence Scientist)
Deputy Chief Defence Scientist) (1 copy)
Superintendent, Science and Technology Programmes)
Controller, Projects and Analytical Studies)
Defence Science Representative (UK) (Doc Data sheet only)
Counsellor, Defence Science (USA) (Doc Data sheet only)
Defence Central Library
Document Exchange Centre, D.I.S.B. (17 copies)
Joint Intelligence Organisation
Librarian H Block, Victoria Barracks, Melbourne
Director General - Army Development (NSO) (4 copies)

Aeronautical Research Laboratories

Director
Library
Superintendent - Aerodynamics Division
Divisional File - Aerodynamics
Author: T. Tran-Cong

Materials Research Laboratories

Director/Library

Defence Research Centre

Library

Navy Office

Navy Scientific Adviser

Army Office

Army Scientific Adviser

Air Force Office

Air Force Scientific Adviser

Central Studies Establishment

Information Centre

.../contd.

DISTRIBUTION (CONTD.)

Department of Defence Support

Government Aircraft Factories

Manager
Library

Universities and Colleges

Sydney

Dr G.P. Steven, Dept. of Aeronautical Engineering

SPARES (10 copies)

TOTAL (50 copies)

Department of Defence
DOCUMENT CONTROL DATA

1. a. AR No AR-002-953	1. b. Establishment No ARL-AERO-TECH-MEMO-349	2. Document Date June 1983	3. Task No DST 82/031
4. Title AN APPLICATION OF THE FINITE ELEMENT METHOD TO THE SOLUTION OF LOW REYNOLDS NUMBER, INCOMPRESSIBLE FLOW AROUND A JOUKOWSKI AEROFOIL, WITH EMPHASIS ON AUTOMATIC GENERATION OF GRIDS.		5. Security a. document UNCLASSIFIED	
		6. No Pages 4	
8. Author(s) T. TRAN-CONG		7. No Refs 4	
		9. Downgrading Instructions -	
10. Corporate Author and Address Aeronautical Research Laboratories P.O. Box 4331, Melbourne, Victoria. 3001.		11. Authority (as appropriate) a. Source b. Status c. Downgrading d. Approval -	
12. Secondary Distribution (of this document) Approved for public release.			
Overseas enquirers outside stated limitations should be referred through ASDIS, Defence Information Services Branch, Department of Defence, Campbell Park, CANBERRA ACT 2601			
13. a. This document may be ANNOUNCED in catalogues and awareness services available to ... No limitations.			
13. b. Caution for other purposes (ie casual announcements) may be issued unrestricted release for use			
14. Descriptors Viscous flow. Joukowski airfoil. Incompressible flow. Computation. Finite element analysis.		15. COSATI Group 0101 1201 0902	
16. Abstract Some FORTRAN programs have been written in order to apply the Finite Element Method to the solution for Low Reynolds number, incompressible flows around a Joukowski aerofoil, with emphasis on the generation of grids. These programs serve as evaluation tools and as a first step in a planned longer-term study of the Finite Element Method as applied to fluid flow problems.			

This page is to be used to record information which is required by the Establishment for its own use but which will not be added to the DISTIS data base unless specifically requested.

16. Abstract (Cover)		
17. Imprint Aeronautical Research Laboratories, Melbourne, Australia.		
18. Document Series and Number AERODYNAMICS TECHNICAL MEMORANDUM 349	19. Cost Code 527770	20. Type of Report and Period Covered -
21. Computer Programs Used FEM (FORTRAN)		
22. Establishment File Ref(s) -		

END

DATE
FILMED

10 83

DI