

AD-A128 599

SIMULTANEOUS DETERMINATION OF MOLAR ABSORPTION
COEFFICIENTS AND EQUILIBRI. (U) ARMY ARMAMENT RESEARCH
AND DEVELOPMENT COMMAND ABERDEEN PROVI..

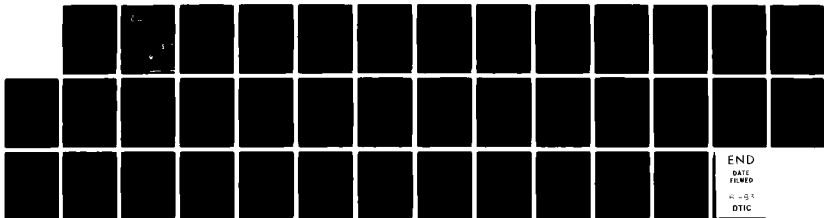
1/1

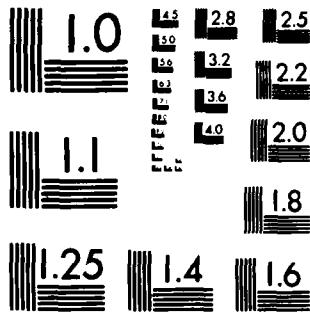
UNCLASSIFIED

J R WARD ET AL. APR 83 ARCSL-TR-82088

F/G 11/9

NL





MICROCOPY RESOLUTION TEST CHART
NATIONAL BUREAU OF STANDARDS-1963-A

12

AD



**CHEMICAL
SYSTEMS
LABORATORY**

US Army Armament Research and Development Command
Aberdeen Proving Ground, Maryland 21010

**TECHNICAL REPORT
ARCSL-TR-82088**

AD A 128599

**SIMULTANEOUS DETERMINATION OF
MOLAR ABSORPTION COEFFICIENTS AND EQUILIBRIUM
CONSTANTS FOR MONOMER-DIMER EQUILIBRIA**

By

J. Richard Ward

Reginald P. Seiders

Chemical Branch
Research Division

April 1983

**DTIC
ELECTE**
MAY 25 1983
S A D

DTIC FILE COPY



Approved for public release; distribution unlimited.

83 05 24 02

Disclaimer

The findings in this report are not to be construed as an official Department of the Army position unless so designated by other authorizing documents.

Disposition

Destroy this report when it is no longer needed. Do not return it to the originator.

UNCLASSIFIED

SECURITY CLASSIFICATION OF THIS PAGE (When Data Entered)

REPORT DOCUMENTATION PAGE		READ INSTRUCTIONS BEFORE COMPLETING FORM
1. REPORT NUMBER ARCLS-TR-82088	2. GOVT ACCESSION NO. AD-A128594	3. RECIPIENT'S CATALOG NUMBER
4. TITLE (and Subtitle) SIMULTANEOUS DETERMINATION OF MOLAR ABSORPTION COEFFICIENTS AND EQUILIBRIUM FOR MONOMER-DIMER EQUILIBRIA	5. TYPE OF REPORT & PERIOD COVERED Technical Report Sept. 81 to August 12	
	6. PERFORMING ORG. REPORT NUMBER	
7. AUTHOR(s) J. Richard Ward* Reginald P. Seiders	8. CONTRACT OR GRANT NUMBER(s)	
9. PERFORMING ORGANIZATION NAME AND ADDRESS Commander, Chemical Systems Laboratory ATTN: DRDAR-CLB-CA Aberdeen Proving Ground, Maryland 21010	10. PROGRAM ELEMENT, PROJECT, TASK AREA & WORK UNIT NUMBERS 1L161101A71A	
11. CONTROLLING OFFICE NAME AND ADDRESS Commander, Chemical Systems Laboratory ATTN: DRDAR-CLJ-R Aberdeen Proving Ground, Maryland 21010	12. REPORT DATE April 1983	
	13. NUMBER OF PAGES 38	
14. MONITORING AGENCY NAME & ADDRESS (if different from Controlling Office)	15. SECURITY CLASS. (of this report) UNCLASSIFIED	
	15a. DECLASSIFICATION/DOWNGRADING SCHEDULE NA	
16. DISTRIBUTION STATEMENT (of this Report) Approved for public release; distribution unlimited.		
17. DISTRIBUTION STATEMENT (of the abstract entered in Block 20, if different from Report)		
18. SUPPLEMENTARY NOTES *Ballistic Research Laboratory, Aberdeen Proving Ground, Maryland 21010		
19. KEY WORDS (Continue on reverse side if necessary and identify by block number) Cobalt (II) complexes Phthalocyanine Monomer-dimer equilibria Kinetics		
20. ABSTRACT (Continue on reverse side if necessary and identify by block number) The majority of methods for measuring dimerization constants requires that the pure monomer spectrum be known. This spectrum is obtained by successive dilution of a dye solution until Beer's law is obeyed. In practice, there is a limit where the absorbance of the solution is too small to measure precisely. Frequently, the dye is diluted with alcoholic-aqueous solutions to foster monomer formation. We have devised a general scheme to compute molar absorption coefficients and dimerization constants based on Monahan's method. Absorbances are (Continued of reverse side)		

DD FORM 1473 1 JAN 73 EDITION OF 1 NOV 65 IS OBSOLETE

UNCLASSIFIED

SECURITY CLASSIFICATION OF THIS PAGE (When Data Entered)

UNCLASSIFIED

SECURITY CLASSIFICATION OF THIS PAGE(When Data Entered)

20. ABSTRACT (continued)

measured for a series of dye concentrations. A nonlinear least-squares program then finds the best-fit monomer and dimer molar absorption coefficients. Absorbances are remeasured at various temperatures or with different dye concentrations and the calculation repeated. The mean molar absorption coefficients are computed from all the measurements; these values are then used to compute the dimerization constants at each temperature.

This technique was applied with cobalt (II) tetrasulfonated phthalocyanine as the dyestuff. At 662 nm the molar absorption coefficients for monomer and dimer were $9.6 \pm 0.6 \times 10^4 \text{ M}^{-1} \text{ cm}^{-1}$ and $7.5 \pm 0.8 \times 10^4 \text{ M}^{-1} \text{ cm}^{-1}$, respectively. The error is the sample standard deviation of four dye solutions for measurements made at 5° over the range 15° to 45°C . This monomer value compares favorably with a value of $1.0 \times 10^5 \text{ M}^{-1} \text{ cm}^{-1}$ measured in a $2 \times 10^{-7} \text{ M}$ aqueous-ethanol solution for which Beer's law was obeyed.

PREFACE

The work described in this report was authorized under Project 1L161101A71A, Research in Defense Systems, Scientific Area B, Chemical Defense Research. This work was performed at CSL as part of a joint research program between BRL and CSL. The work covered in this report was performed during FY 82.

The use of trade names in this report does not constitute an official endorsement or approval of the use of such commercial hardware or software. This report may not be cited for purposes of advertisement.

Reproduction of this document in whole or in part is prohibited except with permission of the Commander, Chemical Systems Laboratory, ATTN: DRDAR-CLJ-R, Aberdeen Proving Ground, Maryland 21010. However, the Defense Technical Information Center and the National Technical Information Service are authorized to reproduce the document for United States Government purposes.

Acknowledgment

The authors wish to acknowledge the inspiration and assistance of Dr. George T. Davis.



A

CONTENTS

	<u>Page</u>
1. INTRODUCTION	7
2. MATERIALS AND METHODS	8
2.1 Preparation of [29H, 31H - Phthalocyanine - 2,9,16,23 - Tetrasulfonato (2-)-N ²⁹ , N ³⁰ , N ³¹ , N ³²] Cobalt (CoTSPC)	8
2.2 Spectrophotometric Measurements	8
2.3 Determination of Molar Absorbance Coefficients	8
3. RESULTS AND DISCUSSION	9
3.1 CoTSPC Spectrum in Water	9
3.2 Monomer Spectrum by Dilution in Ethanol-Water	11
3.3 Simultaneous Determination of Monomer-Dimer Molar Absorption Coefficients	12
4. CONCLUSIONS.	18
LITERATURE CITED	21
APPENDICES	
A. Absorbance Measurements at 662nm to Determine ϵ_M and ϵ_D	23
B. Dimerization Constants Determined with Fixed Molar Absorbance Coefficients.	27
C. Dimerization Constants for Solutions Which Were Not Used to Determine Molar Absorbance Coefficients	31
DISTRIBUTION LIST.	35

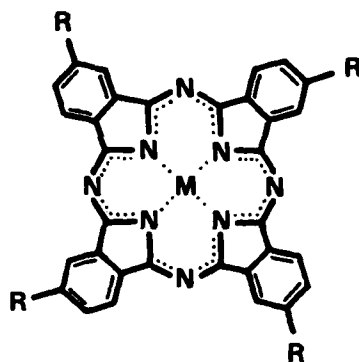
LIST OF TABLES

Table		Page
1	Maximum Absorbances for CoTSPC Diluted with 20 Percent by Volume Ethanol-Water	11
2	Molar Absorption Coefficients of Monomeric CoTSPC in 20 Percent by Volume Ethanol-Water	12
3	Summary of ϵ_M and ϵ_D Computed From Least-Squares Treatment of Absorbances vs. CoTSPC Concentration of 662nm . . .	13
4	Summary of Dimerization Constants Determined with ϵ_M and ϵ_D Fixed	14
5	Summary of Dimerization Constants with Solutions Which Were Not Used for Determining ϵ_M and ϵ_D	14
6	Comparison of Mean Dimerization Constants	15
7	Comparison Between Experimental Dimerization Constant and Those Calculated with Best-Fit Activation Parameters	17
8	Results of Calculations to Determine ΔH° with Equation (9) . . .	18
9	Thermodynamic Parameters for CoTSPC Dimerization in Water . . .	18

SIMULTANEOUS DETERMINATION OF MOLAR ABSORPTION COEFFICIENTS AND EQUILIBRIUM CONSTANTS FOR MONOMER-DIMER EQUILIBRIA

1. INTRODUCTION

Metal complexes of tetrasulfonated phthalocyanine (TSPC, figure 1), like other water-soluble dyestuffs, aggregate in aqueous solution.¹ The formation of the dimer has been the subject of repeated studies for a variety of transition-metal complexes with TSPC.²⁻⁸



R = SO₃Na (TSPC)

M = Co⁺⁺; Cu⁺⁺

Figure 1. Structure of Metal Phthalocyanines

The equilibrium constant for formation of a dimer is conveniently obtained spectrophotometrically since TSPC complexes absorb strongly in the visible region. All of the methods employed in the past to determine the dimerization constant of TSPC complexes spectrophotometrically required that the spectrum of the pure monomer be known. This spectrum is obtained by successive dilution of a dye solution until Beer's Law behavior is obeyed. In practice, there is a limit where the absorbance of the solution is too small to measure precisely. Frequently, the dye is diluted in alcoholic-aqueous solution to foster monomer formation. In addition, further approximations on the nature of the dimer spectrum are made,⁹ or the absorbance is measured with large amounts of monomer in solution to facilitate mathematical approximations.⁴ In the latter case, Reynolds and Kolstad³ contend that as much as 80% uncertainty can be introduced in the value of the dimerization constant.

This report describes results for a more general scheme that we devised based on a method introduced by Monahan in 1970¹⁰ in which a nonlinear least-squares program computes best-fit molar absorbance coefficients for both monomer and dimer simultaneously from absorbance measurements over a range of dye concentrations. The method is illustrated with cobalt (II) tetrasulfonated phthalocyanine (CoTSPC) as the dyestuff.

2. MATERIAL AND METHODS

2.1 Preparation of [29H,31H-phthalocyanine-2,9,16,23-tetrasulfonato(2-)- N²⁹,N³⁰,N³¹,N³²] Cobalt (CoTSPC).

This material was prepared by the method of Weber and Busch¹¹ using the sodium salt of 4-sulfophthalic acid, ammonium chloride, urea, ammonium molybdate, and cobalt sulfate heptahydrate in hot nitrobenzene. The purification procedure for this 0.05-mol scale reaction differed slightly from the published method. The crude, dark-blue product was broken apart with a spatula, rinsed with 400 ml methanol, and was finely ground in a mortar. The resulting blue powder was dissolved in 1.1 l of 1N HCl saturated with sodium chloride to give a deep blue slurry that was heated to reflux briefly, then was cooled to room temperature and filtered. The air-dried product was dissolved in 700 ml of 0.1N sodium hydroxide, heated to 80°C and filtered (no residue). Sodium chloride (270 gm) was added to salt out the product. This slurry was heated with stirring at 80°C for 3 hours while ammonia evolved. Upon cooling to room temperature, the product was isolated by filtration. This reprecipitation was repeated twice and the final precipitate was washed with 1.8 l of 80% aqueous ethanol to remove occluded NaCl. A convenient final purification was achieved by washing the blue powder in the thimble of a Soxhlet apparatus with hot 95% ethanol for 18 hours. The product was then dried *in vacuo* for 2 days to give 22.0 gm (54%) of the desired CoTSPC as determined by UV-VIS spectroscopy.

2.2 Spectrophotometric Measurements.

All spectrophotometric measurements are made with a Beckman Model 25 UV-VIS Spectrophotometer using a cell with a 1-cm path length. The CoTSPC solutions were equilibrated for at least 30 minutes in a water bath that was also connected to the cell compartment of the instrument. The solution was transferred to the spectrophotometer cell and allowed another 3 to 5 minutes to equilibrate. The temperature of the solution was recorded with the thermocouple in the cell compartment that is integral to the spectrophotometer. This thermocouple was calibrated against an NBS thermometer. The water bath kept the cell compartment temperature within $\pm 0.1^\circ\text{C}$.

2.3 Determination of Molar Absorption Coefficients.

The absorbance of a solution in a 1-cm cell containing only monomer and dimer is

$$A = \epsilon_M [M] + \epsilon_D [D] \quad (1)$$

where

A = absorbance

ϵ_M = molar absorption coefficient, monomer, $\text{M}^{-1}\text{cm}^{-1}$

ϵ_D = molar absorption coefficient, dimer, $\text{M}^{-1}\text{cm}^{-1}$

[M] = monomer concentration, M

[D] = dimer concentration, M.

The equilibrium between monomer and dimer is

$$K = \frac{[D]}{[M]^2} \quad (2)$$

where K = dimerization constant, M^{-1} .

The total concentration of CoTSPC ($[Co]$) is

$$[Co] = [M] + 2 [D] \quad (3)$$

Equations 2 and 3 can be combined to give the monomer concentration in terms of total CoTSPC as

$$[M] = \frac{-1 + \sqrt{1 + 8K [Co]}}{4K} \quad (4)$$

With equations (2) and (4), one can rewrite equation (1) in terms of the experimentally accessible total concentration of CoTSPC as

$$A = \epsilon_M \left(\frac{-1 + \sqrt{1 + 8K [Co]}}{4K} \right) + \frac{\epsilon_D}{2} \left[[Co] - \left(\frac{-1 + \sqrt{1 + 8K [Co]}}{4K} \right) \right] \quad (5)$$

A series of solutions with different CoTSPC concentrations was made from aliquots of four stock solutions of CoTSPC. The absorbances of these solutions were measured at a given wavelength after temperature equilibration. A nonlinear least-squares program¹² based on the Gauss-Newton technique was used to fit the measured absorbances versus CoTSPC concentrations to equation 5. The program found best-fit values of ϵ_M , ϵ_D , and K and also recalculated the absorbances with these best-fit values. The absorbance measurements were then made at different temperatures. Mean values of the best-fit ϵ_M and ϵ_D were determined from all the experiments. These values were fixed and equation 5 was used to find best-fit values of K for each stock solution and temperature.

The monomer's molar absorption coefficient was also measured by diluting CoTSPC in 20% (by volume) ethanol-water solutions until Beer's Law behavior was observed. Equation 5 will approach

$$A = \epsilon_M [Co] \quad (6)$$

where $8K[Co] \ll 1$, since $(1 + 2x)^{\frac{1}{2}} \approx (1 + x)$, when $2x \ll 1$.

3. RESULTS AND DISCUSSION

3.1 CoTSPC Spectrum in Water.

Figure 2 illustrates spectra of a $1.17 \times 10^{-5} M$ solution of CoTSPC between 600 and 700 nm that was heated to 70°C and allowed to cool to room temperature. The shoulder near 620 nm grew and the peak near 660 nm decreased as more dimer formed at the lower temperature. The presence of the isosbestic point at 634 nm

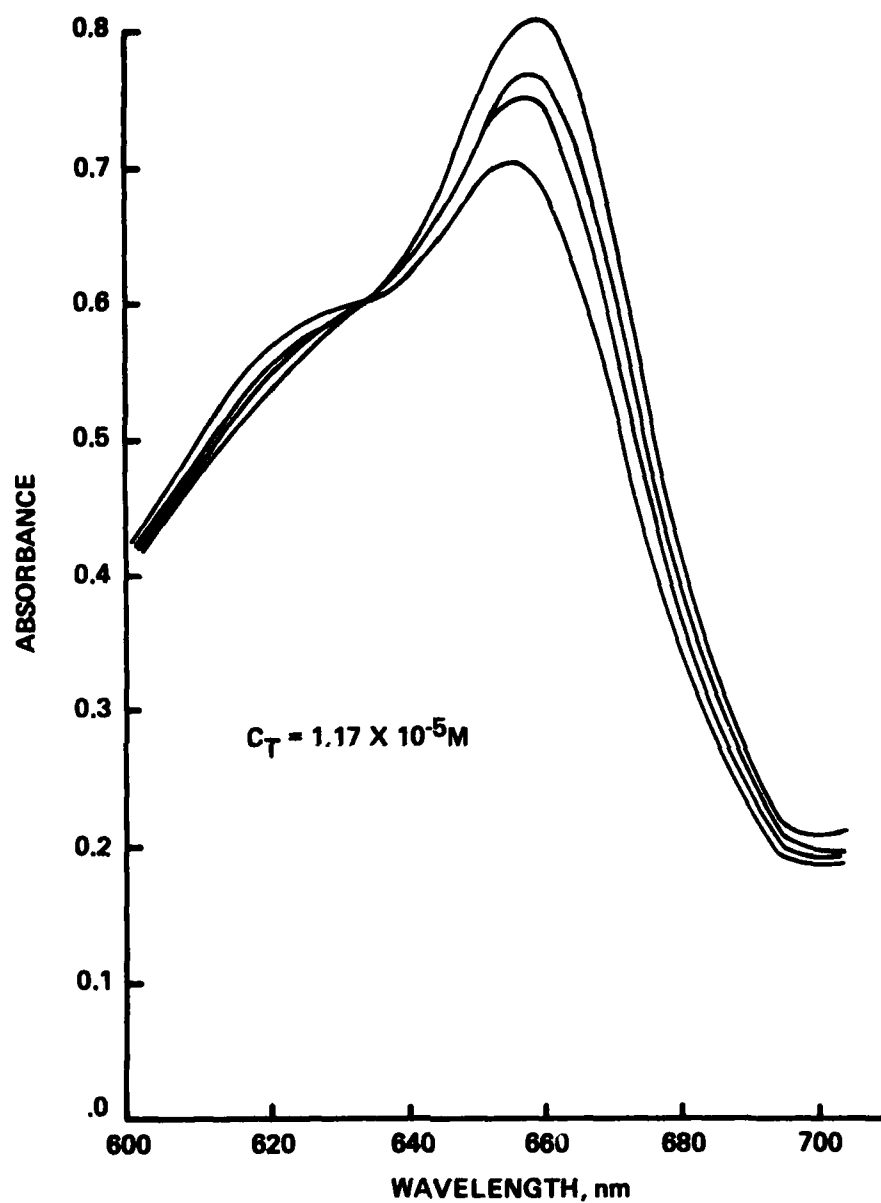


Figure 2. Decrease in Absorbance at 662 nm of CoTSPC and Formation of Isosbestic Point at 634 nm on Cooling to Room Temperature from 70°C

was taken as evidence that only monomer and dimer existed at this concentration. To avoid interference from higher aggregates, subsequent stock solutions were made no more concentrated than $1.2 \times 10^{-5}M$.

3.2 Monomer Spectrum by Dilution in Ethanol-Water.

In order to estimate a molar absorption coefficient for the pure monomer, 1-ml aliquots of a stock solution were diluted to volume with a 20% by volume ethanol-water solution in a series of volumetric flasks. The shoulder near 620 nm disappeared and one nearly symmetrical peak centered at 662 nm remained as the solutions were diluted. Table 1 lists the absorbances recorded at the peak heights along with the corresponding molar absorption coefficients. Since it was necessary to use the 0.1 absorbance full-scale setting, the absorbances for the 25-, 50-, and 100-ml dilutions were remeasured to test the reproducibility of the instrument. These results are also listed in table 1.

Table 1. Maximum Absorbances for CoTSPC Diluted with 20% by Volume Ethanol-Water*

Dilution	[CoTSPC] M ($\times 10^7$)	A	ϵ $M^{-1}cm^{-1}$ ($\times 10^{-5}$)	A**	ϵ $M^{-1}cm^{-1}$ ($\times 10^{-5}$)
1:10	11.5	0.112	0.98	—	—
1:25	4.60	0.0472	1.03	0.0479	1.05
1:50	2.30	0.0242	1.06	0.0243	1.06
1:100	1.15	0.0113	0.99	0.0117	1.02
1:250	0.46	0.0041	0.92	—	—

* 1 cm cell; $\lambda = 662$ nm

** Measured absorbance for second trial with same solution.

One can see that the molar absorption coefficient is constant for a $2 \times 10^{-7}M$ solution within the precision of the experiment. Table 2 lists results for a series of solutions prepared from 1-ml aliquots of stock solutions diluted with the ethanolic-water solution into a 50-ml volumetric flask. The mean molar absorption coefficient at 662 nm is $1.05 \pm 0.02 \times 10^5 M^{-1}cm^{-1}$, the error expressed as the sample standard deviation for the eight solutions. Other reported values are $1.03 \times 10^5 M^{-1}cm^{-1}$ at $\lambda = 663$ nm,¹³ determined by heating a water solution until the absorbance was constant, and $1.2 \times 10^5 M^{-1}cm^{-1}$ at $\lambda = 663$ nm,¹⁴ determined by dilution in ethanol-water solution.

Table 2. Molar Absorption Coefficients of Monomeric CoTSPC in 20% by Volume Ethanol-Water*

[CoTSPC] M x 10 ⁷	A	ϵ M ⁻¹ cm ⁻¹ (x 10 ⁻⁵)
2.30	0.0242	1.06
2.34	0.0244	1.04
1.81	0.0186	1.03
2.49	0.0259	1.04
1.58	0.0161	1.02
1.61	0.0172	1.07
2.24	0.0237	1.06
1.74	0.0181	1.05

*1 cm cell; $\lambda = 662$ nm

3.3 Simultaneous Determination of Monomer-Dimer Molar Absorption Coefficients.

The molar absorption coefficients of the monomer and dimer were determined at 662 nm corresponding to the peak absorbance for the monomer. A stock solution of CoTSPC and three aliquots of different volumes were used to prepare four solutions with different CoTSPC concentrations. The absorbances of these solutions were measured at 662 nm and the absorbances fit to equation 5 with the nonlinear least-squares program to give best-fit values of ϵ_M , ϵ_D , and K, and absorbances recalculated with these values.

Sets of solutions were prepared from four stock solutions (A, B, C, and D) and the absorbances for each set of solutions were measured over the temperature range 15° to 45°C at 5°C intervals. In order to get the calculation to converge, it was necessary to use numbers near unity, so the concentrations of CoTSPC were multiplied by 10⁵. In a few instances, negative best-fit values of ϵ_D or K were computed, or the magnitude of the standard deviation exceeded the value of ϵ_D . Where negative or near-zero values were encountered, the values of ϵ_M and ϵ_D were both discarded. Values of ϵ_D were discarded where the standard deviation exceeded the computed value.

Appendix A contains the results of these experiments. Table 3 summarizes the values of ϵ_M and ϵ_D along with the mean value and sample standard deviation for each solution over the indicated temperature range. The values of ϵ_M and ϵ_D averaged over the four solutions are $9.65 \pm 0.6 \times 10^4 \text{ M}^{-1} \text{ cm}^{-1}$ and $7.62 \pm 0.8 \times 10^4 \text{ M}^{-1} \text{ cm}^{-1}$, respectively, the error being the sample standard deviation. The value of ϵ_M compares favorably with the $1.05 \times 10^5 \text{ M}^{-1} \text{ cm}^{-1}$ measured

Table 3. Summary of ϵ_M and ϵ_D Computed from Least-Squares Treatment of Absorbances versus CoTSPC Concentration at 662 nm

Temperature °C	ϵ_M for solution				ϵ_D for solution			
	A	B	C	D	A	B	C	D
	$M^{-1}cm^{-1} \times 10^{-4}$				$M^{-1}cm^{-1} \times 10^{-4}$			
16.1	9.23	9.25	8.32	*	7.04	6.94	6.34	*
20.1	9.49	8.54	9.08	9.32	8.30	6.58	6.64	7.55
24.2	10.7	9.04	9.07	8.98	8.30	6.64	7.25	6.65
29.6	10.3	10.7	9.28	13.5	8.82	8.34	7.19	9.59
34.6	9.10	*	*	9.4	3.42	*	*	7.00
41.0	9.51	*	*	10.8	**	*	*	10.3
45.6	9.90	9.55	9.34	10.2	8.76	7.32	**	11.0
Mean	9.75	9.42	9.02	10.4	7.44	7.17	6.80	8.68
Sample Standard Deviation	0.6	0.8	0.4	1.7	2.1	0.9	0.5	1.8

* Negative value of ϵ_M , ϵ_D , or K

** Standard deviation exceeds value

in the dilute ethanolic-aqueous solution, considering the associated errors. Monahan also reported a similar error in his determinations.¹⁰

In order to obtain dimerization constants, the absorbance versus concentration data were refit to equation 5 using fixed values of ϵ_M and ϵ_D . The best fit dimerization constants and absorbances calculated with them are listed in appendix B. The difference between the calculated and experimental absorbances is generally within experimental error. Table 4 summarizes the dimerization constants determined with fixed values of ϵ_M and ϵ_D .

As a further check on the self-consistency of this method for determining dimerization constants, a set of absorbances was then measured for new solutions which had not been used to compute the values of ϵ_M and ϵ_D . Appendix C summarizes the results of these experiments. Table 5 lists the values as K', the dimerization constants for solutions independent of the determination of ϵ_M and ϵ_D . Table 6 compares the values of K and K' at the various temperatures.

Table 4. Summary of Dimerization Constants Determined with ϵ_M and ϵ_D Fixed*

Temperature	K of Solution				Mean	Sample Standard Deviation
	A	B	C	D		
°C	$M^{-1} \times 10^{-5}$					
16.1	4.04	4.42	4.29	4.93	4.17	0.22
20.1	2.75	3.22	3.11	2.99	3.02	0.20
24.2	2.23	3.51	2.45	2.34	2.38	0.12
29.6	1.70	1.78	1.83	1.76	1.77	0.05
34.6	1.12	1.23	1.22	1.18	1.19	0.05
41.0	0.758	0.829	0.856	0.815	0.814	0.04
45.6	0.572	0.639	0.604	0.565	0.595	0.03

* $\epsilon_M = 9.65 \times 10^4 M^{-1} cm^{-1}$; $\epsilon_D = 7.52 \times 10^4 M^{-1} cm^{-1}$ at $\lambda = 662 nm$

Table 5. Summary of Dimerization Constants with Solutions* Which Were not Used for Determining ϵ_M and ϵ_D

Temperature	K' of Solution				Mean	Sample Standard Deviation
	A	B	C	D		
°C	$M^{-1} \times 10^{-5}$					
20.1	3.21	2.97	2.95	3.09	3.06	0.12
24.9	2.19	2.13	2.00	2.07	2.10	0.08
29.6	1.77	1.59	1.58	1.64	1.64	0.09
34.2	1.28	1.19	1.10	1.20	1.19	0.07
41.0	0.803	0.754	0.710	0.716	0.746	0.04

* $\epsilon_M = 9.65 \times 10^4 M^{-1} cm^{-1}$; $\epsilon_D = 7.52 \times 10^4 M^{-1} cm^{-1}$ at $\lambda = 662 nm$

Table 6. Comparison of Mean Dimerization Constants*

Temperature	K	K'
°C	M ⁻¹ x 10 ^{-5**}	M ⁻¹ x 10 ⁻⁵
16.1	4.17 ± 0.22	-
20.1	3.02 ± 0.20	3.06 ± 0.12
24.2	2.38 ± 0.12	-
24.9	-	2.1 ± 0.08
29.6	177 ± 0.05	1.64 ± 0.09
34.2	-	1.19 ± 0.07
34.6	1.19 ± 0.05	-
41.0	0.814 ± 0.04	0.746 ± 0.04
45.6	0.595 ± 0.03	-

* Error expressed as sample standard deviation.

** Determined with solutions used to establish values for molar absorption coefficients.

Since the dimerization constants were measured in dilute CoTSPC solutions (10⁻⁵ to 10⁻⁶M), one can assume that these dimerization constants represent the thermodynamic equilibrium constants from which the standard-state free energy, ΔF°, can be determined through the familiar expression

$$\Delta F^\circ = -RT \ln(K) \quad (7)$$

The temperature dependence of ΔF° can then be used to determine the standard-state enthalpy and entropy of dimerization.

Figure 3 illustrates a plot of ln(K) versus 1/T suggesting that the enthalpy is independent of temperature. Values of ΔH° and ΔS° were then determined with the nonlinear, least-squares program by fitting the data in table 6 to

$$K = e \left(-\frac{\Delta H^\circ}{RT} + \frac{\Delta S^\circ}{R} \right) \quad (8)$$

The best-fit values of ΔH° and ΔS° are 12.0 ± 0.03 kcal/mole and -16 ± 1 cal/mole-K, respectively, with the error expressed as the standard deviation of the mean, an output of the program.¹² Table 7 compares dimerization constants calculated with the best-fit values of ΔH° and ΔS° with the experimental values.

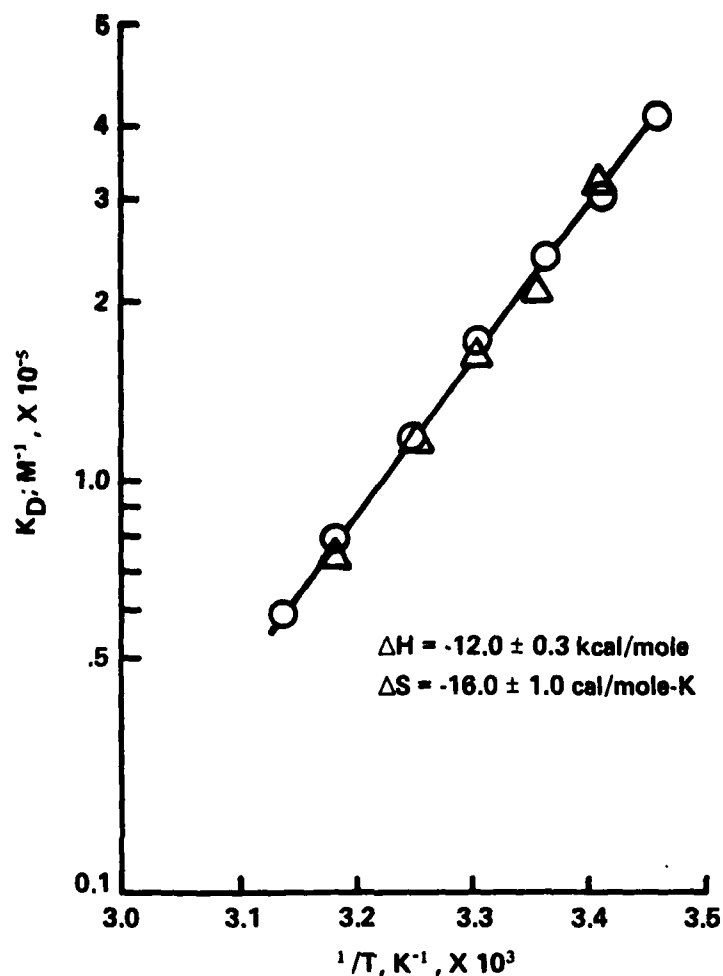


Figure 3. Temperature Dependence of the Dimerization Constant of CoTSPC in Water; (Δ) Data Points Represent K'_0

Recently, Blandamer and co-workers¹⁵ have questioned the physical significance of the values obtained from least-squares treatment of the temperature dependence of rate or equilibrium data, particularly when the parameters being fit have unit correlation coefficients, as is the case here. These workers propose the following expression¹⁶ for determining activation parameters as well as checking the temperature dependence of ΔH° :

$$K = K_0 e \left\{ \frac{\Delta H_0^\circ}{R} \left(\frac{1}{T_0} - \frac{1}{T} \right) + \frac{\Delta C_p^\circ}{R} \left(\ln \frac{T}{T_0} + \frac{T_0}{T} + 1 \right) \right\} \quad (9)$$

where

- K = equilibrium constant at T
- K_0 = equilibrium constant at T_0
- ΔC_p° = standard heat capacity.

Table 7. Comparison Between Experimental Dimerization Constant and Those Calculated with Best-Fit Activation Parameters*

Temperature °C	K Experiment $M^{-1} \times 10^{-5}$	K Fit $M^{-1} \times 10^{-5}$
16.1	4.17	4.13
20.1	3.02; 3.06	3.10
24.2	2.38	2.33
24.9	2.10	2.22
29.6	1.77; 1.64	1.62
34.2	1.19	1.20
34.6	1.19	1.17
41.0	0.814; 0.746	0.784
45.6	0.595	0.593

* $\Delta H^\circ = -12.0 \pm 0.3$ kcal/mole; $\Delta S^\circ = -16 \pm 1$ cal/mole - K.

This equation is obtained from integration of the van't Hoff isochore between T_0 and T which assumes ΔC_p° is independent of temperature. The quantities K and K_0 are the equilibrium constants at T and T_0 , respectively, and ΔH_0° is the enthalpy at T_0 . For a set of K , T data, any pair are selected as K_0 and T_0 , and the remaining values fit to equation 9 to find best-fit values of ΔH_0° at T_0 and ΔC_p° . The calculation is repeated with new values of K_0 , T_0 until values of ΔH_0° and ΔC_p° have been obtained for each value of T in the data set.

The non-linear least-squares program was modified for fitting the K , T data in table 6 to equation 9, in which ΔH_0° and ΔC_p° were parameters to be fit while K_0 and T_0 were inserted as fixed parameters. Table 8 summarizes the results of determinations of ΔH° and ΔC_p° at each of the nine temperatures from table 6. One sees that the enthalpy is independent of temperature, and the mean value of ΔH° , -12.0 ± 0.6 kcal/mole (error representing sample standard deviation), is identical to the value of -12.0 ± 0.3 kcal/mole obtained from fitting the K , T data to equation 8.

Finally, table 9 lists the results Eyring⁷ obtained for the thermodynamics of CoTSPC dimerization from kinetic and spectrophotometric methods at 38°, 48°, and 58°C. The agreement with the thermodynamic parameters measured kinetically is gratifying.

Table 8. Results of Calculations to Determine ΔH° Using Equation 9

Temp °C	ΔH° kcal/mole	ΔC_p° cal/mole-K
16.1	-12.4 \pm 0.6	28 \pm 68*
20.1	-11.2 \pm 0.8	54 \pm 95
24.2	-11.1 \pm 0.7	-156 \pm 117
24.9	-12.3 \pm 1.0	154 \pm 151
29.6	-11.4 \pm 0.5	-230 \pm 118
34.2	-12.2 \pm 0.7	- 39 \pm 117
34.6	-12.0 \pm 0.7	- 63 \pm 108
40.1	-12.7 \pm 0.8	- 80 \pm 87
45.6	-12.6 \pm 0.7	- 53 \pm 62

*Error represents standard deviation of the mean.

Table 9. Thermodynamic Parameters for CoTSPC Dimerization in Water

ΔH° kcal/mole	ΔS° cal/mole-K	Method	Reference
-12.6 \pm 1.3*	-14 \pm 4*	Ratio of rate coefficients	7
-14 \pm 0.9*	-18 \pm 3*	Spectrophotometric	7
-12.3 \pm 0.3**	-16 \pm 1**	Spectrophotometric	This work

* Error estimated by authors.

** Standard deviation of the mean.

These results suggest that this technique would be particularly useful in the study of other dye aggregation phenomena, such as the copper phthalocyanine system, where the pure monomer spectrum can not be obtained. We also plan to use this technique to determine the effect of hydroxylic solvents on phthalocyanine aggregation.

4. CONCLUSIONS

a. A spectrophotometric method that does not require the monomer spectrum to be known in advance has been devised for measuring the equilibrium between monomer and dimer.

b. The method was illustrated using cobalt (II) tetrasulfonated phthalocyanine, for which the dimerization constant was measured at 5° intervals over the temperature range 15° to 45°C. It was shown that the enthalpy of reaction is independent of temperature over this range, being -12.0 ± 0.3 kcal/mole with corresponding entropy of -16 ± 1 cal/mole K.

LITERATURE CITED

1. Duff, D. G. and Giles, C. H. "Dyestuffs," in *Water, A Comprehensive Treatise*. F. Frank, ed. Vol. I, Chap 3, pp 169 to 207. Plenum Press, New York and London. 1975.
2. Abel, A. W., Pratt, J. M., and Whelan, R. The Association of Cobalt (II) Tetrasulfophthalocyanine. *J. Chem. Soc. Dalton Trans.* pp 509 to 514. 1976.
3. Reynolds, W. L. and Kolstad, J. J. Aggregation of 4,4',4'',4'''-Tetrasulfophthalocyanine in Electrolyte Solutions. *J. Inorg. Nuc. Chem.* 38, 1835 to 1838 (1976).
4. Blagrove, R. J. and Gruen, L. C. The Aggregation of the Tetrasodium Salt of Copper Phthalocyanine 4,4',4'',4'''-Tetrasulfonic Acid. *Aust. J. Chem.* 25, 2553 to 2558 (1972).
5. Farina, R. D., Halko, D. J., and Swinehart, J. H. A Kinetic Study of the Monomer-Dimer Equilibrium in Aqueous Vanadium (IV), Tetrasulfophthalocyanine Solutions. *J. Phys. Chem.* 76, 2343 to 2348 (1972).
6. Sigel, H., Waldmeier, P., Prijs, B. The Dimerization, Polymerization, and Hydrolysis of FeIII-4,4',4'',4'''-Tetrasulfophthalocyanine. *Inorg. Nucl. Chem. Letters.* 7, 161 to 169 (1971).
7. Schelly, Z. A., Harward, D. J., Hemmes, P., and Eyring, E. M. Bonding in Dye Aggregates. Energetics of the Dimerization of Aqueous Cobalt (II)-4,4',4'',4'''-Tetrasulfophthalocyanine Ion. *J. Phys. Chem.* 74, 3040 to 3042 (1970).
8. Fenkart, K., and Brubaker, C. H., Equilibria Among the Species Present in Aqueous Solutions Containing the Manganese (III) Complex with 4,4',4'',4'''-Tetrasulfophthalocyanate Ion. *J. Inorg. Nuc. Chem.* 30, 3245 to 3251 (1968).
9. West, W. and Pearce, S. The Dimeric State of Cyanine Dyes. *J. Phys. Chem.* 69, 1894 to 1903 (1965).
10. Monahan, A. R., and Blossey, D. F. The Aggregation of Arylazonaphthols I. Dimerization of Bonadur Red in Aqueous and Methanolic Solutions. *J. Phys. Chem.* 74, 4014 to 4021 (1970).
11. Weber, J. H., and Busch, D. H. Complexes Derived from Stong-Field Ligands XIX. Magnetic Properties of Transition Metal Derivatives of 4,4',4'',4'''-Tetrasulfophthalocyanine. *Inorg. Chem.* 4, 469 to 471 (1965).
12. Moore, R. H., and Ziegler, R. K. Los Alamos Scientific Laboratory Report LA-2367. The Solution of the General Least Squares Problem with Special Reference to High-Speed Computers. March 1960.
13. Schelly, Z. A., Farina, R. D., and Eyring, E. M. A Concentration-Jump Relation Method Study on the Kinetics of the Dimerization of the Tetrasodium Salt of Aqueous Cobalt (II)-4,4',4'',4'''-Tetrasulfophthalocyanines. *J. Phys. Chem.* 74, 617 to 620 (1970).

14. Gruen, L. C. and Blagrove, R. J. The Aggregation and Reaction with Oxygen of the Tetrasodium Salt of Cobalt Phthalocyanine-4,4',4'',4'''-Tetrasulfonic Acid. *Aust. J. Chem.* 74, 617 to 620 (1970).

15. Blandamer, M. J., Robertson, R. E., and Scott, J. M. W. An Examination of Parameters Describing the Dependence of Rate Constants on Temperature for Solvolysis of Various Organic Esters in Water and Aqueous Mixtures. *Can. J. Chem.* 58, 772 to 776 (1980).

16. Blandamer, M. J., Robertson, R. E., Scott, J. M. W., and Vrielink, A. Evidence for the Incursion of Intermediates with Hydrolysis of Primary, Secondary, and Tertiary Substrates. *J. Am. Chem. Soc.* 102, 2585 to 2592 (1980).

APPENDIX A

ABSORBANCE MEASUREMENTS AT 662 nm TO DETERMINE ϵ_M AND ϵ_D

Table A-1. Determination of ϵ_M and ϵ_D for Solution A

[CoTSPC], M x 10 ⁶	Temperature													
	16.1°C		20.1°C		24.2°C		29.6°C		34.6°C		41.0°C		45.6°C	
	A _e ^a	A _f ^b	A _e	A _f	A _e	A _f	A _e	A _f	A _e	A _f	A _e	A _f	A _e	A _f
8.09	0.457	0.457	0.485	0.485	0.498	0.498	0.519	0.519	0.549	0.549	0.579	0.579	0.498	0.498
4.04	0.253	0.253	0.265	0.265	0.274	0.274	0.284	0.284	0.306	0.306	0.324	0.324	0.329	0.329
2.02	0.140	0.140	0.144	0.145	0.152	0.152	0.156	0.156	0.164	0.165	0.173	0.174	0.175	0.176
0.809	0.063	0.063	0.065	0.065	0.069	0.069	0.070	0.070	0.071	0.070	0.075	0.074	0.076	0.075
$\epsilon_M, M^{-1}cm^{-1} \times 10^{-5}$	-	0.923	-	0.949	-	1.07	-	1.03	-	0.910	-	0.951	-	0.990
$\epsilon_D, M^{-1}cm^{-1} \times 10^{-5}$	-	0.704	-	0.830	-	0.830	-	0.882	-	0.842	-	0.142 ^c	-	0.876
K, M ⁻¹ x 10 ⁻⁵	-	2.77	3.39	3.39	-	4.56	-	3.57	-	0.410	-	0.309	-	0.858

a Experimental absorbance

b Absorbance calculated with best-fit values

c Standard deviation exceeds value

Table A-2. Determination of ϵ_M and ϵ_D for Solution B

[CoTSPC], M x 10 ⁶	Temperature													
	16.1°C		20.1°C		24.2°C		29.9°C		34.9°C		41.0°C		45.0°C	
	A_e^a	A_f^b	A_e	A_f	A_e	A_f	A_e	A_f	A_e	A_f	A_e	A_f	A_e	A_f
1.07	0.490	0.490	0.521	0.521	0.539	0.539	0.567	0.567	0.597	0.597	0.632	0.632	0.632	0.650
4.54	0.276	0.276	0.290	0.290	0.300	0.300	0.315	0.313	0.335	0.335	0.335	0.354	0.360	0.360
2.27	0.154	0.153	0.156	0.150	0.165	0.165	0.170	0.173	0.178	0.179	0.184	0.185	0.183	0.183
0.907	0.060	0.060	0.070	0.071	0.073	0.073	0.080	0.078	0.076	0.075	0.079	0.077	0.082	0.082
$\epsilon_M^{-1} \text{ cm}^{-1} \times 10^{-5}$	-	0.925	-	0.854	-	0.904	-	1.07	-	0.853	-	0.856	-	0.955
$\epsilon_D^{-1} \text{ cm}^{-1} \times 10^{-5}$	-	0.694	-	0.685	-	0.664	-	0.834	-	-0.415 ^c	-	7.00 ^c	-	0.752
K, M ⁻¹ x 10 ⁻⁵	-	2.94	-	1.24	-	1.42	-	3.72	-	0.152	-	-0.020	-	0.976

a Experimental absorbance

b Absorbance calculated with best-fit values

c Standard deviation exceeds value

Table A-3. Determination of ϵ_M and ϵ_D for Solution C

[CoTSPC], M x 10 ⁶	Temperature													
	16.1°C		20.1°C		24.2°C		29.6°C		34.6°C		41.01°C		45.6°C	
	A _e ^a	A _f ^b	A _e	A _f	A _e	A _f	A _e	A _f	A _e	A _f	A _e	A _f	A _e	A _f
9.66	0.528	0.528	0.551	0.551	0.572	0.572	0.596	0.596	0.630	0.630	0.665	0.665	0.698	0.698
4.83	0.294	0.293	0.309	0.307	0.317	0.316	0.330	0.330	0.355	0.354	0.370	0.369	0.387	0.386
2.42	0.161	0.162	0.167	0.170	0.172	0.173	0.181	0.181	0.190	0.192	0.196	0.197	0.206	0.207
0.966	0.072	0.071	0.078	0.076	0.078	0.077	0.080	0.080	0.083	0.081	0.084	0.082	0.088	0.087
$\epsilon_M, M^{-1}cm^{-1} \times 10^{-5}$	-	0.832	-	0.908	-	0.907	-	0.928	-	0.879	-	0.882	-	0.934
$\epsilon_D, M^{-1}cm^{-1} \times 10^{-5}$	-	0.634	-	0.664	-	0.725	-	0.719	-	0.683 ^c	-	0.016 ^c	-	0.197 ^c
K, M ⁻¹ x 10 ⁻⁵	-	1.35	-	1.77	-	1.68	-	1.38	-	0.263	-	0.163	-	0.234

a Experimental absorbance

b Absorbance calculated with best-fit values

c Standard deviation exceeded value

Table A-4. Determination of ϵ_M and ϵ_D for Solution D

[CoTSPC], M x 10 ⁶	Temperature													
	16.1°C		20.1°C		24.2°C		29.6°C		34.6°C		41.0°C		45.6°C	
	A _e ^a	A _f ^b	A _e	A _f	A _e	A _f	A _e	A _f	A _e	A _f	A _e	A _f	A _e	A _f
5.78	0.341	0.341	0.358	0.358	0.370	0.371	0.387	0.387	0.410	0.410	0.431	0.432	0.454	0.453
4.33	0.274	0.271	0.280	0.280	0.293	0.290	0.302	0.301	0.319	0.320	0.337	0.335	0.347	0.349
2.89	0.188	0.192	0.197	0.197	0.202	0.205	0.212	0.213	0.225	0.224	0.232	0.234	0.245	0.243
1.44	0.104	0.102	0.108	0.108	0.112	0.111	0.118	0.118	0.120	0.120	0.127	0.126	0.128	0.129
$\epsilon_M, M^{-1}cm^{-1} \times 10^{-5}$	-	0.754	-	0.932	-	0.898	-	1.35	-	0.940	-	1.06	-	1.02
$\epsilon_D, M^{-1}cm^{-1} \times 10^{-5}$	-	-1.55 ^c	-	0.755	-	0.665	-	0.959	-	0.700	-	1.03	-	1.10
K, M ⁻¹ x 10 ⁻⁵	-	0.115	-	2.55	-	1.31	-	14.7 ^c	-	0.913	-	2.94	-	1.00

a Experimental absorbance

b Absorbance calculated with best-fit values

c Standard deviation exceeds value

APPENDIX B

DIMERIZATION CONSTANTS DETERMINED WITH
FIXED MOLAR ABSORPTION COEFFICIENTS

Table B-1. Determination of Best-Fit K with ϵ_M and ϵ_D Fixed - Solution A

[CoTSPC], M x 10 ⁶	Temperature													
	16.1°C		20.1°C		24.2°C		29.6°C		34.6°C		41.0°C		45.6°C	
	A _e ^a	A _f ^b	A _e	A _f	A _e	A _f	A _e	A _f	A _e	A _f	A _e	A _f	A _e	A _f
8.09	0.457	0.458	0.485	0.483	0.498	0.500	0.519	0.518	0.549	0.550	0.579	0.582	0.605	0.605
4.04	0.253	0.252	0.265	0.267	0.274	0.273	0.284	0.286	0.306	0.303	0.324	0.318	0.329	0.329
2.02	0.140	0.140	0.144	0.147	0.152	0.150	0.155	0.157	0.164	0.165	0.173	0.171	0.175	0.176
0.809	0.063	0.063	0.065	0.066	0.069	0.068	0.070	0.069	0.071	0.072	0.075	0.073	0.076	0.074
K.M ⁻¹ x 10 ⁻⁵	-	4.04	-	2.75	-	2.23	-	1.70	-	1.12	-	0.758	-	0.572

a Absorbance experimental

b Absorbance calculated with best-fit K

Table B-2. Determination of Best-Fit K with ϵ_M and ϵ_D Fixed - Solution B

[CoTSPC], M x 10 ⁶	Temperature													
	16.1°C		20.1°C		24.2°C		29.6°C		34.6°C		41.0°C		45.6°C	
	A _e ^a	A _f ^b	A _e	A _f	A _e	A _f	A _e	A _f	A _e	A _f	A _e	A _f	A _e	A _f
9.07	0.498	0.498	0.521	0.521	0.539	0.540	0.567	0.567	0.597	0.598	0.632	0.634	0.658	0.658
4.54	0.276	0.275	0.284	0.288	0.300	0.299	0.315	0.314	0.335	0.331	0.355	0.349	0.360	0.360
2.27	0.154	0.152	0.155	0.159	0.165	0.165	0.170	0.173	0.178	0.181	0.184	0.189	0.193	0.194
0.907	0.069	0.069	0.070	0.072	0.073	0.074	0.080	0.077	0.076	0.079	0.079	0.081	0.082	0.082
K, M ⁻¹ x 10 ⁻⁵	-	4.42	-	3.22	-	2.51	-	1.78	-	1.23	-	0.839	-	0.639

a Experimental absorbance

b Absorbance calculated with best-fit K

Table B-3. Determination of Best-Fit with ϵ_M and ϵ_D Fixed - Solution C

[CoTSP], M x 10 ⁶	Temperature													
	16.1°C		20.1°C		24.2°C		29.6°C		34.6°C		41.0°C		45.6°C	
	A _e ^a	A _f ^b	A _e	A _f	A _e	A _f	A _e	A _f	A _e	A _f	A _e	A _f	A _e	A _f
9.66	0.528	0.529	0.553	0.553	0.572	0.572	0.596	0.596	0.630	0.632	0.665	0.666	0.698	0.700
4.83	0.294	0.291	0.309	0.305	0.317	0.316	0.330	0.330	0.355	0.349	0.370	0.367	0.387	0.383
2.42	0.161	0.161	0.167	0.169	0.172	0.175	0.181	0.182	0.190	0.192	0.196	0.199	0.206	0.206
0.966	0.072	0.073	0.078	0.076	0.078	0.078	0.080	0.081	0.083	0.084	0.084	0.086	0.088	0.088
K.M ⁻¹ x 10 ⁻⁵	-	4.29	-	3.11	-	2.45	-	1.83	-	1.22	-	0.856	-	0.604

a Experimental absorbance

b Absorbance calculated with best-fit K

Table B-4. Determination of Best-Fit K with ϵ_M and ϵ_D Fixed - Solution D

[CoTSPC], M x 10 ⁶	Temperature													
	16.1°C		20.1°C		24.2°C		29.6°C		34.6°C		41.0°C		45.6°C	
	A _e ^a	A _f ^b	A _e	A _f	A _e	A _f	A _e	A _f	A _e	A _f	A _e	A _f	A _e	A _f
5.78	0.341	0.344	0.358	0.358	0.370	0.371	0.387	0.387	0.410	0.410	0.431	0.431	0.454	0.452
4.33	0.274	0.287	0.280	0.280	0.293	0.290	0.302	0.302	0.319	0.319	0.337	0.335	0.347	0.350
2.89	0.188	0.190	0.197	0.198	0.202	0.205	0.212	0.213	0.225	0.225	0.232	0.235	0.245	0.244
1.44	0.104	0.105	0.108	0.109	0.112	0.112	0.118	0.116	0.120	0.121	0.127	0.135	0.128	0.128
K, M ⁻¹ x 10 ⁻⁵	-	3.95	-	2.99	-	2.34	-	1.76	-	1.18	-	0.815	-	0.565

^a Experimental absorbance

^b Absorbance calculated with best-fit K

APPENDIX C

DIMERIZATION CONSTANTS FOR SOLUTIONS WHICH WERE NOT USED TO DETERMINE MOLAR ABSORPTION COEFFICIENTS

Table C-1. Determination of K with ϵ_M and ϵ_D Fixed - Solution A'

[CoTSPC] $M^{-1} \times 10^6$	Temperature											
	20.1°C		24.9°C		29.6°C		34.2°C		41.0°C			
	A_e^a	A_f^b	A_e	A_f	A_e	A_f	A_e	A_f	A_e	A_f	A_e	A_f
11.1	0.621	0.621	0.649	0.654	0.674	0.674	0.705	0.707	0.754	0.757		
8.34	0.485	0.485	0.512	0.512	0.527	0.528	c	-	0.592	0.593		
5.56	0.344	0.343	0.369	0.362	0.376	0.374	0.394	0.392	0.423	0.418		
2.78	0.186	0.190	0.203	0.203	0.207	0.206	0.217	0.215	0.230	0.230		
$K', M^{-1} \times 10^{-5}$	-	3.21	-	2.19	-	1.77	-	1.28	-	0.803		

a Experimental absorbance

b Absorbance calculated with best-fit K'

c Not determined

Table C-2. Determination of K with ϵ_M and ϵ_D Fixed - Solution B'

	Temperature									
	20.1°C		24.9°C		29.6°C		34.2°C		41.0°C	
	A_e^a	A_f^b	A_e	A_f	A_e	A_f	A_e	A_f	A_e	A_f
$[CoTSPC]M^{-1} \times 10^6$	0.454	0.453	0.477	0.475	0.497	0.496	0.517	0.517	0.551	0.552
	0.248	0.250	0.264	0.263	0.272	0.274	0.284	0.285	0.302	0.302
	0.138	0.138	0.145	0.145	0.149	0.150	0.158	0.155	0.167	0.162
$K', M^{-1} \times 10^{-5}$	-	2.97	-	2.13	-	1.59	-	1.19	-	0.754

a Experimental absorbance

b Absorbance calculated with best-fit K'

Table C-3. Determination of K with ϵ_M and ϵ_D Fixed - Solution C'

[CoTSPC] $M^{-1} \times 10^6$	Temperature											
	20.1°C		24.9°C		29.6°C		34.2°C		41.0°C			
	A_e^a	A_f^b	A_e	A_f	A_e	A_f	A_e	A_f	A_e	A_f	A_e	A_f
7.75	0.462	0.461	0.487	0.487	0.504	0.504	0.533	0.532	0.567	0.566		
3.88	0.254	0.255	0.272	0.270	0.280	0.279	0.292	0.293	0.307	0.310		
1.94	0.139	0.141	0.146	0.148	0.152	0.153	0.159	0.159	0.168	0.166		
$K', M^{-1} \times 10^{-5}$	-	2.59	-	2.00	-	1.58	-	1.10	-	0.710		

a Experimental absorbance

b Absorbance calculated with best-fit K'

Table C-4. Determination of K with ϵ_M and ϵ_D Fixed - Solution D'

[CoTSPC] $M^{-1} \times 10^6$	Temperature											
	20.1°C		24.9°C		29.6°C		34.2°C		41.0°C			
	A_e^a	A_f^b	A_e	A_f	A_e	A_f	A_e	A_f	A_e	A_f		
5.76	0.354	0.355	0.376	0.376	0.393	0.389	0.408	0.407	0.436	0.437		
4.32	0.280	0.278	0.294	0.294	0.306	0.304	0.318	0.318	0.341	0.340		
2.88	0.195	0.196	0.209	0.208	0.213	0.215	0.223	0.224	0.239	0.237		
$K', M^{-1} \times 10^{-5}$	-	3.09	-	2.07	-	1.64	-	1.20	-	0.716		

a Experimental absorbance

b Absorbance calculated with best-fit K'

DISTRIBUTION LIST 2

Names	Copies	Names	Copies
CHEMICAL SYSTEMS LABORATORY			
ATTN: DRDAR-CLB	1	Federal Emergency Management Agency	
ATTN: DRDAR-CLB-C	1	Office of Research/NPP	
ATTN: DRDAR-CLB-PO	1	ATTN: David W. Bensen	1
ATTN: DRDAR-CLB-R	1	Washington, DC 20472	
ATTN: DRDAR-CLB-R(M)	1	HQ DA	
ATTN: DRDAR-CLB-R(S)	1	Office of the Deputy Chief of Staff for	
ATTN: DRDAR-CLB-T	1	Research, Development & Acquisition	
ATTN: DRDAR-CLC-B	1	ATTN: DAMA-CSS-C	1
ATTN: DRDAR-CLC-C	1	Washington, DC 20310	
ATTN: DRDAR-CLC-E	1		
ATTN: DRDAR-CLF	1	HQ Sixth US Army	
ATTN: DRDAR-CLJ-R	1	ATTN: AFKC-OP-NBC	1
ATTN: DRDAR-CLJ-L	2	Presidio of San Francisco, CA 94129	
ATTN: DRDAR-CLJ-M	1		
ATTN: DRDAR-CLN	1	Commander	
ATTN: DRDAR-CLT	1	DARCOM, STITEUR	
ATTN: DRDAR-CLW-C	1	ATTN: DRXST-STI	1
ATTN: DRDAR-CLW-P	1	Box 48, APO New York 09710	
ATTN: DRDAR-CLY-A	1		
ATTN: DRDAR-CLY-R	1	Commander	
		USASTCFEO	
COPIES FOR AUTHOR(S)		ATTN: MAJ Mikeworth	1
Research Division	10	APO San Francisco 96328	
RECORD COPY: DRDAR-CLB-A	1		
		Commander	
DEPARTMENT OF DEFENSE			
		US Army Nuclear & Chemical Agency	
Defense Technical Information Center		ATTN: MONA-WE	1
ATTN: DTIC-DDA-2	12	7500 Backlick Rd, Bldg 2073	
Cameron Station, Building 5		Springfield, VA 22150	
Alexandria, VA 22314			
		Army Research Office	
Director		ATTN: DRXRO-CB (Dr. R. Ghirardelli)	1
Defense Intelligence Agency		P.O. Box 12211	
ATTN: DB-4G1	1	Research Triangle Park, NC 27709	
Washington, DC 20301			
		OFFICE OF THE SURGEON GENERAL	
Commander		Commander	
USASED, USAINCOM		US Army Medical Bioengineering Research	
ATTN: IAFM-SED-111	1	and Development Laboratory	
Fort Meade, MD 20755		ATTN: SGRD-UBD-AL, Bldg 568	1
		Fort Detrick, Frederick, MD 21701	
DEPARTMENT OF THE ARMY			
		Commander	
HQDA		USA Medical Research Institute of	
ATTN: DAMO-NCC	1	Chemical Defense	
ATTN: DAMO-NC/COL Robinson (P)	1	ATTN: SGRD-UV-L	1
WASH DC 20310		Aberdeen Proving Ground, MD 21010	

US ARMY MATERIEL DEVELOPMENT AND
READINESS COMMAND

Commander

US Army Materiel Development and
Readiness Command

ATTN: DRCLDC 1
ATTN: DRCSF-P 1
5001 Eisenhower Ave
Alexandria, VA 22333

Project Manager Smoke/Obscurants

ATTN: DRCPM-SMK-S 3
Aberdeen Proving Ground, MD 21005

Commander

US Army Foreign Science & Technology Center

ATTN: DRXST-MT3 1
220 Seventh St., NE
Charlottesville, VA 22901

Director

US Army Materiel Systems Analysis Activity

ATTN: DRXSY-MP 1
ATTN: DRXSY-CA (Mr. Metz) 1
Aberdeen Proving Ground, MD 21005

Commander

US Army Missile Command
Redstone Scientific Information Center

ATTN: DRSMI-RPR (Documents) 1
Redstone Arsenal, AL 35809

Director

DARCOM Field Safety Activity

ATTN: DRXOS-C 1
Charlestown, IN 47111

Commander

US Army Natick Research and Development
Laboratories

ATTN: DRDNA-O 1
ATTN: DRDNA-IC 1
ATTN: DRDNA-IM 1
ATTN: DRDNA-ITF (Dr. Roy W. Roth) 2
Natick, MA 01760

US ARMY ARMAMENT RESEARCH AND
DEVELOPMENT COMMAND

Commander

US Army Armament Research and
Development Command

ATTN: DRDAR-LCA-L 1
ATTN: DRDAR-LCE-C 1
ATTN: DRDAR-LCU-CE 1
ATTN: DRDAR-NC (COL Lynn) 3
ATTN: DRDAR-SCA-T 1
ATTN: DRDAR-SCM 1
ATTN: DRDAR-SCP 1
ATTN: DRDAR-SCS 1
ATTN: DRDAR-TDC (Dr. D. Gyrog) 1
ATTN: DRDAR-TSS 2
ATTN: DRCPM-CAWS-AM 1
Dover, NJ 07801

US Army Armament Research and
Development Command

Resident Operations Office

ATTN: DRDAR-TSE-OA (Robert Thresher) 1
National Space Technology Laboratories
NSTL Station, Mississippi 39529

Commander

ARRADCOM

ATTN: DRDAR-QAC-E 1
Aberdeen Proving Ground, MD 21010

Commander

USA Technical Detachment

US Naval EOD Technology Center
Indian Head, MD 20640

US ARMY ARMAMENT MATERIEL READINESS
COMMAND

Commander

US Army Armament Materiel Readiness Command

ATTN: DRSAR-ASN 1
ATTN: DRSAR-IRW 1
Rock Island, IL 61299

Commander

US Army Dugway Proving Ground

ATTN: Technical Library (Docu Sect) 1
Dugway, UT 84022

US ARMY TRAINING & DOCTRINE COMMAND

Commandant
US Army Infantry School
ATTN: CTDD, CSD, NBC Branch 1
Fort Benning, GA 31905

Commandant
US Army Missile & Munitions Center
and School
ATTN: ATSK-CM 1
ATTN: ATSK-TME 1
Redstone Arsenal, AL 35809

Commander
US Army Logistics Center
ATTN: ATCL-MG 1
Fort Lee, VA 23801

Commandant
US Army Chemical School
ATTN: ATZN-CM-C 1
ATTN: ATZN-CM-AD 2
ATTN: ATZN-CM-TPC 2
Fort McClellan, AL 36205

Commander
USAAVNC
ATTN: ATZQ-D-MS 1
Fort Rucker, AL 36362

Commander
US Army Infantry Center
ATTN: ATSH-CD-MS-C 1
Fort Benning, GA 31905

Commander
USA Training and Doctrine Command
ATTN: ATCD-N 1
Fort Monroe, VA 23651

Commander
US Army Armor Center
ATTN: ATZK-CD-MS 1
ATTN: ATZK-PPT-PO-C 1
Fort Knox, KY 40121

Commander
USA Combined Arms Center and
Fort Leavenworth
ATTN: ATZL-CAM-IM 1
Fort Leavenworth, KS 66027

US ARMY TEST & EVALUATION COMMAND

Commander
US Army Test & Evaluation Command
ATTN: DRSTE-CT-T 1
Aberdeen Proving Ground, MD 21005

DEPARTMENT OF THE NAVY

Chief of Naval Research
ATTN: Code 441 1
800 N. Quincy Street
Arlington, VA 22217

Project Manager
Theatre Nuclear Warfare Project Office
ATTN: TN-09C 1
Navy Department
Washington, DC 20360

Commander
Naval Explosive Ordnance Disposal
Technology Center
ATTN: AC-3 1
Indian Head, MD 20640

Commander
Naval Surface Weapons Center
Code G51 1
Dahlgren, VA 22448

Chief, Bureau of Medicine & Surgery
Department of the Navy
ATTN: MED 3C33 1
Washington, DC 20372

Commander
Naval Air Development Center
ATTN: Code 2012 (Dr. Robert Helmbold) 1
Warminster, PA 18974

US MARINE CORPS

Commandant
HQ, US Marine Corps
ATTN: Code LMW-50 1
Washington, DC 20380

Commanding General
Marine Corps Development and
Education Command
ATTN: Fire Power Division, D091 1
Quantico, VA 22134

DEPARTMENT OF THE AIR FORCE		AMD/RDSX	1
ASD/AESD	1	Brooks AFB, TX 78235	
Wright-Patterson AFB, OH 45433		AD/XRO	1
HQ AFSC/SDZ	1	Eglin AFB, FL 32542	
ATTN: CPT D. Riediger		OUTSIDE AGENCIES	
Andrews AFB, MD 20334		Battelle, Columbus Laboratories	
HQ, AFSC/SDNE	1	ATTN: TACTEC	1
Andrews AFB, MD 20334		505 King Avenue	
HQ, AFSC/SGB	1	Columbus, OH 43201	
Andrews AFB, DC 20334		Toxicology Information Center, JH 652	
HQ, NORAD	1	National Research Council	1
ATTN: J-3TU		2101 Constitution Ave., NW	
Peterson AFB, CO 80914		Washington, DC 20418	
AFAMRL/HE	1	US Public Health Service	
ATTN: Dr. Clyde Reploggle		Center for Disease Control	
Wright-Patterson AFB, OH 45433		ATTN: Lewis Webb, Jr.	1
HQ AFTEC/TEL	1	Building 4, Room 232	
Kirtland AFB, NM 87117		Atlanta, GA 30333	
USAF TAWC/THL	1	Director	
Eglin AFB, FL 32542		Central Intelligence Agency	
AFATL/DLV	1	ATTN: AMR/ORD/DD/S&T	1
Eglin AFB, FL 32542		Washington, DC 20505	
USAF SC	1	ADDITIONAL ADDRESSEE	
ATTN: AD/YQ		Commandant	
ATTN: AD/YQO (MAJ Owens)	1	Academy of Health Sciences, US Army	
Eglin AFB, FL 32542		ATTN: HSHA-CDH	1
USAFSAM/VN	1	ATTN: HSHA-IPM	2
Deputy for Chemical Defense		Fort Sam Houston, TX 78234	
ATTN: Dr. F. Wesley Baumgardner			
Brooks AFB, TX 78235			
AFAMRL/TS	1		
ATTN: COL Johnson			
Wright-Patterson AFB, OH 45433			
AMD/RDTK	1		
ATTN: LTC T. Kingery			
Brooks AFB, TX 78235			
AMD/RDSM	1		
Brooks AFB, TX 78235			

LME
— 8