

AD-A125 240

THE STABILITY OF ONE-STEP SCHEMES FOR FIRST-ORDER
TWO-POINT BOUNDARY VALU. (U) WISCONSIN UNIV-MADISON
MATHEMATICS RESEARCH CENTER C DE BOOR ET AL. NOV 82

1/1

UNCLASSIFIED

MRC-TSR-2448 DAR229-88-C-0041

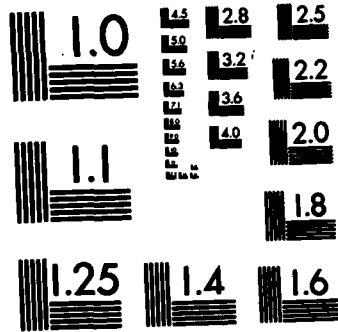
F/G 12/1

NL

END

FORMED

DATE



MICROCOPY RESOLUTION TEST CHART
NATIONAL BUREAU OF STANDARDS-1963-A

①

MRC Technical Summary Report #2448

AD A1 25240

THE STABILITY OF ONE-STEP SCHEMES
FOR FIRST-ORDER TWO-POINT
BOUNDARY VALUE PROBLEMS

C. de Boor, F. de Hoog
and
H. B. Keller

Mathematics Research Center
University of Wisconsin-Madison
610 Walnut Street
Madison, Wisconsin 53706

November 1982

DTIC FILE COPY

(Received November 9, 1982)

Approved for public release
Distribution unlimited

Sponsored by

U. S. Army Research Office
P. O. Box 12211
Research Triangle Park
North Carolina 27709

DTIC
UNCLASSIFIED

MAR 4 1983

A

83 02 028 114

UNIVERSITY OF WISCONSIN - MADISON
MATHEMATICS RESEARCH CENTER

THE STABILITY OF ONE-STEP SCHEMES FOR FIRST-ORDER
TWO-POINT BOUNDARY VALUE PROBLEMS

C. de Boor^{*}, F. de Hoog^{**} and H. B. Keller^{***}

Technical Summary Report #2448

November 1982

ABSTRACT

The stability of a finite difference scheme is related explicitly to the stability of the continuous problem being solved. At times, this gives materially better estimates for the stability constant than those obtained by the standard process of appealing to the stability of the numerical scheme for the associated initial value problem.

AMS (MOS) Subject Classifications: 65L10, 65L07

Key Words: two-point boundary value problem, ODE, BVP, stability, finite differences, shooting

Work Unit Number 3 - Numerical Analysis

* Mathematics Research Center, 610 Walnut Street, Madison, WI 53705.

** Division of Mathematics and Statistics, C.S.I.R.O., P. O. Box 1965, Canberra City, 2601, Australia

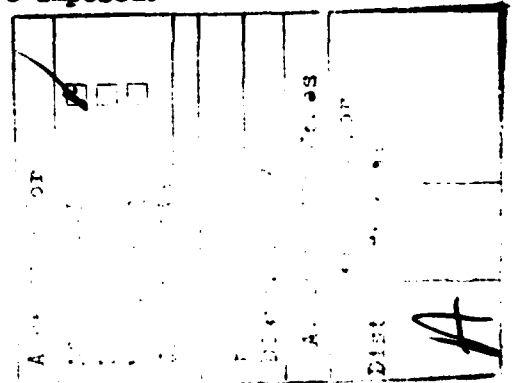
*** Applied Mathematics 101-50, Firestone Laboratory, California Institute of Technology, Pasadena, CA 91109.

Sponsored by the United States Army under Contract No. DAAG29-80-C-0041.

SIGNIFICANCE AND EXPLANATION

A popular explanation of the stability of finite difference schemes for two-point boundary value problems relates it to the stability of the associated initial value problem. In effect, use is made of the simple fact that, on a finite dimensional linear space (viz. the nullspace of the differential operator) and in any norm, any linear map is bounded. Numerically, the argument is equivalent to solving the problem by shooting. But, much as multiple shooting often is necessary to overcome the large stability constant of the initial value problem, so other means should or must be employed. Knowledge of this constant is important for judging the condition of the numerical scheme. Also, when solving a problem on an infinite interval by truncation, it is important to know just how the stability constant depends on the interval on which the problem is being solved.

In this note, we carry out this idea for a first-order system of linear ordinary differential equations and for one-step methods. The slightly more complicated case of multistep methods for a system of n -th order equations is treated in the companion paper de Boor & de Hoog [198?]. No mesh restrictions, such as uniformity or quasi-uniformity, are imposed.



The responsibility for the wording and views expressed in this descriptive summary lies with MRC, and not with the authors of this report.

The stability of one-step schemes for first-order two-point
boundary value problems

by

C. de Boor^{*}, F. de Hoog^{**} and H. B. Keller^{***}

1. Introduction. To paraphrase the first sentence in the preface to Raudkivi [1980], the stability of finite difference schemes for two-point boundary value problems "is well understood, but far from explained." A popular explanation (see, e.g., Keller [1976], Keller & White [1975], and a typical use in Esser & Niederdrenk [1980] or Lynch & Rice [1980]) relates it to the stability of the associated initial value problem. In effect, use is made of the simple fact that, on a finite dimensional linear space (viz. the nullspace of the differential operator) and in any norm, any linear map is bounded. Numerically, the argument is equivalent to solving the problem by shooting. But, much as multiple shooting often is necessary to overcome the large stability constant of the initial value problem, so other means should or must be employed if one is actually after the precise stability constant of the difference scheme employed. Knowledge of this constant is important for judging the condition of the numerical scheme. Also, when solving a problem on an infinite interval by truncation, it is important to know just how the stability constant depends on the interval on which the problem is being solved.

^{*} Mathematics Research Center, 610 Walnut Street, Madison, WI 53705.

^{**} Division of Mathematics and Statistics, C.S.I.R.O., P. O. Box 1965, Canberra City, 2601, Australia.

^{***} Applied Mathematics 101-50, Firestone Laboratory, California Institute of Technology, Pasadena, CA 91109.

The obvious source for this information is the stability constant of the continuous problem. Usually, the stability constant of the numerical scheme approaches that of the continuous problem as the meshsize goes to zero and hence can be inferred from the latter. This idea is implicit in Kreiss' [1972] treatment of finite difference schemes. The Soviet literature, as exemplified by Kantorovich & Akilov [1964], uses this idea explicitly in the abstract treatment of projection methods for the solution of second kind equations. It can also be found in the literature which follows Stummel (e.g., Grigorieff [1970]).

In this note, we carry out this idea for a first-order system of linear ordinary differential equations and for one-step methods. The slightly more complicated case of multistep methods for a system of n -th order equations is treated in the companion paper de Boer & de Hoog [1987]. No mesh restrictions, such as uniformity or quasi-uniformity, are imposed.

We consider the problem of finding the n -vector valued function $y:[0,T] \rightarrow \mathbb{R}^n$ which satisfies the differential equation

$$Ly = f \quad (1.1a)$$

with side condition

$$By = b. \quad (1.1b)$$

Here, L is the first order linear differential operator

$$Ly := y' - Ay$$

with $A:[0,T] \rightarrow \mathbb{R}^{n \times n}$ continuous, and

$$By := B_0 y(0) + B_T y(T),$$

with $B_0, B_T \in \mathbb{R}^{n \times n}$. The function $f:[0,T] \rightarrow \mathbb{R}^n$ and the n -vector b are given.

It is well known [see, e.g., Keller [1976;p.1]] that (1.1) has a solution if and only if the matrix BY is nonsingular, with Y any fundamental matrix for L , i.e.,

$$Y:[0,T] \rightarrow \mathbb{R}^{n \times n} \text{ such that } LY = 0.$$

In particular, assume that Y is the fundamental matrix associated with the initial value problem, i.e.,

$$Y: [0, T] \rightarrow \mathbb{R}^{n \times n}, \quad LY = 0, \quad Y(0) = I.$$

Further assume that BY is invertible. Then, for any $y \in (L_1^{(1)}[0, T])^n$,

$$y = \theta By + \int_0^T G(\cdot, s)(Ly)(s) ds \quad (1.2)$$

with

$$\theta(t) := Y(t)(BY)^{-1} \quad (1.3a)$$

and

$$G(t, s) := \begin{cases} \theta(t) B_0 \theta(0) \theta(s)^{-1}, & 0 < s < t \\ -\theta(t) B_T \theta(T) \theta(s)^{-1}, & t < s < T \end{cases} \quad (1.3b)$$

Knowledge of Y , hence of Green's function G , makes it possible to calculate stability constants. Denote by $|\cdot|$ any convenient norm in \mathbb{R}^n as well as the corresponding matrix norm. Also, let

$$\|y\|_p := \left(\int_0^T |y(t)|^p dt \right)^{1/p},$$

with $\|y\|_\infty := \sup_{t \in [0, T]} |y(t)|$ its limiting value as $p \rightarrow \infty$. Then (1.2) implies the differential stability relation

$$\|y\|_\infty < K \|By\| + c_p \|Ly\|_p, \quad (1.4)$$

with interior stability constant

$$\begin{aligned} c_p &:= \sup \{ \| \int_0^T G(\cdot, s) z(s) ds \|_\infty / \|z\|_p : z \in (L_p[0, T])^n \} \\ &= \| [\int_0^T |G(\cdot, s)|^q ds]^{1/q} \|_\infty, \quad 1/p + 1/q = 1, \end{aligned} \quad (1.5a)$$

and side condition stability constant

$$K := \| \theta \|_\infty. \quad (1.5b)$$

Of particular interest for us are the special choices $p = 1, \infty$ which give

$$c_1 = \|G\|_\infty, \quad \text{and} \quad c_\infty = \| \int_0^T |G(\cdot, s)| ds \|_\infty, \quad (1.6)$$

and correspond to measuring the size of Ly , i.e., of f in (1.1), by $\|f\|_1$ and $\|f\|_\infty$, respectively. It is worthwhile to consider both these choices, as the

following example illustrates. Choose

$$A = \begin{bmatrix} 0 & 1 \\ 1 & 0 \end{bmatrix}, \quad B_0 = \frac{1}{2} \begin{bmatrix} 1 & -1 \\ 0 & 0 \end{bmatrix}, \quad B_T = \frac{1}{2} \begin{bmatrix} 0 & 0 \\ 1 & 1 \end{bmatrix}.$$

Then

$$\Phi(t) = \begin{bmatrix} e^{-t} & e^{t-T} \\ -e^{-t} & e^{t-T} \end{bmatrix}, \quad G(t,s) = \begin{cases} \frac{e^{-t}}{2} \begin{bmatrix} 1 & -1 \\ -1 & 1 \end{bmatrix}, & s < t \\ \frac{e^{-s}}{2} \begin{bmatrix} 1 & 1 \\ 1 & 1 \end{bmatrix}, & t < s \end{cases}.$$

From this, one calculates

$$K = 1 + e^{-T}, \quad c_1 = 1, \quad c_\infty = 2(1 - e^{-T/2}).$$

If T is not large, then $p = 1$ is a desirable choice because it allows $f = Ly$ to have integrable singularities. On the other hand, if T is large, as would be the case when a boundary value problem on a semiinfinite interval is approximated by a problem on a finite interval, then $p = \infty$ may be more appropriate. For example, if $Ly = 1$, then $\|Ly\|_\infty = 1$ regardless of T , while $\|Ly\|_1 = T$, and so, use of $p = 1$ would lead to linear growth in T in the estimate (1.4).

It is obvious that c_p depends on the side conditions. In particular, the problem (1.1) may be well conditioned (i.e., have K and c_p of acceptable size) while the associated initial value problem is badly conditioned and vice versa. In any case, using the initial value problem to estimate the stability constants for (1.1) amounts to estimating the size of $|\Phi(t)|$ by $|Y(t)||(\Delta Y)^{-1}|$, and this may well be a bad overestimate.

2. Stability of one-step schemes. Let $A := (t_j)_0^N$ be a mesh for $[0, T]$, i.e.,

$$0 = t_0 < \dots < t_N = T.$$

For such a mesh, we use the abbreviations

$$h_j := t_{j+1} - t_j \quad \text{and} \quad h := \max_j h_j.$$

With any function $y: M \rightarrow \mathbb{R}^n$ defined on some set M containing Δ , we associate the step function χ and the broken line \tilde{y} . Both agree with y on Δ , i.e.,

$$y(t_j) = \chi(t_j) = \tilde{y}(t_j), \quad j=0, \dots, N.$$

The function χ is piecewise constant (in each component), with breakpoints t_1, \dots, t_N , and is continuous from the right, as is $D\tilde{y}$ (to be precise about it). The function \tilde{y} is piecewise linear, with breakpoints t_1, \dots, t_{N-1} , and continuous.

As is customary, we denote by

$$(\mathbb{R}^n)^\Delta$$

the collection of all n -vector valued mesh functions $y: \Delta \rightarrow \mathbb{R}^n$. We identify each such function y with its step function interpolant. In particular,

$$\|y\|_p := \|\chi\|_p = \left(\sum_{i=1}^N h_{i-1} |y_{i-1}|^p \right)^{1/p}.$$

Yet we use

$$y_j \text{ instead of } y(t_j)$$

for the value of y at t_j . We write χ instead of y if we want to stress the fact that y is a mesh function. Finally, we associate with any n -vector valued function y on $[0, T]$ the real valued mesh function $|y|_\Delta$ given by

$$|y|_{\Delta, j} := \sup \{ |y(t)| : t_j < t < t_{j+1} \}, \quad j=0, \dots, N-1.$$

We approximate the solution of (1.1) by the mesh function y which satisfies

$$\begin{aligned} L_\Delta y &= f \\ B y &= b \end{aligned} \tag{2.1}$$

with

$$(L_\Delta y)_j := \frac{y_{j+1} - y_j}{h_j} - (A_\Delta y)_j, \quad j=0, \dots, N-1.$$

Here, A_Δ is a linear map carrying mesh functions to mesh functions. We give examples later on.

In this section, we are not concerned with the details of this approximation to (1.1). We only give suitable conditions on A_Δ which allow us to connect the stab-

ility of the continuous problem (1.1) with that of the discrete problem (2.1). We begin with the following

Condition (p). There exist functions d_1 and d_2 independent of Δ such that

$$\|A_\Delta y - \tilde{A}y\|_{\Delta, p} < d_1(h) \|y\|_\infty + d_2(h) \|L_\Delta y\|_p, \text{ for all } y \in (\mathbb{R}^n)^\Delta. \quad (2.2)$$

Proposition 1. Let $1 < p < \infty$. If Condition (p) holds, then the difference stability relation

$$\|y\|_\infty < K \|By\| + c_p (1 + d_2(h)) \|L_\Delta y\|_p + c_p d_1(h) \|y\|_\infty \quad (2.3)$$

holds for all $y \in (\mathbb{R}^n)^\Delta$. If $d_2(h)$ stays bounded while $d_1(h) \rightarrow 0$ as $h \rightarrow 0$, this gives a stability constant for the discrete scheme (2.1) for all sufficiently small h . If also $d_2(h) \rightarrow 0$ as $h \rightarrow 0$, the resulting stability constant approaches that of the continuous problem.

Proof. For any mesh function y , we have

$$L\tilde{y} = L_\Delta y + A_\Delta y - \tilde{A}y.$$

Therefore, from the differential stability relation (1.4),

$$\|y\|_\infty = \|\tilde{y}\|_\infty < K \|By\| + c_p (\|L_\Delta y\|_p + \|A_\Delta y - \tilde{A}y\|_{\Delta, p}).$$

This together with (2.2) implies (2.3). |||

For any $1 < p < \infty$, Condition (p) is implied by the

Local Condition. There exist a function \bar{d}_1 and constants \bar{d}_2 and r independent of Δ such that

$$\|A_\Delta y - \tilde{A}y\|_{\Delta, j} < \bar{d}_1(h) \|y\|_\infty + \bar{d}_2 \sum_{|i-j| \leq r} h_i |(L_\Delta y)_i| \text{ for all } y \in (\mathbb{R}^n)^\Delta. \quad (2.4)$$

Explicitly, this Local Condition implies Condition (p) with $d_1 = T^{1/p} \bar{d}_1$ and $d_2(h) = (2r+1)h \bar{d}_2$. To derive this, note that

$$\left(\sum_{|i-j| \leq r} h_i |(L_\Delta y)_i| \right)^p < ((2r+1)h)^{p-1} \sum_{|i-j| \leq r} h_i |(L_\Delta y)_i|^p.$$

therefore

$$\| \Lambda_{\Delta} y - \tilde{\Lambda} y \|_{\Delta}^p < \tau^{1/p} \bar{d}_1(h) \|y\|_{\infty} + ((2r+1)h)^{p-1} \sum_j h_j \sum_{|i-j| \leq r} h_i |(L_{\Delta} y)_i|^p, \quad (2.4)$$

and the observation

$$\sum_j h_j \sum_{|i-j| \leq r} h_i |(L_{\Delta} y)_i|^p < h \sum_j \sum_{|i-j| \leq r} h_i |(L_{\Delta} y)_i|^p < (2r+1)h \|L_{\Delta} y\|_p^p$$

finishes the argument. The Local Condition also implies the following refined stability estimate.

Proposition 2. If the Local Condition holds, then the difference stability relation

$$\|y\|_{\infty} < K \|y\| + c_1 (1 + (2r+1)\bar{d}_2 h) \|L_{\Delta} y\|_1 + c_{\infty} \bar{d}_1(h) \|y\|_{\infty} \quad (2.5)$$

holds for all $y \in (\mathbb{R}^n)^{\Delta}$.

Proof. Now, from (1.2),

$$\|y\|_{\infty} < K \|y\| + c_1 \|L_{\Delta} y\|_1 + \int |G(\cdot, s)| |\Lambda_{\Delta} y - \tilde{\Lambda} y|_{\Delta}(s) ds \|y\|_{\infty}.$$

Here, with (2.4), the last term is bounded by

$$c_{\infty} \bar{d}_1(h) \|y\|_{\infty} + \bar{d}_2 \sum_j \int_{t_j}^{t_{j+1}} |G(\cdot, s)| ds \sum_{|i-j| \leq r} h_i |(L_{\Delta} y)_i| \|y\|_{\infty}$$

and, in this, the last term is bounded by

$$\bar{d}_2 \max_j h_j c_1 (2r+1) \|L_{\Delta} y\|_1. \quad |||$$

Remark. From (1.6) we see that $c_{\infty} < \tau c_1$. Thus (2.5) improves the final term of (2.3) and makes the h -dependence of the function d_2 in (2.3) explicit.

The argument for Proposition 1 is easily reversed.

Proposition 3. Let $1 < p < \infty$. If there exist functions e_1 and e_2 independent of Δ such that

$$\| \Lambda_{\Delta} x - \Lambda y \|_{\Delta}^p < e_1(h) \|y\|_{\infty} + e_2(h) \|L y\|_p \quad \text{for all } y \in (L_p^{(1)}[0, \tau])^n \quad (2.6)$$

and functions K and c_p so that, for all Δ with $h < h_0$,

$$|y|_{\infty} < K(h_0)|By| + c_p(h_0) \|L_{\Delta} y\|_p \quad \text{for all } y \in (\mathbb{R}^n)^{\Delta},$$

then

$$|y|_{\infty} < K(h_0)|By| + c_p(h_0)(1 + e_2(h)) \|L y\|_p + c_p(h_0)e_1(h)|y|_{\infty} \quad (2.7)$$

for all $y \in (L_p^{(1)})^n$ and all Δ with $h < h_0$. This provides a stability estimate for the continuous problem provided $e_2(h)$ remains bounded and $e_1(h) \rightarrow 0$ as $h \rightarrow 0$.

Proof. Let Δ be any mesh with $h < h_0$ and let $y \in (L_p^{(1)})^n$. By assumption,

$$|x|_{\infty} < K(h_0)|By| + c_p(h_0) \|L_{\Delta} x\|_p,$$

while

$$L_{\Delta} x = L\tilde{y} - (\Lambda_{\Delta} x - \Lambda\tilde{y}).$$

Therefore

$$|x|_{\infty} < K(h_0)|By| + c_p(h_0) \|L\tilde{y}\|_p + c_p(h_0) \|(\Lambda_{\Delta} x - \Lambda\tilde{y})\|_p,$$

and the bounds (2.6) now allow the conclusion that (2.7) holds, with y there replaced by \tilde{y} , for any sufficiently fine Δ . But then it must hold for y , too.

|||

3. Examples. A very transparent example is provided by the centered Euler scheme. In this scheme,

$$(L_{\Delta} y)_j = (L\tilde{y})(t_{j+1/2}), \quad \text{all } j,$$

hence

$$(\Lambda_{\Delta} y)_j = (\Lambda\tilde{y})(t_{j+1/2}) = \lambda(t_{j+1/2}) \frac{y_j + y_{j+1}}{2}.$$

Therefore, on the interval (t_j, t_{j+1}) ,

$$\Lambda_{\Delta} y - \Lambda\tilde{y} = (\Lambda\tilde{y})(t_{j+1/2}) - \Lambda\tilde{y} = (\lambda(t_{j+1/2}) - \lambda)\tilde{y} + \lambda(t_{j+1/2})(\tilde{y}(t_{j+1/2}) - \tilde{y}).$$

Further,

$$\tilde{y}(t_{j+1/2}) - \tilde{y}(t) = (t - t_{j+1/2})\tilde{y}'_{j+}$$

and

$$\tilde{y}'_{j+} = (L_{\Delta} y)_j + (\Lambda\tilde{y})(t_{j+1/2}).$$

Thus

$$|A_{\Delta}y - \tilde{A}y|_{\Delta,j} < (|A'|_{\infty} |y|_{\infty} + |A|_{\infty} |(L_{\Delta}y)_j| + |A|_{\infty}^2 |y|_{\infty}) h_j / 2 .$$

This shows that the Local Condition holds with $r = 0$, $\bar{d}_1(h) = h(|A'|_{\infty} + |A|_{\infty}^2)/2$, and $\bar{d}_2 = |A|_{\infty}/2$. Correspondingly, the stability constant for the centered Euler scheme is within $O(h)$ of the stability constant for the continuous problem being solved.

It is also possible to bound $|A_{\Delta}x - Ay|_{\Delta,j}$ in terms of Ly . We have

$$A_{\Delta}x - Ay = (A(t_{j+1/2}) - A)\tilde{y}(t_{j+1/2}) + A(\tilde{y}(t_{j+1/2}) - y)$$

on (t_j, t_{j+1}) . Further,

$$\tilde{y}(t_{j+1/2}) - y(t) = 1/2 \left(\int_t^{t_j} + \int_t^{t_{j+1}} \right) y'$$

and

$$y' = Ly + Ay .$$

Therefore

$$|A_{\Delta}x - Ay|_{\Delta,j} < |A'|_{\infty} h_j / 2 |y|_{\infty} + |A|_{\infty} / 2 \left(\int_{t_j}^{t_{j+1}} |(Ly)(s)| ds + |A|_{\infty} h_j |y|_{\infty} \right) .$$

This shows that (2.6) holds with $e_1(h) = h(|A'|_{\infty} + |A|_{\infty}^2)/2$ and $e_2(h) = h|A|_{\infty}/2$.

A slightly more involved example is given by the choice

$$(A_{\Delta}y)_j := \sum_{|k| \leq a} \alpha_{jk} A(t_{j+k}) y_{j+k} ,$$

with

$$\sum_k \alpha_{jk} = 1 ,$$

$$\alpha_{jk} = 0 , \text{ for } k \in [0, N]$$

$$\max_{j,k} |\alpha_{jk}| < a .$$

For this scheme and on (t_j, t_{j+1}) ,

$$\begin{aligned} A_{\Delta}y - \tilde{A}y &= \sum_k \alpha_{jk} A(t_{j+k}) \tilde{y}_{j+k} - \tilde{A}y \\ &= \sum_k \alpha_{jk} ((A\tilde{y})(t_{j+k}) - \tilde{A}y) \end{aligned}$$

and

$$(A\tilde{y})(t_{j+k}) - \tilde{A}y = (A(t_{j+k}) - A)\tilde{y} - A(t_{j+k})(\tilde{y}(t_{j+k}) - \tilde{y}) .$$

Now consider $\tilde{y}(t_{j+k}) - \tilde{y}$. If $k > 0$, then

$$\begin{aligned} \tilde{y}(t_{j+k}) - \tilde{y}(t) &= \tilde{y}(t_{j+k}) - \tilde{y}(t_{j+k-1}) + \dots + \tilde{y}(t_{j+1}) - \tilde{y}(t) \\ &= \sum_{m=1}^{k-1} h_{j+m} \tilde{y}'_{j+m} + (t_{j+1} - t) \tilde{y}'_j \\ &= \sum_{m=1}^{k-1} H_{j+m} [(L_{\Delta} y)_{j+m} + |L| \epsilon_{j+m} + e^{\lambda(t_{j+m+1} - t)} y_{j+m+1}], \end{aligned}$$

with

$$H_{j+m} := \begin{cases} h_{j+m} & , m > 0 \\ t_{j+1} - t & , m = 0 \end{cases}.$$

A similar formula holds for $k < 1$. From this, we conclude that the Local Condition is satisfied with $r = s$, $d_1(h) = h r^2 a (|A|_m + |A|_m^2 r a)$, and $d_2 = r a |A|_m$.

4. Related considerations. Certain discrete schemes are so closely related to the continuous problem that it is natural and advantageous to exploit this interplay directly. We consider two specific instances, multiple shooting and algorithms based on approximating the differential equation.

In Multiple Shooting applied to (1.1), we are led to the system

$$\begin{aligned} y_{j+1} - Y(t_{j+1})Y(t_j)^{-1}y_j &= g_j, \quad j=0, \dots, N-1, \\ B_0 y_0 + B_N y_N &= b, \end{aligned}$$

with $g_j := \int_{t_j}^{t_{j+1}} Y(t_{j+1})Y(s)^{-1}f(s)ds$, all j . A simple analysis of this system can be based on the fact that $y_j = \bar{y}(t_j)$, with \bar{y} the solution to the problem

$$L\bar{y} = \bar{g}, \quad B\bar{y} = b,$$

and

$$\bar{g} := Y Y(t_{j+1})^{-1} g_j / h_j \text{ on } (t_j, t_{j+1}).$$

Therefore

$$\bar{y} = \Phi b + \sum_{j=0}^{N-1} G(\cdot, t_{j+1}) d_j$$

and so

$$y_1 = \Phi(t_1) b + \sum_{j=0}^{N-1} G(t_1, t_{j+1}) d_j.$$

Under suitable assumptions, this leads to bounds for $\|y\|_\infty$ as, e.g., in Mattheij [1981].

As an example of the second kind of method, consider the approximating problem

$$L_{\Delta} y = f_{\Delta}, \quad By = b \quad (4.1)$$

with $L_{\Delta} y = y' - \underline{A}y$, and \underline{A} , \underline{f} piecewise constant approximations to A and f , respectively. Since $L_{\Delta} y = Ly + (L_{\Delta} - L)y$, we obtain

$$\|y\|_{\infty} \leq c_{\infty} \|Ly\|_{\infty} + K \|By\| + c_{\infty} \|A - \underline{A}\|_{\infty} \|y\|_{\infty}. \quad (4.2)$$

The approximating problem is therefore stable if

$$c_{\infty} \|A - \underline{A}\|_{\infty} < 1.$$

Often, c_{∞} may be quite small. For example, in many singular perturbation problems,

$$A = C/\epsilon \text{ and } c_{\infty} = d\epsilon,$$

therefore $1 - c_{\infty} \|A - \underline{A}\|_{\infty} = 1 - d\|C - \underline{C}\|_{\infty}$. In such a case, we conclude from (4.2) that

$$\|y\|_{\infty} \leq \frac{K \|By\| + d\|Ly\|}{1 - d\|C - \underline{C}\|_{\infty}}.$$

This implies that the convergence of the solution y of (4.1) to the solution y of (1.1) is uniform, since $L(y - \underline{y}) = -(A - \underline{A})y$ and $B(y - \underline{y}) = 0$, therefore

$$\|y - \underline{y}\|_{\infty} \leq d\|C - \underline{C}\|_{\infty} \|y\|_{\infty} / (1 - d\|C - \underline{C}\|_{\infty}).$$

References

- C. de Boor and F. de Hoog [1987], Stability of numerical schemes for two-point boundary value problems, ms
- H. Esser & K. Niederdröck [1980], Nichtäquidistante Diskretisierungen von Randwertaufgaben, Numer.Math. 35, 465-478.
- R. D. Grigorieff [1970], Die Konvergenz des Rand- und Eigenwertproblems gewöhnlicher Differenzgleichungen, Numer.Math. 15, 15-48.
- L. V. Kantorovich & G. P. Akilov [1964], Functional Analysis in Normed Spaces, Macmillan, New York.
- H. B. Keller [1976], Numerical Solution of Two Point Boundary Value Problems, SIAM, Philadelphia PA.
- H. B. Keller & A. B. White [1975], Difference methods for boundary value problems in ordinary differential equations, SIAM J.Numer.Anal. 12, 791-802.
- H.-O. Kreiss [1972], Difference approximations for boundary and eigenvalue problems for ordinary differential equations, Math.Comp. 10, 605-624.
- R. E. Lynch & J. R. Rice [1980], A high-order difference method for differential equations, Math.Comp. 34, 333-372.
- R. M. M. Mattheij [1981], The conditioning of linear boundary value problems, Report #7927, Math.Inst., Katholieke Univ. Nijmegen.
- A. J. Raudkivi [1980], Loose Boundary Hydraulics, 2nd ed., Pergamon Press, Oxford.

CdB/PdM/HBK/jvs

REPORT DOCUMENTATION PAGE		READ INSTRUCTIONS BEFORE COMPLETING FORM
1. REPORT NUMBER #2448	2. GOVT ACCESSION NO. A 125240	3. RECIPIENT'S CATALOG NUMBER
4. TITLE (and Subtitle) The Stability of One-Step Schemes for First-Order Two-Point Boundary Value Problems		5. TYPE OF REPORT & PERIOD COVERED Summary Report - no specific reporting period
		6. PERFORMING ORG. REPORT NUMBER
7. AUTHOR(s) C. de Boor, F. de Hoog and H. B. Keller		8. CONTRACT OR GRANT NUMBER(s) DAAG29-80-C-0041
9. PERFORMING ORGANIZATION NAME AND ADDRESS Mathematics Research Center, University of 610 Walnut Street Wisconsin Madison, Wisconsin 53706		10. PROGRAM ELEMENT, PROJECT, TASK AREA & WORK UNIT NUMBERS Work Unit Number 3 - Numerical Analysis
11. CONTROLLING OFFICE NAME AND ADDRESS U. S. Army Research Office P. O. Box 12211 Research Triangle Park, North Carolina 27709		12. REPORT DATE November 1982
14. MONITORING AGENCY NAME & ADDRESS (if different from Controlling Office)		13. NUMBER OF PAGES 12
		15. SECURITY CLASS. (of this report) UNCLASSIFIED
		15a. DECLASSIFICATION/DOWNGRADING SCHEDULE
16. DISTRIBUTION STATEMENT (of this Report) Approved for public release; distribution unlimited.		
17. DISTRIBUTION STATEMENT (of the abstract entered in Block 20, if different from Report)		
18. SUPPLEMENTARY NOTES		
19. KEY WORDS (Continue on reverse side if necessary and identify by block number) two-point boundary value problem, ODE, BVP, stability, finite differences, shooting		
20. ABSTRACT (Continue on reverse side if necessary and identify by block number) The stability of a finite difference scheme is related explicitly to the stability of the continuous problem being solved. At times, this gives materially better estimates for the stability constant than those obtained by the standard process of appealing to the stability of the numerical scheme for the associated initial value problem.		