

AD-A123 844

CONFIDENCE INTERVALS FOR FUNCTIONS OF VARIANCE
COMPONENTS(U) COLORADO STATE UNIV FORT COLLINS DEPT OF
STATISTICS F A GRAYBILL 14 OCT 82 N00014-78-C-0463

1/1

UNCLASSIFIED

F/G 12/1

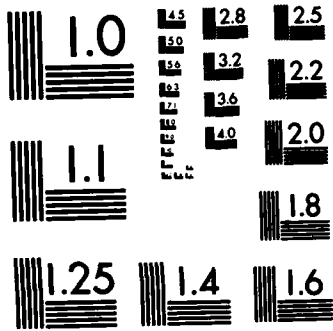
NL



END

FILMED

DTIC



MICROCOPY RESOLUTION TEST CHART
NATIONAL BUREAU OF STANDARDS-1963-A

2

Final Report on "Confidence Intervals for Functions of Variance Components." Contract Number N00014-78-C-0463

by

Franklin A. Graybill

In this research project confidence intervals were determined for the functions of variance components for the situations listed below. These included one-sided and two-sided confidence intervals.

Since no method is available for exact (exact confidence coefficients) for confidence intervals on the functions of variance components considered, confidence intervals with approximate confidence coefficients were examined. In each case large simulation studies were conducted to determine how good the confidence intervals are. In cases where alternative methods are available they were compared to the procedures in this project.

Confidence intervals were examined for the cases listed below.

Model

1. Two-fold nested model

$$Y_{ij} = \mu + A_i + B_{ij} + C_{ijk}$$

$$E[A_i] = E[B_{ij}] = E[C_{ijk}] = 0$$

$$\text{Var}[A_i] = \sigma_A^2; \text{var}[B_{ij}] = \sigma_B^2$$

$$\text{Var}[C_{ijk}] = \sigma_C^2. \text{ All random}$$

variables A_i, B_{ij}, C_{ijk}

are independent normal. Also

$i = 1, \dots, I; j = 1, \dots, J; k = 1, \dots, K.$

Confidence intervals on the following were determined

$$\sigma_A^2 + \sigma_B^2 + \sigma_C^2 = \sigma_{\text{Total}}^2 = \sigma_T^2;$$

$$\sigma_A^2/\sigma_T^2; \sigma_B^2/\sigma_T^2; \sigma_C^2/\sigma_T^2,$$

$$\sigma_A^2/\sigma_B^2, \sigma_A^2/(\sigma_A^2 + \sigma_B^2)$$

Accession For	
NTIS GRA&I	<input checked="" type="checkbox"/>
DTIC TAB	<input type="checkbox"/>
Unannounced	<input type="checkbox"/>
Justification	
By <u>Per Ltr. on file</u>	
Distribution/	
Availability Codes	
Dist	Avail and/or Special
A	

DTIC COPY IMPROVED 2

DTIC FILE COPY

ADA 123844

DISTRIBUTION STATEMENT A
Approved for public release
Distribution Unlimited

DTIC ELECTE
S JAN 27 1983 D

D

82 10 25 098

October 14, 1982

2. Three-way cross classification model with interactions

$$Y_{ijk} = \mu + A_i + B_j + F_{ij} + C_k + G_{ik} + H_{jk} + P_{ijk}$$

$$\mathcal{L}[A_i] = \mathcal{L}[B_j] = \mathcal{L}[F_{ij}] = \mathcal{L}[C_k] = \mathcal{L}[G_{ik}] = \mathcal{L}[H_{jk}] = \mathcal{L}[P_{ijk}] = 0.$$

$$\text{Var}[A_i] = \sigma_A^2; \text{var}[B_j] = \sigma_B^2; \text{var}[F_{ij}] = \sigma_F^2; \text{var}[C_k] = \sigma_C^2;$$

$$\text{Var}[G_{ik}] = \sigma_G^2; \text{var}[H_{jk}] = \sigma_H^2; \text{var}[P_{ijk}] = \sigma_P^2.$$

The random variables $A_i, B_j, F_{ij}, C_k, G_{ik}, H_{jk}, P_{ijk}$ are independent normal.

Also $i = 1, \dots, I; j = 1, \dots, J; k = 1, \dots, K.$

Confidence intervals on $\sigma_A^2, \sigma_B^2, \sigma_C^2$ were determined.

3. Two-way cross classification model without interaction

$$Y_{ij} = \mu + A_i + B_j + E_{ij}$$

$$\mathcal{L}[A_i] = \mathcal{L}[B_j] = \mathcal{L}[E_{ij}] = 0; \text{var}[A_i] = \sigma_A^2; \text{var}[B_j] = \sigma_B^2;$$

$$\text{var}[E_{ij}] = \sigma_E^2. \text{ The random variables } A_i, B_j, E_{ij} \text{ are independent normal. Also}$$

$i = 1, \dots, I; j = 1, \dots, J.$

Confidence intervals were determined on the following.

$$\sigma_T^2 = \sigma_A^2 + \sigma_B^2 + \sigma_E^2; \sigma_A^2/\sigma_T^2; \sigma_B^2/\sigma_T^2; \sigma_E^2/\sigma_T^2; \sigma_A^2/\sigma_B^2; \sigma_A^2/(\sigma_A^2 + \sigma_B^2); \sigma_B^2/(\sigma_A^2 + \sigma_B^2).$$

4. Two-way cross classification model with interaction

$$Y_{ijk} = \mu + A_i + B_j + G_{ij} + E_{ijk}$$

$$\mathcal{L}[A_i] = \mathcal{L}[B_j] = \mathcal{L}[G_{ij}] = \mathcal{L}[E_{ijk}] = 0; \text{var}[A_i] = \sigma_A^2; \text{var}[B_j] = \sigma_B^2; \text{var}[G_{ij}] = \sigma_G^2;$$

$$\text{var}[E_{ijk}] = \sigma_E^2. \text{ The random variables } A_i, B_j, G_{ij}, E_{ijk} \text{ are independent normal.}$$

Also $i = 1, \dots, I; j = 1, \dots, J; k = 1, \dots, K.$

Confidence intervals were determined for the following.

$$\sigma_T^2 = \sigma_A^2 + \sigma_B^2 + \sigma_G^2 + \sigma_E^2; \sigma_A^2/\sigma_T^2; \sigma_B^2/\sigma_T^2; \sigma_G^2/\sigma_T^2; \sigma_E^2/\sigma_T^2.$$

5. Let $U_i = n_i S_i^2 / \theta_i$ be independent chi-square random variables with n_i degrees of freedom for $i = 1, 2$, where S_i^2 are observable. Confidence intervals procedures were determined for $C_1 \theta_1 + C_2 \theta_2$ for $C_1 \geq 0, C_2 \geq 0$. These procedures were compared with standard procedures developed by Welch and Satterthwaite and found to be significantly better.

6. For the model considered in 5, a procedure was developed to determine "exact" $1 - \alpha$ confidence coefficients on $C_1 \theta_1 + C_2 \theta_2$ for $C_1 \geq 0, C_2 \geq 0$. The word "exact" means that for any $\epsilon > 0$ the confidence coefficient was within ϵ of the specified confidence coefficient $1 - \alpha$. These confidence intervals were compared with those in 5 and found to be better but not significantly better.

7. Let $U_i = n_i S_i^2 / \theta_i$ be independent chi-square random variables with n_i degrees of freedom for $i = 1, 2, 3$ where the S_i^2 are observable. Approximate confidence intervals were determined and evaluated for $C_1 \theta_1 + C_2 \theta_2 + C_3 \theta_3$ for $C_i \geq 0$. They were found to be better than the conventional procedures developed by Welch and Satterthwaite.

8. Let $U_i = n_i S_i^2 / \theta_i$ be independent chi-square random variables with n_i degrees of freedom for $i = 1, 2, 3, 4$ where the S_i^2 are observable. Approximate confidence intervals on θ were determined and evaluated where

$$\theta = \frac{C_1 \theta_1 + C_2 \theta_2}{C_3 \theta_3 + C_4 \theta_4}$$

where $C_i > 0$. It was found that a procedure using Satterthwaite's method was quite adequate.

9. Let $U_i = n_i S_i^2 / \theta_i$ be independent chi-square random variables with n_i degrees of freedom for $i = 1, 2$, where S_i^2 are observable. Approximate confidence intervals were obtained and evaluated for $C_1 \theta_1 - C_2 \theta_2$ where $C_i \geq 0$. These confidence intervals were quite good.
10. Let $U_i = n_i S_i^2 / \theta_i$ be independent chi-square random variables for $i = 1, 2, 3, 4$ where S_i^2 are observable. Approximate confidence intervals were considered for the functions of θ_i listed below. The procedures are in various stages of completion
- (a) $\theta_1 + \theta_2 - \theta_3$
 - (b) $(\theta_1 + \theta_2) / \theta_3$
 - (c) $\theta_1 + \theta_2 - \theta_3 - \theta_4$
 - (d) $(\theta_1 - \theta_2) / \theta_3$

11. One-factor nested model with unequal numbers

$$Y_{ij} = \mu + A_i + E_{ij}$$

$E[A_i] = E[E_{ij}] = 0$; $\text{var}[A_i] = \sigma_A^2$; $\text{var}[E_{ij}] = \sigma_E^2$. The random variables A_i, E_{ij}

are independent normal. Also $j = 1, \dots, n_i$; $i = 1, \dots, I$.

Approximate confidence intervals were derived for $\sigma_A^2 + \sigma_E^2$. This work is not yet completed.

UNCLASSIFIED

SECURITY CLASSIFICATION OF THIS PAGE (When Data Entered)

REPORT DOCUMENTATION PAGE		READ INSTRUCTIONS BEFORE COMPLETING FORM
1. REPORT NUMBER	2. GOVT ACCESSION NO. AD A123844	3. RECIPIENT'S CATALOG NUMBER
4. TITLE (and Subtitle) Final Report on "Confidence Intervals for Functions of Variance Components"		5. TYPE OF REPORT & PERIOD COVERED Final
		6. PERFORMING ORG. REPORT NUMBER
7. AUTHOR(s) Franklin A. Graybill		8. CONTRACT OR GRANT NUMBER(s) NR 042-402 N00014-78-C-0463
9. PERFORMING ORGANIZATION NAME AND ADDRESS Colorado State University Department of Statistics Fort Collins, Colorado 80523		10. PROGRAM ELEMENT, PROJECT, TASK AREA & WORK UNIT NUMBERS
11. CONTROLLING OFFICE NAME AND ADDRESS Office of Naval Research Statistics and Probability Program Arlington, VA 22217		12. REPORT DATE 14 October 1982
		13. NUMBER OF PAGES
14. MONITORING AGENCY NAME & ADDRESS (if different from Controlling Office)		15. SECURITY CLASS. (of this report) Unclassified
		15a. DECLASSIFICATION/DOWNGRADING SCHEDULE
16. DISTRIBUTION STATEMENT (of this Report) Approved for Public Release; Distribution Unlimited.		
17. DISTRIBUTION STATEMENT (of the abstract entered in Block 20, if different from Report)		
18. SUPPLEMENTARY NOTES		
19. KEY WORDS (Continue on reverse side if necessary and identify by block number)		
20. ABSTRACT (Continue on reverse side if necessary and identify by block number)		

DD FORM 1473
1 JAN 73

EDITION OF 1 NOV 65 IS OBSOLETE
S/N 0102-LF-014-6601

UNCLASSIFIED

SECURITY CLASSIFICATION OF THIS PAGE (When Data Entered)