

AD-A123 604

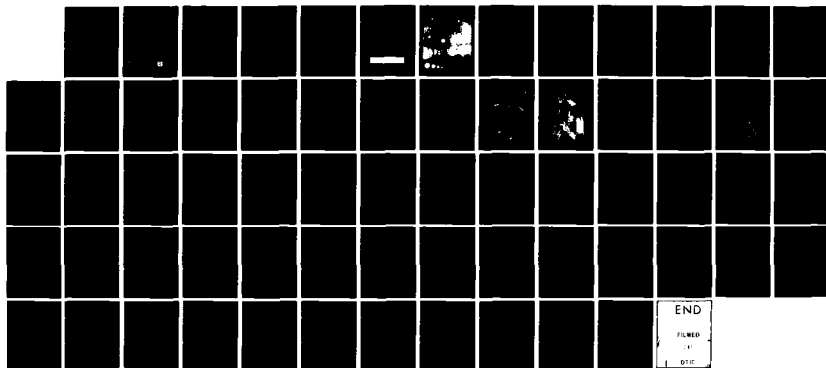
GUIDELINES AND DATA TO SUPPORT PLANS FOR REALLOCATING  
FOOD DURING CRISIS. (U) SYSTAN INC LOS ALTOS CA  
J W BILLHEIMER ET AL. SEP 82 SYSTAN-D180-APP-8  
EMW-C-0562

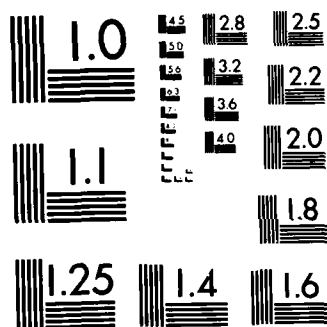
1/1

UNCLASSIFIED

F/G 15/3

NL





MICROCOPY RESOLUTION TEST CHART  
NATIONAL BUREAU OF STANDARDS-1963-A

4512D

①

GUIDELINES AND DATA TO SUPPORT  
PLANS FOR REALLOCATING FOOD  
DURING CRISIS RELOCATION

REGIONAL APPENDIX  
FEMA REGION VIII

ADA 123604

DTIC  
ELECTE  
JAN 20 1983  
S B

For

Federal Emergency Management Agency  
Washington, D.C. 20472  
Contract EMW-C-0562

SYSTAN Report D180  
September 1982

DISTRIBUTION STATEMENT A  
Approved for public release;  
Distribution Unlimited

S  
SYSTAN

DTIC FILE COPY

178

GUIDELINES AND DATA TO SUPPORT  
PLANS FOR REALLOCATING FOOD  
DURING CRISIS RELOCATION

REGIONAL APPENDICES  
FEMA REGION VIII

By  
John W. Billheimer  
Juliet McNally

For  
Federal Emergency Management Agency  
Washington, D.C. 20472  
Contract EMW-C-0562

SYSTAN Report D180  
September 1982

## TABLE OF CONTENTS

### APPENDIX A: REGIONAL DISTRIBUTION SUMMARY

Food Distribution Summary.....	A-1
Map Showing Dollar Volume of Major Food Distribution Centers.....	A-2
Intra- and Inter-Regional Shipments Summary.....	A-3

### APPENDIX B: STATE SUMMARIES FOR REGION VIII

Colorado.....	B-1
Montana.....	B-2
North Dakota.....	B-3
South Dakota.....	B-4
Utah.....	B-5
Wyoming.....	B-6

### APPENDIX C: TOP TEN DISTRIBUTORS

List of Top Ten Distributors Serving FEMA Region VIII.....	C-1, C-2
---	----------

### APPENDIX D: SAMPLE REALLOCATION PLAN FOR THE STATE OF COLORADO

Introduction.....	D-1
Current Food Distribution System.....	D-2
Exhibit 1: Evacuation Pattern.....	D-3
Exhibit 2: Current Distribution Pattern.....	D-4
Proposed Food Distribution System Adjustments For Crisis Relocation.....	D-5 - D-6
Exhibit 3: Post-Relocation Distribution Pattern.....	D-7
Exhibit 4: Revised Distribution Plans For Major Distributors.....	D-8 - D-14
Transportation Stress.....	D-15 - D-16
Attachments	
Attachment A-1: Existing Supermarket Sales of Major Distributors By County.....	D-17
Attachment A-2: Post-Relocation Supermarket Sales of Major Distributors.....	D-18
Attachment B: Two Truckloads Capable of Feeding 3800 People For One Week.....	D-19

### APPENDIX E: COUNTY LISTINGS

List of Counties Served By Each Distributor in FEMA Region VIII
--



PER FORM  
50

A		
---	--	--

APPENDIX A  
REGIONAL DISTRIBUTION SUMMARY

# FOOD DISTRIBUTION SUMMARY

## REGION VIII

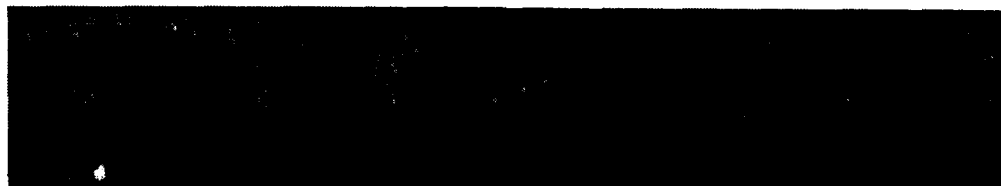
Nearly 90% of the food consumed in FEMA Region VIII is warehoused within the region. The table below summarizes the source and magnitude of all shipments from warehouses to supermarkets within the region. Four of the six states in FEMA Region VIII (Montana, North Dakota, Colorado and Utah) are largely self-sufficient, warehousing between 79% to 99% of their food supplies within their own borders. The fifth state, South Dakota, which warehouses only 23% of its own food stocks, is heavily dependent on out-of-region warehouses for food shipments. Over half of South Dakota's food stocks come from Minnesota and Wisconsin in Region V, and Nebraska and Iowa in Region VII, highlighting a need for interregional coordination. The sixth state, Wyoming, has no major food warehouses, and is therefore totally dependent on out-of-state warehouses for its food supplies. Over 86% of Wyoming's food stocks come from neighboring states within Region VIII (Colorado, Montana and Utah) so that interstate coordination will be essential under crisis relocation conditions.

## INTER- AND INTRA-STATE SHIPMENTS INTO

### FEMA REGION VIII

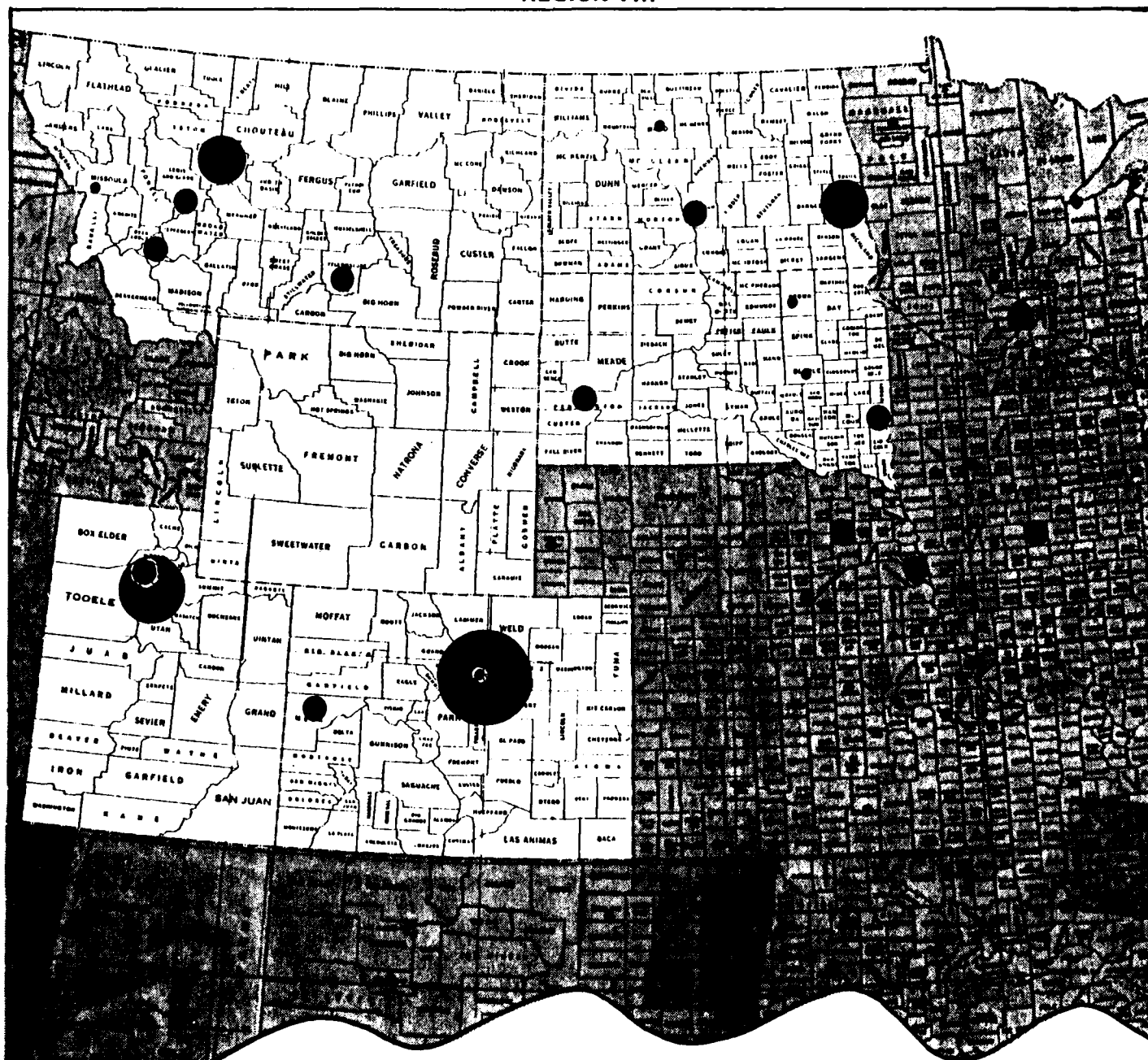
(Actual Cash Value in Millions of Dollars per Year)

SOURCE	DESTINATION					
	CO	MT	ND	SD	UT	WY
04 KY	0	2	0	0	0	0
05 MN	0	0	81	83	0	0
WI	0	0	3	21	0	0
06 NM	5	0	0	0	0	0
TX	2	0	0	0	0	0
07 IA	0	0	0	93	0	0
KS	16	0	0	3	0	0
NE	11	0	0	107	0	42



09 AZ	5	0	0	0	0	0
10 ID	0	3	0	0	0	6
OR	0	23	0	0	0	0
WA	0	104	0	0	0	0

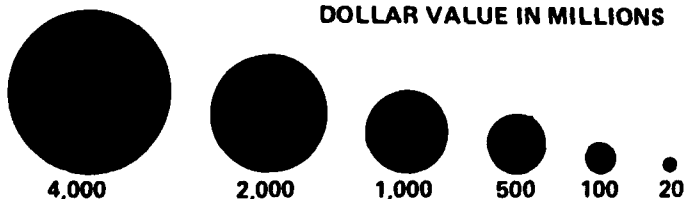
# DOLLAR VOLUME OF MAJOR FOOD DISTRIBUTION CENTERS REGION VIII



## OTHER STATES:

- OREGON 22.5 MILLIONS  
(Multnomah County)
- WASHINGTON 104.0 MILLIONS  
(Spokane County)
- KENTUCKY 1.5 MILLIONS  
(McCracken County)

## DOLLAR VALUE IN MILLIONS





**SUMMARY OF INTRA- AND INTER-REGIONAL  
FOOD SHIPMENTS  
(Warehouse to Supermarket)**

FEMA Region No.	Intra-Regional Shipments		Shipments from Out-of-Region		Total Food Shipments
	(\$ Million/Year)	(% of Total)	(\$ Million/Year)	(% of Total)	(\$ Million/Year)
1	8,352	90.4	884	9.6	9,236
2	15,771	89.9	1,762	10.1	17,539
3	16,077	86.7	2,474	13.3	18,551
4	31,061	95.6	1,432	4.4	32,493
5	31,795	93.8	2,114	6.2	33,909
6	19,171	92.5	1,548	7.5	20,719
7	8,889	93.8	588	6.2	9,478
8	5,127	89.4	609	10.6	5,736
9	22,405	99.6	98	0.4	22,503
10	6,160	89.9	691	10.1	6,851

APPENDIX B  
STATE SUMMARIES FOR FEMA REGION VIII

- Colorado
- Montana
- North Dakota
- South Dakota
- Utah
- Wyoming

## COLORADO SUMMARY

The statistical profile of food distribution in Region VIII shows that the supermarkets of Colorado are almost solely served by warehouses located within the state. Only 2% of the food currently reaching Colorado residents is warehoused outside the state. Thus little interstate coordination will be required in planning for food distribution to Colorado residents under crisis relocation conditions. Colorado itself plays a key role in the food supplies of other states, supplying roughly 41% of the food consumed in Wyoming, and 15% of the food consumed in New Mexico.

Four of the top ten distributors in Region VIII, Safeway Stores, Fry's Food Stores (known locally as King Soopers Inc. and City Markets Inc.), Associated Grocers of Colorado and Western Crocers, have warehouses in Colorado. These distributors account for 93% of the food stored for in-state consumption. The small amount of food that is warehoused outside Colorado comes mainly from 8 distributors in Kansas, Nebraska, New Mexico, Arizona and Utah.

The statistical profile describing food distribution in Region VIII, coupled with the FEMA food distribution guidelines, provide nuclear civil protection planners with a feasible approach for reallocating food supplies under conditions of crisis relocation. This statistical profile can be used to modify the Colorado food support annex to include food distribution details which are consistent with regional food distribution patterns.

## MONTANA SUMMARY

The statistical profile of food distribution in Region VIII shows that the supermarkets of Montana are largely served by warehouses located within the state. Approximately 79% of the food currently reaching Montana residents is warehoused within the state. The major out-of-state supplier is Washington (Region X), which warehouses roughly 15% of Montana's food stocks. These out-of-state suppliers serve a variety of counties, including the risk areas of Great Falls, Billings and Missoula. Thus there will be some requirement for interregional coordination in these risk areas. Montana itself plays a fairly important role in the food supplies of Wyoming, supplying 37% of the food consumed there.

Four of the top ten distributors in Region VIII, Safeway Stores, Associated Food Stores Inc., Super Valu Stores (known locally as Ryan Grocery Co. and Ryan Mercantile) and Jewel Food Stores (known locally as Buttrey Foods), have warehouses in Montana. These distributors account for 76% of the food stored for in-state consumption. Most of the food warehoused in other states is in the hands of 2 distributors (West Coast Grocery Co. and U R M Stores Inc.) in Washington, and 7 distributors in Oregon, Idaho, Utah, North Dakota and Kentucky.

The statistical profile describing food distribution in Region VIII, coupled with the FEMA food distribution guidelines, provide nuclear civil protection planners with a feasible approach for reallocating food supplies under conditions of crisis relocation. This statistical profile can be used to modify the Montana food support annex to include food distribution details which are consistent with regional food distribution patterns.

## NORTH DAKOTA SUMMARY

The statistical profile of food distribution in Region VIII shows that the supermarkets of North Dakota are largely served by warehouses located within the state. Approximately 80% of the food reaching North Dakota residents is warehoused within the state. The major out-of-state suppliers are a variety of distributors in Minnesota (Region V), which warehouse roughly 17% of North Dakota's food stocks. These out-of-state suppliers serve a variety of counties, including the risk areas of Fargo and Grand Fork. Thus there will be some requirement for interregional coordination in these risk areas.

Within North Dakota, three major distributors (Super Stores Inc., Nash-Finch Co. and Fairway Foods Inc.) account for 77% of the food stored for in-state consumption. Most the food warehoused in other states is in the hands of 5 distributors in Minnesota, while the remaining stocks warehoused in Wisconsin, Montana and South Dakota come mainly from 3 distributors.

The statistical profile describing food distribution in Region VIII, coupled with the FEMA food distribution guidelines, provide nuclear civil protection planners with a feasible approach for reallocating food supplies under conditions of crisis relocation. This statistical profile can be used to modify the North Dakota food support annex to include food distribution details which are consistent with regional food distribution patterns.

## SOUTH DAKOTA SUMMARY

The statistical profile of food distribution in Region VIII shows that South Dakota is heavily dependent on warehouses outside the state for its food supplies. Only 23% of the food currently reaching South Dakota residents is warehoused within the state. The major out-of-state suppliers are a variety of distributors located in Nebraska (which supply 20% of South Dakota's food stocks), Iowa (18%) and Minnesota (16%). In addition to these out-of-region states, warehouses located in other Region VIII states (North Dakota and Colorado) account for 19% of the food consumed in South Dakota. Thus interstate as well as interregional coordination will be required in planning for the distribution of food to South Dakota residents under crisis relocation conditions.

Within South Dakota, one of the top ten distributors in Region VIII, Nash-Finch Co. (known locally as Park Grant Co.), accounts for 22% of the food stored for in-state consumption. Most of the food warehoused in other states is in the hands of 6 distributors in Nebraska, 3 in Iowa, 2 in Minnesota, and 5 in North Dakota, Colorado, Wisconsin and Kansas.

The statistical profile describing food distribution in Region VIII, coupled with the FEMA food distribution guidelines, provide nuclear civil protection planners with a feasible approach for reallocating food supplies under conditions of crisis relocation. This statistical profile can be used to modify the South Dakota food support annex to include food distribution details which are consistent with regional food distribution patterns.

## UTAH SUMMARY

The statistical profile of food distribution in Region VIII shows that the supermarkets of Utah are almost solely served by warehouses located within the state. Only 1% of the food currently reaching Utah residents is warehoused outside the state boundaries. Thus little interstate coordination will be required in planning for food distribution to Utah residents under crisis relocation conditions. Utah itself plays an important role in the food supplies of other states, supplying roughly 46% of the food consumed in Idaho, and 11% of the food consumed in Wyoming.

Four of the top ten distributors in Region VIII, Safeway Stores Inc., Associated Food Stores Inc., Smiths Management Corp and Albertsons Inc., have warehouses in Utah. These distributors account for 84% of the food stored for in-state consumption. An additional 2 distributors (American Strevell and American Stores) account for another 13% of Utah's food supplies. These distributors, with the exception of Smiths Management Corp in Layton, maintain their warehouses in Salt Lake City. The small amount of food that is warehoused outside Utah comes mainly from City Markets Inc. in Colorado.

The statistical profile describing food distribution in Region VIII, coupled with the FEMA food distribution guidelines, provide nuclear civil protection planners with a feasible approach for reallocating food supplies under conditions of crisis relocation. This statistical profile can be used to modify the Utah food support annex to include food distribution details which are consistent with regional food distribution patterns.

## WYOMING SUMMARY

The statistical profile of food distribution in Region VIII shows that Wyoming is totally dependent on warehouses outside the state for its food supplies. None of the major distributors currently supplying food to Wyoming residents maintain warehouses within the state boundaries. The two major out-of-state suppliers are Colorado and Montana, warehousing almost 80% of Wyoming's food stocks. Thus interstate coordination will be essential in planning for the distribution of food to Wyoming's residents under crisis relocation conditions. In addition to Colorado and Montana, distributors located in Utah supply 11% of Wyoming's food needs, while distributors in Nebraska (Region VII) account for 8% of the food consumed in Wyoming.

Most of Wyoming's food stocks come from 4 distributors in Colorado, 4 in Montana, and 9 scattered in Utah, Nebraska, Idaho, North and South Dakota.

The statistical profile describing food distribution in Region VIII, coupled with the FEMA food distribution guidelines, provide nuclear civil protection planners with a feasible approach for reallocating food supplies under conditions of crisis relocation. This statistical profile can be used to modify the Wyoming food support annex to include food distribution details which are consistent with regional food distribution patterns.



APPENDIX C  
TOP TEN DISTRIBUTORS

TOP TEN FOOD DISTRIBUTORS  
SERVING REGION 08

DISTRIBUTOR	NUMBER OF WARE- HOUSES	ANNUAL RETAIL SALES (\$1000)	NUMBER OF STORES SERVED	AVERAGE SALES PER STORE
1 SAFEWAY STORES	4	1,253,000	196	6,393
SAFEWAY STORES INC				
DENVER CO		833,500	120	6,946
SALT LAKE CITY UT		248,750	40	6,219
BUTTE MT		160,750	35	4,593
OMAHA NE		10,000	1	10,000
2 FRY'S FOOD STORES	2	772,000	80	9,650
KING SOOPERS INC				
DENVER CO		588,000	53	11,094
CITY MARKETS INC				
GRAND JUNCTION CO		184,000	27	6,815
3 ASSOCIATED FOOD STORES	5	601,500	191	3,149
ASSOCIATED FOOD STORES INC				
SALT LAKE CITY UT		432,500	115	3,761
BILLINGS MT		89,000	38	2,342
HELENA MT		61,500	28	2,196
ASSOCIATED FOOD STORES INC HQ				
SALT LAKE CITY UT		9,500	3	3,167
ASSOCIATED FOOD STORES INC				
POCATELLO ID		9,000	7	1,286
4 SUPER VALU STORES	6	526,750	203	2,595
SUPER VALU STORES INC				
BISMARK ND		156,250	75	2,083
RYAN GROCERY CO				
BILLINGS MT		140,000	60	2,333
SUPER VALU STORES INC				
FARGO ND		104,750	34	3,081
DES MOINES IA		64,250	15	4,283
RYAN MERCANTILE				
GREAT FALLS MT		33,750	11	3,068
SUPER VALU STORES INC				
HOPKINS MN		27,750	8	3,469
5 ASSOCIATED GROCERS OF COLORADO	2	423,500	223	1,899
ASSOCIATED GROCERS OF COLORADO				
DENVER CO		418,250	220	1,901
ALBUQUERQUE NM		5,250	3	1,750
6 WESTERN GROCERS	1	293,000	49	5,980
WESTERN GROCERS				
DENVER CO				

TOP TEN FOOD DISTRIBUTORS  
SERVING REGION 08

DISTRIBUTOR	NUMBER OF WARE- HOUSES	ANNUAL RETAIL SALES (\$1000)	NUMBER OF STORES SERVED	AVERAGE SALES PER STORE
7 JEWEL FOOD STORES BUTTREY FOODS GREAT FALLS MT	1	256,000	34	7,529
8 NASH FINCH NASH-FINCH CO FARGO ND RAPID CITY SD SIOUX FALLS SD MINOT ND ABERDEEN SD PARK GRANT CO HURON SD	6	237,500 62,750 61,750 53,250 44,750 13,500 1,500	110 22 23 29 23 11 2	2,159 2,852 2,685 1,836 1,946 1,227 750
9 SMITHS MANAGEMENT SMITHS MANAGEMENT CORP LAYTON UT	1	226,000	34	6,647
10 ALBERTSON'S ALBERTSONS INC SALT LAKE CITY UT	1	174,000	30	5,800

APPENDIX D

SAMPLE REALLOCATION PLAN  
FOR  
THE THE STATE OF COLORADO

## INTRODUCTION

Nuclear Civil Protection (NCP) Planning encompasses two strategies: in-place protection and crisis relocation. Under the crisis relocation strategy, people from areas threatened by a high risk of nuclear attack will be relocated to hosting areas judged to be safely removed from the hazardous effects of nuclear explosion. The existing food distribution system must then be adjusted and reconfigured to meet the needs of the relocated population.

This plan has been developed to provide a quantitative picture of food distribution networks serving the risk areas and their host counties in Colorado before and after relocation. It discusses the adjustments and strategies entailed in the proposed reallocation plan. In addition, it addresses the problem of transportation stress experienced by major distributors as a result of the reconfiguration of the existing food distribution system.

STATE OF COLORADO  
SUMMARY OF EXISTING FOOD DISTRIBUTION SYSTEM

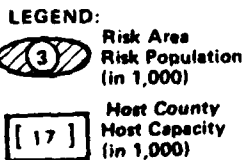
The Colorado Crisis Relocation Plan indicates that about 70% of its residents are scattered among a dozen or so risk counties. Of the risk population, 75% of them live in the Denver-Boulder risk area. Under crisis relocation conditions, over two million Colorado residents will have to relocate to lower-risk host counties within the state. Exhibit 1 illustrates the evacuation pattern of the risk areas in the state of Colorado.

The statistical profile of food distribution in Colorado shows that state residents are largely served by warehouses located within the state boundaries. Approximately 98% of the food currently reaching Colorado residents is warehoused within the state, with 91% of the food stocks coming from warehouses located in Denver alone. The small amount of the food (2%) that comes from out-of-state is scattered among six states (Utah, Arizona, New Mexico, Nebraska, Kansas and Texas).

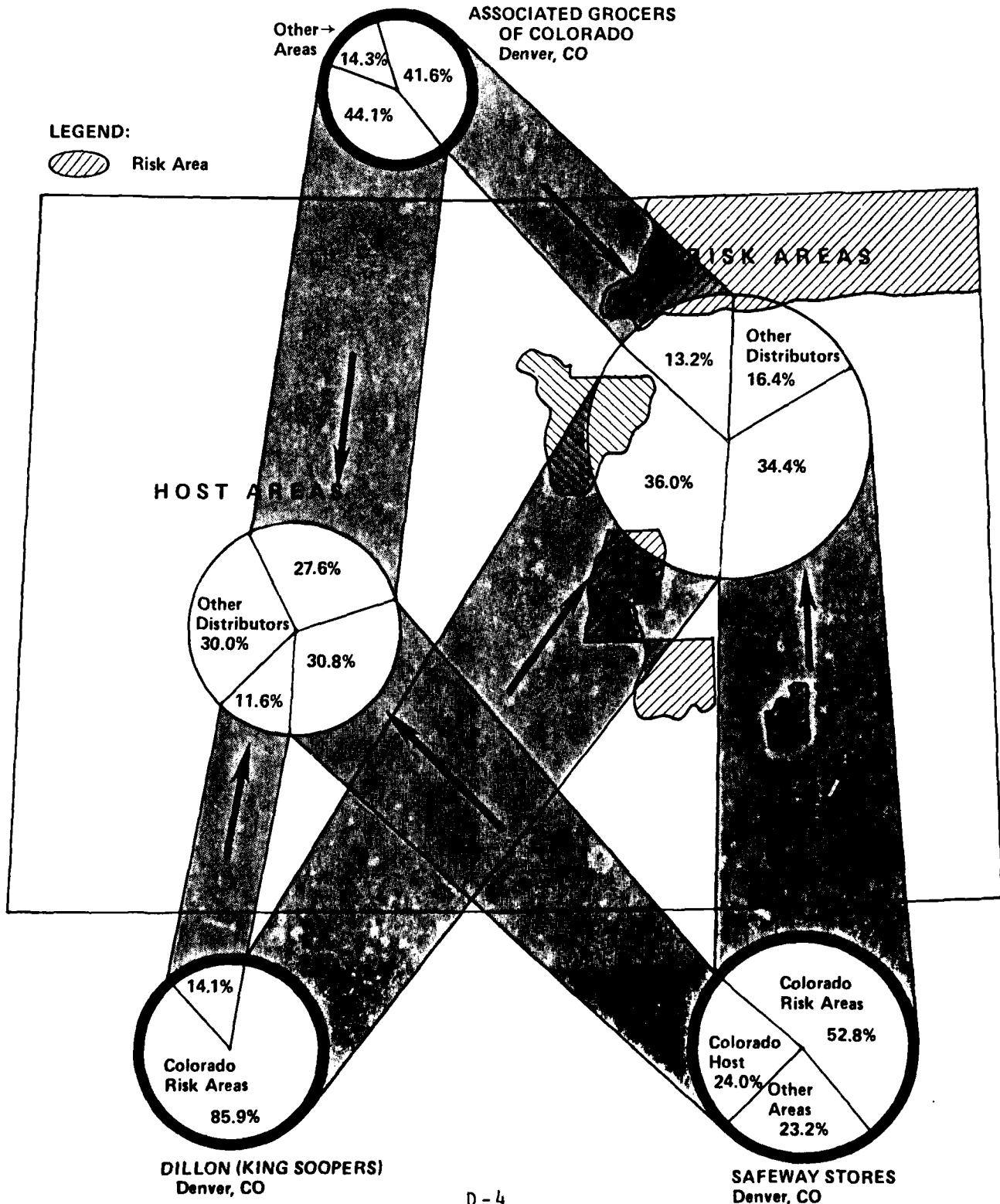
Within the state of Colorado, three major distributors with warehouses in Denver (Safeway, King Soopers, and Associated Grocers of Colorado) account for almost 80% of the food stored for in-state consumption. These three distributors supply roughly 84% of the food consumed in the risk areas, and 70% of the food consumed in the host counties. In addition, two other distributors in Colorado (City Markets and Western Grocers) account for another 15% of the food consumed in the risk areas and 24% of the food consumed in the host counties. The detailed annual sales volume of each distributor serving Colorado is listed by county in Attachment A-1.

Of the three major distributors, Safeway Stores commands one-third of the state's retail food market, while King Soopers and Associated Grocers supply 28% and 18% of the retail food stores respectively. Exhibit 2 details the market share of each of the three major distributors serving Colorado. The geographic area covered by Safeway and Associated Grocers are roughly identical, serving primarily a combination of risk and host counties in Colorado. In addition, 23% of Safeway's and 14% of Associated Grocers' food stocks serve supermarkets in the neighboring states, mainly Wyoming and Nebraska. The entire food stocks of King Soopers' Denver warehouse is for in-state consumption, serving primarily the major metropolitan areas in Colorado.

## EVACUATION PATTERN



**EXHIBIT 2**  
**MAJOR SOURCES OF SUPPLY TO THE STATE OF COLORADO**  
**CURRENT DISTRIBUTION PATTERN**





STATE OF COLORADO  
PROPOSED FOOD DISTRIBUTION SYSTEM ADJUSTMENTS  
FOR CRISIS RELOCATION

The proposed reallocation plan assumes simultaneous evacuation of all the risk areas in Colorado. The chief adjustment in the food distribution system in support of the crisis relocation strategy entails the shift of supplies from risk area retail outlets to host area retail outlets and mass feeding centers. In general, Colorado wholesale warehouses serving the risk population before evacuation will continue to do so after evacuation by shifting deliveries from their risk area stores to their host area stores. The market share of each of the three major distributors serving Colorado under relocation is displayed in Exhibit 3. Food will be delivered to relocatees through a combination of retail outlets and mass feeding centers. Wholesale warehouses with no host-area outlets will supply mass feeding centers directly. King Soopers, which has only one host area outlet (in Larimer County), will distribute its supplies through City Markets' retail outlets in the host counties since both distributors are operated by the same parent company (Dillon Co.), and thus are on the same computerized ordering system. In addition, incoming King Soopers (Dillon) shipments should be directed to City Markets. Detailed reallocation plan for each distributor serving Colorado may be found in Attachment A-2.

Major food processing activities in the risk area will continue operations throughout the evacuation period. Production of critical foodstuffs which are particularly vulnerable to nuclear attack because of their Denver locations (e.g. flour production and fluid milk processing) should be expanded during the relocation period and additional output be stored within the host areas. In addition, stockpiles maintained by USDA/ASCS in the risk areas (e.g. dried milk and grain in Denver) for emergency uses should be moved to host areas.

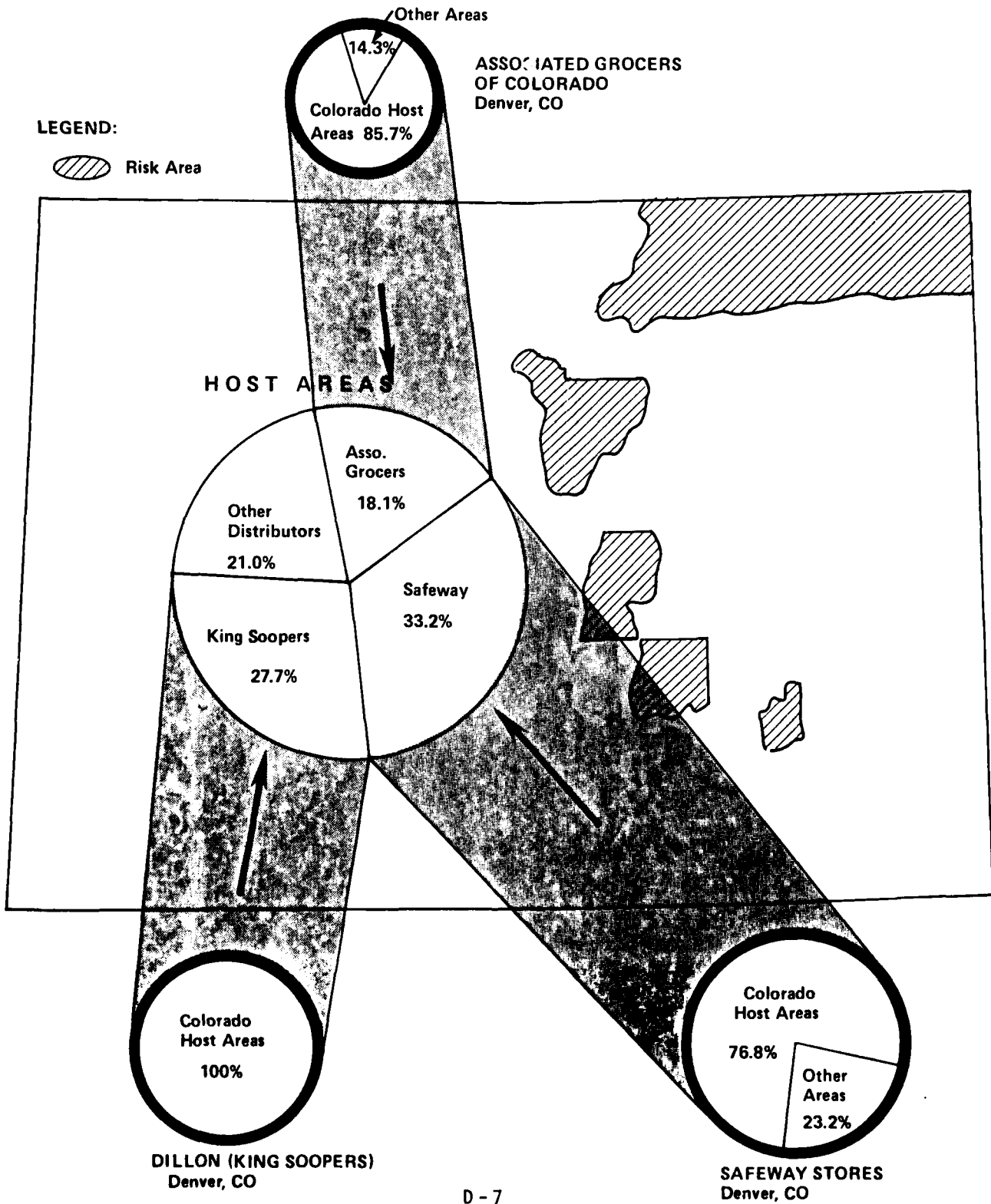
To alleviate the problem of food storage space in the host counties, distributors should consider using a shuttle system in which full trailers are left in the host area as storage depots, emptied, and replaced with another trailer load on the return trip. This mode of operation would alleviate much of the need for additional storage space, but it could also increase the requirement for trailers as much as 100%, depending on the transportation stress level experienced by the individual warehouse. Another modification of the food distribution system would involve redirecting incoming shipments to available warehouse space in the host areas. Emergency warehouse space can be converted from available unused buildings or commandeered from less critical industries in the host areas. NCP planners surveying the host areas should be on the lookout for suitable warehouse space.

Exhibit 4 shows the revised distribution plans for the four major distributors serving the state of Colorado. These plans have been expressed both in terms of a percentage increase in shipments to the distributor's stores in individual counties, and in terms of the estimated increase in tonnage of essential commodities going to each county. Host area residents and evacuees lodged with host area residents, will obtain food through their customary retail outlets. Evacuees lodged in congregate care facilities will obtain food through a combination of mass feeding centers and retail outlets.

Section 3.B.2 tabulates the percentage of truck capacity by weight and volume devoted to the shipment of critical foodstuffs. As an additional planning aid, this information is broken down into case- and pallet-loadings for two truckloads capable of feeding 3,800 citizens (See Attachment B). Suggested shipping guidelines on essential foodstuffs for wholesalers serving the host area retail outlets may be found in Section 3.B.1.

Although the total post-relocation demand for food in each county can be estimated in advance, the exact split between mass feeding centers and retail outlets will not be known until the relocation is accomplished. Mass feeding centers should receive high planning priorities in host counties where the hosting capacities call for an increase of 500% or more shipments into their local retail outlets. The demand for food in Fremont, La Plata, Las Animas, Bent, Baca, Delta, Elbert, Jefferson, Rio Blanco, Montrose, Montezuma and several other host counties is likely to exceed the capacity of the local retail outlets. The outlets of Safeway, King Soopers, Associated Grocers and Western Grocers will experience demand increases in excess of 500% in the absence of any mass feeding centers. Hence the establishment of mass feeding centers should be an integral part of the planning process in those host counties.

**EXHIBIT 3**  
**MAJOR SOURCES OF SUPPLY TO THE STATE OF COLORADO**  
**POST-RELOCATION PATTERN**



# EXHIBIT 4

## REALLOCATION PLAN FOR ASSOCIATED GROCERS OF COLORADO'S DENVER (CO) WAREHOUSE TO THE STATE OF COLORADO

1. Cease shipments to all risk area supermarkets.
2. Redirect food shipments to host area counties as follows:

<u>County, State</u>	<u>Recommended Level* (% of Current Ship -ment, Essential Goods Only)</u>	<u>Estimated Additional Shipments++ (1,000#/week)</u>
Archuleta, CO	266%	136.0
Conejos, CO	312%	217.6
Costilla, CO	444%	141.0
Crowley, CO	1220%	229.5
Custer, CO	371%	55.5
Douglas, CO	428%	386.2
Elbert, CO	290%	38.9
Garfield, CO	332%	363.7
Grand, CO	409%	442.6
Jackson, CO	761%	135.5
Kiowa, CO	771%	127.5
Larimer, CO	183%	642.3
Lincoln, CO	638%	330.5
Mesa, CO	193%	266.0
Ouray, CO	390%	119.0
Prowers, CO	324%	351.6
Saguache, CO	254%	94.5
San Miguel, CO	288%	154.0
Teller, CO	580%	491.6
Washington, CO	388%	236.0
Yuma, CO	235%	110.3
Other+	100%	0.0

### TRANSPORTATION STRESS:

Imposed by Colorado Evacuees only: 1.4

Estimated overall total for entire warehouse: 1.3

Implications : No increase in drivers or equipment is required. By utilizing the transportation equipment to capacity, it is estimated that up to 30% of the existing trailers could be spotted for on-site storage in the host area. If more trailers are to be used for storage, it is estimated that one extra trailer will be needed for each additional trailer used in this manner.

+ Other Host Counties Served Include:

Bent, Boulder, Delta, Eagle, Jefferson, Kit Carson, Lake,  
Montrose, Pitkin, Routt, Summit, Chaffee, El Paso, Fremont,  
La Plata, Rio Grande, Alamosa, Huerfano, Las Animas, Pueblo  
and Weld Counties.

\* Shipments in excess of 500% will go to Mass Feeding Centers  
of individual host counties.

++ Edible Weight

REALLOCATION PLAN FOR SAFEWAY STORES' DENVER (CO) WAREHOUSE  
TO THE STATE OF COLORADO

1. Cease shipments to all risk area supermarkets.
2. Redirect food shipments to host area counties as follows:

<u>County, State</u>	<u>Recommended Level* (% of Current Ship- ment, Essential Goods Only)</u>	<u>Estimated Additional Shipments++ (1,000#/week)</u>
Alamosa, CO	132%	86.3
Baca, CO	MFC	370.0
Bent, CO	1115%	416.1
Boulder, CO	106%	27.9
Chaffee, CO	271%	468.5
Clear Creek, CO	1137%	425.0
Eagle, CO	499%	544.3
Garfield, CO	500%	764.9
Gunnison, CO	853%	617.5
Huerfano, CO	210%	210.3
Kit Carson, CO	451%	287.7
Lake, CO	323%	426.8
Larimer, CO	500%	3387.3
Mesa, CO	500%	2021.4
Moffat, CO	428%	627.6
Montezuma, CO	186%	117.9
Morgan, CO	110%	24.8
Otero, CO	479%	252.4
Prowers, CO	500%	327.8
Pueblo, CO	207%	63.9
Rio Grande, CO	417%	432.5
Routt, CO	240%	571.8
Summit, CO	136%	97.2
Weld, CO	236%	370.1
Yuma, CO	500%	163.9
Other+	100%	0.0

TRANSPORTATION STRESS:

Imposed by Colorado Evacuees only: 2.2

Estimated overall total for entire warehouse: 1.6

Implications : No increase in drivers or equipment is required. By utilizing the transportation equipment to capacity, it is estimated that up to 10% of the existing trailers could be spotted for on-site storage in the host area. If more trailers are to be used for storage, it is estimated that one extra trailer will be needed for each additional trailer used in this manner.

+ Other Host Counties Served Include:

El Paso, Fremont, La Plata, Jefferson, and Montrose Counties.

MFC Mass Feeding Centers

\* Shipments in excess of 500% will go to Mass Feeding Centers of individual host counties.

++ Edible Weight

REALLOCATION PLAN FOR KING SOOPERS' DENVER (CO) WAREHOUSE  
TO THE STATE OF COLORADO

1. Cease shipments to all risk area supermarkets.
2. Redirect food shipments to host area counties as follows:

<u>County, State</u>	<u>Recommended Level* (% of Current Ship- ment, Essential Goods Only)</u>	<u>Estimated Additional Shipments++ (1,000#/week)</u>
Boulder, CO	500%	2520.0
Cheyenne, CO	MFC	98.0
Delta, CO	CMO	1257.6
Elbert, CO	MFC	191.2
El Paso, CO	500%	481.0
Fremont, CO	CMO	1312.3
Gilpin, CO	MFC	156.0
Jefferson, CO	344%	689.6
La Animas, CO	MFC	819.6
La Plata, CO	CMO	1152.8
Larimer, CO	500%	4042.9
Mineral, CO	MFC	22.0
Montezuma, CO	CMO	850.3
Pueblo, CO	500%	209.5
Other+	100%	0.0

TRANSPORTATION STRESS:

Estimated overall total for entire warehouse: 3.4

Implications : 125% increase in drivers (app. 76 additional drivers) and 60% increase in equipment (38 additional tractors and 144 trailers) is required. If trailers are to be used for on-site storage in the host area, it is estimated that one extra trailer will be needed for each trailer employed for storage.

MFC Mass Feeding Centers

CMO Incoming King Soopers' (Dillon) shipments should be directed to City Markets' Outlets.



\* Shipments in excess of 500% will go to Mass Feeding Centers of individual host counties.

+ Other Host Counties Served Include:

Fremont, La Plata, Mineral, La Animas, Cheyenne, Delta, Elbert, Gilpin, Montezuma and Weld Counties.

++ Edible Weight

REALLOCATION PLAN FOR WESTERN GROCERS' DENVER (CO) WAREHOUSE  
TO THE STATE OF COLORADO

1. Cease shipments to all risk area supermarkets.
2. Redirect food shipments to host area counties as follows:

<u>County, State</u>	<u>Recommended Level (% of Current Ship- ment, Essential Goods Only)</u>	<u>Estimated Additional Shipments+ (1,000#/week)</u>
Boulder, CO	500%	675.1
Dolores, Co	MFC	106.0
Elbert, CO	MFC	323.4
El Paso, CO	284%	158.4
Jefferson, CO	100%	0.0
Larimer, CO	500%	1092.7
Mesa, CO	500%	546.3
Montrose, CO	MFC	1497.0
Park, CO	MFC	240.0
Pitkin, CO	476%	513.2
Pueblo, CO	500%	14.3
Rio Blanco, CO	MFC	380.1
San Juan, CO	MFC	50.0
Weld, CO	100%	0.0

TRANSPORTATION STRESS:

Imposed by Colorado Evacuees only: 3.2

Estimated overall total for entire warehouse: 1.5

Implications : No increase in drivers or equipment is required. By utilizing the transportation equipment to capacity, it is estimated that up to 20% of the existing trailers could be spotted for on-site storage in the host area. If more trailers are to be used for storage, it is estimated that one extra trailer will be needed for each additional trailer used in this manner.

+ Edible Weight

MFC Mass Feeding Centers

## STATE OF COLORADO TRANSPORTATION STRESS

To explore quantitatively the extent of the strain placed on the local delivery system of a warehouse as a result of crisis relocation, a transportation stress factor (defined as the ratio of post-evacuation ton-miles to pre-evacuation ton-miles) is estimated for the four major Denver distributors serving the state of Colorado. From the standpoint of the risk areas in Colorado, the transportation stress factor can be considered to have two components:

- (1) Additional mileage imposed by the movement of risk area residents away from their normal source of supply.
- (2) Mileage requirements imposed by the continued operation of the remaining distribution network, some of which will be reconfigured in response to other risk area movements.

The transportation stress imposed by the relocation of all the risk area residents in Colorado ranges from a low of 1.4 for Associated Grocers to a high of 3.4 for King Soopers. Safeway Stores and Western Grocers would experience a stress factor of 2.2 and 3.2 respectively for their Colorado operations. The stress factors do not accurately reflect the transportation stress levels experienced by Safeway, Western and Associated Grocers since they do not represent their entire distribution volume. Close to 40% of Western Grocers', a quarter of Safeway's and 14% of Associated Grocers' food stocks go to supermarkets outside the state boundaries. These out-of-state shipments (mainly to Wyoming, Nebraska, New Mexico, Kansas and South Dakota) are not significantly affected by crisis relocation. The relative stability of these long distance shipments will, to some extent, serve to offset the effects of massive population movement out of the risk areas in Colorado. In order to accurately assess the consequences of crisis relocation on a particular warehouse, the transportation stress factor must be computed for the entire geographic area served by the warehouse.

Although the detailed evaluation of out-of-state risk area conglomerates served by Safeway, Western and Associated Grocers was beyond the scope of the current study, it is possible to develop a rough estimate of transportation stress for the remainder of each distributor's service area by using approximation techniques developed in earlier SYSTAN work (Food System Support of the Relocation Strategy, September, 1975). Using this technique, the total transportation stress for the three major Denver distributors can be estimated. This stress ranges from 1.3 for Associated Grocers' to 1.6 for Safeway's Denver warehouses. Western Grocers would experience a stress

factor of 1.5. Since research has shown that existing transportation equipment is not generally used to capacity, driver and vehicle productivity can be increased by relaxing regulatory constraints (e.g. relaxing driver restrictions and weight limitations) and improving utilization of existing equipment (e.g. shipping only full-pallet loads; eliminating slack in current vehicle schedule; relaxing maintenance requirements; shipping only essential items; and eliminating light loads). By implementing these productivity improvements, it is estimated that no increase in drivers or equipment is required for Safeway, Western Grocers and Associated Grocers' Denver operations. In the case of King Soopers' Denver warehouse, which service in-state supermarkets only, the transportation stress imposed by the relocation of all the risk areas in Colorado cannot then be offset by the relatively more stable, longer distance out-of-state shipments. With a stress level of 3.4, King Soopers would require an increase of 125% in drivers and 60% in equipment to meet the demands of relocation. However, transportation managers expressed reservation regarding the use of their 'flat land' equipment in the mountainous host counties. Whenever possible, rail shipments should be incorporated into host area delivery plan. The Denver and Rio Grande Western Railroad has a line between Denver and Grand Junction that could be used effectively to take box-cars of food directly to the host area or to piggy-back truck shipments. The use of rail transport would alleviate some of the need for additional drivers and equipment from King Soopers' Denver warehouse.

Whenever trailers are shuttled and used for host area storage, it is estimated that one additional trailer will be needed for each trailer employed for storage if the transportation stress level experienced by the warehouse exceeds 1.8. As the stress level falls below 1.8, some existing trailers may become available for host area storage. The number of trailers which can be used in this fashion increases as the stress level drops. At a stress level of 1.0, it is estimated that as much as 50% of the existing trailer fleet could be used for on-site storage in the host areas.

# ATTACHMENT A-1

STATE OF COLORADO  
EXISTING SUPERMARKET SALES (\$1,000/YEAR)

DISTRIBUTOR LOCATION	COLORADO RISK AREAS <sup>1</sup>	C O U N T I E S										TOTAL
		BOULDER <sup>2</sup>	DELTA	FREMONT	GARFIELD	LA PLATA	LARIMER	MESA	MONTROSE	OTHER <sup>3</sup>		
American Strevel Grand Junction, CO	0	0	0	0	0	0	0	750	750	3000	4500	
Asso. Food Stores Salt Lake City, UT	0	0	0	0	0	0	0	0	0	1500	1500	
Asso. Grocers Phoenix, AZ	4564	0	0	0	0	0	0	0	0	436	5000	
Asso. Groc. of Colorado Albuquerque, NM	452	0	0	0	0	4500	0	0	0	298	5250	
Asso. Groc. of Colorado Denver, CO	185967	7331	9000	6750	5750	3000	28250	10500	5250	121202	383000	
Asso. Groc. of Nebraska Gering, NE	2403	0	0	0	0	0	750	0	0	5097	8250	
Boogaart Supply Concordia, KS	0	0	0	0	0	0	0	0	0	1500	1500	
City Markets Grand Junction, CO	0	0	5000	7000	10000	17000	0	32000	10000	56000	137000	
Fleming Co. Topeka, KS	0	0	0	0	0	0	0	0	0	3750	3750	
Fleming Co. Wichita, KS	0	0	0	0	0	0	0	0	0	11000	11000	
Friendly Markets Inc. Arvada, CO	14317	0	0	0	0	0	0	0	0	683	15000	
H W B Grocery Dalhart, TX	0	0	0	0	0	0	0	0	0	1500	1500	
King Soopers Denver, CO	505285	23063	0	0	0	0	37000	0	0	22652	588000	
McLane Co. Denver, CO	685	0	0	1500	0	0	0	0	0	65	2250	
Safeway Stores Denver, CO	483958	15815	0	10000	7000	3000	31000	18500	3000	131227	703500	
United A C Stores Omaha, NE	0	0	0	0	0	0	0	0	0	3000	3000	
Western Grocers Denver, CO	207782	6178	0	0	0	0	10000	5000	0	16040	245000	
TOTAL	1405413	52387	14000	25250	22750	27500	107000	66750	19000	378950	2119000	

<sup>1</sup> Include risk areas in Adams, Arapahoe, Denver, Logan, Phillips, Sedgwick, Boulder, Jefferson, Douglas, El Paso, Morgan, Otero, Pueblo and Weld counties.

<sup>2</sup> Partly risk and partly host

<sup>3</sup> Other host counties in Colorado with hosting capacity less than 50,000.

# ATTACHMENT A-2

STATE OF COLORADO  
POST-RELOCATION SUPERMARKET SALES (\$1,000/YEAR)

DISTRIBUTOR LOCATION	COLORADO RISK AREAS <sup>1</sup>	H O S T C O U N T I E S										TOTAL
		BOULDER <sup>2</sup>	DELTA	FREMONT	GARFIELD	LA PLATA	LARIMER	MESA	MONTROSE	OTHER <sup>3</sup>		
American Strevell Grand Junction, CO	0	0	0	0	0	0	0	750	750	3000	4500	
Asso. Food Stores Salt Lake City, UT	0	0	0	0	0	0	0	0	0	1500	1500	
Asso. Grocers Phoenix, AZ	0	0	0	0	0	0	0	0	0	5000	5000	
Asso. Groc. of Colorado Albuquerque, NM	0	0	0	0	0	4500	0	0	0	750	5250	
Asso. Groc. of Colorado Denver, CO	0	7331	9000	6750	19063	3000	51764	20239	5250	260603	383000	
Asso. Groc. of Nebraska Gering, NE	0	0	0	0	0	0	750	0	0	7500	8250	
Boogaart Supply Concordia, KS	0	0	0	0	0	0	0	0	0	1500	1500	
City Markets Grand Junction, CO	0	0	5000	7000	10000	17000	0	32000	10000	56000	137000	
Fleming Co. Topeka, KS	0	0	0	0	0	0	0	0	0	3750	3750	
Fleming Co. Wichita, KS	0	0	0	0	0	0	0	0	0	11000	11000	
Friendly Markets Inc. Arvada, CO	0	0	0	0	0	0	0	0	0	15000	15000	
H W B Grocery Dalhart, TX	0	0	0	0	0	0	0	0	0	1500	1500	
King Soopers Denver, CO	0	115315	46037	48039	0	42201	185000	0	0	151408	588000	
McLane Co. Denver, CO	0	0	0	1500	0	0	0	0	0	750	2250	
Safeway Stores Denver, CO	0	16836	0	10000	35000	3000	155000	92500	3000	388164	703500	
United A G Stores Omaha, NE	0	0	0	0	0	0	0	0	0	3000	3000	
Western Grocers Denver, CO	0	30890	0	0	0	0	50000	25000	54800	84310	245000	
TOTAL	0	170372	60037	73289	64063	69701	442514	170489	73800	994735	2119000	

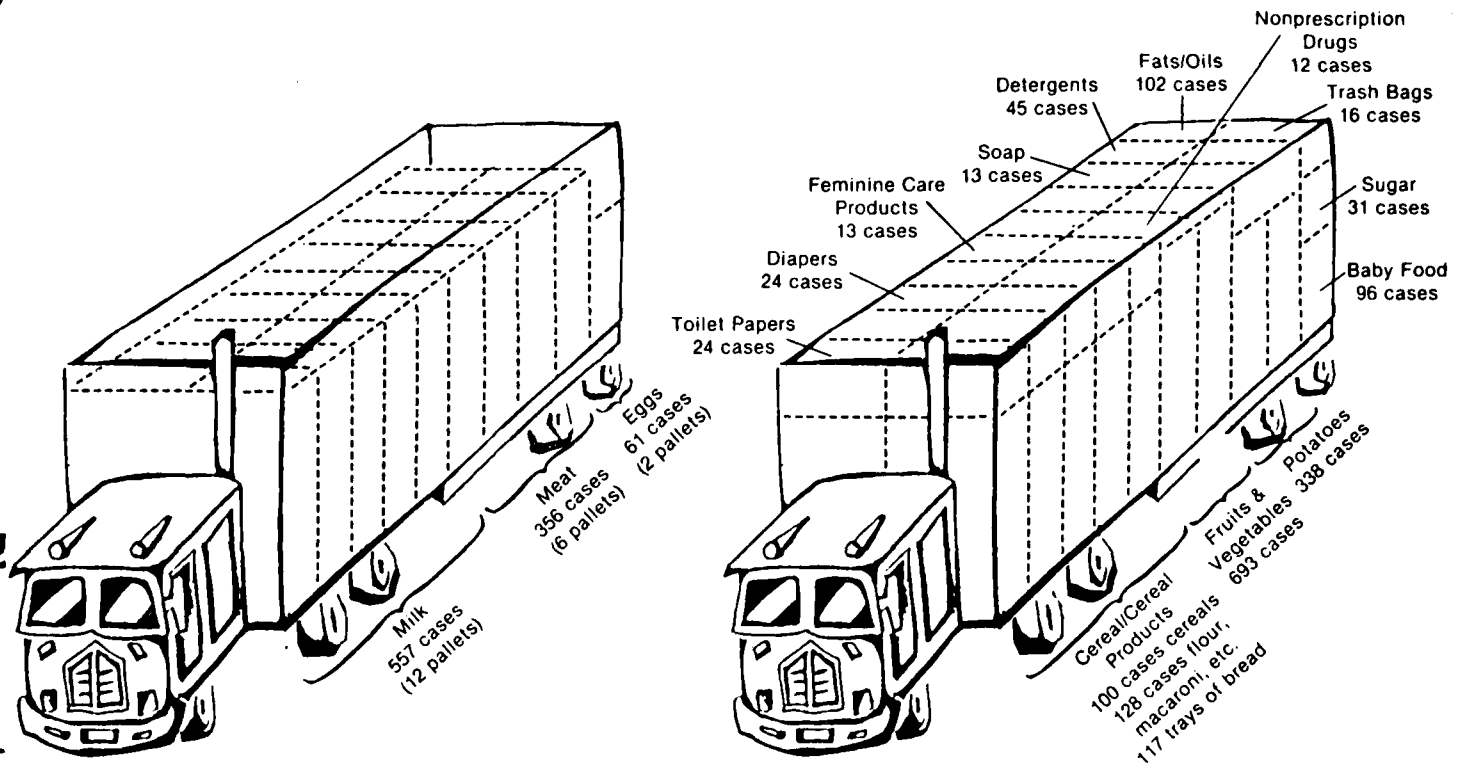
<sup>1</sup> Include risk areas in Adams, Arapahoe, Denver, Logan, Phillips, Sedwick, Boulder, Jefferson, Douglas, El Paso, Morgan, Otero, Pueblo and Weld counties.

<sup>2</sup> Partly risk and partly host

<sup>3</sup> Shipments from King Soopers' Dallas warehouse will use City Markets' retail outlets in the host counties.

<sup>3</sup> Other host counties in Colorado with hosting capacity less than 50,000.

## ATTACHMENT B



### TWO TRUCKLOADS CAPABLE OF SUSTAINING 3800 PEOPLE FOR ONE WEEK

FOOD (refrigerated transport)		FOOD (non-refrigerated transport)		NON-FOOD	
Milk	557 cases	Cereals	345 cases	Paper Products	64 cases
Meat	356 cases	Fruits & Vegetables	693 cases	Hygiene Items	71 cases
Eggs	61 cases	Potatoes	338 cases	Aspirin	12 cases
		Fats & Oils	102 cases		
		Sugar	31 cases		
		Baby Food	96 cases		

APPENDIX E  
COUNTY LISTINGS



## COUNTY SUPPLIERS

REGION 08  
STATE: CO

TOTAL STORES	500K- 1 MIL	1-2 MIL	2-4 MIL	4-8 MIL	8+ MIL	EST ACV (\$1000)
-----------------	----------------	------------	------------	------------	-----------	---------------------

## ADAMS

ASSOCIATED GROCERS OF COLORADO	DENVER CO	14	3	4	6	1	0	31,250
FRIENDLY MARKETS INC	ARVADA CO	1	0	0	1	0	0	3,000
KING SOOPERS INC	DENVER CO	9	0	0	0	4	5	26,000
MILITARY	BUY DIRECT	2	0	0	0	0	2	25,000
SAFEMAY STORES INC	DENVER CO	15	0	0	2	7	6	122,000
WESTERN GROCERS	DENVER CO	8	0	0	1	6	1	56,000
SMALL SUPPLIERS		1	0	1	0	0	0	1,500
COUNTY TOTAL:		50	3	5	10	18	14	324,750

## ALAMOSA

ASSOCIATED GROCERS OF COLORADO	DENVER CO	3	1	1	1	0	0	5,250
CITY MARKETS INC	GRAND JUNCTION CO	1	0	0	0	0	1	10,000
SAFEMAY STORES INC	DENVER CO	1	0	0	0	0	1	10,000
COUNTY TOTAL:		5	1	1	1	0	2	25,250

## ARAPAHOE

ASSOCIATED GROCERS OF COLORADO	DENVER CO	3	3	0	0	0	0	2,250
ASSOCIATED GROCERS OF NEBRASKA	GERING NE	1	1	0	0	0	0	750
FRIENDLY MARKETS INC	ARVADA CO	2	0	0	2	0	0	6,000
KING SOOPERS INC	DENVER CO	13	0	0	0	5	8	138,000
SAFEMAY STORES INC	DENVER CO	12	0	0	4	4	4	82,000
WESTERN GROCERS	DENVER CO	2	0	0	0	0	2	30,000
COUNTY TOTAL:		33	4	0	6	9	14	259,000

## ARCHULETA

ASSOCIATED GROCERS OF COLORADO	DENVER CO	1	0	0	1	0	0	3,000
COUNTY TOTAL:		1	0	0	1	0	0	3,000

## BACA

FLEMING CO INC	WICHITA KS	1	0	1	0	0	0	1,500
H W B GROCERY CO	DALHART TX	1	0	1	0	0	0	1,500
COUNTY TOTAL:		2	0	2	0	0	0	3,000

## BENT

ASSOCIATED GROCERS OF COLORADO	DENVER CO	1	0	1	0	0	0	1,500
SAFEMAY STORES INC	DENVER CO	1	0	1	0	0	0	1,500
COUNTY TOTAL:		2	0	2	0	0	0	3,000

## BOULDER

ASSOCIATED GROCERS OF COLORADO	DENVER CO	8	3	2	1	2	0	22,250
KING SOOPERS INC	DENVER CO	5	0	0	0	0	5	70,000
SAFEMAY STORES INC	DENVER CO	6	0	0	1	2	3	48,000
WESTERN GROCERS	DENVER CO	5	1	0	2	2	0	18,750
COUNTY TOTAL:		24	4	2	4	6	8	159,000

## CHAFFEE

ASSOCIATED GROCERS OF COLORADO	DENVER CO	5	1	4	0	0	0	6,750
SAFEMAY STORES INC	DENVER CO	1	0	0	0	0	1	10,000
COUNTY TOTAL:		6	1	4	0	0	1	16,750

## CHEYENNE

FLEMING CO INC	TOPEKA KS	2	0	2	0	0	0	3,000
COUNTY TOTAL:		2	0	2	0	0	0	3,000

## CLEAR CREEK

SAFEMAY STORES INC	DENVER CO	1	0	1	0	0	0	1,500
COUNTY TOTAL:		1	0	1	0	0	0	1,500

## CONELIOS

ASSOCIATED GROCERS OF COLORADO	DENVER CO	3	1	2	0	0	0	3,750
COUNTY TOTAL:		3	1	2	0	0	0	3,750

COUNTY SUPPLIERS		TOTAL STORES	500K- 1 MIL	1-2 MIL	2-4 MIL	4-8 MIL	8+ MIL	EST ACV (\$1000)
REGION 03, STATE CO (CONTINUED)								
COSTILLA								
ASSOCIATED GROCERS OF COLORADO	DENVER CO	2	2	0	0	0	0	1,500
COUNTY TOTAL:		2	2	0	0	0	0	1,500
CROWLEY								
ASSOCIATED GROCERS OF COLORADO	DENVER CO	1	1	0	0	0	0	750
SMALL SUPPLIERS		1	1	0	0	0	0	750
COUNTY TOTAL:		2	2	0	0	0	0	1,500
CUSTER								
ASSOCIATED GROCERS OF COLORADO	DENVER CO	1	1	0	0	0	0	750
COUNTY TOTAL:		1	1	0	0	0	0	750
DELTA								
ASSOCIATED GROCERS OF COLORADO	DENVER CO	8	6	1	1	0	0	9,000
CITY MARKETS INC	GRAND JUNCTION CO	1	0	0	0	1	0	5,000
SMALL SUPPLIERS		1	0	0	1	0	0	3,000
COUNTY TOTAL:		10	6	1	2	1	0	17,000
DENVER								
ASSOCIATED GROCERS OF COLORADO	DENVER CO	20	14	3	3	0	0	24,000
KING SOOPERS INC	DENVER CO	5	0	0	0	0	5	60,000
SAFEMAY STORES INC	DENVER CO	11	0	0	3	5	3	73,000
WESTERN GROCERS	DENVER CO	6	0	1	3	1	1	30,500
SMALL SUPPLIERS		1	0	0	1	0	0	3,000
COUNTY TOTAL:		43	14	4	10	6	9	190,500
DOUGLAS								
ASSOCIATED GROCERS OF COLORADO	DENVER CO	2	0	0	2	0	0	6,000
COUNTY TOTAL:		2	0	0	2	0	0	6,000
EAGLE								
ASSOCIATED GROCERS OF COLORADO	DENVER CO	3	2	1	0	0	0	3,000
CITY MARKETS INC	GRAND JUNCTION CO	2	0	0	1	1	0	10,000
SAFEMAY STORES INC	DENVER CO	1	0	0	0	1	0	5,000
COUNTY TOTAL:		6	2	1	1	2	0	18,000
EL PASO								
ASSOCIATED GROCERS OF COLORADO	DENVER CO	8	2	3	3	0	0	15,000
KING SOOPERS INC	DENVER CO	6	0	0	0	2	4	69,000
MILITARY	BUY DIRECT	2	0	0	0	0	2	30,000
SAFEMAY STORES INC	DENVER CO	7	0	0	1	6	0	39,000
WESTERN GROCERS	DENVER CO	8	0	1	2	3	2	49,500
COUNTY TOTAL:		31	2	4	6	11	8	202,500
ELBERT								
ASSOCIATED GROCERS OF COLORADO	DENVER CO	1	1	0	0	0	0	750
COUNTY TOTAL:		1	1	0	0	0	0	750
FREMONT								
ASSOCIATED GROCERS OF COLORADO	DENVER CO	4	1	2	1	0	0	6,750
CITY MARKETS INC	GRAND JUNCTION CO	1	0	0	0	1	0	7,000
MC LAKE CO INC	DENVER CO	1	0	1	0	0	0	1,500
SAFEMAY STORES INC	DENVER CO	1	0	0	0	0	1	10,000
COUNTY TOTAL:		7	1	3	1	1	1	25,250
GARFIELD								
ASSOCIATED GROCERS OF COLORADO	DENVER CO	2	1	0	0	1	0	5,750
CITY MARKETS INC	GRAND JUNCTION CO	2	0	0	1	1	0	10,000
SAFEMAY STORES INC	DENVER CO	1	0	0	0	1	0	7,000
COUNTY TOTAL:		5	1	0	1	3	0	22,750
GRAND								
ASSOCIATED GROCERS OF COLORADO	DENVER CO	5	3	2	0	0	0	5,250
SMALL SUPPLIERS		1	0	1	0	0	0	1,500
COUNTY TOTAL:		6	3	3	0	0	0	6,750

COUNTY SUPPLIERS		TOTAL STORES	500K- 1 MIL	1-2 MIL	2-4 MIL	4-8 MIL	8+ MIL	EST ACV (\$1000)
REGION 06, STATE CO (CONTINUED)								
GUNNISON								
CITY MARKETS INC	GRAND JUNCTION CO	1	0	0	0	1	0	5,000
SAFEWAY STORES INC	DENVER CO	1	0	0	1	0	0	3,000
COUNTY TOTAL:		2	0	0	1	1	0	8,000
HINSDALE								
AMERICAN STREVELL CO	GRAND JUNCTION CO	1	0	1	0	0	0	1,500
COUNTY TOTAL:		1	0	1	0	0	0	1,500
HUEPFANO								
ASSOCIATED GROCERS OF COLORADO	DENVER CO	1	1	0	0	0	0	750
SAFEWAY STORES INC	DENVER CO	1	0	0	0	1	0	7,000
COUNTY TOTAL:		2	1	0	0	1	0	7,750
JACKSON								
ASSOCIATED GROCERS OF COLORADO	DENVER CO	1	1	0	0	0	0	750
COUNTY TOTAL:		1	1	0	0	0	0	750
JEFFERSON								
ASSOCIATED GROCERS OF COLORADO	DENVER CO	7	4	0	2	1	0	14,000
FRIENDLY MARKETS INC	ARVADA CO	2	0	0	2	0	0	6,000
KING SOOPERS INC	DENVER CO	9	0	0	0	4	5	91,000
SAFEWAY STORES INC	DENVER CO	10	0	0	1	3	6	90,000
WESTERN GROCERS	DENVER CO	4	0	0	1	2	1	27,000
COUNTY TOTAL:		32	4	0	6	10	12	228,000
KIOHA								
ASSOCIATED GROCERS OF COLORADO	DENVER CO	1	1	0	0	0	0	750
COUNTY TOTAL:		1	1	0	0	0	0	750
KIT CARSON								
ASSOCIATED GROCERS OF COLORADO	DENVER CO	2	2	0	0	0	0	1,500
BOCGAART SUPPLY CO	CONCORDIA KS	1	0	1	0	0	0	1,500
FLEMING CO INC	TOPEKA KS	2	1	0	1	0	0	3,750
MILITARY	BUY DIRECT	1	0	0	0	0	1	10,000
SAFEWAY STORES INC	DENVER CO	1	0	0	1	0	0	3,000
COUNTY TOTAL:		7	3	1	2	0	1	19,750
LA PLATA								
ASSOCIATED GROCERS OF COLORADO	ALBUQUERQUE NM	2	0	1	1	0	0	4,500
ASSOCIATED GROCERS OF COLORADO	DENVER CO	1	0	0	1	0	0	3,000
CITY MARKETS INC	GRAND JUNCTION CO	2	0	0	0	1	1	17,000
SAFEWAY STORES INC	DENVER CO	1	0	0	1	0	0	3,000
COUNTY TOTAL:		6	0	1	3	1	1	27,500
LAKE								
ASSOCIATED GROCERS OF COLORADO	DENVER CO	1	0	0	1	0	0	3,000
SAFEWAY STORES INC	DENVER CO	1	0	0	0	1	0	7,000
SMALL SUPPLIERS		3	0	0	3	0	0	9,000
COUNTY TOTAL:		5	0	0	4	1	0	19,000
LAPINER								
ASSOCIATED GROCERS OF COLOPADO	DENVER CO	11	5	3	1	1	1	28,250
ASSOCIATED GROCERS OF NEBRASKA	GERING NE	1	1	0	0	0	0	750
KING SOOPERS INC	DENVER CO	3	0	0	0	1	2	37,000
SAFEWAY STORES INC	DENVER CO	4	0	0	0	3	1	31,000
WESTERN GROCERS	DENVER CO	2	0	0	1	1	0	10,000
COUNTY TOTAL:		21	6	3	2	6	4	107,000
LAS ANIMAS								
ASSOCIATED GROCERS OF COLORADO	DENVER CO	5	3	1	1	0	0	6,750
COUNTY TOTAL:		5	3	1	1	0	0	6,750

COUNTY SUPPLIERS		TOTAL STORES	500K- 1 MIL	1-2 MIL	2-4 MIL	4-8 MIL	8+ MIL	EST ACV (\$1000)
REGION 03, STATE CO (CONTINUED)								
LINCOLN								
ASSOCIATED GROCERS OF COLORADO	DENVER CO	2	1	1	0	0	0	2,250
COUNTY TOTAL:		2	1	1	0	0	0	2,250
LOGAN								
ASSOCIATED GROCERS OF COLORADO	DENVER CO	5	3	0	0	2	0	16,250
SAFEMAY STORES INC	DENVER CO	1	0	0	0	0	1	15,000
SMALL SUPPLIERS		1	0	1	0	0	0	1,500
COUNTY TOTAL:		7	3	1	0	2	1	32,750
MESA								
AMERICAN STREVELL CO	GRAND JUNCTION CO	1	1	0	0	0	0	750
ASSOCIATED GROCERS OF COLORADO	DENVER CO	5	0	3	2	0	0	10,500
CITY MARKETS INC	GRAND JUNCTION CO	6	0	0	0	6	0	32,000
SAFEMAY STORES INC	DENVER CO	4	0	1	0	3	0	18,500
WESTERN GROCERS	DENVER CO	1	0	0	0	1	0	5,000
COUNTY TOTAL:		17	1	4	2	10	0	66,750
MOFFAT								
CITY MARKETS INC	GRAND JUNCTION CO	1	0	0	0	1	0	7,000
SAFEMAY STORES INC	DENVER CO	1	0	0	0	1	0	7,000
COUNTY TOTAL:		2	0	0	0	2	0	14,000
MONTEZUMA								
CITY MARKETS INC	GRAND JUNCTION CO	1	0	0	0	1	0	7,000
SAFEMAY STORES INC	DENVER CO	1	0	0	0	1	0	5,000
COUNTY TOTAL:		2	0	0	0	2	0	12,000
MONTROSE								
AMERICAN STREVELL CO	GRAND JUNCTION CO	1	1	0	0	0	0	750
ASSOCIATED GROCERS OF COLORADO	DENVER CO	3	1	1	1	0	0	5,250
CITY MARKETS INC	GRAND JUNCTION CO	1	0	0	0	0	1	10,000
SAFEMAY STORES INC	DENVER CO	1	0	0	1	0	0	3,000
COUNTY TOTAL:		6	2	1	2	0	1	19,000
MORGAN								
ASSOCIATED GROCERS OF COLORADO	DENVER CO	7	1	5	1	0	0	11,250
SAFEMAY STORES INC	DENVER CO	1	0	0	0	0	1	10,000
COUNTY TOTAL:		8	1	5	1	0	1	21,250
OTERO								
ASSOCIATED GROCERS OF COLORADO	DENVER CO	5	0	2	3	0	0	12,000
SAFEMAY STORES INC	DENVER CO	2	0	0	2	0	0	6,000
COUNTY TOTAL:		7	0	2	5	0	0	18,000
OURAY								
ASSOCIATED GROCERS OF COLORADO	DENVER CO	2	2	0	0	0	0	1,500
COUNTY TOTAL:		2	2	0	0	0	0	1,500
PHILLIPS								
ASSOCIATED GROCERS OF COLORADO	DENVER CO	1	0	0	1	0	0	3,000
ASSOCIATED GROCERS OF NEBRASKA	GERING NE	1	1	0	0	0	0	750
SMALL SUPPLIERS		1	1	0	0	0	0	750
COUNTY TOTAL:		3	2	0	1	0	0	4,500
PITKIN								
ASSOCIATED GROCERS OF COLORADO	DENVER CO	1	0	1	0	0	0	1,500
CITY MARKETS INC	GRAND JUNCTION CO	1	0	0	0	1	0	7,000
WESTERN GROCERS	DENVER CO	1	0	0	0	1	0	5,000
COUNTY TOTAL:		3	0	1	0	2	0	13,500
PROMERS								
ASSOCIATED GROCERS OF COLORADO	DENVER CO	2	1	0	0	1	0	5,750
FLEMING CO INC	WICHITA KS	3	2	0	0	1	0	6,500
SAFEMAY STORES INC	DENVER CO	1	0	0	1	0	0	3,000
COUNTY TOTAL:		6	3	0	1	2	0	15,250

COUNTY SUPPLIERS		TOTAL STORES	500K- 1 MIL	1-2 MIL	2-4 MIL	4-8 MIL	8+ MIL	EST ACV (\$1000)
REGION 08, STATE CO (CONTINUED)								
PUEBLO								
ASSOCIATED GROCERS	PHOENIX AZ	1	0	0	0	1	0	5,000
ASSOCIATED GROCERS OF COLORADO	DENVER CO	16	7	3	2	4	0	37,750
KING SOOPERS INC	DENVER CO	2	0	0	0	1	1	22,000
MC LAKE CO INC	DENVER CO	1	1	0	0	0	0	750
SAFEMAY STORES INC	DENVER CO	3	0	0	1	1	1	25,000
WESTERN GROCERS	DENVER CO	1	0	1	0	0	0	1,500
COUNTY TOTAL:		24	8	4	3	7	2	92,000
RIO BLANCO								
AMERICAN STREVELL CO	GRAND JUNCTION CO	1	0	1	0	0	0	1,500
ASSOCIATED FOOD STORES INC	SALT LAKE CITY UT	1	0	1	0	0	0	1,500
COUNTY TOTAL:		2	0	2	0	0	0	3,000
RIO GRANDE								
ASSOCIATED GROCERS OF COLORADO	DENVER CO	4	2	2	0	0	0	4,500
SAFEMAY STORES INC	DENVER CO	1	0	0	0	1	0	5,000
SMALL SUPPLIERS		1	0	1	0	0	0	1,500
COUNTY TOTAL:		6	2	3	0	1	0	11,000
ROUTT								
ASSOCIATED GROCERS OF COLORADO	DENVER CO	1	1	0	0	0	0	750
CITY MARKETS INC	GRAND JUNCTION CO	1	0	0	1	0	0	3,000
SAFEMAY STORES INC	DENVER CO	1	0	0	0	0	1	15,000
COUNTY TOTAL:		3	1	0	1	0	1	18,750
SAGUACHE								
ASSOCIATED GROCERS OF COLORADO	DENVER CO	2	1	1	0	0	0	2,250
COUNTY TOTAL:		2	1	1	0	0	0	2,250
SAN MIGUEL								
ASSOCIATED GROCERS OF COLORADO	DENVER CO	1	0	0	1	0	0	3,000
SMALL SUPPLIERS		1	1	0	0	0	0	750
COUNTY TOTAL:		2	1	0	1	0	0	3,750
SEDGWICK								
ASSOCIATED GROCERS OF COLORADO	DENVER CO	2	2	0	0	0	0	1,500
SAFEMAY STORES INC	DENVER CO	1	0	1	0	0	0	1,500
COUNTY TOTAL:		3	2	1	0	0	0	3,000
SUMMIT								
ASSOCIATED GROCERS OF COLORADO	DENVER CO	2	1	0	1	0	0	3,750
CITY MARKETS INC	GRAND JUNCTION CO	1	0	0	0	1	0	7,000
SAFEMAY STORES INC	DENVER CO	1	0	0	0	0	1	10,000
UNITED A G STORES	OMAHA NE	1	0	0	1	0	0	3,000
COUNTY TOTAL:		5	1	0	2	1	1	23,750
TELLER								
ASSOCIATED GROCERS OF COLORADO	DENVER CO	2	1	0	1	0	0	3,750
COUNTY TOTAL:		2	1	0	1	0	0	3,750
WASHINGTON								
ASSOCIATED GROCERS OF COLORADO	DENVER CO	2	0	2	0	0	0	3,000
COUNTY TOTAL:		2	0	2	0	0	0	3,000
WELD								
ASSOCIATED GROCERS OF COLORADO	DENVER CO	13	3	6	2	1	1	37,250
ASSOCIATED GROCERS OF COLORADO	ALBUQUERQUE NM	1	1	0	0	0	0	750
ASSOCIATED GROCERS OF NEBRASKA	GERING NE	1	0	1	0	0	0	1,500
KING SOOPERS INC	DENVER CO	1	0	0	0	0	1	15,000
SAFEMAY STORES INC	DENVER CO	3	0	0	0	2	1	25,000
WESTERN GROCERS	DENVER CO	4	1	0	2	1	0	11,750
COUNTY TOTAL:		23	5	7	4	4	3	91,250

## COUNTY SUPPLIERS

REGION 08, STATE CO (CONTINUED)

YUMA

ASSOCIATED GROCERS OF COLORADO DENVER CO

ASSOCIATED GROCERS OF NEBRASKA GERING NE

SAFEWAY STORES INC DENVER CO

COUNTY TOTAL:

CO STATE TOTAL:

TOTAL STORES	500K- 1 MIL	1-2 MIL	2-4 MIL	4-8 MIL	8+ MIL	EST ACV (\$1000)
1	0	0	1	0	0	3,000
2	0	1	1	0	0	4,500
1	0	1	0	0	0	1,500
4	0	2	2	0	0	9,000
471	105	81	90	110	85	2,207,250

COUNTY SUPPLIERS		TOTAL STORES	500K- 1 MIL	1-2 MIL	2-4 MIL	4-8 MIL	8+ MIL	EST ACV (\$1000)
REGION 08								
STATE: MT								
BEAVERHEAD								
ASSOCIATED FOOD STORES INC	HELENA MT	2	0	1	1	0	0	4,500
SAFENAY STORES INC	BUTTE MT	1	0	0	0	1	0	5,000
COUNTY TOTAL:		3	0	1	1	1	0	9,500
BIG HORN								
ASSOCIATED FOOD STORES INC	BILLINGS MT	2	1	1	0	0	0	2,250
SAFENAY STORES INC	BUTTE MT	1	0	0	0	1	0	5,000
COUNTY TOTAL:		3	1	1	0	1	0	7,250
BLAINE								
BUTTREY FOODS	GREAT FALLS MT	2	0	2	0	0	0	3,000
RYAN GROCERY CO	BILLINGS MT	1	1	0	0	0	0	750
COUNTY TOTAL:		3	1	2	0	0	0	3,750
BROADWATER								
ASSOCIATED FOOD STORES INC	HELENA MT	1	0	1	0	0	0	1,500
RYAN MERCANTILE	GREAT FALLS MT	1	1	0	0	0	0	750
COUNTY TOTAL:		2	1	1	0	0	0	2,250
CARBON								
ASSOCIATED FOOD STORES INC	BILLINGS MT	1	0	0	1	0	0	3,000
RYAN GROCERY CO	BILLINGS MT	2	2	0	0	0	0	1,500
COUNTY TOTAL:		3	2	0	1	0	0	4,500
CARTER								
SUPER VALU STORES INC	BISMARCK ND	1	1	0	0	0	0	750
COUNTY TOTAL:		1	1	0	0	0	0	750
CASCADE								
ASSOCIATED FOOD STORES INC	HELENA MT	2	1	0	1	0	0	3,750
BUTTREY FOODS	GREAT FALLS MT	4	0	0	1	3	0	22,000
MILITARY	BUY DIRECT	1	0	0	0	0	1	10,000
RYAN GROCERY CO	BILLINGS MT	2	0	0	2	0	0	6,000
RYAN MERCANTILE	GREAT FALLS MT	4	1	0	0	3	0	15,750
SAFENAY STORES INC	BUTTE MT	3	0	0	2	0	1	16,000
WEST COAST GROCERY CO	SPOKANE WA	1	0	0	0	0	1	15,000
COUNTY TOTAL:		17	2	0	6	6	3	80,500
CHOUTEAU								
ASSOCIATED FOOD STORES INC	HELENA MT	1	0	1	0	0	0	1,500
RYAN GROCERY CO	BILLINGS MT	1	1	0	0	0	0	750
COUNTY TOTAL:		2	1	1	0	0	0	2,250
CUSTER								
ASSOCIATED FOOD STORES INC	BILLINGS MT	1	0	0	1	0	0	3,000
BUTTREY FOODS	GREAT FALLS MT	1	0	0	0	1	0	5,000
SAFENAY STORES INC	BUTTE MT	1	0	0	0	1	0	5,000
COUNTY TOTAL:		3	0	0	1	2	0	13,000
DANIELS								
RYAN GROCERY CO	BILLINGS MT	1	1	0	0	0	0	750
SUPER VALU STORES INC	BISMARCK ND	1	1	0	0	0	0	750
COUNTY TOTAL:		2	2	0	0	0	0	1,500
DAWSON								
ASSOCIATED FOOD STORES INC	BILLINGS MT	1	0	0	1	0	0	3,000
BUTTREY FOODS	GREAT FALLS MT	1	0	0	0	1	0	5,000
SAFENAY STORES INC	BUTTE MT	1	0	1	0	0	0	1,500
COUNTY TOTAL:		3	0	1	1	1	0	9,500
DEER LODGE								
BUTTREY FOODS	GREAT FALLS MT	1	0	0	0	1	0	5,000
SAFENAY STORES INC	BUTTE MT	1	0	0	0	1	0	5,000
COUNTY TOTAL:		2	0	0	0	2	0	10,000

## COUNTY SUPPLIERS

## REGION 03, STATE MT (CONTINUED)

		TOTAL STORES	500K- 1 MIL	1-2 MIL	2-4 MIL	4-8 MIL	8+ MIL	EST ACV (\$1000)
<b>FALLON</b>								
ASSOCIATED FOOD STORES INC	BILLINGS MT	1	0	0	1	0	0	3,000
SUPER VALU STORES INC	BISMARCK ND	1	1	0	0	0	0	750
COUNTY TOTAL:		2	1	0	1	0	0	3,750
<b>FERGUS</b>								
ASSOCIATED FOOD STORES INC	BILLINGS MT	1	0	1	0	0	0	1,500
BUTTREY FOODS	GREAT FALLS MT	1	0	0	0	1	0	5,000
SAFEMAY STORES INC	BUTTE MT	1	0	0	1	0	0	3,000
COUNTY TOTAL:		3	0	1	1	1	0	9,500
<b>FLATHEAD</b>								
AMERICAN STREVELL CO	MISSOULA MT	1	0	0	1	0	0	3,000
BUTTREY FOODS	GREAT FALLS MT	1	0	0	0	0	1	10,000
FRED MEYER INC	PORTLAND OR	3	0	0	2	1	0	13,000
SAFEMAY STORES INC	BUTTE MT	2	0	0	0	2	0	12,000
SUPER VALU STORES INC	BISMARCK ND	1	1	0	0	0	0	750
U R M STORES INC	SPOKANE WA	4	0	2	1	1	0	13,000
COUNTY TOTAL:		12	1	2	4	4	1	51,750
<b>GALLATIN</b>								
ASSOCIATED FOOD STORES INC	BILLINGS MT	1	0	0	1	0	0	3,000
ASSOCIATED FOOD STORES INC	POCATELLO ID	3	2	1	0	0	0	3,000
ASSOCIATED FOOD STORES INC	HELENA MT	1	0	0	1	0	0	3,000
BUTTREY FOODS	GREAT FALLS MT	1	0	0	1	0	0	3,000
M LIVINGSTON AND CO INC	PAQUAN KY	1	0	1	0	0	0	1,500
RYAN GROCERY CO	BILLINGS MT	2	0	1	0	1	0	6,500
SAFEMAY STORES INC	BUTTE MT	1	0	0	0	0	1	10,000
WEST COAST GROCERY CO	SPOKANE WA	1	0	0	0	1	0	5,000
COUNTY TOTAL:		11	2	3	3	2	1	35,000
<b>GLACIER</b>								
AMERICAN STREVELL CO	MISSOULA MT	1	0	1	0	0	0	1,500
ASSOCIATED FOOD STORES INC	HELENA MT	1	0	1	0	0	0	1,500
BUTTREY FOODS	GREAT FALLS MT	1	0	0	0	1	0	5,000
RYAN GROCERY CO	BILLINGS MT	2	0	1	1	0	0	4,500
SAFEMAY STORES INC	BUTTE MT	1	0	1	0	0	0	1,500
SMALL SUPPLIERS		1	0	1	0	0	0	1,500
COUNTY TOTAL:		7	0	5	1	1	0	15,500
<b>GRANITE</b>								
ASSOCIATED FOOD STORES INC	HELENA MT	1	1	0	0	0	0	750
COUNTY TOTAL:		1	1	0	0	0	0	750
<b>HILL</b>								
ASSOCIATED FOOD STORES INC	HELENA MT	1	0	1	0	0	0	1,500
BUTTREY FOODS	GREAT FALLS MT	1	0	0	0	1	0	5,000
RYAN GROCERY CO	BILLINGS MT	1	0	0	1	0	0	3,000
RYAN MERCANTILE	GREAT FALLS MT	1	0	1	0	0	0	1,500
SAFEMAY STORES INC	BUTTE MT	1	0	0	0	1	0	5,000
COUNTY TOTAL:		5	0	2	1	2	0	16,000
<b>LAKE</b>								
FRED MEYER INC	PORTLAND OR	1	0	0	0	1	0	5,000
RYAN GROCERY CO	BILLINGS MT	1	1	0	0	0	0	750
SAFEMAY STORES INC	BUTTE MT	1	0	0	1	0	0	3,000
U R M STORES INC	SPOKANE WA	2	0	1	1	0	0	4,500
COUNTY TOTAL:		5	1	1	2	1	0	13,250
<b>LEWIS &amp; CLARK</b>								
ASSOCIATED FOOD STORES INC	HELENA MT	5	2	0	1	2	0	13,500
BUTTREY FOODS	GREAT FALLS MT	1	0	0	0	0	1	15,000
RYAN GROCERY CO	BILLINGS MT	2	0	1	1	0	0	4,500
RYAN MERCANTILE	GREAT FALLS MT	1	0	0	0	1	0	5,000
SAFEMAY STORES INC	BUTTE MT	1	0	0	0	0	1	10,000
WEST COAST GROCERY CO	SPOKANE WA	1	0	0	0	1	0	7,000
COUNTY TOTAL:		11	2	1	2	4	2	60,000



COUNTY SUPPLIERS		TOTAL STORES	500K- 1 MIL	1-2 MIL	2-4 MIL	4-8 MIL	8+ MIL	EST ACV (\$1000)
REGION 08, STATE MT (CONTINUED)								
LIBERTY								
RYAN GROCERY CO	BILLINGS MT	1	0	1	0	0	0	1,500
SMALL SUPPLIERS		1	1	0	0	0	0	750
COUNTY TOTAL:		2	1	1	0	0	0	2,250
LINCOLN								
AMERICAN STREVELL CO	MISSOULA MT	2	0	2	0	0	0	3,000
U R M STORES INC	SPOKANE WA	4	1	2	0	1	0	8,750
WEST COAST GROCERY CO	SPOKANE WA	1	0	1	0	0	0	1,500
COUNTY TOTAL:		7	1	5	0	1	0	13,250
MADISON								
ASSOCIATED FOOD STORES INC	HELENA MT	3	2	1	0	0	0	3,000
RYAN MERCANTILE	GREAT FALLS MT	1	0	1	0	0	0	1,500
COUNTY TOTAL:		4	2	2	0	0	0	4,500
MC CONE								
SUPER VALU STORES INC	BISHARK ND	1	0	0	1	0	0	3,000
COUNTY TOTAL:		1	0	0	1	0	0	3,000
MEAGHER								
ASSOCIATED FOOD STORES INC	HELENA MT	1	0	1	0	0	0	1,500
RYAN MERCANTILE	GREAT FALLS MT	1	1	0	0	0	0	750
COUNTY TOTAL:		2	1	1	0	0	0	2,250
MINERAL								
AMERICAN STREVELL CO	MISSOULA MT	1	0	1	0	0	0	1,500
FRED MEYER INC	PORTLAND OR	1	0	1	0	0	0	1,500
COUNTY TOTAL:		2	0	2	0	0	0	3,000
MISSOULA								
AMERICAN STREVELL CO	MISSOULA MT	1	1	0	0	0	0	750
ASSOCIATED FOOD STORES INC	HELENA MT	5	2	0	1	2	0	14,500
BUTTEY FOODS	GREAT FALLS MT	2	0	0	0	1	1	22,000
RYAN GROCERY CO	BILLINGS MT	1	0	0	0	1	0	7,000
SAFEMAY STORES INC	BUTTE MT	2	0	0	0	2	0	10,000
U R M STORES INC	SPOKANE WA	2	0	1	0	0	1	11,500
WEST COAST GROCERY CO	SPOKANE WA	2	0	0	0	2	0	10,000
COUNTY TOTAL:		15	3	1	1	8	2	75,750
MUSSELSHELL								
ASSOCIATED FOOD STORES INC	BILLINGS MT	1	0	1	0	0	0	1,500
RYAN GROCERY CO	BILLINGS MT	2	0	1	1	0	0	4,500
COUNTY TOTAL:		3	0	2	1	0	0	6,000
PARK								
RYAN GROCERY CO	BILLINGS MT	2	1	0	0	1	0	5,750
SAFEMAY STORES INC	BUTTE MT	1	0	0	0	1	0	5,000
COUNTY TOTAL:		3	1	0	0	2	0	10,750
PHILLIPS								
ASSOCIATED FOOD STORES INC	HELENA MT	1	0	1	0	0	0	1,500
BUTIREY FOODS	GREAT FALLS MT	1	0	1	0	0	0	1,500
COUNTY TOTAL:		2	0	2	0	0	0	3,000
PONDERA								
BUTIREY FOODS	GREAT FALLS MT	1	0	1	0	0	0	1,500
SAFEMAY STORES INC	BUTTE MT	1	0	1	0	0	0	1,500
COUNTY TOTAL:		2	0	2	0	0	0	3,000
POWDER RVR								
RYAN GROCERY CO	BILLINGS MT	1	1	0	0	0	0	750
COUNTY TOTAL:		1	1	0	0	0	0	750

## COUNTY SUPPLIERS

## REGION 03, STATE MT (CONTINUED)

		TOTAL STORES	500K- 1 MIL	1-2 MIL	2-4 MIL	4-8 MIL	8+ MIL	EST ACV (\$1000)
<b>POWELL</b>								
RYAN GROCERY CO	BILLINGS MT	1	0	1	0	0	0	1,500
SAFEMAY STORES INC	BUTTE MT	1	0	1	0	0	0	1,500
COUNTY TOTAL:		2	0	2	0	0	0	3,000
<b>RAVALLI</b>								
AMERICAN STREVELL CO	MISSOULA MT	2	1	1	0	0	0	2,250
FRED MEYER INC	PORTLAND OR	1	0	1	0	0	0	1,500
RYAN GROCERY CO	BILLINGS MT	1	0	0	1	0	0	3,000
SAFEMAY STORES INC	BUTTE MT	1	0	0	0	1	0	5,000
U R M STORES INC	SPOKANE WA	1	0	0	0	1	0	5,000
WEST COAST GROCERY CO	SPOKANE WA	1	0	1	0	0	0	1,500
COUNTY TOTAL:		7	1	3	1	2	0	18,250
<b>RICHLAND</b>								
ASSOCIATED FOOD STORES INC	SALT LAKE CITY UT	1	1	0	0	0	0	750
ASSOCIATED FOOD STORES INC	BILLINGS MT	1	0	0	0	1	0	5,000
SAFEMAY STORES INC	BUTTE MT	1	0	0	1	0	0	3,000
COUNTY TOTAL:		3	1	0	1	1	0	8,750
<b>ROOSEVELT</b>								
BUTTREY FOODS	GREAT FALLS MT	1	0	0	1	0	0	3,000
NASH-FINCH CO	MINOT ND	1	1	0	0	0	0	750
RYAN GROCERY CO	BILLINGS MT	2	1	1	0	0	0	2,250
COUNTY TOTAL:		4	2	1	1	0	0	6,000
<b>ROSEBUD</b>								
ASSOCIATED FOOD STORES INC	BILLINGS MT	2	1	1	0	0	0	2,250
RYAN GROCERY CO	BILLINGS MT	2	0	0	2	0	0	6,000
COUNTY TOTAL:		4	1	1	2	0	0	8,250
<b>SANDERS</b>								
AMERICAN STREVELL CO	MISSOULA MT	1	0	1	0	0	0	1,500
FRED MEYER INC	PORTLAND OR	1	0	1	0	0	0	1,500
U R M STORES INC	SPOKANE WA	1	1	0	0	0	0	750
WEST COAST GROCERY CO	SPOKANE WA	1	0	1	0	0	0	1,500
COUNTY TOTAL:		4	1	3	0	0	0	5,250
<b>SHERIDAN</b>								
ASSOCIATED FOOD STORES INC	BILLINGS MT	1	0	1	0	0	0	1,500
NASH-FINCH CO	MINOT ND	1	0	0	1	0	0	3,000
SUPER VALU STORES INC	BISMARCK ND	1	1	0	0	0	0	750
COUNTY TOTAL:		3	1	1	1	0	0	5,250
<b>SILVERBOW</b>								
ASSOCIATED FOOD STORES INC	HELENA MT	1	1	0	0	0	0	750
BUTTREY FOODS	GREAT FALLS MT	1	0	0	0	0	1	10,000
RYAN GROCERY CO	BILLINGS MT	2	1	1	0	0	0	2,250
RYAN MERCANTILE	GREAT FALLS MT	1	0	0	0	1	0	7,000
SAFEMAY STORES INC	BUTTE MT	2	0	0	0	1	1	15,000
WEST COAST GROCERY CO	SPOKANE WA	1	0	0	0	1	0	5,000
COUNTY TOTAL:		8	2	1	0	3	2	40,000
<b>STILLWATER</b>								
RYAN GROCERY CO	BILLINGS MT	2	1	1	0	0	0	2,250
COUNTY TOTAL:		2	1	1	0	0	0	2,250
<b>SWEET GRASS</b>								
RYAN GROCERY CO	BILLINGS MT	1	0	1	0	0	0	1,500
COUNTY TOTAL:		1	0	1	0	0	0	1,500
<b>TETON</b>								
ASSOCIATED FOOD STORES INC	HELENA MT	1	1	0	0	0	0	750
RYAN GROCERY CO	BILLINGS MT	1	0	1	0	0	0	1,500
COUNTY TOTAL:		2	1	1	0	0	0	2,250

COUNTY SUPPLIERS		TOTAL STORES	500K- 1 MIL	1-2 MIL	2-4 MIL	4-8 MIL	8+ MIL	EST ACV (\$1000)
REGION 09, STATE MT (CONTINUED)								
TOOLE								
BUTTREY FOODS	GREAT FALLS MT	1	0	0	1	0	0	3,000
RYAN GROCERY CO	BILLINGS MT	1	0	0	1	0	0	3,000
COUNTY TOTAL:		2	0	0	2	0	0	6,000
VALLEY								
ASSOCIATED FOOD STORES INC	BILLINGS MT	1	0	0	1	0	0	3,000
BUTTREY FOODS	GREAT FALLS MT	1	0	0	0	1	0	5,000
RYAN GROCERY CO	BILLINGS MT	1	1	0	0	0	0	750
COUNTY TOTAL:		3	1	0	1	1	0	8,750
WHEATLAND								
ASSOCIATED FOOD STORES INC	HELENA MT	1	0	0	1	0	0	3,000
COUNTY TOTAL:		1	0	0	1	0	0	3,000
WIDAUN								
SUPER VALU STORES INC	BISMARCK ND	2	2	0	0	0	0	1,500
COUNTY TOTAL:		2	2	0	0	0	0	1,500
YELLOWSTONE								
ASSOCIATED FOOD STORES INC	BILLINGS MT	8	1	3	3	1	0	19,250
BUTTREY FOODS	GREAT FALLS MT	3	0	0	0	1	2	25,000
RYAN GROCERY CO	BILLINGS MT	12	3	6	2	1	0	22,250
SAFEMAY STORES INC	BUTTE MT	5	0	1	2	2	0	19,500
WEST COAST GROCERY CO	SPOKANE WA	2	0	0	0	2	0	14,000
COUNTY TOTAL:		30	4	10	7	7	2	100,000
MT STATE TOTAL:		223	47	65	45	53	13	705,750

COUNTY SUPPLIERS		TOTAL STORES	500K- 1 MIL	1-2 MIL	2-4 MIL	4-8 MIL	8+ MIL	EST ACV (\$1000)
REGION 08								
STATE: ND								
ADAMS								
FAIRWAY FOODS INC	FARGO ND	1	1	0	0	0	0	750
SUPER VALU STORES INC	BISMARCK ND	2	0	0	2	0	0	6,000
COUNTY TOTAL:		3	1	0	2	0	0	6,750
BARNES								
NASH-FINCH CO	FARGO ND	1	0	1	0	0	0	1,500
RED OHL FOOD STORES INC	HOPKINS MN	1	0	1	0	0	0	1,500
SUPER VALU STORES INC	FARGO ND	1	0	0	0	1	0	5,000
COUNTY TOTAL:		3	0	2	0	1	0	8,000
BOTTINEAU								
NASH-FINCH CO	MINOT ND	1	0	1	0	0	0	1,500
RED OHL FOOD STORES INC	HOPKINS MN	1	0	1	0	0	0	1,500
COUNTY TOTAL:		2	0	2	0	0	0	3,000
BOWMAN								
FAIRWAY FOODS INC	FARGO ND	1	1	0	0	0	0	750
RED OHL FOOD STORES INC	HOPKINS MN	1	1	0	0	0	0	750
SUPER VALU STORES INC	BISMARCK ND	2	1	1	0	0	0	2,250
COUNTY TOTAL:		4	3	1	0	0	0	3,750
BURKE								
NASH-FINCH CO	MINOT ND	1	1	0	0	0	0	750
SUPER VALU STORES INC	BISMARCK ND	2	2	0	0	0	0	1,500
COUNTY TOTAL:		3	3	0	0	0	0	2,250
BURLEIGH								
FAIRWAY FOODS INC	FARGO ND	1	0	1	0	0	0	1,500
L B HARTZ WHOLESALE INC	THIEF RIVER FALLS MN	1	0	0	1	0	0	3,000
NASH-FINCH CO	FARGO ND	2	0	1	0	1	0	8,500
RED OHL FOOD STORES INC	HOPKINS MN	2	0	0	1	1	0	3,000
SUPER VALU STORES INC	BISMARCK ND	5	1	0	0	2	2	37,750
COUNTY TOTAL:		11	1	2	2	4	2	58,750
CASS								
BUTTREY FOODS	GREAT FALLS MT	1	0	0	0	0	1	10,000
FAIRWAY FOODS INC	NORTHFIELD MN	1	1	0	0	0	0	750
NASH-FINCH CO	FARGO ND	5	2	0	1	2	0	14,500
RED OHL FOOD STORES INC	HOPKINS MN	2	1	0	0	1	0	5,750
SUPER VALU STORES INC	FARGO ND	5	1	0	1	1	2	38,750
COUNTY TOTAL:		14	5	0	2	4	3	69,750
CAVALIER								
GATEWAY FOODS/MAY EPOS	MINNEAPOLIS MN	1	0	1	0	0	0	1,500
SUPER VALU STORES INC	FARGO ND	1	0	0	1	0	0	3,000
COUNTY TOTAL:		2	0	1	1	0	0	4,500
DICKEY								
FAIRWAY FOODS INC	NORTHFIELD MN	1	1	0	0	0	0	750
NASH-FINCH CO	ABERDEEN SD	1	0	1	0	0	0	1,500
SUPER VALU STORES INC	FARGO ND	1	0	0	1	0	0	3,000
COUNTY TOTAL:		3	1	1	1	0	0	5,250
DIVIDE								
NASH-FINCH CO	MINOT ND	1	1	0	0	0	0	750
SUPER VALU STORES INC	BISMARCK ND	1	0	1	0	0	0	1,500
COUNTY TOTAL:		2	1	1	0	0	0	2,250
DUNN								
SUPER VALU STORES INC	BISMARCK ND	1	1	0	0	0	0	750
COUNTY TOTAL:		1	1	0	0	0	0	750

COUNTY SUPPLIERS		TOTAL STORES	500K- 1 MIL	1-2 MIL	2-4 MIL	4-8 MIL	8+ MIL	EST ACV (\$1000)
REGION 03, STATE ND (CONTINUED)								
EDDY								
FAIRWAY FOODS INC	FARGO ND	1	0	1	0	0	0	1,500
COUNTY TOTAL:		1	0	1	0	0	0	1,500
EMMONS								
NASH-FINCH CO	ABERDEEN SD	1	1	0	0	0	0	750
SUPER VALU STORES INC	BISMARCK ND	2	1	1	0	0	0	2,250
COUNTY TOTAL:		3	2	1	0	0	0	3,000
FOSTER								
NASH-FINCH CO	FARGO ND	1	0	0	1	0	0	3,000
COUNTY TOTAL:		1	0	0	1	0	0	3,000
GOLDEN VLY								
FAIRWAY FOODS INC	FARGO ND	1	1	0	0	0	0	750
SUPER VALU STORES INC	BISMARCK ND	1	1	0	0	0	0	750
COUNTY TOTAL:		2	2	0	0	0	0	1,500
GRAND FORKS								
FAIRWAY FOODS INC	NORTHFIELD MN	1	0	1	0	0	0	1,500
FAIRWAY FOODS INC	FARGO ND	2	0	1	0	1	0	8,500
MILITARY	BUY DIRECT	1	0	0	0	1	0	7,000
NASH-FINCH CO	FARGO ND	5	0	1	2	1	1	22,500
RED OWL FOOD STORES INC	HOPKINS MN	1	0	0	0	0	1	10,000
COUNTY TOTAL:		10	0	3	2	3	2	49,500
GRANT								
NASH-FINCH CO	ABERDEEN SD	1	1	0	0	0	0	750
SUPER VALU STORES INC	BISMARCK ND	3	3	0	0	0	0	2,250
COUNTY TOTAL:		4	4	0	0	0	0	3,000
GRIGGS								
NASH-FINCH CO	FARGO ND	1	0	0	1	0	0	3,000
SUPER VALU STORES INC	FARGO ND	1	0	1	0	0	0	1,500
COUNTY TOTAL:		2	0	1	1	0	0	4,500
HETTINGER								
FAIRWAY FOODS INC	FARGO ND	1	1	0	0	0	0	750
SUPER VALU STORES INC	BISMARCK ND	1	0	1	0	0	0	1,500
COUNTY TOTAL:		2	1	1	0	0	0	2,250
KIDDER								
SUPER VALU STORES INC	BISMARCK ND	2	2	0	0	0	0	1,500
COUNTY TOTAL:		2	2	0	0	0	0	1,500
LA MOURE								
RED OWL FOOD STORES INC	HOPKINS MN	2	0	2	0	0	0	3,000
COUNTY TOTAL:		2	0	2	0	0	0	3,000
LOGAN								
RED OWL FOOD STORES INC	HOPKINS MN	1	1	0	0	0	0	750
SUPER VALU STORES INC	BISMARCK ND	1	1	0	0	0	0	750
COUNTY TOTAL:		2	2	0	0	0	0	1,500
MCHEERY								
NASH-FINCH CO	MINOT ND	1	1	0	0	0	0	750
RED OWL FOOD STORES INC	HOPKINS MN	1	0	1	0	0	0	1,500
COUNTY TOTAL:		2	1	1	0	0	0	2,250
MCINTOSH								
RED OWL FOOD STORES INC	HOPKINS MN	1	0	1	0	0	0	1,500
SUPER VALU STORES INC	FARGO ND	3	2	1	0	0	0	3,000
COUNTY TOTAL:		4	2	2	0	0	0	4,500

COUNTY SUPPLIERS		TOTAL STORES	500K- 1 MIL	1-2 MIL	2-4 MIL	4-8 MIL	8+ MIL	EST ACV (\$1000)
REGION 08, STATE ND (CONTINUED)								
<b>MCKENZIE</b>								
FAIRWAY FOODS INC	NORTHFIELD MN	1	1	0	0	0	0	750
NASH-FINCH CO	MINOT ND	1	0	1	0	0	0	1,500
SUPER VALU STORES INC	BISMARCK ND	1	1	0	0	0	0	750
COUNTY TOTAL:		3	2	1	0	0	0	3,000
<b>MCLEAN</b>								
FAIRWAY FOODS INC	FARGO ND	1	1	0	0	0	0	750
NASH-FINCH CO	MINOT ND	2	2	0	0	0	0	1,500
RED OWL FOOD STORES INC	HOPKINS MN	1	1	0	0	0	0	750
SUPER VALU STORES INC	BISMARCK ND	3	2	1	0	0	0	3,000
COUNTY TOTAL:		7	6	1	0	0	0	6,000
<b>MERCER</b>								
NASH-FINCH CO	MINOT ND	1	0	1	0	0	0	1,500
RED OWL FOOD STORES INC	HOPKINS MN	2	0	2	0	0	0	3,000
SUPER VALU STORES INC	BISMARCK ND	4	1	2	1	0	0	6,750
COUNTY TOTAL:		7	1	5	1	0	0	11,250
<b>MORTON</b>								
FAIRWAY FOODS INC	FARGO ND	1	0	1	0	0	0	1,500
NASH-FINCH CO	MINOT ND	1	0	1	0	0	0	1,500
RED OWL FOOD STORES INC	HOPKINS MN	1	0	1	0	0	0	1,500
SUPER VALU STORES INC	BISMARCK ND	5	3	1	0	1	0	10,750
COUNTY TOTAL:		8	3	4	0	1	0	15,250
<b>MOUNTRAIL</b>								
FAIRWAY FOODS INC	FARGO ND	1	0	0	1	0	0	3,000
NASH-FINCH CO	MINOT ND	2	1	1	0	0	0	2,250
SUPER VALU STORES INC	BISMARCK ND	1	1	0	0	0	0	750
COUNTY TOTAL:		4	2	1	1	0	0	6,000
<b>OLIVER</b>								
SUPER VALU STORES INC	BISMARCK ND	1	1	0	0	0	0	750
COUNTY TOTAL:		1	1	0	0	0	0	750
<b>PEMBINA</b>								
L B HARTZ WHOLESALE INC	THIEF RIVER FALLS MN	1	0	1	0	0	0	1,500
NASH-FINCH CO	FARGO ND	2	1	1	0	0	0	2,250
SUPER VALU STORES INC	FARGO ND	2	0	2	0	0	0	3,000
COUNTY TOTAL:		5	1	4	0	0	0	6,750
<b>PIERCE</b>								
NASH-FINCH CO	MINOT ND	1	0	1	0	0	0	1,500
RED OWL FOOD STORES INC	HOPKINS MN	1	1	0	0	0	0	750
SUPER VALU STORES INC	FARGO ND	1	0	0	1	0	0	3,000
COUNTY TOTAL:		3	1	1	1	0	0	5,250
<b>RAMSEY</b>								
FAIRWAY FOODS INC	FARGO ND	2	0	1	1	0	0	4,500
RED OWL FOOD STORES INC	HOPKINS MN	1	0	0	1	0	0	3,000
SUPER VALU STORES INC	FARGO ND	1	0	0	0	1	0	5,000
COUNTY TOTAL:		4	0	1	2	1	0	12,500
<b>RAMSON</b>								
NASH-FINCH CO	FARGO ND	1	0	1	0	0	0	1,500
SUPER VALU STORES INC	FARGO ND	2	2	0	0	0	0	1,500
COUNTY TOTAL:		3	2	1	0	0	0	3,000
<b>RENVILLE</b>								
SUPER VALU STORES INC	BISMARCK ND	1	1	0	0	0	0	750
COUNTY TOTAL:		1	1	0	0	0	0	750

## COUNTY SUPPLIERS

REGION 09, STATE ND (CONTINUED)

		TOTAL STORES	500K- 1 MIL	1-2 MIL	2-4 MIL	4-8 MIL	8+ MIL	EST ACV (\$1000)
<b>RICHLAND</b>								
FAIRWAY FOODS INC	FARGO ND	3	2	0	1	0	0	4,500
NASH-FINCH CO	FARGO ND	2	1	1	0	0	0	2,250
RED OWL FOOD STORES INC	HOPKINS MN	1	1	0	0	0	0	750
SUPER VALU STORES INC	HOPKINS MN	1	0	0	1	0	0	3,000
TWIN PORTS GROCERY CO	SUPERIOR WI	1	0	0	1	0	0	3,000
COUNTY TOTAL:		8	4	1	3	0	0	13,500
<b>ROLETTE</b>								
FAIRWAY FOODS INC	FARGO ND	1	0	0	1	0	0	3,000
NASH-FINCH CO	MINOT ND	1	1	0	0	0	0	750
RED OWL FOOD STORES INC	HOPKINS MN	1	0	1	0	0	0	1,500
SUPER VALU STORES INC	FARGO ND	1	0	1	0	0	0	1,500
COUNTY TOTAL:		4	1	2	1	0	0	6,750
<b>SARGENT</b>								
SUPER VALU STORES INC	FARGO ND	1	1	0	0	0	0	750
COUNTY TOTAL:		1	1	0	0	0	0	750
<b>SHERIDAN</b>								
SUPER VALU STORES INC	BISHARK ND	1	1	0	0	0	0	750
COUNTY TOTAL:		1	1	0	0	0	0	750
<b>SIOUX</b>								
SUPER VALU STORES INC	BISMARK ND	1	1	0	0	0	0	750
COUNTY TOTAL:		1	1	0	0	0	0	750
<b>STARK</b>								
FAIRWAY FOODS INC	FARGO ND	3	0	1	1	0	1	14,500
RED OWL FOOD STORES INC	HOPKINS MN	1	0	0	1	0	0	3,000
SUPER VALU STORES INC	BISMARK ND	2	1	0	0	1	0	7,750
COUNTY TOTAL:		6	1	1	2	1	1	25,250
<b>STUTSMAN</b>								
FAIRWAY FOODS INC	FARGO ND	1	0	0	1	0	0	3,000
RED OWL FOOD STORES INC	HOPKINS MN	1	0	0	0	1	0	5,000
SUPER VALU STORES INC	FARGO ND	2	0	0	0	2	0	10,000
COUNTY TOTAL:		4	0	0	1	3	0	18,000
<b>TOWNER</b>								
FAIRWAY FOODS INC	FARGO ND	1	0	1	0	0	0	1,500
SUPER VALU STORES INC	FARGO ND	1	1	0	0	0	0	750
COUNTY TOTAL:		2	1	1	0	0	0	2,250
<b>TRAILL</b>								
FAIRWAY FOODS INC	FARGO ND	1	0	1	0	0	0	1,500
NASH-FINCH CO	FARGO ND	1	1	0	0	0	0	750
SUPER VALU STORES INC	FARGO ND	1	0	1	0	0	0	1,500
COUNTY TOTAL:		3	1	2	0	0	0	3,750
<b>WALSH</b>								
FAIRWAY FOODS INC	FARGO ND	1	0	0	0	0	1	15,000
NASH-FINCH CO	FARGO ND	1	0	0	1	0	0	3,000
RED OWL FOOD STORES INC	HOPKINS MN	1	0	1	0	0	0	1,500
SUPER VALU STORES INC	FARGO ND	1	0	0	1	0	0	3,000
COUNTY TOTAL:		4	0	1	2	0	1	22,500
<b>WARD</b>								
MILITARY	BUY DIRECT	1	0	0	0	0	1	10,000
NASH-FINCH CO	MINOT ND	5	2	0	1	2	0	14,500
RED OWL FOOD STORES INC	HOPKINS MN	3	0	1	2	0	0	7,500
SUPER VALU STORES INC	BISMARK ND	3	0	1	0	0	2	21,500
COUNTY TOTAL:		12	2	2	3	2	3	53,500

## COUNTY SUPPLIERS

REGION 08, STATE ND (CONTINUED)

		TOTAL STORES	500K- 1 MIL	1-2 MIL	2-4 MIL	4-8 MIL	8+ MIL	EST ACV (\$1000)
<b>WELLS</b>								
NASH-FINCH CO	MINOT ND	1	1	0	0	0	0	750
RED OWL FOOD STORES INC	HOPKINS MN	1	1	0	0	0	0	750
SUPER VALU STORES INC	FARGO ND	2	1	1	0	0	0	2,250
COUNTY TOTAL:		4	3	1	0	0	0	3,750
<b>WILLIAMS</b>								
NASH-FINCH CO	MINOT ND	2	0	1	0	0	1	11,500
RED OWL FOOD STORES INC	HOPKINS MN	1	0	0	0	1	0	5,000
SUPER VALU STORES INC	BISMARCK ND	3	2	1	0	0	0	3,000
COUNTY TOTAL:		6	2	2	0	1	1	19,500
ND STATE TOTAL:		187	70	54	29	21	13	487,500



## COUNTY SUPPLIERS

REGION 05  
STATE: SD

TOTAL STORES	500K- 1 MIL	1-2 MIL	2-4 MIL	4-8 MIL	8+ MIL	EST ACV (\$1000)
-----------------	----------------	------------	------------	------------	-----------	---------------------

## BEADLE

AFFILIATED FOODS CO OP INC	NORFOLK NE	1	0	1	0	0	0	1,500
FAIRWAY FOODS INC	FARGO ND	1	0	0	1	0	0	3,000
NASH-FINCH CO	SIOUX FALLS SD	1	1	0	0	0	0	750
PARK GRANT CO	HURON SD	1	1	0	0	0	0	750
RED OWL FOOD STORES INC	HOPKINS MN	1	0	0	1	0	0	3,000
SUPER VALU STORES INC	DES MOINES IA	1	0	0	0	1	0	5,000
COUNTY TOTAL:		6	2	1	2	1	0	14,000

## BENNETT

AFFILIATED FOODS CO OP INC	NORFOLK NE	1	1	0	0	0	0	750
NASH-FINCH CO	RAPID CITY SD	1	0	1	0	0	0	1,500
COUNTY TOTAL:		2	1	1	0	0	0	2,250

## BON HOMME

AFFILIATED FOODS CO OP INC	NORFOLK NE	4	4	0	0	0	0	3,000
M AND J R HAKES	LAURENS IA	1	1	0	0	0	0	750
COUNTY TOTAL:		5	5	0	0	0	0	3,750

## BROOKINGS

GATEWAY FOODS OF IOWA	CHEROKEE IA	1	0	0	0	0	1	10,000
M AND J R HAKES	LAURENS IA	2	2	0	0	0	0	1,500
NASH-FINCH CO	SIOUX FALLS SD	1	1	0	0	0	0	750
RED OWL FOOD STORES INC	HOPKINS MN	1	0	0	1	0	0	3,000
SUPER VALU STORES INC	HOPKINS MN	1	0	0	1	0	0	3,000
COUNTY TOTAL:		6	3	0	2	0	1	18,250

## BROWN

FAIRWAY FOODS INC	FARGO ND	2	1	0	0	1	0	5,750
NASH-FINCH CO	ABERDEEN SD	3	2	0	1	0	0	4,500
NASH-FINCH CO	SIOUX FALLS SD	1	0	0	0	1	0	5,000
RED OWL FOOD STORES INC	HOPKINS MN	1	0	1	0	0	0	1,500
SUPER VALU STORES INC	FARGO ND	1	0	0	0	0	1	10,000
COUNTY TOTAL:		8	3	1	1	2	1	26,750

## BRULE

AFFILIATED FOODS CO OP INC	NORFOLK NE	2	1	0	1	0	0	3,750
GATEWAY FOODS INC	LA CROSSE WI	1	0	1	0	0	0	1,500
SUPER VALU STORES INC	BISMARCK ND	1	0	1	0	0	0	1,500
COUNTY TOTAL:		4	1	2	1	0	0	6,750

## BUFFALO

SUPER VALU STORES INC	BISMARCK ND	1	1	0	0	0	0	750
COUNTY TOTAL:		1	1	0	0	0	0	750

## BUTTE

AFFILIATED FOODS CO OP INC	NORFOLK NE	1	1	0	0	0	0	750
NASH-FINCH CO	RAPID CITY SD	2	1	0	1	0	0	3,750
SAFEWAY STORES INC	DENVER CO	1	0	0	1	0	0	3,000
COUNTY TOTAL:		4	2	0	2	0	0	7,500

## CHARLES MIX

AFFILIATED FOODS CO OP INC	NORFOLK NE	3	3	0	0	0	0	2,250
GATEWAY FOODS INC	LA CROSSE WI	2	1	0	1	0	0	3,750
SMALL SUPPLIERS		1	0	1	0	0	0	1,500
COUNTY TOTAL:		6	4	1	1	0	0	7,500

## CLARK

RED OWL FOOD STORES INC	HOPKINS MN	1	0	1	0	0	0	1,500
SUPER VALU STORES INC	FARGO ND	1	0	1	0	0	0	1,500
COUNTY TOTAL:		2	0	2	0	0	0	3,000

## COUNTY SUPPLIERS

## REGION 08, STATE SD (CONTINUED)

		TOTAL STORES	500K- 1 MIL	1-2 MIL	2-4 MIL	4-8 MIL	8+ MIL	EST ACV (\$1000)
<b>CLAY</b>								
AFFILLIATED FOODS CO OP INC	NORFOLK NE	1	0	0	1	0	0	3,000
NASH-FINCH CO	SIOUX FALLS SD	1	0	1	0	0	0	1,500
SUPER VALU STORES INC	DES MOINES IA	1	0	0	1	0	0	3,000
SUPER VALU STORES INC	HOPKINS MN	1	0	0	0	1	0	5,000
COUNTY TOTAL:		4	0	1	2	1	0	12,500
<b>CODINGTON</b>								
FAIRWAY FOODS INC	FARGO ND	2	0	0	2	0	0	6,000
NASH-FINCH CO	SIOUX FALLS SD	2	0	1	1	0	0	4,500
RED OWL FOOD STORES INC	HOPKINS MN	1	0	0	1	0	0	3,000
SUPER VALU STORES INC	HOPKINS MN	2	0	0	0	2	0	10,000
COUNTY TOTAL:		7	0	1	4	2	0	23,500
<b>CUSTER</b>								
NASH-FINCH CO	RAPID CITY SD	2	1	0	1	0	0	3,750
COUNTY TOTAL:		2	1	0	1	0	0	3,750
<b>DAVISON</b>								
AFFILLIATED FOODS CO OP INC	NORFOLK NE	1	0	0	1	0	0	3,000
GATEWAY FOODS INC	LA CROSSE WI	1	0	0	0	1	0	5,000
NASH-FINCH CO	SIOUX FALLS SD	1	0	1	0	0	0	1,500
RED OWL FOOD STORES INC	HOPKINS MN	1	0	0	1	0	0	3,000
SUPER VALU STORES INC	DES MOINES IA	2	0	0	0	1	1	15,000
COUNTY TOTAL:		6	0	1	2	2	1	27,500
<b>DAY</b>								
NASH-FINCH CO	RAPID CITY SD	1	0	1	0	0	0	1,500
RED OWL FOOD STORES INC	HOPKINS MN	1	0	1	0	0	0	1,500
COUNTY TOTAL:		2	0	2	0	0	0	3,000
<b>DEVEL</b>								
SUPER VALU STORES INC	HOPKINS MN	1	1	0	0	0	0	750
COUNTY TOTAL:		1	1	0	0	0	0	750
<b>DENEY</b>								
NASH-FINCH CO	ABERDEEN SD	1	1	0	0	0	0	750
SUPER VALU STORES INC	BISMARCK ND	1	0	0	1	0	0	3,000
COUNTY TOTAL:		2	1	0	1	0	0	3,750
<b>DOUGLAS</b>								
AFFILLIATED FOODS CO OP INC	NORFOLK NE	1	1	0	0	0	0	750
COUNTY TOTAL:		1	1	0	0	0	0	750
<b>EDMUNDS</b>								
FAIRWAY FOODS INC	FARGO ND	1	1	0	0	0	0	750
SUPER VALU STORES INC	FARGO ND	1	1	0	0	0	0	750
COUNTY TOTAL:		2	2	0	0	0	0	1,500
<b>FALL RIVER</b>								
ASSOCIATED GROCERS OF NEBRASKA	GERING NE	1	1	0	0	0	0	750
NASH-FINCH CO	RAPID CITY SD	3	1	1	0	1	0	9,250
SUPER VALU STORES INC	BISMARCK ND	1	0	0	1	0	0	3,000
SMALL SUPPLIERS		2	2	0	0	0	0	1,500
COUNTY TOTAL:		7	4	1	1	1	0	14,500
<b>FAULK</b>								
SUPER VALU STORES INC	BISMARCK ND	1	1	0	0	0	0	750
COUNTY TOTAL:		1	1	0	0	0	0	750
<b>GRANT</b>								
NASH-FINCH CO	SIOUX FALLS SD	1	0	1	0	0	0	1,500
RED OWL FOOD STORES INC	HOPKINS MN	1	0	1	0	0	0	1,500
SUPER VALU STORES INC	FARGO ND	1	0	0	1	0	0	3,000
COUNTY TOTAL:		3	0	2	1	0	0	6,000

COUNTY SUPPLIERS		TOTAL STORES	500K- 1 MIL	1-2 MIL	2-4 MIL	4-8 MIL	8+ MIL	EST ACV (\$1000)
REGION 08, STATE SD (CONTINUED)								
GREGORY								
AFFILIATED FOODS CO OP INC	NORFOLK NE	3	3	0	0	0	0	2,250
GATEWAY FOODS INC	LA CROSSE WI	1	0	0	1	0	0	3,000
THE ULRY-TALBERT CO	GRAND ISLAND NE	1	0	1	0	0	0	1,500
COUNTY TOTAL:		5	3	1	1	0	0	6,750
HAAKON								
AFFILIATED FOODS CO OP INC	NORFOLK NE	1	1	0	0	0	0	750
SUPER VALU STORES INC	BISMARCK ND	2	2	0	0	0	0	1,500
COUNTY TOTAL:		3	3	0	0	0	0	2,250
HAND								
FAIRWAY FOODS INC	FARGO ND	1	0	1	0	0	0	1,500
PARK GRANT CO	HURON SD	1	1	0	0	0	0	750
SUPER VALU STORES INC	BISMARCK ND	1	0	1	0	0	0	1,500
COUNTY TOTAL:		3	1	2	0	0	0	3,750
HUGHES								
AFFILIATED FOODS CO OP INC	NORFOLK NE	3	0	0	3	0	0	9,000
RED OWL FOOD STORES INC	HOPKINS MN	1	0	0	0	0	1	15,000
SUPER VALU STORES INC	HOPKINS MN	1	0	0	1	0	0	3,000
COUNTY TOTAL:		5	0	0	4	0	1	27,000
HUTCHINSON								
AFFILIATED FOODS CO OP INC	NORFOLK NE	1	1	0	0	0	0	750
GATEWAY FOODS INC	LA CROSSE WI	1	1	0	0	0	0	750
NASH-FINCH CO	SIOUX FALLS SD	2	1	1	0	0	0	2,250
SMALL SUPPLIERS		2	0	1	1	0	0	4,500
COUNTY TOTAL:		6	3	2	1	0	0	8,250
HYDE								
RED OWL FOOD STORES INC	HOPKINS MN	1	0	1	0	0	0	1,500
COUNTY TOTAL:		1	0	1	0	0	0	1,500
JERAULD								
AFFILIATED FOODS CO OP INC	NORFOLK NE	1	1	0	0	0	0	750
NASH-FINCH CO	SIOUX FALLS SD	1	1	0	0	0	0	750
COUNTY TOTAL:		2	2	0	0	0	0	1,500
JONES								
AFFILIATED FOODS CO OP INC	NORFOLK NE	1	1	0	0	0	0	750
SUPER VALU STORES INC	BISMARCK ND	1	1	0	0	0	0	750
COUNTY TOTAL:		2	2	0	0	0	0	1,500
KINGSBURY								
NASH-FINCH CO	SIOUX FALLS SD	1	0	1	0	0	0	1,500
COUNTY TOTAL:		1	0	1	0	0	0	1,500
LAKE								
NASH-FINCH CO	SIOUX FALLS SD	1	0	0	1	0	0	3,000
SUPER VALU STORES INC	HOPKINS MN	1	0	0	1	0	0	3,000
COUNTY TOTAL:		2	0	0	2	0	0	6,000
LANDENCE								
NASH-FINCH CO	RAPID CITY SD	3	1	1	0	1	0	7,250
SAFEMART STORES INC	DENVER CO	2	0	0	1	1	0	10,000
SMALL SUPPLIERS		1	1	0	0	0	0	750
COUNTY TOTAL:		6	2	1	1	2	0	18,000
LINCOLN								
AFFILIATED FOODS CO OP INC	NORFOLK NE	1	1	0	0	0	0	750
NASH-FINCH CO	SIOUX FALLS SD	2	1	0	1	0	0	3,750
COUNTY TOTAL:		3	2	0	1	0	0	4,500

COUNTY SUPPLIERS		TOTAL STORES	500K- 1 MIL	1-2 MIL	2-4 MIL	4-8 MIL	8+ MIL	EST ACV (\$1000)
REGION 03, STATE SD (CONTINUED)								
MARSHALL								
RED OWL FOOD STORES INC	HOPKINS MN	1	0	1	0	0	0	1,500
COUNTY TOTAL:		1	0	1	0	0	0	1,500
MC COOK								
NASH-FINCH CO	SIOUX FALLS SD	1	1	0	0	0	0	750
COUNTY TOTAL:		1	1	0	0	0	0	750
MC PHERSON								
RED OWL FOOD STORES INC	HOPKINS MN	1	1	0	0	0	0	750
SUPER VALU STORES INC	FARGO ND	1	1	0	0	0	0	750
SMALL SUPPLIERS		1	1	0	0	0	0	750
COUNTY TOTAL:		3	3	0	0	0	0	2,250
MEADE								
AFFILIATED FOODS CO OP INC	NORFOLK NE	1	0	0	1	0	0	3,000
MILITARY	EUY DIRECT	1	0	0	0	0	1	10,000
NASH-FINCH CO	RAPID CITY SD	1	0	0	1	0	0	3,000
SUPER VALU STORES INC	BISMARK ND	2	0	1	1	0	0	4,500
SMALL SUPPLIERS		1	0	0	1	0	0	3,000
COUNTY TOTAL:		6	0	1	4	0	1	23,500
MELLETTTE								
AFFILIATED FOODS CO OP INC	NORFOLK NE	2	2	0	0	0	0	1,500
COUNTY TOTAL:		2	2	0	0	0	0	1,500
MINNEHAHA								
AFFILIATED FOODS CO OP INC	NORFOLK NE	1	1	0	0	0	0	750
GATEWAY FOODS OF IOWA	CHEROKEE IA	2	0	0	1	0	1	13,000
HINKY DINKY STORES	OMAHA NE	3	0	0	1	0	2	28,000
M AND J R HAKES	LAURENS IA	1	1	0	0	0	0	750
NASH-FINCH CO	SIOUX FALLS SD	8	4	1	2	0	1	20,500
RED OWL FOOD STORES INC	HOPKINS MN	1	0	0	0	0	1	15,000
SAFEMAY STORES INC	OMAHA NE	1	0	0	0	0	1	10,000
SUPER VALU STORES INC	DES MOINES IA	9	1	1	3	4	0	33,250
COUNTY TOTAL:		26	7	2	7	4	6	121,250
MOODY								
M AND J R HAKES	LAURENS IA	2	2	0	0	0	0	1,500
COUNTY TOTAL:		2	2	0	0	0	0	1,500
PENNINGTON								
AFFILIATED FOODS CO OP INC	NORFOLK NE	3	1	0	2	0	0	6,750
NASH-FINCH CO	RAPID CITY SD	7	1	3	0	3	0	24,250
SAFEMAY STORES INC	DENVER CO	3	0	0	1	1	1	18,000
SUPER VALU STORES INC	BISMARK ND	2	1	0	0	1	0	5,750
SMALL SUPPLIERS		2	0	0	2	0	0	6,000
COUNTY TOTAL:		17	3	3	5	5	1	60,750
PERKINS								
NASH-FINCH CO	ABERDEEN SD	1	0	1	0	0	0	1,500
RED OWL FOOD STORES INC	HOPKINS MN	2	1	1	0	0	0	2,250
SUPER VALU STORES INC	BISMARK ND	1	0	0	1	0	0	3,000
COUNTY TOTAL:		4	1	2	1	0	0	6,750
POTTER								
RED OWL FOOD STORES INC	HOPKINS MN	1	1	0	0	0	0	750
SUPER VALU STORES INC	BISMARK ND	1	0	1	0	0	0	1,500
COUNTY TOTAL:		2	1	1	0	0	0	2,250
ROBERTS								
FAIRWAY FOODS INC	FARGO ND	1	1	0	0	0	0	750
NASH-FINCH CO	ABERDEEN SD	1	1	0	0	0	0	750
RED OWL FOOD STORES INC	HOPKINS MN	1	0	1	0	0	0	1,500
SUPER VALU STORES INC	FARGO ND	1	1	0	0	0	0	750
COUNTY TOTAL:		4	3	1	0	0	0	3,750

## COUNTY SUPPLIERS

REGION 08, STATE SD (CONTINUED)

		TOTAL STORES	500K- 1 MIL	1-2 MIL	2-4 MIL	4-8 MIL	8+ MIL	EST ACV (\$1000)
<b>SANDERN</b>								
SMALL SUPPLIERS		1	1	0	0	0	0	750
COUNTY TOTAL:		1	1	0	0	0	0	750
<b>SHANNON</b>								
UNITED A G STORES	OMAHA NE	1	0	1	0	0	0	1,500
COUNTY TOTAL:		1	0	1	0	0	0	1,500
<b>SPINK</b>								
NASH-FINCH CO	ABERDEEN SD	1	0	1	0	0	0	1,500
RED OWL FOOD STORES INC	HOPKINS MN	1	0	1	0	0	0	1,500
SUPER VALU STORES INC	FARGO ND	1	0	1	0	0	0	1,500
COUNTY TOTAL:		3	0	3	0	0	0	4,500
<b>STANLEY</b>								
AFFILIATED FOODS CO OP INC	NORFOLK NE	1	0	1	0	0	0	1,500
SMALL SUPPLIERS		1	0	0	0	1	0	5,000
COUNTY TOTAL:		2	0	1	0	1	0	6,500
<b>TODD</b>								
AFFILIATED FOODS CO OP INC	NORFOLK NE	1	0	1	0	0	0	1,500
GATEWAY FOODS INC	LA CROSSE WI	1	0	0	1	0	0	3,000
UNITED A G STORES	OMAHA NE	1	0	0	1	0	0	3,000
COUNTY TOTAL:		3	0	1	2	0	0	7,500
<b>TRIPP</b>								
AFFILIATED FOODS CO OP INC	NORFOLK NE	2	0	2	0	0	0	3,000
GATEWAY FOODS INC	LA CROSSE WI	1	0	0	1	0	0	3,000
UNITED A G STORES	OMAHA NE	1	0	1	0	0	0	1,500
COUNTY TOTAL:		4	0	3	1	0	0	7,500
<b>TURNER</b>								
AFFILIATED FOODS CO OP INC	NORFOLK NE	1	1	0	0	0	0	750
M AND J R HAKES	LAURENS IA	2	2	0	0	0	0	1,500
NASH-FINCH CO	SIOUX FALLS SD	4	3	1	0	0	0	3,750
COUNTY TOTAL:		7	6	1	0	0	0	6,000
<b>UNION</b>								
GATEWAY FOODS INC	LA CROSSE WI	1	1	0	0	0	0	750
NASH-FINCH CO	SIOUX FALLS SD	1	0	1	0	0	0	1,500
COUNTY TOTAL:		2	1	1	0	0	0	2,250
<b>WALNORTH</b>								
NASH-FINCH CO	ABERDEEN SD	1	0	1	0	0	0	1,500
RED OWL FOOD STORES INC	HOPKINS MN	1	1	0	0	0	0	750
SUPER VALU STORES INC	BISMARCK ND	2	0	2	0	0	0	3,000
COUNTY TOTAL:		4	1	3	0	0	0	5,250
<b>YANKTON</b>								
AFFILIATED FOODS CO OP INC	NORFOLK NE	1	1	0	0	0	0	750
BOOGART SUPPLY CO	CONCORDIA KS	1	0	0	1	0	0	3,000
HINKY DINKY STORES	OMAHA NE	1	0	0	0	1	0	7,000
SUPER VALU STORES INC	DES MOINES IA	2	0	0	1	1	0	8,000
COUNTY TOTAL:		5	1	0	2	2	0	18,750
SD STATE TOTAL:		221	84	49	53	23	12	557,500

## COUNTY SUPPLIERS

REGION 08  
STATE: UT

## BEAVER

		TOTAL STORES	500K- 1 MIL	1-2 MIL	2-4 MIL	4-8 MIL	8+ MIL	EST ACV (\$1000)
ASSOCIATED FOOD STORES INC	SALT LAKE CITY UT	3	1	1	1	0	0	5,250
COUNTY TOTAL:		3	1	1	1	0	0	5,250

## BOX ELDER

ALBERTSONS INC	SALT LAKE CITY UT	1	0	0	0	1	0	7,000
ASSOCIATED FOOD STORES INC	SALT LAKE CITY UT	2	0	1	1	0	0	4,500
SAFEMAY STORES INC	SALT LAKE CITY UT	2	0	0	2	0	0	6,000
SMITHS MANAGEMENT CORP	LAYTON UT	2	0	0	2	0	0	6,000
COUNTY TOTAL:		7	0	1	5	1	0	23,500

## CACHE

ALBERTSONS INC	SALT LAKE CITY UT	1	0	0	0	0	1	10,000
ASSOCIATED FOOD STORES INC	SALT LAKE CITY UT	2	0	1	0	0	1	11,500
SAFEMAY STORES INC	SALT LAKE CITY UT	1	0	0	0	0	1	10,000
SMITHS MANAGEMENT CORP	LAYTON UT	2	0	0	0	1	1	17,000
COUNTY TOTAL:		6	0	1	0	1	4	48,500

## CARBON

AMERICAN STREVELL CO	SALT LAKE CITY UT	1	0	0	0	1	0	5,000
ASSOCIATED FOOD STORES INC	SALT LAKE CITY UT	3	2	0	1	0	0	4,500
CITY MARKETS INC	GRAND JUNCTION CO	1	0	0	0	1	0	7,000
SAFEMAY STORES INC	SALT LAKE CITY UT	1	0	0	1	0	0	3,000
SMITHS MANAGEMENT CORP	LAYTON UT	1	0	0	0	1	0	7,000
COUNTY TOTAL:		7	2	0	2	3	0	26,500

## DAVIS

ALBERTSONS INC	SALT LAKE CITY UT	4	0	0	2	1	1	21,000
AMERICAN STORES CO	SALT LAKE CITY UT	2	0	0	0	1	1	20,000
ASSOCIATED FOOD STORES INC	SALT LAKE CITY UT	7	0	0	3	3	1	39,000
ASSOCIATED FOOD STORES INC HQ	SALT LAKE CITY UT	1	0	0	0	1	0	5,000
MILITARY	BUY DIRECT	1	0	0	0	0	1	15,000
SAFEMAY STORES INC	SALT LAKE CITY UT	2	0	0	1	0	1	18,000
SMITHS MANAGEMENT CORP	LAYTON UT	2	0	0	1	0	1	13,000
COUNTY TOTAL:		19	0	0	7	6	6	131,000

## DUCHESENE

AMERICAN STREVELL CO	SALT LAKE CITY UT	1	1	0	0	0	0	750
ASSOCIATED FOOD STORES INC	SALT LAKE CITY UT	4	1	3	0	0	0	5,250
MILITARY	BUY DIRECT	1	0	1	0	0	0	1,500
SAFEMAY STORES INC	SALT LAKE CITY UT	1	0	0	0	1	0	5,000
COUNTY TOTAL:		7	2	4	0	1	0	12,500

## EMERY

AMERICAN STREVELL CO	SALT LAKE CITY UT	1	1	0	0	0	0	750
ASSOCIATED FOOD STORES INC	SALT LAKE CITY UT	2	1	1	0	0	0	2,250
COUNTY TOTAL:		3	2	1	0	0	0	3,000

## GARFIELD

ASSOCIATED FOOD STORES INC	SALT LAKE CITY UT	1	0	0	1	0	0	3,000
COUNTY TOTAL:		1	0	0	1	0	0	3,000

## GRAND

AMERICAN STREVELL CO	SALT LAKE CITY UT	3	1	0	2	0	0	6,750
ASSOCIATED FOOD STORES INC	SALT LAKE CITY UT	1	1	0	0	0	0	750
CITY MARKETS INC	GRAND JUNCTION CO	1	0	0	0	1	0	5,000
COUNTY TOTAL:		5	2	0	2	1	0	12,500

## IPON

ALBERTSONS INC	SALT LAKE CITY UT	1	0	0	0	1	0	5,000
ASSOCIATED FOOD STORES INC	SALT LAKE CITY UT	2	1	0	0	1	0	5,750
SAFEMAY STORES INC	SALT LAKE CITY UT	1	0	0	0	1	0	5,000
COUNTY TOTAL:		4	1	0	0	3	0	15,750

COUNTY SUPPLIERS		TOTAL	500K-	1-2	2-4	4-8	8+	EST ACV
REGION 03, STATE UT (CONTINUED)		STORES	1 MIL	MIL	MIL	MIL	MIL	(\$1000)
<b>JUAB</b>								
ASSOCIATED FOOD STORES INC	SALT LAKE CITY UT	1	0	0	1	0	0	3,000
COUNTY TOTAL:		1	0	0	1	0	0	3,000
<b>KANE</b>								
ASSOCIATED FOOD STORES INC	SALT LAKE CITY UT	2	1	1	0	0	0	2,250
SMALL SUPPLIERS		1	1	0	0	0	0	750
COUNTY TOTAL:		3	2	1	0	0	0	3,000
<b>MILLARD</b>								
AMERICAN STREVELL CO	SALT LAKE CITY UT	1	0	1	0	0	0	1,500
ASSOCIATED FOOD STORES INC	SALT LAKE CITY UT	2	0	1	1	0	0	4,500
SMALL SUPPLIERS		1	1	0	0	0	0	750
COUNTY TOTAL:		4	1	2	1	0	0	6,750
<b>SALT LAKE</b>								
ALBERTSONS INC	SALT LAKE CITY UT	14	0	0	2	11	1	83,000
AMERICAN STORES CO	SALT LAKE CITY UT	1	0	0	0	1	0	5,000
AMERICAN STREVELL CO	SALT LAKE CITY UT	12	2	1	4	4	1	52,000
ASSOCIATED FOOD STORES INC	SALT LAKE CITY UT	35	5	8	7	8	7	179,750
ASSOCIATED FOOD STORES INC HQ	SALT LAKE CITY UT	2	0	1	1	0	0	4,500
SAFEMAY STORES INC	SALT LAKE CITY UT	17	0	0	2	13	2	113,000
SMITHS MANAGEMENT CORP	LAYTON UT	17	0	0	6	7	4	110,000
COUNTY TOTAL:		98	7	10	22	44	15	555,250
<b>SAN JUAN</b>								
ASSOCIATED FOOD STORES INC	SALT LAKE CITY UT	4	0	3	1	0	0	7,500
COUNTY TOTAL:		4	0	3	1	0	0	7,500
<b>SANPETE</b>								
ASSOCIATED FOOD STORES INC	SALT LAKE CITY UT	3	0	2	1	0	0	6,000
SMALL SUPPLIERS		1	0	0	1	0	0	3,000
COUNTY TOTAL:		4	0	2	2	0	0	9,000
<b>SEVIER</b>								
ASSOCIATED FOOD STORES INC	SALT LAKE CITY UT	2	0	0	2	0	0	6,000
SAFEMAY STORES INC	SALT LAKE CITY UT	1	0	0	0	1	0	7,000
SMALL SUPPLIERS		1	0	0	0	1	0	5,000
COUNTY TOTAL:		4	0	0	2	2	0	18,000
<b>SUMMIT</b>								
AMERICAN STORES CO	SALT LAKE CITY UT	1	0	0	0	0	1	15,000
AMERICAN STREVELL CO	SALT LAKE CITY UT	2	1	0	0	1	0	5,750
ASSOCIATED FOOD STORES INC	SALT LAKE CITY UT	1	0	1	0	0	0	1,500
COUNTY TOTAL:		4	1	1	0	1	1	22,250
<b>TOWLE</b>								
ALBERTSONS INC	SALT LAKE CITY UT	1	0	0	1	0	0	3,000
ASSOCIATED FOOD STORES INC	SALT LAKE CITY UT	2	0	1	1	0	0	4,500
SAFEMAY STORES INC	SALT LAKE CITY UT	1	0	0	0	0	1	15,000
COUNTY TOTAL:		4	0	1	2	0	1	22,500
<b>UINTAH</b>								
AMERICAN STREVELL CO	SALT LAKE CITY UT	1	0	0	1	0	0	3,000
ASSOCIATED FOOD STORES INC	SALT LAKE CITY UT	1	0	0	0	1	0	5,000
SAFEMAY STORES INC	SALT LAKE CITY UT	1	0	0	0	1	0	7,000
SMITHS MANAGEMENT CORP	LAYTON UT	1	0	0	0	1	0	5,000
COUNTY TOTAL:		4	0	0	1	3	0	20,000
<b>UTAH</b>								
ALBERTSONS INC	SALT LAKE CITY UT	4	0	0	1	3	0	18,000
AMERICAN STREVELL CO	SALT LAKE CITY UT	11	2	1	6	1	1	38,000
ASSOCIATED FOOD STORES INC	SALT LAKE CITY UT	17	4	4	5	2	2	56,000
SAFEMAY STORES INC	SALT LAKE CITY UT	4	1	0	2	0	1	16,750
SMITHS MANAGEMENT CORP	LAYTON UT	3	0	0	0	2	1	27,000
COUNTY TOTAL:		39	7	5	14	8	5	155,750

## COUNTY SUPPLIERS

REGION 08, STATE UT (CONTINUED)

		TOTAL STORES	500K- 1 MIL	1-2 MIL	2-4 MIL	4-8 MIL	8+ MIL	EST ACV (\$1000)
<b>WASATCH</b>								
ASSOCIATED FOOD STORES INC	SALT LAKE CITY UT	2	1	0	1	0	0	3,750
SAFEWAY STORES INC	SALT LAKE CITY UT	1	0	0	1	0	0	3,000
COUNTY TOTAL:		3	1	0	2	0	0	6,750
<b>WASHINGTON</b>								
ASSOCIATED FOOD STORES INC	SALT LAKE CITY UT	3	0	2	1	0	0	6,000
SAFEWAY STORES INC	SALT LAKE CITY UT	1	0	0	0	1	0	5,000
COUNTY TOTAL:		4	0	2	1	1	0	11,000
<b>WEBER</b>								
ALBERTSONS INC	SALT LAKE CITY UT	3	0	0	0	3	0	17,000
AMERICAN STREVELL CO	SALT LAKE CITY UT	1	1	0	0	0	0	750
ASSOCIATED FOOD STORES INC	SALT LAKE CITY UT	7	1	0	1	2	3	53,750
SAFEWAY STORES INC	SALT LAKE CITY UT	1	0	0	0	1	0	5,000
SMITHS MANAGEMENT CORP	LAYTON UT	6	0	0	1	4	1	33,000
COUNTY TOTAL:		18	2	0	2	10	4	109,500
UT STATE TOTAL:		256	31	35	69	85	36	1,231,750



## COUNTY SUPPLIERS

REGION 08  
STATE: WY

TOTAL STORES	500K- 1 MIL	1-2 MIL	2-4 MIL	4-8 MIL	8+ MIL	EST ACV (\$1000)
-----------------	----------------	------------	------------	------------	-----------	---------------------

## ALBANY

ASSOCIATED GROCERS OF COLORADO	DENVER CO	2	1	0	0	0	1	10,750
BUTTREY FOODS	GREAT FALLS MT	1	0	0	0	0	1	15,000
SAFeway STORES INC	DENVER CO	1	0	0	0	0	1	10,000
WESTERN GROCERS	DENVER CO	2	0	0	0	2	0	10,000
COUNTY TOTAL:		6	1	0	0	2	3	45,750

## BIG HORN

ASSOCIATED FOOD STORES INC	BILLINGS MT	2	0	1	1	0	0	4,500
RYAN GROCERY CO	BILLINGS MT	3	0	0	3	0	0	9,000
SAFeway STORES INC	BUTTE MT	1	0	1	0	0	0	1,500
COUNTY TOTAL:		6	0	2	4	0	0	15,000

## CAMPBELL

ASSOCIATED FOOD STORES INC	BILLINGS MT	1	0	0	1	0	0	3,000
ASSOCIATED GROCERS OF COLORADO	DENVER CO	1	0	0	0	1	0	5,000
ASSOCIATED GROCERS OF NEBRASKA	GERING NE	2	0	0	1	0	1	13,000
BUTTREY FOODS	GREAT FALLS MT	1	0	0	0	0	1	15,000
COUNTY TOTAL:		5	0	0	2	1	2	36,000

## CARBON

ASSOCIATED FOOD STORES INC	BILLINGS MT	1	1	0	0	0	0	750
ASSOCIATED GROCERS OF COLORADO	DENVER CO	3	0	3	0	0	0	4,500
ASSOCIATED GROCERS OF NEBRASKA	GERING NE	1	0	0	0	1	0	5,000
CITY MARKETS INC	GRAND JUNCTION CO	1	0	0	0	0	1	15,000
SAFeway STORES INC	DENVER CO	1	0	0	0	0	1	15,000
SMALL SUPPLIERS		1	0	0	1	0	0	3,000
COUNTY TOTAL:		8	1	3	1	1	2	43,250

## CONVERSE

ASSOCIATED GROCERS OF COLORADO	DENVER CO	2	0	2	0	0	0	3,000
ASSOCIATED GROCERS OF NEBRASKA	GERING NE	3	0	0	1	2	0	13,000
SAFeway STORES INC	DENVER CO	1	0	1	0	0	0	1,500
COUNTY TOTAL:		6	0	3	1	2	0	17,500

## CROOK

ASSOCIATED GROCERS OF COLORADO	DENVER CO	1	0	1	0	0	0	1,500
COUNTY TOTAL:		1	0	1	0	0	0	1,500

## FRENCH

ASSOCIATED FOOD STORES INC	BILLINGS MT	3	1	2	0	0	0	3,750
ASSOCIATED FOOD STORES INC	SALT LAKE CITY UT	1	0	1	0	0	0	1,500
RYAN GROCERY CO	BILLINGS MT	2	0	0	1	0	1	13,000
RYAN MERCANTILE	GREAT FALLS MT	1	0	1	0	0	0	1,500
SAFeway STORES INC	DENVER CO	2	0	0	0	1	1	15,000
COUNTY TOTAL:		9	1	4	1	1	2	34,750

## GOSHEN

ASSOCIATED GROCERS OF NEBRASKA	GERING NE	1	0	0	1	0	0	3,000
NASH-FINCH CO	RAPID CITY SD	1	0	0	1	0	0	3,000
SAFeway STORES INC	DENVER CO	1	0	0	1	0	0	3,000
UNITED A G STORES	OMAHA NE	1	0	1	0	0	0	1,500
SMALL SUPPLIERS		1	0	0	1	0	0	3,000
COUNTY TOTAL:		5	0	1	4	0	0	13,500

## HOT SPRINGS

ASSOCIATED FOOD STORES INC	BILLINGS MT	1	0	0	1	0	0	3,000
RYAN GROCERY CO	BILLINGS MT	1	0	0	1	0	0	3,000
COUNTY TOTAL:		2	0	0	2	0	0	6,000

## JOHNCON

ASSOCIATED FOOD STORES INC	BILLINGS MT	1	0	1	0	0	0	1,500
RYAN GROCERY CO	BILLINGS MT	1	0	0	1	0	0	3,000
SAFeway STORES INC	BUTTE MT	1	1	0	0	0	0	750
COUNTY TOTAL:		3	1	1	1	0	0	5,250

COUNTY SUPPLIERS		TOTAL STORES	500K- 1 MIL	1-2 MIL	2-4 MIL	4-8 MIL	8+ MIL	EST ACV (\$1000)
REGION 08, STATE WY (CONTINUED)								
LARAMIE								
ASSOCIATED GROCERS OF COLORADO	DENVER CO	2	2	0	0	0	0	1,500
ASSOCIATED GROCERS OF NEBRASKA	GERING NE	2	1	1	0	0	0	2,250
BUTTREY FOODS	GREAT FALLS MT	2	0	0	0	0	2	30,000
MILITARY	BUY DIRECT	1	0	0	0	0	1	10,000
SAFEWAY STORES INC	DENVER CO	3	0	0	1	2	0	15,000
WESTERN GROCERS	DENVER CO	3	0	0	1	1	1	18,000
COUNTY TOTAL:		13	3	1	2	3	4	76,750
LINCOLN								
ASSOCIATED FOOD STORES INC	POCATELLO ID	2	2	0	0	0	0	1,500
ASSOCIATED FOOD STORES INC	SALT LAKE CITY UT	2	0	1	1	0	0	4,500
SAFEWAY STORES INC	SALT LAKE CITY UT	1	0	0	1	0	0	3,000
COUNTY TOTAL:		5	2	1	2	0	0	9,000
NATRONA								
ASSOCIATED GROCERS OF COLORADO	DENVER CO	5	2	1	2	0	0	9,000
BUTTREY FOODS	GREAT FALLS MT	2	0	0	0	0	2	25,000
SAFEWAY STORES INC	DENVER CO	2	0	0	0	1	1	20,000
WESTERN GROCERS	DENVER CO	2	0	0	0	0	2	20,000
COUNTY TOTAL:		11	2	1	2	1	5	74,000
NEBRASKA								
ASSOCIATED GROCERS OF NEBRASKA	GERING NE	1	1	0	0	0	0	750
SAFEWAY STORES INC	DENVER CO	1	0	1	0	0	0	1,500
COUNTY TOTAL:		2	1	1	0	0	0	2,250
PARK								
ASSOCIATED FOOD STORES INC	BILLINGS MT	2	0	0	1	1	0	8,000
RYAN GROCERY CO	BILLINGS MT	2	0	0	0	2	0	10,000
SAFEWAY STORES INC	BUTTE MT	1	0	0	1	0	0	3,000
COUNTY TOTAL:		5	0	0	2	3	0	21,000
PLATTE								
ASSOCIATED GROCERS OF NEBRASKA	GERING NE	1	1	0	0	0	0	750
NASH-FINCH CO	RAPID CITY SD	2	0	1	1	0	0	4,500
SAFEWAY STORES INC	DENVER CO	1	0	0	0	0	1	15,000
COUNTY TOTAL:		4	1	1	1	0	1	20,250
SHERIDAN								
ASSOCIATED FOOD STORES INC	BILLINGS MT	4	1	0	2	1	0	11,750
BUTTREY FOODS	GREAT FALLS MT	1	0	0	0	1	0	7,000
RYAN GROCERY CO	BILLINGS MT	2	1	1	0	0	0	2,250
SAFEWAY STORES INC	BUTTE MT	1	0	0	0	0	1	10,000
COUNTY TOTAL:		8	2	1	2	2	1	31,000
SUBLETTE								
AMERICAN STREVELL CO	SALT LAKE CITY UT	2	1	1	0	0	0	2,250
COUNTY TOTAL:		2	1	1	0	0	0	2,250
SWEETWATER								
ALBERTSON'S INC	SALT LAKE CITY UT	1	0	0	0	0	1	10,000
AMERICAN STREVELL CO	SALT LAKE CITY UT	1	0	0	1	0	0	3,000
AMERICAN STREVELL CO HQ	SALT LAKE CITY UT	1	1	0	0	0	0	750
CITY MARKETS INC	GRAND JUNCTION CO	2	0	0	0	0	2	20,000
SAFEWAY STORES INC	SALT LAKE CITY UT	2	0	0	0	1	1	17,000
COUNTY TOTAL:		7	1	0	1	1	4	50,750
TETON								
ASSOCIATED FOOD STORES INC	POCATELLO ID	2	0	1	1	0	0	4,500
SAFEWAY STORES INC	SALT LAKE CITY UT	1	0	0	0	1	0	7,000
SMALL SUPPLIERS		1	1	0	0	0	0	750
COUNTY TOTAL:		4	1	1	1	1	0	12,250

## COUNTY SUPPLIERS

REGION 08, STATE WY (CONTINUED)

		TOTAL STORES	500K- 1 MIL	1-2 MIL	2-4 MIL	4-8 MIL	8+ MIL	EST ACV (\$1000)
<b>UINTA</b>								
AMERICAN STREVELL CO	SALT LAKE CITY UT	1	0	0	0	1	0	5,000
ASSOCIATED FOOD STORES INC	SALT LAKE CITY UT	1	0	0	1	0	0	3,000
SAFEWAY STORES INC	SALT LAKE CITY UT	1	0	0	1	0	0	3,000
COUNTY TOTAL:		3	0	0	2	1	0	11,000
<b>WASHAKIE</b>								
ASSOCIATED FOOD STORES INC	BILLINGS MT	1	0	1	0	0	0	1,500
RYAN GROCERY CO	BILLINGS MT	1	0	0	0	1	0	5,000
SAFEWAY STORES INC	BUTTE MT	1	0	0	1	0	0	3,000
COUNTY TOTAL:		3	0	1	1	1	0	9,500
<b>WESTON</b>								
ASSOCIATED GROCERS OF NEBRASKA	GERING NE	1	0	0	1	0	0	3,000
SAFEWAY STORES INC	DENVER CO	1	0	0	1	0	0	3,000
SUPER VALU STORES INC	BISHARK ND	1	0	1	0	0	0	1,500
COUNTY TOTAL:		3	0	1	2	0	0	7,500
WY STATE TOTAL:		121	18	25	34	20	24	546,000
REGION 08 TOTAL:		1,479	355	309	320	312	183	5,735,750

**END**

**FILMED**

**2-83**

**DTIC**