

MICROCOPY RESOLUTION TEST CHART
NATIONAL BUREAU OF STANDARDS-1963-A

ADA 123555

JOB LANGUAGE PERFORMANCE REQUIREMENTS
FOR 15E
PERSHING MISSILE CREWMAN

REFERENCE SOLDIER'S MANUAL DATED

12 April 1977

Copy available to DTIC does not
permit fully legible reproduction

DTIC
SELECTED
NOV 3 1982

COPY

DTIC FILE COPY

DISTRIBUTION STATEMENT A
Approved for public release
Distribution Unlimited

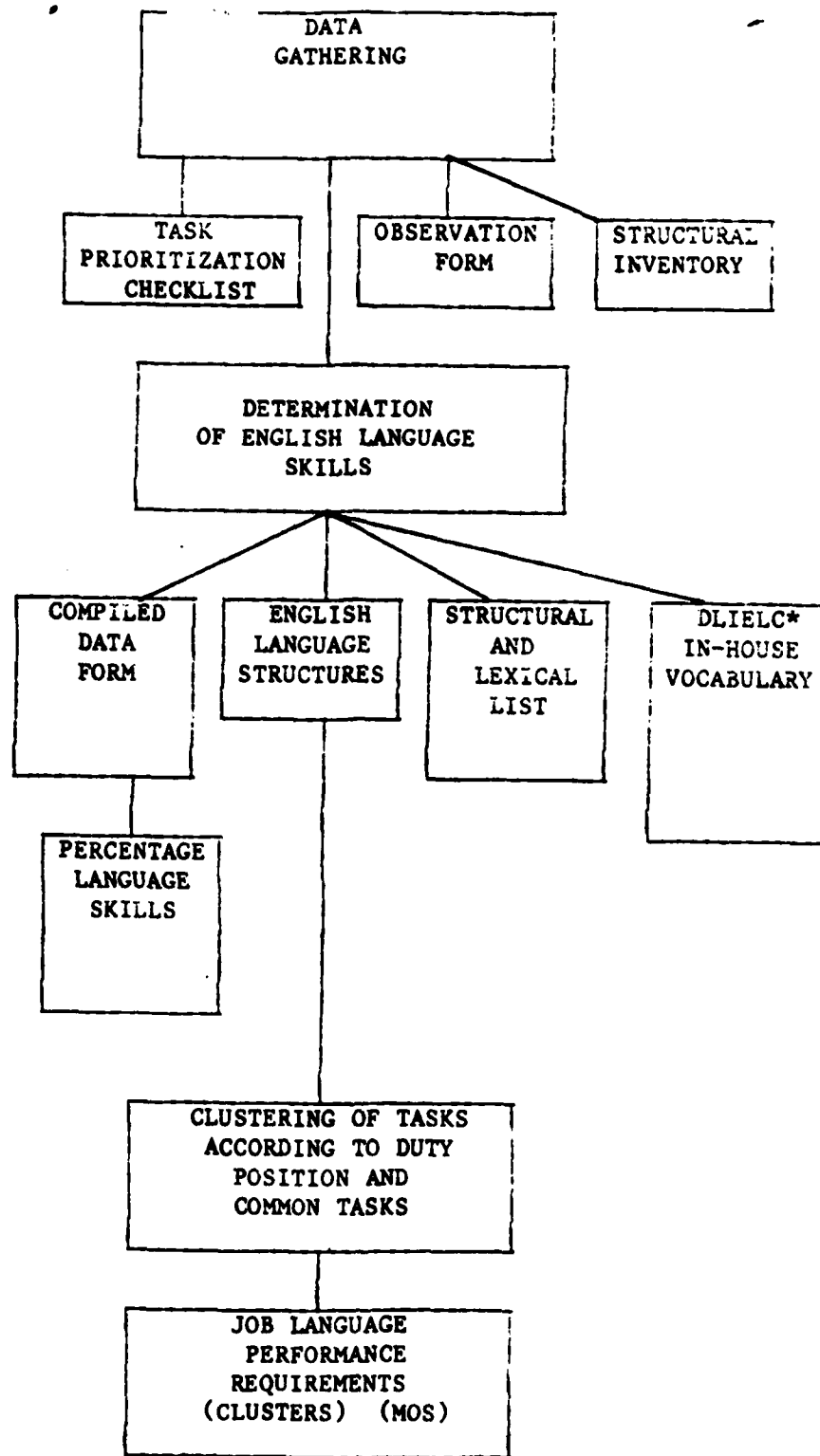


FIGURE 1

*Defense Language Institute English Language Center

DISCLAIMER NOTICE

THIS DOCUMENT IS BEST QUALITY PRACTICABLE. THE COPY FURNISHED TO DTIC CONTAINED A SIGNIFICANT NUMBER OF PAGES WHICH DO NOT REPRODUCE LEGIBLY.

UNCLASSIFIED

SECURITY CLASSIFICATION OF THIS PAGE (When Data Entered)

REPORT DOCUMENTATION PAGE		READ INSTRUCTIONS BEFORE COMPLETING FORM
1. REPORT NUMBER	2. AUTHOR, TITLE, AND SUBTITLE	3. RECIPIENT'S CATALOG NUMBER
	AD-A223555	
4. TITLE (and Subtitle)	5. TYPE OF REPORT & PERIOD COVERED	
Job Language Performance Requirements (JLPR) for Pre-BT Extended Course	Final	
MOS 15E	6. PERFORMING ORG. REPORT NUMBER	
7. AUTHOR(s)	8. CONTRACT OR GRANT NUMBER(s)	
Defense Language Institute-English Language Center		
9. PERFORMING ORGANIZATION NAME AND ADDRESS	10. PROGRAM ELEMENT, PROJECT, TASK AREA & WORK UNIT NUMBERS	
Defense Language Institute-English Language Center ATTN: DLIELC-LEACA Lackland Air Force Base, TX 78236		
11. CONTROLLING OFFICE NAME AND ADDRESS	12. REPORT DATE	
	601 1982	
	13. NUMBER OF PAGES	
	185	
14. MONITORING AGENCY NAME & ADDRESS (if different from Controlling Office)	15. SECURITY CLASS. (of this report)	
Training Developments Institute ATTN: ATTG-DOR Fort Monroe, VA 23651	UNCLASSIFIED	
	15a. DECLASSIFICATION/DOWNGRADING SCHEDULE	
16. DISTRIBUTION STATEMENT (of this Report)		
Approved for public release; distribution unlimited.		
17. DISTRIBUTION STATEMENT (of the abstract entered in Block 20, if different from Report)		
18. SUPPLEMENTARY NOTES		
19. KEY WORDS (Continue on reverse side if necessary and identify by block number)		
Job Language Performance Requirements (JLPR)	Task Inventory	
Lexical Analysis	Common Tasks	
Structural Analysis	Listening	
English Language Skills	Speaking	
Task Prioritization Checklist	Reading	
20. ABSTRACT (Continue on reverse side if necessary and identify by block number)		
<p>The Job Language Performance Requirements (JLPR) study was conducted to determine language tasks the soldier must do in studying/performing job tasks. The language skills (listening, reading, writing, speaking) required to learn each Army job task were identified, conditions studied and standards determined. The data that generated the JLPR is identified.</p>		

CONTENTS

	PREFACE	iii-iv
SECTION I	<u>DATA GATHERING</u>	1-1
	Methods Forms Summary/Conclusion	
SECTION II	<u>DETERMINATION OF ENGLISH LANGUAGE SKILLS</u>	2-1
	Organization of Data Table of Language Skills Forms Vocabulary Summary/Conclusion	
SECTION III	<u>CLUSTERING OF COMMON AND DUTY POSITION TASKS</u>	3-1
	Explanation Clusters	
SECTION IV	<u>JOB LANGUAGE PERFORMANCE REQUIREMENTS</u>	4-1
	Format Task Explanation of Language Tasks vs MOS Tasks Conditions Standards Summary/Conclusion	
SECTION V	<u>JOB LANGUAGE PERFORMANCE REQUIREMENTS (CLUSTERED)</u>	5-1
	Percentage Language Skills Job Language Performance Requirements Task Numbers Task Names	
SECTION VI	<u>JOB LANGUAGE PERFORMANCE REQUIREMENTS</u> <u>(Entire MOS)</u>	6-1
APPENDICES		
1.	Task Prioritization Checklist	A 1-
2.	Task Inventory Compiled Data Form	A 2-
3.	Percentage Language Skills	A 3-
4.	Observation Forms	A 4-
5.	Structural/Lexical List	A 5-
6.	Vocabulary (DLIELC in-house)	A 6-
7.	Vocabulary (machine-generated)	A 7-
8.	English Language Structures	A 8-

PREFACE

INSTRUCTIONS FOR REVIEW OF JOB LANGUAGE PERFORMANCE REQUIREMENTS

This report is organized in six main sections. Sections I-IV discuss methods, forms and rationale for gathering, organizing and analyzing research data used to develop Job Language Performance Requirements (JLPR). Please look through these sections to get a general understanding of the background underlying the JLPR. Sections V and VI are the major substantive portions of the analysis. They are the results of the analysis and constitute the basis for development of any MOS-oriented English language materials. Section V contains the JLPR by cluster/topic, while Section VI contains the JLPR covering the entire range of clusters/topics.

The appendices, one through eight, contain all the information used to determine the Job Language Performance Requirements. Please write any suggestions or changes directly on the document or attach additional notes, if necessary.

The points covered in the six major sections are supported in greater detail in eight appendices. Below is an overview of these appendices.

Appendix one contains the Task Prioritization Checklist. It was taken to the field to collect the raw data. This form was approved for use by the Department of the Army.

Appendix two contains the Task Inventory Compiled Data Form. It was used to organize data from Unit and AIT respondents.

Appendix three defines the language skills by percentage. This form includes computations of language skills for each task cluster.

Appendix four contains the Observation Form used in the recording of types of listening and speaking skills required, as seen by observers, in the learning and performing of a task. The variety of environmental situations is also included on this form.

Appendix five contains the final list of structural and lexical items found through data gathering and organization.

Appendix six contains the DLIELC in-house vocabulary list. This is a task by task listing of the vocabulary extracted from the Soldier's Manual.

Appendix seven contains the machine-generated vocabulary for this MOS prepared by the United States Army Training and Doctrine Command (TRADOC), Fort Monroe, Virginia.

Appendix eight contains the list of structural and lexical items requisite to this MOS.

Thank you for your cooperation. It is greatly appreciated.

Accession For	
NTIS GRA&I	<input checked="" type="checkbox"/>
DTIC TAB	<input type="checkbox"/>
Unannounced	<input type="checkbox"/>
Justification	
By _____	
Distribution/	
Availability Codes	
Dist	Avail and/or
	Special
A	23



SECTION I

DATA GATHERING

INTRODUCTION

This section discusses the procedures and forms in the gathering of data used to determine the Job Language Performance Requirements for this MOS.

I-2 Blank



SECTION I: DATA GATHERING

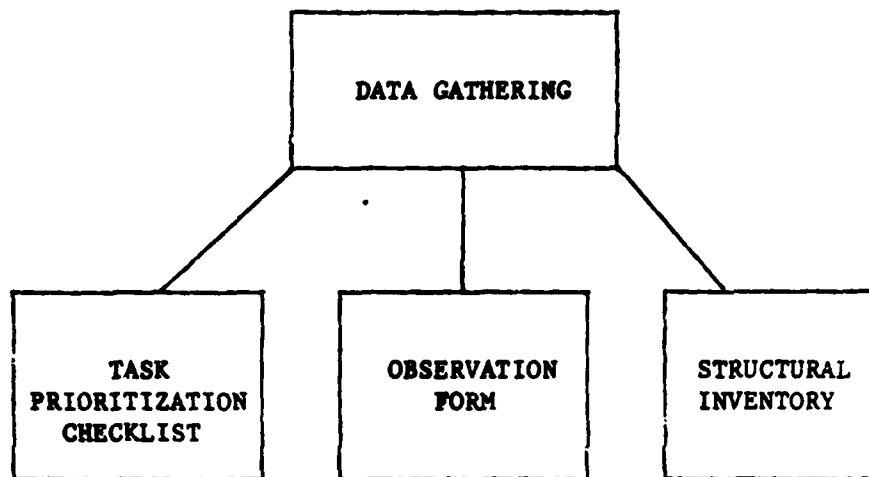


FIGURE 2

In order to establish Job Language Performance Requirements for this MOS the curriculum development specialists at the Defense Language Institute English Language Center (DLIELC) analyzed the current learning and working situations, and individual tasks. The goal was to collect data which would help identify the Job Language Performance Requirements pertinent to this MOS.

To conduct this analysis, training specialists visited the AIT School and Unit cadre. Interviews were conducted using a Task Prioritization Checklist, (Appendix 1). For each task, first-line supervisors answered the following questions:

1. Is the task taught?
2. How is the task taught?
3. Is the task tested?
4. How is the task tested?
5. How important are speaking, listening, reading and writing in learning and performing the task?
6. What are the results of poor performance in performing the task.

Additional data were gathered through use of an Observation Form and an analysis of language structures in the Soldier's Manual for this MOS.

The Observation Form (Appendix 4) was used to record actual observations of the learning situations, populations, tasks, and language.

The lexical and structural analysis was done by a panel of language specialists who first listed all structures found in the Soldier's Manual for this MOS and then all structures, standard and non-standard, noted on the Observation Forms for all vocabulary from the Soldier's Manual. All lists were then combined into an overall lexical and structural inventory.

SUMMARY/CONCLUSION:

The tools for data gathering were:

1. The Task Prioritization Checklist (Appendix 1)
2. The Task Inventory Compiled Data Form (Appendix 2)
3. The Observation Form (Appendix 4)
4. A Structural and Lexical Inventory (consisting of rough drafts of all vocabulary and structures in this MOS).

These tools were used to form the data pool from which the Job Language Requirements were determined.

SECTION II

DETERMINATION OF ENGLISH
LANGUAGE SKILLS

INTRODUCTION

This section discusses the organization of the raw data into information used to determine the English language skills pertinent to this MOS.

II - Blank -

29

SECTION II: DETERMINATION OF ENGLISH LANGUAGE SKILLS

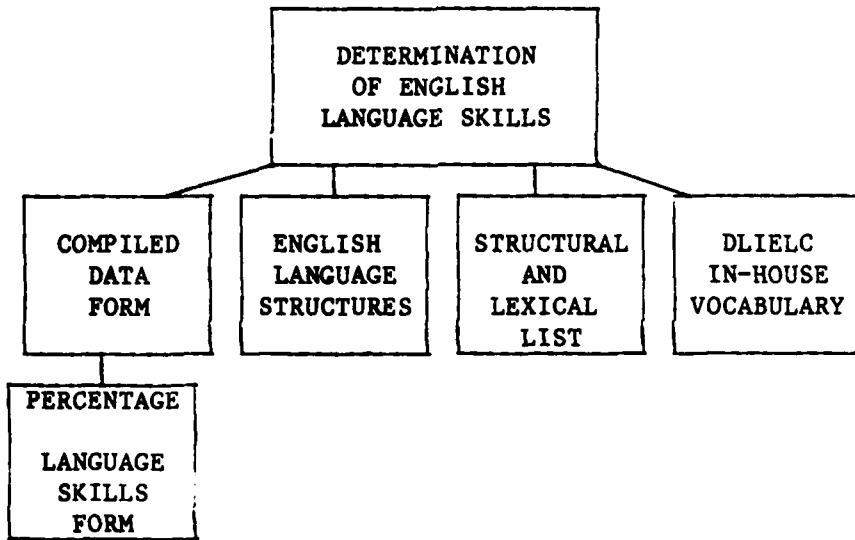


FIGURE 3

The raw data collected as described in Section II above was used to determine the English Language skills which the soldier must learn to learn and perform the task. The Compiled Data Form, Appendix 2, was used to organize the observation and analysis data. Selected information from the Task Prioritization Checklist was recorded directly on this form. Specifically three variables were used to determine the language skills involved. They were:

1. Methods of teaching.
2. Methods of testing.
3. The actual respondents' ratings of the four English language skills.

From each of the three variables the following skills were determined:

VARIABLE	ENGLISH LANGUAGE SKILLS
Methods of Teaching demonstration lecture hands on self-paced	listening, listening, writing listening reading, writing

<p>Methods of Testing performance oral written</p>	<p>listening speaking writing, reading</p>
<p>Rating of English Language Skills listening speaking reading writing</p>	<p>*a response of 2 or 3 on a scale of 1 to 3 was tallied</p> <p>a response of 1, 2, or 3 on a scale of 1 to 5 was tallied</p>

*See A1

In order to determine the relations of the various skills in the MOS, data from the three variables were tallied on the Percentage Language Skills Form. An average was then found using the following formula:

$$TR \div TxVxR = \% \text{ of use}$$

T = total number of tasks per cluster

V = language skill variable per cluster**

R = maximum number of respondents in any task in that cluster

TR = total tally of responses per task per skill

% of use = use of the language skill in the task

Percentages found in this MOS were:

Listening	23%
Speaking	13%
Reading	10%
Writing	11%

As shown by the figures, listening is the most important skill in this MOS. However, in particular duty sections, percentages varied. Appendix 3, the Percentage Language Skills Form, shows the actual skill percentages in each duty position.

**See A3

Organization of structural and lexical items was done by comparing a structural and lexical list extracted from the Soldier's Manual with a structural inventory list extracted from ALC (American Language Center) materials through Volume 2400, at the end of which a trainee is normally qualified for Specialized English Technical Terminology training. By comparing the lists redundancies were eliminated, leaving the final list of structural and lexical items indicated by grammatical title in Appendix 5.

SUMMARY/CONCLUSION:

Organization of the data included the recording of responses on the Task Inventory Compiled Data Form, use of the Percentage Language Skills Form, and the DLIELC in-house structural analysis list. Skills were analyzed by duty section. The actual lexical items in this MOS were grouped and listed task by task. This information was then used to determine the specific Job Language Performance Requirements.

SECTION III

CLUSTERING OF COMMON
AND DUTY POSITION TASKS

INTRODUCTION

Due to the overlapping of certain elements among the various MOS, tasks were clustered in order to prevent duplication of effort for each MOS.

This section contains a listing of the clusters for this MOS.

III-1 Blank

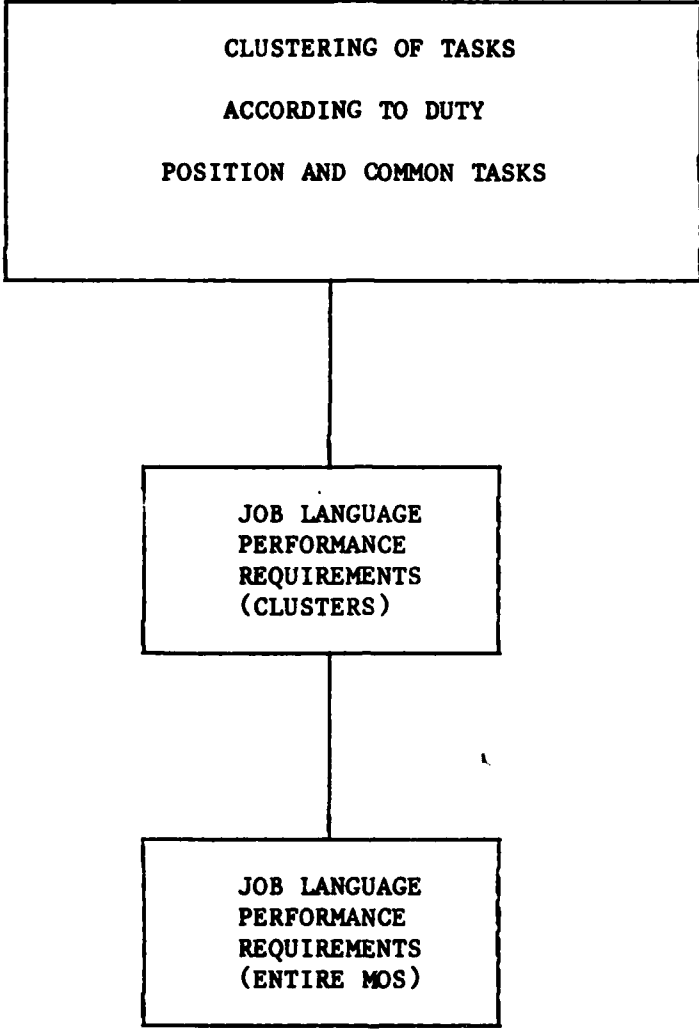


FIGURE 4

SECTION III: CLUSTERING OF COMMON AND DUTY POSITION TASKS

Clustering was done by using the common and duty position tasks in the Soldier's Manual.

The following clusters are in this MOS:

1. FIRST AID
2. NUCLEAR, BIOLOGICAL AND CHEMICAL OPERATIONS
3. BASIC INDIVIDUAL TECHNIQUES
4. CAMOUFLAGE
5. SECURITY AND INTELLIGENCE
6. COMMUNICATIONS
7. LAND NAVIGATION
8. M16A1 RIFLE
9. LIGHT ANTITANK WEAPON (LAW)
10. GRENADES
11. MINES
12. M60 MACHINEGUN
13. PATROLS
14. EMPLACEMENT AND COUNTDOWN
15. ERECTOR-LAUNCHER OPERATOR AND ASSISTANT SECTION CHIEF

SECTION IV

JOB LANGUAGE
PERFORMANCE REQUIREMENTS

INTRODUCTION

This section discusses the format for the Job Language Performance Requirements.

IV-2 Blank



SECTION IV: JOB LANGUAGE PERFORMANCE REQUIREMENTS

The format for the Job Language Performance Requirements is:

TASK:
CONDITION:
STANDARD:

A. TASK

The Job Language Performance Requirements state the language tasks the soldier must do in studying/performing specific MOS job tasks. A task addressing language would be one of reading, listening, speaking or writing. Job tasks, as seen in the Soldier's Manual, are those which pertain to the soldiers duties. To write these as language tasks required the following explanations of what the soldier would speak, read, listen and write. Below are the kinds of explanations that had to be made in this MOS.

SPEAKING

Produces oral utterances to report/inform/explain/elicit response/respond.

Analysis of this MOS indicates verbal reports entailing those activities directly related to the soldiers job tasks.

The speaking act to respond or elicit response in this MOS is an oral response to a command or visual signal.

Speaking to explain involves situations of instruction in any training situation.

Speaking to inform involves producing oral utterances to communicate necessary information.

READING

Read for information/to learn.

Printed and written materials are used throughout this MOS. The soldier is expected to read technical manuals, fields manuals, soldier's manual, written communication and audio-visual aids. Content of these materials is presented in formats and styles ranging from simple factual words or sentences to complex passages containing highly technical vocabulary, often with ellipsis. The purpose is to teach the student, so the student reads them to learn. Reading to learn involves reading names, attributes, information, procedures, explanations of how systems work, concepts, vocabulary terms, and definitions which are committed to short or long term memory for immediate or later recognition.

Basically, the soldier will use these reading materials to supplement what is stated in a lecture by integrating the information from the different texts or written communiques into his understanding of the previous lecture.

The soldier must develop the ability to understand the words in context, to read in thought units, and then select and understand the main ideas. The soldier must retain, apply, and integrate these ideas with past experience to use in his MOS.

Reading to learn, then, is a synthesis. What is read is to be retained in memory for integration in new experiences.

Reading for information, on the other hand, is quite different. The read material is to be retained only in short term memory, used for a specific purpose (i.e., look up a metric equivalent of 37 pounds) and then forgotten.

LISTENING

Listen to oral information to learn/to report.

In this MOS, lecture is a main method of instruction. The lecture is often supplemented by a demonstration. The soldier listens to the lecture to learn data pertinent to the task. Analysis of lecture presentations indicated many language variables. The soldier hears sub-standard usages, various registers of style and formality, colloquialisms, even profanity, in situations ranging from a barracks to a field. The soldier must differentiate between the types of language functions. Is it expression, exchange, description, explanation, argumentation, persuasion, statement, request, or order? The oral information may be directly from the speaker and/or indirectly such as over the telephone, radio, TV, or tape. The soldier must organize and gain meaning from what is heard. Out of all these variables, the soldier must identify or infer the main ideas or major points.

Analysis of this MOS did not and could not specify all types of spontaneous language the soldier would be exposed to. The POI, though, does show the general form of the constrained oral language the soldier must listen to in order to learn the task.

B. CONDITIONS

The condition is what the soldier will be given in order to do the task. For the MOS job, the soldier is given paper, pencil, and printed materials. For language purposes, he will be given certain structural and lexical features as found through the data gathering and organizing from interviews and observations. Again, for the job that the soldier will be given, the material may be under normal working conditions, though other conditions may be added such as with or without protective gear or in darkness.

The soldier will read lists, tables, procedures, checklists or signs, and will hear scenarios, lectures, explanations, and commands. Therefore, these are listed with the Job Language Performance Requirements as possible conditions.

C. STANDARDS

The standard for our purpose is 100%. A standard for understanding or speaking cannot be tested as saying the soldier will disassemble a .45 caliber pistol in eight minutes. Because of this, 100% understandable speech or 100% legibility is used as a reference.

SUMMARY/CONCLUSION:

The Job Language Performance Requirements including tasks, conditions, and standards, were first written for each task cluster. The clusters were then combined into the Job Language Performance Requirements for the entire MOS.

SECTION V

JOB LANGUAGE PERFORMANCE REQUIREMENTS
(CLUSTERED)

INTRODUCTION

Sections I, II, III, and IV described how Job Language Performance Requirements were identified and constructed.

This section contains the Job Language Performance Requirements for each task cluster pertinent to this MOS.

FIRST AID

I. PERCENTAGE LANGUAGE SKILLS

Listening	35%
Speaking	20%
Reading	17%
Writing	19%

II. JOB LANGUAGE PERFORMANCE REQUIREMENTS

TASK:	Listen to learn
CONDITIONS:	Given oral instructions in any training situation (Appendix 4), using standard and non-standard structural and lexical items (Appendices 5 & 7)
STANDARDS:	100% understanding of oral communication
TASK:	Listen to respond
CONDITIONS:	Given a medical scenario involving simple questions about an illness in any training situation (Appendix 4), using standard and non-standard structural and lexical items (Appendices 5 & 7)
STANDARDS:	100% understanding of oral utterances
TASK:	Produce oral utterances to explain
CONDITIONS:	Given a simple medical scenario requiring an oral interpretation in any training situation (Appendix 4), using standard and non-standard structural and lexical items (Appendices 5 & 7)
STANDARDS:	100% understandable oral communication
TASK:	Produce appropriate oral responses spontaneously or upon request
CONDITIONS:	Given any verbal stimulus in the form of questions, scenarios or instructions in any training situation (Appendix 4), using standard and non-standard structural and lexical items (Appendices 5 & 7)
STANDARDS:	100% understandable oral responses
TASK:	Read for information
CONDITIONS:	Given printed MOS training materials in the form of captioned illustrations, procedures, tables and explanations
STANDARDS:	100% understanding of printed content

III. TASK NUMBERS AND TITLES

061-15E-0001	Inspect a Casualty to Determine the First Aid Measures to be Applied
061-15E-0002	Clear and Maintain the Airway of a Casualty
061-15E-0003	Restore Breathing and Heartbeat by Mouth-to-Mouth resuscitation and External Heart Massage
061-15E-0004	Stop the Bleeding of a Wound by Direct Pressure

061-15E-0005 Stop the Bleeding of a Wound by Applying a Tourniquet
061-15E-0006 Protect the Wound(s) of a Casualty
061-15E-0007 Treat a Casualty for Shock
061-15E-0016 Apply First Aid for Electrical Shock
061-15E-0020 Apply Preventive Measures to Reduce Cold, Wet, and Hot
Weather Injury

NUCLEAR, BIOLOGICAL AND CHEMICAL OPERATIONS

I. PERCENTAGE LANGUAGE SKILLS

Listening	6%
Speaking	3%
Reading	4%
Writing	3%

II. JOB LANGUAGE PERFORMANCE REQUIREMENTS

TASK: Listen to learn
CONDITIONS: Given oral instructions in any training situation (Appendix 4), using standard and non-standard structural and lexical items (Appendices 5 & 7)
STANDARDS: 100% understanding of oral communication

TASK: Listen to perform
CONDITIONS: Given oral warnings or verbal commands regarding simulated NBC situations (scenarios) in any training situation (Appendix 4), using standard and non-standard structural and lexical items (Appendices 5 & 7).
STANDARDS: 100% understanding of oral utterances

TASK: Produce appropriate oral responses spontaneously or upon request
CONDITIONS: Given any verbal stimulus in the form of questions, scenarios or instructions in any training situation (Appendix 4), using standard and non-standard structural and lexical items (Appendices 5 & 7)
STANDARDS: 100% understandable oral responses

TASK: Produce oral utterances to inform and respond
CONDITIONS: Given NBC situations requiring oral alarms
STANDARDS: 100% understandable oral utterances

TASK: Read to learn
CONDITIONS: Given printed MOS training materials in the form of procedures, captioned illustrations and notations defined as explanations
STANDARDS: 100% understanding of printed content

TASK: Read for information
CONDITIONS: Given printed MOS training materials in the form of procedures, captioned illustrations and notations defined as explanations
STANDARDS: 100% understanding of printed material

TASK: Write to record and report
CONDITIONS: Given a requirement to produce a written report
STANDARDS: 100% understandable and legible written content

III. TASK NUMBERS AND TITLES

061-15E-0031 Apply First Aid Measures to a Chemical Agent Casualty
061-15E-0024 Recognize and Mark NBC Hazards
061-15E-0026 Don a Protective Mask
061-15E-0027 Take Protective Measures Against NBC Hazards
061-15E-0028 Decontaminate Self, Equipment and Supplies After a Chemical
Attack
061-15E-0029 Decontaminate Self, Equipment and Supplies After a
Biological Attack
061-15E-0030 Decontaminate Self, Equipment and Supplies After Nuclear
Fallout

V-6-15E Blank
~~SEP~~

CAMOUFLAGE

I. PERCENTAGE LANGUAGE SKILLS

Listening	40%
Speaking	28%
Reading	22%
Writing	22%

II. JOB LANGUAGE PERFORMANCE REQUIREMENTS

TASK: Listen to learn and perform
CONDITIONS: Given oral instructions in any training situation (Appendix 4), using standard and non-standard structural and lexical items (Appendices 5 & 7)
STANDARDS: 100% understanding of oral communication

TASK: Produce appropriate oral responses spontaneously or upon request
CONDITIONS: Given any verbal stimulus in the form of questions, scenarios or instructions in any training situation (Appendix 4), using standard and non-standard structural and lexical items (Appendices 5 & 7)
STANDARDS: 100% understandable oral responses

TASK: Produce oral utterances to inform
CONDITIONS: Given a requirement to produce a verbal report in any training situation (Appendix 4), using standard and non-standard structural and lexical items (Appendices 5 & 7)
STANDARDS: 100% understandable oral utterances

TASK: Read for information
CONDITIONS: Given printed MOS training materials in the form of instructions, charts, captioned illustrations, explanations and procedures
STANDARDS: 100% understanding of printed content

III. TASK NUMBERS AND TITLES

061-15E-0039 Camouflage Self, Individual Weapons and Equipment

SECURITY AND INTELLIGENCE

I. PERCENTAGE LANGUAGE SKILLS

Listening	22%
Speaking	13%
Reading	10%
Writing	10%

II. JOB LANGUAGE PERFORMANCE REQUIREMENTS

TASK: Listen to learn and perform
CONDITIONS: Given oral instructions in any training situation (Appendix 4), using standard and non-standard structural and lexical items (Appendices 5 & 7)
STANDARDS: 100% understanding of oral communication

TASK: Listen to orally interact
CONDITIONS: Given oral challenges, passwords, and scenarios in any training situation (Appendix 4), using standard and non-standard structural and lexical items (Appendices 5 & 7)
STANDARDS: 100% understanding of oral information

TASK: Produce appropriate oral responses spontaneously or upon request
CONDITIONS: Given any verbal stimulus in the form of questions, scenarios or instructions in any training situation (Appendix 4), using standard and non-standard structural and lexical items (Appendices 5 & 7)
STANDARDS: 100% understandable oral responses

TASK: Produce spontaneous oral utterances to interact
CONDITIONS: Given the requirement to orally respond to challenges, passwords and security situations in any training situation (Appendix 4), using standard and non-standard structural and lexical items (Appendices 5 & 7)
STANDARDS: 100% understandable oral utterances

TASK: Read to learn
CONDITIONS: Given printed MOS training materials in the form of procedures, tables and warnings
STANDARDS: 100% understanding of printed content

TASK: Write to record and report
CONDITIONS: Given the requirement to complete forms and make written reports
STANDARDS: 100% understandable and legible written content

III. TASK NUMBERS AND TITLES

061-15E-0325	Process and Evacuate Known or Suspected Enemy Personnel
061-15E-0323	Report Enemy Information (SALUTE)
061-15E-0337	Identify Personnel Using Challenge and Password

COMMUNICATIONS

I. PERCENTAGE LANGUAGE SKILLS

Listening	23%
Speaking	13%
Reading	9%
Writing	12%

II. JOB LANGUAGE PERFORMANCE REQUIREMENTS

TASK: Listen to learn
CONDITIONS: Given oral instructions in any training situation (Appendix 4), using standard and non-standard structural and lexical items (Appendices 5 & 7)
STANDARDS: 100% understanding of oral utterances

TASK: Listen to perform
CONDITIONS: Given a brief oral message including prowords in any training situation (Appendix 4), using standard and non-standard structural and lexical items (Appendices 5 & 7)
STANDARDS: 100% understanding of oral content

TASK: Produce appropriate oral responses spontaneously or upon request
CONDITIONS: Given any verbal stimulus in the form of questions, scenarios or instructions in any training situation (Appendix 4), using standard and non-standard structural and lexical items (Appendices 5 & 7)
STANDARDS: 100% understandable oral responses

TASK: Produce oral utterances over radiotelephone
CONDITIONS: Given the requirement to orally communicate using the phonetic alphabet in any training situation (Appendix 4), using standard and non-standard structural and lexical items (Appendices 5 & 7)
STANDARDS: 100% understandable oral utterances

TASK: Read to learn
CONDITIONS: Given printed MOS training materials in the form of instructions, captioned illustrations and sample messages using prowords
STANDARDS: 100% understanding of printed content

TASK: Write to record and report
CONDITIONS: Given a requirement to complete communication forms and logs
STANDARDS: 100% understandable and legible written content

III. TASK NUMBERS AND TITLES

061-15E-0201 Install and Operate Field Telephones TA-312/PT
061-15E-0202 Perform Operator Checks and Services on Field Telephone
TA-312/PT
061-15E-0203 Install Communications Wire Lines
061-15E-0204 Communicate Information Over Tactical Wire Lines
061-15E-0205 Perform Operator Maintenance on Communications Wire

LAND NAVIGATION

I. PERCENTAGE LANGUAGE SKILLS

Listening	0%
Speaking	0%
Reading	0%
Writing	0%

II. JOB LANGUAGE PERFORMANCE REQUIREMENTS

TASK: Listen to learn and perform
CONDITIONS: Given oral instructions in any training situation (Appendix 4), using standard and non-standard structural and lexical items (Appendices 5 & 7)
STANDARDS: 100% understanding of oral communication

TASK: Produce appropriate oral responses spontaneously or upon request
CONDITIONS: Given any verbal stimulus in the form of questions, scenarios or instructions in any training situation (Appendix 4), using standard and non-standard structural and lexical items (Appendices 5 & 7)
STANDARDS: 100% understandable oral responses

TASK: Produce oral utterances to inform and respond
CONDITIONS: Given a requirement to produce a verbal report in any training situation (Appendix 4), using standard and non-standard structural and lexical items (Appendices 5 & 7)
STANDARDS: 100% understandable oral utterances

TASK: Read for information
CONDITIONS: Given printed MOS training materials in the form of marked maps, definitions, captioned illustrations, instructions and procedures
STANDARDS: 100% understanding of printed content

TASK: Write to record
CONDITIONS: Given a requirement to record the grid reference
STANDARDS: 100% legible written content

III. TASK NUMBERS AND TITLES

061-15E-0302	Determine the Altitude of a Point Using a Map
061-15E-0304	Measure a Grid Azimuth with an M2 Compass
061-15E-0305	Convert Grid Azimuth to Magnetic Azimuth or Magnetic Azimuth to Grid Azimuth
061-15E-0306	Measure an Azimuth on a Map with a Protractor
061-15E-0307	Measure Ground Distances on a Map
061-15E-0308	Measure Ground Distance by Pacing
061-15E-0309	Locate an Unknown Point on a Map by Intersection
061-15E-0310	Locate an Unknown Point on a Map by Resection

061-15E-0311 Orient A Map Using a Compass
061-15E-0312 Orient a Map by Terrain Association
061-15E-0313 Determine Your Location by Terrain Association
061-15E-0315 Select a Movement Route Using a Map
061-15E-0316 Navigate from One Point to Another Using a Map and Compass
061-15E-0320 Locate a Point on a Map using the Military Grid Reference System

M16A1 RIFLE

I. PERCENTAGE LANGUAGE SKILLS

Listening	36%
Speaking	24%
Reading	17%
Writing	20%

II. JOB LANGUAGE PERFORMANCE REQUIREMENTS

TASK: Listen to learn and perform
CONDITIONS: Given oral instructions or verbal commands in any training situation (Appendix 4), using standard and non-standard structural and lexical items (Appendices 5 & 7)
STANDARDS: 100% understanding of oral communication

TASK: Produce appropriate oral responses spontaneously or upon request
CONDITIONS: Given any verbal stimulus in the form of questions, scenarios or instructions in any training situation (Appendix 4), using standard and non-standard structural and lexical items (Appendices 5 & 7)
STANDARDS: 100% understandable oral responses

TASK: Produce oral utterances to inform and respond
CONDITIONS: Given a requirement to make a verbal report in any training situation (Appendix 4), using standard and non-standard structural and lexical items (Appendices 5 & 7)
STANDARDS: 100% understandable oral utterances

TASK: Read to learn
CONDITIONS: Given printed MOS training materials in the form of procedures, captioned illustrations, warnings and references
STANDARDS: 100% understanding of printed content

TASK: Read for information
CONDITIONS: Given printed MOS training materials in the form of a range card
STANDARDS: 100% understanding of printed content

TASK: Write to record
CONDITIONS: Given a requirement to complete a range card
STANDARDS: 100% understandable and legible written content

TASK: Write to record and report
CONDITIONS: Given a requirement to produce a written report
STANDARDS: 100% understandable and legible written content

III. TASK NUMBERS AND TITLES

061-15E-0701	Load/Unload/Clear an M16A1 Rifle
061-15E-0702	Disassemble/Assemble an M16A1 Rifle
061-15E-0703	Inspect and Maintain an M16A1 Rifle

061-15E-0705 Apply Immediate Action to Reduce a Stoppage in an M16A1
Rifle
061-15E-0707 Battlesight Zero an M16A1 Rifle
061-15E-0708 Engage a Target with an M16A1 Rifle

LIGHT ANTITANK WEAPON (LAW)

I. PERCENTAGE LANGUAGE SKILLS

Listening	20%
Speaking	12%
Reading	5%
Writing	8%

II. JOB LANGUAGE PERFORMANCE REQUIREMENTS

TASK:	Listen to learn and perform
CONDITIONS:	Given oral instructions or verbal commands in any training situation (Appendix 4), using standard and non-standard structural and lexical items (Appendices 5 & 7)
STANDARDS:	100% understanding of oral communication
TASK:	Produce appropriate oral responses spontaneously or upon request
CONDITIONS:	Given any verbal stimulus in the form of questions, scenarios or instructions in any training situation (Appendix 4), using standard and non-standard structural and lexical items (Appendices 5 & 7).
STANDARDS:	100% understandable oral responses
TASK:	Produce oral utterances to inform and respond
CONDITIONS:	Given a requirement to make a verbal report in any training situation (Appendix 4), using standard and non-standard structural and lexical items (Appendices 5 & 7)
STANDARDS:	100% understandable oral utterances
TASK:	Read for information
CONDITIONS:	Given printed MOS training materials in the form of procedures, descriptions, tables and SOPs
STANDARDS:	100% understanding of printed content

III. TASK NUMBERS AND TITLES

061-15E-0724	Prepare an M72A2 LAW for Firing
061-15E-0725	Engage a Stationary Target with an M72A2 LAW
061-15E-0726	Engage a Moving Target with an M72A2 LAW

GRENADES

I. PERCENTAGE LANGUAGE SKILLS

Listening	23%
Speaking	16%
Reading	9%
Writing	10%

II. JOB LANGUAGE PERFORMANCE REQUIREMENTS

TASK:	Listen to learn and perform
CONDITIONS:	Given oral instructions or verbal commands in any training situation (Appendix 4), using standard and non-standard structural and lexical items (Appendices 5 & 7)
STANDARDS:	100% understanding of oral communication
TASK:	Listen for information
CONDITIONS:	Given oral instructions to perform task specific assignments in any training situation (Appendix 4), using standard and non-standard structural and lexical items (Appendices 5 & 7)
STANDARDS:	100% understanding of oral information
TASK:	Produce appropriate oral responses spontaneously or upon request
CONDITIONS:	Given any verbal stimulus in the form of questions, scenarios or instructions in any training situation (Appendix 4), using standard and non-standard structural and lexical items (Appendices 5 & 7)
STANDARDS:	100% understandable oral responses
TASK:	Produce oral utterances to inform and respond
CONDITIONS:	Given a requirement to produce a verbal report in any training situation (Appendix 4), using standard and non-standard structural and lexical items (Appendices 5 & 7)
STANDARDS:	100% understandable oral utterances
TASK:	Read to learn
CONDITIONS:	Given printed MOS training materials in the form of warnings, procedures, definitions, captioned illustrations and references
STANDARDS:	100% understanding of printed content

III. TASK NUMBERS AND TITLES

061-15E-0731	Load/Unload/Clear an M203 Grenade Launcher
061-15E 0732	Engage a Target with an M203 Grenade Launcher
061-15E-0733	Disassemble/Assemble an M203 Grenade Launcher
061-15E-0734	Inspect and Maintain an M203 Grenade Launcher
061-15E-0737	Apply Procedures for Failure to Fire on an M203 Grenade Launcher
061-15E-0742	Engage a Target with Hand Grenades

MINES

I. PERCENTAGE LANGUAGE SKILLS

Listening	27%
Speaking	8%
Reading	0%
Writing	4%

II. JOB LANGUAGE PERFORMANCE REQUIREMENTS

TASK: Listen to learn
CONDITIONS: Given oral instructions in any training situation (Appendix 4), using standard and non-standard structural and lexical items (Appendices 5 & 7)
STANDARDS: 100% understanding of oral communication

TASK: Produce appropriate oral responses spontaneously or upon request
CONDITIONS: Given any verbal stimulus in the form of questions, scenarios or instructions in any training situation (Appendix 4), using standard and non-standard structural and lexical items (Appendices 5 & 7)
STANDARDS: 100% understandable oral responses

TASK: Produce oral utterances to inform and respond
CONDITIONS: Given a requirement to make a verbal report in any training situation (Appendix 4), using standard and non-standard structural and lexical items (Appendices 5 & 7)
STANDARDS: 100% understandable oral utterances

TASK: Read to learn
CONDITIONS: Given printed MOS training materials in the form of warnings, procedures, definitions, captioned illustrations and references
STANDARDS: 100% understanding of printed content

TASK: Write to inform
CONDITIONS: Given a requirement to mark mine fields
STANDARDS: 100% understandable and legible written communication

III. TASK NUMBERS AND TITLES

061-15E-0740 Install/Fire/Recover a Claymore Mine

M60 MACHINEGUN

I. PERCENTAGE LANGUAGE SKILLS

Listening	0%
Speaking	0%
Reading	1%
Writing	1%

II. JOB LANGUAGE PERFORMANCE REQUIREMENTS

TASK: Listen to learn and perform
CONDITIONS: Given oral instructions or verbal commands in any training situation (Appendix 4), using standard and non-standard structural and lexical items (Appendices 5 & 7)
STANDARDS: 100% understanding of oral communication

TASK: Produce oral utterances to inform and respond
CONDITIONS: Given a requirement to answer in any training situation (Appendix 4), using standard and non-standard structural and lexical items (Appendices 5 & 7)
STANDARDS: 100% understandable oral utterances..

TASK: Produce appropriate oral responses spontaneously or upon request
CONDITIONS: Given any verbal stimulus in the form of questions, scenarios or instructions in any training situation (Appendix 4), using standard and non-standard structural and lexical items (Appendices 5 & 7)
STANDARDS: 100% understandable oral responses

TASK: Read to learn
CONDITIONS: Given printed MOS training materials in the form of requirements, captioned illustrations and labels
STANDARDS: 100% understanding of printed content

TASK: Read for information
CONDITIONS: Given printed MOS training materials in the form of a range card
STANDARDS: 100% understanding of printed content

TASK: Write, to record
CONDITIONS: Given a requirement to complete a range card
STANDARDS: 100% understandable and legible written content

III. TASK NUMBERS AND TITLES

061-15E-0711	Load/Unload/Clear an M60 Machine Gun
061-15E-0713	Apply Immediate Action to Reduce a Stoppage in an M60 Machine Gun
061-15E-0714	Disassemble/Assemble an M60 Machine Gun
061-15E-0715	Inspect and Maintain an M60 Machine Gun

061-15E-0716 Mount/Dismount an M60 Machine Gun on a Tripod
061-15E-0718 Engage a Ground Target with an M60 Machine Gun
061-15E-0720 Engage an Aerial Target with an M60 Machine Gun
061-15E-0338 Prepare a Range Card for a Machine Gun

PATROLS

I. PERCENTAGE LANGUAGE SKILLS

Listening	13%
Speaking	8%
Reading	9%
Writing	10%

II. JOB LANGUAGE PERFORMANCE REQUIREMENTS

TASK:	Listen for information
CONDITIONS:	Given oral instructions to perform task specific assignments in any training situation (Appendix 4), using standard and non-standard structural and lexical items (Appendices 5 & 7)
STANDARDS:	100% understanding of oral information
TASK:	Listen to orally interact
CONDITIONS:	Given oral challenges, passwords and scenarios in any training situation (Appendix 4), using standard and non-standard structural and lexical items (Appendices 5 & 7)
STANDARDS:	100% understanding of oral information
TASK:	Produce oral utterances to inform
CONDITIONS:	Given a requirement to select personnel and make oral reports in any training situation (Appendix 4), using standard and non-standard structural and lexical items (Appendices 5 & 7)
STANDARDS:	100% understandable oral utterances
TASK:	Produce spontaneous oral utterances to interact
CONDITIONS:	Given the requirement to orally respond to challenges, passwords and security situations in any training situation (Appendix 4), using standard and non-standard structural and lexical items (Appendices 5 & 7)
STANDARDS:	100% understandable oral utterances
TASK:	Read for information
CONDITIONS:	Given printed MOS training materials in the form of instructions, explanations and procedures
STANDARDS:	100% understanding of printed content

III. TASK NUMBERS AND TITLES

061-15E-0327	Select Personnel and Equipment for a Patrol
061-15E-0331	Lead a Security Patrol
061-15E-0328	Cross a Danger Area as a Member of a Patrol

EMPLACEMENT AND COUNTDOWN

I. PERCENTAGE LANGUAGE SKILLS

Listening	19%
Speaking	11%
Reading	7%
Writing	7%

II. JOB LANGUAGE PERFORMANCE REQUIREMENTS

TASK:	Listen to learn
CONDITIONS:	Given oral instructions in any training situation (Appendix 4), using standard and non-standard structural and lexical items (Appendices 5 & 7)
STANDARDS:	100% understanding of oral communication
TASK:	Listen to respond
CONDITIONS:	Given a scenario involving simple questions in any training situation (Appendix 4), using standard and non-standard structural and lexical items (Appendices 5 & 7)
STANDARDS:	100% understanding of oral utterances
TASK:	Produce appropriate oral responses spontaneously or upon request
CONDITIONS:	Given any verbal stimulus in the form of questions, scenarios or instructions in any training situation (Appendix 4), using standard and non-standard structural and lexical items (Appendices 5 & 7)
STANDARDS:	100% understandable oral responses
TASK:	Read for information
CONDITIONS:	Given printed MOS training materials in the form of instructions, manuals, explanations and procedures
STANDARDS:	100% understanding of printed content

III. TASK NUMBERS AND TITLES

061-15E-5001	Extend the Missile Propulsion Section from the Container
061-15E-5002	Extend the Guidance Section From the Container
061-15E-5003	Attach the Hoisting Beam to the Missile Section (First Stage, Second Stage, or Guidance Section).
061-15E-5004	Perform Crewman Functions While Installing & Attaching the First Stage to the Azimuth Ring
061-15E-5005	Perform Crewman Functions While Installing & Mating the Second Stage to the First Stage
061-15E-5007	Perform Crewman Functions While Positioning & Mating the Guidance Section to the Second Stage
061-15E-5251	Guide the Erector-Launcher (EL) Over the Firing Point
061-15E-5252	Ground the Erector-Launcher (EL)
061-15E-5253	Eplace the Jack Pads and Lower the Front Jack
061-15E-5254	Disconnect and Connect the Tractor and the Erector-Launcher (EL)

061-15E-5255 Lower the Work Platform and Rotate the Warhead Section Handling Device From the Travel Position

061-15E-5259 Operate the Davit Assembly

061-15E-5010 Perform Crewman Functions While Positioning and Mating the Warhead Section (WS) to the Guidance Section

061-15E-5015 Install a Shaped Charge Retainer Assembly on the Second Stage Missile Section

061-15E-5016 Emplace the Launching Control Group (LCG) and Power Distribution Box (PDB)

061-15E-5017 Lay the 60W18 Cable and Attach the Remote Firing Box (RFB)

061-15E-5018 Assemble and Emplace the Azimuth Reference Unit Shelter Assembly (ARU Tent)

061-15E-5020 Install, Remove, and Store the Guidance Section Heating Blanket

061-15E-5021 Precondition the Guidance Section

061-15E-5026 Emplace, Start, and Shutdown the 45KW Generator

061-15E-5036 Perform Start and Shutdown Procedures on the 10KW Generator

061-15E-5501 Ground the Power Station (PS), Connect Cables and Air Systems

061-15E-5502 Perform Prestart Procedures on the Power Station (PS)

061-15E-5503 Perform Start and Shutdown Procedures on the Power Station (PS)

061-15E-5504 Operate the Power Station (PS) During a Confidence/Standard Count

061-15E-5505 Operate the Power Station (PS) During a Quick Count

061-15E-5506 Refuel the Power Station (PS) During Operation

ERECTOR-LAUNCHER OPERATOR AND ASSISTANT SECTION CHIEF

I. PERCENTAGE LANGUAGE SKILLS

Listening	44%
Speaking	26%
Reading	17%
Writing	20%

II. JOB LANGUAGE PERFORMANCE REQUIREMENTS

TASK:	Listen to learn and perform
CONDITIONS:	Given oral instructions in any training situation (Appendix 4), using standard and non-standard structural and lexical items (Appendices 5 & 7)
STANDARDS:	100% understanding of oral communication
TASK:	Produce oral utterances to inform
CONDITIONS:	Given a requirement to produce a verbal report in any training situation (Appendix 4), using standard and non-standard structural and lexical items (Appendices 5 & 7)
STANDARDS:	100% understandable oral utterances
TASK:	Produce oral utterances to warn
CONDITIONS:	Given a requirement to utter verbal warnings in any training situation (Appendix 4), using standard and non-standard structural and lexical items (Appendices 5 & 7)
STANDARDS:	100% understandable oral utterances
TASK:	Read for information
CONDITIONS:	Given printed MOS training materials in the form of instructions, manuals, tables, explanations and procedures
STANDARDS:	100% understanding of printed content

III. TASK NUMBERS AND TITLES

061-15E-5006	Inspect the Safe and Arm Mechanism or EBW HEFU Case Venting System
061-15E-5008	Direct the Unpackaging and Transfer of the Warhead Section (WS) from the Warhead Container to the Erector-Launcher (EL) Warhead Handling Device
061-15E-5009	Perform Continuity Test of Warhead Section with the T4127A Test Set
061-15E-5012	Supervise the Installation of Initiator on the Rocket Motor Igniter
061-15E-5013	Inspect a Hydraulic Actuator
061-15E-5034	Direct a Quick Count
061-15E-5050	Direct a Confidence/Standard Count
061-15E-5037	Transfer Weight and Remove Hoisting Beams

061-15E-5042 Direct Installation of the First Stage Missile Section on the Erector-Launcher (EL) and Attach the First Stage to the Azimuth Ring Assembly

061-15E-5043 Direct Installation of the Second Stage Missile Section on the Erector-Launcher (EL) and Attach the Second Stage to the First Stage

061-15E-5044 Direct the Mating of the Guidance Section to the Second Stage

061-15E-5045 Direct the Mating of the Warhead Section to the Guidance Section

061-15E-5256 Operate the Erector-Launcher (EL) During a Confidence/Standard Count

061-15E-5257 Operate the Erector-Launcher (EL) During a Quick Count

061-15E-5258 Operate the Erector-Launcher (EL) During Recapture Procedures

061-15E-5019 Enable and Disable the Warhead with the T1500A and T436

SECTION VI

JOB LANGUAGE PERFORMANCE
REQUIREMENTS
(Entire MOS)

INTRODUCTION

This section contains language tasks for each generic skill for this MOS. Listed below each task are the types of receptive or productive language activity involved.

VI-7 Blank

LISTENING

- TASK:** Understand oral language intended to inform or instruct.
- CONDITIONS:** Given explanations, procedures, rules, instructions or definitions in simple to complex lexicon and syntax, formal or informal registers, casual or colloquial speech, military jargon, slang or dialectical speech in any training situation. (Appendices 4, 5 & 6)
- STANDARDS:** 100% understanding and assimilation of presented oral language task.

The following are specific conditions found in this language task:

Warnings
Described situations
Directions
Lectures
Commands, Orders
Sound tracks (films, tapes)
Standard/Non-standard English
Instructions
SQT questions

- TASK:** Understand spontaneous oral language or language via a technical medium - such as a radio telephone - intended to inform and elicit responses.
- CONDITIONS:** Given scenarios, questions, commands or requests in simple to complex lexicon and syntax, formal or informal registers, casual or colloquial speech, military jargon, slang or dialectical speech in any training situation. (Appendices 4, 5, & 6)
- STANDARDS:** 100% understanding and assimilation of oral language in order to apply and respond.

The following are specific conditions found in this language task:

Shouting
Radio communications
Coded messages
Spellings
Conversation
Requests

SPEAKING

- TASK:** Formulate and produce appropriate oral responses spontaneously.
- CONDITIONS:** Given any verbal stimulus in the form of questions, scenarios, instructions, or cues in any training situation.
(Appendices 5 & 6)
- STANDARDS:** 100% understandable oral response using correct lexicon and syntax for the training situation.

The following are specific conditions found in the language task:

Explanations
Statements
Repetitions
Counting
Corrections
Assignments
Notifications
Oral reports
Answers
Clarifications
Information

- TASK:** Produce oral utterances to interact and communicate spontaneously or via a technical medium such as radio telephone.
- CONDITIONS:** Given a communicative situation (Appendices 4, 5, & 6 Soldier's Manual) in any training situation.
- STANDARDS:** 100% understandable communication using correct lexicon and syntax for the communication act.

The following are specific conditions found in this language task:

Requesting information
Requesting permission
Transmitting messages
Call signs
Vocal signals
Shout warnings
Radio communications
Target locations
Directions (N,S,E,W)
Directions, general
Requests for fire
Report on the results of fire
Challenges/Passwords
Training sessions
Interaction

READING

- TASK:** Read MOS training in the form of printed prose or graphic representations in order to learn processes, concepts, vocabulary, definitions and identifications, to calculate problems, intercept codes and complete forms.
- CONDITIONS:** Given technical, non-technical, lexical and structural features in simple to complex printed form in any training situation. (Appendices 4, 5 & 6)
- STANDARDS:** 100% understanding of printed content.

The following are specific conditions found in this language task:
Captions with illustrations.

Lists	Extracts
Procedures	Columns
Information	Indices
Definitions	Charts
Outlines	Methods
Signs	Technical Vocabulary
Markers	Standard Operating Procedures
References	Cartoons
Rules	Problems
Maps	Manuals
Flags	Graphic Training Aids
Military Documents	
I.D. Papers	
Regulations	

- TASK:** Identify, understand, and interpret written utterances pertinent to MOS training in technical or non-technical language.
- CONDITIONS:** Given technical, non-technical, lexical and structural features in simple to complex written form in any training situation. (Appendices 4, 5 & 6)
- STANDARDS:** 100% understanding of written content.

The following are specific conditions found in this language task:

Lists
Information
Descriptions
Radiation readings off dosimeter
Coordinate scales
Callsigns-suffices
Three-letter codes
Examples
Calculations
Markings
Radio communications
Range cards
Notes
Messages

WRITING

TASK: Upon instruction, write in conventional orthography, letter, numbers, words or sentences appropriate to the training situation.

CONDITIONS: Given standardized forms, paper or answer sheets and the instructions to list, answer, describe or recall.

STANDARDS: 100% syntactical and lexical correctness and legibility of writing which is also appropriate in style and usage to training situations. (Appendix 4)

The following are specific conditions found in this language task:

- Ratings
- Signatures
- Range cards
- Data symbols
- Answers
- Descriptions
- Notes
- Reports

TASK: Write, in conventional orthography, letters, or specialized code, numbers, words or sentences in order to transmit or record information.

CONDITIONS: Given standardized forms or paper and oral communication.

STANDARDS: 100% syntactical and lexical correctness of writing which can be read by another speaker of English.

The following are specific conditions found in this language task:

- Technical forms
- Codes
- Grid coordinates
- Decoded messages
- Encoded messages
- Logbooks
- Plottings
- Figures
- Reports
- Tags
- Range cards
- Applicable DA forms

APPENDICES

1. Task Prioritization Checklist
2. Task Inventory Compiled Data Forms
3. Percentage Language Skills
4. Observation Form
5. Structural/Lexical list
6. Vocabulary (DLIELC in-house)
7. Vocabulary (machine-generated)
8. English Language Structures

APPENDIX 1

TASK PRIORITIZATION CHECKLIST

This Checklist was approved by the
Department of the Army in 1980.

YOUR CURRENT MOS: _____
(PRESENTLY IN) (INC IN)

MOS IN WHICH YOU WERE TRAINED: _____
POSITION: _____
UNIT: _____

*RATING: 1=low
2= med
3= high

YES
NO

IS TASK TAUGHT?

IMPORTANCE OF:
LISTENING*
SPEAKING*
READING*
WRITING*

HOW TAUGHT
LECTURE
SELF-PACED
DEMONSTRATION
HANDS-ON

YES
NO

IS TASK TESTED?

HOW TESTED?
WRITTEN
ORAL
PERFORMANCE

HOW PERFORMANC
PERSON DANGER TO
EQUIPMENT RESULTS IN

APPENDIX 2

TASK INVENTORY COMPILED DATA FORM

This form was used to record data from
the Task Prioritization Checklist.

MOS _____ 15E _____ NUMBER OF RESPONDENTS _____

DATA OBTAINED FROM _____ TRAINING SPECIALIST _____

RATING OF ELS	writing																
	reading																
	speaking																
	listening																
METHODS OF TESTING	written																
	oral																
	performance																
METHODS OF TEACHING	self-paced																
	hands-on																
	demonstration																
	lecture																
CRITICALITY	danger to person or equipment																
	importance																
	difficult?																
UNIT	tested?																

MOS _____ NUMBER OF RESPONDENTS _____

DATA OBTAINED FROM _____ TRAINING SPECIALIST _____

RATING OF ELS	writing																
	reading																
	speaking																
	listening																
METHODS OF TESTING	written																
	oral																
	performance																
METHODS OF TEACHING	self-paced																
	hands-on																
	demonstration																
	lecture																
CRITICALITY	danger to person or equipment																
	importance																
	difficulty?																
AIT	tested?																
	taught?																

TASK NUMBER	
	04-155-0029
	04-155-0031
	04-155-0033
	04-155-0035
	04-155-0101
	04-155-0102
	04-155-0103
	04-155-

COMMUNICATIONS 577 & 1476

RATING OF ELS	writing																																			
	reading																																			
METHODS OF TESTING	speaking																																			
	listening																																			
METHODS OF TEACHING	written																																			
	oral																																			
	performance																																			
CRITICALITY	self-paced																																			
	hands-on																																			
	demonstration																																			
	lecture																																			
UNIT	danger to person or equipment																																			
	importance																																			
	difficult?																																			
tested?		NO																																		

RATING OF ELS	writing																																			
	reading																																			
METHODS OF TESTING	speaking																																			
	listening																																			
METHODS OF TEACHING	written																																			
	oral																																			
	performance																																			
CRITICALITY	self-paced																																			
	hands-on																																			
	demonstration																																			
	lecture																																			
AIT	danger to person or equipment																																			
	importance																																			
	difficulty?																																			
tested?																																				
taught?		0	000																																	

TASK NUMBER	
	061-156-0305
	061-156-0307
	061-156-0304
	061-156-0305
	061-156-0306
	061-156-0307
	061-156-0308
	061-156-0309
	061-156-0310

LAND NAV GAZ 7102



PAGE 5 OF 17

MOS 156 NUMBER OF RESPONDENTS

DATA OBTAINED FROM TRAINING SPECIALIST

RATING OF ELS	writing																			
	reading																			
	speaking																			
	listening																			
METHODS OF TESTING	written																			
	oral																			
	performance																			
METHODS OF TEACHING	self-paced																			
	hands-on																			
	demonstration																			
	lecture																			
CRITICALITY	danger to person or equipment																			
	importance																			
	difficult?																			
UNIT	tested?																			
	taught?																			

MOS 156 NUMBER OF RESPONDENTS

DATA OBTAINED FROM TRAINING SPECIALIST

RATING OF ELS	writing																			
	reading																			
	speaking																			
	listening																			
METHODS OF TESTING	written																			
	oral																			
	performance																			
METHODS OF TEACHING	self-paced																			
	hands-on																			
	demonstration																			
	lecture																			
CRITICALITY	danger to person or equipment																			
	importance																			
	difficulty?																			
AIT	tested?																			
	taught?																			
	task number		061-156-0311	061-156-0312	061-156-0313	061-156-0314	061-156-0315	061-156-0316	061-156-0317	061-156-0318	061-156-0319	061-156-0320	061-156-0321	061-156-0322						

061-156-0311 061-156-0312 061-156-0313 061-156-0314 061-156-0315 061-156-0316 061-156-0317 061-156-0318 061-156-0319 061-156-0320 061-156-0321 061-156-0322

RATING OF ELS	writing	reading	speaking	listening
METHODS OF TESTING	written			
	oral			
	performance			
METHODS OF TEACHING	self-paced			
	hands-on			
	demonstration			
	lecture			
CRITICALITY	danger to person or equipment			
	importance			
UNIT	difficult?			
	tested?			

MOS _____ NUMBER OF RESPONDENTS _____
 DATA OBTAINED FROM _____ TRAINING SPECIALIST _____

RATING OF ELS	writing	reading	speaking	listening
METHODS OF TESTING	written			
	oral			
	performance			
METHODS OF TEACHING	self-paced			
	hands-on			
	demonstration			
	lecture			
CRITICALITY	danger to person or equipment			
	importance			
AIT	difficulty?			
	tested?			
	taught?			

TASK NUMBER
061-156-0713
061-156-0714
061-156-0715
061-156-0716
061-156-0717
061-156-0718
061-156-0719

M60
MMS
6 Remedy

MOS 156 NUMBER OF RESPONDENTS _____

DATA OBTAINED FROM _____ TRAINING SPECIALIST _____

RATING OF ELS	writing	reading	speaking	listening
METHODS OF TESTING	written	oral	performance	
METHODS OF TEACHING	self-paced	hands-on	demonstration	lecture
CRITICALITY	danger to person or equipment	importance		
UNIT	difficult?	tested?		

MOS _____ NUMBER OF RESPONDENTS _____

DATA OBTAINED FROM _____ TRAINING SPECIALIST _____

RATING OF ELS	writing	reading	speaking	listening					
METHODS OF TESTING	written	oral	performance						
METHODS OF TEACHING	self-paced	hands-on	demonstration	lecture					
CRITICALITY	danger to person or equipment	importance							
AIT	difficulty?	tested?	taught?						
TASK NUMBER		061-156-0715	061-156-0716	061-156-0718	061-156-0720	061-156-0338	061-156-0327	061-156-0331	061-156-0328

PART 15
061-156-0328

RATING OF ELS	METHODS OF TESTING	METHODS OF TEACHING	CRITICALITY	UNIT	
				danger to person or equipment	importance
writing	written	self-paced	danger to person or equipment	difficult?	tested?
reading	oral	hands-on	importance		
speaking	performance	demonstration			
listening		lecture			

RATING OF ELS	METHODS OF TESTING	METHODS OF TEACHING	CRITICALITY	AIT		
				difficulty?	tested?	taught?
writing	written	self-paced	danger to person or equipment			
reading	oral	hands-on	importance			
speaking	performance	demonstration				
listening		lecture				

TASK NUMBER
061-156-5001
061-156-5002
061-156-5003
061-156-5004
061-156-5005
061-156-5006
061-156-5007
061-156-5008
061-151

EMPLOYEE AND COMPANY

RATING OF ELS	METHODS OF TESTING	METHODS OF TEACHING	CRITICALITY	UNIT	
				danger to person or equipment	importance
writing	written	self-paced	danger to person or equipment	difficult?	tested?
reading	oral	hands-on	importance		
speaking	performance	demonstration			
listening		lecture			

RATING OF ELS	METHODS OF TESTING	METHODS OF TEACHING	CRITICALITY	AIT	
				difficulty?	taught?
writing	written	self-paced	danger to person or equipment	difficulty?	taught?
reading	oral	hands-on	importance		
speaking	performance	demonstration			
listening		lecture			

TASK NUMBER
061-151-5000
061-151-5001
061-151-5006
061-151-5036
061-151-5037
061-151-5009
061-151-5303
061-151-

EMPLOYERS AND COURSES

156

MOS _____ NUMBER OF RESPONDENTS _____

DATA OBTAINED FROM _____ TRAINING SPECIALIST _____

RATING OF ELS	writing																			
	reading																			
	speaking																			
	listening																			
METHODS OF TESTING	written																			
	oral																			
	performance																			
METHODS OF TEACHING	self-paced																			
	hands-on																			
	demonstration																			
	lecture																			
CRITICALITY	danger to person or																			
	equipment																			
	importance																			
UNIT	difficult?																			
	tested?																			

MOS _____ NUMBER OF RESPONDENTS _____

DATA OBTAINED FROM _____ TRAINING SPECIALIST _____

RATING OF ELS	writing																											
	reading																											
	speaking																											
	listening																											
METHODS OF TESTING	written																											
	oral																											
	performance																											
METHODS OF TEACHING	self-paced																											
	hands-on																											
	demonstration																											
	lecture																											
CRITICALITY	danger to person or																											
	equipment																											
	importance																											
AIT	difficulty?																											
	tested?																											
	taught?																											
TASK NUMBER		061-158-5505	061-158-5506	061-158-5006	061-158-5007	061-158-5008	061-158-5009	061-158-5010	061-158-5011	061-158-5012	061-158-5013	061-158-5014	061-158-5015	061-158-5016	061-158-5017	061-158-5018	061-158-5019	061-158-5020	061-158-5021	061-158-5022	061-158-5023	061-158-5024	061-158-5025	061-158-5026	061-158-5027	061-158-5028	061-158-5029	061-158-5030

CECMA NUMBER ON VAD SECOND PART

15E

MOS _____ NUMBER OF RESPONDENTS _____

DATA OBTAINED FROM _____ TRAINING SPECIALIST _____

TASK NUMBER	AIT		CRITICALITY			METHODS OF TEACHING			METHODS OF TESTING			RATING OF ELS					
	taught?	tested?	difficulty?	importance	equipment	danger to person or	lecture	demonstration	hands-on	self-paced	performance	oral	written	listening	speaking	reading	writing
061-15E-5034	1	1	1	1	1	1	1	1	1	1	1	1	1	1	1	1	1
061-15E-5030	1	1	1	1	1	1	1	1	1	1	1	1	1	1	1	1	1
061-15E-5037	1	1	1	1	1	1	1	1	1	1	1	1	1	1	1	1	1
061-15E-5034	1	1	1	1	1	1	1	1	1	1	1	1	1	1	1	1	1
061-15E-5033	1	1	1	1	1	1	1	1	1	1	1	1	1	1	1	1	1
061-15E-5034	1	1	1	1	1	1	1	1	1	1	1	1	1	1	1	1	1
061-15E-5035	1	1	1	1	1	1	1	1	1	1	1	1	1	1	1	1	1
061-15E-5036	1	1	1	1	1	1	1	1	1	1	1	1	1	1	1	1	1
061-15E-5037	1	1	1	1	1	1	1	1	1	1	1	1	1	1	1	1	1
061-15E-5038	1	1	1	1	1	1	1	1	1	1	1	1	1	1	1	1	1

Electrol-Lawson System and Assistant System

156

MOS _____ NUMBER OF RESPONDENTS _____
 DATA OBTAINED FROM _____ TRAINING SPECIALIST _____

RATING OF ELS	writing			<input checked="" type="checkbox"/>	<input type="checkbox"/>	<input type="checkbox"/>	<input type="checkbox"/>	<input type="checkbox"/>	<input type="checkbox"/>	<input type="checkbox"/>
	reading			<input checked="" type="checkbox"/>	<input type="checkbox"/>	<input type="checkbox"/>	<input type="checkbox"/>	<input type="checkbox"/>	<input type="checkbox"/>	<input type="checkbox"/>
	speaking			<input checked="" type="checkbox"/>	<input type="checkbox"/>	<input type="checkbox"/>	<input type="checkbox"/>	<input type="checkbox"/>	<input type="checkbox"/>	<input type="checkbox"/>
	listening			<input checked="" type="checkbox"/>	<input type="checkbox"/>	<input type="checkbox"/>	<input type="checkbox"/>	<input type="checkbox"/>	<input type="checkbox"/>	<input type="checkbox"/>
METHODS OF TESTING	written			<input type="checkbox"/>	<input type="checkbox"/>	<input type="checkbox"/>	<input type="checkbox"/>	<input type="checkbox"/>	<input type="checkbox"/>	<input type="checkbox"/>
	oral			<input checked="" type="checkbox"/>	<input type="checkbox"/>	<input type="checkbox"/>	<input type="checkbox"/>	<input type="checkbox"/>	<input type="checkbox"/>	<input type="checkbox"/>
	performance			<input type="checkbox"/>	<input type="checkbox"/>	<input type="checkbox"/>	<input type="checkbox"/>	<input type="checkbox"/>	<input type="checkbox"/>	<input type="checkbox"/>
METHODS OF TEACHING	self-paced			<input checked="" type="checkbox"/>	<input type="checkbox"/>	<input type="checkbox"/>	<input type="checkbox"/>	<input type="checkbox"/>	<input type="checkbox"/>	<input type="checkbox"/>
	hands-on			<input checked="" type="checkbox"/>	<input type="checkbox"/>	<input type="checkbox"/>	<input type="checkbox"/>	<input type="checkbox"/>	<input type="checkbox"/>	<input type="checkbox"/>
	demonstration			<input checked="" type="checkbox"/>	<input type="checkbox"/>	<input type="checkbox"/>	<input type="checkbox"/>	<input type="checkbox"/>	<input type="checkbox"/>	<input type="checkbox"/>
	lecture			<input type="checkbox"/>	<input type="checkbox"/>	<input type="checkbox"/>	<input type="checkbox"/>	<input type="checkbox"/>	<input type="checkbox"/>	<input type="checkbox"/>
CRITICALITY	danger to person or equipment			<input type="checkbox"/>	<input type="checkbox"/>	<input type="checkbox"/>	<input type="checkbox"/>	<input type="checkbox"/>	<input type="checkbox"/>	<input type="checkbox"/>
	importance			<input type="checkbox"/>	<input type="checkbox"/>	<input type="checkbox"/>	<input type="checkbox"/>	<input type="checkbox"/>	<input type="checkbox"/>	<input type="checkbox"/>
	difficult?			<input type="checkbox"/>	<input type="checkbox"/>	<input type="checkbox"/>	<input type="checkbox"/>	<input type="checkbox"/>	<input type="checkbox"/>	<input type="checkbox"/>
UNIT	tested?			<input type="checkbox"/>	<input type="checkbox"/>	<input type="checkbox"/>	<input type="checkbox"/>	<input type="checkbox"/>	<input type="checkbox"/>	<input type="checkbox"/>

MOS _____ NUMBER OF RESPONDENTS _____
 DATA OBTAINED FROM _____ TRAINING SPECIALIST _____

RATING OF ELS	writing	<input checked="" type="checkbox"/>	<input checked="" type="checkbox"/>	<input checked="" type="checkbox"/>	<input type="checkbox"/>	<input type="checkbox"/>	<input type="checkbox"/>	<input type="checkbox"/>	<input type="checkbox"/>
	reading	<input checked="" type="checkbox"/>	<input checked="" type="checkbox"/>	<input checked="" type="checkbox"/>	<input type="checkbox"/>	<input type="checkbox"/>	<input type="checkbox"/>	<input type="checkbox"/>	<input type="checkbox"/>
	speaking	<input checked="" type="checkbox"/>	<input checked="" type="checkbox"/>	<input checked="" type="checkbox"/>	<input type="checkbox"/>	<input type="checkbox"/>	<input type="checkbox"/>	<input type="checkbox"/>	<input type="checkbox"/>
	listening	<input checked="" type="checkbox"/>	<input checked="" type="checkbox"/>	<input checked="" type="checkbox"/>	<input type="checkbox"/>	<input type="checkbox"/>	<input type="checkbox"/>	<input type="checkbox"/>	<input type="checkbox"/>
METHODS OF TESTING	written	<input type="checkbox"/>	<input type="checkbox"/>	<input type="checkbox"/>	<input type="checkbox"/>	<input type="checkbox"/>	<input type="checkbox"/>	<input type="checkbox"/>	<input type="checkbox"/>
	oral	<input type="checkbox"/>	<input type="checkbox"/>	<input type="checkbox"/>	<input type="checkbox"/>	<input type="checkbox"/>	<input type="checkbox"/>	<input type="checkbox"/>	<input type="checkbox"/>
	performance	<input type="checkbox"/>	<input type="checkbox"/>	<input type="checkbox"/>	<input type="checkbox"/>	<input type="checkbox"/>	<input type="checkbox"/>	<input type="checkbox"/>	<input type="checkbox"/>
METHODS OF TEACHING	self-paced	<input type="checkbox"/>	<input type="checkbox"/>	<input type="checkbox"/>	<input type="checkbox"/>	<input type="checkbox"/>	<input type="checkbox"/>	<input type="checkbox"/>	<input type="checkbox"/>
	hands-on	<input checked="" type="checkbox"/>	<input checked="" type="checkbox"/>	<input checked="" type="checkbox"/>	<input type="checkbox"/>	<input type="checkbox"/>	<input type="checkbox"/>	<input type="checkbox"/>	<input type="checkbox"/>
	demonstration	<input checked="" type="checkbox"/>	<input checked="" type="checkbox"/>	<input checked="" type="checkbox"/>	<input type="checkbox"/>	<input type="checkbox"/>	<input type="checkbox"/>	<input type="checkbox"/>	<input type="checkbox"/>
	lecture	<input checked="" type="checkbox"/>	<input checked="" type="checkbox"/>	<input checked="" type="checkbox"/>	<input type="checkbox"/>	<input type="checkbox"/>	<input type="checkbox"/>	<input type="checkbox"/>	<input type="checkbox"/>
CRITICALITY	danger to person or equipment	<input type="checkbox"/>	<input type="checkbox"/>	<input type="checkbox"/>	<input type="checkbox"/>	<input type="checkbox"/>	<input type="checkbox"/>	<input type="checkbox"/>	<input type="checkbox"/>
	importance	<input type="checkbox"/>	<input type="checkbox"/>	<input type="checkbox"/>	<input type="checkbox"/>	<input type="checkbox"/>	<input type="checkbox"/>	<input type="checkbox"/>	<input type="checkbox"/>
	difficulty?	<input type="checkbox"/>	<input type="checkbox"/>	<input type="checkbox"/>	<input type="checkbox"/>	<input type="checkbox"/>	<input type="checkbox"/>	<input type="checkbox"/>	<input type="checkbox"/>
AIT	tested?	<input type="checkbox"/>	<input type="checkbox"/>	<input type="checkbox"/>	<input type="checkbox"/>	<input type="checkbox"/>	<input type="checkbox"/>	<input type="checkbox"/>	<input type="checkbox"/>
	taught?	<input type="checkbox"/>	<input type="checkbox"/>	<input type="checkbox"/>	<input type="checkbox"/>	<input type="checkbox"/>	<input type="checkbox"/>	<input type="checkbox"/>	<input type="checkbox"/>

TASK NUMBER				
-------------	--	--	--	--

APPENDIX 3

PERCENTAGE LANGUAGE SKILLS

This appendix contains the computations for the percentages of listening, speaking, reading and writing involved in each cluster.

Some clusters have two sets of computations because some Task Prioritization Forms were received after original computations and had to be added on.

A3-2 Blank



PERCENTAGE LANGUAGE SKILLS
MOS 15E

TR = total number of responses to variables in the cluster
 T = number of tasks in the cluster
 V = variables
 R = maximum number of respondents in any task in that cluster

FORMULA	LISTENING	SPEAKING	READING	WRITING
TR + (T)(V)(R) = %	-demonstration -lecture -hands-on -performance (test) -rating (scale)	-oral (test) -rating (scale)	-self-paced -written (test) -rating (scale)	-lecture -self-paced -written (test) -rating (scale)
Cluster	5 = 100%	2 = 100%	3 = 100%	4 = 100%
FIRST AID	$9 \times 5 \times 10 = 450$ $\begin{array}{r} 28 \\ 34 \\ 31 \\ 27 \\ 39 \\ \hline 159 \end{array}$ $450 \overline{) 159.000} \quad .353$	$1 \times 2 \times 10 = 180$ $\begin{array}{r} 11 \\ 25 \\ \hline 36 \end{array}$ $180 \overline{) 36.000} \quad .200$	$7 \times 3 \times 10 = 270$ $\begin{array}{r} 6 \\ 12 \\ 28 \\ \hline 46 \end{array}$ $270 \overline{) 46.000} \quad .170$	$7 \times 4 \times 10 = 360$ $\begin{array}{r} 34 \\ 6 \\ 12 \\ 17 \\ \hline 69 \end{array}$ $360 \overline{) 67.000} \quad .19$
	35%	20%	17%	19%
NBC	$7 \times 5 \times 9 = 315$ $\begin{array}{r} 4 \\ 3 \\ 4 \\ 4 \\ \hline 15 \end{array}$ $315 \overline{) 20.000} \quad .063$	$7 \times 2 \times 9 = 126$ $\begin{array}{r} 1 \\ 3 \\ \hline 4 \end{array}$ $126 \overline{) 4.000} \quad .032$	$7 \times 3 \times 9 = 189$ $\begin{array}{r} 1 \\ 1 \\ \hline 2 \end{array}$ $189 \overline{) 7.000} \quad .037$	$7 \times 4 \times 9 = 252$ $\begin{array}{r} 3 \\ 1 \\ 1 \\ 2 \\ \hline 7 \end{array}$ $252 \overline{) 20.000} \quad .079$
	6%	3%	4%	3%
BASIC INDIVIDUAL	$1 \times 5 \times 9 = 45$ $\begin{array}{r} 2 \\ 3 \\ 2 \\ 2 \\ \hline 9 \end{array}$ $45 \overline{) 14.000} \quad .311$	$1 \times 2 \times 9 = 18$ $\begin{array}{r} 0 \\ 1 \\ \hline 1 \end{array}$ $18 \overline{) 3.000} \quad .167$	$1 \times 3 \times 9 = 27$ $\begin{array}{r} 1 \\ 1 \\ 3 \\ \hline 5 \end{array}$ $27 \overline{) 5.000} \quad .185$	$1 \times 4 \times 9 = 36$ $\begin{array}{r} 2 \\ 1 \\ 1 \\ 2 \\ \hline 6 \end{array}$ $36 \overline{) 19.000} \quad .528$
	31%	17%	19%	17%

**PERCENTAGE LANGUAGE SKILLS
NOS 15E**

TR = total number of responses to variables in the cluster
 T = number of tasks in the cluster
 V = variables
 R = maximum number of respondents in any task in that cluster

FOUR	LISTENING	SPEAKING	READING	WRITING
TR + (T)(V)(R) = %	-demonstration -lecture -hands-on -performance (test) -rating (scale)	-oral (test) -rating (scale)	-self-paced -written (test) -rating (scale)	-lecture -self-paced -written (test) -rating (scale)
Cluster	5 = 100%	2 = 100%	3 = 100%	4 = 100%
CAMOUFLAGE 061-15E-0039	$1 \times 5 \times 9 = 45$ $\frac{3}{4}$ $\frac{4}{4}$ $\frac{3}{4}$ $\frac{4}{18}$ $45 \sqrt{18.000}$ $\frac{.400}{}$	$1 \times 2 \times 9 = 18$ $\frac{1}{4}$ $\frac{5}{5}$ $18 \sqrt{5.000}$ $\frac{.278}{}$	$1 \times 3 \times 9 = 27$ $\frac{1}{1}$ $\frac{4}{6}$ $27 \sqrt{6.000}$ $\frac{.222}{}$	$1 \times 4 \times 9 = 36$ $\frac{4}{1}$ $\frac{1}{1}$ $\frac{2}{8}$ $36 \sqrt{8.000}$ $\frac{.222}{}$
	40%	28%	22%	22%
SECURITY AND INTELLIGENCE 061-15E-0025	$3 \times 5 \times 9 = 135$ $\frac{5}{4}$ $\frac{6}{6}$ $\frac{7}{7}$ $\frac{7}{29}$ $135 \sqrt{29.000}$ $\frac{.215}{}$	$3 \times 2 \times 9 = 54$ $\frac{2}{5}$ $\frac{7}{7}$ $54 \sqrt{7.000}$ $\frac{.130}{}$	$3 \times 3 \times 9 = 81$ $\frac{2}{1}$ $\frac{5}{8}$ $8 \sqrt{8.000}$ $\frac{.099}{}$	$3 \times 4 \times 9 = 108$ $\frac{4}{2}$ $\frac{1}{1}$ $\frac{4}{11}$ $108 \sqrt{11.000}$ $\frac{.102}{}$
	27%	13%	10%	10%
COMMUNICATIONS 061-15E-0201 061-15E-0205	$5 \times 5 \times 8 = 200$ $\frac{6}{10}$ $\frac{11}{11}$ $\frac{8}{11}$ $\frac{11}{46}$ $200 \sqrt{46.000}$ $\frac{.220}{}$	$5 \times 2 \times 8 = 80$ $\frac{2}{8}$ $\frac{10}{10}$ $80 \sqrt{10.000}$ $\frac{.125}{}$	$5 \times 3 \times 8 = 120$ $\frac{1}{3}$ $\frac{7}{11}$ $120 \sqrt{11.000}$ $\frac{.092}{}$	$5 \times 4 \times 8 = 160$ $\frac{10}{1}$ $\frac{3}{3}$ $\frac{2}{19}$ $160 \sqrt{19.000}$ $\frac{.119}{}$
	23%	13%	9%	12%

PERCENTAGE LANGUAGE SKILLS
NOS 15E

FORM A

LISTENING

SPEAKING

READING

WRITING

TR + (T)(V)(R) = %

-demonstration
-lecture
-hands-on
-performance (test)
-rating (scale)

-oral (test)
-rating (scale)

-self-paced
-written (test)
-rating (scale)

-lecture
-self-paced
-written (test)
-rating (scale)

Cluster

5 = 100%

2 = 100%

3 = 100%

4 = 100%

LAND
MANUFACTURING

14x5x0 = 0

14x2x0 = 0

14x3x0 = 0

14x4x0 = 0

0%

0%

0%

0%

MIGAL
RIFLE

6x5x9 = 270

6x2x9 = 108

6x3x9 = 162

6x4x9 = 216

19
17
23 270 $\sqrt{97.000}$.359
15
23
97

11
15
26
108 $\sqrt{26.000}$.241

2
12
14
28
162 $\sqrt{27.000}$.173

17
2
12
13
44
216 $\sqrt{41.000}$.120

36%

21%

17%

20%

LAW

3x5x7 = 105

3x2x7 = 42

3x3x7 = 63

3x4x7 = 84

CB/150-0724
TRAIN

2
4 105 $\sqrt{21.000}$.200
5
5
21

2
3/5
42 $\sqrt{5.000}$.119

0
0
3
63 $\sqrt{37.000}$.048

4
0
0
3
7
84 $\sqrt{27.000}$.093

20%

12%

5%

8%

**PERCENTAGE LANGUAGE SKILLS
MOS 15E**

TR = total number of responses to variables in the cluster
 T = number of tasks in the cluster
 V = variables
 R = maximum number of respondents in any task in that cluster

FORMULA	LISTENING	SPEAKING	READING	WRIT
TR + (T)(V)(R) = %	-demonstration -lecture -hands-on -performance (test) -rating (scale)	-oral (test) -rating (scale)	-self-paced -written (test) -rating (scale)	-lecture -self-paced -written (test) -rating (scale)
Cluster	5 = 100%	2 = 100%	3 = 100%	4 = 100%
GRE-NADIS	6x5x8=240 $\begin{array}{r} 9 \\ 8 \\ 13 \\ 12 \\ 14 \\ \hline 56 \end{array} \quad \begin{array}{r} .233 \\ 240 \overline{)56.000} \end{array}$	6x2x8=96 $\begin{array}{r} 6 \\ 9 \\ \hline 15 \end{array} \quad \begin{array}{r} .156 \\ 96 \overline{)15.000} \end{array}$	6x3x8=144 $\begin{array}{r} 0 \\ 4 \\ 9 \\ \hline 13 \end{array} \quad \begin{array}{r} .090 \\ 144 \overline{)13.000} \end{array}$	6x4x8=192 $\begin{array}{r} 8 \\ 0 \\ 4 \\ 7 \\ \hline 19 \end{array} \quad \begin{array}{r} .099 \\ 192 \overline{)19.000} \end{array}$
	23%	16%	9%	10%
MINES 06-155-0740	1x5x6=30 $\begin{array}{r} 1 \\ 1 \\ 3 \\ 1 \\ 2 \\ \hline 8 \end{array} \quad \begin{array}{r} .267 \\ 30 \overline{)3.000} \end{array}$	1x2x6=12 $\begin{array}{r} 0 \\ 1 \\ \hline 1 \end{array} \quad \begin{array}{r} .083 \\ 12 \overline{)1.000} \end{array}$	1x3x6=18 $\begin{array}{r} 0 \\ 0 \\ 0 \\ \hline 0 \end{array}$	1x4x6=24 $\begin{array}{r} 1 \\ 0 \\ 0 \\ 0 \\ \hline 1 \end{array} \quad \begin{array}{r} .042 \\ 24 \overline{)1.000} \end{array}$
	27%	8%	0%	4%
M60 MACHINE GUN	8x5x5=200 $\begin{array}{r} 0 \\ 0 \\ 0 \\ 0 \\ \hline 0 \end{array}$	8x2x5=80 $\begin{array}{r} 0 \\ 0 \\ \hline 0 \end{array}$	8x3x5=120 $\begin{array}{r} 0 \\ 1 \\ 0 \\ \hline 1 \end{array} \quad \begin{array}{r} .008 \\ 120 \overline{)1.000} \end{array}$	8x4x5=160 $\begin{array}{r} 0 \\ 0 \\ 1 \\ 0 \\ \hline 1 \end{array} \quad \begin{array}{r} .006 \\ 160 \overline{)1.000} \end{array}$
	0%	0%	1%	

PERCENTAGE LANGUAGE SKILLS
MOS 156

TR = total number of responses to variables in the cluster
 T = number of tasks in the cluster
 V = variables
 R = maximum number of respondents in any task in that cluster

FOR	LISTENING	SPEAKING	READING	WRITING
TR + (T)(V)(R) = %	-demonstration -lecture -hands-on -performance (test) -rating (scale)	-oral (test) -rating (scale)	-self-paced -written (test) -rating (scale)	-lecture -self-paced -written (test) -rating (scale)
Cluster	5 = 100%	2 = 100%	3 = 100%	4 = 100%
PATROLS 061-15E-0327 061-15E-0331 061-15E-0378	3x5x6=90 2 2 2 3 3 <u>12</u> 90 $\sqrt{12.000}$.133	3x2x6=36 0 3 <u>3</u> 36 $\sqrt{3.000}$.083	3x3x6=54 0 2 3 <u>5</u> 54 $\sqrt{5.000}$.093	3x4x6=72 2 0 2 3 <u>7</u> 72 $\sqrt{7.000}$.097
	13%	8%	9%	10%
EMPLACEMENT AND COUNTDOWN	27x5x11=1485 57 36 64 63 68 <u>288</u> 1485 $\sqrt{288.000}$.194	27x2x11=594 18 50 <u>68</u> 594 $\sqrt{68.000}$.114	27x3x11=891 9 6 46 <u>61</u> 891 $\sqrt{61.000}$.068	27x4x11=1188 36 9 6 33 <u>84</u> 1188 $\sqrt{84.000}$.071
	19%	11%	7%	7%
ENGINEER- LAUNCHER OPERATOR AND ASSISTANT SECTION CHIEF	16x5x11=880 71 67 90 68 73 <u>389</u> 880 $\sqrt{389.000}$.442	16x2x11=352 15 76 <u>91</u> 352 $\sqrt{91.000}$.259	16x3x11=528 7 23 57 <u>87</u> 528 $\sqrt{87.000}$.165	16x4x11=704 67 7 23 45 <u>142</u> 704 $\sqrt{142.000}$.202
	44%	26%	17%	20%

APPENDIX 4

OBSERVATION FORMS

The attached forms were taken to the actual training where observers recorded actual training situations and language used in the training. These forms were used to indicate the CONDITIONS for the Job Language Performance Requirements in this MOS.

MOS _____

PERSON RECORDING _____

LOCATION
(UNIT/AIT) _____

SUBJECT _____

* TASK NUMBER IF KNOWN _____

Physical Environment of Instruction

- A. Classroom
- B. Open Areas (live firefield- mark-up terrain)
- C. Large enclosed area (bleacher sites)
(Warehouse size)
- D. Other

Styles of Communication Instructor, Verbal orders

Comments:

- A. Formal Speech
- B. Informal Speech
- C. Regional/Ethnic
- D. Body Language
- E. Profanity
- F. Shop talk/slang
- G. Non-standard English
- I. Other

Media of Instruction

- A. Films
- B. Video cassettes
- C. Graphic Training Aids (diagrams, etc....)
- D. Illustrations (requiring reading/not requiring reading)
- E. Maps
- F. Mock-ups
- G. Models/Imitate

Mode of Response

- H. All equipment
- I. Transparencies
- J. Tape cassettes
- K. Training Publications (required/available)
- L. Signs/Notices
- M. P.A. System
- N. Normal Voice
- O. Soldier's Manual
- P. Chalkboard
- Q. Other

- A. Manipulating a piece of equipment/device
- B. Answers (spoken - written)
- C. Signals
- D. Performance
- E. Taking Notes
- F. Teamwork
- G. Other

Comments:

Comments:

Instructional Ratio

- A. Instructor; one-to-one/class
- B. Peer/one-to-one
- C. Group or Committee Group (group of instructors of whom one teaches one portion of the whole)
 - Small (12 or less)
 - Large (more than 12)
- D. er
- E. stions

Comments:

APPENDIX 5

STRUCTURAL/LEXICAL LIST

Attached is the list of
structural and lexical items
for this MOS.
(For discussion, see Section II)

A5. 1. 1. 1.
~~XXXXXXXXXX~~

STRUCTURAL ITEMS

SENTENCE PATTERNS

SIMPLE: One subject and one predicate

1. Subject and action verb
Firer aims.
2. Subject and action verb and direct/indirect object
Many things cause burns.
3. Subject and linking verb and subjective complement
This is very important.

COMPOUND: Two or more sentences joined by:

1. Coordinating conjunction

Explain the task and ask the trainees if they understand the task, and the conditions they are expected to perform at the end of the session, the conditions under which they must operate, and the standard they must achieve.

2. Conjunctive adverb

Do not start or stop the vehicle while the radio is on or you may damage the set.

3. Semicolon

A light pressure is exerted on the driving spring when the bolt is forward; however, never attempt to cock the gun while the backplate is off and the driving spring assembly is in place.

COMPLEX: One or more dependent clauses

1. Adjectival (functions as an adjective by modifying nouns and pronouns)

At the bottom of the map you will find three different bar scales which will help you to change map distance to miles, meters, or yards.

2. Adverbial (functions as an adverb by modifying verbs, adjectives, and other adverbs) The mouth-to-nose method is performed in the same way except you blow into his nose while you pinch his lips closed with one hand.

3. Noun (functions as a noun) The person who is performing artificial respiration quickly blows into the casualty's lungs after each five compressions.

SENTENCE TYPES

1. INTERROGATIVE

(do, does, modal, wh-, tag, inverted)
But what about the other 15 meters?
Ask, "What is there?"

2. DECLARATIVE

Classified information will not be discussed over the telephone.

3. EXCLAMATORY

HALT!

4. IMPERATIVE

Issue the challenge in a soft voice and wait for the (requests, commands, second person (singular/plural, negative/affirmative), First and second person (let's)) stranger to reply with the correct password.

5. ELLIPSIS:

Split the bracket until fire for effect is possible. Most common type of ellipsis--subject deleted

6. FRAGMENT

Movement to occupy a position.
All other parts.

ADVERBIAL CLAUSES

1. PURPOSES

Training must be conducted so that at least 80% of the students can accomplish the task trained to the standards specified for the task.

2. CONTRAST

Although natural terrain features are likely not to change and make good reference points to orient a map, you may also use manmade features such as roads, bridges, etc., to orient your map.

3. COMPARISON

Place suitable material under him as well as over him if necessary.

4. RESULT

Blending is the use of camouflage materials on, over, and around an object so that it appears to be part of the background.

5. MANNER

Take deep breath and place mouth around soldier's mouth; then blow forcefully as you observe his chest.

6. TIME

When you have to go a certain distance on foot without any landmarks to guide you, you can measure distance pretty accurately by counting your paces.

Split the bracket until fire for effect is possible.

7. PLACE

Loosen clothing at neck, waist, and other places where it tends to bind.

8. CAUSE

Be careful not to depress the trigger, since this will cause the firing pin to be released.

9. ADVERSATIVE

The casualty has no fractures, but has a bleeding wound.

10. CONDITION

If it isn't, your rifle can still fire, but it could possibly explode, causing you harm.

PHRASES

1. GERUND

(upon) Hearing the correct password, give permission to pass if you have no other reasons to doubt.

2. PARTICIPIAL

Using a straightedge draw a line between the two objects.

3. INFINITIVE

To camouflage exposed skin paint the shiny areas with a dark color.

4. PREPOSITIONAL

Under certain light conditions, front sight ports can be seen, but you can't determine whether you are looking through, above, or to the side of the rear sight aperture.

LEXICAL ITEMS

ADJECTIVALS

"rifle bore cleaner"
"waste material"
"burning residue"
"semi-fixed ammunition"
"extracting/loading ammunition"
"firing hammer"
"four life-saving steps"
"chest/heart massage"
"tourniquet material"
"field material"
"field condition"
"mouth-to-mouth resuscitation"

ADJECTIVES

1. WORD + ABLE

AVAILABLE

2. COMPARATIVES

Threat main tanks are smaller than the US main battle tanks.

3. SUPERLATIVES

The most dangerous targets are those that see you, have the capability of killing you, and appear to be preparing to engage you.

PRONOUNS

1. INDEFINITE

Have someone walk the FDL (if enemy situation permits), and determine dead space (sections of FDL where individual drops below line of sight).

2. POSSESSIVE

Shake his shoulder and shout, "Are you OK.?"

3. SUBJECTIVE

This will give you correct nomenclature.

4. OBJECTIVE

It will also give you the correct functioning.

5. REFLEXIVE

Keep yourself clear of the muzzle.

VERBS

1. VERB TENSES

Make sure you clearly understand the task you are to teach.

- You will be tested.
- If they elect to take it, they must complete the test once they have begun the first event or else they will receive a NO GO for the entire test.
- If the soldier is breathing, mouth-to-mouth resuscitation is not necessary.
- When all 10 pebbles have been moved to the left pocket, you have traveled one kilometer.
- Have someone walk the FDL and determine dead space.
- Sensing is an instantaneous determination by the grenadier as to where the grenade exploded.

present progressive verb
present verb (uninflected, third
person, indicative)
past tense (regular/irregular)
present perfect
future

2. TYPES

intransitive
(You) train for results.

transitive
Mask the casualty.

linking
The skin becomes inflamed.

3. VOICE

active

recognize
protect
is facing
remove
explode
sounds
points out
seen

appear
seek
secure
wear
mask
stored
do require
could affect

has
must be
wipe
rinse
put brush
empty
reassemble
reinstall

passive

given
is protected
is sprayed

are alerted
are reported
have been corrected

are authorized
be corrected

passive+verb+ing
"task will be performed
using procedures"
modal+passive voice
"can be determined"
modal+negative+passive
"must not be eliminated"

4. MODALS

You must demonstrate, once every 6 months, that you can meet or exceed the minimum level of physical fitness required of each member of your unit in accordance with the standards contained in AR 600-9.

Personnel over the age of 40 may elect not to take the APFT. The pulse should be found in the soft area between the Adam's apple and the large muscle on the side of the neck.

Injury or death could result.

During surveillance the operator will have to adjust the range focus to get a sharp image at different ranges.

"might have to be placed"
"be"
"will be given"
"should be"
"must"
"must be"
"can"
"can be"
"may be"
"should not be"

5. AUXILIARIES

(do, does, negative)

Do not zero in under 100 meters.

If the round does not fall within 5 meters of target, zeroing procedures are called for.

GERUNDS

Sensing is an instantaneous determination by the grenadier as to where the grenade explodes with respect to the target.

INFINITIVES

To fire, hold the M16A1 in the rest with your right shoulder firmly against the weapon's butt plate.

ADVERBS +

1. SUPERLATIVE

When such a line of fire exists, the primary sector will be assigned, based on it, with the FDL being the sector limit closest to the friendly troops.

2. INDEFINITE

The launcher has a heavy coat of oil on working parts, and a light coat of oil elsewhere.

3. FREQUENCY

Apply a little graphite grease to the threads of the antenna section for easy removal and to prevent the sections from seizing if they have been rarely removed.

4. OTHER

Assembly procedure for the grenade launcher merely reverses disassembly steps.

5. COMPARATIVE

The care, cleaning, lubrication and adjustment of the mount used with the gun are no less important.

VERBS AND PREPOSITIONS

Line up the key in the receptacle with the slot in the cable connector.

VERBS AND ADVERB

(particles)

Put on the protective mask within nine seconds of the chemical alarm and remain in the contaminated area for at least two minutes without making further adjustments to the mask.

APPENDIX 6

VOCABULARY (DLIELC IN-HOUSE)

The following vocabulary list was extracted from the Soldier's Manual task by task and then categorized into GENERAL, BASIC AND TECHNICAL vocabulary.

NOT APPLICABLE

REF: On 15 MAY 1981 agreement between
TRADOC and DLIELC was reached
that DLIELC In-House Vocabulary
would not be produced for this
MOS.

APPENDIX 7

Appendix 7 is the machine-generated vocabulary list. It was not useful for our purposes. It is included as a vocabulary reference.

HEADQUARTERS

UNITED STATES ARMY TRAINING AND DOCTRINE COMMAND

FORT MONROE, VIRGINIA 23651

DATA CONTROL NUMBER

Job: / Proj No



SEP 15 1980

MOS USE SKILL 1

DATE 80295 1360 PAGE 1
COUNT4 WORDS4

MOS WORD LISTING/ASCENDING SEQUENCE
COUNT3 WORDS3

COUNT1 WORD1

WORD	COUNT	WORD	COUNT	WORD	COUNT
1 ABOVE	5	12 AC	12	126 A	284
1 ACCOMPLISHED	1	15 ACCORDANCE	15	5 ACCEPT	5
1 ACTION	1	10 ACTIVATING	10	1 ACCUMULATOR	1
4 ACTUATOR	4	10 ADAPTER	10	1 ACTUALLY	1
1 ADJACENT	1	22 ADJUST	22	1 ADEQUATE	2
1 ADJUST	1	54 AIR	54	5 AGAINST	5
1 ADJUST	1	1 ALERT	1	1 AIRHOSE	1
4 ALIGNED	4	4 ALINEMENT	4	12 ALINE	12
1 ALONG	1	1 ALPHA	1	8 ALLOW	8
3 ALWAYS	3	2 ANETER	2	1 ALTER	1
1 A/W/GSA	1	1 AN/GSA-113	1	77 AN	77
3 A/W/GSA	3	11 APPROACH	11	451 AND	451
12 A/W	12	4 AOL	4	1 ANOTHER	1
1 APPLICABLE	1	1 APPLICABLE	1	1 APPARATUS	1
1 APPROACH	1	2 APPROACHES	2	10 APPLY	10
4 APPROXIMATELY	4	1 AR	1	2 APPROXIMATE	2
1 APRES	1	15 ARM	15	11 AREA	11
20 A/W	20	25 AS	25	3 AROUND	3
11 ASSEMBLIES	11	58 ASSEMBLY	58	12 ASSEMBLE	12
13 ASSISTANTS	13	1 ASSISTED	1	27 ASSISTANT	27
21 ATTACK	21	6 ATTACHED	6	6 ATOMIC	6
1 ATTACH	1	1 ATTEMPT	1	1 ATTACHMENT	1
1 ATTACHMENT	1	1 AUX	1	2 AUTIC	2
1 A/W/LP	1	4 A/W	4	3 AVAILABLE	3
102 B	102	4 BACK	4	1 A/W/LI	1
2 BAG	2	4 BAGS	4	22 BAND	22
5 BATTERY	5	4 BARR	4	5 BASE	5
1 BECAME	1	76 BE	76	4 BEA'S	4
2 BELT	2	7 BEEN	7	1 BECAME	1
3 BELT	3	3 BELOW	3	2 BENDING	2
1 BENDER	1	2 BELT	2	2 BEYOND	2
5 BLAST	5	7 BINDERS	7	13 BLANKET	13
2 BLUCKS	2	30 BLASTING	30	1 BLOCK	1
5 BOLT	5	1 BLEW	1	1 BODY	1
4 BOLT	4	6 BOLTS	6	1 BOOTS	1
2 BOLT	2	1 BOTTOM	1	2 BRACKET	2
2 BOLT	2	4 BRACKES	4	16 BREAKER	16
2 BOLT	2	1 BREAKS	1	1 BRIGHTNESS	1
3 BREAKERS	3	1 BROKEN	1	1 BUILDING	1
1 BRINGING	1	3 BROWN	3	4 BURN	4
1 BUMP	1	4 BUT	4	24 BY	24
4 BURNING	4	2 BYPASS	2	54 CABLE	54
3 BY-PASS	3	24 CABLES	24	1 CAM	1
3 CALLET	3	4 CANNOT	4	29 CAP	29
5 CAP	5	4 CAPTIVE	4	1 CARBON	1
2 CAPSCREWS	2	4 CARRYING	4	1 CARTRIDGES	1
7 CAREFULLY	7	1 CASE	1	1 CAUSE	1
5 CASE	5	8 CAUTIONS	8	1 CCH	1
1 CAPTIVE	1				

9 CENTER	4 CENTERED	1 CENTERLINE	1 CENTIMETERS
6 CHAIR	5 CHAIRS	1 CHAMBER	1 CHANGE
3 CHAIRMAN	1 CHAP	51 CHAPTER	27 CHANGE
1 CHARGES	4 CHARGING	9 CHECK	4 CHECKS
3 CHIEF	19 CHECKED	1 CHECKED	2 CHUCKS
12 CHORE	2 CIRCUITS	1 CIRCUITRY	1 CIRCUITS
6 CLEAR	3 CLEANS	5 CLEAN	1 CLEANING
1 CLIPPING	5 CLEARANCE	2 CLEARED	5 CLIP
3 CLOSED	5 CLIPS	12 CLOCKWISE	10 CLOSE
2 CLOCKS	3 CLOTHING	11 CMA	1 COARSE
1 COLLEY	1 CODE	2 COINCIDE	1 COLD
5 COMPLETE	1 COMBUSTION	1 COPE	1 COILING
2 COMPLETELY	5 COMPONENTS	1 COMPUTED	1 COINCIDENTAL
2 COMPLETELY	3 COMBUSTIONED-AIR	5 CONDITIONER	41 CONDITIONS
2 CONFERENCE/STANDARD	1 CONDUCT	1 CONFIG	6 CONFIDENCE
12 CONNECTED	5 CONFIGURATION	2 CONFIGURATIONS	44 CONNECT
14 CONNECTOR	3 CONNECTION	5 CONNECTIONS	7 CONNECTIONS
2 CONTACT	3 CONNECTORS	1 CONSIDERED	1 CONSISTING
43 CONTACTS	1 CONTAMINATION	44 CONTAINER	1 CONTAINERS
20 CORE	3 COOL	1 CONTINUE	4 CONTINUITY
6 CORROSION	19 CORRECT	1 CORBLANT	1 COOLING
6 CORROSION	1 COULD	1 CORRECTION	8 CORRECTLY
6 COUNTERCLOCKWISE	1 COUNTING	12 COUNT	4 COUNTDOWN
4 COUPLING	3 COUPLINGS	25 COVER	2 COUPLER
6 COWERS	2 CRACKED	1 CRACKS	2 COVERING
1 CRAY	8 CREWMAN	2 CREWEN	1 CRADLE
1 CRIPPER	6 CRIMPERS	1 CRIMPING	3 CRIMP
1 CROSSLINE	1 CROSSLINES	1 CROSSMEMBER	3 CROSS
1 CROCKET	1 CUFVES	1 CUSHIONING	6 CUBICLE
1 CRYALAY	2 CUTOUT	1 CUTTER	6 CUT
1 CRYCLE	3 CYCLES	9 CYLINDER	1 CW
13 D	2 DAILY	4 DAMAGE	70 D
5 DAMPER	1 DAVIS	1 DAMAGES	2 DAMAGED
18 DC	1 DEBRIS	1 DECISION	22 DAVIT
1 DELAY	1 DEMOLITION	4 DEMOLITIONS	1 DEENERGIZED
1 DEPARTMENT	8 DEPTH	4 DESIGNATED	2 DENTS
1 DESTROYED	1 DESTROYED	1 DESTROYED	1 DESIGNATING
3 DETERMINE	3 DETONATE	1 DETONATED	1 DESTRUCTION
4 DETONATION	1 DETONATOR	25 DEVICE	28 DETONATING
1 DIESEL	1 DIFFERENCES	1 DIG	1 DIAL
15 DIRECT	12 DIRECTED	6 DIRECTION	1 DIOXIDE
3 DIRT	2 DIRTY	2 DISCARD	1 DIRECTLY
2 DISCONNECTION	2 DISEASABLE	1 DISEASING	15 DISCONNECT
3 DISENGAGED	5 DISTANCE	4 DISTRIBUTION	1 DISENGAGE
22 DS	6 DUES	1 DUESHIT	2 DIVIDE
13 DUR	6 DURNS	3 DUT	3 DUNE
13 DURAN	3 DRIVE	10 DRIVER	2 DUTS
3 DS	4 DUCT	1 DIE	1 DRY
2 DUMPAGE	17 DUFFING	2 DUTIES	2 DUMP
			46 E

2 BUSH	2 ETC	2 ENGAGED/DISENGAGED	2 EYE	2 EFFECTIVE
1 EFFORTS	1 EITY	1 ENTERING	1 EYE	94 EL
1 ELMS	7 ELECTRICAL	1 ENVIRONMENT	1 ELECTRIC	2 ELECTRONIC
4 ELEVATION	18 E-PLACE	1 ERGA	4 EMERGENCY	18 EMPLOYED
2 EMBLEM	2 E-PLACING	3 ERROR	2 EMERGENCY	95 END
1 EMBROIDERED	1 E-PRIGIZED	8 EVACUATE	3 ENDS	5 ENGAGE
1 EMBROIDER	1 E-PRIGES	1 EXERCISE	2 ENGINES	15 ENGINE
1 ENTER	2 E-PRIGING	1 EXPECTED	1 ENTERING	1 ENTANGLED
40 ERY	1 E-TIME	6 EXPLOSIVES	1 ERGA	2 ENTRY
1 EQUIPPED	1 E-VIPORMENTAL	3 EXTENSION	3 ERROR	9 EQUIPMENT
1 ERECTOR-LAUNCHER	8 ERECTOR	1 EXTRACTOR	8 EVACUATE	18 ERECTOR-LAUNCHER
2 ERECTOR	1 ESTABLISHED	1 FACE	1 EXERCISE	2 ETC
1 ERECTOR	1 EVACUATION	1 FACE	1 EXERCISE	1 EXAMPLE
1 ERECTOR	1 EXERCISES	6 FEET	1 EXERCISE	5 EXHAUST
1 ERECTOR	1 EXPEDITENT	3 FIGHT	1 EXERCISE	3 EXPENDABLES
1 ERECTOR	3 EXPOSE	3 FILLED	1 EXERCISE	17 EXTEND
1 ERECTOR	1 EXTINGUISH	2 FINGER	1 EXERCISE	2 EXTINGUISHING
1 ERECTOR	3 EYES	1 FIRED	1 EXERCISE	29 F
1 ERECTOR	1 FACILITATE	14 FIRING	1 EXERCISE	1 FACT
1 ERECTOR	1 FACILITATE	2 FITTING	1 EXERCISE	1 FASTENED
1 ERECTOR	1 FACILITATE	5 FLANGES	1 EXERCISE	7 FIFTH
1 ERECTOR	1 FACILITATE	2 FLAT	1 EXERCISE	56 FIGURE
1 ERECTOR	1 FACILITATE	5 FM	1 EXERCISE	4 FINAL
1 ERECTOR	1 FACILITATE	1 FOLD	1 EXERCISE	40 FIR
1 ERECTOR	1 FACILITATE	1 FOLD	1 EXERCISE	1 FIREMENS
1 ERECTOR	1 FACILITATE	5 FOOT	1 EXERCISE	4 FIRMLY
1 ERECTOR	1 FACILITATE	1 FORWARD	1 EXERCISE	4 FIVE
1 ERECTOR	1 FACILITATE	11 FORWARD	1 EXERCISE	1 FLASHES
1 ERECTOR	1 FACILITATE	19 FRAME	1 EXERCISE	2 FLUID
1 ERECTOR	1 FACILITATE	66 FRON	1 EXERCISE	1 FOCUS
1 ERECTOR	1 FACILITATE	9 FULLY	1 EXERCISE	5 FOLLOWING
1 ERECTOR	1 FACILITATE	23 G	1 EXERCISE	67 FOR
1 ERECTOR	1 FACILITATE	5 GIRTH	1 EXERCISE	15 FORM
1 ERECTOR	1 FACILITATE	3 GIRTH	1 EXERCISE	12 FOUR
1 ERECTOR	1 FACILITATE	1 GU	1 EXERCISE	5 FREE
1 ERECTOR	1 FACILITATE	4 COVERHUR	1 EXERCISE	1 FT
1 ERECTOR	1 FACILITATE	4 GREEN	1 EXERCISE	26 FUSE
1 ERECTOR	1 FACILITATE	2 GRABBED	1 EXERCISE	1 GAIN
1 ERECTOR	1 FACILITATE	44 GUIDANCE	1 EXERCISE	1 GENERATER'S
1 ERECTOR	1 FACILITATE	5 H-416	1 EXERCISE	41 GIVEN
1 ERECTOR	1 FACILITATE	3 HANMER	1 EXERCISE	1 GOOD
1 ERECTOR	1 FACILITATE	2 HANDLES	1 EXERCISE	1 GRASP
1 ERECTOR	1 FACILITATE	4 HANDLE	1 EXERCISE	1 GRUCVED
1 ERECTOR	1 FACILITATE	1 HANDLE	1 EXERCISE	4 GPOLP
1 ERECTOR	1 FACILITATE	1 HANDLE	1 EXERCISE	8 GUIDED
1 ERECTOR	1 FACILITATE	1 HANDLE	1 EXERCISE	5 HALF
1 ERECTOR	1 FACILITATE	1 HANDLE	1 EXERCISE	1 HANDBRAMES
1 ERECTOR	1 FACILITATE	1 HANDLE	1 EXERCISE	1 HANG
1 ERECTOR	1 FACILITATE	1 HANDLE	1 EXERCISE	10 HAVE
1 ERECTOR	1 FACILITATE	1 HANDLE	1 EXERCISE	3 HEADSET

1 HEADSETS	11 MEAT	1 HEAVY
1 HIPS	1 HELP	7 HIGH
1 HITCH	2 HITCH	3 HOIST
13 HOLD	2 HOLDER	2 HOLDING
5 HOLES	3 HOLES	3 HOOK
2 HOOKS	2 HORIZONTAL	2 HOOP
2 HOSES	1 HOUSING	1 HOWLVER
3 HTAS	1 HWD	7 HYDRAULIC
4 H4211B	35 I	10 IAN
45 IF	2 IGHTE	6 IGNITER
3 II	14 III	6 IMAGE
3 IMMEDIATELY	1 IMPROPERLY	141 IN
7 INCHES	1 INCHEC	2 INCLUDE
1 INCREASING	1 INDICATE	1 INDICATED
1 INDICATING	4 INDICATION	2 INDICATIONS
9 INDICATORS	3 INDIVIDUAL	1 INITIATE
2 INLET	10 INNER	40 INF
1 INSERTING	2 INSTEAD	22 INSPECT
25 INSTALL	2 INSTALLATION	2 INSTALLED
1 INSTANT	1 INSTRUMENTS	53 INSURE
40 INT	1 INTAKE	1 INTERCONNECTING
1 INTERSECTS	4 INTERSTAGE	2 INTERVEPIGULAR
1 INTRANSIT	1 INVESTIGATION	1 INVOLVE
1 INVOLVES	4 INVOLVING	97 IS
22 IT	1 ITEM	3 ITEMS
1 ITSELF	1 IV	6 IX
39 JACK	2 JACKS	2 JAWS
75 JUS	1 JUST	4 JI
1 J9	1 J9	6 K
2 KEYWAYS	5 KINGPIN	1 KINKED
1 KITS	3 KTOP	2 KNOT
2 LADDER	1 LANDING	1 LANYARD
40 LAS	5 LASFR	2 LATCH
8 LAUNCHER	4 LAUNCHING	10 LAY
8 LCG	1 LEAD	1 LEADING
8 LEAST	1 LEAVE	7 LEFT
5 LEGS	10 LENGTH	5 LENS
1 LESSEN	15 LEVEL	1 LEVELED
1 LEVELS	12 LEVER	5 LEVERKS
2 LIFTED	7 LIFTING	7 LIGHT
9 LIGHTS	1 LIMIT	23 LINE
10 LINES	2 LINK	1 LIQUID
2 LIT	2 LIVES	17 LOAD
1 LOCAL-REMOTE	1 LOCKED	4 LOCATING
2 LOCKED	1 LOCKING	5 LOCKPIN
1 LOOKING	1 LOCK	2 LOUSE
26 LOWER	1 LOWERED	2 M
5 MADE	19 MAIN	1 MAINTAIN
6 MAKE	1 MAKING	2 MALFUNCTION
1 MANDATORY	36 MANUAL	6 MANUALLY

1 MASTER
 2 MATERIALS
 3 MEASUREMENTS
 4 MECHANISM
 5 METER
 6 METER
 7 METER
 8 METER
 9 METER
 10 METER
 11 METER
 12 METER
 13 METER
 14 METER
 15 METER
 16 METER
 17 METER
 18 METER
 19 METER
 20 METER
 21 METER
 22 METER
 23 METER
 24 METER
 25 METER
 26 METER
 27 METER
 28 METER
 29 METER
 30 METER
 31 METER
 32 METER
 33 METER
 34 METER
 35 METER
 36 METER
 37 METER
 38 METER
 39 METER
 40 METER
 41 METER
 42 METER
 43 METER
 44 METER
 45 METER
 46 METER
 47 METER
 48 METER
 49 METER
 50 METER
 51 METER
 52 METER
 53 METER
 54 METER
 55 METER
 56 METER
 57 METER
 58 METER
 59 METER
 60 METER
 61 METER
 62 METER
 63 METER
 64 METER
 65 METER
 66 METER
 67 METER
 68 METER
 69 METER
 70 METER
 71 METER
 72 METER
 73 METER
 74 METER
 75 METER
 76 METER
 77 METER
 78 METER
 79 METER
 80 METER
 81 METER
 82 METER
 83 METER
 84 METER
 85 METER
 86 METER
 87 METER
 88 METER
 89 METER
 90 METER
 91 METER
 92 METER
 93 METER
 94 METER
 95 METER
 96 METER
 97 METER
 98 METER
 99 METER
 100 METER

1 MARK
 2 MARK
 3 MARK
 4 MARK
 5 MARK
 6 MARK
 7 MARK
 8 MARK
 9 MARK
 10 MARK
 11 MARK
 12 MARK
 13 MARK
 14 MARK
 15 MARK
 16 MARK
 17 MARK
 18 MARK
 19 MARK
 20 MARK
 21 MARK
 22 MARK
 23 MARK
 24 MARK
 25 MARK
 26 MARK
 27 MARK
 28 MARK
 29 MARK
 30 MARK
 31 MARK
 32 MARK
 33 MARK
 34 MARK
 35 MARK
 36 MARK
 37 MARK
 38 MARK
 39 MARK
 40 MARK
 41 MARK
 42 MARK
 43 MARK
 44 MARK
 45 MARK
 46 MARK
 47 MARK
 48 MARK
 49 MARK
 50 MARK
 51 MARK
 52 MARK
 53 MARK
 54 MARK
 55 MARK
 56 MARK
 57 MARK
 58 MARK
 59 MARK
 60 MARK
 61 MARK
 62 MARK
 63 MARK
 64 MARK
 65 MARK
 66 MARK
 67 MARK
 68 MARK
 69 MARK
 70 MARK
 71 MARK
 72 MARK
 73 MARK
 74 MARK
 75 MARK
 76 MARK
 77 MARK
 78 MARK
 79 MARK
 80 MARK
 81 MARK
 82 MARK
 83 MARK
 84 MARK
 85 MARK
 86 MARK
 87 MARK
 88 MARK
 89 MARK
 90 MARK
 91 MARK
 92 MARK
 93 MARK
 94 MARK
 95 MARK
 96 MARK
 97 MARK
 98 MARK
 99 MARK
 100 MARK

1 MARKER
 2 MARKER
 3 MARKER
 4 MARKER
 5 MARKER
 6 MARKER
 7 MARKER
 8 MARKER
 9 MARKER
 10 MARKER
 11 MARKER
 12 MARKER
 13 MARKER
 14 MARKER
 15 MARKER
 16 MARKER
 17 MARKER
 18 MARKER
 19 MARKER
 20 MARKER
 21 MARKER
 22 MARKER
 23 MARKER
 24 MARKER
 25 MARKER
 26 MARKER
 27 MARKER
 28 MARKER
 29 MARKER
 30 MARKER
 31 MARKER
 32 MARKER
 33 MARKER
 34 MARKER
 35 MARKER
 36 MARKER
 37 MARKER
 38 MARKER
 39 MARKER
 40 MARKER
 41 MARKER
 42 MARKER
 43 MARKER
 44 MARKER
 45 MARKER
 46 MARKER
 47 MARKER
 48 MARKER
 49 MARKER
 50 MARKER
 51 MARKER
 52 MARKER
 53 MARKER
 54 MARKER
 55 MARKER
 56 MARKER
 57 MARKER
 58 MARKER
 59 MARKER
 60 MARKER
 61 MARKER
 62 MARKER
 63 MARKER
 64 MARKER
 65 MARKER
 66 MARKER
 67 MARKER
 68 MARKER
 69 MARKER
 70 MARKER
 71 MARKER
 72 MARKER
 73 MARKER
 74 MARKER
 75 MARKER
 76 MARKER
 77 MARKER
 78 MARKER
 79 MARKER
 80 MARKER
 81 MARKER
 82 MARKER
 83 MARKER
 84 MARKER
 85 MARKER
 86 MARKER
 87 MARKER
 88 MARKER
 89 MARKER
 90 MARKER
 91 MARKER
 92 MARKER
 93 MARKER
 94 MARKER
 95 MARKER
 96 MARKER
 97 MARKER
 98 MARKER
 99 MARKER
 100 MARKER

4 SLEDS	23 SL	1 SLACK	5 SLEDGE
2 SLEEPS	1 SLEAK	1 SLEIGH	13 SLEDGE
3 SLEAP	3 SLEAWY	2 S'ALL	1 SMALLER
10 SLEAVE	1 SLEATH	1 SLEAZA	7 SO
1 SLEAZ	3 SOLVENT	1 SLEVE	2 SOUND
2 SLEED	18 SPLICE	1 SPECIAL	1 SPECIFIED
1 SLEEF	1 SLEETS	2 SPLICED	1 SPLICES
1 SLEPLGS	2 SLEAFE	1 SPRAY	1 SPRING
2 SLEALIZE	4R SLEAGE	1 SQUARELY	2 ST-120
12 SLEAJARD	35 SLEAGARDS	2 STAGES	8 STAND
1 SLEAVE	18 SLEAT	5 STABOBY	1 STANDS
1 SLEAF	2 SLEATHU/POWER	2 SLEAT-STOP	1 STAPTS
16 SLEAP	1 SLEEF	1 SLEATHARY	1 STATUS
1 SLEAPING	2 SLEEF	2 SLEPS	1 STOCKPILE
1 SLEAPING	1 SLEAF	2 STORAGE	14 STORE
1 SLEAPING	1 SLEAF	2 STRAPS	1 STORE
1 SLEAPING	1 SLEAF	1 STRAPG	6 STRUCTURAL
1 SLEAPING	1 SLEAF	4 SUBPARAGRAPHS	2 SUFFICIENT
1 SLEAPING	1 SLEAF	2 SUPERT	1 SURE
1 SLEAPING	1 SLEAF	4 S'PRACES	9 SUSPENDED
1 SLEAPING	1 SLEAF	7 S'ITCHES	2 SAUNG
1 SLEAPING	1 SLEAF	1 T-BELTS	1 T-1500A
1 SLEAPING	1 SLEAF	7 T-4191A	1 T-426R
1 SLEAPING	1 SLEAF	1 T-CITICAL	1 TAILGATE
1 SLEAPING	1 SLEAF	9 TAPE	8 TASK
1 SLEAPING	1 SLEAF	1 TEC	2 TECHNICAL
1 SLEAPING	1 SLEAF	2 TEN	7 TENT
1 SLEAPING	1 SLEAF	3 TEAN	64 THAT
1 SLEAPING	1 SLEAF	7 THEM	13 THEN
1 SLEAPING	1 SLEAF	2 THEY	1 THIRD
1 SLEAPING	1 SLEAF	4 T-BREADS	18 THREE
1 SLEAPING	1 SLEAF	50 THROUGH	1 THRL
1 SLEAPING	1 SLEAF	1 TIED	3 TIEDOWN
1 SLEAPING	1 SLEAF	2 TIGHTENED	31 TIME
1 SLEAPING	1 SLEAF	319 TO	2 TOGETHER
1 SLEAPING	1 SLEAF	1 TORQUES	2 TCL
1 SLEAPING	1 SLEAF	5 TOP	25 TORQUE
1 SLEAPING	1 SLEAF	1 TOW	3 TOWARD
1 SLEAPING	1 SLEAF	6 TRACTOR	16 TRAILER
1 SLEAPING	1 SLEAF	3 TRAFFER	12 TRANSLATING
1 SLEAPING	1 SLEAF	2 TRAPPED	8 TRAVEL
1 SLEAPING	1 SLEAF	13 TRIPED	2 TROUGH
1 SLEAPING	1 SLEAF	1 TRING	24 TURN
1 SLEAPING	1 SLEAF	1 TUPUS	1 TWISTED
1 SLEAPING	1 SLEAF	1 T1500	1 T1500A
1 SLEAPING	1 SLEAF	4 U-BRACKETS	1 U-SHAPED
1 SLEAPING	1 SLEAF	1 UNCOVERED	13 UNDER
1 SLEAPING	1 SLEAF	13 UNIT	2 UNLESS
1 SLEAPING	1 SLEAF	5 UP-PACKAGE	1 UNSCREW
1 SLEAPING	1 SLEAF	1 UPMILL	6 UPPER

3	ALWAYS	3	ANGLE	3	APPROPRIATE
3	LA-1	3	BELOW	3	ARENEATH
3	BRIDGE	3	BUNDLE	3	BY-PASS
3	CHARREL	3	CHIEF	3	CHOCK
3	CLEARANCE	3	CLOSED	3	CLOTHING
3	CONNECTING	3	CONNECTORS	3	COOL
3	CRIMP	3	CROSS	3	CYCLES
3	DIP	3	DISENGAGED	3	DUNE
3	DRIVE	3	DS	3	EFFECTIVE
3	LEAS	3	ERROR	3	EXPENDABLES
3	EXTENSION	3	EYES	3	FIG
3	FILLED	3	FIXED	3	GIRTH
3	HEADSET	3	HITCH	3	MOIST
3	HOOK	3	INERS	3	IT
3	INDIVIDUAL	3	ITEMS	3	JOB
3	LESS	3	LINEAR	3	MATTER
3	MOUNTED	3	MOUNTING	3	MOVEMENT
3	NORMAL	3	OUTLINE	3	OUTLINE
3	PADA	3	PALLEL	3	PERSHING
3	PLUG	3	POCKET	3	PRISM
3	QUICK	3	RECEPTACLE	3	REHLTE
3	RIGHT	3	RINGS	3	ROUTES
3	SCREW	3	SELECTOR	3	SEQUENTIAL
3	SETSOREW	3	SIGHT	3	SIMULTANEOUSLY
3	SHAKE	3	SHAKE	3	SYSTEMS
3	TWIST	3	THREE	3	TIEDOWN
3	TRANSFER	3	VALVE	3	VENT
3	TUNE	2	ACCESS	2	ACTUATE
2	ALIGNMENT	2	AMMETER	2	APPFACHES
2	AUTO	2	BAG	2	BEING
2	BENT	2	BYOND	2	BLUCKS
2	BYPASS	2	CANVAS	2	CAPSCRENS
2	CAPTITUDE	2	CASTER	2	CB
2	CHUCK	2	CLEAR	2	COCKS
2	CONFIDENCE/STANDARD	2	CONFIGURATIONS	2	CUNSTRUCT
2	COVERING	2	CRACKED	2	CPEMEN
2	DAILY	2	DANGED	2	DENTS
2	DISCARD	2	DISCONNECTION	2	DISMABLE
2	LOTS	2	DUMP	2	DUMPAGE
2	EDGE	2	ELECTRIC	2	ELECTRONIC
2	ENABLE	2	EABLING	2	ENGAGED/DISENGAGED
2	EMBOSH	2	ENTRY	2	ETC
2	FABRIC	2	FAN	2	FINE
2	FITTING	2	FLAT	2	FLUCTUATIONS
2	FOUND	2	FRAMES	2	GENTLY
2	GROUNDED	2	HALVES	2	HANDLES
2	HOLDER	2	HOLDING	2	HOOBS
2	HORN	2	HOSES	2	IGNITE
2	INCREASE	2	INDICATIONS	2	INITIATION
2	INSIDE	2	INSTALLATION	2	INSTALLED



HEADQUARTERS

DATA CONTROL NUMBER

JOB NO / PROJECT NO

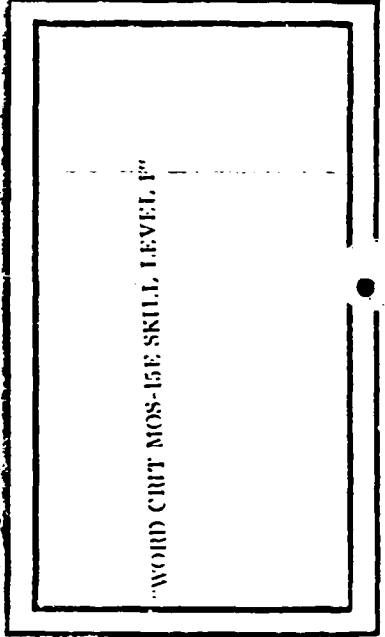
UNITED STATES ARMY TRAINING AND DOCTRINE COMMAND

FORT MONROE, VIRGINIA 23651



NOV 25 1981

15E-1



COPY _____ OF _____ COPIES

AD-A123 555

JOB LANGUAGE PERFORMANCE REQUIREMENTS FOR MDS 15E
PERSHING MISSILE CREWMAN(U) DEFENSE LANGUAGE INST
LACKLAND AFB TX ENGLISH LANGUAGE CENTER 12 APR 77

2/2

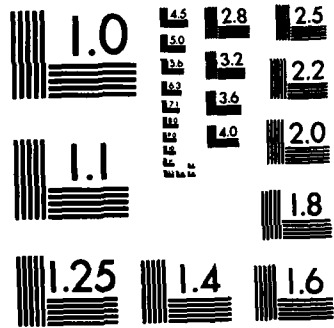
UNCLASSIFIED

F/G 5/9

NL

END

FILED
+
DTX



MICROCOPY RESOLUTION TEST CHART
NATIONAL BUREAU OF STANDARDS-1963-A

2 1 STALLING
2 2 AS
2 3 LAMP
2 4 LIGHTED
2 5 LOCAL
2 6
2 7
2 8
2 9
2 10
2 11
2 12
2 13
2 14
2 15
2 16
2 17
2 18
2 19
2 20
2 21
2 22
2 23
2 24
2 25
2 26
2 27
2 28
2 29
2 30
2 31
2 32
2 33
2 34
2 35
2 36
2 37
2 38
2 39
2 40
2 41
2 42
2 43
2 44
2 45
2 46
2 47
2 48
2 49
2 50
2 51
2 52
2 53
2 54
2 55
2 56
2 57
2 58
2 59
2 60
2 61
2 62
2 63
2 64
2 65
2 66
2 67
2 68
2 69
2 70
2 71
2 72
2 73
2 74
2 75
2 76
2 77
2 78
2 79
2 80
2 81
2 82
2 83
2 84
2 85
2 86
2 87
2 88
2 89
2 90
2 91
2 92
2 93
2 94
2 95
2 96
2 97
2 98
2 99
2 100

2 INTF AL
2 KEYS
2 LEAKING
2 LINK
2 LOCKED
2 MALFUNCTION
2 NET
2 NICKS
2 NOT
2 ON-TO
2 OUTLET
2 PHASE
2 PROGRAMMER-TEST
2 RESERVIR
2 REV
2 SEATING
2 SEATED
2 SEQUENCES
2 SHUTDOWN
2 SLEEVES
2 SPLICED
2 STAGES
2 STOPS
2 SUPPORT
2 TECHNICAL
2 THEY
2 TCRGIE
2 TROUGH
2 T4191A
2 VOLTMETER
2 XI

2 TFFRY
2 KNOT
2 LIFT
2 LIT
2 LODGE
2 MARKER
2 PPTIMON
2 RATIFY
2 BCGOR
2 CRITICAL
2 PICE
2 PLUNGER
2 PROVIDE
2 PFTICLE
2 S
2 SC
2 SECURITY
2 SHACKLE
2 SIGNALS
2 SMALL
2 SQUARE
2 START-STOP
2 STORAGE
2 SURETY
2 TEL
2 THUMB
2 TUB
2 TUBE
2 VALES
2 WAY
2 YELLOW

2 JACKS
2 LADDER
2 LIFTED
2 LIVES
2 LOWERED
2 MAXIMUM
2 NEAREST
2 NSN
2 OFFSET
2 ORIENT
2 PERFORMING
2 POINTING
2 PUT
2 RETURN
2 SAME
2 SCRENDRIVER
2 SEPARATER
2 SHAPE
2 SITE
2 SOUND
2 ST-120
2 STATION/PCWER
2 STRAPS
2 SWUNG
2 TEXTILE
2 TIGHTENED
2 TRAINING
2 TURNED
2 V
2 WHERE

1 1 AC
1 2
1 3
1 4
1 5
1 6
1 7
1 8
1 9
1 10
1 11
1 12
1 13
1 14
1 15
1 16
1 17
1 18
1 19
1 20
1 21
1 22
1 23
1 24
1 25
1 26
1 27
1 28
1 29
1 30
1 31
1 32
1 33
1 34
1 35
1 36
1 37
1 38
1 39
1 40
1 41
1 42
1 43
1 44
1 45
1 46
1 47
1 48
1 49
1 50
1 51
1 52
1 53
1 54
1 55
1 56
1 57
1 58
1 59
1 60
1 61
1 62
1 63
1 64
1 65
1 66
1 67
1 68
1 69
1 70
1 71
1 72
1 73
1 74
1 75
1 76
1 77
1 78
1 79
1 80
1 81
1 82
1 83
1 84
1 85
1 86
1 87
1 88
1 89
1 90
1 91
1 92
1 93
1 94
1 95
1 96
1 97
1 98
1 99
1 100

1 ACCUMPLISHED
1 ACTIVATING
1 AGENT
1 ALONG
1 AM/GSA
1 APPARATUS
1 AR
1 ATTACHMENT
1 AUX
1 BAFFLE
1 BEGIN
1 BLOWN
1 BREAKS
1 BROKEN
1 BUNKING
1 CARBON
1 CAUTION
1 CHAMBER

1 ACCUMULATOR
1 ACTUALLY
1 AIRHOSE
1 ALPHA
1 A/GSA-113
1 APPENDIX
1 AREAS
1 ATTEMPT
1 AVOID
1 BURREL
1 BEND
1 BODY
1 BREATHING
1 BUDGES
1 BUTTOMS
1 CARTRIDGES
1 CCM
1 CHANGE

1 ACROSS
1 ADEQUATE
1 ALAPM
1 ALTER
1 ANOTHER
1 APPLICABLE
1 APPAREMENT
1 AUTHORIZED
1 ALOJI
1 BARS
1 BINDER
1 BOOTS
1 BRIGHTNESS
1 BUILDING
1 CABLING
1 CASES
1 CENTERLINE
1 CHAP

2 1
2 2
2 3
2 4
2 5
2 6
2 7
2 8
2 9
2 10
2 11
2 12
2 13
2 14
2 15
2 16
2 17
2 18
2 19
2 20
2 21
2 22
2 23
2 24
2 25
2 26
2 27
2 28
2 29
2 30
2 31
2 32
2 33
2 34
2 35
2 36
2 37
2 38
2 39
2 40
2 41
2 42
2 43
2 44
2 45
2 46
2 47
2 48
2 49
2 50
2 51
2 52
2 53
2 54
2 55
2 56
2 57
2 58
2 59
2 60
2 61
2 62
2 63
2 64
2 65
2 66
2 67
2 68
2 69
2 70
2 71
2 72
2 73
2 74
2 75
2 76
2 77
2 78
2 79
2 80
2 81
2 82
2 83
2 84
2 85
2 86
2 87
2 88
2 89
2 90
2 91
2 92
2 93
2 94
2 95
2 96
2 97
2 98
2 99
2 100

13 HOLD	13 IN	13 PARAG	MS	13 PREPARE
13 DELIVER	13 SWIT	13 THEN		13 TRIPPOD
12 UNIT	12 UNIT	13 USE		12 AC
12 ALINE	12 ALINE	12 USE		12 APPLIED
12 ASSEMBLE	12 ASSEMBLED	12 BRANCH		12 CLAMP
12 CONNECTED	12 CONNECTED	12 CIRCUIT		12 DIRECTED
12 FOUR	12 FOUR	12 LEVER		12 SHOULD
12 TOOLKIT	12 TOOLKIT	12 TRUSSLING		12 WORK
11 AREA	11 AREA	11 ASSFALIES		11 BALL
11 CRA	11 CRA	11 FORWARD		11 FUEL
11 HEATING	11 HEATING	11 HYDRELECTRIC		11 NUCLEAR
11 PANEL	11 PANEL	11 PULL		11 SHUT
11 WRECKER	11 WRECKER	10 A APTER		10 APPLY
10 DRIVER	10 DRIVER	10 BGM		10 HAND
10 IAN	10 IAN	10 INDEX		10 LAY
10 LINES	10 LINES	10 OPERATION		10 OPERATIONS
10 POINT	10 POINT	10 PROPERLY		10 ROTATE
10 SOCKET	10 SOCKET	10 STATION		10 SUPERVISOR
10 WILE	10 WILE	9 BRACE		9 CENTER
9 CYLINDER	9 CYLINDER	9 EQUIPMENT		9 EXPLOSIVE
9 FULLY	9 FULLY	9 J		9 LEG
9 FAST	9 FAST	9 LIVE		9 PAD
9 RETAINER	9 RETAINER	9 SHOWN		9 SUSPENDED
9 UP	9 UP	9 VOTE		8 ALLW
8 CAUTIONS	8 CAUTIONS	8 CONDITIONED		8 CORRECTLY
8 DEPTH	8 DEPTH	8 DETERMINE		8 ERECTOR
8 FAULTS	8 FAULTS	8 FEET		8 GUIDED
8 HAS	8 HAS	8 HEAD		8 HOSE
8 INDICATORS	8 INDICATORS	8 LAUNCHER		8 LCG
8 MAINTENANCE	8 MAINTENANCE	8 MAY		8 NO
8 PASS	8 PASS	8 POSITIONED		8 PRECAUTIONS
8 PUSH	8 PUSH	8 SELECT		8 SIDE
8 TASK	8 TASK	8 TRACTOR		8 TRAVEL
8 VERIFY	8 VERIFY	7 AUXILIARY		7 BEEN
7 CAREFULLY	7 CAREFULLY	7 CONNECTIONS		7 ELECTRICAL
7 FREQUENCY	7 FREQUENCY	7 HIGH		7 HYDRAULIC
7 LAUNCH	7 LAUNCH	7 LEFT		7 LIFTING
7 MATED	7 MATED	7 REST		7 PINS
7 PRIME	7 PRIME	7 PROPER		7 REMOVED
7 POLLERS	7 POLLERS	7 SC		7 SWITCHES
7 TEMPERATURE	7 TEMPERATURE	7 TEST		7 THEM
7 USED	7 USED	7 VEHICLE		7 VOLTAGE
7 WEAPON	7 WEAPON	7 WHEEL		6 ATOMIC
6 BLED	6 BLED	6 BELTS		6 CLEAR
6 CONFIDENCE	6 CONFIDENCE	6 COUNTERCLOCKWISE		6 COVERS
6 CUBICLE	6 CUBICLE	6 CUT		6 DAMPENER
6 DUES	6 DUES	6 DUCT		6 EXPLOSIVES
6 FOMEIGN	6 FOMEIGN	6 FUNCTIONS		6 HIGH-PRESSURE
6 IMAGE	6 IMAGE	6 I-SERT		6 INSPECTION
6 IX	6 IX	6 K		6 LAYING

2	DEFINATED	321							
2	DEFIBRATING	329	137,13	25,1	5,5				
2	DEFIBRATOR	21,3	137,1						
2	DEFUSIBLE	110,2							
2	DEFURRING	110,1							
2	DISTRIBUTION	51,1	34,3						
2	DEUT	52,3							
2	DEUT	51,3							
2	DUE	110,1							
2	DUE	110,1	13,1						
2	DAMAGE	133,1	158,1						
2	DUTIES	10,1	9,1	6,3	2,2	611,11	182,4	158,2	133,1
2	EL	56,1	51,3	47,1	34,2	32,4	22,9	20,3	13,4
2	ELIC	32,1							
2	ELECTRICAL	33,1	9,1	110,2	71,2	56,1			
2	ELECTRIFICATION	69,1							
2	EMPLACEMENT	110,1							
2	EMULSION	32,1							
2	ENGAGED	69,1							
2	ENGAGES	182,1	144,2	133,1	71,1	69,2	56,1	34,1	32,1
2	ERECTOR-LAUNCHER	6,3							
2	ERECTOR	110,2	69,1						
2	ERECTOR	69,1,2							
2	EVACUATE	64,1	25,1	21,4					
2	EXERCISE	9,1							
2	EXPLOSIVE	182,1	110,1	71,5	69,1	21,1			
2	EXPLOSIVES	25,6							
2	EXTENDED	182,1	97,1	71,1	56,1	20,1			
2	EXTENSION	182,1	71,1	56,1					
2	EXTENSION	6,2							
2	EXTRACTING	25,1							
2	EXTRACTS	142,1	137,1	77,1	59,1	26,1	13,2	4,2	
2	EXTRACTING	25,5	8,1						
2	FLASH	11,1							
2	FLASH	25,1							
2	FACILITY	143,1							
2	FACILITY	158,3	133,2	11,1	9,1				
2	FACILITY	158,3	133,2	25,1	17,2	9,1	5,1	2,1	
2	FACILITY	21,2,6							
2	FACILITY	21,1							
2	FACILITY	158,2	133,3						
2	FACILITY	133,1							
2	FACILITY	137,2	3,1						
2	FACILITY	47,1	5,1						
2	FACILITY	97,2	33,12	16,2	9,4	6,1	2,4	1,1	
2	FACILITY	110,4	1,1						
2	FACILITY	52,3	4,1	110,4					
2	FACILITY	33,1							
2	FACILITY	6,1							
2	FACILITY	158,1	133,1	69,1					

MDS WORD LIST BY PAGE

2	42	137,1	21,2	5,2	3,1				
2	42A3	5,3	137,2						
2	42A4	21,5		17,1	9,1				
2	42A5	133,1	33,3	77,3	34,1	611,4	97,6	85,3	
2	42A6	70,1	10,1						
2	42A7	47,1							
2	42A8	47,1	85,1	21,5					
2	42A9	5,3	137,3						
2	42A10	71,1							
2	42A11	97,1							
2	42A12	611,1	158,1						
2	42A13	8,1	25,10						
2	42A14	158,2	143,1	133,9	64,1	61,1	21,1	17,2	16,2
2	42A15	158,1	22,1	10,1					
2	42A16	611,2	182,2	158,1	133,2	119,1	97,5	25,2	71,1
2	42A17	110,1							
2	42A18	77,1	22,2						
2	42A19	16,1	9,1						
2	42A20	182,2	110,1	71,2	25,1	21,1	1,1		
2	42A21	137,1							
2	42A22	21,1							
2	42A23	143,3							
2	42A24	158,1	133,1	17,1	9,1				
2	42A25	34,1	10,1						
2	42A26	34,1	25,1	20,2	71,1	56,1	51,1	611,1	158,1
2	42A27	25,2	97,1	69,1	47,2				
2	42A28	17,4	9,14	158,6	133,8	64,1	61,1	47,3	33,1
2	42A29	158,1	133,3						
2	42A30	7,2	17,3	9,4	61,1	33,3	133,5	49,1	158,4
2	42A31	17,1	10,1	34,1	33,1				
2	42A32	17,1	22,6	158,1	133,1				
2	42A33	3,1							
2	42A34	6,3	69,11						
2	42A35	25,1							
2	42A36	25,1							
2	42A37	71,1	182,1						
2	42A38	56,2	71,2	69,1	182,1	143,2	137,1	110,9	77,1
2	42A39	25,1	20,1	6,1	3,1	1,1			
2	42A40	7,4							
2	42A41	9,1							
2	42A42	1,2	182,12	137,8	77,2	71,4	69,2	46,1	47,2
2	42A43	77,1							
2	42A44	182,2	71,2	1,1					
2	42A45	32,4	21,1	6,1					
2	42A46	47,1							
2	42A47	611,2							
2	42A48	22,7	5,1	3,1	143,2				
2	42A49	47,3							
2	42A50	110,1	98,1						



MOS - 15E
Skill Level 1

MOS WORD LIST BY PAGE

	143,3	133,2	97,1	71,2	10,3	6,4
1 ADJUST	182,1	158,6				
1 ADV	143,7	69,5				
1 ASSEMBLIES	102,1	137,1				
1 AUTHORITY	102,1	101,4,5,6	69,1	47,1	10,3	6,4
1 CAUTIONS	102,1	110,3	71,1	32,1		
1 COMPETITION	159,1	133,3	47,1			
1 CONFERENCE/STANDARD	133,1					
1 EXCHANGE	97,1	69,2	20,2	6,2		
1 EXHAUST	110,2					
1 EXHAUSTION	21,1					
1 EXHAUSTION	34,1	2,1				
1 EXHAUSTION	110,3	8,1				
1 EXHAUSTION	25,1	110,4				
1 IMMEDIATELY	25,3					
1 MISPIPE	21,1					
1 OVA	17,1					
1 REMOTE-LOCAL	9,1					
1 SAFE	21,3					
1 SIMULTANEOUSLY	56,1	71,1	69,1			
1 SLING	182,2	110,6	6,1	71,2	1,1	
1 STAIRWAY	3,1	158,1	51,2	34,1		
1 T-1502A	110,2					
1 T-4127A	110,4	108,2				
1 T-151A	119,1	6,1				
1 AC	158,7	133,5				
2 ACCUMULATOR	22,1					
2 ACTIVATING	21,1					
2 ACTIVATOR	47,3	22,1				
2 ADJUNCT	32,1					
2 AIRRAKE	611,1	97,1	33,2			
2 ALERT	3,1					
2 ALIPE	1,2	182,1	143,2	77,1	71,1	56,1
2 ALIPE	6,1	85,1	77,1	611,1		
2 ALIPE	6,2	143,1	71,1			
2 ALIPE	158,1	133,1				
2 ALIPE	9,1					
2 ALIPE	34,1					
2 ALIPE	143,4					
2 ALIPE	158,4	133,4	6,1			
2 ALIPE	69,1	6,3				
2 ALIPE	110,6					
2 ALIPE	182,2	90,2	47,2	21,1	7,2	
2 ALIPE	56,2	77,1	71,2	182,1		
2 ALIPE	77,1					
2 ALIPE	158,1	133,2	61,1	9,1		
2 ALIPE	192,1					
2 ALIPE	1,3	5,1	3,1			
2 ALIPE	21,25	5,3	137,1			
2 ALIPE	71,5					
2 ALIPE	25,2	21,2				

6 ACCEPTS
6 ALIAS
6 SERVICE
6 T-9127A
6 ACCEPTS
5 ACCEPT
5 BATTERY
5 CASE
5 CLIPS
5 CONNECTION
5 EXTENDED
5 FOOT
5 HOLE
5 LABEL
5 LOCKPIN
5 PL
5 PLOTS
5 PREPARED
5 WALL
5 RECORD
5 SCREWS
5 STAFFBY
5 UNPACKAGE
5 ZDOK
4 ALIGNMENT
4 APPROXIMATELY
4 BAOS
4 BOARD
4 BURRING
4 CARRYING
4 CHECKS
4 DAMAGE
4 DESIGNATION
4 EMERGENCY
4 FIVES
4 GOVERNOR
4 MESSAGE
4 INDICATION
4 J2
4 MASTER
4 MODE
4 NUMBER
4 POSITIONS
4 PROGRAMMER
4 RETAIN
4 SKILL
4 THREADS
4 TRACK
4 VERTICAL

6 MAM
6 UNDO
6 PROTECTI--
6 SIX
6 TIGHTEN
6 WHICH
5 AGAINST
5 BLAST
5 CHAINS
5 COMPONENTS
5 DISTANCE
5 FLANGES
5 FREE
5 HELPS
5 LEGS
5 MADE
5 MPAB
5 PICS
5 PREVENTIVE
5 RAISEP
5 REFER
5 SEAT
5 TELESCOPE
5 VALVES
4 ACTUATOR
4 A/FS-110
4 ASSISTANCE
4 BAR
4 BOTH
4 BUT
4 CERTIFIED
4 CONTINUITY
4 DEPOSITIONS
4 DISTRIBUTION
4 EXTRA
4 FIRMLY
4 GREASE
4 HELP
4 INTERSTAGE
4 L
4 MATE
4 MP2
4 OTHER
4 PRECONDITION
4 PSIG
4 RFB
4 SUBPARAGRAPHS
4 THEFTLE
4 U-BRACKETS
4 VOLT METERS

6 MANUALLY
6 PERFORMED
6 RETAINING
6 STUPED
6 T4127A
5 ATTACHING
5 BOLT
5 CLEAN
5 CONDUCTICNER
5 ENGAGE
5 FY
5 GEN
5 IMMEDIATE
5 LENS
5 METERS
5 MAG
5 PIN
5 PRIMING
5 RAISED
5 ROLLER
5 SECTIONS
5 TIE
5 WATER
5 AIRPRAKE
4 ANNOUNCES
4 AWAY
4 BEAM'S
4 BRACKES
4 CANNOT
4 CHAIN
4 COURTDOON
4 DESIGNATED
4 DOORS
4 FILLING
4 FIVE
4 GREEN
4 M42118
4 INVOLVING
4 LAUNCHING
4 MATERIAL
4 M33
4 PER
4 PRESTART
4 PTS/PS
4 SANDBAGS
4 SURFACES
4 TIGHT
4 UNLOCK
4 WINDOW

6 MAM
6 UNDO
6 PROTECTI--
6 SIX
6 TIGHTEN
6 WHICH
5 AGAINST
5 BLAST
5 CHAINS
5 COMPONENTS
5 DISTANCE
5 FLANGES
5 FREE
5 HELPS
5 LEGS
5 MADE
5 MPAB
5 PICS
5 PREVENTIVE
5 RAISEP
5 REFER
5 SEAT
5 TELESCOPE
5 VALVES
4 ACTUATOR
4 A/FS-110
4 ASSISTANCE
4 BAR
4 BOTH
4 BUT
4 CERTIFIED
4 CONTINUITY
4 DEPOSITIONS
4 DISTRIBUTION
4 EXTRA
4 FIRMLY
4 GREASE
4 HELP
4 INTERSTAGE
4 L
4 MATE
4 MP2
4 OTHER
4 PRECONDITION
4 PSIG
4 RFB
4 SUBPARAGRAPHS
4 THEFTLE
4 U-BRACKETS
4 VOLT METERS

60 LINE	451 AND	319 TE	284 A
61	199 SECT. 1	142 G	141 IN
62	195 B	97 C	97 IS
63	94 EL	89 T	84 SET
64	76 BE	74 TAG	73 JUS
65	70 U	68 PGI	67 FOR
66	66 MISSILE	64 TAT	60 POSITION
67	58 ASSEMBLY	56 FIGURE	56 PAP
68	56 WILL	55 CAT	54 AIR
69	54 TGT	53 INSURE	51 CHAPTER
70	50 PARAGRAPH	50 T-POUGH	48 ENV
71	48 STAGE	46 E	46 GUIDE
72	45 IF	44 CONNECT	44 CONTAINER
73	44 PUNER	43 CONTROL	43 GENERATOR
74	42 PERFORMANCE	41 CONDITIONS	41 GIVEN
75	40 FIR	40 TAP	40 INT
76	40 LAM	40 PFI	40 OJA
77	38 PS	36 FRONT	36 MARUAL
78	36 OBSERVE	36 RING	36 WARHEAD
79	35 STANDARDS	34 ATE	33 PERFORM
80	32 ONE	32 OPERATORIS	32 VALVE
81	31 PLACE	31 REFERENCES	31 SYSTEM
82	31 WITHIN	30 BLASTING	30 MINUTES
83	29 AT	29 CAP	29 F
84	28 AZIMUTH	28 DETERMINATING	28 HANDLING
85	27 CHARGE	27 SEC MD	26 CORU
86	26 HOISTING	26 LOWER	26 NOTE
87	26 SWITCH	25 AS	25 BEAM
88	25 DEVICE	25 INSTALL	25 REQUIRED
89	25 TORQUE	24 BY	24 CABLES
90	23 ROOM	23 G	23 LINE
91	23 SLA	23 TABLE	22 ADJUST
92	22 DAVIT	22 DO	22 FIRST
93	22 IT	22 OPERATOR	22 USING
94	21 7757	20 APU	20 OVER
95	20 RELEASE	19 CIRCUIT	19 CORRECT
96	20 LOCK	19 MAIN	19 SAFETY
97	18 DC	18 PLACE	18 REPLACED
98	18 PROCEDURES	18 SPlice	18 START
99	17 EXTEND	18 UNTIL	17 BETWEEN
100	17 AS	17 LEAD	17 SEE
101	16 NECESSARY	16 BREAKER	16 FIRE
102	16 TRAILER	16 PRESSURE	16 ROD
103	15 DISCONNECT	15 ACCORDANCE	15 ARM
104	15 MONITOR	15 ENGINE	15 FORM
105	14 CONNECTOR	15 OPEN	15 PLATFORM
106	14 OPERATE	14 FIRING	14 III
107	14 WITHOUT	14 RA	14 ROPES
108	13 DOWN	13 ASSISTANTS	13 BLANKET
109		13 DOWN	13 HANDLE



MDS WCRO LIST BY PAGE

2	3	4	5	6	7	8	9	10	11	12	13	14	15	16	17	18	19	20	21	22	23	24	25	26	27	28	29	30	31	32	33	34	35	36	37	38	39	40	41	42	43	44	45	46	47	48	49	50	51	52	53	54	55	56	57	58	59	60	61	62	63	64	65	66	67	68	69	70	71	72	73	74	75	76	77	78	79	80	81	82	83	84	85	86	87	88	89	90	91	92	93	94	95	96	97	98	99	100	101	102	103	104	105	106	107	108	109	110	111	112	113	114	115	116	117	118	119	120	121	122	123	124	125	126	127	128	129	130	131	132	133	134	135	136	137	138	139	140	141	142	143	144	145	146	147	148	149	150	151	152	153	154	155	156	157	158	159	160	161	162	163	164	165	166	167	168	169	170	171	172	173	174	175	176	177	178	179	180	181	182	183	184	185	186	187	188	189	190	191	192	193	194	195	196	197	198	199	200	201	202	203	204	205	206	207	208	209	210	211	212	213	214	215	216	217	218	219	220	221	222	223	224	225	226	227	228	229	230	231	232	233	234	235	236	237	238	239	240	241	242	243	244	245	246	247	248	249	250	251	252	253	254	255	256	257	258	259	260	261	262	263	264	265	266	267	268	269	270	271	272	273	274	275	276	277	278	279	280	281	282	283	284	285	286	287	288	289	290	291	292	293	294	295	296	297	298	299	300
2	3	4	5	6	7	8	9	10	11	12	13	14	15	16	17	18	19	20	21	22	23	24	25	26	27	28	29	30	31	32	33	34	35	36	37	38	39	40	41	42	43	44	45	46	47	48	49	50	51	52	53	54	55	56	57	58	59	60	61	62	63	64	65	66	67	68	69	70	71	72	73	74	75	76	77	78	79	80	81	82	83	84	85	86	87	88	89	90	91	92	93	94	95	96	97	98	99	100	101	102	103	104	105	106	107	108	109	110	111	112	113	114	115	116	117	118	119	120	121	122	123	124	125	126	127	128	129	130	131	132	133	134	135	136	137	138	139	140	141	142	143	144	145	146	147	148	149	150	151	152	153	154	155	156	157	158	159	160	161	162	163	164	165	166	167	168	169	170	171	172	173	174	175	176	177	178	179	180	181	182	183	184	185	186	187	188	189	190	191	192	193	194	195	196	197	198	199	200	201	202	203	204	205	206	207	208	209	210	211	212	213	214	215	216	217	218	219	220	221	222	223	224	225	226	227	228	229	230	231	232	233	234	235	236	237	238	239	240	241	242	243	244	245	246	247	248	249	250	251	252	253	254	255	256	257	258	259	260	261	262	263	264	265	266	267	268	269	270	271	272	273	274	275	276	277	278	279	280	281	282	283	284	285	286	287	288	289	290	291	292	293	294	295	296	297	298	299	300

WORD	71,1	5,1	4,2	3,1	141,8	10,1	40,1	611,2	145,1	144,5	143,9	137,1	133,1	132,1
3 CASCIO	71,1													
1 CASH	117,1	5,1	4,2	3,1										
1 CASHIERS	72,1													
1 CASHIERS	1,1													
1 CASHIERS	49,3	33,1												
1 CASHIERS	71,1													
1 CASHIERS	98,1	1,2												
1 CASHIERS	75,5	2,1	142,22	141,8	10,1	40,1	611,2	145,1	144,5	143,9				
1 CASHIERS	2,1													
1 CASHIERS	1,2	182,7	69,3											
1 CASHIERS	611,1	97,1	32,1	25,1										
1 CASHIERS	3,3	137,2												
1 CASHIERS	110,1		21,2											
1 CASHIERS	32,2	25,1												
1 CASHIERS	25,1													
1 CASHIERS	67,1	7,1	158,2	133,4										
1 CASHIERS	1,1	13,1	10,1	9,1	8,1	7,1	6,2	5,1	3,3	3,3	182,1	158,1	137,1	133,1
1 CASHIERS	110,3	108,1	98,1	97,1	85,1	77,1	71,1	69,2	56,1	56,1	47,2	34,2	33,1	32,1
1 CASHIERS	25,2	22,1	21,1	20,1	17,1	16,1								
1 CASHIERS	133,1													
1 CASHIERS	127,1	85,1	71,1	3,1										
1 CASHIERS	1,9	69,14	56,1	51,1	34,1	8,1	6,2	5,2	3,1	3,1	182,2	110,7	108,1	71,2
1 CASHIERS	6,1													
1 CASHIERS	8,1	110,3												
1 CASHIERS	2,1	10,1	9,3	22,12	17,1	13,1	11,1	143,1	133,3	69,3	64,2	61,1	61,1	51,3
1 CASHIERS	34,1	33,1	32,3	25,2										
1 CASHIERS	11,1													
1 CASHIERS	6,1													
1 CASHIERS	611,1													
1 CASHIERS	611,1	110,1	3,1	1,3	97,2	71,2	69,5	47,2	33,1	16,1	13,5	7,1		
1 CASHIERS	69,1	47,1												
1 CASHIERS	10,1													
1 CASHIERS	5,1													
1 CASHIERS	69,1													
1 CASHIERS	21,3													
1 CASHIERS	110,1													
1 CASHIERS	143,1													
1 CASHIERS	611,1													
1 CASHIERS	21,1													
1 CASHIERS	5,4	8,1	6,2	110,6	32,12									
1 CASHIERS	119,1													
1 CASHIERS	611,1													
1 CASHIERS	611,2	182,1	97,1	47,1										
1 CASHIERS	20,1													
1 CASHIERS	21,2													
1 CASHIERS	33,6	97,1												
1 CASHIERS	97,1													
1 CASHIERS	47,1	6,1	69,1											
1 CASHIERS	21,1													
1 CASHIERS	5,2													



MOS WORD LIST BY PAGE

Word	119,1	130,1	133,2	69,1	61,1	140,1
3 INDICATING	119,1	133,1	9,1	69,1	61,1	140,1
3 INDICATOR	150,1	9,1	133,2	143,1		
3 INDICATORS	133,2	150,4				
3 INLET	47,1	17,1		182,2		
3 INLET	71,1	1,7				
3 INLET	1,1	69,1				
3 INSURING	98,1					
3 INSIDE	13,1	1,1				
3 INSPECTION	110,4	3,1				
3 INSTALL	1,1	47,2	182,1	13,1	71,1	69,2
3 INSTALLATION	25,1	69,1				
3 INSTALLED	51,1	143,1				
3 INSTALLED	71,1	182,1				
3 INSTRUMENTS	11,1					
3 INSTRUMENTS	611,1					
3 INTERACT	2,1					
3 INTERCONNECTING	17,1					
3 INTERNAL	158,1	133,1				
3 INTERSECTS	143,1					
3 INTERSECTS	33,2					
3 INTERSECTS	51,1					
3 INTERSECTS	25,1					
3 INTERSECTS	20,1	33,1				
3 JACKS	97,1	611,1				
3 JAMES	56,1	182,1	71,1			
3 JAMES	56,1	182,1				
3 JAMES	56,1	71,1				
3 KEYS	71,1					
3 KEYS	137,1					
3 KEYS	145,1					
3 KEYS	69,3					
3 KEYS	3,2					
3 KEYS	61,2					
3 KEYS	71,1					
3 KEYS	69,1					
3 KEYS	22,8	6,2	69,1	32,1	69,1	56,1
3 KEYS	22,2	5,1	182,1	71,1		
3 KEYS	158,4	133,2	17,1			
3 KEYS	1,1					
3 KEYS	110,1	6,1				
3 KEYS	25,1					
3 KEYS	110,1					
3 KEYS	2,1	22,1				
3 KEYS	69,4					
3 KEYS	1,3	16,1	9,1	182,1	71,3	47,1
3 KEYS	611,1					33,3
3 KEYS	20,1	96,2				
3 KEYS	97,2	47,2				
3 KEYS	137,1					
3 KEYS	20,1	69,1				

3	SYLLABLE	110,1			
2	SURE	9,1			
2	SURF	22,1			
1	SURFIED	10,1			
1	SURFING	69,1			
1	SURFING	143,1	13,1		
1	SURFING	5,2			
1	SURFING	611,1	25,1		
1	SURFING	3,1			
3	STRIPS	70,1	9,1		
3	STRUCTURAL	71,3	56,1	182,2	
3	STREETS	182,1			
3	STRETOGRAPHS	110,4			
3	STRETTES	47,1	55,1	182,2	
3	STRETTES	56,2	182,2	110,2	71,3
3	STRUCK	9,1			
3	STRUCK	34,1	25,3	16,1	8,1
3	STRUCK	110,2		137,1	97,1
3	STRUCK	143,3	6,4		
3	STRUCK	71,2	47,1	182,1	
3	STRUCK	97,3	20,1	3,1	
3	STRUCK	5,1			
3	STRUCK	71,7	56,7	182,7	47,1
3	STRUCK	71,1	69,1	32,1	
3	STRUCK	1,4			
3	STRUCK	110,1			
3	STRUCK	9,1	110,1		
3	STRUCK	6,1			
3	STRUCK	69,12	6,1		
3	STRUCK	3,1	11,1	71,1	96,1
3	STRUCK	71,1	97,1	182,1	137,2
3	STRUCK	21,1			
3	STRUCK	110,4	8,2		
3	STRUCK	71,2	182,2		
3	STRUCK	3,1			
3	STRUCK	143,1	17,1	47,1	33,1
3	STRUCK	133,7	97,2	32,2	22,13
3	STRUCK	47,9		9,4	5,1
3	STRUCK	158,1	133,1		
3	STRUCK	61,1			
3	STRUCK	6,1			
3	STRUCK	21,1			
3	STRUCK	59,1			
3	STRUCK	9,2	133,3	11,1	158,1
3	STRUCK	158,1	133,1		
3	STRUCK	158,1	133,3		
3	STRUCK	5,1			
3	STRUCK	69,2	13,1	6,1	
3	STRUCK	182,3	110,1	47,3	6,1
3	STRUCK	110,5	32,9	5,1	

MOS WORD LIST BY PAGE

4	CRJSMEMBER	97,1							
4	CURTICLE	17,1	133,2	6,2,2	61,1				
4	CURRY	22,1							
4	DETECT	3,1	25,1	21,2					
4	DETECT	25,1							
4	DETECT	77,2							
4	DETECT	25,1							
4	DETECT	98,1							
4	DETECT	25,1							
4	DETECT	69,1							
4	DETECT	3,1	137,2	5,1					
4	DETECT	69,1							
4	DETECT	3,2							
4	DETECT	158,1							
4	DETECT	25,1							
4	DETECT	69,1	7,1	6,1					
4	DETECT	110,4							
4	DETECT	137,1							
4	DETECT	182,6	98,2	21,1	71,9	56,1	47,1	25,1	
4	DETECT	69,2	6,1						
4	DETECT	25,1							
4	DETECT	21,1							
4	DETECT	137,1	119,1	110,11	108,1				
4	DETECT	3,1							
4	DETECT	71,1							
4	DETECT	61,1							
4	DETECT	13,3							
4	DETECT	56,1	182,1	71,1					
4	DETECT	25,1							
4	DETECT	25,1							
4	DETECT	25,4							
4	DETECT	25,1							
4	DETECT	22,3							
4	DETECT	16,1	34,1						
4	DETECT	137,4	3,1						
4	DETECT	6,1							
4	DETECT	25,1							
4	DETECT	69,1	21,1						
4	DETECT	21,2							
4	DETECT	4,1	3,1	2,2	1,3	14,1	6,2	5,2	10,2
4	DETECT	77,1							
4	DETECT	1,1	142,6	119,2	4,1	110,1	25,2		
4	DETECT	6,1	5,2						
4	DETECT	110,1							
4	DETECT	69,1							
4	DETECT	7,1							
4	DETECT	11,1							
4	DETECT	21,1							
4	DETECT	9,1	5,1	133,1	71,3	25,1	21,7	182,3	158,3
4	DETECT	25,1							
4	DETECT	25,1							
4	DETECT	56,3							
4	DETECT	51,1							

HEADQUARTERS

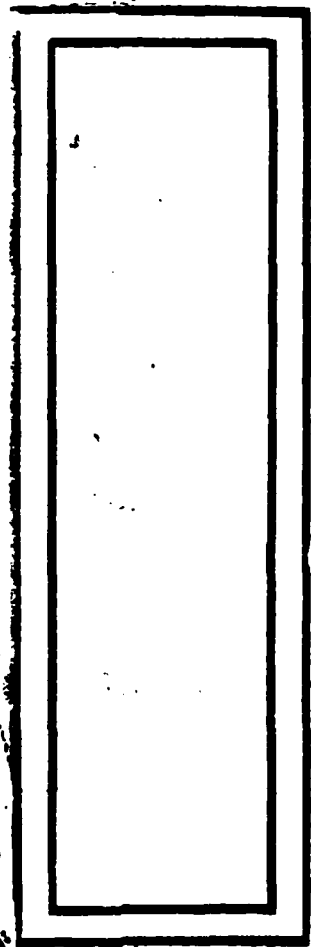
UNITED STATES ARMY TRAINING AND DOCTRINE COMMAND

FORT MONROE, VIRGINIA 23651

DATA CONTROL NUMBER

No / Proj No

SEP 15 1980



MOS ISE SKILL 2

COUNT1 WORD1

COUNT2 WORD2

MOS WORD LISTING/ASCENDING SEQUENCE
COUNT3 WORD3

COUNT4 WORD4

DATE 80255 1613 PAGE 1

2 ACCORDANCE	1 ABOVE	2 AC	
1 ACS	9 ACCUMULATOR	1 ACROSS	
6 ADAPTER	1 ACTIONS	5 ACTUATOR	
5 AFTER	1 ADJUSTMENT	2 AFT	
5 AIR	1 AIRDOCTS	2 AIRLINES	
1 ALERT	1 ALIGNMENT	32 ALL	
4 ALLOW	1 ALSO	1 ALWAYS	
40 AM	3 ANGLE	1 ANNOUNCED	
5 ANNOUNCE	2 ANNOUNCEMENT	12 ANNOUNCES	
1 ANOTHER	2 APPLIED	5 APPLY	
22 ARE	4 ARMY	1 ARMY	
1 ARTILLERY	13 AS	1 ASSEMBLE	
2 ASSEMBLED	14 ASSEMBLY	5 ASSIST	
1 ASSISTANCE	5 ASSISTANTS	24 AT	
2 ATOMIC	6 ATTACHED	2 ATTACHING	
3 ATTACHMENT	12 AUTO	2 AUTO-ARM-BYPASS	
2 AUTO-SEQ	2 AUTOMATICALLY	1 AUX	
1 AVAILABLE	17 AZIMUTH	53 B	
1 BACK	6 BALL	1 BARS	
9 BASE	2 BATTERY	24 BE	
13 BEAM	3 BEAMS	9 BEEN	
3 BEFORE	1 BEGIN	4 BELCH	
4 BENEATH	1 BENT	1 BEZEL	
1 BINDERS	1 BLANK	3 BLEED	
1 BLOCK	1 BLUNTED	8 BOLT	
2 BOLTS	11 ROOM	2 BOX	
4 BREAKER	3 BREAKERS	1 BULK	
2 BUNGE	4 BURST	5 BY	
1 BYPASS	34 C	2 CALLED	
9 CABLES	1 CABLING	1 CAN	
1 CANNOT	2 CAREFULLY	4 CARTRIDGES	
1 CAUTION	8 CAUTIONS	2 CPALK	
25 CHAPTER	1 CHECKS	4 CHARGING	
7 CHECK	1 CHOKED	1 CHIPS	
2 CLOCK	2 CLEAN	7 CLAMP	
1 CLAWES	1 CLOSED	9 CLEAR	
3 CLOSE	9 COMPLETE	8 COLLUPN	
1 COMMUNICATIONS	1 COMPRESSION	1 COMPLETION	
1 COMPRESSED	5 CONDUCTED	4 CONDITIONED	
17 CONDITIONS	3 CONFIGURATION	12 CONFIDENCE	
1 CONFIDENCE/STANDARD	2 CONTINUE	4 CONNECTED	
3 CONNECTION	1 CORRECT	8 CONTACT	
6 CONTAINER	1 CORRECTED	14 CONTROL	
5 CORRECT	2 COUNTED	12 CCUNT	
21 COUNTDOWN	1 CRACKS	3 COVER	
3 COVERS	1 CREWMEN	1 CREW	
2 CREWMAN	2 CYLINDERS	4 CURB	
2 CURBSIDE	1 DAMAGE	2 CA	
1 DA-80		1 DATES	

4 DAVIT	1 DAYS	5 DC	1 DEFLECTOR	1 DEENERGIZE
14 DEFLECT	2 DEFECTS	1 DEFLECTOR	1 DEVICE	1 DENT
1 DEPENDING	8 DEPTH	6 DEVICE	16 DIRECTED	1 DEVICES
6 DIAL	71 DIRECT	5 DIRECTED	5 DISCONNECT	1 DIRECTING
1 DIRECTLY	2 DIRTY	1 DISTRIBUTION	1 DUCTS	4 DISPLAY
3 DISPLAYS	3 DISTANCE	1 DUCTS	1 EACH	11 DC
2 DLES	1 DUNE	1 EACH	1 ELAPSED	6 DOW
7 DRAW	1 DUCT	1 ELAPSED	1 EMBLACEMENT	12 DURING
3 DUTIES	18 E	1 EMBLACEMENT	8 ENFORCE	2 EDGE
3 EIGHT	77 EL	8 ENFORCE	23 ENV	2 ELECTRICAL
1 EXPLAC	10 EMBLACED	1 ESTABLISH	1 ERECT	25 END
3 ENERGIZE	1 ENERGIZED	1 EXCESSIVE	1 ERECT	1 ENLARGED
1 EXAMPLED	1 ENTERED	7 EXT	1 ESTABLISH	5 EQUIPMENT
1 EQUIPPED	1 ERB	1 EXT	1 EXCESSIVE	12 ERECTOR
7 ERECTOR-LAUNCHER	1 ERROR	1 EXTREME	1 EXCESSIVE	2 ETC
5 EVACUATE	1 EXAMPLE	1 FIELD	7 EXT	4 EXIST
4 EXPENDABLES	12 EXPLOSIVE	1 FILTER	1 EXTREME	3 EXTEND
3 EXTENDED	1 EXTERIOR	1 FIRE	1 FIELD	12 F
1 FAY	4 FAULTS	3 FITTINGS	1 FIELD	1 FIFTH
26 FIGURE	17 FIR	3 FOLLOWING	1 FIRE	3 FINAL
2 FIND	1 FITTING	1 FORWARD	3 FITTINGS	5 FIRING
15 FIRST	1 FLUSH	1 FULLY	3 FOLLOWING	1 FLAT
2 FLUID	2 FLOW	1 FULLY	1 FORWARD	27 FCR
4 FOREIGN	15 FRONT	1 GAGES	1 FULLY	10 FOUR
16 FROM	11 GAGE	1 GAGES	1 FULLY	9 FUNCTIONS
10 G	17 GIVEN	9 GROUND	1 FULLY	1 GASKETS
5 GENERATOR	1 GROOVES	13 GUIDE	1 FULLY	2 GREASE
3 GREASED	14 GUIDANCE	1 H-4211B	1 FULLY	1 GROUP
3 GSSG	1 H-416	1 HANDLED	1 FULLY	5 GUIDED
8 H	2 HANDLE	4 HAS	1 FULLY	1 HALF
1 HAND	4 HARDWARE	2 HEADSET	1 FULLY	1 HANDLES
5 HANDLING	2 HEADING	1 HELD	1 FULLY	5 HALF
1 HEAD	1 HEIGHT	21 HOISTING	1 FULLY	1 FEAT
2 HEATING	6 HOIST	2 HORN	1 FULLY	3 HIGH
2 HIGHEST	2 HOOK	5 HYD	1 FULLY	12 FCLO
1 HIGHS	1 HTRS	2 IAW	1 FULLY	1 HOTS
2 HIR	15 I	3 III	1 FULLY	7 HYDRAULIC
2 H4211B	3 II	1 INDICATE	1 FULLY	26 IF
2 IGNITER	1 INDEX	27 INDICATOR	1 FULLY	56 IN
2 INCH	2 INDICATING	1 INITIAL	1 FULLY	1 INDICATED
2 INDICATES	1 INITIAL	10 INSPECT	1 FULLY	5 INDICATORS
2 INDIVIDUAL	1 INSERT	11 INSTALLATION	1 FULLY	4 INITIATORS
17 INP	1 INSTALL	17 INT	1 FULLY	7 INSPECTION
1 INSPECTIONS	26 INSURE	5 INTERSTAGE	1 FULLY	1 INSTALLATION
7 INSTALLED	53 IS	5 IT	1 FULLY	2 INTERFACING
1 INTERFERE	4 IX	3 J	1 FULLY	4 ITEM
3 IRI	2 JET	1 JOINT	1 FULLY	20 JACK
1 IV	1 KINGPIN	1 LABEL	1 FULLY	22 JUS
2 JACKS			1 FULLY	1 LAID
2 K			1 FULLY	

COUNT1 WORD1

COUNT2 WORD2

COUNT3 WORD3

COUNT4 WORD4

1 LAMPS
 7 LAUNCH
 2 LCG
 1 LEG
 23 LEVEL
 9 LIFT
 1 LIMITS
 4 LEAD
 1 LOCKNUT
 1 LOOSE
 2 MAIN
 1 MANAGEMENT
 17 MARK
 20 MATTING
 1 MEASUREMENT
 1 MILS
 1 MISSION
 1 MONITOR
 1 MOVE
 2 M57
 3 NECESSARY
 2 NONEXPLOSIVE
 1 NOTES
 2 NUTS
 13 OFF
 1 OR/159
 1 OPERATES
 54 OPERATOR
 2 OPTIONAL
 1 OTHER
 1 PADS
 4 PANEL
 6 PARAGRAPHS
 2 PENCIL
 1 PERFORMS
 1 PHYSICAL
 5 PINS
 1 PLATFORM
 1 PPGS
 1 PORTIONS
 27 POWER
 2 PREFIRE
 1 PRESET
 2 PREVENTIVE
 4 PROCEDURE
 1 PROPER
 1 PROTECTOR-SLING
 30 PTS
 2 PUSH
 1 PAISE

1 LAN OS
 12 LAUNCHER
 2 LEAD
 2 LEGGED
 4 LEVELING
 2 LIGHTED
 10 LINE
 3 LOCAL
 2 LOCKPIN
 7 LOW
 1 MAINTAIN
 18 MANUAL
 4 MAST
 4 MATTER
 18 MEASURES
 10 MINUTES
 6 MOD
 1 MORE
 3 MOVING
 17 NAM
 3 NEEDED
 31 NOT
 6 NOTIFIED
 1 OBJECT
 2 OIL
 6 ONE
 3 OPERATING
 16 OPERATOR'S
 50 OR
 29 OUT
 5 PAGE
 1 PANELS
 5 PASS
 17 PERFORM
 1 PERSHING
 1 PICTURE
 17 PLA
 2 PLATOON
 12 POINT
 1 PORTS
 1 PRE-REMOTE
 8 PREPARE
 9 PRESS
 2 PREVIOUSLY
 5 PROCEDURES
 2 PROPERLY
 10 PS
 2 PTS/PS
 1 PUT
 1 RAISING

17 LAS
 1 LAUNCH.
 1 LEAKS
 2 LEGS
 2 LEVER
 1 LIGHTS
 1 LINK
 2 LOCATE
 1 LOCKS
 10 LOWER
 4 MAINTENANCE
 23 MAR
 11 MATED
 3 MAY
 3 MEASURING
 53 MISSILE
 7 MODE
 3 MOTOR
 1 MSL
 2 NCCIC
 1 NICKS
 10 NOTE
 6 NOTIFY
 21 OBSERVE
 2 OMIT
 3 OPEN
 5 OPERATION
 1 OPERATORS
 1 ORDERING
 1 COVER
 26 PAGES
 17 PAP
 2 PCC
 19 PERFORMANCE
 8 PERSONNEL
 1 PIN
 3 PLACE
 1 PLUG
 2 PORT
 23 POSITION
 5 PRECAUTIONS
 5 PREPARED
 7 PRESSURE
 17 FRI
 3 PROGRAMMER
 3 PROPULSION
 1 PSI
 1 PULL
 17 GUA
 1 RATHER

1 LAST
 1 LAY
 3 LEAST
 2 LESS
 1 LEVERED
 1 LINE
 15 LIT
 5 LCK
 1 LONG
 2 LOWEST
 9 MAKE
 1 MARCH
 1 MATED/WHD
 11 MEASURE
 3 MECHANISM
 2 MISSILE'S
 6 MOUNTAINARILY
 2 MOUNTED
 4 M556
 1 NEAR
 1 NITROGEN
 8 NOTED
 2 ASN
 78 CF
 39 CN
 12 OPERATE
 5 OPERATIONS
 1 OPTICN
 1 ORGANIZATIONAL
 1 OVERPRESSURE
 1 PAINT
 22 PARAGRAPH
 2 FEAR
 2 PERFORMED
 2 PERTAINING
 1 PLYED
 1 PLACEMENT
 1 P
 1 POSITION
 5 POSITIONING
 1 PREERECTION
 1 PREPOSITIONED
 2 PREUSE
 1 PRISM
 1 PROGRAMMER-TEST
 1 PROTECTIVE
 2 PSIG
 7 PUMP
 4 QUICK
 5 READINESS

9 PENDING
 1 RE
 13 RE
 1 RE
 1 REPORT
 3 FT
 1 RE
 16 RING
 1 ROCKET
 10 RUPCE
 4 S
 1 SC
 15 SECOND
 3 SEWING
 9 SELECTOR
 6 SEQUENTIAL
 4 SETTINGS
 1 SHOUL
 2 SIDE
 2 SILLIATOR
 1 SKIET
 7 SLOPE
 1 SOCKET
 3 SOURCE
 3 SPRING
 1 STAGES
 16 STAIRS
 1 STATUS
 2 STORE
 3 SUBTRACT
 1 SUPPORTED
 6 SUSPENDED
 14 SWITC
 23 TAB
 1 TAKE
 1 TERN
 7 TEST
 255 THE
 4 THIS
 32 THROUGH
 7 TIGHTEN
 47 TM
 2 TOP
 1 TRACTOR
 3 TBC
 2 UNIT
 23 UNTIL
 1 UPPEP
 3 VALVE
 1 VERIFICATION

5 RE
 1 RE
 8 RELEASE
 4 REMOVAL
 7 REQUIRED
 1 RETR
 1 REVERSAL
 3 RINGS
 1 RCD
 1 ROTATE
 1 SAFE
 17 SCA
 77 SECTION
 19 SEE
 2 SEPARATION
 4 SERVICES
 1 SHACKLE
 6 SHOA
 1 SIGHT
 1 SITE
 11 SLA
 13 SLOWLY
 2 SOFT
 2 SPECIAL
 2 SPRINGS
 8 STAND
 12 START
 1 STEADY
 5 STRUCTURAL
 3 SUPERVISE
 6 SURE
 2 SWING
 1 T-4127A
 22 TABLE
 3 TAPE
 1 TENSION
 2 TESTING
 2 THEIR
 1 THOROUGH
 1 THRUST
 7 TILT
 14C TO
 5 TORQUE
 1 TRAILER
 1 UNCORRECTED
 1 UNLIGHTED
 3 UP
 5 USE
 1 VALVE
 1 VERIFIED

1 REAR
 4 REFER
 1 RELEASED
 11 REMOVE
 1 REQUIREMENTS
 3 RETRACT
 2 RFD
 4 ROAD
 1 ROLLER
 1 ROUND
 18 SAFETY
 1 SCRATCH
 6 SECTIONS
 2 SELECT
 9 SEQUENCE
 20 SET
 1 SHAFT
 3 SHUT
 3 SIGNAL
 1 SIZE
 9 SLING
 1 SMOOTHLY
 1 SOUND
 2 SPECIFIED
 3 ST-120
 8 STAIRDARD
 7 STATION
 1 STOP
 1 STRUTS
 6 SUPERVISOR
 9 SURFACE
 35 SWITCH
 1 T-4191
 2 TABLES
 12 TASK
 2 TERMINATE
 3 THAN
 2 THREADS
 10 THE
 1 TIE
 7 TIME
 10 TOOLKIT
 2 TOPQUE
 6 TRANSFER
 1 UNDAAGED
 1 UNPACKAGE
 1 UPHILL
 3 USED
 4 VANE
 17 VERIFY

3 H.
 15 REF
 2 REMAIN
 5 REMOVED
 1 RESPECT
 2 RETRACTED
 4 RIGHT
 2 RIGSIDE
 3 ROLLERS
 1 RUNNING
 3 SAME
 1 SCREW
 4 SECURE
 2 SELECTED
 5 SEQUENCES
 1 SEYSCREW
 1 SHIELDS
 1 SHUTDOWN
 1 SIGNALING
 2 SKILL
 1 SLINGS
 1 SO
 1 SCUNDS
 6 SPLICE
 20 STAGE
 1 STAIRDARD/CONFIDENCE
 2 STATION/POWER
 2 STCPS
 1 ST120
 3 SUPPORT
 6 SUPRACES
 4 SWITCHES
 6 T-4191A
 1 TAYLPLUG
 1 TECHNICAL
 1 TERRAIN
 41 THAT
 1 THEY
 1 THREE
 2 TIGHT
 1 TIRES
 7 TCCLS
 1 TCRUING
 11 TURN
 1 UNERSIDE
 4 UNPACKAGING
 1 UPLOCK
 9 USING
 2 VEHICLE
 1 VERTICAL

1 VIEW
8 WARRINGS
4 WEIGHT
9 WHEELS
22 WILL
46 WITH
25 WRECKER

COUNT 2 WORDS

2 VIS E
2 WAS
1 WERE
39 WHEN
1 WINDOW
13 WITHIN
4 WRENCH
2 WSS

COUNT 3 WORDS

1 WAIT
1 WASHER
6 WHO
1 WHERE
1 WIPE
10 WITHOUT
2 WRITE
18 YOU

COUNT 4 WORDS

24 WARPEAC
2 WEAPONS
1 WHEEL
1 WHICH
1 WIRED
1 WCRK
22 WS
1 ZEROED

255 THE
76 CF
356 IN
53 MIS
41 THAT
35 SWITCH
31 NOT
28 STAGE
26 FIGURE
25 CHAPTER
24 BE
23 MAN
22 ARE
22 WILL
21 COSEWNE
19 CREWMEN
18 MARJAL
15 YOU
17 GIVEN
17 MARK
17 PLS
17 VERIFY
16 RING
15 I
14 CONTROL
13 AS
13 OFF
12 ANNOUNCES
12 COUNT
12 F
12 PRINT
11 DO
11 MEASURE
11 REPLACED
10 LINE
10 PS
10 WITHOUT
9 BEEN
9 GEOUND
9 SELECTOR
9 USING
8 CHECKS
8 CONTACT
8 H
8 READING
8 THREE
7 CIRCUIT
7 HYDRAULIC
7 LOW
7 REQUIPED

170 AND
77 EL
54 OPERATOR
50 OR
40 AN
44 C
30 PTS
27 FOR
26 IF
25 END
24 WARHEAD
23 POSITION
22 JUS
22 WS
20 JACK
19 PERFORMANCE
18 MEASURES
17 AZIMUTH
17 IMP
17 NAM
17 PRI
16 DIRECTED
16 STANDARDS
15 LIT
14 DEFECT
13 BEAM
13 REFERENCES
12 ARU
12 DURING
12 HOLD
12 START
11 GAGE
11 REMOVE
10 FOUR
10 LOWER
10 ROPES
9 ACCUMULATOR
9 CABLES
9 LIFT
9 SEQUENCE
9 WHEELS
8 CLEAR
8 CRADLE
8 NOTED
8 RELEASE
8 TRANSFER
7 CLAMP
7 INSPECTION
7 MODE
7 SLOPE

143 A
77 SECTIO
53 B
47 TH
39 CN
32 ALL
29 CUT
27 INDICATOR
26 INSURE
25 WRECKER
23 ENV
23 TAR
22 PAKOGRAPH
21 COUNTDOWN
20 PAYING
19 REFERENCE
18 SAFETY
17 CONDITIONS
17 INT
17 PAP
17 CUA
16 FROM
15 FIRST
15 SECOND
14 GUIDANCE
13 CABLE
13 WITHIN
12 AUTO
12 ERECTOR
12 LAUNCHER
12 TASK
11 INSTALLATION
11 SLA
10 G
10 MINUTES
10 THEN
9 ACTION
9 COMPLETE
9 MAKE
9 SLING
8 BOLT
8 COLUMN
8 DEPTH
8 PERSONNEL
8 STAND
8 WARNINGS
7 ERECTOR-LAUNCHER
7 INSTALLED
7 PRESSURE
7 STATION

140 TO
71 DIRECT
53 IS
46 WITH
39 WHEN
32 THROUGH
29 C
27 FCNER
26 PAGES
24 AT
23 LEVEL
23 LAYIL
22 TABLE
21 HOISTING
20 SET
18 E
18 SEF
17 FIR
17 LAS
17 PERFCRN
17 SCA
16 OPERATOR'S
15 FRONT
14 ASSEMBLY
14 SYSTEM
13 GUIDE
12 CLEANIDENCE
12 EXPLOSIVE
12 OPERATE
11 BODY
11 PATED
11 TURN
10 INSPECT
10 ACTE
10 TOOLKIT
9 EASE
9 FUNCTIONS
9 PRESS
9 SURFACE
8 CAUTIONS
8 CONDITION
8 ENFORCE
8 PREPARE
8 STANDARD
7 CHECK
7 EXT
7 LAUNCH
7 PUMP
7 TEST

2 ACCORDANCE
 2 APPROVED
 2 AUTHORIZED
 2 AUTOMATICALLY
 2 BOLTS
 2 CAREFULLY
 2 CHECK
 2 CREWMAN
 2 DATA
 2 DRAW
 2 FTRD
 2 HANDLE
 2 HIGHEST
 2 H42119
 2 INDICATES
 2 JACKS
 2 LEAD
 2 LEVER
 2 LOWEST
 2 NUTS
 2 PCC
 2 PERTAINING
 2 PREUSE
 2 PSIG
 2 RETRACTED
 2 SKILL
 2 SPRINGS
 2 SWING
 2 TRIP
 2 TOP
 2 VISIBLE
 2 WASS
 1 ABOVE
 1 ADJUST
 1 ALIGNMENT
 1 ANOTHER
 1 ASSISTANCE
 1 BACK
 1 BEZEL
 1 BLOCK
 1 BUT
 1 CAN
 1 CHIPS
 1 CM2
 1 COMPRESSION
 1 CONTINUITY
 1 CREWMEN
 1 DAYS

2 A
 2 AIR
 2 AUTO-ARREST-BYPASS
 2 BATTERY
 2 BOX
 2 CARTRIDGE
 2 CLEAN
 2 CURSIVE
 2 DEFECTS
 2 EDGE
 2 FLUID
 2 HEADING
 2 HOOK
 2 IAM
 2 INDICATING
 2 JET
 2 LEGGED
 2 LIGHTED
 2 MAIN
 2 MCOIC
 2 OIL
 2 PEAR
 2 PLATOON
 2 PREVENTIVE
 2 PTS/PS
 2 PFB
 2 SEPARATION
 2 SCFT
 2 STATION/POWER
 2 TABLES
 2 THREADS
 2 TORQUED
 2 WAS
 1 ACROSS
 1 ADJUSTMENT
 1 ALSO
 1 ARMY
 1 AUX
 1 BARS
 1 BINDERS
 1 BLUNTED
 1 BYPASS
 1 CANNOT
 1 CROCKED
 1 COMMUNICATIONS
 1 CONDUCTING
 1 CORRECTICNS
 1 DA-80
 1 DEENERGIZE

2 AIRLINES
 2 ASS
 2 AUTO-SEO
 2 BCC
 2 BUNDLE
 2 CHALK
 2 CONNECTIONS
 2 CYLINDERS
 2 DIRT
 2 ELECTRICAL
 2 FORM
 2 HEADSET
 2 HORN
 2 ICHITER
 2 INDIVIDUAL
 2 K
 2 LEGS
 2 LOCATE
 2 MISSILE'S
 2 NONEXPLOSIVE
 2 OMIT
 2 PENCIL
 2 PORT
 2 PREVIOUSLY
 2 PUSH
 2 ROADSIDE
 2 SIDE
 2 SPECIAL
 2 STOPS
 2 TERMINATE
 2 TIGHT
 2 UNIT
 2 WEAPONS
 1 ACS
 1 AIRDUCTS
 1 AIRDUCED
 1 ARTILLERY
 1 AVAILABLE
 1 BEGIN
 1 BLANK
 1 BRUSH
 1 CABLING
 1 CAUTION
 1 CLAMPS
 1 COMPLETION
 1 CONFIDENCE/STANDARD
 1 CRACKS
 1 CARGO
 1 DEFLECTOR

2 ANNOUNCEMENT
 2 ATOMIC
 2 AUTOMATIC
 2 BETWEEN
 2 CABLED
 2 CHIEF
 2 COUNTED
 2 CA
 2 CCES
 2 ETC
 2 GREASE
 2 HEATING
 2 FTR
 2 INCH
 2 INTERFACING
 2 LCG
 2 LESS
 2 LOCKPIN
 2 MOUNTED
 2 NSN
 2 OPTIONAL
 2 PERFORMED
 2 PREFIRE
 2 PROPERLY
 2 REPAIR
 2 SELECT
 2 SIMULATGR
 2 SPECIFIED
 2 STORE
 2 TESTING
 2 TIGHTEN
 2 VEHICLE
 2 WRITE
 1 ACTIONS
 1 ALINE
 1 ANNOUNCED
 1 ASSEMBLE
 1 AWAY
 1 BENT
 1 BLAST
 1 BULK
 1 CALIBRATION
 1 CHAPTERS
 1 CLOSED
 1 COMPRESSED
 1 CONTINUE
 1 CREW
 1 GATES
 1 CENT

1	DEPENDING	1	DIRECTING	1	DIRECTLY
1	DISTRIBUTION	1	COOK	1	DUCT
1	DUCTS	1	ELAPSED	1	EMPLACE
1	EMPLOYMENT	1	ENGAGED	1	ENTANGLED
1	ENTERED	1	ERB	1	ERECT
1	EXACTOR	1	EXAMPLE	1	EXCESSIVE
1	EXTERIOR	1	FAM	1	FAULTS
1	FIELD	1	FILTER	1	FIRE
1	FITTING	1	FLUSH	1	FORWARD
1	FULLY	1	GASKETS	1	GROGUES
1	GROOVES	1	GSG	1	H-416
1	H-4211B	1	HAND	1	HANDLED
1	HANDLES	1	HEAT	1	HEIGHT
1	HELD	1	HTRS	1	HTRS
1	INDEX	1	INDICATED	1	INITIAL
1	INITIATOR	1	INSPECTIONS	1	INSTALL
1	INSTALLATION	1	INTERFERING	1	INTU
1	IV	1	KINGPIN	1	LABEL
1	LAD	1	LARYNDS	1	LAST
1	LAUNCHING	1	LEAKS	1	LEG
1	LEVERED	1	LIKE	1	LIMITS
1	LINK	1	LOCKS	1	LONG
1	LOOSE	1	MANAGEMENT	1	MARCH
1	LOTTED/HQ	1	MILS	1	MISSION
1	MONITOR	1	MOVE	1	MSL
1	NEAR	1	NITROGEN	1	NOTES
1	OBJECT	1	OPERATES	1	OPERATORS
1	OPTION	1	ORGANIZATIONAL	1	OTHER
1	OVERPRESSURE	1	PAIN	1	PANELS
1	PERFORMS	1	PHYSICAL	1	PICTURE
1	PIN	1	PLACEMENT	1	PLATFORM
1	PLUG	1	PMCS	1	PORTION
1	PORTIONS	1	PRE-REMOTE	1	PREERECTION
1	PREPOSITIONED	1	PRISM	1	PROGRAMMER-TEST
1	PROPER	1	PROTECTOR-SLING	1	PSY
1	PULL	1	RAISE	1	RALDING
1	RATHER	1	RECORD	1	RECOVER
1	RELEASED	1	REPORT	1	REQUIREMENTS
1	RESPECT	1	REUSED	1	REVERSAL
1	ROCKET	1	ROLLER	1	RECTATE
1	ROUND	1	SAFE	1	SC
1	SCRATCH	1	SETSOREM	1	SPACKLE
1	SHEFT	1	SHOULD	1	SHUTDOWN
1	SIGHT	1	SITE	1	SIZE
1	SKIRT	1	SMOOTHLY	1	SC
1	SOCKET	1	SOUNDS	1	STAGES
1	STANDARD/CONFIDENCE	1	STEADY	1	STCP
1	STRAITS	1	SUPPORTED	1	T-4127A
1	T-4191	1	TAKE	1	TECHNICAL
1	TEN	1	TERRAIN	1	THEY

COUNT 2
1 THROUGH
1 TO
1 UNPACKED
1 UNPACKED
1 VERIFICATION
1 WAIT
1 WHERE

COUNT 3
1 TRAIL
1 TRAIL
1 UNDERSIDE
1 UNLOCK
1 VERIFIED
1 WASHERS
1 WHICH
1 WIRED

COUNT 4
1 TIE
1 TRAIL
1 UNLIGHTE
1 UPPER
1 VERTICAL
1 WERE
1 WINDOW
1 WORK

COUNT 5
1 TIRES
1 UNCORRECTED
1 UNPACKAGE
1 VALVES
1 VIEW
1 WHEEL
1 WIFE
1 ZEROED



HEADQUARTERS

DATA CONTROL NUMBER

JOB NO / PROJECT NO

UNITED STATES ARMY TRAINING AND DOCTRINE COMMAND

FORT MONROE, VIRGINIA 23051

JAN 6 1981



"WORD CRIT-MOS-15E SKILL LEVEL 2"

PREPARED BY: OPERATIONS DIV. DRFO

ATDP FORM 100-1

Feb 80 edition may be used until exhausted.

PY ___ OF ___ COPIES

	1000	1001	1002	1003	1004	1005	1006	1007	1008	1009	1010	1011	1012	1013	1014	1015	1016	1017	1018	1019	1020	1021	1022	1023	1024	1025	1026	1027	1028	1029	1030	1031	1032	1033	1034	1035	1036	1037	1038	1039	1040	1041	1042	1043	1044	1045	1046	1047	1048	1049	1050	1051	1052	1053	1054	1055	1056	1057	1058	1059	1060	1061	1062	1063	1064	1065	1066	1067	1068	1069	1070	1071	1072	1073	1074	1075	1076	1077	1078	1079	1080	1081	1082	1083	1084	1085	1086	1087	1088	1089	1090	1091	1092	1093	1094	1095	1096	1097	1098	1099	1100	1101	1102	1103	1104	1105	1106	1107	1108	1109	1110	1111	1112	1113	1114	1115	1116	1117	1118	1119	1120	1121	1122	1123	1124	1125	1126	1127	1128	1129	1130	1131	1132	1133	1134	1135	1136	1137	1138	1139	1140	1141	1142	1143	1144	1145	1146	1147	1148	1149	1150	1151	1152	1153	1154	1155	1156	1157	1158	1159	1160	1161	1162	1163	1164	1165	1166	1167	1168	1169	1170	1171	1172	1173	1174	1175	1176	1177	1178	1179	1180	1181	1182	1183	1184	1185	1186	1187	1188	1189	1190	1191	1192	1193	1194	1195	1196	1197	1198	1199	1200	1201	1202	1203	1204	1205	1206	1207	1208	1209	1210	1211	1212	1213	1214	1215	1216	1217	1218	1219	1220	1221	1222	1223	1224	1225	1226	1227	1228	1229	1230	1231	1232	1233	1234	1235	1236	1237	1238	1239	1240	1241	1242	1243	1244	1245	1246	1247	1248	1249	1250	1251	1252	1253	1254	1255	1256	1257	1258	1259	1260	1261	1262	1263	1264	1265	1266	1267	1268	1269	1270	1271	1272	1273	1274	1275	1276	1277	1278	1279	1280	1281	1282	1283	1284	1285	1286	1287	1288	1289	1290	1291	1292	1293	1294	1295	1296	1297	1298	1299	1300	1301	1302	1303	1304	1305	1306	1307	1308	1309	1310	1311	1312	1313	1314	1315	1316	1317	1318	1319	1320	1321	1322	1323	1324	1325	1326	1327	1328	1329	1330	1331	1332	1333	1334	1335	1336	1337	1338	1339	1340	1341	1342	1343	1344	1345	1346	1347	1348	1349	1350	1351	1352	1353	1354	1355	1356	1357	1358	1359	1360	1361	1362	1363	1364	1365	1366	1367	1368	1369	1370	1371	1372	1373	1374	1375	1376	1377	1378	1379	1380	1381	1382	1383	1384	1385	1386	1387	1388	1389	1390	1391	1392	1393	1394	1395	1396	1397	1398	1399	1400	1401	1402	1403	1404	1405	1406	1407	1408	1409	1410	1411	1412	1413	1414	1415	1416	1417	1418	1419	1420	1421	1422	1423	1424	1425	1426	1427	1428	1429	1430	1431	1432	1433	1434	1435	1436	1437	1438	1439	1440	1441	1442	1443	1444	1445	1446	1447	1448	1449	1450	1451	1452	1453	1454	1455	1456	1457	1458	1459	1460	1461	1462	1463	1464	1465	1466	1467	1468	1469	1470	1471	1472	1473	1474	1475	1476	1477	1478	1479	1480	1481	1482	1483	1484	1485	1486	1487	1488	1489	1490	1491	1492	1493	1494	1495	1496	1497	1498	1499	1500
2	1000	1001	1002	1003	1004	1005	1006	1007	1008	1009	1010	1011	1012	1013	1014	1015	1016	1017	1018	1019	1020	1021	1022	1023	1024	1025	1026	1027	1028	1029	1030	1031	1032	1033	1034	1035	1036	1037	1038	1039	1040	1041	1042	1043	1044	1045	1046	1047	1048	1049	1050	1051	1052	1053	1054	1055	1056	1057	1058	1059	1060	1061	1062	1063	1064	1065	1066	1067	1068	1069	1070	1071	1072	1073	1074	1075	1076	1077	1078	1079	1080	1081	1082	1083	1084	1085	1086	1087	1088	1089	1090	1091	1092	1093	1094	1095	1096	1097	1098	1099	1100	1101	1102	1103	1104	1105	1106	1107	1108	1109	1110	1111	1112	1113	1114	1115	1116	1117	1118	1119	1120	1121	1122	1123	1124	1125	1126	1127	1128	1129	1130	1131	1132	1133	1134	1135	1136	1137	1138	1139	1140	1141	1142	1143	1144	1145	1146	1147	1148	1149	1150	1151	1152	1153	1154	1155	1156	1157	1158	1159	1160	1161	1162	1163	1164	1165	1166	1167	1168	1169	1170	1171	1172	1173	1174	1175	1176	1177	1178	1179	1180	1181	1182	1183	1184	1185	1186	1187	1188	1189	1190	1191	1192	1193	1194	1195	1196	1197	1198	1199	1200	1201	1202	1203	1204	1205	1206	1207	1208	1209	1210	1211	1212	1213	1214	1215	1216	1217	1218	1219	1220	1221	1222	1223	1224	1225	1226	1227	1228	1229	1230	1231	1232	1233	1234	1235	1236	1237	1238	1239	1240	1241	1242	1243	1244	1245	1246	1247	1248	1249	1250	1251	1252	1253	1254	1255	1256	1257	1258	1259	1260	1261	1262	1263	1264	1265	1266	1267	1268	1269	1270	1271	1272	1273	1274	1275	1276	1277	1278	1279	1280	1281	1282	1283	1284	1285	1286	1287	1288	1289	1290	1291	1292	1293	1294	1295	1296	1297	1298	1299	1300	1301	1302	1303	1304	1305	1306	1307	1308	1309	1310	1311	1312	1313	1314	1315	1316	1317	1318	1319	1320	1321	1322	1323	1324	1325	1326	1327	1328	1329	1330	1331	1332	1333	1334	1335	1336	1337	1338	1339	1340	1341	1342	1343	1344	1345	1346	1347	1348	1349	1350	1351	1352	1353	1354	1355	1356	1357	1358	1359	1360	1361	1362	1363	1364	1365	1366	1367	1368	1369	1370	1371	1372	1373	1374	1375	1376	1377	1378	1379	1380	1381	1382	1383	1384	1385	1386	1387	1388	1389	1390	1391	1392	1393	1394	1395	1396	1397	1398	1399	1400	1401	1402	1403	1404	1405	1406	1407	1408	1409	1410	1411	1412	1413	1414	1415	1416	1417	1418	1419	1420	1421	1422	1423	1424	1425	1426	1427	1428	1429	1430	1431	1432	1433	1434	1435	1436	1437	1438	1439	1440	1441	1442	1443	1444	1445	1446	1447	1448	1449	1450	1451	1452	1453	1454	1455	1456	1457	1458	1459	1460	1461	1462	1463	1464	1465	1466	1467	1468	1469	1470	1471	1472	1473	1474	1475	1476	1477	1478	1479	1480	1481	1482	1483	1484	1485	1486	1487	1488	1489	1490	1491	1492	1493	1494	1495	1496	1497	1498	1499	1500

1039	14.3					
1040	15.1	11.1	14.1			
1041	15.2					
1042	15.3					
1043	16.1	14				
1044	17.1					
1045	17.1	14.1	16.1			
1046	17.1					
1047	18.1	18.2				
1048	18.2					
1049	19.1	19.1	14.1	50.1	142.1	
1050	19.1					
1051	20.1	17.1				
1052	20.2					
1053	20.3					
1054	21.1	3.3	166.1	147.16	138.2	114.2
1055	21.2	7.1			92.7	91.9
1056	22.1	30.2				54.1
1057	22.2	119.1	114.1	97.6	75.1	35.1
1058	22.3	8.2	7.1	3.1	1.1	30.1
1059	23.1					28.1
1060	23.2					
1061	23.3					
1062	24.1	3.2	164.3	81.4	54.1	46.1
1063	24.2	18.1	114.1	30.1	14.1	
1064	24.3	10.1				12.1
1065	25.1	1.1	142.9	119.1		
1066	25.2					
1067	25.3					
1068	26.1	54.1	20.2	12.1	117.6	
1069	26.2					
1070	26.3					
1071	27.1					
1072	27.2					
1073	27.3					
1074	28.1					
1075	28.2					
1076	28.3					
1077	29.1	12.1				
1078	29.2	30.1	164.1	114.1		
1079	29.3	1.1	142.9	119.1		
1080	30.1					
1081	30.2					
1082	30.3					
1083	31.1	87.5	54.1	162.1		
1084	31.2	36.3	116.2	99.2	162.5	
1085	31.3	14.5	34.3	30.1	167.3	117.1
1086	32.1	161.5				38.1
1087	32.2					
1088	32.3	64.1				
1089	33.1	119.1				
1090	33.2	90.1	34.1	16.2		
1091	33.3	16.15	167.1	115.1	33.1	34.2

1	1201	163.6					
2	1202	163.6					
3	1203	163.6					
4	1204	163.6					
5	1205	163.6					
6	1206	163.6					
7	1207	163.6					
8	1208	163.6					
9	1209	163.6					
10	1210	163.6					
11	1211	163.6					
12	1212	163.6					
13	1213	163.6					
14	1214	163.6					
15	1215	163.6					
16	1216	163.6					
17	1217	163.6					
18	1218	163.6					
19	1219	163.6					
20	1220	163.6					
21	1221	163.6					
22	1222	163.6					
23	1223	163.6					
24	1224	163.6					
25	1225	163.6					
26	1226	163.6					
27	1227	163.6					
28	1228	163.6					
29	1229	163.6					
30	1230	163.6					
31	1231	163.6					
32	1232	163.6					
33	1233	163.6					
34	1234	163.6					
35	1235	163.6					
36	1236	163.6					
37	1237	163.6					
38	1238	163.6					
39	1239	163.6					
40	1240	163.6					
41	1241	163.6					
42	1242	163.6					
43	1243	163.6					
44	1244	163.6					
45	1245	163.6					
46	1246	163.6					
47	1247	163.6					
48	1248	163.6					
49	1249	163.6					
50	1250	163.6					
51	1251	163.6					
52	1252	163.6					
53	1253	163.6					
54	1254	163.6					
55	1255	163.6					
56	1256	163.6					
57	1257	163.6					
58	1258	163.6					
59	1259	163.6					
60	1260	163.6					
61	1261	163.6					
62	1262	163.6					
63	1263	163.6					
64	1264	163.6					
65	1265	163.6					
66	1266	163.6					
67	1267	163.6					
68	1268	163.6					
69	1269	163.6					
70	1270	163.6					
71	1271	163.6					
72	1272	163.6					
73	1273	163.6					
74	1274	163.6					
75	1275	163.6					
76	1276	163.6					
77	1277	163.6					
78	1278	163.6					
79	1279	163.6					
80	1280	163.6					
81	1281	163.6					
82	1282	163.6					
83	1283	163.6					
84	1284	163.6					
85	1285	163.6					
86	1286	163.6					
87	1287	163.6					
88	1288	163.6					
89	1289	163.6					
90	1290	163.6					
91	1291	163.6					
92	1292	163.6					
93	1293	163.6					
94	1294	163.6					
95	1295	163.6					
96	1296	163.6					
97	1297	163.6					
98	1298	163.6					
99	1299	163.6					
100	1300	163.6					

16296	16297	16298	16299	16300	16301	16302	16303	16304	16305	16306	16307	16308	16309	16310	16311	16312	16313	16314	16315	16316	16317	16318	16319	16320	16321	16322	16323	16324	16325	16326	16327	16328	16329	16330	16331	16332	16333	16334	16335	16336	16337	16338	16339	16340	16341	16342	16343	16344	16345	16346	16347	16348	16349	16350	16351	16352	16353	16354	16355	16356	16357	16358	16359	16360	16361	16362	16363	16364	16365	16366	16367	16368	16369	16370	16371	16372	16373	16374	16375	16376	16377	16378	16379	16380	16381	16382	16383	16384	16385	16386	16387	16388	16389	16390	16391	16392	16393	16394	16395	16396	16397	16398	16399	16400	16401	16402	16403	16404	16405	16406	16407	16408	16409	16410	16411	16412	16413	16414	16415	16416	16417	16418	16419	16420	16421	16422	16423	16424	16425	16426	16427	16428	16429	16430	16431	16432	16433	16434	16435	16436	16437	16438	16439	16440	16441	16442	16443	16444	16445	16446	16447	16448	16449	16450	16451	16452	16453	16454	16455	16456	16457	16458	16459	16460	16461	16462	16463	16464	16465	16466	16467	16468	16469	16470	16471	16472	16473	16474	16475	16476	16477	16478	16479	16480	16481	16482	16483	16484	16485	16486	16487	16488	16489	16490	16491	16492	16493	16494	16495	16496	16497	16498	16499	16500
16296	16297	16298	16299	16300	16301	16302	16303	16304	16305	16306	16307	16308	16309	16310	16311	16312	16313	16314	16315	16316	16317	16318	16319	16320	16321	16322	16323	16324	16325	16326	16327	16328	16329	16330	16331	16332	16333	16334	16335	16336	16337	16338	16339	16340	16341	16342	16343	16344	16345	16346	16347	16348	16349	16350	16351	16352	16353	16354	16355	16356	16357	16358	16359	16360	16361	16362	16363	16364	16365	16366	16367	16368	16369	16370	16371	16372	16373	16374	16375	16376	16377	16378	16379	16380	16381	16382	16383	16384	16385	16386	16387	16388	16389	16390	16391	16392	16393	16394	16395	16396	16397	16398	16399	16400	16401	16402	16403	16404	16405	16406	16407	16408	16409	16410	16411	16412	16413	16414	16415	16416	16417	16418	16419	16420	16421	16422	16423	16424	16425	16426	16427	16428	16429	16430	16431	16432	16433	16434	16435	16436	16437	16438	16439	16440	16441	16442	16443	16444	16445	16446	16447	16448	16449	16450	16451	16452	16453	16454	16455	16456	16457	16458	16459	16460	16461	16462	16463	16464	16465	16466	16467	16468	16469	16470	16471	16472	16473	16474	16475	16476	16477	16478	16479	16480	16481	16482	16483	16484	16485	16486	16487	16488	16489	16490	16491	16492	16493	16494	16495	16496	16497	16498	16499	16500

2	100.2								
2	100.2								
2	100.3	12.1	142.8	10.1	10.1				
2	100.3								
2	100.4	0.1	01.1	12.1					
2	100.4								
2	100.1								
2	100.2	16.2	142.1						
2	100.1								
2	100.2	110.2	114.1	34.5	30.1				
2	100.1								
2	100.1								
2	100.1	115.1							
2	100.3	12.3	142.5						
2	100.2	162.2							
2	100.3	17.1	16.1	5.1	6.1	3.2			
2	100.3	3.3	1.2						
2	100.1	130.1	66.2	12.1	7.2				
2	100.1	75.1							
2	100.1								
2	100.1	115.1							
2	100.1	10.1							
2	100.3	13.1	13.1	46.2	12.3	7.2			
2	100.2	34.2	20.1	54.1	142.5				
2	100.3	34.1							
2	100.1	75.1							
2	100.1	32.7							
2	100.1	75.1							
2	100.3	162.3	80.1						
2	100.3	142.3							
2	100.2	162.2							
2	100.3	14.3	80.2	36.3	30.4	142.10	114.2		
2	100.1	36.1							
2	100.7	46.1							
2	100.1	14.1	14.1	115.2	81.1	75.1	34.1	144.1	142.7
2	100.1								
2	100.1								
2	100.15	82.15	91.1	12.4					
2	100.1	42.2							
2	100.1	24.1	142.13						
2	100.1	20.1							
2	100.1	14.1							
2	100.2	162.2							
2	100.1	160.1	75.1						
2	100.1	80.1							
2	100.1	12.1							
2	100.2	142.2	12.1						
2	100.1	12.1							
2	100.1	75.1	142.1						
2	100.1	142.1							



1	AD	12,1							
2	AD	12,1	14,2,7						
3	AD	12,1							
4	AD	12,1							
5	AD	12,1							
6	AD	12,1							
7	AD	12,1							
8	AD	12,1							
9	AD	12,1							
10	AD	12,1							
11	AD	12,1							
12	AD	12,1							
13	AD	12,1							
14	AD	12,1							
15	AD	12,1							
16	AD	12,1							
17	AD	12,1							
18	AD	12,1							
19	AD	12,1							
20	AD	12,1							
21	AD	12,1							
22	AD	12,1							
23	AD	12,1							
24	AD	12,1							
25	AD	12,1							
26	AD	12,1							
27	AD	12,1							
28	AD	12,1							
29	AD	12,1							
30	AD	12,1							
31	AD	12,1							
32	AD	12,1							
33	AD	12,1							
34	AD	12,1							
35	AD	12,1							
36	AD	12,1							
37	AD	12,1							
38	AD	12,1							
39	AD	12,1							
40	AD	12,1							
41	AD	12,1							
42	AD	12,1							
43	AD	12,1							
44	AD	12,1							
45	AD	12,1							
46	AD	12,1							
47	AD	12,1							
48	AD	12,1							
49	AD	12,1							
50	AD	12,1							
51	AD	12,1							
52	AD	12,1							
53	AD	12,1							
54	AD	12,1							
55	AD	12,1							
56	AD	12,1							
57	AD	12,1							
58	AD	12,1							
59	AD	12,1							
60	AD	12,1							
61	AD	12,1							
62	AD	12,1							
63	AD	12,1							
64	AD	12,1							
65	AD	12,1							
66	AD	12,1							
67	AD	12,1							
68	AD	12,1							
69	AD	12,1							
70	AD	12,1							
71	AD	12,1							
72	AD	12,1							
73	AD	12,1							
74	AD	12,1							
75	AD	12,1							
76	AD	12,1							
77	AD	12,1							
78	AD	12,1							
79	AD	12,1							
80	AD	12,1							
81	AD	12,1							
82	AD	12,1							
83	AD	12,1							
84	AD	12,1							
85	AD	12,1							
86	AD	12,1							
87	AD	12,1							
88	AD	12,1							
89	AD	12,1							
90	AD	12,1							
91	AD	12,1							
92	AD	12,1							
93	AD	12,1							
94	AD	12,1							
95	AD	12,1							
96	AD	12,1							
97	AD	12,1							
98	AD	12,1							
99	AD	12,1							
100	AD	12,1							

1	100.1	142.6							
2	100.1								
3	100.1								
4	100.1								
5	100.1								
6	100.1								
7	100.1								
8	100.1								
9	100.1								
10	100.1								
11	100.1								
12	100.1								
13	100.1								
14	100.1								
15	100.1								
16	100.1								
17	100.1								
18	100.1								
19	100.1								
20	100.1								
21	100.1								
22	100.1								
23	100.1								
24	100.1								
25	100.1								
26	100.1								
27	100.1								
28	100.1								
29	100.1								
30	100.1								
31	100.1								
32	100.1								
33	100.1								
34	100.1								
35	100.1								
36	100.1								
37	100.1								
38	100.1								
39	100.1								
40	100.1								
41	100.1								
42	100.1								
43	100.1								
44	100.1								
45	100.1								
46	100.1								
47	100.1								
48	100.1								
49	100.1								
50	100.1								
51	100.1								
52	100.1								
53	100.1								
54	100.1								
55	100.1								
56	100.1								
57	100.1								
58	100.1								
59	100.1								
60	100.1								
61	100.1								
62	100.1								
63	100.1								
64	100.1								
65	100.1								
66	100.1								
67	100.1								
68	100.1								
69	100.1								
70	100.1								
71	100.1								
72	100.1								
73	100.1								
74	100.1								
75	100.1								
76	100.1								
77	100.1								
78	100.1								
79	100.1								
80	100.1								
81	100.1								
82	100.1								
83	100.1								
84	100.1								
85	100.1								
86	100.1								
87	100.1								
88	100.1								
89	100.1								
90	100.1								
91	100.1								
92	100.1								
93	100.1								
94	100.1								
95	100.1								
96	100.1								
97	100.1								
98	100.1								
99	100.1								
100	100.1								

(Handwritten mark)

1000	119,1												
1001	92,1												
1002	92,1	7,1	147,2	133,1	123,1	119,1							
1003	167,2												
1004	1,1	24,1	30,1	17,1	17,1	19,2	4,2	3,1	2,1	167,2	137,1	176,1	174,1
1005	119,1	101,1	47,1	53,1	47,1	38,1	17,1	17,1	11,1	11,1	39,1	76,1	
1006	15,1												
1007	119,2												
1008	115,1	147,1											
1009	92,1	167,2											
1010	1,1	167,2	82,2	75,2									
1011	4,1	3,1	2,3	1,3	144,1	142,2	139,1	128,1	115,2	114,1	113,1	82,1	80,1
1012	75,1	54,1	46,1	40,1	34,2	34,1	30,1	28,2	21,1	17,1	14,1	12,1	11,2
1013	17,1	7,1											
1014	115,1	54,2	30,1	14,1	30,1	12,1	3,1	1,1	119,1				
1015	34,1	147,5	119,1										
1016	115,2												
1017	15,1												
1018	54,1												
1019	16,1	119,4	54,1										
1020	167,2	12,1											
1021	164,1												
1022	119,1												
1023	119,1												
1024	129,1	139,1											
1025	37,1												
1026	115,3	54,1											
1027	92,1												
1028	142,1												
1029	44,1	147,2											
1030	167,3												
1031	36,1	7,1											
1032	12,1												
1033	147,1												
1034	162,1												
1035	127,1												
1036	119,1	54,1											
1037	164,1												
1038	147,1	92,3											
1039	14,1	147,13	129,1	119,1	82,1								
1040	119,1												
1041	36,1												
1042	3,1	1,1	139,2	128,1	112,3	114,1	81,1	75,1	54,2	46,1	38,1	34,1	30,1
1043	28,1	14,2	12,1	7,1									
1044	147,1												
1045	119,1												
1046	16,1												
1047	3,2	81,1	147,8	139,3	120,5	119,4	114,1	75,2	4,2	54,1	38,2	14,4	30,2

UNSIGNED CIST BY PAGE

1002	1602	1202	70	11002	16206	010	7502	3601
101	1601	1201	11001	11001	1101	16201	1001	
102	1602	1202	11002	11002	1102	16202		
103	1603	1203	11003	11003	1103	16203		
104	1604	1204	11004	11004	1104	16204		
105	1605	1205	11005	11005	1105	16205		
106	1606	1206	11006	11006	1106	16206		
107	1607	1207	11007	11007	1107	16207		
108	1608	1208	11008	11008	1108	16208		
109	1609	1209	11009	11009	1109	16209		
110	1610	1210	11010	11010	1110	16210		
111	1611	1211	11011	11011	1111	16211		
112	1612	1212	11012	11012	1112	16212		
113	1613	1213	11013	11013	1113	16213		
114	1614	1214	11014	11014	1114	16214		
115	1615	1215	11015	11015	1115	16215		
116	1616	1216	11016	11016	1116	16216		
117	1617	1217	11017	11017	1117	16217		
118	1618	1218	11018	11018	1118	16218		
119	1619	1219	11019	11019	1119	16219		
120	1620	1220	11020	11020	1120	16220		
121	1621	1221	11021	11021	1121	16221		
122	1622	1222	11022	11022	1122	16222		
123	1623	1223	11023	11023	1123	16223		
124	1624	1224	11024	11024	1124	16224		
125	1625	1225	11025	11025	1125	16225		
126	1626	1226	11026	11026	1126	16226		
127	1627	1227	11027	11027	1127	16227		
128	1628	1228	11028	11028	1128	16228		
129	1629	1229	11029	11029	1129	16229		
130	1630	1230	11030	11030	1130	16230		
131	1631	1231	11031	11031	1131	16231		
132	1632	1232	11032	11032	1132	16232		
133	1633	1233	11033	11033	1133	16233		
134	1634	1234	11034	11034	1134	16234		
135	1635	1235	11035	11035	1135	16235		
136	1636	1236	11036	11036	1136	16236		
137	1637	1237	11037	11037	1137	16237		
138	1638	1238	11038	11038	1138	16238		
139	1639	1239	11039	11039	1139	16239		
140	1640	1240	11040	11040	1140	16240		
141	1641	1241	11041	11041	1141	16241		
142	1642	1242	11042	11042	1142	16242		
143	1643	1243	11043	11043	1143	16243		
144	1644	1244	11044	11044	1144	16244		
145	1645	1245	11045	11045	1145	16245		
146	1646	1246	11046	11046	1146	16246		
147	1647	1247	11047	11047	1147	16247		
148	1648	1248	11048	11048	1148	16248		
149	1649	1249	11049	11049	1149	16249		
150	1650	1250	11050	11050	1150	16250		
151	1651	1251	11051	11051	1151	16251		
152	1652	1252	11052	11052	1152	16252		
153	1653	1253	11053	11053	1153	16253		
154	1654	1254	11054	11054	1154	16254		
155	1655	1255	11055	11055	1155	16255		
156	1656	1256	11056	11056	1156	16256		
157	1657	1257	11057	11057	1157	16257		
158	1658	1258	11058	11058	1158	16258		
159	1659	1259	11059	11059	1159	16259		
160	1660	1260	11060	11060	1160	16260		
161	1661	1261	11061	11061	1161	16261		
162	1662	1262	11062	11062	1162	16262		
163	1663	1263	11063	11063	1163	16263		
164	1664	1264	11064	11064	1164	16264		
165	1665	1265	11065	11065	1165	16265		
166	1666	1266	11066	11066	1166	16266		
167	1667	1267	11067	11067	1167	16267		
168	1668	1268	11068	11068	1168	16268		
169	1669	1269	11069	11069	1169	16269		
170	1670	1270	11070	11070	1170	16270		
171	1671	1271	11071	11071	1171	16271		
172	1672	1272	11072	11072	1172	16272		
173	1673	1273	11073	11073	1173	16273		
174	1674	1274	11074	11074	1174	16274		
175	1675	1275	11075	11075	1175	16275		
176	1676	1276	11076	11076	1176	16276		
177	1677	1277	11077	11077	1177	16277		
178	1678	1278	11078	11078	1178	16278		
179	1679	1279	11079	11079	1179	16279		
180	1680	1280	11080	11080	1180	16280		
181	1681	1281	11081	11081	1181	16281		
182	1682	1282	11082	11082	1182	16282		
183	1683	1283	11083	11083	1183	16283		
184	1684	1284	11084	11084	1184	16284		
185	1685	1285	11085	11085	1185	16285		
186	1686	1286	11086	11086	1186	16286		
187	1687	1287	11087	11087	1187	16287		
188	1688	1288	11088	11088	1188	16288		
189	1689	1289	11089	11089	1189	16289		
190	1690	1290	11090	11090	1190	16290		
191	1691	1291	11091	11091	1191	16291		
192	1692	1292	11092	11092	1192	16292		
193	1693	1293	11093	11093	1193	16293		
194	1694	1294	11094	11094	1194	16294		
195	1695	1295	11095	11095	1195	16295		
196	1696	1296	11096	11096	1196	16296		
197	1697	1297	11097	11097	1197	16297		
198	1698	1298	11098	11098	1198	16298		
199	1699	1299	11099	11099	1199	16299		
200	1700	1300	11100	11100	1200	16300		

APPENDIX 8

ENGLISH LANGUAGE STRUCTURES AND LEXICON

The following list is included as an addition to the structural and lexical list. These structures and lexical items are very basic.
(See Section II for discussion.)

AS 2, Blank

LIST OF LEXICAL AND STRUCTURAL ITEMS FOR ENGLISH LANGUAGE STRUCTURES

Sentences:

- A. Declarative statement
- B. Interrogative question
 - 1. wh- questions
 - 2. tag questions
 - 3. yes/no questions
- C. Imperative command, polite request
- D. Exclamatory exclamation

Sentence Complexity:

- A. Simple one full subject and predicate
- B. Compound two or more independent clauses joined by:
 - 1. punctuation
 - 2. punctuation and conjunctive adverb
 - 3. coordinate conjunction
- C. Complex one or more dependent clauses and an independent clause
- D. Compound-Complex two or more independent clauses and one or more dependent clauses

Verbs:

- A. Concord subject-verb agreement
- B. Transitive takes an object
- C. Intransitive doesn't take an object
- D. Copula to be
- E. Linking connectors
- F. Auxiliaries of tense will, do, did
- G. Auxiliaries of modality should, ought to, must to, have to, have got to, able to, can, may, might, could, would
- H. Tense present, past
- I. Aspect perfect, progressive

Verbal Forms:

- A. Present Participle active voice
- B. Past Participle passive voice

Voice:

- A. Active subject does action
- B. Passive subject does not do action
 - 1. agent expressed
 - 2. agent not expressed

Nouns:

- | | |
|---------------|-----------|
| A. Singular | man, pen |
| B. Plural | men, pens |
| C. Count | chairs |
| D. Mass | flour |
| E. Possessive | soldier's |
| F. Collective | fish |

Adjectives:

- | | |
|--------------------------------|---------------------------|
| A. Predicative | The tank is green |
| B. Attributive | The green tank is moving. |
| C. Degrees of comparison | |
| 1. regular | big, bigger |
| 2. irregular | worse, worst |
| D. Ordinal/Cardinal
Numbers | first, one |

Adverbs:

- | | |
|-------------------|-------------------------|
| A. Time/Frequency | immediately, today, ago |
| B. Place/Position | here, there, everywhere |
| C. Manner | maybe, possibly |
| D. Negative | no, never |
| E. Comparison of | nearest, harder |
| F. Degree | thoroughly, completely |

Articles:

- | | |
|---------------|-----------|
| A. Definite | a, the |
| B. Indefinite | any, some |

Pronouns:

- | | |
|------------------|---------------------|
| A. Personal | you |
| B. Demonstrative | that |
| C. Indefinite | anybody, both, each |
| D. Reflexive | himself, yourself |
| E. Cases of | I, me, my, mine |
| F. Relative | who, whom, whose |
| G. Interrogative | who, which, what |

Conjunctions:

- | | |
|-----------------------|------------------------------|
| A. Coordinating | and, but, or, nor |
| B. Subordinating | because, if, as, that, after |
| C. Correlative | either, or |
| D. Conjunctive adverb | therefore, furthermore |

Prepositions:

A. Simple

- | | |
|----------------------------------|------------|
| 1. place | on, in |
| 2. time | in, at, on |
| 3. direction/motion | to |
| 4. manner/agent/
instrument | by, with |
| 5. measurement/
number amount | of |

B. Compound:

according to, because of, by means

Vocabulary:

words from 1100 through 2400 -
Elementary and Intermediate Phase of General
English materials

Special Expressions/Idioms

"knock it off" "can it, buddy"

Verb Combinations

two word verbs

END

FILMED

2-83

DTIC