

AD-A122 723

AQUATIC AND WILDLIFE RESOURCES OF THE MERAMEC RIVER
BASIN MISSOURI A SELECTED BIBLIOGRAPHY(U) MISSOURI
COOPERATIVE WILDLIFE RESEARCH UNIT COLUMBIA

1/2

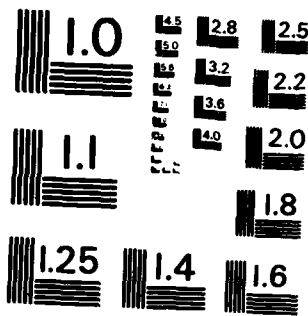
UNCLASSIFIED

D E SIMPSON ET AL. FEB 78

R/O 6/8

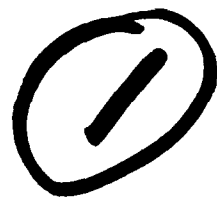
NL

A large grid of 10 columns and 10 rows, completely blacked out.



MICROCOPY RESOLUTION TEST CHART
NATIONAL BUREAU OF STANDARDS - 1963 - A

AD A 122723



Aquatic and Wildlife Resources of the
Meramec River Basin, Missouri

A Selected Bibliography

Prepared by

Donald E. Simpson and Fred B. Samson
Missouri Cooperative Wildlife Research Unit
University of Missouri
Columbia, Missouri 65201

For

U. S. Army Corps of Engineers
St. Louis District
210 North 12th Street
St. Louis, Missouri 63101

February 1978

DTIC
ELECTE
DEC 21 1982

D

DWC FILE COPY

82 12 20 070

DISTRIBUTION STATEMENT A
Approved for public release
Distribution Unlimited

UNCLASSIFIED

SECURITY CLASSIFICATION OF THIS PAGE (When Data Entered)

REPORT DOCUMENTATION PAGE		READ INSTRUCTIONS BEFORE COMPLETING FORM
1. REPORT NUMBER	2. GOVT ACCESSION NO. ADA122720	3. RECIPIENT'S CATALOG NUMBER
4. TITLE (and Subtitle) Aquatic and Wildlife Resources of the Meramec River Basin, Missouri. A Selected Bibliography	5. TYPE OF REPORT & PERIOD COVERED	
	6. PERFORMING ORG. REPORT NUMBER	
7. AUTHOR(s) Donald E. Simpson and Fred B. Samson	8. CONTRACT OR GRANT NUMBER(s)	
9. PERFORMING ORGANIZATION NAME AND ADDRESS Missouri Cooperative Wildlife Research Unit University of Missouri Columbia, MO 65201	10. PROGRAM ELEMENT, PROJECT, TASK AREA & WORK UNIT NUMBERS	
11. CONTROLLING OFFICE NAME AND ADDRESS	12. REPORT DATE Feb 1978	13. NUMBER OF PAGES 96
	15. SECURITY CLASS. (of this report) UNCLASSIFIED	
14. MONITORING AGENCY NAME & ADDRESS (if different from Controlling Office) U.S. Army Engineer Dist., St. Louis 210 Tucker Blvd., North St. Louis, MO 63101	18a. DECLASSIFICATION/DOWNGRADING SCHEDULE	
16. DISTRIBUTION STATEMENT (of this Report) Approved for release; distribution unlimited.		
17. DISTRIBUTION STATEMENT (of the abstract entered in Block 20, if different from Report)		
18. SUPPLEMENTARY NOTES		
19. KEY WORDS (Continue on reverse side if necessary and identify by block number)		
20. ABSTRACT (Continue on reverse side if necessary and identify by block number) This bibliography is the result of a four-month survey of the literature dealing with aquatic and wildlife resources of the Meramec River Basin in east-central Missouri (Figure 1). Published literature and unpublished manuscripts, theses, correspondence, and data which deal specifically with the Basin are listed. Selected references of a more general nature are also included. Sources consulted were the Missouri Department of Conservation, U.S. Fish and Wildlife Service, and University of Missouri, as well as other area		

UNCLASSIFIED

SECURITY CLASSIFICATION OF THIS PAGE(When Data Entered)

universities, conservation organizations, state and federal agencies, and individuals with an interest in the Basin.

UNCLASSIFIED

SECURITY CLASSIFICATION OF THIS PAGE(When Data Entered)

TABLE OF CONTENTS

	<u>Page</u>
Introduction.....	1
 References	
Aquatic.....	6
Molluscs.....	21
Wildlife.....	24
Bats.....	47
General.....	53
Related studies.....	68
 Appendices	
1. Subject index.....	76
2. Contributors.....	85
3. Current research.....	91

Accession For	
NTIS GRA&I	<input checked="" type="checkbox"/>
DTIC TAB	<input type="checkbox"/>
Unannounced	<input type="checkbox"/>
Justification	
By	
Distribution/	
Availability Codes	
Dist	Avail and/or Special
A	



INTRODUCTION

This bibliography is the result of a four-month survey of the literature dealing with aquatic and wildlife resources of the Meramec River Basin in east-central Missouri (Figure 1). Published literature and unpublished manuscripts, theses, correspondence, and data which deal specifically with the Basin are listed. Selected references of a more general nature are also included. Sources consulted were the Missouri Department of Conservation, U.S. Fish and Wildlife Service, and University of Missouri, as well as other area universities, conservation organizations, state and federal agencies, and individuals with an interest in the Basin.

References are listed under six main categories: aquatic, molluscs, wildlife, bats, general, and related studies. "Aquatic" references deal primarily with aquatic organisms and water quality; "Wildlife" includes literature on terrestrial vertebrates. Separate categories for molluscs and bats were created because each includes several references which do not deal directly with the Basin, but which are applicable to endangered species found there. "Related studies" includes literature on reservoir biota cited in Environmental Impact Statements for Meramec Park Lake or Union Lake, references on the impact of impoundments on stream biota, and selected literature on other Missouri streams similar to those found in the Meramec River Basin. "General" includes literature which deals with both aquatic and wildlife resources, as well as references on amphibians and reptiles, cave biology, rare and endangered species lists, and similar subjects which do not fit in any other category.

Citations are listed alphabetically by author within each category and numbered sequentially as follows:

<u>Category</u>	<u>References</u>
Aquatic	1-155
Molluscs	156-190
Wildlife	191-445
Bats	446-502
General	503-672
Related studies	673-752

References located during typing of the bibliography are listed after number 752. In Appendix 1, the references are classified by number into one or more of 94 subject headings which are listed with corresponding code numbers in Table 1. The appropriate subject codes are also listed under each citation. The categories were selected by the authors as a guide on which the reader may

Table 1. Subject headings and code numbers.

01 Algae	48 Health
02 Amphibians	49 History
03 Bats (general)	50 Hydrology
04 Bats-gray	51 Impoundment-effects on stream biota
05 Bats-Indiana	52 Insects
06 Beaver	53 Invertebrates (general)
07 Benthos	54 Miscellaneous
08 Bibliographies	55 Mining
09 Bobcat	56 Mink
10 Caves	57 Molluscs
11 Cave biology	58 Muskrat
12 Coyote	59 Natural areas
13 Crayfish	60 Non-game birds
14 Deer-food habits	61 Non-game mammals
15 Deer-general	62 Opossum
16 Deer-harvest	63 Plankton
17 Deer-habitat and management	64 Planning
18 Deer-population studies	65 Pollution
19 Deer-productivity	66 Quail
20 Deer-reproduction	67 Rabbit
21 Doves	68 Raccoon
22 Environmental impact	69 Rare and endangered species
23 Fish-distribution	70 Recreation
24 Fish-effects of stream alteration and pollution	71 Reptiles
25 Fish-food habits	72 Reservoirs and tailwaters (biota)
26 Fish-general	73 Socio-economic
27 Fish-growth	74 Soils
28 Fish-harvest and catch	75 Species lists
29 Fish-life history	76 Springs
30 Fish-management	77 Squirrel
31 Fish-movement	78 Stream-alteration or improvement
32 Fish-population studies	79 Stream-general
33 Fish-productivity	80 Stream-resources and access
34 Fish-reproduction	81 Turkey-food habits
35 Fish-reservoirs and tailwaters	82 Turkey-general
36 Fishing pressure	83 Turkey-harvest
37 Flood control	84 Turkey-habitat and management
38 Forest resources	85 Turkey-population studies
39 Fox	86 Turkey-productivity
40 Fungi	87 Waterfowl
41 Furbearers (general)	88 Water quality and limnology
42 Furbearer harvest	89 Watershed and land management
43 Game animals (general)	90 Wilderness
44 Game birds (general)	91 Wildlife-food and food production
45 Game harvest	92 Wildlife-general
46 General	93 Wildlife management
47 Habitat evaluation	94 Woodchuck

Figure 1. Map of Meramec River Basin showing location of five proposed flood control impoundments.



build. Because this was a literature survey and not a review, assigned subject codes for most references were based only on the title, abstract, or summary. Appendix 1 is not intended to be a complete subject index. Also, citations for some references which were not consulted directly are not complete; these were extracted from the literature cited sections of other references.

Certain references classified under the subject heading "General" deal with a number of different topics. In particular, the U.S. Army Corps of Engineers Final Environmental Impact Statements for Meramec Park Lake and Union Lake (references 642 and 643) and the "Environmental Inventory of the Meramec River Basin" (Ryckman, Edgerly, Tomlinson, and Associates; reference 620) cover virtually all of the 94 subjects. Another important reference is Volume Two of "An introduction to the biological systems of the St. Louis Area" (reference 588), prepared by the Missouri Botanical Garden, which is a comprehensive bibliography more general in nature than this one.

An additional source of information is "Vegetation of the Meramec Basin (Bibliography)", prepared by Biotic Consultants, Inc., (January 1978), which summarizes literature on vegetation not within the scope of this survey. However, selected references on forest resources are included here, as are those dealing with vegetation-wildlife relationships. Selected references on algae are also listed.

Many of the references are progress or final reports on research conducted by the Missouri Department of Conservation under Federal Aid to Fisheries (Dingell-Johnson projects) and Wildlife (Pittman-Robertson projects). Most of these projects continue for several years, and annual reports are usually prepared. For such studies, the most recent report of an author is cited and followed in parentheses by the year of his first report. Although the project numbers change annually, the study or work-plan numbers, job numbers, and titles generally remain the same. These reports are on file at the Columbia office of the Department of Conservation.

Over 75 individuals were contacted during the survey. Because several of the references are unpublished reports or data on file with these individuals, and because they have knowledge of the resources of the Basin which may not be recorded in the literature, their names and addresses are listed in Appendix 2. Also, many of the individuals or their agencies are currently conducting research which deals in some way with the resources of the Basin. These ongoing projects are listed in Appendix 3.

Reference citations have been recorded on computer cards, which will be used in the future to revise the bibliography.

Please send information on new literature or references not included in the present work to:

Environmental Studies Section
U.S. Army Corps of Engineers
St. Louis District
210 North 12th Street
St. Louis, Missouri 63101

ACKNOWLEDGEMENTS

We are very grateful for the cooperation of each individual listed in Appendix 2. We especially thank the Missouri Department of Conservation for allowing us to survey their files on the Meramec River Basin. Mr. John Brady, U.S. Army Corps of Engineers, St. Louis District, provided initial sources of information and guidance during the survey. Mr. Jim Burroughs, School of Forestry, Fisheries and Wildlife, University of Missouri, prepared the computer program for producing the bibliography. Typing and keypunching were done by Miss Jeanette Humpy and Miss Deretha Darrow.

AQUATIC

1. Anderson, D.J. 1969. Phycological studies of limestone springs. Ph.D. Diss., Washington Univ., St. Louis. 200 pp. (1)
2. Anderson, W.E., Jr. 1969. A study of lead mining waste water pollution problems. M.S. Thesis, Univ. of Mo., Rolla. (55,65)
3. Anonymous. (no date). Fish populations of the lower Meramec River. Mo. Dept. Conserv., Columbia. 3 pp. (mimeo.) (28,32,53,75)
4. Anonymous. 1950. The growth of the smallmouth bass (Micropterus dolomieu Lacepede) in certain Ozark streams of Missouri. Unpubl. rept., Mo. Dept. Conserv., Columbia. 8 pp. (27)
5. Anonymous. 1977. Missouri fishing waters (list by counties of stream and impoundment resources). Mo. Dept. Conserv., Columbia. 4 pp. (mimeo.) (36,80)
6. Axtell, C.B. 1974. Ecological significance of lactate dehydrogenase variants in the Rana pipiens species complex. Ph.D. Diss., Washington Univ., St. Louis. 149 pp. (2)
7. Axtell, C.B. 1976. Comparisons of morphology, lactate dehydrogenase, and distribution of Rana blairi and Rana utricularia in Illinois and Missouri. Trans. III. Acad. Sci. 69(1):37-48. (2)
8. Bauman, A.C. 1945. Report on a fisheries survey of the streams of Missouri with recommendations for their management. Mo. Conserv. Comm., Wildlife Research Program-Final Report-Volume XII. 223 pp. (26,28,75,79)
9. Bechman, H.C., and N.S. Hinchey. 1944. The large springs of Missouri. Mo. Geol. Survey Water Res., Rolla. 144 pp. (76)
10. Bowman, M.L. 1970. Life history of the black redhorse, Moxostoma duquesnei (Le Sueur) in Missouri. Trans. Amer. Fish. Soc. 99(3):546-559. (29)
11. Braasch, M.E., and P.W. Smith. 1965. Relationships of the topminnows Fundulus notatus and Fundulus abriaceus in the Upper Mississippi River Valley. Copeia 1965(1): 46-53. (26)

Aquatic

12. Brezner, J. 1958. Food habits of the northern river carpsucker in Missouri. Prog. Fish-Cult. 20(4): 170-174. (25)
13. Call, R.E. 1887. Memoranda on a collection of fishes from the Ozark region of Missouri. Proc. Davenport Acad. Nat. Sci. 5:73-80. (26,49,75)
14. Chambers, S.R. 1971. Aspects of the life history of the bleeding shiner, Notropis zonatus, in Missouri. M.A. Thesis, Univ. of Mo., Columbia. 82 pp. (29)
15. Chen, H.W. 1970. An investigation of mining effluent and water quality in the new lead belt of southeastern Missouri. M.S. Thesis, Univ. of Mo., Rolla. (55,88)
16. Christenson, L.M., and L.L. Smith. 1965. Characteristics of fish populations in Upper Mississippi River back-water areas. U.S. Fish and Wildlife Service Circular 212:1-53. (32)
17. Clifford, H.F. 1961. Water quality studies of Huzzah Creek. Mo. Dept. Conserv. D-J Proj. F-1-R-10, Work plan 10, Job no. 4. 4 pp. (88)
18. Clifford, H.F. 1962. Some limnological characteristics of six Missouri Ozark streams. Mo. Dept. Conserv. D-J. Proj. F-1-R-11, Work plan 9, Job no. 4; Work plan 10, Job no. 4; Work plan 19, Job no. 1. Prog. rept. 29 pp. (1,7,53,88)
19. Clifford, H.F. 1966. Some limnological characteristics of six Ozark streams. Mo. Dept. Conserv. D-J. Series no. 4. 55 pp. (1,7,53,88)
20. Dieffenbach, W.J. 1968. Water quality survey of the southeast Ozark mining area. Mo. Dept. Conserv. D-J Proj. S-1-R-17, Work plan 20, Job no. 3, Prog. rept. 4 pp. (1967) (55,88)
21. Drouet, F. 1932. A list of algae from Missouri. Bull. Torrey. Bot. Club 59:289-300. (1)
22. Drouet, F. 1933. Algal vegetation of the large Ozark springs. Trans. Amer. Microscop. Soc. 52:83-101. (1,76)

Aquatic

23. Duchrow, R.M. 1976. The effects of a barite tailings pond dam failure upon the water quality of Mill Creek and Big River. Mo. Dept. Conserv. D-J. Proj. F-19-R-2, Study W-3, Job no. 3. Prog. rept. 12 pp. (55,88)
24. Dundee, H.A., and D.S. Dundee. 1965. Observations on the systematics and ecology of Cryptobranchus from the Ozark Plateaus of Missouri and Arkansas. Copeia 1965(3):369-370. (2)
25. Fajen, O.F. 1959. Movement and growth of smallmouth bass in small Ozark streams. M.A. Thesis, Univ. of Mo., Columbia. 95 pp. (27,31)
26. Fajen, O.F. 1961. Influence of stream stability on homing behavior of two smallmouth bass populations. Trans. Amer. Fish. Soc. 91(4):346-349. (24)
27. Fajen, O.F. 1965. The standing crop of fish in two small Ozark streams. Mo. Dept. Conserv. D-J Proj. F-1-R-14, Work plan 10, Job no. 1. Prog. rept. 5 pp. (1958) (33)
28. Fajen, O.F. 1974. The standing crop of fish in Courtois Creek. Mo. Dept. Conserv. D-J Proj. F-1-R-23, Study II, Job no. 1. Prog. rept. 5 pp. (1966) (33)
29. Fajen, O.F. 1975. The effect of a "fish-for-fun" regulation on black bass upon the standing crop of fish in Courtois Creek. Mo. Dept. Conserv. D-J Proj. F-1-R-24, Study S-11, Job no. 1. Final rept. 13 pp. (28,30)
30. Fajen, O.F. 1975. The standing crop of smallmouth bass and associated species in Courtois Creek. pp. 240-249 in H. Clepper, ed. Black Bass Biology and Management. Sport Fishing Institute, Washington, D.C. 534 pp. (33)
31. Fajen, O.F. 1977. An evaluation of the 12-inch minimum length limit on black bass in streams. Mo. Dept. Conserv. D-J Proj. F-1-R-26, Study S-23. Prog. rept. 4 pp. (28,30)
32. Fendlason, R.I. 1977. Letter describing a smallmouth bass tagging study being conducted by the author and his associates in Meramec River and other Ozark streams. Addressed to D.E. Simpson; dated Dec. 14, 1977. 3 pp. (26)

Aquatic

33. Fleener, G.G. 1970. Harvest of fish from Huzzah and Courtois Creek. Mo. Dept. Conserv. D-J Proj. F-1-R-19, Work plan 29, Job no. 3. Prog. rept. 7 pp. (28)
34. Fleener, G.G. 1971. A quantitative creel census of Huzzah and Courtois Creeks. Mo. Dept. Conserv. D-J Proj. F-1-R-20, Work plan 10, Job no. 3. Final rept. 18 pp. (1959) (28)
35. Fleener, G.G. 1974. Harvest of fish from Courtois Creek. Mo. Dept. Conserv. D-J Proj. F-1-R-23, Study S-11, Job no. 3. Final rept. 12 pp. (1971) (28)
36. Fleener, G.G. 1974. Harvest of fish from Huzzah Creek. Mo. Dept. Conserv. D-J Proj. F-1-R-23, Study S-12, Job no. 1. Final rept. 12 pp. (1971) (28)
37. Fleener, G.G. 1975. The harvest of smallmouth bass and associated species in Courtois Creek, 1958-1968. pp. 250-256 in H. Clepper, ed. Black Bass Biology and Management. Sport Fishing Institute, Washington, D.C. 534 pp. (28)
38. Frey, R.P. 1963. Studies on some recent freshwater ostracodes of St. Louis County, Missouri. M.S. Thesis, Washington Univ., St. Louis. 51 pp. (53)
39. Fuchs, E.H. 1972. Ozark mining water quality survey. Mo. Dept. Conserv. D-J Proj. F-1-R-21, Study W-2, Job no. 1. Final rept. 10 pp. (55,88)
40. Funk, J.L. 1954. The estimation of total fishing pressure on Missouri waters. Mo. Dept. Conserv. D-J Proj. F-1-R-3, Work plan 1, Job no. 2. Final rept. pp. unnumbered. (1952) (36)
41. Funk, J.L. 1954. A study of the migration of stream fishes. Mo. Dept. Conserv. D-J Proj. F-1-R-3, Work plan 2, Job no. 2. pp. unnumbered. (1952) (31)
42. Funk, J.L. 1955. A study of the composition and relative abundance of the fish population in selected areas of study streams. Mo. Dept. Conserv. D-J Proj. F-1-R-4, Work plan 2, Job no. 1. Prog. rept. 5 pp. (1953) (32,75)
43. Funk, J.L. 1955. Movement of stream fishes in Missouri. Trans. Amer. Fish. Soc. 85:39-57. (31)

Aquatic

44. Funk, J.L. 1957. Relative efficiency and selectivity of gear used in the study of fish populations in Missouri streams. Mo. Dept. Conserv. D-J Proj. F-1-R-6, Work Plan 2, Job no. 1. Prog. rept. 13 pp. (26,32)
45. Funk, J.L. 1957. Species of fish present in selected areas of four Missouri streams with criteria for the determination of important species. Mo. Dept. Conserv. D-J Proj. F-1-R-6, Work plan 2, Job no. 1. Prog. rept. 11 pp. (32,75)
46. Funk, J.L. 1958. Establishment of criteria, survey, and selection of a stream suitable for experiment studies in warm-water fishery management. Mo. Dept. Conserv. D-J Proj. F-1-R-7, Work plan 7, Job no. 1. Prog. rept. 3 pp.+ (30)
47. Funk, J.L. 1958. Relative efficiency and selectivity of gear used in the study of stream fish populations. Trans. N. Amer. Wildl. Conf. 23:236-248. (26)
48. Funk, J.L. 1959. A state-wide, continuing general creel census. Mo. Dept. Conserv. D-J Proj. F-1-R-8, Work plan 1, Job no. 1. Prog. rept. 7 pp. (1952) (28)
49. Funk, J.L. 1965. Fishery of the lower Meramec Basin. Unpubl. rept., Mo. Dept. Conserv., Columbia. 5 pp. (28,65,80)
50. Funk, J.L. 1968. Missouri's fishing streams. Mo. Dept. Conserv. D-J Series No. 5. 108 pp. (80)
51. Funk, J.L. 1969. Missouri's statewide general creel census. Mo. Dept. Conserv. D-J Series No.6. 275 pp. (28)
52. Funk, J.L., and W.L. Pflieger. 1975. Courtois Creek, a smallmouth bass stream in the Missouri Ozarks. pp. 224-230 in H. Clepper, ed. Black Bass Biology and Management. Sport Fishing Institute, Washington, D.C. 534 pp. (26,79)
53. Funk, J.L. 1975. Evaluation of the smallmouth bass population and fishery in Courtois Creek. pp. 257-269 in H. Clepper, ed. Black bass biology and management. Sport Fishing Institute, Washington, D.C. 534 pp. (28,32)
54. Funk, R.S. 1975. The leopard frogs of Missouri. St. Louis Herp. Soc. Newsletter 2:2-6. (2)

Aquatic

55. Gale, N.L., B.G. Wixson, M.G. Hardie, and J.C. Jennett. 1973. Aquatic organisms and heavy metals in Missouri's new lead belt. *Water Resources Bull.* 9(4):673. (55,65)
56. Gale, N.L., M.G. Hardie, J. Whitfield, and P. Marcellus. 1974. The impact of lead mine and mill effluent on aquatic life. Presented at Environmental Session of the Univ. of Minnesota Mining Symposium, Duluth. (55,65)
57. Gier, L.J., and M. Johnson. 1954. Algae of Missouri. *Trans. Kansas Acad. Sci.* 57:78-80. (1)
58. Gumtow, R.B. 1958. A study of the composition and relative abundance of the fish population in selected areas of study streams. Mo. Dept. Conserv. D-J Proj. F-1-R-7, Work plan 2, Job no. 1. Prog. rept. 17 pp. (1956) (32,75)
59. Handler, A.R. 1969. Some effects of lead-zinc mining waste water on a stream environment. M.S. Thesis, Univ. of Mo., Rolla. (55)
60. Hanson, W.D. 1977. A statewide survey of fishing pressure. Mo. Dept. Conserv. D-J Proj. F-1-R-26, Study I-22, Job no. 1. Prog. rept. 6 pp. (36)
61. Hobbs, H.H., Jr. 1952. A new albinistic crayfish of the genus Cambarus from southern Missouri with a key to the albinistic species of the genus (Decapoda, Astacidae). *Amer. Midl. Natur.* 48:689-693. (13)
62. Hobbs, H.H., Jr., and M.S. Bedinger. 1964. A new troglobitic crayfish of the genus Cambarus (Decapoda, Astacidae) from Arkansas with a note on the range of Cambarus cryptodytes Hobbs. *Proc. Biol. Soc. Washington* 77:9-15. (11,13)
63. Hoey, J. 1972. Fisheries management recommendations for the Woodson K. Woods Memorial Wildlife Area. Mo. Dept. Conserv., Jefferson City. Memo. 8 pp. (30,32,75)
64. Holland, H.T. 1964. Ecology of the bowfin (Amia calva Linnaeus) in southeastern Missouri. M.A. Thesis, Univ. of Mo., Columbia. 89 pp. (26)

Aquatic

65. Holsinger, J.R. 1972. The freshwater amphipod crustaceans (Gammaridae) of North America. U.S. Environmental Protection Agency, Biota of Freshwater Ecosystems, Identification Manual No. 5. 89 pp. (53)
66. Hubbs, C.L., and G.A. Moore. 1940. The subspecies of *Notropis zonatus*, a cyprinid fish of the Ozark Upland. *Copeia* 1940(2):91-99. (26)
67. Hubricht, L. 1943. Studies on the Nearctic Amphipoda, III. Notes on the freshwater amphipods of the eastern United States with descriptions of ten new species. *Amer. Midl. Natur.* 29:683-712. (53)
68. Hubricht, L., and J.G. Mackin. 1940. Descriptions of nine new species of freshwater amphipod crustaceans with notes on new localities for other species. *Amer. Midl. Natur.* 23:187-218. (53)
69. Jordan, D.S., and S.E. Meek. 1885. List of fishes collected in Iowa and Missouri in August, 1884, with descriptions of three new species. *Proc. U.S. Natl. Mus.*, 8:1-17. (26,49,75)
70. Kehr, W.Q., and W.S. Johnson. 1943. A study of the pollution of the Meramec River. Missouri State Board of Health, Division of Public Health Engineering and Industrial Hygiene. 42 pp. (48,65,88)
71. Korschgen, L.J., and D.L. Moyle. 1955. Food habits of the bullfrog in central Missouri farm ponds. *Amer. Midl. Natur.* 54(2):332-341. (2)
72. Korschgen, L.J., and T.S. Baskett. 1963. Foods of impoundment- and stream-dwelling bullfrogs in Missouri. *Herpetologica* 19(2):89-99. (2)
73. Kramer, R.L. 1976. Effects of a century old Missouri lead mining operation upon the water quality, sediments, and biota of Flat River Creek. M.S. Thesis, Univ. of Mo., Rolla. 137 pp. (1,24,53,55,65,88)
74. Kuester, D.R. 1963. Inspection of benthos in vicinity of Valley Park, Missouri. Mo. Dept. Conserv., Columbia. Memo. 3 pp. (7,65,88)

Aquatic

75. Kuester, D.R. 1964. The benthos of streams in the Meramec River Basin as related to water quality. pp. 24-48 in Water quality of Big, Bourbeuse, and Meramec river basins. Mo. Water Pollution Board, Jefferson City. (7)
76. Leake, D.V., and H.H. Leake. 1962. Algae of Ozarkian springs and spring streams: winter aspect near head of Crane Creek, Stone County, Missouri. Proc. Okla. Acad. Sci. 42:39-46. (1)
77. Linton, J.R. 1959. A study of a stream population of green sunfish. M.S. Thesis, Univ. of Mo., Columbia. 67 pp. (32)
78. Lowry, E.M. 1953. The growth of the smallmouth bass (Micropterus dolomieu Lacepede) in certain Ozark streams of Missouri. Ph.D. Diss., Univ. of Mo., Columbia. 316 pp. (27)
79. McCaskill, M.L., J.T. Thomerson, and P.A. Mills. 1972. Food of the northern studdfish, Fundulus catenatus, in the Missouri Ozarks. Trans. Amer. Fish. Soc. 101(2):375-377. (25)
80. Meek, S.E. 1891. Report of explorations made in Missouri and Arkansas during 1889, with an account of the fishes observed in each of the river basins examined. Bull. U.S. Bur. Fish., 9(1889):113-141. (26,49,75)
81. Mills, P.A. 1975. A pre-impoundment ichthyological survey of Big River, east-central Missouri, prior to the completion of the Meramec Basin Project. M.S. Thesis, Northeast Louisiana Univ., Monroe. 101 pp. (22,32,75)
82. Mills, P.A., Jr., C.H. Hocutt, and J.R. Stauffer, Jr. 1977. The pre-impoundment fish fauna of Big River (Meramec drainage, Missouri). Unpubl. manuscript, Museum of Natural History, Univ. of Kansas, Lawrence. 19 pp. (22,32,75)
83. Missouri Department of Conservation. 1933 et seq. Files by county on water quality problems and investigations. Columbia. (88)

Aquatic

84. Missouri Department of Conservation. 1975. Meramec Basin Project effects on streams. Unpubl. rept., Jefferson City. 2 pp. (mimeo.) (22,88)
85. Missouri Department of Natural Resources. (no date). Records of analyses of compliance monitoring of wastewater discharges in the Meramec River Basin. Unpubl. data, Div. Environ. Qual., Jefferson City. (65,88)
86. Missouri Department of Natural Resources. 1975. Records of macroinvertebrate sampling of Meramec River, Big River, Flat River Creek, Cedar Creek, and Terre Bleu Creek. Unpubl. data, Div. of Environ. Qual., Jefferson City. (53)
87. Missouri Department of Natural Resources. 1976. Water quality management basin plan for Upper-Mississippi-Meramec River Basin. Div. of Environ. Qual., Water Qual. Program. 305 pp. (64,65,88)
88. Missouri State Health Board. 1943. Meramec River pollution study. Div. of Publ. Health Engin., Jefferson City. 42 pp. (48,65)
89. Missouri Water Pollution Board. 1964. Water quality of Big, Bourbeuse, and Meramec river basins. Jefferson City. 65 pp, 4 appendices. (1,7,13,24, 26,50,53,55,57,65,88)
90. Moyle, D.L. 1952. Life history of the bullfrog in central Missouri farm ponds. M.A. Thesis, Univ. of Mo., Columbia. 89 pp. (2)
91. Nagel, W.O. 1942. A report on fisheries conditions in the Meramec watershed. Unpubl. rept., Mo. Dept. Conserv., Jefferson City. (26,28)
92. Netsch, N.F. 1964. Food and feeding habits of the longnose gar in central Missouri. Proc. S.E. Assoc. Game Fish Comm. 18:506-511. (25)
93. Netsch, N.F., and A.J. Witt, Jr. 1962. Contributions to the life history of the longnose gar, (Lepisosteus osseus) in Missouri. Trans. Amer. Fish. Soc. 91(3): 251-262. (29)

Aquatic

94. Nichols, H.M. 1953. The age and growth of the large-mouth bass Micropterus salmoides (Lacepede) in Missouri. M.A. Thesis, Univ. of Mo., Columbia. 51 pp. (27)
95. Nickerson, M.A., and C.E. Mays. 1973. A study of the Ozark hellbender Cryptobranchus alleganiensis Bishopi. Ecology 54(5):1164-1165. (2)
96. Nickerson, M.A., and C.E. Mays. 1973. The hellbenders: North American giant salamanders. Milwaukee Publ. Mus. Publ. in Biol. and Geol., No. 1. 106 pp. (2)
97. Novinger, G.D. 1977. An assessment of Missouri's pond program. Mo. Dept. Conserv. D-J Proj. F-1-R-25, Study I-19, Job no. 1. Final rept. 58 pp. (1976) (28,30,36)
98. Ochs, K.F. 1970. Energy relations and exploitation of small pond ecosystems by toads, as a function of maturity. Ph.D. Diss., Washington Univ., St. Louis. 152 pp. (2)
99. Peglar, W.F. 1975. Analysis of water from springs located at Tyson Research Center. Tyson Research Center, Washington Univ., St. Louis. 2 pp. (mimeo.) (76,88)
100. Perry, K. 1971. A study of the fish population of the Lower Meramec River. Unpubl. rept., Mo. Dept. Conserv., Jefferson City. 14 pp. (32,75)
101. Perry, K. 1973 et seq. Unpublished data on fish populations in the Meramec River. Mo. Dept. Conserv., Jefferson City. (32)
102. Pflieger, W.L. 1962. Inventory of fish populations in Big River. Mo. Dept. Conserv., Columbia. 2 pp. (mimeo.) (32,75)
103. Pflieger, W.L. 1963. Fish species in Meramec River above and below Valley Park. Mo. Dept. Conserv., Columbia. Memo. 2 pp. (32,75)
104. Pflieger, W.L. 1964. The fish population of Meramec River. Mo. Dept. Conserv. D-J Proj. F-1-R-13, Work plan 8, Job no. 3. 26 pp.+ (32,75)

Aquatic

105. Pflieger, W.L. 1966. Reproduction of the smallmouth bass (Micropterus dolomieu) in a small Ozark stream. Amer. Midl. Natur. 76(2):410-418. (34)
106. Pflieger, W.L. 1966. Young of the orange-throat darter (Etheostoma spectabile) in nests of the smallmouth bass (Micropterus dolomieu). Copeia 1966(1):139-140. (26,34)
107. Pflieger, W.L. 1968. A checklist of the fishes of Missouri, with keys for identification. Mo. Dept. Conserv. D-J Series No. 3. 64 pp. (26)
108. Pflieger, W.L. 1968. The distribution of Missouri fishes. Mo. Dept. Conserv. D-J Proj. F-1-R-17, Work plan 2, Job no. 5. Prog. rept. 6 pp.+ (1959) (23)
109. Pflieger, W.L. 1971. A distributional study of Missouri fishes. Mus. Nat. Hist., Univ. Kansas Publ. 20(3):225-570. (23,26)
110. Pflieger, W.L. 1974. Fauna of Missouri springs. pp.33-42 in Vineyard, J.D., and G.L. Feder. Springs of Missouri. Mo. Geol. Surv. and Water Res., Rolla. 266 pp. (2,13,26,52,53,75)
111. Pflieger, W.L. 1975. Reproduction and survival of smallmouth bass in Courtois Creek. pp. 231-239 in H. Clepper, ed. Black Bass Biology and Management. Sport Fishing Institute, Washington, D.C. 534 pp. (34)
112. Pflieger, W.L. 1975. The fishes of Missouri. Mo. Dept. Conserv., Jefferson City. 343 pp. (23,26,29)
113. Pflieger, W.L. 1975. Spawning and survival of smallmouth bass and associated species in Courtois Creek. Mo. Dept. Conserv. D-J Proj. F-1-R-24, Study S-11, Job no. 2. Final rept. 8 pp. (1958) (34)
114. Pflieger, W.L., O. Fajen, and E.F. Robinson-Wilson. 1977. The stream resources of Missouri. Mo. Dept. Conserv. D-J Proj. F-1-R-26, Study S-20. Prog. rept. 5 pp. (1976) (80)

Aquatic

115. Purkett, C.A., Jr. 1955. A study of the growth rates of the important stream fishes of the Meramec River watershed. Mo. Dept. Conserv. D-J Proj. F-1-R-4, Work plan 2, Job no. 4. Final rept. 23 pp. (1954) (27)
116. Purkett, C.A., Jr. 1958. Growth rates of Missouri stream fishes. Mo. Dept. Conserv. Aquatic Series No. 1. 46 pp. (27)
117. Redmon, W.L. 1969. Statewide stream pollution survey. Mo. Dept. Conserv. D-J Proj. F-1-R-18, Work plan 20, Job no. 5. Prog. rept. 4 pp.+ (1968) (65)
118. Robinson-Wilson, E.F. 1977. Missouri fish kill investigations, 1976. Mo. Dept. Conserv. D-J Proj. F-19-R-2, Study W-3, Job no. 2. Prog. rept. 5 pp.+ (24,65)
119. Robinson-Wilson, E.F. 1977. Water quality of the southeast Ozark mining area. Mo. Dept. Conserv. D-J Proj. F-19-R-3, Study W-2, Job no. 1. Prog. rept. 2 pp. (55,88)
120. Robinson-Wilson, E.F. 1977. Missouri stream pollution survey. Mo. Dept. Conserv. D-J Proj. F-19-R-3, Study W-3, Job no. 1. Prog. rept. 2 pp. (65)
121. Robinson-Wilson, E.F. 1977. Missouri stream pollution survey. Mo. Dept. Conserv. D-J Proj. S-1-R-23, Study W-3, Job no. 1. Prog. rept. 10 pp.+ (65)
122. Robinson, P.W. 1958. The abundance, distribution, and ecology of forage fishes in streams. Mo. Dept. Conserv. D-J Proj. F-1-R-7, Work plan 2, Job no. 3. Prog. rept. 13 pp. (1953) (23,26,32,75)
123. Rodgers, E.B. 1975. The interactions of benthic dipterans as they affect the relationships between biomass and population density. Ph.D. Diss., Washington Univ., St. Louis. 182 pp. (7)
124. Ryck, F.M., Jr. 1973. The mayfly and stonefly fauna of Missouri Ozark streams. Trans. Mo. Acad. Sci. 7-8:3-21. (7,65,75)

Aquatic

125. Ryck, F.M., Jr. 1974. Missouri stream pollution survey. Mo. Dept. Conserv. Aquatic Series No. 8. 38 pp. (65,88)
126. Ryck, F.M., Jr. 1974. Water quality survey of the southeast Ozark mining area. Mo. Dept. Conserv. Aquatic Series No. 10. 28 pp. (1,7,53,55,65,88)
127. Ryck, F.M., Jr. 1975. Missouri stream pollution survey. Mo. Dept. Conserv. D-J Proj. F-19-R, Study W-3, Job no. 1. Prog. rept. 1 p. (1973) (65)
128. Ryck, F.M., Jr. 1976. Missouri fish kill investigations, 1974. Mo. Dept. Conserv. D-J Proj. F-19-R-2, Study W-3, Job no. 2. Prog. rept. 9 pp.+ (1973) (24,65)
129. Ryck, F.M., Jr. 1977. Water quality of the southeast Ozark mining area. Mo. Dept. Conserv. D-J Proj. F-19-R-2, Study W-2, Job no. 1. Prog. rept. 12 pp. (1974) (55,88)
130. Ryck, F.M., Jr., and F.H. Fuchs. 1973. The relationship between diversity index values and the number of mayfly and stonefly taxa in Ozark streams. Paper presented at 21st Annual Meeting of Midwest Benthological Soc., East Lansing, Michigan. (7)
131. Schroeder, E.E. 1966. Age determination and population structure in Missouri bullfrogs. Ph.D. Diss., Univ. of Mo., Columbia. 94 pp. (2)
132. Schroeder, E.E. 1975. The reproductive cycle of the male bullfrog, Rana catesbeiana, in Missouri. Trans. Kansas Acad. Sci. 77(1):31-35. (2)
133. Schroeder, E.E., and T.S. Baskett. 1968. Age estimation, growth rates and population structure in Missouri bullfrogs. Copeia 1968:583-592. (2)
134. Seale, D. 1973. Impact of amphibian larval populations on an aquatic community. Ph.D. Diss., Washington Univ., St. Louis. 167 pp. (2)
135. Seale, D.B., E. Rodgers, and M.E. Boraas. 1975. Effects of suspension-feeding frog larvae on limnological variables and community structure. Verh. Internat. Verein. Limnol. 19:3179-3184. (2,88)

Aquatic

136. Smith, P.W., A.E. Lopinot, and W.L. Pflieger. 1971. A distributional atlas of Upper Mississippi River fishes. Ill. Nat. Hist. Surv. Biol. Notes No. 73, Urbana. (23)
137. Steele, M.I. 1920. Crayfish of Missouri. Pub. Univ. Cincinnati, Series 2, Vol. 2, Bull. 10:3-55. (13)
138. Thomerson, J.E. 1974. An inventory of the fish fauna of the St. Louis standard metropolitan statistical area. Appendix A in An introduction to the biological systems of the St. Louis area, Vol. 1. Mo. Bot. Gard. (26,75)
139. Trautman, M.B., and R.G. Martin. 1951. Moxostoma aurealum pisolabrum, a new subspecies of sucker from the Ozarkian streams of the Mississippi River system. Mus. Zool., Univ. Michigan, Occ. Pap. 534:1-10. (26)
140. Turner, S.E. 1973. Brown trout stocking (Meramec River). Mo. Dept. Conserv., Columbia. Memo. 1 p. (30)
141. Turner, S.E. 1977. Brown trout stocking (Meramec River and others). Mo. Dept. Conserv., Columbia. Memo. 1 p. (30)
142. U.S. Department of Interior. 1970. Stream pollution in the new lead belt of southeast Missouri. Office of Water Resources Research, Water Resources Research Center. (55,65)
143. U.S. Public Health Service. 1960 et seq. Reports of pollution-caused fish kills. Div. of Water Supply and Poll. Control; Basic Data Branch. (24,65)
144. Vance, J.M. 1977. The case of the perturbed poodles. Mo. Conservationist 38(8):16-19. (65,88)
145. Vineyard, J.D. 1974. Spring resources of the Meramec River Basin, Missouri (abstract). p. 39 in Meramec Valley Symposium. Mo. Speleology 14(1): 39 pp. (76)
146. Vineyard, J.D., and G.L. Feder. 1974. Springs of Missouri. Mo. Geol. Surv. and Water Res., Rolla. 266 pp. (76)

Aquatic

147. Whitfield, J., P. Marcellus, and N.L. Gale. 1974. The effects of mining and milling operations on aquatic life in Missouri's new lead belt. Presented at Mo. Acad. Sci. Ann. Mtg., Maryville. (Abstract published in proceedings.) (55,65)
148. Whitley, J.R. 1969. Pollution investigations. Mo. Dept. Conserv. D-J Proj. F-1-R-18, Work plan 19, Job no. 1. Prog. rept. 10 pp. (1966) (65)
149. Williams, A.B. 1954. Speciation and distribution of the crayfishes of the Ozark Plateaus, and Ouachita Provinces. Univ. Kans. Sci. Bull. 36(12):803-918. (13)
150. Willis, Y.L. 1954. Breeding, transformation, and determination of age of the bullfrog (Rana catesbeiana Shaw) in Missouri. M.A. Thesis, Univ. of Mo., Columbia. 63 pp. (2)
151. Willis, Y.L., D.L. Moyle, and T.S. Baskett. 1956. Emergence, breeding, hibernation, movements, and transformation of the bullfrog, Rana catesbeiana, in Missouri. Copeia 1956(1):30-41. (2)
152. Wixson, B.G., and A.R. Handler. 1969. Some effects of lead-zinc mining wastewaters on bluegill sunfish (Lepomis macrochirus). Presented at Mo. Acad. Sci. Ann. Mtg., Columbia. (Abstract published in proceedings.) (24,55,65)
153. Wixson, B.G., and N.L. Gale. 1975. Some limnological effects and associated heavy metals from mineral production in southeast Missouri, U.S.A. Proc. Internat. Symp. Interaction between Water and Living Matter, Odessa, U.S.S.R. (55,88)
154. Zurheide-Hermann, Inc. 1972. St. Louis County water pollution control study, Phase I: Areas tributary to the Meramec River. Prepared for the East-West Gateway Coordinating Council. (65,88)
155. (omitted)

MOLLUSCS

156. Baker, F.C. 1928. The fresh-water Mollusca of Wisconsin. Part II: Pelecypoda. Univ. of Wisconsin Bull. No. 70. 495 pp. (57)
157. Bates, J.M. 1962. The impact of impoundment on the mussel fauna of Kentucky Reservoir, Tennessee River, Amer. Midl. Natur. 68(1):232-236. (51,57,72)
158. Branson, B.A. 1967. A partial biological survey of the Spring River drainage in Kansas, Oklahoma, and Missouri. Part I. Collecting sites, basic limnological data, and mollusks. Trans. Kansas Acad. Sci. 69(3-4):250-301. (57)
159. Buchanan, A. 1977. Status of knowledge report: naiades of the Meramec River Basin. Part I: Text. Prepared for U.S. Army Corps of Engineers, St. Louis District. 48 pp. (57)
160. Buchanan, A. 1977. Status of knowledge report: naiades of the Meramec River Basin. Part II: Species distribution maps. Prepared for U.S. Army Corps of Engineers, St. Louis District. 51 pp. (57)
161. Burch, J.B. 1973. Freshwater Unionacean clams (Mollusca: Pelecypoda) of North America. U.S. EPA Identification Manual No. 11. 176 pp. (57)
162. Clarke, A.H., Jr., and C.O. Berg. 1959. The freshwater mussels of central New York with an illustrated key to the species of north-eastern North America. Cornell Univ. Agric. Exp. Sta. Memoir No. 367. 79 pp. (57)
163. Danglade, E. 1914. The mussel resources of the Illinois River. U.S. Bureau of Fisheries. Appendix 6 to the report of the U.S. Commission for Fisheries for 1913. 48 pp. (57)
164. Funk, J.L. 1968. Clammers, clams, and clamming. Mo. Conservationist 29(1):1-3. (57)
165. Goodrich, C., and H. van der Schalie. 1944. A revision of the Mollusca of Indiana. Amer. Midl. Natur. 32(2): 257-326. (57)
166. Grier, N.M. 1915. List of the naiades of the Meramec River, Missouri. Amer. Midl. Natur. 4(12):517-518. (57)
167. Heard, W.H., and R.H. Guckert. 1970. A re-evaluation of the recent Unionacea (Pelecypoda) of North America. Malacologia 10(2):333-355. (57)

Molluscs

168. Hubricht, L. 1938. Molluscs of the Missouri Botanical Garden Arboretum. *Mo. Bot. Gard. Bull.* 26(2):56-58. (57)
169. Hubricht, L. 1940. The Ozark Amnicolas. *Nautilus* 53: 118-123. (57)
170. Hubricht, L. 1941. The cave Mollusca of the Ozark region. *Nautilus* 54:111-113. (11,57)
171. Isom, G.B. 1969. The mussel resources of the Tennessee River. *Malacologia* 7(2-3):397-425. (57)
172. Jorgensen, S.E., and F.W. Sharp, eds. 1971. Proceedings of a symposium on rare and endangered molluscs (naiades) of the U.S. U.S. Dept. of Interior, Fish and Wildlife Service, Region 3. (57,69)
173. Lefevre, C., and W.C. Curtis. 1910. Studies on the reproduction and artificial propagation of fresh-water mussels. *Bull. Bur. Fisheries* 30:105-201. (57)
174. Murray, H.D., and A.B. Leonard. 1962. Handbook of Unionid mussels in Kansas. *Univ. of Kans., Mus. Nat. Hist. Misc. Publ. No. 28.* 184 pp. (57)
175. Neal, J.K., and W.R. Allen. 1964. The mussel fauna of the upper Cumberland Basin before its impoundment. *Malacologia* 1(3):427-459. (51,57)
176. Oesch, R. 1974. The freshwater mussel fauna of the St. Louis metropolitan area: an overview. Appendix B in *An Introduction to the Biological Systems of the St. Louis Area, Vol. 1.* *Mo. Bot. Gard.* (57)
177. Oesch, R. 1974. Meramec River--mussel headquarters for Missouri. pp. 17-26 in *Meramec Valley Symposium.* *Mo. Speleology* 14(1). 39 pp. (57)
178. Ortmann, A.E. 1919. A monograph of the naiades of Pennsylvania, Part III: systematic account of the genera and species. *Memoirs of the Carnegie Museum* 8(1919-1921):1-384. (57)
179. Parmalee, P.W. 1967. The fresh-water mussels of Illinois. *Illinois State Mus., Pop. Sci. Series* 8:108 pp. (57)
180. Scruggs, G.D., Jr. 1960. Status of fresh-water mussel stocks in the Tennessee River. *U.S. Fish and Wildlife Serv. Sci. Rept., Fisheries* 370:1-41. (57)

Molluscs

181. Stansbery, D.H. 1964. The mussel (muscle) shoals of the Tennessee River revisited. Amer. Malacol. Union. Ann. Rept. (1964), pp. 25-28. (57)
182. Stansbery, D.H. 1966. Utilization of naiades by prehistoric man in the Ohio Valley. Ann. Reports Amer. Malacol. Union. pp. 41-43. (57)
183. Stansbery, D.H. 1970. Eastern freshwater mollusks (1) the Mississippi and St. Lawrence river systems. Malacologia 10(1):9-22. (57)
184. Stansbery, D.H. 1973. Unionid mollusks collected from the Osage River system above Warsaw, Missouri, in August, 1973. Unpubl. rept. (57)
185. Starrett, W.C. 1971. A survey of the mussels (Unionidae) of the Illinois River: a polluted stream. Ill. Nat. Hist. Surv. Bull. 30(5):403. (57)
186. Stein, C.B. 1971. Naiad life cycles: their significance in the conservation of the fauna. Proc. Symp. Rare and Endangered Mollusks (naiades) of the United States. U.S. Dept. Interior. pp. 19-25. (57)
187. Utterback, W.I. Mussel resources in Missouri. Economic circular No. 10. pp. 1-6. (57)
188. Utterback, W.I. 1915. The naiades of Missouri. Amer. Midl. Natur. 4(3):41-53. (57)
189. Utterback, W.I. 1917. Naiad geography of Missouri. Amer. Midl. Natur. 5(1):26-30. (57)
190. van der Schalie, H. 1950. The mussels of the Mississippi River. Amer. Midl. Natur. 44(2):448-466. (57)

WILDLIFE

191. Anderson, R.A., and P.E. Bauer. 1968. A guide to finding birds in the St. Louis area. Webster Groves Nature Study Society, St. Louis. 44 pp. (60)
192. Anonymous. 1975. A bibliography pertaining to white-tailed deer in Missouri. Mo. Dept. Conserv., Columbia. 6 pp. (mimeo.) (8,15)
193. Anonymous. 1976. Birds of the Tyson Research Center. Washington Univ., St. Louis. (mimeo.) (60,75)
194. Anonymous. 1976. Species list of mammals found at Tyson Research Center. Washington Univ., St. Louis. (mimeo.) (43,75)
195. Armbruster, M.J. 1973. Evaluation of the mourning dove call count as a reliable index to population levels in the field. M.S. Thesis, Univ. of Mo., Columbia. 102 pp. (21)
196. Atwood, E., and J.A. Steyermark. 1937. The white-tailed deer in Missouri. (Preliminary report). Clark National Forest. 34 pp. (mimeo.) (15)
197. Babcock, K.M. 1976. Analysis of Missouri duck harvest data. Mo. Dept. Conserv. P-R Proj. W-13-R-30, Study 16, Job no. 1. Final rept. 28 pp. (1972) (45,87)
198. Baker, M.F. 1948. The 1948 wild gobbler roadside count. Mo. Dept. Conserv. P-R Proj. 13-R-2. Work plan 3, Job no. 2. Prog. rept. 5 pp. (1947) (85)
199. Baker, M.F. 1949. The 1949 roadside dove count. Mo. Dept. Conserv. P-R Proj. 13-R-4, Work plan 7, Job no. 1. Prog. rept. 4 pp. (1947) (21)
200. Baskett, T.S., R.L. Dunkeson, and S.C. Martin. 1957. Responses of forage to timber stand improvement in the Missouri Ozarks. J. Wildl. Manage. 21(2):121-126. (15,38,93)
201. Batha, Carl A. 1972. Movements and social behavior of the eastern wild turkey. M.A. Thesis, Univ. of Mo., Columbia. 74 pp. (82)
202. Bennitt, R. 1933. Checklist of the birds of Missouri. Univ. of Mo. Studies, Columbia 7(3):1-81. (44,60,75)

Wildlife

203. Bennitt, R., and W.O. Nagel. 1937. A survey of the resident game and furbearers of Missouri. Univ. of Mo. Studies, Columbia 12(2):1-215. (41,43)
204. Bischof, T. 1975. Impact of the Meramec Park Lake on white-tailed deer, wild turkey, and Myotis sodalis. Unpubl. rept., St. Louis Univ. (Prepared for Dr. David Bedan). (5,15,22,82)
205. Bjugstad, A.H., D.A. Murphy, and H.W. Crawford. 1968. Low returns from Ozarks woods grazing. U.S.F.S., N. Cent. For. Exper. Sta., Res. Note N.C. 60. (14,91)
206. Blakey, H.L. 1937. The wild turkey on the Missouri Ozark range. U.S.D.A. Bur. Biol. Survey, Wildl. Res. and Manage. Leaflet B5-77. 32 pp. (82)
207. Brakhage, G.D. 1965. Management of mast crops for wood ducks. pp. 75-80 in Wood Duck Management and Research. Wildl. Mgmt. Inst., Washington, D.C. (87,91)
208. Brohn, A. 1950. An analysis of data obtained at deer weighing and checking stations. Mo. Dept. Conserv. P-R Proj. 13-R-4, Work plan 1, Job no. 3. Prog. rept. 13 pp. (16,18)
209. Brohn, A. 1951. A study of deer browse utilization and availability in the Missouri Ozarks. Mo. Dept. Conserv. P-R Proj. 13-R-5, Work plan 1, Job no. 1. Prog. rept. 37 pp. (1949) (14,19,20,91)
210. Brohn, A. 1952. An analysis of the age composition, weights, and antler size of the 1951 deer kill. Mo. Dept. Conserv. P-R Proj. 13-R-6, Work plan 1, Job no. 2. Prog. rept. 22 pp.+ (1951) (16)
211. Brohn, A., and D. Robb. 1955. Age composition, weights, and physical characteristics of Missouri's deer. Mo. Conserv. Comm., P-R Series 13. 28 pp. (18,19)
212. Brown, L.N. 1963. Ecology and reproduction of Peromyscus boylii, P. leucopus, and P. maniculatus in the Ozark mountains. Ph.D. Diss., Univ. of Mo., Columbia. 173 pp. (61)
213. Brown, L.N. 1964. Reproduction of the brush mouse and white-footed mouse in the central United States. Amer. Midl. Natur. 72(1):226-240. (61)

Wildlife

214. Brown, M.J. 1931. Comparative studies of the animal communities of the oak-hickory forests in Missouri and Oklahoma. Univ. of Oklahoma Survey III, No. 2:231-261. (92)
215. Burns, P.Y., D.M. Christisen, and J.M. Nichols. 1954. Acorn production in the Missouri Ozarks. Ag. Exp. Sta. Bull. 611. 8 pp. (91)
216. Chambers, G.D. 1971. A study of current ring-neck pheasant distribution. Mo. Dept. Conserv. P-R Proj. 13-R-24, Work plan 11, Job no. 3. Prog. rept. 43 pp. (1964) (44)
217. Chambers, G.D. 1977. Ring-necked pheasant populations in north Missouri. Mo. Dept. Conserv. P-R Proj. W-13-R-30, Study XXIX, Job nos. 1 and 2. Prog. rept. 60 pp. (1972) (44)
218. Christisen, D.M. 1951. Yields of acorns from a post oak, Quercus stellata, August, 1949, Indian Trail Refuge, Dent County, Missouri. J. Wildl. Manage. 15(3):332-333. (14,91)
219. Christisen, D.M. 1955. Yield of seed by oaks in the Missouri Ozarks. J. Forest. 53(6):439-441. (91)
220. Christisen, D.M. 1957. An investigation of age and sex ratios of squirrels taken in 1956 by hunters and a postal survey of some sociological aspects of hunting by cooperators in 1954. Mo. Dept. Conserv. P-R Proj. 13-R-11, Work plan 4, Job no. 1. Prog. rept. 10 pp. (45,73,77)
221. Christisen, D.M. 1961. An investigation of age and sex ratios of squirrels taken in 1960 by hunters. Mo. Dept. Conserv. P-R Proj. 13-R-15, Work plan 9, Job no. 1. Prog. rept. 20 pp. (1948) (45,77)
222. Christisen, D.M. 1964. Squirrel management. Mo. Dept. Conserv., Columbia. 7 pp. (77,93)
223. Christisen, D.M. 1969. Nut tree plantings for wildlife. In Handbook of North American Nut Trees. Nut Growers Assoc., Knoxville, Tenn. (91)
224. Christisen, D.M. 1969. Study and evaluation of mast and mast-producing plants for wildlife in Missouri. Mo. Dept. Conserv. P-R Proj. 13-R-24, Work plan 9, Job no. 2. Prog. rept. 10 pp. (1948) (91)

Wildlife

225. Christisen, D.M. 1970. An analysis of biological data from squirrels taken by hunters in 1969 and evaluation of harvest and special management practices. Mo. Dept. Conserv. P-R Proj. 13-R-24, Work plan 9, Job no. 1, Prog. rept. 24 pp. (1962) (45,77,93)
226. Christisen, D.M. 1975. Annual mast crop survey. Mo. Dept. Conserv. P-R Proj. W-13-R-30, Study XXIII, Job no. 1. Prog. rept. 13 pp. (1970) (91)
227. Christisen, D.M. 1976. Squirrel production and harvest: hunter cooperators list. Mo. Dept. Conserv. P-R Proj. W-1-R-30, Study XXII, Job no. 1. Prog. Rept. 35 pp. (1971) (45,77)
228. Christisen, D.M., and L.J. Korschgen. 1955. Acorn yields and wildlife usage in Missouri. Trans. N. Amer. Wildl. Conf. 20:337-357. (14,41,66,68,77,81,87,91)
229. Clark, W.K., Jr. 1947. The status of hybrid wild turkeys in Missouri. M.A. Thesis, Univ. of Mo., Columbia. 135 pp. (85)
230. Cofer, H.H. 1939. A summary of information concerning the hawks, eagles, and vultures in Missouri including a general bulletin for public use. M.A. Thesis, Univ. of Mo., Columbia. 55 pp. (60)
231. Crail, L.R. 1953. A study of distribution of waterfowl hunters, distribution of kill, and total kill in the state. Mo. Dept. Conserv. P-R Proj. 13-R-7, Work plan 5, Job no. 3. Prog. rept. 8 pp. (1949) (45,87)
232. Crawford, B.T. 1950. Some specific relationships between soils and wildlife. J. Wildl. Manage. 14(2):115-123. (74,92)
233. Crawford, B.T. 1950. The 1950 wild gobbler roadside count. Mo. Dept. Conserv. P-R Proj. 13-R-4, Work plan 3, Job no. 1. Prog. rept. 5 pp. (85)
234. Crawford, B.T. 1953. Cottontail rabbit census--roadside count inventory. Mo. Dept. Conserv. P-R Proj. 13-R-7, Work plan 6, job no. 1. Prog. rept. 6 pp. (67)
235. Crawford, B.T. 1960. A study of annual wildlife harvests, hunting success and pressure, using the field bag check method (1958). Mo. Dept. Conserv. P-R Proj. 13-R-14, Work plan 10, Job no. 1. Prog. rept. 23 pp. (1951) (45)

Wildlife

236. Crawford, H.S., C.L. Kucera, and J.H. Ehrenreich. 1969. Ozark range and wildlife plants. U.S Dept. Agric. Handbook No. 356. 236 pp: (91)
237. Dahlke, J.S. 1977. A study of red-shouldered hawks and Cooper's hawks along the Meramec River in Missouri. Unpubl. Manuscript. Mo. Dept. Conserv., Columbia. 18 pp.+ (60)
238. Dalke, P.D. 1941. Development of a statewide system of cover mapping applicable to Missouri wildlife range. J. Wildl. Manage. 5:103-105. (93)
239. Dalke, P.D. 1941. The use and availability of the more common winter deer browse plants in the Missouri Ozarks. Trans. N. Amer. Wildl. and Nat. Resourc. Conf. 6:155-160. (14,91)
240. Dalke, P.D. 1947. The beaver in Missouri. Mo. Conservationist 8(6):1-3. (6)
241. Dalke, P.D. 1948. Some observations on den trees in the Missouri Ozarks. J. Wildl. Manage. 12(1):107-109. (41,62,68,77)
242. Dalke, P.D., A.S. Leopold, and D.L. Spencer. 1946. The ecology and management of the wild turkey in Missouri. Mo. Conserv. Comm. Tech. Bull. 1, Jefferson City. 86 pp. (82,84)
243. Dalke, P.D., W.K. Clark, and L.J. Korschgen. 1942. Food habit trends of the wild turkey in Missouri as determined by dropping analysis. J. Wildl. Manage. 6(3):237-243. (81)
244. Dellinger, G.P. 1954. Breeding season, productivity, and population trends of raccoons in Missouri. M.A. Thesis, Univ. of Mo., Columbia. 86 pp. (68)
245. Dellinger, G.P. 1960. A study of deer mobility in the Missouri Ozarks. Mo. Dept. Conserv. P-R Proj. 13-R-14, Work plan 1, Job no. 3. Prog. rept. 4 pp.+ (1958) (15)
246. Dellinger, G.P. 1973. Habitat management for turkeys in the oak-hickory forests of Missouri. pp. 235-244 in G.C. Sanderson and H.C. Schultz, eds. Wild Turkey Management. Mo. Chapter Wildl. Soc. and Univ. Mo. Press, Columbia. 355 pp. (84)

Wildlife

247. Dellinger, G.P., and D.A. Murphy. 1959. A study of population levels and trends in Missouri's deer herds. Mo. Dept. Conserv. P-R Proj. 13-R-13, Work plan 1, Job no. 6. Prog. rept. 12 pp. (18)
248. Dellinger, G.P., and J.B. Lewis. 1959. A study of natural plant succession on bulldozed clearings. Mo. Dept. Conserv. P-R Proj. 13-R-13, Work plan 3, Job no. 4. Prog. rept. 16 pp. (1955) (15,44,74,82,91,93)
249. Dickneite, D.F. 1973. Restoration of the eastern wild turkey in Missouri. pp. 19-24 in G.C. Sanderson and H.C. Schultz, eds. Wild Turkey Management. Mo. Chapter Wildl. Soc. and Univ. of Mo. Press, Columbia. 355 pp. (84)
250. Dunkeson, R.L. 1950. Feeding habits of the white-tailed deer, Odocoileus virginianus, in relation to deer management in the Missouri Ozarks. M.A. Thesis, Univ. of Mo., Columbia. 102 pp. (14,17)
251. Dunkeson, R.L. 1955. Deer range appraisal for the Missouri Ozarks. J. Wildl. Manage. 19(3):358-364. (17,47)
252. Dunkeson, R.L. 1958. A study of deer productivity and breeding season. Mo. Dept. Conserv. P-R Proj. 13-R-12, Work Plan 1, Job no. 5. Prog. rept. 13 pp. (1952) (19,20)
253. Dunkeson, R.L., and D.A. Murphy. 1952. A study of deer browse utilization and availability in the Missouri Ozarks. Mo. Dept. Conserv. P-R Proj. 13-R-6, Work plan 1, Job no. 1. Prog. rept. 24 pp. (14,91)
254. Easterla, D.A., and R.A. Anderson. 1971. Checklist of Missouri Birds. Audubon Soc. of Mo., St. Louis. (60,75)
255. Ehrenreich, J.H., and D.A. Murphy. 1962. A method of evaluating habitat for forest wildlife. Trans. N. Amer. Wildl. Conf. 27:337-383. (47,92)
256. Elder, W.H. 1965. Primeval deer hunting pressures revealed by remains from American Indian middens. J. Wildl. Manage. 29(2):366-370. (15,16,49)
257. Ellis, J.E. 1966. Home range and movements of the eastern wild turkey. M.A. Thesis, Univ. of Mo., Columbia. 100 pp. (82)

Wildlife

258. Ellis, J.E., and J.B. Lewis. 1967. Mobility and annual range of wild turkeys in Missouri. *J. Wildl. Manage.* 31(3):568-581. (82)
259. Evans, R.D. 1962. Breeding characteristics of southeastern Missouri cottontails. *Proc. S.E. Assoc. Game Fish Comm.* 16:140-142. (67)
260. Evans, R.D. 1963. Reproductive parameters of the cottontail in southeast Missouri. M.A. Thesis, Univ. of Mo., Columbia. 53 pp. (67)
261. Evans, R.D., K.C. Sadler, C.H. Conaway, and T.S. Baskett. 1965. Regional comparisons of cottontail reproduction in Missouri. *Amer. Midl. Natur.* 74(1):176-184. (67)
262. Fisher, H.J. 1944. A preliminary study of the prairie vole, Microtus ochrogaster (Wagner), in central Missouri. M.A. Thesis, Univ. of Mo., Columbia. 70 pp. (61)
263. Fisher, H.J. 1945. Notes on voles in central Missouri. *J. Mammal.* 26:435-436. (61)
264. Fisher, H.J. 1951. Notes on the red fox (Vulpes fulva) in Missouri. *J. Mammal.* 27:227-234. (39)
265. Flood, B.S. 1977. Development and testing of a handbook for habitat evaluation procedures. M.S. Thesis, Univ. of Mo., Columbia. 149 pp. (43,44,46,60,61,92)
266. Flood, B.S., M.E. Sangster, R.D. Sparrowe, T.S. Baskett. 1977. A handbook for habitat evaluation procedures. U.S. Fish and Wildlife Service Resource Publ. 132. 77 pp. (43,44,47,60,61,92)
267. Giessman, N.F. 1976. Breeding bird habitats and community organization. M.S. Thesis, Univ. of Mo., Columbia. 83 pp. (60)
268. Gunter, G. 1957. Wildlife and flood control in the Mississippi valley. *Trans. N. Amer. Wildlf. Conf.* 22:189-196. (37,92)
269. Hallett, D.L. 1977. Post-natal mortality, movements, and den sites of Missouri coyotes. M.S. Thesis, Univ. of Mo., Columbia. 144 pp. (12)
270. Harris, V.T. 1941. The relation of small rodents to field borders on agricultural lands in central Missouri. M.A. Thesis, Univ. of Mo., Columbia. 86 pp. (61)

Wildlife

271. Henry, D.L. 1970. Population dynamics and migration of Missouri doves. M.A. Thesis, Univ. of Mo., Columbia. 104 pp. (21)
272. Holten, J.W. 1960. Age determination and populations of swamp rabbits (Sylvilagus aquaticus). M.S. Thesis, Univ. of Mo., Columbia. 56 pp. (67)
273. Holten, J.W., and J.E. Toll. 1960. Winter weights of juvenile and adult swamp rabbits in southeast Missouri. J. Wildl. Manage. 24:229-230. (67)
274. Jackson, G.L. 1963. The breeding behavior of wild mourning doves (Zenaidura macroura). M.A. Thesis, Univ. of Mo., Columbia. 96 pp. (21)
275. Jackson, G.L., and T.S. Baskett. 1964. Perch-cooing and other aspects of breeding behavior of mourning doves. J. Wildl. Manage. 28:293-307. (21)
276. Jackson, J.P. 1977. Letter describing observations of bird species along the Meramec River, May 31 to April 2, 1972 (including two nesting (?) female hooded mergansers). Addressed to D.E. Simpson; dated Dec. 20, 1977. 2 pp. (60)
277. Jeffrey, L. 1937. A preliminary study of the southern grey squirrel, Sciurus carolinensis carolinensis gmelin, in Missouri. M.A. Thesis, Univ. of Mo., Columbia. 53 pp. (77)
278. Johnson, G.W. 1965. A study of habitat requirements for the wild turkey in the Missouri Ozarks. M.A. Thesis, Univ. of Mo., Columbia. 87 pp. (84)
279. Johnson, M.D. 1957. Movements, recaptures frequencies, and duration of residence of fox squirrels released in a new habitat. M.A. Thesis, Univ. of Mo., Columbia. 69 pp. (77)
280. Johnston, J.P., and F.G. Liming. 1944. Reproduction in oak-hickory forest stands in Missouri Ozarks. J. Forestry 42(3):175-180. (91)
281. Jones, S.P. 1947. Migratory and permanent resident birds in the St. Louis region, 3rd ed. 20 pp. (60,75)
282. Korschgen, L.J. 1946. The late fall and early winter food habits of the bobwhite quail in Missouri. M.A. Thesis, Univ. of Mo., Columbia. 136 pp. (66)

Wildlife

283. Korschgen, L.J. 1948. Late fall and early winter food habits of bobwhite quail in Missouri. J. Wildl. Manage. 12(1):46-57. (66)
284. Korschgen, L.J. 1950. Food habits of bobwhite quail in Missouri. Mo. Dept. Conserv. P-R Proj. 13-R-4, Work plan 8, Job no. 1. Prog. rept. 49 pp. (1948) (66)
285. Korschgen, L.J. 1952. A general summary of the foods of Missouri's game and predatory animals. Mo. Dept. Conserv. P-R Series 13-R-4. 61 pp. (43,92)
286. Korschgen, L.J. 1953. Food habits of deer in Missouri. Mo. Dept. Conserv. P-R Proj. 13-R-7, Work plan 8, Job no. 3. Prog. rept. 39 pp. (1949) (14)
287. Korschgen, L.J. 1953. Food habits of waterfowl in Missouri. Mo. Dept. Conserv. P-R Proj. 13-R-7, Work plan 8, Job no. 2. Prog. rept. 45 pp. (1947) (87)
288. Korschgen, L.J. 1954. Food habits of predators in Missouri. Mo. Dept. Conserv. P-R Proj. 13-R-8, Work plan 8, Job no. 1. Prog. Rept. 50 pp. (1948). (9,12,39)
289. Korschgen, L.J. 1954. Food habits of the mourning dove in Missouri. Mo. Dept. Conserv. P-R Proj. 13-R-8, Work plan 8, Job no. 2. Prog. rept. 49 pp. (1953) (21)
290. Korschgen, L.J. 1954. Winter food habits of mink in Missouri. Mo. Dept. Conserv. P-R Proj. 13-R-8, Work plan 8, Job no. 3. Prog. rept. 11 pp. (1953) (56)
291. Korschgen, L.J. 1955. Quantity and availability of some wildlife foods, as determined by ground samples. Mo. Dept. Conserv. P-R Proj. W-13-R-9, Work plan 8, Job no. 1. 8 pp. (21,66,91)
292. Korschgen, L.J. 1957. Food habits of the coyote in Missouri. J. Wildl. Manage. 21(4):424-435. (12)
293. Korschgen, L.J. 1957. Food habits of coyotes, foxes, house cats, and bobcats in Missouri. Mo. Dept. Conserv. P-R Series No. 15. 63 pp. (9,12,39)
294. Korschgen, L.J. 1958. Food habits of the mourning dove in Missouri. J. Wildl. Manage. 22(1):9-16. (21)
295. Korschgen, L.J. 1959. Food habits of the red fox in Missouri. J. Wildl. Manage. 23(2):168-176. (39)

Wildlife

296. Korschgen, L.J. 1962. Foods of Missouri deer, with some management implications. *J. Wildl. Manage.* 26(2):164-172. (14,17)
297. Korschgen, L.J. 1966. Foods and nutrition of ruffed grouse in Missouri. *J. Wildl. Manage.* 30(1):86-100. (44)
298. Korschgen, L.J. 1967. Feeding habits and food. pp. 137-198 in D.H. Hewitt, ed. *The Wild Turkey and its Management.* The Wildlife Society, Washington, D.C. 589 pp. (81)
299. Korschgen, L.J. 1970. Foods of cottontail rabbits in Missouri. Mo. Dept. Conserv. P-R Proj. 13-R-24, Work plan 8, Job no. 4. Prog. rept. 10 pp. (67)
300. Korschgen, L.J. 1970. April foods of wild turkeys in Missouri. Mo. Dept. Conserv. P-R Proj. 13-R-24, Work plan 8, Job no. 3. Prog. rept. 13 pp.+ (1969) (81)
301. Korschgen, L.J. 1973. April foods of wild turkeys in Missouri. pp. 143-150 in G.C. Sanderson and H.C. Schultz, eds. *Wild Turkey Management.* Mo. Chapt. Wildl. Soc. and Univ. of Mo. Press, Columbia. 355 pp. (81)
302. Korschgen, L.J. 1974. Principal year-round foods of cottontails in Missouri. Mo. Dept. Conserv. P-R Proj. W-13-R-28, Study XXV, Job no. 1. Final rept. 14 pp.+ tables. (1971) (67)
303. Korschgen, L.J., W.R. Porath, and O.A. Torgerson. 1976. Spring and summer foods of deer in Ozark forests. Mo. Dept. Conserv. P-R Proj. W-13-R-30, Study XXVI, Job no. 1. Final rept. 55 pp. (1974) (14)
304. Korte, P.A. 1975. Distribution and habitat requirements of the swamp rabbit in Missouri. M.S. Thesis, Univ. of Mo., Columbia. 127 pp. (67)
305. Leopold, A.S. 1931. Report on a game survey of the North Central States. *Sporting Arms and Amm. Mfrs. Institute,* Madison, Wisconsin. 299 pp. (41,43)
306. Leopold, A.S., and P.D. Dalke. 1943. The 1942 status of the wild turkey in Missouri. *J. Forestry* 41(6):428-435. (82)
307. Lewis, J.B. 1957. Annual winter inventory of wild turkey population. Mo. Dept. Conserv. P-R Proj. 13-R-11, Work Plan 3, Job No. 1. Prog. rept. 6 pp. (85)

Wildlife

308. Lewis, J.B. 1960. Analysis of 1960 turkey season information. Mo. Dept. of Conserv. P-R Proj. 13-R-14. Work plan 3, Job no. 6. Prog. rept. 4 pp.+ (83)
309. Lewis, J.B. 1961. Wild turkeys in Missouri, 1940-60. Trans. N. Amer. Wildl. and Nat. Resources Conf. 26: 505-513. (82)
310. Lewis, J.B. 1965. Evaluation of stocking wild turkeys on selected areas in the state. Mo. Dept. Conserv. P-R Proj. 13-R-19, Work plan 3, Job no. 2. Prog. rept. 7 pp. (1956). (84)
311. Lewis, J.B. 1967. Management of the eastern turkey in the Ozarks and bottomland hardwoods. pp. 371-407 in O.H. Hewitt, ed. The Wild Turkey and its Management. The Wildlife Society. 589 pp. (84)
312. Lewis, J.B. 1970. Statewide wild turkey population studies. Mo. Dept. Conserv. P-R Proj. 13-R-24, Work plan 3, Job no. 1. Prog. rept. 11 pp. (1959) (85)
313. Lewis, J.B. 1976. Wild turkey trapping-banding-recovery program at Lake Spring and harvest mortality on gobblers. Mo. Dept. Conserv. P-R Proj. W-13-R-30, Study VIII, Job nos. 1 and 2. Prog. rept. 8 pp. (1971) (83,85)
314. Lewis, J.B. 1977. Impact of current land-use practices on the turkey population of the Lake Spring area. Mo. Dept. Conserv. P-R Proj. W-13-R-30, Study VIII, Job no. 3. Prog. rept. 7 pp. (1974) (84)
315. Lewis, J.B. 1977. Statewide wild turkey survey. Mo. Dept. Conserv. P-R Proj. W-13-R-30 (1976), Study VII, Job nos. 1, 2, and 3. Prog. rept. 28 pp. (1971) (82,85,86)
316. Lewis, J.B. 1977. Statewide wild turkey survey: evaluation of restocked areas. Mo. Dept. Conserv. P-R Proj. W-13-R-30, Study VII, Job no. 4. Final rept. 8 pp. (1976) (84,85)
317. Lewis, J.B., and G. Kelly. 1973. Mortality associated with the spring hunting of gobblers. pp 295-299 in G.C. Sanderson and H.C. Schultz, eds. Wild Turkey management. Mo. Chapter Wildl. Soc. and Univ. of Mo. Press, Columbia. 355 pp. (83)

Wildlife

318. Lewis, J.B., D.A. Murphy, and J.H. Ehrenreich. 1964. Effects of burning dates on vegetative production on Ozarks forests. Proc. S.E. Assoc. Game Fish Comm. 18:63-73. (14,91,93)
319. Lewis, J.B. 1958. Trends in the wild turkey population in the Missouri Ozarks. Proc. Soc. Amer. For. 1957: 92-94. (85)
320. Marsden, H.M. 1963. Social behavior in the cottontail rabbit. Ph.D. Diss., Univ. of Mo., Columbia. 124 pp. (67)
321. Martin, S.C., R.L. Dunkeson, and T.S. Baskett. 1955. Timber harvests help offset forage decline in Missouri's managed forests. J. Forestry 53(7):513-516. (14,91,93)
322. Martinson, R.K. 1961. Age and sex characteristics of a swamp rabbit (Sylvilagus aquaticus) population. M.A. Thesis, Univ. of Mo., Columbia. 81 pp. (67)
323. Martinson, R.K., J.W. Holten, and G.K. Brakhage. 1961. Age criteria and population dynamics of the swamp rabbit in Missouri. J. Wildl. Manage. 25:271-280. (67)
324. Mendel, J.J. 1961. Timber resources of the eastern Ozarks. Univ. of Mo. Agric. Exp. Sta. Bull. 779. 74 pp. (38)
325. Milonski, M.C. 1958. The significance of farmland for waterfowl nesting and techniques for reducing losses due to agricultural practices. M.A. Thesis, Univ. of Mo., Columbia. 81 pp. (87,89)
326. Missouri Conservation Commission. 1943. Report of wildlife habitat and population surveys on 38 major soil types in Missouri. Volumes 3-7. Federal Aid to Wildlife Program, Mo. 1-SR. Jefferson City. (41,43,44,45,74,80, 87,89,91,92,93)
327. Missouri Conservation Commission. 1949. Meramec watershed wildlife survey and management plan. Appendix 4 in a program for the Meramec River Basin, Meramec Cooperative Investigation Field Committee. 14 pp. (64,92,93)
328. Missouri Department of Conservation. (No Date). Annual records of deer distribution by counties and specific within counties. Unpubl. data, Columbia. (15)

Wildlife

329. Missouri Department of Conservation. 1960 et seq. County maps showing specific locations of turkey kills. Unpubl. data, Columbia. (83)
330. Missouri Department of Conservation. 1970 et seq. County maps showing specific locations of deer kills. Unpubl. data, Columbia. (16)
331. Missouri Department of Conservation. 1972. Wildlife habitat at Union Lake. Prepared for the U.S. Army Corps of Engineers, St. Louis District. (92,93)
332. Murphy, D.A. 1954. Analysis of (deer) age and sex composition, weight, antler size, and productivity as expressed by the annual kill. Mo. Dept. Conserv. P-R Proj. 13-R-8, Work plan 1, Job no. 2. Prog. rept. 17 pp.+ (1953) (16,18,19)
333. Murphy, D.A. 1959. A study of disease and parasitism in Missouri's deer herd. Mo. Dept. Conserv. P-R Proj. 13-R-13, Work plan 1, Job no. 4. Prog. rept. 3 pp. (1955) (15)
334. Murphy, D.A. 1959. Analysis of deer weight station data. Mo. Dept. Conserv. P-R Proj. 13-R-13, Work plan 1, Job no. 2. Prog. rept. 10 pp.+ (1955) (16)
335. Murphy, D.A. 1961. A study of herd composition, condition and productivity. Mo. Dept. Conserv. P-R Proj. 13-R-15, Work plan 1, Job no. 2. Prog. rept. 8 pp.+ (1960) (18,19)
336. Murphy, D.A. 1961. Deer harvest from refuge areas in Missouri. Proc. S.E. Assoc. Game Fish Comm. 15: 37-42. (16)
337. Murphy, D.A. 1963. A captive elk herd in Missouri. J. Wildl. Manage. 27(3):411-414. (92)
338. Murphy, D.A. 1964. Analysis of deer weight station data. Mo. Dept. Conserv. P-R Proj. 13-R-18, Work plan 1, Job no. 4. Prog. rept. 7 pp.+appendices. (16)
339. Murphy, D.A. 1968. Deer range appraisal in the Midwest. Paper presented at the 30th Midwest Fish and Wildl. Conf., Columbus, Ohio. (17,47)
340. Murphy, D.A. 1968. Deer population studies. Mo. Dept. Conserv. P-R Proj. 13-R-22, Work plan 1, Job no. 1. Prog. rept. 17 pp.+6 pp. Summary. (1960) (18)

Wildlife

341. Murphy, D.A., R.L. Dunkeson, and G.P. Dellinger. 1958. A study of population levels and trends in Missouri's deer herd. Mo. Dept. Conserv. P-R Proj. 13-R-12, Work plan 1, Job no. 6. Prog. rept. (pp. unnumbered). (1955) (18)
342. Murphy, D.A., and H.S. Crawford. 1970. Wildlife foods and understory vegetation in Missouri's national forests. Mo. Dept. Conserv., Tech. Bull. No. 4. 47 pp. (14,38,77,81,91)
343. Murphy, D.A., and J.H. Ehrenreich. 1965. Fruit-producing trees and shrubs in Missouri's Ozark forests. J. Wildl. Manage. 29(3):497-503. (91)
344. Murphy, D.A., and T.S. Baskett. 1952. Bobwhite quail mobility in central Missouri. J. Wildl. Manage. 16(4):498-510. (66)
345. Murphy, D.A., and W.R. Porath. 1969. Forest soils and game nutrition. Proc. S.E. Assoc. Game Fish Comm. 23: 18-25. (74,91)
346. Murphy, D.A., and W.R. Porath. 1969. An analysis of the 1968 deer harvest. Mo. Dept. Conserv. P-R Proj. 13-R-23, Work plan 1, Job No. 4. Prog. rept. 16 pp. (16)
347. Murphy, D.A., G.D. Dellinger, and R.L. Dunkeson. 1956. A study of deer use of available forage in Missouri. Mo. Dept. Conserv. P-R Proj. 13-R-10, Work plan 1, Job no. 1. Prog. rept. 11 pp. (1953) (14,91)
348. Nagel, W.O. 1934. Relationships between diet and extent of parasitism in bobwhite quail. Wilson Bull. 46, Sept. 1934:147-149. (66)
349. Nagel, W.O. 1946. The beaver-history maker-is coming back. Mo. Conservationist 7(9):6,7,16. (6)
350. Nagel, W.O. 1953. The harvests, economic values, and soil fertility relationships of Missouri furbearers. Mo. Dept. Conservation P-R Projects 1-5R; 1-9R. 42 pp. (41,42,73,74)
351. Nevins, R.B., and L.G. Brenner. 1949. Beaver taste in trees. Mo. Bot. Gard. Bull. 37(5):110-114. (6)

Wildlife

352. Noren, C.R. 1941. A preliminary study of the eastern raccoon, Procyon lotor lotor (Linnaeus), in Missouri: population, denning, and food habits. M.A. Thesis, Univ. of Mo., Columbia. 83 pp. (68)
353. Palmer, D.B. 1972. Siphonaptera occurring on Missouri mammals. Trans. Mo. Acad. Sci. 6:43-55. (43,52,61)
354. Porath, W.R. 1968. Analysis of deer weight station data. Mo. Dept. Conserv. P-R Proj. 13-R-22, Work plan 1, Job no. 3. Prog. rept. 10 pp. (16)
355. Porath, W.R. 1969. Missouri deer studies: range analysis studies. Mo. Dept. Conserv. P-R Proj. 13-R-23, Work plan 1, Job no. . Prog. rept. 4 pp. (15,18)
356. Porath, W.R. 1971. An analysis of the 1969 deer harvest. Mo. Dept. Conserv. P-R Proj. 13-R-24, Work plan 1, Job no. 1. Prog. rept. 4 pp. (16)
357. Porath, W.R. 1971. Deer population research. Mo. Dept. Conserv. P-R Proj. 13-R-24, Work plan 1, Job no. 1. Prog. rept. 5 pp. (1969) (18)
358. Porath, W.R., and O.A. Torgerson. 1976. Deer harvest analysis and season recommendations. Mo. Dept. Conserv. P-R Proj. no. W-13-R-30, Study II, Job no. 2. Prog. rept. 74 pp. (1972) (16,17)
359. Porath, W.R., and O.A. Torgerson. 1975. Deer population trend measurements. Mo. Dept. Conserv. P-R Proj. W-13-R-29, Study II, Job no. 1. Prog. rept. 19 pp. (1972) (18)
360. Porath, W.R., W.I. Phillips, and O. Torgerson. 1975. Response of preferred wildlife foods to prescribed burning on old field sites. Mo. Dept. Conserv. P-R Proj. W-13-R-29, Study 1, Job no. 1. Final rept. 30 pp. (1972) (91)
361. Progulske, D.R. 1956. Movements and home ranges of deer in Missouri. Ph.D. Diss., Univ. of Mo., Columbia. 86 pp. (15)
362. Reynolds, H.C. 1942. A contribution to the life history and ecology of the opossum, Didelphis virginiana (Kerr), in central Missouri. M.A. Thesis, Univ. of Mo., Columbia. 81 pp. (62)

Wildlife

363. Reynolds, H.C. 1945. Some aspects of the life history and ecology of the opossum in central Missouri. *J. Mammal.* 26(4):361-379. (62)
364. Rowe, K.C. 1947. Population studies of cottontails *Sylvilagus floridanus* (Allen) in central Missouri and effect of commercial shipping of live rabbits. M.A. Thesis, Univ. of Mo., Columbia. 140 pp. (67)
365. Rowe, K.C. 1950. Cottontail rabbit census. Mo. Dept. Conserv. P-R Proj. 13-R-5, Work plan 6, Job no. 1, Prog. rept. 11 pp. (1948) (67)
366. Rowe, K.C. 1950. Rabbit harvest. Mo. Dept. Conserv. P-R Proj. 13-R-4, Work plan 6, Job no. 1-B. Prog. rept. 24 pp. (1948) (45,67)
367. Sadler, K.C. 1954. Wild turkey population study. Mo. Dept. Conserv. P-R Proj. 13-R-8, Work plan 3, Job no. 1. Prog. rept. 10 pp. (1952) (85)
368. Sadler, K.C. 1970. Cottontail rabbit production and population inventories. Mo. Dept. Conserv. P-R Proj. 13-R-24, Work plan 6, Job no. 1. Prog. rept. 15 pp. (1961) (67)
369. Sadler, K.C. 1971. Roadside dove census. Mo. Dept. Conserv. P-R Proj. 13-R-24, Work plan 7, Job no. 1. Prog. rept. 9 pp. (1961) (21)
370. Sadler, K.C. 1976. Cottontail production and population inventory. Mo. Dept. Conserv. P-R Proj. W-13-R-30, Study XVII, Job nos. 1 and 2. Prog. rept. 18 pp. (1971) (67)
371. Sadler, K.C. 1976. Roadside census of mourning doves. Mo. Dept. Conserv. P-R Proj. W-13-R-30, Study XVII, Job no. 1. Prog. rept. 13 pp. (1972) (21)
372. Sadler, K.C. 1977. Cottontail population dynamics. Mo. Dept. Conserv. P-R Proj. W-13-R-30, Study XVIII, Job nos. 1, 2, and 3. Prog. rept. 20 pp. (1972) (67)
373. Sadler, K.C. 1977. Mourning dove trapping and banding. Mo. Dept. Conserv. P-R Proj. W-13-R-30, Study XX, Job no. 1. Prog. rept. 10 pp. (1972) (21)
374. Sampson, F.W. 1951. Population index and trends of mink, muskrat, and raccoon. Mo. Dept. Conserv. P-R Proj. 13-R-5, Work plan 4, Job no. 1. Prog. rept. 14 pp. (56,58,68)

Wildlife

375. Sampson, F.W. 1957. Population trends of furbearers--red and gray foxes (also miscellaneous data on other species--opossum, beaver, skunk, weasel). Mo. Dept. Conserv. P-R Proj. 13-R-11, Work plan 4, Job no. 4. Prog. rept. 8 pp. (1951) (6,39,41,62)
376. Sampson, F.W. 1961. Economics of Missouri's wild fur trade. Business and government review, School of Business and Public Administration Research Center, Univ. of Mo., Columbia. Vol. 2, No. 6, Nov.-Dec. 1961. pp. 5-13. (45,73)
377. Sampson, F.W. 1964. Hunter attitude survey. Mo. Dept. Conserv. P-R Proj. 13-R-18, Work plan 10, Job no. 3. Prog. rept. 29 pp. (45,73)
378. Sampson, F.W. 1965. Farmer attitude survey. Mo. Dept. Conserv. P-R Proj. 13-R-18, Work plan 10, Job no. 4. Prog. rept. 11 pp. (45,73)
379. Sampson, F.W. 1965. Mink population trends. Mo. Dept. Conserv. P-R Proj. 13-R-19, Work plan 4, Job no. 3. Prog. rept. 8 pp. (1952) (56)
380. Sampson, F.W. 1965. Muskrat population trends. Mo. Dept. Conserv. P-R Proj. 13-R-19, Work plan 4, Job no. 1. Prog. rept. 8 pp. (1952) (58)
381. Sampson, F.W. 1965. Raccoon population trends. Mo. Dept. Conserv. P-R Proj. 13-R-19, Work plan 4, Job no. 2. Prog. rept. 8 pp. (1952) (68)
382. Sampson, F.W. 1965. Population trends in canids and bobcats. Mo. Dept. Conserv. P-R Proj. 13-R-19. Work plan 4, Job no. 4. Prog. rept. 16 pp. (1952) (9,12)
383. Sampson, F.W. 1969. Analysis of fur harvests in Missouri, 1968-69. Mo. Dept. Conserv. P-R Proj. 13-R-24, Work plan 4, Job no. 1. Prog. rept. 13 pp. (1951) (42)
384. Sampson, F.W. 1969. Small game harvest-hunter contact field bag check (1968-69). Mo. Dept. Conserv. P-R Proj. 13-R-24, Work plan 10, Job no. 1. Prog. rept. 13 pp. (1962) (45)
385. Sampson, F.W. 1970. Examination of age and sex ratios in muskrat, raccoon, and mink harvests 1969-70. Mo. Dept. Conserv. P-R Proj. 13-R-24, Work plan 4, Job no. 2. Prog. rept. 14 pp. (1966) (42,55,56,68)

Wildlife

386. Sampson, F.W. 1970. Post-season small game harvest mail survey 1969-70. Mo. Dept. Conserv. P-R Proj. 13-R-24, Work plan 10, Job no. 2. Prog. rept. 15 pp.+figures. (1964) (45)
387. Sampson, F.W. 1970. Survey of coyote and bobcat county bounties (1969). Mo. Dept. Conserv. P-R Proj. 13-R-24, Work plan 4, Job no. 3. Prog. rept. 13 pp. (1966) (9,12,45)
388. Sampson, F.W. 1975. Furbearer harvest survey 1974-75. Mo. Dept. Conserv. P-R Proj. W-13-R-30, Study X, Job no. 1. Prog. rept. 12 pp. (1970) (42)
389. Sampson, F.W. 1976. Muskrat, raccoon, and mink productivity research. Mo. Dept. Conserv. P-R Proj. W-13-R-30, Study XI, Job nos. 1, 2, and 3. Prog. rept. 16 pp. (1971) (56,58,68)
390. Sampson, F.W. 1976. Post-season small game harvest mail survey 1975-76. Mo. Dept. Conserv. P-R Proj. W-13-R-30, Study XXX, Job no. 1. Prog. rept. 25 pp. (1971) (45)
391. Sampson, F.W. 1976. Survey of bountied species (1975). Mo. Dept. Conserv. P-R Proj. W-13-R-30, Study X, Job no. 2. Prog. rept. 12 pp. (1971) (42,45)
392. Sanderson, G.C. 1949. Sex and age determination, breeding habits and population characteristics of Missouri raccoons. M.A. Thesis, Univ. of Mo., Columbia. 158 pp. (68)
393. Sanderson, G.C. 1950. Methods of measuring productivity in raccoons. J. Wildl. Manage. 14(4):389-402. (68)
394. Sanderson, G.C. 1951. Breeding habits and a history of the Missouri raccoon population from 1941 to 1948. Trans. N. Amer. Wildl. Conf. 16:445-461. (68)
395. Sather, J.H. 1948. A method of measuring cover density and its application to quail range. M.A. Thesis, Univ. of Mo., Columbia. 70 pp. (47,66)
396. Schwartz, C.W. 1940. Breeding season and home range of the cottontail, Sylvilagus floridanus (Allen), in central Missouri. M.A. Thesis, Univ. of Mo., Columbia. 66 pp. (67)

Wildlife

397. Schwartz, C.W. 1941. Home range of the cottontail in central Missouri. *J. Mammal.* 22:386-392. (67)
398. Schwartz, C.W. 1942. Breeding season of the cottontail in central Missouri. *J. Mammal.* 23:1-6. (67)
399. Schwartz, C.W. 1944. The prairie chicken in Missouri. *Mo. Conserv. Comm.* 182 pp. (44)
400. Schwartz, C.W. 1945. The ecology of the prairie chicken in Missouri. *Univ. of Mo. Studies* 20(1):1-99. (44)
401. Schwartz, C.W., and E.R. Schwartz. 1974. The wild mammals of Missouri. *Univ. of Mo. Press and Mo. Dept. Conserv., Columbia.* 341 pp. (3,4,5,6,9,12,15,39,41,43,56,58,61,62,67,68,77)
402. Schwarz, F. 1920. Mammals of Missouri. *Bull. St. Louis Nat. Hist. Mus. Assoc.* 1:38-44. (43,61)
403. Shanks, C.E. 1947. Populations, productivity, movements, and food of Missouri muskrats. M.A. Thesis, Univ. of Mo., Columbia. 123 pp. (58)
404. Shanks, C.E. 1961. Missouri's game populations. *Business and Economic Review.* Univ. of Mo., Vol. 2, No. 1, Jan.-Feb. pp. 32-41. (43,73)
405. Shanks, C.E., and G.C. Arthur. 1951. Movements and population dynamics of farm pond and stream muskrats in Missouri. *Mo. Dept. Conserv. P-R Series* 13-R. 12 pp. (58)
406. Shanks, C.E., and G.C. Arthur. 1952. Muskrat movements and population dynamics in Missouri farm ponds and streams. *J. Wildl. Manage.* 16:138-148. (58)
407. Skinner, R.M. 1974. Grassland use patterns and prairie bird populations. M.A. Thesis, Univ. of Mo., Columbia. 53 pp. (44,60)
408. Smith, C.C., and D. Follmer. 1972. Food preferences of squirrels. *Ecology* 53:82-91. (77)
409. Snider, C.C., and S.M. Asplund. 1974. *In vitro* digestibility of deer foods from the Missouri Ozarks. *J. Wildl. Manage.* 28(1):20-31. (14)

Wildlife

410. Stanford, J., and B.T. Crawford. 1951. Cottontail rabbit census--roadside count inventory. Mo. Dept. Conserv. P-R Proj. 13-R-7, Work plan 6, Job no. 1. Prog. rept. 6 pp. (67)
411. Stanford, J.A. 1953. Early summer bobwhite quail population survey. Mo. Dept. Conserv. P-R Proj. 13-R-7, Work plan 2, Job no. 3. Prog. rept. 4 pp. (1952) (66)
412. Stanford, J.A. 1953. Fall bobwhite quail population survey. Mo. Dept. Conserv. P-R Proj. 13-R-7, Work plan 2, Job no. 4. Prog. rept. 6 pp. (66)
413. Stanford, J.A. 1954. Missouri bobwhite quail population and production survey. Mo. Dept. Conserv. P-R Proj. 13-R-8, Work plan 2, Job no. 1. Prog. rept. 8 pp. (1950) (66)
414. Stanford, J.A. 1954. Multiflora rose fence and cover planting investigation: utilization by wildlife. Mo. Dept. Conserv. P-R Proj. 13-R-8, Work plan 2, Job no. 4. Prog. rept. 12 pp. (91)
415. Stanford, J.A. 1962. Investigation of grain producing plant species and mixtures suitable for quail food patch plantings throughout Missouri. Mo. Dept. Conserv. P-R Proj. 13-R-16, Work plan 2, Job no. 4. Prog. rept. 10 pp. (66,91)
416. Stanford, J.A. 1970. Dynamics of bobwhite quail in Missouri: production and harvest season investigations. Mo. Dept. Conserv. P-R Proj. 13-R-24, Work plan 2, Job no. 2. Prog. rept. 20 pp. (1953) (66)
417. Stanford, J.A. 1976. Bobwhite quail population dynamics in Missouri--effects of weather on production and harvest. Mo. Dept. Conserv. P-R Proj. W-13-R-30, Study IV, Job nos. 1 and 2. Prog. rept. 24 pp. (1971) (45,66)
418. Stanford, J.A. 1976. Land-use and wildlife habitat analysis in Missouri. Mo. Dept. Conserv. P-R Proj. W-1-R-30, Study VI, Job nos. 1 and 2. Prog. rept. 167 pp. (1974) (47,66,89,91)
419. Taylor, T.S. 1977. Avian use of moist soil impoundments in southeastern Missouri. M.S. Thesis, Univ. of Mo., Columbia. 98 pp. (60)

Wildlife

420. Terrill, H.B. 1941. A preliminary study of the western fox squirrel, Sciurus niger rufiventer (Geoffrey), in Missouri. M.A. Thesis, Univ. of Mo., Columbia. 164 pp. (77)
421. Titus, R.R. 1976. Habitat utilization by ruffed grouse in the Missouri Ozarks. M.S. Thesis, Univ. of Mo., Columbia. 118 pp. (44)
422. Toll, J.E. 1958. Life history of the swamp rabbit (Sylvilagus aquaticus) in Missouri. M.S. Thesis, Univ. of Mo., Columbia. 61 pp. (67)
423. Toll, J.E., T.S. Baskett, and C.H. Conaway. 1960. Home range, reproduction, and food of the swamp rabbit in Missouri. Amer. Midl. Natur. 63(2):398-412. (67)
424. Tomlinson, R.E., H.M. Wight, and T.S. Baskett. 1960. Migrational homing, local movements, and mortality of mourning doves in Missouri. Trans. N. Amer. Wildl. Conf. 25:253-267. (21)
425. Torgerson, O. 1970. In vitro digestibility of cellulose and chemical composition of preferred foods of Missouri white-tailed deer. M.A. Thesis, Univ. of Mo., Columbia. 68 pp. (14)
426. Torgerson, O., and W.H. Pfander. 1971. Cellulose digestibility and chemical composition of Missouri deer foods. J. Wildl. Manage. 35(2):221-231. (14)
427. Torgerson, O., and W. Porath. 1974. Analysis of deer weight station data. Mo. Dept. Conserv. P-R Proj. W-13-R-27, Study II, Job no. 1. Prog. rept. 13 pp. (1972) (16)
428. Torgerson, O., and W. Porath. 1976. Nutritional value of Missouri deer foods. Mo. Dept. Conserv. P-R Proj. W-13-R-29, Study I, Job no. 2. Final rept. 34 pp. (1972) (14)
429. Turner, A.D. 1973. Seasonal movements and habitat use by deer in north-central Missouri. M.A. Thesis, Univ. of Mo., Columbia. 45 pp. (15,17)
430. Twichell, A.R. 1938. A preliminary study of the southern woodchuck, Marmota monax monax (Linn.), in Missouri. M.A. Thesis, Univ. of Mo., Columbia. 89 pp. (94)

Wildlife

431. Twichell, A.R. 1949. Analysis of fur take in Missouri. Mo. Dept. Conserv. P-R Proj. 13-R-2, Work plan 4, Job no. 3. Prog. rept. 9 pp. (1947) (42)
432. Twichell, A.R. 1949. Population index of mink and raccoon. Mo. Dept. Conserv. P-R Proj. 13-R-2, Work plan 4, Job no. 2. Prog. rept. 6 pp. (1948) (56,68)
433. Twichell, A.R. 1951. Missouri furbearers. Mo. Conserv. Comm., Jefferson City. 20 pp. (41)
434. U.S. Forest Service. (In press). Wildlife habitat program evaluation--National Forest, Missouri. Mark Twain National Forest, Rolla. (46,93)
435. U.S. Forest Service. (No date). Habitat analysis and management recommendations by compartment for national forest land. On file at Mark Twain National Forest Supervisor's Office, Rolla. (93)
436. U.S. Forest Service. 1970. White-tailed deer in the Midwest. N. Cent. Forest Exp. Sta., St. Paul, Minn. 34 pp., Illus. (USDA Forest Serv. Res. Pap. NC-39). (15)
437. U.S. Forest Service. 1973. Wildlife habitat management guide for the national forests in Missouri. Mark Twain National Forest, Rolla. (15,38,60,77,82,89,91,93)
438. Widmann, O. 1907. A preliminary catalog of the birds of Missouri. Trans. Acad. Sci. St. Louis 17:1-288. (60,75)
439. Widmann, O. 1909. Summer birds of Shaw's Garden. Report Mo. Bot. Garden 20:41-80. (60,75)
440. Wight, H.M. 1960. Cottontail rabbit production and population inventories. Mo. Dept. Conserv. P-R Proj. 13-R-14, Work plan 6, Job no. 1. Prog. rept. 10 pp.+ (1954) (67)
441. Wight, H.M. 1960. Roadside dove census. Mo. Dept. Conserv. P-R Proj. 13-R-14, Work plan 7, Job no. 1. Prog. rept. 4 pp.+ (1950) (21)
442. Wight, H.M. 1961. Cottontail rabbit production studies. Mo. Dept. Conserv. P-R Proj. 13-R-14, Work plan 6, Job no. 2. Prog. rept. 45 pp. (67)

Wildlife

443. Wight, H.M., and C.H. Conaway. 1961. Weather influences on the onset of breeding in Missouri cottontails. *J. Wildl. Manage.* 25:87-89. (67)
444. Williams. C.E., and A.L. Cashey. 1965. Soil fertility and cottontail fecundity in southeast Missouri. *Amer. Midl. Natur.* 74:211-224. (67,74)
445. Zwank, P.J. 1974. Refuges as population centers for deer in threatened habitat. M.S. Thesis, Univ. of Mo., Columbia. 70 pp. (17)

BATS

446. Barbour, R.W., and W.H. Davis. 1969. Bats of America. Univ. Press Kentucky, Lexington. 286 pp. (3,4,5)
447. Brady, J.T. 1976. Efforts by the St. Louis District, Corps of Engineers, to preserve Myotis sodalis and other cave-dwelling bats at Meramec Park Lake, Missouri. Paper presented at Seventh Annual North American Symposium on Bat Research, Gainesville, Florida, Oct. 15-16. (3,4,5)
448. Brady, J.T. 1976. Efforts by the St. Louis District, Corps of Engineers, to preserve Myotis sodalis and other cave-dwelling bats at Meramec Park Lake, Missouri. Paper presented at 38th Midwest Fish and Wildl. Conf., Dearborn, Michigan, Dec. 5-8. (3,4,5)
449. Brady, J.T. 1977. Cave management for endangered bats and other purposes by the St. Louis District, Corps of Engineers, at Meramec Park Lake, Missouri. Paper presented at the Third National Cave Management Symposium, Big Sky, Montana, Oct. 3-7. (3,4,5,10)
450. Clawson, R.L., R.K. LaVal, W. Caire, and M.L. LaVal. 1976. Clustering behavior of hibernating Myotis sodalis as a function of microhabitat. Unpubl. manuscript, Mo. Dept. Conserv., Columbia. 12 pp. (5)
451. Clawson, R.L., R.K. LaVal, M.L. LaVal, and W. Caire. (in prep.) Clustering behavior of hibernating Myotis sodalis in Missouri. Mo. Dept. Conserv., Columbia. (5)
452. Cope, J.B., A.R. Richter, and R.S. Mills. 1974. A summer concentration of the Indiana bat, Myotis sodalis, in Wayne County, Indiana. Proc. Indiana Acad. Sci. 83:482-484. (5)
453. Cope, J.B., and S.R. Humphrey. 1977. Spring and summer swarming behavior in the Indiana bat, Myotis sodalis. J. Mammal. 58(1):93-94. (5)
454. Davis, W.H., and W.Z. Lidicker, Jr. 1955. Myotis subulatus in Missouri. J. Mammal. 36:288-289. (3)
455. DeBlase, A.F., S.R. Humphrey, and K.S. Drury. 1965. Cave flooding and mortality in bats in Wind Cave, Kentucky. J. Mammal. 46(1):96. (3)

Bats

456. Easterla, D.A., and L.C. Watkins. 1969. Pregnant Myotis sodalis in northwestern Missouri. J. Mammal. 50:372-373. (5)
457. Engel, J.M. 1976. The Indiana bat, Myotis sodalis, a bibliography. U.S. Fish and Wildlife Service Special Scientific Rept.-Wildlife No. 196. 11 pp. (5)
458. Engel, J.M., R.E. Mumford, R.L. Martin, T.H. Hooper, F.R. Courtsel, L.E. Terry, and J.R. Messerli. 1976. Recovery plan for the Indiana bat. U.S. Fish and Wildlife Service, Washington, D.C. 34 pp. (5)
459. Greenhall, A.M. 1973. The Indiana Bat: a cave dweller in trouble. Natl. Parks and Conserv. Mag. 47(8): 14-17. (5)
460. Gunier, W.J. 1974. Caves and bats endangered. pp. 13-16 in Meramec Valley Symposium. Mo. Speleology 14(1). 39 pp. (3,4,5,11)
461. Gunier, W.J., and W.H. Elder. 1971. Experimental homing of gray bats to a maternity colony in a Missouri barn. Amer. Midl. Natur. 86(2):502-506. (4)
462. Gunier, W.J., and W.H. Elder. 1973. New records of Myotis leibii from Missouri. Amer. Midl. Natur. 89(2):489-490. (3)
463. Hall, J.S. 1962. A life history and taxonomic study of the Indiana bat, Myotis sodalis. Reading Pub. Mus. and Art Gallery, Sci. Publ. 12:1-68. (5)
464. Hall, J.S. 1972. The status of Myotis sodalis, the Indiana bat, in West Virginia. W. Va. Nat. Res. Spec. Bull., August. 4 pp. (5)
465. Hall, J.S. 1975. The status of the Indiana bat in the Monongahela National Forest. Wayne-Hoosier Natl. For., Spec. Rept. (5)
466. Hassell, M.A. 1967. Intra-cave activity of four species of bats hibernating in Kentucky. Ph.D. Diss., Univ. Kentucky, Lexington. 65 pp. (3)

Bats

467. Henshaw, R.E., and G.E. Folk, Jr. 1966. Relation of thermoregulation to seasonally changing microclimate in two species of bats (Myotis lucifugus and Myotis sodalis). *Physiol. Zool.* 39:223-236. (5)
468. Humphrey, S.R. 1972. Conservation approaches directed by bat biology patterns. Third N. Amer. Symp. Bat Res., San Diego, Cal. 1 p. (3)
469. Humphrey, S.R. 1976. Status of Indiana bat populations at Meramec Park Lake Project, 1976. Report to U.S. Army Corps of Engineers, St. Louis Dist. 7 pp. (5)
470. Humphrey, S.R. 1977. Status, winter habitat, and management of the endangered Indiana bat, Myotis sodalis. Unpubl. manuscript, Florida State Museum, Univ. of Florida, Gainesville. 18 pp.+ (5)
471. Humphrey, S.R., and J.B. Cope. 1976. Population ecology of the little brown bat, Myotis lucifugus, in Indiana and north-central Kentucky. *Amer. Soc. Mammal., Spec. Publ. No. 4*:1-81. (3)
472. Humphrey, S.R., and J.B. Cope. 1977. Survival rates of the endangered Indiana bat, Myotis sodalis. *J. Mammal.* 58(1):32-36. (5)
473. Humphrey, S.R., J.B. Cope, A.R. Richter, and P.P. Humphrey. 1974. Summer ecology of the endangered Indiana Bat. Fifth N. Amer. Symp. Bat Res. Texas Tech Univ., Lubbock. 1 p. (5)
474. Humphrey, S.R., A.R. Richter, and J.B. Cope. 1977. Summer habitat and ecology of the endangered Indiana bat, Myotis sodalis. *J. Mammal.* 58(3):334-346. (5)
475. Jones, C. 1971. The status of populations of bats in the United States. Paper presented at N. Amer. Symp. Bat Res., Albuquerque, New Mexico. (3)
476. Kunz, T.H. 1973. Resource utilization: temporal and spatial components of bat activity in central Iowa. *J. Mammal.* 54:14-32. (3)
477. LaVal, R.K. 1967. Records of bats from the southeastern United States. *J. Mammal.* 48(4):645-648. (3)

Bats

478. LaVal, R.K., R.L. Clawson, W. Caire, L.R. Wingate, and M.L. LaVal. 1977. An evaluation of the status of Myotine bats in the proposed Meramec Park Lake and Union Lake Project areas, Missouri. School of Forestry, Fisheries, and Wildlife, Univ. of Mo., Columbia. 136 pp. (3,4,5,11,22)
479. LaVal, R.K., R.L. Clawson, M.L. LaVal, and W. Caire. 1976. Foraging behavior and nocturnal activity patterns of the endangered bats, Myotis grisescens and Myotis sodalis, in Missouri. Unpubl. manuscript, Mo. Dept. Conserv., Columbia. 12 pp. (4,5)
480. LaVal, R.K., R.L. Clawson, M.L. LaVal, and W. Caire. 1977. Foraging behavior and nocturnal activity patterns of Missouri bats, with emphasis on the endangered species Myotis grisescens and Myotis sodalis. J. Mammal. 58(4):592-599. (3,4,5)
481. Martin, R.L. 1973. The current status of bat protection in the United States of America. Period. Biol. 75(1):153-154. (3)
482. Mohr, C.E. 1952. Possible causes of an apparent decline in wintering populations of cave bats. Natl. Speleol. Soc. Newsletter, pp. 4-5. (3)
483. Mohr, C.E. 1972. The status of threatened species of cave bats. Bull. Nat. Speleol. Soc. 34:33-47. (3)
484. Mumford, R.E., and L.L. Calvert. 1960. Myotis sodalis evidently breeding in Indiana. J. Mammal. 41:512. (5)
485. Mumford, R.E., and J.B. Cope. 1958. Summer records of Myotis sodalis in Indiana. J. Mammal. 39: 586-587. (5)
486. Mumford, R.E., and J.B. Cope. 1964. Distribution and status of the Chiroptera of Indiana. Amer. Midl. Natur. 72:473-489. (3)
487. Myers, R.F. 1960. Lasiurus from Missouri caves. J. Mammal. 41(1):114-117. (3)
488. Myers, R.F. 1964. Ecology of three species of Myotine bats in the Ozark Plateau. Ph.D. Diss., Univ. of Mo., Columbia. 210 pp. (3,4,5)

Bats

489. Myers, R.F. 1969. Population trends of Ozark bats. Bull. Natl. Speleol. Soc. 31(2):44-45. (3)
490. Myers, R.F. 1975. Effect of seismic blasting on hibernating Myotis sodalis and other bats. Report to U.S. Army Corps of Engineers, St. Louis District. 34 pp. (3,5)
491. Smith, P.W., and P.W. Parmalee. 1954. Notes on distribution and habits of some bats from Illinois. Trans. Kansas Acad. Sci. 57:200-205. (3)
492. Thies, D.S. 1967. The parasitic mites of the gray bat (Myotis grisescens). Mo. Speleology 7:1-6. (3,4,53)
493. Tuttle, M.D. 1975. Population ecology of the gray bat (Myotis grisescens): factors influencing early growth and development. Occas. Papers Mus. Nat. Hist., Univ. Kansas 36:1-24. (4)
494. Tuttle, M.D. 1976. Rate and causes of decline in the gray bat. Paper presented at N. Amer. Symp. Bat Res., Gainesville, Florida. (4)
495. Tuttle, M.D. 1976. Population ecology of the gray bat (Myotis grisescens): factors influencing growth and survival of newly volant young. Ecology 57: 587-595. (4)
496. Tuttle, M.D. 1976. Population ecology of the gray bat (Myotis grisescens): philopatry, timing and patterns of movement, weight loss during migration, and seasonal adaptive strategies. Occas. Papers Mus. Nat. Hist., Univ. Kansas. 54:1-38. (4)
497. U.S. Fish and Wildlife Service. 1975. Endangered and threatened wildlife and plants. Proposed determination of critical habitat for Indiana bat, and Florida manatee. Federal Register 40(242): 58308-58312. (5,69)
498. U.S. Fish and Wildlife Service. 1977. Letter from Harvey Willoughby, Regional Director, to Colonel Leon E. McKinney, St. Louis District, U.S. Army Corps of Engineers. (Dated Jan. 21, 1977). (3,4,5,11,69)

Bats

499. U.S. Fish and Wildlife Service. 1977. Title 50, Chapter 1, Part 17, Subpart 1, Section 17.95: Critical habitat-fish and wildlife. Federal Register 42(184):47840. (3,5,69)
500. U.S. Fish and Wildlife Service. 1977. Letter from Harvey Willoughby, Regional Director, to Colonel Leon E. McKinney, St. Louis District, U.S. Army Corps of Engineers. (Dated March 14, 1977). (5,69)
501. Werner, J. 1974. An investigation of the current or potential habitat of the Indiana bat (Myotis sodalis) in the vicinity of the Meramec Park Lake Dam. Unpubl. report to the U.S. Army Engineer District, St. Louis, Mo. 18 pp. (5)
502. Whitaker, J.O., and R.E. Mumford. 1972. Notes on occurrence and reproduction of bats in Indiana. Proc. Indiana Acad. Sci. 81:376-383. (3)

GENERAL

503. Aley, T. 1976. Evaluation of Onondaga Cave, Crawford County, Missouri, for designation as a National Natural Landmark. Report prepared for the National Park Service, Midwest Region, Omaha, Nebraska. 25 pp. (10)
504. Anderson, E. 1949. Gravel bars evolve their own flood control. Mo. Bot. Gard. Bull. 37(2):54-57. (79)
505. Anderson, E. 1967. The landscape of the lower Meramec and its tributaries. Mo. Bot. Gard. Bull. 55:11-16. (46)
506. Anderson, E. 1965. The reptiles of Missouri. Univ. of Mo. Press, Columbia. 330 pp. (71)
507. Anonymous. 1936. Meramec River Basin. Missouri State Planning Board, Water Resources Committee. 37 pp. (46,64,65,70,73)
508. Anonymous. 1945. Report of sub-committee of Meramec Cooperative Field Committee on evaluation of recreational benefits in the Meramec Basin. 13 pp. plus exhibits. (70)
509. Anonymous. 1949. A program for the Meramec River Basin (summary report of the Meramec Cooperative Investigation Field Committee). Jointly prepared by agencies of the State of Missouri and agencies of the United States. 34 pp., 7 appendices. (26,37,46,48,70,92)
510. Anonymous. 1953. Notes (the saga of the Meramec). Mo. Bot. Gard. Bull. 41(7):131. (49)
511. Anonymous. 1967. A proposal for a national recreation area on the lower Meramec River. Jefferson County Planning and Zoning Commission. 72 pp. (70)
512. Anonymous. 1973. Disasters in water development: II. The Meramec Park Dam. Nat. Parks Conserv. Mag. 47(8): 28. (46)
513. Anonymous. 1974. Rare and endangered species of Missouri. Mo. Dept. Conserv. and U.S. Dept. of Agric., Soil Conserv. Service. (69)
514. Anonymous. 1975. National Park Service participation in Meramec River Basin planning, Missouri. National Park Service. 4 pp. (mimeo.) (64,70)

General

515. Anonymous. 1975. Species list of amphibia found at Tyson Research Center. Washington Univ., St. Louis. (mimeo.) (2,75)
516. Anonymous. 1975. Species list of reptiles found at Tyson Research Center. Washington Univ., St. Louis. (mimeo.) (71,75)
517. Anonymous. 1975. The Meramec concept. Joint study by Bureau of Outdoor Recreation, U.S. Dept. of the Interior, and Missouri Dept. of Natural Resources. 24 pp. (64,70)
518. Anonymous. 1977. A partial listing of publications involving use of Tyson Research Center. Washington Univ., St. Louis, 7 pp. (mimeo.) (8)
519. Aukley, J. 1974. Research behind the barbs at Tyson. Mo. Conservationist 35(2):1-3. (46)
520. Axtell, R.W., and N. Haskell. (in press). An interhiatal population of Pseudacris streckeri from Illinois, with an assessment of its post-glacial dispersion history. (to be published by the Chicago Academy of Sciences). (71)
521. Barr, T.C., Jr. 1958. Studies on the invertebrates of the interior lowlands and Cumberland Plateau. Ph.D. Diss., Vanderbilt Univ., Nashville, Tennessee. (53)
522. Barr, T.C., Jr., and C.H. Krekeler. 1967. Xenotrechus, a new genus of cave trechines from Missouri (Coleoptera: Carabidae). Ann. Entomol. Soc. Amer. 60:1322-1325. (11,52)
523. Bedinger, M.S., and H.H. Hobbs, Jr. 1965. Observations of a new troglobitic crayfish (with notes on the distribution of troglobitic crayfishes in the Ozark region). Bull. Nat. Speleol. Soc. 27:93-96. (11,13)
524. Bennett, R., and R.S. Campbell. 1950. Wildlife in Missouri, its resources, people, and institutions. Univ. of Mo. Associates, Columbia. (92)
525. Blanchard, F.N. 1925. A collection of amphibians and reptiles from southeastern Missouri and southern Illinois. Mich. Acad. Sci. Arts Letters Pop., 4: 533-541. (2,71)

General

526. Boyer, D.A., and A.A. Heinze. 1934. An annotated list of the amphibians and reptiles of Jefferson County, Missouri. Trans. St. Louis Acad. Sci. 28:185-201. (2,71,75)
527. Brandon, R.A. 1970. Typhlotriton spelaeus in catalog of American amphibians and reptiles (84.1). Am. Soc. Ichthy. Herp. (2)
528. Brockhoff, D. 1971. Twentieth century Walden. Washington Univ. Magazine, Summer, 1971. (a description of Tyson Research Center). (46)
529. Brunk, E.L. 1964. Forests and the Meramec Basin. Unpubl. rept., Mo. Dept. Conserv., Jefferson City. 184 pp. (38)
530. Bureau of Outdoor Recreation. (no date). Standard planning procedures to evaluate visitation, benefits and costs for small projects. Mid-continent Region, Denver, Colorado. 29 pp. (64,70)
531. Bureau of Sport Fisheries and Wildlife. 1973. Threatened wildlife of the United States. U.S. Fish Wildl. Resour. Publ. 114. (69)
532. Campbell, R.R. 1974. Flatwater recreation: the impact of federal reservoirs on rural communities. pp. 27-32 in Meramec Valley Symposium. Mo. Speleology 14(1):39 pp. (70,72,73)
533. Carpenter, J.H. 1970. Systematics and ecology of cave planarians of the United States. Ph.D. Diss., Univ. of Kentucky, Lexington. (11,53)
534. Casper, C. 1975. Chaminade Grotto. Nat. Speleol. Soc. News 33:12 pp. (10)
- 535-537. (omitted)
538. Causey, N.B. 1960. Troglobitic millipeds in Missouri. Mo. Speleology 2:60-65. (11,53)
539. Craig, J.L. 1975. A checklist of the invertebrate species recorded from Missouri subterranean habitats. Mo. Speleology 15(2):1-10. (2,3,13,26,52,53,57,61,68,75)
540. Craig, J.L. 1975. A survey of the invertebrate faunas of caves to be inundated by the Meramec Park Lake in eastern Missouri. M.S. Thesis, Central Mo. State Univ., Warrensburg. 100 pp. (8,10,11,13,22,52,53,57,75)

General

541. Craig, J.L. 1977. Invertebrate faunas of caves to be inundated by the Meramec Park Lake in eastern Missouri. Bull. Nat. Speleol. Soc. 39(3):80-89. (10,11,13,52,53,57,69,75)
542. Cravens, T.F. 1974. Introduction to the Meramec Valley Symposium. pp. 1-5 in Meramec Valley Symposium. Mo. Speleology 14(1):39 pp. (46)
543. Crawford, B.T. 1948. The beginning to the end--a story of the Meramec River. Mo. Conservationist 9(4):4-5. (46)
544. Daniel, C., and R. Lamaire. 1974. Evaluating the effects of water resource developments on wildlife habitat. Wildl. Soc. Bull. 2(3):114-118. (22,47,51)
545. Decker, W.L. 1971. Topography influences on rainfall in the Ozark Plateau. Trans. Mo. Acad. Sci. 5:69-75. (50)
546. Dowdy, W.W. 1947. An ecological study of the Arthropoda of an oak-hickory forest with reference to stratification. Ecology 28:418-439. (53)
547. Dowling, H.C. 1956. Geographic relations of Ozarkian amphibians and reptiles. Southwest Nat. 1:174-189. (2,71)
548. Dowling, H.G., ed. 1971 et seq. Catalog of American amphibians and reptiles. Catalog Committee, Society for the Study of Amphibians and Reptiles. (Published by the American Society of Ichthyologists and Herpetologists, 1963-1970.) (2,71)
549. East-West Gateway Coordinating Council. 1977. Bibliography/abstract of all East-West Gateway outputs to date. 16 pp. (See appendix 3 for further information.) (8)
550. Economic Research Associates. 1969. Analysis of tourism and recreation potential of Meramec Park Reservoir Region in Missouri. Report to Economic Development Administration, U.S. Dept. of Commerce and the Missouri State Park Board. (64,70,73)
551. Forrestal, R., D. Kuha, and J. Sugerman. 1973. Unpublished script for slide show presentation on Meramec River Basin. Ozark Chapter, Sierra Club. 22 pp. (46)

General

552. Freeman, F.R. 1971. Evaluation of Meramec Spring, Phelps County, Missouri, for eligibility for registered National Landmark designation. Report prepared for the National Park Service, Midwest Region, Omaha, Nebraska. 7 pp. (76)
553. Funk, J.L., and J.W. Robinson. 1974. Changes in the channel of the lower Missouri River and effects on fish and wildlife. Mo. Dept. Conserv. Aquatic Series no. 11. 52 pp. (24,78,92)
554. Funk, R.S. 1974. The Mississippi River as a barrier to gene dispersal in the ringneck snake, Diadophis punctatus. M.S. Thesis, Southern Illinois Univ., Edwardsville. (71)
555. Gates, D.M. 1967. Conservation and understanding. Mo. Bot. Gard. Bull. 55(5):1-5. (46)
556. Gates, F.E. 1959. Earthworms of North American caves. Bull. Nat. Speleol. Soc. 21:77-84. (11,53)
557. Glaser, E. 1966. There's life in the bird. Mo. Conservationist 27(5):4-5. (46)
558. Hall, L. 1967. Thoughts on the Meramec Basin. Mo. Bot. Gard. Bull. LV, No. 5. (46)
559. Hall, L. 1969. Stars upstream: life along an Ozark river. Univ. of Mo. Press, Columbia. (46)
560. Hathaway, L.M. 1969. Microdistribution and behavior of the collared lizard with special reference to structure. Ph.D. Diss., Washington Univ., St. Louis. 113 pp. (71)
561. Hawksley, O. 1972. Missouri Ozark waterways. Mo. Conserv. Comm., Jefferson City, Mo. 114 pp. (79,80)
562. Holsinger, J.R. 1971. A new species of the subterranean amphipod genus Allocragonyx (Gammoridae), with a redescription of the genus and remarks on its zoogeography. Internatl. Jour. Speleol. 3(3&4):317-331. (53)
563. Horner, W.W. 1936. Meramec-St. Louis Basin. National Resources Committee, Washington, D.C. 27 pp. (46)
564. Horvath, J.C. 1974. Economic survey of southeastern wildlife and wildlife-oriented recreation. Trans. N. Amer. Wildl. and Nat. Resour. Conf. 39:187-194. (70,73,92)

General

565. Hubbell, T.H. 1936. A monographic revision of the genus Ceuthophilus (Orthoptera, Gryllacrididae, Rhaphidophorina). Univ. Florida Publ. Biol., Ser. 2:1-551. (52)
566. Hubricht, L. 1950. Invertebrate fauna of Ozark caves. Nat. Speleol. Soc. Bull. 12:16-17. (11,53)
567. Hubricht, L. 1971. New Hydrobiidae from Ozark caves. Nautilus 84(3):93-96. (53)
568. Hurter, J. 1893. Catalogue of reptiles and batrachians found in the vicinity of St. Louis, Missouri. Trans. Acad. Sci. St. Louis 6:251-261. (2,71)
569. Hurter, J. 1897. A contribution to the herpetology of Missouri. Trans. Acad. Sci. St. Louis 7(19):499-503. (2,71)
570. Hurter, J. 1911. Herpetology of Missouri. Trans. Acad. Sci. St. Louis 20:59-274. (2,71)
571. Karel, J.A. 1976. A natural area survey of the southeast Missouri Regional Planning District. M.S. Thesis, Univ. of Mo., Columbia. 180 pp. (59)
572. Krusekopf, H.H. 1962. Major soil areas of Missouri. Univ. of Mo. Agric. Exp. Sta., Bull. 78, 19 pp. (74)
573. (omitted)
574. Lark, J.D. 1973. A methodological framework for regional planning in the Meramec River Basin. Resource Planning and Design Group, Meramec Basin Regional Council, Inc., Webster Groves, Mo. (64)
575. Mackin, J.G., and L. Hubricht. 1938. Records of distribution of species of isopods in central and southern United States, with descriptions of four new species of Mancasellus and Asellus (Asellota, Asellidae). Amer. Midl. Natur. 19:628-637. (53)
576. Mackin, J.G., and L. Hubricht. 1940. Descriptions of seven new species of Caecidotea (Isopoda, Asellidae) from central United States. Trans. Amer. Microscop. Soc. 59:383-397. (53)
577. Marion, K. 1970. Reproductive cycle of the fence lizard, Sceloporus undulatus, in eastern Missouri. Ph.D. Diss. Washington Univ., St. Louis. 101 pp. (71)

General

578. Massengale, R.A. 1976. The forest products industries and the Meramec River Basin. Unpubl. rept., Mo. Dept. Conserv., Jefferson City. 16 pp. (38)
579. McKinley, D. 1957. A wildlife chronology for Missouri. M.A. Thesis, Univ. of Mo., Columbia. 283 pp. (46,92)
580. McKinley, D. 1960. A chronology and bibliography of wildlife in Missouri. Univ. of Mo. Bull. 61(13). 128 pp. (8,46,92)
581. Meramec Heritage Riverway Association. 1977. Meramec Heritage Riverway report. 53 pp. (46,64)
582. Meramec Regional Planning Commission. 1973. Open space in the Meramec Region: an inventory. Rolla. 43 pp. (70)
583. Meramec Regional Planning Commission. 1975. Recreational facilities. Vol. I: Inventory-Meramec Region. Sponsored by U.S. Dept. of Housing and Urban Develop. 98 pp. (70)
584. Meramec Regional Planning Commission. 1975. Recreational facilities. Vol II: Needs-Meramec Region. Sponsored by U.S. Dept. of Housing and Urban Develop. 50 pp. (70)
585. Meramec Regional Planning Commission. 1976. Recreational facilities. Vol. III: The plan. Sponsored by U.S. Dept. of Housing and Urban Develop. 108 pp. (70)
586. Midwest Research Institute. 1966. Statistical summary of the Missouri Recreation Survey, 1966. Vols. I, II, and III. Kansas City, Missouri. (70)
587. Minton, S.A., Jr., and J.E. Minton. 1948. Notes on a herpetological collection from the middle Mississippi valley. Amer. Midl. Natur. 40(2):378-390. (2,71)
588. Missouri Botanical Garden. 1974. An introduction to the biological systems of the St. Louis area. Report to the East-West Gateway Coordinating Council. Two volumes. (8,46)
589. Missouri Conservation Commission. 1946. A plan for the development of wildlife resources in the Meramec watershed in coordination with the proposed programs of land-development and flood control. Federal Aid Wildlife Research Proj. 1-9R. 229 pp. (26,37,41,43,44,46,47,49,66,67,70,72,74,75,76,77,78,87,89,91,92,93)

General

590. Missouri Conservation Commission. 1948. A summary of studies conducted on the Meramec Basin and recommendations for the most desirable land and water program for fish and wildlife. (Federal Aid to Wildlife Investigations Summary). 7 pp. (26,46,73,92)
591. Missouri Conservation Commission. 1978. Wildlife code of Missouri. 113 pp. (30,93)
592. Missouri Department of Conservation. 1967. An introduction to bird study in Missouri. Jefferson City, Mo. 14 pp. (60)
593. Missouri Department of Conservation. 1977. Rare and endangered species of Missouri, 1977: changes in species listings and status since 1974. Jefferson City. 10 pp. (69)
594. Missouri Department of Conservation. (in press). Rare and endangered species of Missouri. Mo. Dept. of Conserv. and U.S. Dept. of Agric. Soil Conserv. Serv. (69)
595. Missouri Department of Natural Resources. 1976. Missouri State Comprehensive Outdoor Recreation Plan. Jefferson City. (36,38,70,92)
596. Missouri Division of Health. 1949. A public health program for the Meramec River Basin. Appendix 5 in A Program for the Meramec River Basin. Meramec Cooperative Investigation Field Committee. 28 pp. (48)
597. Missouri Division of Resources and Development. 1948. Recreational development of the Meramec River Basin. Appendix 3 in A Program for the Meramec River Basin, Meramec Cooperative Investigation Field Committee. 12 pp.+34 pp. appendix. (48,64,70)
598. Missouri State Planning Board. 1936. Meramec River Basin of the lower Mississippi River drainage basin. Water Resources Committee, Jefferson City, Mo. 37 pp. (46)
599. Mittleman, M.B. 1950. Cavern dwelling salamanders of the Ozark Plateau. Bull. Nat. Speleol. Soc. 12:1-14. (2)
600. Mohr, C.E. 1950. Ozark cave life. Bull. Nat. Speleological Soc. No. 12. (11)
601. Muchmore, W.B. 1976. New species of Apochthonius mainly from caves in central and eastern United States. (Psuedoscorpionida, Cthoniidae). Proc. Biol. Soc. Wash. 89(4):67-80. (11,53)

General

602. Myers, C.W. 1957. Amphibians and reptiles of Washington State Park, Washington County, Missouri. Trans. Kansas Acad. Sci. 60:288-293. (2,71,75)
603. Myers, C.W. 1958. Amphibians in Missouri caves. Herpetologica 14:35-36. (2)
604. Myers, C.W. 1959. Amphibians and reptiles of Montauk State Park and vicinity, Dent County, Missouri. Trans. Kansas Acad. Sci. 62:88-90. (2,71,75)
605. Nagel, W.O., ed. 1970. Conservation Contrasts. Mo. Dept. Conserv., Jefferson City. 453 pp. (26,38,41,42,43,44, 45,60,87,92,93)
606. National Park Service. 1969. The Meramec River Basin--a National Recreation Area study. Washington, D.C. (70)
607. Nicholas, B.G. 1960. Preliminary list of troglobites of Missouri. Mo. Speleology 2:30-37. (11,75)
608. Nicholas, B.G. 1962. Checklist of troglobitic organisms of middle America. Amer. Midl. Natur. 64:123-160. (11)
609. Nickerson, M.A., and J.A. Hutchison. 1971. The distribution of the fungus Basidiobolus ranarum Eidam in fish, amphibians, and reptiles. Amer. Midl. Natur. 86(2):500-502. (40)
610. Noell, J. 1972. Ecology of slime-inhabiting geofungi in a polluted creek. Ph.D. Diss., Washington Univ., St. Louis. 74 pp. (40)
611. Noell, J. 1973. Slime-inhabiting geofungi in a polluted stream (winter/spring). Mycologia 65(1):57-66. (40)
612. Office of Endangered Species and International Activities. 1973. Threatened wildlife of the United States. Resource Publ. 114, Bureau of Sport Fisheries and Wildlife, Washington, D.C. 289 pp. (69)
613. Peck, S.B. 1973. A systematic revision and the evolutionary biology of the Ptomophagus (Adelops) beetles of North America (Coleoptera; Leiodidae, Catopinae) with emphasis on cave inhabiting species. Bull. Mus. Comp. Zool. 145:29-162. (11,52)
614. Phillips, J. 1977. A cave, a dam, a river. Mo. Conservationist. 38(10):8-13. (46)

General

615. Poos, K.A. 1956. How to use a river. Mo. Bot. Gard. Bull. 44(6):81-87. (26,46,65,70)
616. Poos, K.A. 1967. Who is the keeper of the river? Mo. Bot. Gard. Bull. Vol. LV, No. 5. (46)
617. Reed, N.P. 1976. Changing the nature of nature (text of speech to Ozark Chapter, Sierra Club, February 21, 1976). Ozark Sierran 8(2):3. (46)
618. Richey, A.L., and K.A. Davidson. 1962. Preliminary report on forest resource potential--Meramec River Basin, Missouri. Forest Service, U.S. Dept. Agric., Milwaukee, WI. 13 pp. (38)
619. Rimbach, D. 1978. The cave biology of Missouri. Unpubl. notebook (note: see appendix 2 for author's address). (10,11)
620. Ryckman, Edgerly, Tomlinson and Associates, Inc. 1973. Environmental inventory of the Meramec River Basin. Final report prepared for Corps of Engineers, St. Louis District. Nine volumes. (46)
621. Schoolcraft, H.R. 1821. Journal of a tour into the interior of Missouri and Arkansas. Sir Richard Phillips and Co., London. (46,49)
622. Schroeder, E.E., and T.S. Baskett. 1965. Frogs and toads of Missouri. Mo. Dept. Conserv., Jefferson City. 12 pp. (2)
623. Scrivner, C.L., J.C. Baker, and B.J. Miller, 1966. Soils of Missouri. A guide to their identification and interpretation. No. C823-10/564M. Extension Division, Univ. of Mo. (74)
624. Scrivner, C.L., J.C. Baker, and H. Grogger. 1972. Evaluation of Missouri soils no. 1/74/4M. Extension Division, Univ. of Mo. (74)
625. Sherman, M.A. 1965. An ecological survey of natural areas in central Missouri. M.A. Thesis, Univ. of Mo., Columbia. 68 pp. (59)
626. Sluzalis, L.L. 1961. Timber management plan. Missouri's National Forests. 1962-1971. U.S. Forest Service, Rolla, Mo. (38)
627. Smith, P.W. 1948. Food habits of cave dwelling amphibians. Herpetologica 4:205-208. (2)

General

628. Smith, R.C. 1961. Forestry in the Meramec Basin. The Meramec Basin, Vol. 2, Chapter 3. Meramec Basin Research Project, Washington Univ., St. Louis, Mo. 63 pp. (38)
629. Soil Conservation Service. 1973. Missouri soil and water conservation needs inventory. Columbia, Mo. 196 pp. (74)
630. Soil Conservation Service. 1976. Soil survey for St. Louis County and St. Louis City, Missouri. USDA, SCS in cooperation with Mo. Univ. Agric. Exp. Sta. Two volumes. (74)
631. Steyermark, J.A. 1949. Effects of damming Ozark streams. Mo. Bot. Gard. Bull. 37(2):41-48. (22)
632. Sugerman, J.M. 1977. Statement presented on behalf of Senator John C. Danforth at the public meeting on the Meramec Park Lake Project held in Sullivan, Missouri, on March 26, 1977. (mimeo.) (22,46)
633. Sullivan, J.M. (no date). Records of common insects of the lower Meramec. (unpubl. data on file). St. Louis, Mo. (52)
634. Sullivan, J.M. 1977. Notes on phytophagous insects in and near the Missouri Ozarks. Unpubl. rept. St. Louis, Mo. (52)
635. Terpening, V.A., L.J. Hunt, D.K. Evans, S.J. Bleiweiss, and R.C. Zoanetti. 1973. A survey of the flora and fauna occurring in the Mississippi River floodplain between St. Louis, Missouri, and Cairo, Illinois. Coop. Wildl. Res. Lab., Southern Ill. Univ., Carbondale. (46)
636. U.S. Army Corps of Engineers. 1947. Three reservoirs for flood control and other purposes. Appendix 1 in A Program for the Meramec River, Meramec Cooperative Investigation Field Committee. 66 pp. (46)
637. U.S. Army Corps of Engineers. 1949. Informational brochure: multiple purpose reservoirs, Meramec Basin. St. Louis District. 12 pp.+ (46)
638. U.S. Army Corps of Engineers. 1957. Digest of preliminary information: Meramec Basin reservoirs, Missouri. St. Louis District. 11 pp. (26,37,46,65,92)

General

639. U.S. Army Corps of Engineers. 1961. Report on Meramec River Basin, Missouri, for flood control, water conservation, navigation, and other purposes: record of public hearing, 7 April 1961. 144 pp. (22,37,46)
640. U.S. Army Corps of Engineers. 1963. Report on Meramec River Basin, Missouri, for flood control, water conservation, navigation, and other purposes: record of public hearing, 18 December 1963. 169 pp. (22,37,46)
641. U.S. Army Corps of Engineers. 1964. Meramec River, Missouri: comprehensive basin study. St. Louis, Mo. (46)
642. U.S. Army Corps of Engineers. 1973. Meramec Park Lake. Upper Mississippi River Basin. Meramec River, Missouri. Final Environmental Statement. U.S. Army Engineer District, St. Louis. (22,46)
643. U.S. Army Corps of Engineers. 1975. Union Lake. Bourbeuse River, Missouri. Final Environmental Statement. U.S. Army Engineer District, St. Louis. (22,46)
644. U.S. Army Corps of Engineers. 1977. Public information brochure: Meramec Park Lake. Unpubl. rept. 4 pp. plus 12 pp. enclosure (information base for further evaluation of water resources projects. Meramec Park Lake, Meramec River, Missouri). (46)
645. U.S. Department of Agriculture. 1966. Meramec River Basin, Missouri. Joint rept. by Soil Conserv. Serv., Economic Research Serv., U.S. Forest Serv., and State of Missouri (Water Resources Board). 103 pp. (22,37,70,73,74,89)
646. U.S. Department of the Interior. 1975. Letter from Nathaniel P. Reed, Secretary of the Interior, to Hon. Martin R. Hoffman, Secretary of the Army. (dated November 6, 1975). (3,4,5,69,70)
647. U.S. Fish and Wildlife Service. 1947. A preliminary evaluation report on fish and wildlife resources in relation to the water development plan for the Cedar Hill Reservoir on the Big River, Kaskaskia-Big Muddy-Meramec Subbasin. Minneapolis. 27 pp.+ (26,28,36,41,43,44,74,87,97)

General

648. U.S. Fish and Wildlife Service. 1947. A preliminary evaluation report on fish and wildlife resources in relation to the water development plan for the Union Reservoir on the Bourbeuse River. Kaskaskia-Big Muddy-Meramec Subbasin, Minneapolis. 22 pp.+ (26,41,43,74,87,92)
649. U.S. Fish and Wildlife Service. 1948. Report on fish and wildlife resources in relation to the water development plan for the Meramec River Basin. 29 pp. (22,26,37,43,60,70,79,87,88,89)
650. U.S. Fish and Wildlife Service. 1964. Preliminary report on the water development plan for the Meramec River Basin, Missouri. (Letter from R.W. Burwell, Regional Director, to District Engineer, St. Louis District, U.S. Army Corps of Engineers; dated Jan. 28, 1964). 9 pp. (26,70,89,92)
651. U.S. Fish and Wildlife Service. 1974. United States list of endangered fauna. Washington, D.C. 22 pp. (69)
652. (omitted)
653. U.S. Fish and Wildlife Service. 1975. Letter from Harvey Willoughby, Regional Director, to Colonel Thorwald R. Peterson, St. Louis District, U.S. Army Corps of Engineers. (dated Dec. 29, 1975). (46)
654. U.S. Fish and Wildlife Service. 1975. Endangered species permit. Receipt of application for amendment. Federal Register 40(242):58324-58325. (69)
655. U.S. Fish and Wildlife Service. 1976. Meramec Park Lake, Meramec River, Missouri: a detailed report on aquatic and terrestrial resources. 37 pp. (3,4,5,10,22,26,37,38,47,57,69,70,89,91,92,93)
656. U.S. Fish and Wildlife Service. 1976. Endangered and threatened wildlife and plants. Federal Register, Part IV. 41(208):47181-47198. (69)
657. U.S. Fish and Wildlife Service. 1976. Report on effects of authorized Union Lake, Missouri, on fish and wildlife resources. (letter from H. Willoughby, Regional Director, to Colonel T.R. Peterson, St. Louis District, U.S. Army Corps of Engineers; February 27, 1976). 28 pp. (3,4,5,7,26,41,43,44,45,47,53,57,75,76,87,92)

General

658. U.S. Forest Service. 1963. Impact survey report, Meramec River Basin, Clark National Forest. Forest Service, U.S. Dept. of Agric., Milwaukee, WI. 43 pp. (38)
659. U.S. Forest Service. 1963. Multiple use survey: report on Meramec River Basin, Clark National Forest. U.S. Dept. of Agric., U.S. Forest Service, N.C. Region, Milwaukee, WI. 62 pp. (70)
660. U.S. Forest Service. 1964. Meramec River Basin, Missouri. Report on forest resource potential (preliminary report). (38)
661. U.S. Government. 1977. Executive Order 11988: floodplain management. Federal Register 42(101:26951-26957. (37,89)
662. Ullman, E.L., and D.J. Volk. 1961. An operational model for predicting reservoir attendance and benefits: implications of a location approach to water recreation. Meramec Basin Research Project, Washington Univ., St. Louis, Mo. (64,70)
663. Ulrich, E.O., and G.A. Cooper. 1938. Ozarkian and Canadian Brachiopoda. Geol. Soc. America, Special Paper no. 13. (53)
664. Vance, J.M. 1977. Something for the Cahill man. Mo. Conservationist 38(10):24-27. (46)
665. Vineyard, J.D. (no date). Master cave files for Missouri caves. (unpubl. data). Mo. Geol. Land Surv., Rolla. (10,11)
666. Washington University. 1961. Report of the Meramec Basin Research Project to the Meramec Basin Corporation, Kirkwood, Missouri. Washington Univ., St. Louis. Three volumes. (46,70)
667. Weaver, H.D. 1974. The Meramec River, a historic trail to historic caves. pp. 7-12 in Meramec Valley Symposium. Mo. Speleology 14(1):39 pp. (10,49)
668. Wiley, J.R. 1968. Guide to the amphibians of Missouri. Mo. Speleology 10(4):172 pp. (2)
669. Wiltshire, C.T., and D.H. Hazelwood. 1972. Phylloporids of Missouri. Proc. Iowa Acad. Sci. 78(3-4):70-72. (53)

General

670. Wixson, B.G., E. Bolter, J.C. Jennett, and K. Purushothaman. 1971. Environmental impact of trace metals on the new lead belt of S.E. Missouri. Paper presented at the American Geophysical Union Fall National Meeting, San Francisco, Calif. 12 pp. (55,65)
671. Wixson, B.G., ed. 1977. The Missouri lead study. Univ. of Mo., Rolla and Columbia. Two volumes. (8,15,26,53, 55,63,65)
672. Wixson, B.G., and J.C. Jennett. 1975. The new lead belt in the forested Ozarks of Missouri. Environ. Sci. Tech. 9(13):1128. (55)

RELATED STUDIES

673. Aggus, L.R. 1970. Bottom fauna development in Beaver Reservoir, northwest Arkansas, during the period of filling, 1964-1966. Dissertation Abstracts International. Vol. XXXI, No. 3. (7,72)
674. Applegate, R.L., and J.W. Mullan. 1967. Zooplankton standing crops in a new and old Ozark reservoir. Limnol. Ocean. 12(4):592-599. (63,72)
675. Applegate, R.L., and J.W. Mullan. 1967. Food of young largemouth bass, Micropterus salmoides, in a new and old reservoir. Trans. Amer. Fish. Soc. 96(1): 74-77. (25,35,72)
676. Applegate, R.L., J.W. Mullan, and D.I. Morais. 1966. Food and growth of six centrarchids from shoreline areas of Bull Shoals Reservoir. Proc. S.E. Assoc. Game Fish Comm. 20:469-482. (25,27,35,72)
677. Bacon, E.J., Jr., S.H. Newton, R.V. Kilambi, and C.E. Hoffman. 1968. Changes in the ichthyofauna in the Beaver Reservoir tailwater. Proc. S.E. Assoc. Game Fish Comm. 22:245-248. (35,72)
678. Beeman, H.W. 1924. Habits and propagation of the smallmouth black bass. Trans. Amer. Fish. Soc. 54:92-107. (26,34)
679. Bennett, G.W. 1954. Largemouth bass in Ridge Lake, Coles County, Illinois. Bull. Ill. Nat. Hist. Surv. 26(2):217-276. (26)
680. Bennett, G.W. 1962. The environmental requirements of centrarchids with special reference to largemouth bass, smallmouth bass and spotted bass. in Biol. Prob. in Water Poll. Tech. Rept. 999-WP-25.- Trans. of 1962 Seminar. Robert A. Taft Sanitary Engin. Center, U.S. Public Health Services, pp. 156-190. (26)
681. Breder, C.M., Jr. 1936. The reproductive habits of the North American sunfishes (Family Centrarchidae). Zoologica 21:1-48. (34)
682. Briggs, J.C. 1948. The quantitative effects of a dam upon the bottom fauna of a small California stream. Trans. Amer. Fish. Soc. 78:70-81. (7,51)
683. Brown, J.D. 1967. A study of the fishes of the tailwaters of three impoundments in northern Arkansas. M.S. Thesis, Univ. of Arkansas. 45 pp. (35,72)

Related studies

684. Burress, R.M. 1962. A quantitative creel census of two arms of Bull Shoals Reservoir, Missouri. Proc. S.E. Assoc. Game Fish Comm. 16:387-398. (28,35,72)
685. Charles, J.R. 1957. Final report on population manipulation studies in three Kentucky streams. Proc. S.E. Assoc. Game Fish Comm. 11:155-185. (32)
686. Cleary, R.E. 1956. Observations on factors affecting smallmouth bass production in Iowa. J. Wildl. Manage. 20(4):353-359. (34)
687. Cowell, B.C., and P.L. Hudson. 1967. Some environmental factors influencing benthic invertebrates in two Missouri River reservoirs. pp. 541-555 in Reservoir Fishery Resources Symposium, Amer. Fish. Soc., Southern Division. (7)
688. Cushing, C.E. 1963. Filter-feeding insects distribution and planktonic food in the Montreal River. Trans. Amer. Fish. Soc. 92:216-219. (52,63)
689. Durham, L. 1955. Ecological factors affecting the growth of smallmouth bass and longear sunfish in Jordan Creek. Trans. Ill. Acad. Sci. 47:25-35. (27)
690. Erman, D.C. 1973. Upstream changes in fish populations following impoundment of Sagehen Creek, California. Trans. Amer. Fish. Soc. 102:626-629. (32,51)
691. Fajen, O.F. 1975. The fish population of Big Buffalo Creek as affected by stream improvements. Mo. Dept. Conserv. D-J Proj. F-1-R-22, Study S-13, Job no. 2. Prog. rept. 8 pp. (1964) (24,32,78)
692. Fajen, O.F. 1977. An evaluation of the United States Soil Conservation Service Fourche Creek Watershed Project. Mo. Dept. Conserv. D-J Proj. F-1-R-26, Study S-19. Prog. rept. 2 pp. (78,89)
693. Fajen, O.F. 1977. Stabilizing and improving Ozark streams. Mo. Dept. Conserv. D-J Proj. F-1-R-26, Study S-13, Job nos. 1 and 2. Prog. rept. 3 pp. (24,78)
694. Fleener, G.G. 1969. A quantitative creel census on the Big Piney River. Mo. Dept. Conserv. D-J Proj. F-1-R-18, Work plan 3, Job no. 1. Prog. rept. 13 pp. (1963) (28)

Related studies

695. Fleener, G.G. 1969. A quantitative creel census of the Current River. Mo. Dept. Conserv. D-J Proj. F-1-R-18, Work plan 9, Job no. 1. Prog. rept. 10 pp. (1958) (28)
696. Fleener, G.G. 1973. Harvest of fish from the Current River. Mo. Dept. Conserv. D-J Proj. F-1-R-21, Study S-10, Job no. 1. Final rept. 16 pp. (1970) (28)
697. Fleener, G.G. 1974. A study of gigging in the Big Piney River. Mo. Dept. Conserv. D-J Proj. F-1-R-22, Study S-3, Job no. 1. Final rept. 8 pp. (1971) (28)
698. Fleener, G.G. 1974. Harvest of fish from the Big Piney River. Mo. Dept. Conserv. D-J Proj. F-1-R-22, Study S-2, Job no. 1. Final rept. 10 pp. (1970) (28)
699. Fleener, G.G. 1977. Recreational use of Gasconade River. Mo. Dept. Conserv. D-J Proj. F-1-R-26, Study S-21, Job no. 1. Prog. rept. 4 pp. (70)
700. Fry, J.P. 1962. Harvest of fish from tailwaters of three large impoundments in Missouri. Proc. S.E. Assoc. Game Fish Comm. 16:405-411. (28,35,72)
701. Funk, J.L., E.M. Lowry, M.H. Patriarche, R.G. Martin, R.S. Campbell, and T.R. O'Connell, Jr. 1953. The Black River Studies. Univ. of Mo. Stud., Vol. XXVI(2). 136 pp. (7,26,51)
702. (omitted)
703. Gasaway, C.R. 1967. The sport fishery of Tenkiller Ferry Reservoir, Oklahoma. Okla. Fish. Res. Lab. Bull. 7. 21 pp. (28,35,72)
704. Gasaway, C.R. 1970. Changes in the fish population in Lake Francis Case in South Dakota in the first 16 years of impoundment. Bur. Sport Fish. Wildl. Tech. Paper 56. 30 pp. (32,35,51,72)
705. Hall, E.E., and W.C. Latta. 1952. Pre- and post-impoundment fish populations in the stilling basin below Wister Dam. Proc. Okla. Acad. Sci. 32:1-6. (32,35,51,72)

Related studies

706. Hall, G.E. 1955. Preliminary observations on the presence of stream inhabiting fishes of Tenkiller Reservoir, a new Oklahoma impoundment. Proc. Okla. Acad. Sci. 34:34-40. (35,72)
707. Hanson, W.D. 1962. Dynamics of the largemouth bass population in Bull Shoals Reservoir, Missouri. Proc. S.E. Assoc. Game Fish Comm. 16:398-404. (32,35,72)
708. Hodson, R.G., and K. Strawn. 1968. Food of young-of-the-year largemouth and spotted bass during the filling of Beaver Reservoir, Arkansas. Proc. S.E. Assoc. Game Fish Comm. 22:510-515. (25,35,72)
709. Hudson, P.L., and B.C. Cowell. 1966. Distribution and abundance of phytoplankton and rotifers in a main stem Missouri River reservoir. Proc. South Dakota Acad. Sci. 45:84-106. (63,72)
710. Hynes, H.B.N. 1970. The ecology of running waters. Univ. of Toronto Press. 555 pp. (79)
711. Isom, B.G. 1971. Effects of storage and mainstream reservoirs on benthic macroinvertebrates in Tennessee Valley. pp. 179-191 in G.E. Hall, ed. Reservoir Fisheries and Limnology. Amer. Fish. Soc. Spec. Publ. No. 8. (7,51,53)
712. Jenkins, R.M. 1953. A pre-impoundment survey of Fort Gibson Reservoir, Oklahoma. Okla. Fish. Res. Lab. Rept. No. 29. 53 pp. (26,51)
713. Jenkins, R.M. 1955. Growth rates of six sunfishes in Oklahoma. Okla. Fish. Res. Lab. Rept. 49:1-73. (27)
714. Jenkins, R.M., and D.I. Moreis. 1968. Effects of thirteen environmental variables on fish standing crop in reservoirs. Proc. W. Assoc. Game Fish Comm. 48:488-497. (33)
715. Jenkins, R.M., E.M. Leonard, and G.E. Hall. 1952. An investigation of the fisheries resources of the Illinois River and pre-impoundment study of Tenkiller Reservoir, Oklahoma. Okla. Fish. Res. Lab. Rept. 26. 136 pp. (35,72)

Related studies

716. Kathrein, J.W. 1953. An intensive creel census of Clearwater Lake, Missouri, during its first four years of impoundment, 1949-1952. Trans. N. Amer. Wildl. Conf. 18:282-295. (28,35)
717. Keith, W.L. 1964. A pre-impoundment study of the fishes, their distribution and abundance in the Beaver Lake drainage of Arkansas. M.S. Thesis, Univ. of Arkansas. 94 pp. (23,26,51)
718. Knapp, L.W. 1958. A distributional study of the fishes of the Upper White River, Missouri. M.S. Thesis, Univ. of Mo., Columbia. 124 pp. (23)
719. Kramer, R.H., and L.L. Smith, Jr. 1962. Formation of year classes in largemouth bass. Trans. Amer. Fish. Soc. 91(1):29-41. (34)
720. Lane, C.E., Jr. 1953. Age and growth of bluegill, Lepomis macrochirus macrochirus (Rafinesque), in a new Missouri impoundment. M.A. Thesis, Univ. of Mo., Columbia. 35 pp. (27,35)
721. Larimore, R.W., and P.W. Smith. 1963. The fishes of Champaign County, Illinois, as affected by 60 years of stream changes. Ill. Nat. Hist. Surv. Bull. 28(2). 382 pp. (24,32)
722. Latta, W.C. 1963. The life history of the smallmouth bass, Micropterus dolomieu dolomieu, at Waugoshanec Point, Lake Michigan. Bull. Inst. Fish. Res. 5. 56 pp. (29,35,72)
723. Lufertova, L.A. 1968. Formation of the 200 zooplankton in the Gorki Reservoirs. U.S. Dept. of Commerce, Springfield, Va. (63,72)
724. McGary, J.L., and G.L. Harp. 1971. The benthic macroinvertebrate community of the Greer's Ferry Reservoir cold tailwater, Little Red River, Arkansas. Arkansas State Univ. (mimeo.) (7,53,72)
725. Moser, B.B., and D. Hicks. 1970. Fish population of the stilling basin below Canton Reservoir. Proc. Okla. Acad. Sci. 50:69-74. (72)

Related studies

726. Mullan, J.W., and R.L. Applegate. 1967. Centrarchid food habits in a new and old reservoir during and following bass spawning. Proc. S.E. Assoc. Game Fish Comm. 21:332-342. (25,34,35,72)
727. Mullan, J.W., and R.L. Applegate. 1970. Food habits of five centrarchids during filling of Beaver Reservoir, 1965-1966. Bureau of Sport Fisheries and Wildlife Tech. Paper 50. 16 pp. (25)
728. Munther, G.L. 1970. Movement and distribution of smallmouth bass in the Middle Snake River. Trans. Amer. Fish. Soc. 99(1):44-53. (23,31)
729. Nichols, H.M. 1953. The age and growth of the largemouth bass, Micropterus salmoides (Lacepede), in a new flood control reservoir in Missouri. M.A. Thesis, Univ. of Mo., Columbia. 51 pp. (27,35)
730. O'Connell, T.R., Jr. 1951. The bottom fauna of Black River and Clearwater Reservoir, Missouri. M.A. Thesis, Univ. of Mo., Columbia. 122 pp. (7,72)
731. O'Connell, T.R., and R.S. Campbell. 1953. The benthos of the Black River and Clearwater Lake, Missouri. Univ. of Mo. Studies 26(2):25-41. (7,72)
732. Patriarche, M.H., and R.S. Campbell. 1958. The development of the fish population in a new flood-control reservoir in Missouri, 1948-1954. Trans. Amer. Fish. Soc. 87:240-258. (32,35,72)
733. Pfitzer, D.W. 1967. Evaluation of tailwater fishery resources resulting from high dams. pp. 477-488 in Reservoir Fishery Resources Symposium, Southern Div., Amer. Fish. Soc. (28,35,72)
734. Pflieger, W.L. 1974. Reproductive success of fishes in Big Piney River. Mo. Dept. Conserv. D-J Proj. F-1-R-22, Study S-2, Job no. 3. Final rept. 17 pp. (1958) (34)
735. Redmon, W.L. 1969. The effects of scouring on benthos populations. Mo. Dept. Conserv. D-J Proj. F-1-R-18, Work plan 20, Job no. 6. Prog. rept. 6 pp. (7)

Related studies

736. Rodhe, W. 1964. Effect of impoundment on water chemistry and plankton in Lake Ransaren (Swedish Lapland). Verh. Intern. Ver. Limnol. 15:437-443. (63,72)
737. Ruhr, C.E. 1957. Effect of stream impoundment in Tennessee on the fish populations of tributary streams. Trans. Amer. Fish. Soc. 86:144-157. (32,57)
738. Russell, T.R. 1968. The fish population of Current River. Mo. Dept. Conserv. D-J Proj. F-1-R-17, Work plan 9, Job no. 2. Prog. rept. 12 pp. (1961) (32)
739. Russell, T.R. 1974. The fish population in Big Piney River. Mo. Dept. Conserv. D-J Proj. F-1-R-22, Study S-2, Job no. 2. Final rept. 24 pp. (1957) (32)
740. Ryck, F.M. 1975. The effects of scouring floods on the benthos of Big Buffalo Creek, Missouri. Mo. Dept. Conserv. D-J Proj. S-1-R-18, Work plan 20, Job no. 6. Final rept. 18 pp.+ (7)
741. Ryck, F.M. 1976. Water quality of the Big Piney River. Mo. Dept. Conserv. D-J Proj. F-19-R-2, Study W-4, Job no. 1. Prog. rept. 36 pp. (1974) (88)
742. Schneidermeyer, F., and W.M. Lewis. 1956. Utilization of gizzard shad by largemouth bass. Prog. Fish-Cult. 18:137-138. (25)
743. Siefert, R.E. 1968. Reproductive behavior, incubation and mortality of eggs, and postlarval food selection in the white crappie. Trans. Amer. Fish. Soc. 97(3):252-259. (26,34)
744. Siefert, R.E. 1969. Biology of the white crappie in Lewis and Clark Lake. Bureau Sport Fisheries and Wildlife Tech. Paper. (26)
745. Spence, J.A., and H.B.N. Hynes. 1971. Differences in benthos upstream and downstream of an impoundment. J. Fish. Res. Board Canada 28(1):35-43. (7,51)

Related studies

746. Spence, J.A., and H.B.N. Hynes. 1971. Differences in fish populations upstream and downstream of a mainstream impoundment. J. Fish. Res. Board Canada 28:45-46. (32,35,51,72)
747. Summers, P.B. 1954. Some observations of limnology and fish distribution in the Illinois River below Tenkiller Reservoir. Proc. Okla. Acad. Sci. 35:15-20. (23,35,72,88)
748. Tennessee Valley Authority. 1965. Fish inventory data-Pickwick Reservoir. T.V.A. Fish and Wildlife Brochure. 10 pp. (26)
749. Thompson, W.H., H.C. Ward, and J.F. McArthur. 1949. The age and growth of white crappie Pomoxis annularis from four small Oklahoma lakes. Proc. Okla. Acad. Sci. 1949:93-101. (27)
750. Trautman, M.B. 1932. The practical value of scientific data in a stocking policy for Ohio. Trans. Amer. Fish. Soc. 62:258-260. (30)
751. Webster, D.A. 1954. Smallmouth bass, Micropterus dolomieu, in Cayuga Lake, Part I. Life history and environment. Cornell Univ. Agric. Exp. Sta. Memo 327. 39 pp. (32,51)
752. Wood, R.K., and D.E. Whelan. 1962. Low-flow regulation as a means of improving stream fishing. Proc. S.E. Assoc. Game Fish Comm. 16:375-386. (24)

ADDENDUM

753. Audubon Society of Missouri. 1934 et seq. The bluebird. (This journal frequently contains articles dealing with birds in east-central Missouri and the Meramec River Basin.) (60)
754. Baldwin, R.N. 1911. Notes on rare species in eastern Missouri. Auk 28:490-492. (60)
755. Missouri Division of Health. 1978. Reported vector borne and environmental diseases in counties in the Meramec River Basin. (unpubl. data contained in letter from Dr. William F. Raithel, Director, Bureau of Veterinary Public Health, to D.E. Simpson; dated Feb. 3, 1978) (48)

Appendix 1. Subjects and their references.

1. Algae

1 18 19 21 22 57 73 76 89 126

2. Amphibians

6 7 24 54 71 72 90 95 96 98 110 131 132 133
134 135 150 151 152 515 525 526 527 539 547 548 568 569
570 587 599 602 603 604 622 627 668

3. Bats (general)

401 446 447 448 449 454 455 460 462 466 468 472 475 476
477 478 480 481 482 483 486 487 488 489 490 491 492 498
499 502 539 646 655 657

4. Bats-gray

401 446 447 448 449 460 461 471 478 479 480 488 492 493
494 495 496 498 646 655 657

5. Bats-Indiana

204 401 446 447 448 449 450 451 452 453 456 457 458 459
460 463 464 465 467 469 470 472 473 474 478 479 480 484
485 488 490 497 498 499 500 501 646 655 657

6. Beaver

240 349 351 375 401

7. Benthos

18 19 74 75 89 123 124 126 130 657 673 682 687 701
711 724 730 731 735 740 745

8. Bibliographies

192 518 540 549 580 588 671

9. Bobcat

288 293 382 387 401

10. Caves

449 503 534 540 541 619 655 665 667

Appendix 1. Continued.

11. Cave biology

62 170 460 478 498 522 523 533 538 540 541 556 566 600
601 607 608 613 619 665

12. Coyote

269 288 292 293 382 387 401

13. Crayfish

61 62 89 110 137 149 523 539 540 541

14. Deer-food habits

205 209 218 228 239 250 253 286 296 303 318 321 342 347
409 425 426 428

15. Deer-general

192 196 200 204 245 248 256 328 333 355 361 401 429 436
437 671

16. Deer-harvest

208 210 256 330 332 334 336 338 346 354 356 358 427

17. Deer-habitat and management

250 251 296 339 358 429 445

18. Deer-population studies

208 211 247 332 335 340 341 355 357 359

19. Deer-productivity

209 211 252 332 335

20. Deer-reproduction

209 252

21. Doves

195 199 271 274 275 289 291 294 369 371 373 424 441

22. Environmental impact

81 82 84 204 478 540 544 631 632 639 640 642 643 645
649 655

Appendix 1. Continued.

23. Fish-distribution

108 109 112 122 136 717 718 728 747

24. Fish-effects of stream alteration and pollution

26 73 89 118 128 143 152 553 691 693 721 752

25. Fish-food habits

12 79 92 675 676 708 726 727 742

26. Fish-general

8 11 13 32 44 47 52 64 66 69 80 89 91 106
 107 109 110 112 122 138 139 509 539 589 590 605 615 638
 647 648 649 650 655 657 671 678 679 680 701 712 717 743
 744 748

27. Fish-growth

4 25 78 94 115 116 676 689 713 720 729 749

28. Fish-harvest and catch

3 8 29 31 33 34 35 36 37 48 49 51 53 91
 97 647 684 694 695 696 697 698 700 703 716 733

29. Fish-life history

10 14 93 112 722

30. Fish-management

29 31 46 63 97 140 141 591 750

31. Fish-movement

25 41 43 728

32. Fish-population studies

3 16 42 44 45 53 58 63 77 81 82 100 101 102
 103 104 122 685 690 691 704 705 707 721 732 737 738 739
 746 751

33. Fish-productivity

27 28 30 714

Appendix 1. Continued.

34. Fish-reproduction

105 106 111 113 678 681 686 719 726 734 743

35. Fish-reservoirs675 676 677 683 684 700 703 704 705 706 707 708 715 716
720 722 726 729 732 733 746 74736. Fishing pressure

5 40 60 97 595 647

37. Flood control

268 509 589 638 639 640 645 649 655 661

38. Forest resources

200 324 342 437 529 578 595 605 618 626 628 655 658 660

39. Fox

264 288 293 295 375 401

40. Fungi

609 610 611

41. Furbearers (general)

203 228 241 305 326 350 375 401 433 589 605 647 648 657

42. Furbearer harvest

350 383 385 388 391 431 605

43. Game animals (general)194 203 365 266 285 305 326 353 401 402 404 589 605 647
648 649 65744. Game birds (general)202 216 217 248 265 266 297 326 399 400 407 421 589 605
647 65745. Game harvest197 220 221 225 227 231 235 326 366 376 377 378 384 386
387 390 391 417 605 657

Appendix 1. Continued.

46. General

265 434 505 507 509 512 519 528 542 543 551 555 557 558
 559 563 579 580 581 588 589 590 598 614 615 616 617 620
 621 632 635 636 637 638 639 640 641 642 643 644 653 664
 666

47. Habitat evaluation

251 255 266 339 342 395 418 544 589 655 657

48. Health

70 88 509 596 597 755

49. History

13 69 80 256 510 589 621 667

50. Hydrology

89 545

51. Impoundment-effects on stream biota

157 175 544 682 690 701 704 705 711 712 717 745 746 751

52. Insects

110 353 522 539 540 541 565 613 633 634 688

53. Invertebrates (general)

3 18 19 38 65 67 68 73 86 89 110 126 492 521
 533 538 539 540 541 546 556 562 566 567 575 576 601 657
 663 669 671 711 724

54. Miscellaneous

(none)

55. Mining

2 15 20 23 39 55 56 59 73 89 119 126 129 142
 147 152 153 385 670 671 672

56. Mink

290 374 379 385 389 401 432

Appendix 1. Continued.

57. Molluscs

89 156 157 158 159 160 161 162 163 164 165 166 167 168
 169 170 171 172 173 174 175 176 177 178 179 180 181 182
 183 184 185 186 187 188 189 190 539 540 541 655 657 737

58. Muskrat

374 380 389 401 403 405 406

59. Natural areas

571 625

60. Non-game birds

191 193 202 230 237 254 265 266 267 276 281 407 419 437
 438 439 592 605 649 753 754

61. Non-game mammals

212 213 262 263 265 266 270 353 401 402 539

62. Opossum

241 362 363 375 401

63. Plankton

671 674 688 709 723 736

64. Planning

87 327 507 514 517 530 550 574 581 597 662

65. Pollution

2 49 55 56 70 73 74 85 87 88 89 117 118 120
 121 124 125 126 127 128 142 143 144 147 148 152 154 507
 615 638 670 671

66. Quail

228 282 283 284 291 344 348 395 411 412 413 415 416 417
 418 589

67. Rabbit

234 259 260 261 272 273 299 302 304 320 322 323 364 365
 366 368 370 372 396 397 398 401 410 422 423 440 442 443
 444 589

Appendix 1. Continued.

68. Raccoon

228 241 244 352 374 381 385 389 392 393 394 401 432 539

69. Rare and endangered species172 497 498 499 500 513 531 541 593 594 612 646 651 654
655 65670. Recreation507 508 509 511 514 517 530 532 550 564 582 583 584 585
586 589 595 597 606 615 645 646 649 650 655 659 662 666
69971. Reptiles506 516 520 525 526 547 548 554 560 568 569 570 577 587
602 60472. Reservoirs (biota)157 532 589 673 674 675 676 677 683 684 700 703 704 705
706 707 708 709 715 722 723 724 725 726 730 731 732 733
736 746 74773. Socio-economic

220 350 376 377 378 404 507 532 550 564 590 645

74. Soils232 248 326 345 350 444 572 589 623 624 629 630 645 647
64875. Species lists3 8 13 42 45 58 63 69 80 81 82 100 102 103
104 110 122 124 138 193 194 202 254 281 438 439 515 516
526 539 540 541 589 602 604 607 65776. Springs (general)

9 22 99 145 146 552 589 657

77. Squirrel

220 221 222 225 227 228 241 277 279 401 408 420 437 589

Appendix 1. Continued.

78. Stream-alteration or improvement

553 589 691 692 693

79. Stream-general

8 52 504 561 649 710

80. Stream-resources

5 49 50 84 114 326 561

81. Turkey-food habits

228 243 298 300 301 342

82. Turkey-general

201 204 206 242 248 257 258 306 309 315 437

83. Turkey-harvest

308 313 317 329

84. Turkey-habitat and management

242 246 249 278 310 311 314 316

85. Turkey-population studies

198 229 233 307 312 313 315 316 319 367

86. Turkey-productivity

315

87. Waterfowl

197 207 228 231 287 325 326 589 605 647 648 649 657

88. Water quality and limnology15 17 18 19 20 23 39 70 73 74 83 85 87 89
99 119 125 126 129 135 144 153 154 649 741 74789. Watershed and land management

325 326 418 437 589 645 649 650 655 661 692

Appendix 1. Continued.

90. Wilderness

(none)

91. Wildlife-food production

205 207 209 215 218 219 223 224 226 228 236 239 248 253
280 291 318 321 326 342 343 345 347 360 414 415 418 437
589 655

92. Wildlife-general

214 232 255 265 266 268 285 326 327 331 337 509 524 553
564 579 580 589 590 595 605 638 648 650 655 657

93. Wildlife-management

200 222 225 238 248 318 321 326 327 331 434 435 437 589
591 605 655

94. Woodchuck

430

Appendix 2. Names and addresses of individuals contacted during the literature survey. The special interest of each is indicated in parentheses below his or her address.

Thomas Aley, Director
Ozark Underground Laboratory
Protem, MO 65733
(Caves and cave biology)

Michael J. Armbruster
Mo. Coop. Wildlife Res. Unit
112 Stephens Hall
Univ. of Missouri
Columbia, MO 65201
(Doves)

Dr. Ralph W. Axtell
Dept. of Biological Sciences
Southern Illinois Univ.
Edwardsville, IL 62025
(Amphibians)

Joseph P. Bachant
Missouri Dept. of Conservation
P.O. Box 180
Jefferson City, MO 65101
(General)

Dr. Thomas S. Baskett, Leader
Mo. Coop. Wildlife Res. Unit
112 Stephens Hall
Univ. of Missouri
Columbia, MO 65201
(General)

Dr. David Bedan, President
Coalition for the Environment
6267 Delmar
University City, MO 63130
(General)

Douglas J. Berlin, Asst. Director
Meramec Regional Planning Comm.
101 West 10th Street
Rolla, MO 65401
(Recreation)

John T. Brady
St. Louis District
U.S. Army Corps of Engineers
210 N. 12th Street
St. Louis, MO 63101
(General)

Dr. Ronald Brandon
Dept. of Zoology
Life Science 2, Rm. 351
Southern Illinois Univ.
Carbondale, IL 62901
(Cave biology)

Alan Buchanan
Missouri Dept. of Conservation
1110 College Ave.
Columbia, MO 65201
(Naiades)

Richard L. Clawson
Missouri Dept. of Conservation
1110 College Ave.
Columbia, MO 65201
(Non-game animals)

Dr. Richard W. Coles, Director
Tyson Research Center
Washington University
P.O. Box 258
Eureka, MO 63025
(General)

Lieutenant John L. Craig
34 Williams
Ft. Leonard Wood, MO 65473
(Invertebrates)

Thomas Cravens
Meramec Community College
11333 Big Bend
Kirkwood, MO 63122
(Caves)

Appendix 2. Continued.

Bill T. Crawford
Wildlife Research Supervisor
Missouri Dept. of Conservation
1110 College Avenue
Columbia, MO 65201
(Wildlife)

Stan Dahlke
Montana Coop. Wildlife Res. Unit
Univ. of Montana
Missoula, MT 59801
(Non-game birds)

Bill W. Dean
National Park Service
Midwest Region
1709 Jackson Street
Omaha, NE 68102
(Recreation)

Joe G. Dillard
Fishery Research Supervisor
Missouri Dept. of Conservation
1110 College Avenue
Columbia, MO 65201
(Fisheries)

Dr. David Easterla
Dept. of Biology
Northwest Missouri State Univ.
Garrett-Strong Rm. 211
Maryville, MO 64468
(Birds and mammals)

David Erickson
Missouri Dept. of Conservation
1110 College Avenue
Columbia, MO 65201
(Furbearers)

George Fleener
Missouri Dept. of Conservation
1110 College Avenue
Columbia, MO 65201
(Fisheries)

James Czarnecki
Missouri Dept. of Conservation
1110 College Avenue
Columbia, MO 65201
(Water quality)

Richard H. Daley
Ecological Services Dept.
Missouri Botanical Garden
2345 Tower Grove Avenue
St. Louis, MO 63110
(General)

Edgar Denison
544 E. Adams
Kirkwood, MO 63122
(General)

Richard M. Duchrow
Missouri Dept. of Conservation
1110 College Avenue
Columbia, MO 65201
(Water quality)

Doug Edwards
Laboratory Services Program
Division of Environmental Quality
Missouri Dept. of Natural Resources
P.O. Box 1368
Jefferson City, MO 65101
(Water quality)

Richard Fendlason
505 Antioch Lane
Ballwin, MO 63011
(Fisheries)

Dr. Glenn A. Gillespie
Dept. of Recreation and Park Administration
Clark Hall
Univ. of Missouri
Columbia, MO 65201
(Recreation)

Appendix 2. Continued.

David Goudy, Chairman
Meramec River Recreation Association
St. Louis County Dept. of Parks and
Recreation
7900 Forsyth Boulevard
Clayton, MO 63105
(General)

Dr. Oscar Hawksley
Dept. of Biology
Central Missouri State Univ.
Warrensburg, MO 64093
(Cave biology)

Dr. Stephen R. Humphrey
Assoc. Curator in Mammalogy
Florida State Museum
Univ. of Florida
Gainesville, FL 32611
(Indiana bat)

James Jackson, Former President
The Audubon Society of Missouri
105 Terry Lane
Washington, MO 63090
(Non-game birds)

Mac Johnson, Managing Editor
Missouri Conservationist
Missouri Dept. of Conservation
P.O. Box 180
Jefferson City, MO 65101
(General)

Roger Kirkman
U.S. Forest Service
P.O. Box 937
Rolla, MO 65401
(Forest resources and wildlife
management)

Marsh Lefler
U.S. Forest Service
P.O. Box 937
Rolla, MO 65401
(Recreation and forest resources)

Willis D. Hanson
Missouri Dept. of
1110 College Avenue
Columbia, MO 65201
(Fisheries)

Jack W. Hoey
Central Fishery M
Missouri Dept. of
818 Crestmere Court
Jefferson City, MO 65101
(Fisheries)

Dr. James Hunt
Dept. of Biology
403 Stadler Hall
Univ. of Missouri
8001 Natural Bridge
St. Louis, MO 63105
(Insects)

Frank Janson
St. Louis Metro
1000 Hampton Avenue
St. Louis, MO 63104
(Water quality)

John Karel, Director
Natural History
Division of Parks and Recreation
Missouri Dept.
P.O. Box 176
Jefferson City
(Wilderness)

Dr. Richard K. Borchert
Missouri Dept.
2816 Mexico Street
Columbia, MO 65201
(Bats)

John B. Lewis
Missouri Dept.
1110 College Avenue
Columbia, MO 65201
(Turkey)

Appendix 2. Continued.

Harrison F. Lyman
Missouri Chapter
The Nature Conservancy
1475 Whispering Pines
St. Louis, MO 63141
(General)

Dr. Dean Metter
Dept. of Biological Sciences
Stewart Hall
Univ. of Missouri
Columbia, MO 65201
(Amphibians and reptiles)

William R. Michels
Outdoor Recreation Planner
Bureau of Outdoor Recreation
Mid-Continent Region
P.O. Box 25387
Denver Federal Center
Denver, CO 80225
(Recreation)

Dr. Orin Mock
1215 South Florence
Kirksville, MO 63501
(Insectivores)

Dr. Max A. Nickerson, Head
Vertebrate Division
Milwaukee Public Museum
800 West Wells Street
Milwaukee, WI 53233
(Amphibians and reptiles)

Kenneth R. Perry
East Central Fishery Mgmt. District
Missouri Dept. of Conservation
Route 1, Box 250
Gerald, MO 63037
(Fisheries)

Sally Phillips, Editor
Webster Groves Nature Study Society
658 North Harrison
St. Louis, MO 63122
(General)

Duane Marquart
Dept. of Biology
Central Mo. State Univ.
Warrensburg, MO 64093
(Cave biology)

Stanley M. Michaelson
Missouri Dept. of Conservation
P.O. Box 180
Jefferson City, MO 65101
(Fisheries)

Paul A. Mills, Jr.
Museum of Natural History
Univ. of Kansas
Lawrence, KS 66045
(Fisheries)

Dr. Richard Myers
National Weather Service Technical
Training Center
617 Hardesty
Kansas City, MO 64124
(Bats)

Ronald Oesch
#9 Hill Drive
Glendale, MO 63122
(Naiades)

Dr. William L. Pflieger
Missouri Dept. of Conservation
1110 College Avenue
Columbia, MO 65201
(Fisheries)

Roger Pryor, Director
Missouri Natural Area Survey
6267 Delmar
University City, MO 63130
(Natural areas)

Appendix 2. Continued.

Dr. William Raithel, Director
Bureau of Veterinary Public Health
Missouri Division of Health
P.O. Box 570
Jefferson City, MO 65101
(Public health)

Don Rimbach
6938 Oleatha
St. Louis, MO 63139
(Caves and cave biology)

Everett F. Robinson-Wilson
Missouri Dept. of Conservation
1110 College Avenue
Columbia, MO 65201
(Water quality)

Hank Schneider, Naturalist
Meramec Park Lake Visitors Center
U.S. Army Corps of Engineers
Sullivan, MO 63080
(General)

Dr. Owen Sexton
Dept. of Biology
Washington University
St. Louis, MO 63130
(Amphibians and reptiles)

Wayne Shuyler
Division of Parks and Recreation
Missouri Dept. of Natural Resources
P.O. Box 176
Jefferson City, MO 65101
(Recreation)

Steve Sisk
U.S. Environmental Protection Lab.
25 Funston Road
Kansas City, KS 66115
(Water quality)

Dr. James N. Speakman, Senior Associate
Ryckman, Edgerly, Tomlinson, and Associates
12161 Lackland Road
St. Louis, MO 63141
(Water quality)

J. Edward Sporn, Project Director
Water Quality Study
East-West Gateway Coordinating
Council
112 North 4th Street
St. Louis, MO 63102
(Water quality)

Father James Sullivan
St. Jerome Parish Rectory
10235 Ashbrook Drive
St. Louis, MO 63137
(Insects, vegetation)

Dr. Jamie Thomerson
Dept. of Biological Sciences
Southern Illinois Univ.
Box 65
Edwardsville, IL 62026
(Fisheries)

Oliver Torgerson
Missouri Dept. of Conservation
1110 College Avenue
Columbia, MO 65201
(Deer)

Spencer E. Turner
Missouri Dept. of Conservation
1110 College Avenue
Columbia, MO 65201
(Fisheries)

Jerry Vineyard, Chief
Information Section
Geologic and Land Survey
Missouri Dept. of Natural Resources
Box 250
Rolla, MO 65401
(Caves)

Appendix 2. Continued.

Joe Werner
Longview Community College
500 Longview Road
Lee's Summit, MO 64063
(Bats)

Joe Williamson
U.S. Fish and Wildlife Service
Suite 106
Rockcreek Office Building
2701 Rockcreek Parkway
North Kansas City, MO 64116
(Fish and wildlife)

Ronald W. Woodland
District Forester
Meramec Fire Protection District
Missouri Dept. of Conservation
Box 248
Sullivan, MO 63080
(Forest resources)

Dr. James R. Whitley
Water Quality Res. Supervisor
Missouri Dept. of Conservation
1110 College Avenue
Columbia, MO 65201
(Water quality)

Dr. Bobby G. Wixson
Dept. of Civil Engineering
Room 115, Engineering Res. Lab.
University of Missouri-Rolla
Rolla, MO 65401
(General)

Wink Zachritz
Dept. of Civil Engineering
Engineering Research Lab.
University of Missouri-Rolla
Rolla, MO 65401
(Endangered species, aquatic life)

Appendix 3. Summary of current research relevant to the aquatic and wildlife resources of the Meramec River Basin.

Bureau of Outdoor Recreation, Denver, Colorado

Determination of recreational needs in the proposed Pine Ford Lake area. (Scheduled for completion by May 1, 1979. See reference 530 for description of methods. Principal investigator: William R. Michels)

Central Missouri State University, Warrensburg (Department of Biology)

Survey of the invertebrate faunas of caves to be inundated by the Union Lake, Bourbeuse River, Missouri. (Principal investigator: Duane Marquart)

Lieutenant John Craig, Fort Leonard Wood, Missouri

Zoogeographic study of invertebrates of caves of the Ozark Plateau. (Sponsored by National Speleological Society and Theodore Roosevelt Memorial Fund of the American Museum of Natural History, New York.)

East-West Gateway Coordinating Council, St. Louis

Study to develop measures for improving water quality in the St. Louis area (St. Louis City, St. Louis County, St. Charles County, Franklin County, and Jefferson County). The program is being conducted under the authorization, and is intended to fulfill the requirements of, section 208 of Public Law 92-500, the Federal Water Pollution Control Act, as amended in 1972. The program is fully funded by a grant from the U.S. Environmental Protection Agency. See reference 549 for list of reports generated as of July, 1977. (Principal investigator: J. Edward Sporn)

Richard Fendlason, Ballwin, Missouri

Tagging study of smallmouth bass populations in the Meramec River and other Ozark streams.

Metropolitan St. Louis Sewer District (MSLSD)

Preparation of an Environmental Impact Statement for development of a sewage treatment system for the lower Meramec River Basin area. Ryckman, Edgerly, Tomlinson, and Associates (RETA), St. Louis, Missouri, is conducting the environmental studies. Scheduled for completion in summer, 1978. (Principal investigators: Frank E. Janson, MSLSD, Dr. James N. Speakman, RETA)

Appendix 3. Continued.

Missouri Department of Conservation, Fisheries Research Section,
Columbia

Statewide watershed fishing pressure survey--to show distribution of fishing pressure in the state by watershed and type of water. (Principal investigator: Willis D. Hanson)

Stabilizing and improving Ozark streams--an evaluation of artificial pool development. (Principal investigator: Otto F. Fajen)

Evaluation of U.S.S.C.S. Fourche Creek watershed project--to measure influences of small S.C.S. impoundments on this stream and biota in order to better predict effects of other S.C.S. projects in the Ozark region. A similar project is also being done on the Little Black River watershed project. (Principal investigator: Otto F. Fajen)

The stream resources of Missouri--a development of an aquatic habitat classification and evaluation procedure, stream management information system, an inventory of stream habitat condition, and a comprehensive stream management plan for Missouri. (Principal investigators: William L. Pflieger and Otto F. Fajen)

Life history of wild rainbow trout in Missouri--to summarize all information on self-sustained trout populations in the state. (Principal investigator: Spencer E. Turner)

Evaluation of the 12-inch minimum length limit on black bass in streams. (Principal investigator: Otto F. Fajen)

Water quality of the southeast Ozark mining area--to document improvements in streams following improved waste treatment facilities at mines, mills, and smelters. (Principal investigator: Richard M. Duchrow)

Pollution investigations--routine investigations of reported fish kills and studies of chronic pollution problems. (Principal investigator: Dr. James R. Whitley)

Interagency coordination and liaison in the area of water quality control--an attempt to coordinate fish and wildlife interests in development of water quality standards, effluent standards, and water resources project planning through a technical assistance program. (Principal investigator: Dr. James R. Whitley)

AD-A122 723

AQUATIC AND WILDLIFE RESOURCES OF THE MERAMEC RIVER
BASIN MISSOURI A SELECTED BIBLIOGRAPHY(U) MISSOURI
COOPERATIVE WILDLIFE RESEARCH UNIT COLUMBIA
D E SIMPSON ET AL. FEB 78

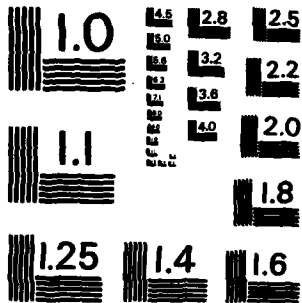
2/2

UNCLASSIFIED

F/G 6/6

NL

					END DATE FILMED 7 83 DTIC
--	--	--	--	--	---------------------------------------



MICROCOPY RESOLUTION TEST CHART
NATIONAL BUREAU OF STANDARDS-1963-A

Appendix 3. Continued.

**Missouri Department of Conservation, Fisheries Research Section,
Columbia**

Evaluation of high quality trout fishery in Missouri--to determine the effect of a 15-inch minimum length limit on trout and a daily creel limit of three trout (includes rainbows and browns) upon the trout population and angler catch in the Meramec and North Fork rivers. (Principal investigator: Spencer E. Turner)

Study of the species composition and distribution of mussels in the Meramec River Basin. (Principal investigator: Alan Buchanan; funded by the St. Louis District, U. S. Army Corps of Engineers)

Study of effects of lead mine tailings on aquatic life in the Big River. Benthic macroinvertebrates, substrate, water depth, and cover are being used to evaluate habitat. Effects on fish will be determined by population estimates and qualitative sampling. (Principal investigator: James M. Czarnecki)

208 Stream Resources Plan--evaluation of the impact of all point and non-point pollution sources upon the stream resources of Missouri as a part of a statewide plan for eliminating non-point pollution. This project is being funded by a Missouri Department of Natural Resources administered Environmental Protection Agency grant. (Principal investigators: Richard M. Duchrow and Everett F. Robinson-Wilson)

**Missouri Department of Conservation, Wildlife Research Section,
Columbia**

Determination of methods to improve yield of preferred deer foods. (Principal investigators: Wayne Porath and Oliver Torgerson)

Evaluations of spring and summer foods of Ozark deer. (Principal investigators: Oliver Torgerson and Wayne Porath)

Measurements of deer population trends. (Principal investigators: Oliver Torgerson and Wayne Porath)

Analysis of deer harvest and hunter pressure. (Principal investigators: Oliver Torgerson and Wayne Porath)

Determination of white-tailed deer productivity and fawn mortality in east-central Missouri. (Principal investigators: Wayne Porath and Oliver Torgerson)

Appendix 3. Continued.

Missouri Department of Conservation, Wildlife Research Section,
Columbia

Study of bobwhite quail population dynamics in Missouri.
(Principal investigator: Jack A. Stanford)

Analysis of land use and wildlife habitat in Missouri--to develop and perfect for evaluating wildlife habitat on a species basis, a quantitative and qualitative system of numerically rating vegetative and land-use patterns affecting land carrying capacity for wildlife. (Principal investigator: Jack A. Stanford)

Statewide wild turkey survey--poult production and juvenile mortality, hunting season evaluation, and turkey distribution as reported by deer hunters. (Principal investigator: John B. Lewis)

Wild-turkey population dynamics: research-trapping-banding-recovery program at Lake Spring. (Principal investigator: John B. Lewis)

Furbearer harvest surveys--fur harvest survey and survey of bountied species. (Principal investigators: Frank W. Sampson and David W. Erickson)

Muskrat, raccoon, and mink productivity. (Principal investigators: Frank W. Sampson and David W. Erickson)

Wood duck investigations in Missouri. (Principal investigators: Bill T. Crawford and A. Karl Slagle)

Cottontail production and population inventory--roadside census and harvest evaluation. (Principal investigator: Kenneth C. Sadler)

Roadside census of mourning doves. (Principal investigator: Kenneth C. Sadler)

Squirrel production and harvest. (Principal investigator: Donald M. Christisen)

Annual survey of mast yields and improved mast production. (Principal investigator: Donald M. Christisen)

Small game harvest surveys. (Principal investigators: Frank W. Sampson and David W. Erickson)

Food habits of fox and gray squirrels in Missouri. (Principal investigator: Leroy J. Korschgen)

Appendix 3. Continued.

Missouri Department of Conservation, Wildlife Research Section,
Columbia

A survey of the birds of Missouri. (Principal investigator:
Richard L. Clawson)

Evaluation of management practices for importance to non-game
birds. (Principal investigator: Richard L. Clawson)

Furbearer scent station survey--preliminary study. (Principal
investigator: David W. Erickson)

Deer hunter information survey. (Principal investigators:
Wayne Porath and Oliver Torgerson)

Missouri Natural Area Survey, St. Louis

Survey of natural areas in Missouri, including some in counties
within the Meramec River Basin. Information and reports on
certain areas are on file at the Survey's office. (Principal
investigator: Roger Pryor)

Ron Oesch, Glendale, Missouri

Preparation of a manuscript on naiades of Missouri. (Scheduled
for completion in early 1978).

Don Rimbach, St. Louis, Missouri

Preparation of a book to be entitled Stop Meramec Lake--It's
a Damsite Worse than Teton. Included will be a chapter which
describes location of hibernating and nursery colonies of
endangered bats within the area to be affected by the proposed
impoundment. Also will discuss incidences which have occurred
during construction of the dam.

Society for the Study of Amphibians and Reptiles, Milwaukee,
Wisconsin

General studies of amphibians and reptiles in Missouri.
(Principal investigator: Dr. Max Nickerson)

Southern Illinois University-Edwardsville, Biology Department

Study of fishes of the greater St. Louis Area. (Principal
investigators: Dr. Jamie Thomerson and Tom Keevin)

Appendix 3. Continued.

**U. S. Environmental Protection Agency, Region 7 Laboratory,
Kansas City, Kansas**

**Survey of water quality of Big River from Leadwood, Missouri,
to Washington State Park, with emphasis of factors which affect
aquatic productivity, especially as related to fish production.
(Principal investigator: Steve Sisk)**

**U. S. Forest Service, Clark National Forest, Supervisor's
Office, Rolla, Missouri**

**Systematic collection of data for habitat evaluation and
management recommendations for land compartments in Clark
National Forest. (Principal investigator: Roger Kirkman)**

University of Missouri-Rolla, Institute of River Studies

**Water supply study of Meramec River Basin, including
aspects of hydrology and engineering, environment, law,
and economics. Environmental studies will include compilation
of available data on rare and endangered species in the Basin,
compilation of information on species of aquatic life known to
exist in streams of the Basin, and inventory and tabulation of
existing water quality data. Information generated from these
and other studies will be used to assess environmental
consequences of water supply alternative. (Principal investi-
gator for environmental studies: Dr. Bobby G. Wixson)**

Washington University, St. Louis

**Various studies of the fauna and flora of Tyson Research
Center on the Meramec River near Eureka, Missouri. (Principal
investigator: Dr. Richard W. Coles)**

DATE
ILME