

AD-A106 512

PRC CONSOER TOWNSEND INC ST LOUIS MO

NATIONAL DAM SAFETY PROGRAM. WESTHOFF DAM (MO 11140), MISSISSIP--ETC(U)

SEP 80 W G SHIFRIN

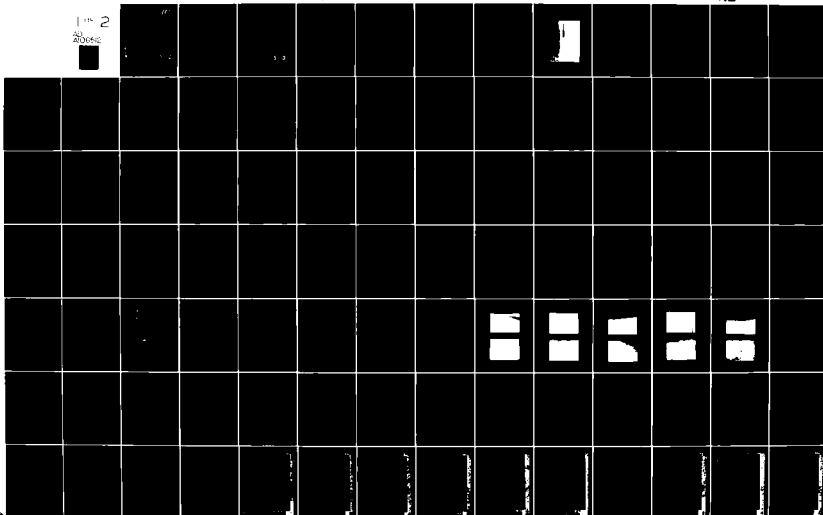
F/G 13/13

DACW43-80-C-0094

NL

UNCLASSIFIED

1 of 2
AD-A106 512



LEVEL



MISSISSIPPI-SALT-QUINCY RIVER BASIN

AD A106512

WESTHOFF DAM
LINCOLN COUNTY, MISSOURI
MO. III40

**PHASE I INSPECTION REPORT
NATIONAL DAM SAFETY PROGRAM**

FILE COPY



**United States Army
Corps of Engineers**
... Serving the Army
... Serving the Nation

St. Louis District

**DTIC
ELECTE
NOV 2 1981**
S D

PREPARED BY: U. S. ARMY ENGINEER DISTRICT, ST. LOUIS

FOR: STATE OF MISSOURI

DISTRIBUTION STATEMENT A

Approved for public release;
Distribution Unlimited

SEPTEMBER, 1980

81 10 26 055

UNCLASSIFIED

SECURITY CLASSIFICATION OF THIS PAGE (When Data Entered)

REPORT DOCUMENTATION PAGE		READ INSTRUCTIONS BEFORE COMPLETING FORM
1. REPORT NUMBER	2. GOVT ACCESSION NO. AD-A106	3. RECIPIENT'S CATALOG NUMBER 512
4. TITLE (and Subtitle) Phase I Dam Inspection Report National Dam Safety Program Westhoff Dam (MO 11140) Lincoln County, Missouri		5. TYPE OF REPORT & PERIOD COVERED Final Report
7. AUTHOR(s) Consoer, Townsend and Associates, Ltd.		6. PERFORMING ORG. REPORT NUMBER
9. PERFORMING ORGANIZATION NAME AND ADDRESS U.S. Army Engineer District, St. Louis Dam Inventory and Inspection Section, LMSED-PD 210 Tucker Blvd., North, St. Louis, Mo. 63101		8. CONTRACT OR GRANT NUMBER(s) DACW43-80-C-0094
11. CONTROLLING OFFICE NAME AND ADDRESS U.S. Army Engineer District, St. Louis Dam Inventory and Inspection Section, LMSED-PD 210 Tucker Blvd., North, St. Louis, Mo. 63101		10. PROGRAM ELEMENT, PROJECT, TASK AREA & WORK UNIT NUMBERS
14. MONITORING AGENCY NAME & ADDRESS (if different from Controlling Office) National Dam Safety Program, Westhoff Dam (MO 11140), Mississippi - Salt - Quincy River Basin, Lincoln County, Missouri. Phase I Inspection Report.		12. REPORT DATE September 1980
16. DISTRIB Approved for release; distribution unlimited. (1) W-IT-1-151111		13. NUMBER OF PAGES Approximately 130
17. DISTRIBUTION STATEMENT (of the abstract entered in Block 20, if different from Report)		15. SECURITY CLASS. (of this report) UNCLASSIFIED
18. SUPPLEMENTARY NOTES		15a. DECLASSIFICATION/DOWNGRADING SCHEDULE
19. KEY WORDS (Continue on reverse side if necessary and identify by block number) Dam Safety, Lake, Dam Inspection, Private Dams		
20. ABSTRACT (Continue on reverse side if necessary and identify by block number) This report was prepared under the National Program of Inspection of Non-Federal Dams. This report assesses the general condition of the dam with respect to safety, based on available data and on visual inspection, to determine if the dam poses hazards to human life or property.		

DD FORM 1 JAN 73 1473

EDITION OF 1 NOV 65 IS OBSOLETE

UNCLASSIFIED

SECURITY CLASSIFICATION OF THIS PAGE (When Data Entered)



DEPARTMENT OF THE ARMY
ST. LOUIS DISTRICT CORPS OF ENGINEERS
210 TUCKER BOULEVARD NORTH
ST. LOUIS, MISSOURI 63104

REPLY TO
ATTENTION

SUBJECT: Westhoff Dam (Mo. 11140) Phase I Inspection Report

This report presents the results of field inspection and evaluation of the Westhoff Dam (Mo. 11140).

It was prepared under the National Program of Inspection of Non-Federal Dams.

This dam has been classified as unsafe, non-emergency by the St. Louis District as a result of the application of the following criteria:

- 1) Spillway will not pass 50 percent of the Probable Maximum Flood
- 2) Overtopping could result in dam failure
- 3) Dam failure significantly increases the hazard to loss of life downstream

SIGNED

2 OCT 1980

SUBMITTED BY:

Chief, Engineering Division

Date

SIGNED

APPROVED BY:

Colonel, CE, District Engineer

6 OCT 1980

Date

Accession For	
NTIS GRA&I	<input checked="checked" type="checkbox"/>
DTIC TAB	<input type="checkbox"/>
Unannounced	<input type="checkbox"/>
Justification	
By	
Distribution/	
Availability Codes	
Dist	Avail and/or Special
A	

DTIC
ELECTE
S NOV 2 1981 D
D

WESTHOFF DAM
LINCOLN COUNTY, MISSOURI

MISSOURI INVENTORY NO. 11140

PHASE I INSPECTION REPORT
NATIONAL DAM SAFETY PROGRAM

PREPARED BY
CONSOER, TOWNSEND AND ASSOCIATES, LTD.
ST. LOUIS, MISSOURI
AND
PRC ENGINEERING CONSULTANTS, INC.
ENGLEWOOD, COLORADO
A JOINT VENTURE

UNDER DIRECTION OF
ST. LOUIS DISTRICT, CORPS OF ENGINEERS
FOR
GOVERNOR OF MISSOURI

SEPTEMBER 1980

PHASE I INSPECTION REPORT
NATIONAL DAM SAFETY PROGRAM

Name of Dam: Westhoff Dam, Missouri Inv. No. 11140
State Located: Missouri
County Located: Lincoln
Stream: An unnamed tributary of Bobs Creek
Date of Inspection: April 21, 1980

Assessment of General Condition

Westhoff Dam was inspected by the engineering firms of Consoer, Townsend and Associates, Ltd. and PRC Engineering Consultants, Inc. (A Joint Venture) of St. Louis, Missouri according to the U. S. Army Corps of Engineers "Engineer Regulation No. 1110-2-106" and additional guidelines furnished by the St. Louis District of the Corps of Engineers. Based upon the criteria in the guidelines, the dam is in the high hazard potential classification, which means that urban development with more than a small number of habitable structures could be affected in the event of failure of the dam. Within the estimated damage zone of one mile downstream of the dam are four dwellings, four buildings, three trailers, one gas station, and a pond which may be subjected to flooding, with possible damage and/or destruction, and possible loss of life. Westhoff Dam is in the small size classification since it is 25 feet high, and impounds more than 50 acre-feet but less than 1,000 acre-feet of water.

The overall condition of the dam and appurtenant structures appears to be satisfactory, however, the dam does not have adequate spillway capacity. Our inspection and evaluation indicates that the spillway of Westhoff Dam does not meet the criteria set forth in the guidelines for a dam having the above size and hazard potential. Westhoff Dam, being a small size dam with a high hazard potential, is required by the guidelines to pass from one-half of the Probable Maximum Flood to the Probable Maximum Flood without overtopping. Considering the volume of water impounded, the relatively narrow valley and the number of dwellings downstream of the dam, the PMF is considered the appropriate spillway design flood for this dam. It was determined that the reservoir/spillway system can accommodate approximately 20 percent of the Probable Maximum Flood without overtopping "effective top of the dam". The "effective top of the dam" is defined as the lake elevation at which corresponding outflow velocity exceeds suggested maximum permissible mean velocity in the emergency spillway channel. Our evaluation indicates that the reservoir/spillway system can accommodate the one-percent chance flood (100-year flood) without overtopping the "effective top of the dam".

The Probable Maximum Flood is defined as the flood discharge that may be expected from the most severe combination of critical meteorological and hydrologic conditions that are reasonably possible in the region.

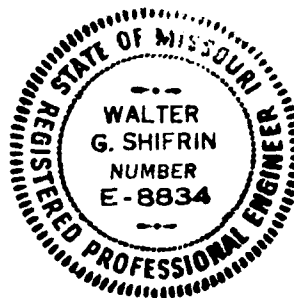
Other deficiencies noted by the inspection team were: livestock activities on the embankment, the erosion gullies on the left abutment and upstream of the emergency spillway, minor wave erosion on the upstream slope, small saplings on the upstream slope, damage of protective grass cover on the emergency spillway by vehicular traffic, damage of downstream slope area surrounding the principal spillway outlet pipe by cattle, minor obstructions in the emergency spillway approach area, a need for periodic inspec-

tion by a qualified engineer and a lack of maintenance schedule.
The lack of seepage and stability analyses on record is also a
deficiency that should be corrected.

It is recommended that the owner take action to correct
or control the deficiencies described above.



Walter G. Shifrin, P.E.





Overview of Westhoff Lake Dam

NATIONAL DAM SAFETY PROGRAM

WESTHOFF DAM, I.D. No. 11140

TABLE OF CONTENTS

<u>Sect. No.</u>	<u>Title</u>	<u>Page</u>
SECTION 1	PROJECT INFORMATION	1
	1.1 General	1
	1.2 Description of Project	3
	1.3 Pertinent Data	8
SECTION 2	ENGINEERING DATA	11
	2.1 Design	11
	2.2 Construction	11
	2.3 Operation	11
	2.4 Evaluation	11
SECTION 3	VISUAL INSPECTION	13
	3.1 Findings	13
	3.2 Evaluation	20

TABLE OF CONTENTS

(Continued)

<u>Sect. No.</u>	<u>Title</u>	<u>Page</u>
SECTION 4	OPERATION PROCEDURES	22
	4.1 Procedures	22
	4.2 Maintenance of Dam	22
	4.3 Maintenance of Operating Facilities	22
	4.4 Description of Any Warning System in Effect	23
	4.5 Evaluation	23
SECTION 5	HYDRAULIC/HYDROLOGIC	24
	5.1 Evaluation of Features	24
SECTION 6	STRUCTURAL STABILITY.	29
	6.1 Evaluation of Structural Stability.	29
SECTION 7	ASSESSMENT/REMEDIAL MEASURES.	32
	7.1 Dam Assessment	32
	7.2 Remedial Measures.	34

TABLE OF CONTENTS
(Continued)

LIST OF PLATES

	<u>Plate No.</u>
LOCATION MAP	1
PLAN, ELEVATION AND SECTION OF DAM	2
DESIGN COMPUTATIONS AND DRAWINGS	3-8
GEOLOGIC MAPS	9-10
SEISMIC ZONE MAP	11

APPENDICES

APPENDIX A	-	PHOTOGRAPHS
APPENDIX B	-	HYDROLOGIC AND HYDRAULIC COMPUTATIONS

PHASE I INSPECTION REPORT
NATIONAL DAM SAFETY PROGRAM

WESTHOFF DAM, Missouri Inv. No. 11140

SECTION 1: PROJECT INFORMATION

1.1 General

a. Authority

The Dam Inspection Act, Public Law 92-367 of August, 1972, authorizes the Secretary of the Army, through the Corps of Engineers, to initiate a national program of dam inspections. Inspection for Westhoff Dam was carried out under Contract DACW 43-80-C-0094 between the Department of the Army, St. Louis District, Corps of Engineers, and the engineering firms of Consoer, Townsend & Associates, Ltd., and PRC Engineering Consultants, Inc. (A Joint Venture), of St. Louis, Missouri.

b. Purpose of Inspection

The visual inspection of Westhoff Dam was made on April 21, 1980. The purpose of the inspection was to make a general assessment as to the structural integrity and operational adequacy of the dam embankment and its appurtenant structures.

c. Scope of Report

This report summarizes available pertinent data relating to the project, presents a summary of visual observations made during the field inspection, presents an assessment of hydrologic and hydraulic conditions at the site, presents an assessment of the structural adequacy of the various project features and assesses the general condition of the dam with respect to safety.

Subsurface investigations, laboratory testing and detailed analyses were not within the scope of this study. No warranty as to the absolute safety of the project features is implied by the conclusions presented in this report.

It should be noted that in this report reference to left or right abutments is viewed as looking downstream. Where left abutment or left side of the dam is used in this report, this also refers to the west abutment or side, and right to the east abutment or side.

d. Evaluation Criteria

The inspection and evaluation of the dam is performed in accordance with the U.S. Army Corps of Engineers "Engineer Regulation No. 1110-2-106" and additional guidelines furnished by the St. Louis District office of the Corps of Engineers for Phase I Dam Inspection.

1.2 Description of the Project

a. Description of Dam and Appurtenances

The following description is based exclusively upon observations and measurements made during the visual inspection and from a conversation made with Mr. Leonard Westhoff, Jr., the owner. Original SCS design drawings and some computation sheets were located and are presented in this report, however, most of the dimensions on the design drawings do not correspond with the field measurements.

The dam is a homogeneous, rolled earthfill structure with a straight alignment between earthen abutments. The crest width of the embankment is 16 feet and the crest has a total length of 730 feet (excluding the top width of the emergency spillway). According to the drawings, the crest was supposed to be 10 feet wide and no crest length was given. The crest elevation is at approximately 470 feet above mean sea level (MSL). The maximum height of the embankment is 25 feet. The upstream and downstream slopes were measured to be 1 vertical to 3 horizontal (1V to 3H) and 1V to 2.25H, respectively. According to the drawings, the upstream and downstream slopes were to be 1V to 3H and 1V to 2H, respectively.

According to Mr. Westhoff, a trapezoidal shaped core trench was excavated parallel to the dam axis. The trench was not excavated to bedrock. The compaction of the embankment was achieved only by the earthmoving equipment used for the placement of the fill. No compaction control tests were performed. The materials used for the embankment were removed from the reservoir.

There were two spillways designed for the dam, a principal spillway and an emergency spillway. The principal spillway is an 18-inch diameter (17.5-inch I.D.) welded steel pipe, laid through the fill approximately 310 feet from the left abutment, with two steel antiseep collars welded to it; one is located at 25 feet and the other at 50 feet from the inlet. The antiseep collars are 6-foot square plates and are not founded on bedrock. A segmentally shaped endplate, approximately 3.5 inches in its maximum rise is welded to the opening at the top of the pipe at the inlet end; from the straight edge of the endplate, the pipe itself has been cut back on a 45 degree angle from the plane of the pipe opening. This constitutes the inlet of the principal spillway. The 104-foot long spillway conduit falls 8.23 feet from inlet end to outlet end; the inlet invert elevation is 456.8 and the outlet invert elevation is 448.57. The outlet end condition allows flows to fall approximately 20 inches to a pool area slightly wider than the downstream channel. The emergency spillway was cut into the top of the dam at the right abutment area with a measured 58 foot top width and an approximately 30 foot bottom width at the control section. The channel is 3 feet deep and has a side slope of from 1V to 3-1/3H on the right side and 1V to 5-1/3H on the left side. The channel then widens and follows along the toe of the dam and outlets at the same point as the principal spillway, joining the downstream channel perpendicularly at this point. The channel invert and sides have a dense grass cover protection.

There were no regulated outlet works or low-level drains provided for this dam.

b. Location

Westhoff Dam is located in the state of Missouri, Lincoln County, across an unnamed tributary to Bobs Creek which is tributary to the Mississippi River. It can be found on the 7.5 minute series of the Winfield, Mo.-Ill. Quadrangle, in survey No. 816, Range 2E, Township 49N.

c. Size Classification

According to the "Recommended Guidelines for Safety Inspection of Dams", by the U.S. Department of the Army, Office of the Chief Engineer, the dam is classified in the dam size category as being "small" since its storage is less than 1,000 acre-feet and more than 50 acre-feet. The dam is also classified as "small" in dam size category because its height is 25 feet. The overall size classification is, accordingly, "small".

d. Hazard Classification

The dam has been classified as having a "high" hazard potential in the National Inventory of Dams, on the basis that in the event of failure of the dam or its appurtenances, excessive damage could occur to urban development with more than a small number of habitable structures, together with the possibility of the loss of life. Our findings concur with this classification. Within the estimated damage zone which extends approximately one mile downstream from the dam, are four dwellings, one pond, three trailers, a gas station, and four buildings.

e. Ownership

Westhoff Dam is owned privately by Mr. and Mrs. Leonard Westhoff, Jr. and Mr. Eugene Franke. Mr. and Mrs. Westhoff, Jr. own the crest, upstream slope and spillway sections of the dam and Mr. Franke owns the downstream slope. The mailing addresses are Mr. and Mrs. Leonard Westhoff, Jr., R.R. 2, Box 248, Winfield, Missouri, 63389, and Mr. Eugene Franke, R.R. 2, Box 250, Winfield, Missouri, 63389.

f. Purpose of Dam

The main purposes of the dam are flood control and to retain soil that is eroded from the watershed upstream of the dam.

g. Design and Construction History

Westhoff Dam was designed by the Department of Agriculture, Soil Conservation Service, Troy, Missouri office. Mr. Jack Angle was the soil conservationist for the project. The dam was built in December, 1974 by G & P Ditching Service, Inc., O'Fallon, Missouri.

Mr. Charles Grabenhorst, who is with G & P Ditching Service, Inc., stated that the dam had an adequate core trench which extended into solid clay material. The dam was built according to Soil Conservation Service standards and specifications. Mr. Angle periodically inspected the construction of the dam.

h. Normal Operational Procedures

There is no operational procedure which is followed for the operation of Westhoff Dam Reservoir. Normally, the water level in the reservoir is controlled by rainfall, runoff, evaporation, and the crest elevation of the principal spillway. This is the normal procedure for operation of the reservoir.

1.3 Pertinent Data

a. Drainage Area (square miles): 0.58

b. Discharge at Damsite

Estimated experienced maximum flood (cfs): 350

Estimated ungated spillway capacity with
reservoir at top of dam elevation (cfs): 902

c. Elevation (Feet above MSL)

Top of dam: 470

Spillway crest:

Principal Spillway 456.8

Emergency Spillway 467

Normal Pool: 456.8

Maximum Experienced Pool: 469

Observed Pool: 457

d. Reservoir

Length of pool at top of dam elevation (Feet): 1400

e. Storage (Acre-Feet)

Top of dam: 95

Spillway crest:

Principal Spillway 3

Emergency Spillway 58

Normal Pool: 3

Maximum Experienced Pool: 83+

Observed Pool: 3

f. Reservoir Surfaces (Acres)

Top of dam: 14.5

Spillway crest:

Principal Spillway	1.9
Emergency Spillway	10.5
Normal Pool:	1.9
Maximum Experienced Pool:	14-
Observed Pool:	2

g. Dam

Type:	Rolled, Earthfill
Crest Length:	730 feet
Structural Height:	25 feet
Hydraulic Height:	25 feet
Crest width:	16 feet
Embankment slopes:	
Downstream	1V to 2.25H (measured)
Upstream	1V to 3H from crest to waterline, remainder unknown
Zoning:	Unknown
Impervious core:	None according to design drawing
Cutoff:	None
Grout curtain:	None

h. Diversion and Regulating Tunnel None

i. Spillway

Type:	
Principal Spillway	17.5-inch I.D. steel pipe, uncontrolled
Emergency Spillway	Open channel, uncontrolled
Length of crest:	
Principal Spillway	17.5-inch I.D. steel pipe
Emergency Spillway	32 feet (bottom width of the trapezoidal channel)
Crest Elevation (feet above MSL):	

Principal Spillway 456.8
Emergency Spillway 467

j. Regulating Outlets None

SECTION 2: ENGINEERING DATA

2.1 Design

Design sketches are available from the Department of Agriculture, Soil Conservation Service, and are included as part of this report. The sketches were prepared in June of 1974 by the Department of Agriculture, Soil Conservation Service.

The dam was designed on the basis of Soil Conservation Service Standard and Specifications for Ponds (Bulletin 378). Engineering computations for this project were also available and are included in this report.

2.2 Construction

No data are available concerning the construction of the dam and appurtenant structures, other than the construction history given in Section 1.2a and Section 1.2g

2.3 Operation

No operation records are available for Westhoff Dam.

2.4 Evaluation

a. Availability

The availability of engineering data is fair and consists of the design sketches, engineering computations, State Geological Maps and U.S.G.S. Quadrangle Sheets. No data were available with regard to subsurface investigations or soil testing for the dam.

b. Adequacy

The conclusions presented in this report are based on field measurements, the available engineering data, past performance and present condition of the dam. The available data and the field measurements are adequate to evaluate the hydraulic and hydrologic capabilities of the dam. Seepage and stability analyses comparable to the requirements of the "Recommended Guidelines for Safety Inspection of Dams" were not available, which is considered a deficiency. These seepage and stability analyses should be performed for appropriate loading conditions and made a matter of record.

c. Validity

Design sketches and computations were available for review. From field measurements, the dam appears to have been constructed according to the available sketches, except for the discrepancies described in Section 1.2a.

SECTION 3: VISUAL INSPECTION

3.1 Findings

a. General

A visual inspection of the Westhoff Dam was made on April 21, 1980. The following persons were present during the inspection:

<u>Name</u>	<u>Affiliation</u>	<u>Disciplines</u>
Dr. M.A. Samad	PRC Engineering Consultants, Inc.	Project Engineer, Hydraulics and Hydrology
Mark R. Haynes	PRC Engineering Consultants, Inc.	Soils and Mechanical
Robert McLaughlin	PRC Engineering Consultants, Inc.	Civil
Razi Quraishi	PRC Engineering Consultants, Inc.	Geology
John Lauth	Consoer, Townsend & Assoc., Ltd.	Civil and Structural
Mr. Leonard Westhoff, Jr.	One of the Owners	

Specific observations are discussed below.

b. Dam

The crest of the dam is adequately protected against surface erosion by a good vegetative cover. The crest is used occasionally as a farm road. Consequently, a few small ruts have been formed. There was no evidence of significant settlement or cracking on the crest. No significant deviations in horizontal or vertical alignment were apparent. According to Mr. Westhoff, the dam has never been overtopped and no evidence indicating the contrary was observed.

The upstream slope has no riprap protection, consequently, some minor erosion, due to wave action, has occurred near the water surface. The portion of the slope above the water surface is adequately protected from surface erosion by a good vegetative cover. The slope showed signs of grazing livestock activity. There were some very small shallow surface sloughs along the slope and a few small U-shaped scarps near the water surface. One erosion gully was observed near the center of the emergency spillway extending from the crest of the spillway down the slope to near the water surface. The gully was approximately 2 feet wide and 1 foot deep. Some small saplings were observed along the shoreline and around the intake to the service spillway. No depressions, cracks or settlements were apparent on the slope. According to the available drawings, a bench was to be constructed at the elevation of the principal spillway inlet. The bench, however, was not observed.

The downstream slope from the right abutment to just left of the principal spillway appeared to be used to pasture livestock and the other portion of the embankment slope appeared to be used for some other agricultural activity. The right side of the slope appeared to be damaged by grazing livestock similarly to the upstream slope. There were some very small shallow surface sloughs along the slope and one cattle trail. The cattle trail extended along the entire portion of the slope and was located approximately 3 feet below the crest. The slope around the principal spillway appeared to have been slightly steepened due to the grazing livestock. The entire slope appeared to have an adequate vegetative cover to protect it from surface erosion. No bulges, depressions, cracks or settlements were apparent on the slope. No seepage was apparent along the toe of the slope.

Both abutments slope gently upward from the crest of the dam. No erosion or instabilities were observed on the right abutment. An erosion gully was observed just upstream of the embankment/abutment contact on the left abutment. No instabilities were apparent on the left abutment. No seepage was observed on either abutment.

No rodent activity was apparent on the embankment or abutments.

c. Project Geology and Soils

(1) Project Geology

The damsite is located on the unnamed tributary of Bobs Creek in the Springfield Plateau section of the Ozark Plateaus Physiographic Province. The Springfield Plateau includes that part of the Ozarks which is underlain mainly by

the rocks of Mississippian age. Most of the Springfield Plateaus are prairies which are separated by valleys cut 200 feet to 300 feet below the upland surface. Most of the area of the Springfield Plateaus is overlain by a mantle of chert released by weathering of the Mississippian Limestone. The topography of the damsite area is rolling with U-shaped valleys. Elevation ranges from 500 feet above M.S.L. (nearly 0.25 miles west of the damsite) to 470 feet M.S.L. at the Westhoff Lake Dam. The reservoir slopes are 5° to 18° from horizontal. The reservoir appears to be water tight. A slight to moderate localized erosional gully activity was observed at the northeastern portion of the reservoir rim. This localized gully erosion appears to be not a detriment to the stability of the reservoir bank.

The area at the damsite is covered with a mixture of slope wash deposits of glacial-fluvial origin and loess consisting of yellowish-brown sandy silt origin. No outcropping of bedrocks was seen at the damsite.

The inlet and outlet areas of the unnamed tributary of Bobs Creek contain Quaternary alluvium. The areal bedrock geology beneath the slope wash deposits as shown on the Geologic Map of Missouri (1979), Plate 9, consists of Pennsylvanian rocks of the Cherokee Group (cyclic deposits of shales, limestone, and sandstone) and Mississippian limestones of the Salem and St. Louis Formations.

No faults have been identified at the vicinity of the damsite. The closest trace of a fault to the damsite is the Cap Au Gres faulted flexure nearly 5 miles north of the site. The Cap Au Gres faulted flexure had its last movement in post-Pennsylvanian, pre-Pleistocene time. This fault appears to have no effect on the dam.

Westhoff Lake Dam consists of a homogeneous earth-fill embankment, a principal spillway metal pipe located at the mid-section of the embankment and an emergency spillway is located at the right abutment end of the embankment.

No boring logs or construction reports were available which could indicate foundation conditions encountered during dam construction. Based upon the visual inspection and from the personal communication with the owner, Mr. Westhoff, the embankment probably rests on glacial deposits of yellowish-brown clayey silt and some fine to medium sand. The foundation material underneath the principal spillway metal pipe is compacted embankment fill (yellowish-brown silty clay). The emergency spillway was cut into the compacted embankment fill.

(2) Project Soils

According to the "Missouri General Soil Map and Soil Association Descriptions" published by the Soil Conservation Service, the materials in the general area of the dam belong to the soil series of Menfro-Winfield-Lindley in the Central Mississippi Valley wooded slopes family. The soils were basically formed from loess and glacial till. The permeability of these soils range from moderate to moderately slow. The Lindley soil is generally quite susceptible to erosion. If the Lindley soil type was used in the embankment, the potential of failure of the embankment would be increased due to erosion during overtopping.

Materials removed from the embankment on the upstream and downstream slopes approximately one foot below the vegetative cover appeared to be a yellowish-brown silty clay. Based upon the Unified Soil Classification System, the

soil would probably be classified as a CL. This soil type generally has the following characteristics: impervious with a coefficient of permeability less than 1.0 foot per year; medium shear strength; and a high resistance to piping.

d. Appurtenant Structures

(1) Principal Spillway

The principal spillway conduit has been in place for five years and appears to be in good condition. Judging from the exposed ends of the pipe, it would appear that the entire length was protected with an asphaltic covering. The inlet end has some exposed areas of the pipe unprotected which have a light coating of rust; the outlet end also has approximately one to two feet of unprotected and rusted conduit. There is a small growth of bush type plants adjacent to the inlet where dead grass, etc., is able to collect and the inlet itself is set back into the upstream slope forming a gradual approachway; since there is no headwall-wingwall construction it is possible for moss and other floating debris to be carried by the current around the approachway and collect at the inlet opening. The edge of the downstream slope in the vicinity of the principal spillway outlet has no rock or grass protection. The area has been trampled and eroded due to livestock watering and wave action.

(2) Emergency Spillway

The emergency spillway crest is three feet lower than the top of dam and is constructed into the right end of the embankment. The centerline of the spillway channel is perpendicular to the axis of the dam at the inlet, but curves around the downstream slope of the dam and follows the embank-

ment until it intersects with the principal spillway outlet. In fact, the downstream slope and the left channel side slope merge and function as one. The channel invert and side slopes seem to have adequate grass cover protection; however, at the inlet there appears to be a soft spot where vehicular tires have rutted, and grass coverage is sparse. The emergency spillway was used during a storm in 1975 and approximately two feet of water was carried over the crest, according to the owner. No damage, cracks, bulges or settlements, or misalignments were observed. Some minor erosion was observed at the downstream end of the channel, it takes the form of gulleys and occurs at the point where the slope steepens just before the entrance to the principal spillway outlet pool area.

(3) Outlet Works

There were no regulated outlet works or low level drain pipes constructed for this dam. Although there is no low-level drain system, the freeboard above normal reservoir level is greater than 10 feet.

e. Reservoir Area

The water level for the reservoir was at elevation 457.0 feet above M.S.L. on the day of inspection.

The reservoir rim is sloped gently and no indication of instability or severe erosion was readily apparent. The slopes surrounding the reservoir are gentle and partially tree-covered and partially in agriculture. There are no homes or other structures built near the reservoir.

f. Downstream Channel

The downstream channel is a well defined meandering channel. The channel has a bottom width of about five feet and a side slope of 1V to 1H on both sides. The channel is approximately eight feet deep. Some trees were observed growing in the channel. The trees could affect the hydraulic efficiency of the channel.

3.2 Evaluation

The visual inspection revealed nothing of a sufficiently significant nature to require immediate remedial action. However, the following conditions were observed during the visual inspection which could cause adverse effects on the dam in the future.

1. The damage to the upstream and downstream slopes due to the grazing livestock, could affect the stability and safety of the dam, if the livestock activity is allowed to continue.

2. The erosion on the left abutment and upstream of the emergency spillway pose potential danger to the stability of the embankment.

3. The small saplings on the upstream slope do not pose a danger to the safety of the dam at this time. Nevertheless, if the saplings are allowed to grow, they could pose a potential danger to the safety of the dam. Depending upon the extent of the root systems of large trees, the roots could provide paths for piping through the embankment.

4. The minor wave erosion on the upstream slope, if allowed to continue, could affect the structural stability of the dam.

5. The vehicular path worn into the crest of the emergency spillway is in a potentially soft area; since the crest has been rutted and the protective grass cover has been worn away, this area could be severely damaged by the erosive effects of floodwaters passing over the crest.

6. The downstream slope area surrounding the principal spillway outlet pipe has been trampled by cattle maneuvering for drinking water thus destroying the protective grass cover and opening a large area to the erosive effects of rains. Potentially serious problems and local instability could result from this area.

7. The gathering of floating moss, dead grass, and small sapling or bush type plants near the principal spillway inlet approachway could easily result in an inefficient functioning of the spillway.

SECTION 4: OPERATIONAL PROCEDURES

4.1 Procedures

Westhoff Dam is used to impound water from rainfall and runoff for flood control and soil conservation. There are no specific procedures which are followed for the operation of the dam. The water level in the reservoir is controlled by rainfall, runoff, evaporation and by the elevation of the crest of the principal spillway. There are no staff gages or monitoring devices to check the water level.

4.2 Maintenance of Dam

The dam is maintained by the owner, Mr. Leonard Westhoff, Jr. The slopes and the dam crest are mowed periodically. However, a few small trees have started to grow near the principal spillway pipe on the upstream side of the dam.

There are erosion gullies forming at the left abutment contact on the upstream side and at the emergency spillway inlet. This erosion should be arrested before it encroaches into the embankment material.

4.3 Maintenance of Operating Facilities

There are no operating facilities associated with this dam.

4.4 Description of Any Warning System in Effect

The inspection team is not aware of any existing warning system for this dam.

4.5 Evaluation

The operation and maintenance for Westhoff Dam seems to be lacking. The remedial measures as described in Section 7.2 should be undertaken as recommended.

SECTION 5: HYDRAULIC/HYDROLOGIC

5.1 Evaluation of Features

a. Design

The watershed area of the Westhoff Dam upstream from the dam axis consists of approximately 368 acres. The watershed area is wooded and agricultural land with some pasture and range land. Land gradients in the watershed average roughly 1.5 percent. The Westhoff Dam Reservoir is located on an unnamed tributary of Bobs Creek. The reservoir is about 2 miles upstream from the confluence of the unnamed tributary and Bobs Creek. At its longest arm the watershed is approximately 1.25 miles long. A drainage map showing the watershed and the downstream hazard zone is presented as Plate 1 in Appendix B.

Evaluation of the hydraulic and hydrologic features of Westhoff Dam was based on criteria set forth in the Corps of Engineers' "Engineer Regulation No. 1110-2-106" and additional guidance provided by the St. Louis District of the Corps of Engineers. The Probable Maximum Flood (PMF) was calculated from the Probable Maximum Precipitation (PMP) using the methods outlined in the U.S. Weather Bureau Publication, Hydrometeorological Report No. 33. The probable maximum storm duration was set at 24 hours, and storm rainfall distribution was based on criteria given in the Corps of Engineers' EM 1110-2-1411 (Standard Project Storm). The Soil Conservation Service (SCS) method was used for deriving the unit hydrograph, utilizing the Corps of Engineers' computer program HEC-1 (Dam Safety Version). The unit hydrograph parameters are

presented in Appendix B. The SCS method was also used for determining the loss rate. The hydrologic soil group of the watershed was determined by use of published soil maps. The hydrologic soil group of the watershed and the SCS curve number are presented in Appendix B. The curve number, the unit hydrograph parameters, the PMP index rainfall and the percentages for various durations were directly input to the HEC-1 (Dam Safety Version) computer program to obtain the PMF hydrograph. The computed peak discharges of the PMF and one-half of the PMF are 5,266 cfs and 2,633 cfs, respectively.

Both the PMF and one-half of the PMF inflow hydrographs were routed through the reservoir by the Modified Puls Method also utilizing the HEC-1 (Dam Safety Version) computer program. A storm of 50 percent and 25 percent PMF, respectively, preceded the PMF and the 50 percent PMF by four days. The starting elevation for routing antecedent floods was assumed to be equal to the mean annual high water level in the reservoir. The mean annual high water level for Westhoff Dam Reservoir was estimated to be at the crest of the principal spillway. The water level in the reservoir at the end of the four day routing period was at the same elevation as the crest of the principal spillway. The reservoir was assumed at this level before the start of the routing computation for the PMF and one-half of the PMF. The peak outflow discharges for the PMF and one-half of the PMF are 5,156 and 2,531 cfs, respectively. Both the PMF and one-half of the PMF when routed through the reservoir resulted in overtopping of the "effective top of dam". The "effective top of dam" is defined as the lake elevation at which corresponding outflow velocities exceed the suggested maximum permissible mean velocity in the emergency spillway channel.

The size of physical features utilized to develop the stage-outflow relation for the spillway and overtopping of the dam were determined from field notes and sketches, prepared during the field inspection. The reservoir stage-capacity data were based on the U.S.G.S. Maryknoll and Winfield, Missouri Quadrangle topographic maps (7.5 minute series). The spillway and dam overtop rating curve and the reservoir capacity curve are presented in Plates 2 & 3 respectively in Appendix B.

From the standpoint of dam safety, the hydrologic design of a dam must aim at avoiding overtopping. Overtopping is especially dangerous for an earth dam because of its erosive characteristics. The safe hydrologic design of an embankment dam requires a spillway discharge capability, in combination with an embankment crest height that can handle a very large and exceedingly rare flood without dam overtopping.

The Corps of Engineers designs dams to safely pass the Probable Maximum Flood that is estimated could be generated from the dam's watershed. This is the standard for dam safety where overtopping would pose any threat to human life. Accordingly, the hydrologic requirement for safety for this dam is the capability to pass the Probable Maximum Flood without overtopping.

b. Experience Data

It is believed that records of reservoir stage or spillway discharge are not maintained for this site. However, according to Mr. Westhoff, one of the owners, the maximum reservoir level was about 2 feet above the crest of the emergency spillway.

c. Visual Observations

Observations made of the spillway during the visual inspection are discussed in Section 3.1d and evaluated in Section 3.2.

d. Overtopping Potential

As indicated in Section 5.1.a, both the Probable Maximum Flood and one-half of the Probable Maximum Flood when routed through the reservoir, resulted in overtopping of the "effective top of dam" which was determined to be at El. 469.6 feet above M.S.L. The peak outflow discharges for the PMF and one-half of the PMF are 5,156 and 2,531 cfs, respectively. The capacity of the two spillways just before exceeding the mean permissible velocity of 7 ft/sec. in the emergency spillway is 550 cfs. The PMF overtopped the "effective top of dam" by 1.94 feet and one-half of the PMF overtopped the "effective top of dam" by 1.23 feet. The total duration of overflow over the "effective top of dam" is 5 hours and 55 minutes during the PMF and 3 hours and 40 minutes during one-half of the PMF. The spillway/reservoir system of Westhoff Dam is capable of accommodating a flood equal to approximately 20 percent of the PMF just before overtopping the "effective top of dam". The reservoir/spillway system of Westhoff Dam will accommodate the 100-year flood without going over the "effective top of dam" elevation. The results of routing of various percentages of the PMF and one-percent chance flood are presented in the following Table:

SUMMARY OF ROUTINGS OF VARIOUS FLOODS

Flood Routed	Max. Pool Elevation (Ft. above M.S.L.)	Maximum Discharge (cfs)	Depth Above "Effective Top of Dam" Elevation (ft.)	Duration of Flow Above "Effective Top of Dam" Elevation (hrs.)
13% PMF	468.27	198	0	0
17% PMF	469.23	452	0	0
18% PMF	469.41	507	0	0
22% PMF	469.93	804	0.33	0.67
50% PMF	470.83	2531	1.23	3.67
100% PMF	471.54	5156	1.94	5.92
One-Percent Chance Flood	468.93	362	0	0

The failure of the dam could cause extensive damage to the property downstream of the dam and possible loss of life. The estimated damage zone extends approximately one mile downstream of the dam. Within the damage zone are four dwellings, four buildings, three trailers, a pond and one gas station.

SECTION 6: STRUCTURAL STABILITY

6.1 Evaluation of Structural Stability

a. Visual Observations

There were no major signs of settlement or distress observed on the embankment during the visual inspection. The embankment is protected against surface erosion by an adequate cover of vegetation. The damage to the upstream and downstream slopes due to the grazing livestock does not appear to affect the structural stability of the dam at this time. Nevertheless, the problem should be corrected and the damage properly repaired. The minor erosion due to wave action on the upstream slope does not appear to affect the structural stability of the embankment in its present condition. Nevertheless, the erosion should be monitored and if the erosion continues, steps should be taken to control the problem. The erosion on the left abutment and upstream of the emergency spillway pose a potential danger to the dam and should be properly repaired. In the absence of seepage and stability analyses, no quantitative evaluation of the structural stability can be made.

Although the interior of the principal spillway conduit could not be visually inspected, it is assumed that the entire conduit was in a functionally stable condition. The outlet end of the pipe and the immediately following downstream channel reach appear to be generally stable, as does the emergency spillway channel. Two specific conditions which should be pointed out are the soft area and vehicular

ruts within the emergency spillway crest area and the erodible conditions in the spillway outlet area; these two conditions pose potential problems to localized stability. Overall, these appurtenances appear to be structurally stable.

b. Design and Construction Data

No design computations pertaining to the embankment were uncovered during the report preparation phase. SCS design computations pertaining to the hydraulic design of the principal spillway and the emergency spillway were located and are included in this report. Seepage and stability analyses comparable to the requirements of the "Recommended Guidelines for Safety Inspection of Dams" were not available. No embankment or foundation soil parameters are available for carrying out a conventional stability analysis on the embankment. Likewise, construction data relating to the degree of embankment compaction are not available for use in a stability analysis. A standard Soil Conservation Service specification used for Westhoff Dam was located. Nevertheless, no specific information pertaining to the soil type to be used for this dam, degree of compaction to be attained, type of foundation which might be encountered, treatment of the foundation or other information which could be used to evaluate the stability of the dam was in the specification.

c. Operating Records

No operating records were available relating to the stability of the dam or appurtenant structures. The water level on the day of the visual inspection was at the crest of the principal spillway. According to Mr. Westhoff, the reservoir remains full most of the time. No regulated outlet works or low level drain was provided for the dam.

d. Post Construction Changes

No post construction changes have been made to Westhoff Dam.

e. Seismic Stability

The dam is located near the borderline of seismic zones 1 and 2, as defined in "Recommended Guidelines for Safety Inspection of Dams" prepared by the Corps of Engineers, and does not require a seismic stability analysis. An earthquake of the magnitude which would be expected in Seismic Zone 1 or 2 should not cause significant distress to a well designed and constructed earth dam. Available literature indicates no active faults exist in the vicinity of the damsite.

SECTION 7: ASSESSMENT/REMEDIAL MEASURES

7.1 Dam Assessment

The assessment of the general condition of the dam is based upon available data and visual inspection. Detailed investigations, testing and detailed computational evaluations are beyond the scope of a Phase I investigation; however, the investigation is intended to identify any need for such studies.

It should be realized that the reported condition of the dam is based upon observations of field conditions at the time of inspection along with data available to the inspection team.

It is also important to note that the condition of a dam depends upon numerous and constantly changing internal and external conditions, and is evolutionary in nature. It would be incorrect to assume that the present condition of the dam will continue to represent the condition of the dam at some point in the future. Only through continued care and inspection can there be assurance that an unsafe condition could be detected.

a. Safety

The spillway capacity of Westhoff Dam is found to be "Seriously Inadequate". The spillway/reservoir system will accommodate only 20 percent of the PMF without overtopping the "effective top of dam". The surface soils in the embankment and the emergency spillway appear to be silty clay. The PMF overtopped the "effective top of dam" by 1.94 feet and one-half of the PMF overtopped the "effective top of dam" by 1.23

feet. The maximum velocity of flow in the emergency spillway will be about 9 ft/sec. The velocity in the emergency spillway will thus exceed the permissible velocity of 7 ft/sec (Kentucky Blue Grass-Silt clay) during overtopping. Since the physical top of dam is also overtopped during the occurrence of the PMF and one-half of the PMF, the dam itself would be susceptible to erosion due to high velocity of flow on its downstream slope.

No quantitative evaluation of the structural safety of the embankment can be made in view of the absence of seepage and stability analyses. The present embankment and appurtenant structures, however, have reportedly performed satisfactorily since its construction without failure or evidence of instability. The dam has reportedly never been overtopped.

The safety of the dam can be improved if the deficiencies described in Section 6.1a and below are properly corrected according to the procedure given in Section 7.2b. The small saplings on the upstream slope could jeopardize the safety of the dam, if they are allowed to continue to grow. Depending on the extent of the root system of large trees, seepage paths can develop along roots of trees which could lead to piping of the embankment material and cause the embankment to fail. The trees can be uprooted during a storm which could cause considerable damage to the dam.

b. Adequacy of Information

The conclusions presented in this report are based upon field measurements, limited design drawings, past performance and the present condition of the dam. Information on the operation and maintenance of the dam were not available.

Seepage and stability analyses comparable to the requirements of the "Recommended Guidelines for Safety Inspection of Dams" were also not available which is considered a deficiency.

c. Urgency

The remedial measures recommended in Paragraph 7.2 should be accomplished within a reasonable period of time. The items recommended in paragraph 7.2a should be pursued on a high priority basis.

d. Necessity for Phase II Inspection

Based upon results of the Phase I inspection, and if the remedial measures recommended in Paragraph 7.2 are undertaken, a Phase II inspection is not felt to be necessary.

7.2 Remedial Measures

a. Alternatives

There are several general options which may be considered to reduce the possibility of the dam failure or to diminish the harmful consequences of such a failure. Some of these options are:

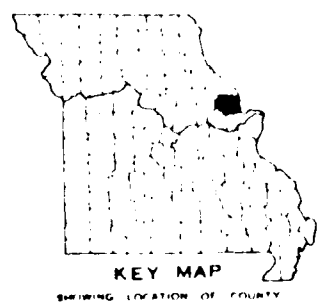
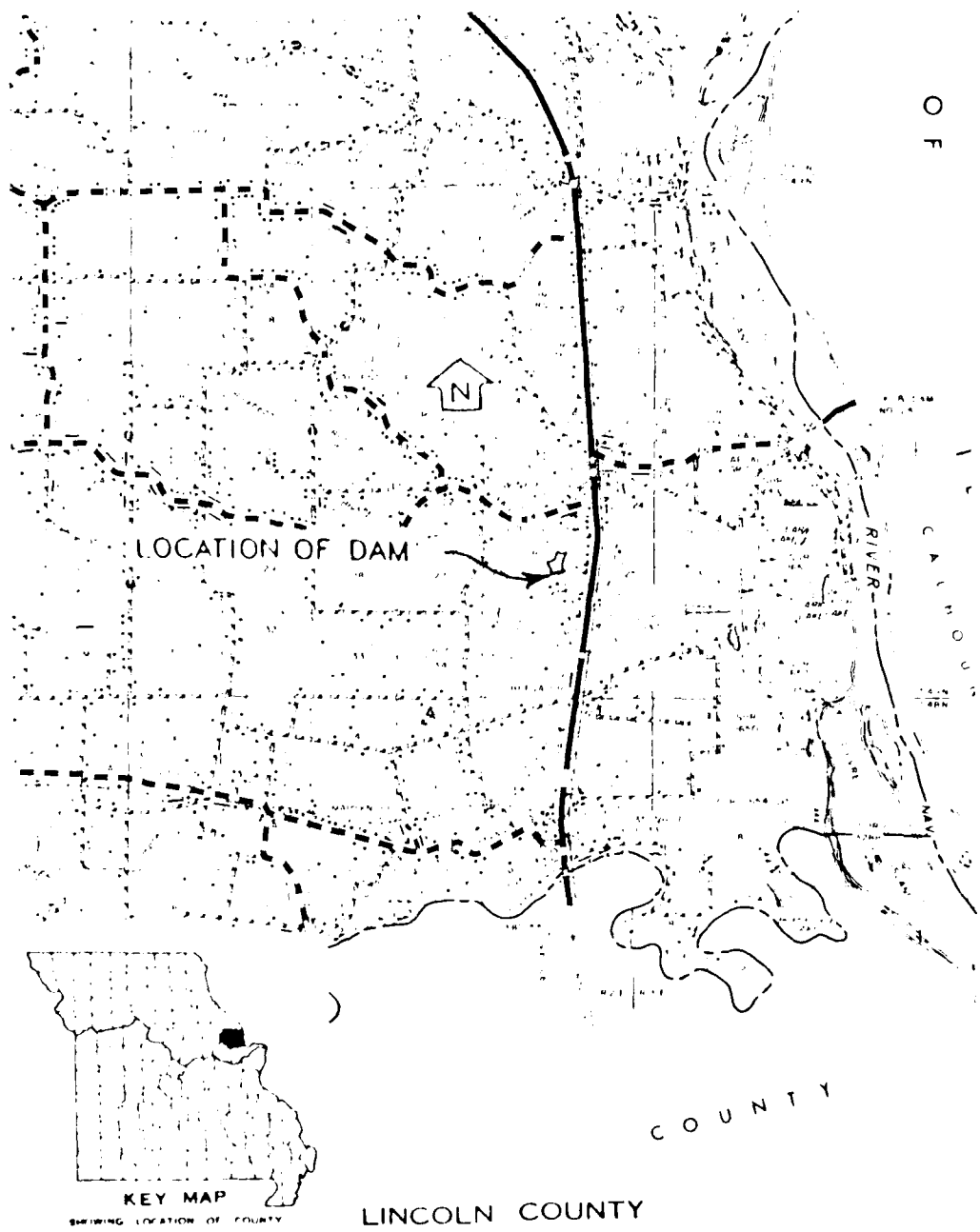
1. Increase spillway capacity to pass the probable maximum flood without overtopping the dam.
2. Provide a highly reliable flood warning system (generally does not prevent damage but avoids loss of life).

b. O & M Procedures

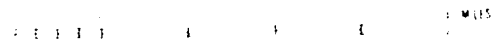
1. Grazing livestock should be prevented access to the embankment. The damage caused by the livestock should be properly repaired and adequately protected from further damage.
2. The erosion gulleys on the left abutment and upstream of the emergency spillway should be back-filled with a suitable material, properly compacted and protected from further erosion.
3. The minor erosion on the upstream slope due to wave action should be monitored and corrective measures taken when deemed necessary.
4. The small saplings on the upstream slope near the shoreline should be cut and the root systems treated to prevent further growth.
5. The emergency spillway crest should be repaired to the extent that it is in as good and stable a condition as the channel portion of the spillway.
6. Once livestock are prevented from trampling about the downstream slope in the vicinity of the principal spillway outlet, grasses could resume growth; however, this condition should be periodically checked and remedied as required to prevent serious erosion from occurring.

7. The principal spillway inlet approachway area should be cleaned of dead grass, etc., and periodically checked for accumulations of miscellaneous brush and rubbish which could reduce spillway capacity.
8. Seepage and stability analyses should be performed by a professional engineer experienced in the design and construction of earth dams.
9. The owner should initiate the following programs:
 - (a) Periodic inspection of the dam by a professional engineer experienced in the design and construction of earthen dams.
 - (b) Set up a maintenance schedule and log all visits to the dam for operation, repairs and maintenance.

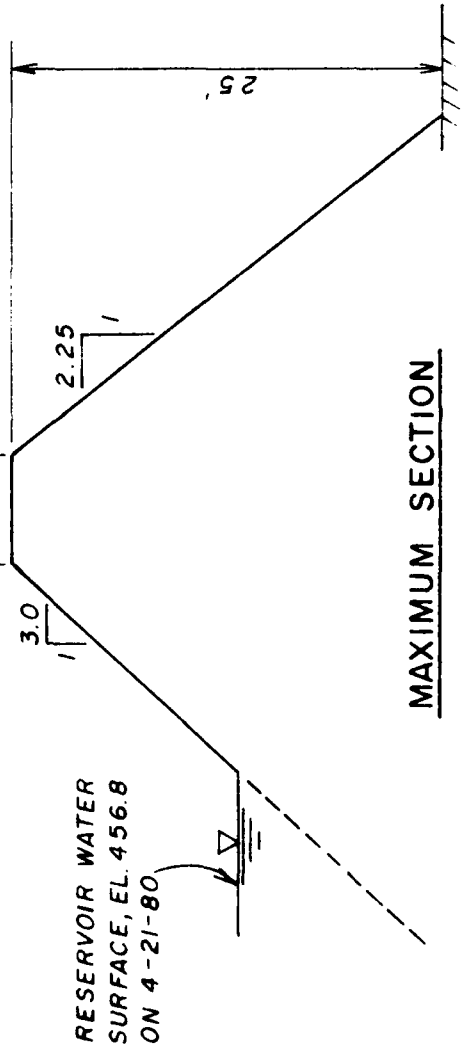
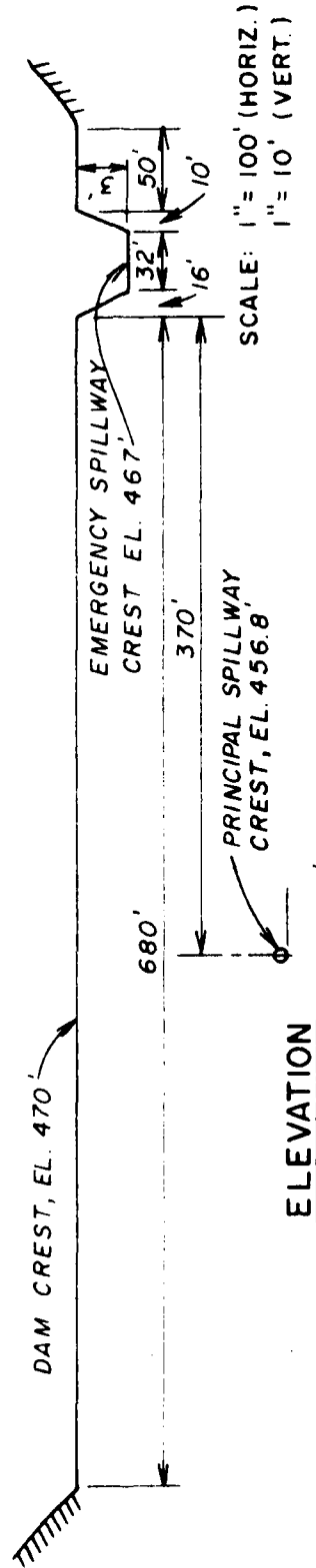
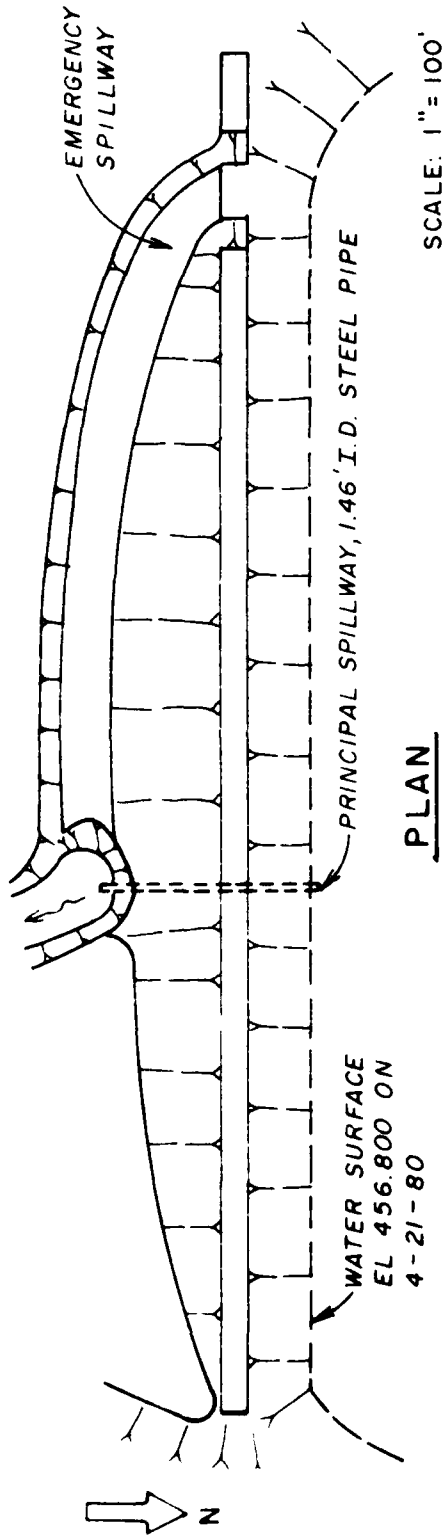
PLATES



SCALE



LOCATION MAP - WESTHOFF DAM
MO. III40



WESTHOFF DAM (MO. 11140)
PLAN, ELEVATION AND SECTION

DESIGN OF DETENTION STORAGE STRUCTURE
 AT SPILLWAY INLET SPILLWAY - CONVEY INLET SPILLWAY

Location LEONARD WESTHOFF LA Location LINE 1
 Design by 2000 Date 6-7-61 Checked by A. J. H. Date _____
 Draft by 368 ac. Drainage x storage = _____ x _____ = _____

WATERED CONDITIONS AND FACTORS

Location _____ L = 1.5
 Infiltration (above) (average) (below) _____ I = 2.1
 Topography (above) (average slope) _____ I = 2.73
 Drainage area (ac.) _____ S = 1.1
 Cover (above) (average) _____ V = 0.1
 Control (above) _____ C = 1.0
 Slope (above) _____ P = 1.0

PLAN OF RUNOFF AND VOLUME OF RUNOFF

Runoff (ac.) 0.73 $Q_{10} = \underline{531}$ c.f.s.
 Total runoff (ac.) 0.73
 Total runoff (ac.) 0.73 $Q_p = \underline{531}$ c.f.s. = 531 c.f.s.
 Runoff (ac.) 0.104 ac.ft./ac. (Table 1, 1519)
 Total runoff (ac.) 0.104 (drainage area) / (rate of volume of runoff) X L =
2.104 ac.ft. X 1.0 = 38.3 ac.ft.
 Total runoff (ac.) 0.174 ac.ft./ac.
 Total runoff (ac.) 0.174 X 531 c.f.s. = 715 c.f.s.
 Total runoff (ac.) 0.174 ac.ft./ac.
 Total runoff (ac.) 0.174 X 0.174 ac.ft./ac. X 1.0 = 64 ac.ft.

File _____
 plan in computer's or landowner's folder in _____

EMERGENCY SPILLWAY DESIGN

PLATE 4

Available storage at station = 36.7 ac.ft. $V_s = 36.7$ ac.ft. (See map)

$V_s/V_r = 36.7$ ac.ft. / 38.3 ac.ft. = 0.96. $Q_{op}/Q_{ip} = 0.96$ (Table 2, 1519)

$Q_{oe} = Q_{ip} \times 0.96 = 53.1$ c.f.s. $\times 0.02 = 10.6$ c.f.s.

Conduit:

Type 51P Length = 10.5 ft. Total head on conduit = 2.3 ft.

Diameter = 18 in. Discharge capacity = 26 c.f.s. (1520)

Minimum entrance head = 2.3 ft. (1510 or 1511) $DPA = 0.22 \times 1.8 = 0.396$

Riser: **

Type 2A Height = 1.0 ft. Diameter = 18 in. (1511)

EMERGENCY SPILLWAY DESIGN

Control Section:

Depth of flow = 2.0 ft. V_s at this depth = 48.1 ac. ft. (See map)

$V_s/V_r = 48.1$ ac.ft. / 64 ac.ft. = 0.75

$Q_{op}/Q_i = 0.75$ c.f.s. / 776 c.f.s. = 0.03 $Q_{oe}/Q_i = 0.19$ (Table 3, 1519)

$Q_{oe} = Q_i \times 0.19 = 776$ c.f.s. $\times 0.19 = 148.4$ c.f.s.

Width = 20 ft. Total depth = depth of flow + freeboard = 2 ft. + 1.0 = 3.0 ft. Use 3.0 ft. (Table 4, 1517)

Exit Section:

Slope = 1:1 Quality of vegetation: (fair) (good) (excellent) *

(Less) (More) * erusive soils. Permissible velocity = 10 f.p.s. (1517)

Depth = 3.0 ft. Design velocity = 10 f.p.s. Width = 20 ft. (1517 or 1505)

Use width of 20 ft.

ANCHORING COLLARS

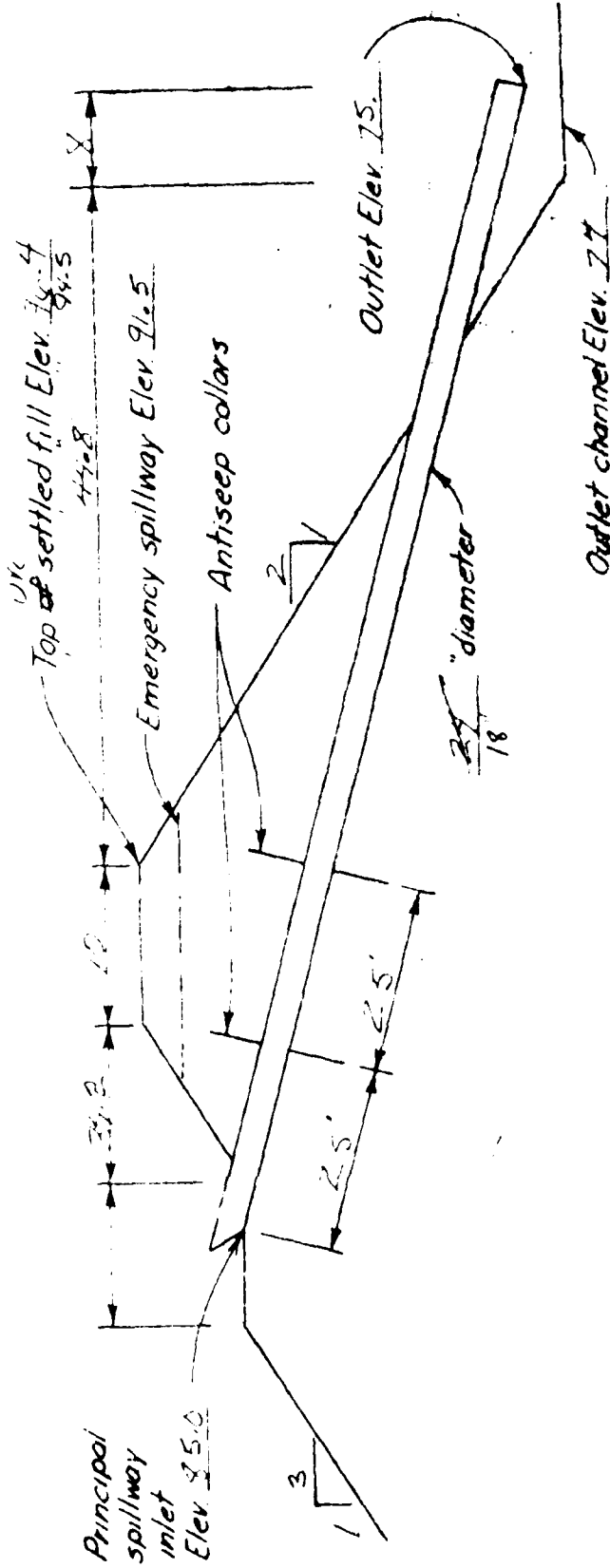
Length of saturated zone = 84 ft. Collar addition = 4 ft. (1515)

Number of collars = $(1 \times 0.1) / V = (84 \times 0.1) / 4 = 2.1$. Use 2 collars.

5.5' x 5.5'

* Mark out these items for design only.

** Applies only to Deep Jet Spillways.



SECTION ALONG & PRINCIPAL SPILLWAY

Not to Scale

ESTIMATED QUANTITIES		UNIT		ITEM	
104	ft.	84" dia	Welded	Steel	Pipe
2	ea	72" x 72"	Antiseep	Collars	
1	ea	Canopy	inlet	see detail	Fig.
1	ea	24" dia	Pipe		
8920	cuyd	Earth	Fill		

UNITED STATES DEPARTMENT OF AGRICULTURE
SOIL CONSERVATION SERVICE

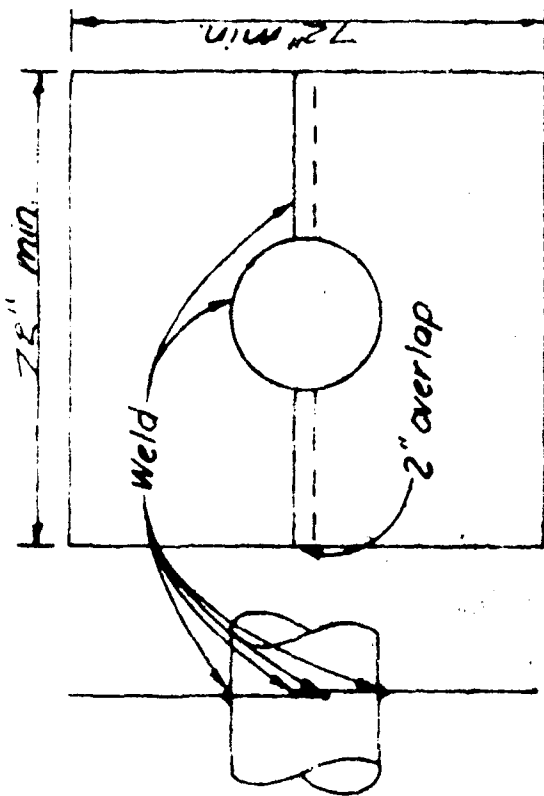
HOOD INLET SPILLWAY

Landowner Leonard Westover
County, Missouri
Designed by [Signature] Date 6-77
Checked by [Signature] Date
Approved by [Signature] Date
Sheet 1 of 3

5.1-27.901

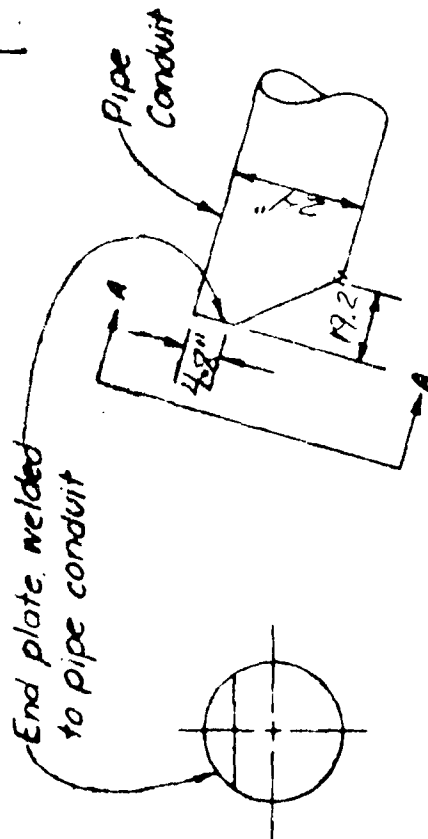
Notes

- 1 All welds shall be watertight.
- 2 All pipe and steel plates shall have minimum thickness of 10 ga or 0.135 inches



ANTI-SEEP COLLAR

Not to Scale



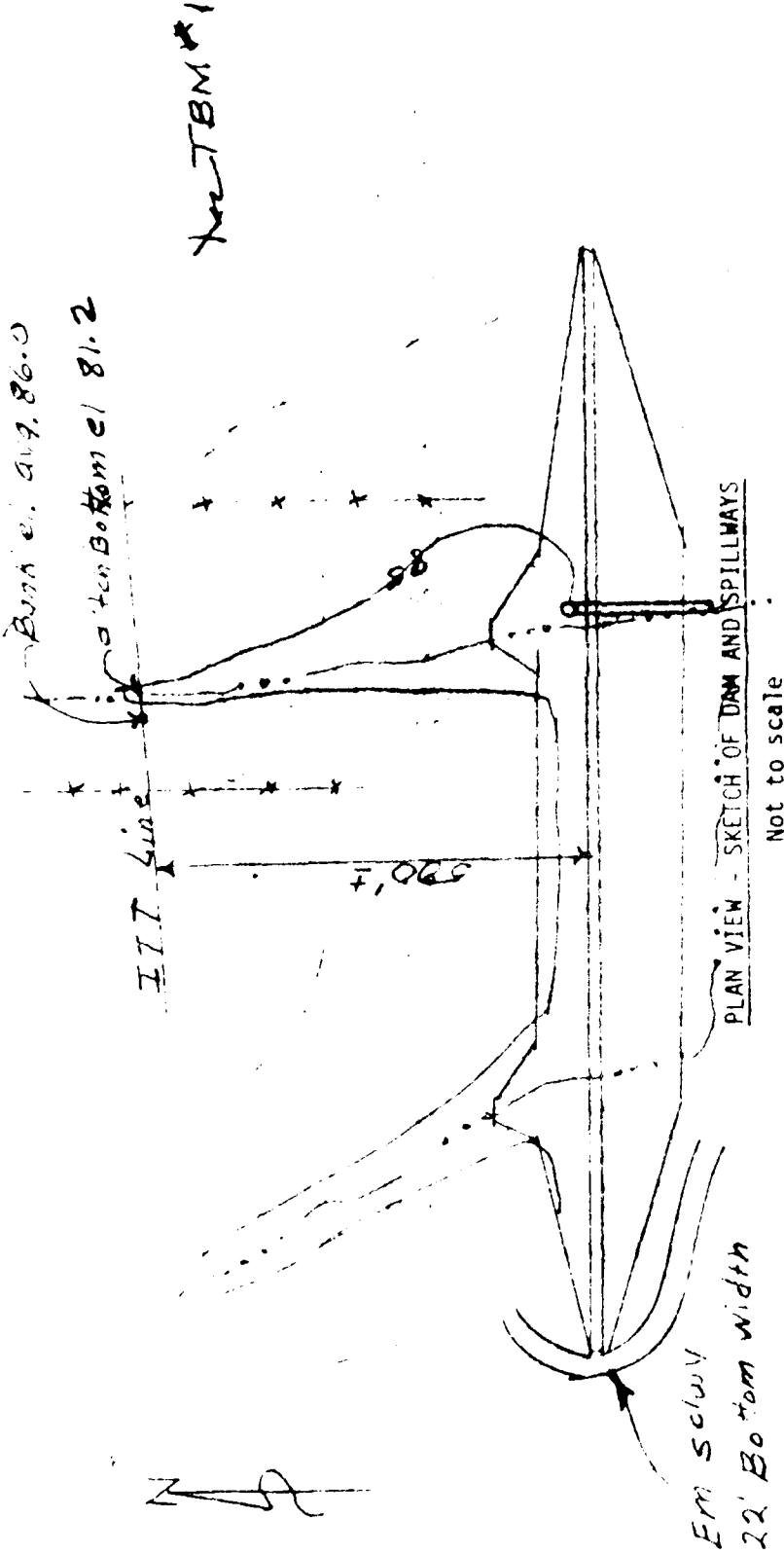
SECTION A-A

SECTION ALONG C OF INLET

INLET SECTION

COOPERATOR: <u>Mr. J. H. J. J.</u>		DATE: <u>7 DEC 1954</u>	
COOPERATING WITH: <u>L. A. G. L. CO. 5000</u>		COUNTY: <u>L. A. G. L. CO.</u> STATE: <u>MD.</u>	
SURVEYED BY: <u>L. A. G. L. CO.</u>		DATE: <u>6-15-54</u>	
DETAILS FOR WELDED STEEL CANOPY INLET SPILLWAY			
U. S. DEPARTMENT OF AGRICULTURE SOIL CONSERVATION SERVICE			
Drawn by: <u>W. J. J.</u>	Checked by: <u>W. J. J.</u>	Date: <u>6-15-54</u>	Project No: <u>51-28, 454</u>
Scale: <u>1" = 1'-0"</u>	Sheet No: <u>1</u>	Total Sheets: <u>1</u>	Order No: <u>51-28, 454</u>

MO-ENG-2177 (10-10-13)



UNITED STATES DEPARTMENT OF AGRICULTURE
SOIL CONSERVATION SERVICE

Approximate surface area 4.9 acres.
Permanent pool elevation 85.0.
TBM No. 1 Elev. 100 Description 16" Nail at Base
of 48" Elm Tree in field - approx. 200'
N. of Farm Road and approx. 200'
East of ditch.
TBM No. _____ Elev. _____ Description _____

Landowner Leonard Westhoff Jr.
County Missouri
Designed by L. Lincoln Date 12-28
Checked by _____ Date _____
Approved by _____ Date _____
Sheet 3 of 3

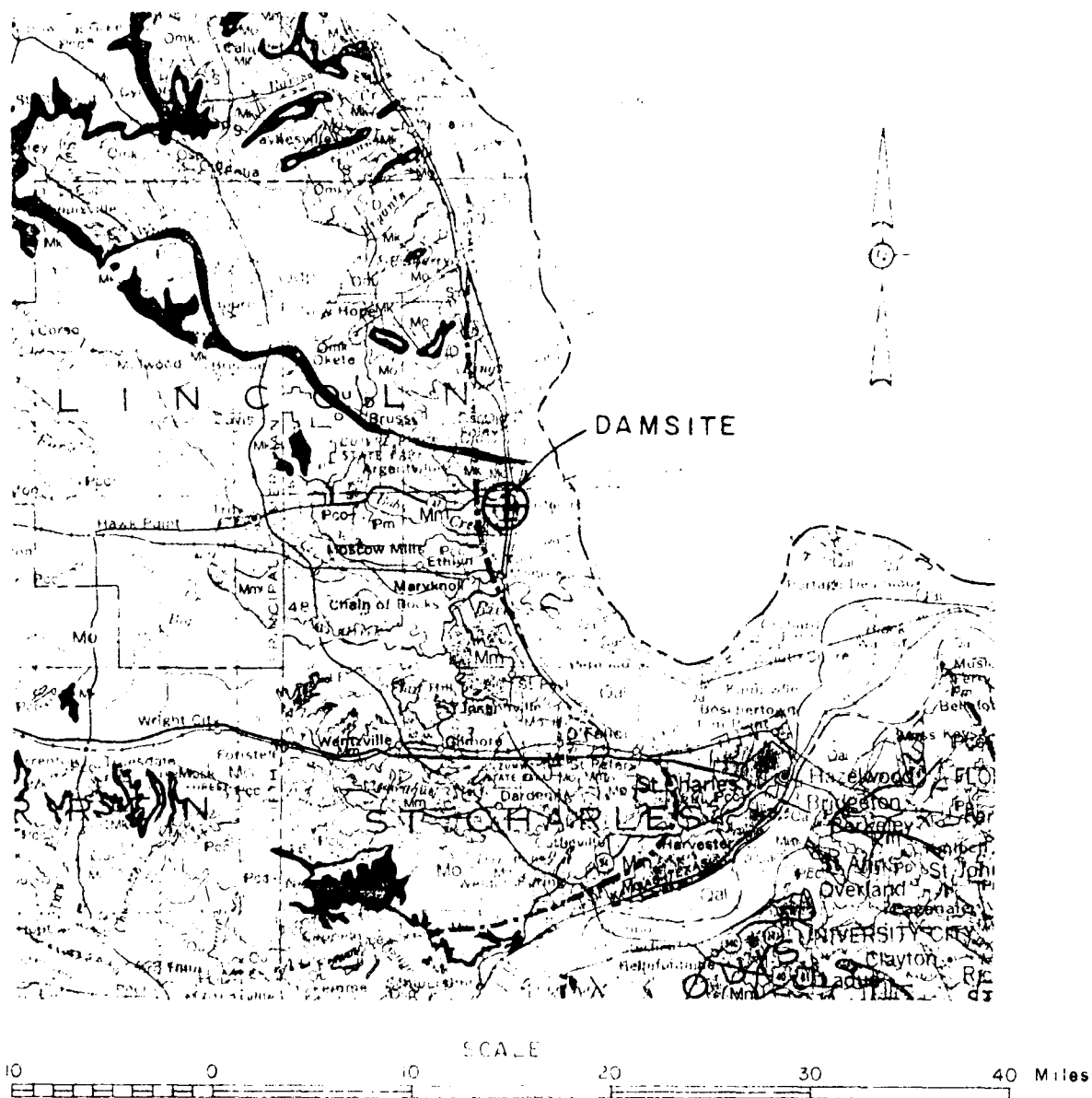
5.1-28,922

1-24-58 (M-28-922)

EARTH WORK COMPUTATION SHEET

Upstream Berm: Width _____ Elev. _____; Downstream Berm: Width _____ Elev. _____

Allow _____ % for Settlement.	
Side Spillway/Fill (Including Diker)	
Backfill Core Trench Exc.	8700
Backfill Structure Exc.	
Backfill Stripping	
Class _____ Total	



⊕ LOCATION OF DAM

NOTE LEGEND OF THIS DAM IS ON PLATE

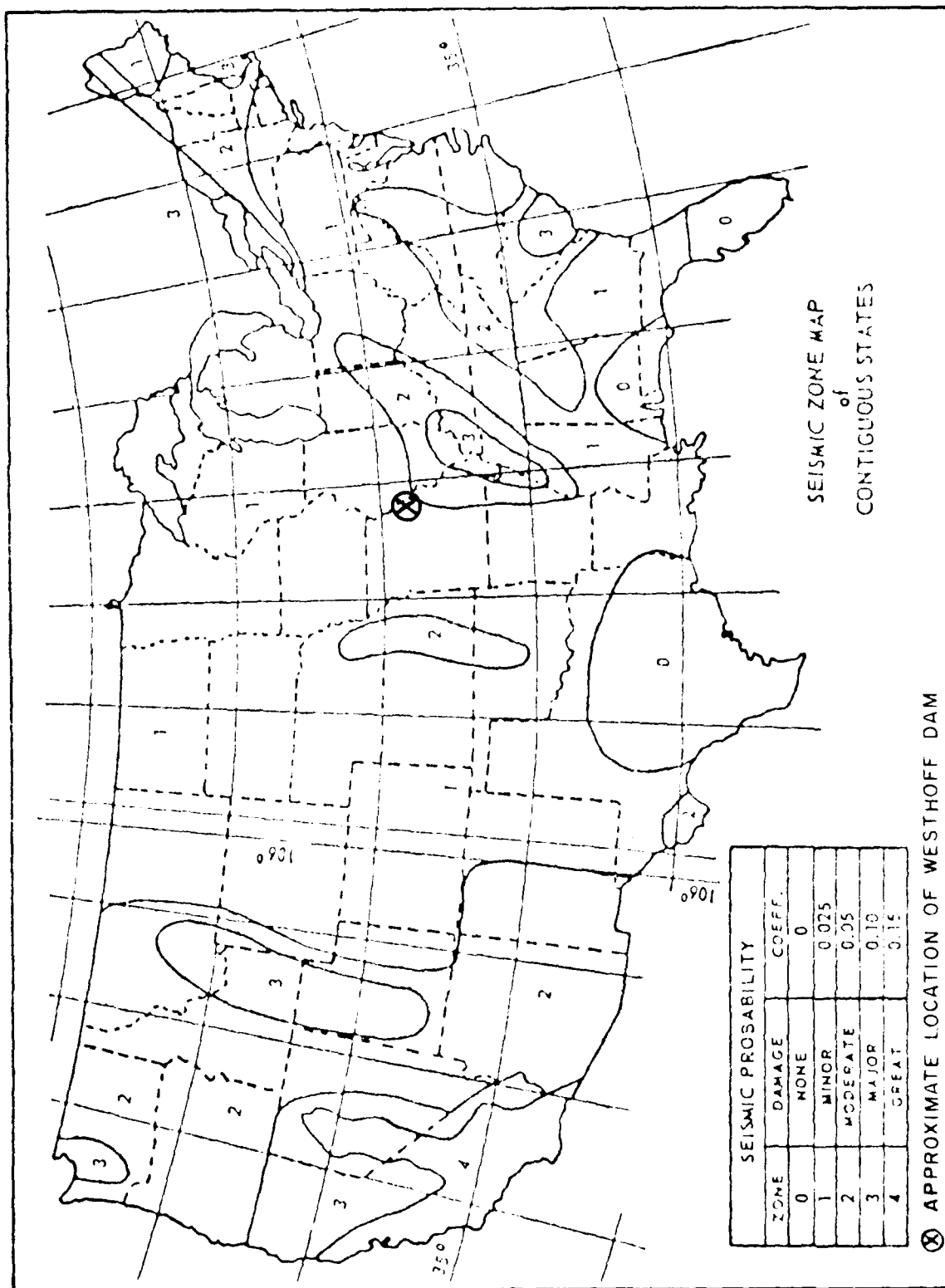
REFERENCE

GEOLOGIC MAP OF MISSOURI
DEPARTMENT OF NATURAL RESOURCES
MISSOURI GEOLOGICAL SURVEY
KENNETH H. ANDERSON, 1979

REGIONAL GEOLOGICAL MAP OF WESTHOFF DAM

LEGEND

<u>PERIOD</u>	<u>SYMBOL</u>	<u>DESCRIPTION</u>
QUATERNARY	Qal	ALLUVIUM: SAND, SILT, GRAVEL
PENNSYLVANIAN	{ Pm	MARMATON GROUP: CYCLIC DEPOSITS OF SHALE, LIMESTONE AND SANDSTONE
	{ Pcc	CHEROKEE GROUP: CYCLIC DEPOSITS OF SHALE, LIMESTONE AND SANDSTONE
MISSISSIPPIAN	{ Mm	ST. LOUIS FORMATION: LIMESTONE INTERBEDDED WITH SHALE
	{ Mm	SALEM FORMATION: LIMESTONE INTERBEDDED WITH SHALE AND SILTSTONE
	{ Mm	WARSAW FORMATION: ARGILLACEOUS LIMESTONE AND CALCAREOUS SHALE
	{ Mo	KEOKUK-BURLINGTON FORMATION: CHERTY GRAYISH BROWN SANDY LIMESTONE
	{ Mk	NORTHVIEW-COMPTON AND BACHELOR FORMATION
DEVONIAN	D	CHATTANOOGA SHALE, SYLAMORE SANDSTONE
ORDOVICIAN	{ Omk	MAQUOKETA SHALE, KIMMSWICK LIMESTONE
	{ Odp	DECORAH FORMATION: GREEN TO GRAY CALCAREOUS SHALE WITH THIN FOSSILIFEROUS LIMESTONE



APPENDIX A
PHOTOGRAPHS

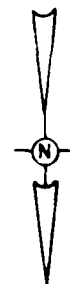
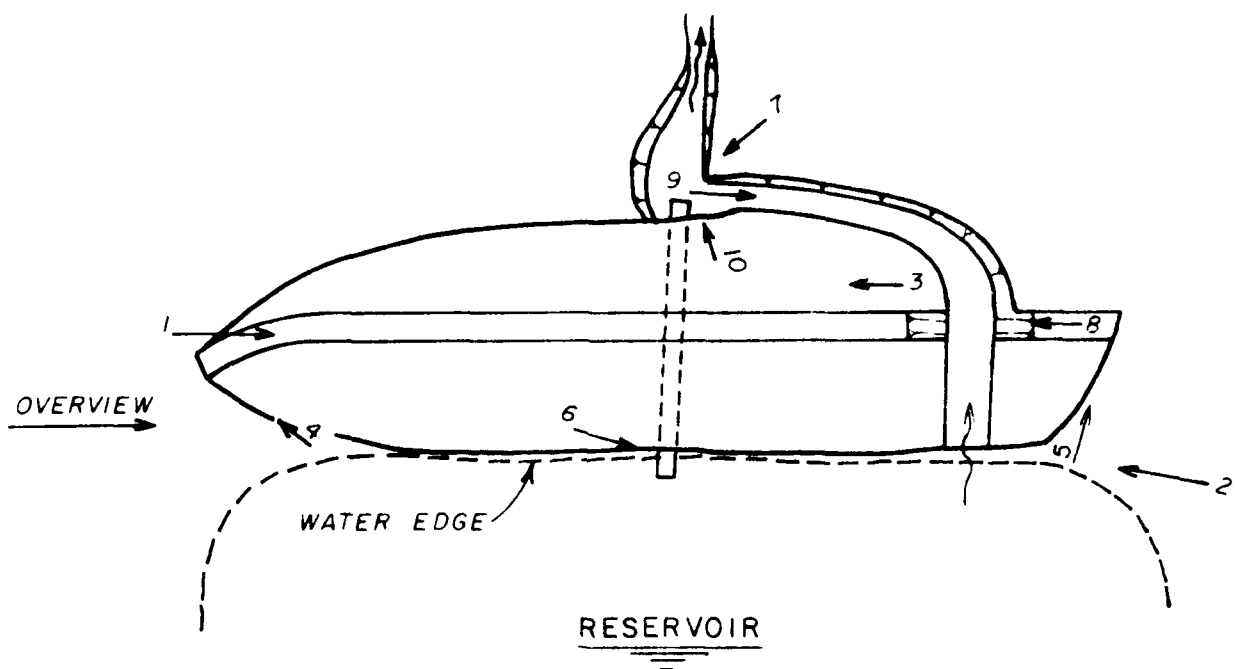


PHOTO INDEX
FOR
WESTHOFF DAM

Westhoff Dam

Photographs

- Photo 1 - Top of dam, showing grass cover protection and vehicular tracks worn into dam surface.
- Photo 2 - Upstream slope of dam showing adequate grass cover and rough edges of berm from dead grass accumulation.
- Photo 3 - Downstream slope of dam showing grass cover, livestock trails and emergency spillway discharge channel, looking downstream.
- Photo 4 - Erosion gulley, upstream left abutment contact area.
- Photo 5 - Erosion gully, upstream right abutment contact area.
- Photo 6 - Principal spillway inlet showing nearby brush and plant growth.
- Photo 7 - Principal spillway outlet showing sparseness of grass cover protection and hoof marks of thirsty livestock.
- Photo 8 - View of emergency spillway inlet crest showing soft area, stock trail, and emergency spillway discharge channel along toe of embankment.
- Photo 9 - View of emergency spillway discharge channel (looking upstream) along toe of embankment. (Erosion bottom right.)
- Photo 10 - View of intersection of emergency discharge channel (right foreground) and outlet pipe for principal spillway, and downstream channel brush, etc.

Westhoff Lake Dam



Photo 1



Photo 2

Westhoff Lake Dam

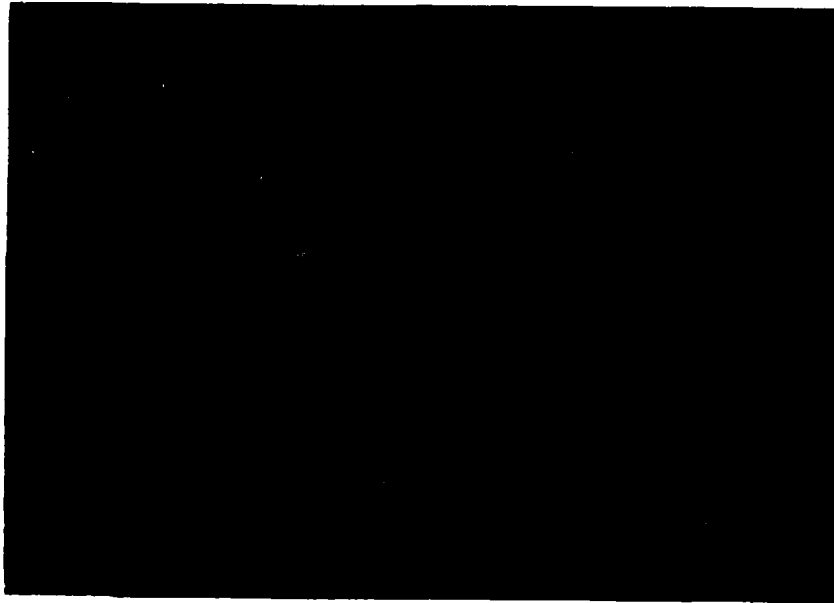


Photo 3

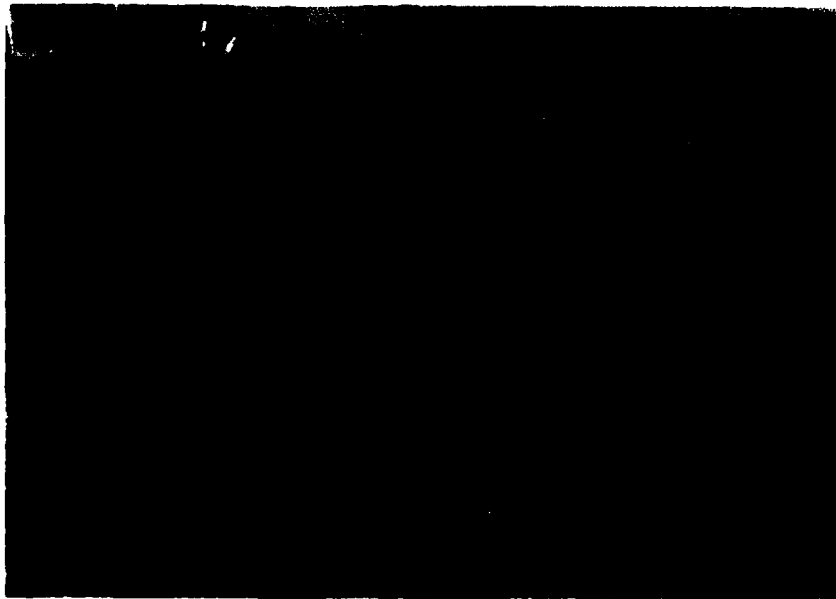


Photo 4

Westhoff Lake Dam



Photo 5



Photo 6

Westhoff Lake Dam

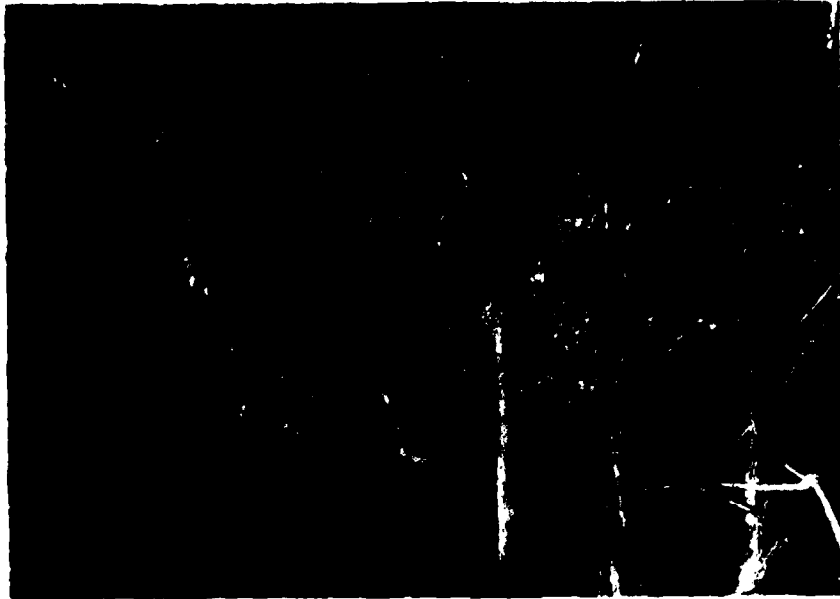


Photo 7

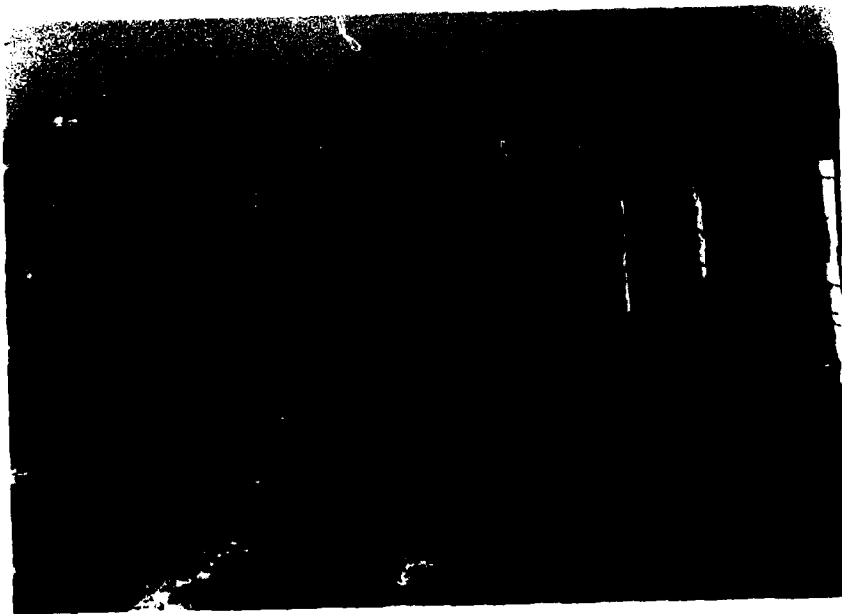


Photo 8

Westhoff Lake Dam



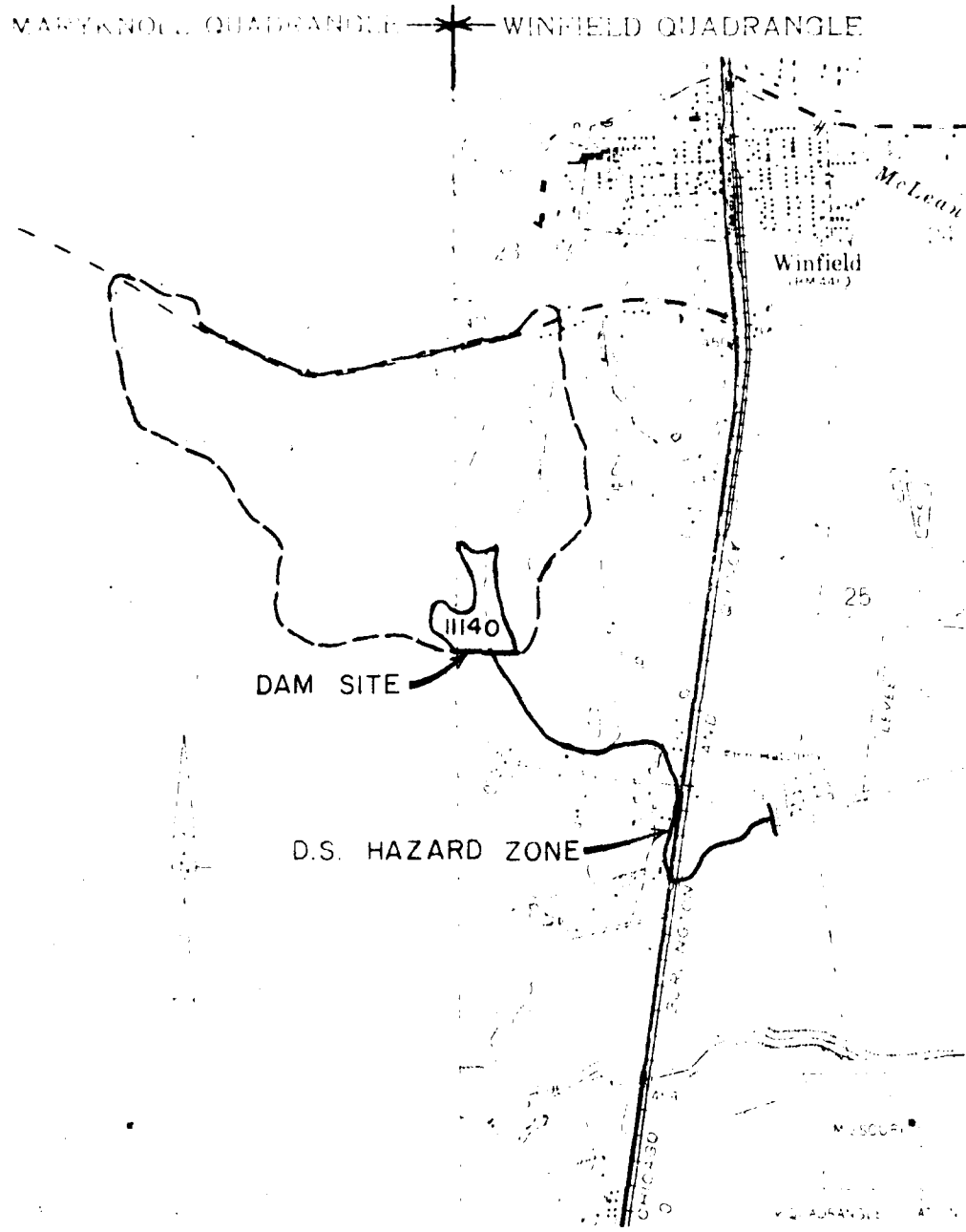
Photo 9



Photo 10

APPENDIX B
HYDROLOGIC AND HYDRAULIC COMPUTATIONS

PLATE I, APPENDIX B



DRAINAGE BOUNDARY - - - - -

WESTHOFF DAM MO1140
DRAINAGE BASIN

B-2

PRC ENGINEERING CONSULTANTS, INC.

DAM SAFETY INSPECTION - MISSOURI

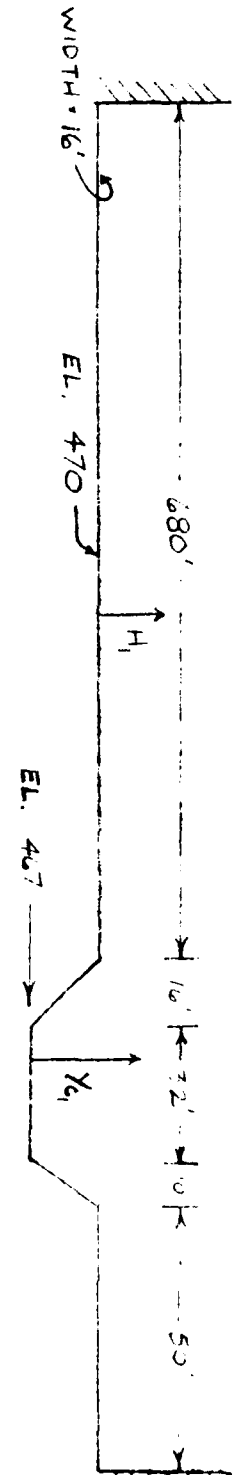
VESTHOFF DAM (MO 11142)

SPILLWAY AND OVERTOP RATING CURVE

SHEET NO. 1 OF 3

JOB NO. 1263

BY JFK DATE 4/29/80



Y_{C1}	A_{C1}	T_{C1}	$V_{C1} \sqrt{\frac{A}{T}}$	$V_{C1}^2/2g$	$Q_{C1} = A_{C1} V_{C1}$	$U/S \quad W.S. = \frac{Y_{C1} + V_{C1}^2/2g}{467.0}$	C_1^*	L_1	H_1	$Q_1 = C_1 L_1 H_1^{3/2}$	$Q_T = Q_{C1} + Q_1$
0	0	0	0	0	0	467	-	-	-	-	0
1	36.3	40.7	5.4	0.45	196.0	468.45	-	-	-	-	196
2	81.3	49.3	7.3	0.82	593.5	469.82	-	-	-	-	594
2.5	107.1	53.7	8.0	1.0	856.8	470.5	270	730	0.5	230.9	1554
3	135.	58.0	8.7	1.16	1174.5	471.16	264	730	1.16	2407.8	3582
4	193	58.0	10.3	1.66	1987.9	472.66	263	730	2.66	8329.2	10317
5	251	58.0	11.8	2.16	2961.8	474.16	263	730	4.16	16289.9	19252
6	309	58.0	13.1	2.66	4047.9	475.66	263	730	5.66	25811.5	29900

* Values of C_1 are taken from Table S-3, Handbook of Hydraulics by E.F. Brater & H.W. King, 3rd ed.

20 ENGINEERING CONSULTANTS, INC.

DAM SAFETY TREATMENT, MISSOURI - 1980

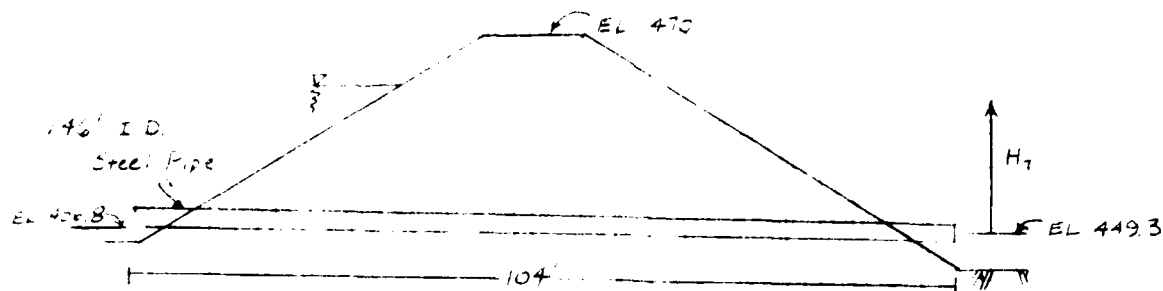
WEETHOFF DAM (MO 1145)

CONCRETE STILL-WAY RATING CURVE

PROJECT 2 3

NO. 1263

DATE 5/30/80



$$H_T = (K_{exit} + K_{entrance} + K_{pipe} L) \frac{V^2}{2g}$$

$$K_{exit} = 1.0$$

$$K_{entrance} = 1.0 \text{ (Hooded Inlet)}$$

$$K_{pipe} = 5087 \frac{n^2}{d_c^{4/3}}, \text{ where } n = 0.010 \text{ \& } d_c = 17.5"$$

$$= 0.0112$$

$$H_T = (1.0 + 1.0 + 0.0112 \cdot 104) \frac{V^2}{2g}$$

$$H_T = 3.165 \frac{V^2}{2g}$$

$$V = 4.51 \sqrt{H_T}$$

$$Q = VA = \pi \frac{(1.46)^2}{4} V$$

$$Q = 7.54 \sqrt{H_T}$$

101-4

PRC ENGINEERING CONSULTANTS, INC.

DAM SAFETY INSPECTION / MISSOURI

SHEET NO. 3 OF 3

COLUMBIA RIVER (see 1000)

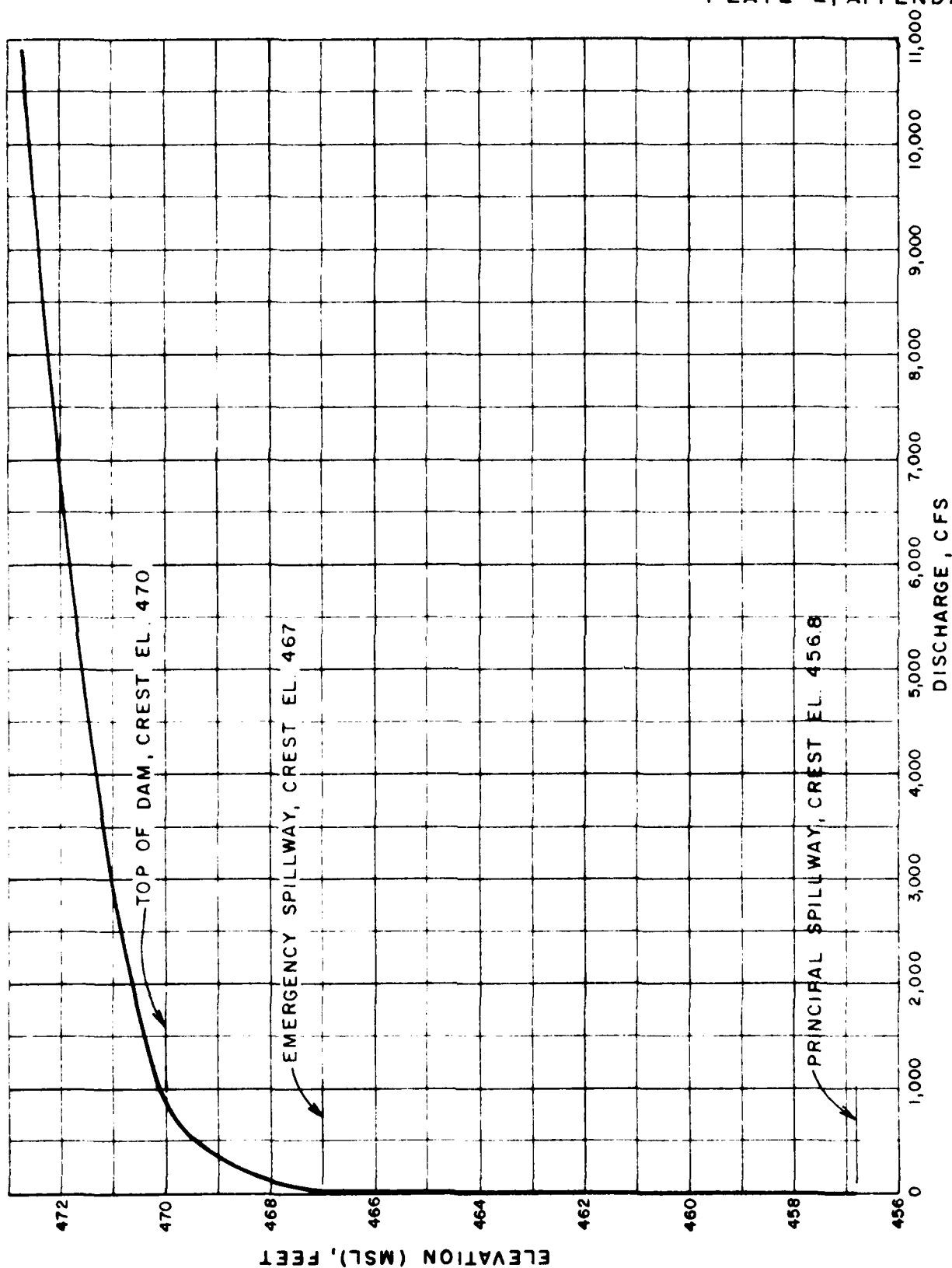
JOB NO. 1265

COMBINED FLOODING CURVES

BY D.C. DATE 6-1-60

Datum = 449.3

Reservoir Water Surface Elev.	H_f	Principal Spillway Discharge $Q = 754 \sqrt{H_f}$	Emergency Spillway Discharge	Discharge Over Top of Dam	Combined Discharge
450.0	-	0	0	0	0
451.0	10.7	2460	0	0	2460
452.0	13.7	2828	0	0	2828
453.0	17.7	3172	0	0	3172
454.0	19.2	3264	1960	0	329
455.0	20.5	3414	5935	0	628
456.0	21.2	3472	7567	696.9	1587
457.0	21.9	3529	11115	2467.8	2612
458.0	22.4	3647	13529	2835.2	16354
459.0	24.7	3762	23212	16289.9	17279
460.0	26.4	3974	40471	25852.5	17929



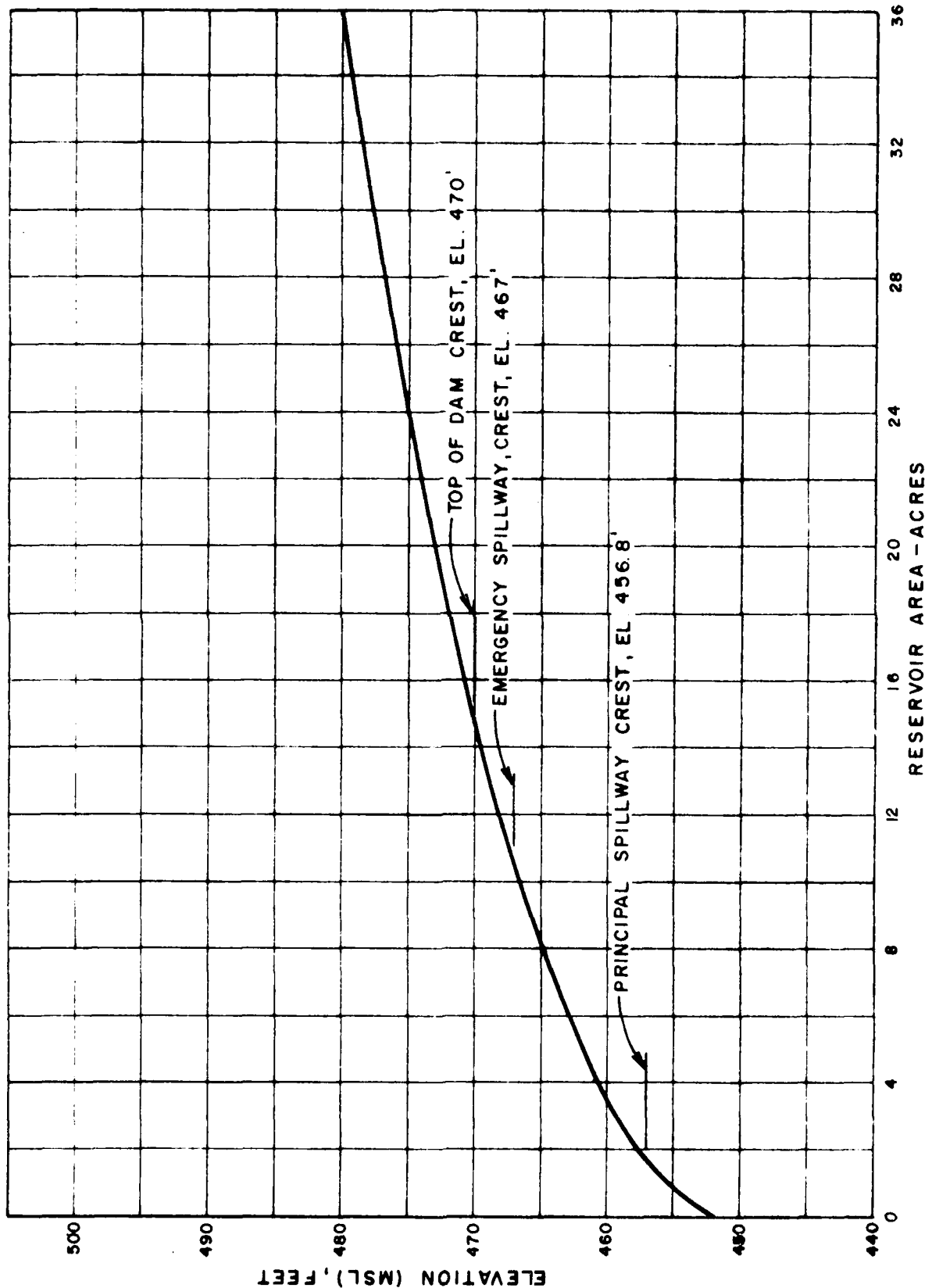
WESTHOFF DAM (MO. 11140)
 SPILLWAY & OVERTOP RATING CURVE
 2-2

FORM 4

PRC ENGINEERING CONSULTANTS, INC.

DAM SAFETY INSPECTION - MISSOURI SHEET NO. 1 OF 1
 DAM NAME: LVESTHOFF DAM ID NO.: MO 11143 JOB NO. 1263
 RESERVOIR ELEVATION AREA DATA BY JFK DATE 4/21/80

ELEV. (M.S.L.) (Fe)	RESERVOIR SURFACE AREA (Acres)	REMARKS
452	0	Estimated Streambed at Dam
456.8	1.9	Principal Spillway Crest
460	3.5	Area Measured on USGS Map
465	9.0	Interpolated from Graph
467	10.5	Emergency Spillway Crest
470	14.5	Top of Dam
475	24.0	Interpolated from Graph
480	36.0	Area Measured on USGS Map



WESTHOFF DAM (MO. 11140)
 RESERVOIR ELEVATION-AREA CURVE
 2-9

PRC ENGINEERING CONSULTANTS, INC.

DAM SAFETY INSPECTION / MISSOURI

SHEET NO. 1 OF 1

DAM NAME: WESTHOFF DAM (MO 11140)

JOB NO. 1263

UNIT HYDROGRAPH PARAMETERS

BY JFK DATE 5/5/80

- 1) DRAINAGE AREA, $A = 0.58$ sq. mi. = (368 acres)
- 2) LENGTH OF STREAM, $L = (3 \text{ " } \times 2000' = 6000') = 1.14$ mi.
- 3) ELEVATION AT DRAINAGE DIVIDE ALONG THE LONGEST STREAM,
 $H_1 = 565$
- 4) ELEVATION OF RESERVOIR AT SPILLWAY CREST, $H_2 = 456.8$
- 5) ELEVATION OF CHANNEL BED AT $0.85L$, $E_{85} = 540$
- 6) ELEVATION OF CHANNEL BED AT $0.10L$, $E_{10} = 475$
- 7) AVERAGE SLOPE OF THE CHANNEL, $S_{AVG} = (E_{85} - E_{10}) / 0.75L = 540 - 475 / 4500 = 0.015$
- 8) TIME OF CONCENTRATION:
 - A) BY KIRPICH'S EQUATION,

$$t_c = [(11.9 \times L^3) / (H_1 - H_2)]^{0.385} = [11.9 \times (1.14)^3 / (565 - 456.8)]^{0.385} = 0.50 \text{ hr}$$
 - B) BY VELOCITY ESTIMATE,

$$SLOPE = 0.015 \Rightarrow \text{AVG. VELOCITY} = 2 \text{ fps}$$

$$t_c = L / V = 6000 / (2 \times 3600) = 0.83 \text{ hr}$$
- USE $t_c = 0.50$
- 9) LAG TIME, $t_L = 0.6 t_c = 0.6 \times 0.5 = 0.30$
- 10) UNIT DURATION, $D \leq t_L / 3 = 0.30 / 3 = 0.10$ 4 0.083 hr.
- USE $D = 0.083$
- 11) TIME TO PEAK, $T_p = D/2 + t_L = 0.083/2 + 0.30 = 0.34$
- 12) PEAK DISCHARGE,

$$q_p = (484 \times A) / T_p = 484 \times 0.58 / 0.34 = 826 \text{ cfs}$$

PRC ENGINEERING CONSULTANTS, INC.

DAM LINE ITEM NUMBER / ALLOCATION

SHEET NO. 1 OF 3

DAM NAME: WESTHOFF DAM (MO 11140)

JOB NO. 1422

PROPOSED MAXIMUM FLOOD PROTECTION

BY JFK DATE 5/5/80

DETERMINATION OF PMP

1) Determine drainage area of the basin

$$D.A. = 0.58 \text{ sq. mi.}$$

2) Determine PMP Index Rainfall (for D.A. = 200 sq. mi. & 24 hr. duration)

Location of centroid of basin,

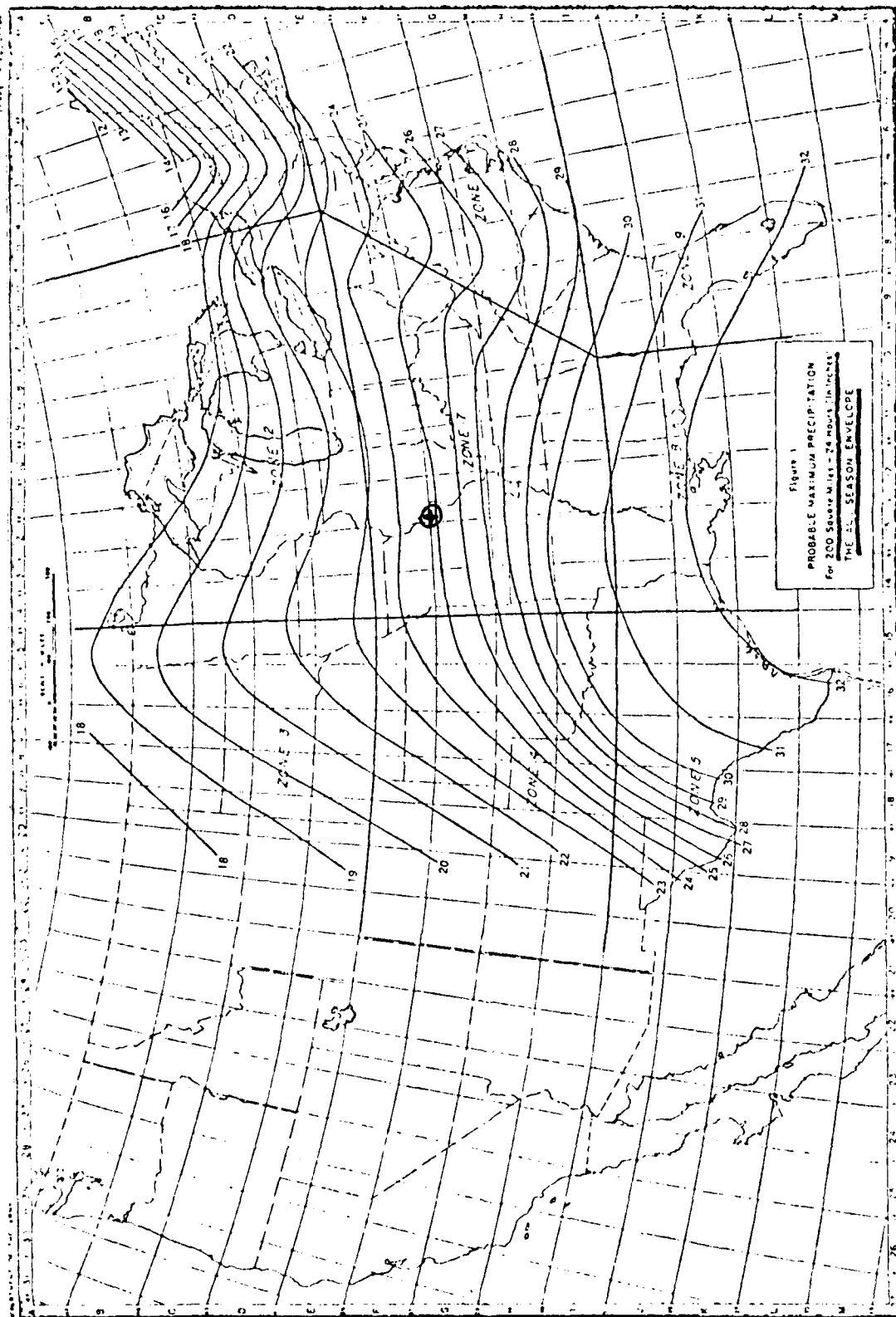
$$\text{Long.} = 90^{\circ} 45' 09'' \quad \text{Lat.} = 38^{\circ} 59' 09''$$

$$\text{PMP} = 24.9'' \quad (\text{from Fig. 1, HMR 33})$$

$$\text{Zone} = 7$$

3) Determine basin rainfall in terms of percentage of PMP Index Rainfall for various durations.
(from Fig. 2, HMR 33)

Duration (Hrs.)	Percent of Index Rainfall (%)	Total Rainfall (Inches)	Rainfall Increments (Inches)	Duration of Increment (Hrs.)
6	100	24.9	24.9	6
12	120	29.9	5.0	6
24	130	32.4	2.5	12



20

B-11

⊕ LOCATION OF CENTROID OF BASIN

WESTHOFF DAM
DETERMINATION OF PMP

2983

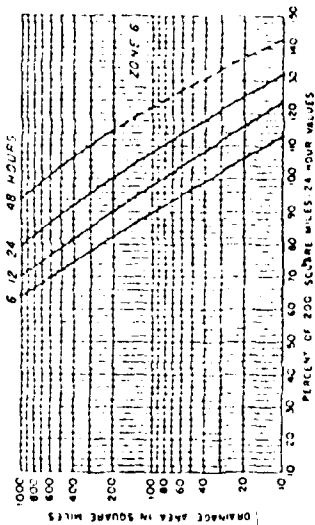
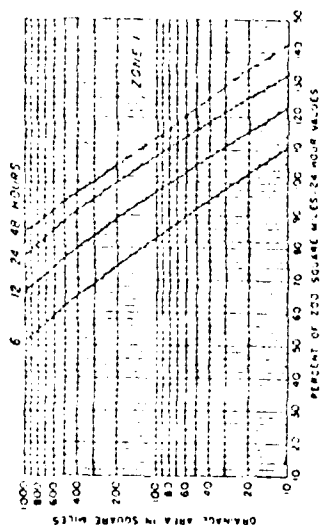
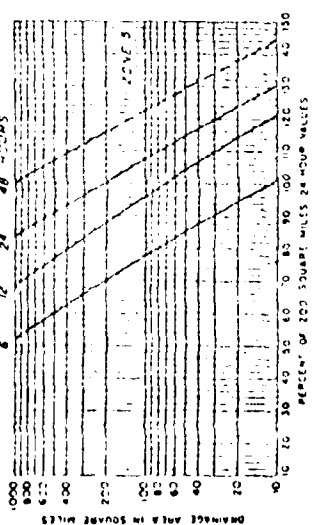
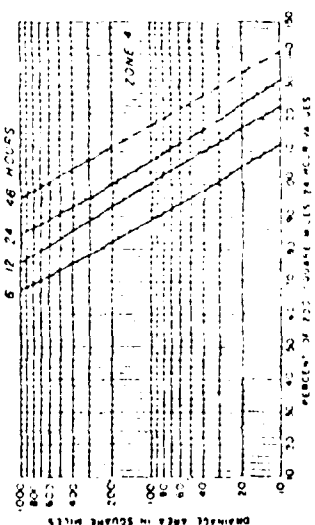
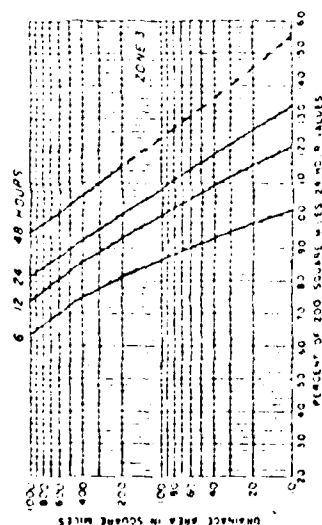
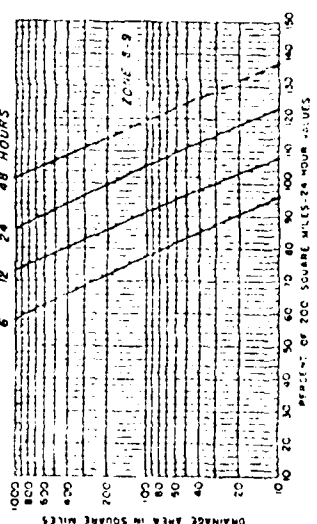
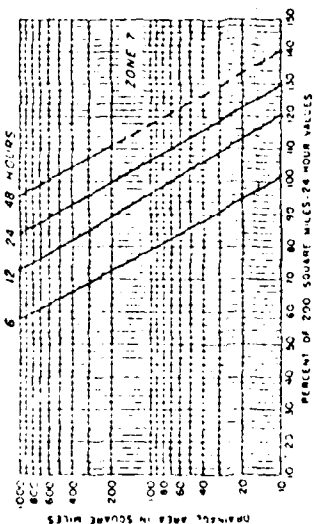
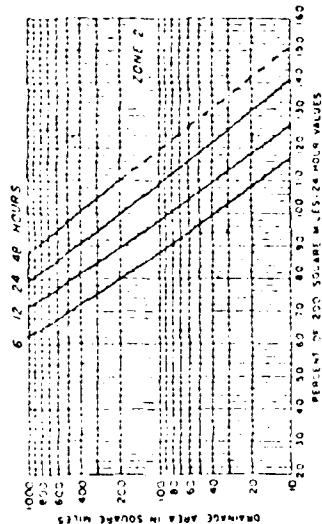


FIGURE 2
SEASONAL VARIATION
DEPTH-AREA-DURATION RELATIONSHIPS
Percentage to be applied to 200 square miles
24 hour probable maximum precipitation values
for: THE ALL SEASON ENVELOPE



THE ENGINEERING CONSULTANTS, INC.

DAM SAFETY INSPECTION / MISSOURI - 1980

SHEET NO. 1 OF 1

DAM NAME: WESTHOFF (MO 11140)

JOB NO. 1263

CURVE NUMBER DETERMINATION

BY JFK

DATE 5/15/80

I) SOIL GROUP

WATERSHED SOILS IN THE BASIN CONSIST OF GROUP

A.
B.
C.
D

GROUP C SOILS SEEM TO PREDOMINATE THE BASIN. THEREFORE,
ASSUME GROUP C SOILS FOR THE ENTIRE WATERSHED
FOR HYDROLOGIC PURPOSES.

II) COVER COMPLEX

ASSUMED LAND USE	ASSUMED HYDROLOGIC CONDITION	PER CENT AREA	CN (AMC II)
ROW CROPS, (S.R.)	POOR	40	88
WOODS	FAIR	40	73
PASTURE OR RANGE	FAIR	20	79

III) CURVE NUMBER

WEIGHTED AVERAGE CN = 80 FOR AMC II

CURVE NUMBER = 91 FOR AMC III

PRC ENGINEERING CONSULTANTS, INC.

DAM SAFETY INSPECTION / MISSOURI

SHEET NO. 1 OF 2

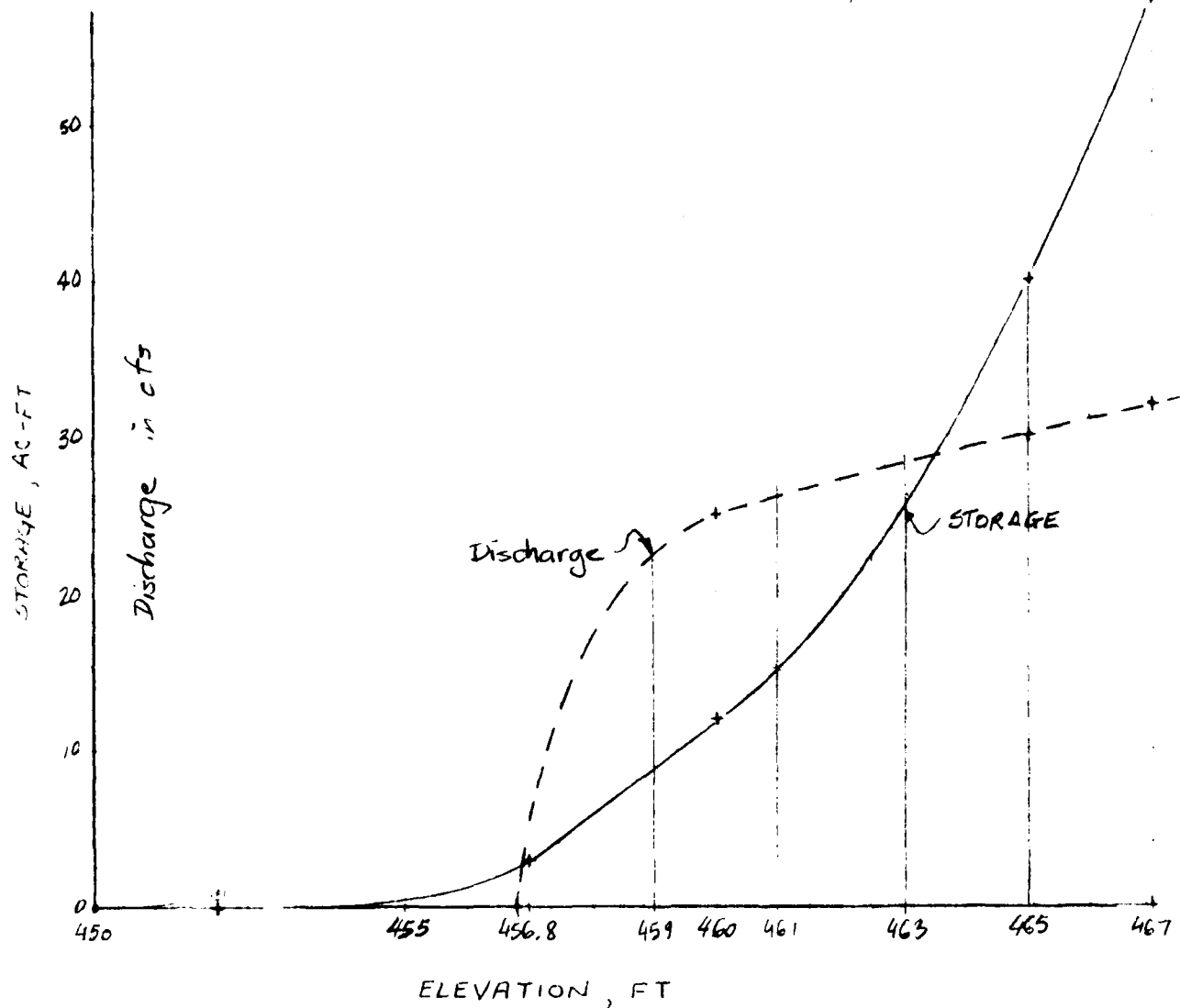
WESTHOFF DAM (MO 11140)

JOB NO. 1263

STARTING W.S. ELEVATION FOR PMF ROUTING

BY JFK DATE 5/6/80

FZ REVISED JUNE 80



1) WSEL = 467 at end of 1/2 PMF routing

From WSEL = 467 to 465,

$$S = 58 - 40 \text{ ac-ft} = 18 \text{ ac-ft}$$

$$\bar{Q} = 31 \text{ cfs}$$

$$\tau = 18 \text{ ac-ft} \times 43560 \frac{\text{ft}^2}{\text{ac}} \times \frac{1.5}{31 \text{ ft}^3} \times \frac{1 \text{ day}}{86400 \text{ s}} = 0.29 \text{ days}$$

PRC ENGINEERING CONSULTANTS, INC.

DAM SAFETY INSPECTION / MISSOURI

SHEET NO. 2 OF 2

WESTHOFF DAM (MO 11140)

JOB NO 1263

STARTING WSEL FOR PMF ROUTING

BY JFK

DATE 5/6/80

II) From WSEL 465 to 463

$$\Delta S = 40 - 26 = 14 \text{ ac-ft}$$

$$\bar{Q} = 29 \text{ cfs}$$

$$t = 14 \text{ ac-ft} \times 43560 \frac{\text{ft}^2}{\text{ac}} \times \frac{1}{29 \text{ ft}^3} \times \frac{\text{day}}{86400 \text{ s}} = 0.24 \text{ days}$$

III) From WSEL 463 to 461

$$\Delta S = 26 - 15 = 11 \text{ ac-ft}$$

$$\bar{Q} = 27 \text{ cfs}$$

$$t = 11 \text{ ac-ft} \times 43560 \frac{\text{ft}^2}{\text{ac}} \times \frac{1}{27 \text{ ft}^3} \times \frac{\text{day}}{86400 \text{ s}} = 0.21 \text{ days}$$

IV) From WSEL 461 - 459

$$\Delta S = 15 - 9 = 6 \text{ ac-ft}$$

$$\bar{Q} = 25 \text{ cfs}$$

$$t = 6 \text{ ac-ft} \times 43560 \frac{\text{ft}^2}{\text{ac}} \times \frac{1}{25 \text{ ft}^3} \times \frac{\text{day}}{86400 \text{ s}} = 0.12 \text{ day}$$

V) From WSEL 459 - 457

$$\Delta S = 9 - 3 = 6 \text{ ac-ft}$$

$$\bar{Q} = 12 \text{ cfs}$$

$$t = 6 \text{ ac-ft} \times 43560 \frac{\text{ft}^2}{\text{ac}} \times \frac{1}{12 \text{ ft}^3} \times \frac{\text{day}}{86400 \text{ sec}} = 0.25 \text{ day}$$

VI) Total time required for WSEL to reach principal spillway crest

$$T = 0.29 + 0.24 + 0.21 + 0.12 + 0.25 = 1.11 \text{ day} < 3\text{-days} \quad \text{OK.}$$

∴ Start routing at Principal Spillway Crest Elevation

PRC ENGINEERING CONSULTANTS, INC.

DAM SAFETY INSPECTION

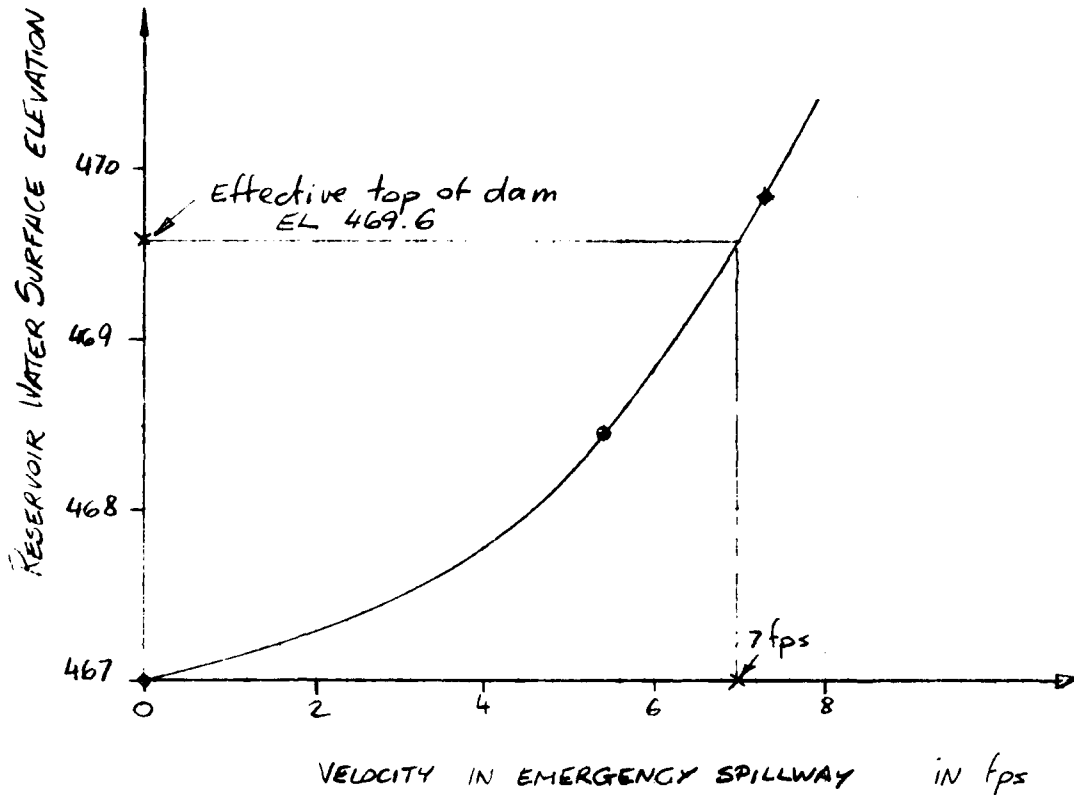
SHEET NO 1 OF 1

WESTHOFF DAM (MO 11140)

JOB NO 1263

DETERMINATION OF EFFECTIVE TCM OF DAM

BY FE DATE June 82



Emergency Spillway Channel is a grass lined earth channel.

Assuming channel material as "KENTUCKY BLUEGRASS - SILT CLAY", the maximum permissible mean channel velocity is 7 ft/sec. (page 36 EM 1110-2-1601).

The water surface elevation in the reservoir corresponding to a velocity of 7 ft/sec in the emergency spillway is 469.6. Thus the "Effective Top of Dam" for Westhoff dam is at elevation 469.6 above M.S.L.

HEC1DB INPUT DATA

一、二、三、四、五、六、七、八、九、十、十一、十二、十三、十四、十五、十六、十七、十八、十九、二十、二十一、二十二、二十三、二十四、二十五、二十六、二十七、二十八、二十九、三十、三十一、三十二、三十三、三十四、三十五、三十六、三十七、三十八、三十九、四十、四十一、四十二、四十三、四十四、四十五、四十六、四十七、四十八、四十九、五十、五十一、五十二、五十三、五十四、五十五、五十六、五十七、五十八、五十九、六十、六十一、六十二、六十三、六十四、六十五、六十六、六十七、六十八、六十九、七十、七十一、七十二、七十三、七十四、七十五、七十六、七十七、七十八、七十九、八十、八十一、八十二、八十三、八十四、八十五、八十六、八十七、八十八、八十九、九十、九十一、九十二、九十三、九十四、九十五、九十六、九十七、九十八、九十九、一百。

B-18

INFLOW PMF AND ONE-HALF PMF HYDROGRAPHS

PERFORMED BY: J. L. STREIBER, JR.

DATE: 11/14/60
BY: J. L. STREIBER, JR.
AND: J. L. STREIBER, JR.

JUN DATE 80/06/04
TIME 09.44.23

74M SAFETY INDUCTIVE - MISSOURI
WESTINGHOUSE (W. 11240)
- 91 AND 92 CENT DME

[illegible]

MULTI-OL: ANALYSIS TO BE PERFORMED
APRAME: 1 NMTC=2 CTCIC=1

11
 12
 13
 14
 15
 16
 17
 18
 19
 20
 21
 22
 23
 24
 25
 26
 27
 28
 29
 30
 31
 32
 33
 34
 35
 36
 37
 38
 39
 40
 41
 42
 43
 44
 45
 46
 47
 48
 49
 50
 51
 52
 53
 54
 55
 56
 57
 58
 59
 60
 61
 62
 63
 64
 65
 66
 67
 68
 69
 70
 71
 72
 73
 74
 75
 76
 77
 78
 79
 80
 81
 82
 83
 84
 85
 86
 87
 88
 89
 90
 91
 92
 93
 94
 95
 96
 97
 98
 99
 100
 101
 102
 103
 104
 105
 106
 107
 108
 109
 110
 111
 112
 113
 114
 115
 116
 117
 118
 119
 120
 121
 122
 123
 124
 125
 126
 127
 128
 129
 130
 131
 132
 133
 134
 135
 136
 137
 138
 139
 140
 141
 142
 143
 144
 145
 146
 147
 148
 149
 150
 151
 152
 153
 154
 155
 156
 157
 158
 159
 160
 161
 162
 163
 164
 165
 166
 167
 168
 169
 170
 171
 172
 173
 174
 175
 176
 177
 178
 179
 180
 181
 182
 183
 184
 185
 186
 187
 188
 189
 190
 191
 192
 193
 194
 195
 196
 197
 198
 199
 200
 201
 202
 203
 204
 205
 206
 207
 208
 209
 210
 211
 212
 213
 214
 215
 216
 217
 218
 219
 220
 221
 222
 223
 224
 225
 226
 227
 228
 229
 230
 231
 232
 233
 234
 235
 236
 237
 238
 239
 240
 241
 242
 243
 244
 245
 246
 247
 248
 249
 250
 251
 252
 253
 254
 255
 256
 257
 258
 259
 260
 261
 262
 263
 264
 265
 266
 267
 268
 269
 270
 271
 272
 273
 274
 275
 276
 277
 278
 279
 280
 281
 282
 283
 284
 285
 286
 287
 288
 289
 290
 291
 292
 293
 294
 295
 296
 297
 298
 299
 300
 301
 302
 303
 304
 305
 306
 307
 308
 309
 310
 311
 312
 313
 314
 315
 316
 317
 318
 319
 320
 321
 322
 323
 324
 325
 326
 327
 328
 329
 330
 331
 332
 333
 334
 335
 336
 337
 338
 339
 340
 341
 342
 343
 344
 345
 346
 347
 348
 349
 350
 351
 352
 353
 354
 355
 356
 357
 358
 359
 360
 361
 362
 363
 364
 365
 366
 367
 368
 369
 370
 371
 372
 373
 374
 375
 376
 377
 378
 379
 380
 381
 382
 383
 384
 385
 386
 387
 388
 389
 390
 391
 392
 393
 394
 395
 396
 397
 398
 399
 400
 401
 402
 403
 404
 405
 406
 407
 408
 409
 410
 411
 412
 413
 414
 415
 416
 417
 418
 419
 420
 421
 422
 423
 424
 425
 426
 427
 428
 429
 430
 431
 432
 433
 434
 435
 436
 437
 438
 439
 440
 441
 442
 443
 444
 445
 446
 447
 448
 449
 450
 451
 452
 453
 454
 455
 456
 457
 458
 459
 460
 461
 462
 463
 464
 465
 466
 467
 468
 469
 470
 471
 472
 473
 474
 475
 476
 477
 478
 479
 480
 481
 482
 483
 484
 485
 486
 487
 488
 489
 490
 491
 492
 493
 494
 495
 496
 497
 498
 499
 500
 501
 502
 503
 504
 505
 506
 507
 508
 509
 510
 511
 512
 513
 514
 515
 516
 517
 518
 519
 520
 521
 522
 523
 524
 525
 526
 527
 528
 529
 530
 531
 532
 533

U.S. DEPARTMENT OF JUSTICE
FEDERAL BUREAU OF INVESTIGATION
WASHINGTON, D.C. 20535

AND Y DECOMPOSITION, INFLUENCES OF UNIT VECTORS PARAMETERS

YEAR	COM-	IFC-	IFAF	JPLY	JPRY	YAM-	ISTAGE	IAUTO
1974	0	0	0	0	0	1	0	0
1975	0	0	0	0	0	1	0	0

```

IMDGG  IMDGG  DATA  :SNC=  ISMC=  LOCAL
TAREA  SIAF  TMSJ  RATIO=  0.000  1
IMDGG  IMDGG  DATA  :SNC=  ISMC=  LOCAL

```

SPF	26	27	28	29	30	31	32	33	34	35	36	37	38	39	40	41	42	43	44	45	46	47	48	49	50	51	52	53	54	55	56	57	58	59	60	61	62	63	64	65	66	67	68	69	70	71	72	73	74	75	76	77	78	79	80	81	82	83	84	85	86	87	88	89	90	91	92	93	94	95	96	97	98	99	100
SPF	26	27	28	29	30	31	32	33	34	35	36	37	38	39	40	41	42	43	44	45	46	47	48	49	50	51	52	53	54	55	56	57	58	59	60	61	62	63	64	65	66	67	68	69	70	71	72	73	74	75	76	77	78	79	80	81	82	83	84	85	86	87	88	89	90	91	92	93	94	95	96	97	98	99	100

[illegible]
$$0.0496 = 0.03343 \times 0.1 - 0.16 = 0.0496$$

UNIT HYDROGRAPH DATA
TC= 0.00 LAC= .72

DATE: 06-07-08
TIME: 10:00

[illegible]

MO-DA	HR-MN	PERIOD	RAIN	EXCS	LOSS	COMP	MO-DA	HR-MN	PERIOD	RAIN	EXCS	LOSS	COMP
1-01	00	1	.01	.00	.01	0	1-01	12-31	151	.21	.20	.00	910.
1-01	01	2	.01	.00	.01	0	1-01	12-31	152	.21	.20	.00	897.
1-01	02	3	.01	.00	.01	0	1-01	12-31	153	.21	.20	.00	885.
1-01	03	4	.01	.00	.01	0	1-01	12-31	154	.21	.20	.00	873.
1-01	04	5	.01	.00	.01	0	1-01	12-31	155	.21	.20	.00	861.
1-01	05	6	.01	.00	.01	0	1-01	12-31	156	.21	.20	.00	849.
1-01	06	7	.01	.00	.01	0	1-01	12-31	157	.21	.20	.00	837.
1-01	07	8	.01	.00	.01	0	1-01	12-31	158	.21	.20	.00	825.
1-01	08	9	.01	.00	.01	0	1-01	12-31	159	.21	.20	.00	813.
1-01	09	10	.01	.00	.01	0	1-01	12-31	160	.21	.20	.00	801.
1-01	10	11	.01	.00	.01	0	1-01	12-31	161	.21	.20	.00	789.
1-01	11	12	.01	.00	.01	0	1-01	12-31	162	.21	.20	.00	777.
1-01	12	13	.01	.00	.01	0	1-01	12-31	163	.21	.20	.00	765.
1-01	13	14	.01	.00	.01	0	1-01	12-31	164	.21	.20	.00	753.
1-01	14	15	.01	.00	.01	0	1-01	12-31	165	.21	.20	.00	741.
1-01	15	16	.01	.00	.01	0	1-01	12-31	166	.21	.20	.00	729.
1-01	16	17	.01	.00	.01	0	1-01	12-31	167	.21	.20	.00	717.
1-01	17	18	.01	.00	.01	0	1-01	12-31	168	.21	.20	.00	705.
1-01	18	19	.01	.00	.01	0	1-01	12-31	169	.21	.20	.00	693.
1-01	19	20	.01	.00	.01	0	1-01	12-31	170	.21	.20	.00	681.
1-01	20	21	.01	.00	.01	0	1-01	12-31	171	.21	.20	.00	669.
1-01	21	22	.01	.00	.01	0	1-01	12-31	172	.21	.20	.00	657.
1-01	22	23	.01	.00	.01	0	1-01	12-31	173	.21	.20	.00	645.
1-01	23	24	.01	.00	.01	0	1-01	12-31	174	.21	.20	.00	633.
1-01	24	25	.01	.00	.01	0	1-01	12-31	175	.21	.20	.00	621.
1-01	25	26	.01	.00	.01	0	1-01	12-31	176	.21	.20	.00	609.
1-01	26	27	.01	.00	.01	0	1-01	12-31	177	.21	.20	.00	597.
1-01	27	28	.01	.00	.01	0	1-01	12-31	178	.21	.20	.00	585.
1-01	28	29	.01	.00	.01	0	1-01	12-31	179	.21	.20	.00	573.
1-01	29	30	.01	.00	.01	0	1-01	12-31	180	.21	.20	.00	561.
1-01	30	31	.01	.00	.01	0	1-01	12-31	181	.21	.20	.00	549.
1-01	31	32	.01	.00	.01	0	1-01	12-31	182	.21	.20	.00	537.
1-01	32	33	.01	.00	.01	0	1-01	12-31	183	.21	.20	.00	525.
1-01	33	34	.01	.00	.01	0	1-01	12-31	184	.21	.20	.00	513.
1-01	34	35	.01	.00	.01	0	1-01	12-31	185	.21	.20	.00	501.
1-01	35	36	.01	.00	.01	0	1-01	12-31	186	.21	.20	.00	489.
1-01	36	37	.01	.00	.01	0	1-01	12-31	187	.21	.20	.00	477.
1-01	37	38	.01	.00	.01	0	1-01	12-31	188	.21	.20	.00	465.
1-01	38	39	.01	.00	.01	0	1-01	12-31	189	.21	.20	.00	453.
1-01	39	40	.01	.00	.01	0	1-01	12-31	190	.21	.20	.00	441.
1-01	40	41	.01	.00	.01	0	1-01	12-31	191	.21	.20	.00	429.
1-01	41	42	.01	.00	.01	0	1-01	12-31	192	.21	.20	.00	417.
1-01	42	43	.01	.00	.01	0	1-01	12-31	193	.21	.20	.00	405.
1-01	43	44	.01	.00	.01	0	1-01	12-31	194	.21	.20	.00	393.
1-01	44	45	.01	.00	.01	0	1-01	12-31	195	.21	.20	.00	381.
1-01	45	46	.01	.00	.01	0	1-01	12-31	196	.21	.20	.00	369.
1-01	46	47	.01	.00	.01	0	1-01	12-31	197	.21	.20	.00	357.
1-01	47	48	.01	.00	.01	0	1-01	12-31	198	.21	.20	.00	345.
1-01	48	49	.01	.00	.01	0	1-01	12-31	199	.21	.20	.00	333.
1-01	49	50	.01	.00	.01	0	1-01	12-31	200	.21	.20	.00	321.
1-01	50	51	.01	.00	.01	0	1-01	12-31	201	.21	.20	.00	309.
1-01	51	52	.01	.00	.01	0	1-01	12-31	202	.21	.20	.00	297.
1-01	52	53	.01	.00	.01	0	1-01	12-31	203	.21	.20	.00	285.
1-01	53	54	.01	.00	.01	0	1-01	12-31	204	.21	.20	.00	273.
1-01	54	55	.01	.00	.01	0	1-01	12-31	205	.21	.20	.00	261.
1-01	55	56	.01	.00	.01	0	1-01	12-31	206	.21	.20	.00	249.
1-01	56	57	.01	.00	.01	0	1-01	12-31	207	.21	.20	.00	237.
1-01	57	58	.01	.00	.01	0	1-01	12-31	208	.21	.20	.00	225.
1-01	58	59	.01	.00	.01	0	1-01	12-31	209	.21	.20	.00	213.
1-01	59	60	.01	.00	.01	0	1-01	12-31	210	.21	.20	.00	201.
1-01	60	61	.01	.00	.01	0	1-01	12-31	211	.21	.20	.00	189.
1-01	61	62	.01	.00	.01	0	1-01	12-31	212	.21	.20	.00	177.
1-01	62	63	.01	.00	.01	0	1-01	12-31	213	.21	.20	.00	165.
1-01	63	64	.01	.00	.01	0	1-01	12-31	214	.21	.20	.00	153.
1-01	64	65	.01	.00	.01	0	1-01	12-31	215	.21	.20	.00	141.
1-01	65	66	.01	.00	.01	0	1-01	12-31	216	.21	.20	.00	129.
1-01	66	67	.01	.00	.01	0	1-01	12-31	217	.21	.20	.00	117.
1-01	67	68	.01	.00	.01	0	1-01	12-31	218	.21	.20	.00	105.
1-01	68	69	.01	.00	.01	0	1-01	12-31	219	.21	.20	.00	93.
1-01	69	70	.01	.00	.01	0	1-01	12-31	220	.21	.20	.00	81.
1-01	70	71	.01	.00	.01	0	1-01	12-31	221	.21	.20	.00	69.
1-01	71	72	.01	.00	.01	0	1-01	12-31	222	.21	.20	.00	57.
1-01	72	73	.01	.00	.01	0	1-01	12-31	223	.21	.20	.00	45.
1-01	73	74	.01	.00	.01	0	1-01	12-31	224	.21	.20	.00	33.
1-01	74	75	.01	.00	.01	0	1-01	12-31	225	.21	.20	.00	21.
1-01	75	76	.01	.00	.01	0	1-01	12-31	226	.21	.20	.00	9.
1-01	76	77	.01	.00	.01	0	1-01	12-31	227	.21	.20	.00	0.

1.01	4.45	57	.11	.01	.01	35	1.01	17.15	207	.23	.23	.06	1834
1.01	4.50	58	.01	.01	.01	36	1.01	17.20	208	.23	.23	.07	1180
1.01	4.55	59	.01	.01	.01	36	1.01	17.25	209	.23	.23	.00	1152
1.01	4.60	60	.01	.01	.01	37	1.01	17.30	210	.23	.23	.00	1095
1.01	4.65	61	.01	.01	.01	37	1.01	17.35	211	.23	.23	.00	1071
1.01	4.70	62	.01	.01	.01	38	1.01	17.40	212	.23	.23	.00	1056
1.01	4.75	63	.01	.01	.01	38	1.01	17.45	213	.23	.23	.00	1045
1.01	4.80	64	.01	.01	.01	39	1.01	17.50	214	.23	.23	.00	1038
1.01	4.85	65	.01	.01	.01	39	1.01	17.55	215	.23	.23	.00	1031
1.01	4.90	66	.01	.01	.01	39	1.01	18.00	216	.23	.23	.00	1030
1.01	4.95	67	.01	.01	.01	40	1.01	18.05	217	.02	.02	.00	1008
1.01	5.00	68	.01	.01	.01	40	1.01	18.10	218	.02	.02	.00	928
1.01	5.05	69	.01	.01	.01	41	1.01	18.15	219	.02	.02	.00	77
1.01	5.10	70	.01	.01	.01	41	1.01	18.20	220	.02	.02	.00	605
1.01	5.15	71	.01	.01	.01	41	1.01	18.25	221	.02	.02	.00	472
1.01	5.20	72	.01	.01	.01	42	1.01	18.30	222	.02	.02	.00	330
1.01	5.25	73	.01	.01	.01	42	1.01	18.35	223	.02	.02	.00	252
1.01	5.30	74	.01	.01	.01	42	1.01	18.40	224	.02	.02	.00	204
1.01	5.35	75	.01	.01	.01	43	1.01	18.45	225	.02	.02	.00	165
1.01	5.40	76	.01	.01	.01	43	1.01	18.50	226	.02	.02	.00	141
1.01	5.45	77	.01	.01	.01	44	1.01	18.55	227	.02	.02	.00	125
1.01	5.50	78	.01	.01	.01	44	1.01	19.00	228	.02	.02	.00	114
1.01	5.55	79	.01	.01	.01	45	1.01	19.05	229	.02	.02	.00	107
1.01	5.60	80	.01	.01	.01	45	1.01	19.10	230	.02	.02	.00	102
1.01	5.65	81	.01	.01	.01	45	1.01	19.15	231	.02	.02	.00	98
1.01	5.70	82	.01	.01	.01	46	1.01	19.20	232	.02	.02	.00	97
1.01	5.75	83	.01	.01	.01	46	1.01	19.25	233	.02	.02	.00	95
1.01	5.80	84	.01	.01	.01	47	1.01	19.30	234	.02	.02	.00	94
1.01	5.85	85	.01	.01	.01	47	1.01	19.35	235	.02	.02	.00	93
1.01	5.90	86	.01	.01	.01	48	1.01	19.40	236	.02	.02	.00	93
1.01	5.95	87	.01	.01	.01	48	1.01	19.45	237	.02	.02	.00	93
1.01	6.00	88	.01	.01	.01	48	1.01	19.50	238	.02	.02	.00	93
1.01	6.05	89	.01	.01	.01	49	1.01	19.55	239	.02	.02	.00	93
1.01	6.10	90	.01	.01	.01	49	1.01	20.00	240	.02	.02	.00	93
1.01	6.15	91	.01	.01	.01	49	1.01	20.05	241	.02	.02	.00	93
1.01	6.20	92	.01	.01	.01	50	1.01	20.10	242	.02	.02	.00	93
1.01	6.25	93	.01	.01	.01	50	1.01	20.15	243	.02	.02	.00	93
1.01	6.30	94	.01	.01	.01	50	1.01	20.20	244	.02	.02	.00	93
1.01	6.35	95	.01	.01	.01	51	1.01	20.25	245	.02	.02	.00	93
1.01	6.40	96	.01	.01	.01	51	1.01	20.30	246	.02	.02	.00	93
1.01	6.45	97	.01	.01	.01	51	1.01	20.35	247	.02	.02	.00	93
1.01	6.50	98	.01	.01	.01	51	1.01	20.40	248	.02	.02	.00	93
1.01	6.55	99	.01	.01	.01	51	1.01	20.45	249	.02	.02	.00	93
1.01	6.60	100	.01	.01	.01	52	1.01	20.50	250	.02	.02	.00	93
1.01	6.65	101	.01	.01	.01	52	1.01	20.55	251	.02	.02	.00	93
1.01	6.70	102	.01	.01	.01	52	1.01	21.00	252	.02	.02	.00	93
1.01	6.75	103	.01	.01	.01	52	1.01	21.05	253	.02	.02	.00	93
1.01	6.80	104	.01	.01	.01	53	1.01	21.10	254	.02	.02	.00	93
1.01	6.85	105	.01	.01	.01	53	1.01	21.15	255	.02	.02	.00	93
1.01	6.90	106	.01	.01	.01	53	1.01	21.20	256	.02	.02	.00	93
1.01	6.95	107	.01	.01	.01	54	1.01	21.25	257	.02	.02	.00	93
1.01	7.00	108	.01	.01	.01	54	1.01	21.30	258	.02	.02	.00	93
1.01	7.05	109	.01	.01	.01	54	1.01	21.35	259	.02	.02	.00	93
1.01	7.10	110	.01	.01	.01	55	1.01	21.40	260	.02	.02	.00	93
1.01	7.15	111	.01	.01	.01	55	1.01	21.45	261	.02	.02	.00	93
1.01	7.20	112	.01	.01	.01	55	1.01	21.50	262	.02	.02	.00	93
1.01	7.25	113	.01	.01	.01	56	1.01	21.55	263	.02	.02	.00	93
1.01	7.30	114	.01	.01	.01	56	1.01	22.00	264	.02	.02	.00	93
1.01	7.35	115	.01	.01	.01	56	1.01	22.05	265	.02	.02	.00	93
1.01	7.40	116	.01	.01	.01	57	1.01	22.10	266	.02	.02	.00	93

PMF FLOOD ROUTING

1. The first group of students (Group A) was assigned to the traditional lecture-based learning method. They received a 10-minute lecture on the topic of climate change, followed by a 10-minute Q&A session. The second group (Group B) was assigned to the interactive learning method. They received a 10-minute interactive presentation on the topic of climate change, followed by a 10-minute Q&A session. The third group (Group C) was assigned to the self-paced learning method. They received a 10-minute self-paced presentation on the topic of climate change, followed by a 10-minute Q&A session. The fourth group (Group D) was assigned to the blended learning method. They received a 10-minute blended presentation on the topic of climate change, followed by a 10-minute Q&A session. The fifth group (Group E) was assigned to the flipped classroom method. They received a 10-minute flipped presentation on the topic of climate change, followed by a 10-minute Q&A session. The sixth group (Group F) was assigned to the hybrid learning method. They received a 10-minute hybrid presentation on the topic of climate change, followed by a 10-minute Q&A session. The seventh group (Group G) was assigned to the flipped classroom method. They received a 10-minute flipped presentation on the topic of climate change, followed by a 10-minute Q&A session. The eighth group (Group H) was assigned to the hybrid learning method. They received a 10-minute hybrid presentation on the topic of climate change, followed by a 10-minute Q&A session. The ninth group (Group I) was assigned to the flipped classroom method. They received a 10-minute flipped presentation on the topic of climate change, followed by a 10-minute Q&A session. The tenth group (Group J) was assigned to the hybrid learning method. They received a 10-minute hybrid presentation on the topic of climate change, followed by a 10-minute Q&A session.

RCUTE INF.C. HYDF 3-APR THROU... DESTHOFF DAM (MC 11140)

ROUTING DATA									
CLASS	CLASS	WGT	INVS	ISAVE	IOPT	IPMP	LSTR		
0.00	0.00	0.00	1	1	0	0	0	0	0

Account	1928	1929	1930	1931	1932	1933	1934	1935	1936	1937	1938	1939	1940	1941	1942	1943	1944	1945	1946	1947	1948	1949	1950	1951	1952	1953	1954	1955	1956	1957	1958	1959	1960	1961	1962	1963	1964	1965	1966	1967	1968	1969	1970	1971	1972	1973	1974	1975	1976	1977	1978	1979	1980	1981	1982	1983	1984	1985	1986	1987	1988	1989	1990	1991	1992	1993	1994	1995	1996	1997	1998	1999	2000	2001	2002	2003	2004	2005	2006	2007	2008	2009	2010	2011	2012	2013	2014	2015	2016	2017	2018	2019	2020	2021	2022	2023	2024	2025	2026	2027	2028	2029	2030	2031	2032	2033	2034	2035	2036	2037	2038	2039	2040	2041	2042	2043	2044	2045	2046	2047	2048	2049	2050	2051	2052	2053	2054	2055	2056	2057	2058	2059	2060	2061	2062	2063	2064	2065	2066	2067	2068	2069	2070	2071	2072	2073	2074	2075	2076	2077	2078	2079	2080	2081	2082	2083	2084	2085	2086	2087	2088	2089	2090	2091	2092	2093	2094	2095	2096	2097	2098	2099	2100	2101	2102	2103	2104	2105	2106	2107	2108	2109	2110	2111	2112	2113	2114	2115	2116	2117	2118	2119	2120	2121	2122	2123	2124	2125	2126	2127	2128	2129	2130	2131	2132	2133	2134	2135	2136	2137	2138	2139	2140	2141	2142	2143	2144	2145	2146	2147	2148	2149	2150	2151	2152	2153	2154	2155	2156	2157	2158	2159	2160	2161	2162	2163	2164	2165	2166	2167	2168	2169	2170	2171	2172	2173	2174	2175	2176	2177	2178	2179	2180	2181	2182	2183	2184	2185	2186	2187	2188	2189	2190	2191	2192	2193	2194	2195	2196	2197	2198	2199	2200	2201	2202	2203	2204	2205	2206	2207	2208	2209	2210	2211	2212	2213	2214	2215	2216	2217	2218	2219	2220	2221	2222	2223	2224	2225	2226	2227	2228	2229	2230	2231	2232	2233	2234	2235	2236	2237	2238	2239	2240	2241	2242	2243	2244	2245	2246	2247	2248	2249	2250	2251	2252	2253	2254	2255	2256	2257	2258	2259	2260	2261	2262	2263	2264	2265	2266	2267	2268	2269	2270	2271	2272	2273	2274	2275	2276	2277	2278	2279	2280	2281	2282	2283	2284	2285	2286	2287	2288	2289	2290	2291	2292	2293	2294	2295	2296	2297	2298	2299	2300	2301	2302	2303	2304	2305	2306	2307	2308	2309	2310	2311	2312	2313	2314	2315	2316	2317	2318	2319	2320	2321	2322	2323	2324	2325	2326	2327	2328	2329	2330	2331	2332	2333	2334	2335</
---------	------	------	------	------	------	------	------	------	------	------	------	------	------	------	------	------	------	------	------	------	------	------	------	------	------	------	------	------	------	------	------	------	------	------	------	------	------	------	------	------	------	------	------	------	------	------	------	------	------	------	------	------	------	------	------	------	------	------	------	------	------	------	------	------	------	------	------	------	------	------	------	------	------	------	------	------	------	------	------	------	------	------	------	------	------	------	------	------	------	------	------	------	------	------	------	------	------	------	------	------	------	------	------	------	------	------	------	------	------	------	------	------	------	------	------	------	------	------	------	------	------	------	------	------	------	------	------	------	------	------	------	------	------	------	------	------	------	------	------	------	------	------	------	------	------	------	------	------	------	------	------	------	------	------	------	------	------	------	------	------	------	------	------	------	------	------	------	------	------	------	------	------	------	------	------	------	------	------	------	------	------	------	------	------	------	------	------	------	------	------	------	------	------	------	------	------	------	------	------	------	------	------	------	------	------	------	------	------	------	------	------	------	------	------	------	------	------	------	------	------	------	------	------	------	------	------	------	------	------	------	------	------	------	------	------	------	------	------	------	------	------	------	------	------	------	------	------	------	------	------	------	------	------	------	------	------	------	------	------	------	------	------	------	------	------	------	------	------	------	------	------	------	------	------	------	------	------	------	------	------	------	------	------	------	------	------	------	------	------	------	------	------	------	------	------	------	------	------	------	------	------	------	------	------	------	------	------	------	------	------	------	------	------	------	------	------	------	------	------	------	------	------	------	------	------	------	------	------	------	------	------	------	------	------	------	------	------	------	------	------	------	------	------	------	------	------	------	------	------	------	------	------	------	------	------	------	------	------	------	------	------	------	------	------	------	------	------	------	------	------	------	------	------	------	------	------	------	------	------	------	------	------	------	------	------	------	------	------	------	------	------	------	------	------	------	------	------	------	------	------	------	------	------	------	------	------	------	--------

1. CAPACITY=	5.	12.	40.	59.	35.	101.	307.
--------------	----	-----	-----	-----	-----	------	------

ELEVATION=	47.	467.	470.	475.	480.
462.	471.	480.	465.		

ELEVATION=	47.	467.	470.	475.	480.
462.	471.	480.	465.		

EMPL	COOL	EXPL	POCS	SPHS	TRBL
7383	7003	7383	7003	7383	7383

[illegible]

TOPEL
COGO FMC JAWID
LAF DAF

476.0 0.0 0.0

100

RYATON, 11140, PLAT 1, RATIO 1

TABLE OF PERIOD HYDROGRAPH ORIGINATES

[illegible]

19.	20.	21.	22.	23.	24.	25.	26.
26.	27.	28.	29.	30.	31.	32.	33.
34.	35.	36.	37.	38.	39.	40.	41.
42.	43.	44.	45.	46.	47.	48.	49.
50.	51.	52.	53.	54.	55.	56.	57.
58.	59.	60.	61.	62.	63.	64.	65.
66.	67.	68.	69.	70.	71.	72.	73.
74.	75.	76.	77.	78.	79.	80.	81.
82.	83.	84.	85.	86.	87.	88.	89.
90.	91.	92.	93.	94.	95.	96.	97.
98.	99.	100.	101.	102.	103.	104.	105.
106.	107.	108.	109.	110.	111.	112.	113.
114.	115.	116.	117.	118.	119.	120.	121.
122.	123.	124.	125.	126.	127.	128.	129.
130.	131.	132.	133.	134.	135.	136.	137.
138.	139.	140.	141.	142.	143.	144.	145.
146.	147.	148.	149.	150.	151.	152.	153.
154.	155.	156.	157.	158.	159.	160.	161.
162.	163.	164.	165.	166.	167.	168.	169.
170.	171.	172.	173.	174.	175.	176.	177.
178.	179.	180.	181.	182.	183.	184.	185.
186.	187.	188.	189.	190.	191.	192.	193.
194.	195.	196.	197.	198.	199.	200.	201.
202.	203.	204.	205.	206.	207.	208.	209.
210.	211.	212.	213.	214.	215.	216.	217.
218.	219.	220.	221.	222.	223.	224.	225.
226.	227.	228.	229.	230.	231.	232.	233.
234.	235.	236.	237.	238.	239.	240.	241.
242.	243.	244.	245.	246.	247.	248.	249.
250.	251.	252.	253.	254.	255.	256.	257.
258.	259.	260.	261.	262.	263.	264.	265.
266.	267.	268.	269.	270.	271.	272.	273.
274.	275.	276.	277.	278.	279.	280.	281.
282.	283.	284.	285.	286.	287.	288.	289.
290.	291.	292.	293.	294.	295.	296.	297.
298.	299.	300.	301.	302.	303.	304.	305.
306.	307.	308.	309.	310.	311.	312.	313.
314.	315.	316.	317.	318.	319.	320.	321.
322.	323.	324.	325.	326.	327.	328.	329.
330.	331.	332.	333.	334.	335.	336.	337.
338.	339.	340.	341.	342.	343.	344.	345.
346.	347.	348.	349.	350.	351.	352.	353.
354.	355.	356.	357.	358.	359.	360.	361.
362.	363.	364.	365.	366.	367.	368.	369.
370.	371.	372.	373.	374.	375.	376.	377.
378.	379.	380.	381.	382.	383.	384.	385.
386.	387.	388.	389.	390.	391.	392.	393.
394.	395.	396.	397.	398.	399.	400.	401.
402.	403.	404.	405.	406.	407.	408.	409.
410.	411.	412.	413.	414.	415.	416.	417.
418.	419.	420.	421.	422.	423.	424.	425.
426.	427.	428.	429.	430.	431.	432.	433.
434.	435.	436.	437.	438.	439.	440.	441.
442.	443.	444.	445.	446.	447.	448.	449.
450.	451.	452.	453.	454.	455.	456.	457.
458.	459.	460.	461.	462.	463.	464.	465.
466.	467.	468.	469.	470.	471.	472.	473.
474.	475.	476.	477.	478.	479.	480.	481.
482.	483.	484.	485.	486.	487.	488.	489.
490.	491.	492.	493.	494.	495.	496.	497.
498.	499.	500.	501.	502.	503.	504.	505.
506.	507.	508.	509.	510.	511.	512.	513.
514.	515.	516.	517.	518.	519.	520.	521.
522.	523.	524.	525.	526.	527.	528.	529.
530.	531.	532.	533.	534.	535.	536.	537.
538.	539.	540.	541.	542.	543.	544.	545.
546.	547.	548.	549.	550.	551.	552.	553.
554.	555.	556.	557.	558.	559.	560.	561.
562.	563.	564.	565.	566.	567.	568.	569.
570.	571.	572.	573.	574.	575.	576.	577.
578.	579.	580.	581.	582.	583.	584.	585.
586.	587.	588.	589.	590.	591.	592.	593.
594.	595.	596.	597.	598.	599.	600.	601.
602.	603.	604.	605.	606.	607.	608.	609.
610.	611.	612.	613.	614.	615.	616.	617.
618.	619.	620.	621.	622.	623.	624.	625.
626.	627.	628.	629.	630.	631.	632.	633.
634.	635.	636.	637.	638.	639.	640.	641.
642.	643.	644.	645.	646.	647.	648.	649.
650.	651.	652.	653.	654.	655.	656.	657.
658.	659.	660.	661.	662.	663.	664.	665.
666.	667.	668.	669.	670.	671.	672.	673.
674.	675.	676.	677.	678.	679.	680.	681.
682.	683.	684.	685.	686.	687.	688.	689.
690.	691.	692.	693.	694.	695.	696.	697.
698.	699.	700.	701.	702.	703.	704.	705.
706.	707.	708.	709.	710.	711.	712.	713.
714.	715.	716.	717.	718.	719.	720.	721.
722.	723.	724.	725.	726.	727.	728.	729.
730.	731.	732.	733.	734.	735.	736.	737.
738.	739.	740.	741.	742.	743.	744.	745.
746.	747.	748.	749.	750.	751.	752.	753.
754.	755.	756.	757.	758.	759.	760.	761.
762.	763.	764.	765.	766.	767.	768.	769.
770.	771.	772.	773.	774.	775.	776.	777.
778.	779.	780.	781.	782.	783.	784.	785.
786.	787.	788.	789.	790.	791.	792.	793.
794.	795.	796.	797.	798.	799.	800.	801.
802.	803.	804.	805.	806.	807.	808.	809.
810.	811.	812.	813.	814.	815.	816.	817.
818.	819.	820.	821.	822.	823.	824.	825.
826.	827.	828.	829.	830.	831.	832.	833.
834.	835.	836.	837.	838.	839.	840.	841.
842.	843.	844.	845.	846.	847.	848.	849.
850.	851.	852.	853.	854.	855.	856.	857.
858.	859.	860.	861.	862.	863.	864.	865.
866.	867.	868.	869.	870.	871.	872.	873.
874.	875.	876.	877.	878.	879.	880.	881.
882.	883.	884.	885.	886.	887.	888.	889.
890.	891.	892.	893.	894.	895.	896.	897.
898.	899.	900.	901.	902.	903.	904.	905.
906.	907.	908.	909.	910.	911.	912.	913.
914.	915.	916.	917.	918.	919.	920.	921.
922.	923.	924.	925.	926.	927.	928.	929.
930.	931.	932.	933.	934.	935.	936.	937.
938.	939.	940.	941.	942.	943.	944.	945.
946.	947.	948.	949.	950.	951.	952.	953.
954.	955.	956.	957.	958.	959.	960.	961.
962.	963.	964.	965.	966.	967.	968.	969.
970.	971.	972.	973.	974.	975.	976.	977.
978.	979.	980.	981.	982.	983.	984.	985.
986.	987.	988.	989.	990.	991.	992.	993.
994.	995.	996.	997.	998.	999.	1000.	1001.

STAGE

AD-A106 512

PRC CONSOER TOWNSEND INC ST LOUIS MO

F/G 13/13

NATIONAL DAM SAFETY PROGRAM. WESTHOFF DAM (MO 11140), MISSISSIP--ETC(U)

SEP 80 W G SHIFRIN

DACW43-80-C-0094

NL

UNCLASSIFIED

2 15 2

NO

NO

NO

NO

NO

NO

NO

NO

NO

NO

NO

NO

NO

NO

NO

NO

NO

NO

NO

NO

NO

NO

NO

NO

NO

NO

NO

NO

NO

NO

NO

NO

NO

NO

NO

NO

NO

NO

NO

NO

NO

NO

NO

NO

NO

NO

NO

NO

NO

NO

NO

NO

NO

NO

NO

NO

NO

NO

NO

NO

END

DATE

FILED

12-81

DTIC

ONE-HALF PMF FLOOD ROUTING

B-30

SUMMARY OF PMF AND ONE-HALF PMF FLOOD ROUTING

PEAK FLOW AND STORAGE (END OF PERIOD) SUMMARY FOR MULTIPLE PLAN-RATIO ECONOMIC COMPUTATIONS
 FLOWS IN CUBIC FEET PER SECOND (CUBIC METERS PER SECOND)
 AREA IN SQUARE MILES (SQUARE KILOMETERS)

OPERATION	STATION	A-1A	PLAN	RATIOS APPLIED TO FLOWS	
				RATIO 1	RATIO 2
				1.00	.50
HYDROGRAPH AT	11190	.54 (1.00)	1	5266.	2633.
				(14.4131)	(76.571)
ROUTED TO	11140	.24 (1.00)	1	5166.	2571.
				(146.011)	(71.601)

3-24

SUMMARY OF DAM SAFETY ANALYSIS

PLAN 1	ELEVATION STORAGE OUTFLOW	INITIAL VAL E 450.00 3. 0.	SPILLWAY CREST 456.00 3. 0.	TOP OF DAM 470.00 95. 002.	RATIO OF PMF 1.00 0.80	MAXIMUM RESERVE IN W. S. S. L. V. 1.54 0.83	MAXIMUM STORAGE AC-FT 120. 108.	MAXIMUM OUTFLOW CFS 5156. 2531.	DURATION OVER TOP HOURS 5.08 1.06	TIME OF MAX OUTFLOW HOURS 15.92 15.92	TIME OF FAILURE HOURS 0.00 0.00
--------------	---------------------------------	-------------------------------------	--------------------------------------	-------------------------------------	------------------------------------	---	---	---	---	---	---

PERCENT OF PMF FLOOD ROUTING
EQUAL TO SPILLWAY CAPACITY

NO	DATE	TIME	PRECIPITATION	INFLUX	HYDROGRAPH	THROUGH	WESTHOFF	DAM	(NO 11140)	PERCENT	PMF	MISSOURI	WESTHOFF	DAM	(NO 11140)	MISSOURI	WESTHOFF	DAM	(NO 11140)
1	1	1	300	0	5	0	0	0	0	0	0	0	0	0	0	0	0	0	0
2	1	1	5	4	1	0	0	0	0	0	0	0	0	0	0	0	0	0	0
3	1	1	13	17	18	22	0	0	0	0	0	0	0	0	0	0	0	0	0
4	1	1	0	1140	0	0	0	0	0	0	0	0	0	0	0	0	0	0	0
5	1	1	1	0	58	130	0	0	0	0	0	0	0	0	0	0	0	0	0
6	1	1	1	24.8	100	100	0	0	0	0	0	0	0	0	0	0	0	0	0
7	1	1	1	0	0	0	0	0	0	0	0	0	0	0	0	0	0	0	0
8	1	1	1	0	0	0	0	0	0	0	0	0	0	0	0	0	0	0	0
9	1	1	1	0	0	0	0	0	0	0	0	0	0	0	0	0	0	0	0
10	1	1	1	0	0	0	0	0	0	0	0	0	0	0	0	0	0	0	0
11	1	1	1	0	0	0	0	0	0	0	0	0	0	0	0	0	0	0	0
12	1	1	1	0	0	0	0	0	0	0	0	0	0	0	0	0	0	0	0
13	1	1	1	0	0	0	0	0	0	0	0	0	0	0	0	0	0	0	0
14	1	1	1	0	0	0	0	0	0	0	0	0	0	0	0	0	0	0	0
15	1	1	1	0	0	0	0	0	0	0	0	0	0	0	0	0	0	0	0
16	1	1	1	0	0	0	0	0	0	0	0	0	0	0	0	0	0	0	0
17	1	1	1	0	0	0	0	0	0	0	0	0	0	0	0	0	0	0	0
18	1	1	1	0	0	0	0	0	0	0	0	0	0	0	0	0	0	0	0
19	1	1	1	0	0	0	0	0	0	0	0	0	0	0	0	0	0	0	0
20	1	1	1	0	0	0	0	0	0	0	0	0	0	0	0	0	0	0	0
21	1	1	1	0	0	0	0	0	0	0	0	0	0	0	0	0	0	0	0
22	1	1	1	0	0	0	0	0	0	0	0	0	0	0	0	0	0	0	0
23	1	1	1	0	0	0	0	0	0	0	0	0	0	0	0	0	0	0	0
24	1	1	1	0	0	0	0	0	0	0	0	0	0	0	0	0	0	0	0
25	1	1	1	0	0	0	0	0	0	0	0	0	0	0	0	0	0	0	0
26	1	1	1	0	0	0	0	0	0	0	0	0	0	0	0	0	0	0	0
27	1	1	1	0</															

PREVIEW OF SEQUENCE OF STREAM NETWORK CALCULATIONS

NUMBER HYDROGRAPH AT 11140
ROUTE HYDROGRAPH TO 11140
END OF NETWORK

.....
 FLOOD HYOGRAPH PACKAGE (HFC-1)
 DAN SAFETY VERSION JULY 1978
 LAST MODIFICATION 20 FEB 79

RUN DATE: 02/06/00
 TIME: 07:36:07.

DAN SAFETY INSPECTION - MISSOURI
 WEATHER DOW (NO 11140)
 PERCENT PMF

NO	NBR	NTP	LEV	IMP	TRC	MTRC	IPRT	INSTAN
100			0	0	0	0	0	0
			5	0	0	0	0	0

MULTI-PLAN ANALYSES TO BE PERFORMED
 PLANES 1 NALIVE 4 IPTIME 1
 RTIME .13 .17 .19 .22

.....

.....

.....

.....

.....

.....

.....

.....

.....

.....

.....

.....

.....

.....

SUN 32.37 51.21 1.16 100111.
(872.31 793.11 20.31 3967.50)

HY PROGRAM EDITING

ROUTE IN-1 - HYDROGRAPH FOR THE WEST-OF-TAM (11110)

STAGE	456.0	474.0	492.0	510.0	528.0	546.0	564.0	582.0	600.0	618.0	636.0	654.0	672.0	690.0	708.0	726.0	744.0	762.0	780.0	798.0	816.0	834.0	852.0	870.0	888.0	906.0	924.0	942.0	960.0	978.0	996.0	1014.0	1032.0	1050.0	1068.0	1086.0	1104.0	1122.0	1140.0	1158.0	1176.0	1194.0	1212.0	1230.0	1248.0	1266.0	1284.0	1302.0	1320.0	1338.0	1356.0	1374.0	1392.0	1410.0	1428.0	1446.0	1464.0	1482.0	1500.0	1518.0	1536.0	1554.0	1572.0	1590.0	1608.0	1626.0	1644.0	1662.0	1680.0	1698.0	1716.0	1734.0	1752.0	1770.0	1788.0	1806.0	1824.0	1842.0	1860.0	1878.0	1896.0	1914.0	1932.0	1950.0	1968.0	1986.0	2004.0	2022.0	2040.0	2058.0	2076.0	2094.0	2112.0	2130.0	2148.0	2166.0	2184.0	2202.0	2220.0	2238.0	2256.0	2274.0	2292.0	2310.0	2328.0	2346.0	2364.0	2382.0	2400.0	2418.0	2436.0	2454.0	2472.0	2490.0	2508.0	2526.0	2544.0	2562.0	2580.0	2598.0	2616.0	2634.0	2652.0	2670.0	2688.0	2706.0	2724.0	2742.0	2760.0	2778.0	2796.0	2814.0	2832.0	2850.0	2868.0	2886.0	2904.0	2922.0	2940.0	2958.0	2976.0	2994.0	3012.0	3030.0	3048.0	3066.0	3084.0	3102.0	3120.0	3138.0	3156.0	3174.0	3192.0	3210.0	3228.0	3246.0	3264.0	3282.0	3300.0	3318.0	3336.0	3354.0	3372.0	3390.0	3408.0	3426.0	3444.0	3462.0	3480.0	3498.0	3516.0	3534.0	3552.0	3570.0	3588.0	3606.0	3624.0	3642.0	3660.0	3678.0	3696.0	3714.0	3732.0	3750.0	3768.0	3786.0	3804.0	3822.0	3840.0	3858.0	3876.0	3894.0	3912.0	3930.0	3948.0	3966.0	3984.0	4002.0	4020.0	4038.0	4056.0	4074.0	4092.0	4110.0	4128.0	4146.0	4164.0	4182.0	4200.0	4218.0	4236.0	4254.0	4272.0	4290.0	4308.0	4326.0	4344.0	4362.0	4380.0	4398.0	4416.0	4434.0	4452.0	4470.0	4488.0	4506.0	4524.0	4542.0	4560.0	4578.0	4596.0	4614.0	4632.0	4650.0	4668.0	4686.0	4704.0	4722.0	4740.0	4758.0	4776.0	4794.0	4812.0	4830.0	4848.0	4866.0	4884.0	4902.0	4920.0	4938.0	4956.0	4974.0	4992.0	5010.0	5028.0	5046.0	5064.0	5082.0	5100.0	5118.0	5136.0	5154.0	5172.0	5190.0	5208.0	5226.0	5244.0	5262.0	5280.0	5298.0	5316.0	5334.0	5352.0	5370.0	5388.0	5406.0	5424.0	5442.0	5460.0	5478.0	5496.0	5514.0	5532.0	5550.0	5568.0	5586.0	5604.0	5622.0	5640.0	5658.0	5676.0	5694.0	5712.0	5730.0	5748.0	5766.0	5784.0	5802.0	5820.0	5838.0	5856.0	5874.0	5892.0	5910.0	5928.0	5946.0	5964.0	5982.0	6000.0	6018.0	6036.0	6054.0	6072.0	6090.0	6108.0	6126.0	6144.0	6162.0	6180.0	6198.0	6216.0	6234.0	6252.0	6270.0	6288.0	6306.0	6324.0	6342.0	6360.0	6378.0	6396.0	6414.0	6432.0	6450.0	6468.0	6486.0	6504.0	6522.0	6540.0	6558.0	6576.0	6594.0	6612.0	6630.0	6648.0	6666.0	6684.0	6702.0	6720.0	6738.0	6756.0	6774.0	6792.0	6810.0	6828.0	6846.0	6864.0	6882.0	6900.0	6918.0	6936.0	6954.0	6972.0	6990.0	7008.0	7026.0	7044.0	7062.0	7080.0	7098.0	7116.0	7134.0	7152.0	7170.0	7188.0	7206.0	7224.0	7242.0	7260.0	7278.0	7296.0	7314.0	7332.0	7350.0	7368.0	7386.0	7404.0	7422.0	7440.0	7458.0	7476.0	7494.0	7512.0	7530.0	7548.0	7566.0	7584.0	7602.0	7620.0	7638.0	7656.0	7674.0	7692.0	7710.0	7728.0	7746.0	7764.0	7782.0	7800.0	7818.0	7836.0	7854.0	7872.0	7890.0	7908.0	7926.0	7944.0	7962.0	7980.0	7998.0	8016.0	8034.0	8052.0	8070.0	8088.0	8106.0	8124.0	8142.0	8160.0	8178.0	8196.0	8214.0	8232.0	8250.0	8268.0	8286.0	8304.0	8322.0	8340.0	8358.0	8376.0	8394.0	8412.0	8430.0	8448.0	8466.0	8484.0	8502.0	8520.0	8538.0	8556.0	8574.0	8592.0	8610.0	8628.0	8646.0	8664.0	8682.0	8700.0	8718.0	8736.0	8754.0	8772.0	8790.0	8808.0	8826.0	8844.0	8862.0	8880.0	8898.0	8916.0	8934.0	8952.0	8970.0	8988.0	9006.0	9024.0	9042.0	9060.0	9078.0	9096.0	9114.0	9132.0	9150.0	9168.0	9186.0	9204.0	9222.0	9240.0	9258.0	9276.0	9294.0	9312.0	9330.0	9348.0	9366.0	9384.0	9402.0	9420.0	9438.0	9456.0	9474.0	9492.0	9510.0	9528.0	9546.0	9564.0	9582.0	9600.0	9618.0	9636.0	9654.0	9672.0	9690.0	9708.0	9726.0	9744.0	9762.0	9780.0	9798.0	9816.0	9834.0	9852.0	9870.0	9888.0	9906.0	9924.0	9942.0	9960.0	9978.0	9996.0	10014.0	10032.0	10050.0	10068.0	10086.0	10104.0	10122.0	10140.0	10158.0	10176.0	10194.0	10212.0	10230.0	10248.0	10266.0	10284.0	10302.0	10320.0	10338.0	10356.0	10374.0	10392.0	10410.0	10428.0	10446.0	10464.0	10482.0	10500.0	10518.0	10536.0	10554.0	10572.0	10590.0	10608.0	10626.0	10644.0	10662.0	10680.0	10698.0	10716.0	10734.0	10752.0	10770.0	10788.0	10806.0	10824.0	10842.0	10860.0	10878.0	10896.0	10914.0	10932.0	10950.0	10968.0	10986.0	11004.0	11022.0	11040.0	11058.0	11076.0	11094.0	11112.0	11130.0	11148.0	11166.0	11184.0	11202.0	11220.0	11238.0	11256.0	11274.0	11292.0	11310.0	11328.0	11346.0	11364.0	11382.0	11400.0	11418.0	11436.0	11454.0	11472.0	11490.0	11508.0	11526.0	11544.0	11562.0	11580.0	11598.0	11616.0	11634.0	11652.0	11670.0	11688.0	11706.0	11724.0	11742.0	11760.0	11778.0	11796.0	11814.0	11832.0	11850.0	11868.0	11886.0	11904.0	11922.0	11940.0	11958.0	11976.0	11994.0	12012.0	12030.0	12048.0	12066.0	12084.0	12102.0	12120.0	12138.0	12156.0	12174.0	12192.0	12210.0	12228.0	12246.0	12264.0	12282.0	12300.0	12318.0	12336.0	12354.0	12372.0	12390.0	12408.0	12426.0	12444.0	12462.0	12480.0	12498.0	12516.0	12534.0	12552.0	12570.0	12588.0	12606.0	12624.0	12642.0	12660.0	12678.0	12696.0	12714.0	12732.0	12750.0	12768.0	12786.0	12804.0	12822.0	12840.0	12858.0	12876.0	12894.0	12912.0	12930.0	12948.0	12966.0	12984.0	13002.0	13020.0	13038.0	13056.0	13074.0	13092.0	13110.0	13128.0	13146.0	13164.0	13182.0	13200.0	13218.0	13236.0	13254.0	13272.0	13290.0	13308.0	13326.0	13344.0	13362.0	13380.0	13398.0	13416.0	13434.0	13452.0	13470.0	13488.0	13506.0	13524.0	13542.0	13560.0	13578.0	13596.0	13614.0	13632.0	13650.0	13668.0	13686.0	13704.0	13722.0	13740.0	13758.0	13776.0	13794.0	13812.0	13830.0	13848.0	13866.0	13884.0	13902.0	13920.0	13938.0	13956.0	13974.0	13992.0	14010.0	14028.0	14046.0	14064.0	14082.0	14100.0	14118.0	14136.0	14154.0	14172.0	14190.0	14208.0	14226.0	14244.0	14262.0	14280.0	14298.0	14316.0	14334.0	14352.0	14370.0	14388.0	14406.0	14424.0	14442.0	14460.0	14478.0	14496.0	14514.0	14532.0	14550.0	14568.0	14586.0	14604.0	14622.0	14640.0	14658.0	14676.0	14694.0	14712.0	14730.0	14748.0	14766.0	14784.0	14802.0	14820.0	14838.0	14856.0	14874.0	14892.0	14910.0	14928.0	14946.0	14964.0	14982.0	15000.0	15018.0	15036.0	15054.0	15072.0	15090.0	15108.0	15126.0	15144.0	15162.0	15180.0	15198.0	15216.0	15234.0	15252.0	15270.0	15288.0	15306.0	15324.0	15342.0	15360.0	15378.0	15396.0	15414.0	15432.0	15450.0	15468.0	15486.0	15504.0	15522.0	15540.0	15558.0	15576.0	15594.0	15612.0	15630.0	15648.0	15666.0	15684.0	15702.0	15720.0	15738.0	15756.0	15774.0	15792.0	15810.0	15828.0	15846.0	15864.0	15882.0	15900.0	15918.0	15936.0	15954.0	15972.0	15990.0	16008.0	16026.0	16044.0	16062.0	16080.0	16098.0	16116.0	16134.0	16152.0	16170.0	16188.0	16206.0	16224.0	16242.0	16260.0	16278.0	16296.0	16314.0	16332.0	16350.0	16368.0	16386.0	16404.0	16422.0	16440.0	16458.0	16476.0	16494.0	16512.0	16530.0	16548.0	16566.0	16584.0	16602.0	16620.0	16638.0	16656.0	16674.0	16692.0	16710.0	16728.0	16746.0	16764.0	16782.0	16800.0	16818.0	16836.0	16854.0	16872.0	16890.0	16908.0	16926.0	16944.0	16962.0	16980.0	17000.0	17018.0	17036.0	17054.0	17072.0	17090.0	17108.0	17126.0	17144.0	17162.0	17180.0	17198.0	17216.0	17234.0	17252.0	17270.0	17288.0	17306.0	17324.0	17342.0	17360.0	17378.0	17396.0	17414.0	17432.0	17450.0	17468.0	17486.0	17504.0	17522.0	17540.0	17558.0	17576.0	17594.0	17612.0	17630.0	17648.0	17666.0	17684.0	17702.0	17720.0	17738.0	17756.0	17774.0	17792.0	17810.0	17828.0	17846.0	17864.0	17882.0	17900.0	17918.0	17936.0	17954.0	17972.0	17990.0	18008.0	18026.0	18044.0	18062.0	18080.0	18098.0	18116.0	18134.0	18152.0	18170.0	18188.0	18206.0	18224.0	18242.0	18260.0	18278.0	18296.0	18314.0	18332.0	18350.0	18368.0	18386.0	18404.0	18422.0	18440.0	18458.0	18476.0	18494.0	18512.0	18530.0	18548.0	18566.0	18584.0	18602.0	18620.0	18638.0	18656.0	18674.0	18692.0	18710.0	18728.0	18746.0	18764.0	18782.0	18800.0	18818.0	18836.0	18854.0	18872.0	18890.0	18908.0	18926.0	18944.0	18962.0	18980.0	19000.0	19018.0	19036.0	19054.0	19072.0	19090.0	19108.0	19126.0	19144.0	19162.0	19180.0	19198.0	19216.0	19234.0	19252.0	19270.0	19288.0	19306.0	19324.0	19342.0	19360.0	19378.0	19396.0	19414.0	19432.0	19450.0	19468.0	19486.0	19504.0	
-------	-------	-------	-------	-------	-------	-------	-------	-------	-------	-------	-------	-------	-------	-------	-------	-------	-------	-------	-------	-------	-------	-------	-------	-------	-------	-------	-------	-------	-------	-------	-------	--------	--------	--------	--------	--------	--------	--------	--------	--------	--------	--------	--------	--------	--------	--------	--------	--------	--------	--------	--------	--------	--------	--------	--------	--------	--------	--------	--------	--------	--------	--------	--------	--------	--------	--------	--------	--------	--------	--------	--------	--------	--------	--------	--------	--------	--------	--------	--------	--------	--------	--------	--------	--------	--------	--------	--------	--------	--------	--------	--------	--------	--------	--------	--------	--------	--------	--------	--------	--------	--------	--------	--------	--------	--------	--------	--------	--------	--------	--------	--------	--------	--------	--------	--------	--------	--------	--------	--------	--------	--------	--------	--------	--------	--------	--------	--------	--------	--------	--------	--------	--------	--------	--------	--------	--------	--------	--------	--------	--------	--------	--------	--------	--------	--------	--------	--------	--------	--------	--------	--------	--------	--------	--------	--------	--------	--------	--------	--------	--------	--------	--------	--------	--------	--------	--------	--------	--------	--------	--------	--------	--------	--------	--------	--------	--------	--------	--------	--------	--------	--------	--------	--------	--------	--------	--------	--------	--------	--------	--------	--------	--------	--------	--------	--------	--------	--------	--------	--------	--------	--------	--------	--------	--------	--------	--------	--------	--------	--------	--------	--------	--------	--------	--------	--------	--------	--------	--------	--------	--------	--------	--------	--------	--------	--------	--------	--------	--------	--------	--------	--------	--------	--------	--------	--------	--------	--------	--------	--------	--------	--------	--------	--------	--------	--------	--------	--------	--------	--------	--------	--------	--------	--------	--------	--------	--------	--------	--------	--------	--------	--------	--------	--------	--------	--------	--------	--------	--------	--------	--------	--------	--------	--------	--------	--------	--------	--------	--------	--------	--------	--------	--------	--------	--------	--------	--------	--------	--------	--------	--------	--------	--------	--------	--------	--------	--------	--------	--------	--------	--------	--------	--------	--------	--------	--------	--------	--------	--------	--------	--------	--------	--------	--------	--------	--------	--------	--------	--------	--------	--------	--------	--------	--------	--------	--------	--------	--------	--------	--------	--------	--------	--------	--------	--------	--------	--------	--------	--------	--------	--------	--------	--------	--------	--------	--------	--------	--------	--------	--------	--------	--------	--------	--------	--------	--------	--------	--------	--------	--------	--------	--------	--------	--------	--------	--------	--------	--------	--------	--------	--------	--------	--------	--------	--------	--------	--------	--------	--------	--------	--------	--------	--------	--------	--------	--------	--------	--------	--------	--------	--------	--------	--------	--------	--------	--------	--------	--------	--------	--------	--------	--------	--------	--------	--------	--------	--------	--------	--------	--------	--------	--------	--------	--------	--------	--------	--------	--------	--------	--------	--------	--------	--------	--------	--------	--------	--------	--------	--------	--------	--------	--------	--------	--------	--------	--------	--------	--------	--------	--------	--------	--------	--------	--------	--------	--------	--------	--------	--------	--------	--------	--------	--------	--------	--------	--------	--------	--------	--------	--------	--------	--------	--------	--------	--------	--------	--------	--------	--------	--------	--------	--------	--------	--------	--------	--------	--------	--------	--------	--------	--------	--------	--------	--------	--------	--------	--------	--------	--------	--------	--------	--------	--------	--------	--------	--------	--------	--------	--------	--------	--------	--------	--------	--------	--------	--------	--------	--------	--------	--------	--------	--------	--------	--------	--------	--------	--------	--------	--------	--------	--------	--------	--------	--------	--------	--------	--------	--------	--------	--------	--------	--------	---------	---------	---------	---------	---------	---------	---------	---------	---------	---------	---------	---------	---------	---------	---------	---------	---------	---------	---------	---------	---------	---------	---------	---------	---------	---------	---------	---------	---------	---------	---------	---------	---------	---------	---------	---------	---------	---------	---------	---------	---------	---------	---------	---------	---------	---------	---------	---------	---------	---------	---------	---------	---------	---------	---------	---------	---------	---------	---------	---------	---------	---------	---------	---------	---------	---------	---------	---------	---------	---------	---------	---------	---------	---------	---------	---------	---------	---------	---------	---------	---------	---------	---------	---------	---------	---------	---------	---------	---------	---------	---------	---------	---------	---------	---------	---------	---------	---------	---------	---------	---------	---------	---------	---------	---------	---------	---------	---------	---------	---------	---------	---------	---------	---------	---------	---------	---------	---------	---------	---------	---------	---------	---------	---------	---------	---------	---------	---------	---------	---------	---------	---------	---------	---------	---------	---------	---------	---------	---------	---------	---------	---------	---------	---------	---------	---------	---------	---------	---------	---------	---------	---------	---------	---------	---------	---------	---------	---------	---------	---------	---------	---------	---------	---------	---------	---------	---------	---------	---------	---------	---------	---------	---------	---------	---------	---------	---------	---------	---------	---------	---------	---------	---------	---------	---------	---------	---------	---------	---------	---------	---------	---------	---------	---------	---------	---------	---------	---------	---------	---------	---------	---------	---------	---------	---------	---------	---------	---------	---------	---------	---------	---------	---------	---------	---------	---------	---------	---------	---------	---------	---------	---------	---------	---------	---------	---------	---------	---------	---------	---------	---------	---------	---------	---------	---------	---------	---------	---------	---------	---------	---------	---------	---------	---------	---------	---------	---------	---------	---------	---------	---------	---------	---------	---------	---------	---------	---------	---------	---------	---------	---------	---------	---------	---------	---------	---------	---------	---------	---------	---------	---------	---------	---------	---------	---------	---------	---------	---------	---------	---------	---------	---------	---------	---------	---------	---------	---------	---------	---------	---------	---------	---------	---------	---------	---------	---------	---------	---------	---------	---------	---------	---------	---------	---------	---------	---------	---------	---------	---------	---------	---------	---------	---------	---------	---------	---------	---------	---------	---------	---------	---------	---------	---------	---------	---------	---------	---------	---------	---------	---------	---------	---------	---------	---------	---------	---------	---------	---------	---------	---------	---------	---------	---------	---------	---------	---------	---------	---------	---------	---------	---------	---------	---------	---------	---------	---------	---------	---------	---------	---------	---------	---------	---------	---------	---------	---------	---------	---------	---------	---------	---------	---------	---------	---------	---------	---------	---------	---------	---------	---------	---------	---------	---------	---------	---------	---------	---------	---------	---------	---------	---------	---------	---------	---------	---------	---------	---------	---------	---------	---------	---------	---------	---------	---------	---------	---------	---------	---------	---------	---------	---------	---------	---------	---------	---------	---------	---------	---------	---------	---------	---------	---------	---------	---------	---------	---------	---------	---------	---------	---------	---------	---------	---------	---------	---------	---------	---------	---------	---------	---------	---------	---------	---------	---------	---------	---------	---------	---------	---------	---------	---------	---------	---------	---------	---------	---------	---------	---------	---------	---------	---------	---------	---------	---------	---------	---------	---------	---------	---------	---------	---------	---------	---------	---------	---------	---------	---------	---------	---------	---------	---------	---------	---------	---------	---------	---------	---------	---------	---------	---------	---------	---------	---------	---------	---------	---------	---------	---------	---------	---------	---------	---------	---------	---------	---------	---------	---------	---------	---------	---------	---------	---------	---------	---------	---------	---------	---------	---------	---------	---------	---------	---------	---------	---------	---------	---------	---------	---------	--

PEAR PLUM AND STONE (SEE PG. 100) SUMMARY FOR MULTIPLE PLAN-RATIO ECONOMIC COMPUTATIONS
 DATA FOR EACH POINT ARE LISTED (CUBIC METERS PER SECOND)
 AREA IN CUBIC METERS (CUBIC MILES PER HOUR)

COLLECTION	STATION	AREA	PLAN RATIO	RATIO	RATIOS APPLIED TO FLOWS	
					RATIO	PLAN RATIO
M.V. STATION AT	1119	1.70	1.00	1.00	1.00	1.00
	1119	1.70	1.00	1.00	1.00	1.00
COLLECT	1119	1.70	1.00	1.00	1.00	1.00
	1119	1.70	1.00	1.00	1.00	1.00

END

DATE
FILMED

12-81

DTIC