

AD-A099 238

HARRY DIAMOND LABS ADELPHI MD
USER'S MANUAL FOR ELECTROMAGNETIC PULSE COUPLING CODE TEMPO. (U)
FEB 81 W J STARK, D A CLARK, R E STRAYER

F/G 20/14

UNCLASSIFIED

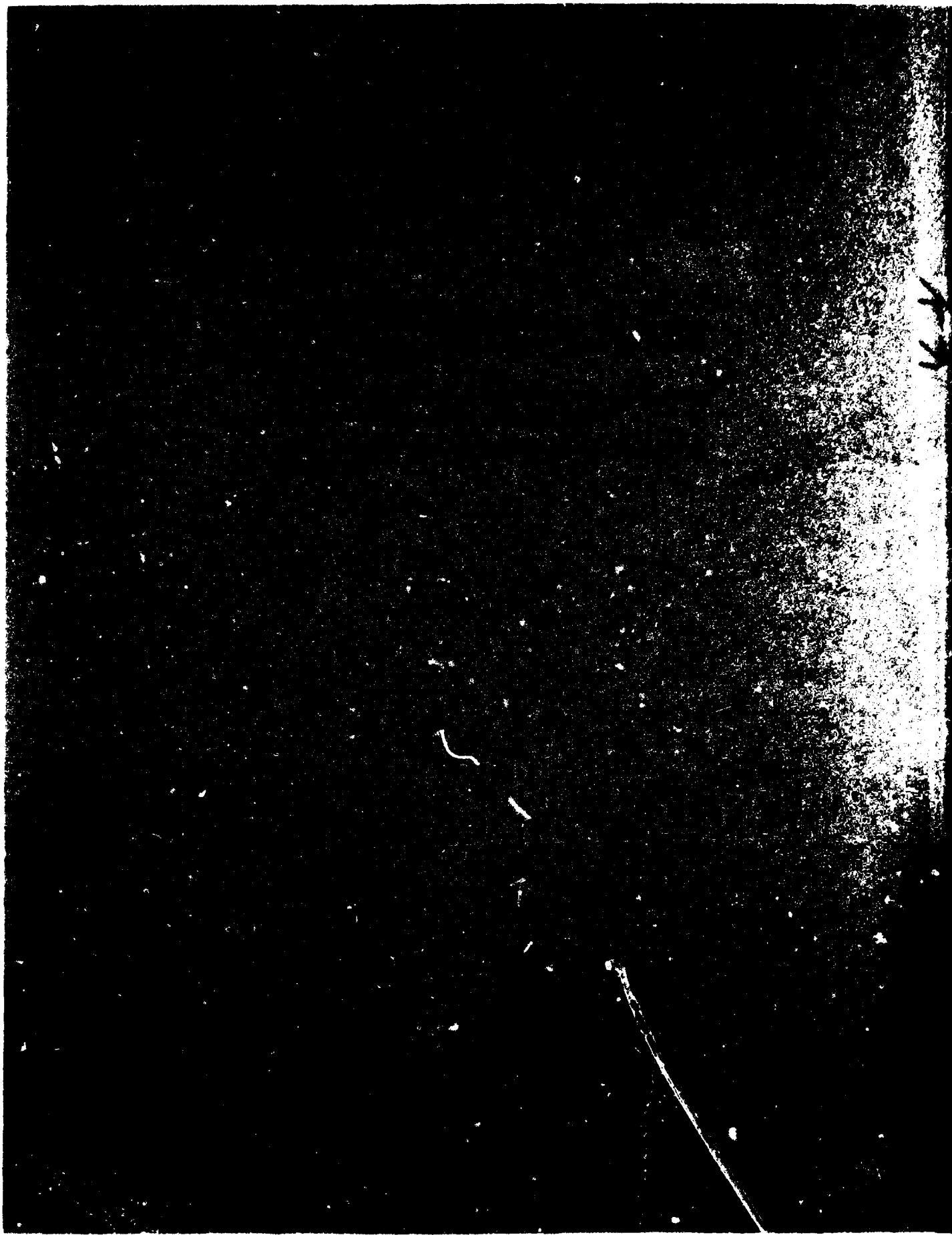
HDL-TM-81-2

NL

1 of 1
AN
038308

END
DATE
FILMED
6-81
DTIC

AD A099238



UNCLASSIFIED

SECURITY CLASSIFICATION OF THIS PAGE (When Data Entered)

REPORT DOCUMENTATION PAGE		READ INSTRUCTIONS BEFORE COMPLETING FORM
1. REPORT NUMBER 14 HDL-TM-81-2 ✓	2. GOVT ACCESSION NO. AD-A0559238	3. RECIPIENT'S CATALOG NUMBER
4. TITLE (and Subtitle) User's Manual for Electromagnetic Pulse Coupling Code TEMPO	5. TYPE OF REPORT & PERIOD COVERED 4 Technical Memorandum	6. PERFORMING ORG. REPORT NUMBER
7. AUTHOR(s) 30 Werner J. Stark David A. Clark Roy E. Strayer, Jr.	8. CONTRACT OR GRANT NUMBER(s)	10. PROGRAM ELEMENT, PROJECT, TASK AREA & WORK UNIT NUMBERS DA: 1L162120AH25 Program Etc: 6.21.20.A
9. PERFORMING ORGANIZATION NAME AND ADDRESS Harry Diamond Laboratories 2800 Powder Mill Road Adelphi, MD 20783	11. CONTROLLING OFFICE NAME AND ADDRESS U.S. Army Materiel Development and Readiness Command Alexandria, VA 22333	12. REPORT DATE 1 February 81
14. MONITORING AGENCY NAME & ADDRESS (if different from Controlling Office)	13. NUMBER OF PAGES 37	15. SECURITY CLASS. (of this report) UNCLASSIFIED
16. DISTRIBUTION STATEMENT (of this Report) Approved for public release; distribution unlimited.		15a. DECLASSIFICATION/DOWNGRADING SCHEDULE
17. DISTRIBUTION STATEMENT (of the abstract entered in Block 20, if different from Report)		
18. SUPPLEMENTARY NOTES HDL Project: X759E3 DRCMS Code: 612120 H250011		
19. KEY WORDS (Continue on reverse side if necessary and identify by block number) EMP Norton equivalent circuit Interactive computer code EMP vulnerability assessment Electromagnetic coupling Thevenin equivalent circuit Antenna response Electromagnetic pulse		
20. ABSTRACT (Continue on reverse side if necessary and identify by block number) A computer code, TEMPO, has been developed to aid in the solution of electromagnetic pulse (EMP) coupling problems. The code is general in nature. It provides approximate solutions to simplified, but practical problems that are commonly encountered during system evaluations. With the aid of TEMPO, an engineer may rapidly determine which sources of coupling are a threat to his system and, consequently, spend more effort on solving those problems than searching for them. This report depicts the organization and the operation of TEMPO on Harry Diamond Laboratories' IBM System/370.		

DD FORM 1 JAN 73 1473 EDITION OF 1 NOV 65 IS OBSOLETE

UNCLASSIFIED

1 SECURITY CLASSIFICATION OF THIS PAGE (When Data Entered)

1.5.0

CONTENTS

	Page
1. INTRODUCTION.....	5
2. CODE ORGANIZATION.....	5
3. DESCRIPTION OF TEMPO PROGRAMS.....	6
3.1 Interactive Programs.....	6
3.1.1 Program INPUT.....	6
3.1.2 Program DRIVE.....	6
3.1.3 Features of Interactive Programs.....	7
3.2 Batch Programs.....	7
3.2.1 Procedure IO.....	7
3.2.2 Program FRQ.....	8
3.2.3 Program ZANT.....	8
3.2.4 Program FIELD.....	8
3.2.5 Program CONVOL.....	8
3.2.6 Program FOURIER.....	8
3.2.7 Program OUTPUT.....	9
4. METHODS FOR EXCHANGING DATA BETWEEN BATCH PROGRAMS.....	9
4.1 Definition of Temporary Data Sets.....	9
4.2 Description of IO Data Cards.....	10
4.3 Definitions for Input-Output Flags.....	10
4.4 Flag Card.....	11
4.5 Definition of ARRAY Parameters (PARAM) 1 to 20.....	17
4.6 Definitions of Field Parameters (FPAR) 1 to 18.....	19
APPENDIX A.—PROCEDURES FOR COMPUTER CODE TEMPO.....	23
DISTRIBUTION.....	33

3

Approved for Project 68481 by JTB Date 1/17/68 Distribution	<input checked="" type="checkbox"/> <input type="checkbox"/> <input type="checkbox"/>
By _____ Distribution/	
Availability Codes	
Dist	Avail and/or Special
A	

FIGURES

	<u>Page</u>
1 Definition of flags IC, ID (mainline—INPUT).....	11
2 Definition of flags IA, IB, IC, IE, IF (CABLE).....	12
3 Definition of flags IA, IE, IF, IN (ANTENNA).....	13
4 Definition of flags IA, IE (APERTURE).....	14
5 Definition of flags IA, IB (DATA).....	14
6 Definition of flags IK, IM, IN (mainline—DRIVE).....	15
7 Definition of flag IL (FUNCTION).....	16
8 Definition of flag IL (SIMULATOR).....	16

1. INTRODUCTION

Most of the presently available codes for computing the solution to an electromagnetic transient problem are written to solve a specific class of problems. If one is interested in solutions to several different types of problems, one must acquire familiarity with a number of different codes. Each code must be examined for its range of validity, and it may have to be modified to fit specific needs. This process may be prohibitively time-consuming, particularly if one is interested in approximate solutions for a wide variety of problems, rather than a very accurate solution to a specialized case. It is the former type of solution, combined with information about the antenna or cable impedance, that often suffices for a vulnerability analysis of a given circuit attached to the antenna or the cable.

The computer code TEMPO was developed with the objective of providing approximate solutions for a wide class of electromagnetic pulse (EMP) interaction problems in a form usable by a circuit analysis code. The application of TEMPO was to be simple and efficient so that the user would require a minimum amount of familiarity with the code, and the code was to be flexible so that a wide variety of solutions could be performed for a number of different conditions. Finally, the problems addressed by TEMPO were to be practical cases that could ultimately be related to commonly occurring problems in an EMP vulnerability assessment.

2. CODE ORGANIZATION

Since TEMPO is used in the EMP vulnerability assessment of complex military systems, it is organized so that its application is an integral part of such an assessment. To do so, the EMP coupling source is represented in terms of either a Thevenin or a Norton equivalent circuit, and a circuit analysis is performed on the equivalent circuit and its load. Since the load circuit usually contains nonlinear elements, the circuit analysis is performed in the time domain by using available network analysis codes for circuits with nonlinear elements.

By separating the EMP vulnerability assessment into two parts consisting of the source equivalent circuit and the load circuit, separate teams of investigators can be assigned to the two types of problems. Initially, the coupling analysis can be performed by using simple linear loads for the equivalent circuit, and the load circuit can be analyzed independently from the coupling source by using simple driving sources. After the coupling source equivalent circuit and the load circuit are adequately modeled, they can be combined for a vulnerability assessment.

Most computer programs using a large scale computer (like the Control Data Corp. (CDC) 6000 series or the IBM System/360 or 370 family of computers) are executed in a batch mode. This mode requires that the user prepare a number of control cards for running the program and data cards for supplying the input parameters to the program. Since the process of preparing such cards can be time-consuming, TEMPO allows for an option to generate the necessary information for running the batch job using two interactive programs. These programs are easily executed at a remote teletypewriter terminal and are designed to aid the user to accurately describe the problem that he wants to solve.

With the interactive portion of initiating the batch job completed, the job can be placed in the batch input queue at the central processing site, and output depends on the normal turnaround

time at the computer center. By running the programs in batch mode, there are no limitations on the size of the programs that can be executed, except for those normally applicable to a batch job. In principle, TEMPO could initiate any pertinent EMP interaction code previously run in a batch mode on a large scale computer.

The result of the computation initiated by TEMPO is normally obtainable in the form of a plot of the transient response. The plot devices can be a remote line printer, a remote x-y bed plotter, or a remote teletypewriter. By using the teletypewriter, it is possible to run TEMPO and obtain an output even if the only remote terminal available to the user is a teletypewriter.

The programs described in this report were written to run on an IBM System/370 Model 168 computer using the time sharing option (TSO)¹ for the interactive portions. They were originally developed to run on a CDC Model 6700 computer using INTERCOM² for the interactive portions. Hence, TEMPO can be run on either system with only a few minor changes from one version to the other.

3. DESCRIPTION OF TEMPO PROGRAMS

3.1 *Interactive Programs*

The present version of TEMPO is written to provide approximate solutions to basic practical coupling problems for interactions with cables, antennas, and apertures. There are many programs and subroutines used for performing the calculations. However, the user need concern himself only with the following two interactive programs for initiating the computation process.

3.1.1 *Program INPUT*

Interactive program INPUT allows the user to select one of five options. Three of the options (ANTENNA, CABLE, and APERTURE) lead to solutions of coupling problems by using theoretical models. The CW (continuous wave) option uses measured frequency-domain data to describe the coupling. The FIELD option does not solve a coupling problem, but allows the user to access program DRIVE without unwanted computations. After specifying a coupling problem, the user is asked to supply information appropriate to that problem. For example, if the choice is ANTENNA, he is asked to describe the antenna, specify the load at the terminal, and add other facts. The user has an option to obtain a brief synopsis of the model used for the computation, including references for additional information on the problem being solved. Once all the parameters for a given problem are defined, the user is asked if he wants output for intermediate steps in the computation. These could be, for example, the frequency spectrum for the transfer function, the impulse response, or the driving field. Finally, he must specify the output medium for any intermediate steps and the transient response for the problem.

3.1.2 *Program DRIVE*

Interactive program DRIVE prompts the user to enter the type of incident field to be used for the problem. Several options for the incident field are available:

¹OSVS2 TSO Command Language Reference, IBM Technical News Letter GC28 0646.3 (July 1976)
²6000 Series INTERCOM 3 Reference Manual, Control Data Corp. Publication 60252800, Rev. B (January 1972)

- a. A data file, such as an experimentally determined incident field
- b. One of several types of analytic functions (a Gaussian pulse, a sum of two or four exponential curves, a damped sinusoid, a square wave, or a step wave)
- c. A high altitude incident field whose wave shape can have one of the six functional forms in option b
- d. An approximation to the surface burst EMP

Once the choice of the incident field has been made, there is an option to compute the driving field either in the time domain or in the frequency domain. If the incident field is determined from experimental data in the time domain, then there is no choice. However, if the incident field is an analytic function, then computational error generally is minimized by specifying the driving field to be computed in the frequency domain.

3.1.3 Features of Interactive Programs

An attempt has been made to anticipate questions that a user might have during an interactive session, and information is provided to the user in response to a HELP command. For example, the user may be asked to specify the type of coupling problem. If he issues a HELP command, the program gives him information on what types of coupling problems can be solved by using TEMPO.

After the interactive session is completed, a batch job is generated. This job can be submitted through TSO to the batch input queue by issuing a SUBMIT 'HK3010.JOB.CNTL' command. Alternatively, if a punched deck of the job was requested during the interactive session, this punched deck can be submitted independently of TSO. Once a punched deck for the job has been obtained, this job can be submitted through a card reader at a batch terminal.

3.2 Batch Programs

The remaining programs perform the numerical computations and generate an output for the problem specified. They consist of several independent mainline programs and subroutines that pass pertinent data to one another via temporary data sets. Which program is executed depends on the type of problem being solved. For example, the INVERT (inverse Fourier transform) program may or may not be required, depending on whether or not the computations are performed in the time domain. The following sections and appendix A describe the mainline programs and their subroutines.

3.2.1 Procedure IO

Although not a FORTRAN program, procedure IO initiates all of the files to be used for inputting, outputting, and transferring data. This procedure creates a file on unit 2 called the IO file and then stores the input-output control (IO) data on the file. The IO file is then read by each program. It both passes pertinent coupling parameters from one program to the next and controls the task of each program. The IO file also stores any measured data submitted with the job.

3.2.2 Program FRQ

Mainline program FRQ reads the IO file, defines the problem to be solved, and calls the appropriate subroutine to compute the frequency spectrum for the response. After the frequency spectrum is computed, the resulting effective height and antenna impedance are written on two separate files for further analysis. Subsequent Fourier transforms are computed for 2048 equispaced frequency points by using the fast Fourier transform (FFT) or for 256 equispaced frequency points by using the LFILON transform.

3.2.3 Program ZANT

Program ZANT computes a lumped parameter network (LPN) equivalent to the antenna impedance for the problem being solved. The program is used if a time-domain equivalent circuit is required to represent the coupling problem. It applies when the antenna impedance shows multiple isolate resonances, so that the antenna impedance is easily represented as a series of parallel resonant circuits.

3.2.4 Program FIELD

Program FIELD computes the incident electric field either in the frequency domain or in the time domain as specified by the user. The subsequent convolution with the impulse response for the problem is performed in the corresponding frequency or time domain. The options available for computing various types of fields have been described in the discussion of interactive program DRIVE.

3.2.5 Program CONVOL

Program CONVOL computes the convolution of two functions, (1) the incident field and (2) the impulse response for current or voltage for a given coupling problem. For a field scattered by an aperture, the second function is the impulse response of the aperture. If both functions are in the frequency domain, the product remains in the frequency domain. If both functions are in the time domain, the convolution integral is performed by using a simple numerical integration in the time domain.

3.2.6 Program FOURIER

Program FOURIER transforms any one of three types of frequency spectra from the frequency domain to the time domain: (1) the effective height of the current or voltage for a given coupling problem or the transfer function for the field scattered by an aperture, (2) the electric field component for the incident or ground-interacted field, or (3) the product of two functions such as the incident field and the effective height of an antenna.

The Fourier transform is performed by using either (1) the Cooley-Tukey³ algorithm for the FFT or (2) a numerical integration combining trapezoidal and Filon techniques (LFILON).⁴ The FFT is used in most cases, and the LFILON transform is available to verify the results obtained by

³J. W. Cooley and J. W. Tukey, *An Algorithm for the Machine Calculation of Complex Fourier Series*, *Mathematics of Computation*, **19** (April 1965)

⁴D. G. Dudley, *Numerical Inversion of the Fourier Transform. A Combination Trapezoidal and Filon Technique*, Lawrence Livermore Laboratories, Livermore, CA, UCRL-51878 (1975)

using the FFT. The FFT is performed by using 2048 equispaced frequency points, whereas the LFILON transform is performed by using 256 points. At present, the frequency points are equispaced for the LFILON transform. However, in general, the LFILON transform can be used with an arbitrary number of points with arbitrary spacings in the time domain, the frequency domain, or both.

3.2.7 Program OUTPUT

Program OUTPUT controls the output processing for a given run. The various selected computed functions are plotted on a bed plotter, a line printer, or a teletypewriter, depending on which device was specified as an output device. The plot routines are described elsewhere for the bed plotter⁵ and for plots on the printer.⁶

4. METHODS FOR EXCHANGING DATA BETWEEN BATCH PROGRAMS

Since TEMPO is a composite of various single purpose programs, the data must be passed from one program to the next. Likewise, the instruction set and the problem parameters must be accessed by each program. The following sections describe the input-output controls, the parameters, and the file allocations.

4.1 Definition of Temporary Data Sets

<u>Tape unit</u>	<u>File name</u>	<u>Type of data</u>
1	—	Temporary data storage used by program OUTPUT
2	IO	Input-output and problem definition parameters
3	FIMP	Frequency-domain impulse response spectrum
4	IMPLS	Time-domain impulse response spectrum
5	FIELD	Time-domain electric field
6	PRINT	Output to printer or teletypewriter
7	SYSOUT=B	Output to bed plotter
8	FFIELD	Frequency-domain electric field
9	FRESP	Frequency-domain response to incident field
10	RESP	Time-domain response to incident field
11	ZA	Antenna and cable impedance

⁵T. V. Noon, *Enhanced Plotting Software for Use with the Houston instrument COMPLIT Plotter*, Harry Diamond Laboratories HDL-TM-75-32 (December 1975).

⁶Egon Marx, *Printer Version of Plots Made by an Incremental Plotter*, Harry Diamond Laboratories HDL-TM-75-33 (December 1975).

4.2 Description of IO Data Cards

<u>Card</u>	<u>Label</u>	<u>Description</u>
1	t	Time increment for computing transient wave shape
2	IOFLAG (I), I = 1 to 10	Flags to indicate which type of output and which type of output medium are desired
3	FLAG (I), I = 1 to 20	Flags to describe type of problem to be solved and type of field to be computed; also referred to as FLAG IA, IB, ..., IR
4 to 7	PARAM (I), I = 1 to 20	Parameters to describe geometry and physics of scattering object
8 to 10	FPAR (I), I = 1 to 18	Parameters to describe incident electric field for problem

4.3 Definitions for Input-Output Flags

<u>Term</u>	<u>Definition</u>
MULCURVE	IOFLG9 = 1, 2, ..., Depending on whether RESP, FIELD, ..., contain multiple curves
NCURVE	IOFLG10 = Number of curves - 1 that are to be plotted if MULCURVE ≠ 0
FSPEC	IOFLG4 = 0 plot magnitude and phase = 1 plot real and imaginary

IOFLG(I), I = 1, 2, 3, 5, 6, 7, 8, are the outputs of files RESP, FIELD, IMPLS, FRESP, FFIELD, FIMP, and ZA, respectively, and are plotted in accordance with IOFLG4 and the following:

Linear x and y scales:

IOFLG(I) = 1 plot output on teletypewriter
= 2 plot output on printer
= 3 plot output on plotter

Allowed values for IOFLG(I) I = 1, 2, 3, 5, 6, 7, 8

Linear x scale, log y scale for magnitude, real, imaginary and

Linear x scale, linear y scale for phase:

IOFLG(I) = 5 plot output on printer
= 6 plot output on plotter

Allowed values for IOFLG(I) I = 5, 6, 7, 8

Log x scale, log y scale for magnitude, real, imaginary and

Log x scale, linear y scale for phase:

IOFLG(I) = 8 plot on printer
= 9 plot on plotter

Allowed values for IOFLG(I) I = 5, 6, 7, 8

4.4 Flag Card

The flag card has 20 integers in columns 1 to 20: flags IA to IT. The flags control the routing within the mainline programs and the subroutines so that the desired problem will be solved. Figures 1 to 8 indicate the uses of the flags.

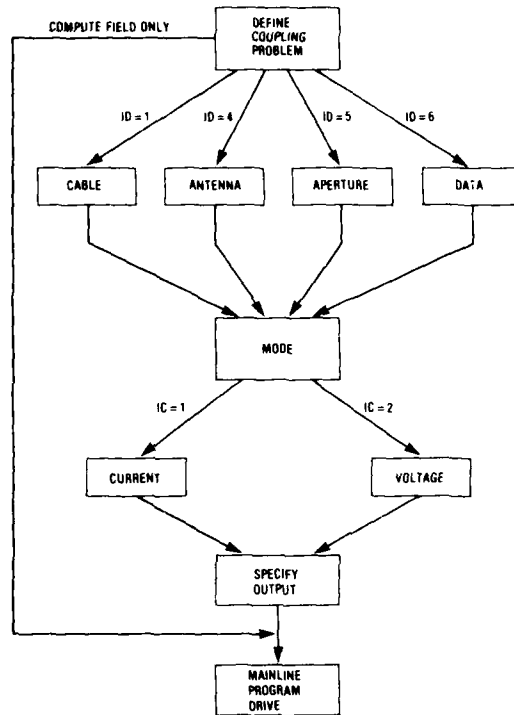


Figure 1. Definition of flags IC, ID (mainline—INPUT).

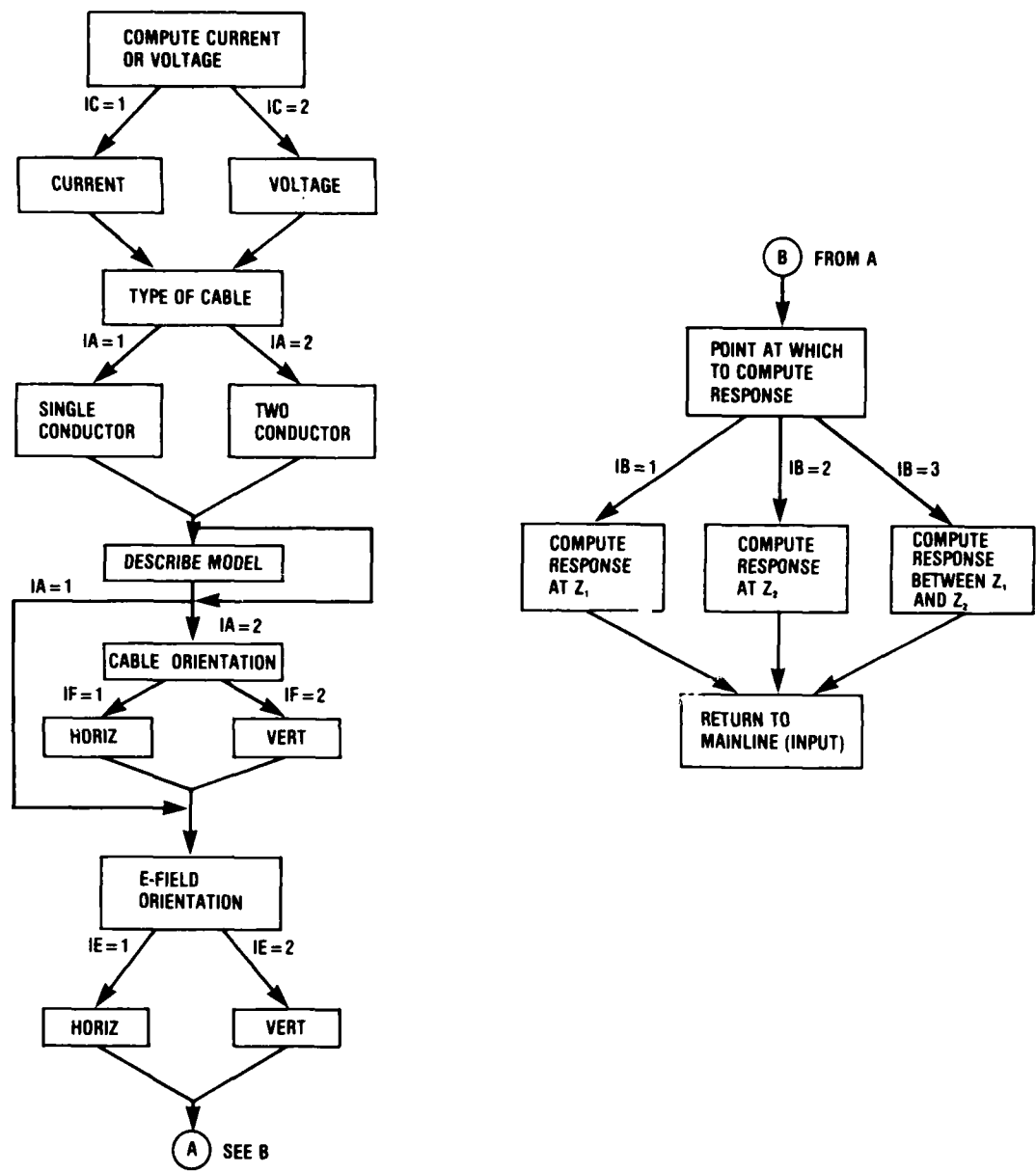


Figure 2. Definition of flags IA, IB, IC, IE, IF (CABLE).

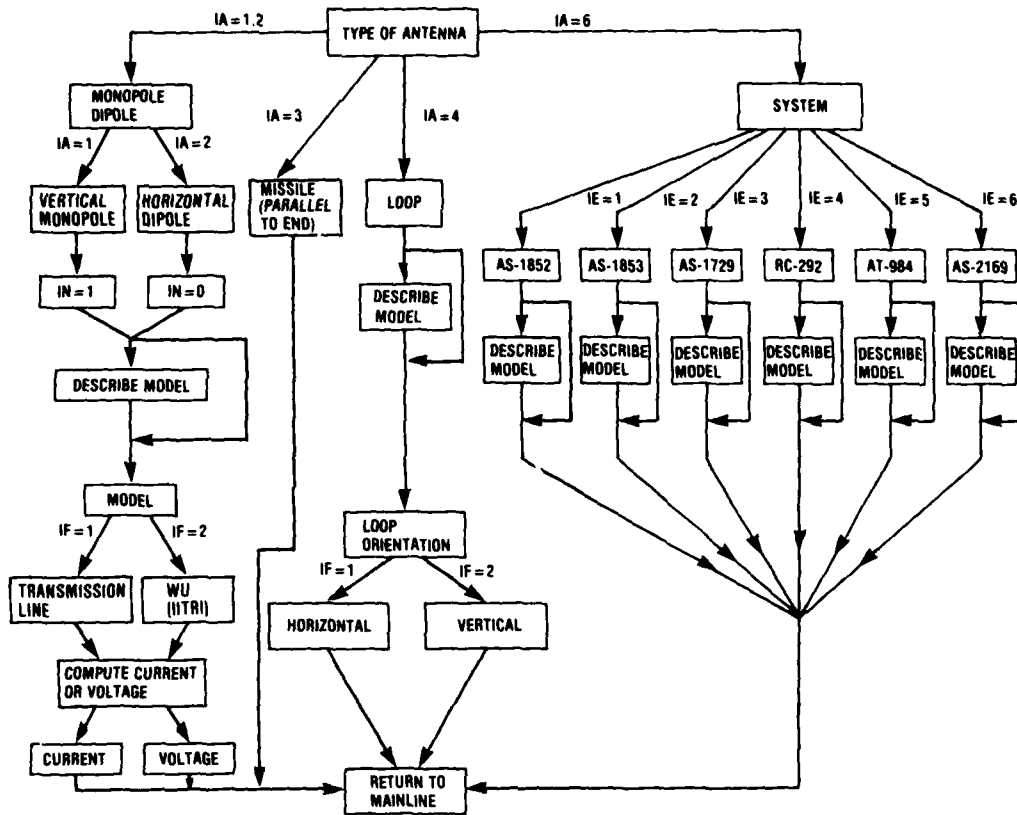


Figure 3. Definition of flags IA, IE, IF, IN (ANTENNA).

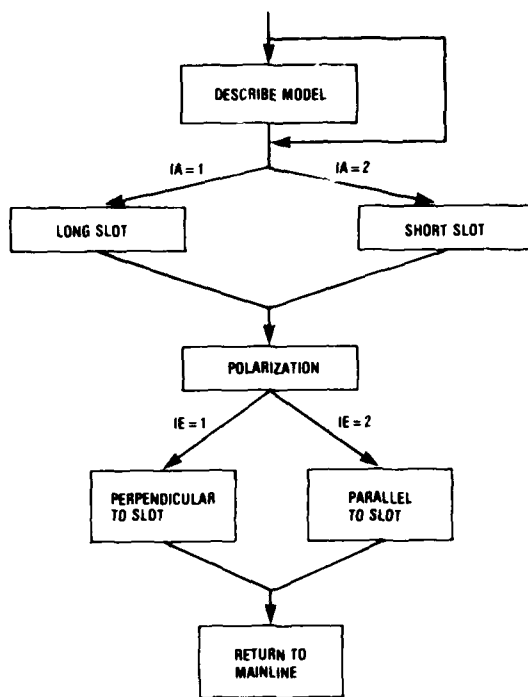


Figure 4. Definition of flags IA, IE (APERTURE).

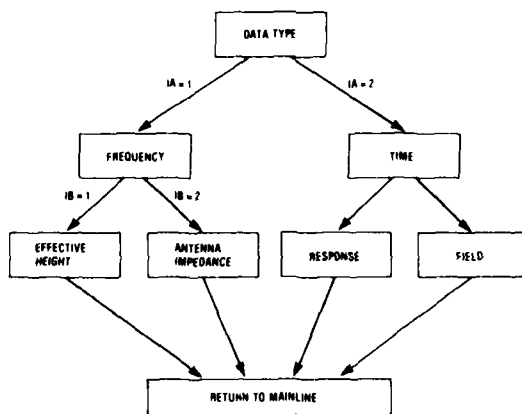


Figure 5. Definition of flags IA, IB (DATA).

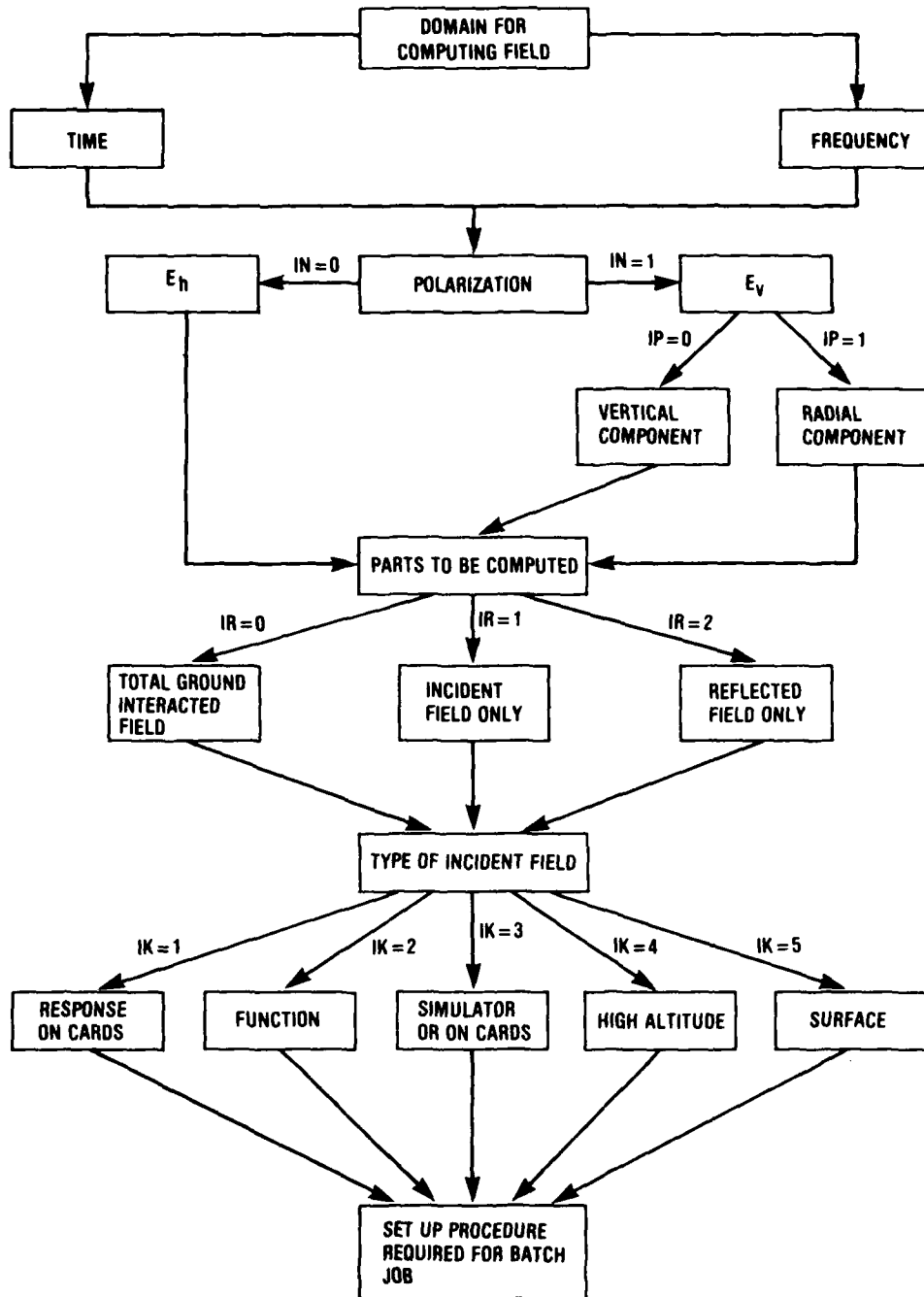


Figure 6. Definition of flags IK, IM, IN (mainline—DRIVE).

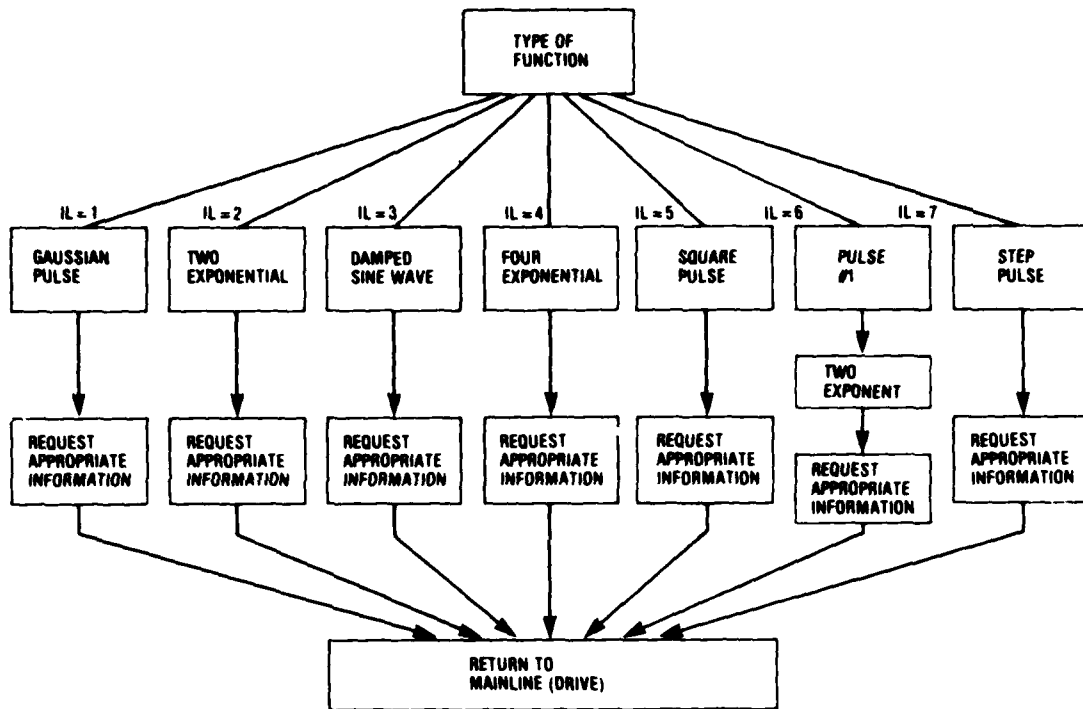


Figure 7 Definition of flag IL (FUNCTION)

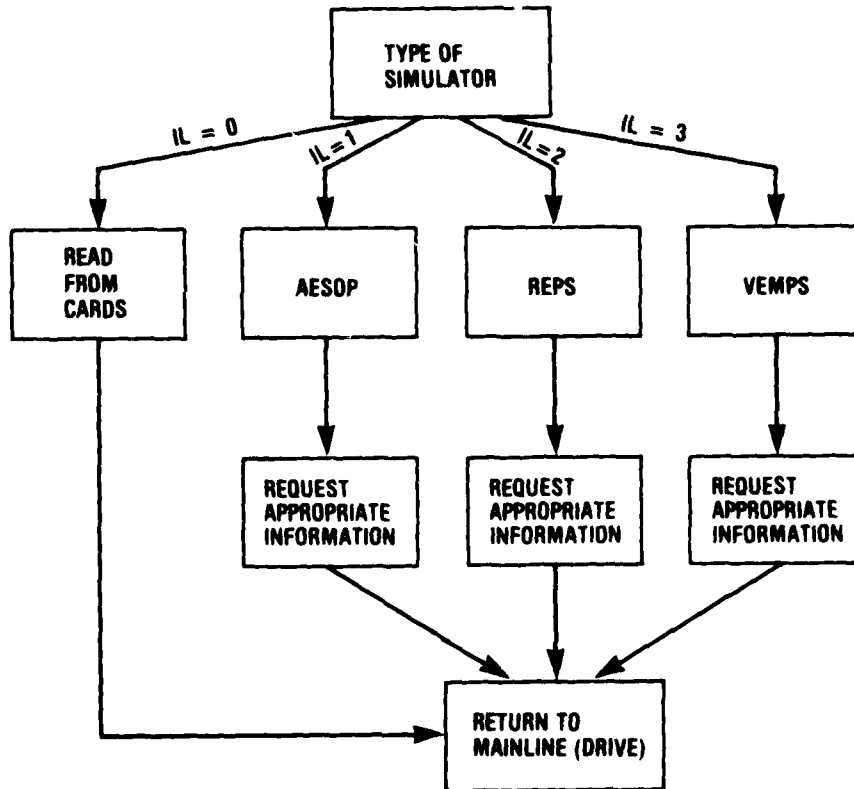


Figure 8. Definition of flag IL (SIMULATOR)

The following flags are used in addition to those defined in figures 1 to 8.

<u>Flag</u>	<u>Description</u>
IH	Computation of equivalent network for antenna impedance IH = 0 computation not required IH = 1 computation required
IS	Method used for computing Fourier transform IS = 0 use FFT IS = 1 use LFILON transform
IT	Debug option IT = 0 no debug option IT = 1 debug option desired

4.5 Definition of ARRAY Parameters (PARAM) 1 to 20

<u>Parameter</u>	<u>Definition</u>
PARAM(1)	= RHO (resistivity) definition when solving cable problem RHO = $-5E-5$ if analytical model C1 is used RHO = $1/SIGMA$ (SIGMA = ground conductivity) if analytical model C2 is used
PARAM(2)	For cable problem, = R1 of series resistance-inductance-capacitance (RLC) at cable terminals (ohms). For antenna problem, = R of RLC load at antenna feed point (ohms) For continuous wave (cw) problem, = R = load resistance (ohms) For aperture problem, = H = length of aperture (meters).
PARAM(3)	For cable problem, = L1 of series RLC at cable terminals (henries) For antenna problem, = L of RLC load at antenna feed point (henries) For cw problem, = IND = load inductance (henries) For aperture problem, = W = width of aperture (meters)
PARAM(4)	For cable problem, = C1 of series RLC at cable terminals (farads) For antenna problem, = C of RLC load at antenna feed point (farads) For cw problem, = C = load capacitance (farads) For aperture problem, = R = distance from aperture for computing electric field (meters)
PARAM(5)	For cable problem, = R2 of series RLC at cable terminals (ohms) For antenna problem, = H = length of antenna for monopole and dipole antennas (meters) = B = loop radius for loop antennas (meters) = H = missile length for missile problems (meters) = H1 = 0.3 for AS1852 antenna, = 0.35 for AS1852 antenna (meters)

<u>Parameter</u>	<u>Definition</u>
PARAM(6)	For cable problem, = L2 of series RLC at cable terminals (henries). For antenna problem, = D = antenna diameter for dipoles or monopoles (millimeters). = R = wire radius for loop antennas (meters). = A = missile radius for missile problem (meters). For cw problem, = RES = antenna resistance (ohms).
PARAM(7)	For cable problem, = C2 of series RLC at cable terminals (farads). For antenna problem, = X = H*XIN (H = missile length) representing relative position between missile tail and missile nose for current calculations (XIN = decimal number between 0. and 1.). = X = HP*XIN (HP = missile plume length) representing relative position between plume tip and missile tail for current calculations (XIN = decimal number between -1. and 0.). = LL = 2000 for system antennas AS1852 and AS1853.
PARAM(8)	For cable problem, = L = cable length (meters). For antenna problem, = HP = plume length for missile problem (meters). = ZO1 = 50 for system antennas.
PARAM(9)	For cable problem, = X = value between 0. and 1. representing fractional distance along cable for computing response. For antenna problem, = R1 of series RLC termination on cable connected to antenna for system antennas (ohms). = SIGMA = plume conductivity for missile problems. = 1.E7 (automatically) if plume length = 0.
PARAM(10)	For cable problem, = H = height of cable aboveground (meters). For antenna problem, = HG = height of antenna terminal aboveground for system, loop, monopole, and dipole antennas (meters). = HG = height of missile aboveground for missile problem (meters). For cw problem, = HG = height of test point aboveground (if antenna resistance is greater than zero) (meters). For aperture problem, = HG = height of center of aperture aboveground (meters).
PARAM(11)	For cable problem, = D = conductor diameter (meters). For antenna problem, = L1 of series RLC termination on cable connected to antenna for system antennas (henries). = ALPHA = damping constant for missile problems.
PARAM(12)	For cable problem, = S = separation distance between cables for two-conductor cable (meters). For antenna problem, = RP1 = inner plume radius for missile problem (meters). = C1 of series RLC termination on cable connected to antenna for system antennas (farads).

<u>Parameter</u>	<u>Definition</u>
PARAM(13)	For antenna problem, = outer plume radius for missile problem (meters). For frequency plot, = multiple of frequency increment (DF).
PARAM(14)	For frequency plot, = maximum frequency for response plot (hertz).
PARAM(15)	For frequency plot, = maximum frequency for field plot (hertz).
PARAM(16)	For frequency plot, = maximum frequency for impulse plot (hertz).
PARAM(17)	For frequency plot, = maximum frequency for impedance plot (hertz).
PARAM(18)	For time-domain output, = maximum time for transient output (hertz).
PARAM(19)	For time-domain output, = maximum time for field plot (hertz).
PARAM(20)	For time-domain output, = maximum time for impulse plot (hertz).

4.6 Definitions of Field Parameters (FPAR) 1 to 18

<u>Parameter</u>	<u>Definition</u>
FPAR (1)	For function-described field, = peak amplitude (volts/meter) = YMAX. For simulator field, = YMAX = peak free field at 50 m. For surface field, = YMAX.
FPAR (2)	For Gaussian field, = WIDTH = pulse width (nanoseconds). For two-exponential field, = ALPHA = one of two decay constants (per second). For sine-function field, = OMEGA = $(2 \cdot \text{PI}) / \text{PERIOD} \cdot 1.E9$ (PERIOD in nanoseconds). For four-exponential field, = ALPHA = one of four decay constants. For square-wave field, = WIDTH = pulse width (nanoseconds). For surface field, = ALPHA.
FPAR (3)	For two-exponential field, = BETA = one of two decay constants (per second). For sine-function field, = ALPHA = $1.E9 / e\text{-folding time}$ (e-folding time in nanoseconds). For four-exponential field, = BETA = one of four decay constants. For surface field, = BETA.
FPAR (4)	For four-exponential and surface field, = GAMMA = one of four decay constants.
FPAR (5)	For four-exponential and surface field, = ETA = one of four decay constants.
FPAR (6)	For four exponential and surface field, = A1 = one of the three "weighting" constants.
FPAR (7)	For four-exponential and surface field, = A2 = one of three "weighting" constants.

<u>Parameter</u>	<u>Definition</u>						
FPAR (8)	For four-exponential and surface field, = A3 = one of three "weighting" constants.						
FPAR (9)	For simulator field, = R0 = radial distance from simulator (meters). For high altitude field, = THETA = angle of incident field with respect to ground (degrees).						
FPAR (10)	For simulator field, = R2 = height of simulator aboveground. For all other fields, = PHI = polarization angle of total E-field vector measured up from horizontal (degrees).						
FPAR (11)	For computing reflected component of high altitude incident field, = SIGMA = ground conductivity (default value = 0.01 mho).						
FPAR (12)	For computing reflected component of high altitude incident field, = EPSILON = ground dielectric constant (default value = 15).						
FPAR (13)	For following three cases (loop antennas only), FPAR (13 to 18) have following values: For loop horizontally oriented with THETA (angle of field with respect to ground) less than or equal to 45 deg (orientation of E-field's polarization is unimportant here). For loop vertically oriented with E-field vertically polarized parallel to plane of loop (THETA must be less than or equal to 45 deg). For loop vertically oriented with E-field horizontally polarized (no restrictions on field's orientation with respect to loop (THETA must be greater than 45 deg)).						
	<table border="0" style="margin-left: 40px;"> <tr> <td>FPAR (13) = EX = 0.</td> <td>FPAR (16) = L = -1.</td> </tr> <tr> <td>FPAR (14) = EY = 1.</td> <td>FPAR (17) = M = 0.</td> </tr> <tr> <td>FPAR (15) = EZ = 0.</td> <td>FPAR (18) = N = 0.</td> </tr> </table>	FPAR (13) = EX = 0.	FPAR (16) = L = -1.	FPAR (14) = EY = 1.	FPAR (17) = M = 0.	FPAR (15) = EZ = 0.	FPAR (18) = N = 0.
FPAR (13) = EX = 0.	FPAR (16) = L = -1.						
FPAR (14) = EY = 1.	FPAR (17) = M = 0.						
FPAR (15) = EZ = 0.	FPAR (18) = N = 0.						

For following three cases (for loop antennas only), FPAR (13 to 18) have following values:
For loop horizontally oriented with THETA greater than 45 deg (orientation of E-field's polarization is unimportant).
For loop vertically oriented with E-field vertically polarized perpendicular to plane of loop (THETA must be greater than 45 deg).
For loop vertically oriented with E-field horizontally polarized (no restrictions on field's orientation with respect to loop) (THETA must be less than or equal to 45 deg).

FPAR (13) = EX = 0.	FPAR (16) = L = 0.
FPAR (14) = EY = 1.	FPAR (17) = M = 0.
FPAR (15) = EZ = 0.	FPAR (18) = N = -1.

LITERATURE CITED

- (1) OS/VS2 TSO Command Language Reference, IBM Technical News Letter GC28-0646-3 (July 1976).
- (2) 6000 Series INTERCOM 3 Reference Manual, Control Data Corp. Publication 60252800, Rev. B (January 1972).
- (3) J. W. Cooley and J. W. Tukey, An Algorithm for the Machine Calculation of Complex Fourier Series, *Mathematics of Computation*, 19 (April 1965).
- (4) D. G. Dudley, *Numerical Inversion of the Fourier Transform, A Combination Trapezoidal and Filon Technique*, Lawrence Livermore Laboratories, Livermore, CA, UCRL-51878 (1975).
- (5) T. V. Noon, *Enhanced Plotting Software for Use with the Houston Instrument COMPLOT Plotter*, Harry Diamond Laboratories HDL-TM-75-32 (December 1975).
- (6) Egon Marx, *Printer Version of Plots Made by an Incremental Plotter*, Harry Diamond Laboratories HDL-TM-75-33 (December 1975).

APPENDIX A.—PROCEDURES FOR COMPUTER CODE TEMPO

APPENDIX A

CONTENTS

	<u>Page</u>
A-1 PROCEDURE TEMPO.....	25
A-2 PROCEDURE IO.....	26
A-3 PROCEDURE IO1.....	27
A-4 PROCEDURE IO2.....	27
A-5 PROCEDURE FRQ.....	28
A-6 PROCEDURE EFIELD.....	29
A-7 PROCEDURE INVERT.....	30
A-8 PROCEDURE CONVOL.....	31
A-9 PROCEDURE OUT.....	32

A-1. PROCEDURE TEMPO

Procedure TEMPO (listing A-1) can be used through the time sharing option (TSO) to execute interactive programs INPUT and DRIVE. After procedure TEMPO is completed, the new batch job can be submitted to the job stream by specifying a SUBMIT JOB command. The various data sets such as IO, CW, and JOB can be examined and altered by using the TSO EDIT command.

Listing A-1. Procedure TEMPO

```
00010 PROC 0
00020 CONTROL NOMSG
00030 FREE FILE(FT01F001,FT02F001,FT03F001,FT04F001,FT05F001,FT07F001)
00040 CONTROL MSG
00050 ALLOCATE DSNAME(*) FILE(FT01F001)
00060 ALLOCATE DSNAME(*) FILE(FT02F001)
00065 ALLOCATE DSNAME(IO) FILE(FT03F001)
00070 ALLOCATE DSNAME(JOB.CNTL) FILE(FT04F001)
00080 ALLOCATE DSNAME(CWDAT) FILE(FT05F001)
00090 ALLOCATE SYSOUT(B) FILE(FT07F001)
00100 FORTGO (INPT)
00110 FORTGO (DRIVE)
00120 CONTROL NOMSG
00130 FREE FILE(FT01F001,FT02F001,FT03F001,FT04F001,FT05F001,FT07F001)
00140 CONTROL MSG
END OF DATA
```

APPENDIX A

A-2. PROCEDURE IO

Procedure IO (listing A-2) is used the first time that the IO parameters are to be read from cards. At the same time, all temporary data sets to be used in a TEMPO batch job are defined.

Listing A-2 Procedure IO

```
//JOB      PROC
//* TOM HARRIS,303-599-1745, 1 JULY 1980    , INDEFINITE
//* INITIATES INPUT AND DATA FILES
//*
//*THIS PROCEDURE READS IN IO DATA CARDS USED TO DESCRIBE THE PROBLEM
//* TO BE EXECUTED BY TEMPO. THIS INCLUDES DT,IOFLAG(I), FLAG(I),
//*   PARAM(I), AND FPAR(I)
//*
//COPY EXEC PGM=IEFGENR
//SYSIN DD DUMMY
//SYSPRINT DD DUMMY
//SYSJ2 DD DSN=EEIO,DISP=(NEW,PASS),UNIT=SYSDA,
//      SPACE=(TRK,(1,1)),
//      DCB=(RECFM=FB,LRECL=80,BLKSIZE=800)
//FT03F001 DD DSN=EEFIMP,DISP=(NEW,PASS),
//      UNIT=VIO,SPACE=(TRK,(1,1)),
//      DCB=(RECFM=VS,BLKSIZE=4096)
//FT04F001 DD DSN=EEIMPLS,DISP=(NEW,PASS),
//      UNIT=VIO,SPACE=(TRK,(1,1)),
//      DCB=(RECFM=VS,BLKSIZE=4096)
//FT05F001 DD DSN=EEFIELD,DISP=(NEW,PASS),
//      UNIT=VIO,SPACE=(TRK,(1,1)),
//      DCB=(RECFM=VS,BLKSIZE=4096)
//FT06F001 DD DSN=EEPRINT,DISP=(NEW,PASS),
//      UNIT=VIO,SPACE=(TRK,(9,9)),
//      DCB=(RECFM=FA,LRECL=133,BLKSIZE=133)
//FT07F001 DD DSN=EEPUNDATA,DISP=(NEW,PASS),
//      UNIT=VIO,SPACE=(TRK,(1,1)),
//      DCB=(RECFM=FB,LRECL=80,BLKSIZE=800)
//FT08F001 DD DSN=EEFFIELD,DISP=(NEW,PASS),
//      UNIT=VIO,SPACE=(TRK,(1,1)),
//      DCB=(RECFM=VS,BLKSIZE=4096)
//FT09F001 DD DSN=EEFPROD,DISP=(NEW,PASS),
//      UNIT=VIO,SPACE=(TRK,(1,1)),
//      DCB=(RECFM=VS,BLKSIZE=4096)
//FT10F001 DD DSN=EERESP,DISP=(NEW,PASS),
//      UNIT=VIO,SPACE=(TRK,(1,1)),
//      DCB=(RECFM=VS,BLKSIZE=4096)
//FT11F001 DD DSN=EEZA,DISP=(NEW,PASS),
//      UNIT=VIO,SPACE=(TRK,(1,1)),
//      DCB=(RECFM=VS,BLKSIZE=4096)
//FT20F001 DD DSN=EENLIN,DISP=(NEW,PASS),
//      UNIT=VIO,SPACE=(TRK,(9,9)),
//      DCB=(RECFM=VS,BLKSIZE=4096)
```

A-3. PROCEDURE IO1

Procedure IO1 (listing A-3) reads cards into a specified temporary data set. The default value for the temporary data set is IO, since this procedure is normally used to read a new set of parameters into the temporary data set IO.

Listing A-3. Procedure IO1

```
//IO1  PROC FILE='&&IO',OUT=X
//*    W. J. STARK, 664-6234, 17 AUG 77, INDEFINITE
//* READS IO DATA
//IO1  EXEC  PGM=IEBGENER
//SYSIN DD DUMMY
//SYSPRINT DD DUMMY
//SYSJ2 DD DSN=EFILE,DISP=(OLD,PASS)
//COPY EXEC  PGM=IEBGENER,COND=EVEN
//SYSIN DD DUMMY
//SYSPRINT DD DUMMY
//SYSJ1 DD DSN=EFILE,DISP=(OLD,PASS)
//SYSJ2 DD SYSOUT=EQOUT
```

A-4. PROCEDURE IO2

Procedure IO2 (listing A-4) copies a short term or permanent data set into a specified temporary data set. The name of the input data set must be specified on the EXEC statement. The default value for the temporary data set is FIMP, since this procedure is normally used to copy continuous wave (cw) data into the temporary data set FIMP.

Listing A-4. Procedure IO2

```
//IO2  PROC IN=,OUT='&&FIMP'
//*    W. J. STARK, 664-6234, 21 APR 77, INDEFINITE
//* COPIES FILES
//COPY EXEC  PGM=IEBGENER
//SYSIN DD DUMMY
//SYSPRINT DD DUMMY
//SYSJ1 DD DSN=FIN,DISP=(OLD,KEEP)
//SYSJ2 DD DSN=EQOUT,DISP=(OLD,PASS)
//      EXEC  PGM=IEBGENER,COND=EVEN
//SYSIN DD DUMMY
//SYSPRINT DD DUMMY
//SYSJ1 DD DSN=EQOUT,DISP=(OLD,PASS)
//SYSJ2 DD SYSOUT=A
```

APPENDIX A

A-5. PROCEDURE FRQ

Procedure FRQ (listing A-5) loads and executes program FRQ with the appropriate subroutine. The appropriate FAMP subroutine must be specified on the EXEC statement. Otherwise, the default value of FAMP 1234 is used. If more than one frequency spectrum is to be computed, then FDISP = MOD must be specified on the EXEC statement.

Listing A-5 Procedure FRQ

```
//REQH PRIC FAMP=FAMP1234,FDISP=OLD,ZDISP=OLD
//* TOM HARRIS, 303-599-1745, 1 JULY 1980 , INDEFINITE
//* COMPUTES FAMP FILES
//LKED EXEC PGM=IEWL,REGION=250K,PARM='NO MAP,LIST,NOXREF,LET'
//*
//* THIS PROCEDURE EXECUTES THE FREQUENCY IMPULSE RESPONSE MAINLINE
//* PROGRAM. THE PROCEDURE CARD MUST HAVE FAMP=FAMP SUBROUTINE TO BE
//* EXECUTED.
//*
//SYSPRINT DC DUMMY
//SYSLIB DD DSN='HK3014.TEMPO4',DISP=SHR
// DD DSN=SYS1.FORTLIB,DISP=SHR
// DD DSN=SYS1.PAGLOAD,DISP=SHR
//SYSJTI DD UNIT=SYSDA,SPACE=(1024,(200,20))
//SYSLMOD DD DSN=ELGOSET(MAIN),UNIT=SYSDA,DISP=(,PASS),
// SPACE=(TRK,(10,10,2))
//SYSLIN DD DSN=HK3014.LKEDIN4(LEFAMP),DISP=SHR
//REQ EXEC PGM=*.LKED.SYSLMOD,COND=(8,LT,LKED)
//FT02F001 DD DSN=EEIIO,DISP=(OLD,PASS)
//FT03F001 DD DSN=EEFIMP,DISP=(OLD,PASS)
//FT06F001 DD DSN=EEPINT,DISP=(MOD,PASS)
//FT08F001 DD DSN=EEFFIELD,DISP=(OLD,PASS)
//FT09F001 DD DSN=EEFPROD,DISP=(OLD,PASS)
//FT11F001 DD DSN=EEZA,DISP=(OLD,PASS)
//FT20F001 DD DSN=EEENLIN,DISP=(OLD,PASS)
//DD1 DD DSN=ELGOSET,DISP=(OLD,DELETE)
```

A-6. PROCEDURE EFIELD

Procedure EFIELD (listing A-6) loads and executes programs EFIELD and EFIEL1. If more than one field is to be computed, FRQ = MOD or TIM = MOD must be specified on the EXEC statement, depending on whether the field computation is in the frequency domain or the time domain.

Listing A-6. Procedure EFIELD

```
//EFIELDH PROC FRQ=OLD,TIM=OLD
//* TOM HARRIS,303-599-1745, 1 JULY 1980 , INDEFINITE
//* COMPUTES EFIELD
//*
//* THIS PROCEDURE EXECUTES THE EFIELD MAINLINE PROGRAM.
//*
//LKED EXEC PGM=IEWL,REGION=250K,PARM=*NDMAP,LIST,NOXREF,LET*
//SYSPRINT DD DUMMY
//SYSLIB DD DSN=HK3014.TEMPO4*,DISP=SHR
// DD DSN=SYS1.FUJTLIB,DISP=SHR
// DD DSN=SYS1.PAGLUAD,DISP=SHR
//SYSJTI DD UNIT=SYSDA,SPACE=(1124,(210,20))
//SYSLMOD DD DSN=EGG0SET(MAIN),UNIT=SYSDA,DISP=(,PASS),
// SPACE=(TRK,(10,10,2))
//SYSLIN DD DSN=HK3014.LKEDIN4(EFIELD),DISP=SHR
//EFLD EXEC PGM=*.LKED.SYSLMOD,COND=(8,LT,LKED)
//FT02F001 DD DSN=EEID,DISP=(OLD,PASS)
//FT03F001 DD DSN=EEFIMP,DISP=(OLD,PASS)
//FT05F001 DD DSN=ELFIELD,DISP=(ETIM,PASS)
//FT06F001 DD DSN=ELPRINT,DISP=(MOD,PASS)
//FT08F001 DD DSN=EEFFIELD,DISP=(EFRQ,PASS)
//DD1 DD DSN=EGG0SET,DISP=(OLD,DELETE)
```

APPENDIX A

A-7. PROCEDURE INVERT

Procedure INVERT (listing A-7) loads and executes program INVERT and the appropriate subroutine. The default value for this subroutine is FFT1. Otherwise, FOURIER = LFILON must be specified on the EXEC statement. If the impulse response, the field, or the transient response is to be computed more than once, then IDISP, FDISP, or RDISP, respectively, must be set equal to MOD on the EXEC statement.

Listing A-7. Procedure INVERT

```
//INVERTH PROC IDISP=OLD,FDISP=OLD,RDISP=OLD,FOURIER=FFT1
//* TOM HARRIS,303-599-1745, 1 JULY 1980 , INDEFINITE
//* COMPUTES FFT
//*
//* THIS PROCEDURE EXECUTES THE FOURIER TRANSFORM MAINLINE PROGRAM.
//* AS OF 1 JULY,1980, THIS COMPUTES AN INVERSE FOURIER TRANSFORM,
//* FREQUENCY TO TIME DOMAIN, AND IT IS EXPECTED TO COMPUTE A FORWARD
//* FOURIER TRANSFORM TIME TO FREQUENCY DOMAIN, IN THE NEAR FUTURE.
//*
//LKED EXEC PGM=IEWL,REGION=250K,PARM='NOMAP,LIST,NOXREF,LET'
//SYSPRINT DD DUMMY
//SYSLIB DD DSN='HK3014.TEMP04',DISP=SHR
// DC DSN=SYS1.FORTLIB,DISP=SHR
//SYSUT1 DD UNIT=SYSDA,SPACE=(1,24,(2'0,2'0))
//SYSLMDD DD DSN=EGGOSET(MAIN),UNIT=SYSDA,DISP=(,PASS),
// SPACE=(TRK,(10,10,2))
//SYSLIN DD DSN=HK3014.LKEDIN4(FORIER),DISP=SHR
//FOUR EXEC PGM=*.LKED.SYSLMDD,COND=(8,LT,LKED)
//FT02F001 DD DSN=EE10,DISP=(OLD,PASS)
//FT03F001 DD DSN=EEFIMP,DISP=(OLD,PASS)
//FT04F001 DD DSN=EEIMPLS,DISP=(EIDISP,PASS)
//FT05F001 DD DSN=EEFIELD,DISP=(EFDISP,PASS)
//FT06F001 DD DSN=EEPRINT,DISP=(MOD,PASS)
//FT08F001 DD DSN=EEFFIELD,DISP=(OLD,PASS)
//FT09F001 DD DSN=EEFPRDD,DISP=(OLD,PASS)
//FT10F001 DD DSN=EERESP,DISP=(ERDISP,PASS)
//DD1 DD DSN=EGGOSET,DISP=(OLD,DELETE)
```

A-8. PROCEDURE CONVOL

Procedure CONVOL (listing A-8) loads and executes program CONVOL. If more than one convolution is to be performed, then FRQ = MOD or TIM = MOD must be specified on the EXEC statement, depending on whether the convolution is in the frequency domain or the time domain.

Listing A-8. Procedure CONVOL

```
//CONVOLH  PRJC  TIM=OLD,FRQ=OLD
//* TOM HARRIS,303-599-1745, 1 JULY 1980 , INDEFINITE
//* COMPUTES CONVOLUTION
//*
//* THIS PROCEDURE EXECUTES THE CONVOLUTION MAINLINE PROGRAM.
//* IT COMPUTES EITHER A TIME DOMAIN CONVOLUTION OF THE IMPULSE RESPONSE
//* AND EFIELD DRIVE, OR A FREQUENCY DOMAIN PRODUCT OF THE FREQUENCY
//* DOMAIN RESPONSE AND FREQUENCY DOMAIN EFIELD DRIVE.
//*
//LKED EXEC  PGM=IEWL,REGION=250K,PARM='NOMAP,LIST,NUXREF,LET'
//SYSPRINT DD DUMMY
//SYSLIB  DD DSN=HK3014.TEMPO4,DISP=SHR
//        DD DSN=SYS1.FORTLIB,DISP=SHR
//SYSJTI  DD UNIT=SYSDA,SPACE=(1124,(200,20))
//SYSLMOD DD DSN=EGG0SET(MAIN),UNIT=SYSDA,DISP=(,PASS),
//        SPACE=(TRK,(10,10,2))
//SYSLIN  DD DSN=HK3014.LKFDIN4(CONVOL),DISP=SHR
//CONV  EXEC PGM=*.LKED.SYSLMOD,COND=(8,LT,LKED)
//FT02F001 DD DSN=EEID,DISP=(OLD,PASS)
//FT03F001 DD DSN=EEFIMP,DISP=(OLD,PASS)
//FT04F001 DD DSN=EEIMPLS,DISP=(OLD,PASS)
//FT05F001 DD DSN=EEFIELD,DISP=(OLD,PASS)
//FT06F001 DD DSN=EEPRINT,DISP=(MOD,PASS)
//FT08F001 DD DSN=EEFFIELD,DISP=(OLD,PASS)
//FT09F001 DD DSN=EEFPROD,DISP=(EPRJ,PASS)
//FT10F001 DD DSN=EERESP,DISP=(LTIM,PASS)
//DD1  DD DSN=EGG0SET,DISP=(OLD,DELETE)
```


APPENDIX A

A-9. PROCEDURE OUT

Procedure OUT (listing A-9) loads and executes program OUT. The default value of OFFPLOT = 'HKZ001 OFFPLOT' allows the user to write output to the bed plotter on magnetic tape for subsequent off-line plotting. The substitutable parameter OFFPLOT must be set equal to SYS1 DUMMYLIB for on-line plotting. The default value of HLDPLT = YES allows the output to the plotter to be placed in hold so that the operator can mount a magnetic tape for the off-line plot option. Otherwise, the user must specify HLDPLT = NO on the EXEC statement. Substitutable parameters SYST and HLDPRT are used when a job is submitted through TSO and it is desired to recover the output at the TSO terminal such as a plot on the teletypewriter. In that case, the user must set SYST = Z and HLDPRT = YES. The output can then be recovered at the TSO terminal by issuing the OUTPUT (JOBID) command.

Listing A-9. Procedure OUT

```
//OUTH    PROC OFFPLOT='HK3014.OFFPLOT',SYST=A,HLDPLT=YES,HLDPRT=NO,
//          DIS=PASS,PUN=B
// * TOM HARRIS,303-599-1745, 1 JULY 1980 , INDEFINITE
// * OUTPUT ROUTINE
// *
// * THIS PROCEDURE PLOTS THE OUTPUT RESULTS FROM TEMPO AS CONTROLLED
// * BY THE IOFLAGS IN THE IO DATA DECK
// *
//LKED EXEC PGM=IEWL,REGION=250K,PARM='NOMAP,LIST,NOXREF,LET'
//SYSPRINT DD DUMMY
//SYSLIB  DD DSN=EOFFPLOT,DISP=SHR
//          DD DSN='HK3010.ANAPAC',DISP=SHR
//          DD DSN=SYS1.FURLIB,DISP=SHR
//          DD DSN=SYS1.PAGLOAD,DISP=SHR
//          DD DSN='HK3014.TEMPO4',DISP=SHR
//SYSJT1  DD UNIT=SYSDA,SPACE=(1024,(200,20))
//SYSLOAD DD DSN=ELGOSET(MAIN),UNIT=SYSDA,DISP=(,PASS),
//          SPACE=(TRK,(10,10,2))
//SYSLIN  DD DSN=HK3014.LKEDIN4(ULT),DISP=SHR
//OJT     EXEC PGM=*.LKED.SYSLOAD,COND=(8,LT,LKED)
//FT01F001 DD UNIT=VIO,DISP=(,PASS),SPACE=(CYL,(1,1))
//FT02F001 DD DSN=ELIU,DISP=(OLD,DELETE)
//FT03F001 DD DSN=EEFIMP,DISP=(OLD,DELETE)
//FT04F001 DD DSN=EEIMPLS,DISP=(OLD,DELETE)
//FT05F001 DD DSN=EEFIELD,DISP=(OLD,DELETE)
//FT06F001 DD DSN=EEPRINT,DISP=(OLD,PASS)
//FT08F001 DD DSN=EEFFIELD,DISP=(OLD,DELETE)
//FT09F001 DD DSN=EEFPROD,DISP=(OLD,DIS)
//FT10F001 DD DSN=EERESP,DISP=(OLD,DIS)
//FT11F001 DD DSN=ELZA,DISP=(OLD,DIS)
//FT12F001 DD UNIT=VIO,DISP=(,PASS),SPACE=(CYL,(1,1))
//FT20F001 DD DSN=ELNLIN,DISP=(OLD,DELETE)
//          EXEC PGM=IEBGENER,COND=EVEN
//SYSIN DD DUMMY
//SYSPRINT DD DUMMY
//SYSJT1 DD DSN=EEPRINT,DISP=(OLD,DELETE)
//SYSUT2 DD SYSOUT=ESYST,HOLD=EHLDPRT
//DD1 DD DSN=ELGOSET,DISP=(OLD,DELETE)
//          EXEC PGM=IEBGENER,COND=EVEN
//SYSIN DD DUMMY
//SYSPRINT DD DUMMY
//SYSJT1 DD DSN=ELPUNDATA,DISP=(OLD,DELETE)
//SYSUT2 DD SYSOUT=EPUN,HOLD=EHLDPLT
```

DISTRIBUTION

ADMINISTRATOR
DEFENSE TECHNICAL INFORMATION CENTER
ATTN DTIC-DDA (12 COPIES)
CAMERON STATION, BUILDING 5
ALEXANDRIA, VA 22314

COMMANDER
US ARMY RSCH & STD GP (EUR)
ATTN CHIEF, PHYSICS & MATH BRANCH
FPO NEW YORK 09510

COMMANDER
US ARMY MISSILE & MUNITIONS
CENTER & SCHOOL
ATTN ATSK-CTD-F
REDSTONE ARSENAL, AL 35809

DIRECTOR
US ARMY MATERIEL SYSTEMS ANALYSIS
ACTIVITY
ATTN DRXSY-MP
ATTN DRXSY-PO
ABERDEEN PROVING GR ND, MD 21005

DIRECTOR
US ARMY BALLISTIC RESEARCH LABORATORY
ATTN DRDAR-TSB-S (STINFO)
ATTN DRXBR-AM, W. VANANTWERP
ATTN DRSTE-EL
ATTN DRDAR-BLE
ABERDEEN PROVING GROUND, MD 21005

US ARMY ELECTRONICS TECHNOLOGY
AND DEVICES LABORATORY
ATTN DELET-DD
FORT MONMOUTH, NJ 07703

HQ, USAF/SAMI
WASHINGTON, DC 20330

TELEDYNE BROWN ENGINEERING
CUMMINGS RESEARCH PARK
ATTN DR. MELVIN L. PRICE, MS-44
HUNTSVILLE, AL 35807

DIRECTOR
ARMED PROCES RADIOBIOLOGY
RESEARCH INSTITUTE
DEFENSE NUCLEAR AGENCY
NATIONAL NAVAL MEDICAL CENTER
ATTN RESEARCH PROGRAM
COORDINATING OFFICER
BETHESDA, MD 20014

ASSISTANT TO THE SECRETARY OF DEFENSE
ATOMIC ENERGY
ATTN EXECUTIVE ASSISTANT
WASHINGTON, DC 20301

DIRECTOR
DEFENSE ADVANCED RSCH PROJ AGENCY
ARCHITECT BUILDING
1400 WILSON BLVD
ATTN TIO
ARLINGTON, VA 22209

FEDERAL EMERGENCY MANAGEMENT AGENCY
ATTN JAMES W. KERR
MITIGATION & RESEARCH
WASHINGTON, DC 20472

DIRECTOR
DEFENSE COMMUNICATIONS AGENCY
ATTN CODE C312
ATTN CODE C311
WASHINGTON, DC 20305

DEFENSE COMMUNICATIONS ENGINEERING
CENTER
1860 WIEHLE AVENUE
ATTN CODE R720, C. STANSBERRY
ATTN CODE R123, RECH LIB
ATTN CODE R400
RESTON, VA 22090

DIRECTOR
DEFENSE INTELLIGENCE AGENCY
ATTN RDS-3A
ATTN RDS-3A4, POMPONIO PLAZA
WASHINGTON, DC 20301

DIRECTOR
DEFENSE NUCLEAR AGENCY
ATTN DDST, E. E. CONRAD, DEP DIR
SCI & TECH
ATTN RAEV, ELECTRONICS VULNERABILITY
DIV
ATTN TITL, TECHNICAL LIBRARY DIV
ATTN RAEF, EMP EFFECTS DIV
WASHINGTON, DC 20305

COMMANDER
FIELD COMMAND
DEFENSE NUCLEAR AGENCY
ATTN FCPR
ATTN FCSPM, J. SMITH
ATTN FCLMC
KIRTLAND AFB, NM 87115

DIRECTOR
INTERSERVICE NUCLEAR WEAPONS SCHOOL
ATTN TTV
KIRTLAND AFB, NM 87115

JOINT CHIEFS OF STAFF
ATTN J-3
WASHINGTON, DC 20301

DIRECTOR
JOINT STRATEGIC TARGET PLANNING
STAFF, JCS
ATTN JSAS
ATTN JPST
ATTN NRI-STINFO LIBRARY
OFFUTT AFB
OMAHA, NM 68113

CHIEF
LIVERMORE DIVISION, FIELD COMMAND DNA
LAWRENCE LIVERMORE LABORATORY
P.O. BOX 808
ATTN FCPRL
LIVERMORE, CA 94550

NATIONAL COMMUNICATIONS SYSTEM
OFFICE OF THE MANAGER
DEPARTMENT OF DEFENSE
ATTN NCS-TS, CHARLES D. BODSON
WASHINGTON, DC 20305

DIRECTOR
NATIONAL SECURITY AGENCY
DEPARTMENT OF DEFENSE
ATTN R-52, O. VAN HUNTEN
ATTN S232, D. VINCENT
FT GEORGE G. MEADE, MD 20755

UNDER SECRETARY OF DEF FOR RSCH &
ENGRG
DEPARTMENT OF DEFENSE
ATTN G. BARSE
ATTN S&SS (OS)
WASHINGTON, DC 20301

COMMANDER
BMD SYSTEM COMMAND
DEPARTMENT OF THE ARMY
P.O. BOX 1500
ATTN BMDSC-AOLIB
HUNTSVILLE, AL 35807

COMMANDER
ERADCOM TECHNICAL SUPPORT ACTIVITY
DEPARTMENT OF THE ARMY
ATTN DRDCO-COM-ME, G. GAULE
ATTN DELSD-L, TECHNICAL LIBRARY DIV
ATTN DELCS-K, A. COHEN
ATTN DELET-IR, E. HUNTER
FT MONMOUTH, NJ 07703

COMMANDER
US ARMY ARMORE CENTER
ATTN TECHNICAL LIBRARY
FORT KNOX, KY 40121

COMMANDER
US ARMY COMM-ELEC ENGRG INSTAL AGENCY
ATTN CCC-PRSO-S
ATTN CCC-CEI-SES
FT HUACHUCA, AZ 85613

COMMANDER
US ARMY COMMUNICATIONS COMMAND
ATTN CC-OPS-PD
ATTN CC-OPS, OS
FT HUACHUCA, AZ 85613

COMMANDER
US ARMY COMMUNICATIONS COMMAND
COMBAT DEVELOPMENT DIVISION
ATTN ATSI-CD-MD
FT HUACHUCA, AZ 85613

CHIEF
US ARMY COMMUNICATIONS SYS AGENCY
ATTN CCM-RD-T, CCM-AD-SV
FT MONMOUTH, NJ 07703

PROJECT OFFICER
US ARMY COMMUNICATIONS RES
& DEV COMMAND
ATTN DRCPM-ATC
ATTN DRCPM-TDS-BSI
FT MONMOUTH, NJ 07703

DIVISION ENGINEER
US ARMY ENGINEER DIV, HUNTSVILLE
P.O. BOX 1600, WEST STATION
ATTN HNDED-SR
ATTN A. T. BOLT
HUNTSVILLE, AL 35807

US ARMY INTEL THREAT
ANALYSIS DETACHMENT
ROOM 2201, BLDG A
ARLINGTON HALL STATION
ATTN RM 2200, BLDG A
ARLINGTON, VA 22212

COMMANDER
US ARMY INTELLIGENCE & SEC CMD
ARLINGTON HALL STATION
4000 ARLINGTON BLVD
ATTN TECHNICAL LIBRARY
ATTN TECH INFO FAC
ARLINGTON, VA 22212

DISTRIBUTION (Cont'd)

COMMANDER
US ARMY MISSILE COMMAND
ATTN DRCPM-PE-EA, WALLACE O. WAGNER
ATTN DRCPM-PE-EG, WILLIAM B. JOHNSON
ATTN DRDML-TRD
ATTN DRDMI-EAA
REDSTONE ARSENAL, AL 35899

COMMANDER
US ARMY TEST AND EVALUATION COMMAND
ATTN DRSTE-FA
ABERDEEN PROVING GROUND, MD 21005

COMMANDER
US ARMY TRAINING AND DOCTRINE COMMAND
ATTN ATORT-AP-SW
FT MONROE, VA 23651

COMMANDER
WHITE SANDS MISSILE RANGE
DEPARTMENT OF THE ARMY
ATTN STWS-PE-AN, J. OKUMA
WHITE SANDS MISSILE RANGE, NM 89002

OFFICER-IN-CHARGE
CIVIL ENGINEERING LABORATORY
NAVAL CONSTRUCTION BATTALION CENTER
ATTN CODE LDRA (LIBRARY)
ATTN CODE LDRA
PORT HUENEME, CA 93041

COMMANDER, NAVAL AIR SYSTEMS COMMAND
ATTN AIR-150R
WASHINGTON, DC 20360

COMMANDER
NAVAL ELECTRONIC SYSTEMS COMMAND
ATTN PME 117-215
WASHINGTON, DC 20360

COMMANDER
NAVAL OCEAN SYSTEMS CENTER
ATTN CODE 015, C. FLETCHER
ATTN RESEARCH LIBRARY
ATTN CODE 7240, S. W. LIGHTMAN
SAN DIEGO, CA 92152

COMMANDING OFFICER
NAVAL ORDNANCE STATION
ATTN STANDARDIZATION DIV
INDIAN HEAD, MD 20640

SUPERINTENDENT (CODE 1424)
NAVAL POSTGRADUATE SCHOOL
ATTN CODE 1424
MONTEREY, CA 91940

DIRECTOR
NAVAL RESEARCH LABORATORY
ATTN CODE 4104, EMANUEL L. BRANCATO
ATTN CODE 2627, DORIS P. POLEN
ATTN CODE 6623, RICHARD L. STATLER
ATTN CODE 6624
WASHINGTON, DC 20375

COMMANDER
NAVAL SHIP ENGINEERING CENTER
DEPARTMENT OF THE NAVY
ATTN CODE 617402, EDWARD F. DUFFY
WASHINGTON, DC 20362

COMMANDER
NAVAL SURFACE WEAPONS CENTER
ATTN CODE W51RH, RM 110-10R
ATTN CODE F12, EDWIN R. BATHURNE
WHITE OAK, SILVER SPRING, MD 20910

COMMANDER
NAVAL SURFACE WEAPONS CENTER
DAHLGREN LABORATORY
ATTN CODE DF-56
DAHLGREN, VA 22448

COMMANDER
NAVAL WEAPONS CENTER
ATTN CODE 513, TECH LIB
CHINA LAKE, CA 93555

COMMANDING OFFICER
NAVAL WEAPONS EVALUATION FACILITY
KIRTLAND AIR FORCE BASE
ATTN CODE AT-6
ALBUQUERQUE, NM 87117

OFFICE OF NAVAL RESEARCH
ATTN CODE 427
ARLINGTON, VA 22217

DIRECTOR
STRATEGIC SYSTEMS PROJECT OFFICE
NAVY DEPARTMENT
ATTN NSP-2701, JOHN W. PILSENBERGER
ATTN NSP-2142, RICHARD L. COLEMAN
ATTN NSP-41, TECH LIB
ATTN NSP-27334
ATTN NSP-230, D. GOLD
WASHINGTON, DC 20376

COMMANDER
AERONAUTICAL SYSTEMS DIVISION, AFSC
ATTN ASD-YH-EX
ATTN ENPTV
WRIGHT-PATTERSON AFB, OH 45333

AIR FORCE TECHNICAL APPLICATIONS
CENTER
ATTN DES, M. SCHNEIDER
PATRICK AFB, FL 32925

AF WEAPONS LABORATORY, AFSC
ATTN WPN
ATTN WT
ATTN EL, CARL E. BAUM
ATTN ELXT
ATTN SUL
ATTN CA
ATTN ELA, J. P. CASTILLO
ATTN ELP
ATTN ELT, W. PAGE
ATTN NXS
KIRTLAND AFB, NM 87117

DIRECTOR
AIR UNIVERSITY LIBRARY
DEPARTMENT OF THE AIR FORCE
ATTN AUL-LSE-70-250
MAXWELL AFB, AL 36112

HEADQUARTERS
ELECTRONIC SYSTEMS DIVISION YSEA
DEPARTMENT OF THE AIR FORCE
ATTN YSEA
HANSCOM, AFB MA 01731

COMMANDER
FOREIGN TECHNOLOGY DIVISION, AFSC
ATTN NICO LIBRARY
ATTN FTDP, B. L. BALLARD
WRIGHT-PATTERSON AFB, OH 45333

COMMANDER
OGDEN ALC/MMEDE
DEPARTMENT OF THE AIR FORCE
ATTN OO-ALC/MMETH, P. W. BERTHEL
ATTN MMEDE, LEO KLIMAN
ATTN MAJ R. BLACKBURN
HILL AFB, UT 84406

COMMANDER
ROME AIR DEVELOPMENT CENTER, AFSC
ATTN RSLD
GRIFFISS AFB, NY 13441

COMMANDER
SACRAMENTO AIR LOGISTICS CENTER
DEPARTMENT OF THE AIR FORCE
ATTN MMRS, H. A. DELMATER
ATTN MMRA, J. W. DEMER
ATTN MMSRM, P. R. SPAR
MCLELLAN AFB, CA 95055

SAMC-1N
AIR FORCE SYSTEMS COMMAND
POST OFFICE BOX 12000
WORLDWAY POSTAL CENTER
(INTELLIGENCE)
ATTN INI
LOS ANGELES, CA 90009

SAMC-MN
AIR FORCE SYSTEMS COMMAND
MINNEAPOLIS
ATTN MNH, MAJ M. HAHAN
ATTN MNH, CAPT R. L. LAWRENCE
NEARBY AFB, CA 94543

SAMC-YA
AIR FORCE SYSTEMS COMMAND
POST OFFICE BOX 12000
WORLDWAY POSTAL CENTER
ATTN YAI
LOS ANGELES, CA 90009

STRATEGIC AIR COMMAND CENTER
ATTN STR-ENGINE LIBRARY
ATTN STR
ATTN GARNET E. MATOKE
ATTN XPN, MAJ BRIAN G. STEPHAN
OFFICE AFB, NH 03111

DEPARTMENT OF ENERGY
ALBUQUERQUE OPERATIONS OFFICE
P.O. BOX 5400
ATTN TECH LIBRARY
ATTN OPERATIONAL SAFETY DIV
ALBUQUERQUE, NM 87115

UNIVERSITY OF CALIFORNIA
LAWRENCE LIVERMORE LABORATORY
P.O. BOX 808
ATTN TECH INFO DEPT
ATTN L-06, E. DAVICH
ATTN L-545, D. MEYER
ATTN L-166, F. MILLER
ATTN L-10, H. KRIBER
ATTN H. S. SARAYAN
LIVERMORE, CA 94550

LOS ALAMOS SCIENTIFIC LABORATORY
P.O. BOX 1663
ATTN BRUCE W. NEWI
ATTN CLARENCE BENTON
LOS ALAMOS, NM 87545

DISTRIBUTION (Cont'd)

SANDIA LABORATORIES
P.O. BOX 5800
ATTN: C. N. VITTORIO
ATTN: R. L. PARKER
ATTN: ELMER F. HARTMAN
ALBUQUERQUE, NM 87115

CENTRAL INTELLIGENCE AGENCY
ATTN: ROSE, RM 5649, HQ, BLDG
FOUR (OSI NEI NWB)
WASHINGTON, DC 20505

ADMINISTRATOR
DEFENSE ELECTRIC POWER ADMIN
DEPARTMENT OF THE INTERIOR
INTERIOR SOUTH BLDG, 112
ATTN: L. STINEILL
WASHINGTON, DC 20240

DEPARTMENT OF TRANSPORTATION
FEDERAL AVIATION ADMINISTRATION
HEADQUARTERS BLDG 111, APT-1
400 INDEPENDENCE AVENUE, SW
ATTN: RETIRED ASS-111
WASHINGTON, DC 20515

AEROSPACE CORPORATION
P.O. BOX 1247
ATTN: G. H. PEARLTON
ATTN: EDWIN M. GARDINER
ATTN: MILDAN REINHOLMER
ATTN: LIBRARY
ATTN: CHARLES GREENBERG
LOS ANGELES, CA 90004

ALABAMA ASSOCIATES
250 NORTH NASH STREET
ATTN: LIBRARY
FLORENCE, AL 36604

AVI RESEARCH & SYSTEMS GROUP
211 LOWELL STREET
ATTN: W. LAURENCE
WILMINGTON, MA 01897

BATTLE MEMORIAL INSTITUTE
500 KENNES AVENUE
ATTN: RICHARD H. BLAYNE
ATTN: EUGENE H. LEACH
COLUMBUS, OH 43201

BOM CORPORATION
715 DUNN BRANCH DRIVE
ATTN: CORPORATE LIBRARY
MILFORD, VA 22460

BOM CORPORATION
P.O. BOX 1274
ALBUQUERQUE INTERNATIONAL
ATTN: LIB
ALBUQUERQUE, NM 87114

BENDIX CORPORATION
RESEARCH LABORATORIES DIVISION
BENDIX CENTER
ATTN: MAX FRANK
SOUTHFIELD, MI 48035

BENDIX CORPORATION
NAVIGATION AND CONTROL GROUP
ATTN: DEPT 6401
TROY, OH 45375

BOWEN COMPANY
P.O. BOX 1797
ATTN: HOWARD W. WICKLIFF
ATTN: D. E. ISBELL
ATTN: DAVID KEMLE
ATTN: B. C. HANRAHAN
ATTN: KENT THOMAS
SEATTLE, WA 98104

BOW-ALLEN AND HAMILTON, INC.
106 APPLE STREET
ATTN: R. L. CHRISTNER
ATTN: TECH LIB
DUNTON FALLS, NE 68724

BROWN ENGINEERING COMPANY, INC.
TUMMINS RESEARCH PARK
ATTN: FRED LEONARD
HUNTSVILLE, AL 35897

BURROUGHS CORPORATION
RESEARCH AND DEVELOPMENT CENTER
CENTRAL AVENUE AND BOSTON ST
P.O. BOX 1017
ATTN: ANNE D. M. MARSHALL
LAUREL, PA 15044

ITALIAN CORPORATION
P.O. BOX 47
ATTN: JOHN LIBRARY
ROCHESTER, NY 14617

CHARLES STARK DRAPER LABORATORY, INC.
550 TECHNOLOGY SQUARE
ATTN: KENNETH PERCI
ATTN: DEPT 14
CAMBRIDGE, MA 02139

MINNAPAC ELECTRONICS CORPORATION
2400 BLENWADE - MILLER ROAD
ATTN: DAVID HAMMOND
MINNAPAC, OH 44024

COMPTEL SYSTEMS CORPORATION
1000 AMERICAN BLDG
ATTN: RAMONA GELLES
FAIRFAX STATION, VA 22030

COMPTEL SYSTEMS CORPORATION
1415 JAY MATH BLDG, 20
ATTN: RICHARD H. WILKINSON
ATTN: ALVIN BIRDE
ALBUQUERQUE, NM 87104

COMPTEL DATA CORPORATION
P.O. BOX 1
ATTN: JACK MEEHAN
MINNEAPOLIS, MN 55411

COOPER-HAMMER, INC.
ALL DIVISION
7 MA 100A
ATTN: EDWARD WARDEN
NEW YORK, NY 11104

CREW CORPORATION
1011 BENTLEY CITY CENTER, NP
ATTN: DEPT 110
ATTN: D. WYNN WOOD
ALBUQUERQUE, NM 87105

CYBERNET CORPORATION
1715 ATMAN PARK DRIVE, 10TH FL
ATTN: K. SPA
SAN MARINO, CA 91104

E-SYSTEMS, INC.
GREENVILLE DIVISION
P.O. BOX 1290
ATTN: LETA MOORE
GREENVILLE, TX 76431

FERRIS TECHNOLOGY, INC.
500 HENDERSON AVENUE
ATTN: G. DEW
DANTA BARBARA, CA 93111

FISHER WASHINGTON ANALYTICAL SERVICES
CORPORATION, INC.
P.O. BOX 1010
ATTN: G. GILES
ALBUQUERQUE, NM 87114

FOX AND DEAR COMPANY, INC.
RESEARCH AND DEVELOPMENT CENTER
1001 DEBBE WASHINGTON WAY
ATTN: R. A. W. SCHWELER
ALBANY, WA 99001

GENERAL CAMERA AND INSTRUMENT
CORPORATION
ATTN: AUSTIN WOOD
MONTREAL, PQ, CA 12001

GENERAL ELECTRIC COMMUNICATIONS
CORPORATION
ATTN: TECHNICAL LIBRARY
FAY ATEN, MA 01460

GENERAL ELECTRIC COMMUNICATIONS
CORPORATION
ATTN: JOHN W. WOOD
ATTN: JOHN W. WOOD
ATTN: JOHN W. WOOD
NEW YORK, NY 10014

FRANKLIN ELECTRONIC
1000 GREENWOOD PARKWAY
ATTN: GARY H. WOOD
DANTA BARBARA, CA 93101

GENERAL ELECTRIC COMMUNICATIONS
CORPORATION
ATTN: JOHN W. WOOD
ATTN: JOHN W. WOOD
NEW YORK, NY 10014

GENERAL ELECTRIC COMMUNICATIONS
CORPORATION
ATTN: JOHN W. WOOD
ATTN: JOHN W. WOOD
NEW YORK, NY 10014

GENERAL ELECTRIC COMMUNICATIONS
CORPORATION
ATTN: JOHN W. WOOD
ATTN: JOHN W. WOOD
NEW YORK, NY 10014

GENERAL ELECTRIC COMMUNICATIONS
CORPORATION
ATTN: JOHN W. WOOD
ATTN: JOHN W. WOOD
NEW YORK, NY 10014

GENERAL ELECTRIC COMMUNICATIONS
CORPORATION
ATTN: JOHN W. WOOD
ATTN: JOHN W. WOOD
NEW YORK, NY 10014

DISTRIBUTION (Cont'd)

GENERAL ELECTRIC CO.-TEMPO
ALEXANDRIA OFFICE
HUNTINGTON BUILDING, SUITE 300
2560 HUNTINGTON AVENUE
ATTN DASIAC
ALEXANDRIA, VA 22303

GENERAL RESEARCH CORPORATION
SANTA BARBARA DIVISION
P.O. BOX 6770
ATTN TECH INFO OFFICE
SANTA BARBARA, CA 93111

GEORGIA INSTITUTE OF TECHNOLOGY
GEORGIA TECH RESEARCH INSTITUTE
ATTN R. CURRY
ATLANTA, GA 30332

GEORGIA INSTITUTE OF TECHNOLOGY
OFFICE OF CONTRACT ADMINISTRATION
ATTN RSCH SECURITY COORDINATOR
FOR HUGH DENNY
ATLANTA, GA 30332

GRUMMAN AEROSPACE CORPORATION
SOUTH OYSTER BAY ROAD
ATTN D-01 35
BETHPAGE, NY 11714

ITE SYLVANIA, INC
ELECTRONIC SYSTEMS GRP-EASTERN DIV
77 A STREET
ATTN CHARLES A. THORNHILL, LIBRARIAN
ATTN LEONARD L. BLAISDELL
NEENHAM, MA 02134

ITE SYLVANIA, INC
103 B. STREET
ATTN CHARLES H. RAMSDEN
ATTN DAVID H. ELAND
ATTN EMIL P. WITTHOK
ATTN H. V. GROUP, MARIE A. NUREKRA
ATTN T. VALERIN
NEENHAM BEACH, MA 02134

HARRIS CORPORATION
HARRIS SEMI-CONDUCTOR DIVISION
P.O. BOX 400
ATTN V. DRES & MGR PROMS DIV
MIDDLETOWN, CT 06457

HATELINE CORPORATION
PULASKI ROAD
ATTN JOHN H. W. M. WALTER
GREENLAWN, NY 11340

HENRYWELL INCORPORATED
AVIATION DIVISION
200 WIDEWAY PARKWAY
ATTN W. L. LID
ATTN RONALD E. THINSON
MINNEAPOLIS, MN 55411

HENRYWELL INCORPORATED
AVIATION DIVISION
100 W. WIDEWAY PARKWAY, 12 NORTH
ATTN M. L. LID, STACY H. DRAFT
ATTN W. L. LID
200 WIDEWAY PARKWAY, MN 55411

HUGHES AIRCRAFT COMPANY
KENTFIELD AN OFFICE
ATTN JOHN H. LIBRARY
ATTN J. L. LID

HUGHES AIRCRAFT COMPANY (Cont'd)
ATTN KENNETH R. WALKER
CULVER CITY, CA 90230

IIT RESEARCH INSTITUTE
ELECTROMAG COMPATABILITY ANAL CTR
NORTH SEVERN
ATTN ACOAT
ANNAPOLIS, MD 21402

IIT RESEARCH INSTITUTE
10 WEST 35TH STREET
ATTN IRVING N. MINDEL
ATTN JACK E. BRIDGES
CHICAGO, IL 60616

INSTITUTE FOR DEFENSE ANALYSES
400 ARMY-NAVY DRIVE
ATTN TECH INFO SERVICES
ARLINGTON, VA 22202

INTL TEL & TELEGRAPH CORPORATION
500 WASHINGTON AVENUE
ATTN TECHNICAL LIBRARY
ATTN ALEXANDER T. RICHARDSON
NUTLEY, NJ 07110

IRT CORPORATION
P.O. BOX 81087
ATTN C. B. WILLIAMS
ATTN DENNIS SWIFT
SAN DIEGO, CA 92138

JAYCOR
SANTA BARBARA FACILITY
P.O. BOX 2008
ATTN W. A. RADASKY
SANTA BARBARA, CA 93120

JAYCOR
1401 CAMINO DEL MAR
ATTN ERIC P. WENNAAS
ATTN RALPH H. STAHL
DEL MAR, CA 92014

JAYCOR
200 N. WHITTING STREET, SUITE 500
ATTN LIB
ALEXANDRIA, VA 22304

KAMAN SCIENCES CORPORATION
1530 GARDEN OF THE GODS ROAD
ATTN ALBERT P. BRIDGES
ATTN W. FOSDER RICH
ATTN WALTER E. WARE
ATTN FRANK H. SHIELDIN
ATTN JERRY L. LURELL
ATTN BILL CRAY
COLORADO SPRINGS, CO 80901

LITTON SYSTEMS, INC
DATA SYSTEMS DIVISION
8000 WOODLEY AVENUE
ATTN EMC 10
ATTN M48-01
VAN NUYS, CA 91411

LITTON SYSTEMS, INC
AMERICAN DIVISION
5115 PALMER ROAD
ATTN J. SKARDE
DOLLE PARK, MD 20744

LOCKHEED MISSILES AND SPACE CO., INC
P.O. BOX 504
ATTN J. ROSE

LOCKHEED MISSILES & SPACE CO., INC
(Cont'd)
ATTN SAMUEL I. TAIMUTY
ATTN H. E. THAYN
ATTN GEORGE F. HEATH
ATTN BENJAMIN T. KIMURA
SUNNYVALE, CA 94086

LOCKHEED MISSILE AND SPACE COMPANY,
INC
3251 HANOVER STREET
ATTN TECH INFO CTR D/COLL
PALO ALTO, CA 94304

M.I.T. LINCOLN LABORATORY
P.O. BOX 73
ATTN LEONA LOUGHLIN
LEXINGTON, MA 02173

MARTIN MARIETTA CORPORATION
ORLANDO DIVISION
P.O. BOX 5837
ATTN MONA C. GRIFFITH
ORLANDO, FL 32805

MCDONNELL DOUGLAS CORPORATION
P.O. BOX 516
ATTN TOM ENDER
ST. LOUIS, MO 63166

MCDONNELL DOUGLAS CORPORATION
5301 BOLSA AVENUE
ATTN STANLEY SCHNEIDER
ATTN TECH LIBRARY SERVICES
HUNTINGTON BEACH, CA 92647

MISSION RESEARCH CORPORATION
P.O. DRAWER 713
ATTN EMP GROUP
ATTN WILLIAM G. HART
ATTN G. LON MIRE
SANTA BARBARA, CA 93101

MISSION RESEARCH CORPORATION
P.O. BOX 9410
ATTN WENNER STARK
ATTN BOY STRAYER, JR
COLORADO SPRINGS, CO 80901

MISSION RESEARCH CORPORATION
FM SYSTEM APPLICATIONS DIVISION
1400 SAN MATEO BLVD, SE, SUITE A
ATTN DAVID E. MEREWETHER
ALBUQUERQUE, NM 87110

MISSION RESEARCH CORPORATION
AVIATION DIV
P.O. BOX 1000
ATTN V. A. J. VAN LINT
LA JOLLA, CA 92037

MIRO CORPORATION
P.O. BOX 100
ATTN M. L. MITCHELL
MEDFORD, MA 01850

NORLEN SYSTEMS, INC
ROSEN GROUP
ATTN TECHNICAL LIBRARY
NORWALK, CT 06854

NORTHROP CORPORATION
ONE BEACON PARK
ATTN LIBRARY
FALLEN LEAF, PENN. 15111

DISTRIBUTION (Cont'd)

NORTHROP CORPORATION
ELECTRONIC DIVISION
2301 WEST 120TH STREET
ATTN LEW SMITH
ATTN RAD EFFECTS GRP
HAWTHORNE, CA 90250

PHYSICS INTERNATIONAL COMPANY
2700 MERCED STREET
ATTN DC CON
SAN LEANDRO, CA 94577

R&D ASSOCIATES
P.O. BOX 9695
ATTN S. CLAY ROGERS
ATTN CHARLES MO
ATTN RICHARD R. SCHAEFER
ATTN DC CON
ATTN M. GROVER
ATTN C. MACDONALD
ATTN J. BOMBARDT
MARINA DEL REY, CA 90291

R&D ASSOCIATES
1401 WILSON BLVD
SUITE 500
ATTN J. BOMBARDT
ARLINGTON, VA 22209

RAND CORPORATION
1700 MAIN STREET
ATTN LIB-D
ATTN J. SOLLERREY
SANTA MONICA, CA 90406

RAYTHEON COMPANY
HARTWELL ROAD
ATTN GAJANAN H. JOSHI
BEDFORD, MA 01730

RAYTHEON COMPANY
528 BOSTON POST ROAD
ATTN HAROLD L. FLESCHER
SUDBURY, MA 01776

RCA CORPORATION
GOVERNMENT SYSTEMS DIVISION
ASTRO ELECTRONICS
P.O. BOX 800, LACUSTE CORNER
EAST WINDSOR DOWNSHIP
ATTN ROGER L. BRUNKER
PRINCETON, NJ 08540

RCA CORPORATION
DAVID SARNOFF RESEARCH CENTER
P.O. BOX 442
ATTN SECURITY DEPT., L. MINICH
PRINCETON, NJ 08540

RCA CORPORATION
CAMDEN COMPLEX
FRONT & 50TH STREETS
ATTN BLIVE WHITEHEAD
ATTN R. W. ROSTRUM
CAMDEN, NJ 08010

ROCKWELL INTERNATIONAL CORP
P.O. BOX 3117
ATTN N. L. WHITE
ATTN L. L. MANKOFF
ATTN V. L. MIMBLE
ATTN D. J. SHERMAN, 311-3413
ANAHEIM, CA 92813

ROCKWELL INTERNATIONAL CORP
SPACE DIVISION
12214 SOUTH LAKEWOOD BOULEVARD
ATTN B. E. WHITE
DOWNEY, CA 90241

ROCKWELL INTERNATIONAL CORPORATION
815 LAPHAM STREET
ATTN B-1, DIV TIC (BAOB)
EL SEGUNDO, CA 90245

ROCKWELL INTERNATIONAL CORPORATION
P.O. BOX 369
ATTN F. A. SHAW
CLEARFIELD, UT 84015

SANDERS ASSOCIATES, INC
95 CANAL STREET
ATTN 1-6270, R. G. DESPATHY, SR P E
NASHUA, NH 03060

SCIENCE APPLICATIONS, INC
P.O. BOX 277
ATTN FREDERICK M. TESCHE
BERKELEY, CA 94701

SCIENCE APPLICATIONS, INC
P.O. BOX 2351
ATTN R. PARKINSON
LA JOLLA, CA 92039

SCIENCE APPLICATIONS, INC
HUNTSVILLE DIVISION
2103 W. CLINTON AVENUE
SUITE 200
ATTN NOEL R. BYRN
HUNTSVILLE, AL 35895

SCIENCE APPLICATIONS, INC
8400 WESTPARK DRIVE
ATTN WILLIAM L. CHADSEY
MCLEAN, VA 22101

SINGER COMPANY
1150 MC BRIDE AVENUE
ATTN TECH INFO CTR
LITTLE FALLS, NJ 07424

SPERRY RAND CORPORATION
SPERRY MICROWAVE ELECTRONICS
P.O. BOX 4649
ATTN MARGARET CORT
CLEARWATER, FL 33518

SPERRY RAND CORPORATION
SPERRY DIVISION
MARCUS AVENUE
ATTN TECH LIB
GREAT NECK, NY 11020

SPERRY RAND CORPORATION
SPERRY FLIGHT SYSTEMS
P.O. BOX 21111
ATTN O. ANDREW SCHOW
PHOENIX, AZ 85016

SPIRE CORPORATION
P.O. BOX 0
ATTN JOHN R. HULLUM
ATTN ROGER J. LITTLE
BEDFORD, MA 01730

SRI INTERNATIONAL
333 RAVENSWOOD AVENUE
ATTN ARTHUR LEE WHITSON
MENLO PARK, CA 94025

SYSTEMS, SCIENCE AND SOFTWARE, INC
P.O. BOX 1620
ATTN ANDREW R. WILSON
LA JOLLA, CA 92038

TEXAS INSTRUMENTS, INC
P.O. BOX 6015
ATTN TECH LIB
ATTN DONALD J. MANUS
DALLAS, TX 75265

TRW DEFENSE & SPACE SYS GROUP
ONE SPACE PARK
ATTN O. E. ADAMS
ATTN R. K. PLEWICH
ATTN L. R. MAGNOLIA
ATTN H. H. HOLLOWAY
ATTN W. GARGANO
REDONDA BEACH, CA 90278

TEXAS TECH UNIVERSITY
P.O. BOX 5404 NORTH CLELLER STATION
ATTN TRAVIS L. SIMMONS
Lubbock, TX 79417

UNITED TECHNOLOGIES CORP
HAMILTON STANDARD DIVISION
SEABLEY INTERNATIONAL AIRPORT
ATTN CHIEF ELECT DESIGN
WINDSOR LOCKS, CT 06093

WESTINGHOUSE ELECTRIC CORPORATION
ADVANCED ENERGY SYSTEMS DIV
P.O. BOX 10064
ATTN TECH LIB
PITTSBURGH, PA 15236

US ARMY ELECTRONICS RESEARCH
& DEVELOPMENT COMMAND
ATTN TECHNICAL DIRECTOR, DRDF-CT

HARRY DIAMOND LABORATORIES
ATTN CONDUCTORS DIVISION DIRECTORS
ATTN RECORD COPY, 81200
ATTN HDL LIBRARY, 81133 (3 COPIES)
ATTN HDL LIBRARY, 81133 (WOODBRIDGE)
ATTN TECHNICAL REPORTS BRANCH, 81333
ATTN CHAIRMAN, EDITORIAL COMMITTEE
ATTN LEGAL OFFICE, 87000

ATTN CHIEF, 21000
ATTN CHIEF, 21100
ATTN CHIEF, 21200
ATTN CHIEF, 21300 (5 COPIES)
ATTN CHIEF, 21400
ATTN CHIEF, 21500
ATTN CHIEF, 22000
ATTN CHIEF, 22100
ATTN CHIEF, 22300
ATTN CHIEF, 22800
ATTN CHIEF, 22900
ATTN CHIEF, 20240
ATTN WIMENITS, FL, NJ, 20240

ATTN HUPPLIN, FL, 22000
ATTN CHASE, FL, 21100
ATTN VALLIN, FL, 22100
ATTN FEMENIAS, FL, 22100
ATTN LEWIS, FL, 22100
ATTN BEYER, FL, 22100

DATE
ILMED
-8