

AD-A090 105

INDIANA UNIV AT BLOOMINGTON DEPT OF CHEMISTRY F/6 7/4
DEVELOPMENT AND CHARACTERIZATION OF A 9-MM INDUCTIVELY COUPLED --ETC(U)
SEP 80 A D WEISS, R N SAVAGE, G M HIEFTJE N00014-76-C-0838
TR-28 NL

UNCLASSIFIED

1 of 1
AD/A
000005

								END					
								DATE					
								FILMED					
								11-80					
								DTIC					

UNCLASSIFIED

SECURITY CLASSIFICATION OF THIS PAGE (When Data Entered)

12 B.S.

AD A090105

REPORT DOCUMENTATION PAGE		READ INSTRUCTIONS BEFORE COMPLETING FORM
1. REPORT NUMBER TWENTY-EIGHT ✓	2. GOVT ACCESSION NO. AD-A090105 (9)	3. RECIPIENT'S CATALOG NUMBER
4. TITLE (and Subtitle) Development and Characterization of a 9-mm Inductively Coupled Argon Plasma (ICP) Source for Atomic Emission Spectrometry.		5. TYPE OF REPORT & PERIOD COVERED Interim Technical Report
7. AUTHOR(s) A. D. Weiss, R. N. Savage, and G. M. Hieftje		6. PERFORMING ORG. REPORT NUMBER 35
9. PERFORMING ORGANIZATION NAME AND ADDRESS Department of Chemistry (14) TR 28 Indiana University Bloomington, IN 47405		8. CONTRACT OR GRANT NUMBER(s) N-14-76-C-0838
11. CONTROLLING OFFICE NAME AND ADDRESS Office of Naval Research Washington, D.C.		10. PROGRAM ELEMENT, PROJECT, TASK AREA & WORK UNIT NUMBERS NR 51-622
14. MONITORING AGENCY NAME & ADDRESS (if different from Controlling Office) (12) 34 LEVEL		12. REPORT DATE Sep 1980
16. DISTRIBUTION STATEMENT (of this Report) Approved for public release; distribution unlimited		13. NUMBER OF PAGES 32
17. DISTRIBUTION STATEMENT (of the abstract entered in Block 20, if different from Report)		15. SECURITY CLASS. (of this report) UNCLASSIFIED
18. SUPPLEMENTARY NOTES Prepared for publication in "ANALYTICA CHIMICA ACTA"		15a. DECLASSIFICATION/DOWNGRADING SCHEDULE
19. KEY WORDS (Continue on reverse side if necessary and identify by block number) (TL/min)		
20. ABSTRACT (Continue on reverse side if necessary and identify by block number) A new 9-mm (i.d.) inductively coupled plasma torch is described which supports a stable, analytically useful plasma at less than 500 watts of r.f. power and 7 min ⁻¹ total argon gas flow. Detection limits, working curves and other analytical characteristics of the new device are compared with those of both a miniature (13-mm i.d.) and conventional (19-mm i.d.) ICP. Although temperatures of the new plasma are somewhat lower than those in the larger plasmas, the new system offers promise for future, miniaturized ICP instruments.		

DTIC ELECTED
OCT 8 1980
S C

DDC FILE COPY

DD FORM 1 JAN 73 1473

EDITION OF 1 NOV 65 IS OBSOLETE
S/N 0102-014-6601

UNCLASSIFIED
SECURITY CLASSIFICATION OF THIS PAGE (When Data Entered)

176685-7m 80 10 7 058

OFFICE OF NAVAL RESEARCH

Contract N01-76-C-0888

Task No. NF 051-632

TECHNICAL REPORT NO. 28

DEVELOPMENT AND CHARACTERIZATION OF A 9-mm
INDUCTIVELY COUPLED ARGON PLASMA (ICP) SOURCE
FOR ATOMIC EMISSION SPECTROMETRY

by

A. D. Peers, B. N. Savage, and G. M. Hieftje

Prepared for Publication

in

ANALYTICA CHIMICA ACTA

Indiana University

Department of Chemistry

Bloomington, Indiana 47405

September 30, 1980

Reproduction in whole or in part is permitted for
any purpose of the United States Government

Approved for Public Release; Distribution Unlimited

BRIEF
~~~~~

A new 9 mm ICP torch supports an analytically useful plasma on 500 watts of r.f. power and less than 7 L min<sup>-1</sup> of argon gas.

|                      |                                     |
|----------------------|-------------------------------------|
| Accession For        |                                     |
| Author               | <input checked="" type="checkbox"/> |
| Editor               | <input type="checkbox"/>            |
| Reviewer             | <input type="checkbox"/>            |
| Editorial Board      | <input type="checkbox"/>            |
| Editorial Office     | <input type="checkbox"/>            |
| Administrative Codes |                                     |
| 1. Journal           |                                     |
| 2. Special           |                                     |
| <b>A</b>             |                                     |

## ABSTRACT

~~~~~

A new 9-mm (i.d.) inductively coupled plasma torch is described which supports a stable, analytically useful plasma at less than 500 watts of r.f. power and 7 L min⁻¹ total argon gas flow. Detection limits, working curves and other analytical characteristics of the new device are compared with those of both a miniature (13-mm i.d.) and conventional (19-mm i.d.) ICP. Although temperatures of the new plasma are somewhat lower than those in the larger plasmas, the new system offers promise for future, miniaturized ICP instruments.

The current acceptance of the ICP has been stimulated by a number of favorable performance characteristics (1-6). However, the high initial and operating costs and large physical dimensions of such devices have limited their use mostly to larger laboratory facilities with high sample throughput. In order to expand the use of ICP systems a number of prominent workers have focussed upon improving the plasma's efficiency by reducing both its power and gas-flow requirements.

Several new torch designs have been introduced which operate on lower power and argon gas consumption without sacrificing the analytical capabilities of the ICP. A substantial reduction in argon consumption has been realized by employing water rather than gas for cooling the outer tube of the torch (7). The water-cooled plasma could be sustained on as little as 2 L min^{-1} Ar, but yielded low sensitivity. Allemand and Barnes (8) used computer modelling to design torches which not only consumed less gas, but also ignited more easily. Genna *et al.* (9), by modifying the tangential coolant tube inlet of a torch, were able to produce higher swirl velocities and thereby allow the plasma to be sustained at a 30 to 40% lower argon flow rate. This latter modification also improved the discharge performance of the plasma.

An alternative approach toward reducing the argon consumption and power requirement of an ICP has been to decrease the size of the torch. Savage and Hieftje (1) have described a reduced-size ICP which operates at less than 1 kW of r.f. power and an argon flow of 8 L min^{-1} . Sig-

nificantly, these economies have been realized without degrading analytical performance. There appears to be no fundamental reason why a further reduction in the size of the ICP could not be achieved. Allemand et al. (10) have reported the development and characterization of both 13-mm and 9-mm ICP torches. The 13-mm ICP performed similarly to conventional ICP's, but with 20% lower argon consumption and 23% less r.f. power. The 9-mm ICP yielded poorer detection limits, particularly at lower r.f. power levels (700 watts). Other performance characteristics of the 9-mm ICP were not discussed in the communication.

In the present study, a new 9-mm torch is reported which supports a plasma at approximately 1/3 the r.f. power and less than half the Ar flow of a conventional torch. Although the resulting plasma yields somewhat greater interelement interferences than its larger counterpart, it offers excellent sensitivity and linearity. Moreover, with its low operating requirement (500 W, 7 L min⁻¹ Ar), it suggests the future development of compact, inexpensive instrumentation for ICP spectrometry.

EXPERIMENTAL

~~~~~

Selection of Plasma Size and Operating Power. It is appropriate to ask the degree to which the ICP can be reduced in size and yet remain a viable analytical tool. Although a number of considerations necessary to answer this question have been offered before (8,9), a fundamental limit is posed by the "skin effect" exhibited by all high-frequency discharges. According to the skin-effect model, most of the energy in such discharges

is introduced near the outer boundary (or skin) of the plasma; the energy introduction decreases in an approximately exponential fashion toward the plasma center. As a result, the conditions (temperature, conductivity, etc.) in the plasma center do not markedly influence the coupling of r.f. energy into the discharge; this feature is responsible in part for the relative immunity of the ICP to changes in sample aerosol composition.

The distance in the plasma to which the energy-coupling field penetrates is characterized by the "skin depth" which, by definition, is the depth where the r.f. energy has been reduced to 36.8% ( $1/e$ ) of its surface (skin) value. For a plasma operating at 27.12 MHz, the skin depth is approximately 2 mm. Therefore, at a distance of 4 mm from the discharge surface, the r.f. energy addition should be only  $(0.37)^2 = 0.13$  of its surface value. Stated differently, sample sent into the plasma a distance of 4 mm from its surface should have less than a 13% effect on energy coupling. Taking this degree of perturbation to be the maximum permissible, the plasma must have a diameter of at least 8 mm greater than that of the aerosol stream sent into it. Assuming nearly laminar aerosol flow, and given the 0.75-1.0 mm sample tube found in most torches, one then calculates a minimum plasma diameter of 9 mm, the size of torch chosen for the present work.

Because it is desirable that the 9-mm plasma operate as well as a conventional one, the smaller torch was sustained at comparable power density. Using the toroidal model for plasma volume described earlier (1) and inner and outer toroid radii of 1.5 and 3.5 mm, respectively, a plasma volume of  $49 \text{ mm}^3$  was calculated. To produce in this discharge the same power density of  $11.7 \text{ W mm}^{-3}$  computed for larger (miniature and conventional) plasma, an r.f. input of approximately 570 W is needed.



An empirical means of establishing the optimal ICP input power was offered by Greenfield and Burns (11) who suggested that sources be compared on the basis of the signal-to-background (S/B) ratios they provide. Figure 1 reveals the relationship between S/B and r.f. power input for the torch used in the present study. From a third-order spline fit to these data, an applied r.f. power of 570 W seems optimal.

The foregoing considerations argue that a 9-mm torch operated at an applied r.f. power near 570 W should provide the most efficient ICP design. However, practical considerations urge that even lower powers be utilized, if they are practicable. In particular, extremely inexpensive r.f. power supplies of 500 W capabilities have been developed for use in amateur radio transmissions. Moreover, at power levels of 500 W and below, compact solid-state supplies can be employed. For these reasons, we elected to test the new 9-mm torch at an applied power of 500 W, anticipating that a slight worsening in analytical characteristics might result.

Instrumentation. Most of the experimental system used in this study is identical to that described previously (1). Details concerning slight alterations are discussed below.

Load Coils. In order to increase both the electric field strength and the magnetic flux density needed to sustain a smaller plasma (3,8,12,13), a new water-cooled load coil was constructed. The new coil consisted of four turns of 1.6-mm copper tubing, which covered a length of 1 cm in the plasma and had a diameter of 2 cm, to accommodate the smaller plasma torch. A spark from a Tesla coil served as the plasma igniter.

Plasma Torch. The basic configuration of the torch used in this study, shown in Figure 2, is the same as that in both the miniature and conventional ICP (1) except for a reduction in size. In all phases of the development and construction of this device, hydrodynamic techniques were utilized to insure proper function (14).

Several design features of the new torch are critical to its proper operation. The quartz tangential inlet tubes for both the plasma and coolant gases were constricted to 1.5 mm to increase the swirl velocity. Also, the outer diameter of the flared-out portion of the plasma tube was increased to force the coolant gas against the coolant tube and thereby shield the tube from the plasma and further increase the swirl velocity. The length (3 mm), shape, and smooth taper of the flared-out portion also proved to be critical to maintain a stable vortex.

The 0.75-mm center capillary injection tube extended from the base of the torch to the top of the plasma tube to produce a laminar jet of sample aerosol. Injection tube diameters from 0.60 to 0.75 mm were examined successfully with the larger diameter being ultimately selected. This larger diameter permits longer sample residence times in the plasma, but seems not to markedly affect r.f. energy coupling into the discharge. As mentioned earlier, the size of the sample channel is especially critical in this smaller ICP because of the likelihood of the sample aerosol intercepting the energy-coupling "skin" region. The coolant tube extended at least 12 mm above the plasma tube to minimize optical background caused by entrained air components.

Nebulizer and Spray Chamber. Sample was introduced into the plasma by means of a cross-flow nebulizer (Model TN-1, Plasma-Therm Inc., Kresson, New Jersey). The nebulizer was mounted in a teflon cap which fits over one end of a dual tube spray chamber similar to type 2C described by Schutyser and Janssons (15). Sample solution was delivered at a rate of 0.85 mL min<sup>-1</sup> by a peristaltic pump. No desolvation apparatus was employed.

Procedure for Detection Limit Determinations and SRM Analyses. The 9-mm ICP was utilized to establish detection limits of various elements and their concentrations in NBS standard reference materials (SRM). Operating parameters for these determinations are given in Table 1. For detection limit investigations, the viewing region in the plasma was optimized for each element by rotating the 150-mm (diameter) collection mirror. During the determination of eight elements in NBS standard 1571, a compromise viewing region was selected for the elements of interest. All standard solutions and blanks were appropriately matrix-matched for SRM analyses.

Nebulizer flow rate was limited in all cases to 0.86 L min<sup>-1</sup>, above which the plasma had a tendency to extinguish; moreover, below 0.60 L min<sup>-1</sup> the pneumatic nebulizer was found not to function efficiently. Five measurements of both the sample and blank were used to calculate the detection limit of each element according to the procedure outlined by Winefordner (16).

Plasma Excitation Temperature Measurements. Excitation temperatures in the 9-mm plasma were determined using the slope or Atomic Boltzmann Plot method (17). Background-corrected intensities were obtained for three Fe emission lines whose wavelengths, excitation energies, statistical weights,

and relative transition probabilities are documented elsewhere (19). A 1000  $\mu\text{g mL}^{-1}$  solution of Fe was employed. Conditions used during temperature measurements are identical to those in Table 1 except for a narrowing of the monochromator slits to 40  $\mu\text{m}$  for better resolution. The observation zone was centered at 15.5 mm above the load coils and encompassed a 4.1 mm vertical segment of the plasma.

Plasma Spectral Background Scans. The optical arrangement used for spectral background scans has been described elsewhere (19). With this design the viewing region was a rectangle 8 mm high by 80  $\mu\text{m}$  wide centered 11 mm above the load coils. Operating conditions for these scans are listed in Table 1. Spectral background scans were obtained while a solution containing 100  $\mu\text{g mL}^{-1}$  Mn and 10  $\mu\text{g mL}^{-1}$  Ca was being sprayed into the plasma.

Plasma Interference Experiments. Classical interferences were examined with the modified optical design and silicon intensifier tube (SIT) detection system described in a previous communication (20). A minor alteration was the placement of a neutral-density filter in front of the entrance slit of the monochromator to prevent saturation of the detector.

Reagents. Stock solutions were prepared according to Dean and Rains (21). All salts and acids were reagent-grade and water used in dilution was distilled-deionized. Where necessary, solutions and blanks were matrix-matched by addition of the appropriate salt and acid.

## RESULTS AND DISCUSSION

Plasma Ignition and Operating Characteristics. Plasma ignition was relatively simple under the conditions listed in Table 1. The best method for ignition was to form initially a filamentary plasma (9,12) at low r.f. power (500 watts). Once the filamentary plasma was formed, the r.f. power was increased to  $\sim 1$  kw and a conventional toroidal plasma stabilized. Next, the nebulizer gas flow was initiated (cf. Table 1); occasionally (30% of the time), initiation of nebulizer gas flow would extinguish the plasma, requiring the ignition procedure to be repeated. Operating conditions were then set for the particular experiment.

During operation, the 9-mm plasma would readily accept sample solutions up to  $10,000 \mu\text{g mL}^{-1}$  without difficulty. However, it was found that salt build-up in the tip of the capillary tube occasionally required ultrasonic cleaning in a dilute acid bath.

Excitation Temperature. An excitation temperature of 4000 K was measured in the 9-mm plasma at a height of 15.5 mm above the load coils. This temperature is considerably less than the 5000 K assigned to the conventional (19-mm) ICP (1), but not significantly lower than the 4300 K of the miniature (13-mm) discharge (1). Partly responsible for this lower temperature is the reduced power density (500 W rather than 570 W) at which the 9-mm plasma operates. Moreover, the uncertainty associated with this method of determining excitation temperatures ( $\pm 10\%$ ) lessens significantly the difference between the 9-mm ICP and the larger versions.

Background Spectrum. As with the miniature and conventional ICP's, the background of the 9-mm discharge (cf. Figure 3) was found to be complex and consisted of three types of spectral features: 1) continuum, 2) line spectra, and 3) band spectra. A detailed discussion of these features as they relate to the miniature ICP can be found in a previous communication; that discussion should apply to the 9-mm ICP as well (23).

Detection Limits. Table 2 lists detection limits for a number of elements determined in the 9-mm plasma, the 13-mm ICP, a conventional (19-mm) ICP and literature values. For every element but Fe, detection limits obtained with the 9-mm torch are not significantly different from those obtained with the larger plasmas. No explanation can be given for the slightly poorer performance of the smaller discharge for Fe determination.

Analytical Calibration Curves. For the conventional ICP the linearity of the calibration curves is over 4 to 5 orders of magnitude; similar results have been obtained with the miniature ICP (1). Calibration curves for the 9-mm ICP, shown in Figure 4, indicate the same wide dynamic range expected from other ICP systems.

Interferences. To examine the susceptibility of the 9-mm ICP to classical solute vaporization interferences, the influence of phosphate on the spatial emission profiles of both Ca I and Ca II was investigated. These effects were examined at two different r.f. power levels. Figure 5 illustrates the influence of phosphate on the Ca I (422.7 nm) line; curve A was obtained from a solution containing  $50 \mu\text{g mL}^{-1}$  of Ca while

curve B is from the same solution but with phosphate added at a molar ratio of 50 to 1 ( $\text{PO}_4:\text{Ca}$ ). Profile X was obtained at 500 W r.f. power and profile Y at 750 W. The addition of  $\text{PO}_4$  as a matrix interferent clearly causes a shift in the Ca I emission to regions higher in the plasma. Also, at higher r.f. power the profile shifts toward lower regions of the plasma. From these profiles, it is evident that, at any applied power, phosphate has an effect on Ca I emission, but that a viewing region can be selected where the influence would be minimal or nonexistent.

The profiles in Figure 6 indicate that  $\text{PO}_4$  causes a significant depression of the Ca II signal rather than just a spatial shift in intensity. Moreover, changes in applied r.f. power have little effect upon the degree of the depression. Because of this reduction in intensity, the interference of  $\text{PO}_4$  on Ca II emission cannot be nullified by spatial selection in the plasma, as was possible for the Ca I line. Although no mechanism can be offered here for these findings, the Ca I emission line would clearly offer the better conditions for minimizing the interference of  $\text{PO}_4$  in a practical analysis.

The effects of Na and Cs on Ca emission were also examined in the 9-mm ICP. Profiles were obtained for both the Ca I and Ca II lines at r.f. powers of 500 W and 750 W. Figure 7 shows the influence Cs on Ca I emission. In the two profiles of Figure 7 curve A represents a  $5 \mu\text{g mL}^{-1}$  Ca solution and curve B the same solution but with Cs added at a molar ratio of 140:1 (Cs:Ca). At both 500 W and 750 W there is a significant enhancement of the Ca I emission when Cs is present although the enhancement at 750 W is somewhat lower. The influence of Cs on Ca II emission

is shown in Figure 8. At 500 W there is a significant depression of the Ca II emission while at 750 W there is relatively little effect (a downward shift of emission occurs as power is increased). The influence of Na on Ca emission follows the same pattern as discussed for Cs.

Based on these results, viewing regions can be selected to minimize the effect of an easily ionized species upon Ca. The influence on the Ca II emission is considerably less than on Ca I, particularly at higher r.f. power levels and would provide the best analytical conditions. The pattern displayed by these profiles strongly suggests that the smaller ICP suffers a greater degree of "ionization" interference than a larger ICP.

It is interesting in Figures 8 and 9 that Ca II profiles peak higher in the plasma than Ca I profiles under any given set of operating conditions. Also, although the profiles of both lines are shifted downward by increases in r.f. power, the shift for the ion line is greater. These trends are the same as those expected from experience in an analytical flame, where ionization often lags atom formation and is strongly influenced by source temperature. In the ICP, however, it is doubtful that these straightforward mechanisms prevail, and further evidence will be needed to completely explain the observed behavior.

#### Determination of Various Elements in NBS Standard 1571 Orchard Leaves.

To fairly assess the performance of the 9-mm ICP system, determination of several elements in a "real" sample was undertaken. Table 3 lists the determined values for eight elements along with the corresponding certified values for NBS standard 1571. For all elements but Mn the values obtained were within the uncertainty range of the certified values. The Mn determination



was only slightly higher than the acceptable certified value. The results indicate that the 9-mm ICP performs with good sensitivity and accuracy in the routine analysis of biological material.

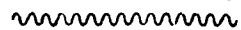
#### CONCLUSIONS

~~~~~

Further reductions in the consumption of argon gas and r.f. power have been achieved through scaling down the ICP torch with little loss of analytical performance. The 9-mm torch can support a stable plasma under more economical operating conditions while accepting sample solution readily. The ability to operate the smaller ICP stably at 500 W offers the prospect of solid-state ICP r.f. generators, which would reduce both cost and physical size of ICP-AES systems.

However, interferences in the current system are somewhat worse than in conventional plasmas. Because interferences from such disparate concomitants as Al, PO₄, Cs, and Na were found to persist in the mini-ICP even at elevated r.f. power levels (750 W), they are believed to arise in part from the effect of sample components on the efficiency of energy coupling into the discharge. If this assumption is correct, operating the 9-mm ICP at higher frequencies (e.g. 40.68 MHz) should improve performance; at this higher frequency, the skin depth would be reduced and intrusion of sample material into the energy-coupling region would be lessened.

ACKNOWLEDGEMENT



Taken in part from the M.S. thesis of A. D. Weiss and from the Ph.D. thesis of R. N. Savage. Supported in part by the National Science Foundation through grants CHE 79-18073 and CHE 77-22152 and by the Office of Naval Research.

REFERENCES

1. R.N. Savage and G.M. Hieftje, *Anal. Chem.*, 51, 408 (1979).
2. G.W. Dickinson and V.A. Fassel, *Anal. Chem.*, 41, 1041 (1969).
3. V.A. Fassel and R.N. Kniseley, *Anal. Chem.*, 46, 1110A (1974).
4. S. Greenfield, I.L. Jones, H. McD. McGeachin and P.B. Smith, *Anal. Chim. Acta*, 74, 225 (1975).
5. P.W.J.M. Boumans and F.J. de Boer, *Spectrochim. Acta, Part B*, 27, 391 (1972).
6. P.W.J.M. Boumans, F.J. de Boer, F.J. Dahmer, H. Hoelzel and A. Meir, *Spectrochim. Acta, Part B*, 30, 449 (1975).
7. G.R. Kornblum, W. van der Waa and L. de Galan, *Anal. Chem.*, 51, 2378 (1979).
8. C.D. Allemann and R.M. Barnes, *Appl. Spectrosc.*, 31 434 (1977).
9. J.L. Gema, R.M. Barnes and C.D. Allemann, *Anal. Chem.*, 49, 1450 (1977).
10. C.D. Allemann, R.M. Barnes and C.C. Wohlers, *Anal. Chem.*, 51, 2392 (1979).
11. S. Greenfield and D.T. Burns, *Spectrochim. Acta, Part B*, 34, 423 (1979).
12. C.D. Allemann and R.M. Barnes, *Spectrochim. Acta, Part B*, 33, 513 (1978).
13. R.C. Hilder and R.J. N. J. *J. Appl. Phys.*, 40, 5260 (1969).
14. U. Sexton, R.N. Savage and G.M. Hieftje, *Appl. Spectrosc.*, 33, 643 (1979).

15. P. Schutyser and E. Janssens, *Spectrochim. Acta, Part B*, 34, 443 (1979).
16. J.D. Winefordner, P.A. St. John and W.J. McCarthy, *Anal. Chem.*, 39, 1495 (1967).
17. R.H. Tourin, "Spectroscopic Gas Temperature Measurements", Elsevier, New York, 1962, pp 47-48.
18. I. Reif, V.A. Fassel, R.N. Kniseley and D.J. Kalnicky, *Spectrochim. Acta, Part B*, 33, 807 (1978).
19. R.N. Savage, "Development of Highly Efficient Inductively Coupled Plasma Systems for Multielement Atomic Emission Spectrometry", Ph.D. Thesis, Indiana University, Bloomington, Indiana, 1979.
20. R.N. Savage and G.M. Hieftje, *Anal. Chem.*, 52, 1267 (1980).
21. J.A. Dean and T.C. Rains, "Standard Solutions for Flame Spectrometry", Chapter 13 in "Flame Emission and Atomic Absorption Spectrometry", Vol. 2, J.A. Dean and T.C. Rains, Eds., Marcel Dekker, New York, 1971.
22. S. Greenfield, H. McD. McGeachin and P.B. Smith, *Talanta*, 33, 1 (1976).
23. R. N. Savage and G. M. Hieftje, *Anal. Chim. Acta* (in press--1980).

Table 1

General Operating Conditions for 9-mm ICP

	Plasma Ignition	Plasma Operation
r.f. power	1.0 kW	500 W
Ar flows (L min^{-1})		
coolant	9.8	6.4
plasma	0.42	---
nebulizer	---	0.75
Sample uptake rate	---	1.2 mL min^{-1}
Monochromator slits	width 50 μm (0.2 \AA spectral slit width)	
	height 5 mm	
Time Constant	1 sec	

Table 2

Detection Limits (ng ml^{-1}) in Various ICP Sources

Element	Spectral Line (nm)	9-mm ICP	13-mm ICP (1)	Conventional (19-mm) ICP (1)	19-mm torch	Literature *
Al	396.15	4	5	3	2	(2)
Ba II	455.50	0.6	**	**	0.1	(3)
Ca II	393.37	0.08	0.07	0.04	0.07	(3)
Cd	228.80	10	42	13	30	(2)
Cu	324.75	1	8	2	1	(3)
Fe	371.99	51	10	12	5	(2)
Mg	285.21	2	6	2	0.7	(3)
Na	588.49	0.5	0.7	0.2	0.2	(3)
Ni	352.45	8	4	15	6	(2)
Pb	405.78	25	33	40	8	(2)
Zn	213.86	10	71	23	10	(12)

* Numbers in parenthesis are literature references

** Not determined

Table 3

Results of Analysis of NBS Standard 1571 Orchard Leaves
Using 9-mm ICP Torch

Element	Present Study ($\mu\text{g/g}$)	Certified Value ($\mu\text{g/g}$)
Ca	2.11 *	2.09 ± 0.03 *
K	1.48 *	1.47 ± 0.03 *
Mg	0.64 *	0.62 ± 0.02 *
Fe	313	300 ± 20
Mn	96	91 ± 4
Pb	47	45 ± 3
Zn	25	25 ± 3
Cu	11	12 ± 1

*wt percent

FIGURE LEGENDS

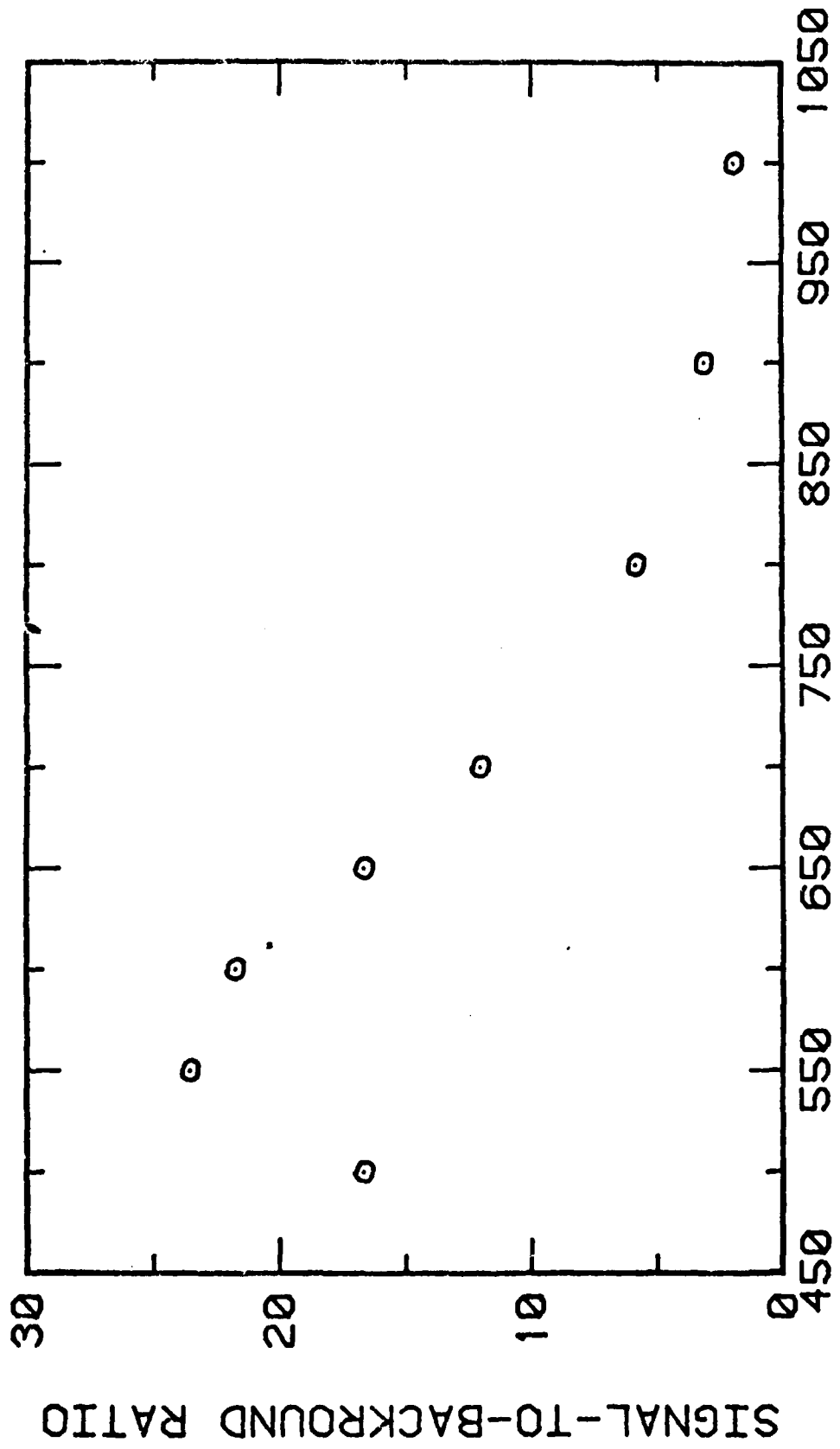
- Figure 1. Effect of applied rf power on the signal-to-background ratio of the new torch at the 422.7 nm Ca line. A 10 $\mu\text{g}/\text{mL}$ aqueous solution of Ca was aspirated into the plasma during all signal measurements; background readings were taken at the same wavelength with a blank being aspirated.
- Figure 2. Left: 9 mm ICP torch construction. Except for capillary injector, all tubing is of 1-mm wall thickness.
Right: Photograph of 9 mm ICP torch.
- Figure 3. Typical background spectrum of 9 mm ICP with 100 $\mu\text{g mL}^{-1}$ Mn and 10 $\mu\text{g mL}^{-1}$ Ca aspirated into it.
- Figure 4. Analytical calibration curves obtained with the 9 mm ICP.
- ⊙ Ba II (455.4 nm)
 - ⊠ Na I (588.9 nm)
 - △ Ba I (553.6 nm)
 - ◇ Fe I (371.9 nm)
- Figure 5. Effect of PO_4 on Ca I (422.7 nm) emission profiles with changing rf power levels (Frame X, 500 W; Y, 750 W). Curve A represents analyte (50 $\mu\text{g mL}^{-1}$ Ca) signal and curve B analyte plus interferent (50:1 molar ratio PO_4 :Ca). Relative scales X, 10^6 ; Y, 10^5 .

Figure 6. Effect of PO_4 on Ca II (393.4 nm) emission profiles with changing rf power levels (Frame X, 500W; Y, 750 W). Curve A represents analyte ($50 \mu\text{g mL}^{-1}$ Ca) signal and curve B analyte plus interferent (50:1 molar ratio PO_4 :Ca). Relative scales X 10^4 ; Y, 10^5 .

Figure 7. Effect of Cs on Ca I (422.7 nm) emission profiles with changing rf power levels (Frame X, 500 W; Y, 750 W). Curve A represents analyte ($5 \mu\text{g mL}^{-1}$ Ca) signal and curve B analyte plus interferent (140:1 molar ratio Cs:Ca). Relative scales X, 10^3 ; Y, 10^4 .

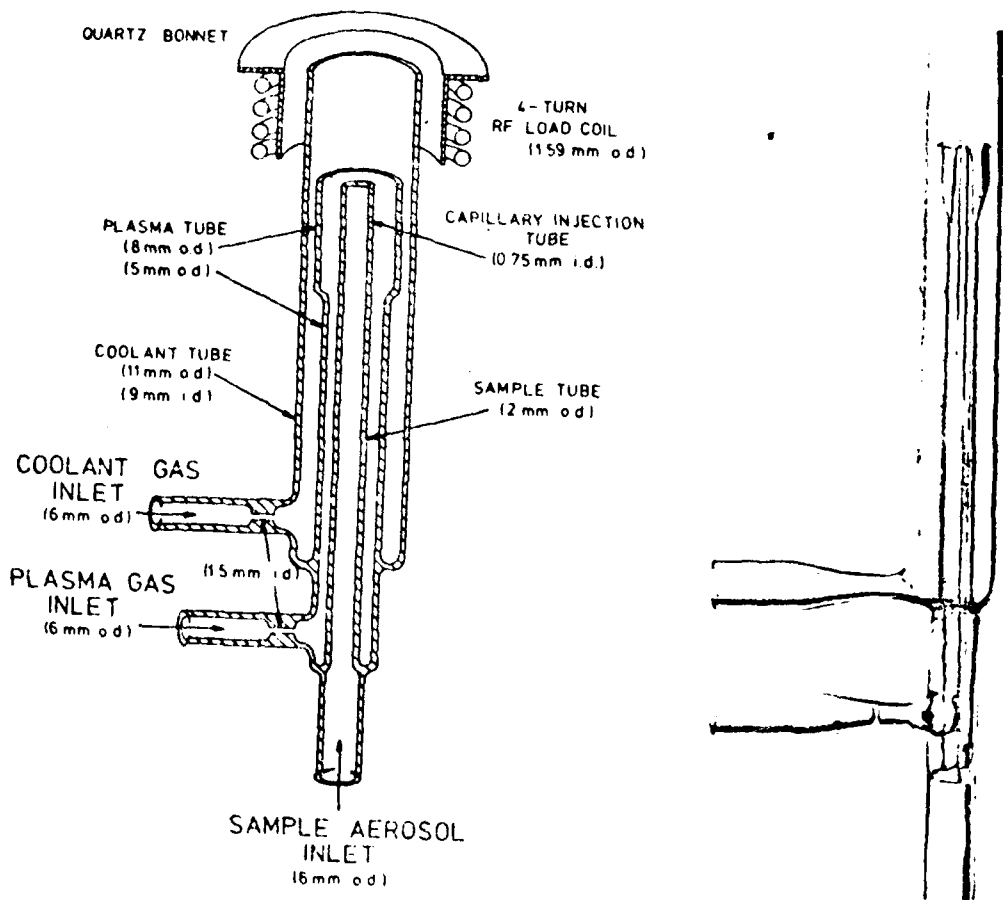
Figure 8. Effect of Cs on Ca II (393.4 nm) emission profiles with changing rf power levels (Frame X, 500 W; Y 750 W). Curve A represents analyte ($5 \mu\text{g mL}^{-1}$ Ca) signal and curve B analyte plus interferent (140:1 molar ratio Cs:Ca). Relative scales X, 10^4 ; Y, 10^5 .

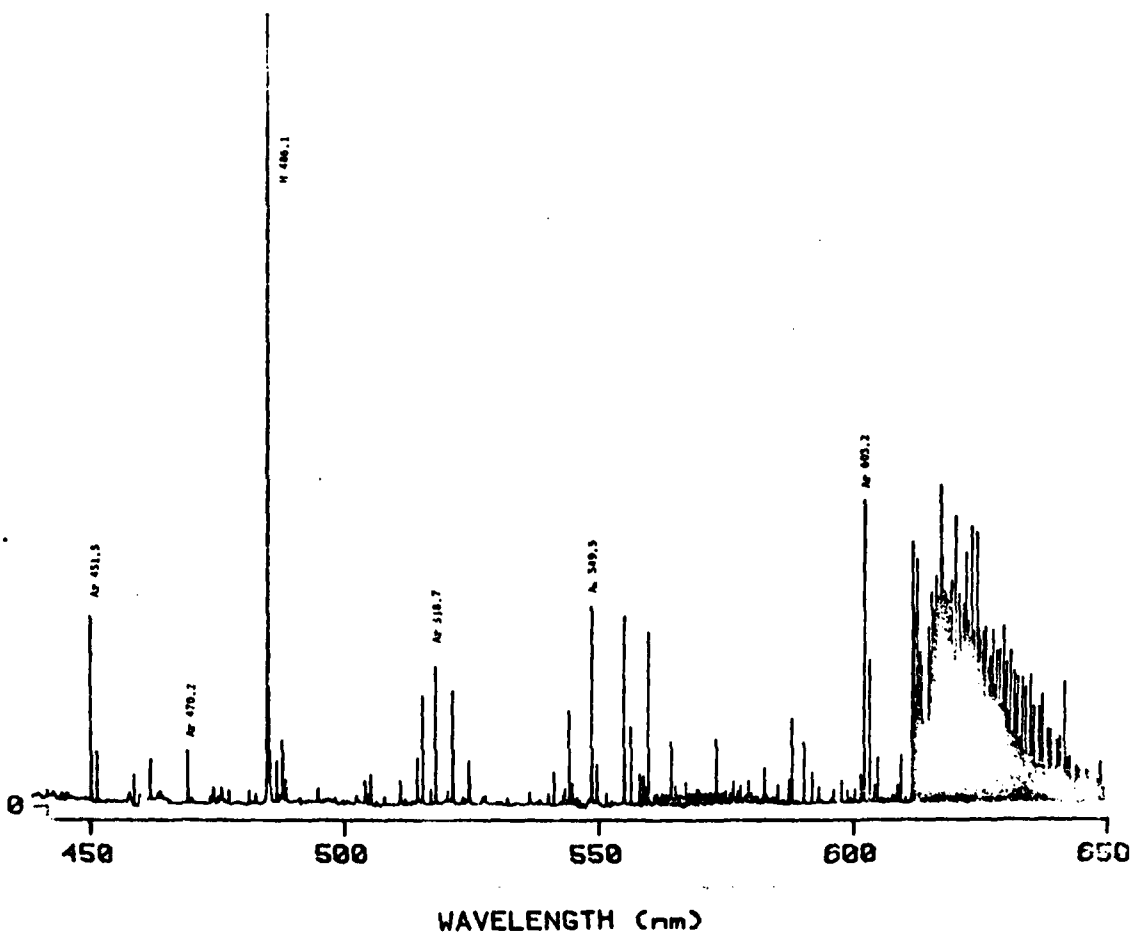
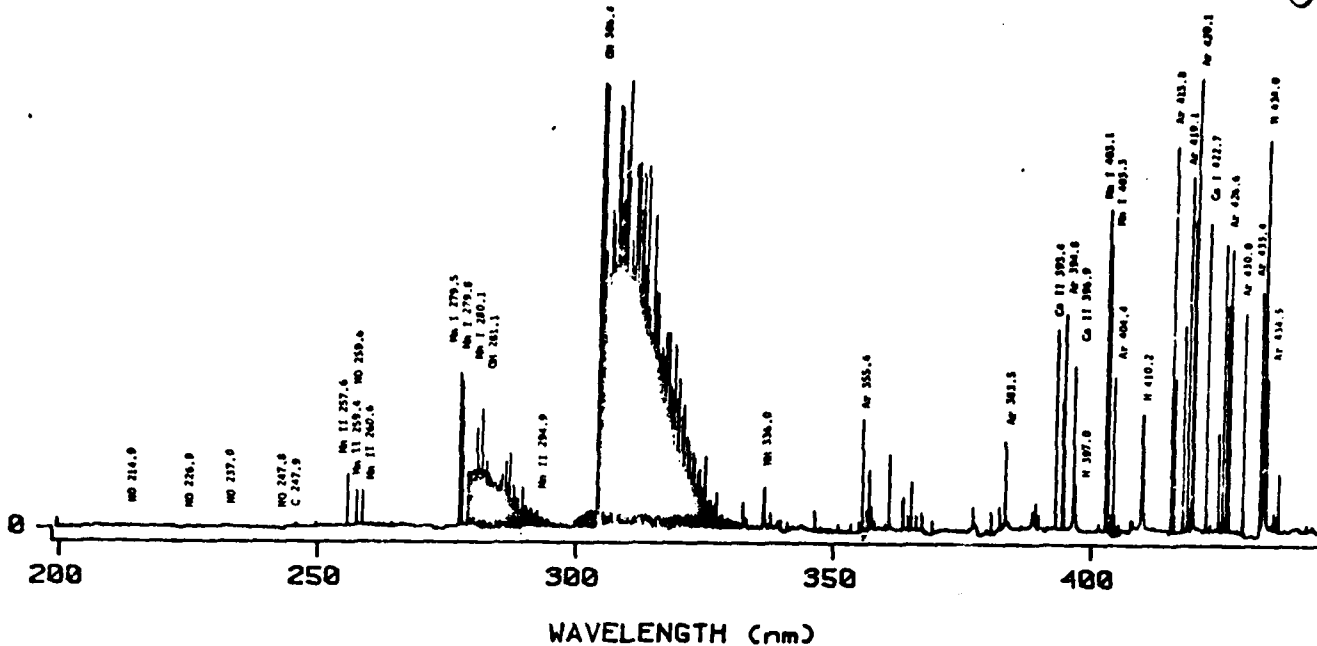
1



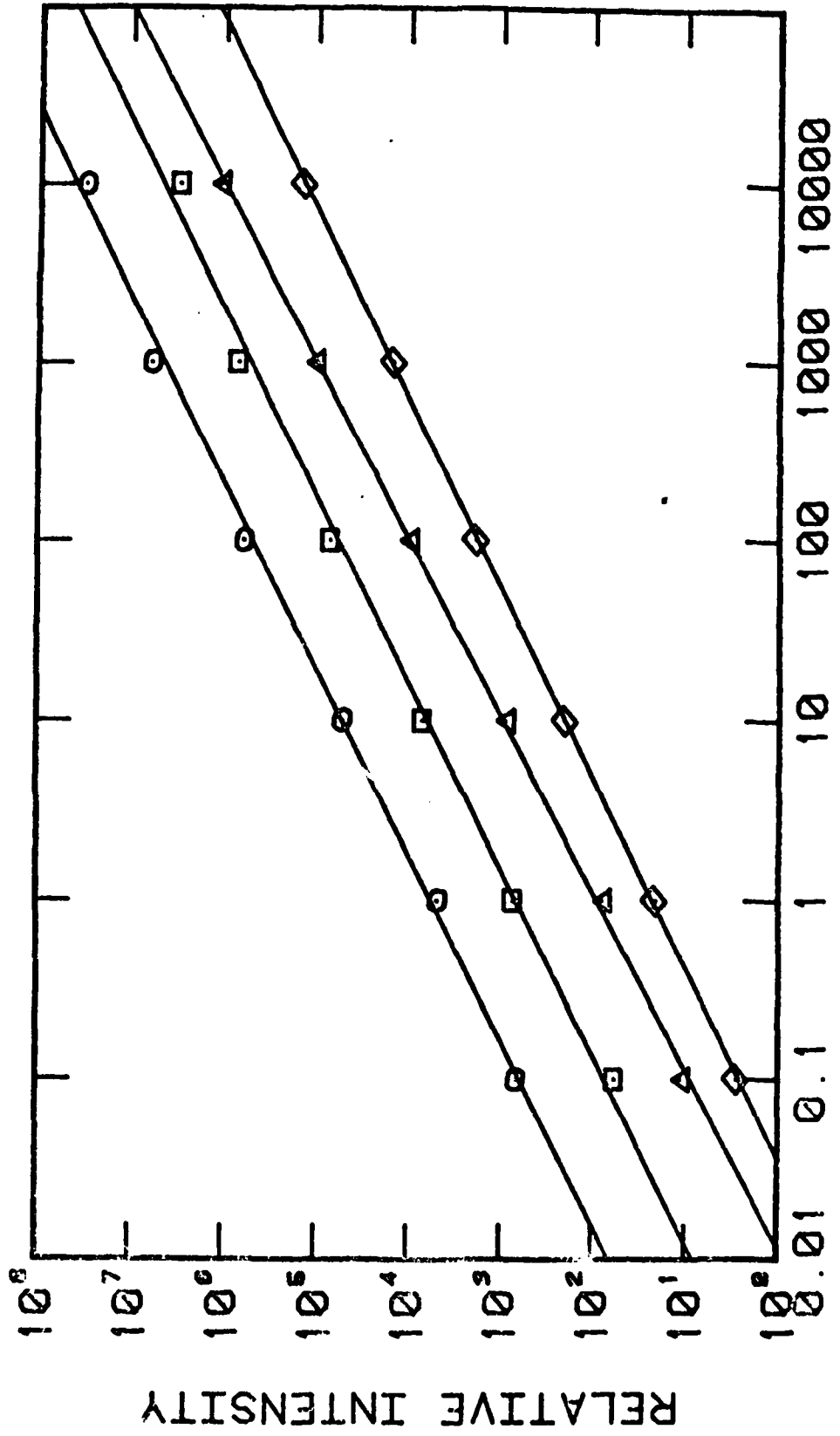
R.F. POWER (watts)

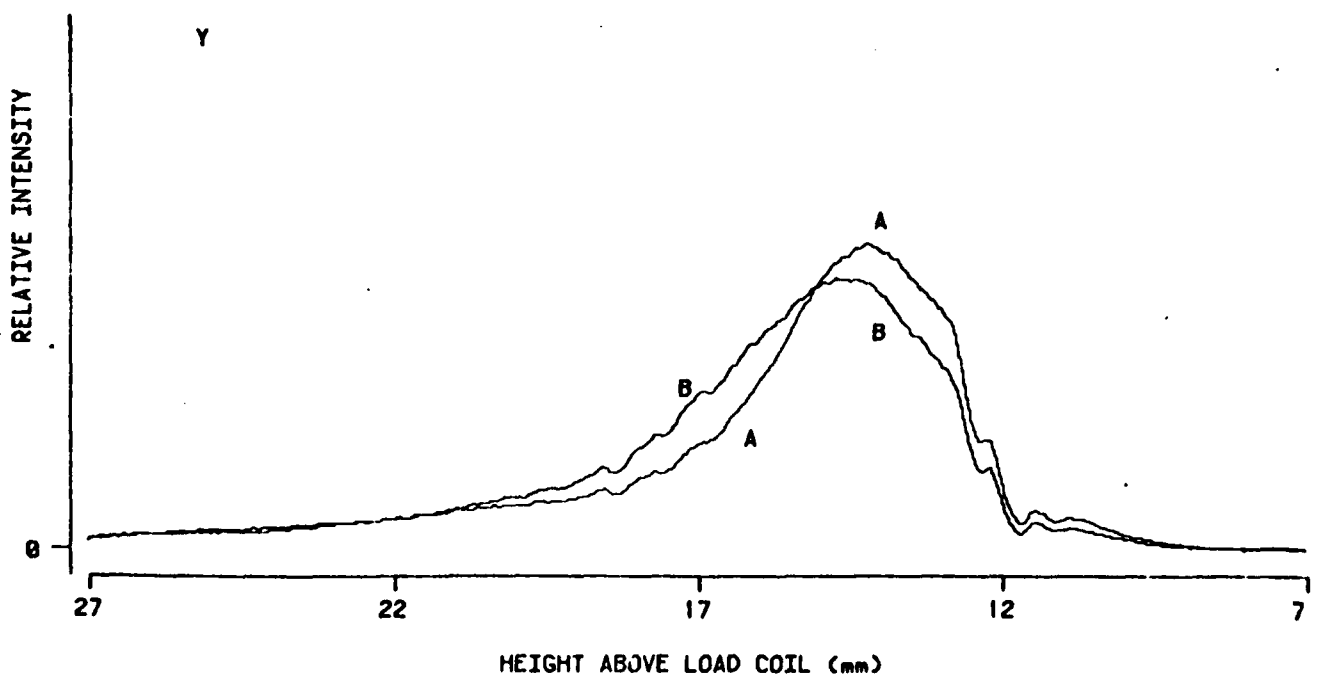
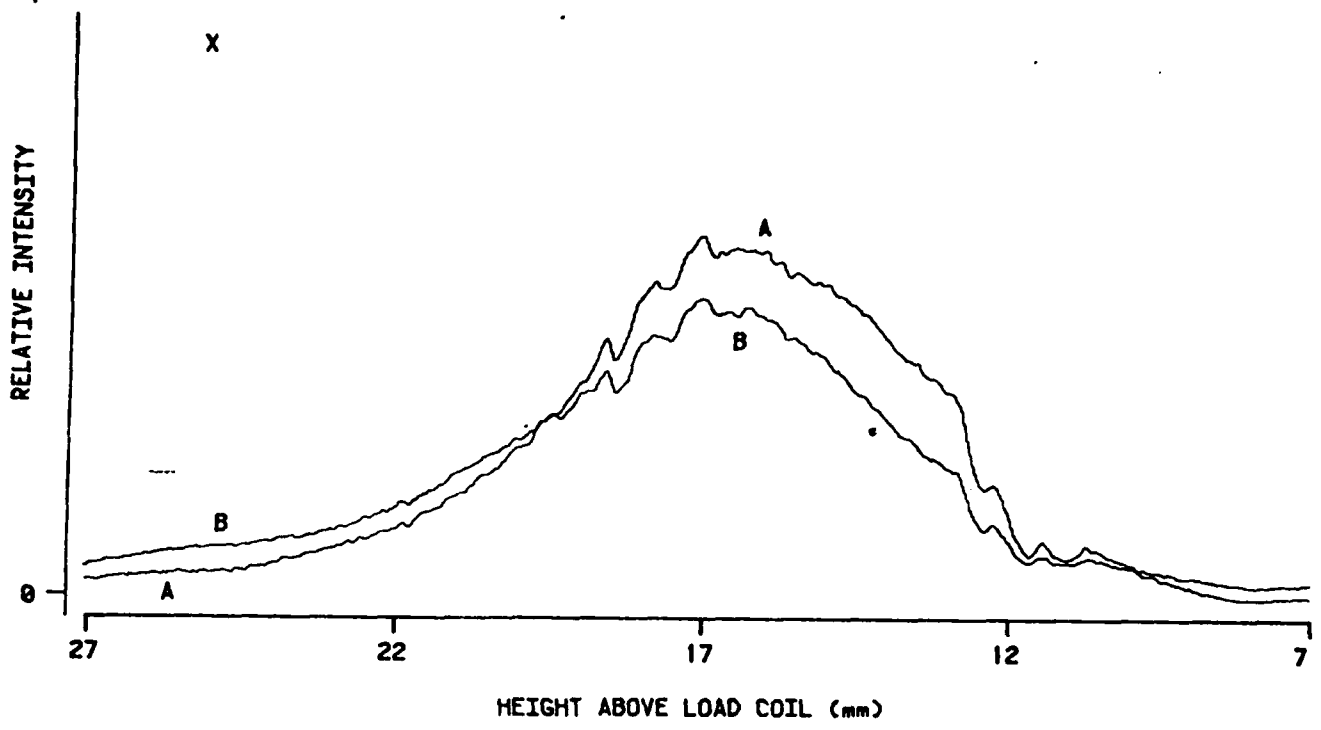
SIGNAL-TO-BACKGROUND RATIO

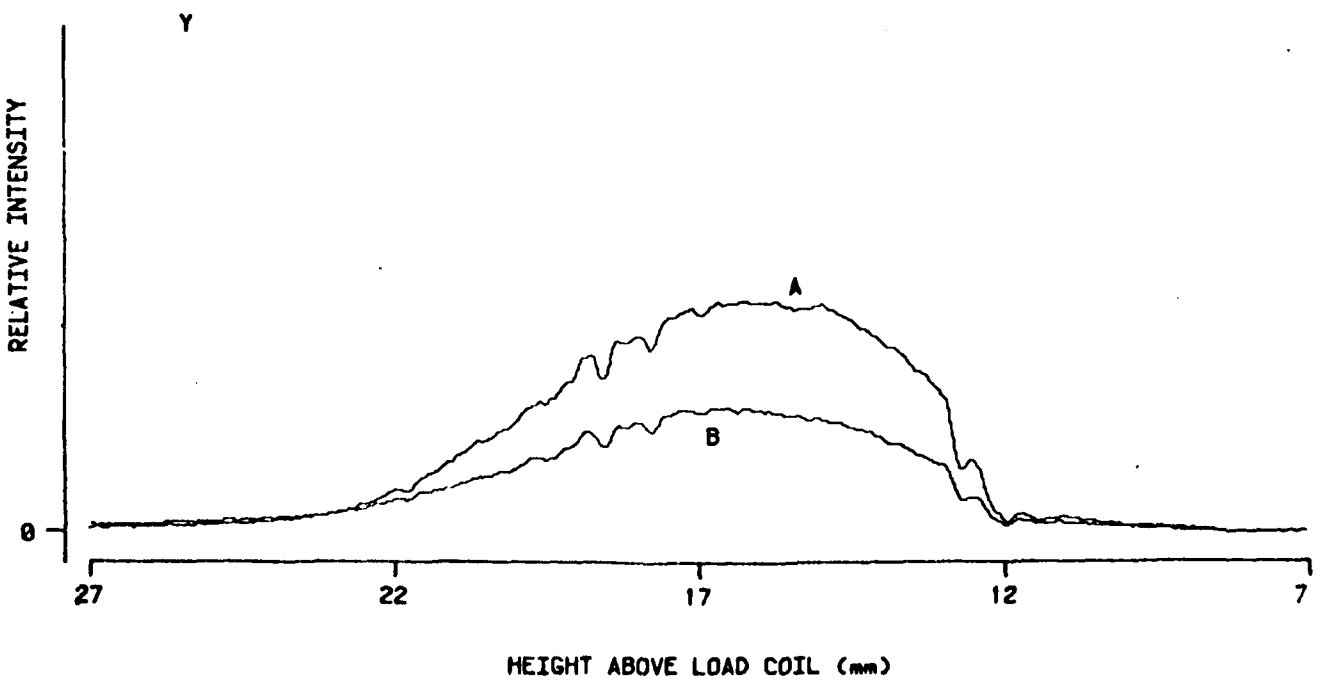
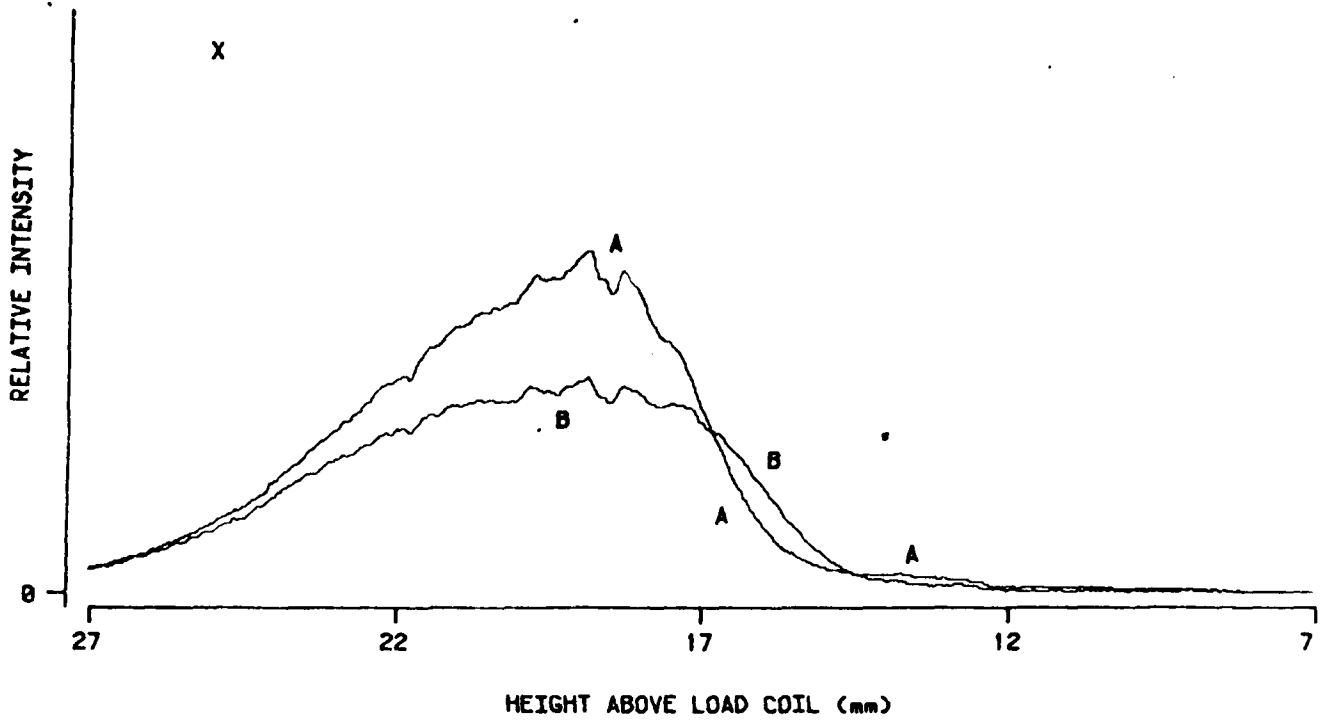




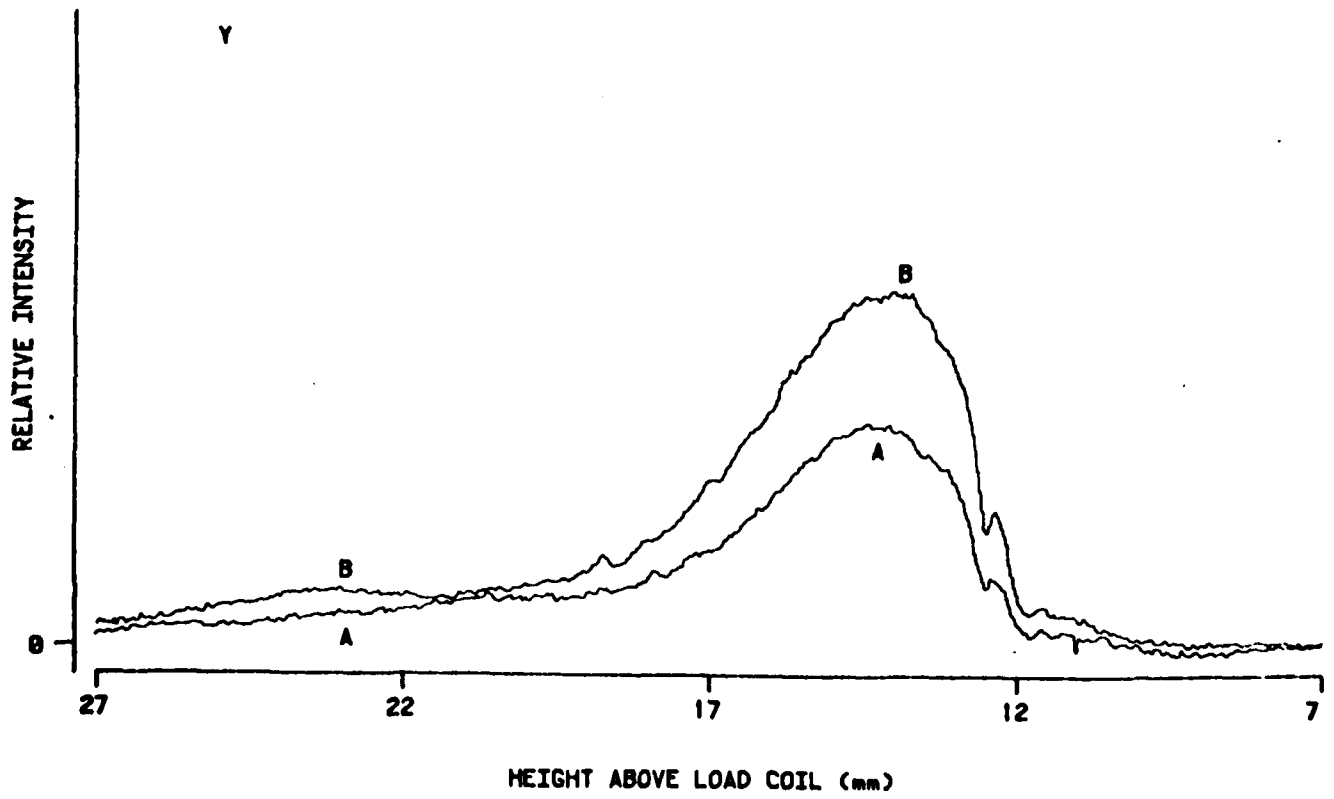
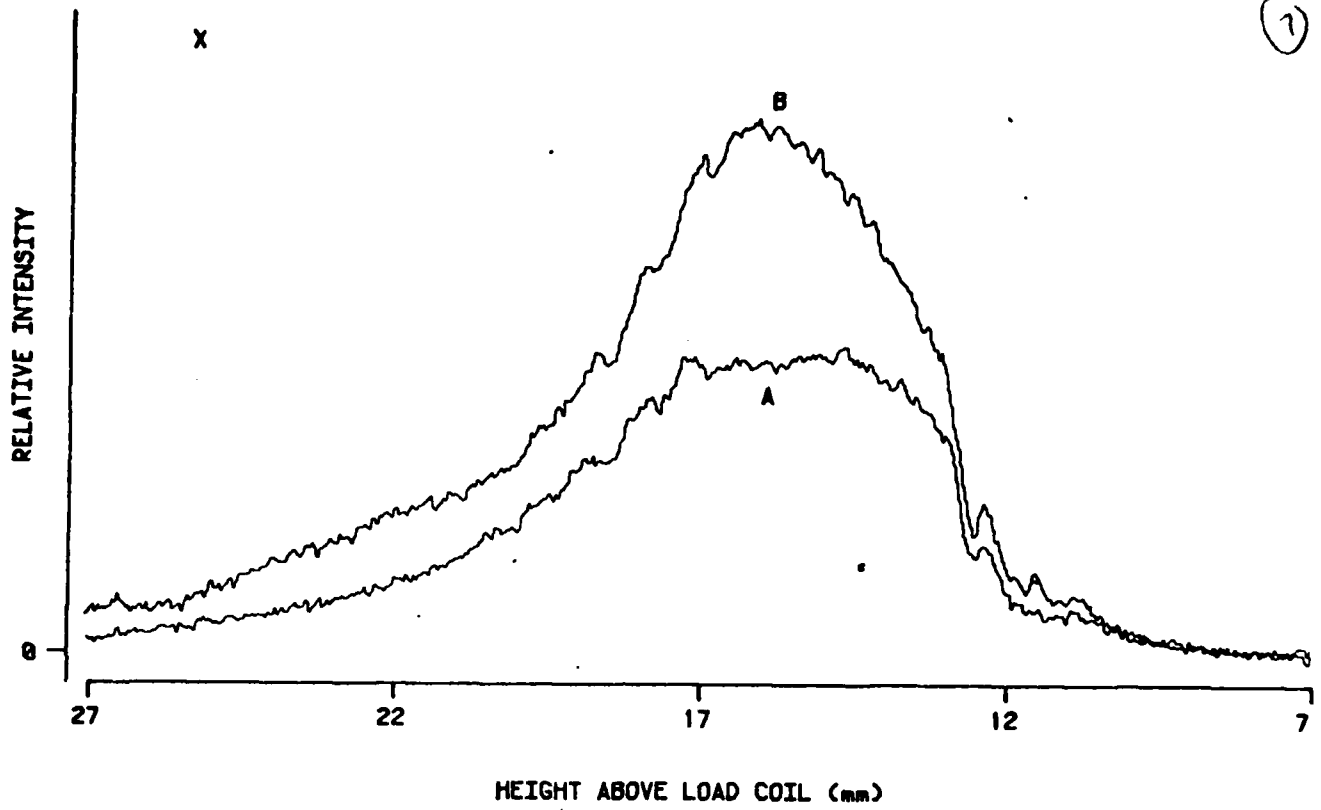
(5)

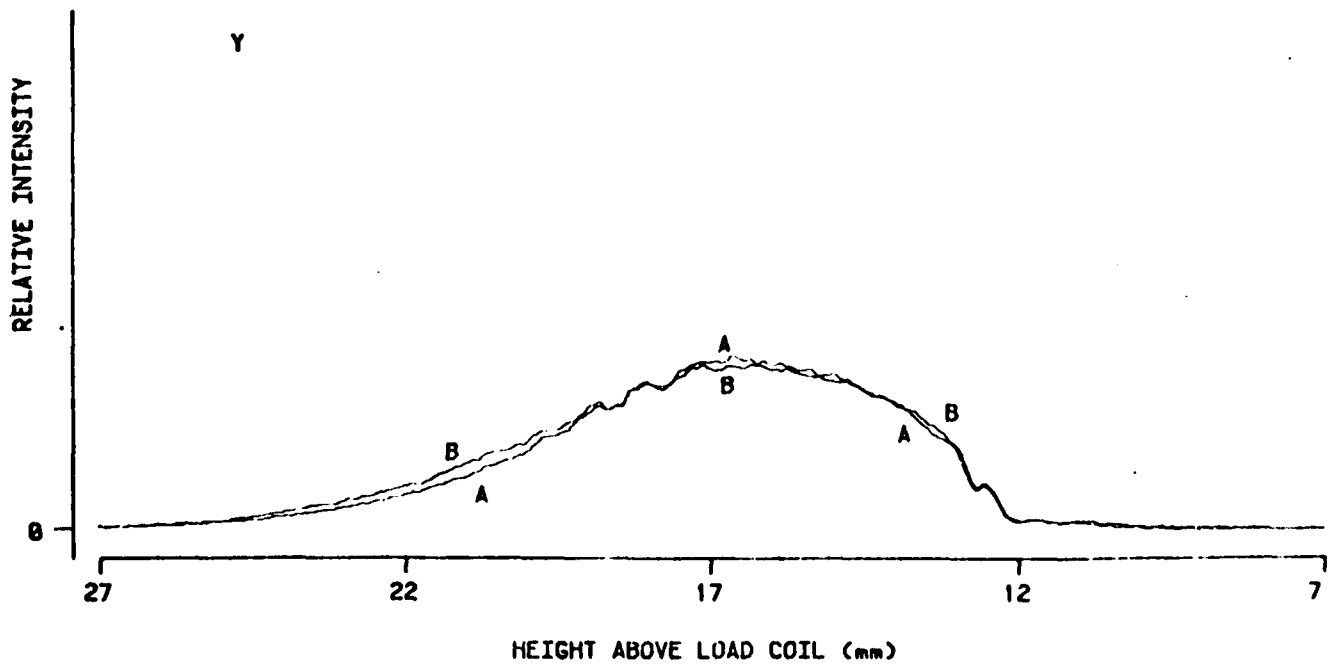
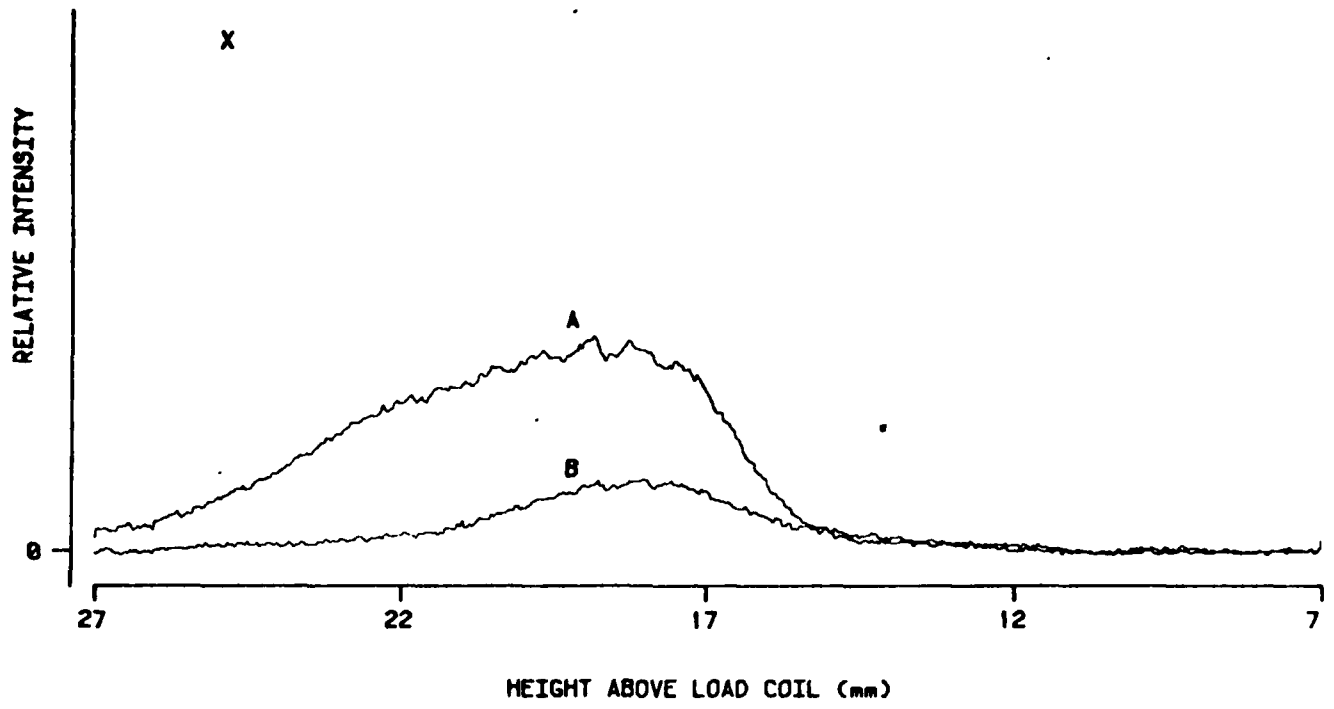






7





TECHNICAL REPORT DISTRIBUTION LIST, GEN

	<u>No. Copies</u>		<u>No. Copies</u>
Office of Naval Research Attn: Code 472 800 North Quincy Street Arlington, Virginia 22217	2	U.S. Army Research Office Attn: CRD-AA-IP P.O. Box 1211 Research Triangle Park, N.C. 27709	1
ONR Branch Office Attn: Dr. George Sandoz 536 S. Clark Street Chicago, Illinois 60605	1	Naval Ocean Systems Center Attn: Mr. Joe McCartney San Diego, California 92152	1
ONR Area Office Attn: Scientific Dept 715 Broadway New York, New York 10005	1	Naval Weapons Center Attn: Dr. A. B. Amster, Chemistry Division China Lake, California 93555	1
ONR Western Regional Office 1030 East Green Street Pasadena, California 91106	1	Naval Civil Engineering Laboratory Attn: Dr. R. W. Drisko Port Hueneme, California 93401	1
ONR Eastern/Central Regional Office Attn: Dr. L. H. Peebles Building 114, Section D 666 Summer Street Boston, Massachusetts 02210	1	Department of Physics & Chemistry Naval Postgraduate School Monterey, California 93940	1
Director, Naval Research Laboratory Attn: Code 6100 Washington, D.C. 20390	1	Dr. A. L. Slafkosky Scientific Advisor Commandant of the Marine Corps (Code RD-1) Washington, D.C. 20380	1
The Assistant Secretary of the Navy (REAS) Department of the Navy Room 4E736, Pentagon Washington, D.C. 20350	1	Office of Naval Research Attn: Dr. Richard S. Miller 800 N. Quincy Street Arlington, Virginia 22217	1
Commander, Naval Air Systems Command Attn: Code 310C (H. Rosenwasser) Department of the Navy Washington, D.C. 20360	1	Naval Ship Research and Development Center Attn: Dr. G. Bosmajian, Applied Chemistry Division Annapolis, Maryland 21401	1
Defense Technical Information Center Building 5, Cameron Station Alexandria, Virginia 22314	12	Naval Ocean Systems Center Attn: Dr. S. Yamamoto, Marine Sciences Division San Diego, California 92132	1
Dr. Fred Sealfield Chemistry Division, Code 6100 Naval Research Laboratory Washington, D.C. 20375	1	Mr. John Boyle Materials Branch Naval Ship Engineering Center Philadelphia, Pennsylvania 19112	1

TECHNICAL REPORT DISTRIBUTION LIST, 051C

	<u>No.</u> <u>Copies</u>		<u>No.</u> <u>Copies</u>
Dr. M. B. Denton Department of Chemistry University of Arizona Tucson, Arizona 85721	1	Dr. John Duffin United States Naval Postgraduate School Monterey, California 93940	1
Dr. R. A. Osteryoung Department of Chemistry State University of New York at Buffalo Buffalo, New York 14214	1	Dr. G. M. Hieftje Department of Chemistry Indiana University Bloomington, Indiana 47401	1
Dr. B. R. Kowalski Department of Chemistry University of Washington Seattle, Washington 98105	1	Dr. Victor L. Rehn Naval Weapons Center Code 3813 China Lake, California 93555	1
Dr. S. P. Ferone Department of Chemistry Purdue University Lafayette, Indiana 47907	1	Dr. Christie G. Enke Michigan State University Department of Chemistry East Lansing, Michigan 48824	1
Dr. D. L. Venezky Naval Research Laboratory Code 6130 Washington, D.C. 20375	1	Dr. Kent Eisentraut, NBT Air Force Materials Laboratory Wright-Patterson AFB, Ohio 45433	1
Dr. H. Freiser Department of Chemistry University of Arizona Tucson, Arizona 85721		Walter G. Cox, Code 3632 Naval Underwater Systems Center Building 148 Newport, Rhode Island 02840	1
Dr. Fred Saffold Naval Research Laboratory Code 6110 Washington, D.C. 20375	1	Professor Isaiah M. Warner Texas A&M University Department of Chemistry College Station, Texas 77840	1
Dr. H. Chernoff Department of Mathematics Massachusetts Institute of Technology Cambridge, Massachusetts 02139	1	Professor George H. Morrison Cornell University Department of Chemistry Ithaca, New York 14853	1
Dr. E. Wilson Department of Chemistry University of California, San Diego La Jolla, California	1	Dr. Rudolph J. Marcus Office of Naval Research Scientific Liaison Group American Embassy APO San Francisco 96303	1
Dr. A. Zirino Naval Undersea Center San Diego, California 92132	1	Mr. James Kelley DTNSRDC Code 2803 Annapolis, Maryland 21402	1