

AFOSR-TR- 80-0570 ✓

Department of Mathematics,
Computer Science and Statistics
The University of South Carolina
Columbia, South Carolina 29208

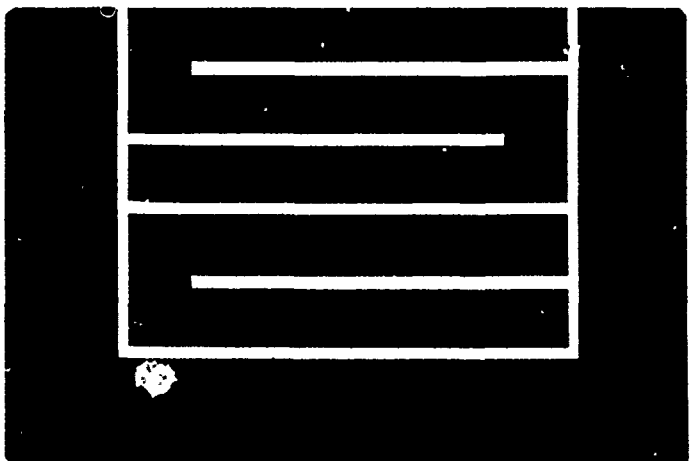
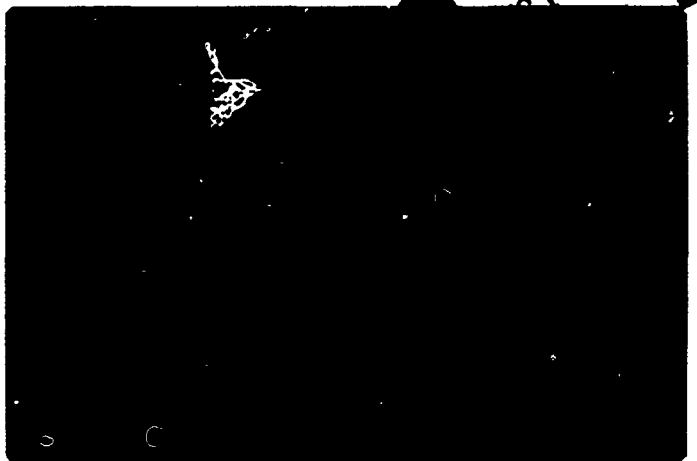
LEVEL *II*

5
13.S

See 1473

AD A088330

DTIC
ELECTE
8 1980



5

On the Almost Sure Convergence of Weighted
Sums of Random Elements in $D[0,1]$

by

R. L. Taylor^{1,2} and C. A. Calhoun²

University of South Carolina

Statistics Technical Report No. 56 ✓
60B12

June, 1980

✓ Department of Mathematics, Computer Science and Statistics
University of South Carolina
Columbia, South Carolina 29208

AIR FORCE OFFICE OF SCIENTIFIC RESEARCH (AFSC)
NOTICE OF TRANSMITTAL TO DDC
This technical report has been reviewed and is
approved for release IAW AFR 190-12 (7b).
Distribution is unlimited.
A. D. FLOSS
Technical Information Officer

DTIC
ELECTE
AUG 1 & 1980
S
C

¹ Research supported in part by the Air Force Office of Scientific Research
under Contract number F49620-79-C-0140, and by the
² Research and Productive Scholarship Fund of the University of South Carolina.

80 8 14 099

ABSTRACT

Let $\{w_n\}$ be a sequence of positive constants and $W_n = w_1 + \dots + w_n$ where $W_n \rightarrow \infty$ and $\frac{W_n}{w_n} \rightarrow \infty$. Let $\{X_n\}$ be a sequence of independent random elements in $D[0,1]$. The almost sure convergence of $\frac{1}{W_n} \sum_{k=1}^n w_k X_k$ is established under certain integral conditions and growth conditions on the weights $\{w_n\}$. The results are shown to be substantially stronger than the weighted sums convergence results of Taylor and Daffer (1979) and the strong laws of large numbers of Ranga Rao (1963) and Daffer and Taylor (1979).

KEY WORDS AND PHRASES. Weighted Sums, Random Elements in $D[0,1]$, Strong Laws of Large Numbers, Integral Conditions, and Almost Sure Convergence.

AMS (1979) CLASSIFICATION CODE. Primary 60B12; Secondary 60F15.

Accession For	
NTIS GPO&I	
DDC TAB	
Unannounced Justification	
By	
Distribution/	
Availability Codes	
Avail and/or special	
Dist	A

1. INTRODUCTION.

The convergence of weighted sums of random elements in $D[0,1]$ was obtained by Taylor and Daffer (1979) using a number of conditions such as convex tightness, moment conditions, and others. In this paper both the moment conditions and the tightness conditions are substantially relaxed in obtaining the almost sure convergence of weighted sums of random elements in $D[0,1]$. In addition, a brief discussion of the necessary integral conditions will be included which will delineate these results and previous work.

Let $D[0,1](= D)$ denote the space of real-valued functions on $[0,1]$ which are right continuous and possess left-hand limits for each $t \in [0,1]$. Let the linear space D be equipped with the topology generated by the Skorohod metric d and let $\| \cdot \|_{\infty}$ denote the uniform norm, $\| x \|_{\infty} = \sup_{t \in [0,1]} |x(t)|$ for $x \in D$. Next, let (Ω, A, P) denote a probability space. A random element X in D is a function $X: \Omega \rightarrow D$ which is measurable with respect to the Borel sets of the Skorohod topology. Random elements in D are characterized by the property that $X(t)$ is a random variable for each $t \in [0,1]$. The expected value $EX \in D$ can be defined pointwise by $(EX)(t) = E(X(t))$ for each $t \in [0,1]$ when $E\| X \|_{\infty} < \infty$. Detailed geometric and probabilistic properties of the space D with the uniform norm and the Skorohod metric can be found in Billingsley (1968), pp. 109-153 and Taylor (1978), pp. 153-184.

2. INTEGRAL CONDITIONS.

In obtaining the strong law of large numbers for independent, identically distributed random elements in D , Ranga Rao (1963) used the following crucial lemma.

LEMMA 1. If X is a random element in D with $E\| X \|_{\infty} < \infty$, then for each $\epsilon > 0$ there exists a partition $0 = t_0 < t_1 < \dots < t_m = 1$ of $[0,1]$ such that

$$\max_{1 \leq i \leq m} \sup_{t_{i-1} \leq t, s < t_i} E|X(t) - X(s)| \leq \epsilon. \quad (2.1)$$

In extending inequality (2.1) to a sequence of random elements and in trying to obtain strong laws of large numbers for non-identically distributed random elements, the following formulation of integral properties were motivated.

DEFINITION. A sequence of random elements $\{X_n\}$ in D is said to satisfy

(a) property (RR) if for each $\epsilon > 0$ there exists a partition

$0 = t_0 < t_1 < \dots < t_m = 1$ of $[0,1]$ such that

$$\sup_n \max_{0 \leq i \leq m-1} \sup_{t_i \leq t < t_{i+1}} E|X_n(t) - X_n(t_i)| \leq \epsilon. \quad (2.2)$$

(b) property (mT) if for each $\epsilon > 0$ there exists a partition

$0 = t_0 < t_1 < \dots < t_m = 1$ of $[0,1]$ such that

$$\sup_n \max_{0 \leq i \leq m-1} E \left[\sup_{t_i \leq t < t_{i+1}} |X_n(t) - X_n(t_i)| \right] \leq \epsilon. \quad (2.3)$$

(c) property (T) if for each $\epsilon > 0$ there exists a (Skorohod) compact set K such that

$$\sup_n E \left\| X_n \mathbb{1}_{\{X_n \notin K\}} \right\|_{\omega} < \epsilon. \quad (2.4)$$

Clearly, property (mT) implies property (RR). Also, identically distributed random elements $\{X_n\}$ with $E \|X_1\| < \infty$ satisfy (RR) obviously and satisfy (mT) by Lemma 2 since (T) follows from the tightness of identical distributions.

LEMMA 2. If $\{X_n\}$ satisfies property (RR) and property (T), then $\{X_n\}$

satisfies property (MT).

PROOF. Let $\epsilon > 0$ be given. Choose K (Skorohod) compact such that

$$\sup_n E \|X_n | X_n \notin K\|_{\infty} \leq \frac{\epsilon}{6}. \quad (2.5)$$

Since K is compact, there exists $\delta > 0$ such that

$$|x(t) - x(s)| = |x(u-0) - x(s)| + \frac{\epsilon}{3} \quad (2.6)$$

for each $x \in K$ whenever $0 \leq s \leq t < u < s + \delta$.

By (RR) choose a partition $\{t_1, \dots, t_m\}$ of $[0, 1]$ such that

$$\sup_n \max_{0 \leq i \leq m-1} \sup_{t_i \leq t < t_{i+1}} E |X_n(t) - X_n(t_i)| \leq \frac{\epsilon}{3}, \quad (2.7)$$

and without loss of generality it can be assumed that $t_{i+1} - t_i < \delta$ for all $i = 0, 1, \dots, m-1$. Note that from (2.7)

$$\sup_n \max_i \sup_{t_i \leq t < t_{i+1}} E [|X_n(t) - X_n(t_i)| I_{[X_n \in K]}] \leq \frac{\epsilon}{3}, \quad (2.8)$$

and by the bounded convergence theorem $(|X_n(t) - X_n(t_i)| I_{[X_n \in K]}) \leq 2 \sup_{x \in K} \|x\|_{\infty}$

$$\sup_n \max_i E [|X_n(t_{i+1} - 0) - X_n(t_i)| I_{[X_n \in K]}] \leq \frac{\epsilon}{3}. \quad (2.9)$$

Thus, from (2.6) and (2.5)

$$\begin{aligned} & \sup_n \max_i E \left[\sup_{t_i \leq t < t_{i+1}} |X_n(t) - X_n(t_i)| \right] \\ & \leq \sup_n \max_i E \left[\sup_{t_i \leq t < t_{i+1}} |X_n(t) - X_n(t_i)| I_{[X_n \in K]} \right] \\ & \quad + \sup_n \max_i E \left[\sup_{t_i \leq t < t_{i+1}} |X_n(t) - X_n(t_i)| I_{[X_n \notin K]} \right] \end{aligned}$$

$$\begin{aligned}
&\leq \sup_n \max_i E[(|X_n(t_{i+1}) - 0| - X_n(t_i)) + \frac{\epsilon}{3}) I_{\{X_n \in K\}}] \\
&\quad + \sup_n E[2 \|X_n\|_\infty I_{\{X_n \notin K\}}] \\
&\leq \sup_n \max_i E[|X_n(t_{i+1}) - 0| - X_n(t_i) | I_{\{X_n \in K\}}] + \frac{\epsilon}{3} P\{X_n \in K\} \\
&\quad + \frac{\epsilon}{3} \\
&\leq \frac{\epsilon}{3} + \frac{\epsilon}{3} + \frac{\epsilon}{3} = \epsilon
\end{aligned}$$

by (2.9)

///

Property (T) has been used in several laws of large numbers for random elements in Banach spaces to eliminate the assumption of identical distributions. In Banach spaces it could be assumed (wlog) that the compact set K in (2.4) was also convex. However, this assumption is not possible in D since the Skorohod topology is not locally convex. Moreover, the consideration of D with the uniform norm topology is much too restrictive on the functions which can be random elements. Thus, in obtaining laws of large numbers for D , Daffer and Taylor (1979) required convex tightness or that the (Skorohod) compact set in (2.4) also be convex. In particular, the previous convex tightness condition can be partially formulated by the integral condition

$$\sup_n E[\max_i \sup_{t_i \leq t < t_{i+1}} |X_n(t) - X_n(t_i)|] \leq \epsilon. \quad (2.10)$$

Property (mT) is clearly much more general than (2.10), and convergence results in the next section using property (mT) are a marked improvement over the results of Taylor and Daffer (1979) and include the results for identical distributions.

3. ALMOST SURE CONVERGENCE.

Let $\{w_k\}$ denote a sequence of positive constants. Define $W_n = w_1 + \dots + w_n$, $S_n = \sum_{k=1}^n w_k X_k$, and $N(x) = \text{card}\{n: \frac{W_n}{w_n} \leq x\}$. Random variable $\{Y_n\}$ are said to have uniformly bounded tail probabilities if there exists a nonnegative real-valued random variable X such that $P\{|X_n| > t\} < P\{X > t\}$ for each n and for all $t \in \mathbb{R}$. This property is denoted by $\{Y_n\} \ll X$. The following real-valued result can be obtained from the geometric Banach space results of Howell, Taylor and Woyczynski (preprint) and will be used in establishing the almost sure convergence of weighted sums of random elements in D .

THEOREM 1. Let $\{X_n\}$ be independent (real-valued) random variables such that $\{X_n\} \ll X$, $EX < \infty$, and for some $1 \leq p \leq 2$

$$\int_0^\infty t^{p-1} P\{|X| > t\} \int_t^\infty \frac{N(y)}{y^{p+1}} dy dt < \infty.$$

If $W_n \rightarrow \infty$, then

$$\frac{S_n}{W_n} - c_n \rightarrow 0 \quad \text{a.s.}$$

where

$$c_n = \frac{\sum_{k=1}^n w_k E(X_k \cdot I_{\{|X_k| \leq \frac{w_k}{w_n}\}})}{W_n}$$

REMARK. If $\frac{W_n}{w_n} \rightarrow \infty$, $EX < \infty$, and $EX_1 = EX_n$ for all n , then

$$\frac{S_n}{W_n} - EX_1 \rightarrow 0 \quad \text{a.s.}$$

since

$$\begin{aligned}
|EX_1 - EY_n| &\leq E|X_n - Y_n| = \int_{\frac{w_n}{w_n}}^{\infty} t d P[|X_n| \leq t] dt \\
&= - \int_{\frac{w_n}{w_n}}^{\infty} t d P[|X_n| > t] \leq \frac{w_n}{w_n} P[X > \frac{w_n}{w_n}] + \int_{\frac{w_n}{w_n}}^{\infty} P[X > t] dt \\
&\rightarrow 0 \text{ as } n \rightarrow \infty.
\end{aligned}$$

THEOREM 2. Let $\{X_n\}$ be independent random elements in D such that
(i) property (mT) is satisfied, (ii) $\{\|X_n\|\} \in X$ and $EN(X) < \infty$,
(iii) $EX_n = EX_1$ for all n , and (iv) for some $1 < p \leq 2$

$$\int_0^{\infty} t^{p-1} P[X > t] \int_t^{\infty} \frac{N(y)}{y^{p+1}} dy dt < \infty. \quad (3.1)$$

If $W_n \rightarrow \infty$ and $\frac{w_n}{w_n} \rightarrow \infty$, then

$$\left\| \frac{S_n}{W_n} - EX_1 \right\|_{\infty} \rightarrow 0 \quad \text{a.s.}$$

PROOF. By property (mT) there exists a partition $0 = t_0 < t_1 < \dots < t_m = 1$ such that

$$\max_{0 \leq i \leq m-1} E \left[\sup_{t_i \leq t < t_{i+1}} |X_k(t) - X_k(t_i)| \right] \leq \epsilon \text{ for each } k. \quad (3.2)$$

For each n

$$\begin{aligned}
&\left\| \frac{1}{W_n} \sum_{k=1}^n w_k X_k - EX_1 \right\|_{\infty} \\
&\leq \max_{0 \leq i \leq m-1} \frac{1}{W_n} \sum_{k=1}^n w_k \sup_{t_i \leq t < t_{i+1}} |X_k(t) - X_k(t_i)|
\end{aligned}$$

$$\begin{aligned}
& + \max_{0 \leq i \leq m} \left| \frac{1}{W_m} \sum_{k=1}^n w_k X_k(t_i) - EX_1(t_i) \right| \\
& + \max_{0 \leq i \leq m-1} \sup_{t_i \leq t < t_{i+1}} |EX_1(t) - EX_1(t_i)|. \quad (3.3)
\end{aligned}$$

The last term in (3.3) is less than ϵ since

$$\sup_{t_i \leq t < t_{i+1}} |EX_1(t) - EX_1(t_i)| \leq E \sup_{t_i \leq t < t_{i+1}} |X_1(t) - X_1(t_i)|.$$

For each i $\{X_k(t_i)\} \prec X$, and Theorem 1 yields

$$\left| \frac{1}{W_n} \sum_{k=1}^n w_k X_k(t_i) - EX_1(t_i) \right| \rightarrow 0 \quad \text{a.s.} \quad (3.4)$$

for each i . Hence, the second term of (3.3) goes to 0 a.s. as $n \rightarrow \infty$.

For the first term of (3.3), define

$$Y_k^{(i)} = \sup_{t_i \leq t < t_{i+1}} |X_k(t) - X_k(t_i)| \quad \text{and} \quad Z_k^{(i)} = Y_k^{(i)} - EY_k^{(i)}.$$

For each i $\{Z_k^{(i)}\}$ are independent random variables with zero means and $\{Z_k^{(i)}\} \prec 2X$. Thus,

$$\frac{\sum_{k=1}^n w_k Z_k^{(i)}}{W_n} \rightarrow 0 \quad \text{a.s.}$$

By Theorem 1, for each $i = 0, 1, \dots, m-1$, or

$$\limsup_n \frac{\sum_{k=1}^n w_k Y_k^{(i)}}{W_n} < \limsup_n \frac{\sum_{k=1}^n w_k EY_k^{(i)}}{W_n} \leq \epsilon \quad (3.5)$$

a.s. for each i by property (mf). Hence,

$$\limsup_n \left\| \frac{1}{W_n} \sum_{k=1}^n w_k X_k - EX_1 \right\|_\infty \leq \epsilon \quad \text{a.s.}, \quad (3.6)$$

and the proof is completed by taking a sequence of ε 's going to zero and by excluding a countable union of null sets. ///

To obtain the traditional strong law of large numbers, let $w_k = 1$ for all k . Then, $N(y) = [y]$ (the greatest integer function), and condition (3.1) becomes

$$\begin{aligned} \int_0^\infty t^{p-1} P\{X > t\} \int_t^\infty \frac{N(y)}{y^{p+1}} dy dt \\ \doteq \int_0^\infty t^{p-1} P\{X > t\} \int_t^\infty \frac{y}{y^{p+1}} dy dt = \int_0^\infty P\{X > t\} dt \end{aligned}$$

for each $p > 1$. Thus, the following corollary is immediate.

COROLLARY 1. If $\{X_n\}$ is a sequence of independent random elements in D such that (i) property (mT) is satisfied, (ii) $\{X_n\} \ll X$ and $EX < \infty$, and (iii) $EX_n = EX_1$, then

$$\left\| \frac{1}{n} \sum_{k=1}^n X_k - EX_1 \right\| \rightarrow 0 \quad \text{a.s.}$$

It is easy to show that

$$\begin{aligned} \max_i E \left| \sup_{t_i \leq t < t_{i+1}} |X_n(t) - EX_n(t) - (X_n(t_i) - EX_n(t_i))| \right| \\ \leq 2 \max_i E \left| \sup_{t_i \leq t < t_{i+1}} |X_n(t) - X_n(t_i)| \right| \end{aligned}$$

and that $\{X_n - EX_n\}$ has property (mT) if $\{X_n\}$ has property (mT). Also, if for some $p > 1$, $E \|X_n\|^p \leq M$ for all n , then

$$P\{\|X_n\| > t\} \leq \frac{M}{t^p} = \int_t^\infty \frac{pM}{s^{p+1}} ds$$

will yield a random variable X such that $\{X_n\} \ll X$ and

$$EX = \int_{\frac{1}{M^p}}^{\infty} \frac{s^{pM}}{s^{p+1}} ds = pM \int_{\frac{1}{M^p}}^{\infty} \frac{1}{s} ds < \infty.$$

COROLLARY 2. If $\{X_n\}$ is a sequence of independent random elements in D such that (i) property (mT) holds and (ii) for some $p > 1$, $\sup_n E \|X_n\|^p < \infty$, then

$$\| \frac{1}{n} \sum_{k=1}^n X_k - EX_1 \| \dots \rightarrow 0 \quad \text{a.s.}$$

Corollary 2 represents a major improvement over Theorem 1 of Daffer and Taylor (1979) in that not only is convergence in the Skorohod topology replaced by convergence in the uniform norm but the restrictive condition of convex tightness is replaced by property (mT). Finally, since identically distributed random elements with a first absolute moment satisfy property (mT), the following more general form of the strong law of large numbers is available.

THEOREM 3. If $\{X_n\}$ are identically distributed random elements in D such that (i) EX_1 exists and $EN(\|X_1\|) < \infty$ and (ii) for some $1 \leq p \leq 2$

$$\int_0^{\infty} t^{p-1} P\{\|X_1\| > t\} dt < \infty,$$

then

$$\| \frac{1}{n} \sum_{k=1}^n X_k - EX_1 \| \rightarrow 0 \quad \text{a.s.}$$

ACKNOWLEDGEMENTS. The authors are grateful to Peter Z. Daffer for his discussions and help in the development of the integral conditions and their relationships.

REFERENCES

1. Billingsley, P. Convergence of Probability Measures, Wiley, New York, (1968).
2. Daffer, P. Z. and Taylor, R. L. Laws of large numbers for $D[0,1]$, Annals of Probability 7 (1979) 85-95.
3. Howell, J., Taylor, R. L., and Woyczynski, W. A. Stability of linear and quadratic forms in independent random variables in Banach spaces, (preprint).
4. Rao, R. R. The law of large numbers for $D[0,1]$ -valued random variables. Theory of Prob. and Appl. 8 (1963) 70-74.
5. Taylor, R. L. Stochastic Convergence of Weighted Sums of Random Elements in Linear Spaces. Lecture Notes in Mathematics, 672. Springer-Verlag, Berlin, 1978.
6. Taylor, R. L. and Daffer, P. Z. Convergence of Weighted Sums of Random Elements in $D[0,1]$, J. of Mult. Anal. 9 (1979).

REPORT DOCUMENTATION PAGE

READ INSTRUCTIONS
BEFORE COMPLETING FORM

1 REPORT NUMBER C Statistics Technical Report #56	2 GOVT ACCESSION NO. AD-A088330	3 RECIPIENT'S CATALOG NUMBER (19) TR-80-0570
4 TITLE (and Subtitle) (6) ON THE ALMOST SURE CONVERGENCE OF WEIGHTED SUMS OF RANDOM ELEMENTS IN $D[0,1]$		5. TYPE OF REPORT & PERIOD COVERED (9) Interim rept.
7 AUTHOR(s) (10) Robert Lee/Taylor C.A/Calhoun		6. PERFORMING ORG. REPORT NUMBER
9. PERFORMING ORGANIZATION NAME AND ADDRESS University of South Carolina Dept. of Mathematics, Computer Science, & Statistics Columbia, SC 29208		8. CONTRACT OR GRANT NUMBER(s) F49620-79-C-0010 (15) F49620-79-C-0140
11. CONTROLLING OFFICE NAME AND ADDRESS Air Force Office of Scientific Research/NM Bolling AFB, Washington, DC 20332		10. PROGRAM ELEMENT, PROJECT, TASK AREA & WORK UNIT NUMBERS (16) 61102F 2304/A5 (17) A5
14. MONITORING AGENCY NAME & ADDRESS (if different from Controlling Office) (14) TR-56 (12) 15		12. REPORT DATE
		13. NUMBER OF PAGES 11 (11) Jun 80
		15. SECURITY CLASS. (of this report) UNCLASSIFIED
		15a. DECLASSIFICATION/DOWNGRADING SCHEDULE

16. DISTRIBUTION STATEMENT (of this Report)

Approved for public release; distribution unlimited

17. DISTRIBUTION STATEMENT (of the abstract entered in Block 20, if different from Report)

18. SUPPLEMENTARY NOTES

19. KEY WORDS (Continue on reverse side if necessary and identify by block number)

Weighted Sums, Random Elements in $D[0,1]$, Strong Laws of Large Numbers, Integral Conditions, and Almost Sure Convergence.

20. ABSTRACT (Continue on reverse side if necessary and identify by block number)

Let $\{w_n\}$ be a sequence of positive constants and $W_n = w_1 + \dots + w_n$ where $W_n \rightarrow \infty$ and $\frac{w_n}{W_n} \rightarrow 0$. Let $\{X_n\}$ be a sequence of independent random elements in $D[0,1]$. The almost sure convergence of $\frac{1}{W_n} \sum_{k=1}^n w_k X_k$ is established under certain integral conditions and growth conditions on the weights $\{w_n\}$. The

410442 JWA

20. ABSTRACT (cont.)

results are shown to be substantially stronger than the weighted sums convergence results of Taylor and Daffer (1979) and the strong laws of large numbers of Ranga Rao (1963) and Daffer and Taylor (1979).