

AD-A073 221

COLORADO UNIV DENVER MEDICAL CENTER

F/G 6/19

VENTILATORY ACCLIMATIZATION TO HIGH ALTITUDE IS PREVENTED BY CO--ETC(U)

JUL 79 J C CRUZ, J T REEVES, R F GROVER

PHS-HL-14985

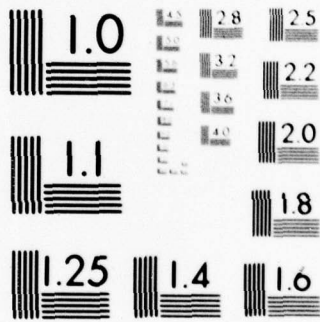
UNCLASSIFIED

USARIEM-M-20/79

NL

| OF |  
AD  
A073221





MICROCOPY RESOLUTION TEST CHART  
 NATIONAL BUREAU OF STANDARDS-1963-A

unclassified

SECURITY CLASSIFICATION OF THIS PAGE (When Data Entered)

REPORT DOCUMENTATION PAGE

READ INSTRUCTIONS BEFORE COMPLETING FORM

1. REPORT NUMBER M 20/79 (6) 2. GOVT ACCESSION NO. 3. RECIPIENT'S CATALOG NUMBER

4. TITLE (and Subtitle) Ventilatory Acclimatization to High Altitude is Prevented by CO2 Breathing (11) 5. TYPE OF REPORT & PERIOD COVERED

6. PERFORMING ORG. REPORT NUMBER

7. AUTHOR(s) (10) J. C. Cruz\*, J. T. Reeves, R. F. Grover, J. T. Maher, R. E. McCullough, J. C. Denniston 8. CONTRACT OR GRANT NUMBER(s) (15) PHS-HL-24985

9. PERFORMING ORGANIZATION NAME AND ADDRESS US Army Research Institute of Environmental Medicine, Natick, MA 01760 10. PROGRAM ELEMENT, PROJECT, TASK AREA & WORK UNIT NUMBERS (16) 3E162777A845 94183051

11. CONTROLLING OFFICE NAME AND ADDRESS US Army Medical Research & Development Command Fort Detrick Frederick, MD 21701 12. REPORT DATE (17) 16 Jul 1979 13. NUMBER OF PAGES 23

14. MONITORING AGENCY NAME & ADDRESS (if different from Controlling Office) Same as above 15. SECURITY CLASS. (of this report) unclassified

LEVEL

16. DISTRIBUTION STATEMENT (of this report) Distribution of this document is unlimited. (12) 29 p

DDIC RECEIVED AUG 29 1979

17. DISTRIBUTION STATEMENT (of the abstract entered in Block 20, if different from Report) N/A (18) USARLEM (19) M-20/79

18. SUPPLEMENTARY NOTES \*Dr. J. C. Cruz's Present Address: Cardiovascular Pulmonary Research Laboratory University of Colorado Medical Center Denver, CO 80262 088 500

19. KEY WORDS (Continue on reverse side if necessary and identify by block number) high altitude, ventilation, hypoxia, hypocapnia, ventilatory control 79 08 24 064

20. ABSTRACT (Continue on reverse side if necessary and identify by block number) The hypoxia of high altitude stimulates ventilation. If the resultant respiratory alkalosis inhibits the initial increase in ventilation, then with prevention of alkalosis, ventilation should rise immediately to a stable plateau. Four subjects inspired CO2 (3.77%) from ambient air in a hypobaric chamber (Pb = 440-455 torr) during 100 hours at high altitude. Ventilation (for given oxygen uptakes at rest and during exercise) increased promptly and remained stable. Four control subjects exposed to high altitude without CO2 supplementation showed the expected progressive increases

ADA 073221

DDC FILE COPY

unclassified

SECURITY CLASSIFICATION OF THIS PAGE(When Data Entered)

in ventilation with time. The hyperoxic CO<sub>2</sub> ventilatory response curve shifted progressively to the left with time in the control subjects but not in those given supplemental CO<sub>2</sub>. The latter group also failed to increase the ventilatory response to isocapnic hypoxia. Thus, CO<sub>2</sub> supplementation at high altitude prevented the so called "ventilatory acclimatization" from occurring. Prevention of respiratory alkalosis at high altitude probably permitted maintenance of [H<sup>+</sup>] at some central nervous system locus; thus allowing an uninhibited hypoxic stimulation of ventilation.

<b>Accession For</b>	
NTIS GRA&I	<input checked="" type="checkbox"/>
DDC TAB	<input type="checkbox"/>
Unannounced	<input type="checkbox"/>
Justification	
By _____	
Distribution/ _____	
Availability Codes	
Dist	Avail and/or special
A	

unclassified

SECURITY CLASSIFICATION OF THIS PAGE(When Data Entered)

VENTILATORY ACCLIMATIZATION TO HIGH ALTITUDE  
IS PREVENTED BY CO<sub>2</sub> BREATHING

J. C. Cruz, J. T. Reeves, R. F. Grover, J. T. Maher, R. E.  
McCullough, A. Cymerman and J. C. Denniston

Running Head: Alkalosis in Ventilatory Adjustments to  
High Altitude

Index Words: High altitude, ventilation, hypoxia,  
hypocapnia, ventilatory control

Cardiovascular Pulmonary Research Laboratory  
University of Colorado Medical Center  
Denver, CO 80262

and

United States Army Research Institute of  
Environmental Medicine  
Natick, MA 01760

Supported by NIH Grant No. HL 14985 and USARIEM

AA A 073221

DDC FILE COPY

ABSTRACT

△ The hypoxia of high altitude stimulates ventilation. If the resultant respiratory alkalosis inhibits the initial increase in ventilation, then with prevention of alkalosis, ventilation should rise immediately to a stable plateau. Four subjects inspired CO<sub>2</sub> (3.77%) from ambient air in a hypobaric chamber ( $P_{\text{sub B}} = 440-455$  torr) during 100 hours at high altitude. Ventilation (for given oxygen uptakes at rest and during exercise) increased promptly and remained stable. Four control subjects exposed to high altitude without CO<sub>2</sub> supplementation showed the expected progressive increases in ventilation with time. The hyperoxic CO<sub>2</sub> ventilatory response curve shifted progressively to the left with time in the control subjects but not in those given supplemental CO<sub>2</sub>. The latter group also failed to increase the ventilatory response to isocapnic hypoxia. Thus, CO<sub>2</sub> supplementation at high altitude prevented the so called "ventilatory acclimatization" from occurring. Prevention of respiratory alkalosis at high altitude probably permitted maintenance of (H<sup>+</sup>) at some central nervous system locus, thus allowing an uninhibited hypoxic stimulation of ventilation.

i

## INTRODUCTION

Ventilatory acclimatization to high altitude is considered to be a progressive decrease with time in arterial  $\text{CO}_2$  tension ( $\text{PaCO}_2$ ), i.e. a progressive increase in alveolar ventilation (Kellogg, 1963, 1977). A progressive left shift of the curve that relates ventilation- $\text{PaCO}_2$  under hyperoxic conditions is also used to quantitate ventilatory acclimatization to high altitude (Mines and Sorensen, 1970).

When man goes to high altitude, several days are required to effect the full increase in ventilation, probably because the initial uncompensated respiratory alkalosis inhibits the hypoxic stimulation of ventilation (Eger et al., 1968; Kellogg, 1953, 1964, 1977; Kellogg et al., 1957). We reasoned that prevention of respiratory alkalosis by giving  $\text{CO}_2$  to breathe during several days at high altitude should permit the ventilation to rise promptly to a relatively stable plateau. Eger et al. (1968) have shown that the administration of supplemental  $\text{CO}_2$  during eight hours of hypoxia reduced almost to 50% a shift in the  $\text{CO}_2$  ventilatory response curve. The utilization of  $\text{CO}_2$  supplementation to prevent respiratory alkalosis during several days at high altitude has not previously been reported.

The purpose of the present study was to prevent respiratory alkalosis by  $\text{CO}_2$  supplementation at high altitude and to test the hypothesis that the hypoxic stimulus to ventilation would thereby be unopposed. We planned to measure ventilation at rest and during exercise in relation to oxygen uptake, as well as ventilatory responses to isocapnic hypoxia and hyperoxic  $\text{CO}_2$  stimulation. Potentially, such a study would be complicated by the fact that exposure to a given altitude would not provide the same degree of hypoxemia for hypocapnic and normocapnic subjects because of the "altitude

179 08 24 064

lowering" effect of CO<sub>2</sub> (McFarland and Dill, 1938; Rahn and Otis, 1947). Therefore, it was decided to pursue the study by exposing two groups of volunteers to equivalent degrees of alveolar hypoxia irrespective of altitude. We would attempt to maintain normocapnia in one group and allow the other to become hypocapnic. Although technical and theoretical difficulties were anticipated, the experiment seemed worthwhile in separating the hypoxic stimulation of ventilation from the inhibition of ventilatory stimuli by respiratory alkalosis.

#### METHODS

##### General Plan and Description of Subjects

Of the ten subjects participating in this study, seven were volunteer enlisted men from the United States Army Test Subject Platoon at the United States Army Research Institute of Environmental Medicine (USARIEM) at Natick, Mass. and three were members of the Special Forces. They varied in age from 18 to 22 years (mean 20 years), in height from 140 to 188 cm (mean 177 cm), in weight from 61.4 to 112.3 kg (mean 75.8 kg), and in surface area from 1.76 to 2.35 m<sup>2</sup> (mean 2.19 m<sup>2</sup>). The subjects were divided into two groups of five, such that they had similar mean body weights and similar values of maximum oxygen uptake per kg of body weight. The aim for the first group of subjects (CO<sub>2</sub> group) during 100 hours at simulated high altitude was to maintain normocapnia at rest while the alveolar oxygen tension fell to a level between 55 and 60 mm Hg. The second group, designated as the group without CO<sub>2</sub>, was to be exposed without CO<sub>2</sub> addition to an altitude which would match the alveolar oxygen tension in the CO<sub>2</sub> group. One subject in the group without CO<sub>2</sub> voluntarily withdrew from the study after 24 hours in the altitude chamber. Satisfactory ventilatory measurements



could not be obtained in one subject of the CO<sub>2</sub> group. Therefore, four subjects for each group are reported. Informed consent was obtained. The subjects cheerfully tolerated the rather prolonged confinement and were cooperative in every way. No ill effects attributable to the study were observed.

#### Conduct of the Experiment

The experiment was conducted in the hypobaric environmental chamber of the USARIEM. During the first two weeks the studies were carried out with the door of the chamber open to ambient sea level pressure, during which time the subjects were familiarized with the equipment and the experimental procedures. Morning control measurements were made of resting minute ventilation and end tidal O<sub>2</sub> and CO<sub>2</sub> gas tensions, followed by ventilatory response to hypoxia and hypercapnia. Oxygen uptake, minute ventilation and heart rate were measured at rest and during five minutes of upright bicycle exercise in the afternoon. The subjects exercised at 300 kilogram-meters per minute (kg-m/min) for five minutes and then, without rest, at 600 kg-m/min for a further five minutes.

At 7:00 AM, beginning the third week, the men in the CO<sub>2</sub> group entered the chamber which had been evacuated to a pressure of 465 mm Hg (altitude equivalent to approximately 4100 m). On arrival at high altitude and each morning thereafter up to 75 hours as specified in Table 1, seated subjects had measurements of end tidal O<sub>2</sub> and CO<sub>2</sub> tensions and ventilatory responses to isocapnic hypoxia and hypercapnia. The ambient carbon dioxide concentration of  $3.77 \pm 0.02\%$  (SEM) was then maintained throughout the altitude study. The ambient temperature was 20° C and the relative humidity was maintained at 35%. After the measurements at 27 hours of exposure the

alveolar oxygen tensions were higher than the desired range and the pressure within the chamber was lowered to 440 mm Hg (altitude approximately 4600 m). In the afternoons at the times specified in Table 2, measurements of oxygen uptake, ventilation and heart rate were made with the subjects at sitting, rest, and during bicycle exercise at 300 and 600 kg-m/min. After the measurements had been concluded on the last day the subjects were dismissed.

At 7:00 AM, beginning the fourth week, the group without CO<sub>2</sub> entered the chamber at a barometric pressure of 492 mm Hg (altitude approximately 3600 m). No CO<sub>2</sub> was added. The temperature was 20° C and the relative humidity was 35%. Because the alveolar oxygen tension tended to rise with time due to the so called "ventilatory acclimatization to high altitude" the pressure within the chamber was lowered to 475 mm Hg after 55 hours. The schedule of measurements within the chamber was the same as with the CO<sub>2</sub> group.

#### Measurements

The instruments utilized for ventilatory measurements consisted of NOVA 1200 computer (Data General Corporation), an oxygen fuel cell (Weil et al., 1967), an infrared CO<sub>2</sub> analyzer (Beckman, model LB-1), a thermocouple anemometer for expired air flow velocity measurements (Technology Incorporated, model MFG-20H), a high velocity valve (Hans Rudolph) and, on the expired limb, a 5-liter mixing chamber with an internal electric fan to insure adequate mixing. For measurement of oxygen uptake the oxygen and CO<sub>2</sub> analyzers sampled the air in the mixing chamber and the anemometer measured the expired air velocity. The outputs from the analyzers plus that from the anemometer were fed into the computer which printed out

the ventilation, gas concentrations and calculated  $O_2$  uptake as averaged values for successive 30-second intervals. Prior to measurements in each subject the oxygen and  $CO_2$  analyzers were calibrated from gas tanks of known composition and inspired air was analyzed for oxygen and  $CO_2$ . At each altitude, and usually for each subject, the expired volume measured by the anemometer and computer was compared to that simultaneously collected in a Douglas bag measured with a Tissot spirometer. Analysis of the expired air within the bag allowed for frequent checks of the validity of oxygen uptake by the computer system. Alveolar air analysis was obtained by constantly withdrawing air from the dead space of the Rudolph valve at 100 ml/min through the  $O_2$  and  $CO_2$  analyzers. Ventilatory responsiveness to progressive isocapnic hypoxia was made following the technique of Weil et al. (1970). Ventilation was measured continuously over a period of 8 to 10 minutes as the alveolar  $PO_2$  fell from 130 to 40 torr. Alveolar  $PCO_2$  was held constant at the resting levels by adding  $CO_2$  to the inspired gas. The magnitude of the response to hypoxia was judged by the parameter A, which describes the shape of the hyperbolic relationship of ventilation and  $PAO_2$  (Weil et al., 1970). The ventilatory responsiveness to progressive hypercapnia under normoxic conditions ( $PAO_2$  approximately 120 torr) was measured by the rebreathing method of Read (1967). The magnitude of the response to hypercapnia was judged by the slope (S) of the line relating ventilation to  $PA_{CO_2}$ . The intercept of the line extrapolated to 0 ventilation, the parameter B of Lloyd et al. (1958) was used to measure the shift of the line.

#### Statistical Analysis

Group differences were measured with a t-test and changes within a group were measured by an analysis of variance. Mean differences with a probability of 0.05 or less were considered significant.

### Facilities

The altitude chamber consisted of two rooms connected by an air lock. One room, 6.3 m x 3.0 m x 2.5 m, housed all scientific equipment and one bed. The other room, 3.7 m x 2.8 m x 2.5 m, was living space utilized by the subjects. These were connected by the air lock, 2.2 m x 2.8 m x 2.5 m, and were operated as a single unit except when the air lock was opened to allow entry or egress. The chamber operation, including observation of the subjects, was carried out by a three-man crew which changed every eight hours. In addition, an Army medical officer remained continuously on-call and in the building while the chamber was in operation.

### RESULTS

#### Alveolar PO<sub>2</sub> and PCO<sub>2</sub> at Rest at High Altitude, Table 1

The mean alveolar oxygen (P<sub>A</sub>O<sub>2</sub>) tensions at high altitude ranged from 55 to 62 mmHg in the CO<sub>2</sub> group and from 55 to 61 mmHg in the group without CO<sub>2</sub>. As intended, there were no significant differences in P<sub>A</sub>O<sub>2</sub> between the groups. In the CO<sub>2</sub> group at high altitude the alveolar CO<sub>2</sub> tensions were maintained slightly above the sea level value, preventing hypocapnia. In contrast, hypocapnia developed in the group without CO<sub>2</sub>.

#### Ventilation at Rest, Figure 1.

Resting ventilation measured in the morning showed a sharp increase in the CO<sub>2</sub> group at 3 h. of altitude exposure. No significant changes were observed thereafter. Analysis of variance showed that the four measurements carried out at high altitude were different from the sea level control. Subjects without CO<sub>2</sub> showed a progressive increase in ventilation with time. Differences in ventilation between the two groups were measured at 27 and 51 hours at high altitude (P<.05).

### Ventilation During Exercise, Table 2

In both groups the oxygen uptakes measured at high altitude tended to be higher than those at sea level. No significant differences were observed in oxygen uptake between the two groups either at sea level or at high altitude. Oxygen uptake for a given work load did not vary significantly with time of altitude exposure.

Ventilations were higher at altitude than at sea level in both groups during exercise. However, ventilation changes with time of altitude exposure were different between the two groups. A progressive increase was observed in the control group while no significant differences were measured in the CO<sub>2</sub> group.

### Ventilation at a Given Oxygen Uptake

It was necessary to examine the changes in ventilation without the interference of variations in oxygen uptake (for a given exercise load) at the various times. For the three metabolic levels examined the oxygen uptakes in Table 2 appeared to be near 500, 1000, and 1500 ml/min, for sitting rest and the two exercise stints, respectively. Therefore, the ventilation versus oxygen uptake was plotted for each subject on each day and values of ventilation were interpolated for oxygen uptakes at 500, 1000, and 1500 ml/min. The results shown graphically by work load (Fig. 2) indicated that the subjects with CO<sub>2</sub> supplementation had an abrupt increase in ventilation at high altitude, whereas those without CO<sub>2</sub> showed a progressive increase in ventilation throughout the altitude exposure.

### Control of Breathing, Figure 3

No significant changes in the ventilatory response to isocapnic hypoxia were measured in the CO<sub>2</sub> group. On the other hand, an increase was observed at 75 hours in the group without CO<sub>2</sub> (Fig. 3, top).

Analysis of variance revealed no changes with time in the slope(s) of the ventilatory response to hypercapnia at high altitude for either the CO<sub>2</sub> group or for the group without CO<sub>2</sub> (Fig. 3, middle). On the other hand, the intercept of the line that relates  $\dot{V}_E$  to P<sub>CO<sub>2</sub></sub> (intercept B) showed no change in the CO<sub>2</sub> group. However, a progressive shift to the left occurred in the group without CO<sub>2</sub>. The value at 75 hours at high altitude was different from the value at 3 hours (Fig. 3, bottom). There was a difference between the two groups during the last measurement at high altitude (P<.01).

#### DISCUSSION

The present study attempted to compare ventilatory adaptations in normal subjects who developed hypocapnia during several days at high altitude with those in whom the development of hypocapnia was prevented. To prevent hypocapnia we added CO<sub>2</sub> to the altitude chamber and analyzed the end tidal gas as a guide to CO<sub>2</sub> supplementation. Although hypocapnia was prevented, slight hypercapnia, relative to sea level, was produced during the first 51 hours of altitude exposure. By comparison, the group without CO<sub>2</sub> developed hypocapnia, such that differences between the groups were observed in end tidal CO<sub>2</sub> values. Arterial blood gases taken at the end of the altitude exposure and reported elsewhere (Grover et al., 1976), showed the same P<sub>CO<sub>2</sub></sub> trends as did the end tidal values, although the arterial values were lower, probably due to excitement. The difference in ventilatory adjustments to high altitude observed between the two groups are considered in terms of a) patterns of total ventilation, b) ventilatory responses to CO<sub>2</sub> stimulation, and c) ventilatory responses to isocapnic hypoxia.

#### a) Patterns of Total Ventilation

The ventilatory responses to high altitude differed between the groups. Subjects without CO<sub>2</sub> addition showed a progressive increase in ventilation with time of exposure, whereas subjects with CO<sub>2</sub> supplementation showed an initial rise in ventilation to a value which remained essentially unchanged for the remainder of the altitude stay. The differences between the groups could not be explained by different degrees of alveolar hypoxia in keeping with experimental design nor by differences in metabolic rates. Also, the different patterns were consistent, being observed at rest in both the morning and the afternoon measurements and during two standard grades of exercise. Most of the ventilatory adaptation to high altitude in the group without CO<sub>2</sub> should have been accomplished during four days at high altitude and it is of interest that by this time the measured ventilations at rest and during exercise were equivalent in the two groups. Presumably the usual respiratory alkalosis of high altitude exposure did not occur with CO<sub>2</sub> supplementation, with the consequence that the hypoxic peripheral chemoreceptor stimulation of ventilation, unopposed by alkalosis, could immediately achieve a higher stable value. Thus, the supplemental CO<sub>2</sub> prevented the ventilatory acclimatization process that normally occurs on high altitude exposure.

#### b) Ventilatory Responses to CO<sub>2</sub> Stimulation

The changes in ventilation discussed above were accompanied by a progressive shift to a lower P<sub>CO<sub>2</sub></sub> of the curve that relates ventilation to P<sub>CO<sub>2</sub></sub> in the group without CO<sub>2</sub>. In contrast, in the group with CO<sub>2</sub> added, the stable ventilation was characterized by an unchanged ventilation-P<sub>CO<sub>2</sub></sub>

relationship. We quantitated the position of the relationship at the X-axis intercept of the extrapolated line relating ventilation to end tidal  $P_{CO_2}$ , the parameter "B" of Lloyd et al. (1958). Because our ventilatory responses to  $CO_2$  were performed under hyperoxic conditions and the slope of the line did not change significantly with time, the B parameter appeared an adequate indicator of the shift in the ventilation- $CO_2$  relationship. Indeed, B parameter is used to indicate shifts by the Oxford group (Cunningham et al., 1961). It has been suggested that the shift in the relationship is a better indicator of ventilatory acclimatization to high altitude than  $P_{ACO_2}$  (Mines and Sorensen, 1970). However, "B" and  $P_{ACO_2}$  are well correlated, Fig. 4, suggesting that either measurement describes the acclimatization process. Eger, et al. (1968) gave  $CO_2$  supplementation during eight hours of acclimatization to nitrogen dilution hypoxia. They found, with hypocapnic hypoxia, the ventilation- $P_{CO_2}$  relationship shifted more to lower values of  $P_{CO_2}$  (-8 torr) than with normocapnic hypoxia (-4 torr). The relatively large changes which occurred during brief hypoxia probably reflected their data analysis. They arbitrarily took values of  $P_{CO_2}$  at ventilation of  $15 \text{ L/min} \cdot \text{m}^2$ . Because the slope of the ventilation- $P_{CO_2}$  line increases during hypoxia their differences are magnified. However, both the results of Eger et al. and our own results from the present study indicate that  $CO_2$  supplementation interferes with the process of ventilatory adaptation to high altitude.

### c) Ventilatory Responses to Isocapnic Hypoxia

Ventilatory response to isocapnic hypoxia increases with time during high altitude exposure (Cruz and Hurtado, 1970, Forster et al. 1971, Michel



and Milledge, 1963, Reed and Kellogg, 1960). We have also made the same observation in the group without CO<sub>2</sub>, which correlated with the shift of the curve that relates ventilation-PCO<sub>2</sub>. Thus, it appears that both peripheral and central chemoreceptors influenced the process of ventilatory acclimatization to high altitude. In contrast, no significant changes with time in the ventilatory response to isocapnic hypoxia was observed in the CO<sub>2</sub> group. When arterial pH remains similar at altitude as well as at sea level by CO<sub>2</sub> inhalation, no difference in the ventilatory response to hypoxia has been observed (Gabel and Weiskopf, 1975). Since no shift was measured also in the ventilation-CO<sub>2</sub> curve in the CO<sub>2</sub> group, prevention of hypocapnia did not allow the chemoreceptors to be altered. Thus, no ventilatory acclimatization took place.

#### Mechanisms

Severinghaus et al. (1963) originally proposed that the initial respiratory alkalosis with high altitude exposure, along with its moderating effect on ventilation, was progressively reduced by restoring the alkaline cerebrospinal fluid pH toward normal sea level values. Subsequently, however, measurements in man (Dempsey, Forster, and de Pico, 1974; Dempsey et al., 1975; Forster, Dempsey and Chosy, 1975; Weiskopf, Gabel, and Fenel, 1976) and animals (Bureau and Bouberot, 1975; Cruz et al., 1978; Orr et al., 1975) during altitude acclimatization did not show such normalization of the spinal fluid pH. In addition, recent evidence suggests that the local central nervous system tissue [H<sup>+</sup>] is more acid than the spinal fluid during acclimatization to hypoxia (Davies, 1978; Fenel, Gabel and Wolfe, 1979). Our present study does not report blood or spinal fluid pH

values. But the results are compatible with the concept that CO<sub>2</sub> breathing probably avoided alkalization of the central and peripheral chemoreceptors allowing the hypoxic stimulus to be fully effective at the outset of the altitude exposure.

#### ACKNOWLEDGEMENTS

We gratefully acknowledge the valuable assistance of the chamber operators, James A. Devine, Joseph F. Gardella and Edward J. Powers and observers A.G. Bagtas, M.J. Bharmal, J.T. Crepeau, L.M. Dong, J.M. Forster and J.C. Howell, and the technical research support of Robert Mello, Chief, and Charles Bravo and William Clifford. We particularly appreciate the cooperative attitude of the subjects.

## REFERENCES

- Bureau, M. and P. Bouverot. Blood and CSF acid-base changes, and rate of ventilatory acclimatization of awake dogs to 3550 m. *Resp. Physiol.* 24:203-216, 1975.
- Cruz, J.C. and A. Hurtado. Peripheral chemoreceptors hyperresponse to hypoxic isocapnic stimulation at high altitude. *Fed. Proc.* 29:591, 1970 (Abstract).
- Cruz, J.C., D.L. Wolfe, E.E. Beekman, A. Cymerman and J.T. Maher. Ventilation and blood-cerebrospinal fluid changes with high altitude acclimatization in the goat. *Physiologist* 21:25, 1978 (Abstract).
- Cunningham, D.J.C., D.G. Shaw, S. Lahiri and B.B. Lloyd. The effect of maintained ammonium chloride acidosis on the relation between pulmonary ventilation and alveolar oxygen and carbon dioxide in man. *Quart. J. Exptl. Physiol.* 46:322-334, 1961.
- Davies, D.G. Evidence for cerebral extracellular fluid  $[H^+]$  as a stimulus during acclimatization to hypoxia. *Resp. Physiol.* 32:167-182, 1978.
- Dempsey, J.A., H.V. Forster, C.A. do Pico. Ventilatory acclimatization to moderate hypoxemia in man. *J. Clin. Invest.* 53:1091-1100, 1974.
- Dempsey, J.A., H.V. Forster, N. Gledhill and G.A. do Pico. Effects of moderate hypoxemia and hypocapnia on CSF  $[H^+]$  and ventilation in man. *J. Appl. Physiol.* 38:665-674, 1975.

Eger, E.I., II, R.H. Kellogg, A.H. Mines, M. Lima-Ostos, C.G. Morrill and D.W. Kent. Influence of CO<sub>2</sub> on ventilatory acclimatization to altitude. *J. Appl. Physiol.* 24:607-615, 1968.

Fenl, V., R.A. Gabel and D. Wolfe. Composition of cerebral fluids in goats adapted to high altitude. *J. Appl. Physiol.* (in press).

Forster, H.V., J.A. Dempsey, M.L. Birnbaum, W.G. Reddan, J. Thoden, R.F. Grover and J. Rankin. Effect of chronic exposure to hypoxia on ventilatory response to CO<sub>2</sub> and hypoxia. *J. Appl. Physiol.* 31:586-592, 1971.

Forster, H.V., J.A. Dempsey and L.W. Chosy. Incomplete compensation of CSF [H<sup>+</sup>] in man during acclimatization to high altitude (4300 m). *J. Appl. Physiol.* 38:1067-1072, 1975.

Gabel, R.A. and R.B. Weiskopf. Ventilatory interaction between hypoxia and [H<sup>+</sup>] at chemoreceptors of man. *J. Appl. Physiol.* 39:292-296, 1975.

Grover, R.F., J.T. Reeves, J.T. Maher, R.E. McCullough, J.C. Cruz, J.C. Denniston and A. Cymerman. Maintained stroke volume but impaired arterial oxygenation in man at high altitude with supplemental CO<sub>2</sub>. *Circ. Res.* 38:391-396, 1976.

Kellogg, R.H. The role of CO<sub>2</sub> in altitude acclimatization. In: The Regulation of Human Respiration, edited by J.C. Cunningham and B.B. Lloyd. Philadelphia, PA; F.A. Davis Co., 1953, pp. 379-395.

Kellogg, R.H. Central chemical regulation of respiration. In: Handbook of Physiology, Sec. 3, Vol. 1, Respiration. Washington, D.C.: Am. Physiol. Soc., 1964, pp. 507-534.

Kellogg, R.H. Oxygen and carbon dioxide in the regulation of respiration. Fed. Proc. 36:1658-1662, 1977.

Kellogg, R.H., N. Pace, E.R. Archibald and B.E. Vaughn. Respiratory response to inspired CO<sub>2</sub> during acclimatization to an altitude of 12,470 feet. J. Appl. Physiol. 11:65-71, 1957.

Lloyd, B.B., G.M. Jukes, and D.J.C. Cunningham. The relation between alveolar oxygen pressure and the respiratory response to carbon dioxide in man. Quart. J. Exptl. Physiol. 43:214-227, 1958.

McFarland, R.A. and D.B. Dill. A comparative study of the effects of reduced oxygen pressure on man during acclimatization. J. Aviat. Med. 9:18-44, 1938.

Michel, C.C. and J.S. Milledge. Respiratory regulation in man during acclimatization to high altitude. J. Physiol. (London) 168:631-643, 1963.

Mines, A.H. and S.C. Sorenson. Ventilatory response of awake normal goats during acute and chronic hypoxia. J. Appl. Physiol. 28:826-831, 1970.

Orr, J.A., G.E. Bisgard, H.V. Forster, D.D. Buss and J.A. Will. Cerebrospinal fluid alkalosis during high altitude sojourn in unanesthetized ponies. Resp. Physiol. 25:23-37, 1975.

Rahn, H. and A.B. Otis. Alveolar air during simulated flights to high altitudes. Amer. J. Physiol. 150:202-221, 1947.

Read, D.J.C. A clinical method for assessing the ventilatory response to carbon dioxide. Aust. Ann. Med. 16:20-32, 1967.

Reed, D.J. and R.H. Kellogg. Effect of sleep on hypoxic stimulation of breathing at sea level and altitude. *J. Appl. Physiol.* 15:1130-1134, 1960.

Severinghaus, J.W., R.A. Mitchell, B.W. Richardson and M.M. Singer. Respiratory control at high altitude suggesting active transport regulation of CSF pH. *J. Appl. Physiol.* 18:1155-1166, 1963.

Weil, J.V., E. Byrne-Quinne, I.E. Sodal, W.O. Friesen, B. Underhill, G.F. Filley and R.F. Grover. Hypoxic ventilatory drive in normal man. *J. Clin. Invest.* 49:1061-1072, 1970.

Weil, J.V., I.E. Sodal, and R.P. Speck. A modified fuel cell for the analysis of oxygen concentration of gases. *J. Appl. Physiol.* 23:419-422, 1967.

Weiskopf, R.B., R.A. Gabel and V. Fenel. Alkaline shift in lumbar and intracranial CSF in man after 5 days of high altitude. *J. Appl. Physiol.* 41:93-97, 1976.

TABLE 1. Ventilatory measurements at rest at low altitude and with or without CO<sub>2</sub> addition at high altitude.\*

4 Subjects with CO<sub>2</sub>

Time at Altitude	P <sub>B</sub> (mm Hg)	P <sub>A</sub> O <sub>2</sub> (mm Hg)	P <sub>A</sub> CO <sub>2</sub> (mm Hg)
Control	760	105 ± 2	39 ± 1
3 h.	465	59 ± 1	
27 h.	465	62 ± 2	43 ± 2
51 h.	440	57 ± 2	42 ± 1
75 h.	440	55 ± 2	40 ± 1

4 Subjects without CO<sub>2</sub>

Control	760	108 ± 1	39 ± 1
3 h.	492	55 ± 1	40 ± 1
27 h.	492	58 ± 2	37 ± 1
51 h.	492	59 ± 1	35 ± 1
75 h.	475	61 ± 2	33 ± 3

\*Given are mean values and one standard error of the mean.

TABLE 2. Mean value and one standard error of ventilation ( $\dot{V}_{E_{BTPS}}$ ) and oxygen uptake ( $\dot{V}O_2$ ) in liters/minute at sea level and high altitude, in subjects seated on a bicycle ergometer at rest and during two 6-minute exercise stints.

Time at Altitude	Work Load in Kg/m/min					
	Rest		300		600	
	$\dot{V}_E$	$\dot{V}O_2$	$\dot{V}_E$	$\dot{V}O_2$	$\dot{V}_E$	$\dot{V}O_2$
4 subjects with CO <sub>2</sub>						
Control	12 ± 2.7	.36 ± .05	24 ± 0.8	.96 ± .05	41 ± 1.8	1.56 ± .06
8 h.	20 ± 1.2	.40 ± .04	46 ± 1.2	.94 ± .02	80 ± 6.2	1.58 ± .05
32 h.	23 ± 1.1	.38 ± .04	51 ± 1.2	.96 ± .05	91 ± 7.9	1.60 ± .08
56 h.	23 ± 1.0	.40 ± .04	52 ± 2.1	1.00 ± .04	98 ± 8.5	1.75 ± .04
100 h.	22 ± 0.6	.38 ± .03	56 ± 3.2	1.05 ± .02	101 ± 9.5	1.72 ± .04
4 subjects without CO <sub>2</sub>						
Control	12 ± 1.2	.32 ± .01	27 ± 2.8	.92 ± .03	44 ± 2.6	1.56 ± .05
8 h.	15 ± 1.3	.39 ± .03	32 ± 2.3	.98 ± .03	64 ± 9.5	1.62 ± .06
32 h.	18 ± 1.9	.44 ± .02	38 ± 3.2	1.06 ± .02	65 ± 8.3	1.68 ± .05
56 h.	19 ± 2.6	.38 ± .01	41 ± 6.4	1.02 ± .02	69 ± 8.9	1.60 ± .03
100 h.*	22 ± 5.4	.35 ± .02	50 ± 8.8	1.02 ± .02	88 ± 17.0	1.64 ± .04

\*n = 3.



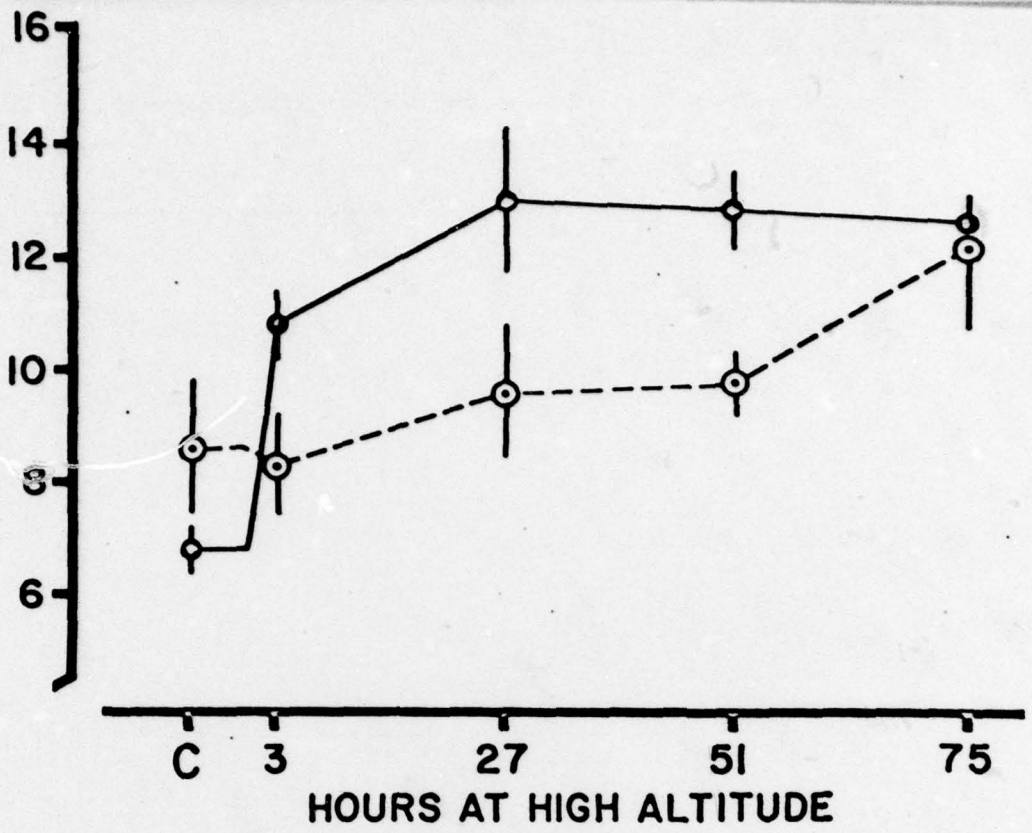
## LEGENDS

- Figure 1** Measurements of resting ventilation made each morning during 75 hours of exposure to simulated high altitude. Solid circles indicate mean values in four subjects given supplemental  $\text{CO}_2$  at high altitude. All measurements at high altitude were greater than the sea level measurement. Open circles indicate mean values in four subjects without  $\text{CO}_2$  addition. At high altitude, only the measurement at 75 hours differed from the sea level control. One standard error of the mean is indicated.
- Figure 2** Measurements of resting and exercise ventilation (made in the afternoons with the subjects seated on the bicycle ergometer) during 100 hours of exposure to simulated high altitude. Symbols represent interpolated ventilations at 3 standard metabolic rates as explained in the results. Closed circles represent the group with  $\text{CO}_2$  and the open circles represent the group without  $\text{CO}_2$ .
- Figure 3** Measurements relating to control of breathing made each morning during 75 hours exposure to simulated high altitude.
- Top: Hypoxic ventilatory responses ("A" value) for the group with  $\text{CO}_2$  (solid circles) show no change. The group without  $\text{CO}_2$  (open circles) show a progressive increase. The values at 75 hours are different between the two groups.
- Middle: The ventilatory responses to  $\text{CO}_2$  ("S" value) were not altered with high altitude exposure in either group.
- At 75 hours exposure the values differed between the groups.

Bottom: The shift to a lower  $PCO_2$  of the line relating ventilation to  $P_ACO_2$  as measured by the intercept "B" occurred only in group without  $CO_2$ . At 75 hours, the two groups were different.

Figure 4 Relationship of the intercept "B" to  $P_ACO_2$  in each of the four subjects without  $CO_2$  at sea level and during 75 hours of high altitude exposure.

$\dot{V}_E$   
l/min  
BTPS



*Figure 1*

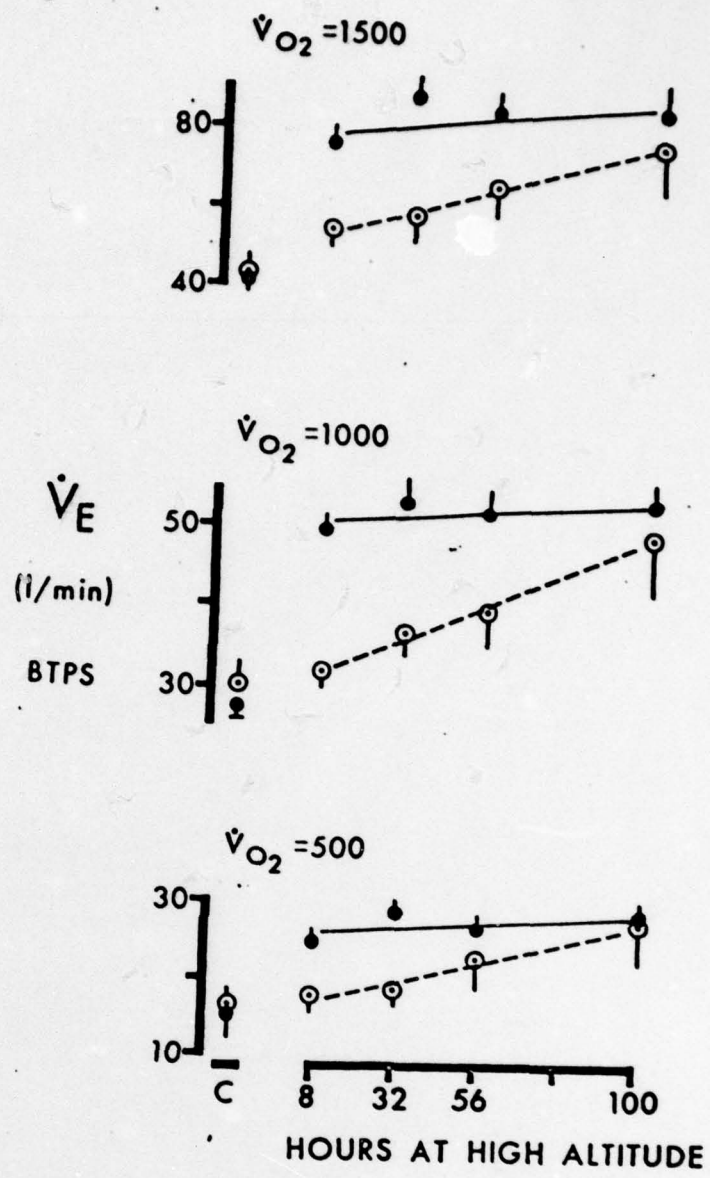
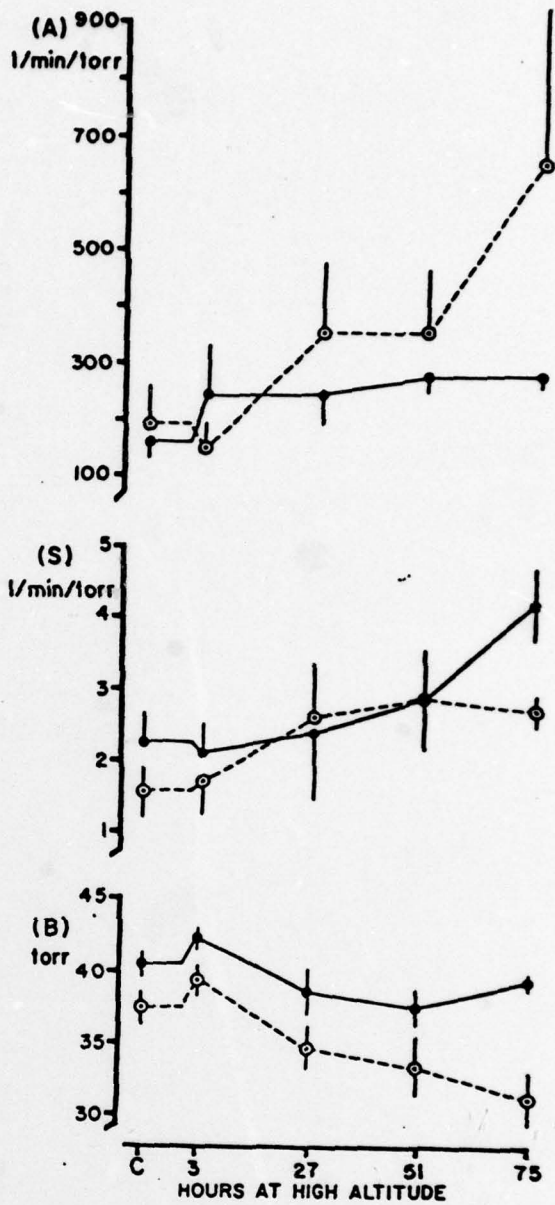
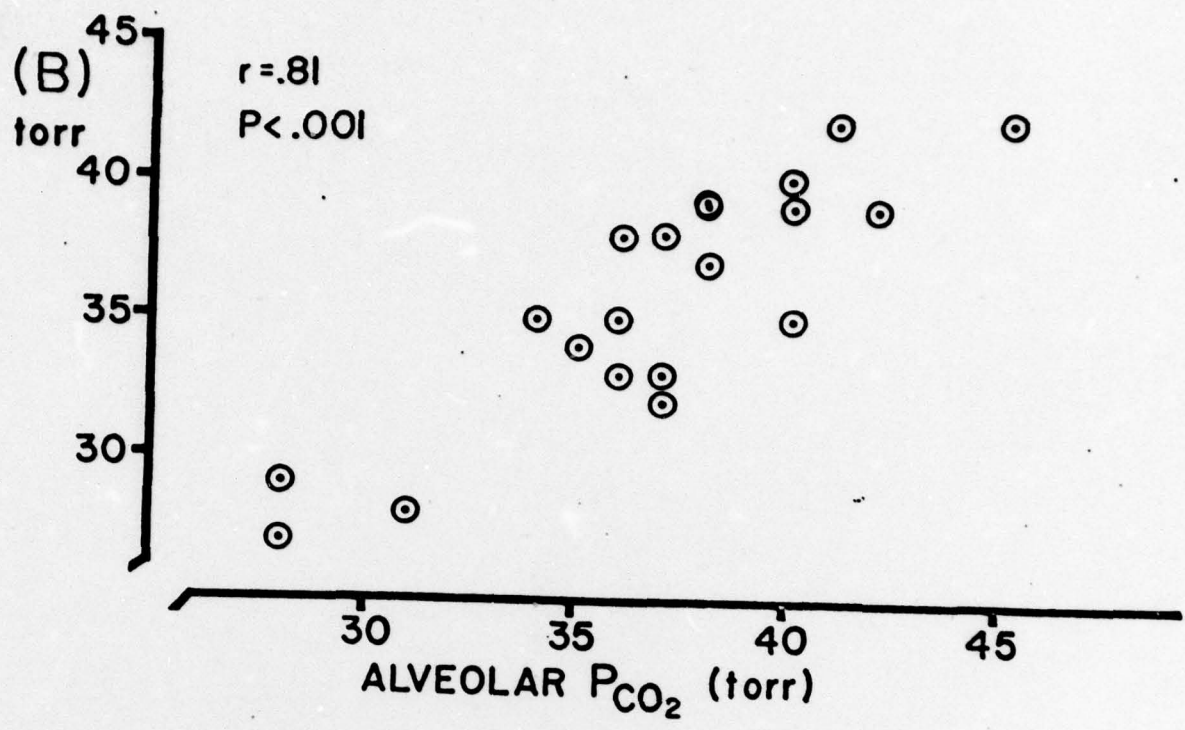


Figure 2



*Figure 3*



*Figure 4*

The views, opinions, and/or findings contained in this report are those of the author and should not be construed as an official Department of the Army position, policy, or decision, unless so designated by other official documentation.

Human subjects participated in this study after giving their free and informed voluntary consent. Investigators adhered to AR 70-25 and USAMRDC Regulation 70-25 on Use of Volunteers in Research.