

AD-A071 090

SCRIPPS INSTITUTION OF OCEANOGRAPHY SAN DIEGO CALIF --ETC F/6 8/10
BEDFORMS AND THE BENTHIC BOUNDARY LAYER IN THE NORTH ATLANTIC: --ETC(U)
DEC 78 P LONSDALE N00014-75-C-0704
MPL-U-71/78 NL

UNCLASSIFIED

| OF |
AD
A071090



END
DATE
FILMED
8 -79
DDC

AD A071090

LEVEL

12



MARINE PHYSICAL LABORATORY
of the Scripps Institution of Oceanography
La Jolla, California 92093

BEDFORMS AND THE BENTHIC BOUNDARY LAYER IN THE
NORTH ATLANTIC: A CRUISE REPORT OF INDOMED LEG 11

Peter Lonsdale

Sponsored by
Office of Naval Research
N00014-75-C-0704

DDC
RECEIVED
JUL 12 1979
RECEIVED
C

DDC FILE COPY

Reproduction in whole or in part is permitted
for any purpose of the U.S. Government

Document cleared for public release
and sale; its distribution is unlimited

29 December 1978

SIO REFERENCE 78-30

79 07 11 014

UNCLASSIFIED

SECURITY CLASSIFICATION OF THIS PAGE (When Data Entered)

| REPORT DOCUMENTATION PAGE | | READ INSTRUCTIONS BEFORE COMPLETING FORM |
|---|--|---|
| 1. REPORT NUMBER MPL-U-71/78, SIO-REF-78-34 | 2. GOVT ACCESSION NO. | 3. RECIPIENT'S CATALOG NUMBER |
| 4. TITLE (and Subtitle) Bedforms and the Benthic Boundary Layer in the North Atlantic: A Cruise Report of INDOMED Leg 11. | 5. TYPE OF REPORT & PERIOD COVERED Summary rept. Aug-Sep 78 | |
| 7. AUTHOR(s) Peter Lonsdale | 6. PERFORMING ORG. REPORT NUMBER MPL-U-71/78 | |
| 9. PERFORMING ORGANIZATION NAME AND ADDRESS University of California, San Diego, Marine Physical Laboratory of the Scripps Institution of Oceanography, San Diego, Calif. 92132 | 8. CONTRACT OR GRANT NUMBER(s) ONR N00014-75-C-0704 | |
| 11. CONTROLLING OFFICE NAME AND ADDRESS Office of Naval Research, Code 222, Dept. of the Navy, 800 Quincy St., Arlington, Virginia 22217 | 10. PROGRAM ELEMENT, PROJECT, TASK AREA & WORK UNIT NUMBERS | |
| 14. MONITORING AGENCY NAME & ADDRESS (if different from Controlling Office) 12 25p. | 12. REPORT DATE 29 December 1978 | |
| | 13. NUMBER OF PAGES 15 | |
| | 15. SECURITY CLASS. (of this report) Unclassified | |
| 16. DISTRIBUTION STATEMENT (of this Report) Document cleared for public release and sale; its distribution is unlimited. | | |
| 17. DISTRIBUTION STATEMENT (of the abstract entered in Block 20, if different from Report) | | |
| 18. SUPPLEMENTARY NOTES | | |
| 19. KEY WORDS (Continue on reverse side if necessary and identify by block number) Bottom currents, mud waves, erosion. | | |
| 20. ABSTRACT (Continue on reverse side if necessary and identify by block number) In August and September 1978, deep-tow surveys were conducted with R/V Melville at four sites in the North Atlantic: a field of mud waves on the Moroccan continental rise; a patch of hyperbolae-creating bedforms with interfingering debris flows on the Saharan continental rise; an area of abyssal furrows near the crest of Eastward Scarp on the Bermuda Rise; and a field of furrowed sediment waves on the southwest Bermuda Rise. In addition to near-bottom acoustic records, the deep-tow instrument collected stereo | | |

217 400

LB

UNCLASSIFIED

SECURITY CLASSIFICATION OF THIS PAGE(When Data Entered)

20. Abstract (Continued)

photos, CTD and nephelometer data, and samples of bottom water and suspended sediment. There were also current meter, hydrocast and coring stations. This report includes preliminary deep-tow maps of each site, locating photo runs and samples, and presents a few typical sections of data.



| | |
|--------------------|-------------------------------------|
| Accession For | |
| NTIS GRA&I | <input checked="" type="checkbox"/> |
| DDC TAB | <input type="checkbox"/> |
| Unannounced | <input type="checkbox"/> |
| Justification | |
| By _____ | |
| Distribution/ | |
| Availability Codes | |
| Dist. | Avail and/or special |
| A | |

SECURITY CLASSIFICATION OF THIS PAGE(When Data Entered)

UNIVERSITY OF CALIFORNIA, SAN DIEGO
MARINE PHYSICAL LABORATORY OF THE
SCRIPPS INSTITUTION OF OCEANOGRAPHY
LA JOLLA, CALIFORNIA 92093

BEDFORMS AND THE BENTHIC BOUNDARY LAYER IN THE
NORTH ATLANTIC: A CRUISE REPORT OF INDOMED LEG 11

Peter Lonsdale

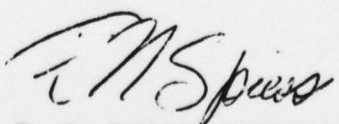
Sponsored by
Office of Naval Research
N00014-75-C-0704

SIO REFERENCE 78-30

29 December 1978

Reproduction in whole or in part is permitted
for any purpose of the U.S. Government

Document cleared for public release
and sale; its distribution is unlimited


F. N. SPIESS, DIRECTOR
MARINE PHYSICAL LABORATORY

MPL-U-71/78

BEDFORMS AND THE BENTHIC BOUNDARY LAYER IN THE
NORTH ATLANTIC: A CRUISE REPORT OF INDOMED LEG 11

Peter Lonsdale

ABSTRACT

In August and September 1978, deep-tow surveys were conducted with R/V Melville at four sites in the North Atlantic: a field of mud waves on the Moroccan continental rise; a patch of hyperbolae-creating bedforms with interfingering debris flows on the Saharan continental rise; an area of abyssal furrows near the crest of Eastward Scarp on the Bermuda Rise; and a field of furrowed sediment waves on the southwest Bermuda Rise. In addition to near-bottom acoustic records, the deep-tow instrument collected stereo photos, CTD and nephelometer data, and samples of bottom water and suspended sediment. There were also current meter, hydrocast and coring stations. This report includes preliminary deep-tow maps of each site, locating photo runs and samples, and presents a few typical sections of data.

INTRODUCTION

The primary mission on Leg 11 of Scripps' 20-month Expedition INDOMED was to conduct near-bottom surveys of four sites in the North Atlantic where the shape of the deep sea floor has been affected by fast bottom currents. The principal survey tool was the Marine Physical Laboratory's deep-tow instrument system (Spiess and Tyce, 1973). We hoped that at some of the sites the currents responsible for such superficial geologic features as bedforms and erosional surfaces were still active, so that by measuring and correlating properties of the ocean's bottom layer and the sedimentary seabed we might disentangle and understand sediment-water interactions in the benthic boundary layer. However, direct hydrographic evidence for fast modern currents was lacking at all of the chosen sites, so an important part of our field program was to deploy arrays of near-bottom current meters. They monitored the speed and direction of prevailing bottom currents, albeit only for the 3-6 days available for each survey. Additional measurement of bottom water properties was carried out on samples collected by Niskin-bottle hydrocasts and by 9-litre bottles attached to the deep-tow instrument. This vehicle also carried a Neil Brown CTD, whose measurements were digitally logged at 1 to 10 second intervals, a filter pump for collecting suspended sediment, and, on one lowering, a Lamont long-term nephelometer which recorded near-bottom turbidity every 7.5 min. Several piston and gravity cores were collected from sites whose lithology, or lithologic diversity, had not been adequately established by previous bottom sampling.

In addition to personnel from the Scripps Institution of Oceanography, the scientific party aboard R/V Melville included investigators from Woods Hole Oceanographic Institution, the University of Rhode Island, and Lamont-Doherty Geological Observatory. Their involvement in the deep-tow research effort was separately funded by ONR contracts with those institutions. Part of the station time was also spent deploying a long-term current meter plus time-lapse camera (for M. Wimbush, U.R.I.), retrieving long-term current meters, nephelometers and sediment traps from the northeast Bermuda Rise (for E. Laine, U.R.I.; W. Gardner, Lamont; and M. Richardson, Woods Hole), and retrieving a long-term current meter from the southwest Bermuda Rise (for B. Tucholke, Lamont). No results of these ancillary operations will be presented in this cruise report. Its purpose is to present preliminary maps of the deep-tow surveys, locating sampling and camera stations; to describe the quality and probable usefulness of the deep-tow data at each site; and to show samples of deep-tow records, suggesting some of the questions they address.

Most of the investigators on INDOMED Leg 11 also participate in ONR's High Energy Benthic Boundary Layer Experiment, a long-term program on parts of the deep-sea floor swept by fast currents. Although the geographic focus of this efforts is the continental rise at the western boundary of the North Atlantic, our cruise has been designated, rather *ex post facto*, HEBBLE Cruise 2.

CRUISE NARRATIVE

R/V *Melville* departed Cadiz, Spain, on the evening of 11 August 1978, and arrived in St. George, Bermuda, 33 days later, on 13 September. A brief intermediate stop of 2 hours was made at Santa Cruz de Tenerife, Canary Islands, where we picked up needed scientific supplies and had a physician come aboard to treat our sick.

The overall disposition of time on the leg is shown on Fig. 1. During the long traverse of the North Atlantic we processed much of the data from the two eastern sites, and while underway mapped the structure of the surface mixed layer by taking XBTs at frequent (2 hour) intervals, as part of a global study of ocean surface temperatures by K. Kenyon, NORPAX. Magnetic and 3.5 kHz profiler data were collected along most of the track, except during the brief run from the last station into port, when all hands frantically disassembled and packed equipment in preparation for a complete off-load in Bermuda.

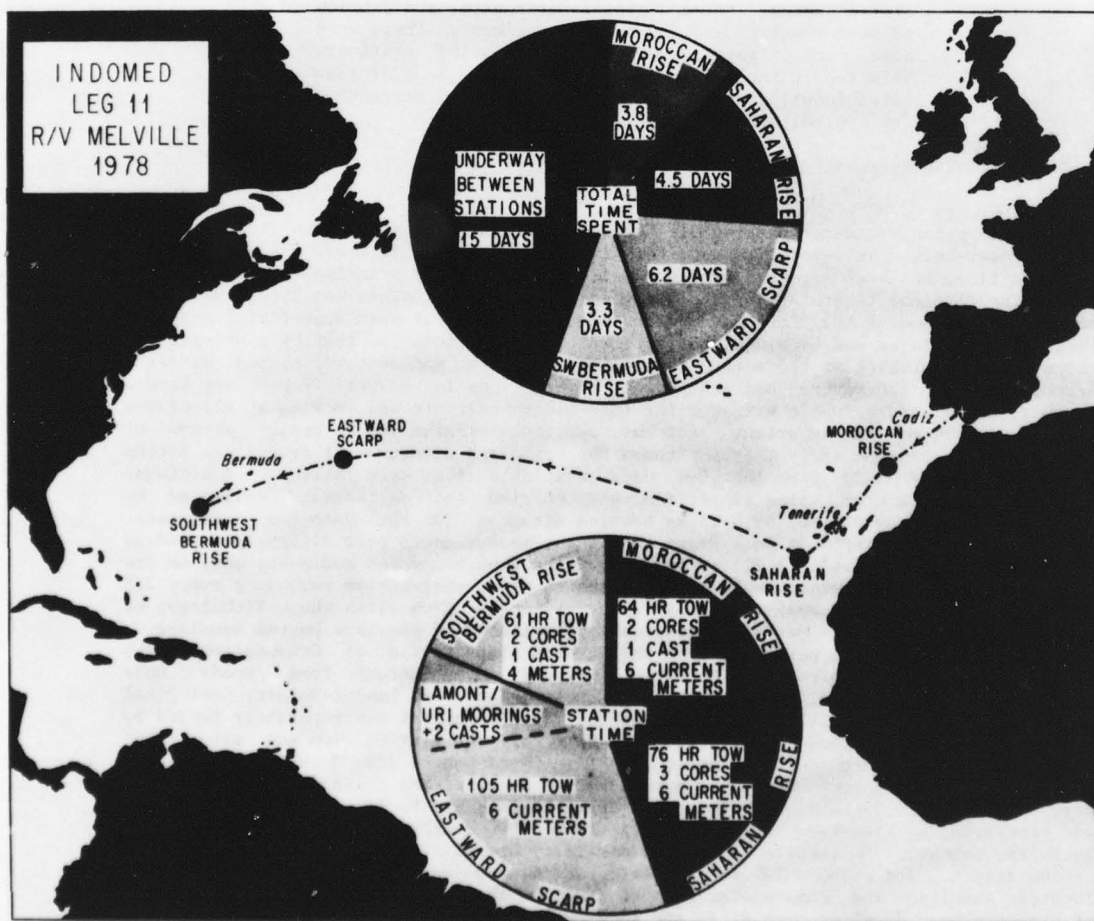


Fig. 1. Cruise track and time allocation, INDOMED Leg 11.



Fig. 2. Location of deep-tow sites on the Moroccan and Saharan continental rises, with a hypothetical pattern of bottom currents. Bedform distribution from Jacobi et al. (1975) and Embley et al. (1978).

Performance of the vessel and the deep-tow instrument was near-perfect, with minimal time loss because of mechanical or electronic breakdowns. Also noteworthy was the successful and prompt recovery of all 24 freevehicle packages launched during the leg, together with 3 arrays that had been deployed on earlier expeditions. Weather was fair throughout the leg, and never limited operations, though for a time it seemed that the work southwest of Bermuda might be threatened by a hurricane.

EASTERN ATLANTIC OPERATIONS

Justification

Surface-ship 3.5 kHz profiles across the continental rise of northwestern Africa indicated that there was a relatively narrow band of regular sedimentary bedforms at depths of 4000-4500 m on the lower rise. Off Morocco, Jacobi et al. (1975) mapped a 10-50 km-wide band of mud waves which were so large (0.5-2 km wavelength) that their orientation and some of their internal structure could sometimes be resolved on surface-ship profiles. They were reported to be parallel or "somewhat oblique" to the regional contours, and to have migrated upslope. These are properties of a large majority of the abyssal mud waves displayed on 3.5 kHz profiles from many parts of the ocean (Embley and Langseth, 1977). South of the Canary Islands, off Spanish Sahara, Embley et al. (1978) mapped a zone of hyperbolic echoes that they suggested might be created by abyssal furrows oriented along the slope of the rise.

We postulated that these bands of bedforms had been created by a bottom water boundary current that flowed northeast along the rise (Fig. 2). Because such a current might be expected to show less Pleistocene fluctuations than those (such as the Western Boundary Undercurrent) with a northern source, there was some hope that the bedforms beneath it might be in equilibrium with present flow conditions, rather than being relict. A possible scenario was that the bottom current might be erosional in the sediment-starved reach off the Sahara, but become depositional after receiving turbidity current injections from the Canary Islands and canyons on the Moroccan slope.

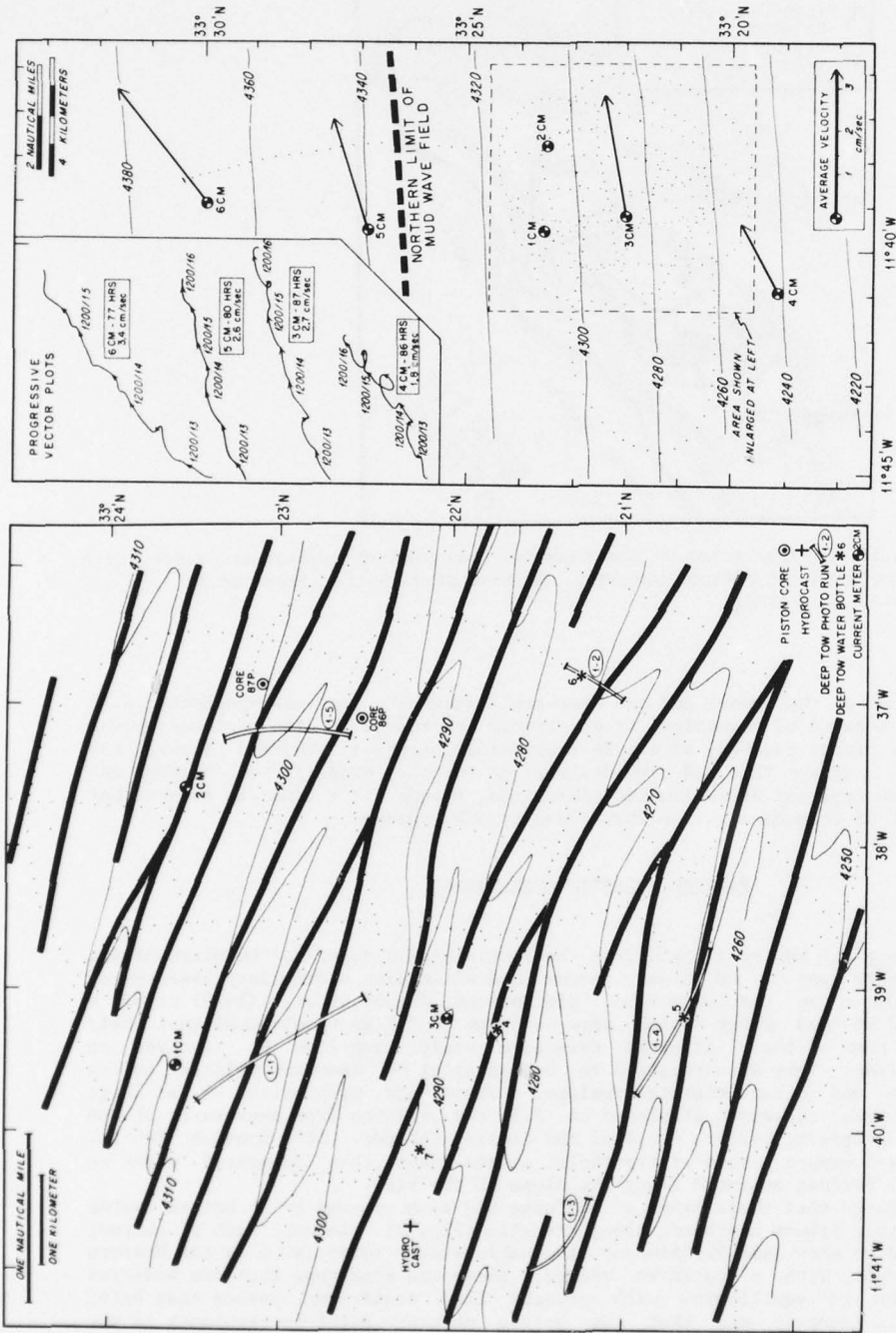


Fig. 3. The Moroccan Rise site; depths in corrected meters. Map at left shows pattern of mud wave crests (solid lines) within the area of detailed survey. Map at right shows generalized contours, and the current meter results.

The field program was designed primarily to test the presence of any eastern boundary current and to measure its properties; to resolve the morphology and internal structure of the mud waves and the bedforms responsible for hyperbolic echoes; and to establish whether the bedforms were erosional or depositional, whether they were in equilibrium, and if so whether relationships between properties of the flow and of the bedforms could be identified. In addition, we examined the morphology, structure and lithology of deposits from debris flows whose distal ends had entered a zone of well developed hyperbolae: debris flows are important agents of downslope sediment transport at this continental margin (Embley and Jacobi, 1977).

Moroccan Rise Survey

The site selected for our survey of Moroccan Rise mud waves is in the northeastern part of the field, where regional contours trend almost east-west. A line of current meters (attached to transponders and 50 m above the seabed) straddled the lower (northern) boundary of the mud wave zone; Meters 1CM and 2CM malfunctioned, and the others recorded slow net flows to the northeast (Fig. 3). The fastest current speed measured during the four days of operation was 9 cm/sec.

A deep-tow profile up the rise began on the gently sloping terrain near Meter 6CM, but most of the deep tow effort was concentrated in a 60 km² area between 4250 m and 4310 m. There is complete side-scan sonar coverage of most of this area, but the only distinct targets on our side-scan records are the free-vehicle packages that we had deployed. About 600 stereo photos show a lumpy, heavily burrowed mud bottom, with few superficial tracks and trails. Four samples of near-bottom water were collected by deep tow's bottles, but at least two of them were so turbid that they must have been contaminated with seabed sediment. A bottom hydrocast, with Niskin bottles for collecting suspended material, was successfully completed after stressful delays caused by problems with the hydrowinch.

The deep-tow bathymetric and 4 kHz profiles establish that these mud waves have an average wavelength of about 0.7 km, and are oriented 30° oblique to the regional contours and to the measured current which parallels the contours (at 3CM, in the survey area). The acoustic signature of the shallowest resolvable stratum changes across the crest of each wave, becoming thicker and showing internal reflectors on the nearly horizontal upslope face; this indicates that the processes maintaining the wave form and its upslope migration continued to be active as the upper 3-4 m of the sediment section were deposited. A pair of 6 m piston cores (86P and 87P) were collected from upslope and downslope faces of adjacent waves.

Further analysis of data from this site will include better definition of mud wave morphology by removing the regional 0.5° slope of the rise from the soundings; integration of core and 4 kHz profiler data for the study of wave asymmetry and migration rates; and careful analysis of the CTD data to see how the benthic boundary layer structure is affected by the presence of bed corrugations. A short section of CTD temperature data that has already been examined suggests that the bottom mixed layer (about 50 m thick over most of the survey area) is thinner and less distinct in the deeper part of the survey area, and water temperatures above the mixed layer show a spatial variation that is directly correlated with the bathymetry of the waves (while an inverse correlation would be expected if isotherms tend to parallel the seafloor).

Saharan Rise Survey

The site selected for our survey of eastern boundary hyperbolic echoes (Fig. 4) is near 26°N, 50 km northeast (downstream) of a 50 km gap between two seamounts (Echo Bank and Papp Seamount) that project through the thick sediments of the rise. Although it was possible that the nearby seamounts might complicate the flow pattern, this site had the advantages of well-developed hyperbolae, mapped by a thorough surface ship survey (Embley et al., 1978); well defined upper and lower limits to the hyperbolated zone (at about 3850 and 4040 m, respectively); and the impingement of tongues of debris flow deposits.

Near-bottom current meters were deployed in a line down the continental rise, straddling the 50 km-wide band of hyperbolae (Fig. 5). Two meters over the smooth seafloor of the upper rise recorded slow net currents, upslope (7CM) and to the south (8CM), with a large superimposed tidal component. Meters 11CM and 10CM, over the hyperbolated zone, recorded a northeast flow, parallel to the contours and to the highly elongate M₂ tidal ellipse; maximum speeds were 18 cm/sec. Unfortunately, there was a malfunction in Meter 9CM, over the smooth and almost horizontal seafloor below 4040 m, so we were unable to test whether the northeasterly current was restricted in width to the zone of bedforms.

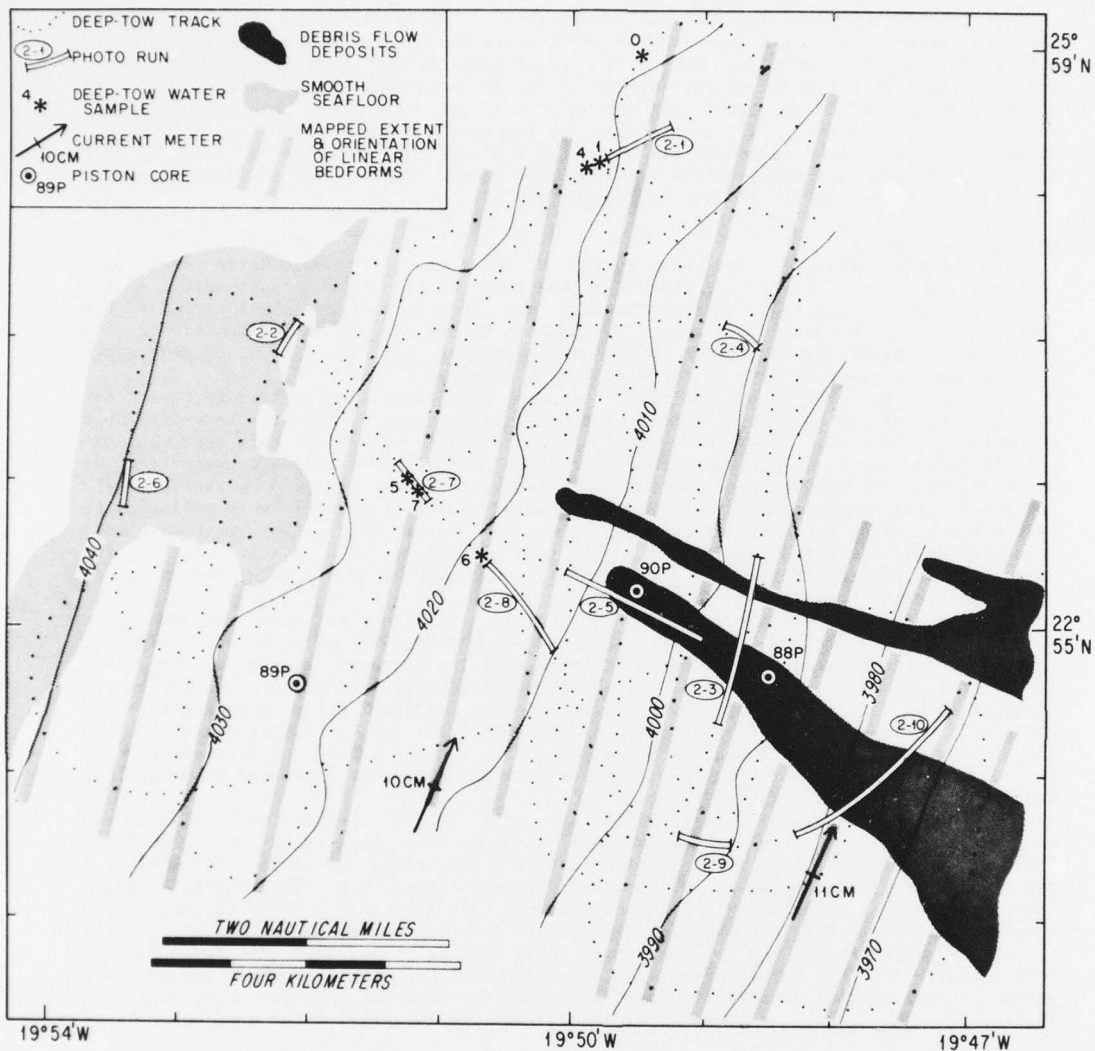


Fig. 4. The Saharan Rise site. Depths in corrected meters.

The deep-tow survey (Fig. 4) straddled the lower boundary of the hyperbolated zone. The linear corrugations responsible for the hyperbolae show up well on side-scan sonar records (Fig. 6), except where the tracks are nearly orthogonal to their trend and in the near field where the angle of incidence of sound waves is more than about 20° . We therefore acquired overlapping side-scan coverage, with approximately north-south tracks, of a large fraction of the survey area. Debris flow surfaces are also distinctive on the side scan records, because of their small scale roughness, especially near their edges and termini. About 1200 stereo pairs of bottom photos were taken on 10 photo runs, one across smooth, uncorrugated seafloor, 3 across debris flow tongues (showing a hummocky seabed with occasional free-standing moated clasts), and the remainder across the linear bedforms (which lack sharp breaks of slope, and are not well displayed on individual frames). A piston core (89P) sampled the calcareous sediment of the bedforms, and two others (88P and 90P) sampled both this material and the overlying 1-2 m thick debris flow deposit.

Analysis of the cores and 4 kHz profiles is required to determine whether the linear bedforms are erosional furrows or depositional mud waves. The bedform field is not a generally flat surface dissected by grooves, like the furrow fields in terrigenous sediment on Blake-Bahama Outer Ridge (Hollister et al., 1974) or Bermuda Rise (see below); the entire seafloor is corrugated with continuous slopes, and more closely resembles furrows in calcareous sediment near the Samoan Passage in the southwest Pacific (Lonsdale and Spiess, 1977). One hint that the features might be depositional is that subbottom reflectors seem to parallel the seafloor. We expect that analysis of the superposition of the bedforms and dateable debris flows will clarify the chronology of bedform development. Some of the debris flow surfaces are corrugated (Fig. 6), perhaps because thin debris flow deposits have maintained a fairly constant thickness over preexisting lineated relief, and at some debris flow margins secondary tongues of debris can be seen to extend along bedform troughs.

Bottom photos of scoured seabed prove the efficacy of modern currents for sediment redistribution at this site. Opportunities for explaining bedform characteristics by measured bottom water properties include relating their wavelength to the spatially changing thickness of the bottom mixed layer (monitored by the deep-tow CTD), and interpreting their unusual pattern of as a response to the reversing currents that were measured at current meters 10CM and 11CM. Most linear landforms on Earth have branches that open in the upstream direction, but those in the survey area have branches

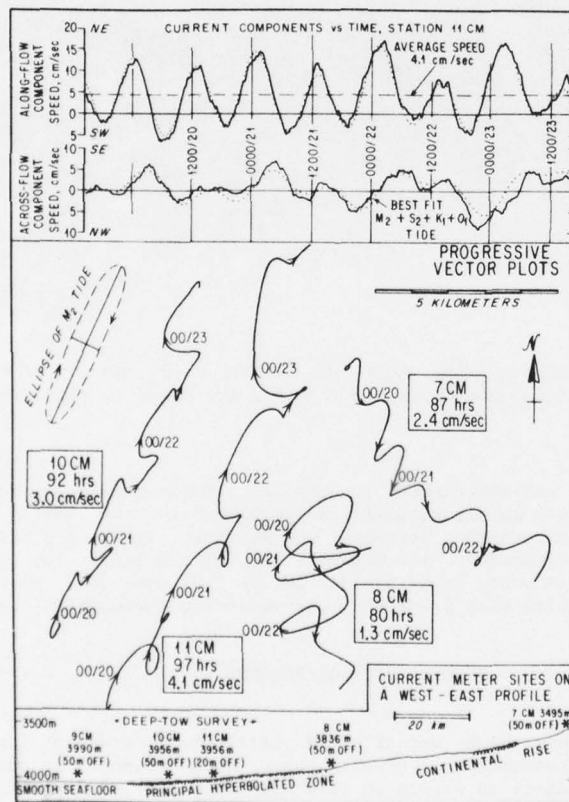


Fig. 5. Current meter results from the Saharan Rise. Progressive vector plots are shown for all successful meters, and components of the speed along and across the mean flow are shown for Station 11CM.

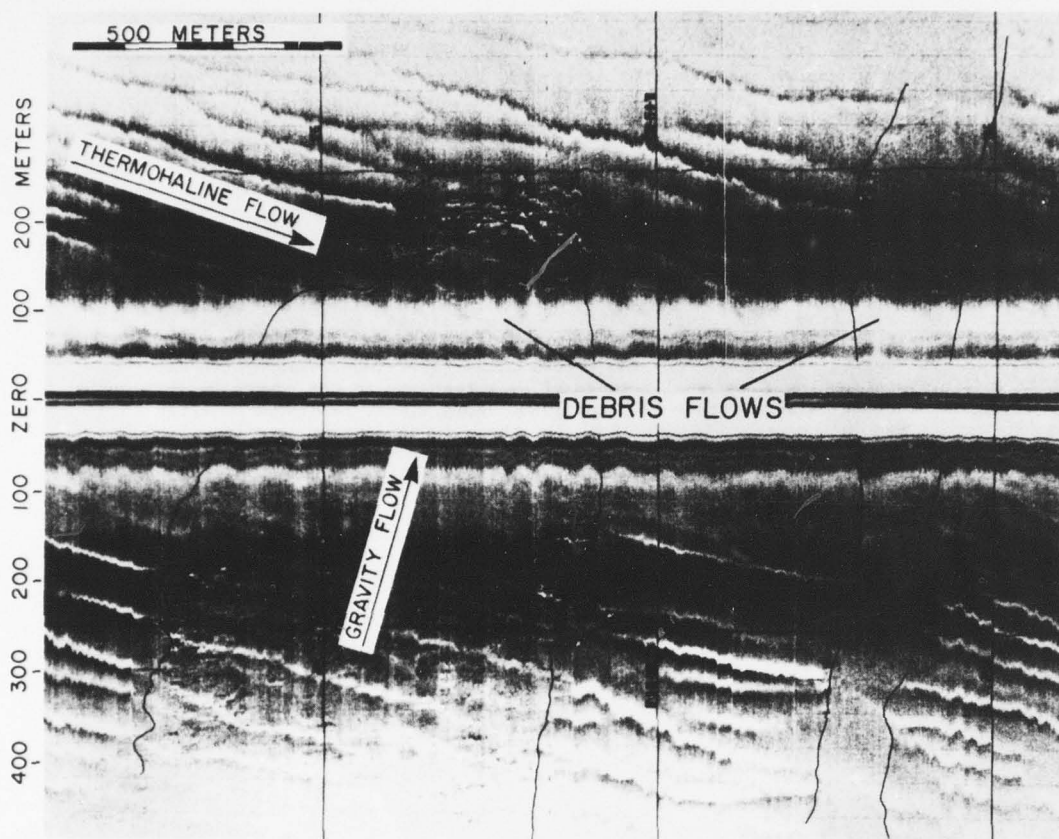


Fig. 6. A pair of side-scan records from the Saharan Rise, showing linear along-slope bedforms parallel to measured thermohaline currents, and cross cutting debris flows.

open to both the southwest and northeast. Because the tidal currents are faster than the thermohaline flow, and have an elongate ellipse parallel to the latter, the bottom current regime is one of alternating northeast and southwest flows, and this may explain the bimodal branching direction. The dominant role of the tides for moving bottom water, and presumably sediment, helps explain why we find such well developed linear bedforms at a site with quite slow predicted, and measured, thermohaline currents.

BERMUDA RISE OPERATIONS

Justification

The Bermuda Rise has thick deposits of terrigenous sediment far removed from terrestrial sources. Thermohaline currents have been responsible for transporting sediment from the North American margin to this mid-ocean site of deposition; in places these currents have also caused erosion of the rapidly deposited sediment. The return flow of the deep Gulf Stream is thought to be the principal supplier (Laine, 1978). After flowing southwest across the Sohm Abyssal Plain it encounters the northeastern Bermuda Rise at a steep slope known as Eastward Scarp. Since the exploratory photography and coring of R/V *Eastward*, this region has been the focus of intensive seismic profiling, which established the acoustic stratigraphy, identified outcrops of erosionally truncated strata on the scarp, and mapped zones of hyperbolae-causing bottom roughness. There had also been more coring, including the collection of long cores for

geotechnical studies (Silva et al., 1976), and a hydrocast transect by R/V Endeavor which found high concentrations of suspended sediment in bottom water beside the scarp. A few months before our INDOMED 11 survey, a pair of moorings that included nephelometers and sediment traps, as well as the first deep current meters in this area, had been tethered near the top and bottom of the scarp. Our objectives during the six days spent at the northeastern Bermuda Rise were to retrieve these moorings and take bottom hydrocasts alongside them, and to complement the large amount of surface-ship data with deep-tow observations and measurements of the near-bottom currents.

The southwestern Bermuda Rise is thought to be swept by northward-flowing Antarctic Bottom Water (e.g., Heezen et al., 1966; Tucholke et al., 1973). Regional profiler and coring surveys by Lamont had identified areas of seafloor, in both extensive patches and strips a few kilometers wide, that returned very "fuzzy" or hyperbolic echoes indicative of regular roughness. The objectives of our near-bottom survey there were to enhance interpretation of the surface ship data by identifying and describing the roughness elements, which were presumed to be bedforms, and to measure properties of the bottom water that might explain their form, distribution and genesis. We also recovered a bottom current meter mooring that had been deployed a few months earlier, by Lamont, about 90 km north of the site chosen for the deep-tow survey.

Eastward Scarp Survey

Deep-tow effort was concentrated in a transponder-navigated survey near the crest of Eastward Scarp, straddling a hyperbolated section of the acoustically laminated sediment that blankets the plateau, the erosionally truncated edge of this section at the plateau rim, and part of the outcrop of the underlying "acoustically transparent" section. The hyperbolae on surface ship records were found to be caused by linear erosional furrows, similar to those discovered by deep-tow on the Blake-Bahama Ridge in 1973 (Hollister et al., 1974). The survey area was at the corner of the plateau rim, in the angle between Eastward Scarp and the side of an orthogonal fracture zone valley, one of several deep reentrants in the scarp. We did make one long deep-tow profile that began on the gently undulating plateau surface 10 km from the survey area, and extended down Eastward Scarp to the Sohm Abyssal Plain (Fig. 6). Except at the steep foot of the scarp from 5100 m to 5500 m, where the seafloor truncates gently dipping "acoustically transparent" strata, this entire slope has furrows of varying size and spacing developed in acoustically laminated sediment. Photographs were taken at frequent intervals down the irregular slope (Fig. 6). At the end of each photo run we made a vertical excursion of 100-200 m to collect CTD profiles: changes in mixed layer thickness can be related to changes in bedform spacing, and the CTD data can complement the results of the Endeavor hydrocast transect. A single photo run was made during our short tow across the edge of the smooth, unfurrowed Sohm Abyssal Plain.

The transponder-navigated survey (Fig. 7) is the most complete mapping of an abyssal furrow field. Overlapping side-scan sonar coverage was obtained for most of the survey area, so that furrow trend, continuity and branching frequency is well determined. The furrows bend smoothly around the corner of the plateau, from a southeasterly orientation (parallel to the fracture valley) in the northern part of the survey to a southwesterly orientation (parallel to Eastward Scarp) in the south. The direction of furrow bifurcation, from which the sense of flow can be inferred, is very consistent (Fig. 8). Three meters (15, 17 and 18CM) 100 m above the furrow field recorded average flows of 7.5 to 10.3 cm/sec, in each case exactly parallel to adjacent furrows; the remarkable feature of the records is the extreme steadiness in direction, though the speed has a tidal fluctuation of about 4 cm/sec. About 700 stereo photos were taken in the furrow field; on those photo runs in the southwestern part of the survey some details of the bed are obscured by murky bottom water, but elsewhere water is clear enough for good photography. Some furrow walls have oblique ripples, similar to those on some Blake Outer Ridge furrows (Hollister et al., 1974).

We expect to learn much about the dynamic geomorphology of erosional furrows by analysis of the deep tow data -- which includes continuous near-bottom CTD measurements -- from this field. An advantage for understanding furrow genesis is that the northern part of the survey includes the beginning of many of the furrows, so that we can see how they start in a spatial sense. In the northeastern part of the survey we also mapped, for the first time, the ends of large furrows, which end abruptly with "birds-foot terminations" (Fig. 9) formed by the splaying of short distributaries. Since the near-bottom currents are parallel to furrow trends, we can use the patterns mapped by side-scan to infer streamlines (Figs. 6, 7); these show, for example, that the water in the branch of thermohaline current that flows southeast along the contours of the fracture valley changes depth by over 150 m as it negotiates the corner of the plateau.

The outcrop of the "acoustically transparent" section in the eastern part of our survey area was found to have a smoothly streamlined surface that lacks furrows but has some small-scale bedforms (showing up in our photographs) that include transverse ripples. The fastest current we measured (average velocity of 13.7 cm/sec at 14CM) was over this eroded outcrop; another meter (16CM) over the "transparent" section (which on our near-bottom 4 kHz profiles shows distinct subbottom reflectors) monitored a steady southeasterly current, but the speed recorder failed to work. A free-vehicle package that has current meters and a time-lapse camera was deployed by M. Wimbush at 32°52'N, 57°29.0'W, near the position of 16CM; it will be recovered in 1979 after several months' operation. The erosionally truncated "transparent layer" outcrop at the foot of our long profile of Eastward Scarp (Fig. 6) had a streamlined surface with crag-and-tail and moated nodules and rock fragments, all indicative of fast currents; current meter 13CM, higher up the lower slope on furrowed terrain, measured an average flow of only 4.0 cm/sec.

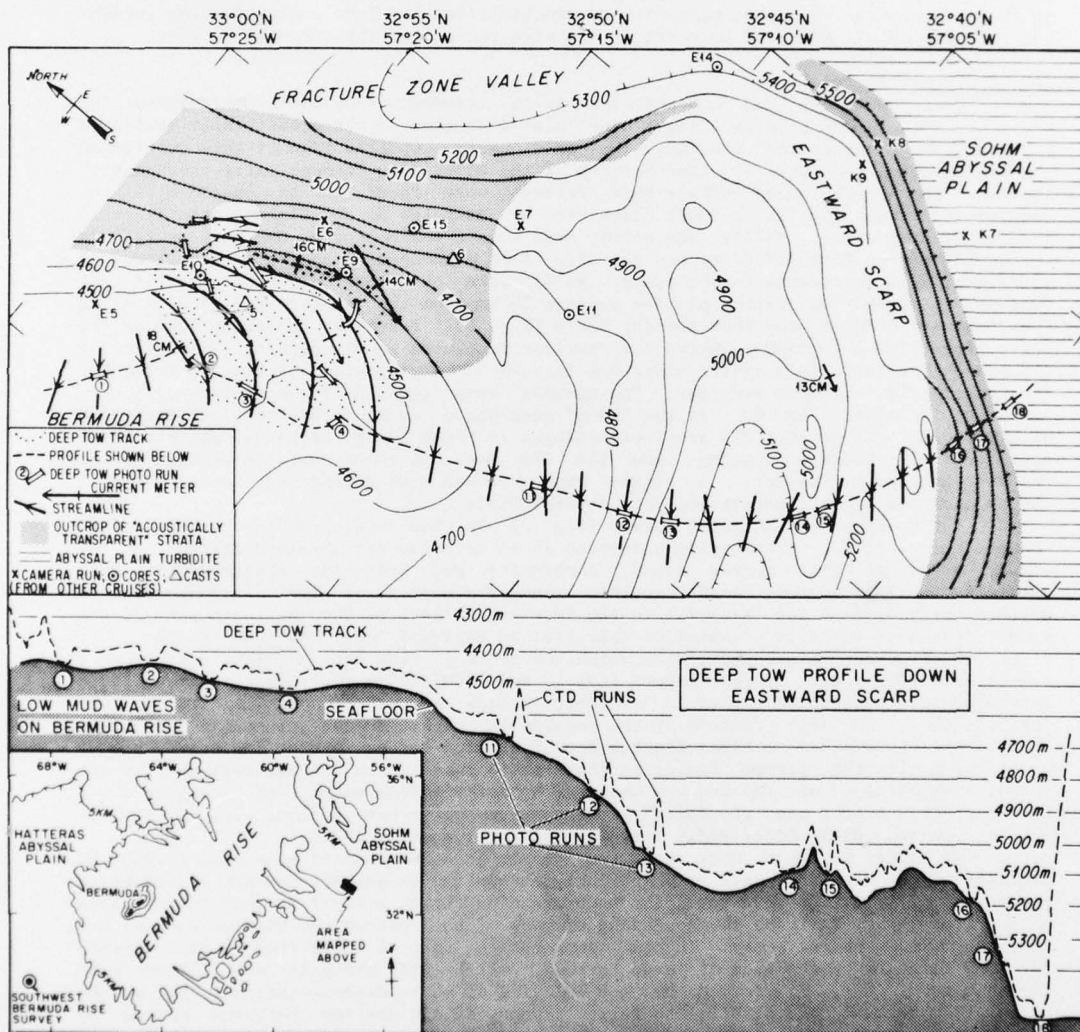


Fig. 7. The deep-tow survey site and long traverse at Eastward Scarp, Bermuda Rise. Inferred streamlines for the bottom current are drawn parallel to mapped furrows in the seafloor. Inset shows location of this site and the one on the southwestern Bermuda Rise.

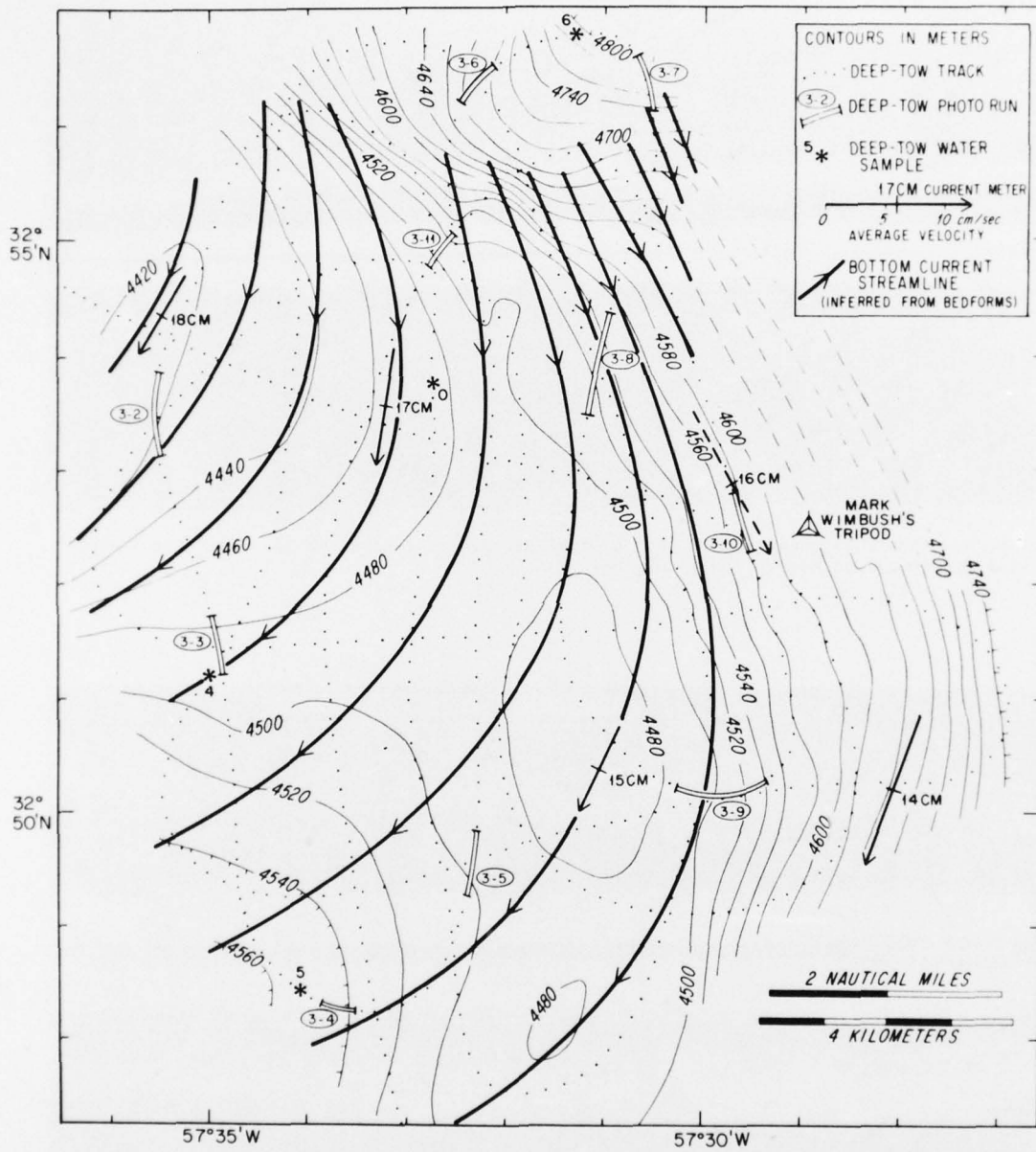


Fig. 8. The detailed survey area near the crest of Eastward Scarp. Depths in corrected meters.

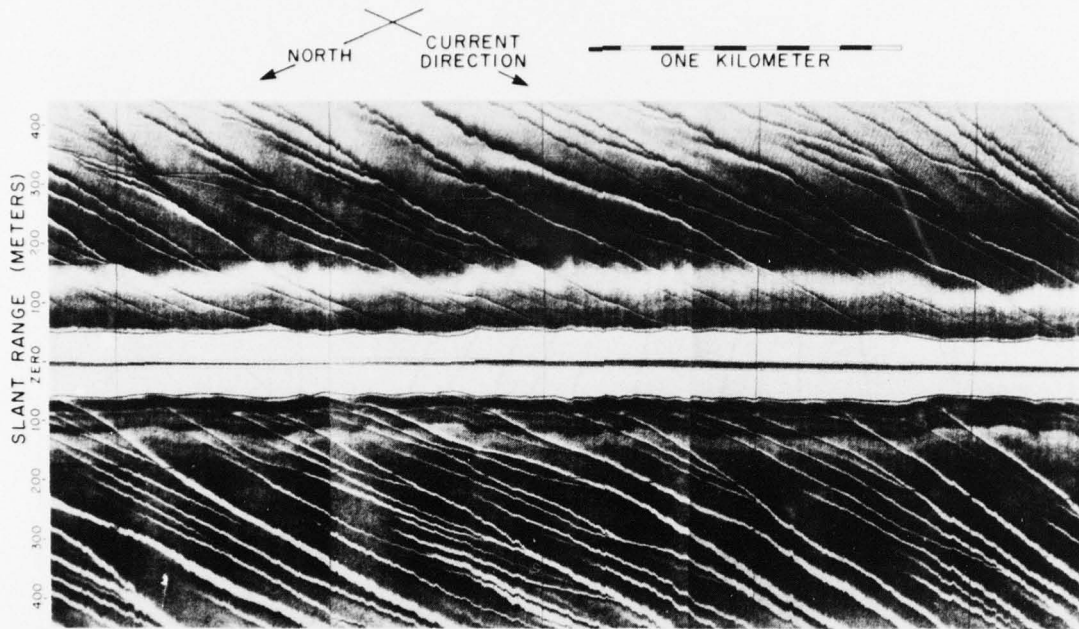


Fig. 9. Side-scan sonar record of a typical pattern of furrows on the northeast Bermuda Rise (southwest of Meter 17CM in Fig. 8).

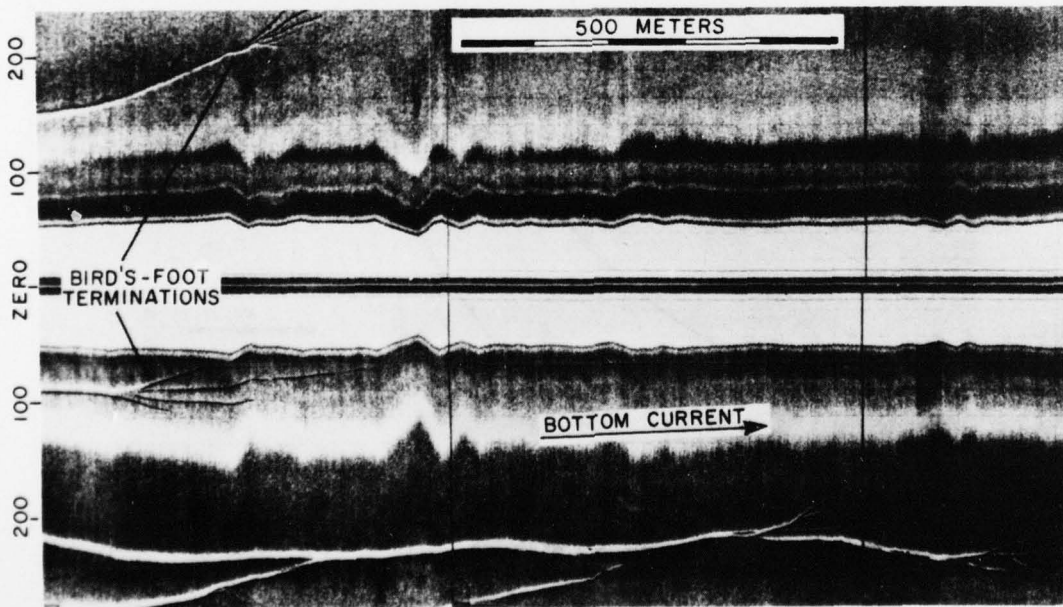


Fig. 10. Side-scan sonar record of bedforms near the western margin of the furrowed region (northeast of Meter 16CM in Fig. 8), showing distinctive shape of their downstream terminations.

Because enough cores had been collected on earlier cruises, we took no bottom samples at this site. The only hydrocasts taken were at the long term moorings we retrieved, about 16 km northwest and 60 km east of the deep-tow survey.

Southwest Bermuda Rise Survey

Profiles across a large area of the rise near its southwestern margin with Hatteras Abyssal Plain show patches of hyperbolated seafloor 1-100 km across. We chose to study a small region where a Lamont profiler survey had established the regional pattern of these patches: around 29°50'N, 68°50'W, roughened seafloor occurs in 1-2 km wide strips that extend south-south-west from a much broader patch of hyperbolae (in which a Lamont long-term current meter was deployed). The profiler records show that the roughened areas, with low sea-bed reflectivity, are on the western faces of 20-30 m high mud waves.

The deep-tow survey (Fig. 10) was centered on the crest of a mud wave that bifurcates in the northern part of the survey area. The roughness elements were found to be large slots or furrows up to 15 m deep and 30 m wide. They are similar in scale and their steep-sided morphology to the large erosional furrows mapped by deep tow near the boundary of the Bahama Outer Ridge and Abyssal Plain (Hollister et al., 1974), but are more closely spaced (Fig. 11). Individual furrows seldom branch, and extend for several kilometers, obliquely across the mud wave's west face. This side of the asymmetric, westward migrating wave has a thickened superficial stratum, evidently caused by more rapid sediment accumulation there (Fig. 12). The deep-tow survey encompasses the next wave to the east, whose western face has a similarly thickened but undissected sediment lens, and the furrowed crest of the next wave to the west. At the end of the survey, the tow was extended east to the furrowed face of another wave (beginning about 2.5 km east of Photo Run 4-10, mapped in Fig. 10).

The entire area of seafloor between the clearly furrowed strips, including mud waves' eastern faces and troughs, seems to be covered with subtle lineations whose amplitudes are so small that they have no obvious effect on surface-ship records. These bedforms were recorded by our near-bottom side-scan sonars only under optimum conditions

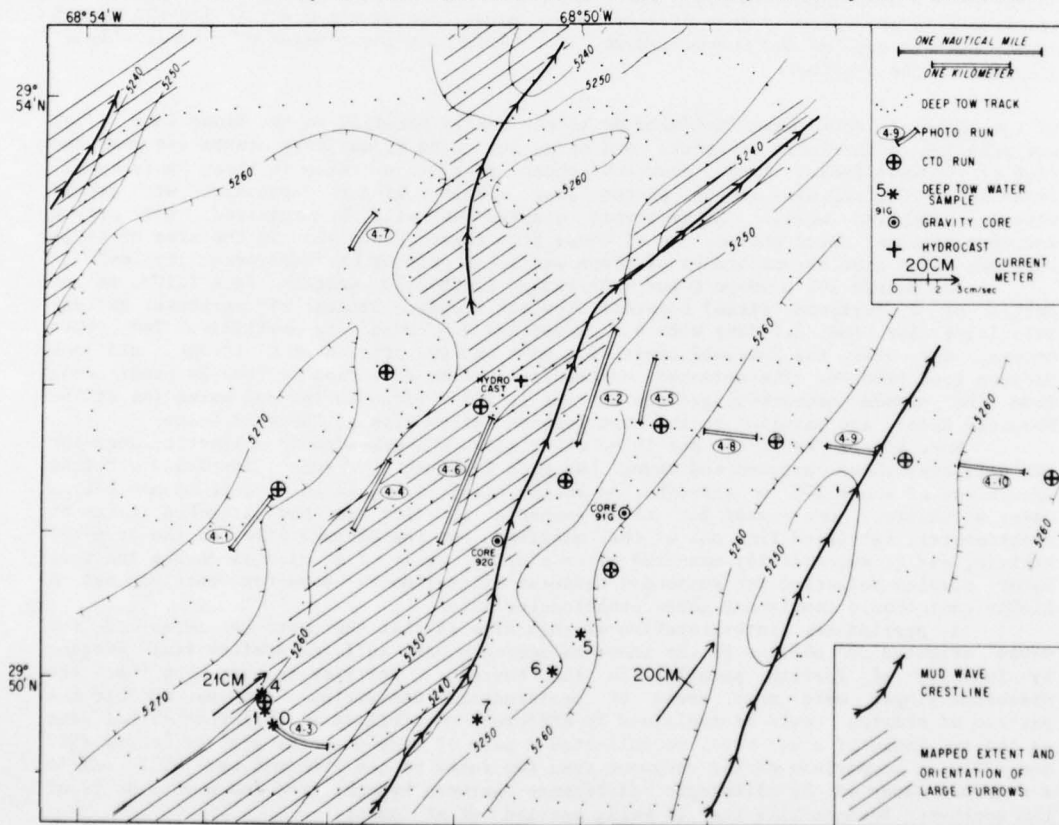


Fig. 11. The Southwest Bermuda Rise deep tow site. Depths in corrected meters.

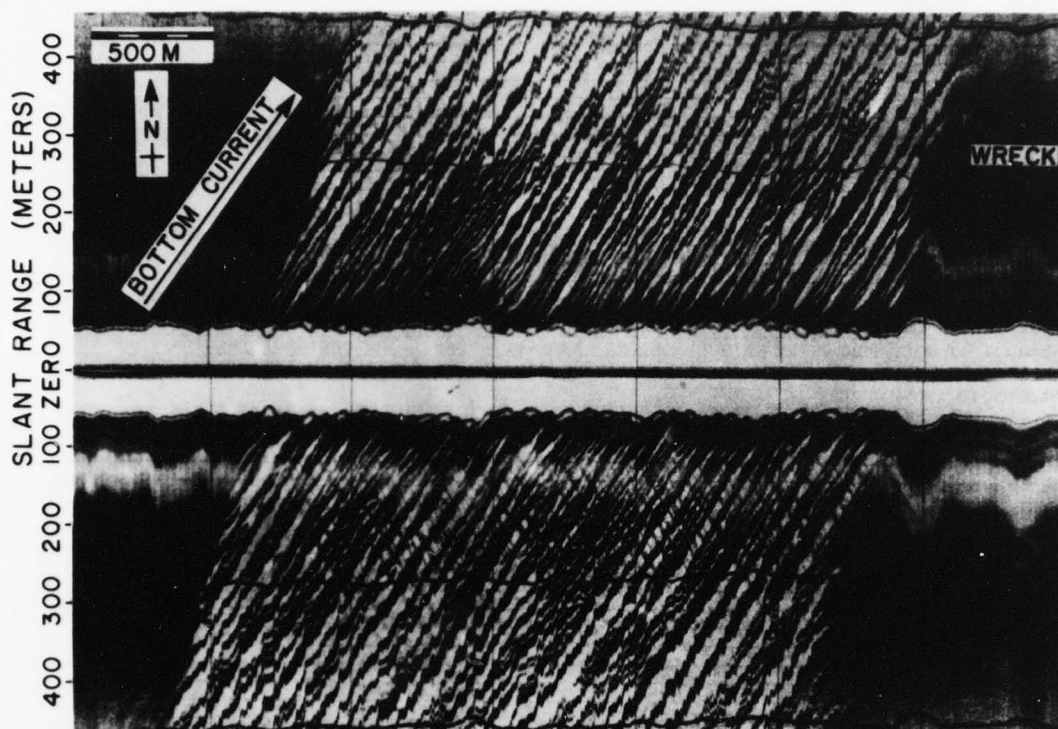


Fig. 12. A pair of side-scan sonar records from the Southwest Bermuda Rise, near the center of the area mapped in Fig. 11. The "striped" region of acoustic shadows and highlights is the furrowed face of a sediment wave; the wave's crest is 100-200 m west of the eastern edge of the furrowed area. The "wreck" is the remains of a small ship or airplane on the seafloor.

of low angle of sound wave incidence on tracks nearly parallel to the lineations. They are parallel to the large furrows, and merge into them at mud wave crests and near the foot of the west faces. Seven deep-tow photo runs were taken in these "unfurrowed" areas (Fig. 10), and many of the photos show shallow linear depressions with gently sloping unrippled walls. Stereoscopic examination will be required for proper interpretation of these photos, and of those from three photo runs in the area of large furrows, which show abrupt breaks of slope and local patches of transverse "ripples".

Two meters 100 m above a mud wave trough (20CM) and western face (21CM, at the margin of a furrowed strip) recorded slow but steady northeasterly currents; average velocities for the 2.7 days were 4.2 cm/sec and 3.0 cm/sec, respectively. Two other meters, one over the furrowed crest of a wave and the other over a trough, did not produce good records. The measured northeasterly flow direction is readily predictable from the mapped geomorphology: the current is 30° oblique to the mud waves (as at the Moroccan Rise), and parallel to the superimposed furrows (as at Eastward Scarp).

More effort than at our three other sites was expended in collecting deep-tow CTD data over these furrowed mud waves. We made frequent "CTD runs", involving vertical excursions of about 200 m through the bottom mixed layer, in an attempt to map bottom water structure. One reason for this emphasis is that we had attached a Lamont nephelometer, retrieved from one of the moorings on the Bermuda Rise, to the deep-tow vehicle, and it successfully measured water clarity every 7.5 minutes during the tow. Water samples collected for suspended sediment filtration by deep-tow bottles and a Niskin cast should complement these nephelometer data.

A preliminary interpretation of this site is that the upstream faces of mud waves oriented 30° oblique to the measured currents have suffered preferential erosion by incision of furrows parallel to the current. Profiler records show that the dissected slopes were once areas of preferential deposition. To test whether the pattern of erosion could be explained by different erodibility of different lithologies on the two faces of a mud wave, we collected a pair of wide-diameter gravity cores (91G and 92G). A comparison of the sediment from two faces of the same mud wave will add to a regional study of the lithologic difference between hyperbolated and smooth parts of the southwest Bermuda Rise that is being carried out at Lamont.

Acknowledgements

The field program of INDOMED Leg 11 was conducted by the scientific party listed in the appendix, with the enthusiastic support of the officers and crew of R/V Melville (A. Phinney, captain). C. Hollister (Woods Hole Oceanographic Institution) and B. Tucholke (Lamont-Doherty Geological Observatory) were instrumental in planning the cruise, though they were unable to participate in the work at sea. L. Mayer, S. Miller and R. Lawhead helped directly in the preparation of this report.

This work was funded by ONR Contract N00014-75-C-0704 with the Marine Physical Laboratory of the Scripps Institution of Oceanography, and by other contracts with Woods Hole Oceanographic Institution, Lamont-Doherty Geological Observatory, and the University of Rhode Island.

REFERENCES

- Embley, R. W., and M. G. Langseth, 1977. Sedimentation processes on the continental rise of northeastern South America, *Mar. Geology*, v. 25, 279-297.
- Embley, R. W., P. D. Rabinowitz, and R. D. Jacobi, 1978. Hyperbolic echo zones in the eastern Atlantic and the structure of the southern Madeira Rise, *Earth Planet. Sci. Letts.*, v. 41, in press.
- Heezen, B. C., E. D. Schneider and O. H. Pilkey, 1966. Sediment transport by the Antarctic Bottom Current on the Bermuda Rise, *Science*, v. 211, 611-612.
- Hollister, C. D., R. D. Flood, D. A. Johnson, P. F. Lonsdale and J. B. Southard, 1974. Abyssal furrows and hyperbolic echo traces on the Bahama Outer Ridge, *Geology*, v. 2, 395-400.
- Jacobi, R. D., P. D. Rabinowitz and R. W. Embley, 1975. Sediment waves on the Moroccan continental rise, *Mar. Geology*, v. 19, M61-67.
- Laine, E. P., 1978. Geological effects of the Gulf Stream system in the North American Basin, Ph.D. Thesis, Woods Hole Ref. WHOI 78-7, 164 pp.
- Lonsdale, P. and F. N. Spiess, 1977. Abyssal bedforms explored with a deeply towed instrument package, *Mar. Geology*, v. 23, 57-75.
- Silva, A. J., C. D. Hollister, E. P. Laine and B. E. Beverly, 1976. Geotechnical properties of deep-sea sediments: Bermuda Rise, *Mar. Geotechnology*, v. 1, 195-232.
- Spiess, F. N., and R. C. Tyce, 1973. Marine Physical Laboratory deep tow instrumentation system, *Scripps Inst. of Oceanog. Ref.* 73-4, 37 pp.
- Tucholke, B. E., W. R. Wright and C. D. Hollister, 1973. Abyssal circulation over the Greater Antilles Outer Ridge, *Deep-Sea Res.*, v. 20, 973-995.

APPENDIX

Scientific party of INDOMED Leg 11.

| | |
|--|--------------------------------|
| M. Benson, MPL, Scripps | E. Laine, U. of Rhode Island |
| D. Boegeman, MPL Scripps | R. Lawhead, MPL Scripps |
| M. Brown, volunteer | P. Lonsdale, MPL Scripps |
| J. Edberg, JPL Caltech | L. Mayer, MPL Scripps* |
| M. Elston, SCG Scripps | N. McCave, Woods Hole |
| R. Embley, Lamont | S. Miller, MPL Scripps |
| R. Flood, Inst. Oceanographic Sciences | L. Nemeth, U. of Rhode Island |
| W. Gardner, Lamont | C. Paola, Woods Hole* |
| P. Hoose, Lamont* | M. Richardson, Woods Hole* |
| D. Johnson, Woods Hole | J. Rogers, MPL Scripps |
| W. Keith, MTG Scripps | J. Schmitt, DCPG Scripps |
| G. Kidder, volunteer | M. Wimbush, U. of Rhode Island |

* = student

DISTRIBUTION LIST

Chief of Naval Research
Department of the Navy
Arlington, Virginia 22217

Code 200 (1)
Code 222 (2)
Code 102 D1 (1)
Code 1020S (1)
Code 460 (1)
Code 480 (1)
Code 481 (1)
Code 482 (1)
Code 483 (1)
Code 484 (1)
Code 485 (1)
Code 486 (1)

Director
Office of Naval Research
Branch Office
1030 East Green Street
Pasadena, California 91101 (1)

Commander
Naval Sea Systems Command
Washington, D. C. 20362

Code 03E (1)
Code 034 (1)
Code 0342 (1)
Code 036 (1)
Code 06H1 (1)
Code 06H1-4 (1)
Code 06H2-5 (1)
Code 09C3 (1)
Code 92 (1)
Code 662C14 (1)
PMS 395 (1)
PMS 395-A4 (1)
PMS 395-A1 (1)
PMS 402-B (1)
Code 03423 (Mr. Francis J. Romano) (1)

Commander
Naval Air Systems Command
Washington, D. C. 20361

Code 370 (1)
Code 264 (1)

Commander
Naval Electronics Systems Command
Washington, D. C. 20360

Code PME-124 (1)
Code PME-124-20 (1)
Code PME-124-30 (1)
Code PME-124-60 (1)
Code 320 (1)
Code 3202 (1)

Chief of Naval Material
Department of the Navy
Washington, D. C. 20360

Code 0345 (1)
Code 03T (1)
Code 031 (1)
Code ASW-00 (1)
Code ASW-11 (1)
Code ASW-13 (1)
Code ASW-14 (1)

Chief of Naval Operations
Department of the Navy
Washington, D. C. 20350

Code Op 03 (1)
Code Op 32 (1)
Code Op 098 (1)
Code Op 981 (1)
Code Op 92 (1)
Code Op 095 (1)
Code Op 955F (1)
Code Op 23 (1)
Code Op 967 (1)

Commanding Officer
Naval Ocean Research Development
Activity (NORDA)

National Space Technology Laboratories
Bay St. Louis, Mississippi 39529

Code 100 (1)
Code 110 (1)
Code 200 (1)
Code 300 (1)
Code 330 (1)
Code 340 (1)
Code 350 (1)
Code 360 (1)
Code 500 (1)
Code 600 (1)

Defense Advanced Research Projects Agency
1400 Wilson Boulevard
Arlington, Virginia 22209
Dr. Phillip Selwyn (1)

Director
U. S. Naval Oceanographic Office
National Space Technology Laboratories
Bay St. Louis, Mississippi 39522

Wilbert H. Geddes (1)
Russ Mooney (1)

Director
Defense Research & Engineering
The Pentagon - 3D1048
Washington, D. C. 20301

Assistant Director (Ocean Control) (1)

| | | | |
|---|------------|--|---|
| Director Strategic Systems Projects Office (PM-1) Department of the Navy Washington, D. C. 20360 Code NSP-20 | (1) | Commander Naval Ship Research & Development Center Bethesda, Maryland 20084 | (1) |
| Commander Operational Test & Evaluation Force U. S. Naval Base Norfolk, Virginia 23511 | (1) | Naval Facilities Engineering Command Washington, D. C. 20390 Code 03 Code 032C | (1) (1) |
| Commander, Submarine Force U. S. Pacific Fleet Fleet Post Office San Francisco, California 96601 | (1) | Commanding Officer U. S. Naval Air Development Center Attention Jim Howard Warminster, Pennsylvania 18974 | (1) |
| Commander Submarine Group FIVE Fleet Station Post Office San Diego, California 92132 | (1) | Commander Naval Ocean Systems Center San Diego, California 92152 Code 00 Code 01 Code 52 Code 531 Code 5301 Code 71 Code 72 Code 614 | (1) (1) (1) (1) (1) (1) (1) (1) (1) |
| Commander Third Fleet U. S. Pacific Fleet, FPO San Francisco, California 96610 | (1) | Officer In Charge Naval Ship Research & Development Center Annapolis, Maryland 21402 | (1) |
| Commander Submarine Development Group ONE Fleet Post Office San Diego, California 92132 | (1) | Commanding Officer Naval Coastal Systems Laboratory Panama City, Florida 32401 | (1) |
| Commander Submarine Development Group TWO Naval Submarine Base - New London Groton, Connecticut 06340 | (1) | Commander Naval Surface Combat Systems Center White Oak Silver Spring, Maryland 20910 | (1) |
| Commander, Surface Force U. S. Atlantic Fleet Norfolk, Virginia 23511 | (1) | Director of Research U. S. Naval Research Laboratory Washington, D. C. 20375 Code 2620 Code 2627 Code 8000 Code 8100 | (1) (1) (1) (1) |
| Commander, Surface Force U. S. Pacific Fleet San Diego, California 92155 | (1) | Commanding Officer Naval Underwater Systems Center Newport, Rhode Island 20844 John D'Albora | (1) (1) |
| Reprint Custodian Department of Nautical Science U. S. Merchant Marine Academy Kings Point, New York 11024 | (1) | Commanding Officer Naval Training Equipment Center Orlando, Florida 32813 Tech Library | (1) |
| Deputy Commander Operational Test & Evaluation Force, Pacific U. S. Naval Air Station San Diego, California 92135 | (1) | Superintendent U. S. Naval Postgraduate School Monterey, California 93940 | (1) |
| Commanding Officer Civil Engineering Laboratory Naval Construction Battalion Center Port Hueneme, California 93043 Code L40 Code L42 | (1) (1) | | |

| | | | |
|--|------|---|-----|
| Officer In Charge Naval Underwater Systems Center New London Laboratory New London, Connecticut 06320 | | Meteorological & Geo- Astrophysical Abstracts 301 E. Capitol Street Washington, D. C. 20003 | (1) |
| Code 900 | (1) | | |
| Code 905 | (1) | Director | |
| Code 910 | (1) | Applied Physics Laboratory | |
| Code 930 | (1) | University of Washington | |
| Code 960 | (1) | 1013 East 40th Street Seattle, Washington 98105 | |
| Chief Scientist Navy Underwater Sound Reference Division U. S. Naval Research Laboratory P.O. Box 8337 Orlando, Florida 32806 | (1) | Director Lamont-Doherty Geological Observatory Torrey Cliff Palisades, New York 10964 | |
| Director Defense Documentation Center (TIMA), Cameron Station 5010 Duke Street Alexandria, Virginia 22314 | (12) | Director College of Engineering Department of Ocean Engineering Florida Atlantic University Boca Raton, Florida 33431 | (1) |
| Executive Secretary, Naval Science Board National Academy of Sciences 2101 Constitution Avenue, N. W. Washington, D. C. 20418 | (1) | Director Attention Dr. J. Robert Moore Institute of Marine Science University of Alaska Fairbanks, Alaska 99701 | (1) |
| Supreme Allied Commander U. S. Atlantic Fleet ASW Research Center APO New York, New York 09019 Via: ONR 210 CNO OP092D1 Secretariat of Military Information Control Committee | (1) | Director Applied Physics Laboratory Johns Hopkins University Johns Hopkins Road Laurel, Md. 20810 Attention J. R. Austin | (1) |
| Assistant Secretary of the Navy (Research Engineering & Systems) Department of the Navy Washington, D. C. 20350 | (1) | Director Applied Research Laboratory Pennsylvania State University P.O. Box 30 State College, Pennsylvania 16802 | (1) |
| National Oceanic & Atmospheric Administration Ocean Engineering Office 6001 Executive Boulevard Rockville, Maryland 20852 | (1) | Director University of Texas Applied Research Laboratory P.O. Box 8029 Austin, Texas 78712 | (1) |
| Director of Naval Warfare Analysis Institute of Naval Studies 1401 Wilson Boulevard Arlington, Virginia 22209 | (1) | STOIA Battelle Columbus Laboratories 505 King Avenue Columbus, Ohio 43201 | (1) |
| Institute for Defense Analyses 400 Army-Navy Drive Arlington, Virginia 22202 | (1) | Director Institute of Ocean Science & Engineering Catholic University of America Washington, D. C. 20017 | (1) |
| Director Woods Hole Oceanographic Institution Woods Hole, Massachusetts 02543 | (1) | Director Marine Research Laboratories c/o Marine Studies Center University of Wisconsin Madison, Wisconsin 53706 | (1) |

Office of Naval Research
Resident Representative
c/o University of California, San Diego
La Jolla, California 92093 (1)

University of California, San Diego
Marine Physical Laboratory Branch Office
La Jolla, California 92093 (5)

Commanding Officer
Office of Naval Research
Branch Office
London, England U. K.
Box 39 FPO New York 09510 (2)

National Science Foundation
Washington, D. C. 20550 (1)

Marine Physical Laboratory
MPL-U-71/78

BEDFORMS AND THE BENTHIC BOUNDARY LAYER IN THE NORTH ATLANTIC: A CRUISE REPORT OF INDOWED LEG II by Peter Lonsdale, University of California, San Diego, Marine Physical Laboratory of the Scripps Institution of Oceanography, San Diego, California 92152.
SIO Reference 78-30, 29 December 1978.

In August and September 1978, deep-tow surveys were conducted with R/V Melville at four sites in the North Atlantic: a field of mud waves on the Moroccan continental rise; a patch of hyperbolae-creating bedforms with interfingering debris flows on the Saharan continental rise; an area of abyssal furrows near the crest of Eastward Scarp on the Bermuda Rise; and a field of furrowed sediment waves on the southwest Bermuda Rise. In addition to near-bottom acoustic records, the deep-tow instrument collected stereo photos, CTD and nephelometer data, and samples of bottom water and suspended sediment. There were also current meter, hydrocast and coring

Vb. Marine Geology

1. Peter Lonsdale

Sponsored by
Office of Naval Research
N00014-75-C-0704

UNCLASSIFIED

Marine Physical Laboratory

MPL-U-71/78

BEDFORMS AND THE BENTHIC BOUNDARY LAYER IN THE NORTH ATLANTIC: A CRUISE REPORT OF INDOWED LEG II by Peter Lonsdale, University of California, San Diego, Marine Physical Laboratory of the Scripps Institution of Oceanography, San Diego, California 92152.
SIO Reference 78-30, 29 December 1978.

In August and September 1978, deep-tow surveys were conducted with R/V Melville at four sites in the North Atlantic: a field of mud waves on the Moroccan continental rise; a patch of hyperbolae-creating bedforms with interfingering debris flows on the Saharan continental rise; an area of abyssal furrows near the crest of Eastward Scarp on the Bermuda Rise; and a field of furrowed sediment waves on the southwest Bermuda Rise. In addition to near-bottom acoustic records, the deep-tow instrument collected stereo photos, CTD and nephelometer data, and samples of bottom water and suspended sediment. There were also current meter, hydrocast and coring

Vb. Marine Geology

1. Peter Lonsdale

Sponsored by
Office of Naval Research
N00014-75-C-0704

UNCLASSIFIED

Marine Physical Laboratory
MPL-U-71/78

BEDFORMS AND THE BENTHIC BOUNDARY LAYER IN THE NORTH ATLANTIC: A CRUISE REPORT OF INDOWED LEG II by Peter Lonsdale, University of California, San Diego, Marine Physical Laboratory of the Scripps Institution of Oceanography, San Diego, California 92152.
SIO Reference 78-30, 29 December 1978.

In August and September 1978, deep-tow surveys were conducted with R/V Melville at four sites in the North Atlantic: a field of mud waves on the Moroccan continental rise; a patch of hyperbolae-creating bedforms with interfingering debris flows on the Saharan continental rise; an area of abyssal furrows near the crest of Eastward Scarp on the Bermuda Rise; and a field of furrowed sediment waves on the southwest Bermuda Rise. In addition to near-bottom acoustic records, the deep-tow instrument collected stereo photos, CTD and nephelometer data, and samples of bottom water and suspended sediment. There were also current meter, hydrocast and coring

Vb. Marine Geology

1. Peter Lonsdale

Sponsored by
Office of Naval Research
N00014-75-C-0704

UNCLASSIFIED

Marine Physical Laboratory

MPL-U-71/78

BEDFORMS AND THE BENTHIC BOUNDARY LAYER IN THE NORTH ATLANTIC: A CRUISE REPORT OF INDOWED LEG II by Peter Lonsdale, University of California, San Diego, Marine Physical Laboratory of the Scripps Institution of Oceanography, San Diego, California 92152.
SIO Reference 78-30, 29 December 1978.

In August and September 1978, deep-tow surveys were conducted with R/V Melville at four sites in the North Atlantic: a field of mud waves on the Moroccan continental rise; a patch of hyperbolae-creating bedforms with interfingering debris flows on the Saharan continental rise; an area of abyssal furrows near the crest of Eastward Scarp on the Bermuda Rise; and a field of furrowed sediment waves on the southwest Bermuda Rise. In addition to near-bottom acoustic records, the deep-tow instrument collected stereo photos, CTD and nephelometer data, and samples of bottom water and suspended sediment. There were also current meter, hydrocast and coring

Vb. Marine Geology

1. Peter Lonsdale

Sponsored by
Office of Naval Research
N00014-75-C-0704

UNCLASSIFIED

MPL-U-71/78

stations. This report includes preliminary deep-tow maps of each site, locating photo runs and samples, and presents a few typical sections of data.

MPL-U-71/78

stations. This report includes preliminary deep-tow maps of each site, locating photo runs and samples, and presents a few typical sections of data.

MPL-U-71/78

stations. This report includes preliminary deep-tow maps of each site, locating photo runs and samples, and presents a few typical sections of data.

MPL-U-71/78

stations. This report includes preliminary deep-tow maps of each site, locating photo runs and samples, and presents a few typical sections of data.