

AD-A065 973

FOREIGN TECHNOLOGY DIV WRIGHT-PATTERSON AFB OHIO
A GEOMETRIC METHOD OF CONSTRUCTING AN IMAGE RECOVERED FROM SURF--ETC(U)
SEP 77 V I MANDROSOV
FTD-ID(RS)T-1591-77

F/G 20/6

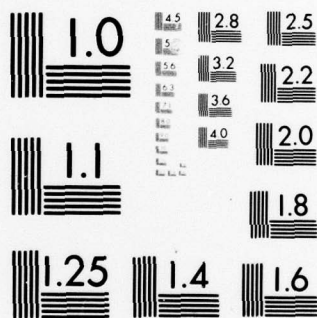
UNCLASSIFIED

NL

| OF |
AD
A065973



END
DATE
FILMED
5-79
DDC



MICROCOPY RESOLUTION TEST CHART
NATIONAL BUREAU OF STANDARDS-1963-A

AD-A065973

FTD-ID(RS)T-1591-77

1

FOREIGN TECHNOLOGY DIVISION



A GEOMETRIC METHOD OF CONSTRUCTING AN IMAGE
RECOVERED FROM SURFACE HOLOGRAMS

by

V. I. Mandrossov



DDC
RECEIVED
19 MAR 1979
E

Approved for public release;
distribution unlimited.

8 11 09 104

EDITED TRANSLATION

FTD-ID(RS)T-1591-77 12 September 1977

MICROFICHE NR: *FTD-77-C-001179*

A GEOMETRIC METHOD OF CONSTRUCTING AN IMAGE
RECOVERED FROM SURFACE HOLOGRAMS

By: V. I. Mandrosov

English pages: 5

Source: Zhurnal Nauchnoy i Prikladnoy Fotografii
i Kinematografii, Izd-vo "Nauka", Vol 17,
Nr. 5, Sept-Oct 1972, PP. 375-376

Country of origin: USSR

Translated by: John A. Miller

Requester: FTD/ETDB

Approved for public; distribution unlimited

ACCESSION for	
NTIS	White Section <input checked="" type="checkbox"/>
DDC	Buff Section <input type="checkbox"/>
UNANNOUNCED	<input type="checkbox"/>
JUSTIFICATION	
BY	
DISTRIBUTION/AVAILABILITY CODES	
Dist.	AVAIL. and/or SPECIAL

A

THIS TRANSLATION IS A RENDITION OF THE ORIGINAL FOREIGN TEXT WITHOUT ANY ANALYTICAL OR EDITORIAL COMMENT. STATEMENTS OR THEORIES ADVOCATED OR IMPLIED ARE THOSE OF THE SOURCE AND DO NOT NECESSARILY REFLECT THE POSITION OR OPINION OF THE FOREIGN TECHNOLOGY DIVISION.

PREPARED BY:

TRANSLATION DIVISION
FOREIGN TECHNOLOGY DIVISION
WP-AFB, OHIO.

FTD ID(RS)T-1591-77

Date 12 Sept 77

8 11 09 104

U. S. BOARD ON GEOGRAPHIC NAMES TRANSLITERATION SYSTEM

Block	Italic	Transliteration	Block	Italic	Transliteration
А а	<i>А а</i>	A, a	Р р	<i>Р р</i>	R, r
Б б	<i>Б б</i>	B, b	С с	<i>С с</i>	S, s
В в	<i>В в</i>	V, v	Т т	<i>Т т</i>	T, t
Г г	<i>Г г</i>	G, g	У у	<i>У у</i>	U, u
Д д	<i>Д д</i>	D, d	Ф ф	<i>Ф ф</i>	F, f
Е е	<i>Е е</i>	Ye, ye; E, e*	Х х	<i>Х х</i>	Kh, kh
Ж ж	<i>Ж ж</i>	Zh, zh	Ц ц	<i>Ц ц</i>	Ts, ts
З з	<i>З з</i>	Z, z	Ч ч	<i>Ч ч</i>	Ch, ch
И и	<i>И и</i>	I, i	Ш ш	<i>Ш ш</i>	Sh, sh
Й й	<i>Й й</i>	Y, y	Щ щ	<i>Щ щ</i>	Shch, shch
К к	<i>К к</i>	K, k	Ъ ъ	<i>Ъ ъ</i>	"
Л л	<i>Л л</i>	L, l	Ы ы	<i>Ы ы</i>	Y, y
М м	<i>М м</i>	M, m	Ь ь	<i>Ь ь</i>	'
Н н	<i>Н н</i>	N, n	Э э	<i>Э э</i>	E, e
О о	<i>О о</i>	O, o	Ю ю	<i>Ю ю</i>	Yu, yu
П п	<i>П п</i>	P, p	Я я	<i>Я я</i>	Ya, ya

*ye initially, after vowels, and after ъ, ь; e elsewhere.
 When written as ё in Russian, transliterate as yě or ě.
 The use of diacritical marks is preferred, but such marks may be omitted when expediency dictates.

GREEK ALPHABET

Alpha	A	α	α	Nu	N	ν
Beta	B	β		Xi	Ξ	ξ
Gamma	Γ	γ		Omicron	Ο	ο
Delta	Δ	δ		Pi	Π	π
Epsilon	E	ε	ε	Rho	Ρ	ρ ϑ
Zeta	Z	ζ		Sigma	Σ	σ ς
Eta	H	η		Tau	Τ	τ
Theta	Θ	θ	θ	Upsilon	Υ	υ
Iota	I	ι		Phi	Φ	φ φ
Kappa	K	κ	κ	Chi	Χ	χ
Lambda	Λ	λ		Psi	Ψ	ψ
Mu	M	μ		Omega	Ω	ω

1591

A GEOMETRIC METHOD OF CONSTRUCTING AN IMAGE RECOVERED FROM SURFACE HOLOGRAMS

V. I. Mandrosov

In [1] we used a wave approach to the theory of holograms located on nonplanar surfaces. On the other hand, the author of [2] examined a geometric method of constructing an image recovered from plane holograms in the paraxial region. The purpose of the present communication is to generalize this method to the case of off-axis nonplanar holograms of arbitrary form.

To analyze the geometric properties of nonplanar surface holograms, let us introduce the coordinate system (x, y, z) with its origin at the apex of a hologram and with axis z directed along the normal to the apex.

Let us also introduce the following designations: $\vec{r}_1(x_1, y_1, z_1)$ - coordinates of a point on the object; $\vec{R}_1(X_1, Y_1, Z_1)$ - coordinates of the source of the reference signal; $\vec{r}_2(x_2, y_2, z)$ - coordinates of the observation point; $\vec{R}_2(X_2, Y_2, Z_2)$ - coordinates of the source of the recording signal; $k_1 = 2\pi/\lambda_1$ - wave number of the reference-signal source; $k_2 = 2\pi/\lambda_2$ - wave number of the recording-signal source; $\vec{r}(x, y, z)$ - coordinates of the point on the hologram, where $z = z(x, y)$ is the equation of the surface on which the hologram is located.

Then, in Fresnel approximation the diffraction zone that forms the imaginary and real image of the point of the object can be represented in the form [1]:

$$E = \frac{i \exp i \psi(0, 0)}{r_2 \lambda_2} \int \exp i \left[\psi_x'(0, 0) x + \psi_y'(0, 0) y + \right. \\ \left. + \frac{1}{2} \psi_{xx}''(0, 0) x^2 + x \psi_{xy}''(0, 0) y + \frac{1}{2} \psi_{yy}''(0, 0) y^2 \right] dx dy, \quad (1)$$

where $\psi(x, y) = k_1 |\vec{r}_1 - \vec{r}| + k_1 |\vec{R}_1 - \vec{r}| + k_2 |\vec{R}_2 - \vec{r}| - k_2 |\vec{r}_2 - \vec{r}|$ is the total phase of the field.

Let us divide the hologram into small segments with origins in coordinates $x_m, y_n, z_{mn} = z(x_m, y_n)$ and make a substitution of variables $x = x_m + s, y = y_n + t$.

Then, in the vicinity of the m -th segment, the field from the point on the object, provided that

$$\frac{1}{2} \psi''_{xx}(0, 0) s^2 + \psi''_{xy}(0, 0) st + \frac{1}{2} \psi''_{yy}(0, 0) t^2 < \frac{\pi}{8} \quad (2)$$

can be represented in the form

$$E = \frac{1}{r_2 \lambda_2} \int \exp i [(\psi'_x(0, 0) + \psi''_{xx}(0, 0) x_m + \psi''_{xy}(0, 0) y_n) s + (\psi'_y(0, 0) + \psi''_{xy}(0, 0) y_n + x_m \psi''_{yy}(0, 0)) t] ds dt$$

(the nonessential phase factors are not considered here).

Thus, with observation of condition (2) the total phase of the field ψ in the vicinity of the m -th segment is a linear function of s and t , i.e., of the coordinates of the point on the hologram.

Starting with this fact, we can show that for a given segment the recording and restoration process occurs just as for a Fraunhofer hologram. Such a hologram is formed with the restoration of two quasi-planar beams located, as easily shown, with respect to beam S_2L passing from the reconstructing source at the same angle as that at which the reference source S_1 and the corresponding point O_1 on the object are seen from the m -th segment [3] (see the figure).

Constructing the restored quasi-planar beams in two such segments and continuing these beams until they intersect, we can construct two images of point O_1 of the object: the imaginary O_2^+ and real O_2^- images. When part of the hologram is located on the path

of, or even near, the line connecting reference source S_1 with the point on the object O_1 , one of the segments is conveniently selected at the intersection P of this line with the hologram (or, mentally, on the intersection with the extension of the hologram), as shown in the figure.

In this case the contribution to the distribution function on this segment from the point on the object will be virtually constant, and the beams that participate in forming the image of the given point will pass in the same direction as the beam from the reconstructing source to the given segment [2] (beam S_2P in the figure).

Thus, knowing the position of the reference and reconstructing sources we can construct an image of the object, restored over the surface of a nonplanar hologram. We can show, in this case, that the position of the restored images coincides in the paraxial region with the position of the image calculated using the Kirchhoff principle. Consequently, the geometric method is applicable primarily in the paraxial region.

Motion Picture Scientific Research Institute (NIKFI)

Received 20 December 1971

REFERENCES

1. Мандросов В. И., Оптика и спектроскопия, 1969, 26, вып. 3, 464.
2. Косоуров Г. И., Тр. 1-й всесоюзной школы по голографии, Москва, 1968.
3. Сороко Л. М., Успехи физ. наук, 1966, 90, № 1, 3.

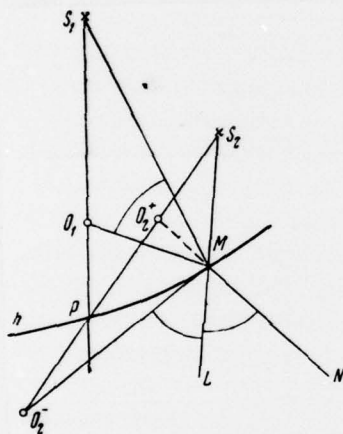


Figure caption

Geometric construction of imaginary and real images, restored over a curvilinear hologram: S_1 - reference source; S_2 - reconstructing source; h - hologram. $\angle S_1MO_1 = \angle O_2^+ML = \angle LMN$.

UNCLASSIFIED

SECURITY CLASSIFICATION OF THIS PAGE (When Data Entered)

REPORT DOCUMENTATION PAGE		READ INSTRUCTIONS BEFORE COMPLETING FORM
1. REPORT NUMBER FTD-ID(RS)T-1591-77	2. GOVT ACCESSION NO.	3. RECIPIENT'S CATALOG NUMBER
4. TITLE (and Subtitle) A GEOMETRIC METHOD OF CONSTRUCTING AN IMAGE RECOVERED FROM SURFACE HOLOGRAMS		5. TYPE OF REPORT & PERIOD COVERED Translation
		6. PERFORMING ORG. REPORT NUMBER
7. AUTHOR(s) V. I. Mandrosov		8. CONTRACT OR GRANT NUMBER(s)
9. PERFORMING ORGANIZATION NAME AND ADDRESS Foreign Technology Division Air Force Systems Command U. S. Air Force		10. PROGRAM ELEMENT, PROJECT, TASK AREA & WORK UNIT NUMBERS
11. CONTROLLING OFFICE NAME AND ADDRESS		12. REPORT DATE Sept-Oct 1972
		13. NUMBER OF PAGES 5
14. MONITORING AGENCY NAME & ADDRESS (if different from Controlling Office)		15. SECURITY CLASS. (of this report) UNCLASSIFIED
		15a. DECLASSIFICATION/DOWNGRADING SCHEDULE
16. DISTRIBUTION STATEMENT (of this Report) Approved for public release; distribution unlimited		
17. DISTRIBUTION STATEMENT (of the abstract entered in Block 20, if different from Report)		
18. SUPPLEMENTARY NOTES		
19. KEY WORDS (Continue on reverse side if necessary and identify by block number)		
20. ABSTRACT (Continue on reverse side if necessary and identify by block number) 20		

DD FORM 1473

1 JAN 73

EDITION OF 1 NOV 65 IS OBSOLETE

UNCLASSIFIED

SECURITY CLASSIFICATION OF THIS PAGE (When Data Entered)

DISTRIBUTION LIST

DISTRIBUTION DIRECT TO RECIPIENT

ORGANIZATION	MICROFICHE	ORGANIZATION	MICROFICHE
A205 DMATC	1	E053 AF/INAKA	1
A210 DMAAC	2	E017 AF/ RDXTR-W	1
B344 DIA/RDS-3C	8	E404 AEDC	1
C043 USAMIIA	1	E408 AFWL	1
C509 BALLISTIC RES LABS	1	E410 ADTC	1
C510 AIR MOBILITY R&D	1	E413 ESD	2
LAB/FIO		FTD	
C513 PICATINNY ARSENAL	1	CCN	1
C535 AVIATION SYS COMD	1	ETID	3
C557 USAIIC	1	NIA/PHS	1
C591 FSTC	5	NICD	5
C619 MIA REDSTONE	1		
D008 NISC	1		
H300 USAICE (USAREUR)	1		
P005 ERDA	1		
P055 CIA/CRS/ADD/SD	1		
NAVORDSTA (50L)	1		
NASA/KSI	1		
AFIT/LD	1		

FTD-ID(RS)T-1591-77