

AD-A064 373

BELL HELICOPTER TEXTRON FORT WORTH TEX  
EVALUATION OF NON-CHROMATED ETCH FOR ALUMINUM ALLOYS (P-ETCH). (U)  
NOV 78

F/G 13/8

DAAK10-78-C-0398

UNCLASSIFIED

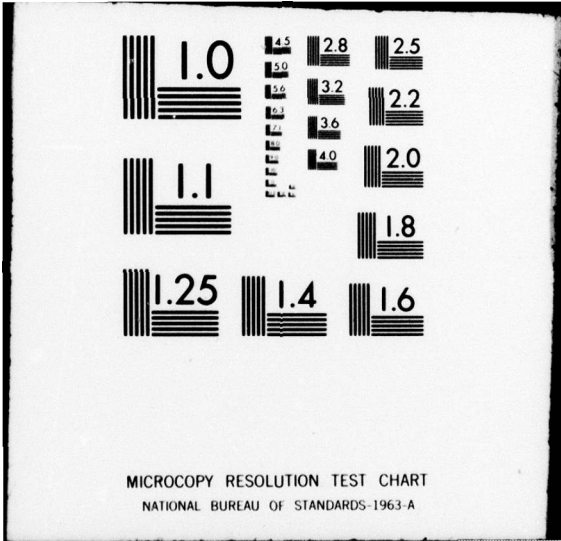
BHT-699-099-104

NL

[OF]  
AD  
A064-373



END  
DATE  
FILMED  
4 -79  
DDC



ADA064373

DDC FILE COPY

① LEVEL II

DISTRIBUTION STATEMENT A

Approved for public release;  
Distribution Unlimited



PROGRESS REPORT

FOR

CONTRACT NO. ⑮ DAAK10-78-C-0398 *New*

TITLE ⑥ EVALUATION OF NON-CHROMATED  
ETCH FOR ALUMINUM ALLOYS (P-ETCH).

⑪ 30 Nov 78

⑭ BHT-699-099-104  
REPORT NO.

CONTRACTING OFFICER:  
VINCENT A. LA TUSO

TECHNICAL MONITOR:  
WILLIAM J. RUSSELL

BELL PROJECT ENGINEER:  
⑨ NARVEL L. ROGERS

DDC

RECEIVED  
FEB 8 1979  
B

Quarterly technical rept. no. 1,  
27 Sep - 30 Dec 78.  
NOVEMBER 30, 1978

Bell Helicopter **TEXTRON**

POST OFFICE BOX 482 • FORT WORTH, TEXAS 76101

79 01 15 046

054 200

*Lm*

PROPRIETARY RIGHTS NOTICE

These data are furnished with unlimited data rights to the  
U.S. Government in accordance with the provisions of  
Contract No. DAAK10-78-C-0398

7851 58739 REV 776

ACCESSION for		
NTIS	White Section	<input checked="" type="checkbox"/>
DOC	Buff Section	<input type="checkbox"/>
UNANNOUNCED		<input type="checkbox"/>
<b>PER LETTER</b>		
BY		
DISTRIBUTION RESPONSIBILITY CODES		
Dist		SPECIAL
<b>A</b>		

## INTRODUCTION

↓  
The purpose of the work performed under this program is to evaluate the new chromate free etchant developed by US Army (ARRADCOM) for use in the preparation of aluminum alloys for adhesive bonding.

The objective of the program is to generate data which will determine the suitability of the etchant for production use.

It will establish the operational control procedures necessary for scale-up to production size and the impact of the solution on existing state-of-the-art waste disposal techniques will be studied. The surfaces produced will be studied to establish their chemical and physical nature.

Selected adhesives will be used to explore the effects of solution concentration limits, solution life and storage time prior to bonding, as well as resistance to water immersion, high humidity, salt spray, heat, and cold, and immersion in fuel, lubricating oil and hydraulic fluid. In each case where applicable, panels prepared by the standard FPL etch treatment will be used as controls.

In addition to the as-etched surfaces, the P-Etch will be used as a pretreatment prior to chromic acid and phosphoric acid anodize, and the resultant anodic treated surfaces will be tested for bondability and durability of the bonded joints.  
↑

CONTRACT NO. DAAK 10-78-C-0398

EVALUATION OF NON-CHROMATE ETCH  
FOR ALUMINUM ALLOYS (P-ETCH)

Interim Technical Report No. 1

This is the first Quarterly Technical Report to be issued concerning the work to be performed under Contract No. DAAK 10-78-C-0398. This report covers the period 27 September 1978 through 30 December 1978.

The following is a brief description of the tasks to be performed during this part of the evaluation of the non-chromated etch process for aluminum.

PHASE I - SOLUTION CONTROL

Solutions will be prepared at selected maximum and minimum concentration limits. Analysis procedures, which may be used to determine the concentration of significant constituents in the solution, will be evaluated. Known amounts of aluminum will be dissolved in the solutions and the significant constituents analyzed to establish the validity of the analysis procedures for use under production conditions and to evaluate the depletion rate of certain constituents.

Suitable test coupons will be prepared and subjected to various tests to determine the effects of the process procedures on the mechanical properties of the metals.

The program has been amended to provide for evaluation of the P<sub>2</sub> etch in lieu of the P etch. The solution control phase of the program is being conducted on schedule.

Progress Accomplished

The P<sub>2</sub> solution has been prepared at concentration levels approximately 10% above and 10% below the concentration shown in Technical Report ARLCD-TR-78001.

Preparation of P<sub>2</sub> Etch

Solution No.	Solution Concentration	H <sub>2</sub> SO <sub>4</sub> wt/g/l	Ferric Sulfate wt/g/l
1.	+10%	407.0	165.0
2.	+ 5%	388.5	157.5
3.	Std	370.0	150.0
4.	- 5%	351.5	142.5
5.	-10%	333.0	135.0

Portions of these solutions have been used to dissolve various amounts of aluminum. These solutions were then used to evaluate analysis techniques.

A procedure for determination of total acid has been selected and it appears to be satisfactory. The procedure is a simple acid-base titration using standard sodium hydroxide. Potassium fluoride is used to complex the iron and tribasic sodium citrate is used to complex the aluminum to prevent their interference.

Analysis Procedure for Sulfuric Acid

1. Pipette 1 ml of sample into a 250 ml Erlenmeyer flask containing 100 ml distilled water.
2. Add 1 gram of tribasic sodium citrate and 1 gram sodium fluoride.
3. Add a few drops of phenolphthalein indicator.
4. Titrate with 0.4 N NaOH (Sodium Hydroxide) to a clear or faint pink.
5. Calculations

A.  $\text{ml } 0.4\text{N NaOH} \times 0.4 = \text{N Sulfuric Acid}$

N Sulfuric Acid to Percent by wt (gm/100 gm)

4.65 N = 20%	6.01 N = 25%	7.46 N = 30%
4.91 N = 21%	6.29 N = 26%	7.76 N = 31%
5.18 N = 22%	6.58 N = 27%	8.06 N = 32%
5.45 N = 23%	6.86 N = 28%	8.37 N = 33%
5.73 N = 24%	7.16 N = 29%	

B.  $\text{ml } 0.4\text{ N NaOH} \times 1.066 = \% \text{ by vol Sulfuric Acid}$

Additional analysis procedures for determination of both ferric and ferrous iron are being studied.

The solutions were also used to etch 2024-T3 (Bare) aluminum panels for various times and the weight loss calculated.

The weight losses in mg/sq ft are as follows:

<u>Immersion Time</u>	<u>High Conc.</u>	<u>Low Conc.</u>
5 minutes	323	289
10 minutes	676	699
15 minutes	980	1229
20 minutes	1328	1840

Fresh solutions were not used for each of the above immersion times. Therefore, the ferric ion concentration was depleted more completely in the low concentration solution and this allowed more aggressive attack. This depletion is evidenced by a change in the solution color from red to green. Also, when the solution is depleted to a certain point, copper is immersion plated onto the aluminum surface.

Work to be Accomplished During the Next Reporting Period

Work will continue on evaluation of analysis procedures and on the effects of the solutions on metal properties.

*N. L. Rogers*

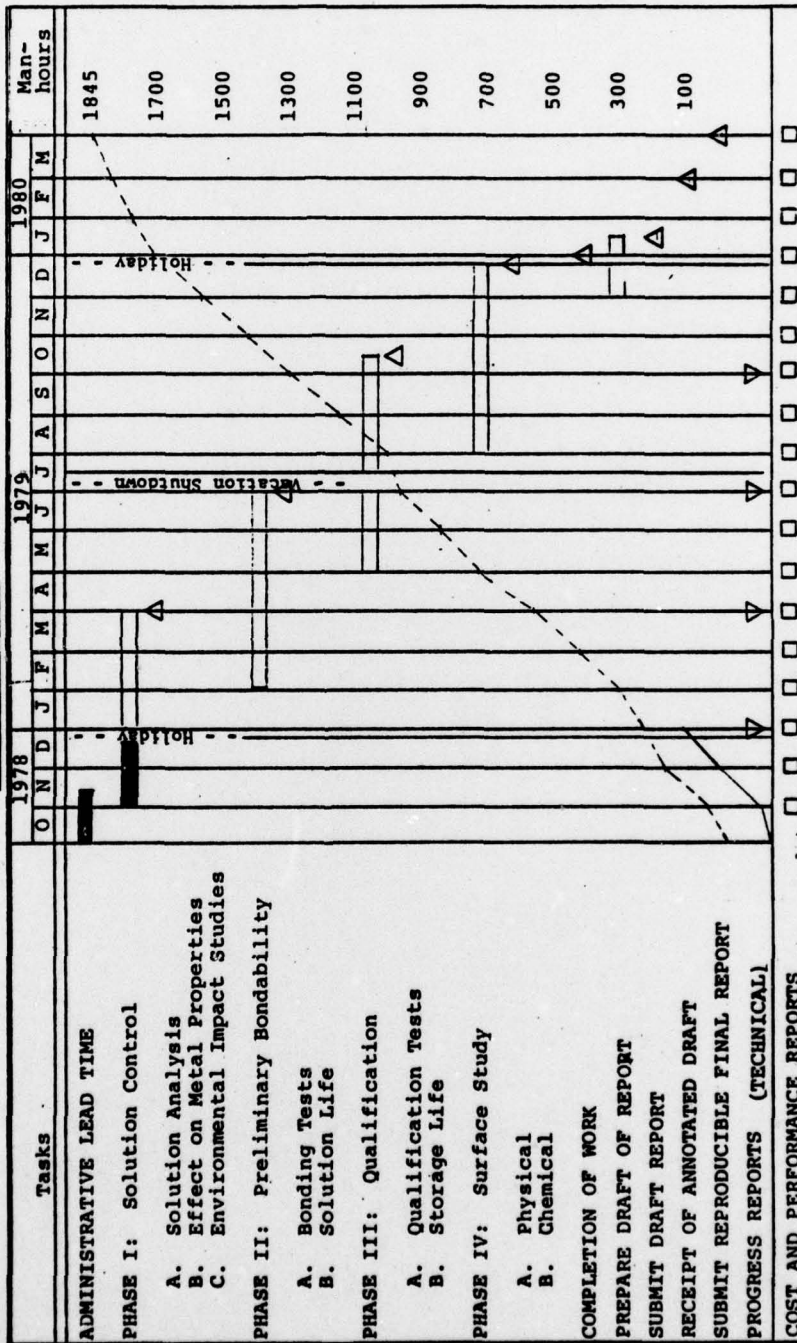
N. L. Rogers  
Project Engineer

1-8-79



PLAN OF PERFORMANCE  
EVALUATION OF NONCHROMATED ETCH

DAAK10-78-C-0398



Manhours: 47 98 70 93 131 133 151 131 113 40 151 143 128 138 142 63 28 45

Event ▽

Major Milestone △