

AD-A055 747

COLD REGIONS RESEARCH AND ENGINEERING LAB HANOVER N H F/G 2/3
USE OF OUTFLOW FOR TREE AND BUSH SPECIES IRRIGATION (ISPOL'ZOVA--ETC(U)
JUN 78 B A ABRAMOV, V I KOROBOV
CRREL-TL-690

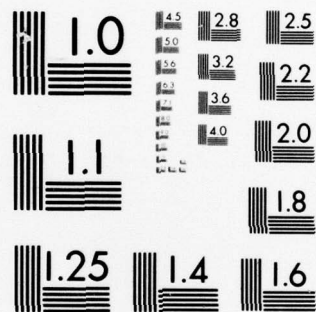
UNCLASSIFIED

NL

| OF |
AD
A055747



END
DATE
FILMED
8 -78
DDC



MICROCOPY RESOLUTION TEST CHART
NATIONAL BUREAU OF STANDARDS-1963-A

Draft Translation 690

...SUMMER TRAN

12



AD No. — AD A055747

DDC FILE COPY

6 USE OF OUTFLOW FOR TREE
AND BUSH SPECIES IRRIGATION
(Ispol'zovaniye Stokov Dlya Poliva
Drevesno-Kustarnikovykh Porod), /

14 CRREL-TL-690

10 B.A./Abramov and V.I./Korobov

11 Jun 1978

12 5p.



CORPS OF ENGINEERS, U.S. ARMY
COLD REGIONS RESEARCH AND ENGINEERING LABORATORY
HANOVER, NEW HAMPSHIRE

Approved for public release; distribution unlimited

78 06 26 030
037 100

Yue

Unclassified

SECURITY CLASSIFICATION OF THIS PAGE (When Data Entered)

REPORT DOCUMENTATION PAGE		READ INSTRUCTIONS BEFORE COMPLETING FORM
1. REPORT NUMBER Draft Translation 690	2. GOVT ACCESSION NO.	3. RECIPIENT'S CATALOG NUMBER
4. TITLE (and Subtitle) USE OF OUTFLOW FOR TREE AND BUSH SPECIES IRRIGATION		5. TYPE OF REPORT & PERIOD COVERED
		6. PERFORMING ORG. REPORT NUMBER
7. AUTHOR(s) B.A. Abramov and V.I. Korobov		8. CONTRACT OR GRANT NUMBER(s)
9. PERFORMING ORGANIZATION NAME AND ADDRESS U.S. Army Cold Regions Research and Engineering Laboratory Hanover, New Hampshire		10. PROGRAM ELEMENT, PROJECT, TASK AREA & WORK UNIT NUMBERS
11. CONTROLLING OFFICE NAME AND ADDRESS		12. REPORT DATE June 1978
		13. NUMBER OF PAGES 2p.
14. MONITORING AGENCY NAME & ADDRESS (if different from Controlling Office)		15. SECURITY CLASS. (of this report)
		15a. DECLASSIFICATION/DOWNGRADING SCHEDULE
16. DISTRIBUTION STATEMENT (of this Report) Approved for public release; distribution unlimited		
17. DISTRIBUTION STATEMENT (of the abstract entered in Block 20, if different from Report)		
18. SUPPLEMENTARY NOTES		
19. KEY WORDS (Continue on reverse side if necessary and identify by block number) IRRIGATION AGRICULTURE WASTEWATER		
20. ABSTRACT (Continue on reverse side if necessary and identify by block number) In 1972 studies were initiated in Volgogradskaya Oblast on the use of industrial wastewater for the irrigation of tree and bush species. This paper discusses the results.		

78 06 26 030

DRAFT TRANSLATION 690

ENGLISH TITLE: USE OF OUTFLOW FOR TREE AND BUSH SPECIES IRRIGATION

FOREIGN TITLE: (ISPOL'ZOVANIYE STOKOV DLYA POLIVA DREVESNO-KUSTARNIKOVYKH
POROD)

AUTHOR: B.A. Abramov and V.I. Korobov

SOURCE: None

Translated by Office of the Assistant Chief of Staff for Intelligence for
the Office of Corps of Engineers, 1978, 2p.

NOTICE

The contents of this publication have been translated as presented in the original text. No attempt has been made to verify the accuracy of any statement contained herein. This translation is published with a minimum of copy editing and graphics preparation in order to expedite the dissemination of information. Requests for additional copies of this document should be addressed to the Defense Documentation Center, Cameron Station, Alexandria, Virginia 22314.

ACCESSION	
NTIS	<input checked="checked" type="checkbox"/>
DDC	<input type="checkbox"/>
UNANNOUNCED	<input type="checkbox"/>
JUSTICE	
DISTRIBUTION/AVAILABILITY CODES	
SPECIAL	
A	

76 690

UDC 674.03:268.37

USE OF OUTFLOW FOR TREE AND BUSH SPECIES IRRIGATION

ISPOL'ZOVANIYE STOKOV DLYA POLIVA DREVESNO-KUSTARNIKOVYKH POROD in Russian
pp 13-14

[Article by Candidate of Agricultural Sciences B. A. Abramov and Engineer
V. I. Korobov (Volga base of the VNIISV)]

In 1972 studies were initiated in Volgogradskaya Oblast on the use of industrial waste water for the irrigation of tree and bush species. Mixed waste water from the production of Dipterex, caustic soda, and industrial-residential effluents was used. Such waste water is cleaned at the purification systems, diluted (1:2) and channeled into a collector pond ("clean card"). The chemical composition of this water (data provided by the Laboratory of the Volga Base of the VNIISV, mg per liter) is the following: hard residue 1544-2190; HCO_3 - 120-210; Cl-700-1470; SO_4 - 336-442; Ca - 152-212; Mg - 9.6-57.6; Na - 340-609; $\text{P}_{\text{general}}$ - 0.2-18; $\text{Fe}_{\text{general}}$ - 0.5; pH - 7.8-8.7.

The water in the collector pond shows an unstable mineralization in the vicinity of the maximum indicators, even occasionally exceeding them. It has a high sodium content which could be lowered through local plant treatment methods and separation of outflow with a high sodium content.

In the spring of 1972 the following were planted over a 1.5 hectare area: black poplar, small-leaved elm, locust, ash, and tamarisk. All trees were 1 year old and were planted with a tree planting machine (cuttings for poplar and tamarisk and seedlings for the balance). The planting took place under very adverse conditions. The first watering was possible only 1 month later and throughout that time drying winds blew. In order to save the plants all seedlings were trimmed on an inverse growth basis. This reduced the evaporation surface of the plants which survived normally. Four seasonal irrigations were applied on 14 May, 7 June, 7 July and 28 August, on the basis of 1100 cubic meters per hectare, and 1 1,600 cubic meters per hectare water supply watering. Flood watering was used to create an even water stratum. The minimum moisture level was kept at 75-80% of maximum moisture capacity. At the end of the vegetation season the condition of the plants irrigated with purified waste water was the following:

Condition of Tree and Bush Species
(October 1972)

Species	Height, cm	Crown width, cm
Black poplar	57	9
Locust	85	22
Small-leaved elm	47	18
Ash	24	-
Tamarisk	77	25

Toward the end of the season some black poplars became top-dry. The root system was dug out to determine whether or not this was related to the influence of the waste water on the roots. Root depth reached 50 cm with an overall length of 334 cm. No dark spots were found on the root surfaces or cuts. Consequently, the dry top condition of the poplars was the result of the disparity between the water reaching the roots and the high transpiration caused by the excessive dryness of the air. No such dry top condition was noted in the remaining species placed under the same conditions, confirming their great drought hardiness compared with the poplar.

Therefore the 1972 experiments indicated the effectiveness of watering tree and shrub species with purified waste water.